



Correction to “Tectonic inheritance and Pliocene-Pleistocene inversion of the Algerian margin around Algiers: Insights from multibeam and seismic reflection data”

Pierre Strzeczynski, Jacques Déverchère, Antonio Cattaneo, Anne Domzig, Karim Yelles, Bernard Mercier de Lépinay, Nathalie Babonneau, and Azzedine Boudiaf

Received 1 April 2010; published 27 May 2010.

Citation: Strzeczynski, P., J. Déverchère, A. Cattaneo, A. Domzig, K. Yelles, B. Mercier de Lépinay, N. Babonneau, and A. Boudiaf (2010), Correction to “Tectonic inheritance and Pliocene-Pleistocene inversion of the Algerian margin around Algiers: Insights from multibeam and seismic reflection data,” *Tectonics*, 29, TC3099, doi:10.1029/2010TC002716.

[1] In the paper “Tectonic inheritance and Pliocene-Pleistocene inversion of the Algerian margin around Algiers: Insights from multibeam and seismic reflection data” by Strzeczynski et al. (*Tectonics*, 29, TC2008, doi:10.1029/2009TC002547, 2010), the geological feature named “Anticline 3” on Figures 6 and 7 and in the caption of Figure 7 should read as “Anticline 2.” The corrected figures and caption are given.

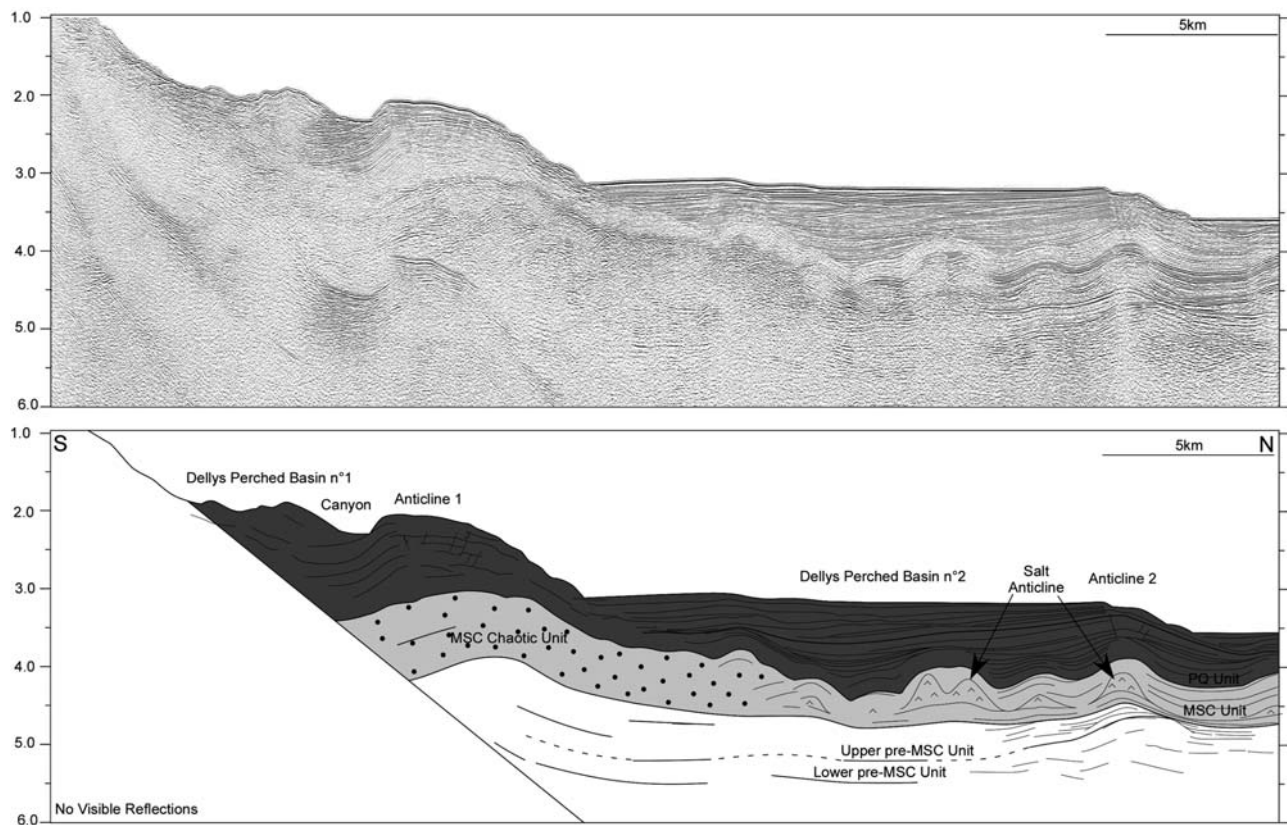


Figure 6. Seismic section and line drawing of a representative six-channel seismic line across the Algerian margin, east of Algiers, off Dellys, crossing the Sebaou canyon on the slope (location in Figure 3). Vertical scale is in two-way travel times (TWTs) in s. Vertical exaggeration is $3\times$ at the seafloor.

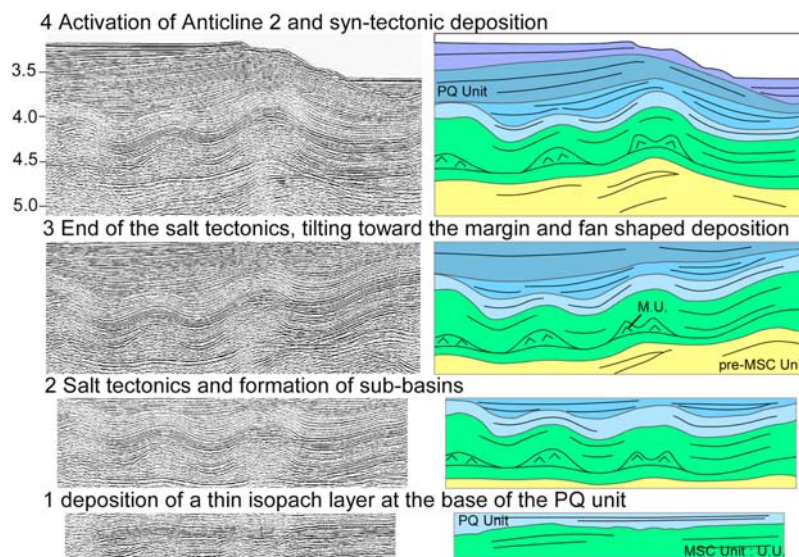


Figure 7. Four steps of Plio-Quaternary evolution of Anticline 2 (see Figures 5 and 3 for location) using “flatten” and “unflatten” functions of Kingdom Suite software. The evolution of the area is characterized by the formation of a salt anticline prior to the onset of tectonics along Anticline 2. Vertical scale is in TWTs in s. Vertical exaggeration is 3× at the seafloor.