

Fifteen years of ocean observations with the global Argo array

Riser Stephen C.¹, Freeland Howard J.^{2,*}, Roemmich Dean³, Wijffels Susan⁴, Troisi Ariel⁵, Belbeoch Mathieu⁶, Gilbert Denis⁷, Xu Jianping⁸, Pouliquen Sylvie⁹, Ann Thresher⁴, Le Traon Pierre-Yves^{10,11}, Maze Guillaume⁹, Klein Birgit¹², Ravichandran M.¹³, Grant Fiona¹⁴, Poulain Pierre-Marie¹⁵, Suga Toshio^{16,17}, Lim Byunghwan¹⁸, Sterl Andreas¹⁹, Sutton Philip²⁰, Mork Kjell-Arne²¹, Joaquin Velez-Belch Pedro²², Ansorge Isabelle²³, King Brian²⁴, Turton Jon²⁵, Baringer Molly²⁶, Jayne Steven R.²⁷

¹ Univ Washington, Dept Oceanog, Seattle, WA 98195 USA.

² Inst Ocean Sci, Fisheries & Oceans Canada, North Saanich, BC V8L 4B2, Canada.

³ Scripps Inst Oceanog, 9500 Gilman Dr, 0230, La Jolla, CA 92093 USA.

⁴ CSIRO, Ctr Australian Weather & Climate Res, Hobart, Tas 7004, Australia.

⁵ Serv Hidrog Naval, A Montes Oca 2124, Buenos Aires C1270 ABV, Buenos Aires, DF, Argentina.

⁶ Joint Commiss Oceanog & Marine Meteorol Operat JC, BP 70, F-29280 Plouzane, France.

⁷ Inst Maurice Lamontagne, Fisheries & Oceans Canada, Mont Joli, PQ G5H 3Z4, Canada.

⁸ SOA, Inst Oceanog 2, 36 Baochubei Rd, Hangzhou 310012, Zhejiang, Peoples R China.

⁹ IFREMER, BP 70, Plouzane, France.

¹⁰ IFREMER, 8-10 Rue Hermes Parc Technol Canal, F-31520 Ramonville St Agne, France.

¹¹ Mercator Ocean, 8-10 Rue Hermes Parc Technol Canal, F-31520 Ramonville St Agne, France.

¹² Bundesamt Seeschiffahrt & Hydrog, Bernhard Nocht Str 78, D-20359 Hamburg, Germany.

¹³ Indian Natl Ctr Ocean Informat Serv, Hyderabad 500090, Andhra Pradesh, India.

¹⁴ Inst Marine, Int Programmes, Wilton Pk House, Wilton Pl, Dublin 2, Ireland.

¹⁵ OGS, 42-C Sgonico, I-20359 Trieste, Italy.

¹⁶ JAMSTEC, Aoba Ku, Aramaki Aza Aoba 6-3, Sendai, Miyagi 9808578, Japan.

¹⁷ Tohoku Univ, Aoba Ku, Aramaki Aza Aoba 6-3, Sendai, Miyagi 9808578, Japan.

¹⁸ Natl Inst Meteorol Sci KMA, 33 Seohobuk Ro, Seogwipo Si 63568, Jeju Do, South Korea.

¹⁹ KNMI, POB 201, NL-3730 AE De Bilt, Netherlands.

²⁰ Natl Inst Water & Atmospher Reseach, 301 Evans Bay Parade, Greta Point, Wellington 6021, New Zealand.

²¹ Marine Res Inst, POB 1870 Nordes, N-5817 Bergen, Norway.

²² Inst Espanol Oceanog, Via Espaldon, Darsena Pesquera, Parcela 8, Santa Cruz de Tenerife 38180, Spain.

²³ Univ Cape Town, Inst Marine Res, Dept Oceanog, ZA-7701 Rondebosch, South Africa.

²⁴ Natl Oceanog Ctr, Southampton S014 3ZH, Hants, England.

²⁵ Met Off, FitzRoy Rd, Exeter EX1 3PB, Devon, England.

²⁶ NOAA, Atlantic Oceanog & Meteorol Lab, 4301 Rickenbacker Causeway, Miami, FL 33149 USA.

²⁷ Woods Hole Oceanog Inst, Woods Hole, MA 02543 USA.

* Corresponding author : Howard Freland, email address : Howard.Freland@dfo-mpo.gc.ca

Abstract :

More than 90% of the heat energy accumulation in the climate system between 1971 and the present has been in the ocean. Thus, the ocean plays a crucial role in determining the climate of the planet. Observing the oceans is problematic even under the most favourable of conditions. Historically, shipboard ocean sampling has left vast expanses, particularly in the Southern Ocean, unobserved for long periods of time. Within the past 15 years, with the advent of the global Argo array of profiling floats, it has become possible to sample the upper 2,000 m of the ocean globally and uniformly in space and time. The primary goal of Argo is to create a systematic global network of profiling floats that can be integrated with other elements of the Global Ocean Observing System. The network provides freely available temperature and salinity data from the upper 2,000 m of the ocean with global coverage. The data are available within 24 hours of collection for use in a broad range of applications that focus on examining climate-relevant variability on seasonal to decadal timescales, multidecadal climate change, improved initialization of coupled ocean–atmosphere climate models and constraining ocean analysis and forecasting systems.

32 **Introduction**

33 In the late 1990s it was recognized that little progress would be made monitoring the changing climate of the
34 Earth without systematic global observations. A small group of oceanographers proposed that some readily-
35 available technology could be adapted and, with sufficient international cooperation, be used to create a global
36 array of floats that could supply real-time global views of the ocean. Thus was born the Argo program. This
37 article reviews the progress made in the first 15 years of Argo and attempts to provide an outline of how the
38 program is likely to change over the next decade.

39

40 **History and present status**

41 The Argo program¹ is a major component of the Global Ocean Observing System² and strives to monitor the
42 evolving temperature and salinity fields of the upper ocean. The profiling floats used in Argo are 2-meter long,
43 freely drifting robotic devices that adjust their depth in the ocean by changing their buoyancy. In the context of
44 Argo, the majority of these instruments are programmed to drift at a nominal depth of 1000 meters (known as
45 the parking depth). A typical duty cycle of an Argo float is shown in Figure 1. Floats are launched at the sea
46 surface and dive to a so-called parking depth of 1000 meters. After a ~9-day interval at the parking depth, the
47 floats descend to 2000 meters, then rise over a period of roughly 6 hours to the sea surface, sampling ocean
48 properties such as temperature and salinity during their ascent. At the surface the data are transmitted to land
49 stations via satellite; the floats then descend back to the parking depth to begin another cycle. A typical float will
50 repeat this 10-day cycle in excess of 200 times over the course of five years or more. Over 10,000 floats have

64 prior to Argo, and the majority of the temperature and salinity observations from the Southern Ocean (defined
65 here as the ocean south of 30°S) in the global database now originate from Argo.

66 In Chapter 3 of its Fifth Assessment Report (hereinafter AR5)⁵, the Intergovernmental Panel on Climate Change
67 (IPCC) Working Group 1 included an Appendix on the *Availability of Observations for Assessment of Change*
68 *in the Oceans* showing the distribution of temperature and salinity profile data from the 1950-1955 to the 2005-
69 2010 pentads; these results indicate the general lack of observations prior to 2000, as well the Northern
70 Hemispheric bias within the pre-Argo observing system. Although not shown in AR5, there is also a known
71 seasonal bias, with the local winter season being generally under-represented in the pre-Argo observing system.
72 It is apparent from this report that the recent expansion of the ocean observing system clearly sets AR5 apart
73 from its predecessor⁶, with most of this change ascribed to the existence of the Argo array. Some issues remain
74 that are being addressed. Since Argo floats must reach the sea surface to transmit their data, Argo could not
75 originally target ice-covered parts of the oceans; now floats are successfully operating in the Antarctic seasonal
76 ice zone^{7,8}. Within the temperate oceans coverage is not homogeneous, but there are efforts to increase coverage
77 in under-sampled regions such as near western boundary currents.

78 While the volume of Argo data easily overwhelms traditional sources, the quantity is of value only if the quality
79 of the data is high. The original Argo target called for temperature and salinity accuracies of 0.005°C and 0.01
80 salinity units, with a pressure accuracy of 2.5 decibars (equivalent to a depth error of about 2.5 meters).
81 Experience has shown that about 80% of the raw profile data transmitted from the floats meet these standards,
82 with little or no correction required. The other 20% of the data are corrected using delayed-mode quality control
83 procedures developed over the past decade^{9,10,11}, with nearly all of these profiles eventually meeting the
84 accuracy goals. Agencies developing operational forecast systems require data in a timely fashion. Currently,
85 about 90% of Argo profiles are distributed electronically within 24 hours of acquisition.

86

87 **Recent Results and Findings**

88 Perhaps the single most powerful metric of the value of Argo is the widespread use of the data produced by the
89 program: since the beginning of Argo in the late 1990s, more than 2100 papers in the refereed science literature
90 have used Argo observations, attesting to the array's value in expanding our understanding of the oceans and
91 climate. The key ocean state variables, temperature and salinity varying with pressure and velocity were
92 measured (or for velocity, mostly inferred) in the world ocean for at least a century prior to the initial
93 deployment of the Argo array. During the 1980s and 1990s the World Ocean Circulation Experiment (WOCE)
94 produced about 8000 high quality ship-based profiles along a number of tracks across the ocean that provide a
95 high quality baseline estimate of the state of the ocean at that time. However, a great deal of the ocean was left

96 unobserved in WOCE due to the limited number of lines that could be occupied, particularly in the Southern
97 Ocean. In this context, the high sampling density and repeat frequency of the Argo observations, in conjunction
98 with their overall quality, have led to important new insights into the nature of the general circulation of the
99 ocean.

100 While compilations of thousands of ship-based observations of ocean temperature and salinity have been
101 averaged and made available as digital atlases since at least the 1980s¹², they suffer from the sampling biases
102 previously noted. With data collected by Argo now becoming the overwhelming majority of observations in the
103 global database, there is an unprecedented opportunity to map the detailed structure of the global ocean
104 temperature and salinity fields, at both surface and subsurface levels, and both globally and locally¹³. These
105 estimates allow the development of climate indicators such as the recent changes in ocean heat content and
106 thermosteric sea level. The global velocity dataset produced by Argo floats¹⁴ is beginning to be used in
107 systematic (and previously impossible) studies^{15,16} to quantify directly the subsurface interior flow fields. The
108 Argo data have also been used to improve our view of the complex structure of oceanic variability at spatial
109 scales smaller than the climate scale. A number of studies have examined properties of mesoscale eddies using
110 Argo profiles^{17,18}, and it has been possible to describe the spatial variability in the internal gravity wave field¹⁹,
111 even though such applications were not envisioned when Argo began.

112 Argo complements the other elements of the global ocean observing system, in particular satellite altimetry.
113 The combination of *in situ* Argo data with sea surface height anomalies derived from satellites allows the
114 construction of time series of the dynamical state of the ocean circulation (such as the North Atlantic meridional
115 overturning circulation²⁰) and high-resolution three-dimensional temperature fields²¹. Techniques have been
116 presented^{22,23} whereby geostrophic computations relative to 1000 decibars can be merged with a combination of
117 satellite altimetry observations and trajectory data to yield estimates of the absolute circulation fields, in well-
118 sampled areas. Argo data are now systematically used together with altimeter data for ocean analysis and
119 forecasting. Most climate models assimilate the subsurface temperature observations from Argo, leading to
120 improved forecasts of intraseasonal waves in the atmosphere, monsoon activity, and ocean-atmosphere
121 interactions such as the El Nino Southern Oscillation (ENSO)²²⁴.

122 Given that they provide a comprehensive baseline of today's ocean state, the Argo observations have been
123 especially useful in examining ocean changes on time scales of decades and longer. A stunning example²⁵ has
124 used contemporary Argo observations in conjunction with data from the HMS *Challenger* expedition, carried
125 out in the second half of the 19th Century. The study reveals a warming of the ocean over the past 135 years of
126 nearly 0.6°C near the sea surface, tapering to near zero at depths near 1000 m (Fig. 3). Over the upper 900 m of
127 much of the ocean there is an average increase in temperature of over 0.3°C over the 135-year study interval.
128 This work, further supported²⁶ by analogous results in climate models²⁶, underscores the changing nature of ocean

129 properties and the need to sustain global observing systems over long periods and, further, that recent changes in
130 ocean temperature likely predate the sparse global-scale ocean datasets of the past half century.

131 A more detailed comparison of Argo profiles available in the time frame 2004-2008 with data in the ship-based
132 data archive (containing data collected through 2001²⁷) shows global-scale changes in both temperature and
133 salinity²⁸ in the upper kilometer of the world ocean in recent decades. The comparison suggests that most
134 regions of the world ocean are warmer in the near surface-layer than in previous decades, by over 1°C in some
135 places. A few areas, such as the eastern Pacific from Chile to Alaska, have cooled by as much as 1°C, yet
136 overall the upper ocean globally has warmed by nearly 0.2°C since the mid-20th century. A recent update of
137 this work²⁹ shows the warming continues to be observed through at least 2013.

138 Prior to the beginning of Argo, ocean salinity was much more poorly sampled than temperature. The highest
139 quality salinity measurements that existed prior to Argo were made during WOCE in the 1980s and 1990s, with
140 periodic reoccupation of some of these sections continuing. With the advent of Argo, it is possible to examine
141 the global variability of salinity above 2000 m with some confidence for the first time. As with temperature, a
142 comparison of Argo results with earlier data³⁰ clearly shows decadal-scale changes in ocean salinity. A related
143 study that compared the Argo results with the data in the older archives³¹ identified a pattern of change in upper
144 ocean salinity in each of the major ocean basins. This change appears consistent with a general warming of the
145 surface layers, causing a poleward migration of wintertime density outcrops. Because there are pole-to-equator
146 temperature and salinity gradients at the sea surface, the surface waters at any latitude are subducted below those
147 at lower latitudes as they circulate towards the equator, with a poleward migration of density yielding a
148 generally lower salinity at higher latitudes. At mid-latitudes, surface warming is accompanied by increased
149 evaporation from the sea surface, thus increasing the salinity of the near-surface waters. When compared,
150 surface and basin-scale contrasts in salinity are found consistently to be strengthening^{29,30,31}. This amplification,
151 with fresh areas getting fresher and salty areas becoming more saline, is consistent with an overall net increase
152 of water vapor transport through the atmosphere, and is also seen to occur in climate models that very closely
153 follow Clausius-Clapeyron thermodynamics³².

154 On more regional scales, Argo data have been used to examine the variable nature of deep ocean ventilation,
155 which is important in sequestering heat and gases into the vast subsurface layers of the ocean. This process
156 occurs at a few high latitude sites in the North Atlantic and the Antarctic, and the resulting circulation induced
157 by this sinking has long been thought to have an important influence on century-scale climate variability³³. The
158 Labrador/Irminger Sea region in the high-latitude N. Atlantic has been extensively examined by Argo in the past
159 decade, with the observations (combined with ship-based datasets and atmospheric heat flux estimates) showing
160 the high sensitivity of the strength of deep convection to year-to-year variations in the wintertime atmospheric
161 conditions³⁴. That work has recently been brought up to date³⁵ and the result is a spectacular demonstration (Fig.

162 4) of the power of Argo to show variability of deep convection in the Labrador Sea and in 2014 the deepest
163 convection observed since 2008.

164 More detailed, regional views of the effects of changing near-surface temperature and salinity, from the central
165 North Pacific, using Argo profiles together with older, ship-based data in the region, have shown a general
166 decrease in upper ocean salinity in the tropics and subtropics, caused by a freshening of the source waters for the
167 upper ocean in the region, essentially water in the surface mixed layer at higher latitudes in winter^{36,37}. This
168 freshening can be attributed to a combination of factors, including increased local precipitation or the poleward
169 migration of the source region due to regional warming. The data availability in this region (including Argo and
170 other datasets) is rich enough to allow an actual heat budget to be constructed, suggesting that precipitation and
171 wintertime entrainment of subsurface water into the mixed layer are the most important factors in determining
172 the surface density over time, and hence also the surface salinity. It appears likely that these factors will change
173 in response to a changing climate state. Elsewhere in the North Pacific, temperature and salinity properties
174 along a track originating off Vancouver Island have been regularly surveyed by research vessels since the 1950s,
175 and in the past decade these surveys have been augmented by Argo observations. The combination of the older
176 data and Argo³⁸ also show that subpolar surface waters are warming and freshening, resulting in a lower surface
177 density (and higher near-surface stratification), thus limiting the direct influence of the atmosphere on the
178 subsurface ocean.

179 As noted, a number of observation-based studies have concluded that the upper layers of the global ocean have
180 warmed in recent decades, or even over a longer term. Yet it is the change in heat storage by the ocean
181 (essentially the vertical integral of temperature change) that is likely to be directly related to the planetary
182 radiation imbalance^{39,40}. It appears that the observed increase in ocean heat content in the upper 700 m over the
183 past 40 years, inferred from Argo and hydrographic observations, is the dominant term in the global inventory of
184 heating changes, with over 90% of the excess heat in the climate system being stored in the oceans⁴¹. Without
185 Argo, it is unlikely that such a conclusion could have been drawn. The data have also allowed temporal spatial
186 variations in ocean heat content to be discerned⁴², suggesting that most of the increase in heat content in the past
187 decade has occurred in the Southern Ocean (which was poorly sampled prior to Argo); it has also been noted⁴³
188 that ENSO variability in the tropical Pacific has for now somewhat obscured the global increase in sea surface
189 temperature. Some of these ideas have been tested using Argo data alone (Fig. 5²⁹), by examining the change in
190 heat content of the upper 2000 m of the ocean in three latitudinal bands from 2006 to the present time; during
191 the Argo era it can be seen that the ocean is warming, mostly south of 20°S. In Figure 5 the Argo-only plots
192 (shown as an inset) are only for the years 2006-2014, inclusive, the period when global coverage from Argo
193 exists. So these short plots are overlaid on a plot of heat content estimates 0-2000 m for the period 1955-2010⁴⁴.
194 The Argo estimates show a very similar trend. This is a crucial result in making an assessment of the ocean's

195 role in climate change, one that would have likely been impossible prior to Argo. Indeed, a recent detailed and
196 systematic analysis of the change in ocean heat content and our ability to observe it⁴⁵ concludes that estimates of
197 the upper ocean heat content based on data collected prior to Argo systematically underestimate the amount of
198 heat content change, mostly due to under-sampling of the Southern Hemisphere ocean; with the advent of a
199 significant amount of Argo data becoming available around 2004, the estimates are greatly improved and show
200 much improved agreement with climate models.

201

202 **Future prospects**

203 When Argo began in the late 1990s, it was by no means clear that the project would be successful in deploying
204 and sustaining an array of 3000 floats over the global ocean, as the required technology was in its infancy and
205 the degree of international cooperation required was unprecedented in the oceanographic community. Now, in
206 the second decade of the 21st century, the float technology is well proven, and over 30 countries are contributing
207 resources to Argo, making it sensible to contemplate expansions of its mission. The Argo Steering Team
208 (hereinafter AST) has provided a roadmap⁴⁶ for how the project might evolve and expand in the next decade,
209 and some of this proposed development is now underway via test deployments or regional pilot arrays. One
210 project is to support an increase in the spatial sampling resolution in special parts of the world ocean where the
211 ocean is especially turbulent (challenging the array's signal resolving power) and the interaction of the ocean
212 and the atmosphere and the resulting climate impacts are especially strong. Improved technology also allows us
213 to expand Argo into previously unsampled regions such as marginal seas and the seasonal ice-zone, implying
214 that the array is more truly global in its coverage than its original design.

215 Intense western boundary currents such as the Gulf Stream and Kuroshio are some of the most striking features
216 of the ocean circulation, serving to transport heat poleward as they carry warm tropical and subtropical waters to
217 higher latitudes. A sizeable portion of this heat is exchanged with the atmosphere along the path of the flow,
218 especially after these currents separate from the boundary and enter the interior of the ocean, altering the tracks
219 of storms and perhaps ameliorating continental climates⁴⁷. When Argo data are used to map monthly and
220 seasonal evolution of the large-scale ocean structures in these regions, the errors are relatively high compared to
221 other regions due to the presence of the vigorous ocean turbulence associated with these boundary current
222 regimes and the lack of spatial resolution of the Argo array. This limits the ability of Argo to achieve one of its
223 main goals, which is to observe the slow evolution of the large-scale ocean structure in these important regions.
224 The AST has suggested that extra float resources should be committed to the study of these regions, and some of
225 the nations that contribute to the array have responded to this call. In the western North Pacific, for example,
226 the boundary domain adjacent to China, South Korea, and Japan is already sampled at a spatial density nearly
227 three times the standard Argo protocol. In the western North Atlantic, between Cape Hatteras and the mid-

228 Atlantic Ridge, the sampling is similarly dense. The ability of the program to enhance sampling in all western
229 boundary current regions is unclear, but these pilot activities will help demonstrate the gains made and thus
230 guide the future sampling recommendations.

231 A similar increase in sampling density is called for in near-Equatorial regions, where strong air-sea coupling can
232 produce global-scale atmospheric anomalies. The tropical Pacific, for example, is the gestation site of the
233 ENSO phenomenon, an irregular seesaw of oceanic warming and cooling that can, via strong coupled
234 amplification, drive global climate variability and cause economic impacts at sites far removed from the low-
235 latitude Pacific. The Indian Ocean Dipole (IOD) is an analogous phenomenon that impacts Indian Ocean rim
236 nations⁴⁶. The surface temperature and salinity associated with these phenomena can be monitored via satellites,
237 but Argo is now the main source of information on their deeper, subsurface expressions. Argo data are used in
238 model forecasts for ENSO and the IOD, and, along with the existing tropical moored arrays, are central to
239 providing and improving predictions of the onset and strength of these scientifically interesting yet socially
240 disruptive events.

241 Additionally, the AST has encouraged the deployment of floats in marginal seas, environments that are
242 regionally important to natural resources and trade. During the early stages of Argo it was decided to avoid
243 deployments in such areas, due to the likely premature loss of floats and troublesome political issues. More than
244 a decade later some of these issues remain, yet the scientific success of Argo has encouraged a number of groups
245 to begin Argo-like programs in several of the marginal seas of the world. Within the Euro-Argo European
246 Research Infrastructure Consortium that is coordinating European contributions to Argo, the MedArgo initiative
247 has maintained an array of more than 50 floats in these regions since 2008 and has plans for expansion. This has
248 helped to clarify the details of water mass formation in the Mediterranean and to improve predictions of the
249 basin-scale circulation by assimilating profile data into numerical models of the circulation. Argo-type efforts in
250 the marginal seas of East Asia have yielded new insights into the interplay of the local ocean and the regional
251 climate in these regions and the nature and causes of long-term changes in their properties, and data resulting
252 from deployments now underway in the Gulf of Mexico will likely eventually be useful in improved hurricane
253 prediction.

254 Argo was originally planned to cover the open ocean equatorward of 60°, thus purposefully avoiding regions
255 seasonally covered in sea ice. A float trapped under sea ice cannot transmit its data, and, for floats that are
256 somehow able to get to the surface in the presence of ice, the danger of being crushed between floes is sizable.
257 In the past decade algorithms have been developed⁴⁸ that greatly increase a float's chances of surviving the
258 winter in the ice zone by inferring the presence of ice from the near-surface temperature structure. Simply
259 stated, if the float determines that ice is present through an on-board analysis of the stratification, then it avoids
260 the surface (thus avoiding the ice), stores its profile and descends for another cycle. In the spring, when the ice

261 retreats and the float can reach the surface, all of its winter data can be transmitted, though without tracking
262 information. This concept has worked well^{7,8} with floats in the seasonal ice zone surviving at about the same
263 rate as floats at lower latitudes. Based on this success, the large fraction of the area of the global ocean that
264 exists at high southern latitudes, and the importance of ice-covered regions around the Antarctic in setting the
265 conditions for meridional overturning, the AST has suggested that deployments in such regions should be
266 systematically increased. Several float deployment groups are now staging pilot deployments in these regions.

267 Beyond deployments in new regions and advances in float software, technological developments have provided
268 new capabilities to profiling floats that allow a larger range of scientific questions to be examined. As
269 originally designed, Argo was intended to be a program to examine the temperature, salinity, and heat content of
270 the world ocean and the climate implications of the variability in these quantities. In the past decade new
271 sensors have come into existence that also allow biogeochemical variables such as dissolved oxygen, nitrate,
272 chlorophyll, and pH to be measured from Argo-type floats. These sensors are small in both physical size and
273 power consumption and barely affect the duration of the basic float mission, and thus floats equipped with such
274 sensors allow the prospect of examining the impact of physical aspects of the ocean circulation on key
275 biogeochemical processes sensitive to the climate state, such as the biogeochemical cycle of carbon, ocean
276 deoxygenation, and ocean acidification⁵⁰. These floats will also contribute to the improvement of the capabilities
277 of biogeochemical models⁵¹ and to the extension of surface biogeochemical properties monitored by ocean color
278 satellites to deeper levels of the water column⁵². The AST has endorsed the general idea of taking advantage of
279 these new developments, while at the same time moving cautiously as the Argo data system gains experience in
280 ingesting and disseminating these new data types. While it is expected that the number of biogeochemical Argo
281 floats deployed will increase dramatically in the coming years, pilot projects in a few key oceanic areas where
282 carbon uptake is crucial will be carried out before envisaging the implementation of a biogeochemical float
283 program at the global scale. Several European efforts in this regard are underway in the North Atlantic.
284 Similarly, the mating of the under-ice capabilities and biogeochemical floats has led to plans by the Southern
285 Ocean Carbon and Climate Observations and Models (SOCCOM) group to examine the carbon cycle around the
286 Southern Ocean, a region responsible for roughly 40% of the global oceanic carbon uptake.^{53,54}

287 In recent years a series of papers^{55,56,57,58} have shown that the deep ocean well below 2000 m contributes a
288 significant fraction of the total water column increases in heat content and thermosteric sea level rise, especially
289 in (but not confined to) the high southern latitudes. This warming, in many cases present at all depths below
290 3000 m, has been deduced from an analysis of sparse but repeated high-quality ship-based observations of
291 temperature and salinity conducted since the 1980s. While the capability of making such measurements from
292 ships has existed for several decades, the cost of the vessels carrying out such work is high, often as much as
293 US\$35K per day. Argo floats, on the other hand, are a seemingly more economical way to observe the ocean,

294 although the present generation of Argo floats generally samples no deeper than 2000 m. The economy may or
295 may not be illusory depending on the strategy used to deploy floats. If floats are deployed on a ship of
296 opportunity there may be no incremental launch costs, but strategic launches do often require a dedicated vessel.
297 In order to begin to explore the abyssal ocean and to refine present estimates of the warming of the deep sea, the
298 AST, has since 2012, supported efforts to develop floats capable of profiling deeper than 2000 m (to as deep as
299 6000 m) and to begin deploying these floats increasingly in 2015 and beyond. This is by far the most ambitious,
300 and technically challenging, development in Argo since the initial float deployments took place in the late
301 1990s. At the present time several prototypes have been tested that use new technologies, such as carbon-epoxy
302 filament wound cylindrical hulls for a 4000 m prototypes being developed in Europe and Japan, or hulls made
303 from glass spheres, for two 6000 m versions being developed in the US. An additional issue is that the
304 temperature, salinity, and pressure sensors on these floats must be more accurate than for standard Argo floats,
305 since the variability in the abyssal ocean is likely to be considerably smaller than in the upper 2000 m of the
306 water column. Prototypes for the 4000 m versions have been successfully deployed in the N. Atlantic and N.
307 Pacific. A dedicated test cruise for deployment of 6000 m prototype floats and for calibration and validation of
308 new ultra-accurate temperature/salinity/pressure sensors took place in the western S. Pacific in mid-2014 and
309 successfully showed the promise of both the new deep floats and sensors. While the deep floats will surely be
310 more costly than present Argo floats, it is hoped that by 2020 systematic sampling of the abyssal ocean will be
311 implemented, with as much as 30% of the Argo array comprised of these deep floats. High-quality sampling of
312 the deep sea from dedicated hydrographic vessels will need to continue far into the future, however, even after
313 the full complement of deep floats is in place; the shipboard surveys together with Argo will provide a more
314 complete global sampling of the abyssal ocean, and the ship-based data will be necessary to monitor the quality
315 of the Argo data in the abyss.

316 It is possible that a decade or two from now the science community will barely recognize the deployment
317 strategies or the instruments being deployed by Argo or its successor programs at that time. For the next few
318 years, the AST has suggested continuing with its long-term plan while also moving in new directions that are
319 part evolution (deploying floats in new and special regions, and the addition of new sensors) and part revolution
320 (designing and testing floats capable of operation in the abyss). The goals of all of this work are to sustain the
321 present systematic observations of the global ocean and to further improve our assessment of the ocean's role in
322 climate.

323 The development of Deep Argo appears to be an especially crucial step in the evolution of the program. The
324 present array has done a credible job of providing estimates of the heat content change in the upper 2000 m of
325 the world ocean over the past few decades, with the measured increases being significant but somewhat smaller
326 than the predictions of model-based global heat budgets. Other studies^{57,58} point to the even deeper waters of

327 the world ocean, beneath the present limits of Argo sampling, as a possible repository of the increased heating
328 necessary to close the global heat budget. Assessing this question, and making progress in other new directions
329 such as observing the oceanic carbon cycle from floats, helping to make improved forecasts of ENSO and IOD,
330 and probing the depths of marginal seas, will likely challenge the abilities of future leaders of Argo to push the
331 limits of evolution and revolution of the program in order to further increase our understanding of the circulation
332 of the ocean and its role in climate.

333 In conclusion, it is important to remember that the prize we are aiming for is an understanding of how the ocean
334 is changing both naturally and as a result of human activities. That said, Argo is indeed a major accomplishment
335 but it does not stand alone. Recently five programs have been brought together in the JCOMMOPS (Joint
336 Commission on Oceanography and Marine Meteorology Operations) office. This includes moored buoy
337 activities such as the equatorial arrays and the individual moorings sponsored by the OceanSites program, also
338 the XBT surveys and the repeat ship-board hydrographic surveys sponsored by the GO-SHIP program. Many of
339 these supply data in real-time in parallel with the Argo program. With all of these programs now operating
340 under a single umbrella the supply of data from the oceans is undergoing a profound transformation.

341

342 **Author Contributions:** The paper was written by SCR (60%) and HJF(40%), with editorial comments and
343 suggestions provided by the remaining co-authors who have all served as members of the Argo Steering Team
344 and so have contributed significantly to the Argo program.

345

346 **Author Affiliations:**

347 Dept. of Oceanography, University of Washington, Seattle, WA 98195, U.S.A.

348 Steve Riser

349

350 Fisheries and Oceans Canada, Institute of Ocean Sciences, North Saanich, BC V8L 4B2 CANADA

351 Howard Freeland

352

353 Scripps Institution of Oceanography, 9500 Gilman Dr.,#0230, La Jolla, CA 92093-0230, USA

354 Dean Roemmich

355

356 Centre for Australian Weather and Climate Research, CSIRO, Hobart, Tasmania, 7004, Australia

357 Susan Wijffels and Ann Thresher

358

359 Servicio de Hidrografia Naval, A. Montes de Oca 2124, Buenos Aires, ARGENTINA

360 Ariel Troisi

361

362 JCOMMOPS, BP70, Plouzane, 29280 FRANCE

363 Mathieu Belbeoch

364

365 Denis Gilbert

366 Fisheries and Oceans Canada, Institut Maurice-Lamontagne, Mont-Joli, Quebec, G5H 3Z4 Canada

367

368 The Second Institute of Oceanography, SOA, No.36 Baochubei Road, Hangzhou, Zhejiang, CHINA 310012
369 Jianping Xu
370
371 IFREMER & MERCATOR OCEAN, 8-10 rue Hermes Parc Technologique du Canal, Ramonville St. Agne,
372 FRANCE 31520
373 Pierre-Yves Le Traon
374
375 IFREMER, BP70, Plouzané, 29280 FRANCE
376 Guillaume Maze and Sylvie Pouliquen
377
378 Bundesamt fuer Seeschiffahrt und Hydrographie, bernhard-Nocht-str., 78, Hamburg, Germany 20359
379 Birgit Klein
380
381 Indian National Centre for Ocean Information Services, Hyderabad, Andhra Pradesh, 500090, India
382 M. Ravichandran
383
384 International Programmes, Marine Institute, Wilton Park House, Wilton Place, Dublin 2, Ireland
385 Fiona Grant
386
387 OGS, Borgo Grotta Gigante, 42/c, Sgonico, Trieste, ITALY 34010
388 Pierre-Marie Poulain
389
390 JAMSTEC and Tohoku University, Aramaki-Aza-Aoba 6-3, Aoba-Ku, Sendai, Miyagi, 980-8578 Japan
391 Toshio Suga
392
393 National Institute of Meteorological Research/KMA, 45 Gisangcheong-gil, Dongjak-gu, Seoul, KOREA, 156-
394 720
395 Byunghwan Lim
396
397 KNMI, P.O. Box 201, 3730 AE de Bilt, Netherlands
398 Andreas Sterl
399
400 National Institute of Water and Atmospheric Reseach, 301 Evans Bay Parade, Greta Point, Wellington, NZ,
401 6021
402 Philip Sutton
403
404 Institute of Marine Research, P.O. Box 1870 Nordnes, 5817 Bergen, Norway
405 Kjell-Arne Mork
406
407 Instituto Español de Oceanografía, Vía Espaldón, Dársena Pesquera, Parcela 8, 38180 Santa Cruz de Tenerife,
408 España
409 Pedro Joaquín Vélez-Belchí
410
411 University of Cape Town, 7701 Rondebosch, South Africa
412 Isabelle Ansorge
413
414 National Oceanography Centre, Southampton, Empress Dock, Southampton, Hampshire, S014 3ZH UK
415 Brian King
416
417 Met Office, FitzRoy Rd, Exeter, Devon EX1 3PB UK
418 Jon Turton

419
420 AOML/NOAA, 4301 Rickenbacker Causeway, Miami, FL 33149 USA
421 Molly Baringer
422
423 Woods Hole Oceanographic Institution, Woods Hole, MA 02543, USA
424 Steve Jayne
425
426

427 **Author Information:** All data used in this paper are freely available from the Argo Global Data Assembly
428 Center at <http://www.coriolis.eu.org/Data-Products>. The authors of this work have no competing financial
429 interests related to the material published here. Correspondence and requests for materials should be addressed
430 to HJF at howard.freeland@dfm-mpo.gc.ca. Reprints and permissions information is available at
431 <http://www.nature.com/reprints>.

432

433 **Acknowledgments:** Argo data were collected and made freely available by the International Argo Program and
434 the national programs that contribute to it. (<http://www.argo.ucsd.edu>, <http://argo.jcommops.org>). The Argo
435 Program is part of the Global Ocean Observing System.

436

437

438

439

440

References

441

- 442 1. Argo Science Team. *On the design and Implementation of Argo – An initial Plan for a global array of*
443 *Profiling Floats*. International CLIVAR project Office ICPO Report No.21. GODAE Report No 5. Published by
444 the GODAE International Project office, c/o Bureau of Meteorology, Melbourne, Australia, 32pp (1998).
- 445 2. Intergovernmental Oceanographic Commission (IOC) *Toward a global ocean observing system: the*
446 *approach to GOOS*. IOC publication IOC-XVII/8, UNESCO, Paris (1993).
- 447 3. Boyer, T. et al. World Ocean Database 2009. S. Levitus, ed. *NOAA Atlas NESDIS 66*, U.S. Gov.
448 Printing Office, Wash., D.C., 216 pp (2009).
- 449 4. <https://doi.org/10.12770/035889-880d-463e-523-100d0>
- 450 5. Intergovernmental Panel on Climate Change (IPCC). *Climate Change 2014: Synthesis Report*. IPCC
451 Geneva, pp 151 (2014).
- 452 6. Intergovernmental Panel on Climate Change (IPCC). *Climate Change 2007: Synthesis Report*. IPCC
453 Geneva, 104 pp (2007).
- 454 7. Wong, A. & Riser, S. Profiling float observations of the upper ocean under sea ice off the Wilkes Land coast
455 of Antarctica. *Journal of Physical Oceanography*, **41**, 1102-1115 (2011).
- 456 8. Wong, A. & Riser, S. Modified shelf water on the continental slope north of Mac Robertson Land, East
457 Antarctica. *Geophysical Research Letters*, **40**, 6186-6190 (2013).
- 458 9. Wong, A., Johnson G., & Owens, W.B. Delayed-mode calibration of autonomous CTD profiling float
459 salinity data by theta-S climatology. *Journal of Atmospheric and Oceanic Technology*, **20**, 308-318 (2003).
- 460 10. Owens, W.B. & Wong, A. An improved calibration method for the drift of the conductivity sensor on
461 autonomous CTD profiling floats by theta-S climatology, *Deep-Sea Research Part I: Oceanographic Research*
462 *Papers*, **56**, 450-457 (2009).
- 463 11. Gaillard, F. et al. Quality Control of Large Argo Datasets. *Journal of Atmospheric and Oceanic Technology*,
464 **26**, 337-351(2009).
- 465 12. Levitus, S. Climatological Atlas of the World Ocean, NOAA Professional Paper 13, U.S. Gov. Printing
466 Office, Rockville, M.D., 190 pp (1982).
- 467 13. von Schuckmann, K., Gaillard, F., & Le Traon, P-Y. Global hydrographic variability patterns during 2003-
468 2008. *Journal of Geophysical Research-Oceans*, **114**, C09007, doi:10.1029/2008JC005237 (2009).

- 469 14. Ollitrault, M. & Rannou, J-P. ANDRO: An Argo-based deep displacement dataset. *Journal of Atmospheric*
470 *and Oceanic Technology*, **30**, 759-788 (2013).
- 471 15. Ollitrault, M. & De Verdiere, C. The ocean general circulation near 1000 m depth. *Journal of Physical*
472 *Oceanography*, **44**, 384-409 (2014).
- 473 16. Gray, A. & Riser, S. A global analysis of Sverdrup balance using absolute geostrophic velocities from
474 Argo. *Journal of Physical Oceanography*, **44**, 1213–1229 (2014).
- 475 17. Castelao, R. Mesoscale eddies in the South Atlantic Bight and the Gulf Stream recirculation region: vertical
476 structure. *Journal of Geophysical Research-Oceans*, doi: 10.1002/2014JC009796 (2014).
- 477 18. Zhang, Z., Wang, W., & Qiu, B. Oceanic mass transport by mesoscale eddies. *Science*, **345**, 322-324
478 (2014).
- 479 19. Hennon, T., Riser, S., & Alford, M. Observations of internal gravity waves from Argo floats. *Journal of*
480 *Physical Oceanography*, **44**, 2370-2386 (2014).
- 481 20. Mercier, H. et al. Variability of the meridional overturning circulation at the Greenland--Portugal OVIDE
482 section from 1993 to 2010. *Progress in Oceanography*, **132**, 250-261 (2015).
- 483 21. Guinehut, S., Dhomps A., Larnicol, G., & Le Traon, P-Y. High resolution 3-D temperature and salinity
484 fields derived from in situ and satellite observations. *Ocean Science*, **68**, 845-857 (2012).
- 485 22. Willis, J. K., and L.-L. Fu (2008), Combining altimeter and subsurface float data to estimate the
486 timeaveraged circulation in the upper ocean, *J. Geophys. Res.*, 113, C12017, doi:10.1029/2007JC004690.
- 487 23. Willis, (2010). *GEOPHYSICAL RESEARCH LETTERS*, VOL. 37, L06602, doi:10.1029/2010GL042372, 2010
- 488 24. Chang, Y., Zhang, S., Rosati, A., Delworth, T., and Stern, W. An assessment of oceanic variability for
489 1960-2010 from the GFDL ensemble coupled data assimilation. *Climate Dynamics*, **40**, 775-803 (2013).
- 490 25. Roemmich, D, Gould, W.J., & Gilson, J. 135 years of global ocean warming between the Challenger
491 expedition and the Argo Programme. *Nature Climate Change*, **2**, 425-428 (2012).
- 492 26. Hobbs, W. & Willis, J. Detection of an observed 135 year ocean temperature change from limited data.
493 *Geophysical Research Letters*, **40**, 2252-2258 (2013).
- 494 27. Levitus, S., et al. Anthropogenic warming of earth's climate system. *Science*, **292**, 267-270 (2001).
- 495 28. Roemmich, D, & Gilson, J. The 2004-2008 mean and annual cycle of temperature, salinity, and steric
496 height in the global ocean from the Argo Program. *Progress in Oceanography*, **82**, 81-100 (2009).

- 497 29. Roemmich, D. et al. Unabated Planetary Warming and its Anatomy since 2006. *Nature Climate Change*, **5**,
498 240-245 (2015).
- 499 30. Durack, P. & Wijffels, S. Fifty-year trends in global ocean salinities and their relationship to broad-scale
500 warming. *Journal of Climate*, **23**, 4342-4362 (2010).
- 501 31. Hosoda, S., Suga, T., Shikama, N., and Mizuno, K. Global surface layer salinity change detected by Argo
502 and its implication for hydrological cycle intensification. *Journal of Oceanography*, **65**, 579-586 (2009).
- 503 32. Durack, P., Wijffels, S. & Matear, R. Ocean salinities reveal strong global water cycle intensification during
504 1950-2000. *Science*, **336**, 455-458 (2012).
- 505 33. Manabe, S. & Stouffer, R. Multiple-century response of a coupled ocean-atmosphere model to an increase
506 of atmospheric carbon dioxide. *Journal of Climate*, **7**, 5-23 (1994).
- 507 34. Yashayaev, I. & Loder, J. Enhanced production of Labrador Sea Water in 2008. *Geophysical Research*
508 *Letters*, **36**, doi:10.1029/2008GL036162 (2009).
- 509 35. Kieke, D., Yashayaev, I. Studies of Labrador Sea Water formation and variability in the subpolar North
510 Atlantic in the light of international partnership and collaboration. *Prog. Oceanogr.* (2015),
511 doi:10.1016/j.pocean.2014.12.010
- 512 36. Ren, L. & Riser, S. Seasonal salt budget in the northeast Pacific Ocean. *Journal of Geophysical*
513 *Research*, **114**, doi:10.1029/2009JC005307 (2009).
- 514 37. Ren, L. & Riser, S. Observations of decadal-scale salinity changes in the thermocline of the North Pacific
515 Ocean. *Deep-Sea Research II*, **57**, 1161-1170 (2010).
- 516 38. Freeland, H. Evidence of change in the winter mixed layer in the Northeast Pacific Ocean: a problem
517 revisited. *Atmosphere-Ocean*, **51**, 126-133 (2013).
- 518 39. Hansen, J., Lacis, A., & Rind, D. Climate trends due to increasing greenhouse gases. In: *Proceedings of the*
519 *Third Symposium on Coastal and Ocean Management*, ASCE/San Diego, California, June 1-4, 1983, 2796-2810
520 (1984).
- 521 40. Palmer, M., McNeall, D., & Dunstone, N. Importance of the deep ocean for estimating decadal changes in
522 Earth's radiation balance. *Geophysical Research Letters*, **38**, doi:10.1029/2011GL047835 (2011).
- 523 41. Rhein, M. et al. Observations: Ocean. In: *Climate Change 2013: The Physical Science Basis. Contribution*
524 *of Working Group I to the Fifth Assessment Report of the Intergovernmental Panel on Climate Change*.
525 Cambridge University Press, Cambridge, United Kingdom and New York, NY, USA (2013).

- 526 42. Sutton, P. & Roemmich, D. Decadal steric and sea surface height changes in the Southern Hemisphere.
527 *Geophysical Research Letters*, **38**, doi: 10.1029/2011GL046802 (2011).
- 528 43. Kosaka, Y. & Xie, S-P. Recent global-warming hiatus tied to equatorial Pacific surface cooling. *Nature*, **501**,
529 403–407 (2013).
- 530 45. Durack, P., Gleckler, P., Landerer, F., & Taylor, K. Quantifying underestimates of long-term upper ocean
531 warming. *Nature Climate Change*, doi:10.1038/NCLIMATE2389 (2014).
- 532 46. Freeland, H. et al. Argo—a decade of progress. In: *Proceedings of OceanObs'09: Sustained Ocean*
533 *Observations and Information for Society (V2)*, Venice, Italy, 21-25 September 2009: ESA Publication WPP-
534 306 10.5270/OceanObs09.cwp.32 (2010).
- 535 47. Kwon, Y-O. et al. Role of Gulf Stream, Kuroshio-Oyashio, and their extensions in large-scale atmosphere-
536 ocean interaction : a review. *Journal of Climate*, **23**, 3249-3281 (2010).
- 537 48. Saji, N., Goswami, B., Vinayachandran, P., & Yamagata, T. A dipole mode in the tropical Indian Ocean.
538 *Nature*, **401**, 360–363 (1999).
- 539 49. Klatt, O., Boebel, O., & Fahrbach, E. A profiling float's sense of ice. *Journal of Atmospheric and Oceanic*
540 *Technology*, **24**, 1301-1308 (2007).
- 541 50. Johnson, K. et al. Observing biogeochemical cycles at global scales with profiling floats and gliders:
542 prospects for a global array. *Oceanography*, **22**, 216-225 (2009).
- 543 51. Brasseur, P. et al. Integrating biogeochemistry and ecology into ocean data assimilation systems.
544 *Oceanography*, **22**, 206-215 (2009).
- 545 52. International Ocean Colour Coordinating Group (IOCCG). Bio-Optical Sensors on Argo Floats. *Reports of*
546 *the International Ocean-Colour Coordinating Group*, **11**, H. Claustre, ed. IOCCG, Dartmouth, Canada (2011).
- 547 53. Frolicher, T. et al. Dominance of the Southern Ocean in anthropogenic carbon and heat uptake in CMIP5
548 models. *Journal of Climate*, **28** 862-886 (2015).
- 549 54. Morrison, A., Frolicher, T. and Sarmiento, J. Upwelling in the Southern Ocean. *Physics Today*, **68**, 27-29
550 (2015).
- 551 55. Fukasawa, M., et al. Bottom water warming in the North Pacific Ocean. *Nature*, **427**, 825-827 (2004).
- 552 56. Johnson, G., Purkey, S., & Bullister, J. Warming and freshening in the abyssal southeastern Indian Ocean.
553 *Journal of Climate*, **21**, 5351-5363 (2008).

554 57. Purkey, S. & Johnson, G. Warming of global abyssal and deep Southern Ocean waters between the 1990s
555 and 2000s: contributions to global heat and sea level rise budgets. *Journal of Climate*, **23**, 6336-6353 (2010).

556 58. Purkey, S., & Johnson, G. Antarctic Bottom Water warming and freshening: contributions to sea level rise,
557 ocean freshwater budgets, and global heat gain. *Journal of Climate*, **26**, 6105-6122 (2013).

558

559

560

561

562

563

564

565

566

567

568

569

570

571

572

573

574

575

576

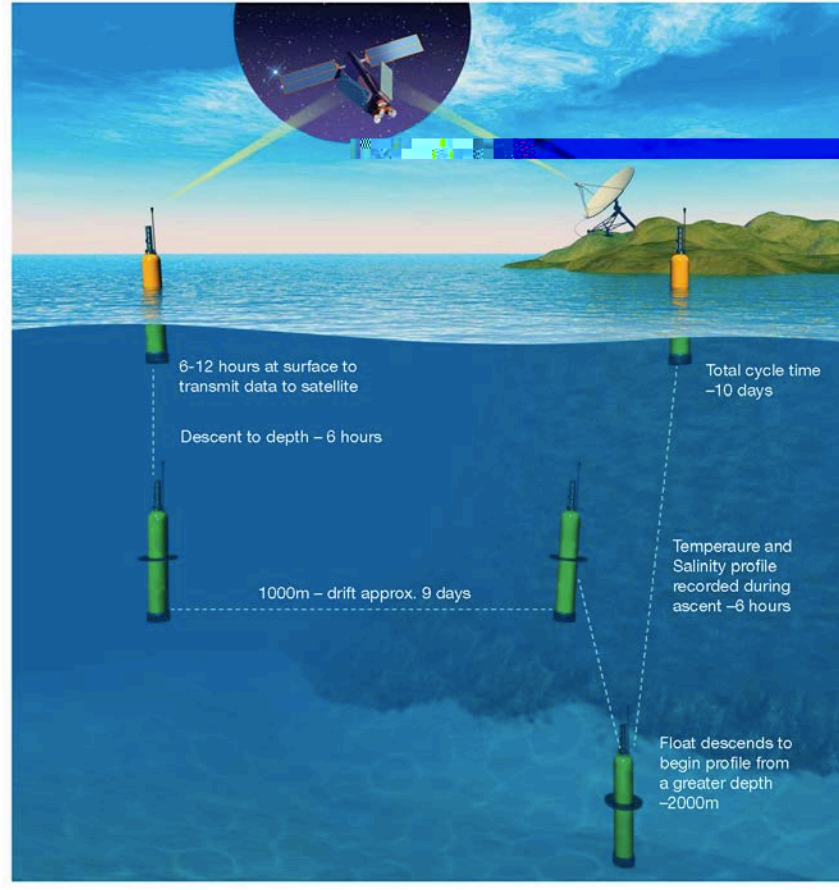
577

578

579

580

List of Figures



581

582 **Figure 1.** In the cycle typical of an Argo float, a float starts at the surface and dives to a depth of 1000 meters
583 (the parking depth) where it rests for 9 to 10 days. After 9 days at rest it dives to a depth of 2000 m, turns on its
584 sampling equipment and measures ocean properties as it rises to the surface where it rests for sufficient time to
585 transmit the data collected to Argos or Iridium satellite systems. It then returns to the parking depth to start
586 another cycle, the typical duration of a complete cycle is 10 days.

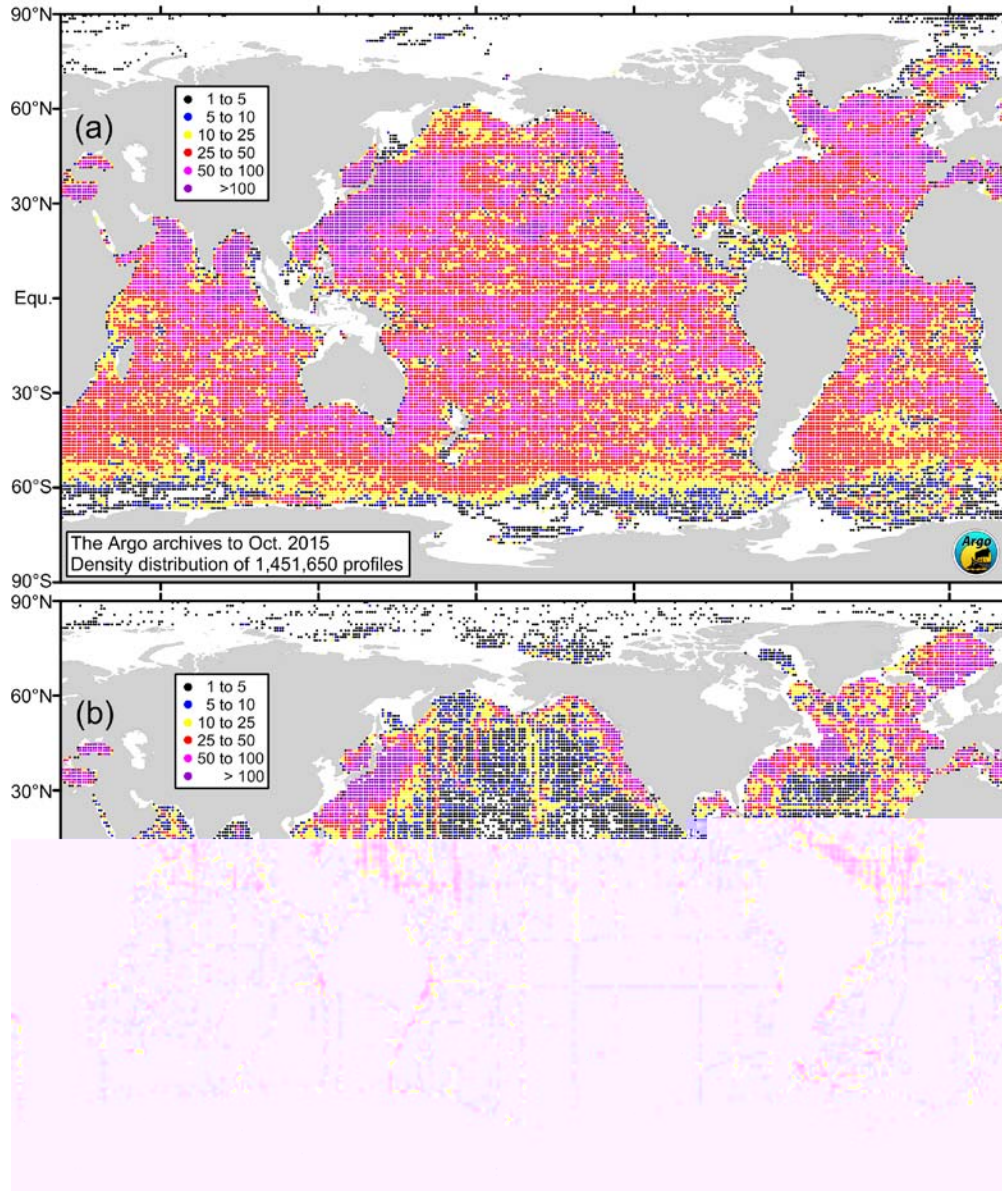
587

588

589

590

591

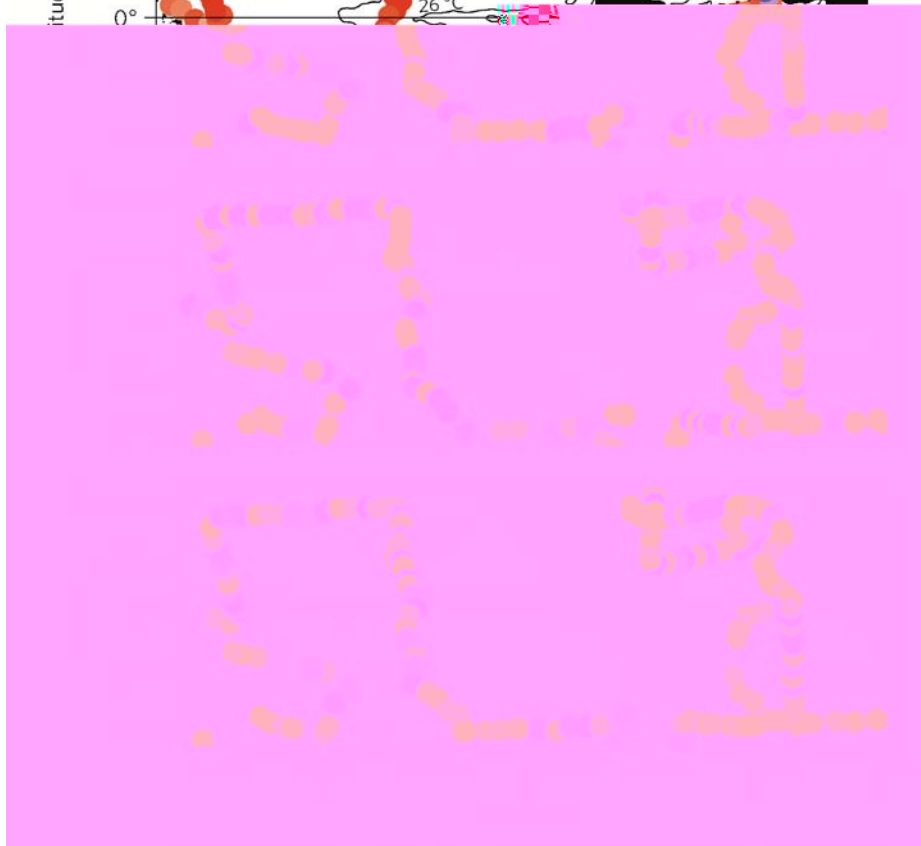


592

593 **Figure 2.** The sampling density of profiles reported by Argo floats⁴ (upper panel; ~1.5 million collected between
 594 1999 to Oct. 2015), and (lower panel) by the most complete assembly of all previous historical efforts (0.5
 595 million largely shipboard observations collected over the past 100 years from the World Ocean Data Base
 596 2009³). This sampling density is computed as the total number of samples in each 1° latitude × 1° longitude
 597 square and is color coded according to the legend on each panel. The analysis only includes profiles that sample
 598 both temperature and salinity to a depth

599

600



601 of 1000 m or deeper.

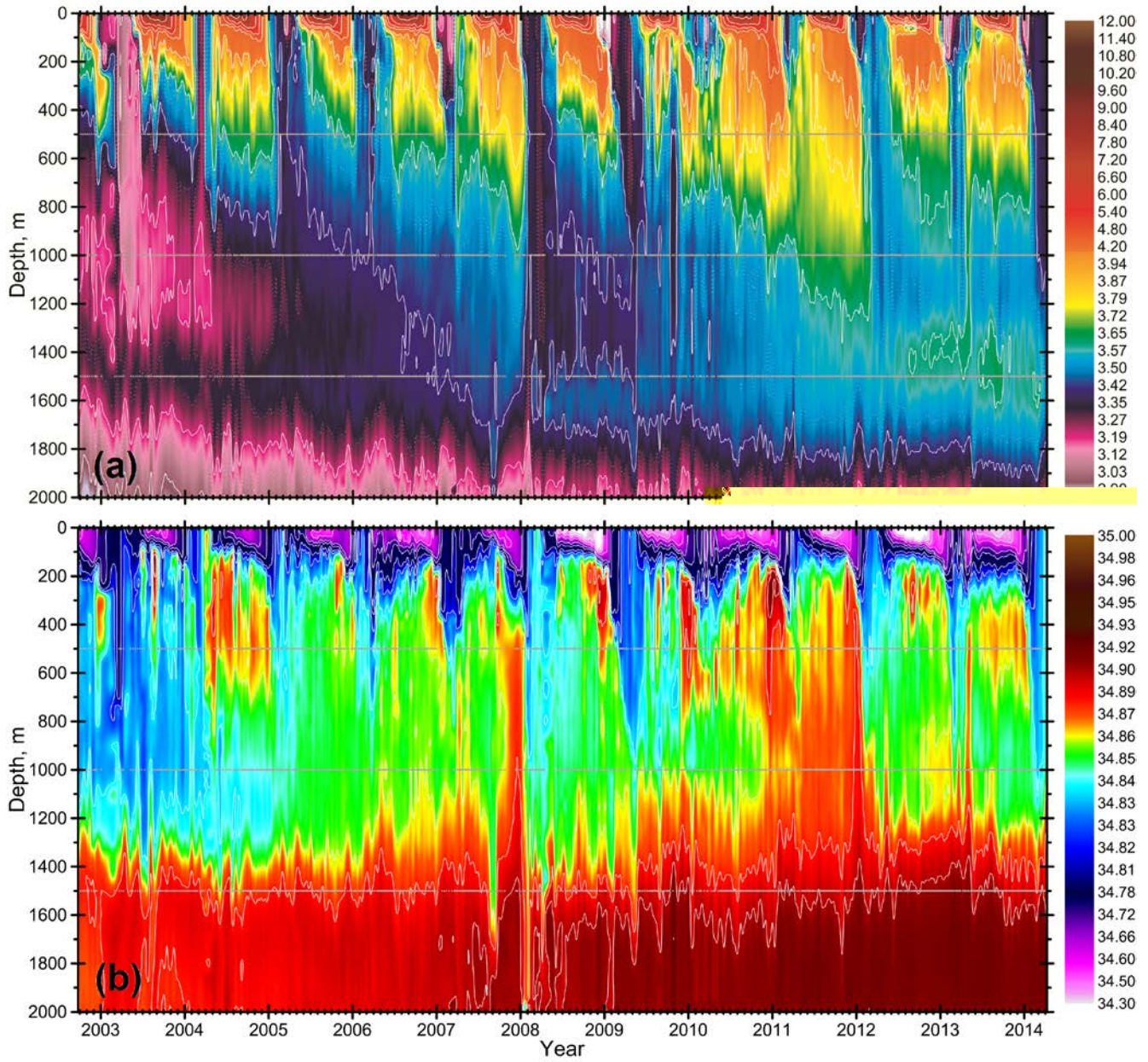
602

603 **Figure 3:** Contours of the mean temperature over the period 2004-2010 in the global ocean²⁶ at (a) the sea
 604 surface, (b) a depth of 366 m, and (c) a depth of 914 m, using Argo data; the dots denote the Argo minus
 605 *Challenger* temperature difference, according to the color scale. Reprinted from (23).

606

607

608



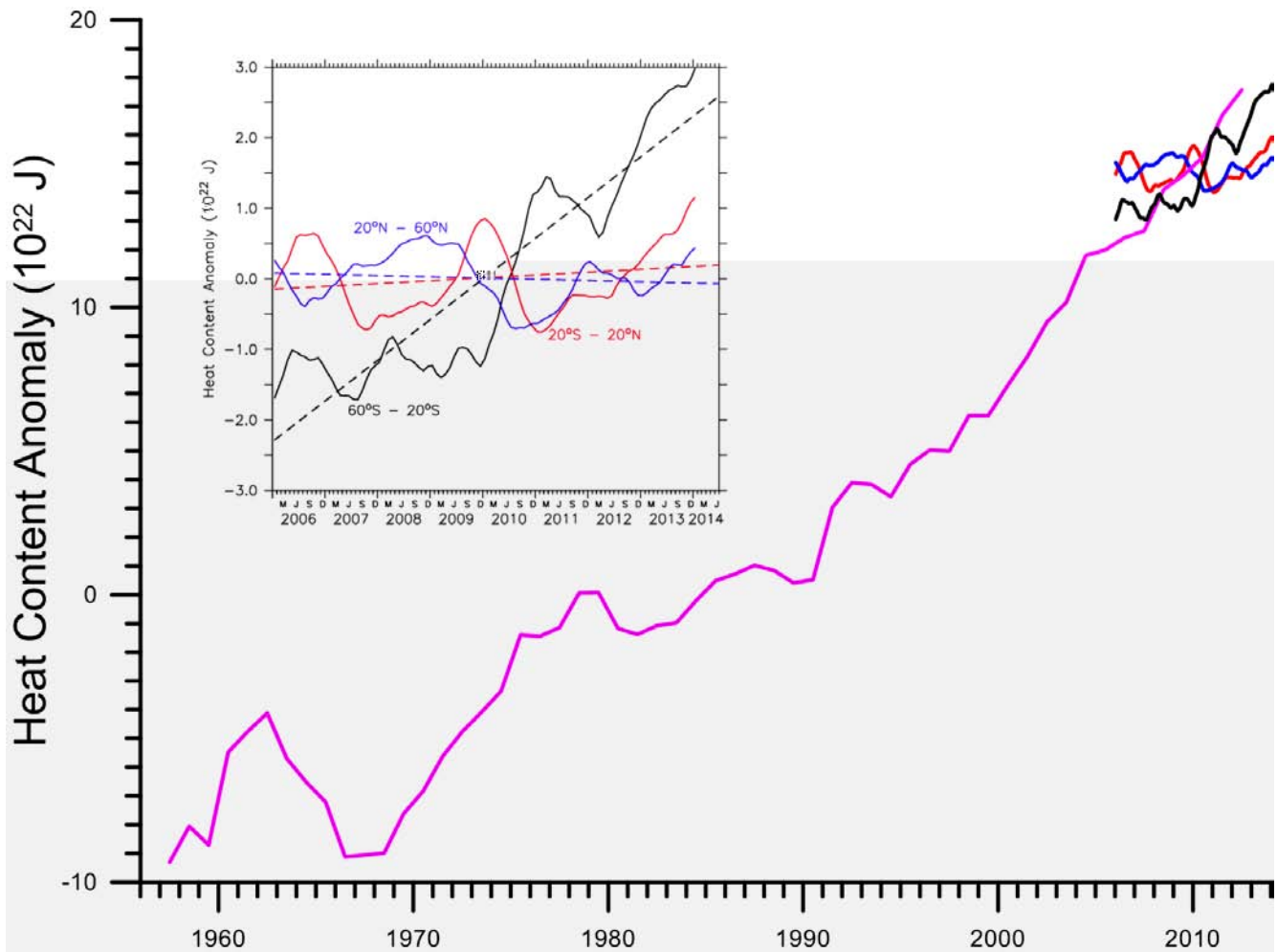
609

610 Figure 4. The seasonal to interannual evolution of potential temperature (a) and salinity (b) in the upper 2000 m
 611 of the Labrador Sea during the period 2002-2014, compiled from Argo observations and recomputed from data
 612 forming the original figure published by Kieke and Yashayev³³.

613

614

615



616

617 **Figure 5:** Estimates of the global heat content anomaly²⁷, for latitude ranges 60°S–20°S (black), 20°S– 20°N
 618 (red), and 20°N–60°N (blue), computed as 12-month running mean values and shown as an inset. Smoothed
 619 trends are shown as the dashed lines on the figure in the same colors; the colored numbers in parentheses refer to
 620 the estimate of the trend of the same color in units of 10^{22} Joules yr^{-1} . In the main diagram the mean values are
 621 changed so that they overlay the 0-2000m heat content computed by Levitus et al.⁴⁴

622