

Environmental drivers explain regional variation of changes in fish and invertebrate functional groups across the Mediterranean Sea from 1994 to 2012

Brind'Amour Anik^{1,*}, Rochet Marie-Joelle¹, Ordines F², Hosack Geoff³, Berthel  Olivier¹, M rigot B⁴, Carbonara P⁵, Follesa Mc⁶, Jadaud Angelique⁷, Lefkaditou E⁸, Maiorano P⁹, Peristeraki P^{8,10}, Mannini A¹¹, Rabiller Manuella¹, Spedicato Mt⁵, Tserpes G⁸, Trenkel Verena¹

¹ IFREMER, Unit  Ecologie et Mod les pour l'Halieutique, rue de l' le d'Yeu, BP 21105, 44311 Nantes cedex 3, France

² Instituto Espa ol de Oceanograf a, Centre Oceanogr fic de Balears, Moll de Ponent s/n, 07015 Palma de Mallorca, Spain

³ CSIRO Marine Laboratories, GPO Box 1538, Hobart, Tasmania 7001, Australia

⁴ Universit  de Montpellier, UMR MARBEC, Station Ifremer, Avenue Jean Monnet, BP 171, 34203 S te, France

⁵ COISPA Tecnologia & Ricerca, Stazione Sperimentale per lo Studio delle Risorse del Mare, Viadei Trulli, 18/20, 70126 Bari - Torre a Mare, Italy

⁶ Department of Life Science and Environment, University de Cagliari, Via T. Fiorelli, 1, 09126 Cagliari, Italy

⁷ IFREMER, Laboratoire Halieutique M diterran e, UMR MARBEC, Avenue Jean Monnet, BP 171, 34203 S te, France

⁸ Hellenic Centre for Marine Research, Institute of Marine Biological Resources and Inland Waters, PO BOX 712, 19013 Anavissos, Greece

⁹ Department of Biology, University of Bari Aldo Moro, Via Orabona, 4 - 70125 Bari, Italy

¹⁰ Biology Department, University of Crete, Heraklion, 71003, Crete, Greece

¹¹ University of Genova, Dip. Te. Ris., Viale Benedetto XV, 3 - 16132 Genoa, Italy

* Corresponding author : Anik Brind'Amour, email address : anik.brindamour@ifremer.fr

Abstract :

Functional groups are sets of species that play a similar role in a food web. We defined functional groups of fish species based on their morphological characteristics, while using expert knowledge for invertebrates. We measured 9 morphological traits of 72 fish species, and carried out multivariate analyses to assign fish species to functional groups. The analysis identified 9 trait-based fish functional groups to which were added 3 expert-based invertebrate functional groups. The habitat (position in the water column) and potential diet of each group were identified from the literature. Using the MEDITS bottom trawl survey data collected at 10 to 800 m depth, we calculated relative change in the 12 fish and invertebrate functional group biomasses for 12 Mediterranean areas over the period 1994 to 2012. Multiple regression trees identified 4 regions with similar changes: (1) the Adriatic and the Ionian Sea; (2) the Tyrrhenian Sea and the Strait of Sicily; (3) the Balearic Islands and other enclosed areas such as the Gulf of Lions and Aegean Sea; and (4) the Ligurian Sea and Sardinia. The biomass of all functional

groups increased or remained stable in the first 2 regions, while around half the functional group biomasses decreased in the other 2 regions. These regional differences in functional group biomass changes were mainly associated with regional variations in the time trends of bottom water temperature (37%), bottom water dissolved oxygen (23%) and mean catch levels (9%). This study contributes to the EU Marine Strategy Framework Directive by proposing food web indicators based on morphologically and habitat defined functional groups.

Keywords : Morphological traits, Community models, Functional network, Functional groups, Mediterranean Sea, Temporal trends, Fish, Shellfish

INTRODUCTION

Evaluating the effects of human activities on the structure and ecological interactions in marine food webs is a major challenge for ecologists (Gårdmark et al. 2015, Möllman et al. 2015). The challenge arises on one hand from the diversity and complexity of food web interactions, and on the other hand from the range of human pressures and their interactions with variations in environmental conditions. One way of handling this complexity is to develop simplified functional networks based on groups of species referred to as functional groups (Petchey & Gaston 2006, Thompson et al. 2012). Functional groups are here defined as sets of species that occupy the same habitat, play a similar role in the food web and whose dynamics can be considered consistent. Functional groups can respond more quickly and clearly than individual populations to anthropogenic and natural pressures (Rochet et al. 2010) and have proven useful for the analysis of community dynamics (McClanahan et al. 2008, Rochet et al. 2013).

Functional groups are the basic components of mass-balanced food web models, such as Ecosim with Ecopath (EwE; Christensen & Pauly 1992) or linear inverse models (Vezina & Platt 1988). Nevertheless, there seems to be no agreed rules about how to select the number of functional groups to be included in a food web model, and few studies have looked at the sensitivity of model results to this decision (Abarca-Arenas & Ulanowicz 2002, but see Fulton et al. 2003). Interestingly, almost all modellers acknowledge the critical role of the number of groups for model results, particularly when foodweb indices are to be computed (Fulton et al. 2003).

For most ecosystem models, functional groups are defined in an *ad hoc* manner based on expert knowledge, literature reviews, and/or statistical analyses of diet data (e.g. Cartes et al. 2002, Stergiou & Karpouzi 2002, Banaru et al. 2013), where the diet data may come from

other regions. However, such approaches often assume low temporal and spatial variability in species feeding preferences. These assumptions have been largely contradicted notably by isotopic (Jennings et al. 1997) and stomach content studies (Pinnegar et al. 2003).

In contrast, significant relationships have been found between species ecomorphological traits and species spatial distributions, which can be explained by environmental conditions (Lamouroux et al. 2002, Brind'Amour et al. 2011), thereby relaxing the need for assuming spatially and temporally stable diets. Ecomorphological approaches have proved useful for investigating the relationship between morphology and certain ecological functions such as trophic function (Piet 1998, Sibbing & Nagelkerke 2001, Albouy et al. 2011). Furthermore, recent functional group definitions have used ecomorphological approaches based on trophic-related traits such as size (Layman et al. 2005, Colloca et al. 2010, Gravel et al. 2013, Reece et al. 2013), oral gap (Dumay et al. 2004, Albouy et al. 2011, Reece et al. 2013) and gut length (Karachle & Stergiou 2010a, b, Reece et al. 2013). The theoretical basis for the use of morphological traits to assess functional groups is rooted in the habitat template theory (Southwood 1977). According to this theory, habitat characteristics act as filters for the selection of (morphological) traits suited to particular environmental conditions, including feeding. For a selection of relevant sets of morphological traits associated with the function of interest, the traits-based approach is an empirical and objective method of assembling species. Grouping species according to traits is also a way to increase the transferability of community models and/or allow the comparison of such models among ecosystems (Brind'Amour et al. 2011). Thus ecosystems may differ in their species composition, but species are likely to form similar functional groups in different ecosystems (Guidetti et al. 2014).

The Mediterranean Sea is an intercontinental sea extending west-east from the Strait of Gibraltar between Spain and Morocco to the shores of the Gulf of Iskenderun on the

southwestern coast of Turkey. It is characterized by several enclosed coastal areas (e.g. Gulf of Lion, Adriatic Sea) and narrow continental shelves (around 20% of its total surface; Coll et al. 2010). Mean surface temperature and salinity increase along a longitudinal gradient from west to east and along a latitudinal gradient from north to south (MyOcean 2014). These physical and chemical gradients run opposite to primary production that is higher in the northwestern areas and lower in the southeastern parts of the Mediterranean Sea (Danovaro et al. 1999). Changing environmental conditions have modified community composition across the Mediterranean Sea and favoured the introduction of non-indigenous species (see overview in Philippart et al. 2011). The Mediterranean Sea offers a diversity of environmental conditions to a diversity of marine organisms (de Madron et al., 2011), and so is well-suited to a trait-based ecomorphological analysis.

European fisheries in the Mediterranean Sea are governed by a specific management framework (EC 2006). This framework combines effort controls with restrictions on fleets (fishing license, engine power limitation, cod-end mesh size, maximum length of net, etc.), time-at-sea, minimum landing size, and various spatial management measures (temporal bans, restricted areas). For example, the use of towed gears is prohibited within 3 nautical miles of the coast or within the 50 m isobaths where that depth is reached at a shorter distance from the coast. In contrast to European Atlantic fisheries, Mediterranean fisheries are geographically limited, with most shelf areas being exploited only by vessels from the bordering country.

The aim of this study is to describe community structures across the northern continental shelves (10-800m depth) of the Mediterranean Sea using the trait-based functional group approach, and to examine spatial and temporal patterns in functional groups over the last two decades. Given the strong geographic environmental gradients and the spatial management

strategies, we hypothesized that geographical differences in functional group changes arose as a result of these drivers.

MATERIAL AND METHODS

MEDITS scientific surveys

Biomass data were collected during annual bottom trawl surveys conducted in May-July from 1994 to 2012 in twelve GSAs (Geographical Sub-Areas, www.gfcm.org) in the northern part of the Mediterranean Sea (Fig. 1). The data for certain GSAs have missing years. Hauls were performed over the continental shelf (10 m to 200 m depth) and on the upper part of the continental slope (200 m to 800 m) within the framework of the MEDITS scientific project (Bertrand et al. 2002). All fish, cephalopods and other invertebrate species were weighed and counted. Identification was done to the lowest taxonomic level possible. Only taxa identified at the species level were assigned to one of the functional groups (see below) and kept for further analyses. The proportion of species included in the statistical analyses represented over 80% on average of the total biomass caught annually.

The retained species included pelagic species for which we assumed that the data collected from bottom trawl surveys could be used to assess spatio-temporal trends at the group level. We verified this assumption by comparing time trends of acoustic derived abundance and biomass estimates of several small pelagic species in the Gulf of Lions (C. Saraux, unpublished data) with the bottom trawl derived estimates used in this study (see Fig. S1 and S2 in supplementary material). Significant rank correlations were found for both biomass and abundance at the functional group level and for nearly 40% of species at the population level which confirms the suitability of bottom trawl survey data to assess the spatial and temporal trends of pelagic species groups. Similar results were also observed by Fiorentino et al. (2013) in the Strait of Sicily for *Sardina pilchardus* and *Engraulis*

encrasicolus. They compared MEDITS biomass and abundance data with MEDIAS acoustics data over the 16 years of surveys and concluded that MEDITS bottom trawl surveys represented a complementary source of information on the stocks of the two studied species.

Species morphological traits

Nine morphological traits related to habitat and diet were measured either in the field or from images of fish species using the Image J software (version 1.47, <http://imagej.nih.gov/ij/>) (see Granger et al. 2015 for details and Brind'Amour et al. 2015 for the data) (Table 1). Organisms and pictures were collected in seven GSAs between 2011 and 2013 on MEDITS bottom trawl surveys (GSA5, 7, 10, 11, 18, 19, 29), with an average of 30 species by area. Seven of the chosen traits consisted of ratios (to avoid size effects) calculated from continuous biological characteristics that had already proved useful for determining functional groups (Albouy et al. 2011, Reecht et al. 2013). The two remaining traits, body shape (Webb 1984) and pigmentation (Nikolsky 1963), were categorical. A total of 1486 individuals from 72 fish species were collected. For each species, continuous traits were computed as the mean of at least three individuals. We then used the species morphological traits matrix to build functional groups (FG, see statistical analyses below). Invertebrates were not included in these analyses.

Environmental drivers

Environmental and pressure variables were derived from MyOcean Products (MyOcean 2014) and landing statistics (FAO 2014, 2015). We selected environmental variables characteristic of environmental gradients (i.e. climate change and changes in productivity) and anthropogenic pressures (i.e. exploitation), for which effects on fish communities are documented in the literature. A subset of MyOcean environmental estimates were processed

comprising monthly means for each of three environmental variables: temperature ($^{\circ}\text{C}$), total nitrate (mmol.m^{-3}), and dissolved oxygen (mmol.m^{-3}). Temperature came from the 3D Mediterranean Sea Physics Reanalysis model (1990-2012), whereas total nitrate and dissolved oxygen were taken from the 3D Mediterranean Sea Biogeochemistry Reanalysis model (1999-2010). Both models have a horizontal grid resolution of $1/16^{\circ} \times 1/16^{\circ}$ with 72 unevenly spaced depth levels (Oddo et al. 2009). The model values corresponding to the deepest water (temperature and dissolved oxygen) or the surface (total nitrate) layer in each grid cell were selected at the locations of the survey hauls (see Fig.1) and then averaged across locations within areas to obtain time series for each variable. It is worth stressing that the precision of environmental variables used here depended on the precision of MyOcean models. Five summary statistics were prepared for each time series: average across annual means, minimum and maximum of annual means, standard deviation of annual means and slope of a linear time trend model for mean values. These five statistics for the three environmental variables were used as explanatory variables for modelling relative FG biomass changes.

Landings statistics for the period 1994-2012 were extracted from the FAO database and served as a proxy for exploitation pressure. The FAO data were filtered by selecting species composing the FGs. The selected landings corresponded on average to 69% of total landings. The remaining 31% corresponded to higher level species groups (e.g., Marine fish nei, Marine molluscs nei). We then summed the species-specific landings by FAO division and divided them by the surface areas given in Caddy et al. (1995). The standardized catches (t.km^{-2}) by FAO division were then assigned to GSAs. This was done by assigning the same time series of landings to the GSAs pertaining to the same FAO division.

Statistical analyses

Fig. 2 provides an overview of statistical analyses carried out for i) defining functional groups, ii) analysing spatial and temporal FG biomass changes, and iii) assessing the relationship between the environment and FG biomass changes. These steps are detailed below.

Defining functional groups

Fish species were assigned to functional groups by conducting a hierarchical cluster analysis using Ward's agglomeration method (Ward 1963) on Gower's distance calculated for the species morphological traits matrix (Gower 1971). Gower's distance was chosen as we had both continuous and categorical variables with (sometimes) missing values. The number of groups to retain was determined using the Silhouette criteria (Rousseeuw 1987) and visually confirmed.

To test the significance of species functional groups we carried out a one-sided permutation test. Under the null hypothesis H_0 , the average similarity (Sim) of morphological traits grouped together by the analysis described above does not differ significantly from the average similarity obtained under random groupings of species (Sim') for the same number of groups and the same number of species within each group. Under the alternative hypothesis H_1 , the observed similarity is greater or equal to the one obtained by permutation, $Sim \geq Sim'$. The test was carried out by 1) permuting the rows of the species*traits matrix, i.e. reallocating species among FGs, 2) estimating the similarity within each random FG, 3) computing the average of all within-FG similarities, 4) building the distribution of similarities under H_0 based on steps 1) - 3) for 9999 permutations, and 5) calculating the proportion of permuted values being equal to, or larger than, the observed similarity value; this proportion is the p-value under H_0 .

We compared the species composition of the traits-based functional groups with four qualitative trophic (invertebrate, invertebrate and fish, fish, and plankton feeders) and six habitat guilds (benthic, demersal, benthic-demersal, pelagic, benthic-pelagic, and reef) from the literature (Harmelien-Vivien et al. 1989, Relini et al. 2002, Stergiou and Karpouzi 2002, Le Bourg et al. 2015, Froese and Pauly 2016) using the Adjusted Rand Index (ARI; Hubert & Arabie 1985). The ARI is commonly used in data clustering as a measure of the similarity between two partitions and takes values between 0 and 1, with 0 indicating that the two partitions do not agree for any species and 1 indicating that the partitions are exactly the same.

After building functional groups, we created a functional network by ordering functional groups along two dimensions: diet (horizontal axis) and habitat (vertical axis). The groups were ordered based on our results and diet and habitat information were gathered from the literature (e.g. Stergiou & Karpouzi 2002, Kalogirou et al. 2012). To complement the functional network we added five functional groups corresponding to benthic cephalopods (3 species), pelagic cephalopods (3 species), benthic megafauna (4 species), plankton, and large fish predators. No morphological data were available for these supplementary groups but biomass time series were available for the two cephalopod groups and the benthic megafauna.

Identifying spatial and temporal patterns in functional group biomass

We summarised temporal trends in functional group (FG) biomasses by computing the relative percentage difference in biomass between the mean biomass of the first three years ($B_{FG,first}$) and the mean for the last three years ($B_{FG,last}$) for each functional group $\Delta B_{FG}=100(B_{FG,last} - B_{FG,first})/B_{FG,first}$. The bottom trawl data were used for all functional groups except plankton and large predators, which are not caught by the MEDITS gear. Biomass data were standardized by swept area without correction for differences in catchability. The calculations

were carried out for all functional groups represented in the functional network, except for large predators and plankton.

We searched for regional patterns in functional group temporal changes by conducting a principal components analysis (PCA) on the matrix of biomass changes ΔB_{FG} , with areas (GSAs) organised by rows and FGs by columns.

Assessing relationships between environment, landings and functional groups

Relationships between relative FG biomass changes ΔB_{FG} in the 12 GSAs (response variables) and environmental drivers as well as landings (explanatory variables) were tested using a multivariate regression tree (MRT) (Breiman et al. 1984, De'Ath & Fabricius 2000, De'Ath 2002). The MRT was conducted on the matrix of biomass changes ΔB_{FG} . MRT is a recursive partitioning method that splits the dataset of response variables successively into two groups, so that the variance in response variables within groups is minimized. The splitting procedure is continued until an over large tree is grown. It is then pruned back using a cross-validation method to define the size of the final tree. MRT can be used in cases of non-linear relationships between response and explanatory variables and multimodal distributions of response variables. MRTs were developed using the *mvpart* function (Therneau & Atkinson 2011) in the R software (R Development Core Team 2015).

RESULTS

Defining functional groups

Mean body size of the 72 retained species ranged from 6 cm (*Capros aper*) to 72 cm (*Lepidopus caudatus*). Hierarchical cluster analysis of morphological traits separated the species into two major clusters with overall nine functional groups, benthic-pelagic (FG1, FG5, FG6, FG7, FG9), and benthic groups (other FGs) (Fig. 3 & Fig. 4, Table S1 in

supplementary material). Benthic-pelagic groups were further divided into pelagic and demersal groups.

The first pelagic group (FG1) was characterized mainly by species with countershading bodies and species with silvery/reflective sides and large eye diameters, suggesting schooling fish foraging for moving prey in the water column or near the sea bottom (Table 2). This group included nekton feeders, feeding mainly on zooplankton (*Engraulis encrasicolus*) (Table S1). The second pelagic group (FG5) was composed of laterally-compressed species feeding chiefly on large zoobenthos and fish (e.g. *Pagellus erythrinus*). Fish included in FG5 had large mouth depths, indicative of feeding on large demersal prey.

The three demersal groups were composed of species with elongated bodies compressed anteriorly, feeding nocturnally in mid-water mainly on fish and cephalopods (FG6, e.g. *Conger conger*); fusiform species with mottled pattern or vertical bars living over sandy or rocky substrates feeding mainly on benthic fauna, small cephalopods, and fish (FG7, e.g. *Scyliorhinus canicula*); and round-shaped species feeding mainly on small invertebrates and fish, with the eyes dorsally positioned indicating a sedentary mode of life (FG9, e.g. *Trachinus draco*).

The four benthic groups of species were divided in two subgroups, one containing dorso-ventrally flattened species (FG2 and FG8) and the other one globe-like shaped species (FG3 and FG4). The first two groups are often buried in soft sediments and feed mainly on benthic macro-invertebrates or fish. The analysis separated rays (FG8) from flatfish (FG2). The two last groups were globe-like shaped species with either countershading, living over muddy/sandy substrates and feeding mainly on benthic invertebrates (FG3, e.g. *Aspitrigla cuculus*) or ambush feeders with wide mouths and mottled patterns or vertical bars indicative of good camouflage (FG4, e.g. *Lophius piscatorius*).

The significance of species functional groups was tested using permutations. The results indicated that the average similarity in morphological traits between species of the same FG was 38% larger than the average similarity in morphological traits between species of randomly created FGs (p-value < 0.001).

When compared with literature-derived feeding and habitat guilds, the nine functional groups were poorly associated with the six feeding guilds (ARI = 0.05) and moderately linked to the four habitat guilds (ARI = 0.22) (see Table S1 in supplementary material). Species groups created by combining feeding and habitat guilds were more dissimilar to FGs than habitat guilds alone (ARI = 0.07).

Spatial and temporal patterns in functional group biomass

The analysis of spatial and temporal patterns in group biomass changes was carried out for the nine FGs described above plus three additional FGs (FG10 benthic cephalopods, FG11 pelagic cephalopods, FG12 mobile benthic megafauna). No data were available for FG13 (plankton) and FG14 (large predators).

Comparison of the relative time trends during the period 1994 to 2012 for species within each FG revealed some opposing trends. For example, in FG1 *Trachurus trachurus* mainly decreased whereas *Engraulis encrasicolus* increased in several GSAs (Table S2 in supplementary material). Such inconsistencies of species biomass changes were observed for several FGs, suggesting some degree of compensation. Furthermore, the species contributing most to the observed FG trends varied among GSAs, showing spatial differences in species dynamics within functional groups.

Four broad temporal patterns emerged from the first two axes of the PCA of relative FG biomass changes in the 12 GSAs (Fig. 5). The first pattern was shared by GSA 18, southern

Adriatic Sea, and GSA19 and 20, Western and Eastern Ionian Seas respectively (I in Fig. 5). In these areas the biomass of almost all FGs increased, notably in the pelagic FGs of the network. The group of pelagic cephalopods (FG11), the laterally-compressed benthopelagic species (FG5), and the schooling pelagic feeders (FG1) displayed on average, respectively, 469%, 224%, and 125% more biomass at the end of the time series.

The second temporal pattern was exhibited by the Strait of Sicily (GSA16) where 83% of the FGs (10 out of 12) showed biomass increases (II in Fig. 5). The largest biomass increase was found for rays (FG8) and demersal elongated species (FG6) with 666%, 502% biomass increase, respectively.

The third temporal pattern was shared by three GSAs encompassing enclosed bays (GSA7 Gulf of Lions, GSA17 Northern Adriatic Sea and GSA22 Aegean Sea) and the Balearic Islands, GSA 5 (III in Fig. 5). It was characterised by a decrease in biomass in almost all FGs (8 out of 12), especially in the benthic groups located at the bottom of their functional networks. Mobile benthic megafauna (FG12), flatfish (FG2), and benthic cephalopods (FG10) decreased by 36%, 41%, and 28% respectively over the last two decades.

The fourth and final temporal pattern was shared by areas located in the western Mediterranean Sea (GSA 8 Corsica, GSA 11 Sardinia, GSA 9 Ligurian Sea, and GSA 10 Tyrrhenian Sea; IV in Fig. 5). It was characterized by an increase in the lower compartments of their networks (benthic megafauna - FG12, flatfish - FG2, and rays - FG8) and small decreases in some pelagic FGs such as pelagic cephalopods (FG11), and schooling pelagic nekton feeders (FG1). The increase in benthic biomass ranged from 100 to 140% whereas pelagic biomasses decreased between 5 and 15%.

Some FGs showed consistent time trends across all studied areas. The group of elongated piscivorous species (FG8) decreased in all areas (75% on average) except in the Strait of

Sicily where it increased considerably (222%). Species with laterally-compressed and fusiform bodies and eyes dorsally positioned (FG7) increased or remained stable in all areas.

Relationships between environment, landings and functional groups

Over the time period and spatial extent of the study, the three environmental variables representing near bottom water (temperature and dissolved oxygen) and surface (total nitrate) environmental conditions displayed different patterns (Fig.6). FAO landings and dissolved oxygen showed strong spatial variability but no geographic trend while bottom water temperature exhibited no spatial variability. Surface total nitrate concentrations did not show any geographic trend but displayed high values in the Gulf of Lions and the Northern Adriatic Sea.

Results from the multivariate regression tree analysis conducted on the matrix of relative functional group biomass changes underlined the significant explanatory contributions of interannual bottom water temperature variability (36.8% of variance explained), dissolved oxygen temporal trends (23.6%) and the average level of standardized FAO landings (8.5%). These three variables explained over 69% of the total variability between areas and separated the GSAs into four geographic groups (Fig.7). The geographic groups matched almost perfectly those identified with PCA above (groups I to IV in Fig. 5), except for the South Tyrrhenian Sea (GSA10) which in the PCA was grouped together with western Mediterranean areas while in the MRT it clustered with the Strait of Sicily (GSA16).

The environment in the first geographic group (A in Fig. 7), including the Adriatic and the Ionian Seas, displayed no significant temporal trends in dissolved oxygen (average slope = 0.09), varying bottom water temperatures ($SD = 0.6^{\circ}C$), and medium landing levels ($0.35t.km^{-2}$); concomitantly all but two functional groups increased. The second group of GSAs (B in Fig. 7), spanning the Tyrrhenian Sea and the Strait of Sicily, was associated with

small increases in dissolved oxygen (average slope = 0.35), stable temperatures (SD = 0.19°C), and low landings (0.12 t.km⁻²). In this group the biomass of all FGs increased, in particular those of demersal and benthic functional groups. The third geographic group (C in Fig. 7) was made up of enclosed areas (e.g., Gulf of Lions, Aegean Sea) and the Balearic Islands in which the biomass of all FGs decreased, except that of pelagic groups. The near bottom water environment was characterized by a medium increase in dissolved oxygen (average slope = 0.46), highly variable temperatures over the two decades (SD = 1.06°C) and high landings (0.46 t.km⁻²). The functional group biomass changes (decrease or no changes in pelagic FGs and increase in benthic FGs) in the fourth geographic group (Ligurian Sea and Sardinia; D in Fig. 7) were accompanied by large increases in dissolved oxygen (average time trend = 0.89), variable temperatures (SD = 0.53°C), and low landings (0.12 t.km⁻²).

DISCUSSION

The Mediterranean Sea has experienced severe environmental and anthropogenic pressure changes during the last decades (increasing water temperature, fishing pressure, introduction of non-indigenous species; Lloret et al. 2001, Coll et al. 2010, Lotze et al. 2011, de Madron et al. 2011) affecting species composition and thus diversity and foodwebs in various ways. Several studies have looked at the temporal (Lotze et al. 2011) and spatial distribution (Garibaldi & Caddy 1998, Gaertner et al. 2007, Mouillot et al. 2011, Coll et al. 2012) of a range of ecological indices, yet few have analysed jointly spatio-temporal trends of these indices (but see Rochet et al. 2010, Granger et al. 2015). According to our results, over the last two decades the biomass of nearly half of the twelve studied functional groups were increasing on the continental shelf of the northern Mediterranean Sea while a quarter decreased and another quarter remained stable. The relative changes in functional group

biomass in the benthic-pelagic network components of the Mediterranean Sea did not show any longitudinal nor latitudinal trends but were mainly explained by interannual variability in bottom water temperature and dissolved oxygen, were weakly related to the level of landings, and not at all related to surface total nitrate concentrations.

Functional groups of species

Several studies have found that morphology is a poor indicator of diet (Motta et al. 1995, Albouy et al. 2011), though it is a better predictor of diet than body size alone (Reecht et al. 2013). We found little overlap between functional groups and the trophic guilds identified in the literature, confirming the feeding plasticity of fish in comparison to the stringency of the habitat constraint. Indeed, the diet of species grouped in the same FG can differ or even include members of the same group (e.g. *Blennius ocellaris* and *Scorpaena porcus* in FG4; Harmelin-Vivien et al. 1989), leading to apparent trophic incongruities in our FGs. These incongruities might be explained by the fact that the selected morphological traits reflect the "potential" niches of species, including both the habitat and trophic dimensions as defined by Hutchinson (1957). These incongruities can also be explained by intra guild predation, i.e. when predators are also competitors at certain age-classes (Polis and Holt 1992). This is the case, for instance, in FG4 between *Scorpaena porcus* and *Blennius ocellaris*. Indeed, juveniles of *Scorpaena porcus* are competitors of *Blennius ocellaris* as consuming the same prey. However, as *Scorpaena porcus* grow, the adults may predate on *Blennius ocellaris*. It is thus not surprising to have in some functional groups species sharing the same habitat but temporally differing in their diet. The diet of a species may also vary spatially and opportunistic feeding is quite often observed (Trenkel et al. 2005). The habitat of a species can therefore be considered more stable than its observed diet. Further, Reecht et al. (2013)

also found that a number of species show size-dependent (ontogenetic) shifts in morphological traits.

Spatio-temporal changes in Mediterranean exploited ecosystems

Studies investigating the spatial and/or temporal distribution of fish and benthic species have focused mainly on species diversity, such as beta and gamma diversity, functional diversity, and species richness (Gaertner et al. 2007, Mouillot et al. 2011, Gaertner et al. 2013, Granger et al. 2015), and to a lesser extent on community structure (Gaertner et al. 2005). Changes in functional group biomass have not been assessed (to our knowledge) in the Mediterranean Sea and certainly not on such a large geographic scale which makes comparison of our results with published studies difficult. Coll et al. (2012) recently acknowledged in a paper reviewing the contributions of various food web models to the management of Mediterranean marine resources, that spatio-temporal analyses of Mediterranean community time series should be considered as a priority in the future. Such empirical analyses enlighten the potential mechanisms of changes in Mediterranean exploited communities and validate the data that can be further used in mechanistic models.

In a recent study, Granger et al. (2015) investigated the spatial and temporal variability of various functional, phylogenetic and traditional species diversity indices across the Mediterranean Sea basin during the period 1994 to 2012 using the abundance of demersal fish species from the MEDITS data. While spatial variability was detected, they found high temporal stability in all indices. In contrast, in this study using data from mostly the same surveys, we found significant temporal changes in functional group biomasses. The difference might be due to the fact that i) the analysed data were different (abundance-based fish indices for Granger et al. versus biomasses of demersal, pelagic fish and invertebrate species in this

study) and ii) time trends being difficult to identify using global measures of diversity such as species richness or Rao's functional diversity index (Rao 1964) or functional indices investigating specific facets of diversity (Villéger et al. 2008). Rao's index weighs the distance between species by their respective abundances which means that temporal changes can be masked by compensation between functionally different species (Leibold et al. 1997, Hulot et al. 2014). By contrast, our functional group approach focused solely on changes of functionally similar species. In addition, temporal changes in some of our functional groups have been confirmed by local studies. For instance, using an ecosystem model for the Gulf of Lions and the Balearic Islands (geographic group C in this study), Corrales et al. (2015) identified the important role of schooling pelagic nekton feeders (here FG1) and pelagic cephalopods (here FG11) which we also found to be important for explaining differences in geographic groups (Fig. 5 & 7).

Some authors have interpreted the observed longitudinal gradient in fish community diversity in the Mediterranean Sea as resulting from productivity differences (e.g. Mouillot et al. 2011, Coll et al. 2012). In contrast, studies focusing on demersal species biomass (or abundance) from survey data found similar patterns to this study (Gaertner et al. 2007, Gaertner et al. 2013, Granger et al. 2015). Our modelling approach (MRT) divided the Mediterranean Sea into four broad geographic areas. This partition did not follow a strict longitudinal gradient but was explained by local environmental variables highly sensitive to oceanographic features such as bottom water temperature and dissolved oxygen concentration. Fishing levels also explained to a certain extent temporal changes in FGs across the Mediterranean areas.

Water temperature variability can modify community structure by favouring small species with higher metabolic rates and fast generation times rates that can quickly adapt to environmental changes (Sommer et al. 1986). However, it is difficult to pinpoint any biological processes of temperature variability at the functional group level as currently no studies have addressed such question at this scale. Species with different tolerance ranges may compensate within a single FG (Peck et al. 2004). This is also the case for potential fishing effects that might be confounded with those of temperature changes (Rijnsdorp et al. 2009). Nevertheless, the GSA group (Group C) with the highest number of decreasing functional groups (i.e. 2/3 of FGs) and notably FGs including large piscivorous species (FG4, 7, 8, 9) were also those displaying the largest interannual temperature variability and the highest standardised landings.

The trend in dissolved oxygen concentration was also a significant variable explaining changes in functional composition of GSAs. Dissolved oxygen is expected to affect primarily benthic organisms (Diaz and Rosenberg 1995) by imposing physiological constraints under hypoxic conditions. In this study, the group of GSAs with the largest temporal slope in dissolved oxygen (group D) was also the one with the largest increase in benthic FG biomass (FG2,8,10,12). However, the observed concentrations of dissolved oxygen were all above thresholds that would induce physiological stress on benthic organisms (Vaquer-Sunyer and Duarte 2008).

Practical implications

The European Marine Strategy Framework Directive (MSFD; 2008/56/EC) aims to achieve ‘Good Environmental Status’ of marine ecosystems by 2020. This EC directive reinforces the need for simple indicators, including for food web health (D4). One of the D4

indicators requires assessing *abundance trends of functionally important selected groups/species* (indicator 4.3.1). Rombouts et al. (2013) noted the lack of operational indicators for this indicator. Our work is a direct contribution to the MSFD as it provides a methodology to define functional groups of species that can be compared across areas. The total biomass in each functional group would then be computed annually instead of being assessed between the beginning and the end of a time period as it was done here. To assess good environmental status, reference points could be derived from historical data or models.

Several modelling studies investigating threats to marine diversity and marine resources have been carried out in the Mediterranean Sea. These studies used ecosystem models such as EwE (Libralato et al. 2010, Banaru et al. 2013, Hattab et al. 2013, Moutopoulos et al. 2013) or qualitative loop analysis (Rochet et al. 2010). These modelling tools require a robust way of determining groups of species that will serve as building blocks for the model. For instance, the number of FGs defined in the different EwE models varied from 12 to 55, with an average of 31 groups (Banaru et al. 2013, Hattab et al. 2013, Moutopoulos et al. 2013, Coll & Libralato 2012). Basing such functional groups upon the morphology of species might be an alternative or complementary way of determining the number of fish groups sharing the same habitat and/or prey. This is particularly relevant for studies aiming to investigate the impact of fishing on the ecosystem as fisheries generally target simultaneously several species, and species caught together often have similar ecological requirements or occupy the same habitats (McClanahan et al. 2008).

In conclusion, our study revealed that Mediterranean fish communities have changed over the last two decades as a result of environmental drivers and fishing. Nearly half of the functional groups increased in biomass while a quarter decreased and another quarter remained stable over the time period. The potential causes of these changes agree with those

reported in the literature (Coll et al. 2012, Rochet et al. 2010, Caddy et al. 2000, Garcia 2011). Finally, our study provides an objective way for grouping fish species into functional groups that can serve as food web indicators.

Acknowledgements. The authors would like to thank the crews of the different MEDITS surveys. They also acknowledge Axelle Denis, Carla Di Santo, Thomas Cavallé and Andréa Theil who were involved in the species morphological measurements and Claire Saraux for the PELMED dataset. Financial support was provided by the EU project PERSEUS (grant agreement number 287600). We are grateful to anonymous referees for their helpful reviews.

LITERATURE CITED

- Abarca-Arenas LG, Ulanowicz RE (2002) The effects of taxonomic aggregation on network analysis. *Ecological Modelling* 149:285-296
- Albouy C, Guilhaumon F, Villéger S, Mouchet M, Mercier L, Culioli JM, Tomasini JA, Le Loc'h F, Mouillot D (2011) Predicting trophic guild and diet overlap from functional traits: statistics, opportunities and limitations for marine ecology. *Marine Ecology Progress Series* 436:17-28
- Banaru D, Mellon-Duval C, Roos D, Bigot J, Souplet A, Jadaud A, Beaubrun P, Fromentin JM (2013) Trophic structure in the Gulf of Lions marine ecosystem (north-western Mediterranean Sea) and fishing impacts. *Journal of Marine Systems* 111:45-68
- Bertrand J, De Sola L, Papaconstantinou C, Relini G, Souplet A (2002) The general specifications of the MEDITS surveys. *Scientia Marina* 66:9-17
- Breiman L, Friedman JH, Olshen RA, Stone CJ (1984) *Classification and Regression Trees* Vol. Wadsworth and Brooks/Cole, Monterey, California
- Brind'Amour A, Mérigot B, Ordines F, Carbonara P, Follesa M, Jadaud A, Maiorano P, Rabiller M, Denis A, Di Santo C, Cavallé T, Theil A, Spedicato M T (2016)

- Morphological traits measured for 89 fish species sampled in the Mediterranean Sea during MEDITS scientific surveys. <http://dx.doi.org/10.17882/41825>
- Brind'Amour A, Boisclair D, Dray S, Legendre P (2011) Relationships between species feeding traits and environmental conditions in fish communities: a three-matrix approach. *Ecological Applications* 21:363–377
- Caddy JF (2000) Marine catchment basin effects versus impacts of fisheries on semi-enclosed seas. *ICES Journal of Marine Science* 57:628-640
- Caddy JF, Refk R, Do-Chi T (1995) Productivity estimates for the Mediterranean: evidence of accelerating ecological change. *Ocean and Coastal Management* 26:1-18
- Cartes JE, Abello P, Lloris D, Carboneli A, Torres P, Maynou F, de Sola LG (2002) Feeding guilds of western Mediterranean demersal fish and crustaceans: an analysis based on a spring survey. *Scientia Marina* 66:209-220
- Christensen V, Pauly D (1992) ECOPATH II--A software for balancing steady-state ecosystem models and calculating network characteristics. *Ecological Modelling* 61: 169-185
- Coll M, Libralato S (2012) Contributions of food web modelling to the ecosystem approach to marine resource management in the Mediterranean Sea. *Fish and Fisheries* 13:60-88
- Coll M, Piroddi C, Albouy C, Ben Rais Lasram F, Cheung WWL, Christensen V, Karpouzi VS, Guilhaumon F, Mouillot D, Paleczny M, Palomares ML, Steenbeek J, Trujillo P, Watson R, Pauly D (2012) The Mediterranean Sea under siege: spatial overlap between marine biodiversity, cumulative threats and marine reserves. *Global Ecology and Biogeography* 21:465-480
- Coll M, Piroddi C, Steenbeek J, Kaschner K, Ben Rais Lasram F, Aguzzi J, Ballesteros E, Bianchi CN, Corbera J, Dailianis T, Danovaro R, Estrada M, Froggia C, Galil BS, Gasol

- JM, Gertwagen R, Gil J, Guilhaumon F, Kesner-Reyes K, Kitsos MS, Koukouras A, Lampadariou N, Laxamana E, López-Fé de la Cuadra CM, Lotze HK, Martin D, Mouillot D, Oro D, Raicevich S, Rius-Barile J, Saiz-Salinas JI, Vicente CS, Somot S, Templado J, Turon X, Vafidis D, Villanueva R, Voultziadou E (2010) The Biodiversity of the Mediterranean Sea: Estimates, Patterns, and Threats. *PLoS ONE* 5:e11842
- Colloca F, Carpentieri P, Balestri E, Ardizzone G (2010) Food resource partitioning in a Mediterranean demersal fish assemblage: the effect of body size and niche width. *Marine Biology* 157:565-574
- Corrales X, Coll M, Tecchio S, Bellido JM, Fernández AM, Palomera I (2015) Ecosystem structure and fishing impacts in the northwestern Mediterranean Sea using a food web model within a comparative approach. *Journal of Marine Systems* 148:183-199
- Danovaro R, Dinet A, Duineveld G, Tselepidis A (1999) Benthic response to particulate fluxes in different trophic environments: a comparison between the Gulf of Lions–Catalan Sea (western-Mediterranean) and the Cretan Sea (eastern-Mediterranean). *Progress in Oceanography* 44:287-312
- De'ath G (2002) Multivariate regression trees: A new technique for modeling species-environment relationships. *Ecology* 83:1105-1117
- De'ath G, Fabricius KE (2000) Classification and regression trees: A powerful yet simple technique for ecological data analysis. *Ecology* 81:3178-3192
- Diaz RJ Rosenberg R (1995) Marine benthic hypoxia: A review of its ecological effects and the behavioural responses of benthic macrofauna. *Oceanography and Marine Biology* 33:245–303.
- Durrieu de Madron X, Guieu C, Sempéré R, Conan P, Cossa D, D'Ortenzio F, Estournel C, Gazeau F, Rabouille C, Stemmann L, Bonnet S, Diaz F, Koubbi P, Radakovitch O, Babin

M, Baklouti M, Bancon-Montigny C, Belviso S, Bensoussan N, Bonsang B, Bouloubassi I, Brunet C, Cadiou J-F, Carlotti F, Chami M, Charmasson S, Charrière B, Dachs J, Doxaran D, Dutay J-C, Elbaz-Poulichet F, Eléaume M, Eyrolles F, Fernandez C, Fowler S, Francour P, Gaertner JC, Galzin R, Gasparini S, Ghiglione J-F, Gonzalez J-L, Goyet C, Guidi L, Guizien K, Heimbürger L-E, Jacquet SHM, Jeffrey WH, Joux F, Le Hir P, Leblanc K, Lefèvre D, Lejeusne C, Lemé R, Loÿe-Pilot M-D, Mallet M, Méjanelle L, Mélin F, Mellon C, Mérigot B, Merle P-L, Migon C, Miller WL, Mortier L, Mostajir B, Mousseau L, Moutin T, Para J, Pérez T, Petrenko A, Poggiale J-C, Prieur L, Pujo-Pay M, Pulido-Villena, Raimbault P, Rees AP, Ridame C, Rontani J-F, Ruiz Pino D, Sicre MA, Taillandier V, Tamburini C, Tanaka T, Taupier-Letage I, Tedetti M, Testor P, Thébaud H, Thouvenin B, Touratier F, Tronczynski J, Ulses C, Van Wambeke F, Vantrepotte V, Vaz S, Verney R (2011) Marine ecosystems' responses to climatic and anthropogenic forcings in the Mediterranean *Progress in Oceanography* 91: 97-166

Dumay O, Tari PS, Tomasini JA, Mouillot D (2004) Functional groups of lagoon fish species in Languedoc Roussillon, southern France. *Journal of Fish Biology* 64:970-983

European Commission(2008) Directive 2008/56/EC of the European Parliament and of the Council of 17 June 2008 establishing a framework for community action in the field of marine environmental policy (Marine Strategy Framework Directive).

EC (2006) Council regulation (EC) No 1967/2006 of 21 December 2006 concerning management measures for the sustainable exploitation of fishery resources in the Mediterranean Sea, amending Regulation (EEC) No 2847/93 and repealing Regulation (EC) No 1626/94. *Official Journal of the European Union* L 409:11-85

- Fanelli E, Badalamenti F, D'Anna G, Pipitone C, Riginella E, Azzurro E (2011) Food partitioning and diet temporal variation in two coexisting sparids, *Pagellus erythrinus* and *Pagellus acarne*. *Journal of Fish Biology* 78 869 – 900
- FAO (2014) Fisheries and aquaculture software. FishStatJ - software for fishery statistical time series. . In: [online] IFFaAD (ed), Rome
- FAO (2015) Fisheries and aquaculture software. FishStatJ - software for fishery statistical time series. . In: [online] IFFaAD (ed), Rome
- Fiorentino F, Patti B, Colloca F, Bonanno A, Basilone G, Gancitano V, Garofalo G, Goncharov S, Gristina M, Sinacori G, Mazzola S (2013) A comparison between acoustic and bottom trawl estimates to reconstruct the biomass trends of sardine and anchovy in the Strait of Sicily (Central Mediterranean). *Fisheries Research* 147: 290-295
- Froese R. and D. Pauly. Editors (2016) FishBase. World Wide Web electronic publication. www.fishbase.org, (01/2016)
- Fulton E, Smith ADM, Johnson CR (2003) Effect of complexity on marine ecosystem models. *Marine Ecology Progress series* 253:1-16
- Gaertner J-C, Bertrand JA, Relini G, Papaconstantinou C, Mazouni N, de Sola LG, Durbec J-P, Jukic-Peladic S, Souplet A (2007) Spatial pattern in species richness of demersal fish assemblages on the continental shelf of the northern Mediterranean Sea: a multiscale analysis. *Marine Ecology Progress series* 341:191-203
- Gaertner J-C, Maiorano P, Merigot B, Colloca F, Politou C-Y, Gil De Sola L, Bertrand JA, Murenu M, Durbec J-P, Kallianiotis A, Mannini A (2013) Large-Scale Diversity of Slope Fishes: Pattern Inconsistency between Multiple Diversity Indices. *PLoS ONE* 8:e66753
- Garcia S M (2011) Long-term trends in small pelagic and bottom fisheries in the Mediterranean: 1950-2008. Plan Bleu, Valbonne.

- Gårdmark A, Casini M, Huss M, van Leeuwen A, Hjelm J, Persson L, de Roos AM (2015) Regime shifts in exploited marine food webs: detecting mechanisms underlying alternative stable states using size-structured community dynamics theory. *Philosophical Transactions of the Royal Society B* 370 : 20130262. <http://dx.doi.org/10.1098/rstb.2013.0262>
- Garibaldi L, Caddy JF (1998) Biogeographic characterization of Mediterranean and Black Seas faunal provinces using GIS procedures. *Ocean & Coastal Management* 39:211-227
- Gower JC (1971) A general coefficient of similarity some of its properties. *Biometrics* 27:857-871
- Granger V, Fromentin JM, Bez N, Relini G, Meynard C, Gaertner JC, Maiorano P, Garcia Ruiz C, Follesa C, Gristina M, Peristeraki P, Brind'Amour A, Carbonara P, Charilaou C, Esteban A, Jadaud A, Joksimovic A, Kallianiotis A, Kolitari J, Manfredi C, Massuti E, Mifsud R, Quetglas T, Refes W, Sbrana M, Vrgoc N, Spedicato MT, Mériçot B (2015) Large spatio-temporal monitoring highlights shift in Mediterranean fish diversity hotspots. *Progress in Oceanography* 130:65-74
- Gravel D, Poisot T, Abouy C, Velez L, Mouillot D (2013) Inferring food web structure from predator-prey body size relationships. *Methods in Ecology and Evolution* 4:1083-1090
- Guidetti P, Baiata P, Ballesteros E, Di Franco A, Hereu B, Macpherson E, Micheli F, Pais A, Panzalis P, Rosenberg AA, Zabala M, Sala E (2014) Large-Scale Assessment of Mediterranean Marine Protected Areas Effects on Fish Assemblages. *PLoS ONE* 9:e91841
- Harmelin-Vivien ML, Kaim-Malka RA, Ledoyer M, Jacob-Abraham SS (1989) Food partitioning among scorpaenid fishes in Mediterranean seagrass beds. *Journal of Fish Biology* 34: 715–734
- Hattab T, Lasram FBR, Albouy C, Romdhane MS, Jarboui O, Cury P, Le Loc'h F (2013) An ecosystem model of an exploited southern Mediterranean shelf region (Gulf of Gabes,

- Tunisia) and a comparison with other Mediterranean ecosystem model properties. *Journal of Marine Systems* 128:159-174
- Hubert L, Arable P (1985) Comparing Partitions. *Journal of Classification* 2:193-218
- Hulot FD, Lacroix G, Loreau M (2014) Differential responses of size-based functional groups to bottom–up and top–down perturbations in pelagic food webs: a meta-analysis. *Oikos* 123: 1291–1300
- Hutchinson GE (1957) Concluding remarks. *Cold Spring Harbor Symp Quant Biol* 22:415-427
- Jennings S, Renones O, Morales-Nin B, Polunin NVC, Moranta J, Coll J (1997) Spatial variation in the 15N and 13C stable isotope composition of plants, invertebrates and fishes on Mediterranean reefs: implications for the study of trophic pathways. *Marine Ecology Progress series* 146:109-116
- Kalogirou S, Wennhage H, Pihl L (2012) Non-indigenous species in Mediterranean fish assemblages: Contrasting feeding guilds of *Posidonia oceanica* meadows and sandy habitats. *Estuarine, Coastal and Shelf Science* 96:209-218
- Karachle PK, Stergiou KI (2010a) Gut length for several marine fish: relationships with body length and trophic implications. *Marine Biodiversity Records* 3:1-10
- Karachle PK, Stergiou KI (2010b) Intestine morphometrics of fishes: a compilation and analysis of bibliographic data. *Acta Ichthyologica et Piscatoria* 40:45-54
- Lamouroux N, Poff LN, Angermeier PL (2002) Intercontinental convergence of stream fish community traits along geomorphic and hydraulic gradients. *Ecology* 83:1792-1807
- Layman CA, Langerhans RB, Winemiller KO (2005) Body size, not other morphological traits, characterizes cascading effects in fish assemblage composition following commercial netting. *Canadian Journal of Fisheries and Aquatic Sciences* 62:2802-2810

- Le Bourg B, Daniela D, Claire S, Nowaczyk A, Le Luherne E., Jadaud A, Bigot J-L, Richard P (2015) Trophic niche overlap of sprat and commercial small pelagic teleosts in the Gulf of Lions (NW Mediterranean Sea). *Journal Of Sea Research*, 103, 138-146
- Leibold MA, Chase JM, Shurin JB, Downing AL (1997) Species Turnover and the Regulation of Trophic Structure. *Annual Review of Ecology and Systematics* 28: 467-494
- Libralato S, Coll M, Tempesta M, Santojanni A, Spoto M, Palomera I, Arneri E, Solidoro C (2010) Food-web traits of protected and exploited areas of the Adriatic Sea. *Biological Conservation* 143:2182-2194
- Lloret J, Lleonart J, Solé I, Fromentin JM (2001) Fluctuations of landings and environmental conditions in the north-western Mediterranean Sea. *Fisheries Oceanography* 10:33-50
- Lotze HK, Coll M, Dunne JA (2011) Historical changes in marine resources, food-web structure and ecosystem functioning in the Adriatic Sea, Mediterranean. *Ecosystems* 14:198-222
- McClanahan TR, Ruiz Sebastián C, Cinner J, Maina J, Wilson S, Graham NAJ Managing fishing gear to encourage ecosystem-based management of coral reefs fisheries. In. *Proc Proceedings of the 11th International Coral Reef Symposium*
- Möllmann C, Folke C, Edwards M, Conversi A (2015) Marine regime shifts around the globe: theory, drivers and impacts. *Philosophical Transactions of the Royal Society B* 370: 20130260. <http://dx.doi.org/10.1098/rstb.2013.0260>
- Motta PJ, Clifton KB, Hernandez P, Eggold BT (1995) Ecomorphological correlates in ten species of subtropical seagrass fishes: diet and microhabitat utilization. *Environmental Biology of Fishes* 44:37-60
- Mouillot D, Albouy C, Guilhaumon F, Ben Rais Lasram F, Coll M, Devictor V, Meynard CN, Pauly D, Tomasini JA, Troussellier M, Velez L, Watson R, Douzery EJ, Mouquet N

- (2011) Protected and threatened components of fish biodiversity in the Mediterranean sea. *Current Biology* 21:1-7
- Moutopoulos D, Libralato S, Solidoro C, Stergiou KI (2013) Toward an ecosystem approach to fisheries in the Mediterranean Sea: Multi-gear/multi-species implications from an ecosystem model of the Greek Ionian Sea. *Journal of Marine Systems* 113-114:13-28
- MyOcean (2014) MyOcean Products. Accessed August 20 2014.
- Niklas KJ, Enquist BJ (2001) Invariant scaling relationships for interspecific plant biomass production rates and body size. *Proceedings of the National Academy of Sciences* 98:2922-2927
- Nikolsky GV (1963) *The ecology of fishes*, Vol. T.F.H. Publications, Neptune City
- Oddo P, Adani M, Pinardi N, Fratianni C, Tonani M, Pettenuzzo D (2009) A nested Atlantic-Mediterranean Sea general circulation model for operational forecasting. *Ocean Science* 5:461-473
- Peck LS, Webb KE, Bailey DM (2004) Extreme sensitivity of biological function to temperature in Antarctic marine species. *Functional Ecology* 18: 625–630
- Petchey OL, Gaston KJ (2006) Functional diversity: back to basics and looking forward. *Ecological Letters* 9:741-758
- Philippart CJM, Anadon R, Danovaro R, Dippner JW, Drinkwater KF, Hawkins SJ, Oguz T, O'Sullivan G, Reid PC (2011) Impacts of climate change on European marine ecosystems: Observations, expectations and indicators. *Journal of Experimental Marine Biology and Ecology* 400:52-69
- Piet GJ (1998) Ecomorphology of a size-structured tropical freshwater fish community. *Environmental Biology of Fishes* 51:67-86

- Pinnegar JK, Trenkel VM, Tidd AN, Dawson WA, du Buit M-H (2003) Does diet in Celtic Sea fishes reflect prey availability? *Journal of Fish Biology* 63:197-212
- Polis GA, Holt RD (1992) Intraguild predation: The dynamics of complex trophic interactions. *Trends in Ecology and Evolution* 7: 151-154
- R Development Core Team (2010) R: A language and environment for statistical computing. In: R Foundation for Statistical Computing, Vienna, Austria
- Rao CR (1964) The use and interpretation of principal component analysis in applied research. *Sankhya Serie A* 26:329-358
- Reecht Y, Rochet MJ, Trenkel VT, Jennings S, Pinnegar JK (2013) Use of morphological characteristics to define functional groups of predatory fishes in the Celtic Sea. *Journal of Fish Biology* 83:355-377
- Relini G, Relini M, Torchia G, De Angelis G (2002) Trophic relationships between fishes and an artificial reef. *ICES Journal of Marine Science* 59: S36–S42
- Rochet M-J, Trenkel VM, Carpentier A, Coppin F, Gil de Sola L, Léauté J-P, Mahé J-C, Maiorano P, Mannini A, Murenu M, Piet GJ, Politou C-Y, Reale B, Spedicato MT, Tserpes G, Bertrand JA (2010) Do changes in environmental pressures impact marine communities? An empirical assessment *Journal of Applied Ecology* 47:741–750
- Rochet M-J, Collie JS, Trenkel VM (2013) How do fishing and environmental effects propagate among and within functional groups? *Bulletin of Marine Science* 89:285-315
- Rombouts I, Beaugrand G, Fizzala X, Gaill F, Greenstreet SPR, Lamare S, Le Loc'h F, McQuatters-Gollop A, Mialet B, Niquil N, Percelay J, Renaud F, Rossberg AG, Feral JP (2013) Food web indicators under the Marine Strategy Framework Directive: From complexity to simplicity? *Ecological Indicators* 29:246-254
- Rousseeuw PJ (1987)

- Silhouettes: a graphical aid to the interpretation and validation of cluster analysis. *Journal of Computational and Applied Mathematics* 20:53-65
- Sibbing FA, Nagelkerke LAJ (2001) Resource partitioning by Lake Tana barbs predicted from fish morphometrics and prey characteristics. *Reviews in Fish Biology and Fisheries* 10:393-437
- Southwood TRE (1977) Habitat, the templet for ecological strategies. *Journal of Animal Ecology* 46:337-365
- Stergiou KI, Karpouzi VS (2002) Feeding habits and trophic levels of Mediterranean fish. *Reviews in Fish Biology and Fisheries* 11:217-254
- Sommer U, Gliwicz ZM, Lampert W, Duncan A (1986) The PEG-model of seasonal succession of planktonic events in fresh waters. *Arch. Hydrobiologia* 106: 433–471
- Therneau TM, Atkinson B (2011) R port of rpart by Brian Ripley. Some routines from vegan - Jari Oksanen. Extensions and adaptations of rpart to mvpart by Glenn De'ath. mvpart: Multivariate partitioning. R package version 1.4-0. <http://CRAN.R-project.org/package=mvpart>
- Thompson RM, Brose U, Dunne JA, Hall RO Jr., Hladyz S, Kitching RL, Martinez ND, Rantala H, Romanuk TM, Stouffer DB, Tylianakis JM (2012) Food webs: reconciling the structure and function of biodiversity *Trends in Ecology & Evolution* 27: 689-697
- Trenkel VM, Pinnegar JK, Dawson WA, du Buit MH, Tidd AN (2005) Spatial and temporal structure of predator–prey relationships in the Celtic Sea fish community. *Marine Ecology Progress Series* 299:257–268.
- Vaquer-Sunyer R, Duarte CM (2008) Thresholds of hypoxia for marine biodiversity. *Proceedings of the National Academy of Sciences* 105: 15452–15457

- Vezina AF, Platt T (1988) Food web dynamics in the ocean. 1. Best-estimates of flow networks using inverse methods Marine Ecology Progress series 42:269-287
- Villéger S, Mason NH, Mouillot D (2008) New multidimensional functional diversity indices for a multifaceted framework in functional ecology Ecology 89: 2290 -2301
- Ward JHJ (1963) Hierarchical grouping to optimize an objective function. Journal of the American Statistical Association 58:236-244
- Webb PW (1984) Form and function in fish swimming. Scientific American 251:58-68

FIGURE CAPTIONS

Fig. 1 Location of sampling stations in the 12 studied areas during the period 1994-2012.

GSA5: Balearic Islands, GSA7:Gulf of Lions, GSA8: Corsica, GSA9: North & Central Tyrrhenian, GSA10: Southern Tyrrhenian, GSA11: Sardinia, GSA16: Strait of Sicily, GSA17: Northern Adriatic Sea, GSA18: Southern Adriatic Sea, GSA19: North-Western Ionian Sea, GSA20: Eastern Ionian Sea, GSA22: Aegean Sea and Crete (incl. GSA23).

Fig. 2 Flowchart of the datasets and statistical analyses conducted to define functional groups, assess spatial and temporal patterns in functional group changes, and test relationships between the environment and functional group changes.

Fig. 3 Dendrogram of species groups as defined by the hierarchical cluster analysis on the average values of morphological traits by species (i.e. species traits matrix). The matrix included 72 species and nine morphological traits (see Table 1).

Fig. 4 Schematic food web drawn from the positioning of the fifteen functional groups (FG) included in the study. Ellipsoid FGswere defined by traits-based analyses whereas rectangular FGs were added based on expert judgement as no morphological traits were available (see Table 2 for a description of groups). The number in parentheses is the number of the FG. For grey groups, no biomass data were available but they were included to provide a synoptic view of the functional network.

Fig. 5 Geographic clusters identified by PCA on the relative biomass changes in 12 Mediterranean geographic statistical areas. The insetshows the contribution of the 12 functional groups to the geographic pattern (see text).

Fig. 6 Graphical summary of the spatial and temporal variability of five environmental variables considered in this study. The values correspond to averages across years of annual averages across sampling stations in Figure 1. The bars indicate interannual standard deviations. Arrows characterize linear trends in annual means estimated from linear regressions. FAO divisions and GSA correspondence for the landings: Gulf of Lions: GSA7 ; Adriatic Sea: GSA17, GSA18, GSA19, GSA20; Aegean Sea: GSA22, GSA23; Sardinia: GSA8, GSA9, GSA10, GSA11, GSA16.

Fig. 7(a) Map showing membership of the 12 studied areas to four geographic groups (A to D) identified by multivariate regression tree analysis of functional group biomass changes. (b) Summary of the significant environmental variables. (c) Average relative temporal changes in functional group biomass for each geographic group.

Fig. 1

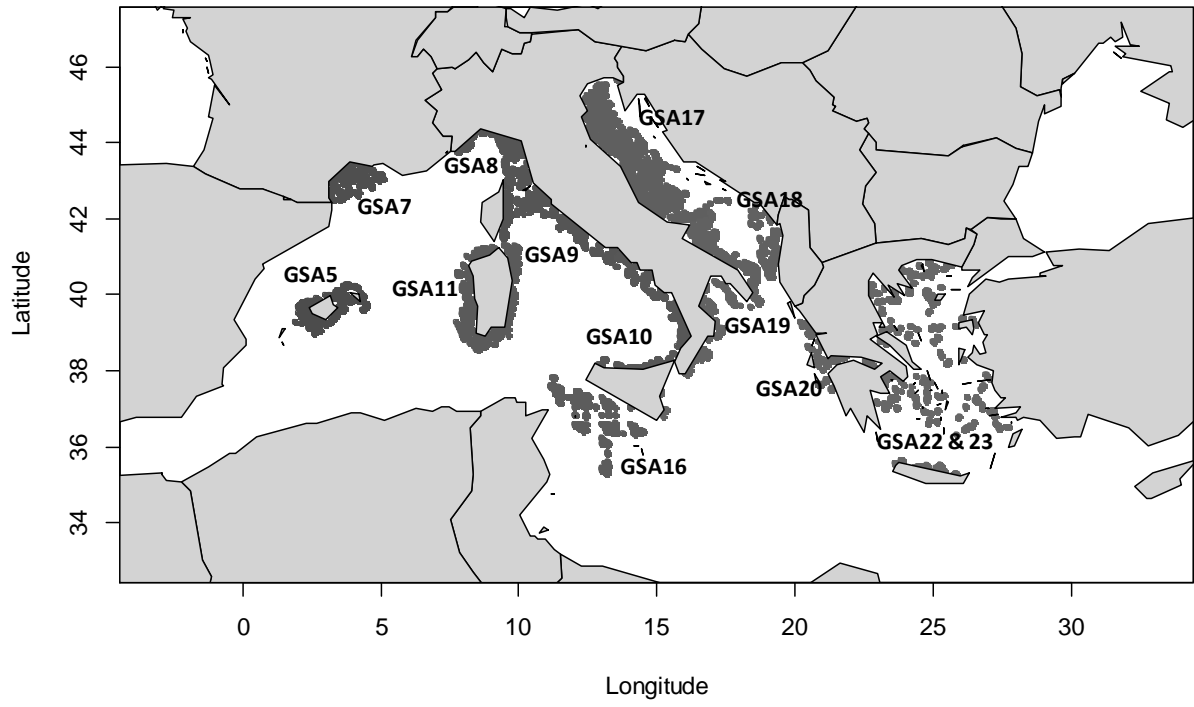


Fig. 2

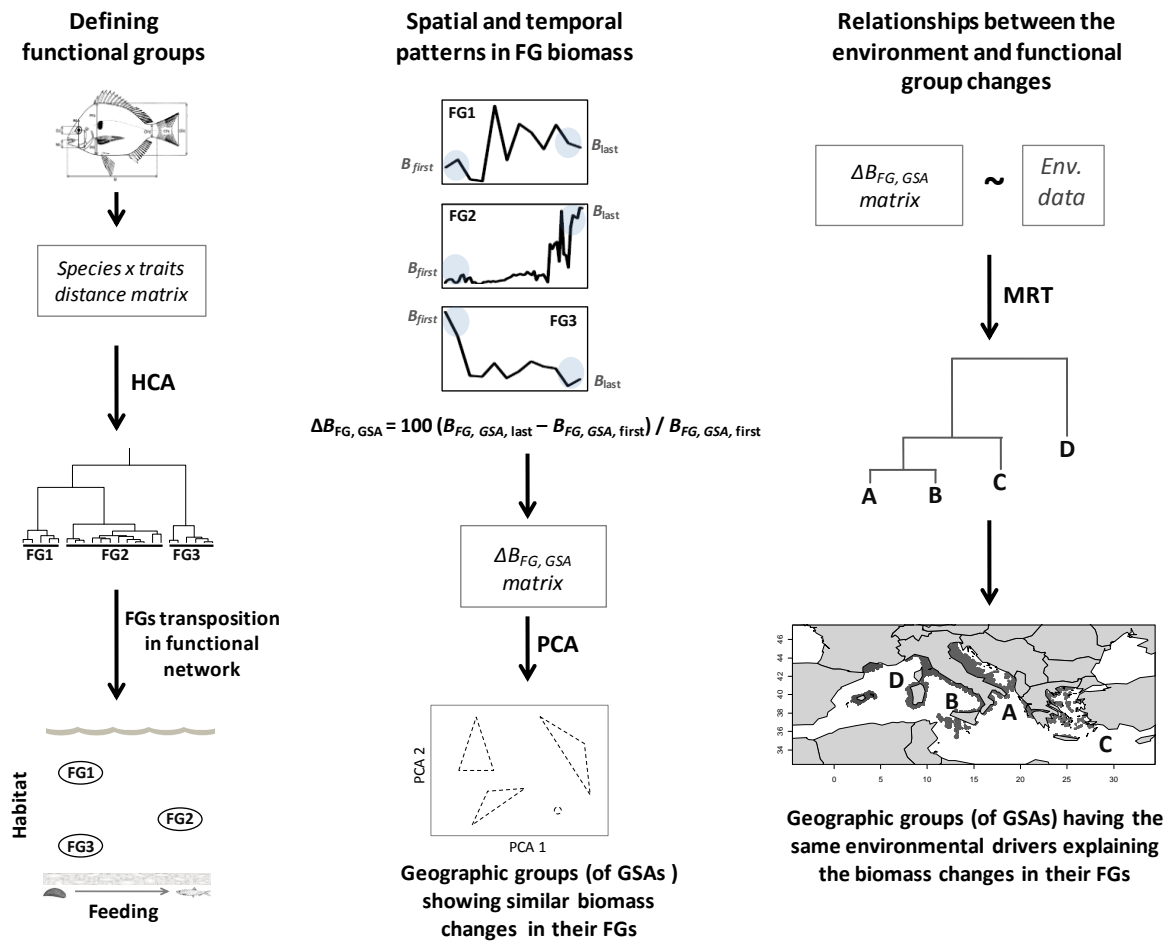


Fig. 3

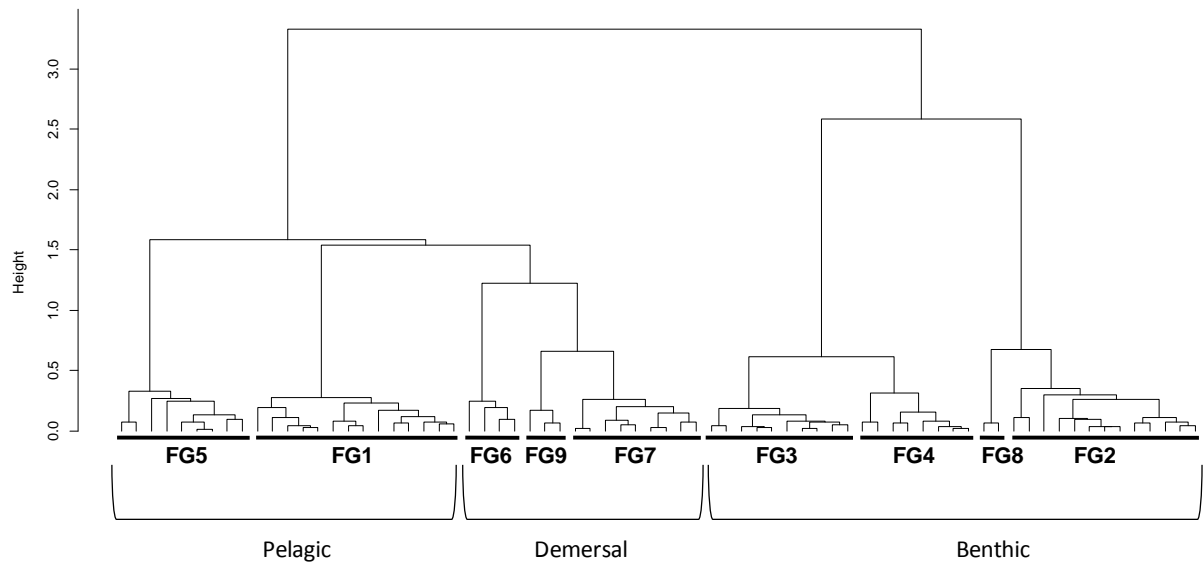


Fig. 4

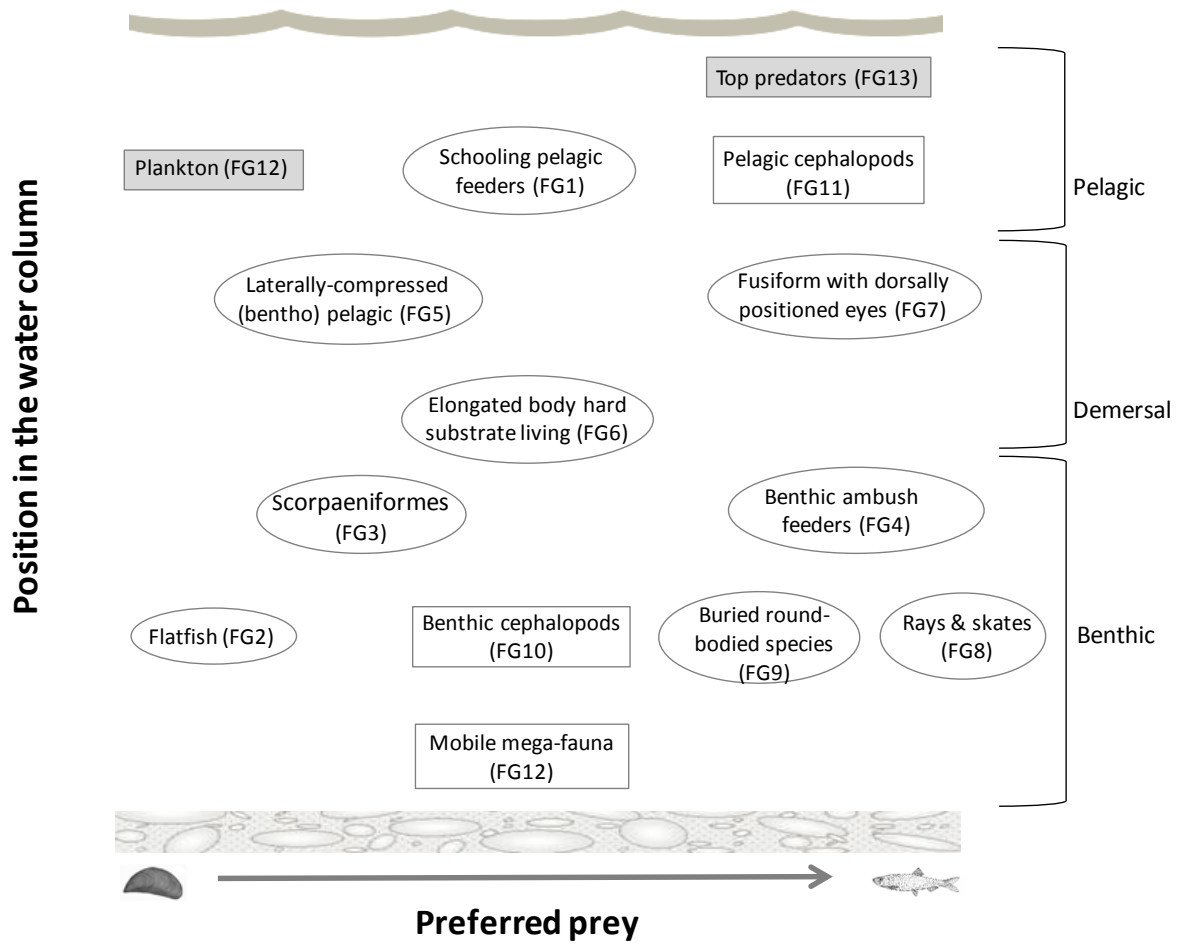


Fig. 5

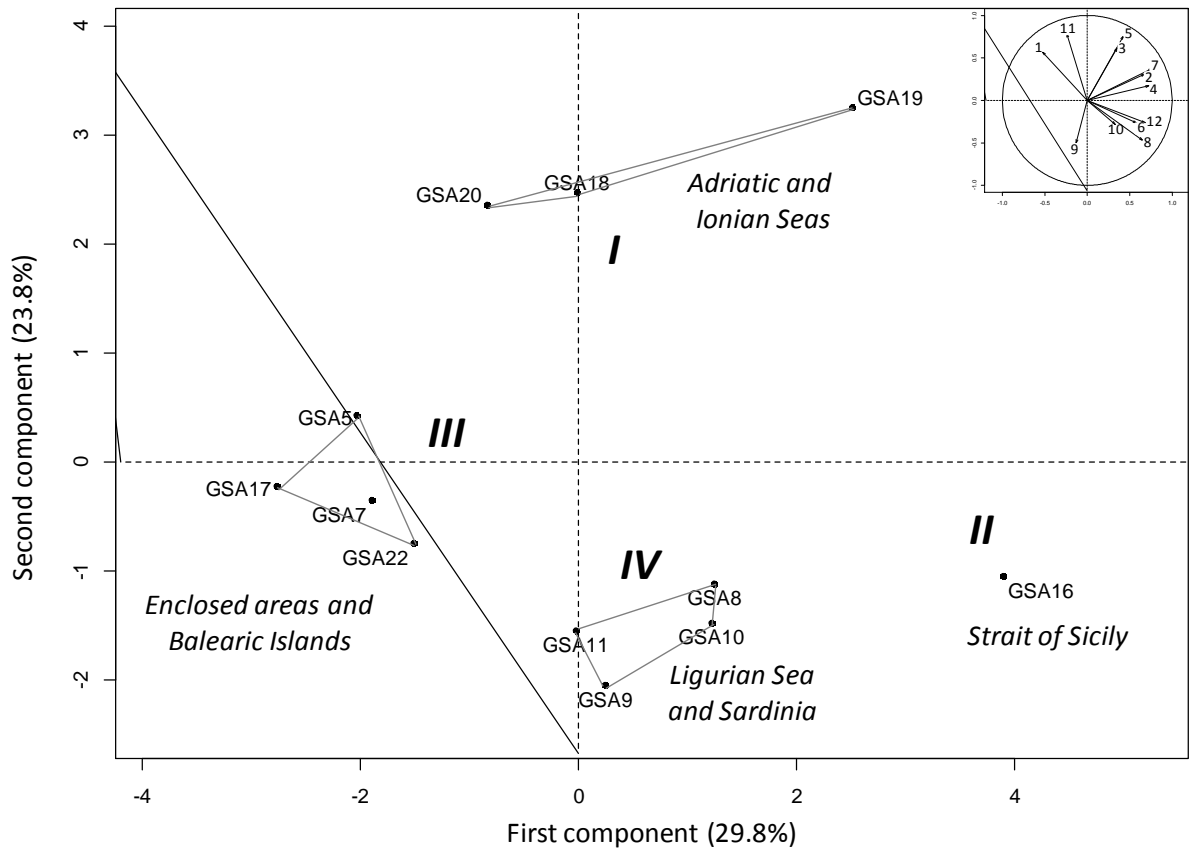


Fig. 6

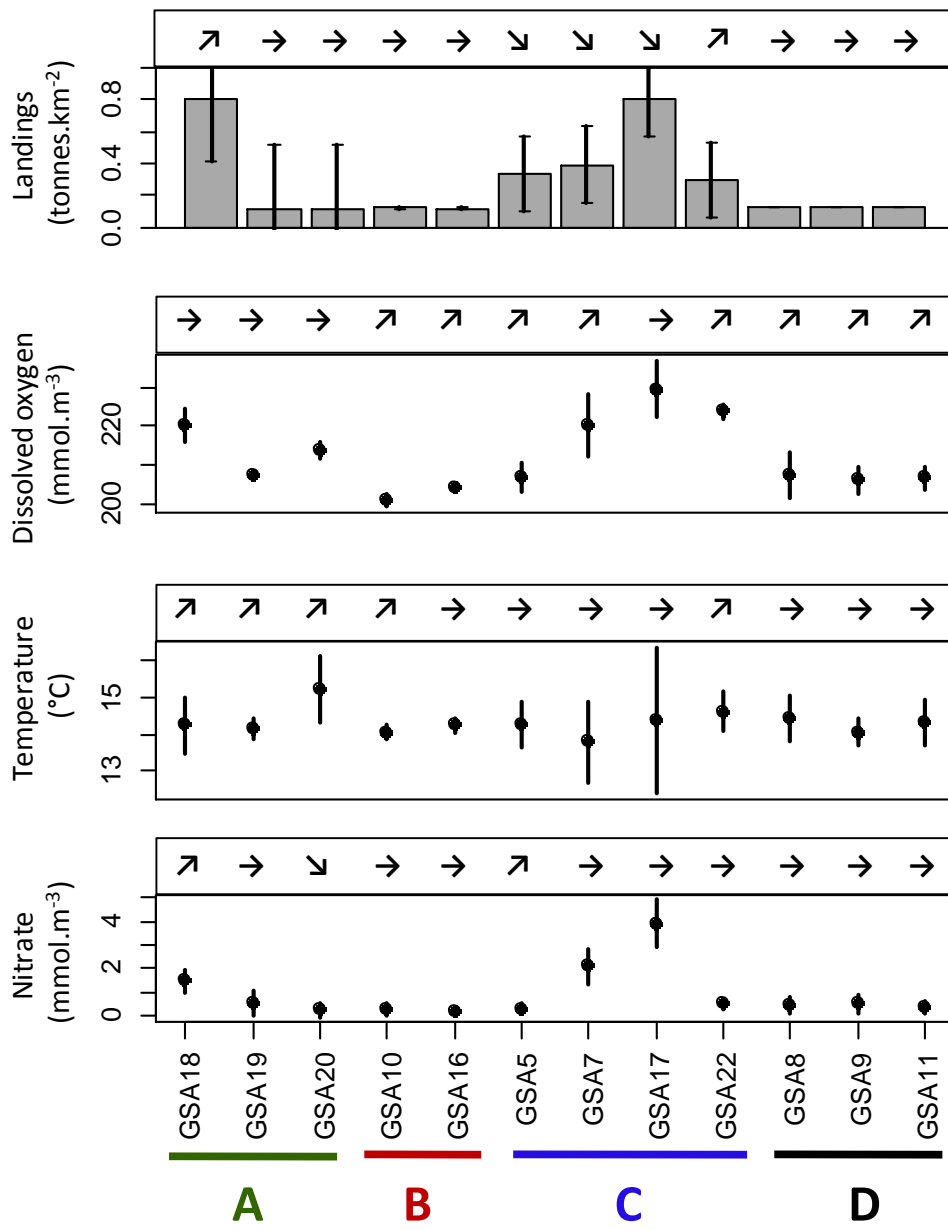


Fig. 7

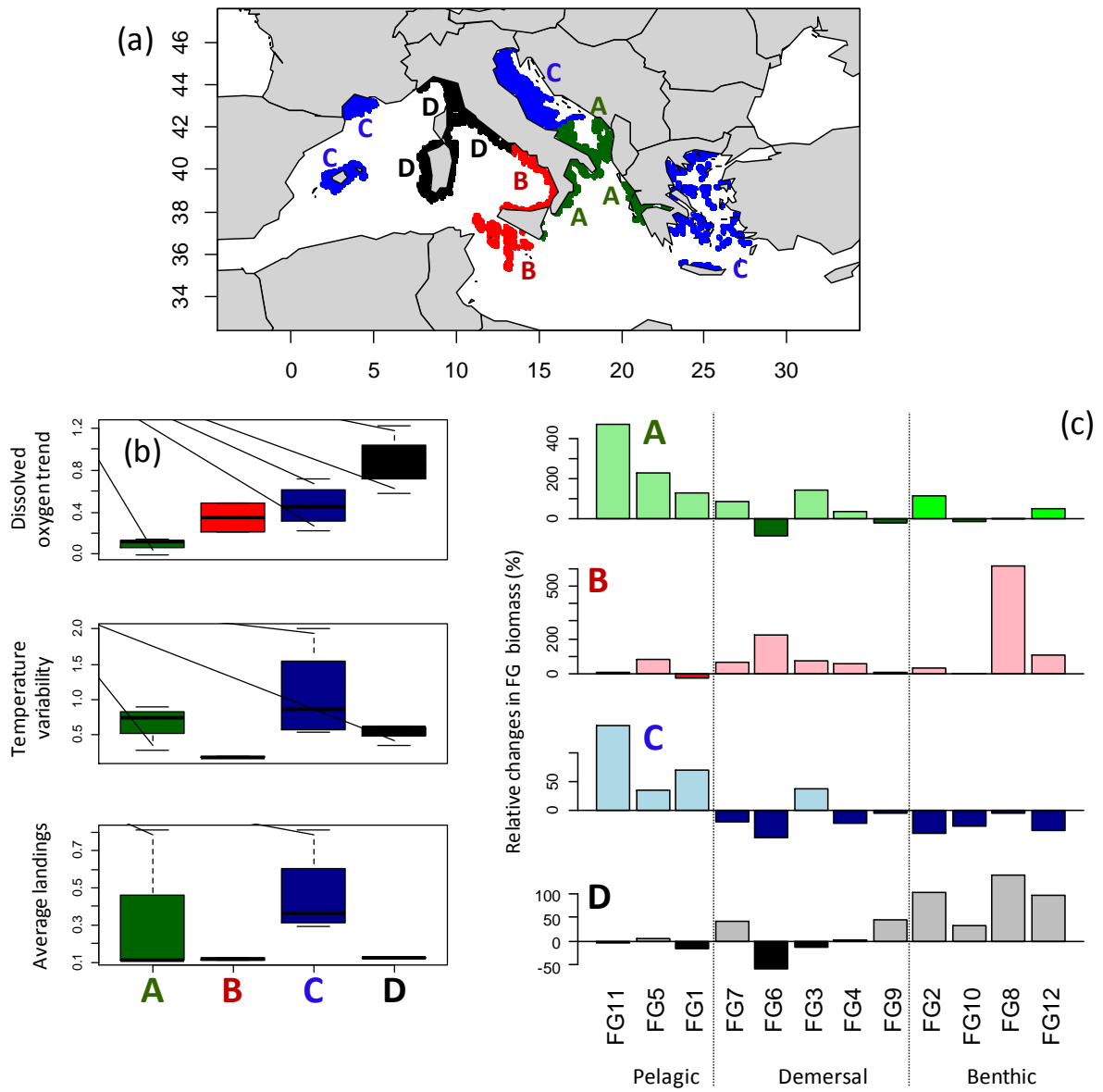


Table 1. Morphological traits related to diet and habitat used to group species into functional groups.

Morphological trait	Calculation	Related function and ecological interpretation
Body depth	Ratio of standard length to body depth	Diet. Related to the hydrodynamic ability of fish species (Sibbing & Nagelkerke 2001).
Caudal length	Ratio caudal fin length to caudal fin depth	Diet and prey capture. Associated with swimming ability of fish. Small values indicate low swimming ability.
Eye diameter	Diameter of the eye standardized by head length	Habitat and Diet. Detection of prey and visual acuity of predatory fish. Hunting fish have higher values.
Eye position	Ratio of distance between the bottom of the head and the eye centre along the head depth axis, to head length	Habitat. Assumed to be related to vertical position in the water column . Low values (i.e. eyes laterally positioned) indicates pelagic habit whereas high values (i.e. eyes positioned dorsally) indicate a more sedentary mode of life
Pectoral fin position	Ratio of distance between the insertion of pectoral fin and the bottom of the body, to body depth at the level of the pectoral fin insertion	Diet. Related to manoeuvrability at slow speeds and facility to maintaining position. Low values indicating pectoral fin laterally positioned (i.e. highly manoeuvrable)
Mouth depth	Ratio of vertical oral gap to standard length	Diet. Size of the captured prey
Oral gap position	Ratio of distance bottom of head-mouth to head depth along the vertical axis of the eye	Habitat and Diet. Feeding position in the water column and size and types of potential prey. This ratio is closely related to the categories of Motta et al.

Pigmentation	Qualitative assignment from 1 to 4	<p>(1995) and Dumay et al. (2004). Small ratios indicate mouth ventrally positioned whereas large ratios indicate a terminal mouth position.</p> <p>Habitat and behaviour. Categories based on Nikolsky (1963): (1) silvery or reflective side-solitary pelagic (2) countershading with dark lateral band-schooling pelagic (3) mottled pattern or vertical bars-vegetal or benthic rocks (4) countershading without either silveriness or lateral band-benthic over a sand bottom</p>
Body shape	Qualitative assignment from 1 to 6	<p>Habitat. Categories from Webb (1984) and the general types of fish morphology: (1) fusiform (2) compressed (3) round (4) filiform (5) depressed (6) globe-like shape</p>

Table 2 Ecological description of the functional groups derived from morphological traits. ° Additional FG for which survey data were available but no traits were measured. * Additional FGs for which no data and no morphological measurements were available.

FG	Group	Habitat (Stergiou and Karpouzi 2002)	Main diet (Harmelien-Vivien et al. 1989, Stergiou and Karpouzi 2002, Relini et al. 2002, Le Bourg et al. 2015)	Main species	Description (Harmelien-Vivien et al. 1989, Stergiou and Karpouzi 2002, Relini et al. 2002, Le Bourg et al. 2015, Froese and Pauly 2016)
1	Schooling pelagic feeders	Pelagic or nocturnal pelagic feeders	Mainly nekton (zooplankton or fish)	<i>Engraulis encrasicolus</i> , <i>Spicarasmaris</i> ,	Mainly species with countershading body with dark lateral band (often schooling) with large eye diameter. Species feeding either on zooplankton or nocturnally on cephalopods and fish
2	Flatfish	Benthic (buried)	Mainly benthic endo- and epifauna	<i>Citharus linguatula</i> , <i>Lepidorhombus boscii</i>	Flatfish with countershading body pigmentation living over muddy or sandy bottoms and feeding mainly on macro-invertebrates
3	Scorpaeniformes	Benthic	Epifauna and fish	<i>Eutrigla gurnardus</i> , <i>Lepidotrigla cavillone</i>	Globe-like species with countershading (without either silveriness or lateral band) body pigmentation living over muddy or sandy bottoms and feeding mainly on macro-invertebrates and fish

4	Benthic ambush species	Benthic	Mainly fish and/or zoobenthos	<i>Lophius budegassa</i> , <i>Lophius piscatorius</i>	Globe-like species with wide mouth and mottled pattern or vertical bars indicative of good camouflage (rocky ambush feeders). Species feeding mainly on fish and benthic fauna
5	Laterally-compressed benthic-pelagic	Benthic-pelagic	Zoobenthos	<i>Diplodus annularis</i> , <i>Pagellus erythrinus</i>	Laterally-compressed species with countershading pigmentation and dark lateral band feeding mainly on worms, molluscs and small crustaceans
6	Elongated body hard substrate living	Demersal	Mainly fish and cephalopods	<i>Lepidopus caudatus</i> , <i>Cepola macrophthalma</i>	Species with elongated body compressed anteriorly, living over sandy or rocky substrates feeding mainly on crustaceans, fish, and cephalopods
7	Fusiform with dorsally positioned eyes	Demersal	Mainly fish	<i>Scyliorhinus canicula</i> , <i>Galeus melastomus</i>	Fusiform species with mottled pattern or vertical bars living over sandy substrates or benthic rocks and feeding mainly on fish. Species with eyes dorsally positioned (i.e. relatively high values of eyes position)
8	Rays& skates	Benthic (buried)	Mainly fish	<i>Raja clavata</i> , <i>Raja asterias</i>	Dorso-ventrally flattened species with mottled pattern or vertical bars necessary for good camouflage (ambush feeders). Species often buried in sandy or gravelly bottoms and feeding mainly on fish
9	Round-bodied demersal species	Demersal	Fish and/or zoobenthos	<i>Trachinus draco</i> , <i>Uranoscopus scaber</i>	Round bodied and sedentary species waiting for its prey in sandy or muddy bottoms
10°	Benthic	Benthic	Mainly large	<i>Eledone cirrhosa</i> ,	Benthic cephalopods feeding on invertebrates

	cephalopods		zoobenthos	<i>Octopus vulgaris</i>	
11 °	Pelagic and demersal cephalopods	Pelagic	Mainly fish	<i>Illex coindetii, Loligo vulgaris</i>	Cephalopods feeding mainly on fish and crustaceans
12°	Mobile megafauna	Benthic	Carnivorous	<i>Nephrops norvegicus, Parapenaeus longirostris</i>	Benthos (mobile megafauna)
13*	Plankton	Pelagic	Invertebrate/algae		Plankton
14*	Top predators	Pelagic	Fish		Large piscivores
