

# 2017 French oceanographic cruises report



<http://doi.org/10.13155/55723>

IRSI/SISMER/18-028



<b>1</b>	<b><i>Those involved</i></b> .....	<b>4</b>
1.1	French Oceanographic Fleet JSU joint service unit and national assessment commissions .....	4
1.2	SISMER .....	5
<b>2</b>	<b><i>Oceanographic cruises</i></b> .....	<b>7</b>
2.1	Definition .....	7
2.2	Cruise listing .....	7
2.3	Chief scientists' rules and duties .....	7
2.4	Transmission of summaries .....	7
<b>3</b>	<b><i>Access to cruises and data</i></b> .....	<b>8</b>
3.1	Cruise management system (SGC) .....	8
3.2	Cruise database .....	8
<b>4</b>	<b><i>cruises report</i></b> .....	<b>10</b>
4.1	Background.....	10
4.2	Year 2017.....	12
4.2.1	Breakdown of cruises by managing organization .....	12
4.2.2	Breakdown of cruises by client organization .....	12
4.3	<b>Cruises by vessel</b> .....	<b>13</b>
4.3.1	Cruises referenced at SISMER.....	13
4.3.1.1	Cruises by RV L'Alis.....	14
4.3.1.2	Cruises by RV L'Antéa .....	16
4.3.1.3	Cruises by RV Côtes de la Manche .....	18
4.3.1.4	Cruises by RV Haliotis .....	20
4.3.1.5	Cruises by RV L'Astrolabe .....	22
4.3.1.6	Cruises by RV L'Atalante .....	24
4.3.1.7	Cruises by RV L'Europe .....	26
4.3.1.8	Cruises by RV Marion Dufresne.....	28
4.3.1.9	Cruises by RV Pourquoi pas? .....	30
4.3.1.10	Cruises by RV Téthys II.....	32
4.3.1.11	Cruises by RV Thalassa .....	34
4.3.1.12	Cruises by RV Thalia.....	36
4.3.1.13	Cruises aboard other vessels .....	39
4.4	List of cruises .....	40
4.5	Cruises not received .....	51
<b>5</b>	<b><i>Contacts</i></b> .....	<b>52</b>
<b>6</b>	<b><i>Acronyms</i></b> .....	<b>53</b>



## Introduction

This document, written by Nolwenn Danioux (IRSI/SISMER), reports on the French oceanographic cruises conducted in 2017. It was drawn up by IFREMER, and more specifically by the SISMER (French acronym for Scientific information systems for the SEA) department which oversees managing the metadata and data produced by French research cruises.

It provides a detailed description of the role of the various players managing French ocean-going facilities and of the means to archive cruise information and oceanographic data. It presents the fleet's activity in 2017 and provides dynamic access to cruise information through the new research cruise catalogue: <http://campagnes.flotteoceanographique.fr/>.

The electronic version of this document is available at the following address:

<http://doi.org/10.13155/55723>.

Clicking on the hypertext links gives direct access to the cruise descriptions.

The reports for French oceanographic cruises are also available via IFREMER's institutional archive, Archimer, whose address is: <http://archimer.ifremer.fr/>.

SISMER thanks:

- ✓ the chief scientists of 2017 cruises
- ✓ GENAVIR,
- ✓ Aurélie Feld and Sylvie Van Iseghem (IFREMER/DFO),
- ✓ Yves Gouriou and Dominique Lopes (IRD),
- ✓ Hélène Léau and Valérie Hadoux (IPEV),
- ✓ Malika Oudia and Pascal Morin (CNFC), and
- ✓ Viviane Bout-Roumazeilles (CNFH).

They have enabled us to collect the information needed to draft this report and have thus contributed to enhancing the usability and value of the measurements-at-sea effort.

# 1 Those involved

The main ocean research vessels are managed by the following organizations:

- **CNTD/INSU** (French national scientific research center / national institute for sciences of the universe),
- **IFREMER** (French research institute for exploitation of the sea),
- **IPEV** (French polar institute – Paul Emile Victor),
- **IRD** (French research institute for cooperative development, formerly ORSTOM),
- **FRENCH NAVY/SHOM** (French Navy's hydrographic and oceanographic service).

The first 4 organizations are grouped together in a joint service unit, FRENCH OCEANOGRAPHIC FLEET JSU OR UMS-FOF,, whose objective is the coordinated management of the French oceanographic fleet major research infrastructure (MRI) giving priority to serving the scientific community, in compliance with the specificities of its members, specifically based on the assessment of proposals for scientific and technological research cruises carried out by the national assessment committees (CNFH and CNFC).

The French scientific community also has access to other European vessels (United Kingdom, Germany, Spain, The Netherlands, Norway) through the OFEG (Ocean Facilities Exchange Group) of which IFREMER is one of the 6 members.

Finally, SISMER ensures that the data related to these cruises are permanently stored.

## 1.1 FRENCH OCEANOGRAPHIC FLEET JSU JOINT SERVICE UNIT AND NATIONAL ASSESSMENT COMMISSIONS

Since 2008, the French sea-going facilities for oceanographic research from CNRS, IFREMER, IPEV and IRD have made up the French oceanographic very large research infrastructure called TGIR FOF.

A significant step was made for integration of French ocean-going resources in March 2011, under the aegis of the Ministry of Higher Education and Research, when the French oceanographic fleet joint service unit was created, initially for a 4-year period, then extended to the end of 2017.

The unit's assigned objective is to improve the management of the French ocean research fleet, which was until now distributed amongst these four operators.

The setting up of this UMS Joint Service Unit with unified governance should enable the public authorities to have an overarching view of this very large research infrastructure (TGIR) in the context of supervising public policies and clear the way for a comprehensive strategic vision which is currently lacking.

To meet this objective, **three missions** have been defined:

- develop integrated scheduling of vessels and large-scale equipment open to national calls for tender (offshore and inshore),
- ensure foresight, defining and coordinating the fleet development plan, taking into account the requirements of national public-sector operators who are not members of the UMS (TAAF, FRENCH NAVY),
- coordinate investment policies.

IFREMER has been entrusted since 1<sup>st</sup> January 2018 with the responsibility for the entire French oceanographic fleet.

On the UMS FLEET website (<http://www.flotteoceanographique.fr/>) are descriptions and activity of all vessels and vehicles of all USM members, cruise schedules and information about cruise applications and cruises conducted.

In deciding on the scheduling for seagoing facilities, the FLEET JSU steering committee relies, amongst other things, on the assessments of ocean research cruise proposals made by two national commissions following the national call for ocean-going and coastal cruises:

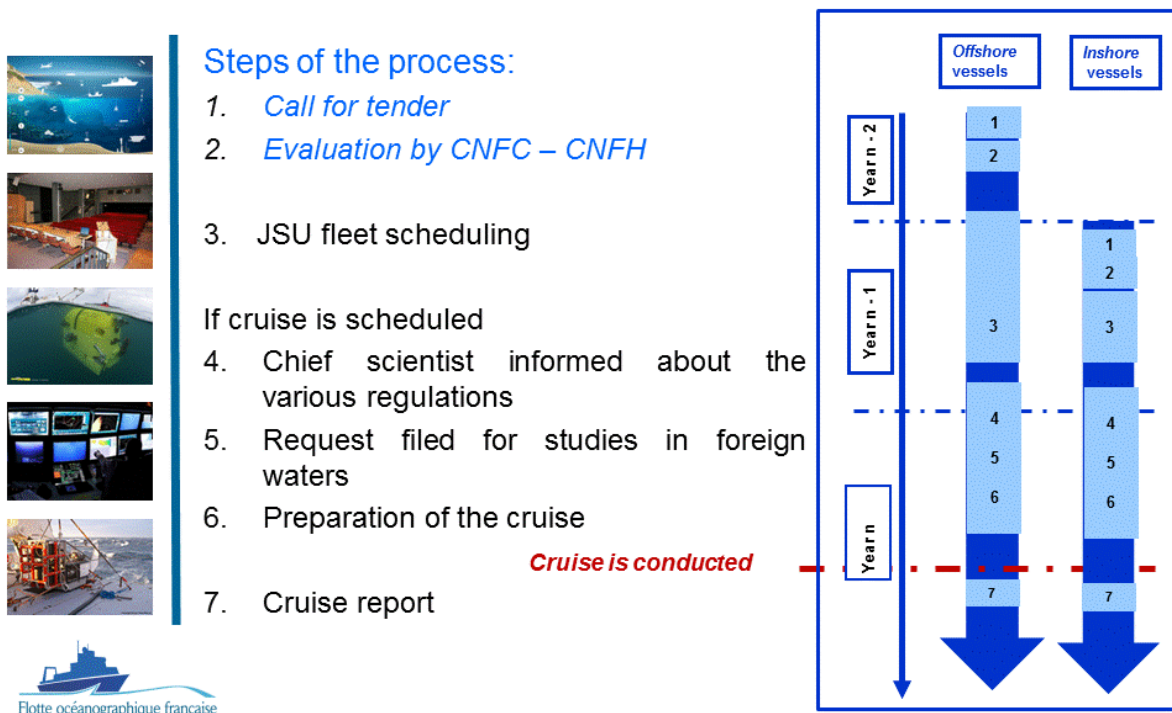
- the **National ocean-going fleet commission (CNFH)**, for cruise projects requiring ocean research vessels from the French offshore oceanographic fleet.
- the **National coastal fleet commission (CNFH)**, for cruise projects requiring ocean research vessels from the French inshore oceanographic fleet.

The role of these commissions is also to:

- to assess, a posteriori, the results from coastal oceanographic cruises performed using French oceanographic resources;
- to respond to requests from the Scientific and strategic orientations committee (COSS) to take part in drawing up advice concerning the sea-going resources for oceanographic research.

The diagram below shows how the cruise process functions, from application to achievement.


## The scheduling process



### 1.2 SISMER

It has been proved that without permanent archiving, done following well established standards, 30% of the acquired data is lost by the end of 10 years. The cost of using facilities for data acquisition at sea is so high that it is essential to implement the resources and means necessary for good data preservation.

SISMER (<http://data.ifremer.fr/SISMER>) is an IFREMER department located at its Brittany center. It is part of the IRSI (Research and information system infrastructures) department.



It acts as an NODC (National Oceanographic Data Center). Since March 2017, SISMER accredited as an NODC from the IODE (International Oceanographic Data and Information Exchange) programme of UNESCO's Intergovernmental Oceanographic Commission. As such, SISMER maintains the catalogue of French oceanographic cruises and has the remit to database all data acquired aboard French research vessels.

To meet the needs of the scientific community, it both develops, working with the ISI (Information systems engineering) service in the IDM (IT and marine data) department, and utilizes marine-related information systems and databases. The service manages and archives the data collected during French oceanographic cruises and keeps an inventory of them. It also manages real-time data from various operational oceanographic systems (Coriolis database).

SISMER manages the French national oceanographic database, which saves, standardizes and under very specific rules disseminates data from various fields of marine science, like hydrology, marine biochemistry, currentometry, gravimetry, magnetometry, seismics, bathymetry, acoustic imaging, physical-chemical seabed characteristics, biology and the deep-sea environment. The data can also come from French research laboratories taking part in surveys at sea.

It archives the data, along with information about its source, the experimental conditions and the methods of collection used (metadata). It applies quality control inspections in accordance with international standards and distributes the data and metadata using standardized formats.

It makes an active contribution to French, European and international working groups devoted to standardization and exchange of data. It coordinates the SeaDataNet pan-European network marine data centres which aim to link the main European oceanographic data centers and thus give users access on line to distributed databases through a single portal.

**Data which is incorrectly archived or not archived will ultimately be lost for good.**

**Cruise data which is incorrectly referenced (CSR sheet incorrectly or not completed) are inaccessible and therefore ultimately lost.**

**The value of data acquired at sea, in both scientific and financial terms represents a legacy which must be preserved.**

## 2 Oceanographic cruises

### 2.1 DEFINITION

An "oceanographic cruise" is a set of days during which a vessel acquired observational data. This can be outings of one day (station vessels), several days (inshore vessels) or several weeks (offshore vessels).

"French cruise" means a cruise for which the home organization of the client (chief scientist) - or of the contracting authority - is French.

Any cruise classified « Confidential Defence » or considered as such and protected is not visible on line. Those cruises are taken into account for the historical report but are not counted in the yearly report.

### 2.2 CRUISE LISTING

Taking inventory of cruises is done in several steps:

- Based on scheduled ocean cruise programmes. This is done with the help of the fleet operators' scheduling services;
- At the end of each cruise, in compliance with the procedure in effect, the chief scientist sends a description of the cruise to SISMER. The summary can be completed directly on line (<http://forms.ifremer.fr/sismer/csr/>).

A template (called a CSR – Cruise Summary Report) is also part of the [Compte-rendu de la campagne](#) made available on the UMS FLOTTE site for vessels of the JSU fleet.

This action is carried out in compliance with the procedure followed aboard the vessels of the JSU (<http://www.flotteoceanographique.fr/Campagnes-scientifiques>) and with the "Vade-Mecum for inshore oceanographic vessels users' guide" (<http://cir.dt.insu.cnrs.fr/docfiches.html>) from INSU, IFREMER and IRD.

- The information thus gathered is then archived in the SISMER database. Each cruise is given a track number (single identifier).

A DOI (Digital Object Identifier) is also assigned to each non-confidential cruise performed aboard a vessel of the Fleet JSU and whose chief scientist is clearly identified. These DOI enable the cruises to be reliably and lastingly cited in scientific publications. Their main objective is to describe the cruises as scientific experiments and highlight the French fleet.

### 2.3 CHIEF SCIENTISTS' RULES AND DUTIES

In keeping with the protocol in effect, once the chief scientist has been notified that the cruise has been scheduled, he or she must learn about a number of regulations and inform all the members of the scientific team who will embark about them. These texts especially deal with: the [rights and obligations in terms of archiving and disseminating data](#) acquired aboard vessels, the [role which the chief scientist is expected to play](#) on board the vessel.

The process for carrying out cruises, along with the protocols and related documents for [ocean-going](#) and [coastal cruises](#) can be accessed on the JSU FLEET website.

### 2.4 TRANSMISSION OF SUMMARIES

In the framework of the European SeaDataNet – pan-European Infrastructure for marine data (<http://www.seadatanet.org/>), these cruises summaries are sent to BSH/DOD (German data center) which ensures that the European CSRs are disseminated worldwide, particularly to [ICES/CIEM](#) (International Council for Exploration of the Sea).

## 3 Access to cruises and data

### 3.1 CRUISE MANAGEMENT SYSTEM (SGC)

The French oceanographic fleet decided to set up a Cruise management system called the SGC, which will structure the approaches of various stakeholders in the fleet over the life span of cruises via a general system. This system is accessible to all fleet stakeholders via a single interface and will ensure that all information from cruises will be centralized in a single data base, avoiding having to key them in several times.

Development of the system is now underway. The current version of the SGC already enables the completion of offshore cruise proposal files and the capture of CSRs (Cruise Summary Reports) at the end of the cruise. Ultimately, towards mid-March 2019, it will also make it possible to:

- Complete inshore cruise proposal files
- Complete cruise preparation files
- Supply and update all end-of-cruise documents
- Complete and update cruise highlight sheets

### 3.2 CRUISE DATABASE

The full inventory of *oceanographic surveys* in the French database and *their related data* contains information covering almost a century of measurements taken at sea.


It can be accessed at the following URL:

<http://campagnes.flotteoceanographique.fr/>

The screenshot displays the 'French Oceanographic Cruises' website. At the top, there is a navigation bar with 'EN', 'About', and 'My basket' links. Below the navigation bar is a search bar with the text 'Search everywhere' and 'Search cruise'. The main content area shows '8416 Result(s)' and a 'Order by date' dropdown menu. The results are organized into sections for 'YEAR' and 'SHIP'. The 'YEAR' section lists years from 2016 to 2009 with corresponding counts. The 'SHIP' section lists ship names with counts. Three cruise details are visible: 'MOOSE-GE 2016' (Responsible: COPPOLA Laurent), 'PELGAS 2016' (Responsible: DORAY Mathieu, DUHAMEL Erwan, HURET Martin, PETITGAS Pierre), and 'DYNAMOSEINE 2016' (Responsible: HUGUET Arnaud). Each detail includes a description of the cruise's objectives and dates.

This portal provides cartographic and interactive consultation and search functions for cruise data. It also enables data to be retrieved or ordered on line, using the check-out and form to be completed on the server, in compliance with the degree of confidentiality.





French research cruises and their data are incorporated in the SeaDataNet project's European catalogues (<http://www.seadatanet.org/>). Information about the cruises can be found at: [http://seadata.bsh.de/csr/retrieve/sdn2\\_index.html](http://seadata.bsh.de/csr/retrieve/sdn2_index.html), and their data is on the SeaDataNet [http://seadatanet.maris2.nl/v\\_cdi\\_v3/search.asp](http://seadatanet.maris2.nl/v_cdi_v3/search.asp) website.

The database which can be accessed from the international POGO server: <http://www.pogo-oceancruises.org/> gives the scheduled cruises of research vessels over 60 m LOA for a dozen countries. SISMER sends it the planned cruise schedules for its largest vessels. These plans are also included in the EU Eurofleets 2 project.

Along with the cruise inventory, data from various fields of ocean research are also archived. They include marine physics, chemistry, biology, geology and geophysics, as well as exploratory fisheries and technology.

In accordance with the rules in effect, SISMER archives and disseminates the data collected aboard French research vessels - primarily those of JSU FLEET - and observation systems.

The data are transmitted following one of the following patterns:

**Sent directly to SISMER at the end of the mission:**

- Raw data acquired using French facilities managed by IFREMER (major facilities),
- Single- and multi-beam bathymetric data,
- Gravimetry data,
- Magnetometry data
- Seismic reflection data,
- Sonar imaging data (sidescan sonars, multibeam echo sounders),
- Navigational data,
- Shipboard ADCP data from RV *L'Atalante*, *Thalassa*, *Le Suroît*, *Beautemps-Beaupré*, *Pourquoi Pas?*.
- Data from underwater vehicles,
- Fisheries data.

**Data requiring laboratory processing:**

These data are transmitted once measurements have been validated or samples analyzed:

- Marine biochemical and physical data collected at hydrological stations (CTD and bottle casts),
- Eulerian or Lagrangian time series (currentometry, temperature, deep sea tide gauges),
- Geological samples and analyses.

**Data transmitted in real time:**

When the ship is so equipped, data can be sent directly in real time for the needs of modeling experts in the framework of operational oceanographic projects:

- CTD and XBT data from some cruises,

The data archived at Simer are available on line at this address: <http://donnees-campagnes.flotteoceanographique.fr/>

**Data compilations:**

SISMER manages and disseminates an archive of data and data compilation products: theme-based databases, digital elevation models (DEM), maps and atlases which are created in partnership with other scientific centers and laboratories, in the framework of French, European and international programs.

The Sextant portal (marine and coastal geographical data infrastructures) provides a catalogue of baseline reference data related to the marine environment: <http://sextant.ifremer.fr/fr/>

## 4 cruises report

Each year, the cruise database is enriched with new data. Sometimes we also recover information about older cruises, particularly when a link to a bibliography or to data is requested.

### 4.1 BACKGROUND

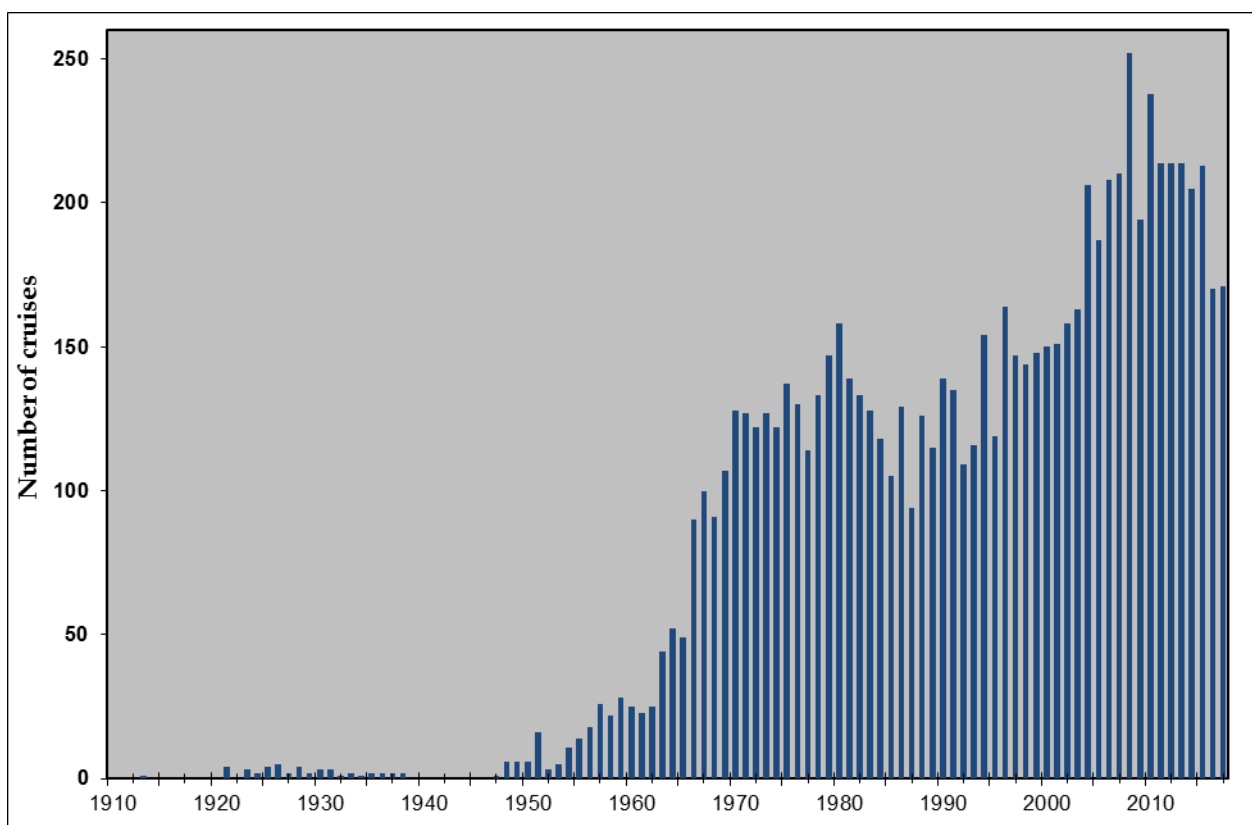
In all, SISMER has catalogued 8306 French oceanographic cruises (broadly speaking, without any confidentiality criteria) since 1913, including:

- ✓ 7004 cruises (strictly speaking),
- ✓ 795 simple or piggyback transits,
- ✓ 382 sea-trials or shake-down cruises,
- ✓ 57 service provisions,
- ✓ 68 other cruises.

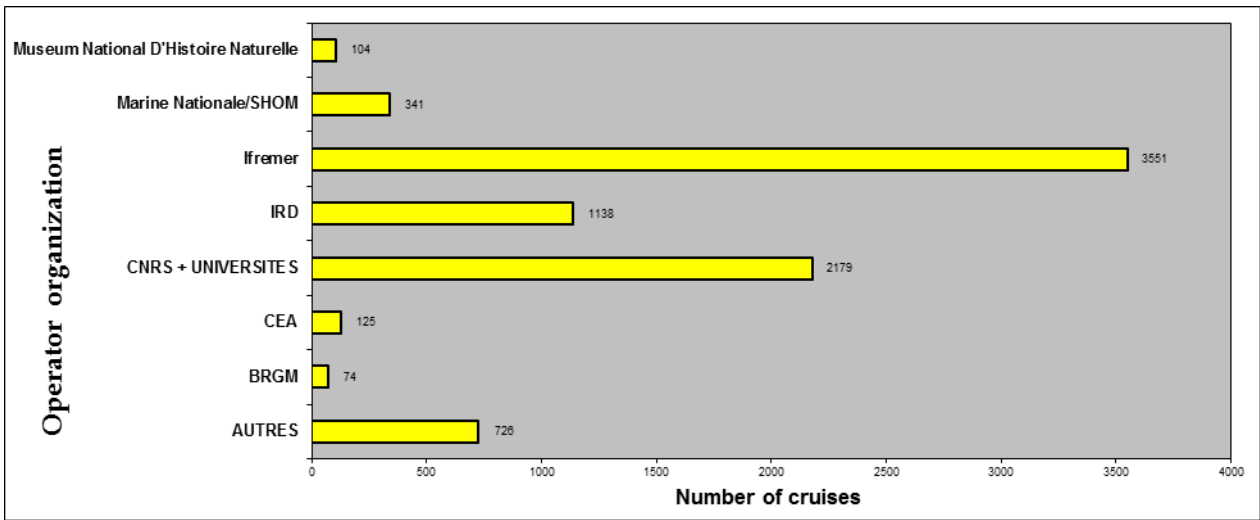
Only 8238 cruises (not including these "other cruises") are covered in this report's statistics.

In the past, cruises were generally conducted by the former Scientific and technical fisheries institute (ISTPM) and by the French Navy's hydrographic and oceanographic service (FRENCH NAVY/SHOM). Later, other organizations like the CNRS, IRD (formerly ORSTOM), IPEV (formerly IFRTP), the National museum of natural history (MNHN), CNEXO (National center for exploitation of the oceans) and then IFREMER (created by merging ISTPM-CNEXO) greatly contributed to the efforts to collect measurements at sea, using their own facilities. Currently, the growing number of European projects and international programs for ship time sharing mean that a number of French cruises are made aboard foreign vessels.

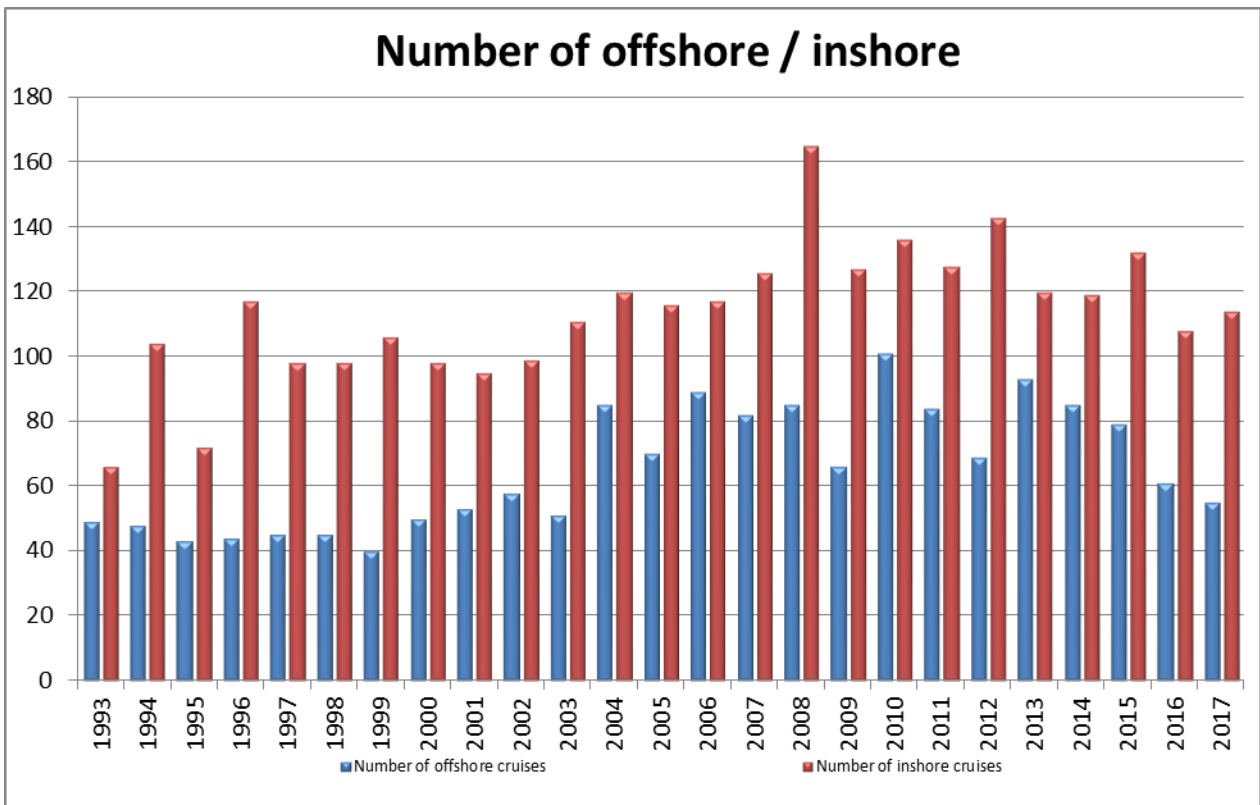
The 8238 French cruises (comprising the ocean research cruises, simple transit and piggyback missions, shakedown and sea trial cruises, as well as commercial service provision) can be broken down over time, since 1913 as follows:



The main client organizations (usually the organization which the chief scientist belongs to) for these cruises were:



The graph below shows trends for offshore (ship >= 50 m LOA) and inshore (ship <= 50 m LOA) cruises over the past 25 years.



The number of both ocean-going and inshore cruises grew significantly in the early 2000s, to reach the highest level around 2008-2010 (with over 160 offshore cruises in 2008 and a hundred inshore cruises in 2010). However, a drop in the number of these cruises has been noted over the past few years (just over 100 offshore cruises and 60 inshore cruises in 2016).

## 4.2 YEAR 2017

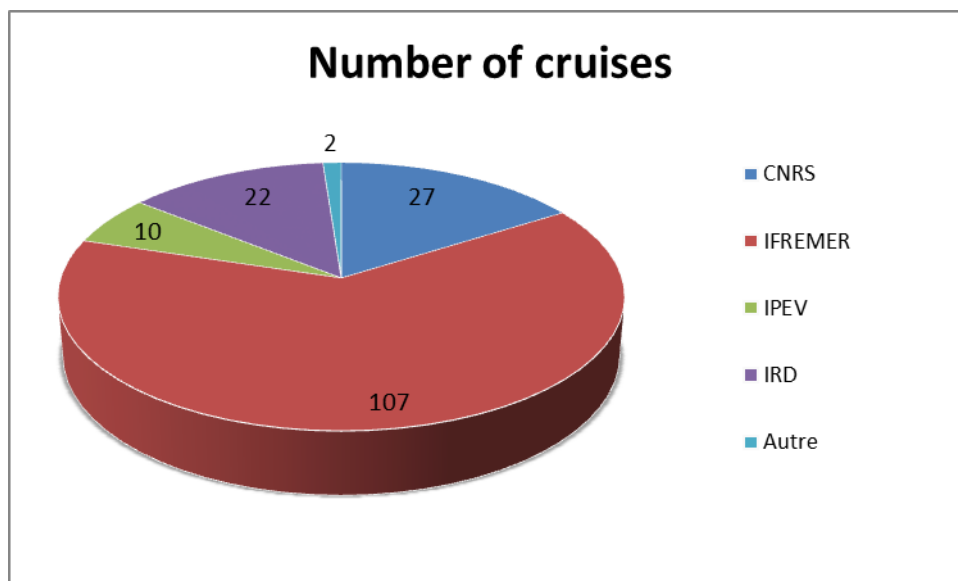
In 2017, 168 French cruises (oceanographic cruises, shakedown and trials, transits and commercial services – not classified as "Confidential") were recorded at SISMER aboard both offshore and inshore vessels.

This is not entirely representative of the French fleet, since there were also cruises conducted on station vessels, but these have not been referenced at SISMER for the moment. However, the schedules for these vessels can be accessed on line:

<http://www.flotteoceanographique.fr/Calendriers-des-campagnes/Calendriers-navires-de-station>

### 4.2.1 Breakdown of cruises by managing organization

The managing organization is the shipowner.



### 4.2.2 Breakdown of cruises by client organization

The client organization is the entity which has requested the cruise (generally represented by the 1st chief scientist).

Chief scientist's organization	Number of cruises
BRGM	1
CNRS+UNIVERSITIES	33
Ecole Normale Supérieure	1
Ensieta	1
IRD	6
Ifremer	116
Earth physics institute in Paris (IPGP)	3
Institute for Radioprotection and nuclear safety	2
FRENCH NAVY/SHOM	2
National museum of natural history	3
<b>TOTAL</b>	<b>168</b>

As regards the chief scientists, the same main organizations are present each year. Other organizations appear on a more occasional basis.

## 4.3 CRUISES BY VESSEL

This report presents the activity of vessels in the French fleet as comprehensively as possible.

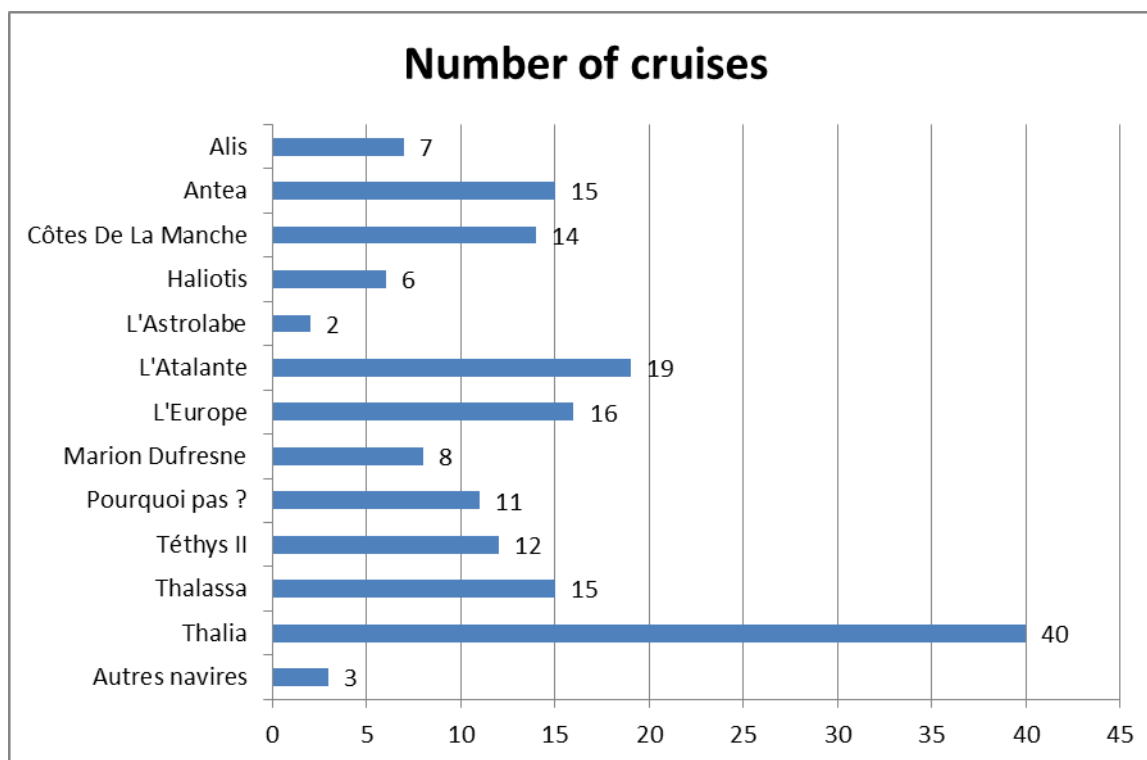
Some of the cruises have been referenced at SISMER, meaning that their chief scientist sent us their data at the end of the cruise by filling out the CSR sheet.

Training or teaching cruises are not referenced at SISMER.

Steps are being taken to try and obtain the same outcome for station boats, but some time is still needed to achieve this.

### 4.3.1 Cruises referenced at SISMER

The 168 cruises in 2017 referenced at SISMER were carried out aboard 5 ocean-going research vessels, 7 inshore research vessels and two underwater vehicles (*NAUTILE* and *ROV VICTOR 6000*) belonging to the French oceanographic fleet, as well as 2 vessels not in the fleet. The [WEBSITE](http://www.flotteoceanographique.fr/La-flotte/Navires) of the JSU <http://www.flotteoceanographique.fr/La-flotte/Navires> describes the make up of its fleet in detail.



Since 2016, a significant drop has been observed in the number of cruises referenced at SISMER (40 fewer cruises). This drop is largely due to the decommissioning of the *Le Suroit* vessel and a breakdown of *RV Beautemps-Beaupré* in 2016. However, there was also a noticeable decrease in the use of some vessels (*Alis*, *L'Atalante*) in 2017 compared to the previous year. Contrary to this, *RVs Antea* and *Thalia* were used more.

The 2017 cruises are presented below, listed by vessel and indicating spatial location and time period. A full list of cruises in alphabetical order and for all vessels is also provided at the end of the document.

#### 4.3.1.1 Cruises by RV L'Alis

RV Alis is a 28.50 m trawler operating in the South-West Pacific Ocean from French Polynesia to Papua-New Guinea. The vessel is based in New Caledonia. It is operated by IRD.

It performs oceanographic missions for physics (umbilical cable, shipboard ADCP, etc.), biology (trawling, ER 60 4 frequency echo-sounder, scanmar sensors, etc.) and bathymetrics (EM1002 multibeam echo-sounder). It is also used as a support ship for diving missions (studying biodiversity, etc.).

Here are its main characteristics:



**Coastal vessel**  
**NODC code: 35AY**  
**Call sign: FHQB**  
**Length 28m**  
**Crew: 12**  
**Scientists and technicians: 6**

For more details: <http://www.flotteoceanographique.fr/La-flotte/Navires/Navires-hauturiers/Alis>

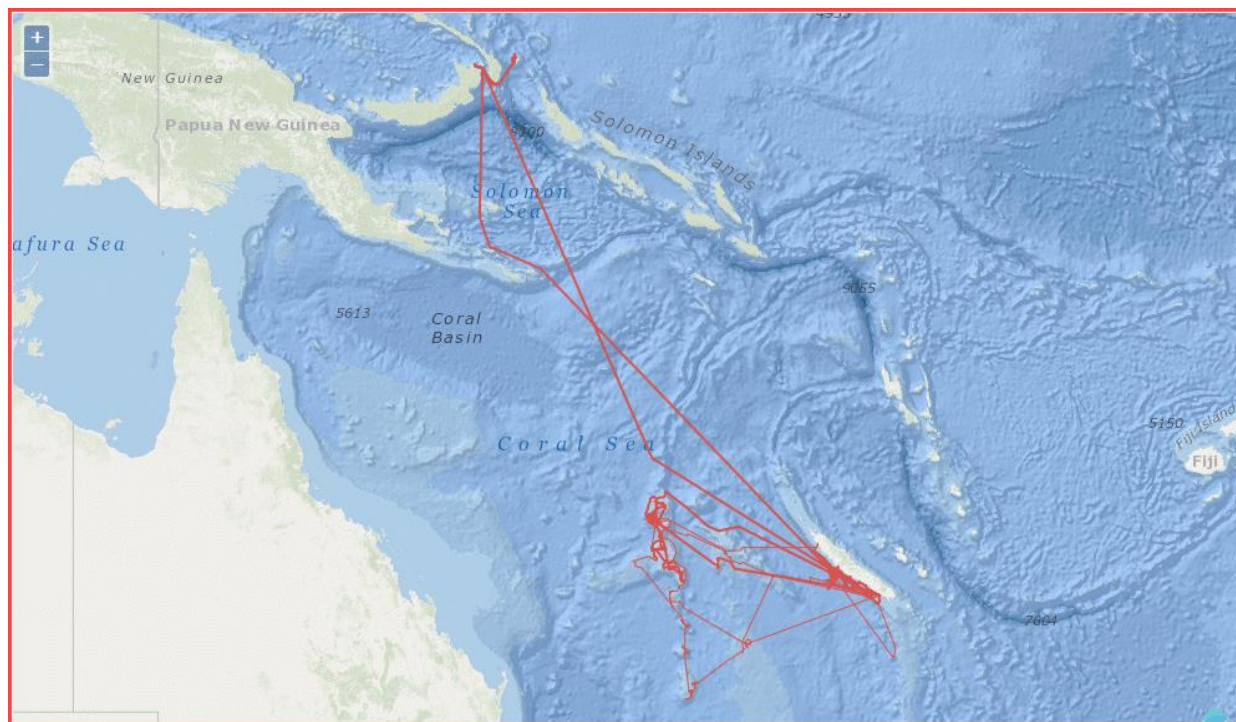


Figure 1 — Tracks of 7 cruises and legs in transit by L'Alis in 2017

**PUFFALIS**

MENKES Christophe, ALLAIN Valérie  
18/03/2017 - 02/04/2017

**SUPERNATURAL**

RODOLFO METALPA Riccardo  
05/04/2017 - 16/04/2017

**TR\_NMARAB**

02/05/2017 - 13/05/2017

**CARIOCA 2**

RODOLFO METALPA Riccardo  
13/05/2017 - 25/05/2017

**TR\_RABNMA**

26/05/2017 - 04/06/2017

**MARACAS 3**

GARRIGUE Claire  
07/08/2017 - 27/08/2017

**KANADEEP**

SAMADI Sarah, HOURDEZ Stephane  
30/08/2017 - 27/09/2017

#### 4.3.1.2 Cruises by RV L'Antéa

RV Antea is a 35 m-long catamaran operating in the Atlantic and Indian Oceans. The vessel is based in France. It is operated by IRD.

It performs oceanographic missions for physics (umbilical cable, shipboard ADCP, etc.) and biology (trawling, ER 60 4-frequency echosounder, scanmar sensors, etc.). It is also used as a support ship for diving missions (studying biodiversity, etc.).



Here are its main characteristics:

**Coastal vessel**  
**NODC code: 35A8**  
**Call sign: FNUR**  
**Length 35m**  
**Crew: 12**  
**Scientists and technicians: 10**

For more details: <http://www.flotteoceanographique.fr/La-flotte/Navires/Navires-hauturiers/Antea>



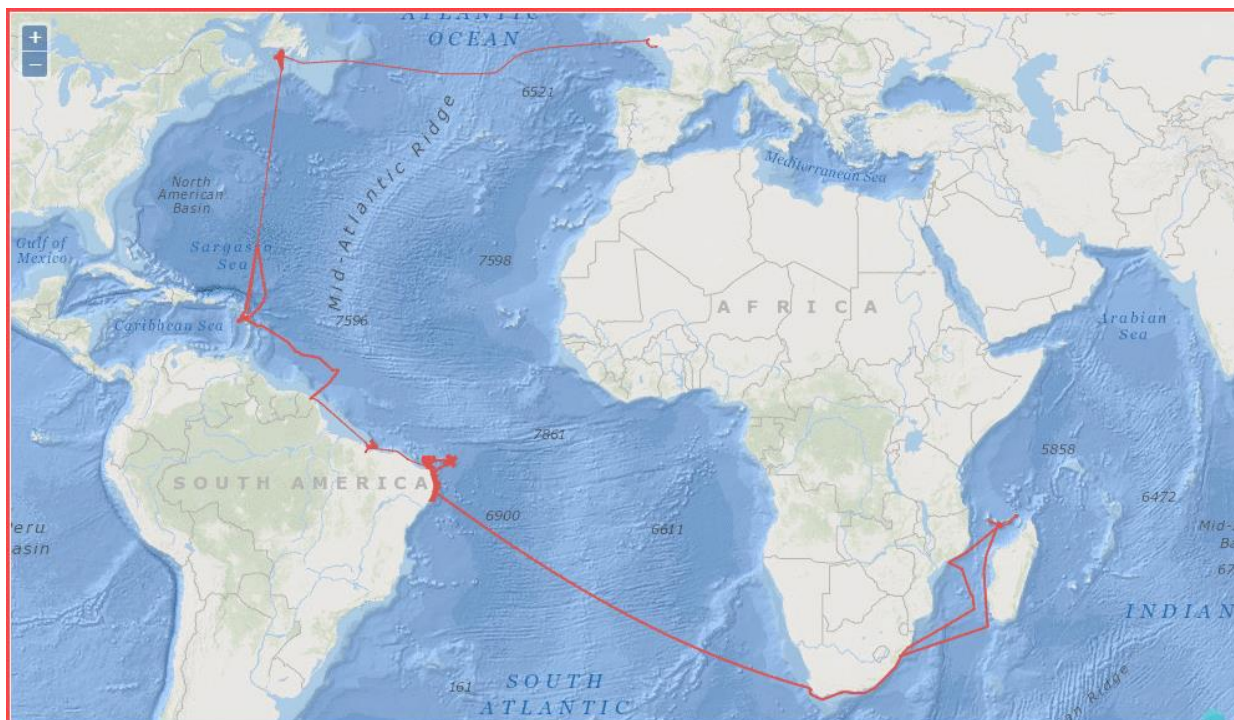


Figure 2 — Tracks of 15 cruises and legs in transit of *Antea* in 2017

**PAMELA-MOZ08**

KHRIPOUNOFF Alexis  
05/01/2017 - 19/01/2017

**BIOMAGLO**

CORBARI Laure, SAMADI Sarah, OLU Karine  
21/01/2017 - 10/02/2017

**TR\_LONDUR**

11/02/2017 - 21/02/2017

**TR\_DURCAP**

13/03/2017 - 20/03/2017

**TR\_CAPRCF**

21/03/2017 - 04/04/2017

**ABRACOS 2**

BERTRAND Arnaud  
08/04/2017 - 09/05/2017

**TR\_RCFCAY**

12/05/2017 - 15/05/2017

**TR\_CAYSAO**

22/05/2017 - 26/05/2017

**SHEOPS**

RABINEAU Marina  
26/05/2017 - 11/06/2017

**TR\_SAOCAY**

11/06/2017 - 14/06/2017

**SARGASSES CARAIBES**

THIBAUT Thierry  
19/06/2017 - 13/07/2017

**TR\_PAPSPM**

13/07/2017 - 27/07/2017

**SPM2017**

LAZURE Pascal, FOUCHER Eric  
10/08/2017 - 15/09/2017

**TR\_SPMBRE**

16/09/2017 - 28/09/2017

**TR\_BRELOR**

28/09/2017 - 30/09/2017

#### 4.3.1.3 Cruises by RV Côtes de la Manche

This oceanographic vessel performs scientific research missions, mainly in the Atlantic English Channel area. It can conduct missions lasting about ten days, at distances reaching 200 nautical miles from harbour. This inshore vessel is fitted with instruments and meets the needs of researchers in the fields of marine geosciences, physical and biological oceanography, biogeochemistry and ocean chemistry. It also contributes to long-term marine environmental observation missions and to research and trials missions in various marine technology fields. The vessel can also carry out teaching missions for graduate and post-graduate university levels

Here are its main characteristics:



**Coastal vessel**  
**NODC code: 35C4**  
**Call sign: FQBE**  
**Length 25m**  
**Crew: 7**  
**Scientists and technicians: 8**

For more details: <http://www.flotteoceanographique.fr/La-flotte/Navires/Navires-cotiers/Cotes-de-la-Manche>

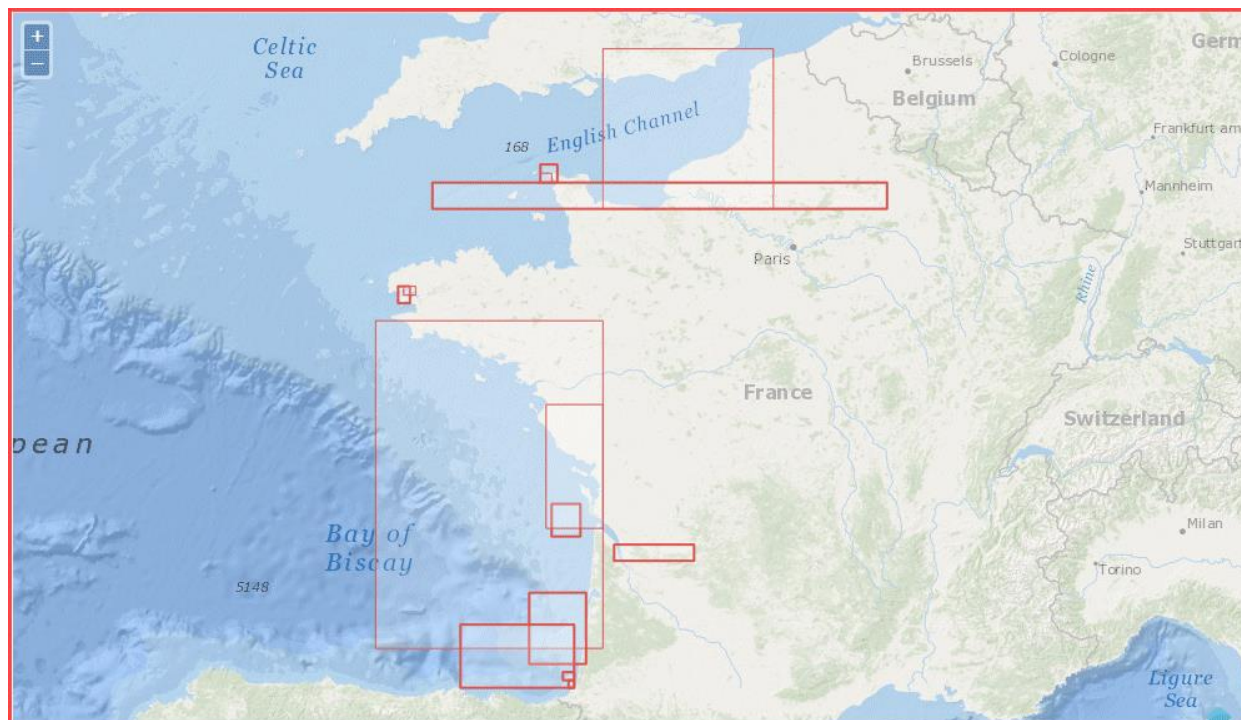


Figure 3 — Tracks of 14 cruises by *Côtes de la Manche* in 2017

**SOGIR 17**

DERRIENNIC Hervé  
29/01/2017 - 29/11/2017

**PHRESQUES 2017**

VERNEY Romaric, JACQUET Matthias,  
LE BERRE David  
05/02/2017 - 11/10/2017

**NANO**

COLAS Florent  
24/02/2017 - 01/03/2017

**METEOR 2017**

GRASSO Florent  
08/03/2017 - 04/12/2017

**ARMORIC KULLENBERG**

MACE Eric  
15/03/2017 - 16/03/2017

**REIVE**

LOOTS Christophe  
23/03/2017 - 12/05/2017

**ATLANTHROV**

RAUGEL Ewen  
26/05/2017 - 09/06/2017

**ETOILE**

LAZURE Pascal, PUILLAT Ingrid  
08/07/2017 - 06/08/2017

**HAPOGE**

GILLET Hervé, DE CASAMAJOR Marie-  
Noelle  
13/07/2017 - 19/07/2017

**GAZCOGNE3**

THEREAU Estelle, DUPRE Stéphanie  
08/08/2017 - 10/08/2017

**JERICOBENT-2**

DEFLANDRE Bruno  
14/08/2017 - 26/08/2017

**HYD2M 2017 LEG3**

BAILLY DU BOIS Pascal  
18/09/2017 - 21/09/2017

**HYD2M 2017 LEG4**

BAILLY DU BOIS Pascal  
13/10/2017 - 16/10/2017

**ORHAGO 17**

COUPEAU Yann  
02/11/2017 - 24/11/2017

#### 4.3.1.4 Cruises by RV Haliotis

The oceanographic launch Haliotis provides a mapping platform, based first and foremost on acoustic imaging which makes it possible to obtain accurate and reliable information about the nature and the morphology of this very shallow coastal fringe. GENAVIR is in charge of its management.



Here are its main characteristics:

**Coastal vessel**  
**NODC code: 35HL**  
**Call sign: FGF5958**  
**Length 10m**  
**Crew: 2**  
**Scientists and technicians: 1**

For more details: <http://www.flotteoceanographique.fr/La-flotte/Navires/Navires-cotiers/Haliotis>

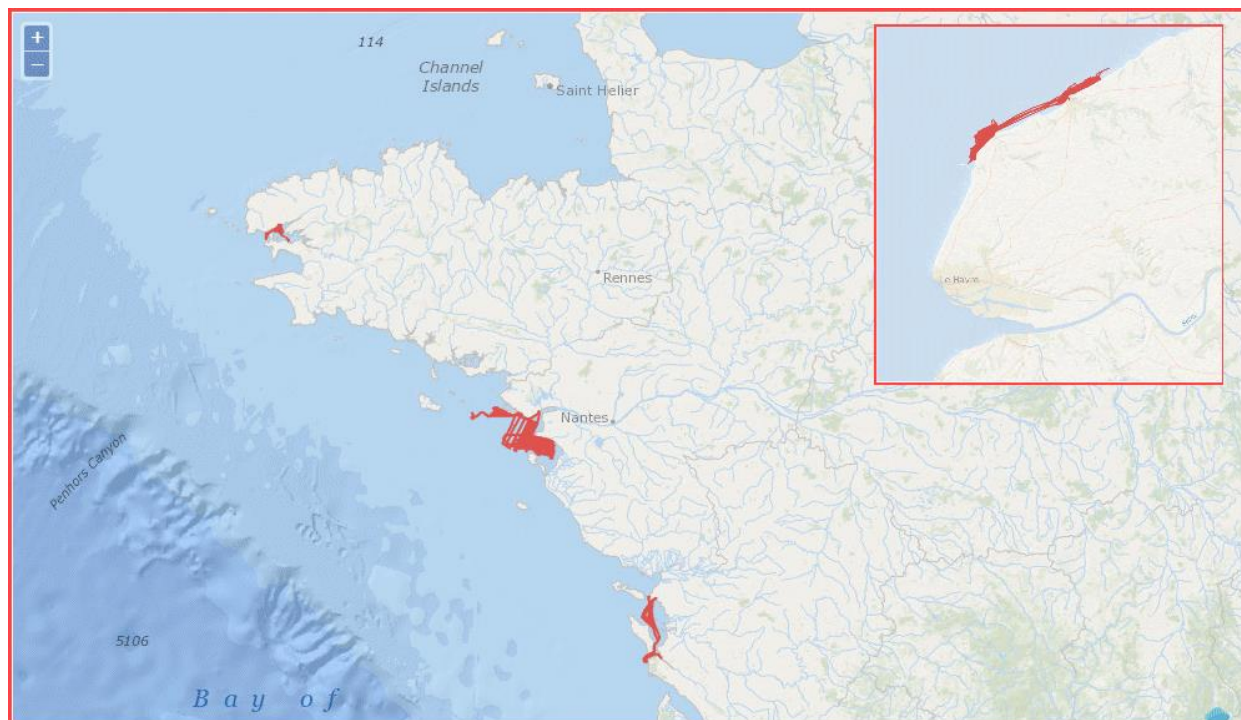


Figure 4 — Tracks of 6 cruises by *Haliotis* in 2017

**ESSTECH17-GEN-HA**

BISQUAY Hervé  
18/04/2017 - 21/04/2017

**HOOPLA 2017**

BALTZER Agnès  
09/05/2017 - 17/05/2017

**EMEMO 2017**

CHAUMILLON Eric  
20/05/2017 - 31/05/2017

**CROCO-CAUX**

DUPERRET Anne  
04/06/2017 - 13/06/2017

**RETZ2**

KAUB Caroline, LE ROY Pascal,  
GEOFFROY Laurent  
17/06/2017 - 19/07/2017

**BATHYRADE**

GUERIN Charline  
22/07/2017 - 22/07/2017

#### 4.3.1.5 Cruises by RV L'Astrolabe

L'Astrolabe is a 65 m-long "ice strengthened" supply ship serving the Dumont d'Urville base in Adélie Land. It can embark 49 passengers and several hundreds of tons of food supplies, fuel and equipment. Each year, it is used by IPEV for 120 days, regularly ensuring 5 return trips (November to March) over a distance of 2,700 km between Tasmania and the Antarctic continent.

L'Astrolabe is also used for coastal oceanographic surveys of short duration in the Antarctic.



Here are its main characteristics:

**Ocean-going vessel**  
**NODC code: 35AC**  
**Call sign: FHZI**  
**Length 65m**  
**Crew: 12**  
**Scientists and technicians: 48**

**Co-owned by TAAF / IPEV - Managed by IPEV**

For more details: <http://www.institut-polaire.fr/ipev/infrastructures/les-navires/lastrolabe/>

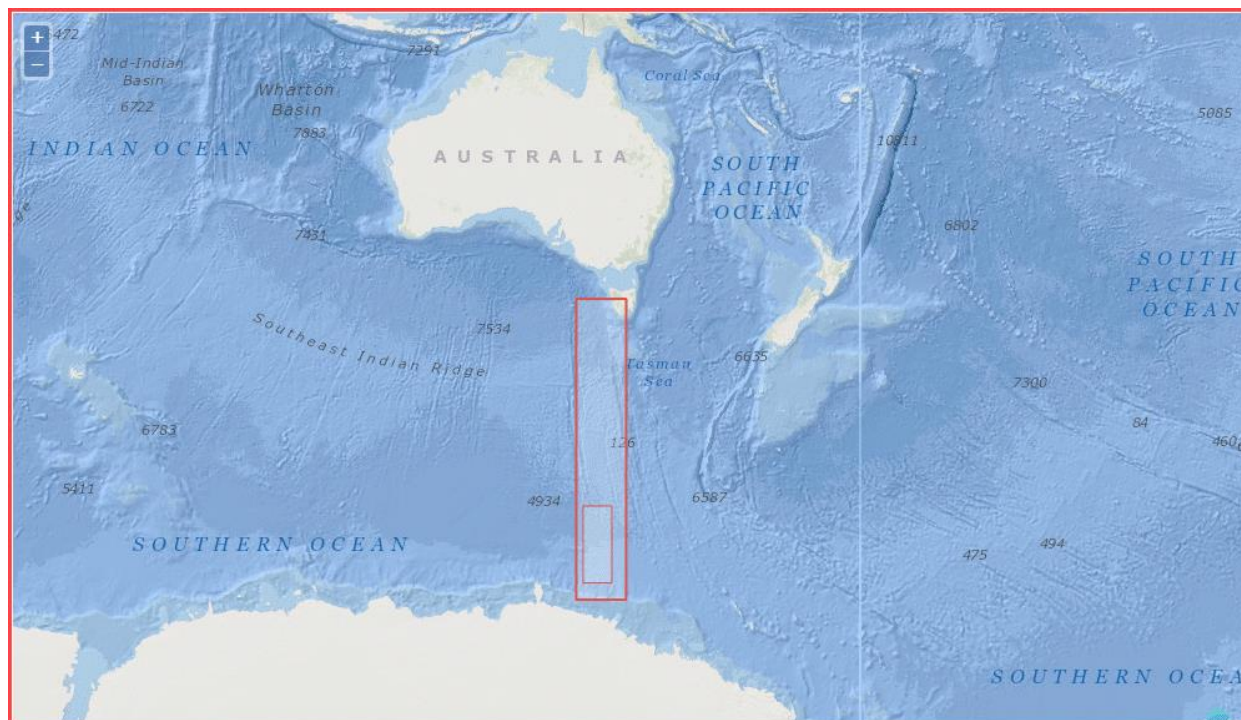


Figure 5 — Tracks of 2 cruises by *L'Astrolabe* in 2017

**SOHN AREA**  
 SAMARAN Flore  
 20/02/2017 - 06/03/2017

**MINERVE 2017**  
 FALCO Cédric, TOURATIER Franck, GOYET Catherine  
 23/02/2017 - 07/03/2017

#### 4.3.1.6 Cruises by RV *L'Atalante*

The multidisciplinary research vessel *L'Atalante* is designed for work in marine geosciences, physical oceanography and marine biology.



Here are its main characteristics:

**Ocean-going vessel**  
**NODC code: 35A3**  
**Call sign: FNCM**  
**Length 85m**  
**Crew: 17/30**  
**Scientists and technicians: 30**

For more details: <http://www.flotteoceanographique.fr/La-flotte/Navires/Navires-hauturiers/L-Atalante>



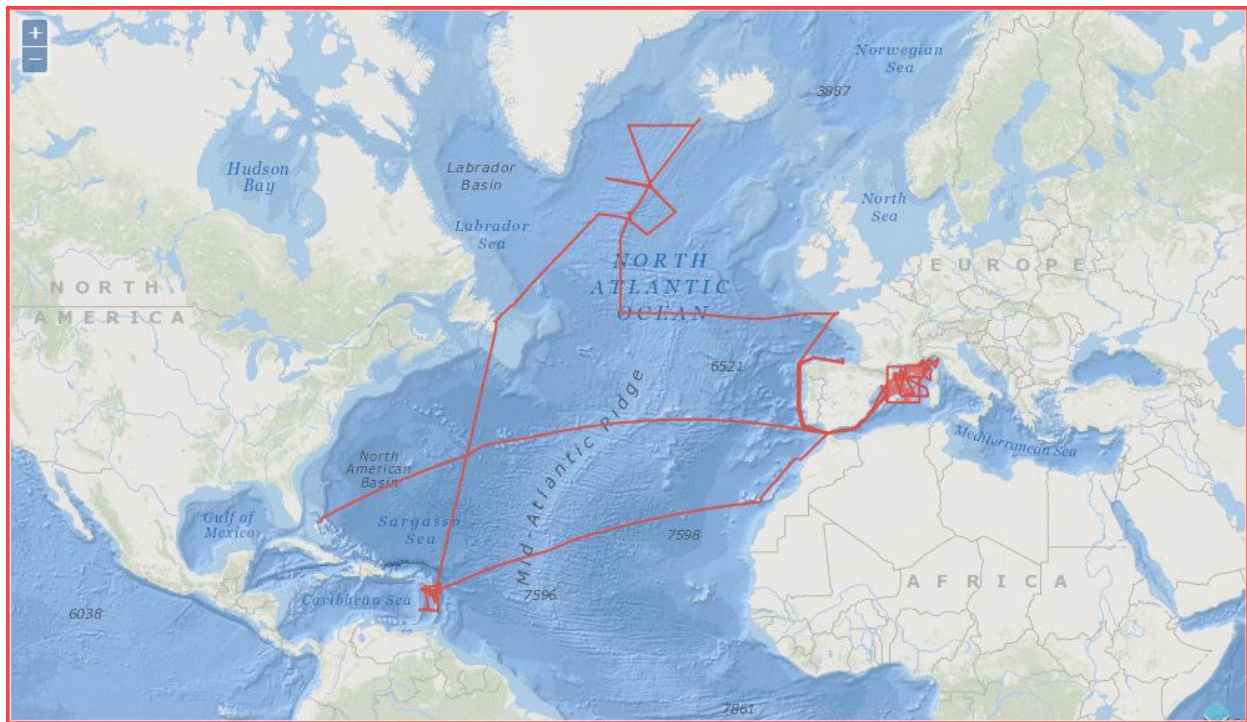


Figure 6 — Tracks of 19 cruises and legs in transit by *L'Atalante* in 2017

**TR\_NASSEY**

05/01/2017 - 24/01/2017

**PROTEVSMED\_2017\_LEG1**

IETA MOUTON

27/01/2017 - 07/02/2017

**PROTEVSMED\_2017\_LEG2**

IETA MOUTON

11/02/2017 - 23/02/2017

**ESS\_DEC**

LOSSOUARN Hubert

26/02/2017 - 03/03/2017

**ESS\_PENF50\_2017**

DUSSUD Loïc

26/02/2017 - 03/03/2017

**ESS\_SYS**

PLACAUD Xavier

05/03/2017 - 07/03/2017

**ESSROV17**

PLACAUD Xavier

09/03/2017 - 12/03/2017

**ESS\_GRAVI**

LOSSOUARN Hubert

12/03/2017 - 14/03/2017

**TR\_SEYPAP**

13/03/2017 - 31/03/2017

**SUBSAINTES**

ESCARTIN Javier, LE FRIANT Anne,

FEUILLET Nathalie

02/04/2017 - 24/04/2017

**ESS\_SISM**

TOUS Jean-Yves

02/05/2017 - 05/05/2017

**GARANTI**

LEBRUN Jean Frédéric, LALLEMAND

Serge E.

06/05/2017 - 25/06/2017

**TR\_PAPDF**

24/06/2017 - 26/06/2017

**TR\_FDFJOH**

04/07/2017 - 12/07/2017

**RREX 2017**

THIERRY Virginie

14/07/2017 - 18/08/2017

**TR\_BRESEY**

21/08/2017 - 27/08/2017

**MOOSE-GE 2017**

TESTOR Pierre

30/08/2017 - 24/09/2017

**TR\_SEYSAN**

24/09/2017 - 03/10/2017

**TR\_SANSEY**

10/11/2017 - 16/11/2017

#### 4.3.1.7 Cruises by RV L'Europe

This oceanographic research vessel is a 29.60 m-long catamaran operating in the Mediterranean Sea. The outcome of cooperation between IFREMER and ICRAM (the Italian Central institute for applied marine research), it was built in 1993 at Sables d'Olonnes (OCEA).

It is designed to perform a range of missions, in particular related to fisheries research and the coastal environment. It is used for conventional deep-sea trawling (reaching 1,300 meters), pelagic and experimental trawling, deploying set gear (gill nets, longlines, pots, etc.), seismic and sedimentology studies and hydrological sampling.



Here are its main characteristics:

**Coastal vessel**  
**NODC code: 35EU**  
**Call sign: FKJB**  
**Length 30m**  
**Crew: 8**  
**Scientists and technicians: 8**

For more details: <http://www.flotteoceanographique.fr/La-flotte/Navires/Navires-cotiers/L-Europe>

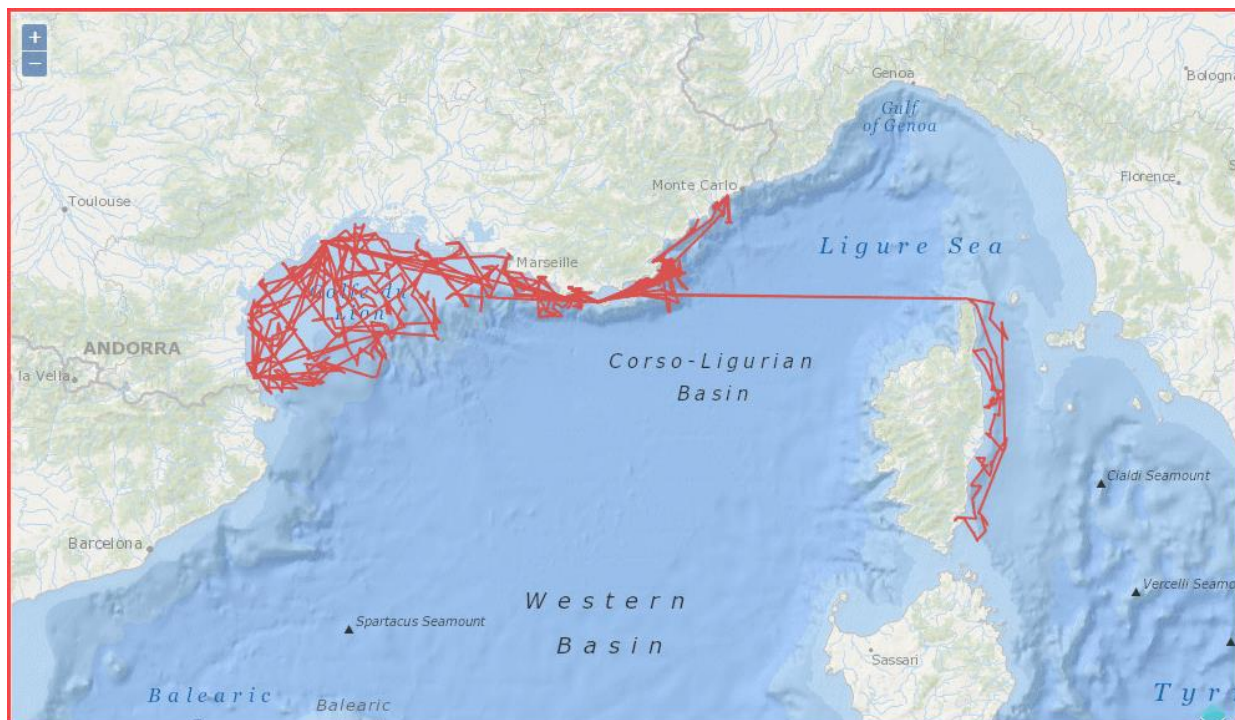


Figure 7 — Tracks of 16 cruises by *L'Europe* in 2017

**ESSTECH17-GEN-EU**

BISQUAY Hervé  
31/03/2017 - 04/04/2017

**ESSTECH17-HROV**

RAUGEL Ewen  
05/04/2017 - 12/04/2017

**ESS\_GEN\_AUV\_IDFX**

PLACAUD Xavier  
13/04/2017 - 15/04/2017

**ESSAUV17-EU**

JAUSSAUD Patrick  
16/04/2017 - 26/04/2017

**VIDEOCOR1**

FABRI Marie-Claire  
27/04/2017 - 10/05/2017

**DIVACOU 2017 (10)**

BOUHIER Marie-Edith  
11/05/2017 - 17/05/2017

**ESS\_LOPS17-01**

HAMON Michel  
18/05/2017 - 22/05/2017

**MEDITS 2017**

JADAUD Angélique, METRAL Luisa  
27/05/2017 - 30/06/2017

**PELMED 2017**

BOURDEIX Jean-Hervé  
01/07/2017 - 03/08/2017

**SEEK LEAK**

RINNERT Emmanuel, SCALABRIN  
Carla  
04/09/2017 - 15/09/2017

**SOLVEIG V**

SILVA JACINTO Ricardo  
16/09/2017 - 20/09/2017

**ESSTECH\_HROV\_GEN\_17**

BAUSSAN Clément  
21/09/2017 - 28/09/2017

**VIDEOCOR1-02**

FABRI Marie-Claire  
28/09/2017 - 02/10/2017

**ESSTECH-EU-BRUIT**

LE GALL Yves  
03/10/2017 - 06/10/2017

**ESS\_LOPS17-02**

HAMON Michel  
30/10/2017 - 02/11/2017

**CARTOHROV-GEN**

RAUGEL Ewen, JAUSSAUD Patrick,  
BAUSSAN Clément  
03/11/2017 - 24/11/2017

#### 4.3.1.8 Cruises by RV Marion Dufresne

RV Marion Dufresne is a multi-purpose research vessel launched in 1995, commissioned by CMA-CGM, and jointly chartered by TAAF and IPEV. It provides two main functions:

- **oceanographic research:** on every ice-free ocean, under the responsibility of IPEV - 217 days a year.
- **logistics for French sub-Antarctic islands:** Crozet, Kerguelen, Amsterdam/Saint-Paul, under the responsibility of TAAF – 120 days per year (4 x 30 days).



Here are its main characteristics:

**Ocean-going vessel**  
**NODC code: 35MF**  
**Call sign: FNIN**  
**Length 120.50m**  
**Crew: 18/29**  
**Scientists and technicians: 60/110**

**Owned by TAAF - Managed by IPEV**

For more details:

<http://www.flotteoceanographique.fr/La-flotte/Navires/Navires-hauturiers/Marion-Dufresne>

<http://www.institut-polaire.fr/ipev/infrastructures/les-navires/le-marion-dufresne/>

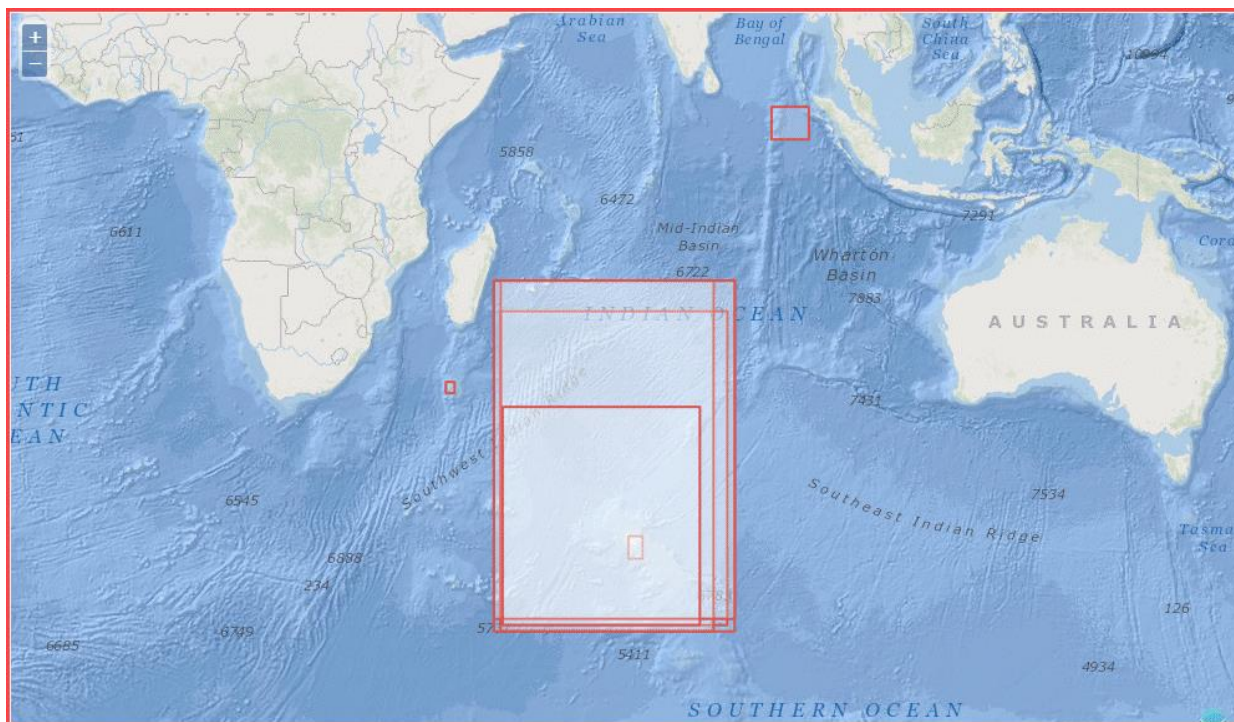


Figure 8 — Tracks of 8 cruises and piggybacking in transit by *Marion Dufresne* in 2017

**MD 206 / OBSAUSTRAL**

METZL Nicolas, LO MONACO Claire,  
TOULLEC Jean-Yves, KOUBBI  
Philippe, ROYER Jean-Yves, COTTE  
Cédric  
04/01/2017 - 10/02/2017

**VT 152 / OHA-SIS-BIO-9**

ROYER Jean-Yves  
04/01/2017 - 10/02/2017

**VT 153 / OISO-27**

METZL Nicolas, LO MONACO Claire  
04/01/2017 - 10/02/2017

**VT 154 / THEMISTO**

COTTE Cédric  
04/01/2017 - 10/02/2017

**VT 155 / REPCCOAI**

TOULLEC Jean-Yves, KOUBBI Philippe  
04/01/2017 - 10/02/2017

**VT 156 / SOCLIM RECUP**

BLAIN Stéphane  
22/03/2017 - 21/04/2017

**MD 208 / WALTERS SHOAL**

BOUCHET Philippe, TERNON Jean-  
François, CORBARI Laure  
24/04/2017 - 18/05/2017

**MD 210 / MIRAGE 2**

SINGH Satish, HANANTO Nugroho  
Dwi  
28/09/2017 - 21/10/2017

#### 4.3.1.9 Cruises by RV Pourquoi pas?

This multidisciplinary vessel is designed for the following missions:

- Offshore and inshore hydrography with deployment of hydrographic survey launches
- Exploring the water column, currents
- Underwater mapping using its sounders and sub-seabed characterization (seismics, gravimetry, magnetism)
- Multi-scale study of physical, biological or geological processes
- Surveying of sites using acoustic equipment, deployment of towed (SAR), remotely operated (Victor 6000) or autonomous (Nautile) vehicles, positioning heavy equipment near the seabed using cable (Penfeld)
- Collecting and analyzing samples of water, living matter, sediments or rocks (coring, dredge)
- Deploying the Navy's Newtsuit assistance system to rescue submarines in difficulty



Here are its main characteristics:

**Ocean-going vessel**  
**NODC code: 35PP**  
**Call sign: FMCY**  
**Length 108m**  
**Crew: 35**  
**Scientists and technicians: 40**

For more details: <http://www.flotteoceanographique.fr/La-flotte/Navires/Navires-hauturiers/Pourquoi-pas>

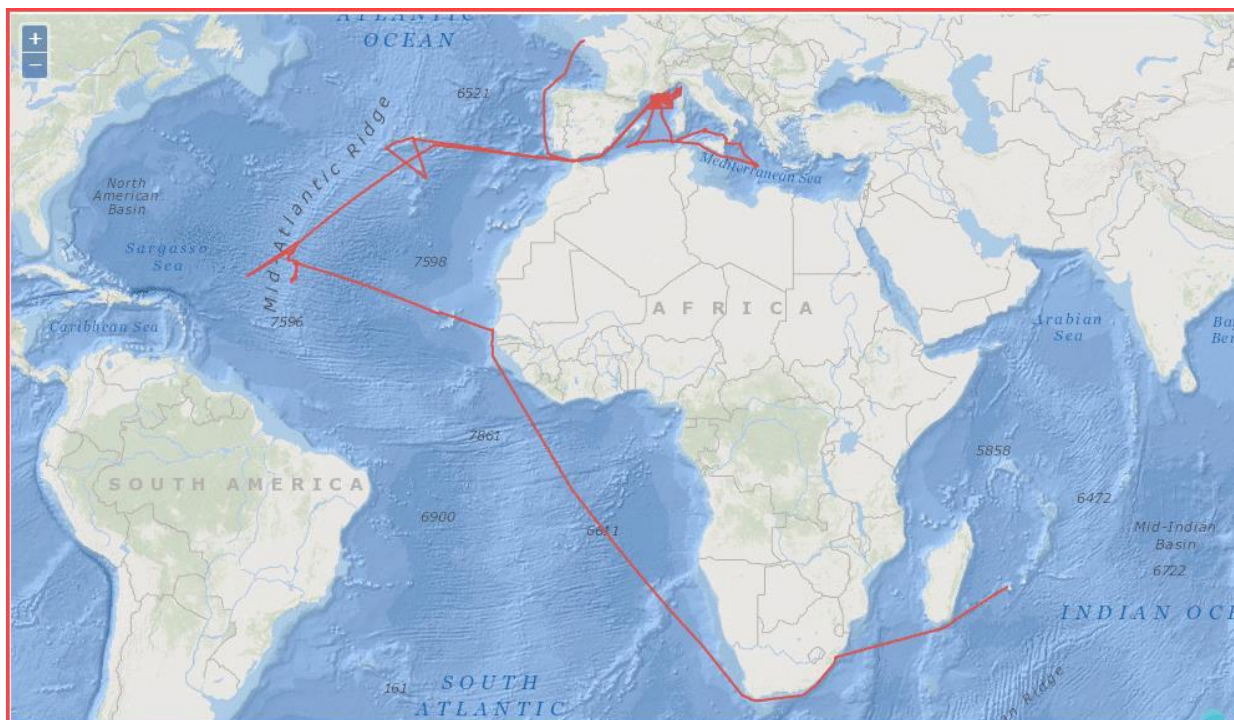


Figure 9 — Tracks of 11 cruises and legs in transit by *Pourquoi pas?* in 2017

**TR\_LPODUR**

09/01/2017 - 14/01/2017

**TR\_DURMIN**

20/02/2017 - 16/03/2017

**HERMINE**

FOUQUET Yves, PELLETER Ewan

16/03/2017 - 27/04/2017

**TR\_PDASEY**

29/04/2017 - 07/05/2017

**PEACETIME**

GUIEU Cécile, DESBOEUFs Karine

10/05/2017 - 11/06/2017

**ALPARRAY LEG1**

CRAWFORD Wayne

14/06/2017 - 26/06/2017

**TR\_SEYLHA**

29/06/2017 - 07/07/2017

**MOMARSAT2017**

SARRADIN Pierre-Marie, CANNAT

Mathilde

08/07/2017 - 28/07/2017

**BIOBAZ 2017**

LALLIER François

26/07/2017 - 27/07/2017

**TR\_BRESEY**

20/11/2017 - 28/11/2017

**ESSNAUT 2017**

CAMBON-BONAVITA Marie-Anne

02/12/2017 - 11/12/2017

#### 4.3.1.10 Cruises by RV *Téthys II*

This oceanographic vessel performs scientific research missions, mainly in the Mediterranean Sea. It can conduct missions lasting about ten days, at distances reaching 200 nautical miles from harbour. This inshore vessel is fitted with instruments and meets the needs of researchers in the fields of marine geosciences, physical and biological oceanography, biogeochemistry and ocean chemistry. It also contributes to long-term marine environmental observation missions and to research and trials missions in various marine technology fields. The vessel can also carry out teaching missions for graduate and post-graduate university levels



Here are its main characteristics:

**Coastal vessel**  
**NODC code: 35TT**  
**Call sign: FGTO**  
**Length 24m**  
**Crew: 7**  
**Scientists and technicians: 8**

For more details: <http://www.flotteoceanographique.fr/La-flotte/Navires/Navires-cotiers/Tethys-II>



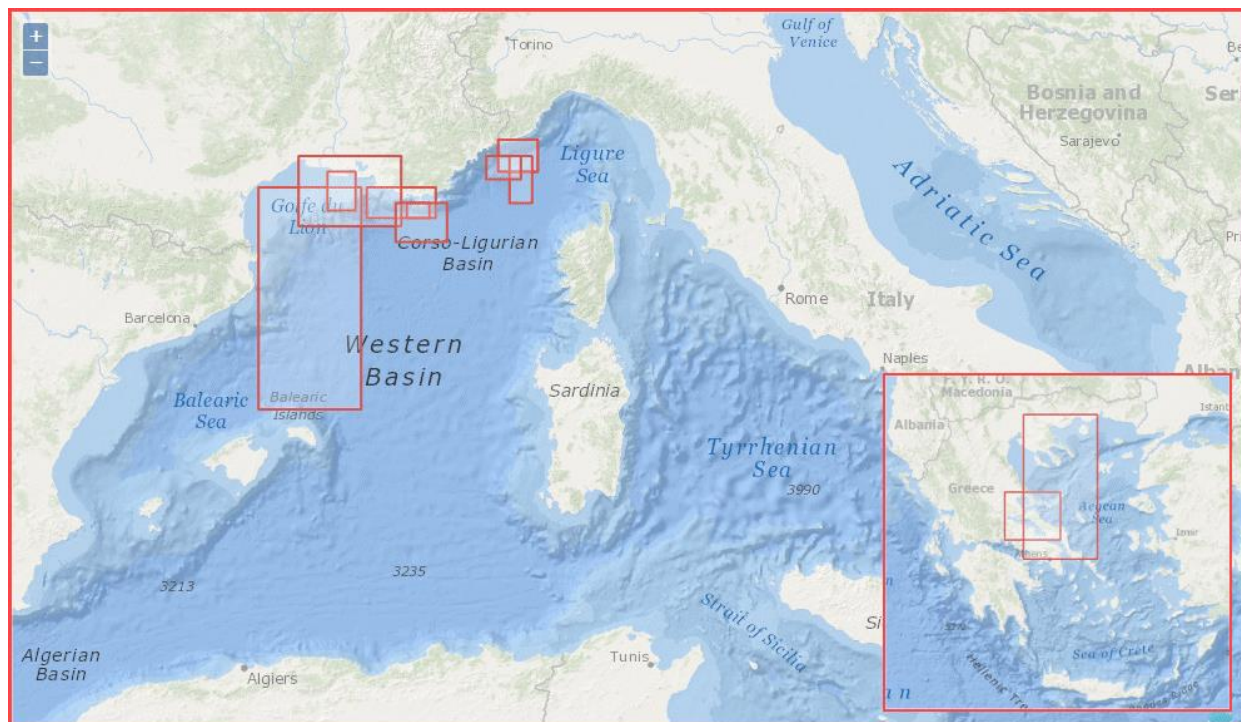


Figure 10 — Tracks of 12 cruises by *Téthys II* in 2017

**BOUSSOLE 2017**

GOLBOL Melek, VELLUCCI Vincenzo,  
ANTOINE David  
16/01/2017 - 07/12/2017

**MOOSE (ANTARES) 2017**

LEFEVRE Dominique  
20/01/2017 - 08/12/2017

**MOOSE (DYFAMED) 2017**

DIAMOND-RIQUIER Emilie, COPPOLA  
Laurent  
21/01/2017 - 04/12/2017

**MATUGLI 2017 LEG1**

LE BERRE David, BOURRIN François  
25/01/2017 - 01/02/2017

**MATUGLI 2017 LEG2**

LE BERRE David, BOURRIN François  
24/02/2017 - 03/03/2017

**ALPARRAY LIGURE LEG1**

DESSA Jean-Xavier  
25/04/2017 - 26/04/2017

**BILLION 42**

KUNESCH Stéphane  
17/06/2017 - 24/06/2017

**NAFAS**

RODRIGUEZ Mathieu  
11/07/2017 - 23/07/2017

**WATER**

CHANIER Frank, GAULLIER Virginie  
25/07/2017 - 04/08/2017

**UPCAST**

PAIRAUD Ivane  
17/08/2017 - 20/08/2017

**EMSO LIGURE 2017**

LEFEVRE Dominique, GOJAK Carl  
21/11/2017 - 21/11/2017

**ALPARRAY LIGURE LEG2**

DESSA Jean-Xavier  
27/11/2017 - 28/11/2017

#### 4.3.1.11 Cruises by RV Thalassa

This fisheries research vessel is designed for the following missions:

- Population ecology
- Exploited species assessments
- Studying the spatial-temporal distribution of resources
- Catch and seafood processing techniques
- Physical oceanography
- Occasional deployment of remote operated vehicle Victor 6000

This vessel is the outcome of cooperation between IFREMER and IEO (Spanish oceanographic institute).



Here are its main characteristics:

**Ocean-going vessel**  
**NODC code: 35HT**  
**Call sign: FNFP**  
**Length 74m**  
**Crew: 16/25**  
**Scientists and technicians: 25**  
**Co-owned by IEO (SPAIN) – IFREMER**

For more details: <http://www.flotteoceanographique.fr/La-flotte/Navires/Navires-hauturiers/Thalassa>

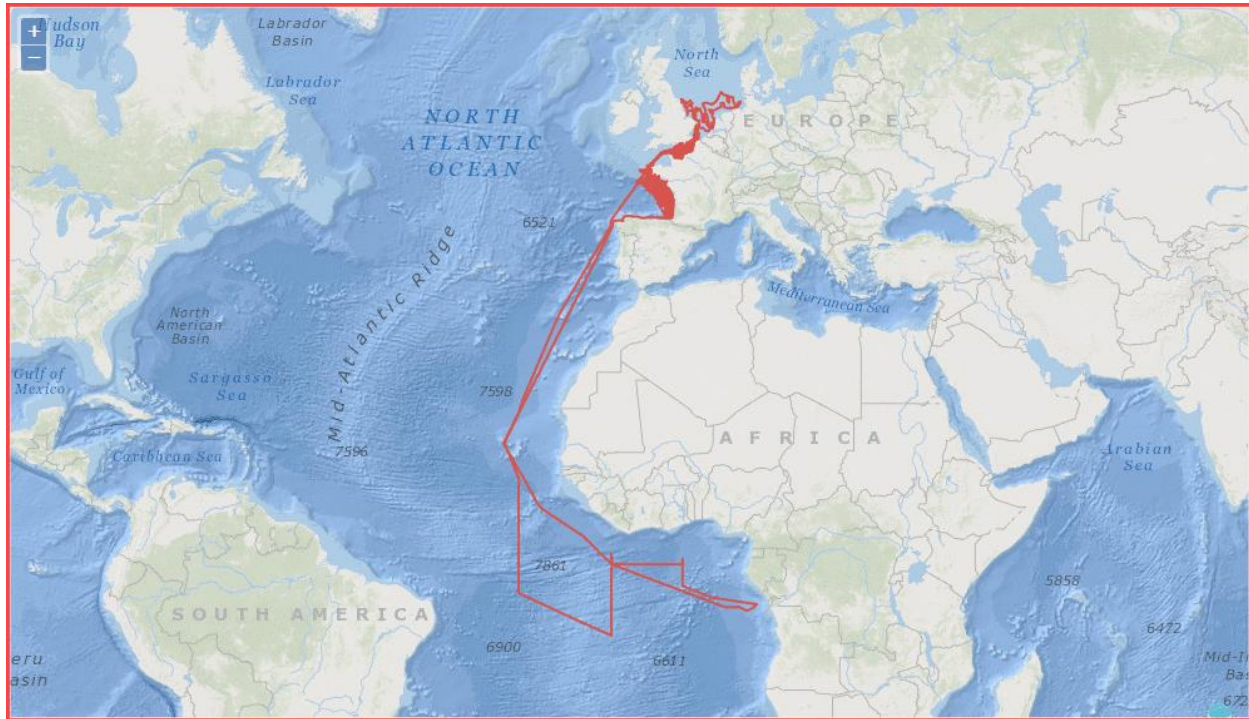


Figure 11 — Tracks of 15 cruises and legs in transit by *Thalassa* in 2017

**TR\_BREBOU**

16/01/2017 - 18/01/2017

**IBTS 2017**

VERIN Yves

19/01/2017 - 10/02/2017

**TR\_BOUBRE**

11/02/2017 - 12/02/2017

**TR\_BREMIN**

13/02/2017 - 25/02/2017

**PIRATA FR27**

BOURLES Bernard

25/02/2017 - 03/04/2017

**TR\_MINCOR**

05/04/2017 - 13/04/2017

**VOLT 2 RECUP**

SILVA JACINTO Ricardo

14/04/2017 - 17/04/2017

**PELGAS 2017**

DORAY Mathieu

21/04/2017 - 25/05/2017

**PHOENIX 2017**

DORAY Mathieu

27/05/2017 - 02/06/2017

**TR\_BRECON**

01/06/2017 - 03/06/2017

**ESS\_MODERN**

DUDUYER Sarah, LE BOUFFANT Naïg,

BERGER Laurent, PACAULT Anne

21/09/2017 - 03/10/2017

**TR\_BREBOU**

04/10/2017 - 06/10/2017

**CGFS2017**

TRAVERS-TROLET Morgane

06/10/2017 - 23/10/2017

**EVHOE 2017**

DUHAMEL Erwan, PAWLOWSKI

Lionel, GARREN François

25/10/2017 - 22/11/2017

**TR\_LORBRE**

05/12/2017 - 10/12/2017

#### 4.3.1.12 Cruises by RV *Thalia*

RV *Thalia* is a 24.50 m-long oceanographic vessel operating in the English Channel and the Bay of Biscay. It was built in Cherbourg in 1978.

It is a multi-purpose research vessel used for coastal environmental cruises and fisheries resource assessments. It is designed to perform shallow-water multibeam echo-sounder mapping, take hydrological measurements, film underwater videos, take samples using grab and dredge, as well as performing acoustic or seismic trials.



Here are its main characteristics:

**Coastal vessel**  
**NODC code: 35TC**  
**Call sign: FPCS**  
**Length 24m**  
**Crew: 6**  
**Scientists and technicians: 6**

For more details: <http://www.flotteoceanographique.fr/La-flotte/Navires/Navires-cotiers/Thalia>



Figure 12 — Tracks of 40 cruises and legs in transit by Thalia in 2017

**TR\_LOCLOR**

08/01/2017 - 08/01/2017

**TR\_LORCON**

28/01/2017 - 28/01/2017

**TR\_CONLTU**

15/02/2017 - 15/02/2017

**CARMOLIT 2017 LEG1**

QUEMENER Loïc

16/02/2017 - 17/02/2017

**TR\_LTULOR**

17/02/2017 - 17/02/2017

**REBENT 2017**

BROUDIN Caroline

20/02/2017 - 01/03/2017

**TR\_BREDOU**

06/03/2017 - 07/03/2017

**RAIE-JUVES**

LORANCE Pascal, CAROFF Nicolas,

GARREN François

08/03/2017 - 18/03/2017

**TR\_DOULOC**

19/03/2017 - 21/03/2017

**TR\_LOCHE**

16/04/2017 - 18/04/2017

**HYD2M 2017 LEG1**

MARIE Louis

19/04/2017 - 23/04/2017

**TR\_CHEBRE**

23/04/2017 - 24/04/2017

**REBENT 2017 BIS**

BROUDIN Caroline

28/04/2017 - 28/04/2017

**REM2040-2017**

LURTON Xavier

29/04/2017 - 04/05/2017

**S2MF**

LE GALL Yves

06/05/2017 - 11/05/2017

**TR\_BREDIE**

12/05/2017 - 13/05/2017

**TREMOR 2**

PAQUET Fabien, GAULLIER Virginie

14/05/2017 - 01/06/2017

**TR\_DIECHE**

01/06/2017 - 02/06/2017

**HYD2M 2017 LEG2**

MARIE Louis

03/06/2017 - 07/06/2017

**TR\_CHEBRE**

07/06/2017 - 08/06/2017

**TR\_BRELTU**

10/06/2017 - 13/06/2017

**ECHOSONDE LEG1**

DORAY Mathieu

12/06/2017 - 14/06/2017

**TR\_LTUBAE**

14/06/2017 - 15/06/2017

**ASPEX9**

MARIE Louis

25/06/2017 - 26/06/2017

**TR\_BREOUJ**

27/06/2017 - 29/06/2017

**COMOR 47**

FOUCHER Eric, QUINQUIS Jérôme

30/06/2017 - 17/07/2017

**TR\_OUILOC**

17/07/2017 - 19/07/2017

**TR\_LOCLTU**

15/08/2017 - 16/08/2017

**SELILOIRE 2017**

AKCHA Farida

16/08/2017 - 23/08/2017

**TR\_SNZCDB**

23/08/2017 - 25/08/2017

**NURSE 2017**

BRIND'AMOUR Anik

25/08/2017 - 06/09/2017

**TR\_SNZSQP**

08/09/2017 - 10/09/2017

**COSB2017**

CAROFF Nicolas

11/09/2017 - 22/09/2017

**TR\_SQPBRE**

22/09/2017 - 24/09/2017



**ESS\_SOL**

GAUTIER Laurent  
07/10/2017 - 09/10/2017

**TR\_BRELU**

09/10/2017 - 10/10/2017

**CARMOLIT 2017 LEG2**

QUEMENER Loïc  
11/10/2017 - 13/10/2017

**ECHOSONDE LEG2**

DORAY Mathieu  
14/10/2017 - 17/10/2017

**BBWAVES 2017**

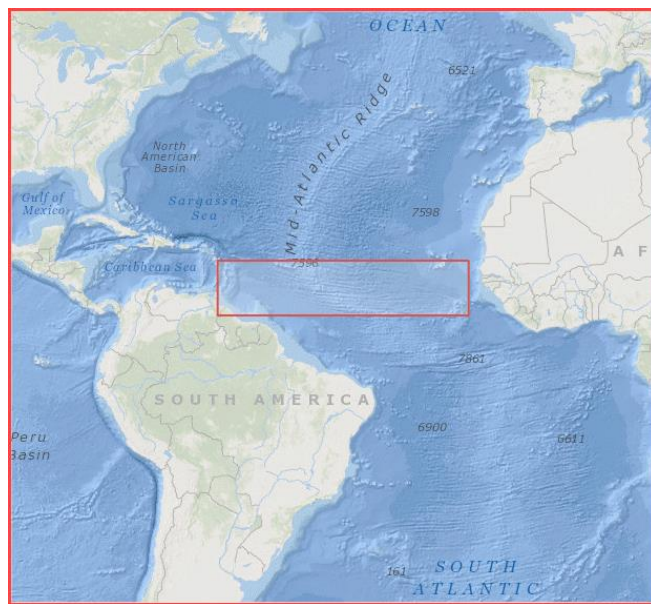
SUTHERLAND Peter  
26/09/2017 - 06/10/2017

**TR\_SNZCON**

16/10/2017 - 17/10/2017

#### 4.3.1.13 Cruises aboard other vessels

This year, 3 cruises were performed aboard vessels which do not belong to the JSU fleet. These cruises used other facilities made available by other organizations.



#### **MOOSE (MOLA) 2017**

##### ***Néréis II***

CONAN Pascal, VUILLEMIN Renaud

22/02/2017 - 15/12/2017

#### **VIDEO GALION 2017**

##### ***Juliarth***

VAZ Sandrine

09/04/2017 - 13/04/2017

#### **SARGASSES TRANSATLANTIQUE**

##### ***Yersin***

CHANGEUX Thomas

05/10/2017 - 24/10/2017



#### **4.4 LIST OF CRUISES**

The alphabetical list of cruises performed in 2017 is given below.

Information about each of the cruises is available on the cruise catalogue site <http://campagnes.flotteoceanographique.fr/> by clicking [CTRL + left CLICK] on the name of the cruise.



Cruise	Vessel	Start date	End date	Geographical area	Name of chief scientist	Chief scientist's laboratory
<a href="#">ABRACOS 2</a>	<i>Antea</i>	08 04 2017	09 05 2017	Atlantique SW (Limite 20 W)	BERTRAND Arnaud	IRD SETE CENTER, IRD
<a href="#">ALPARRAY LEG1</a>	<i>Pourquoi pas ?</i>	14 06 2017	26 06 2017	Ligurian Sea	CRAWFORD Wayne	INSTITUT DE PHYSIQUE DU GLOBE DE PARIS IPGP, Institut de Physique du Globe de Paris
<a href="#">ALPARRAY LIGURE LEG1</a>	<i>Téthys II</i>	25 04 2017	26 04 2017	Ligurian Sea	DESSA Jean-Xavier	GEOSCIENCES AZUR - SOPHIA ANTIPOLIS (GEOAZUR), CNRS
<a href="#">ALPARRAY LIGURE LEG2</a>	<i>Téthys II</i>	27 11 2017	28 11 2017	Ligurian Sea	DESSA Jean-Xavier	GEOSCIENCES AZUR - SOPHIA ANTIPOLIS (GEOAZUR), CNRS
<a href="#">ARMORIC KULLENBERG</a>	<i>Côtes De La Manche</i>	15 03 2017	16 03 2017	Celtic Sea	MACE Eric	STATION BIOLOGIQUE DE ROSCOFF (SBR), SORBONNE UNIVERSITÉS, UPMC UNIV PARIS 06 ET CNRS, CNRS
<a href="#">ASPEX9</a>	<i>Thalia</i>	25 06 2017	26 06 2017	Bay of Biscay	MARIE Louis	LABORATOIRE D'OCÉANOGRAPHIE PHYSIQUE ET SPATIALE (LOPS) - UMR 6523 CNRS-IFREMER-IRD-UBO, Ifremer
<a href="#">ATLANTHROV</a>	<i>Côtes De La Manche</i>	26 05 2017	09 06 2017	Bay of Biscay	RAUGEL Ewen	UNDERWATER SYSTEMS UNIT - TOULON, Ifremer
<a href="#">BATHYRADE</a>	<i>Haliotis</i>	22 07 2017	22 07 2017	Celtic Sea	GUERIN Charline	GM- MARINE GEOSCIENCES, Ifremer
<a href="#">BBWAVES 2017</a>	<i>Thalia</i>	26 09 2017	06 10 2017	Celtic Sea	SUTHERLAND Peter	LABORATOIRE D'OCÉANOGRAPHIE PHYSIQUE ET SPATIALE (LOPS) - UMR 6523 CNRS-IFREMER-IRD-UBO, Ifremer
<a href="#">BILLION 42</a>	<i>Téthys II</i>	17 06 2017	24 06 2017	Western Mediterranean basin	KUNESCH Stéphane	MARINE ENVIRONMENTAL TRAINING AND RESEARCH CENTRE-CEFREM, University of Perpignan
<a href="#">BIOBAZ 2017</a>	<i>Pourquoi pas ?</i>	26 07 2017	27 07 2017	North Atlantic Ocean	LALLIER François	STATION BIOLOGIQUE DE ROSCOFF (SBR), SORBONNE UNIVERSITÉS, UPMC UNIV PARIS 06 ET CNRS, CNRS
<a href="#">BIOMAGLO</a>	<i>Antea</i>	21 01 2017	10 02 2017	Indian Ocean	CORBARI Laure	INSTITUT SYSTÉMATIQUE, ÉVOLUTION, BIODIVERSITÉ - UMR 7205, Museum National D'Histoire Naturelle
<a href="#">BOUSSOLE 2017</a>	<i>Téthys II</i>	16 01 2017	07 12 2017	Ligurian Sea	GOLBOL Melek	OCEANOGRAPHY LABORATORY OF VILLEFRANCHE (LOV), University of Paris VI - UPMC
<a href="#">CARIOCA 2</a>	<i>Alis</i>	13 05 2017	25 05 2017	Pacifique Sud	RODOLFO METALPA Riccardo	UMR ENTROPIE, IRD
<a href="#">CARMOLIT 2017 LEG1</a>	<i>Thalia</i>	16 02 2017	17 02 2017	Bay of Biscay	QUEMENER Loïc	RDT - DPT TECHNOLOGICAL RESEARCH & DEVELOPMENT, Ifremer
<a href="#">CARMOLIT 2017 LEG2</a>	<i>Thalia</i>	11 10 2017	13 10 2017	Bay of Biscay	QUEMENER Loïc	RDT - DPT TECHNOLOGICAL RESEARCH & DEVELOPMENT, Ifremer

Cruise	Vessel	Start date	End date	Geographical area	Name of chief scientist	Chief scientist's laboratory
<a href="#">CARTOHROV-GEN</a>	<i>L'Europe</i>	03 11 2017	24 11 2017	Mediterranean	RAUGEL Ewen	UNDERWATER SYSTEMS UNIT - TOULON, Ifremer
<a href="#">CGFS2017</a>	<i>Thalassa</i>	06 10 2017	23 10 2017	English Channel	TRAVERS-TROLET Morgane	HMMN- ENGLISH CHANNEL-NORTH SEA FISHERIES SCIENCES DEPARTMENT, Ifremer
<a href="#">COMOR 47</a>	<i>Thalia</i>	30 06 2017	17 07 2017	English Channel	FOUCHER Eric	HMMN- ENGLISH CHANNEL-NORTH SEA FISHERIES SCIENCES DEPARTMENT, Ifremer
<a href="#">COSB2017</a>	<i>Thalia</i>	11 09 2017	22 09 2017	English Channel	CAROFF Nicolas	STH- FISHERIES SCIENCES AND TECHNOLOGIES DEPARTMENT, Ifremer
<a href="#">CROCO-CAUX</a>	<i>Haliotis</i>	04 06 2017	13 06 2017	English Channel	DUPERRET Anne	LABORATOIRE ONDES & MILIEUX COMPLEXES (LOMC) UMR6294 - PRONY, CNRS
<a href="#">DIVACOU 2017 (10)</a>	<i>L'Europe</i>	11 05 2017	17 05 2017	Western Mediterranean basin	BOUHIER Marie-Edith	UNDERWATER SYSTEMS UNIT - TOULON, Ifremer
<a href="#">ECHOSONDE LEG1</a>	<i>Thalia</i>	12 06 2017	14 06 2017	Bay of Biscay	DORAY Mathieu	EMH- ECOLOGY AND MODELS FOR FISHERIES SCIENCE DEPARTMENT, Ifremer
<a href="#">ECHOSONDE LEG2</a>	<i>Thalia</i>	14 10 2017	17 10 2017	Bay of Biscay	DORAY Mathieu	EMH- ECOLOGY AND MODELS FOR FISHERIES SCIENCE DEPARTMENT, Ifremer
<a href="#">EMEMO 2017</a>	<i>Haliotis</i>	20 05 2017	31 05 2017	Bay of Biscay	CHAUMILLON Eric	LITTORAL ENVIRONNEMENT ET SOCIÉTÉS (LIENSS) - UMR 7266, Université de la Rochelle
<a href="#">EMSO LIGURE 2017</a>	<i>Téthys II</i>	21 11 2017	21 11 2017	Western Mediterranean basin	LEFEVRE Dominique	INSTITUT MEDITERRANNEEN D'OCEANOLOGIE - LUMINY (MIO) - UMR 7294 / 235 / 110, CNRS
<a href="#">ESSAUV17-EU</a>	<i>L'Europe</i>	16 04 2017	26 04 2017	Western Mediterranean basin	JAUSSAUD Patrick	UNDERWATER SYSTEMS UNIT - TOULON, Ifremer
<a href="#">ESS_DEC</a>	<i>L'Atalante</i>	26 02 2017	03 03 2017	Western Mediterranean basin	LOSSOUARN Hubert	GENAVIR BREST, Ifremer
<a href="#">ESS_GEN_AUV_IDFX</a>	<i>L'Europe</i>	13 04 2017	15 04 2017	Western Mediterranean basin	PLACAUD Xavier	GENAVIR CENTRE IFREMER LA SEYNE SUR MER, Ifremer
<a href="#">ESS_GRAVI</a>	<i>L'Atalante</i>	12 03 2017	14 03 2017	Western Mediterranean basin	LOSSOUARN Hubert	GENAVIR BREST, Ifremer
<a href="#">ESS_LOPS17-01</a>	<i>L'Europe</i>	18 05 2017	22 05 2017	Western Mediterranean basin	HAMON Michel	LABORATOIRE D'OCÉANOGRAPHIE PHYSIQUE ET SPATIALE (LOPS) - UMR 6523 CNRS-IFREMER-IRD-UBO, Ifremer
<a href="#">ESS_LOPS17-02</a>	<i>L'Europe</i>	30 10 2017	02 11 2017	Western Mediterranean basin	HAMON Michel	LABORATOIRE D'OCÉANOGRAPHIE PHYSIQUE ET SPATIALE (LOPS) - UMR 6523 CNRS-IFREMER-IRD-UBO, Ifremer
<a href="#">ESS_MODERN</a>	<i>Thalassa</i>	21 09 2017	03 10 2017	North Atlantic Ocean	DUDUYER Sarah	NSE - VESSELS AND SHIPBOARD SYSTEMS, Ifremer

Cruise	Vessel	Start date	End date	Geographical area	Name of chief scientist	Chief scientist's laboratory
<a href="#">ESSNAUT 2017</a>	<i>Pourquoi pas ?</i>	02 12 2017	11 12 2017	Western Mediterranean basin	CAMBON-BONAVITA Marie-Anne	EEP-DEPARTEMENT ETUDES DES ECOSYSTEMES PROFONDS, Ifremer
<a href="#">ESS_PENF50 2017</a>	<i>L'Atalante</i>	26 02 2017	03 03 2017	Ligurian Sea	DUSSUD Loïc	RDT - DPT TECHNOLOGICAL RESEARCH & DEVELOPMENT, Ifremer
<a href="#">ESSROV17</a>	<i>L'Atalante</i>	09 03 2017	12 03 2017	Mediterranean	PLACAUD Xavier	GENAVIR CENTRE IFREMER LA SEYNE SUR MER, Ifremer
<a href="#">ESS_SISM</a>	<i>L'Atalante</i>	02 05 2017	05 05 2017	North Atlantic Ocean	TOUS Jean-Yves	GENAVIR BREST, Ifremer
<a href="#">ESS_SOL</a>	<i>Thalia</i>	07 10 2017	09 10 2017	Celtic Sea	GAUTIER Laurent	RDT - DPT TECHNOLOGICAL RESEARCH & DEVELOPMENT, Ifremer
<a href="#">ESS_SYS</a>	<i>L'Atalante</i>	05 03 2017	07 03 2017	Mediterranean	PLACAUD Xavier	GENAVIR CENTRE IFREMER LA SEYNE SUR MER, Ifremer
<a href="#">ESSTECH-EU-BRUIT</a>	<i>L'Europe</i>	03 10 2017	06 10 2017	Western Mediterranean basin	LE GALL Yves	NSE-DEPARTEMENT NAVIRES ET SYSTEMES EMBARQUES, Ifremer
<a href="#">ESSTECH_HROV_GEN_17</a>	<i>L'Europe</i>	21 09 2017	28 09 2017	Western Mediterranean basin	BAUSSAN Clément	GENAVIR CENTRE IFREMER LA SEYNE SUR MER, Ifremer
<a href="#">ESSTECH17-GEN-EU</a>	<i>L'Europe</i>	31 03 2017	04 04 2017	Western Mediterranean basin	BISQUAY Hervé	GENAVIR BREST, Ifremer
<a href="#">ESSTECH17-GEN-HA</a>	<i>Haliotis</i>	18 04 2017	21 04 2017	Celtic Sea	BISQUAY Hervé	GENAVIR BREST, Ifremer
<a href="#">ESSTECH17-HROV</a>	<i>L'Europe</i>	05 04 2017	12 04 2017	Western Mediterranean basin	RAUGEL Ewen	UNDERWATER SYSTEMS UNIT - TOULON, Ifremer
<a href="#">ETOILE</a>	<i>Côtes De La Manche</i>	08 07 2017	06 08 2017	Bay of Biscay	LAZURE Pascal	LABORATOIRE D'Océanographie Physique et Spatiale (LOPS) - UMR 6523 CNRS-IFREMER-IRD-UBO, Ifremer
<a href="#">EVHOE 2017</a>	<i>Thalassa</i>	25 10 2017	22 11 2017	Bay of Biscay	DUHAMEL Erwan	STH/LBH-LABORATOIRE BIOLOGIE HALIEUTIQUE, Ifremer
<a href="#">GARANTI</a>	<i>L'Atalante</i>	06 05 2017	25 06 2017	Caribbean Sea	LEBRUN Jean Frédéric	UMR 5243 - GÉOSCIENCES MONTPELLIER - UNIVERSITÉ ANTILLES, Université des Antilles et de la Guyane
<a href="#">GAZCOGNE3</a>	<i>Côtes De La Manche</i>	08 08 2017	10 08 2017	Bay of Biscay	THEREAU Estelle	GM- MARINE GEOSCIENCES, Ifremer
<a href="#">HAPOGE</a>	<i>Côtes De La Manche</i>	13 07 2017	19 07 2017	Bay of Biscay	GILLET Hervé	EPOC - DÉPARTEMENT DE GÉOLOGIE ET OCÉANOGRAPHIE (DGO), Université de Bordeaux
<a href="#">HERMINE</a>	<i>Pourquoi pas ?</i>	16 03 2017	27 04 2017	North Atlantic Ocean	FOUQUET Yves	GM- MARINE GEOSCIENCES, Ifremer

Cruise	Vessel	Start date	End date	Geographical area	Name of chief scientist	Chief scientist's laboratory
<a href="#">HOOPLA 2017</a>	<i>Haliotis</i>	09 05 2017	17 05 2017	Bay of Biscay	BALTZER Agnès	LETG - LITTORAL ENVIRONMENT REMOTE SENSING GEOMATICS, University of Nantes
<a href="#">HYD2M 2017 LEG1</a>	<i>Thalia</i>	19 04 2017	23 04 2017	English Channel	MARIE Louis	LABORATOIRE D'OCÉANOGRAPHIE PHYSIQUE ET SPATIALE (LOPS) - UMR 6523 CNRS-IFREMER-IRD-UBO, Ifremer
<a href="#">HYD2M 2017 LEG2</a>	<i>Thalia</i>	03 06 2017	07 06 2017	English Channel	MARIE Louis	LABORATOIRE D'OCÉANOGRAPHIE PHYSIQUE ET SPATIALE (LOPS) - UMR 6523 CNRS-IFREMER-IRD-UBO, Ifremer
<a href="#">HYD2M 2017 LEG3</a>	<i>Côtes De La Manche</i>	18 09 2017	21 09 2017	English Channel	BAILLY DU BOIS Pascal	INSTITUT DE RADIOPROTECTION ET DE SURETE NUCLEAIRE, Institut de Radioprotection et de Sureté Nucléaire
<a href="#">HYD2M 2017 LEG4</a>	<i>Côtes De La Manche</i>	13 10 2017	16 10 2017	English Channel	BAILLY DU BOIS Pascal	INSTITUT DE RADIOPROTECTION ET DE SURETE NUCLEAIRE, Institut de Radioprotection et de Sureté Nucléaire
<a href="#">IBTS 2017</a>	<i>Thalassa</i>	19 01 2017	10 02 2017	North Sea	VERIN Yves	HMMN- ENGLISH CHANNEL-NORTH SEA FISHERIES SCIENCES DEPARTMENT, Ifremer
<a href="#">JERICOBENT-2</a>	<i>Côtes De La Manche</i>	14 08 2017	26 08 2017	Bay of Biscay	DEFLANDRE Bruno	ENVIRONNEMENTS ET PALÉOENVIRONNEMENTS OCÉANIQUES (EPOC), Université de Bordeaux
<a href="#">KANADEEP</a>	<i>Alis</i>	30 08 2017	27 09 2017	SW Pacific (140 W boundary)	SAMADI Sarah	INSTITUT SYSTÉMATIQUE, ÉVOLUTION, BIODIVERSITÉ - UMR 7205, Museum National D'Histoire Naturelle
<a href="#">MARACAS 3</a>	<i>Alis</i>	07 08 2017	27 08 2017	Coral Sea	GARRIGUE Claire	IRD NOUMEA CENTER, IRD
<a href="#">MATUGLI 2017 LEG1</a>	<i>Téthys II</i>	25 01 2017	01 02 2017	Mediterranean	LE BERRE David	DYNECO/DHYSÉD - HYDRO-SEDIMENTARY DYNAMICS LABORATORY, Ifremer
<a href="#">MATUGLI 2017 LEG2</a>	<i>Téthys II</i>	24 02 2017	03 03 2017	Western Mediterranean basin	LE BERRE David	DYNECO/DHYSÉD - HYDRO-SEDIMENTARY DYNAMICS LABORATORY, Ifremer
<a href="#">MD 206 / OBSAUSTRAL</a>	<i>Marion Dufresne</i>	04 01 2017	10 02 2017	Indian Ocean	METZL Nicolas	OCEANOGRAPHY AND CLIMATE LABORATORY (LOCEAN), UMR 7159, University of Paris VI - UPMC
<a href="#">MD 208 / WALTERS SHOAL</a>	<i>Marion Dufresne</i>	24 04 2017	18 05 2017	Indian Ocean	BOUCHET Philippe	SYSTEMATICS & EVOLUTION DEPARTMENT, National Museum of natural history MNHN
<a href="#">MD 210 / MIRAGE 2</a>	<i>Marion Dufresne</i>	28 09 2017	21 10 2017	Archipel d'Indonésie	SINGH Satish	INSTITUT DE PHYSIQUE DU GLOBE DE PARIS IPGP, Institut de Physique du Globe de Paris
<a href="#">MEDITS 2017</a>	<i>L'Europe</i>	27 05 2017	30 06 2017	Western Mediterranean basin	JADAUD Angélique	IFREMER SETE STATION, Ifremer
<a href="#">METEOR 2017</a>	<i>Côtes De La Manche</i>	08 03 2017	04 12 2017	Bay of Biscay	GRASSO Florent	DYNECO/DHYSÉD - HYDRO-SEDIMENTARY DYNAMICS LABORATORY, Ifremer
<a href="#">MINERVE 2017</a>	<i>L'Astrolabe</i>	23 02 2017	07 03 2017	Antarctic Ocean	FALCO Cédric	IMAGES-INSTITUTE FOR MODELING AND ANALYSIS OF MARINE GEO-ENVIRONMENT, University of Perpignan

Cruise	Vessel	Start date	End date	Geographical area	Name of chief scientist	Chief scientist's laboratory
<a href="#">MOMARSAT2017</a>	<i>Pourquoi pas ?</i>	08 07 2017	28 07 2017	North Atlantic Ocean	SARRADIN Pierre-Marie	EEP/LEP- DEEP SEA ENVIRONMENT LABORATORY, IFREMER
<a href="#">MOOSE (ANTARES) 2017</a>	<i>Téthys II</i>	20 01 2017	08 12 2017	Western Mediterranean basin	LEFEVRE Dominique	INSTITUT MEDITERRANNEEN D'OCEANOLOGIE - LUMINY (MIO) - UMR 7294 / 235 / 110, CNRS
<a href="#">MOOSE (DYFAMED) 2017</a>	<i>Téthys II</i>	21 01 2017	04 12 2017	Western Mediterranean basin	DIAMOND-RIQUIER Emilie	OCEANOLOGICAL OBSERVATORY OF VILLEFRANCHE SUR MER (OOV), University of Paris VI - UPMC
<a href="#">MOOSE (MOLA) 2017</a>	<i>Néréïs II</i>	22 02 2017	15 12 2017	Western Mediterranean basin	CONAN Pascal	OCEANOLOGICAL OBSERVATORY OF BANYULS (OSU-OOB), University of Paris VI - UPMC
<a href="#">MOOSE-GE 2017</a>	<i>L'Atalante</i>	30 08 2017	24 09 2017	Western Mediterranean basin	TESTOR Pierre	OCEANOGRAPHY AND CLIMATE LABORATORY (LOCEAN), UMR 7159, University of Paris VI - UPMC
<a href="#">NAFAS</a>	<i>Téthys II</i>	11 07 2017	23 07 2017	Mediterranean	RODRIGUEZ Mathieu	ECOLE NORMALE SUPERIEURE DE PARIS, Ecole Normale Supérieure
<a href="#">NANO</a>	<i>Côtes De La Manche</i>	24 02 2017	01 03 2017	Celtic Sea	COLAS Florent	RDT - DPT TECHNOLOGICAL RESEARCH & DEVELOPMENT, Ifremer
<a href="#">NURSE 2017</a>	<i>Thalia</i>	25 08 2017	06 09 2017	Bay of Biscay	BRIND'AMOUR Anik	EMH- ECOLOGY AND MODELS FOR FISHERIES SCIENCE DEPARTMENT, Ifremer
<a href="#">ORHAGO 17</a>	<i>Côtes De La Manche</i>	02 11 2017	24 11 2017	Bay of Biscay	COUPEAU Yann	IFREMER LORIENT STATION, Ifremer
<a href="#">PAMELA-MOZ08</a>	<i>Antea</i>	05 01 2017	19 01 2017	Indian Ocean	KHRIPOUNOFF Alexis	EEP/LEP- DEEP SEA ENVIRONMENT LABORATORY, IFREMER
<a href="#">PEACETIME</a>	<i>Pourquoi pas ?</i>	10 05 2017	11 06 2017	Mediterranean	GUIEU Cécile	OCEANOGRAPHY LABORATORY OF VILLEFRANCHE (LOV), University of Paris VI - UPMC
<a href="#">PELGAS 2017</a>	<i>Thalassa</i>	21 04 2017	25 05 2017	Bay of Biscay	DORAY Mathieu	EMH- ECOLOGY AND MODELS FOR FISHERIES SCIENCE DEPARTMENT, Ifremer
<a href="#">PELMED 2017</a>	<i>L'Europe</i>	01 07 2017	03 08 2017	Western Mediterranean basin	BOURDEIX Jean-Hervé	IFREMER SETE STATION, Ifremer
<a href="#">PHOENIX 2017</a>	<i>Thalassa</i>	27 05 2017	02 06 2017	Bay of Biscay	DORAY Mathieu	EMH- ECOLOGY AND MODELS FOR FISHERIES SCIENCE DEPARTMENT, Ifremer
<a href="#">PHRESQUES 2017</a>	<i>Côtes De La Manche</i>	05 02 2017	11 10 2017	English Channel	VERNEY Romaric	DYNECO/DHYSSED - HYDRO-SEDIMENTARY DYNAMICS LABORATORY, Ifremer
<a href="#">PIRATA FR27</a>	<i>Thalassa</i>	25 02 2017	03 04 2017	Atlantic Ocean	BOURLES Bernard	IRD BRITTANY CENTER, IRD
<a href="#">PROTEVSMED 2017 LEG1</a>	<i>L'Atalante</i>	27 01 2017	07 02 2017	Mediterranean	IETA MOUTON	SHOM - BREST CENTER, French Navy/SHOM

Cruise	Vessel	Start date	End date	Geographical area	Name of chief scientist	Chief scientist's laboratory
<a href="#">PROTEVSMED_2017_LEG2</a>	<i>L'Atalante</i>	11 02 2017	23 02 2017	Mediterranean	IETA MOUTON	SHOM - BREST CENTER, French Navy/SHOM
<a href="#">PUFFALIS</a>	<i>Alis</i>	18 03 2017	02 04 2017	SW Pacific (140 W boundary)	MENKES Christophe	IRD NOUMEA CENTER, IRD
<a href="#">RAIE-JUVES</a>	<i>Thalia</i>	08 03 2017	18 03 2017	NE Atlantic (40 W boundary)	LORANCE Pascal	EMH- ECOLOGY AND MODELS FOR FISHERIES SCIENCE DEPARTMENT, Ifremer
<a href="#">REBENT 2017</a>	<i>Thalia</i>	20 02 2017	01 03 2017	NE Atlantic (40 W boundary)	BROUDIN Caroline	STATION BIOLOGIQUE DE ROSCOFF (SBR), SORBONNE UNIVERSITÉS, UPMC UNIV PARIS 06 ET CNRS, CNRS
<a href="#">REBENT 2017 BIS</a>	<i>Thalia</i>	28 04 2017	28 04 2017	Celtic Sea	BROUDIN Caroline	STATION BIOLOGIQUE DE ROSCOFF (SBR), SORBONNE UNIVERSITÉS, UPMC UNIV PARIS 06 ET CNRS, CNRS
<a href="#">REIVE</a>	<i>Côtes De La Manche</i>	23 03 2017	12 05 2017	English Channel	LOOTS Christophe	HMMN- ENGLISH CHANNEL-NORTH SEA FISHERIES SCIENCES DEPARTMENT, Ifremer
<a href="#">REM2040-2017</a>	<i>Thalia</i>	29 04 2017	04 05 2017	NE Atlantic (40 W boundary)	LURTON Xavier	NSE-DEPARTEMENT NAVIRES ET SYSTEMES EMBARQUES, Ifremer
<a href="#">RETZ2</a>	<i>Haliotis</i>	17 06 2017	19 07 2017	Bay of Biscay	KAUB Caroline	UMR 6538 CNRS OCEAN DOMAINS (LDO) - IEUM University of Western Brittany (UBO)
<a href="#">RREX 2017</a>	<i>L'Atalante</i>	14 07 2017	18 08 2017	North Atlantic Ocean	THIERRY Virginie	LABORATOIRE D'Océanographie Physique et Spatiale (LOPS) - UMR 6523 CNRS-IFREMER-IRD-UBO, Ifremer
<a href="#">SARGASSES CARAIBES</a>	<i>Antea</i>	19 06 2017	13 07 2017	North Atlantic Ocean	THIBAUT Thierry	INSTITUT MEDITERRANNEEN D'Océanologie - LUMINY (MIO) - UMR 7294 / 235 / 110, CNRS
<a href="#">SARGASSES TRANSATLANTIQUE</a>	<i>Unknown</i>	05 10 2017	24 10 2017	North Atlantic Ocean	CHANGEUX Thomas	INSTITUT MEDITERRANNEEN D'Océanologie - LUMINY (MIO) - UMR 7294 / 235 / 110, CNRS
<a href="#">SEEK LEAK</a>	<i>L'Europe</i>	04 09 2017	15 09 2017	Mediterranean	RINNERT Emmanuel	RDT - DPT TECHNOLOGICAL RESEARCH & DEVELOPMENT, Ifremer
<a href="#">SELILOIRE 2017</a>	<i>Thalia</i>	16 08 2017	23 08 2017	Bay of Biscay	AKCHA Farida	DPT RBE / UR BIOGEOCHEMISTRY & ECOTOXICOLOGY (NANTES), Ifremer
<a href="#">SHEOPS</a>	<i>Antea</i>	26 05 2017	11 06 2017	Atlantique SW (Limite 20 W)	RABINEAU Marina	UMR 6538 CNRS OCEAN DOMAINS (LDO) - IEUM University of Western Brittany (UBO)
<a href="#">SOGIR 17</a>	<i>Côtes De La Manche</i>	29 01 2017	29 11 2017	Bay of Biscay	DERRIENNIC Hervé	EPOC - DÉPARTEMENT DE GÉOLOGIE ET OCÉANOGRAPHIE (DGO), Université de Bordeaux
<a href="#">SOHN AREA</a>	<i>L'Astrolabe</i>	20 02 2017	06 03 2017	Antarctic Ocean	SAMARAN Flore	ENSTA BRETAGNE, Ensieta
<a href="#">SOLVEIG V</a>	<i>L'Europe</i>	16 09 2017	20 09 2017	Western Mediterranean basin	SILVA JACINTO Ricardo	GM- MARINE GEOSCIENCES, Ifremer

Cruise	Vessel	Start date	End date	Geographical area	Name of chief scientist	Chief scientist's laboratory
<a href="#">SPM2017</a>	<i>Antea</i>	10 08 2017	15 09 2017	NW Atlantic (40 W boundary)	LAZURE Pascal	LABORATOIRE D'OCÉANOGRAPHIE PHYSIQUE ET SPATIALE (LOPS) - UMR 6523 CNRS-IFREMER-IRD-UBO, Ifremer
<a href="#">SUBSAINTES</a>	<i>L'Atalante</i>	02 04 2017	24 04 2017	NW Atlantic (40 W boundary)	ESCARTIN Javier	INSTITUT DE PHYSIQUE DU GLOBE DE PARIS IPGP, Institut de Physique du Globe de Paris
<a href="#">SUPERNATURAL</a>	<i>Alis</i>	05 04 2017	16 04 2017	Pacifique Sud	RODOLFO METALPA Riccardo	UMR ENTROPIE, IRD
<a href="#">S2MF</a>	<i>Thalia</i>	06 05 2017	11 05 2017	Atlantic Ocean	LE GALL Yves	NSE-DEPARTEMENT NAVIRES ET SYSTEMES EMBARQUES, Ifremer
<a href="#">TR BOUBRE</a>	<i>Thalassa</i>	11 02 2017	12 02 2017	Atlantic Ocean	Transit with no chief scientist.	GENAVIR BREST, Ifremer
<a href="#">TR BREBOU</a>	<i>Thalassa</i>	04 10 2017	06 10 2017	Atlantic Ocean	Transit with no chief scientist.	GENAVIR BREST, Ifremer
<a href="#">TR BREBOU</a>	<i>Thalassa</i>	16 01 2017	18 01 2017	Atlantic Ocean	Transit with no chief scientist.	GENAVIR BREST, Ifremer
<a href="#">TR BRECON</a>	<i>Thalassa</i>	01 06 2017	03 06 2017	Atlantic Ocean	Transit with no chief scientist.	GENAVIR BREST, Ifremer
<a href="#">TR BREDIE</a>	<i>Thalia</i>	12 05 2017	13 05 2017	Atlantic Ocean	Transit with no chief scientist.	GENAVIR BREST, Ifremer
<a href="#">TR BREDOU</a>	<i>Thalia</i>	06 03 2017	07 03 2017	Atlantic Ocean	Transit with no chief scientist.	GENAVIR BREST, Ifremer
<a href="#">TR BRELOR</a>	<i>Antea</i>	28 09 2017	30 09 2017	Atlantic Ocean	Transit with no chief scientist.	GENAVIR BREST, Ifremer
<a href="#">TR BRELTU</a>	<i>Thalia</i>	09 10 2017	10 10 2017	Atlantic Ocean	Transit with no chief scientist.	GENAVIR BREST, Ifremer
<a href="#">TR BRELTU</a>	<i>Thalia</i>	10 06 2017	13 06 2017	Atlantic Ocean	Transit with no chief scientist.	GENAVIR BREST, Ifremer
<a href="#">TR BREMIN</a>	<i>Thalassa</i>	13 02 2017	25 02 2017	Atlantic Ocean	Transit with no chief scientist.	GENAVIR BREST, Ifremer
<a href="#">TR BREOUI</a>	<i>Thalia</i>	27 06 2017	29 06 2017	Atlantic Ocean	Transit with no chief scientist.	GENAVIR BREST, Ifremer
<a href="#">TR BRESEY</a>	<i>Pourquoi pas ?</i>	20 11 2017	28 11 2017	Atlantic Ocean	Transit with no chief scientist.	GENAVIR BREST, Ifremer
<a href="#">TR BRESEY</a>	<i>L'Atalante</i>	21 08 2017	27 08 2017	Atlantic Ocean	Transit with no chief scientist.	GENAVIR BREST, Ifremer

Cruise	Vessel	Start date	End date	Geographical area	Name of chief scientist	Chief scientist's laboratory
<a href="#">TR_CAPRCF</a>	<i>Antea</i>	21 03 2017	04 04 2017	Atlantic Ocean	Transit with no chief scientist.	GENAVIR BREST, Ifremer
<a href="#">TR_CAYSAO</a>	<i>Antea</i>	22 05 2017	26 05 2017	Atlantic Ocean	Transit with no chief scientist.	GENAVIR BREST, Ifremer
<a href="#">TR_CHEBRE</a>	<i>Thalia</i>	23 04 2017	24 04 2017	Atlantic Ocean	Transit with no chief scientist.	GENAVIR BREST, Ifremer
<a href="#">TR_CHEBRE</a>	<i>Thalia</i>	07 06 2017	08 06 2017	Atlantic Ocean	Transit with no chief scientist.	GENAVIR BREST, Ifremer
<a href="#">TR_CONLTU</a>	<i>Thalia</i>	15 02 2017	15 02 2017	Atlantic Ocean	Transit with no chief scientist.	GENAVIR BREST, Ifremer
<a href="#">TR_DIECHE</a>	<i>Thalia</i>	01 06 2017	02 06 2017	Atlantic Ocean	Transit with no chief scientist.	GENAVIR BREST, Ifremer
<a href="#">TR_DOULOC</a>	<i>Thalia</i>	19 03 2017	21 03 2017	Atlantic Ocean	Transit with no chief scientist.	GENAVIR BREST, Ifremer
<a href="#">TR_DURCAP</a>	<i>Antea</i>	13 03 2017	20 03 2017	Indian Ocean	Transit with no chief scientist.	GENAVIR BREST, Ifremer
<a href="#">TR_DURMIN</a>	<i>Pourquoi pas ?</i>	20 02 2017	16 03 2017	Atlantic Ocean	Transit with no chief scientist.	GENAVIR BREST, Ifremer
<a href="#">TREMOR 2</a>	<i>Thalia</i>	14 05 2017	01 06 2017	English Channel	PAQUET Fabien	BUREAU OF GEOLOGICAL & MINING RESEARCH/GEO (BRGM, ORLEANS), BRGM
<a href="#">TR_FDFJOH</a>	<i>L'Atalante</i>	04 07 2017	12 07 2017	Atlantic Ocean	Transit with no chief scientist.	GENAVIR BREST, Ifremer
<a href="#">TR_LOCCHE</a>	<i>Thalia</i>	16 04 2017	18 04 2017	Atlantic Ocean	Transit with no chief scientist.	GENAVIR BREST, Ifremer
<a href="#">TR_LOCLOR</a>	<i>Thalia</i>	08 01 2017	08 01 2017	Atlantic Ocean	Transit with no chief scientist.	GENAVIR BREST, Ifremer
<a href="#">TR_LOCLTU</a>	<i>Thalia</i>	15 08 2017	16 08 2017	Atlantic Ocean	Transit with no chief scientist.	GENAVIR BREST, Ifremer
<a href="#">TR_LONDUR</a>	<i>Antea</i>	11 02 2017	21 02 2017	Indian Ocean	Transit with no chief scientist.	GENAVIR BREST, Ifremer
<a href="#">TR_LORBRE</a>	<i>Thalassa</i>	05 12 2017	10 12 2017	Atlantic Ocean	Transit with no chief scientist.	GENAVIR BREST, Ifremer
<a href="#">TR_LORCON</a>	<i>Thalia</i>	28 01 2017	28 01 2017	Atlantic Ocean	Transit with no chief scientist.	GENAVIR BREST, Ifremer



Cruise	Vessel	Start date	End date	Geographical area	Name of chief scientist	Chief scientist's laboratory
<a href="#">TR LPODUR</a>	<i>Pourquoi pas ?</i>	09 01 2017	14 01 2017	Indian Ocean	Transit with no chief scientist.	GENAVIR BREST, Ifremer
<a href="#">TR LTUBAE</a>	<i>Thalia</i>	14 06 2017	15 06 2017	Atlantic Ocean	Transit with no chief scientist.	GENAVIR BREST, Ifremer
<a href="#">TR LTULOR</a>	<i>Thalia</i>	17 02 2017	17 02 2017	Atlantic Ocean	Transit with no chief scientist.	GENAVIR BREST, Ifremer
<a href="#">TR MINCOR</a>	<i>Thalassa</i>	05 04 2017	13 04 2017	Atlantic Ocean	Transit with no chief scientist.	GENAVIR BREST, Ifremer
<a href="#">TR NASSEY</a>	<i>L'Atalante</i>	05 01 2017	24 01 2017	Atlantic Ocean	Transit with no chief scientist.	GENAVIR BREST, Ifremer
<a href="#">TR NMARAB</a>	<i>Alis</i>	02 05 2017	13 05 2017	Indian Ocean	Transit with no chief scientist.	GENAVIR BREST, Ifremer
<a href="#">TR OUILOC</a>	<i>Thalia</i>	17 07 2017	19 07 2017	Atlantic Ocean	Transit with no chief scientist.	GENAVIR BREST, Ifremer
<a href="#">TR PAFPDE</a>	<i>L'Atalante</i>	24 06 2017	26 06 2017	Atlantic Ocean	Transit with no chief scientist.	GENAVIR BREST, Ifremer
<a href="#">TR PAPS PM</a>	<i>Antea</i>	13 07 2017	27 07 2017	Atlantic Ocean	Transit with no chief scientist.	GENAVIR BREST, Ifremer
<a href="#">TR PDASEY</a>	<i>Pourquoi pas ?</i>	29 04 2017	07 05 2017	Atlantic Ocean	Transit with no chief scientist.	GENAVIR BREST, Ifremer
<a href="#">TR RABNMA</a>	<i>Alis</i>	26 05 2017	04 06 2017	Indian Ocean	Transit with no chief scientist.	GENAVIR BREST, Ifremer
<a href="#">TR RCFCAY</a>	<i>Antea</i>	12 05 2017	15 05 2017	Atlantic Ocean	Transit with no chief scientist.	GENAVIR BREST, Ifremer
<a href="#">TR SANSEY</a>	<i>L'Atalante</i>	10 11 2017	16 11 2017	Mediterranean	Transit with no chief scientist.	GENAVIR BREST, Ifremer
<a href="#">TR SAOCAY</a>	<i>Antea</i>	11 06 2017	14 06 2017	Atlantic Ocean	Transit with no chief scientist.	GENAVIR BREST, Ifremer
<a href="#">TR SEYLHA</a>	<i>Pourquoi pas ?</i>	29 06 2017	07 07 2017	Mediterranean	Transit with no chief scientist.	GENAVIR BREST, Ifremer
<a href="#">TR SEYPAP</a>	<i>L'Atalante</i>	13 03 2017	31 03 2017	Mediterranean Region	Transit with no chief scientist.	GENAVIR BREST, Ifremer
<a href="#">TR SEYSAN</a>	<i>L'Atalante</i>	24 09 2017	03 10 2017	Mediterranean	Transit with no chief scientist.	GENAVIR BREST, Ifremer

Cruise	Vessel	Start date	End date	Geographical area	Name of chief scientist	Chief scientist's laboratory
<a href="#">TR_SNZCDB</a>	<i>Thalia</i>	23 08 2017	25 08 2017	Atlantic Ocean	Transit with no chief scientist.	GENAVIR BREST, Ifremer
<a href="#">TR_SNZCON</a>	<i>Thalia</i>	16 10 2017	17 10 2017	Atlantic Ocean	Transit with no chief scientist.	GENAVIR BREST, Ifremer
<a href="#">TR_SNZSQP</a>	<i>Thalia</i>	08 09 2017	10 09 2017	Atlantic Ocean	Transit with no chief scientist.	GENAVIR BREST, Ifremer
<a href="#">TR_SPMBRE</a>	<i>Antea</i>	16 09 2017	28 09 2017	Atlantic Ocean	Transit with no chief scientist.	GENAVIR BREST, Ifremer
<a href="#">TR_SQPBRE</a>	<i>Thalia</i>	22 09 2017	24 09 2017	Atlantic Ocean	Transit with no chief scientist.	GENAVIR BREST, Ifremer
<a href="#">UPCAST</a>	<i>Téthys II</i>	17 08 2017	20 08 2017	Western Mediterranean basin	PAIRAUD Ivane	LERPAC - TOULON, Ifremer
<a href="#">VIDEO GALION 2017</a>	<i>Unknown</i>	09 04 2017	13 04 2017	Western Mediterranean basin	VAZ Sandrine	IFREMER SETE STATION, Ifremer
<a href="#">VIDEOCOR1</a>	<i>L'Europe</i>	27 04 2017	10 05 2017	Western Mediterranean basin	FABRI Marie-Claire	LERPAC - TOULON, Ifremer
<a href="#">VIDEOCOR1-02</a>	<i>L'Europe</i>	28 09 2017	02 10 2017	Western Mediterranean basin	FABRI Marie-Claire	LERPAC - TOULON, Ifremer
<a href="#">VOLT 2 RECUP</a>	<i>Thalassa</i>	14 04 2017	17 04 2017	Bay of Biscay	SILVA JACINTO Ricardo	GM- MARINE GEOSCIENCES, Ifremer
<a href="#">VT 152 / OHA-SIS-BIO-9</a>	<i>Marion Dufresne</i>	04 01 2017	10 02 2017	Indian Ocean	ROYER Jean-Yves	MARINE OBSERVATORY OSU-IUEM) University of Western Brittany (UBO)
<a href="#">VT 153 / OISO-27</a>	<i>Marion Dufresne</i>	04 01 2017	10 02 2017	Indian Ocean	METZL Nicolas	OCEANOGRAPHY AND CLIMATE LABORATORY (LOCEAN), UMR 7159, University of Paris VI - UPMC
<a href="#">VT 154 / THEMISTO</a>	<i>Marion Dufresne</i>	04 01 2017	10 02 2017	Indian Ocean	COTTE Cédric	OCEANOGRAPHY AND CLIMATE LABORATORY (LOCEAN), UMR 7159, University of Paris VI - UPMC
<a href="#">VT 155 / REPCCOAI</a>	<i>Marion Dufresne</i>	04 01 2017	10 02 2017	Indian Ocean	TOULLEC Jean-Yves	STATION BIOLOGIQUE DE ROSCOFF (SBR), SORBONNE UNIVERSITÉS, UPMC UNIV PARIS 06 ET CNRS, CNRS
<a href="#">VT 156 / SOCLIM RECUP</a>	<i>Marion Dufresne</i>	22 03 2017	21 04 2017	Antarctic Ocean	BLAIN Stéphane	OCEANOLOGICAL OBSERVATORY OF BANYULS (OSU-OOB), University of Paris VI - UPMC
<a href="#">WATER</a>	<i>Téthys II</i>	25 07 2017	04 08 2017	Mediterranean	CHANIER Frank	OCEANOLOGY AND GEOSCIENCES LABORATORY - UMR 8187 LOG, CNRS

#### 4.5 CRUISES NOT RECEIVED

In 2017, 5 cruises could not be included in the marine research cruise catalogue. No information or summary for these cruises was sent to SISMER, in spite of numerous requests to this end.

Nom	Vessel	Chief scientist	Laboratory	Organization	Start	End
MAGOFOND4 LEG1	<i>Pourquoi Pas ?</i>	DYMENT Jérôme	IPGP (Institute of earth physics in Paris)	IPGP	16/01/2017	17/02/2017
MD 207 / MAGOFOND4 LEG2	<i>Marion Dufresne</i>	DYMENT Jérôme	IPGP (Institute of earth physics in Paris)	IPGP	20/02/2017	19/03/2017
POST-BLANCO LEG1	<i>Alis</i>	BENZONI Francesca	UMR ENTROPIE	IRD	21/02/2017	14/03/2017
POST-BLANCO LEG2	<i>Alis</i>	BENZONI Francesca	UMR ENTROPIE	IRD	16/04/2017	01/05/2017
MGTS 2017	<i>Alis</i>	BLANC Gérard	ENVIRONNEMENTS ET PALÉOENVIRONNEMENTS OCÉANIQUES (EPOC)	University of Bordeaux.	16/06/2017	24/06/2017

Therefore, no data acquired during this cruise can be accessed via the databases managed by SISMER, and no DOI will be attributed to this cruise.



## 5 Contacts

IFREMER / SISMER

Marine scientific information systems

Brest Center

CS 10070 – 29280 Plouzané

France

**Tel. (33) 2 98 22 49 16**

**Fax (33) 2 98 22 46 44**

E-mail: [csr\\_sismer@ifremer.fr](mailto:csr_sismer@ifremer.fr)

[sismer@ifremer.fr](mailto:sismer@ifremer.fr)

Website: <http://data.ifremer.fr/SISMER>

Nolwenn DANIoux

IDM/SISMER

**Tel. (33) 2 98 22 44 04**

E-mail: [Nolwenn.Danioux@ifremer.fr](mailto:Nolwenn.Danioux@ifremer.fr)

**Published by IFREMER/IDM/SISMER**

**ISSN 1967-5542**

**@Copyright IFREMER**

## 6 Acronyms

<b>ADCP</b>	Acoustic Doppler Current Profiler
<b>BRGM</b>	Bureau of geology and mining research
<b>BSH/DOD</b>	German Federal Maritime and Hydrographic Agency/Oceanographic Data Centre
<b>ICES</b>	International Council for the Exploration of the Sea
<b>Cnexo</b>	National center for ocean exploitation
<b>CNFC</b>	National coastal fleet commission
<b>CNFH</b>	National ocean-going fleet commission
<b>CNRS</b>	National centre for scientific research
<b>CODIR</b>	Steering committee
<b>COSS</b>	Strategic and scientific orientation council
<b>CSR</b>	Cruise Summary Report (formerly called ROSCOP)
<b>CTD</b>	Conductivity Temperature Depth
<b>DFO</b>	Oceanographic fleet division
<b>DOI</b>	Digital Object Identifier
<b>GENAVIR</b>	Research vessel management (IFREMER group)
<b>ICRAM</b>	Italian Central institute for applied marine research
<b>IEO</b>	Instituto Espanol de Oceanografia
<b>IFREMER</b>	French research institute for exploitation of the sea (formerly ISTPM-CNEXO)
<b>IFRTP</b>	French polar research and technology institute
<b>INSU</b>	National institute for sciences of the universe
<b>IODE</b>	International Oceanographic Data and Information Exchange
<b>IPEV</b>	Paul Emile Victor French polar institute
<b>IRD</b>	French research institute for cooperative development (formerly ORSTOM)
<b>IRSI</b>	Research and information system infrastructures
<b>ISI</b>	Information systems engineering
<b>ISTPM</b>	Scientific and technical institute for marine fisheries
<b>MNHN</b>	National museum of natural history
<b>DEM</b>	Digital Elevation Model
<b>RV</b>	Research Vessel
<b>NODC</b>	National Oceanographic Data Center
<b>OFEG</b>	Ocean Facilities Exchange Group
<b>ROV</b>	Remote Operated Vehicle
<b>SGC</b>	Cruise management system
<b>SHOM</b>	French navy hydrographic and oceanographic service
<b>SISMER</b>	Marine scientific information systems
<b>TAAF</b>	French southern and Antarctic lands
<b>TGIR</b>	Very large Research Infrastructure
<b>JSU</b>	Joint service unit
<b>UNESCO</b>	United Nations Educational, Scientific and Cultural Organization
<b>XBT</b>	EXpendable BathyThermograph