

CORRIGENDUM / RECTIFICATIF

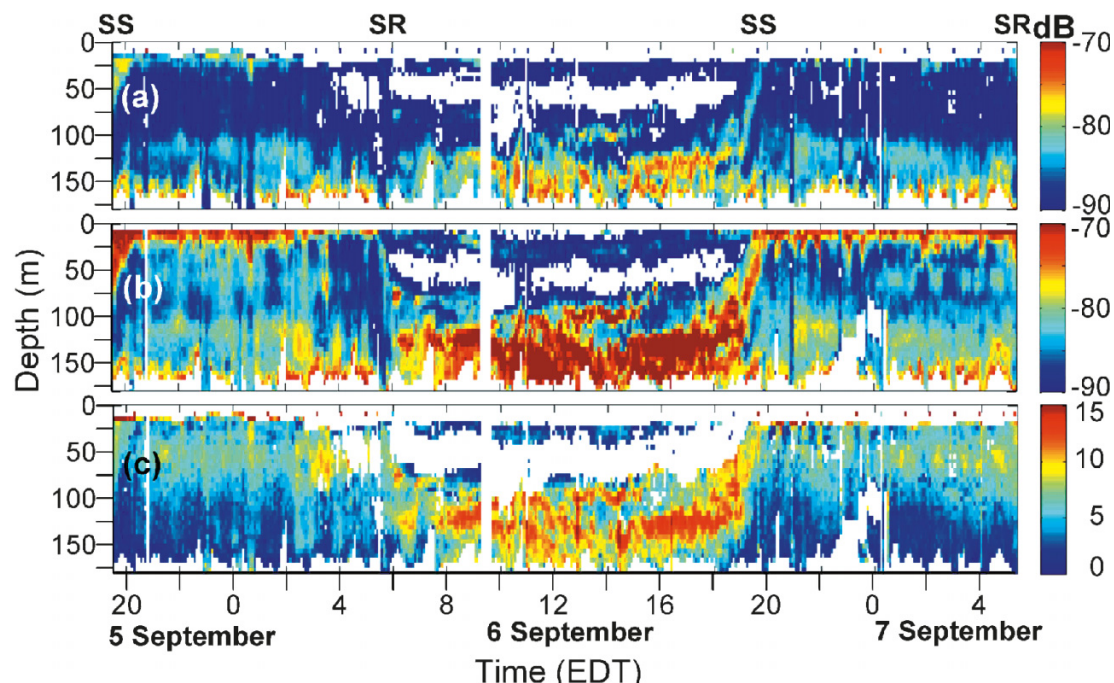
Corrigendum: Krill diel vertical migration fine dynamics, nocturnal overturns, and their roles for aggregation in stratified flows

M. Sourisseau, Y. Simard, and F.J. Saucier

Ref.: Can. J. Fish. Aquat. Sci. 65: 574–587 (2008).

The following figure corrects a 5 dB palette error in Figs. 5b–5c (p. 581).

Fig. 5. Volume backscattering strength (S_v , dB re 1 m^{-1}) from 5 to 7 September 2003 at (a) 38 kHz and (b) 120 kHz from the SIMRAD EK60 echosounder. Vertical and horizontal resolutions are 2 m and 5 min, respectively. (c) The S_v difference at the two frequencies ($S_{v,120} - S_{v,38}$) was calculated to classify the echoes except for blanked areas with insignificant backscatter and low signal to noise ratios ($S_{v,38} < -95 \text{ dB}$ and $S_{v,120} < -90 \text{ dB}$). SS, sunset; SR, sunrise. See Fig. 2 caption for note regarding expression of time.



Received 23 January 2009. Accepted 29 January 2009. Published on the NRC Research Press Web site at cjfas.nrc.ca on 10 March 2009. J21014

M. Sourisseau^{1,2} and **Y. Simard**. Institut des Sciences de la Mer, Université du Québec à Rimouski, 310 allée des Ursulines, P.O. Box 3300, Rimouski, QC G5L 3A1, Canada; Institut Maurice-Lamontagne, Fisheries and Oceans Canada, 850 route de la Mer, P.O. Box 1000, Mont-Joli, QC G5H 3Z4, Canada.

F.J. Saucier. Institut des Sciences de la Mer, Université du Québec à Rimouski, 310 allée des Ursulines, P.O. Box 3300, Rimouski, QC G5L 3A1, Canada.

¹Corresponding author (e-mail: Marc.Sourisseau@ifremer.fr).

²Present address: IFREMER, DYNECO, Centre de BREST, B.P. 70, 29280 Plouzané, France.