

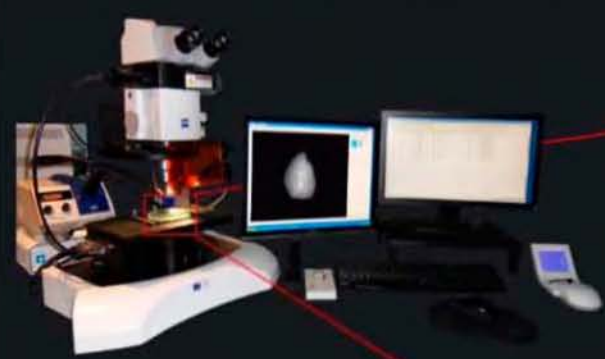
Age estimation of the megrim (*Lepidorhombus wiffiagonis*) from the Celtic Sea and the Bay of Biscay

Centre Manche-Mer du Nord - Département Halieutique
Laboratoire Ressources Halieutiques de Boulogne sur mer
Sclerochronology centre



Megrim
Lepidorhombus wiffiagonis

Megrim is a benthic species found throughout the North-east Atlantic and Western Mediterranean Sea. Sexual maturity occurs around 4 years old, which corresponds to a size of 25 cm for males and 28 for females. Longevity is estimated of 13 years.



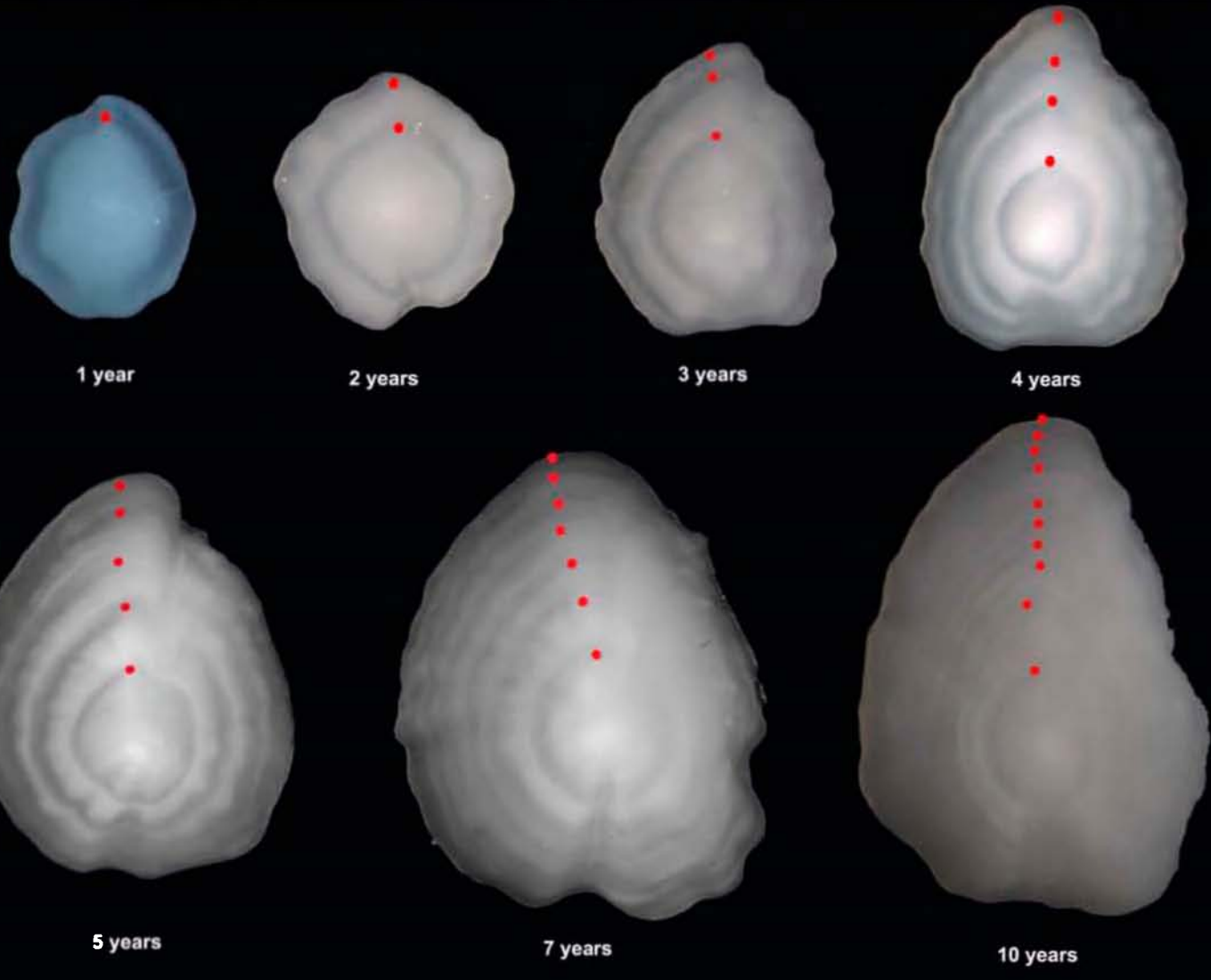
Concave and convex sides of the otolith



Growth zones correspond to mineral opaque zones, deposited in summer when food availability is important. During winters, growth slows down what is shown by translucent zones, made principally of organic matrix.

- █ Growth zone
- Translucent zone
- Opaque zone
- Nucleus

The otolith is immersed in water and read in its entirety under microscope using reflected light, which allows the observation of the *nucleus* and growth areas.



● Age estimations of megrim caught during the first quarter of the year