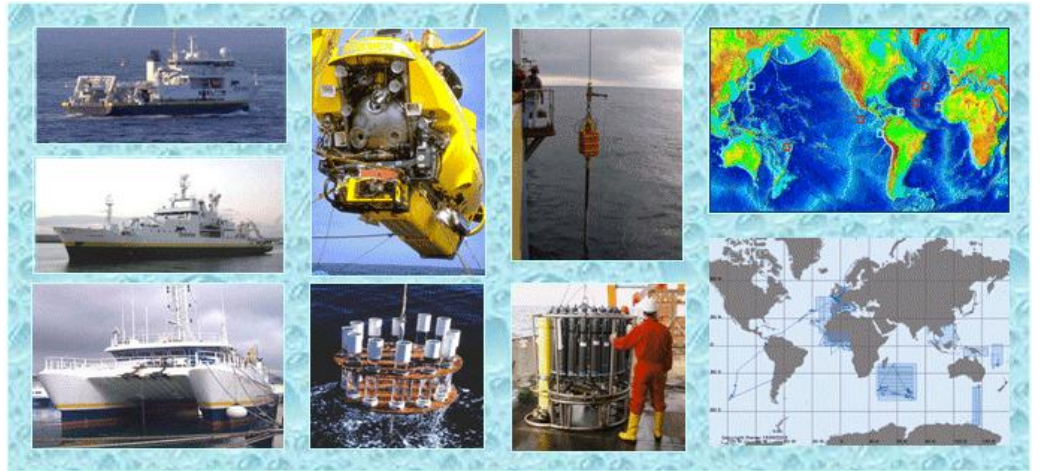


2011 French oceanographic cruises report



Contents

1. SISMER	5
1.1. Its role.....	5
1.2. Stakes	6
2. Ocean research cruises	7
2.1. Background	7
2.2. French cruise definition	7
2.3. Inventory of cruise informations	7
2.4. Chief scientists' rules and duties	8
2.5. Transmission of summaries	8
3. Oceanographic cruise data	9
4. Access to cruises and data	10
5. Ocean-going and coastal activity reports	11
6. Joint Service Unit (JSU) - French oceanographic fleet	11
7. National assessment organizations	12
8. French oceanographic cruises in 2011	13
8.1. Contracting organizations.....	13
8.2. 2011 oceanographic fleet.....	13
8.2.1. IFREMER fleet.....	14
8.2.2. CNRS/INSU fleet.....	16
8.2.3. IPEV fleet.....	17
8.2.4. IRD fleet.....	18
8.2.5. SHOM fleet.....	18
8.3. Cruises by RV <i>L'Atalante</i>	19
8.4. Cruises by <i>Suroît</i>	20
8.5. Cruises by <i>Pourquoi pas?</i>	21
8.6. Cruises by RV <i>Thalassa</i>	22
8.7. Cruises by <i>Gwen Drez</i>	23
8.8. Cruises by <i>L'Europe</i>	24
8.9. Cruises by RV <i>Thalia</i>	25
8.10. Cruises by RV <i>l'Haliotis</i>	27
8.11. Cruises by RV <i>Côtes de la Manche</i>	28
8.12. Cruises by RV <i>Téthys II</i>	29
8.13. Cruises by RV <i>La Curieuse</i>	30
8.14. Cruises by <i>Marion Dufresne</i>	31
8.15. Cruises by <i>L'Astrolabe</i>	32
8.16. Cruises by <i>L'Alis</i>	33
8.17. Cruises by <i>Beautemps-Beaupré</i>	34
9. Statistics	35
9.1. Background.....	35
9.2. In 2011.....	36
9.2.1. Breakdown of cruises by main contractor (shipowner).....	36
9.2.2. Breakdown of cruises by client organization.....	36

9.2.3. List of 2011 cruises	37
9.2.4. List of cruises with no summary	52
<hr/>	
10. Glossary	53
11. Acknowledgements.....	53
12. Contacts	54

Introduction

This document reports on the French oceanographic cruises conducted in 2011.

It provides a detailed description of SISMER'S role in archiving cruise information and oceanographic data. It also gives an overall view of the vessels of the French ocean research fleet and how they are used and provides dynamic access to cruise information through the Nautilus web portal (http://www.ifremer.fr/sismer/index_FR.htm).

This report has been drawn up by IFREMER, and more specifically by the SISMER department in charge of managing cruise data and summaries.

The electronic version of this document is available at the following address: http://www.ifremer.fr/sismer/FR/doc_FR.htm. Clicking on the hypertext links gives direct access to the cruise descriptions.

The various reports for French oceanographic cruises are also available via IFREMER'S institutional archive, Archimer, whose address follows: <http://archimer.ifremer.fr/>.

1. SISMER

1.1. Its role

SISMER (Marine scientific information systemsMER) is an IFREMER department, located at its center in Brest, France. It is part of the "Marine and Digital Infrastructures" department of the IDM (Information systems and Marine Data) unit.

It is France's national coordinator for international data exchanges in the framework of UNESCO's Intergovernmental Oceanographic Commission (IOC) « International Oceanographic Data and Information Exchange (IODE) » program.

To meet the needs of the scientific community, it both develops, working with the ISI (Information systems engineering) service in the IDM (IT and marine data) department, and uses marine-related information systems and databases. The service manages and archives the data collected during French oceanographic cruises and keeps an inventory of them. It also manages real-time data from various operational oceanographic systems (Coriolis database).

SISMER manages the French national oceanographic database, which under very specific rules protects, standardizes and disseminates, data from various fields of marine science, like hydrology, marine biochemistry, currentometry, gravimetry, magnetometry, seismics, bathymetry, acoustic imaging, physical-chemical seabed characteristics and the deep sea environment. The data come from French research laboratories taking part in surveys at sea.

It archives the data, along with information about its source, the experimental conditions and the collection methodology (metadata). It applies quality control inspections in accordance with international standards and distributes the data and metadata using standardized formats.

It makes an active contribution to French, European and international working groups devoted to standardization and exchange of data. It coordinates the SeaDataNet pan-European network marine data centres which aims to link the main European oceanographic data centers and thus give users access on line to distributed databases through a single portal..

It is committed to compliance with the rules defined for data distribution and will not disseminate any data which are confidential in nature.

1.2. Stakes

It has been proved that without permanent archiving, done following well established standards, 30% of the acquired data is lost by the end of 10 years. The cost of using facilities for data acquisition at sea is so high that it is essential to implement the resources and means necessary for good data preservation.

SISMER is in charge of collecting summaries for all the French ocean research cruises which have taken place aboard French vessels or in cooperation with foreign vessels.

These summaries are made known to the French and worldwide scientific community and are vital for making enhanced use of the data. They are an important component of international oceanographic data exchanges. In return, they make it easier to create global datasets that are accessible to everyone. It is both the duty and in the interest of everyone to contribute to them.

No information on surveys or cruises classified as "confidential defense" is held in SISMER'S vessel database. However, in order to keep a lasting record of data from other confidential cruises (commercial contracts, surveys made under contract, etc.), they are archived but not distributed.

Data which is incorrectly archived or not archived will ultimately be lost for good.

Cruise data which is incorrectly or not referenced (Roscop sheet incorrectly or not completed) are inaccessible and therefore ultimately lost.

The value of data acquired at sea, in both scientific and financial terms represents a legacy which must be preserved.

2. Ocean research cruises

2.1. Background

SISMER has catalogued nearly 6,189 French ocean research cruises (strictly speaking, not including trial cruises or those of a confidential nature) and over 470 simple or survey transits, since 1913.

In the past, cruises were generally conducted by the former Scientific and technical fisheries institute (ISTPM) and by the French Navy's hydrographic and oceanographic service (FRENCH NAVY/SHOM). Later, other organizations like the CNRS, IRD (formerly ORSTOM), IPEV (formerly IFRTIP), the National museum of natural history (MNHN), CNEXO (National center for exploitation of the oceans) and then IFREMER (created by merging ISTPM-CNEXO) greatly contributed to the efforts to collect measurements at sea, using their own facilities. Currently, the growing number of European projects and international programs for ship time sharing mean that a number of French cruises are made aboard foreign vessels.

2.2. French cruise definition

"French cruise" means a cruise for which the home organization of the client (and therefore of the chief scientist) is French. Any cruise classified « Confidential Defence » or considered as such is not listed in this document and thus not counted. The document also takes account of simple transits or survey transits as well as sea trial cruises.

2.3. Inventory of cruise informations

Taking inventory of cruises is done in several steps:

- Listing the scheduled ocean cruise programs. This is done with the help of the people in charge of ship management;
- At the end of each cruise, the heads of mission are requested to send a summary report to SISMER. A template (called a Roscop sheet) is available on the SISMER website found here:
<http://www.ifremer.fr/sismer/FR/catal/campagne/r11.htm>.

For IFREMER'S vessels, this cruise summary corresponds to « Form n°4 » (ocean-going vessels) and « Form n°5 » (coastal vessels) of the DMON reports.N. The chief scientist sends it directly to SISMER.

This action is taken in compliance with the procedure in effect aboard IFREMER vessels (<http://www.ifremer.fr/flotte/index.php>) and with the "Vade-Mecum des utilisateurs des navires océanographiques côtiers " (for inshore RV users) of INSU and IFREMER <http://cir.dt.insu.cnrs.fr/docfiches.html>.

- The information thus gathered is then archived in the SISMER database. Each cruise is given a track number (single identifier).

2.4. Chief scientists' rules and duties

The chief scientists have rights and obligations in terms of archiving and disseminating the data acquired aboard IFREMER vessels.

Two documents can be consulted on line.

One focuses on the mandate of of chief scientists aboard IFREMER research vessels (remit and responsibilities):

<http://flotte.ifremer.fr/flotte/Campagnes/Campagnes-mode-d-emploi/Reglementations/Mandat-chef-de-mission>

The other concerns the rights and obligations for archiving and disseminating data acquired aboard IFREMER'S vessels:

<http://flotte.ifremer.fr/flotte/Campagnes/Campagnes-mode-d-emploi/Reglementations/Donnees/Regles-donnees-navires>

2.5. Transmission of summaries

In the framework of the European SeaDataNet programme (<http://www.seadatanet.org/>), the cruise summaries are sent to BSH/DOD (German data center) which ensures that the European CSRs (Cruise Summary Reports) are disseminated worldwide, particularly to ICES/CIEM (International Council for the Exploration of the Sea).

3. Oceanographic cruise data

Along with the cruise inventory, data from various fields of ocean research are also archived. These include: marine physics, chemistry, biology, geology and geophysics, as well as exploratory fisheries and technology.

In accordance with the rules in effect, SISMER archives and disseminates the data collected aboard French research vessels and observation systems.

The data are transmitted by one of the following patterns:

1) Sent directly to SISMER at the end of the mission:

- Raw data acquired using French facilities managed by IFREMER (major facilities),
- Single- and multi-beam bathymetric data,
- Gravimetry data,
- Magnetometry data
- Seismic reflection data,
- Sonar imaging data (sidescan sonars, multibeam echo sounders),
- Navigational data,
- Shipboard ADCP data from RV *L'Atalante*, *Thalassa*, *Le Suroît*, *Beautemps-Beaupré*, *Pourquoi Pas?*.

2) Data requiring laboratory processing:

These data are transmitted once measurements have been validated or samples analyzed:

- Marine biochemical and physical data collected at hydrological stations (CTD and bottle casts),
- Eulerian or Lagrangian time series (currentometry, temperature, deep sea tide gauges),
- Geological samples and analyses.

- Data transmitted in real time:

3) When the ship is so equipped, data can be sent directly in real time for the needs of modeling experts in the framework of operational oceanographic projects:

- CTD and XBT from some cruises,
- Shipboard ADCP from the *Beautemps-Beaupré* and *Pourquoi Pas ?* vessels.

- Data compilations:

SISMER manages and distributes an archive of data and data compilation products: theme-based databases, digital terrain models (MNT), maps and atlases which are created in partnership with other scientific centers and laboratories, in the framework of French, European and international programs: :

- Physical and biochemical data from European projects: MyOcean, SeaDataNet, MFSTEP, MTP II-MATER, MEDAR/MEDATLAS and the international ARGO/CORIOLIS and GODAR/World Ocean Atlas projects,
- Marine geophysics data: EUROSEISMIC catalogue, EXTRAPLAC database, DORSALES database.

4. Access to cruises and data

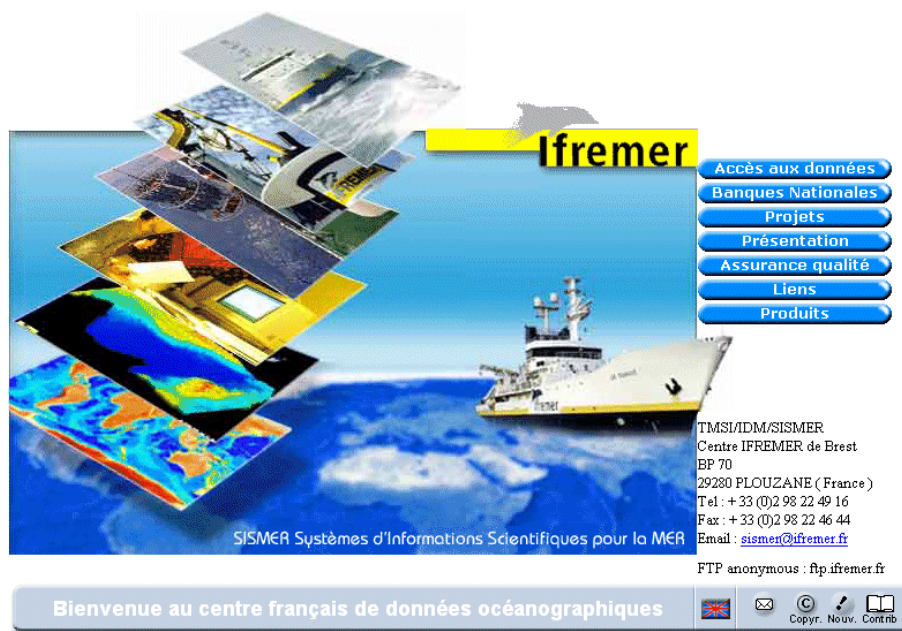
The full inventory of *oceanographic surveys* in the French database and *their related data* contains information covering almost a century of measurements taken at sea. It can be accessed at the following URL:

http://www.ifremer.fr/sismer/index_FR.htm en cliquant sur :

"Accès aux données" (access to data)

then - "Campagnes à la mer" (sea cruises), to consult the cruises,

or - "Données in situ" (in situ data) to access the data.



This portal provides cartographic and interactive consultation and search functions for cruise data. It also enables data to be retrieved or ordered on line using the form on the server, depending on the degree of confidential and the file size (500 Mb) permitting.

An accessible database on POGO's international server at <http://www.pogo-oceancruises.org/> gives the scheduled cruises (more than 350 cruises) of research vessels over 60 m LOA for ten countries.

5. Ocean-going and coastal activity reports

The Department of naval resources and operations (DMON) provides a report on the offshore and inshore activity of the fleet belonging to IFREMER and our partners. It is available on the following website pages:

<http://flotte.ifremer.fr/flotte/Campagnes/Calendrier-de-la-flotte/Bilans-hauturiers>

<http://flotte.ifremer.fr/flotte/Campagnes/Calendrier-de-la-flotte/Bilan-calendriers-cotiers>

6. Joint Service Unit (JSU) - French oceanographic fleet

The "French oceanographic fleet" Joint Service Unit (JSU) was created on 2 March 2011 for an initial four-year period.

It is supported by four research operators. They are the National center for scientific research (CNRS), the French research institute for exploitation of the sea (IFREMER), the French polar institute "Paul Emile Victor" (IPEV) and the Research institute for cooperative development (IRD).

The JSU's assigned objective is to improve the management of the French ocean research fleet, which was until now distributed amongst these four operators.

The setting up of this Joint Service Unit with unified governance should enable the public authorities to have an overarching view of this Major Research Infrastructure (MRI) in the framework of supervising public policies and clear the way for a comprehensive strategic vision which is currently lacking.

To meet this objective, **three missions** have been defined:

- developing integrated scheduling of vessels and large-scale equipment,
- prepare and coordinate a plan for these fleet's evolution,
- coordinate investment policies.

For further information, see: http://wwz.ifremer.fr/institut_eng/Documental-resources/Medias/Communiqués-de-presse/UMS-Flotte-oceanographique-francaise

7. National assessment organizations

The French oceanographic fleet is managed by the following four organizations: **IFREMER**, **CNRS**, **IPEV** and **IRD**.

In March 2011, these organizations created the Joint Service Unit – French Oceanographic Fleet (UMS-FOF) whose objective is to streamline the management of this fleet.

In terms of scheduling for seagoing facilities, the JSU French Oceanographic Fleet relies, amongst others, on the assessments made by two commissions, following the national call for ocean-going and coastal cruises. They are the:

- **National ocean-going fleet commission (CNFH)**, for cruise projects requiring ocean research vessels from the French offshore oceanographic fleet, and
- **National coastal fleet commission (CNFH)**, for cruise projects requiring ocean research vessels from the French inshore oceanographic fleet.

Their role is also to:

- assess, a posteriori, the results from coastal oceanographic cruises performed using French oceanographic resources;
- respond to requests from the Scientific and strategic orientations committee (COSS) to take part in drawing up advice concerning the sea-going resources for oceanographic research.

For further information, see:

<http://cir.dt.insu.cnrs.fr/index.html>

<http://flotte.ifremer.fr/flotte/Campagnes/Campagnes-mode-d-emploi/Campagnes-Evaluations/Commissions-d-evaluation-des-campagnes-a-la-mer>

8. French oceanographic cruises in 2011

8.1. Contracting organizations

French ocean research vessels are managed by the following organizations:

- CNRS/INSU (French national scientific research center / national institute for sciences of the universe),
- IFREMER (French research institute for exploitation of the sea),
- IPEV (French polar institute – Paul Emile Victor),
- IRD (French research institute for cooperative development, formerly ORSTOM),
- FRENCH NAVY/SHOM (French Navy's hydrographic and oceanographic service).

Ship time exchange agreements have been signed by IFREMER and German, British, Spanish, Dutch and Norwegian vessel operators and oceanographic teams. This enables cruises to be made aboard vessels from these countries.

8.2. 2011 oceanographic fleet

The 2011 cruises were carried out aboard 8 ocean-going research vessels, 7 inshore research vessels and two underwater vehicles (NAUTILE and ROV VICTOR 6000).

The website <http://www.ifremer.fr/flotte/index.php> gives a detailed description of the IFREMER fleet.

The following tables give some of the 2011 fleet's characteristics.

8.2.1. IFREMER fleet




Ships	Specifications
 <p data-bbox="331 651 395 667">ifremer</p> <p data-bbox="549 663 687 689"><i>Pourquoi pas?</i></p>	<p data-bbox="963 376 1158 528">Ocean-going vessel NODC code: 35PP Call sign: FMCY Length 108 Crew: 35 Scientists: 40</p> <p data-bbox="963 557 1254 584">co-owned by SHOM - IFREMER</p>
 <p data-bbox="331 1021 395 1037">ifremer</p> <p data-bbox="564 1032 671 1059"><i>L'Atalante</i></p>	<p data-bbox="963 719 1158 871">Ocean-going vessel NODC code: 35A3 Call sign: FNCM Length 85 Crew: 17/30 Scientists: 30</p>
 <p data-bbox="331 1386 395 1402">ifremer</p> <p data-bbox="572 1397 663 1424"><i>Thalassa</i></p>	<p data-bbox="963 1084 1158 1236">Ocean-going vessel NODC code: 35HT Call sign: FNFP Length 74 Crew: 16/25 Scientists: 25</p> <p data-bbox="963 1265 1272 1292">co-owned IEO (SPAIN) - IFREMER</p>
 <p data-bbox="331 1827 395 1843">ifremer</p> <p data-bbox="572 1839 663 1865"><i>Le Suroît</i></p>	<p data-bbox="963 1462 1158 1615">Ocean-going vessel NODC code: 35LU Call sign: FZVN Length 56 Crew: 16/23 Scientists: 14</p>

Ships	Specifications
 <p data-bbox="571 705 663 734"><i>L'Europe</i></p>	<p data-bbox="962 309 1150 465"> Coastal vessel NODC code: 35EU Call sign: FKJB Length 30 Crew: 8 Scientists: 8 </p>
 <p data-bbox="587 1104 647 1126"><i>Thalia</i></p>	<p data-bbox="962 757 1150 913"> Coastal vessel NODC code: 35TC Call sign: FPSC Length 24 Crew: 6 Scientists: 6 </p>
 <p data-bbox="563 1529 671 1552"><i>Gwen Drez</i></p>	<p data-bbox="962 1149 1150 1305"> Coastal vessel NODC code: 35GD Call sign: FZYB Length 25 Crew: 7 Scientists: 5 </p>
 <p data-bbox="579 1933 655 1957"><i>Haliotis</i></p>	<p data-bbox="962 1574 1150 1731"> Coastal vessel NODC code: 35HL Call sign: FGF5958 Length 10 Crew: 2 Scientists: 1 </p>


8.2.2. CNRS/INSU fleet

Ships	Specifications
 <p data-bbox="534 728 726 757"><i>Côtés de la Manche</i></p>	<p data-bbox="981 369 1173 526"> Coastal vessel NODC code: 35C4 Call sign: FQBE Length 25 Crew: 7 Scientists: 8 </p>
 <p data-bbox="582 1108 678 1135"><i>Téthys II</i></p>	<p data-bbox="981 788 1173 945"> Coastal vessel NODC code: 35TT Call sign: FGTO Length 24 Crew: 7 Scientists: 8 </p>


8.2.3. IPEV fleet

Ships	Specifications
 <p data-bbox="533 801 699 831"><i>Marion Dufresne</i></p>	<p data-bbox="959 423 1150 577"> Ocean-going vessel NODC code: 35MF Call sign: FNIN Length 120.5 Crew: 18/29 Scientists: 60/110 </p>
 <p data-bbox="557 1370 675 1397"><i>L'Astrolabe</i></p>	<p data-bbox="959 860 1150 1014"> Ocean-going vessel NODC code: 35AC Call sign: FHZI Length 65 Crew: 12 Scientists: 48 </p>
 <p data-bbox="557 1809 675 1834"><i>La Curieuse</i></p>	<p data-bbox="959 1426 1150 1581"> Coastal vessel NODC code: 35UC Call sign: FGAK Length 26 Crew: 6 Scientists: 12 </p>

8.2.4. IRD fleet

Vessel	Specifications
	<p> Ocean-going vessel NODC code: 35AY Call sign: FHQB Length 28 Crew: 12 Scientists: 6 </p>
<p><i>Alis</i></p>	

8.2.5. SHOM fleet

Vessel	Specifications
	<p> Ocean-going vessel NODC code: 35B5 Call sign: FABB Length 80 Crew: 26 Scientists: 25 </p> <p>co-owned by SHOM - IFREMER</p>
<p><i>Beautemps-Beaupré</i></p>	

8.3. Cruises by RV *L'Atalante*

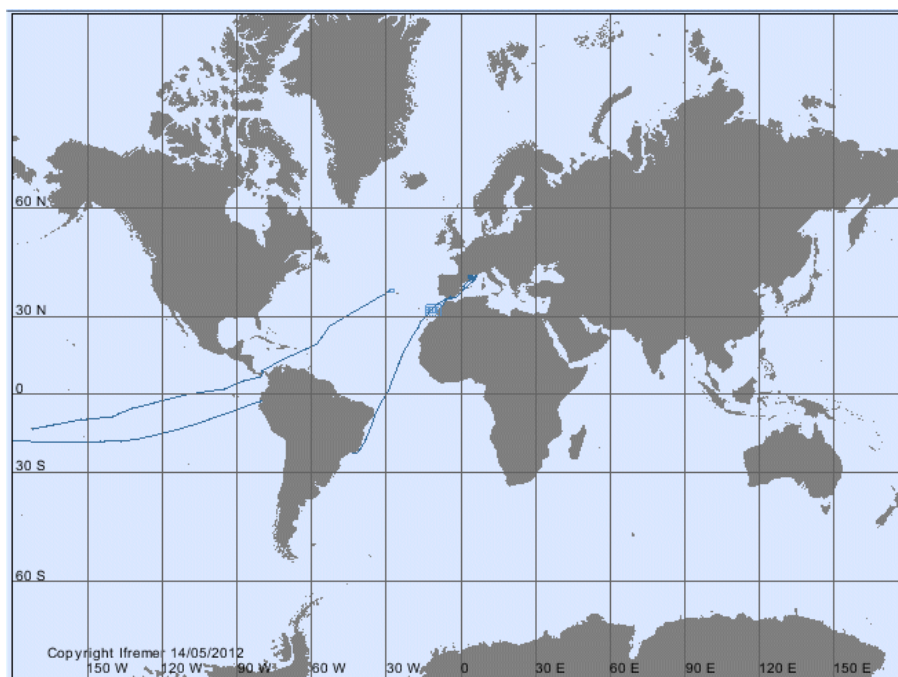


Figure 1 – Tracks of 13 cruises and legs in transit by *L'Atalante* in 2011

TR_SVAG (Transit)

From 20-12-2011 to 12-01-2012

TR_LHAAPI (Transit)

From 22-09-2011 to 29-10-2011

ESSNAUT 11

NIVAGGIOLI Jean-Michel

From 26-07-2011 to 12-08-2011

TR_CASLS (Transit)

From 12-06-2011 to 16-06-2011

MIRROR2

REICHERT Christian

From 02-06-2011 to 11-06-2011

MIRROR1

KLINGELHOEFER Frauke

ASLANIAN Daniel

From 04-05-2011 to 29-05-2011

TV_TLNCAS (Transit)

From 27-04-2011 to 02-05-2011

AFFSISM_SERCEL_LEG3

CLEC'H Didier

From 13-04-2011 to 21-04-2011

AFFSISM_SERCEL_LEG2

CLEC'H Didier

From 07-04-2011 to 12-04-2011

AFFSISM_SERCEL_LEG1

CLEC'H Didier

From 30-03-2011 to 07-04-2011

CASCADE

DURRIEU de MADRON Xavier

From 01-03-2011 to 13-03-2011

TVACOUS

ARZELIES Patrick

From 20-02-2011 to 24-02-2011

TR_RIOMAL (Transit)

From 02-02-2011 to 20-02-2011

8.4. Cruises by *Suroît*

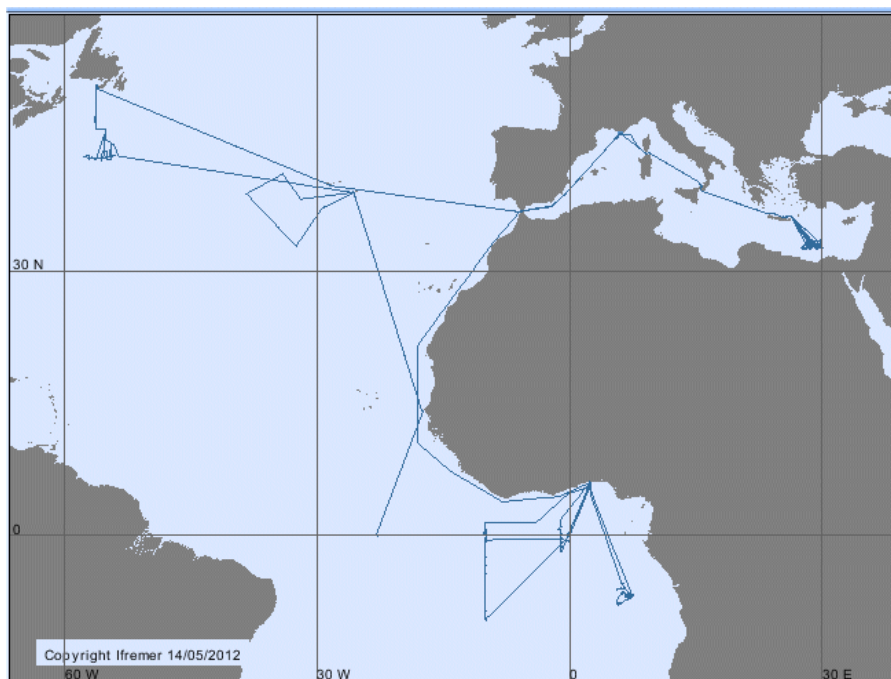


Figure 2 — Tracks of 15 cruises and legs in transit by *Suroît* in 2011

TR_HERLS (Transit)

From 25-10-2011 to 29-10-2011

APINIL LEG3

MIGEON Sébastien

From 17-10-2011 to 25-10-2011

APINIL LEG2

MIGEON Sébastien

From 01-10-2011 to 16-10-2011

APINIL LEG1

MIGEON Sébastien

From 16-09-2011 to 29-10-2011

TR_LSHER (Transit)

From 11-09-2011 to 15-09-2011

TR_LHALS (Transit)

From 30-07-2011 to 06-08-2011

TR_SPMLHA (Transit)

From 24-07-2011 to 29-07-2011

SPMPLAC

ROEST Walter R.

From 04-07-2011 to 22-07-2011

HYDROBS-MOMAR 2011

PERROT Julie

From 24-06-2011 to 03-07-2011

TR_DKPDA (Transit)

From 16-06-2011 to 22-06-2011

PIRATA-FR21

BOURLES Bernard

GRELET Jacques

From 01-05-2011 to 16-06-2011

REPREZAI_LEG2

DROZ Laurence

MARSSET Tania

From 11-04-2011 to 29-04-2011

TR_LSCOT (Transit)

From 24-03-2011 to 09-04-2011

ESS_MVP200

FLOC'H Henri

From 20-03-2011 to 23-03-2011

ESSMF

OPDERBECKE Jan

From 13-03-2011 to 20-03-2011

8.5. Cruises by *Pourquoi pas?*

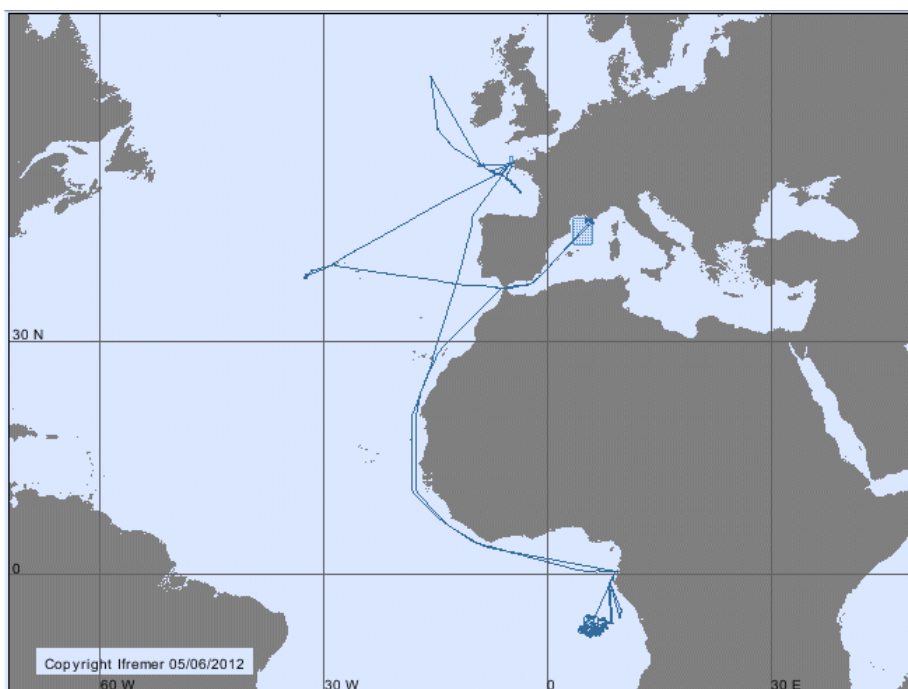


Figure 3 – Tracks of 15 cruises and legs in transit by *Pourquoi pas?* in 2011

CONGOLOBE

RABOUILLE Christophe
From 12-12-2011 to 10-01-2012

TR_BREPGT (Transit)

From 19-10-2011 to 04-11-2011

BOBECO LEG2

ARNAUD-HAOND Sophie
GREHAN Anthony
From 24-09-2011 to 10-10-2011

BOBECO LEG1

ARNAUD-HAOND Sophie
GREHAN Anthony
From 10-09-2011 to 22-09-2011

PROTEUS_DUNES

IETA Raphaël Legouge
From 01-09-2011 to 06-09-2011

TV_ARVOR2 (Transit)

From 25-07-2011 to 30-07-2011

BIOBAZ 2011

LALLIER François
From 21-07-2011 to 23-07-2011

MOMARSAT2011

CANNAT Mathilde
BLANDIN Jérôme
SARRADIN Pierre-Marie
From 28-06-2011 to 23-07-2011

TV_ARVOR

LEBRETON Nathanaële
From 18-06-2011 to 28-06-2011

NEUTRIVIC 10

SIMEONI Patrick
From 16-06-2011 to 19-06-2011

ERATO

GUILLOU Raymond (IPETA)
From 05-05-2011 to 23-05-2011

ESSROV

SIMEONI Patrick
From 23-04-2011 to 03-05-2011

TV_MALTOU (Transit)

From 15-03-2011 to 19-03-2011

TR_LIBMAL (Transit)

From 28-02-2011 to 14-03-2011

WACS

OLU Karine
From 26-01-2011 to 25-02-2011

8.6. Cruises by RV *Thalassa*

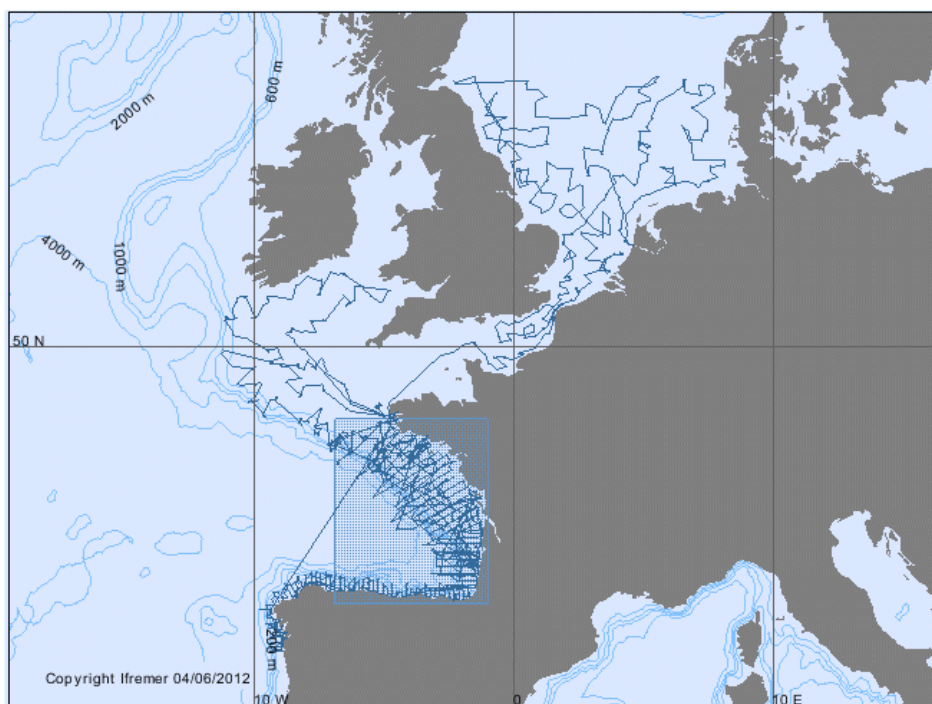


Figure 4 — Tracks of 8 cruises and legs in transit by *Thalassa* in 2011

EVHOE 2011

LEAUTE Jean-Pierre

SALAUN Michèle

PAWLOWSKI Lionel

From 17-10-2011 to 01-12-2011

PROTEUS

ICETA ROSADA

From 15-09-2011 to 12-10-2011

ESSADCP

FLOC'H Henri

From 06-09-2011 to 08-09-2011

ASPEX4

MARIE Louis

From 06-08-2011 to 15-08-2011

ESSTECH

CLEC'H Didier

From 27-07-2011 to 05-08-2011

PELGAS 2011

MASSE Jacques

DORAY Mathieu

From 25-04-2011 to 05-06-2011

TR_BREVIQ (Transit)

From 24-03-2011 to 26-03-2011

IBTS 2011

VERIN Yves

From 14-01-2011 to 13-02-2011

8.7. Cruises by *Gwen Drez*

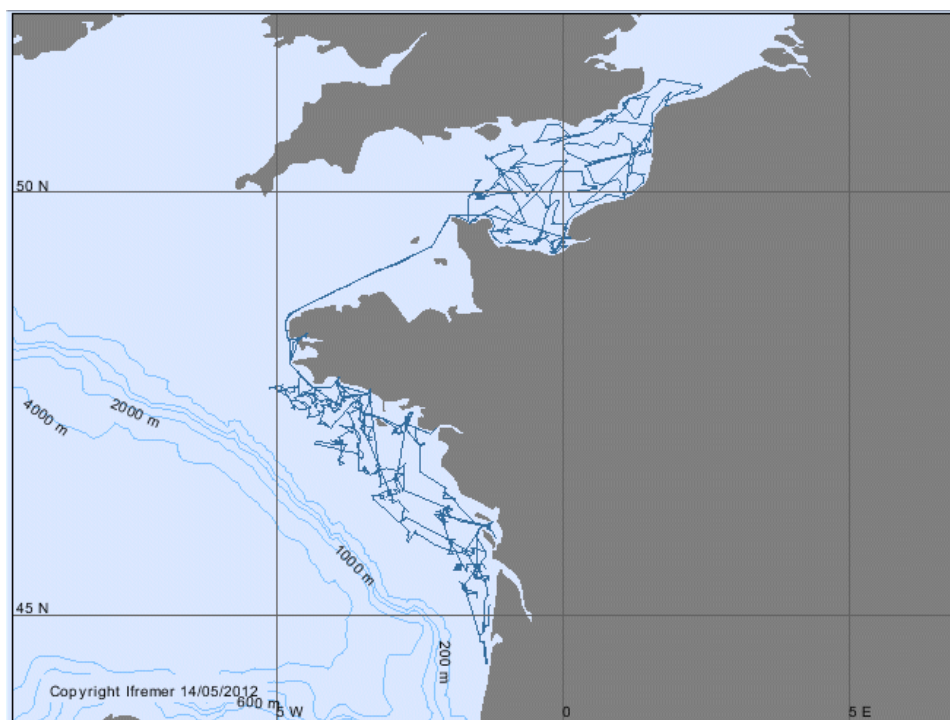


Figure 5 — Tracks of 8 cruises and legs in transit by *Gwen Drez* in 2011

ORHAGO 11

COUPEAU Yann

From 03-11-2011 to 11-12-2011

TR_CHERCONC (Transit)

From 31-10-2011 to 02-11-2011

CGFS2011

LEROY Didier

QUINQUIS Jérôme

From 01-10-2011 to 31-10-2011

TR_HAVBOU (Transit)

From 28-09-2011 to 30-09-2011

BIOCO

BURGEOT Thierry

AKCHA Farida

From 22-09-2011 to 28-09-2011

TR_BREHAV (Transit)

From 19-09-2011 to 21-09-2011

TR_CONBRE (Transit)

From 18-09-2011 to 19-09-2011

LANGOLF 2011

SALAUN Michèle

From 14-05-2011 to 30-05-2011

8.8. Cruises by *L'Europe*

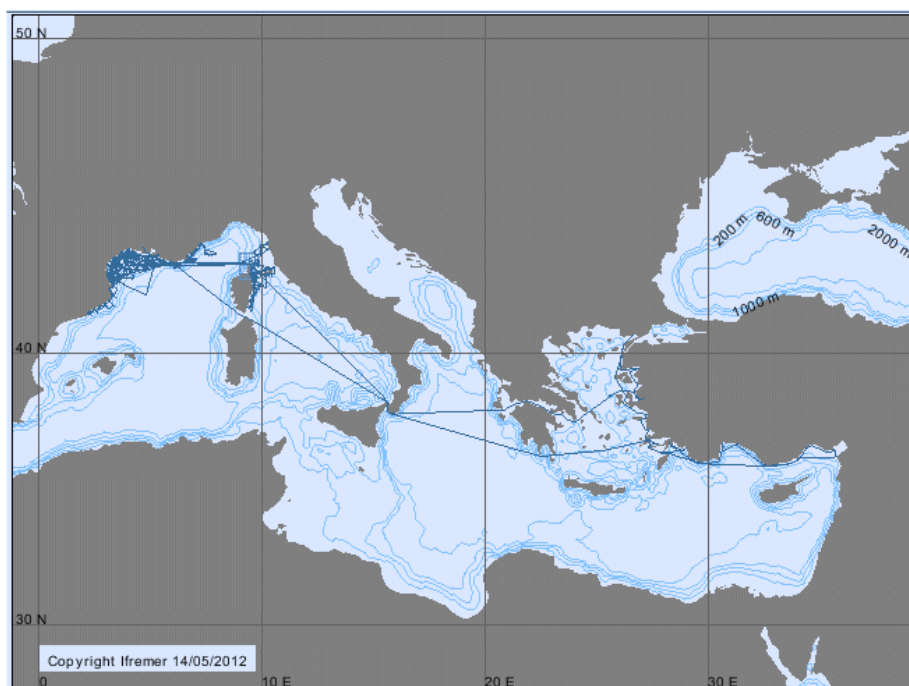


Figure 6 — Tracks of 20 cruises and legs in transit by *L'Europe* in 2011

FUI SEAEXPLORER 2

LUCCIONI Marc
From 29-11-2011 to 06-12-2011

BILLION 31

KUNESCH Stéphane
From 16-11-2011 to 24-11-2011

ESSAUV 11

OPDERBECKE Jan
From 25-10-2011 to 06-11-2011

ESSPOSIT

EDMOND Toussaint
From 14-10-2011 to 24-10-2011

TR_NICTLN (Transit)

From 12-10-2011 to 13-10-2011

STEP

APPRIOUAL Ronan
From 26-09-2011 to 11-10-2011

TR_TLNNIC (Transit)

From 25-09-2011 to 25-09-2011

TR_BASTLN (Transit)

From 20-09-2011 to 21-09-2011

CAPCORAL 2

CLABAUT Philippe
PERGENT Gérard
From 27-08-2011 to 20-09-2011

TR_TLNBAS (Transit)

From 26-08-2011 to 27-08-2011

ESS_SMF

From 05-08-2011 to 05-08-2011

PELMED 2011

BIGOT Jean-Louis
From 27-06-2011 to 30-07-2011

MEDITS 2011

JADAUD Angélique
SOUPLET Arnaud
METRAL Luisa
From 23-05-2011 to 26-06-2011

MELBA

COUDRAY Sylvain
From 30-04-2011 to 17-05-2011

COMOR-CARBORHONE 1

CARIOU Thierry
BOZEC Yann
From 24-04-2011 to 30-04-2011

COSTEAU 7

TRONCZYNSKI Jacek
From 14-04-2011 to 23-04-2011

MYTITURK

GALGANI François
From 17-03-2011 to 13-04-2011

ESSMF

OPDERBECKE Jan
From 04-03-2011 to 16-03-2011

SISOURCE

LEMOINE Mathieu
From 21-02-2011 to 03-03-2011

COSTEAU 5

TRONCZYNSKI Jacek
CHIFFOLEAU Jean-François
From 22-01-2011 to 10-02-2011

8.9. Cruises by RV *Thalia*

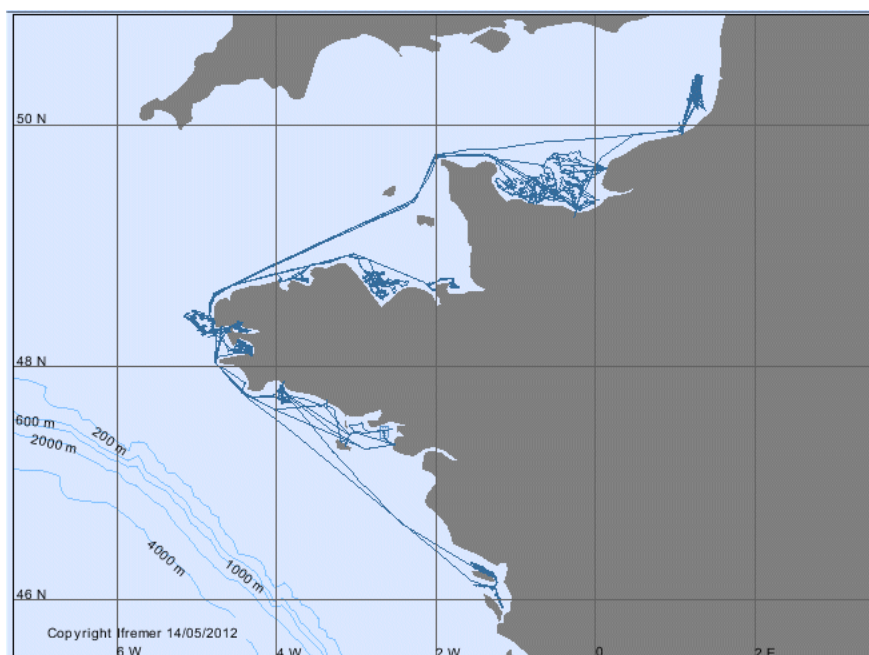


Figure 7 – Tracks of 38 cruises and legs in transit by *Thalia* in 2011

ESSTECH_11TH1

CLEC'H Didier
From 09-11-2011 to 15-11-2011

TR_DIEBRE (Transit)

From 06-11-2011 to 08-11-2011

RECOSOM 2

SIMPLET Laure
From 04-10-2011 to 05-11-2011

RECOMOR

TREDUNIT Gilles
From 02-10-2011 to 03-10-2011

TR_TURCON (Transit)

From 24-09-2011 to 24-09-2011

CARMOLIT_LEG2

QUEMENER Loïc
From 22-09-2011 to 23-09-2011

TR_BRETUR (Transit)

From 21-09-2011 to 21-09-2011

TR_SQPBRE (Transit)

From 17-09-2011 to 17-09-2011

COSB2011

HUET Jérôme
From 02-09-2011 to 17-09-2011

TR_BRESQP (Transit)

From 31-08-2011 to 31-08-2011

TR_CDBBRE (Transit)

From 27-08-2011 to 28-08-2011

COPER 12

LEAUTE Jean-Pierre
From 18-08-2011 to 26-08-2011

TR_CONCDB (Transit)

From 16-08-2011 to 17-08-2011

PLOOPS 2011

DUBOIS Stanislas
From 09-08-2011 to 16-08-2011

TR_BRECON3 (Transit)

From 28-07-2011 to 28-07-2011

TR_OUIBRE (Transit)

From 26-07-2011 to 27-07-2011

JUVECEPH 2

ROBIN Jean-Paul
From 20-07-2011 to 26-07-2011

COMOR 41

QUINQUIS Jérôme
SCHLAICH Ivan
FOUCHER Eric
From 01-07-2011 to 18-07-2011

JUVECEPH 1

ROBIN Jean-Paul
From 24-06-2011 to 30-06-2011

TR_CONOUI (Transit)

From 22-06-2011 to 23-06-2011

TR_BRECON2 (Transit)

From 16-06-2011 to 16-06-2011

THALAMACOU

EHRHOLD Axel

From 18-05-2011 to 15-06-2011

TR_CONBRE (Transit)

From 17-05-2011 to 17-05-2011

NASSE2011

MEHAULT Sonia

From 04-05-2011 to 16-05-2011

TR_MALBRE (Transit)

From 05-04-2011 to 05-04-2011

TR_BRECON1 (Transit)

From 05-04-2011 to 06-04-2011

CREPISED

LANCHARD Michel

From 26-03-2011 to 05-04-2011

TR_ROSSMA (Transit)

From 17-03-2011 to 18-03-2011

ESSZEN

APPRIOUAL Ronan

From 15-03-2011 to 17-03-2011

REBENT 2011 (MAERL&SABLES FINS)

GENTIL Franck

GRALL Jacques

From 05-03-2011 to 14-03-2011

TR_TURLOR (Transit)

From 03-03-2011 to 04-03-2011

CARMOLIT_LEG1

QUEMENER Loïc

From 28-02-2011 to 03-03-2011

TR_CONTUR (Transit)

From 27-02-2011 to 27-02-2011

TR_BRECON (Transit)

From 09-02-2011 to 09-02-2011

EDO

QUEMENER Loïc

From 28-01-2011 to 07-02-2011

ESSBASS

LOSSOUARN Hubert

From 24-01-2011 to 26-01-2011

TR_LORBRE (Transit)

From 22-01-2011 to 22-01-2011

ESSMER

From 21-01-2011 to 21-01-2011

8.10. Cruises by RV *I' Haliotis*

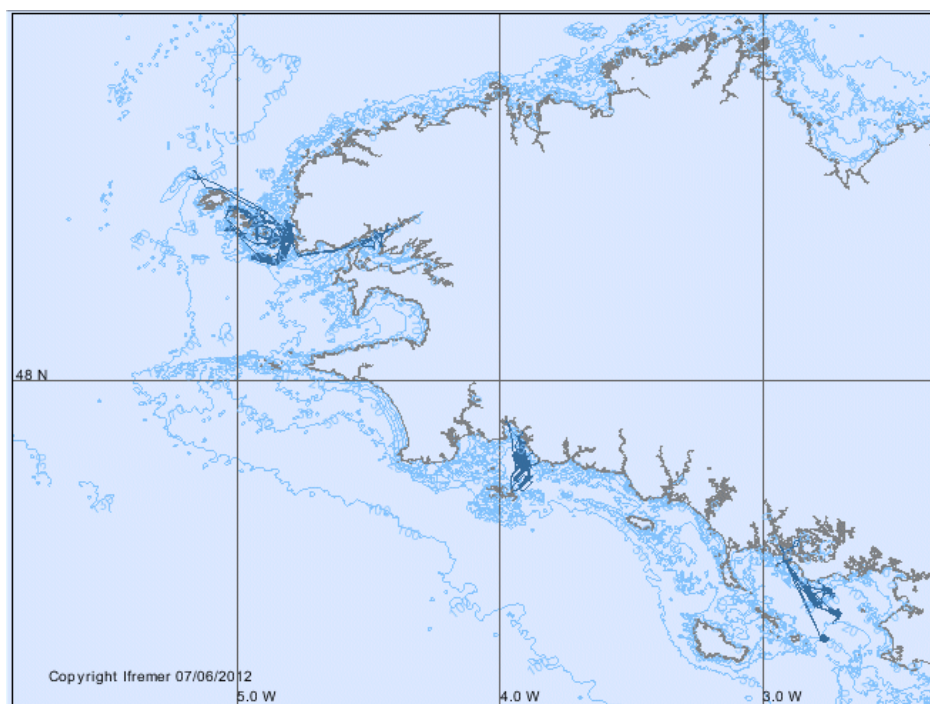


Figure 8 — Tracks of 4 cruises and legs in transit by *L'Haliotis* in 2011

HALAMACOU 2

CORDIER Céline

From 15-09-2011 to 27-09-2011

POCK&PLOOPS

BALTZER Agnès

EHRHOLD Axel

From 13-04-2011 to 03-05-2011

MEDON

AOUSTIN Yannick

CORDIER Céline

From 05-04-2011 to 09-04-2011

ESSTECH_11HA1

BISQUAY Hervé

From 23-02-2011 to 24-02-2011

8.11. Cruises by RV *Côtes de la Manche*

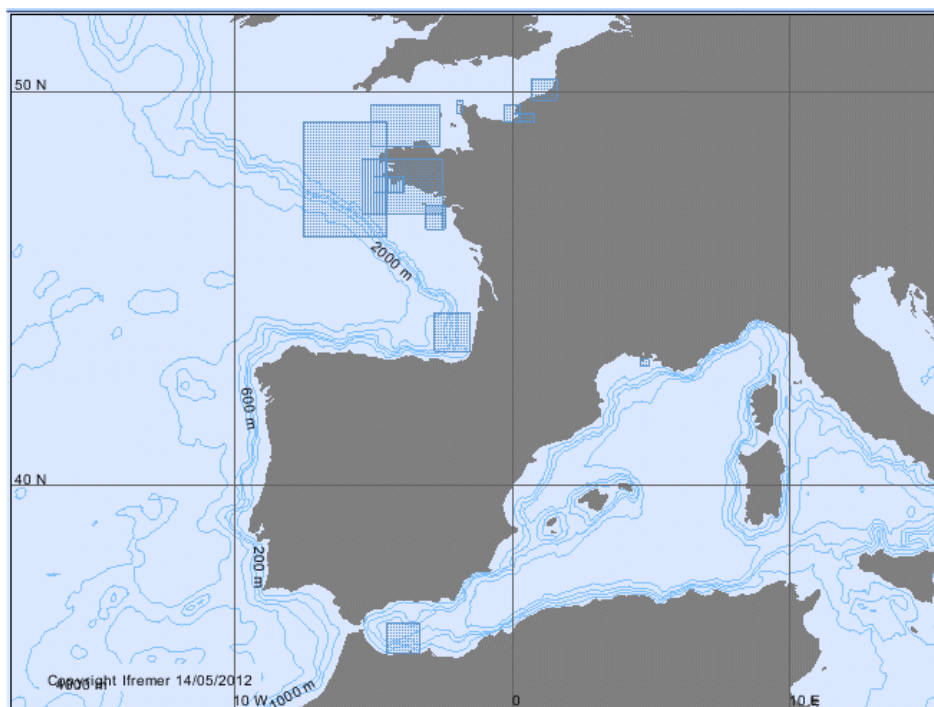


Figure 9 – Tracks of 15 cruises by *Côtes de la Manche* in 2011

IPO

COLAS Florent
From 22-11-2011 to 28-11-2011

FLUMES_LEG2

VERNEY Romaric
From 01-11-2011 to 11-11-2011

FROMVAR 2011

MARIE Louis
From 02-09-2011 to 16-09-2011

PECH10

HOWA Hélène
From 24-08-2011 to 29-08-2011

BIOMIN-2

DEFLANDRE Bruno
From 20-07-2011 to 02-08-2011

MARLBORO

D'ACREMONT Elia
From 07-07-2011 to 16-07-2011

VIDEOCHARM 2011

DAUVIN Jean Claude
TRENTEAUX Alain
From 18-06-2011 to 28-06-2011

PSEUTEC

LUNVEN Michel
From 09-06-2011 to 16-06-2011

PREVISHELF_LEG2

BASSOULLET Philippe
From 30-05-2011 to 07-06-2011

FLUMES_LEG1

VERNEY Romaric
From 15-05-2011 to 25-05-2011

DISVER2011

BAILLY DU BOIS Pascal
From 05-04-2011 to 11-04-2011

MESFLUX

BLANPAIN Olivier
From 17-03-2011 to 24-03-2011

PECTOW 11

DAUVIN Jean Claude
From 09-03-2011 to 16-03-2011

PREVISHELF_LEG1

BASSOULLET Philippe
From 17-02-2011 to 23-02-2011

PECH9

HOWA Hélène
From 01-02-2011 to 06-02-2011

8.12. Cruises by RV *Téthys II*

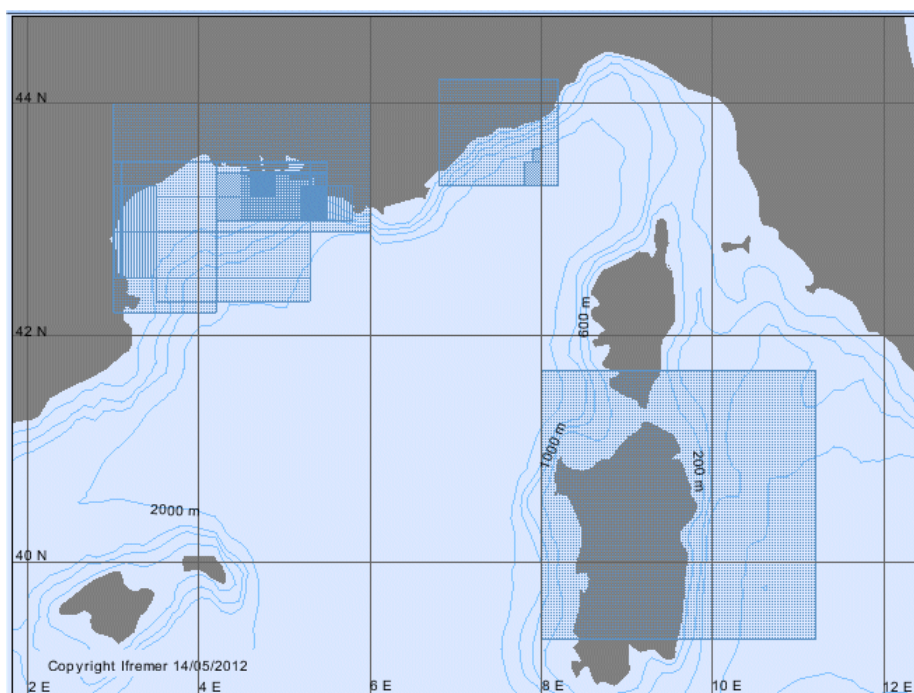


Figure 10 – Tracks of 16 cruises by *Téthys II* in 2011

COMOR-CARBORHONE2

CARIOU Thierry

BOZEC Yann

From 28-11-2011 to 06-12-2011

MINNERHO 4

BOMBLED Bruno

From 08-11-2011 to 09-11-2011

RHOMA_LEG2

PAIRAUD Ivane

VERNEY Romaric

From 07-10-2011 to 17-10-2011

MINNERHO 3

RABOUILLE Christophe

From 21-09-2011 to 24-09-2011

TFM01

TESSON Michel

From 19-08-2011 to 28-08-2011

ROCCHSED11

CHIFFOLEAU Jean-François

From 16-07-2011 to 23-07-2011

JELLYWATCH

MOLCARD Anne

From 09-07-2011 to 10-07-2011

CASSEIS II

FOURNIER François

From 03-07-2011 to 08-07-2011

BILLION 30

UNESCH Stéphane

From 08-06-2011 to 10-06-2011

MINNERHO 2

RABOUILLE Christophe

From 23-05-2011 to 26-05-2011

MINNERHO 1

RABOUILLE Christophe

From 02-05-2011 to 06-05-2011

METYSS 3

AULLIER Virginie

From 04-04-2011 to 25-04-2011

RHOMA_LEG1

PAIRAUD Ivane

VERNEY Romaric

From 09-03-2011 to 20-03-2011

COSTEAU 6

CARLOTTI François

From 23-01-2011 to 04-02-2011

BOUSSOLE 2011

DIAMOND Emilie

VELLUCCI Vincenzo

ANTOINE David

From 18-01-2011 to 12-12-2011

MOOSE (DYFAMED)

COPPOLA Laurent

From 17-01-2011 to 14-11-2011

8.13. Cruises by RV *La Curieuse*

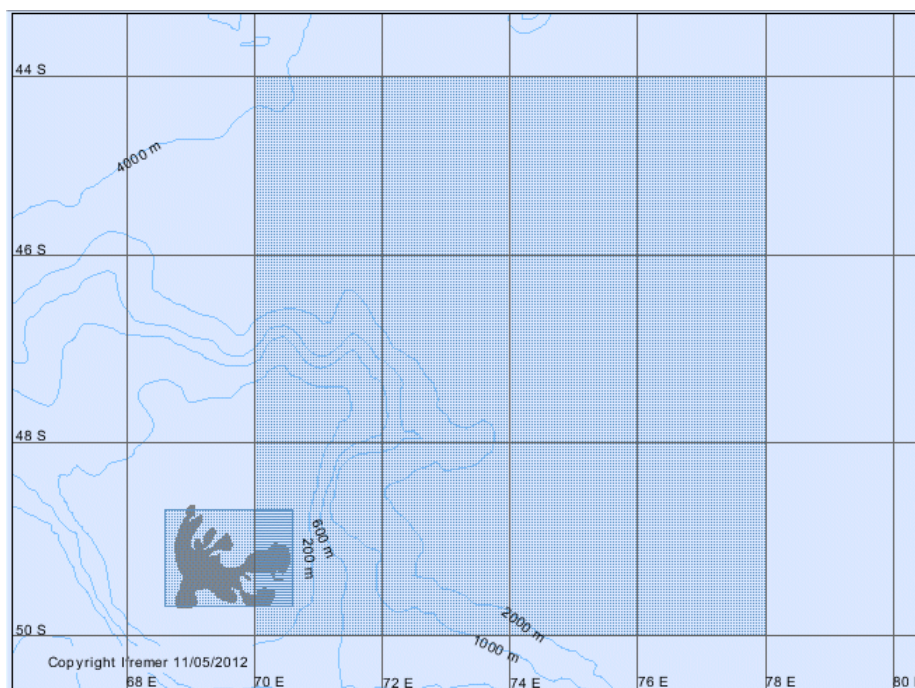


Figure 11 – Tracks of 2 cruises by *La Curieuse* in 2011

PROTEKER

FERAL Jean-Pierre

From 20-12-2011 to 05-01-2012

MAKER 2011/1061

PARK Young-Hyang

From 11-01-2011 to 16-01-2011

8.14. Cruises by *Marion Dufresne*

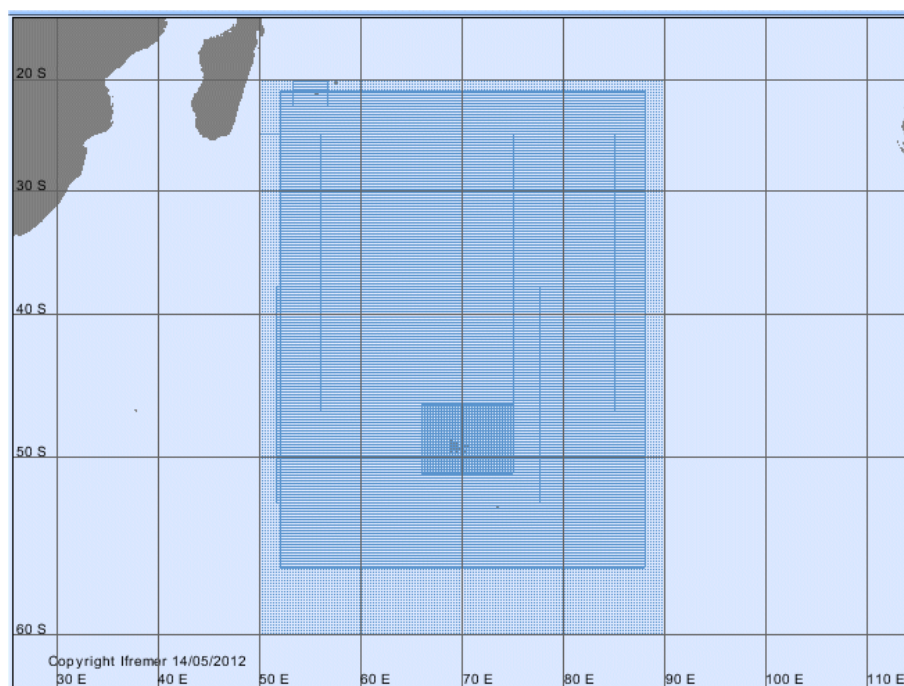


Figure 12 – Tracks of 7 cruises and piggybacking in transit by *Marion Dufresne* in 2011

VT 118 / NIVMER12

CALMANT Stéphane

FICHEN Lionel

From 02-12-2011 to 28-12-2011

MD 188 / KEOPS 2

QUEGUINER Bernard

From 09-10-2011 to 29-11-2011

VT 117 / OISO-20

METZL Nicolas

LO MONACO Claire

From 09-10-2011 to 29-11-2011

VT 114 / OISO-19

METZL Nicolas

LO MONACO Claire

From 14-01-2011 to 20-02-2011

VT 115 / OHA-SIS-BIO-3

ROYER Jean-Yves

From 14-01-2011 to 20-02-2011

MD 185 / INDIEN SUD

MAZAUD Alain

MICHEL Elisabeth

From 14-01-2011 to 16-02-2011

MD 184 / ERODER 4

BACHELERY Patrick

From 04-01-2011 to 12-01-2011

8.15. Cruises by *L'Astrolabe*

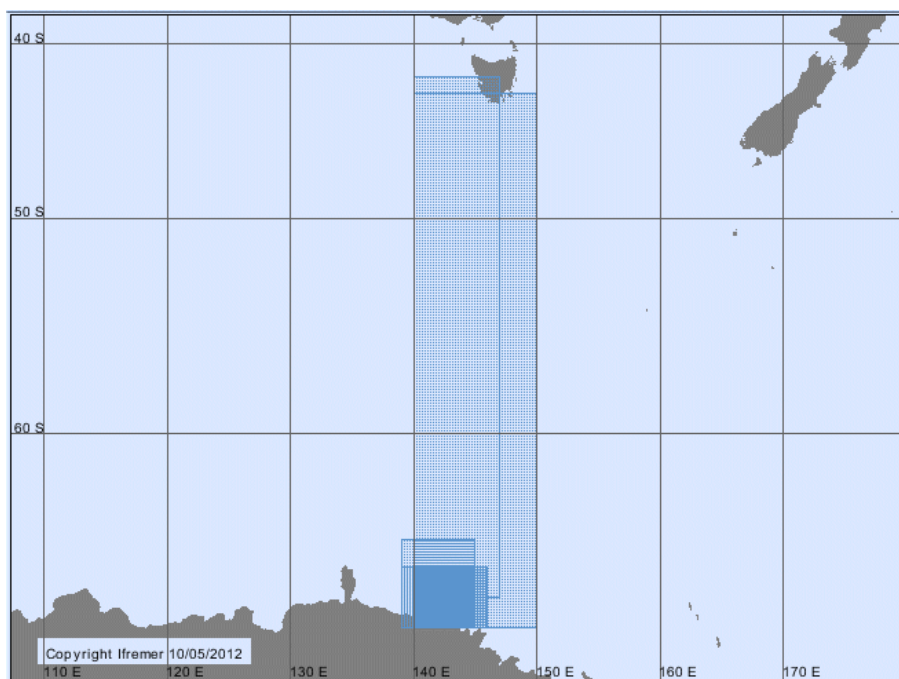


Figure 13 – Tracks of 8 cruises by *L'Astrolabe* in 2011

SURVOSTRAL2011

MORROW-GREINER Rosemary

From 22-10-2011 to 07-03-2012

MINERVE 2011/2012

GOYET Catherine

From 22-10-2011 to 07-03-2012

KREVET 2011

TOULLEC Jean-Yves

From 10-01-2011 to 19-01-2011

ICO2TA 2011

TAVERNIER Eric

From 10-01-2011 to 19-01-2011

REVOLTA 2011

LECOINTRE Guillaume

From 10-01-2011 to 19-01-2011

HOLOCLIP 2011

MASSE Guillaume

HOUSSAIS Marie-Noëlle

CROSTA Xavier

From 10-01-2011 to 19-01-2011

ALBION 2011

HOUSSAIS Marie-Noëlle

From 10-01-2011 to 19-01-2011

CETA 2011

CHARRASSIN Jean-Benoît

From 10-01-2011 to 19-01-2011

8.16. Cruises by *L'Alis*

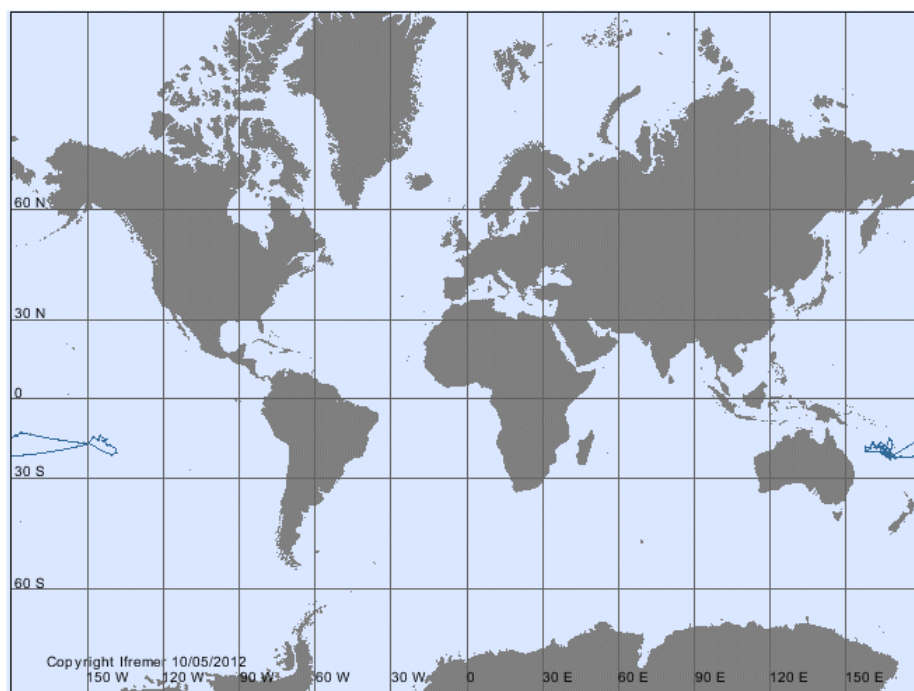


Figure 14 – Tracks of 17 cruises and legs in transit by *L'Alis* in 2011

NECTALIS-2

ALLAIN Valérie
MENKES Christophe
From 26-11-2011 to 14-12-2011

EXPACOU

DANJON Frédéric
From 22-11-2011 to 25-11-2011

HYDROPRONY

PELLETIER Bernard
From 26-10-2011 to 13-11-2011

SPRAYALIS 2

FUDA Jean-Luc
From 14-10-2011 to 20-10-2011

CALIOPE

DUPOUY Cécile
From 04-10-2011 to 13-10-2011

EXBODI LEG2

SAMADI Sarah
CORBARI Laure
From 12-09-2011 to 29-09-2011

EXBODI LEG1

SAMADI Sarah
CORBARI Laure
From 28-08-2011 to 10-09-2011

TR_NMAPVL (Transit)

From 20-08-2011 to 21-08-2011

NECTALIS-1

ALLAIN Valérie
MENKES Christophe
From 29-07-2011 to 16-08-2011

CALCOT

GANACHAUD Alexandre
From 18-07-2011 to 23-07-2011

ILOT-SUD

ANDREFOUET Serge
From 07-07-2011 to 16-07-2011

TR_FUTNMA (Transit)

From 19-06-2011 to 24-06-2011

WALFUT 2011

PELLETIER Bernard
From 13-06-2011 to 19-06-2011

TR_PPTWAL (Transit)

From 04-06-2011 to 12-06-2011

TUAM'2011

DEBITUS Cécile
From 26-04-2011 to 02-06-2011

TR_NMAPPT (Transit)

From 11-04-2011 to 23-04-2011

ESS_AT2011

FLOC'H Henri
From 03-04-2011 to 05-04-2011

8.17. Cruises by *Beautemps-Beaupré*

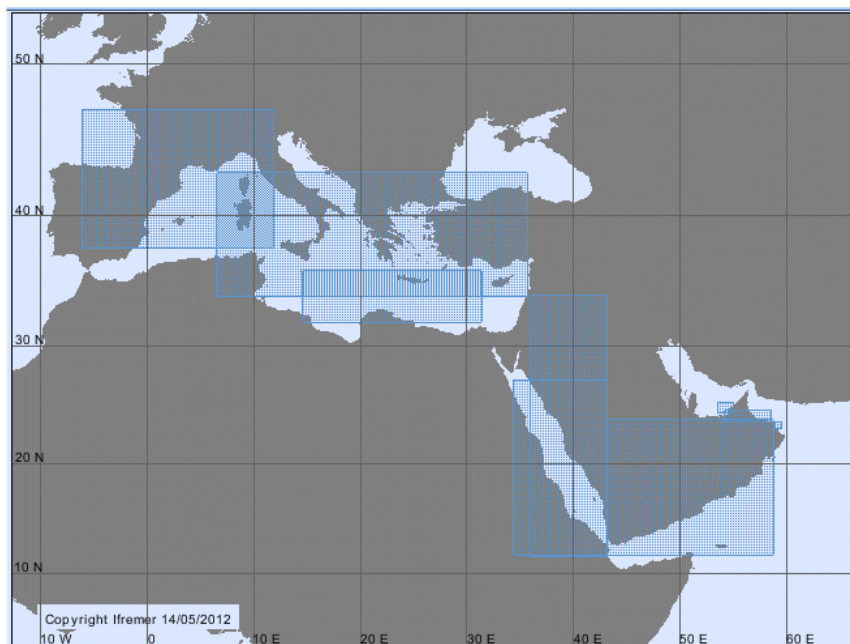


Figure 15 — Tracks of 13 cruises and legs in transit by *Beautemps-Beaupré* in 2011

TV_BEYROUTH_TOULON

IETA Raphaël Legouge

From 16-07-2011 to 27-07-2011

TV_DJIBOUTI_BEYROUTH

IETA Raphaël Legouge

From 24-06-2011 to 11-07-2011

TV_MASCATE_DJIBOUTI

IETA Raphaël Legouge

From 14-06-2011 to 20-06-2011

TV_ABUDHABI_MASCATE

IETA Raphaël Legouge

From 08-06-2011 to 09-06-2011

GAP2011_L4

IETA Raphaël Legouge

From 18-05-2011 to 31-05-2011

GAP2011_L3

IETA Raphaël Legouge

From 03-05-2011 to 14-05-2011

GAP2011_L2

IETA Raphaël Legouge

From 21-04-2011 to 29-04-2011

GAP2011_L1

IETA Raphaël Legouge

From 09-04-2011 to 17-04-2011

PHYSINDIEN_LEG3

IETA Caroline Bru

From 28-03-2011 to 01-04-2011

PHYSINDIEN_LEG2

IETA Caroline Bru

From 07-03-2011 to 23-03-2011

PHYSINDIEN_LEG1

IETA Caroline Bru

From 26-02-2011 to 03-03-2011

TV_MALTE_SUEZ

IETA Caroline Bru

From 20-02-2011 to 24-02-2011

TV_BREST_MALTE

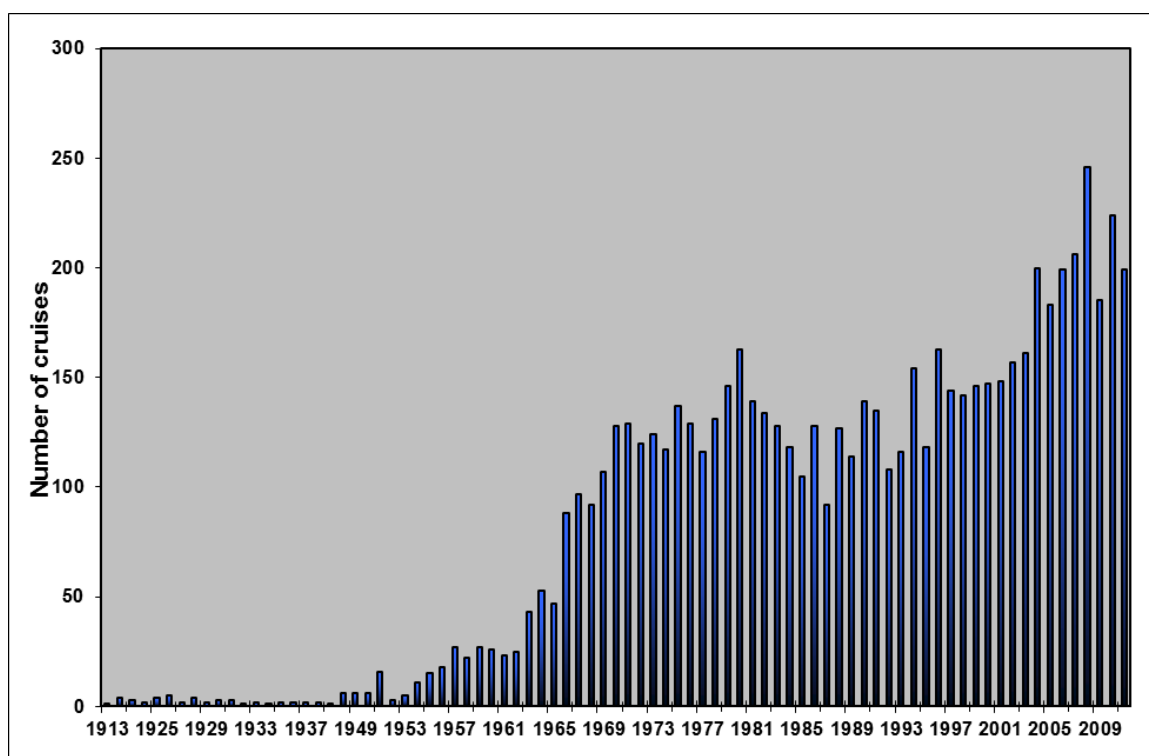
IETA Caroline Bru

From 07-02-2011 to 15-02-2011

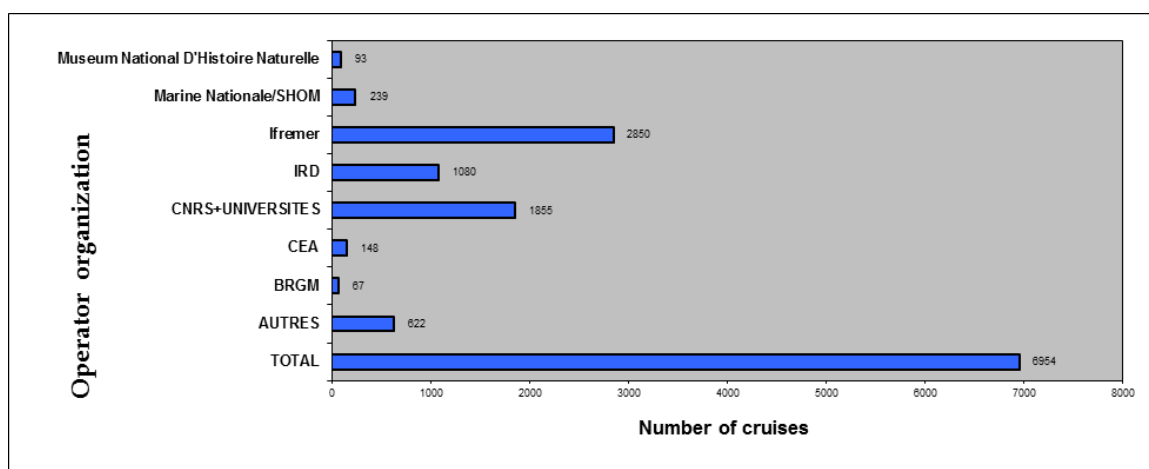
9. Statistics

9.1. Background

The 6,954 French cruises (comprising the ocean research cruises, transits and trial cruises – non-confidential or under contract, but not ranked Confidential defence) can be broken down as follows over time:



The main client organizations for these cruises were:



9.2. In 2011

In 2011, 199 French cruises (oceanographic, trials, commercial services and – not classified "Confidential Defence") were recorded at SISMER.

9.2.1. Breakdown of cruises by main contractor (shipowner)

Shipowner	Number of cruises
CNRS	31
IPEV	17
IRD	17
Ifremer	121
FRENCH NAVY/SHOM	13
TOTAL	199

9.2.2. Breakdown of cruises by client organization

The client organization is the entity which has requested the cruise (generally represented by the chief scientist).

Client organization	Number of cruises
BGR Bundesanstalt Fur Geowissenschaften	1
CEA	7
CNRS+UNIVERSITIES	44
Consultant geologist	1
IRD	7
Ifremer	114
INRA National agronomic research institute	1
IPGP Earth physics institute in Paris	1
FRENCH NAVY/SHOM	17
MNHN National museum of natural history	4
Secretariat General of the Pacific Community	2
TOTAL	199

9.2.3. List of 2011 cruises

The list of 2011 cruises by vessel is given below.

Information about each of the cruises is available on the Nautilus website <http://www.ifremer.fr/sismerData/jsp/campagnesALaMer.jsp> by clicking [CTRL + left CLICK] on the name of the cruise.

Vessel	Cruise	Start date	End date	Geographical area	Name of chief scientist	Chief scientist's laboratory
Alis	CALCOT	18 07 2011	23 07 2011	SE PACIFIC (140 W BOUNDARY)	GANACHAUD Alexandre	IRD NOUMEA CENTER, IRD
Alis	CALIOPE	13 10 2011	13 10 2011	SW PACIFIC (140 W BOUNDARY)	DUPOUY Cécile	CENTRE D'OCEANOLOGIE DE MARSEILLE - ENDOUME (COM), University of the Mediterranean (U2)
Alis	ESS_AT2011	03 04 2011	05 04 2011	SOUTH PACIFIC	FLOCH Henri	IFREMER BREST CENTER, Ifremer
Alis	EXBODI LEG1	28 08 2011	10 09 2011	SOUTH PACIFIC	SAMADI Sarah	SYSTEMATICS & EVOLUTION DEPARTMENT, National Museum of natural history MNHN
Alis	EXBODI LEG2	12 09 2011	29 09 2011	SOUTH PACIFIC	SAMADI Sarah	SYSTEMATICS & EVOLUTION DEPARTMENT, National Museum of natural history MNHN
Alis	EXPACOU	22 11 2011	25 11 2011	SOUTH PACIFIC	DANJON Frédéric	BIODIVERSITY, GENES AND COMMUNITIES - UMR 1202 BIOGECO, National agronomic research institute (INRA)
Alis	HYDROPRONY	26 10 2011	13 11 2011	SW PACIFIC (140 W BOUNDARY)	PELLETIER Bernard	IRD NOUMEA CENTER, IRD
Alis	ILOT-SUD	07 07 2011	16 07 2011	SW PACIFIC (140 W BOUNDARY)	ANDREFOUET Serge	IRD NOUMEA CENTER, IRD
Alis	NECTALIS-1	29 07 2011	16 08 2011	SW PACIFIC (140 W BOUNDARY)	ALLAIN Valérie	SECRETARIAT GENERAL OF THE PACIFIC COMMUNITY, CPS
Alis	NECTALIS-2	26 11 2011	14 12 2011	SW PACIFIC (140 W BOUNDARY)	ALLAIN Valérie	SECRETARIAT GENERAL OF THE PACIFIC COMMUNITY, CPS
Alis	SPRAYALIS 2	14 10 2011	20 10 2011	SW PACIFIC (140 W BOUNDARY)	FUDA Jean-Luc	COM / LAB. D'OCEANOLOG. PHYS. & BIOGEOCHIMIQ. (LOPB) - LUMINY, CNRS
Alis	TR_FUTNMA	19 06 2011	24 06 2011	SOUTH PACIFIC	Transit with no chief scientist.	GENAVIR BREST, Ifremer
Alis	TR_NMAPPT	11 04 2011	23 04 2011	SOUTH PACIFIC	Transit with no chief scientist.	GENAVIR BREST, Ifremer
Alis	TR_NMAPVL	20 08 2011	21 08 2011	SOUTH PACIFIC	Transit with no chief scientist.	GENAVIR BREST, Ifremer
Alis	TR_PPTWAL	04 06 2011	12 06 2011	SOUTH PACIFIC	Transit with no chief scientist.	GENAVIR BREST, Ifremer

Vessel	Cruise	Start date	End date	Geographical area	Name of chief scientist	Chief scientist's laboratory
Alis	TUAM'2011	26 04 2011	02 06 2011	SE PACIFIC (140 W BOUNDARY)	DEBITUS Cécile	IRD PAPEETE CENTER, IRD
Alis	WALFUT 2011	13 06 2011	19 06 2011	SW PACIFIC (140 W BOUNDARY)	PELLETIER Bernard	IRD NOUMEA CENTER, IRD
L'Astrolabe	ALBION 2011	10 01 2011	19 01 2011	ANTARCTIC OCEAN	HOUSSAIS Marie-Noëlle	LOCEAN (OCEANOGRAPHY AND CLIMATE LABORATORY), UMR 7159, University of Paris VI - UPMC
L'Astrolabe	CETA 2011	10 01 2011	19 01 2011	ANTARCTIC OCEAN	CHARRASSIN Jean-Benoît	AQUATIC POPULATIONS AND ENVIRONMENTS DEPARTMENT, National Museum of natural history MNHN
L'Astrolabe	HOLOCLIP 2011	10 01 2011	19 01 2011	ANTARCTIC OCEAN	MASSE Guillaume	LOCEAN (OCEANOGRAPHY AND CLIMATE LABORATORY), UMR 7159, University of Paris VI - UPMC
L'Astrolabe	ICO2TA 2011	10 01 2011	19 01 2011	ANTARCTIC OCEAN	TAVERNIER Eric	BIOLOGICAL ENGINEERING DEPARTMENT, Université du Littoral Côte D'Opale
L'Astrolabe	KREVET 2011	10 01 2011	19 01 2011	ANTARCTIC OCEAN	TOULLEC Jean-Yves	ROSCOFF BIOLOGICAL STATION, CNRS
L'Astrolabe	MINERVE 2011/2012	22 10 2011	07 03 2012	ANTARCTIC OCEAN	GOYET Catherine	INTEGRATED SYSTEM BIOPHYSICS AND DYNAMICS LABORATORY University of Perpignan
L'Astrolabe	REVOLTA 2011	10 01 2011	19 01 2011	ANTARCTIC OCEAN	LECOINTRE Guillaume	SYSTEMICS ADAPTATION EVOLUTION (SAE)- UMR 7138, University of Paris VI - UPMC
L'Astrolabe	SURVOSTRAL2011	22 10 2011	07 03 2012	ANTARCTIC OCEAN	MORROW-GREINER Rosemary	LEGOS, CNRS
L'Atalante	AFFSISM_SERCEL_LE G1	30 03 2011	07 04 2011	WESTERN MEDITERRANEAN BASIN	CLECH Didier	NSE - VESSELS AND SHIPBOARD SYSTEMS, Ifremer
L'Atalante	AFFSISM_SERCEL_LE G2	07 04 2011	12 04 2011	WESTERN MEDITERRANEAN BASIN	CLECH Didier	NSE - VESSELS AND SHIPBOARD SYSTEMS, Ifremer
L'Atalante	AFFSISM_SERCEL_LE G3	13 04 2011	21 04 2011	WESTERN MEDITERRANEAN BASIN	CLECH Didier	NSE - VESSELS AND SHIPBOARD SYSTEMS, Ifremer
L'Atalante	CASCADE	01 03 2011	13 03 2011	WESTERN MEDITERRANEAN BASIN	DURRIEU de MADRON Xavier	CEFREM, University of Perpignan
L'Atalante	ESSNAUT 11	26 07 2011	12 08 2011	WESTERN MEDITERRANEAN BASIN	NIVAGGIOLI Jean-Michel	GENAVIR LA SEYNE SUR MER, Ifremer

Vessel	Cruise	Start date	End date	Geographical area	Name of chief scientist	Chief scientist's laboratory
L'Atalante	MIRROR1	04 05 2011	29 05 2011	NORTHERN ATLANTIC OCEAN	KLINGELHOEFER Frauke	GM- MARINE GEOSCIENCES, Ifremer
L'Atalante	MIRROR2	02 06 2011	11 06 2011	NORTHERN ATLANTIC OCEAN	REICHERT Christian	BGR-FEDERAL INSTITUTE FOR GEOSCIENCES AND NATURAL RESOURCE, Bundesanstalt Fur Geowissenschaften (BGR)
L'Atalante	TR_CASLS	12 06 2011	16 06 2011	WESTERN MEDITERRANEAN BASIN	Transit with no chief scientist.	GENAVIR BREST, Ifremer
L'Atalante	TR_LHAAPI	22 09 2011	29 10 2011	ATLANTIC OCEAN	Transit with no chief scientist.	GENAVIR BREST, Ifremer
L'Atalante	TR_RIOMAL	02 02 2011	20 02 2011	ATLANTIC OCEAN	Transit with no chief scientist.	GENAVIR BREST, Ifremer
L'Atalante	TR_SVAG	20 12 2011	12 01 2012	PACIFIC OCEAN	Transit with no chief scientist.	GENAVIR BREST, Ifremer
L'Atalante	TVACOUS	20 02 2011	24 02 2011	WESTERN MEDITERRANEAN BASIN	ARZELIES Patrick	IFREMER TOULON CENTER, Ifremer
L'Atalante	TV_TLNCAS	27 04 2011	02 05 2011	WESTERN MEDITERRANEAN BASIN	Transit with no chief scientist.	GENAVIR BREST, Ifremer
Beautemps-Beaupré	GAP2011_L1	09 04 2011	17 04 2011	ARABIAN SEA (GULF OF OMAN)	IETA Raphaël Legouge	SHOM - BREST CENTER, French Navy/SHOM
Beautemps-Beaupré	GAP2011_L2	21 04 2011	29 04 2011	ARABIAN SEA (GULF OF OMAN)	IETA Raphaël Legouge	SHOM - BREST CENTER, French Navy/SHOM
Beautemps-Beaupré	GAP2011_L3	03 05 2011	14 05 2011	ARABIAN SEA (GULF OF OMAN)	IETA Raphaël Legouge	SHOM - BREST CENTER, French Navy/SHOM
Beautemps-Beaupré	GAP2011_L4	18 05 2011	31 05 2011	ARABIAN SEA (GULF OF OMAN)	IETA Raphaël Legouge	SHOM - BREST CENTER, French Navy/SHOM
Beautemps-Beaupré	PHYSINDIEN_LEG1	26 02 2011	03 03 2011	RED SEA	IETA Caroline Bru	SHOM - BREST CENTER, French Navy/SHOM
Beautemps-Beaupré	PHYSINDIEN_LEG2	07 03 2011	23 03 2011	ARABIAN SEA (GULF OF OMAN)	IETA Caroline Bru	SHOM - BREST CENTER, French Navy/SHOM

Vessel	Cruise	Start date	End date	Geographical area	Name of chief scientist	Chief scientist's laboratory
Beautemps-Beaupré	PHYSINDIEN LEG3	28 03 2011	01 04 2011	PERSIAN GULF	IETA Caroline Bru	SHOM - BREST CENTER, French Navy/SHOM
Beautemps-Beaupré	TV ABUDHABI MASCATE	08 06 2011	09 06 2011	ARABIAN SEA (GULF OF OMAN)	IETA Raphaël Legouge	SHOM - BREST CENTER, French Navy/SHOM
Beautemps-Beaupré	TV BEYROUTH TOULON	16 07 2011	27 07 2011	MEDITERRANEAN	IETA Raphaël Legouge	SHOM - BREST CENTER, French Navy/SHOM
Beautemps-Beaupré	TV BREST MALTE	07 02 2011	15 02 2011	EASTERN MEDITERRANEAN BASIN	IETA Caroline Bru	SHOM - BREST CENTER, French Navy/SHOM
Beautemps-Beaupré	TV DJIBOUTI BEYROUTH	24 06 2011	11 07 2011	RED SEA	IETA Raphaël Legouge	SHOM - BREST CENTER, French Navy/SHOM
Beautemps-Beaupré	TV MALTE SUEZ	20 02 2011	24 02 2011	EASTERN MEDITERRANEAN BASIN	IETA Caroline Bru	SHOM - BREST CENTER, French Navy/SHOM
Beautemps-Beaupré	TV MASCATE DJIBOUTI	14 06 2011	20 06 2011	GULF OF ADEN	IETA Raphaël Legouge	SHOM - BREST CENTER, French Navy/SHOM
Côtes De La Manche	BIOMIN-2	20 07 2011	02 08 2011	WESTERN MEDITERRANEAN BASIN	DEFLANDRE Bruno	EPOC - DEPARTMENT OF GEOLOGY AND OCEANOGRAPHY (DGO), University of Bordeaux I
Côtes De La Manche	DISVER2011	05 04 2011	11 04 2011	ENGLISH CHANNEL	BAILLY DU BOIS Pascal	INSTITUTE FOR RADIOPROTECTION AND NUCLEAR SAFETY, CEA
Côtes De La Manche	FLUMES LEG1	15 05 2011	25 05 2011	ENGLISH CHANNEL	VERNEY Romaric	DYNECO/PHYSED- HYDRODYNAMICS AND SEDIMENTARY PHYSICS LABORATORY, Ifremer
Côtes De La Manche	FLUMES LEG2	01 11 2011	11 11 2011	ENGLISH CHANNEL	VERNEY Romaric	DYNECO/PHYSED- HYDRODYNAMICS AND SEDIMENTARY PHYSICS LABORATORY, Ifremer
Côtes De La Manche	FROMVAR 2011	02 09 2011	16 09 2011	BAY OF BISCAY	MARIE Louis	OPS/LPO- OCEAN PHYSICS LABORATORY, Ifremer
Côtes De La Manche	IPO	22 11 2011	28 11 2011	NE ATLANTIC (40 W BOUNDARY)	COLAS Florent	ERT- TECHNOLOGICAL TRIALS AND RESEARCH DEPARTMENT, Ifremer
Côtes De La Manche	MARLBORO	07 07 2011	16 07 2011	ALBORAN SEA	D'ACREMONT Elia	INSTITUTE OF EARTH SCIENCES IN PARIS - UMR 7193 ISTEP, University of Paris VI - UPMC

Vessel	Cruise	Start date	End date	Geographical area	Name of chief scientist	Chief scientist's laboratory
Côtes De La Manche	MESFLUX	17 03 2011	24 03 2011	ENGLISH CHANNEL	BLANPAIN Olivier	GEOLOGY LABORATORY UMR CNRS 6143 'MC2', University of Rouen
Côtes De La Manche	PECH10	24 08 2011	29 08 2011	BAY OF BISCAY	HOWA Hélène	RECENT AND FOSSIL BIO-INDICATORS LABORATROY (BIAF), University of Angers
Côtes De La Manche	PECH9	01 02 2011	06 02 2011	BAY OF BISCAY	HOWA Hélène	RECENT AND FOSSIL BIO-INDICATORS LABORATROY (BIAF), University of Angers
Côtes De La Manche	PECTOW 11	09 03 2011	16 03 2011	ENGLISH CHANNEL	DAUVIN Jean Claude	CONTINENTAL AND COASTAL MORPHODYNAMICS LABORATORY (M2C), University of Caen
Côtes De La Manche	PREVISHELF LEG1	17 02 2011	23 02 2011	BAY OF BISCAY	BASSOULLET Philippe	DYNECO/PHYSED- HYDRODYNAMICS AND SEDIMENTARY PHYSICS LABORATORY, Ifremer
Côtes De La Manche	PREVISHELF LEG2	30 05 2011	07 06 2011	BAY OF BISCAY	BASSOULLET Philippe	DYNECO/PHYSED- HYDRODYNAMICS AND SEDIMENTARY PHYSICS LABORATORY, Ifremer
Côtes De La Manche	PSEUTEC	09 06 2011	16 06 2011	CELTIC SEA	LUNVEN Michel	DYNECO/PELAGOS- PELAGIC ECOLOGY LABORATORY, Ifremer
Côtes De La Manche	VIDEOCHARM 2011	18 06 2011	28 06 2011	ENGLISH CHANNEL	DAUVIN Jean Claude	CONTINENTAL AND COASTAL MORPHODYNAMICS LABORATORY (M2C), University of Caen
La Curieuse	MAKER 2011/1061	11 01 2011	16 01 2011	ANTARCTIC OCEAN	PARK Young-Hyang	PHYSICAL OCEANOGRAPHY LABORATORY, National museum of natural history
La Curieuse	PROTEKER	20 12 2011	05 01 2012	ANTARCTIC OCEAN	FERAL Jean-Pierre	MED. INSTITUTE OF BIODIVERSITY & MARINE AND CONTINENTAL ECOLOGY, University of the Mediterranean (U2)
L'Europe	BILLION 31	16 11 2011	24 11 2011	WESTERN MEDITERRANEAN BASIN	KUNESCH Stéphane	CEFREM, University of Perpignan
L'Europe	CAPCORAL 2	27 08 2011	20 09 2011	EASTERN MEDITERRANEAN BASIN	CLABAUT Philippe	CONSULTANT GEOLOGY
L'Europe	COMOR-CARBORHONE 1	24 04 2011	30 04 2011	WESTERN MEDITERRANEAN BASIN	CARIOU Thierry	ROSCOFF BIOLOGICAL STATION, CNRS
L'Europe	COSTEAU 5	22 01 2011	10 02 2011	WESTERN MEDITERRANEAN BASIN	TRONCZYNSKI Jacek	DPT RBE / UR BIOGEOCHEMISTRY & ECOTOXICOLOGY (NANTES), Ifremer

Vessel	Cruise	Start date	End date	Geographical area	Name of chief scientist	Chief scientist's laboratory
L'Europe	COSTEAU 7	14 04 2011	23 04 2011	WESTERN MEDITERRANEAN BASIN	TRONCZYNSKI Jacek	DPT RBE / UR BIOGEOCHEMISTRY & ECOTOXICOLOGY (NANTES), Ifremer
L'Europe	ESSAUV 11	25 10 2011	06 11 2011	WESTERN MEDITERRANEAN BASIN	OPDERBECKE Jan	IFREMER TOULON CENTER, Ifremer
L'Europe	ESSMF	04 03 2011	16 03 2011	WESTERN MEDITERRANEAN BASIN	OPDERBECKE Jan	IFREMER TOULON CENTER, Ifremer
L'Europe	ESSPOSIT	14 10 2011	24 10 2011	WESTERN MEDITERRANEAN BASIN	EDMOND Toussaint	IFREMER TOULON CENTER, Ifremer
L'Europe	ESS SMF	05 08 2011	05 08 2011	WESTERN MEDITERRANEAN BASIN	UNKNOWN	UNKNOWN, Misc. private
L'Europe	FUI SEAEXPLORER 2	29 11 2011	06 12 2011	WESTERN MEDITERRANEAN BASIN	LUCCIONI Marc	IFREMER TOULON CENTER, Ifremer
L'Europe	MEDITS 2011	23 05 2011	26 06 2011	WESTERN MEDITERRANEAN BASIN	JADAUD Angélique	IFREMER SETE STATION, Ifremer
L'Europe	MELBA	30 04 2011	17 05 2011	WESTERN MEDITERRANEAN BASIN	COUDRAY Sylvain	IFREMER TOULON CENTER, Ifremer
L'Europe	MYTITURK	17 03 2011	13 04 2011	WESTERN MEDITERRANEAN BASIN	GALGANI François	IFREMER TOULON CENTER, Ifremer
L'Europe	PELMED 2011	27 06 2011	30 07 2011	WESTERN MEDITERRANEAN BASIN	BIGOT Jean-Louis	IFREMER SETE STATION, Ifremer
L'Europe	SISOURCE	21 02 2011	03 03 2011	WESTERN MEDITERRANEAN BASIN	LEMOINE Mathieu	GENAVIR BREST, Ifremer
L'Europe	STEP	26 09 2011	11 10 2011	WESTERN MEDITERRANEAN BASIN	APPRIOUAL Ronan	GM- MARINE GEOSCIENCES, Ifremer
L'Europe	TR BASTLN	20 09 2011	21 09 2011	MEDITERRANEAN	Transit with no chief scientist.	GENAVIR BREST, Ifremer

Vessel	Cruise	Start date	End date	Geographical area	Name of chief scientist	Chief scientist's laboratory
L'Europe	TR_NICTLN	12 10 2011	13 10 2011	MEDITERRANEAN	Transit with no chief scientist.	GENAVIR BREST, Ifremer
L'Europe	TR_TLNBAS	26 08 2011	27 08 2011	MEDITERRANEAN	Transit with no chief scientist.	GENAVIR BREST, Ifremer
L'Europe	TR_TLNNIC	25 09 2011	25 09 2011	MEDITERRANEAN	Transit with no chief scientist.	GENAVIR BREST, Ifremer
Gwen Drez	BIOCO	22 09 2011	28 09 2011	ENGLISH CHANNEL	BURGEOT Thierry	DPT RBE / UR BIOGEOCHEMISTRY & ECOTOXICOLOGY (NANTES), Ifremer
Gwen Drez	CGFS2011	01 10 2011	31 10 2011	ENGLISH CHANNEL	LEROY Didier	HMMN- ENGLISH CHANNEL-NORTH SEA FISHERIES SCIENCES DEPARTMENT, Ifremer
Gwen Drez	LANGOLF 2011	14 05 2011	30 05 2011	BAY OF BISCAY	SALAUN Michèle	STH/LBP- FISHERIES BIOLOGY LABORATORY, Ifremer
Gwen Drez	ORHAGO 11	03 11 2011	11 12 2011	BAY OF BISCAY	COUPEAU Yann	IFREMER LA ROCHELLE-L/HOUMEAU STATION, Ifremer
Gwen Drez	TR_BREHAV	19 09 2011	21 09 2011	BAY OF BISCAY	Transit with no chief scientist.	GENAVIR BREST, Ifremer
Gwen Drez	TR_CHERCONC	31 10 2011	02 11 2011	BAY OF BISCAY	Transit with no chief scientist.	GENAVIR BREST, Ifremer
Gwen Drez	TR_CONBRE	18 09 2011	19 09 2011	BAY OF BISCAY	Transit with no chief scientist.	GENAVIR BREST, Ifremer
Gwen Drez	TR_HAVBOU	28 09 2011	30 09 2011	BAY OF BISCAY	Transit with no chief scientist.	GENAVIR BREST, Ifremer
Haliotis	ESSTECH_11HA1	22 02 2011	24 02 2011	BAY OF BISCAY	BISQUAY Hervé	GENAVIR BREST, Ifremer
Haliotis	HALAMACOU 2	15 09 2011	27 09 2011	NE ATLANTIC (40 W BOUNDARY)	CORDIER Céline	DYNECO/BENTHOS- BENTHIC ECOLOGY LABORATORY, Ifremer
Haliotis	MEDON	05 04 2011	09 04 2011	BAY OF BISCAY	AOUSTIN Yannick	RDT - DPT TECHNOLOGICAL RESEARCH & DEVELOPMENT, Ifremer
Haliotis	POCK&PLOOPS	13 04 2011	03 05 2011	CELTIC SEA	BALTZER Agnès	CONTINENTAL AND COASTAL MORPHODYNAMICS LABORATORY (M2C), University of Caen
Marion Dufresne	MD 184 / ERODER 4	04 01 2011	12 01 2011	INDIAN OCEAN	BACHELERY Patrick	ECOMAR MARINE ECOLOGY LABORATORY, University of La Réunion

Vessel	Cruise	Start date	End date	Geographical area	Name of chief scientist	Chief scientist's laboratory
Marion Dufresne	MD 185 / INDIEN SUD	14 01 2011	16 02 2011	INDIAN OCEAN	MAZAUD Alain	CLIMATE AND ENVIRONMENTAL SCIENCES LABORATORY, CEA
Marion Dufresne	MD 188 / KEOPS 2	09 10 2011	29 11 2011	ANTARCTIC OCEAN	QUEGUINER Bernard	COM / LAB. OF PHYSICAL OCEANOGRAPHY & BIOGEOCHEMISTRY (LOPB) - ENDOUME, CNRS
Marion Dufresne	VT 114 / OISO-19	14 01 2011	20 02 2011	INDIAN OCEAN	METZL Nicolas	LOCEAN (OCEANOGRAPHY AND CLIMATE LABORATORY), UMR 7159, University of Paris VI - UPMC
Marion Dufresne	VT 115 / OHA-SIS-BIO-3	14 01 2011	20 02 2011	INDIAN OCEAN	ROYER Jean-Yves	UMR 6538 / CNRS OCEAN DOMAINS, University of Western Brittany (UBO)
Marion Dufresne	VT 117 / OISO-20	09 10 2011	29 11 2011	ANTARCTIC OCEAN	METZL Nicolas	LOCEAN (OCEANOGRAPHY AND CLIMATE LABORATORY), UMR 7159, University of Paris VI - UPMC
Marion Dufresne	VT 118 / NIVMER12	02 12 2011	28 12 2011	ANTARCTIC OCEAN	CALMANT Stéphane	LEGOS, CNRS
Pourquoi pas?	BIOBAZ 2011	21 07 2011	23 07 2011	NE ATLANTIC (40 W BOUNDARY)	LALLIER François	ROSCOFF BIOLOGICAL STATION, CNRS
Pourquoi pas?	BOBECO LEG1	10 09 2011	22 09 2011	BAY OF BISCAY	ARNAUD-HAOND Sophie	EEP/LEP- DEEP SEA ENVIRONMENT LABORATORY, IFREMER
Pourquoi pas?	BOBECO LEG2	24 09 2011	10 10 2011	BAY OF BISCAY	ARNAUD-HAOND Sophie	EEP/LEP- DEEP SEA ENVIRONMENT LABORATORY, IFREMER
Pourquoi pas?	CONGOLOBE	12 12 2011	10 01 2012	SE ATLANTIC (20 W BOUNDARY)	RABOUILLE Christophe	CLIMATE AND ENVIRONMENTAL SCIENCES LABORATORY, CEA
Pourquoi pas?	ERATO	05 05 2011	23 05 2011	WESTERN MEDITERRANEAN BASIN	GUILLOU Raymond (IPETA)	SHOM - BREST CENTER, French Navy/SHOM
Pourquoi pas?	ESSROV	23 04 2011	03 05 2011	WESTERN MEDITERRANEAN BASIN	SIMEONI Patrick	IFREMER TOULON CENTER, Ifremer
Pourquoi pas?	MOMARSAT2011	28 06 2011	23 07 2011	NW ATLANTIC (40 W BOUNDARY)	CANNAT Mathilde	INSTITUT DE PHYSIQUE DU GLOBE DE PARIS IPGP, Earth physics institute in Paris
Pourquoi pas?	NEUTRIVIC 10	16 06 2011	19 06 2011	MEDITERRANEAN	SIMEONI Patrick	IFREMER TOULON CENTER, Ifremer
Pourquoi pas?	PROTEUS_DUNES	01 09 2011	06 09 2011	NE ATLANTIC (40 W BOUNDARY)	IETA Raphaël Legouge	SHOM - BREST CENTER, French Navy/SHOM

Vessel	Cruise	Start date	End date	Geographical area	Name of chief scientist	Chief scientist's laboratory
Pourquoi pas?	TR BREPGT	19 10 2011	04 11 2011	NE ATLANTIC (40 W BOUNDARY)	Transit with no chief scientist.	GENAVIR BREST, Ifremer
Pourquoi pas?	TR LIBMAL	28 02 2011	14 03 2011	NE ATLANTIC (40 W BOUNDARY)	Transit with no chief scientist.	GENAVIR BREST, Ifremer
Pourquoi pas?	TV ARVOR	18 06 2011	28 06 2011	NE ATLANTIC (40 W BOUNDARY)	LEBRETON Nathanaele	SHOM - BREST CENTER, French Navy/SHOM
Pourquoi pas?	TV ARVOR2	25 07 2011	30 07 2011	ATLANTIC OCEAN	Transit with no chief scientist.	GENAVIR BREST, Ifremer
Pourquoi pas?	TV MALTOU	15 03 2011	19 03 2011	WESTERN MEDITERRANEAN BASIN	Transit with no chief scientist.	GENAVIR BREST, Ifremer
Pourquoi pas?	WACS	26 01 2011	25 02 2011	GULF OF GUINEA	OLU Karine	EEP/LEP- DEEP SEA ENVIRONMENT LABORATORY, IFREMER
Le Suroît	APINIL LEG1	16 09 2011	29 10 2011	EASTERN MEDITERRANEAN BASIN	MIGEON Sébastien	GEOSCIENCES AZUR - VILLEFRANCHE SITE, University of Paris VI - UPMC
Le Suroît	APINIL LEG2	01 10 2011	16 10 2011	EASTERN MEDITERRANEAN BASIN	MIGEON Sébastien	GEOSCIENCES AZUR - VILLEFRANCHE SITE, University of Paris VI - UPMC
Le Suroît	APINIL LEG3	17 10 2011	25 10 2011	EASTERN MEDITERRANEAN BASIN	MIGEON Sébastien	GEOSCIENCES AZUR - VILLEFRANCHE SITE, University of Paris VI - UPMC
Le Suroît	ESSMF	13 03 2011	20 03 2011	WESTERN MEDITERRANEAN BASIN	OPDERBECKE Jan	IFREMER TOULON CENTER, Ifremer
Le Suroît	ESS MVP200	20 03 2011	23 03 2011	WESTERN MEDITERRANEAN BASIN	FLOC'H Henri	IFREMER BREST CENTER, Ifremer
Le Suroît	HYDROBS-MOMAR 2011	24 06 2011	03 07 2011	NE ATLANTIC (40 W BOUNDARY)	PERROT Julie	UMR 6538 / CNRS OCEAN DOMAINS, University of Western Brittany (UBO)
Le Suroît	PIRATA-FR21	01 05 2011	16 06 2011	ATLANTIC OCEAN	BOURLES Bernard	IRD TOULOUSE FIELD OFFICE, IRD
Le Suroît	REPREZAI LEG2	11 04 2011	29 04 2011	GULF OF GUINEA	DROZ Laurence	UMR 6538 / CNRS OCEAN DOMAINS, University of Western Brittany (UBO)
Le Suroît	SPMPLAC	04 07 2011	22 07 2011	NW ATLANTIC (40 W BOUNDARY)	ROEST Walter R.	GM- MARINE GEOSCIENCES, Ifremer

Vessel	Cruise	Start date	End date	Geographical area	Name of chief scientist	Chief scientist's laboratory
Le Suroît	TR_DKPD	16 06 2011	22 06 2011	ATLANTIC OCEAN	Transit with no chief scientist.	GENAVIR BREST, Ifremer
Le Suroît	TR_HERLS	25 10 2011	29 10 2011	MEDITERRANEAN	Transit with no chief scientist.	GENAVIR BREST, Ifremer
Le Suroît	TR_LHALS	30 07 2011	06 08 2011	NORTHERN ATLANTIC OCEAN	Transit with no chief scientist.	GENAVIR BREST, Ifremer
Le Suroît	TR_LSCOT	24 03 2011	09 04 2011	WESTERN MEDITERRANEAN BASIN	Transit with no chief scientist.	GENAVIR BREST, Ifremer
Le Suroît	TR_LSHER	11 09 2011	15 09 2011	MEDITERRANEAN	Transit with no chief scientist.	GENAVIR BREST, Ifremer
Le Suroît	TR_SPMLHA	24 07 2011	29 07 2011	NORTHERN ATLANTIC OCEAN	Transit with no chief scientist.	GENAVIR BREST, Ifremer
Téthys II	BILLION 30	08 06 2011	10 06 2011	WESTERN MEDITERRANEAN BASIN	KUNESCH Stéphane	CEFREM, University of Perpignan
Téthys II	BOUSSOLE 2011	18 01 2011	12 12 2011	LIGURIAN SEA	DIAMOND Emilie	OCEANOGRAPHY LABORATORY OF VILLEFRANCHE (LOV), University of Paris VI - UPMC
Téthys II	CASSEIS II	03 07 2011	08 07 2011	WESTERN MEDITERRANEAN BASIN	FOURNIER François	CARBONATE RESERVOIR AND SYSTEM GEOLOGY (EA4229), University of Provence d'Aix-Marseille 1
Téthys II	COMOR-CARBORHONE2	28 11 2011	06 12 2011	WESTERN MEDITERRANEAN BASIN	CARIOU Thierry	ROSCOFF BIOLOGICAL STATION, CNRS
Téthys II	COSTEAU 6	23 01 2011	04 02 2011	WESTERN MEDITERRANEAN BASIN	CARLOTTI François	COM / LAB. OF PHYSICAL OCEANOGRAPHY & BIOGEOCHEMISTRY (LOPB) - ENDOUME, CNRS
Téthys II	JELLYWATCH	09 07 2011	10 07 2011	WESTERN MEDITERRANEAN BASIN	MOLCARD Anne	ELECTROMAGNETISM & REMOTE SENSING LABORATORY (LSEET), University of Toulon
Téthys II	METYSS 3	04 04 2011	25 04 2011	TYRRHENIAN SEA	GAULLIER Virginie	CEFREM, University of Perpignan

Vessel	Cruise	Start date	End date	Geographical area	Name of chief scientist	Chief scientist's laboratory
Téthys II	MINNERHO 1	02 05 2011	06 05 2011	WESTERN MEDITERRANEAN BASIN	RABOUILLE Christophe	CLIMATE AND ENVIRONMENTAL SCIENCES LABORATORY, CEA
Téthys II	MINNERHO 2	23 05 2011	26 05 2011	WESTERN MEDITERRANEAN BASIN	RABOUILLE Christophe	CLIMATE AND ENVIRONMENTAL SCIENCES LABORATORY, CEA
Téthys II	MINNERHO 3	21 09 2011	24 09 2011	WESTERN MEDITERRANEAN BASIN	RABOUILLE Christophe	CLIMATE AND ENVIRONMENTAL SCIENCES LABORATORY, CEA
Téthys II	MINNERHO 4	08 11 2011	09 11 2011	WESTERN MEDITERRANEAN BASIN	BOMBLED Bruno	CLIMATE AND ENVIRONMENTAL SCIENCES LABORATORY, CEA
Téthys II	MOOSE (DYFAMED)	17 01 2011	14 11 2011	EASTERN MEDITERRANEAN BASIN	COPPOLA Laurent	OCEANOLOGICAL OBSERVATORY OF VILLEFRANCHE SUR MER (OOV), UNIVERSITY OF PARIS VI
Téthys II	RHOMA_LEG1	09 03 2011	20 03 2011	WESTERN MEDITERRANEAN BASIN	PAIRAUD Ivane	IFREMER TOULON CENTER, Ifremer
Téthys II	RHOMA_LEG2	07 10 2011	17 10 2011	WESTERN MEDITERRANEAN BASIN	PAIRAUD Ivane	IFREMER TOULON CENTER, Ifremer
Téthys II	ROCCHSED11	16 07 2011	23 07 2011	WESTERN MEDITERRANEAN BASIN	CHIFFOLEAU Jean-François	DPT RBE / UR BIOGEOCHEMISTRY & ECOTOXICOLOGY (NANTES), Ifremer
Téthys II	TFM01	19 08 2011	28 08 2011	WESTERN MEDITERRANEAN BASIN	TESSON Michel	IMAGES-INSTITUTE FOR MODELING AND ANALYSIS OF MARINE GEO-ENVIRONMENT, University of Perpignan
Thalassa	ASPEX4	06 08 2011	15 08 2011	BAY OF BISCAY	MARIE Louis	OPS/LPO- OCEAN PHYSICS LABORATORY, Ifremer
Thalassa	ESSADCP	06 09 2011	08 09 2011	BAY OF BISCAY	FLOC'H Henri	IFREMER BREST CENTER, Ifremer
Thalassa	ESSTECH	27 07 2011	05 08 2011	BAY OF BISCAY	CLEC'H Didier	NSE - VESSELS AND SHIPBOARD SYSTEMS, Ifremer
Thalassa	EVHOE 2011	17 10 2011	01 12 2011	BAY OF BISCAY	LEAUTE Jean-Pierre	IFREMER LA ROCHELLE-L/HOUMEAU STATION, Ifremer
Thalassa	IBTS 2011	14 01 2011	13 02 2011	NORTH SEA	VERIN Yves	HMMN- ENGLISH CHANNEL-NORTH SEA FISHERIES SCIENCES DEPARTMENT, Ifremer
Thalassa	PELGAS 2011	25 04 2011	05 06 2011	BAY OF BISCAY	MASSE Jacques	EMH- ECOLOGY AND MODELS FOR FISHERIES SCIENCE DEPARTMENT, Ifremer

Vessel	Cruise	Start date	End date	Geographical area	Name of chief scientist	Chief scientist's laboratory
Thalassa	PROTEUS	15 09 2011	12 10 2011	BAY OF BISCAY	ICETA ROSADA	SHOM - BREST CENTER, French Navy/SHOM
Thalassa	TR BREVIC	24 03 2011	26 03 2011	NE ATLANTIC (40 W BOUNDARY)	Transit with no chief scientist.	GENAVIR BREST, Ifremer
Thalia	CARMOLIT_LEG1	28 02 2011	03 03 2011	SW ATLANTIC (20 W BOUNDARY)	QUEMENER Loïc	RDT - DPT TECHNOLOGICAL RESEARCH & DEVELOPMENT, Ifremer
Thalia	CARMOLIT_LEG2	22 09 2011	23 09 2011	BAY OF BISCAY	QUEMENER Loïc	RDT - DPT TECHNOLOGICAL RESEARCH & DEVELOPMENT, Ifremer
Thalia	COMOR 41	01 07 2011	18 07 2011	ENGLISH CHANNEL	QUINQUIS Jérôme	IFREMER PORT EN BESSIN STATION, Ifremer
Thalia	COPER 12	18 08 2011	26 08 2011	BAY OF BISCAY	LEAUTE Jean-Pierre	IFREMER LA ROCHELLE-L'HOUMEAU STATION, Ifremer
Thalia	COSB2011	02 09 2011	17 09 2011	ENGLISH CHANNEL	HUET Jérôme	STH- FISHERIES SCIENCES AND TECHNOLOGIES DEPARTMENT, Ifremer
Thalia	CREPISD	26 03 2011	05 04 2011	ENGLISH CHANNEL	BLANCHARD Michel	DYNECO/BENTHOS- BENTHIC ECOLOGY LABORATORY, Ifremer
Thalia	EDO	28 01 2011	07 02 2011	BAY OF BISCAY	BLANCHET Aline	DYNECO/BENTHOS- BENTHIC ECOLOGY LABORATORY, Ifremer
Thalia	ESSBASS	24 01 2011	26 01 2011	BAY OF BISCAY	LOSSOUARN Hubert	GENAVIR BREST, Ifremer
Thalia	ESSMER	21 01 2011	21 01 2011	BAY OF BISCAY	Transit with no chief scientist.	GENAVIR BREST, Ifremer
Thalia	ESSTECH_11TH1	09 11 2011	15 11 2011	BAY OF BISCAY	CLEC'H Didier	NSE - VESSELS AND SHIPBOARD SYSTEMS, Ifremer
Thalia	ESSZEN	15 03 2011	17 03 2011	ENGLISH CHANNEL	APPRIOUAL Ronan	GM- MARINE GEOSCIENCES, Ifremer
Thalia	JUVECEPH 1	24 06 2011	30 06 2011	ENGLISH CHANNEL	ROBIN Jean-Paul	LAB. MARINE BIOLOGY AND BIOTECHNOLOGIES - UMR M 100 - LBBM, University of Caen
Thalia	JUVECEPH 2	20 07 2011	26 07 2011	ENGLISH CHANNEL	ROBIN Jean-Paul	LAB. MARINE BIOLOGY AND BIOTECHNOLOGIES - UMR M100 - LBBM, University of Caen
Thalia	NASSE2011	04 05 2011	16 05 2011	BAY OF BISCAY	MEHAULT Sonia	IFREMER LORIENT STATION, Ifremer
Thalia	PLOOPS 2011	09 08 2011	16 08 2011	BAY OF BISCAY	DUBOIS Stanislas	DYNECO- COASTAL ENVIRONMENTAL DYNAMICS DEPT, Ifremer

Vessel	Cruise	Start date	End date	Geographical area	Name of chief scientist	Chief scientist's laboratory
Thalia	REBENT 2011 (MAERL&SABLES FINS)	05 03 2011	14 03 2011	NE ATLANTIC (40 W BOUNDARY)	GENTIL Franck	ROSCOFF BIOLOGICAL STATION, CNRS
Thalia	RECOMOR	02 10 2011	03 10 2011	NE ATLANTIC (40 W BOUNDARY)	TREDUNIT Gilles	GENAVIR BREST, Ifremer
Thalia	RECSOM 2	04 10 2011	05 11 2011	ENGLISH CHANNEL	SIMPLET Laure	GM- MARINE GEOSCIENCES, Ifremer
Thalia	THALAMACOU	18 05 2011	15 06 2011	NE ATLANTIC (40 W BOUNDARY)	EHRHOLD Axel	DYNECO/BENTHOS- BENTHIC ECOLOGY LABORATORY, Ifremer
Thalia	TR_BRECON	09 02 2011	09 02 2011	BAY OF BISCAY	Transit with no chief scientist.	GENAVIR BREST, Ifremer
Thalia	TR_BRECON1	05 04 2011	06 04 2011	BAY OF BISCAY	Transit with no chief scientist.	GENAVIR BREST, Ifremer
Thalia	TR_BRECON2	16 06 2011	16 06 2011	BAY OF BISCAY	Transit with no chief scientist.	GENAVIR BREST, Ifremer
Thalia	TR_BRECON3	28 07 2011	28 07 2011	BAY OF BISCAY	Transit with no chief scientist.	GENAVIR BREST, Ifremer
Thalia	TR_BRESQP	31 08 2011	31 08 2011	NORTHERN ATLANTIC OCEAN	Transit with no chief scientist.	GENAVIR BREST, Ifremer
Thalia	TR_BRETUR	21 09 2011	21 09 2011	BAY OF BISCAY	Transit with no chief scientist.	GENAVIR BREST, Ifremer
Thalia	TR_CDBBRE	27 08 2011	28 08 2011	BAY OF BISCAY	Transit with no chief scientist.	GENAVIR BREST, Ifremer
Thalia	TR_CONBRE	17 05 2011	17 05 2011	BAY OF BISCAY	Transit with no chief scientist.	GENAVIR BREST, Ifremer
Thalia	TR_CONCDB	16 08 2011	17 08 2011	BAY OF BISCAY	Transit with no chief scientist.	GENAVIR BREST, Ifremer
Thalia	TR_CONOUI	22 06 2011	23 06 2011	NORTHERN ATLANTIC OCEAN	Transit with no chief scientist.	GENAVIR BREST, Ifremer

Vessel	Cruise	Start date	End date	Geographical area	Name of chief scientist	Chief scientist's laboratory
Thalia	TR_CONTUR	27 02 2011	27 02 2011	BAY OF BISCAY	Transit with no chief scientist.	GENAVIR BREST, Ifremer
Thalia	TR_DIEBRE	06 11 2011	08 11 2011	NORTHERN ATLANTIC OCEAN	Transit with no chief scientist.	GENAVIR BREST, Ifremer
Thalia	TR_LORBRE	22 01 2011	22 01 2011	BAY OF BISCAY	Transit with no chief scientist.	GENAVIR BREST, Ifremer
Thalia	TR_MALBRE	05 04 2011	05 04 2011	ENGLISH CHANNEL	Transit with no chief scientist.	GENAVIR BREST, Ifremer
Thalia	TR_OUIBRE	26 07 2011	27 07 2011	NORTHERN ATLANTIC OCEAN	Transit with no chief scientist.	GENAVIR BREST, Ifremer
Thalia	TR_ROSSMA	17 03 2011	18 03 2011	ENGLISH CHANNEL	Transit with no chief scientist.	GENAVIR BREST, Ifremer
Thalia	TR_SOPBRE	17 09 2011	17 09 2011	NORTHERN ATLANTIC OCEAN	Transit with no chief scientist.	GENAVIR BREST, Ifremer
Thalia	TR_TURCON	24 09 2011	24 09 2011	BAY OF BISCAY	Transit with no chief scientist.	GENAVIR BREST, Ifremer
Thalia	TR_TURLOR	03 03 2011	04 03 2011	BAY OF BISCAY	Transit with no chief scientist.	GENAVIR BREST, Ifremer

9.2.4. List of cruises with no summary.

In 2011, only one cruise could not be included in the marine research cruise catalogue. No information or summary for the FABLES cruise (TETHYS II) – Chief scientist Françoise SAGE (sage@obs-vlfr.fr) was sent to SISMER. Therefore, no data acquired during that cruise can be accessed via the databases managed by SISMER.

10. Glossary

CNFC	National coastal fleet commission N
CNRS	National centre for scientific research
IOC	Intergovernmental Oceanographic Commission
CSR	Cruise Summary Report (formerly called ROSCOP)
EUROSEISMIC	European Marine Seismic Metadata and Information Centre
EXTRAPLAC	French Continental shelf extension program
GENAVIR	Research vessel management (IFREMER group)
IDM	IT and Marine Data Department
IEO	Spanish oceanography institute
IFREMER	French research institute for exploitation of the sea (formerly ISTPM-CNEXO)
INSU	National institute for sciences of the universe
IODE	International Oceanographic Data and Information Exchange
IPEV	Paul Emile Victor French polar institute
IRD	French research institute for cooperative development (formerly ORSTOM)
ISI	Information systems engineering
MEDAR	Mediterranean Data Archaeology and Rescue
MNHN	National museum of natural history
MFSTEP	Mediterranean Forecasting Toward Environmental Prediction
MTPII/MATER	Mediterranean Targeted Project II/MAss Transfer and Ecosystem Response
ROSCOP	Report of Observation/Samples Collected by Oceanographic Program
ROV	Remote Operated Vehicle
SHOM	French navy hydrographic and oceanographic service
SISMER	Marine scientific information systems
UNESCO	United Nations Educational, Scientific and Cultural Organization
UMS	Joint service unit

11. Acknowledgements

SISMER thanks the chief scientists of the 2011 cruises, the authors of cruise report summaries, and GENAVIR, Jean-Xavier CASTREC, SYLVIE VAN ISEGHEM & Olivier QUÉDEC (IFREMER/DMON), Malika OUDIA (CNFC), Yves GOURIOU & Dominique LOPES (IRD), Hélène LEAU (IPEV) in charge of ship management. They have enabled us to disseminate information and have thus contributed to enhancing the usability and value of the measurements at sea effort.

12. Contacts

IFREMER / SISMER
Marine scientific information systems
Brest Center
BP 70 – 29280 Plouzané
France
Tel. (33)2 98 22 49 16
Fax (33)2 98 22 46 44
E-mail: roscops@ifremer.fr
sismer@ifremer.fr
<http://www.ifremer.fr/sismer/>

Françoise GOURTAY - LE HINGRAT
IDM/SISMER
Tel. (33)2 98 22 41 91
E-mail: [Françoise.Gourtay@ifremer.fr](mailto:Francoise.Gourtay@ifremer.fr)

Published by IFREMER/IDM/SISMER
ISSN 1967-5542
@ Copyright IFREMER