

This discussion paper is/has been under review for the journal Earth System Science Data (ESSD). Please refer to the corresponding final paper in ESSD if available.

Surface Ocean CO₂ Atlas (SOCAT) gridded data products

C. L. Sabine¹, S. Hankin¹, H. Koyuk^{1,2}, D. C. E. Bakker³, B. Pfeil^{4,5,6}, A. Olsen^{7,8}, N. Metzl⁹, A. Kozyr¹⁰, A. Fassbender^{1,20}, A. Manke^{1,2}, J. Malczyk¹¹, J. Akl^{12,13}, S. R. Alin¹, R. G. J. Bellerby^{14,4,*}, A. Borges¹⁵, J. Boutin⁹, P. J. Brown^{3,16}, W.-J. Cai¹⁷, F. P. Chavez¹⁸, A. Chen¹⁹, C. Cosca¹, R. A. Feely¹, M. González-Dávila²¹, C. Goyet²², N. Hardman-Mountford^{23,**}, C. Heinze^{4,5,8,14}, M. Hoppema²⁴, C. W. Hunt²⁵, D. Hydes²⁶, M. Ishii²⁷, T. Johannessen^{4,5}, R. M. Key²⁸, A. Körtzinger²⁹, P. Landschützer³, S. K. Lauvset^{4,5}, N. Lefèvre⁹, A. Lenton¹³, A. Lourantou⁹, L. Merlivat⁹, T. Midorikawa³⁰, L. Mintrop³¹, C. Miyazaki³², A. Murata³³, A. Nakadate³⁴, Y. Nakano³³, S. Nakaoka³⁵, Y. Nojiri³⁵, A. M. Omar^{8,14}, X. A. Padin³⁶, G.-H. Park³⁷, K. Paterson^{12,13}, F. F. Perez³⁶, D. Pierrot³⁷, A. Poisson²², A. F. Ríos³⁶, J. Salisbury²⁵, J. M. Santana-Casiano²¹, V. V. S. S. Sarma³⁸, R. Schlitzer²⁴, B. Schneider³⁹, U. Schuster³, R. Sieger²⁴, I. Skjelvan^{5,14,4}, T. Steinhoff²⁹, T. Suzuki⁴⁰, T. Takahashi⁴¹, K. Tedesco^{42,***}, M. Telszewski^{43,***}, H. Thomas⁴⁴, B. Tilbrook^{12,13,45}, D. Vandemark²⁵, T. Veness¹³, A. J. Watson³, R. Weiss⁴⁶, C. S. Wong⁴⁷, and H. Yoshikawa-Inoue³³

¹Pacific Marine Environmental Laboratory, National Oceanic and Atmospheric Administration, Seattle, Washington, USA

Title Page

Abstract

Instruments

Data Provenance & Structure

Tables

Figures

◀

▶

◀

▶

Back

Close

Full Screen / Esc

Printer-friendly Version

Interactive Discussion



- ²Joint Institute for the Study of the Atmosphere and Ocean, University of Washington, Seattle, Washington, USA
- ³School of Environmental Sciences, University of East Anglia, Norwich, UK
- ⁴Geophysical Institute, University of Bergen, Bergen, Norway
- ⁵Bjerknes Centre for Climate Research, Bergen, Norway
- ⁶PANGAEA Data Publisher for Earth & Environmental Science, University of Bremen, Bremen, Germany
- ⁷Institute of Marine Research, Bergen, Norway
- ⁸Uni Bjerknes Centre, Bergen, Norway
- ⁹Université Pierre et Marie Curie, LOCEAN/IPSL, Paris, France
- ¹⁰Carbon Dioxide Information Analysis Center, Oak Ridge, Tennessee, USA
- ¹¹Jetz Laboratory, Department of Ecology and Evolutionary Biology, Yale University, New Haven, Connecticut, USA
- ¹²CSIRO Wealth from Oceans Flagship, Hobart, Tasmania, Australia
- ¹³Centre for Australian Weather and Climate Research, Hobart, Tasmania, Australia
- ¹⁴Uni Research AS, Bergen, Norway
- ¹⁵University of Liège, Chemical Oceanography Unit, Institut de Physique, Liège, Belgium
- ¹⁶British Antarctic Survey, Cambridge, UK
- ¹⁷Department of Marine Sciences, University of Georgia, Athens, Georgia, USA
- ¹⁸Monterey Bay Aquarium Research Institute, Moss Landing, California, USA
- ¹⁹Institute of Marine Geology and Chemistry, National Sun Yat-sen University, Kaohsiung, Taiwan
- ²⁰School of Oceanography, University of Washington, Seattle, Washington, USA
- ²¹Universidad de Las Palmas de Gran Canaria, Facultad de Ciencias del Mar, Las Palmas de Gran Canaria, Spain
- ²²Institut de Modélisation et d'Analyse en Géo-Environnement et Santé, Université de Perpignan, Perpignan, France
- ²³CSIRO, Marine and Atmospheric Research, Wembley, Western Australia, Australia
- ²⁴Alfred Wegener Institute for Polar and Marine Research, Bremerhaven, Germany
- ²⁵Ocean Process Analysis Lab, University of New Hampshire, Durham, New Hampshire, USA
- ²⁶National Oceanography Centre, Southampton, UK

**Surface Ocean CO₂
Atlas**

C. L. Sabine et al.

Title Page

Abstract

Instruments

Data Provenance & Structure

Tables

Figures

◀

▶

◀

▶

Back

Close

Full Screen / Esc

Printer-friendly Version

Interactive Discussion



- ²⁷ Japan Meteorological Agency, Meteorological Research Institute, Tsukuba, Japan
- ²⁸ Atmospheric and Oceanic Sciences, Princeton University, Princeton, New Jersey, USA
- ²⁹ GEOMAR, Helmholtz Centre for Ocean Research, Kiel, Germany
- ³⁰ Nagasaki Marine Observatory, Nagasaki, Japan
- ³¹ MARIANDA, Kiel, Germany
- ³² Environmental Earth Science, Hokkaido University, Hokkaido, Japan
- ³³ Japan Agency for Marine-Earth Science and Technology, Yokosuka, Japan
- ³⁴ Marine Division, Global Environment and Marine Department, Japan Meteorological Agency, Tokyo, Japan
- ³⁵ National Institute for Environmental Studies, Tsukuba, Japan
- ³⁶ Instituto de Investigaciones Marinas de Vigo, Consejo Superior de Investigaciones Científicas, Vigo, Spain
- ³⁷ Cooperative Institute for Marine and Atmospheric Studies, Rosenstiel School for Marine and Atmospheric Science, University of Miami, Miami, Florida, USA
- ³⁸ National Institute of Oceanography, Regional Centre, Visakhapatnam, India
- ³⁹ Leibnitz Research Institute for Baltic Sea Research, Warnemünde, Germany
- ⁴⁰ Marine Information Research Center, Japan Hydrographic Association, Tokyo, Japan
- ⁴¹ Lamont Doherty Earth Observatory, Palisades, New York, USA
- ⁴² International Ocean Carbon Coordination Project (IOCCP), Silver Spring, Maryland, USA
- ⁴³ International Ocean Carbon Coordination Project (IOCCP), Institute of Oceanology of Polish Academy of Sciences, Sopot, Poland
- ⁴⁴ Department of Oceanography, Dalhousie University, Halifax Nova Scotia, Canada
- ⁴⁵ Antarctic Climate and Ecosystems Cooperative Research Centre, Hobart, Tasmania, Australia
- ⁴⁶ Scripps Institution of Oceanography, La Jolla, California, USA
- ⁴⁷ Institute of Ocean Sciences, Sidney, British Columbia, Canada
- * now at: Norwegian Institute for Water Research, Bergen, Norway
- ** formerly at: Plymouth Marine Laboratory, Plymouth, UK
- *** formerly at: International Ocean Carbon Coordination Project (IOCCP), Intergovernmental Oceanographic Commission of UNESCO, Paris, France

Surface Ocean CO₂
Atlas

C. L. Sabine et al.

Title Page

Abstract

Instruments

Data Provenance & Structure

Tables

Figures

◀

▶

◀

▶

Back

Close

Full Screen / Esc

Printer-friendly Version

Interactive Discussion



Received: 26 June 2012 – Accepted: 9 July 2012 – Published: 14 August 2012

Correspondence to: C. L. Sabine (chris.sabine@noaa.gov)

Published by Copernicus Publications.

Discussion Paper | Discussion Paper | Discussion Paper | Discussion Paper | Discussion Paper

ESSDD

5, 781–804, 2012

**Surface Ocean CO₂
Atlas**

C. L. Sabine et al.

Title Page

Abstract

Instruments

Data Provenance & Structure

Tables

Figures



Back

Close

Full Screen / Esc

Printer-friendly Version

Interactive Discussion



Abstract

A well documented, publicly available, global data set for surface ocean carbon dioxide (CO_2) parameters has been called for by international groups for nearly two decades. The Surface Ocean CO_2 Atlas (SOCAT) project was initiated by the international marine carbon science community in 2007 with the aim of providing a comprehensive, publicly available, regularly updated, global data set of marine surface CO_2 , which had been subject to quality control (QC). SOCAT version 1.5 was made public in September 2011 and holds 6.3 million quality controlled surface CO_2 data from the global oceans and coastal seas, spanning four decades (1968–2007). The SOCAT gridded data is the second data product to come from the SOCAT project. Recognizing that some groups may have trouble working with millions of measurements, the SOCAT gridded product was generated to provide a robust regularly spaced $f\text{CO}_2$ product with minimal spatial and temporal interpolation which should be easier to work with for many applications. Gridded SOCAT is rich with information that has not been fully explored yet, but also contains biases and limitations that the user needs to recognize and address.

Data coverage and parameter measured

Repository-Reference: doi:10.3334/CDIAC/OTG.SOCAT_V1.5_GRID

Available at: SOCAT project page and data access: <http://www.socat.info>

Coverage: 80° S to 80° N; 0° E to 180° W

Location Name: Global Ocean

Date/Time Start: February 1970

Date/Time End: December 2007

ESSDD

5, 781–804, 2012

Surface Ocean CO_2 Atlas

C. L. Sabine et al.

Title Page

Abstract

Instruments

Data Provenance & Structure

Tables

Figures

◀

▶

◀

▶

Back

Close

Full Screen / Esc

Printer-friendly Version

Interactive Discussion



1 Introduction

Human industrial and agricultural activities have caused the global atmospheric carbon dioxide (CO₂) concentration to increase from about 280 parts per million (ppm) prior to the industrial revolution to a 2011 value of about 390 ppm (Tans et al., NOAA/ESRL, www.esrl.noaa.gov/gmd/ccgg/trends/). Atmospheric CO₂ concentrations are now higher than experienced on Earth for more than 800 000 yr and are expected to continue increasing in the foreseeable future (Lüthi et al., 2008). The rate of CO₂ release into the atmosphere is also thought to be unprecedented in Earth history (Kump et al., 2009). As of the mid 1990s, the oceans had absorbed approximately half of the CO₂ released from fossil fuel use and cement manufacturing over previous 200 yr (Sabine et al., 2004). As a consequence of ocean CO₂ uptake, the chemistry of the oceans is presently changing at a rate exceeding any believed to have occurred for at least the past 20 million years (Feely et al., 2004).

Although the magnitude of the CO₂ uptake by the ocean presently is reasonably well constrained by models and observations (e.g., Gruber et al., 2009), the inter-annual variability of the CO₂ flux is still poorly known. Knowledge of variability is of particular importance to predict changes in the ocean-atmosphere fluxes in response to global change, and lack of this knowledge currently limits our ability to accurately verify the partitioning of fossil fuel CO₂ between the ocean and the terrestrial biosphere and to realistically estimate future atmospheric CO₂ levels. To document the changing patterns of air-sea CO₂ exchange requires an extensive observational program.

The ocean CO₂ research community has responded by initiating internationally organized observation programs and the number of annual surface CO₂ observations has been growing exponentially since the 1960s such that today well over one million observations are reported to data centers each year (Sabine et al., 2010). The latest published global flux map, based on a compilation of approximately three million measurements collected between 1970 and 2007, provides information on the monthly

Title Page

Abstract

Instruments

Data Provenance & Structure

Tables

Figures

◀

▶

◀

▶

Back

Close

Full Screen / Esc

Printer-friendly Version

Interactive Discussion



patterns of air-sea CO₂ fluxes during a “normal” non-El Niño year taken to be 2000 (Takahashi et al., 2009).

The tremendous increase in the number of annual observations provides exciting opportunities to look at the patterns of air-sea CO₂ fluxes in greater detail and to understand the seasonal to inter-annual variations and the mechanisms controlling them. As a complement to Takahashi’s work to update the CO₂ climatology, there is an ongoing international effort to synthesize all the available surface CO₂ data into a quality controlled data base, along with uniform metadata, that can be used to examine surface CO₂ variability over a range of time and space scales (SOCAT; <http://www.socat.info/>).

The core Surface Ocean CO₂ Atlas (SOCAT) data set (version 1.5) is a global compilation of underway surface water CO₂ data with 7.8 million measurements (6.3 million with *f*CO₂ values) from 1851 cruises run between 1968 and 2007 by more than 10 countries (Fig. 1). SOCAT brings together, in a common format, all publicly available surface ocean CO₂ data, including the Arctic and the coastal seas. All measurements are evaluated for data quality using methods that are transparent and fully documented (Pfeil et al., 2012). The observations in the core SOCAT data set are sparse and unevenly distributed in time and space. To simplify exploration of the information from the collection of observations, a standard gridded representation of the SOCAT data with minimal interpolation was generated. The gridded product contains mean and extreme *f*CO₂ (CO₂ fugacity) values for every 1° × 1° grid cell (1/4° × 1/4° for coastal regions) that had measurements in a given month. Grid cells with no measurements in a given month and year were left blank. Reducing the original data down to 1° × 1° average values will facilitate comparisons with models and analyses of large scale patterns of variability.

2 Data set construction

The construction of the core SOCAT data set is described in detail by Pfeil et al. (2012), so only a basic description is given here. The SOCAT data set was compiled from

ESSDD

5, 781–804, 2012

Surface Ocean CO₂ Atlas

C. L. Sabine et al.

Title Page

Abstract

Instruments

Data Provenance & Structure

Tables

Figures

◀

▶

◀

▶

Back

Close

Full Screen / Esc

Printer-friendly Version

Interactive Discussion



data sets of surface CO₂ measurements made through 2007 which were either publicly available or obtained upon request. These include measurements from research ships, volunteer observing ships and CO₂ moorings. Once collected, all files had to be put into a common format. This involved not only restructuring the data columns, but recalculating the *f*CO₂ values using standardized approaches (Pierrot et al, 2009). Missing parameters like salinity and atmospheric pressure were extracted from standard global datasets (WOA 2005 – Antonov et al., 2006 and NCEP/NCAR – Kalnay et al., 1996), in addition to bathymetry added from ETOPO2. To ensure that each cruise was given a unique identifier in the database, all cruises were given an EX-POCODE that identifies the vessel, country, and date of the first cruise measurements (e.g., 06MT19910903 = German cruise on the *Meteor* starting 3 September 1991).

An initial set of quality control checks were performed to identify any unrealistic information (e.g., sample locations on land, dates and times that do not exist), any large “fliers” in the data and any duplicated data or cruise information. Where problems were discovered, the initial quality control checks resulted either in the removal of entire cruises (e.g., in the case of a duplicated cruise) or in the flagging of individual data points with a bad or questionable value. Although the flagging of individual data points can be somewhat subjective, we made an effort to be very conservative and only flag observations that were well beyond realistic values. Flag numbers 2, 3, and 4 were used to indicate good, questionable, and bad values, respectively.

For the second level quality control checks, the database was divided into regions: North Atlantic (including Arctic), Tropical Atlantic, North Pacific, Tropical Pacific, Indian Ocean, Southern Ocean, and coastal. Small groups of carbon scientists that specialize in each region were given responsibility for examining the data quality in each region. Standardized procedures and tools were used for the 2nd level quality control (2nd QC) in each of the regions. These evaluations included a careful assessment of the metadata to determine if the best practice methods (Dickson et al., 2007) were followed and properly documented. The *f*CO₂ data were also examined for consistent patterns and reasonable or expected thermodynamic relationships when compared to

Surface Ocean CO₂
Atlas

C. L. Sabine et al.

Title Page

Abstract

Instruments

Data Provenance & Structure

Tables

Figures

◀

▶

◀

▶

Back

Close

Full Screen / Esc

Printer-friendly Version

Interactive Discussion



measured temperature and salinity. Data consistency was also assessed by comparing measurements from multiple cruises in the same area at about the same time. The regional groups used their scientific experience in the area to determine the appropriate time and space scales for the consistency evaluations.

5 Cruises were categorized as A–D, F, S or X based on the evaluations by the regional groups (Olsen and Metzl, 2010). There are four categories of generally acceptable data that range from A (followed approved methods, metadata documentation complete, 2nd QC performed and deemed acceptable, and comparison with other data performed and deemed acceptable) to D (unsure whether approved methods were completely
10 followed, metadata documentation was incomplete, but 2nd QC was performed and deemed acceptable). There are three categories of data that were not deemed acceptable in their current form. Category F is for data where the 2nd QC revealed problems with data quality. Category S is for cruises that are temporarily suspended because the data contains unacceptable problems but are in the process of being updated by
15 the data provider. The intent is that these cruises will be included in the next version of SOCAT. Category X is for data that have been excluded, for example if they are a duplicate of an existing SOCAT data set.

Because of the extensive amount of work involved in formatting and carefully checking data quality, no data collected after December 2007 were added to this (first) release of the database. After each of the regional groups had categorized all of the
20 cruises, a global group examined the entire database for consistency and resolved occasional conflicts between regional assessments of cruises that crossed regional boundaries.

3 Mapping procedures

25 The gridded SOCAT product was derived by combining all SOCAT v1.5 data collected within a $1^\circ \times 1^\circ$ box during a specific month (e.g., between $60\text{--}61^\circ\text{N}$, $30\text{--}31^\circ\text{W}$, for January 2007). Data within 400 km of a significant land mass were assigned to the

Surface Ocean CO₂
Atlas

C. L. Sabine et al.

Title Page

Abstract

Instruments

Data Provenance & Structure

Tables

Figures

◀

▶

◀

▶

Back

Close

Full Screen / Esc

Printer-friendly Version

Interactive Discussion



coastal region and were grouped into $1/4^\circ \times 1/4^\circ$ boxes. Only data with an initial quality control flag of “2” and secondary quality flag between “A” and “D” were included. Grid cells that had no measurements in a given month were not assigned a value.

The primary purpose of the gridding is to provide regularly spaced $f\text{CO}_2$ values that can be used for mapping, creating comparisons to models, or in other applications where highly structured values would be useful. The choice of grid size and temporal resolution was intended to stay within the average correlation length scale for surface ocean CO_2 and provide a product that could be directly combined with other routine gridded products available at the same resolution (e.g., World Ocean Atlas).

Two types of $f\text{CO}_2$ values are reported: an unweighted mean and a cruise weighted mean. Measurements collected from different ships can have very different temporal resolutions. Some ships record values every minute and others only take a reading once per hour. If two cruises pass through the same grid cell, one with one minute resolution and another with one hour resolution, the mean of all the measurements would be strongly biased toward the higher resolution data set. In some cases this biasing may not be appropriate. Therefore, the cruise weighted mean first averages all the data obtained on a given cruise within a grid cell, and then averages the cruise means within the grid cell. This gives equal weight to all the cruises regardless of the original temporal resolution. Generally these values are very similar, but in some grid cells there are significant differences.

Other diagnostic information is also included to help the user understand any implicit biases in the data. For example, the total number of cruises and the total number of observations within a grid cell are provided. Technically, only one measurement is required to produce a value in a grid cell. One could argue that one measurement cannot adequately represent an entire $1^\circ \times 1^\circ$ area over a whole month. With the cruise and total number of observations, one could designate a minimum number of cruises or data required to make an acceptable average and filter the data accordingly.

The minimum, maximum, and standard deviation of the $f\text{CO}_2$ values within each grid cell are also provided. These values can supply useful information on the distribution of

ESSDD

5, 781–804, 2012

Surface Ocean CO_2 Atlas

C. L. Sabine et al.

Title Page

Abstract

Instruments

Data Provenance & Structure

Tables

Figures

◀

▶

◀

▶

Back

Close

Full Screen / Esc

Printer-friendly Version

Interactive Discussion



data within a grid cell. For example, Fig. 2 shows the distribution of the non-zero standard deviations of the weighted and unweighted $f\text{CO}_2$ values. The average standard deviation of all the non-zero unweighted mean $f\text{CO}_2$ values is $5\ \mu\text{atm}$. The average standard deviation for the cruise weighted mean is only slightly lower at $4.9\ \mu\text{atm}$. The relatively low standard deviations suggest that the average values are reasonably robust.

Another potential issue with the mean $f\text{CO}_2$ values is whether the cruises adequately cover the grid cell area. To assess the area covered, the average latitude and longitude offset from cell center was calculated. If the maximum deviation from the center point is 0.5 in latitude and longitude, then a triangle with a hypotenuse of m gives the maximum possible offset ($m = (0.5^2 + 0.5^2)^{0.5} = 0.7071$). The average combined offset for all grid cells was 0.34 ± 0.14 representing a standard Gaussian distribution of cruise locations in the cells (Fig. 3).

4 Spatial and temporal coverage

The number of CO_2 measurements made in the surface ocean annually has increased dramatically over the past 40 yr. Between the early 1990s and the early 2000s, approximately 900 000 new measurements in total were added to the database. Today, nearly a million measurements are collected every year. Figure 4 shows a map of the total number of surface $f\text{CO}_2$ values per grid cell over the observational period and the percentage of surface ocean grid cells per latitude band sampled over this time. At $\sim 30^\circ\text{N}$, nearly 100 % of the surface ocean grids have been sampled at least once within the nearly 40 yr time period covered in this data set. The North Atlantic and North Pacific have at least some measurements in the majority of grid cells. The best coverage appears to be in the high latitude North Atlantic and in the Equatorial Pacific. A much smaller percentage has been covered in the Southern Hemisphere (generally around 50%). The map reveals some very significant areas in the South Pacific, Indian and

Title Page

Abstract

Instruments

Data Provenance & Structure

Tables

Figures

◀

▶

◀

▶

Back

Close

Full Screen / Esc

Printer-friendly Version

Interactive Discussion



even Atlantic that have no observations over this time period (white spaces in Fig. 4). Breaking the data down into seasons or months shows even more sporadic coverage.

The monthly and seasonal variability can be explored in the 12 month climatology data product. This product averages all $f\text{CO}_2$ values in a given grid cell for each month regardless of the year. Figure 5 shows the number of unique months out of the year that a grid cell has observations in the nearly 40 yr data base. While spatial coverage has increased dramatically over the last few decades, a majority of the surface ocean has only been sampled for $f\text{CO}_2$ during one month out of the year (blue colors in Fig. 5). The volunteer observing ship (VOS) effort to put underway CO_2 instruments onto commercial ships has dramatically increased total number of observations each year and the monthly coverage along certain shipping lines (red colors in Fig. 5); however, the figure also illustrates the need for even more observations, particularly in the Southern Hemisphere.

5 Decadal trends

To facilitate the exploration and use of the temporal richness of SOCAT, the monthly gridded data have also been binned into annual and decadal averages. Figure 6 shows histograms of the decadal mean $f\text{CO}_2$ values for each decade globally as well as broken down into the Northern Hemisphere and Southern Hemisphere. As atmospheric CO_2 increases with time so do the peak histogram $f\text{CO}_2$ values. This increase is expected since globally the surface water CO_2 is thought to track the atmospheric increase (Takahashi et al., 2009). However, one must be careful to remember that since there is essentially no interpolation in this data set, there are spatial and temporal biases inherent in these gridded products. For example, the data from the 1970s appear to show a bimodal distribution but this is likely an artifact of the limited data coverage at that time.

Title Page

Abstract

Instruments

Data Provenance & Structure

Tables

Figures

◀

▶

◀

▶

Back

Close

Full Screen / Esc

Printer-friendly Version

Interactive Discussion



6 Comparison to previous work

This product is meant to complement the similar products available to the community. This is the most comprehensive collection of surface CO₂ data available as it is compiled with all publicly available data using transparent quality control procedures. There is no explicit interpolation in time or space during gridding, which keeps the gridded product as close to the original data as possible. The only other data set with comparable quantity and quality control checks is the *p*CO₂ climatology of Takahashi et al. (2009).

To generate the well known Takahashi climatology, all data had to be normalized to a common non El Niño year and interpolated in space to fill the entire grid (Takahashi et al., 2009). While these steps were important to generate a robust fully covered map, much of the temporal richness of the data was lost and uncertainty was introduced with the time and space interpolation approaches. The SOCAT product has many of the same original data as the Takahashi data set, but the objective was not to generate a climatology representing a single year. The SOCAT gridded product can be used to further investigate the seasonal, inter-annual and decadal variability in the data set. It also allows the community to explore alternative ways of making the time and space interpolations required to generate global flux maps.

The grid cell structure was selected to coincide with the World Ocean Atlas and GLODAP gridded products (e.g., Garcia et al., 2010; Key et al., 2004). This will allow direct comparison of synthesis products that can be used to investigate controls on surface CO₂ and drivers of variability. Care must be taken, however, when comparing products from different sources that may represent different time and space scales.

The grid is also easily adapted for direct comparison with a range of numerical model products. The hope is that these data will provide important initialization and validation fields for a range of carbon cycle models. The use of standardized formatting and consistent approaches for compiling the data and making standardized calculations

ESSDD

5, 781–804, 2012

Surface Ocean CO₂ Atlas

C. L. Sabine et al.

Title Page

Abstract

Instruments

Data Provenance & Structure

Tables

Figures

◀

▶

◀

▶

Back

Close

Full Screen / Esc

Printer-friendly Version

Interactive Discussion



should make the data more accessible to those that do not work with carbon data every day.

7 On-line access to SOCAT gridded data and services

The gridded fields of Table 1 are available from the SOCAT project page at <http://www.socat.info>, with guidance on using and citing the data. The project Web page also features an on-line gridded data viewer based upon the NOAA/PMEL Live Access Server (LAS) (Hankin et al., 2002). The viewer provides custom visualizations of the data such as maps and time series plots, and performs simple analyses such as averages computed over time ranges or spatial areas. A short instructional video is available on the SOCAT project Web page. Figure 1 is an example product of this system – a time average of the 12-month gridded climatology product.

8 Conclusions

The SOCAT gridded data is the second data product to come from the SOCAT project. The first was a quality controlled data set at the originally collected time and space resolution with 6.3 million $f\text{CO}_2$ observations collected between 1968 and 2007. Recognizing that some groups may have trouble working with millions of measurements, the SOCAT gridded product was generated to provide a robust regularly spaced $f\text{CO}_2$ product with minimal spatial and temporal interpolation which should be easier to work with for many applications. Gridded SOCAT is rich with information that has not been fully explored yet, but also contains biases and limitations that the user needs to recognize and address.

Despite this synthesis effort, understanding surface CO_2 variability is still a data limited problem. More data are being collected every day. Plans are in the works to update the current SOCAT with more data. As future SOCAT data sets become available,

ESDD

5, 781–804, 2012

Surface Ocean CO_2 Atlas

C. L. Sabine et al.

Title Page

Abstract

Instruments

Data Provenance & Structure

Tables

Figures

◀

▶

◀

▶

Back

Close

Full Screen / Esc

Printer-friendly Version

Interactive Discussion



the SOCAT gridded product will also be updated. Further automation of data submission and quality control in SOCAT will enable future, prompt SOCAT releases. To keep abreast of the latest developments in SOCAT, please visit www.SOCAT.info.

Acknowledgements. SOCAT is promoted by IOCCP, the Surface Ocean Lower Atmosphere Study, and the Integrated Marine Biogeochemistry and Ecosystem Research program. Douglas Wallace (Dalhousie University, Canada and former SOLAS chair) has strongly encouraged SOCAT. Support has been received from the University of Bergen (Norway), the Bjerknes Centre for Climate Research (Norway), the National Oceanic and Atmospheric Administration (United States), the University of Washington (United States), Oak Ridge National Laboratory (United States), the University of East Anglia (United Kingdom), PANGAEA – Data Publisher for Earth & Environmental data (Germany), the Alfred Wegener Institute for Polar and Marine Research (Germany), the Centre National de la Recherche Scientifique (France), the CarboOcean (Norway, GOCE 511176-1) and CarboChange (Norway, FP7 264879) projects of the European Union, the US National Science Foundation (United States, OCE-1068958), the international Scientific Committee on Oceanic Research (SCOR, United States, OCE-0938349), and the UK Ocean Acidification Research Programme (NE/H017046/1; funded by the Natural Environment Research Council, the Department for Energy and Climate Change and the Department for Environment, Food and Rural Affairs). Support for SOCAT meetings has been received from IOCCP, IMBER, the European Cooperation in Science and Technology (COST) Action 735 (United Kingdom), Geomar (Germany), the National Institute for Environmental Studies (Japan), and the Commonwealth Scientific and Industrial Research Organisation (Australia).

References

- Antonov, J. I., Locarnini, R. A., Boyer, T. P., Mishonov, A. V., and Garcia, H. E.: World Ocean Atlas 2005, in: Volume 2: Salinity, edited by: Levitus, S., NOAA Atlas NESDIS 62, US Government Printing Office, Washington, D.C., 182 pp., 2006.
- Dickson, A. G., Sabine, C. L., and Christian, J. R. (Eds.): Guide to best practices for ocean CO₂ measurements, PICES Special Publication, 3, 191 pp., 2006.
- Feely, R. A., Sabine, C. L., Lee, K., Berelson, W., Kleypas, J., Fabry, V. J., and Millero, F. J.: Impact of anthropogenic CO₂ on the CaCO₃ system in the oceans, *Science*, 305, 362–366, 2004.

ESSDD

5, 781–804, 2012

Surface Ocean CO₂ Atlas

C. L. Sabine et al.

Title Page

Abstract

Instruments

Data Provenance & Structure

Tables

Figures

◀

▶

◀

▶

Back

Close

Full Screen / Esc

Printer-friendly Version

Interactive Discussion



Surface Ocean CO₂
Atlas

C. L. Sabine et al.

Title Page

Abstract

Instruments

Data Provenance & Structure

Tables

Figures

◀

▶

◀

▶

Back

Close

Full Screen / Esc

Printer-friendly Version

Interactive Discussion



Garcia, H. E., Locarnini, R. A., Boyer, T. P., Antonov, J. I., Zweng, M. M., Baranova, O. K., and Johnson, D. R.: World Ocean Atlas 2009, in: Volume 4: Nutrients (phosphate, nitrate, silicate), edited by: Levitus, S., NOAA Atlas NESDIS 71, US Government Printing Office, Washington, D.C., 398 pp., 2010.

5 Gruber, N., Gloor, M., Mikaloff Fletcher, S. E., Doney, C. S., Dutkiewicz, S., Follows, M. J., Gerber, M., Jacobsen, A. R., Joos, F., Lindsay, K., Menemenlis, D., Mouchet, A., Müller, S. A., Sarmiento, J. L., and Takahashi, T.: Ocean sources, sinks, and transport of atmospheric CO₂, *Global Biogeochem. Cy.*, 23, GB1005, doi:10.1029/2008GB003349, 2009.

10 Hankin, S. C., Sirott, J., Callahan, J., O'Brien, K., and Manke, A.: Live Access Server: A tool for web access to in situ data, too, Proceedings of 18th Conference on Interactive Information and Processing Systems (IIPS) for Meteorology, Oceanography, and Hydrology, AMS, Orlando, FL, 13–17 January 2002, J55–J56, 2002.

Kalnay, E., Kanamitsu, M., Kistler, R., Collins, W., Deaven, D., Gandin, L., Iredell, M., Saha, S., White, G., Woollen, J., Zhu, Y., Chelliah, M., Ebisuzaki, W., Higgins, W., Janowiak, J., Mo, K. C., Ropelewski, C., Wang, J., Leetmaa, A., Reynolds, R., Jenne, R., and Joseph, D.: The NCEP/NCAR 40-year reanalysis project, *B. Am. Meteorol. Soc.*, 77, 437–470, 1996.

15 Key, R. M., Kozyr, A., Sabine, C. L., Lee, K., Wanninkhof, R., Bullister, J. L., Feely, R. A., Millero, F. J., and Peng, T.-H.: A global ocean carbon climatology: Results from GLODAP, *Global Biogeochem. Cy.*, 18, GB4031, doi:10.1029/2004GB002247, 2004.

20 Kump, L. R., Bralower, T. J., and Ridgwell, A.: Ocean acidification in deep time, *Oceanography*, 22, 94–107, 2009.

Lüthi, D., Le Floch, M., Bereiter, B., Blunier, T., Barnola, J.-M., Siegenthaler, U., Raynaud, D., Jouzel, J., Fischer, H., Kawamura, K., and Stocker, T. F.: High-resolution carbon dioxide concentration record 650,000–800,000 years before present, *Nature*, 453, 379–382, 2008.

25 Olsen, A. and Metzl, N.: SOCAT QC cookbook for SOCAT participants; available at: www.socat.info/publications.html, last access: 11 March 2012, 2009.

Pfeil, B., Olsen, A., Bakker, D. C. E., Hankin, S., Koyuk, H., Kozyr, A., Malczyk, J., Manke, A., Metzl, N., Sabine, C. L., Akl, J., Alin, S. R., Bellerby, R. G. J., Borges, A., Boutin, J., Brown, P. J., Cai, W.-J., Chavez, F. P., Chen, A., Cosca, C., Fassbender, A. J., Feely, R. A., González-Dávila, M., Goyet, C., Hardman-Mountford, N., Heinze, C., Hood, M., Hoppema, M., Hunt, C. W., Hydes, D., Ishii, M., Johannessen, T., Jones, S. D., Key, R. M., Körtzinger, A., Landschützer, P., Lauvset, S. K., Lefèvre, N., Lenton, A., Lourantou, A., Merlivat, L., Midorikawa, T., Mintrop, L., Miyazaki, C., Murata, A., Nakadate, A., Nakano, Y., Nakaoka,

Surface Ocean CO₂
Atlas

C. L. Sabine et al.

Title Page

Abstract

Instruments

Data Provenance & Structure

Tables

Figures

◀

▶

◀

▶

Back

Close

Full Screen / Esc

Printer-friendly Version

Interactive Discussion



S., Nojiri, Y., Omar, A. M., Padin, X. A., Park, G.-H., Paterson, K., Perez, F. F., Pierrot, D., Poisson, A., Ríos, A. F., Santana-Casiano, J. M., Salisbury, J., Sarma, V. V. S. S., Schlitzer, R., Schneider, B., Schuster, U., Sieger, R., Skjelvan, I., Steinhoff, T., Suzuki, T., Takahashi, T., Tedesco, K., Telszewski, M., Thomas, H., Tilbrook, B., Tjiputra, J., Vandemark, D., Veness, T., Wanninkhof, R., Watson, A. J., Weiss, R., Wong, C. S., and Yoshikawa-Inoue, H.: A uniform, quality controlled Surface Ocean CO₂ Atlas (SOCAT), Earth Syst. Sci. Data Discuss., 5, 735–780, doi:10.5194/essdd-5-735-2012, 2012.

Pierrot, D., Neill, C., Sullivan, K., Castle, R., Wanninkhof, R., Lüger, H., Johannessen, T., Olsen, A., Feely, R. A., and Cosca, C. E.: Recommendations for autonomous underway *p*CO₂ measuring systems and data reduction routines, Deep-Sea Res. Pt. II, 56, 512–522, 2009.

Sabine, C. L., Feely, R. A., Gruber, N., Key, R. M., Lee, K., Bullister, J. L., Wanninkhof, R., Wong, C. S., Wallace, D. W. R., Tilbrook, B., Millero, F. J., Peng, T.-H., Kozyr, A., Ono, T., and Rios, A. F.: The oceanic sink for anthropogenic CO₂, Science, 305, 367–371, 2004.

Sabine, C. L., Ducklow, H., and Hood, M.: International carbon coordination: Roger Revelle's legacy in the Intergovernmental Oceanographic Commission, Oceanography, 23, 48–61, 2010.

Takahashi, T., Sutherland, S. C., Wanninkhof, R., Sweeney, C., Feely, R. A., Chipman, D. W., Hales, B., Friederich, G., Chavez, F., Sabine, C., Watson, A., Bakker, D. C. E., Schuster, U., Metzl, N., Yoshikawa-Inoue, H., Ishii, M., Midorikawa, T., Nojiri, Y., Körtzinger, A., Steinhoff, T., Hopenma, M., Olafsson, J., Arnarson, T. S., Tilbrook, B., Johannessen, T., Olsen, A., Bellerby, R., Wong, C. S., Delille, B., Bates, N. R., and de Baar, H. J. W.: Climatological mean and decadal change in surface ocean *p*CO₂, and net sea-air CO₂ flux over the global oceans, Deep-Sea Res. Pt. II, 56, 554–577, 2009.

Surface Ocean CO₂
Atlas

C. L. Sabine et al.

Table 1. Gridded products and available parameters for SOCAT (v1.5).

Product	12 month Climatology	Decadal Average	Annual Average	Monthly Average	Monthly ¼° x ¼° Coastal
Parameter [#]	# of Cruises	# of Cruises	# of Cruises	# of Cruises	# of Cruises
Parameter [#]	# of Observations	# of Observations	# of Observations	# of Observations	# of Observations
Parameter [µatm]	<i>f</i> CO ₂ mean unweighted	<i>f</i> CO ₂ mean unweighted	<i>f</i> CO ₂ mean unweighted	<i>f</i> CO ₂ mean unweighted	<i>f</i> CO ₂ mean unweighted
Parameter [µatm]	<i>f</i> CO ₂ mean by cruise	<i>f</i> CO ₂ mean by cruise	<i>f</i> CO ₂ mean by cruise	<i>f</i> CO ₂ mean by cruise	<i>f</i> CO ₂ mean by cruise
Parameter [µatm]	<i>f</i> CO ₂ max	<i>f</i> CO ₂ max	<i>f</i> CO ₂ max	<i>f</i> CO ₂ max	<i>f</i> CO ₂ max
Parameter [µatm]	<i>f</i> CO ₂ min	<i>f</i> CO ₂ min	<i>f</i> CO ₂ min	<i>f</i> CO ₂ min	<i>f</i> CO ₂ min
Parameter [µatm]	–	–	–	<i>f</i> CO ₂ st. dev. unweighted	<i>f</i> CO ₂ st. dev. unweighted
Parameter [µatm]	–	–	–	<i>f</i> CO ₂ st. dev. by cruise	<i>f</i> CO ₂ st. dev. by cruise
Parameter [° N]	–	–	–	Lat. average offset from cell center	Lat. average offset from cell center
Parameter [° E]	–	–	–	Lon. average offset from cell center	Lon. average offset from cell center

Title Page

Abstract

Instruments

Data Provenance & Structure

Tables

Figures

◀

▶

◀

▶

Back

Close

Full Screen / Esc

Printer-friendly Version

Interactive Discussion



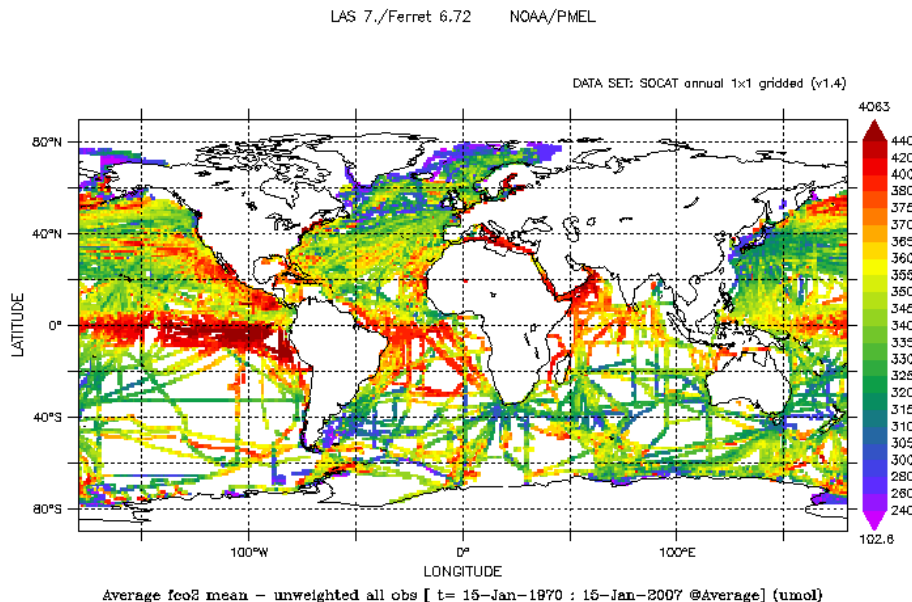


Fig. 1. Map of the mean unweighted surface water $f\text{CO}_2$ (μatm) based on all data in SOCAT database as generated by the online Live Access Server.

Title Page

Abstract

Instruments

Data Provenance & Structure

Tables

Figures



Back

Close

Full Screen / Esc

Printer-friendly Version

Interactive Discussion



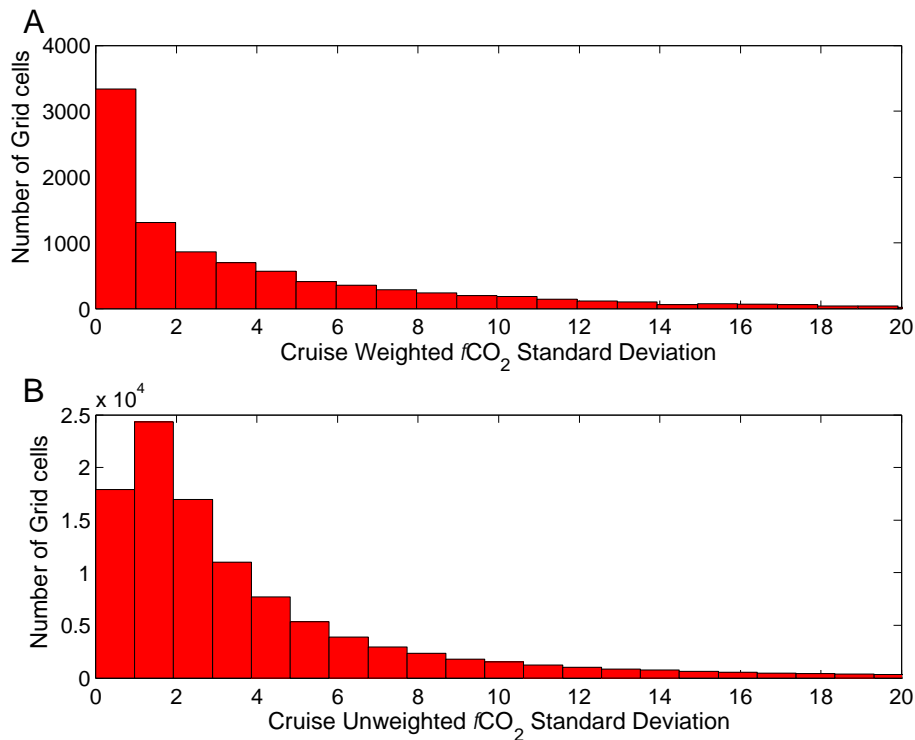


Fig. 2. Histogram of all grid cells (1970–2007) with non-zero standard deviations of the **(A)** cruise weighted $f\text{CO}_2$ values (μatm) and **(B)** unweighted $f\text{CO}_2$ values (μatm).

Title Page

Abstract

Instruments

Data Provenance & Structure

Tables

Figures

◀

▶

◀

▶

Back

Close

Full Screen / Esc

Printer-friendly Version

Interactive Discussion



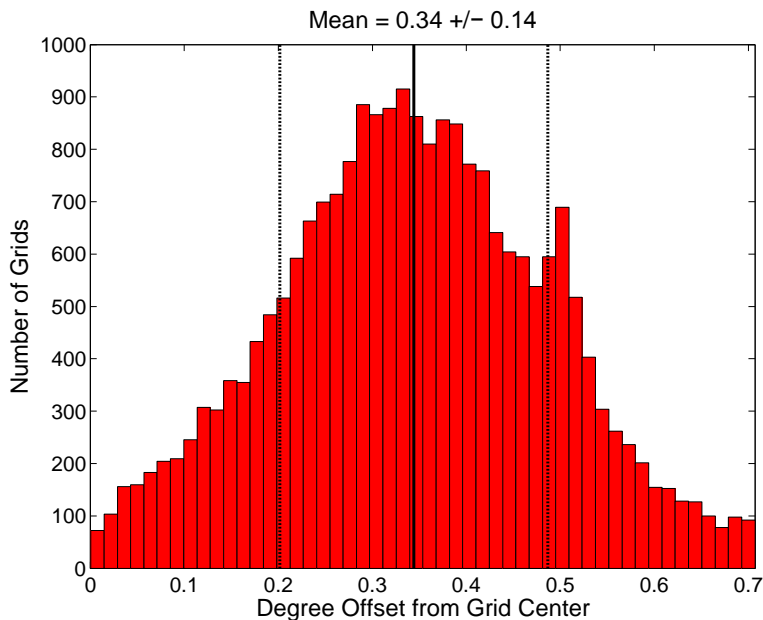


Fig. 3. Histogram of the mean degree offset from grid center for all grid cells with values. The solid line shows the mean offset and the dashed bars show the standard deviation of the mean offset over all time.

Title Page

Abstract

Instruments

Data Provenance & Structure

Tables

Figures

◀

▶

◀

▶

Back

Close

Full Screen / Esc

Printer-friendly Version

Interactive Discussion



Surface Ocean CO₂
Atlas

C. L. Sabine et al.

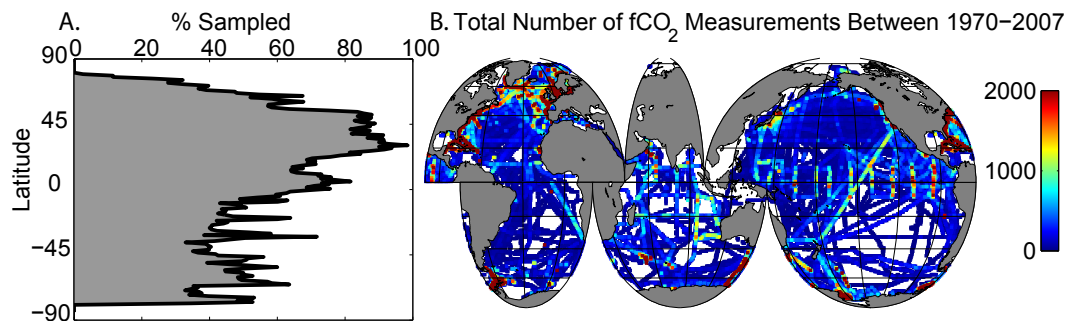


Fig. 4. Map showing total number of observations in each grid cell over the full time period of the data set and the percentage of ocean grid cells that have been sampled for each latitude band.

[Title Page](#)[Abstract](#)[Instruments](#)[Data Provenance & Structure](#)[Tables](#)[Figures](#)[◀](#)[▶](#)[◀](#)[▶](#)[Back](#)[Close](#)[Full Screen / Esc](#)[Printer-friendly Version](#)[Interactive Discussion](#)

[Title Page](#)[Abstract](#)[Instruments](#)[Data Provenance & Structure](#)[Tables](#)[Figures](#)[◀](#)[▶](#)[◀](#)[▶](#)[Back](#)[Close](#)[Full Screen / Esc](#)[Printer-friendly Version](#)[Interactive Discussion](#)

Number of Unique Months of $f\text{CO}_2$ Measurements from 1970–2007

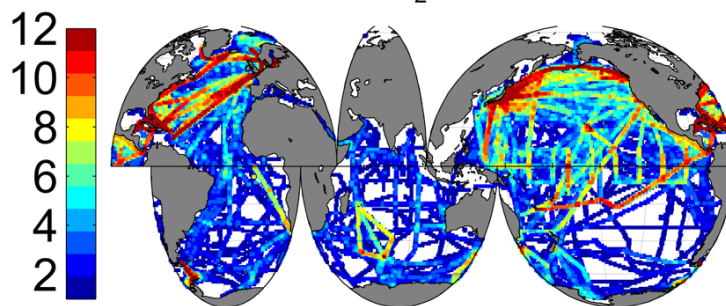


Fig. 5. The number of unique months with $f\text{CO}_2$ observations in each grid cell between 1970 and 2007.

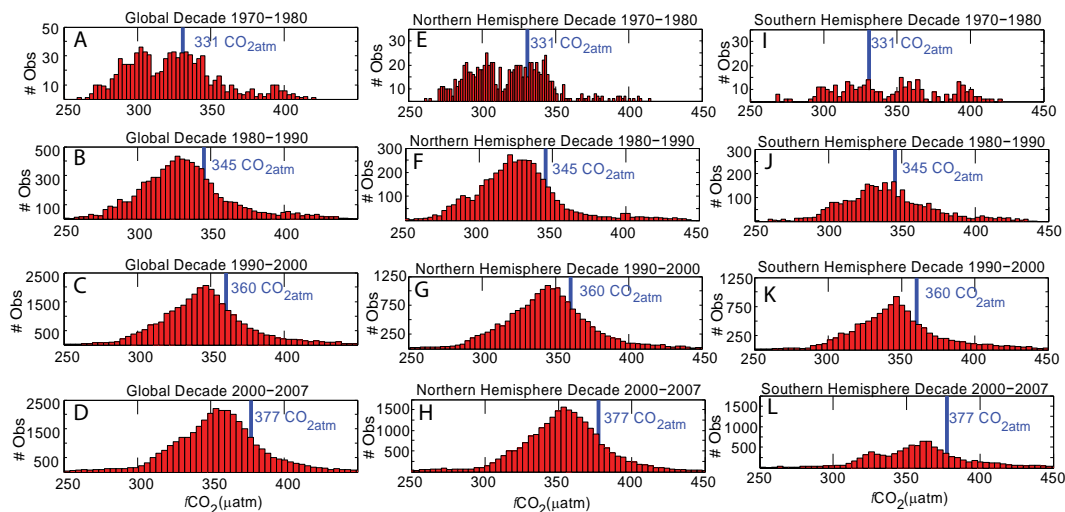


Fig. 6. Histograms of the decadal mean $f\text{CO}_2$ values (μatm) for four different decades. **(A–D)** show the global values, **(E–H)** show the Northern Hemisphere, and **(I–L)** show the Southern Hemisphere values. The mean atmospheric CO_2 at Mauna Loa, HI for each decade is indicated by the blue bar (values from Pieter Tans, NOAA/ESRL (www.esrl.noaa.gov/gmd/ccgg/trends/) and Ralph Keeling, Scripps Institution of Oceanography (www.scrippsco2.ucsd.edu/)).

Discussion Paper | Discussion Paper | Discussion Paper | Discussion Paper

Title Page

Abstract

Instruments

Data Provenance & Structure

Tables

Figures

◀

▶

◀

▶

Back

Close

Full Screen / Esc

Printer-friendly Version

Interactive Discussion

