

Marine and Digital Infrastructure Department – IMN
Information Technology and Marine Data Unit– IDM
Scientific marine information systems - SISMER

Nolwenn DANILOUX

June 2014 - R.INT.IDM/SISMER/14-022

ifremer

2013 French oceanographic cruises report



Contents

1. SISMER	5
1.1. Its role	5
1.2. Stakes	6
<hr/>	
2. Ocean research cruises	7
2.1. Background	7
2.2. French cruise definition	7
2.3. Inventory of cruise informations	7
2.4. Chief scientists' rules and duties	8
2.5. Transmission of summaries	8
<hr/>	
3. Oceanographic cruise data	9
<hr/>	
4. Access to cruises and data	10
<hr/>	
5. Joint Service Unit (JSU) - French oceanographic fleet	11
<hr/>	
6. National assessment organizations	11
<hr/>	
7. French oceanographic cruises in 2013	13
7.1. Contracting organizations	13
7.2. Ocean research fleet in 2013	13
7.2.1. IFREMER fleet	14
7.2.2. IPEV fleet	16
7.2.3. FRENCH NAVY fleet	16
7.2.4. CNRS/INSU fleet	17
7.2.5. IRD fleet	18
7.2.6. Other organizations' fleet	18
7.3. 2013 research cruises	19
7.3.1. Cruises by <i>L'Albert Lucas</i>	20
7.3.2. Cruises by <i>L'Alis</i>	21
7.3.3. Cruises by <i>L'Antea</i>	22
7.3.4. Cruises by <i>L'Astrolabe</i>	23
7.3.5. Cruises by <i>L'Atalante</i>	24
7.3.6. Cruises by <i>Beautemps-Beaupré</i>	25
7.3.7. Cruises by <i>Côtes de la Manche</i>	27
7.3.8. Cruises by <i>L'Europe</i>	28
7.3.9. Cruises by <i>Gwen Drez</i>	29
7.3.10. Cruises by <i>Haliotis</i>	30
7.3.11. Cruises by <i>Marion Dufresne</i>	31
7.3.12. Cruises by <i>Pourquoi pas?</i>	32
7.3.13. Cruises by <i>Sepiola</i>	33
7.3.14. Cruises by <i>Le Suroit</i>	34
7.3.15. Cruises by <i>Téthys II</i>	35
7.3.16. Cruises by <i>Thalassa</i>	36
7.3.17. Cruises by <i>Thalia</i>	37
<hr/>	
8. Statistics	39

8.1. Background	39
8.2. In 2013.....	40
8.2.1. Breakdown of cruises by managing organization	40
8.2.2. Breakdown of cruises by client organization	41
8.2.3. List of cruises in 2013.....	41
8.2.4. List of cruises with no summary.	56

9. Glossary	57
10. Acknowledgements	57
11. Contacts	58

Introduction

This document reports on the French oceanographic cruises conducted in 2013.

It provides a detailed description of SISMER's role in archiving cruise information and oceanographic data. It also gives an overall view of the French ocean research fleet's vessels and how they are used and provides dynamic access to cruise information through the web portal CALLED Nautilus:

http://www.ifremer.fr/sismer/index_UK.htm.

This report has been drawn up by IFREMER, and more specifically by the SISMER department in charge of managing cruise data.

The electronic version of this document is available at the following address: http://www.ifremer.fr/sismer/UK/doc_UK.htm. Clicking on the hypertext links gives direct access to the cruise descriptions.

The various reports for French oceanographic cruises are also available via IFREMER'S institutional archive, Archimer, at: <http://archimer.ifremer.fr/default.jsp?la=en>.

1. SISMER

1.1. Its role

SISMER (acronym for marine scientific information systems) is an IFREMER department located at its center in Brest, France. It is part of the IDM (Information Systems and Oceanographic Databases) unit of the department of Marine and Digital Infrastructure.

It is France's national coordinator for international data exchanges in the framework of the UNESCO Intergovernmental Oceanographic Commission's (IOC) « International Oceanographic Data and Information Exchange (IODE) » program.

To meet the needs of the scientific community, it works with the ISI (Information systems engineering) service in the IDM (IT and marine data) department to develop and use marine-related information systems and databases. The service manages and archives the data collected during French oceanographic cruises and keeps an inventory of them. It also manages real-time data from various operational oceanographic systems (Coriolis database).

SISMER manages the French national oceanographic database, which under very specific rules protects, standardizes and disseminates, data from various fields of marine science, like hydrology, marine biochemistry, currentometry, gravimetry, magnetometry, seismics, bathymetry, acoustic imaging, physical-chemical seabed characteristics and the deep sea environment. The data come from French research laboratories taking part in surveys at sea.

Sismer archives the data, along with information about its source, the experimental conditions and the collection methodology (metadata). It applies quality control

inspections in accordance with international standards and distributes the data and metadata using standardized formats.

It makes an active contribution to French, European and international working groups devoted to standardization and exchange of data. It coordinates the pan-European network of marine data centers called SeaDataNet whose aim is to link the main European oceanographic data centers and thus give users access on line to distributed databases through a single portal.

It is committed to compliance with the rules defined for data distribution and will not disseminate any data which are confidential in nature.

1.2. Stakes

It has been proved that without permanent archiving done following well-established standards, 30% of data acquired are lost by the end of 10 years. The cost of using facilities for data acquisition at sea is so high that it is essential to implement the resources and means necessary for good data preservation.

SISMER is in charge of collecting summaries for all the French ocean research cruises which have taken place aboard French vessels or in cooperation with foreign vessels.

These summaries are made known to the French and worldwide scientific community and are vital for making enhanced use of the data. They are an important component of international oceanographic data exchanges. In return, they make it easier to create global datasets that are accessible to everyone. Contributing to them is both a duty and in the interest of everyone.

No information on surveys or cruises classified as "confidential defence" is held in SISMER's vessel database. However, in order to keep a lasting record for other confidential cruises (commercial contracts, surveys made under contract, etc.), the data are archived but not distributed.

Data which are incorrectly archived or not archived will ultimately be lost for good.

Cruise data which is incorrectly or not referenced (Roscop sheet incorrectly or not completed) are inaccessible and therefore ultimately lost.

The value, in both scientific and financial terms, of data acquired at sea represents a legacy which must be preserved.

2. Ocean research cruises

2.1. Background

In all, SISMER has catalogued 7,430 French oceanographic cruises (broadly speaking, without any confidentiality criteria) since 1913, including:

- ✓ 6,455 cruises (strictly speaking),
- ✓ 580 simple or piggy-backed transit legs,
- ✓ 299 sea-trials cruises,
- ✓ 42 service provisions,
- ✓ 54 other cruises.

Only 7,376 cruises (not including these "other cruises") are covered in this report's statistics.

In the past, cruises were generally conducted by the former Scientific and technical fisheries institute (ISTPM) and by the French Navy's hydrographic and oceanographic service (FRENCH NAVY/SHOM). Later, other organizations like the CNRS, IRD (formerly ORSTOM), IPEV (formerly IFRTP), the National museum of natural history (MNHN), CNEXO (National center for exploitation of the oceans) and then IFREMER (created by merging ISTPM-CNEXO) greatly contributed to the efforts to collect measurements at sea, using their own facilities. Currently, the growing number of European projects and international programs for ship time sharing mean that a number of French cruises are made aboard foreign vessels.

2.2. French cruise definition

"French cruise" means a cruise for which the home organization of the client or contracting authority (and therefore of the chief scientist) is French. Any cruise classified « Confidential Defence » or considered as such is not listed in this document and thus not counted. The document also takes account of single transit legs or survey transit legs as well as sea-trial cruises.

2.3. Inventory of cruise informations

Taking inventory of cruises is done in several steps:

- Listing the scheduled ocean cruise programs. This is done with the help of the people in charge of ship management;

- At the end of each cruise, the chief scientists are requested to send a summary report to SISMER. The summary can be completed directly on line:

<http://forms.ifremer.fr/sismer/csr/>. A template (called a CSR - Cruise Summary Report sheet) is available on the SISMER website found here:

http://www.ifremer.fr/sismer/FR/catal/campagne/Fiche_CSR_FR.htm

For IFREMER vessels, this cruise report corresponds to the CSR sheet called [Cruise Report](#) available on the UMS fleet website. At the end of the cruise, the chief scientist will send it directly to SISMER. This action is performed in compliance with the procedure in effect aboard IFREMER vessels (<http://www.flotteoceanographique.fr/Campagnes-scientifiques>)

and with the guide called Vade-Mecum for users of research vessels of INSU and IFREMER (<http://cir.dt.insu.cnrs.fr/docfiches.html>).

– The information thus gathered is then archived in the SISMER database. Each cruise is given a track number (single identifier).

2.4. Chief scientists' rules and duties

The chief scientists have rights and obligations in terms of archiving and disseminating the data acquired aboard IFREMER vessels.

Two documents can be consulted on line.

The first focuses on the mandate of chief scientists aboard IFREMER research vessels (remit and responsibilities):

http://www.ifremer.fr/umsflotte-data/documentsmodeles/reglementation/chef_mission/role_AG

The other concerns the rights and obligations for archiving and disseminating data acquired aboard IFREMER'S vessels:

<http://www.flotteoceanographique.fr/campagnesscient/Donnees>

2.5. Transmission of summaries

In the framework of the European SeaDataNet - pan-European Infrastructure for marine and ocean data management (<http://www.seadatanet.org/>), the cruise summaries are sent to BSH/DOD (German data center) which ensures that the European CSR (Cruise Summary Reports) are disseminated worldwide, particularly to ICES/CIEM (International Council for the Exploration of the Sea).

3. Oceanographic cruise data

Along with the cruise inventory, data from various fields of ocean research are also archived. They include marine physics, chemistry, biology, geology and geophysics, as well as exploratory fisheries and technology.

In accordance with the rules in effect, SISMER archives and disseminates part of the data collected aboard French research vessels - primarily those of Ifremer vessels - and observation systems.

The data are transmitted by one of the following patterns:

1) Sent directly to SISMER at the end of the mission:

- Raw data acquired using French facilities managed by IFREMER (major facilities),
- Single- and multi-beam bathymetric data,
- Gravimetry data,
- Magnetometry data
- Seismic reflection data,
- Sonar imaging data (sidescan sonars, multibeam echo sounders),
- Navigational data,
- Shipboard ADCP data from RV *L'Atalante*, *Thalassa*, *Le Suroît*, *Beautemps-Beaupré*, *Pourquoi Pas?*.

2) Data requiring laboratory processing:

These data are transmitted once measurements have been validated or samples analyzed:

- Marine biochemical and physical data collected at hydrological stations (CTD and bottle casts),
- Eulerian or Lagrangian time series (currentometry, temperature, deep sea tide gauges),
- Geological samples and analyses.

- Data transmitted in real time:

3) When the ship is so equipped, data can be sent directly in real time for the needs of modeling experts in the framework of operational oceanographic projects:

- CTD and XBT from some cruises,
- Shipboard ADCP from the *Beautemps-Beaupré* and *Pourquoi Pas ?* vessels.

- Data compilations:

SISMER manages and distributes archives of data and data compilation products: theme-based databases, digital terrain models (MNT), maps and atlases which are created in partnership with other scientific centers and laboratories, in the framework of French, European and international programs:

- Physical and biochemical data from European projects: MyOcean, SeaDataNet, Geoseas, Emodnet and the international ARGO, GOSUD and OCEANSITES projects;
- Marine geophysics data: EUROSEISMIC catalogue, EXTRAPLAC database, DORSALES database.

4. Access to cruises and data

The full inventory of *oceanographic surveys* in the French database and *their related data* contains information covering almost a century of measurements taken at sea.

It can be accessed at the following URL:

http://www.ifremer.fr/sismer/index_UK.htm by clicking on:

"Accès aux données" (access to data)

then - "Campagnes à la mer" (sea cruises), to consult the cruises,

or - "Données in situ" (in situ data) to access the data.

The screenshot displays the IFREMER website interface. On the left, there is a 3D visualization of oceanographic data layers, including satellite imagery, bathymetry, and a research vessel. The IFREMER logo is prominently displayed in the center. To the right, a vertical navigation menu contains buttons for "Access data", "French Databases", "Projects", "About SISMER", "Quality assurance", "Links", and "Products". Below the menu, contact details for the Centre IFREMER de Brest are provided, including the address (BP 70, 29280 PLOUZANE, France), telephone (+33 (0)2 98 22 49 16), fax (+33 (0)2 98 22 46 44), and email (sismer@ifremer.fr). An FTP link (ftp.ifremer.fr) is also listed. At the bottom, a banner reads "Welcome to NAUTILUS Portal the french national oceanographic data center" and includes icons for a French flag, email, copyright, news, and contributions.

This portal provides cartographic and interactive consultation and search functions for cruise data. It also enables data to be retrieved or ordered on line using the form on the server, depending on the degree of confidentiality and the file size (500 Mb) permitting.

French research cruises and their data are incorporated in the SeaDataNet project's European catalogues (<http://www.seadatanet.org/>). Information about the cruises can be found at:

http://seadata.bsh.de/csr/retrieve/sdn2_index.html, and there data is on the SeaDataNet WEBSITE at http://seadatanet.maris2.nl/v_cdi_v3/search.asp.

An accessible database on POGO's international server at <http://www.pogo-oceancruises.org/> gives the scheduled cruises of research vessels over 60 m LOA for a dozen countries.

5. Joint Service Unit (JSU) - French oceanographic fleet

The "French oceanographic fleet" Joint Service Unit (JSU) was created on 2 March 2011 for an initial four-year period.

It is supported by the following four research operators: the National center for scientific research (CNRS), the French research institute for exploitation of the sea (IFREMER), the French polar institute "Paul Emile Victor" (IPEV) and the Research institute for cooperative development (IRD).

The JSU's assigned objective is to improve the management of the French ocean research fleet, which was until now shared by these four operators.

The setting up of this Joint Service Unit with unified governance should enable the public authorities to have an overarching view of this Major Research Infrastructure (MRI) in the framework of supervising public policies and clear the way for a comprehensive strategic vision which is currently lacking.

To meet this objective, **three missions** have been defined:

- develop integrated scheduling of vessels and large-scale equipment,
- prepare and coordinate a plan for these fleet's evolution, and
- coordinate investment policies.

On the JSU Fleet website (<http://www.flotteoceanographique.fr/>) are descriptions and activity of all vessels and vehicles of all JSU members, cruise schedules and information about cruise applications and cruises conducted.

6. National assessment organizations

The French oceanographic fleet is managed by the following four organizations: **IFREMER**, **CNRS**, **IPEV** and **IRD**.

In March 2011, these organizations created the Joint Service Unit – French Oceanographic Fleet (JSU-FOF) whose objective is to streamline the management of this fleet.

In terms of scheduling for seagoing facilities, the JSU French Oceanographic Fleet relies, amongst others, on the assessments made by the two commissions following the national call for ocean-going and coastal cruises:

- the **National ocean-going fleet commission (CNFH)**, for cruise projects requiring ocean research vessels from the French offshore oceanographic fleet.
- the **National coastal fleet commission (CNFH)**, for cruise projects requiring ocean research vessels from the French inshore oceanographic fleet.

Their role is also:

- to assess, a posteriori, the results from coastal oceanographic cruises performed using French oceanographic resources;

– to respond to requests from the Scientific and strategic orientations committee (COSS) to take part in drawing up advice concerning the sea-going resources for oceanographic research.

7. French oceanographic cruises in 2013

7.1. Contracting organizations

The main French ocean research vessels are managed by the following organizations:

- **IFREMER** (French research institute for exploitation of the sea),
- **IPEV** (French polar institute – Paul Emile Victor),
- **IRD** (French research institute for cooperative development, formerly ORSTOM),
- **FRENCH NAVY/SHOM** (French Navy's hydrographic and oceanographic service).
- **CNRS/INSU** (French national scientific research center / national institute for sciences of the universe),

The French scientific community also has access to other European vessels through the OFEG (Ocean Facilities Exchange Group) which IFREMER also belongs to. The OFEG coordinates ship time exchanges between the fleets of the United Kingdom, Germany, Spain, the Netherlands, Norway and France.

And lastly, on a more occasional basis, other small vessels (often those of stations or laboratories) can be used for cruises in inshore waters very close to the coast. These vessels are not indicated in the fleet list below.

7.2. Ocean research fleet in 2013

The 2013 cruises were carried out aboard 7 ocean-going research vessels, 8 inshore research vessels, 2 stations' boats and 2 underwater vehicles (NAUTILE and ROV VICTOR 6000).

The WEBSITE OF THE JOINT SERVICE UNIT <http://www.flotteoceanographique.fr/La-flotte/Navires> provides a detailed description of the fleet within this grouping. More specific information is given about the SHOM's vessel on the NETMARINE website <http://www.netmarine.net/bat/hydro/beautempsbeauvre/index.htm>.



The following tables give some of the 2013 fleet's characteristics.

7.2.1. IFREMER fleet


Ships	Specifications
 <p data-bbox="331 712 395 734">Ifremer</p> <p data-bbox="555 712 683 741"><i>Pourquoi pas?</i></p>	<p data-bbox="963 427 1136 584"> Ocean-going vessel NODC code: 35PP Call sign: FMCY Length 108 Crew: 35 Scientists: 40 </p> <p data-bbox="963 611 1278 633">Co-owned by FRENCH NAVY – IFREMER</p>
 <p data-bbox="331 1070 395 1093">Ifremer</p> <p data-bbox="571 1081 667 1111"><i>L'Atalante</i></p>	<p data-bbox="963 770 1136 927"> Ocean-going vessel NODC code: 35A3 Call sign: FNCM Length 85 Crew: 17/30 Scientists: 30 </p>
 <p data-bbox="331 1440 395 1462">Ifremer</p> <p data-bbox="579 1451 659 1480"><i>Thalassa</i></p>	<p data-bbox="963 1140 1136 1296"> Ocean-going vessel NODC code: 35HT Call sign: FNFP Length 74 Crew: 16/25 Scientists: 25 </p> <p data-bbox="963 1323 1262 1346">Co-owned by IEO (SPAIN) – IFREMER</p>
 <p data-bbox="331 1877 395 1899">Ifremer</p> <p data-bbox="579 1888 659 1917"><i>Le Suroît</i></p>	<p data-bbox="963 1509 1136 1666"> Ocean-going vessel NODC code: 35LU Call sign: FZVN Length 56 Crew: 16/23 Scientists: 14 </p>

Ships	Specifications
 <p data-bbox="576 703 660 730"><i>L'Europe</i></p>	<p data-bbox="962 311 1123 465"> Coastal vessel NODC code: 35EU Call sign: FKJB Length 30 Crew: 8 Scientists: 8 </p>
 <p data-bbox="587 1099 649 1126"><i>Thalia</i></p>	<p data-bbox="962 761 1123 916"> Coastal vessel NODC code: 35TC Call sign: FPCS Length 24 Crew: 6 Scientists: 6 </p>
 <p data-bbox="568 1525 668 1552"><i>Gwen Drez</i></p>	<p data-bbox="962 1158 1123 1312"> Coastal vessel NODC code: 35GD Call sign: FZYB Length 25 Crew: 7 Scientists: 5 </p>
 <p data-bbox="584 1939 652 1966"><i>Haliotis</i></p>	<p data-bbox="962 1583 1123 1738"> Coastal vessel NODC code: 35HL Call sign: FGF5958 Length 10 Crew: 2 Scientists: 1 </p>




7.2.2. IPEV fleet

Ships	Specifications
 <p data-bbox="539 757 694 786"><i>Marion Dufresne</i></p>	<p data-bbox="959 376 1134 533"> Ocean-going vessel NODC code: 35MF Call sign: FNIN Length 120.5 Crew: 18/29 Scientists: 60/110 </p> <p data-bbox="959 562 1118 613"> Owned by TAAF Managed by IPEV </p>
 <p data-bbox="563 1326 670 1348"><i>L'Astrolabe</i></p>	<p data-bbox="959 815 1134 972"> Ocean-going vessel NODC code: 35AC Call sign: FHZI Length 65 Crew: 12 Scientists: 48 </p> <p data-bbox="959 1001 1190 1052"> Co-owned by TAAF – IPEV Managed by IPEV </p>



7.2.3. FRENCH NAVY fleet

Vessel	Specifications
 <p data-bbox="523 1895 711 1917"><i>Beautemps-Beaupré</i></p>	<p data-bbox="959 1554 1134 1711"> Ocean-going vessel NODC code: 35B5 Call sign: FABB Length 80 Crew: 26 Scientists: 25 </p> <p data-bbox="959 1740 1278 1762"> Co-owned by FRENCH NAVY – IFREMER </p>

7.2.4. CNRS/INSU fleet

Ships	Specifications
 <p data-bbox="539 779 715 808"><i>Côtés de la Manche</i></p>	<p data-bbox="981 421 1141 577"> Coastal vessel NODC code: 35C4 Call sign: FQBE Length 25 Crew: 7 Scientists: 8 </p>
 <p data-bbox="592 1160 671 1189"><i>Téthys II</i></p>	<p data-bbox="981 840 1141 996"> Coastal vessel NODC code: 35TT Call sign: FGTO Length 24 Crew: 7 Scientists: 8 </p>
 <p data-bbox="571 1608 687 1637"><i>Albert Lucas</i></p>	<p data-bbox="981 1220 1157 1377"> Station boat NODC code: 35LY Call sign: FGG 8669 Length 11.5 Crew: 3 Scientists: 8 </p>

7.2.5. IRD fleet

Vessel	Specifications
 <p data-bbox="592 790 647 813"><i>Antea</i></p>	<p data-bbox="963 427 1123 577"> Coastal vessel NODC code: 35A8 Call sign: FNUR Length 35 Crew: 12 Scientists: 10 </p>
 <p data-bbox="600 1272 639 1294"><i>Alis</i></p>	<p data-bbox="963 853 1123 1003"> Coastal vessel NODC code: 35AY Call sign: FHQB Length 28 Crew: 12 Scientists: 6 </p>

7.2.6. Other organizations' fleet

Vessel	Specifications
 <p data-bbox="584 1921 655 1944"><i>Sepiola</i></p>	<p data-bbox="963 1509 1123 1659"> Station boat NODC code: 35SO Call sign: FI7761 Length 9.3 Crew: 5 Scientists: 7 </p> <p data-bbox="963 1688 1235 1711"> Owned by University Rennes I </p>

7.3. 2013 research cruises

The 2013 cruises are presented below, listed by vessel and indicating spatial location and time period. A full list of cruises for all vessels is also provided at the end of the document.

7.3.1. Cruises by *L'Albert Lucas*

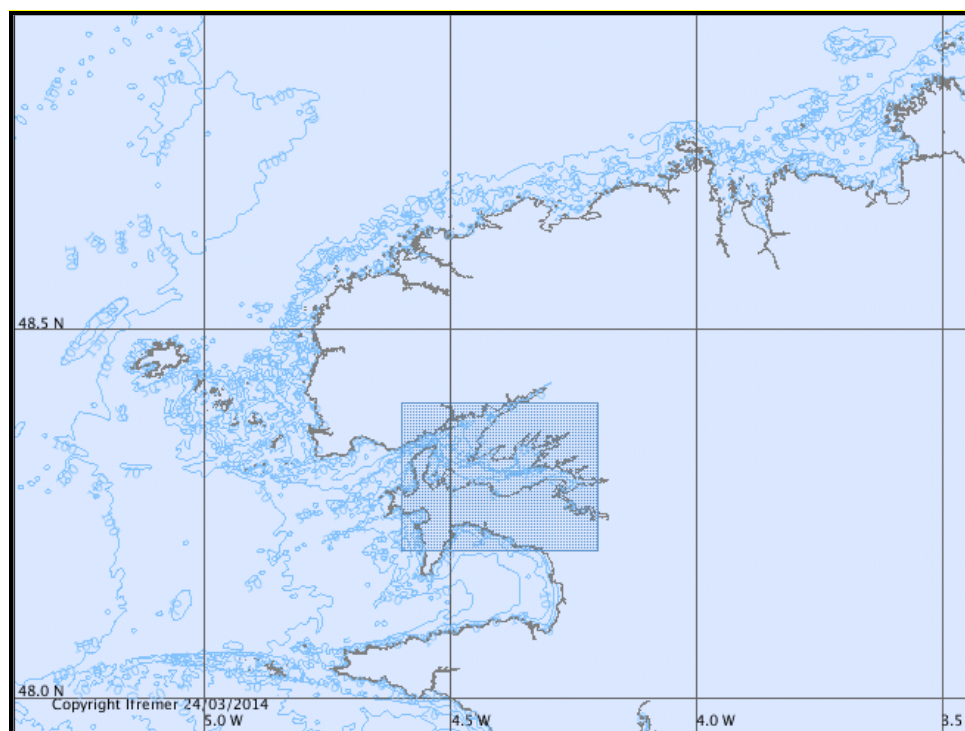


Figure 1 — Track of cruise by *L'Albert Lucas* 2013

REB-RAD-AL-2013

CARLIER Antoine

From 04/03/2013 to 05/03/2013

7.3.2. Cruises by *L'Alis*

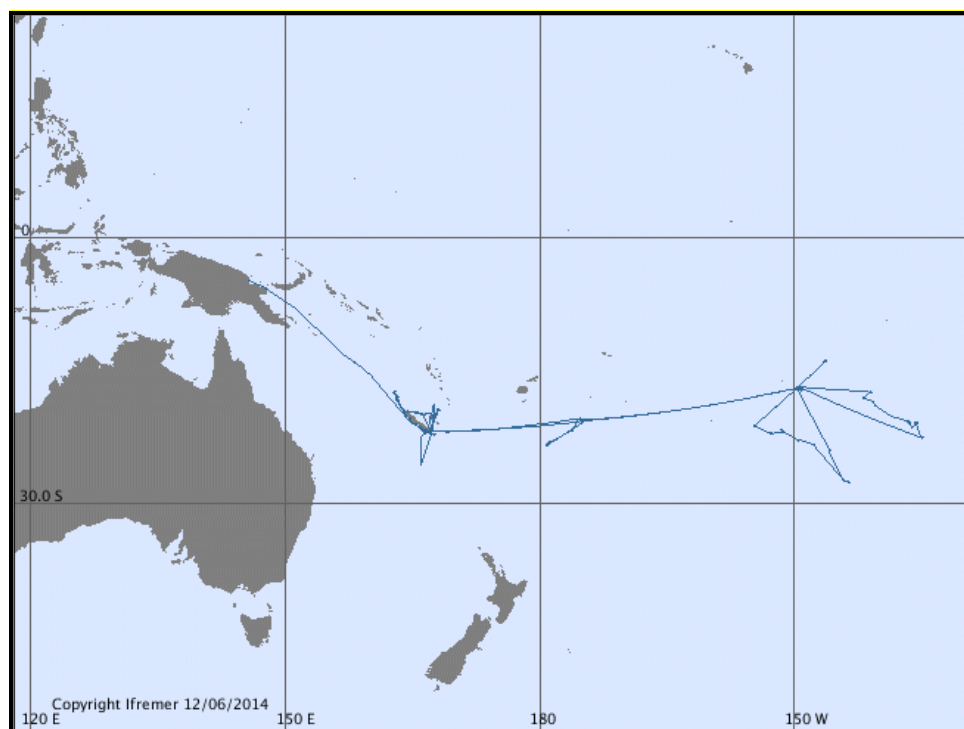


Figure 2 — Tracks of 16 cruises and legs in transit by *L'Alis* in 2013

GEODEVA6_NC2013

BALLU Valérie
From 20/11/2013 to 30/11/2013

COBELO

FAUVELOT Cécile
From 08/11/2013 to 18/11/2013

LOSS

MARIN Frédéric
From 28/10/2013 to 06/11/2013

CALICO

LE ROY Pascal
From 14/10/2013 to 27/10/2013

TR_NUKNMA (Transit)

From 15/07/2013 to 20/07/2013

PRISTINE TONGA

VIGLIOLA Laurent
From 02/07/2013 to 15/07/2013

TR_PPTNUK (Transit)

From 26/06/2013 to 02/07/2013

TR_HAOPPT (Transit)

From 17/06/2013 to 21/06/2013

PRISTINE POLYNESIE

VIGLIOLA Laurent
From 04/06/2013 to 18/06/2013

TR_PPTMGA (Transit)

From 28/05/2013 to 03/06/2013

POLYPERL

ANDREFOUET Serge
From 24/04/2013 to 28/05/2013

TAHITI ITI

DEBITUS Cécile
From 12/04/2013 to 23/04/2013

TUHAA PAE 2013

DEBITUS Cécile
From 06/03/2013 to 10/04/2013

TR_NMAPPT (Transit)

From 16/02/2013 to 03/03/2013

SPOT2013

AUCAN Jérôme
From 10/02/2013 to 07/12/2013

VAHINE 1

BONNET Sophie
From 09/01/2013 to 08/02/2013

7.3.3. Cruises by *L'Antea*

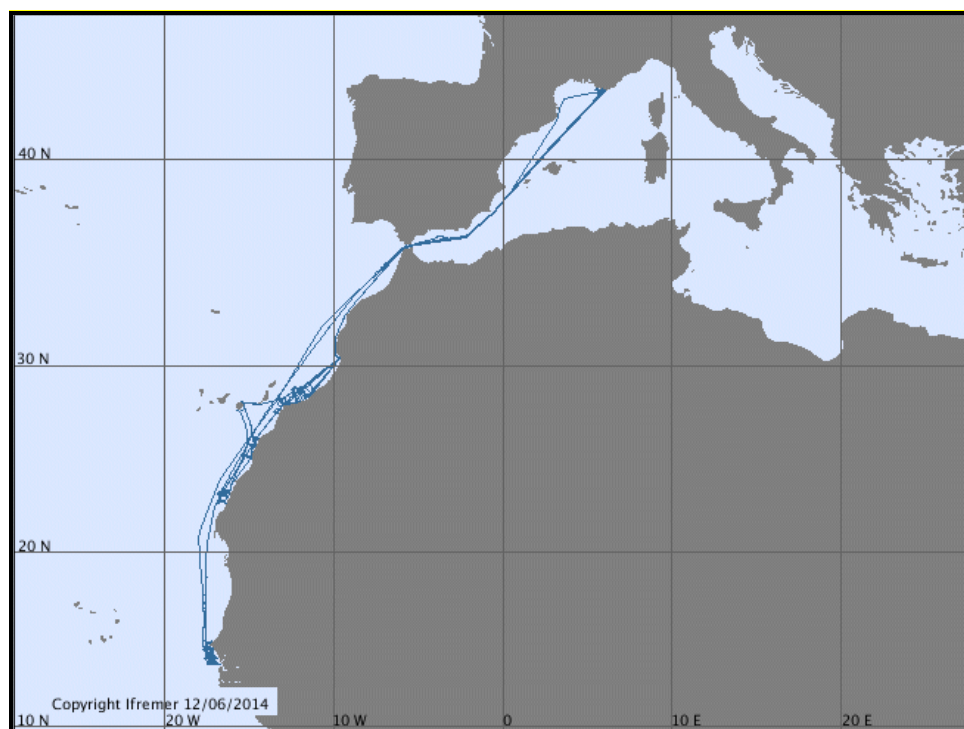


Figure 3 — Tracks of 10 cruises and legs in transit by *L'Antea* in 2013

EPURE 2

DESCHAMPS Anne

From 07/11/2013 to 11/12/2013

ESSDIV_13AN3

PIETE Helen

From 31/10/2013 to 31/10/2013

TR_AGASEY (Transit)

From 02/08/2013 to 09/08/2013

EPURE 1

DESCHAMPS Anne

From 27/06/2013 to 02/08/2013

ESSDIV_13AN2

GOULOUZELLE Loic

From 19/06/2013 to 20/06/2013

TR_DAKTLN (Transit)

From 22/03/2013 to 01/04/2013

ECOAO

BREHMER Patrice

From 05/03/2013 to 20/03/2013

UPSEN 2013

CAPET Xavier

From 21/02/2013 to 03/03/2013

TR_TLNDAK (Transit)

From 08/02/2013 to 20/02/2013

ESSDIV_13AN1

TREDUNIT Gilles

From 05/02/2013 to 07/02/2013

7.3.4. Cruises by *L'Astrolabe*

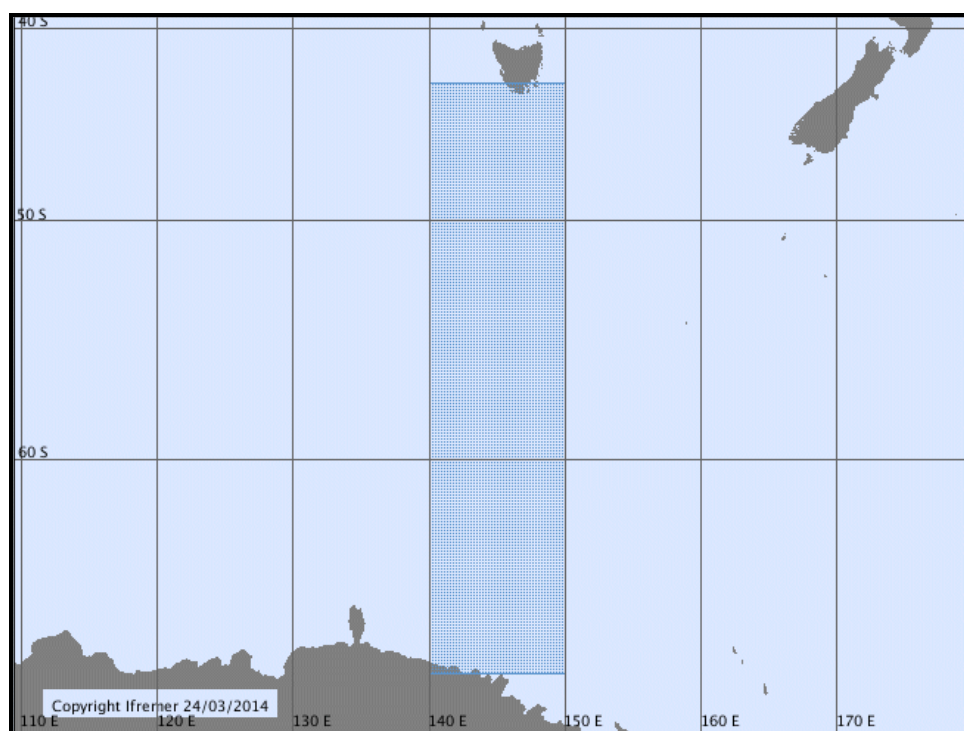


Figure 4 — Track of the cruise by *L'Astrolabe* in 2013

SURVOSTRAL 2013/2014
MORROW-GREINER Rosemary
From 03/12/2013 to 14/03/2014

7.3.5. Cruises by L'Atalante

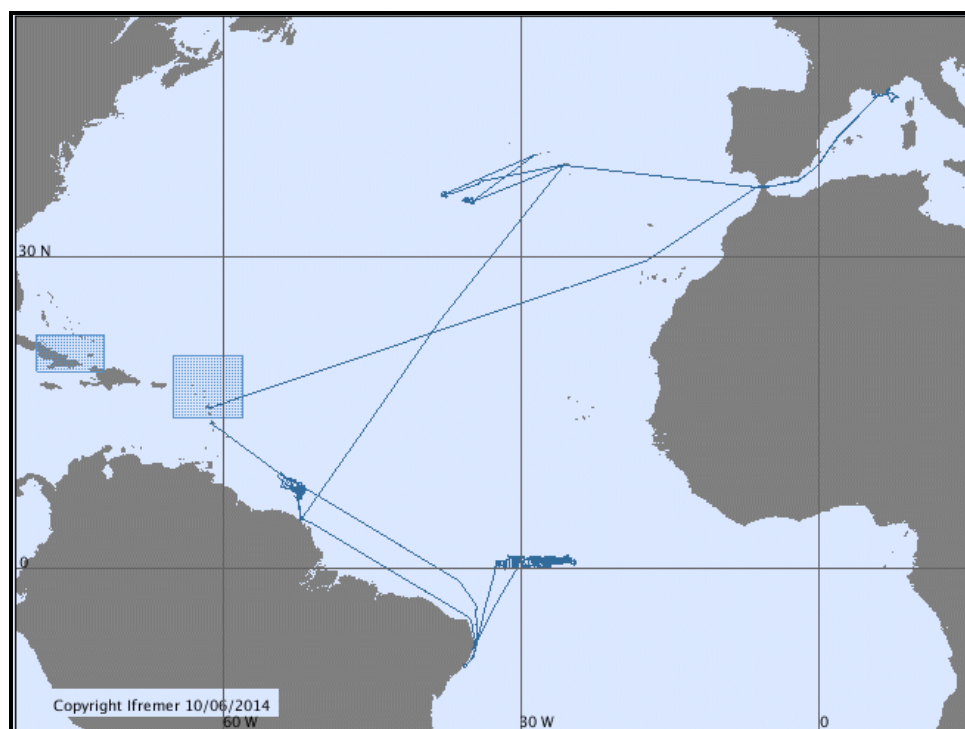


Figure 5 — Tracks of 14 cruises and legs in transit by *L'Atalante* in 2013

ANTITHESIS LEG1

MARCAILLOU Boris

From 24/11/2013 to 24/12/2013

HAITI-SIS2

LEROY Sylvie

From 06/11/2013 to 20/11/2013

TR_SEYPAP (Transit)

From 17/10/2013 to 01/11/2013

ESSNAUT 13

TRIGER Pierre

From 02/10/2013 to 14/10/2013

ESS_PAM

LE GALL Yves

Du 26/09/13 au 27/09/13

TR_SEYMAR (Transit)

From 22/09/2013 to 23/09/2013

PRISME 2

CATTANEO Antonio

From 14/07/2013 to 04/08/2013

TR_PDATLN (Transit)

From 04/07/2013 to 12/07/2013

OCEANOGRAFLU

LUCAZEAU Francis

From 05/06/2013 to 02/07/2013

TR_CAYPDA (Transit)

From 24/05/2013 to 03/06/2013

IGUANES

LONCKE Lie

From 29/04/2013 to 21/05/2013

TR_RCFCAY (Transit)

From 17/04/2013 to 24/04/2013

COLMEIA

MAIA Marcia

From 23/01/2013 to 28/02/2013

TR_FDFRCF (Transit)

From 08/01/2013 to 21/01/2013

7.3.6. Cruises by *Beautemps-Beaupré*

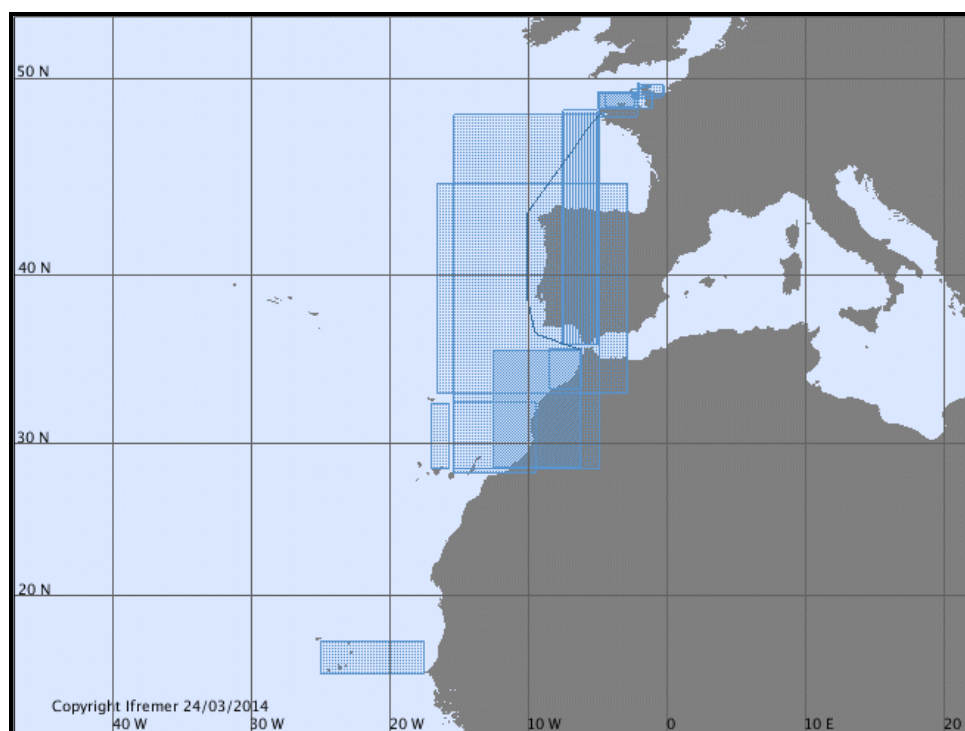


Figure 6 — Tracks of 25 cruises and transits by *Beautemps-Beaupré* in 2013

TV_FUNCHAL_BORDEAUX (Transit)

IETA MATHIAS

From 05/11/2013 to 09/11/2013

TV_MINDELO_FUNCHAL (Transit)

IETA MATHIAS

From 31/10/2013 to 02/11/2013

TV_BREST_LASPALMAS2 (Transit)

IETA MATHIAS

From 28/09/2013 to 30/09/2013

COMET_BREST_LASPALMAS

IETA MATHIAS

From 27/09/2013 to 28/09/2013

TV_BREST_LASPALMAS1 (Transit)

IETA MATHIAS

From 23/09/2013 to 27/09/2013

PROTEVS_DUNES

IETA MATHIAS

From 27/08/2013 to 11/09/2013

TV_STMALO_BREST (Transit)

IETA MATHIAS

From 21/08/2013 to 22/08/2013

LADEROUTE_STMALO_BREST3

IETA MATHIAS

From 13/08/2013 to 21/08/2013

LADEROUTE_BREST_STMALO

IETA MATHIAS

From 03/08/2013 to 09/08/2013

TV_BREST_STMALO (Transit)

IETA MATHIAS

From 02/08/2013 to 03/08/2013

LADEROUTE_STMALO_BREST2

IETA MATHIAS

From 18/07/2013 to 26/07/2013

RAZ_BLANCHARD_CAEN_STMALO_21

IETA LE MOIGNE Pierre-Yves

From 17/07/2013 to 18/07/2013

LADEROUTE_STMALO_BREST1

IETA MATHIAS

From 16/07/2013 to 17/07/2013

RAZ_BLANCHARD_CAEN_STMALO_19

IETA LE MOIGNE Pierre-Yves

From 11/07/2013 to 11/07/2013

BARFLEUR_BREST_CAEN_18

IETA LE MOIGNE Pierre-Yves

From 08/07/2013 to 09/07/2013

RAZ_BLANCHARD_BREST_CAEN_17

IETA LE MOIGNE Pierre-Yves

From 08/07/2013 to 08/07/2013

BARFLEUR_BREST_CAEN_16

IETA LE MOIGNE Pierre-Yves

From 07/07/2013 to 07/07/2013

RAZ_BLANCHARD_BREST_CAEN_15

IETA LE MOIGNE Pierre-Yves

From 05/07/2013 to 07/07/2013

BARFLEUR_BREST_CAEN_14

IETA LE MOIGNE Pierre-Yves
From 02/07/2013 to 05/07/2013

RAZ_BLANCHARD_BREST_CAEN_13

IETA LE MOIGNE Pierre-Yves
From 01/07/2013 to 02/07/2013

TV_LASPALMAS_BREST (Transit)

IETA LE MOIGNE Pierre-Yves
From 20/06/2013 to 26/06/2013

TV_DAKAR_LASPALMAS (Transit)

IETA LE MOIGNE Pierre-Yves
From 07/04/2013 to 13/04/2013

TV_MINDELO_DAKAR (Transit)

IPETA LEVIEUGE Daniel
From 30/03/2013 to 01/04/2013

COMET_BREST_TENERIFE

IPETA LEVIEUGE Daniel
From 26/02/2013 to 01/03/2013

TV_BREST_TENERIFE (Transit)

IPETA LEVIEUGE Daniel
From 23/02/2013 to 26/02/2013

7.3.7. Cruises by *Côtes de la Manche*

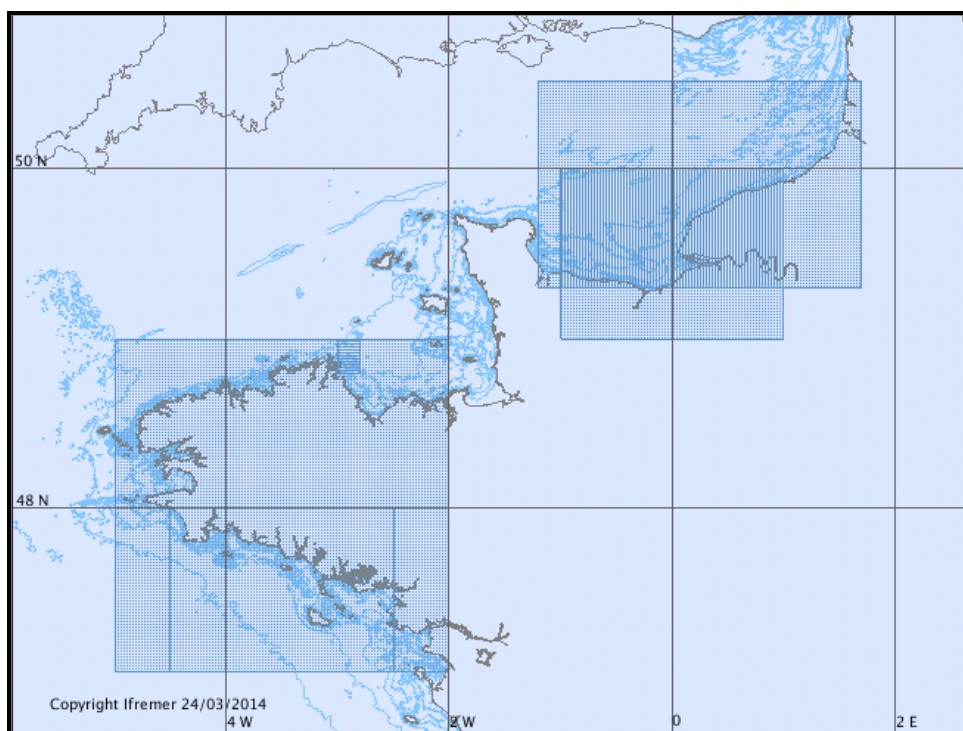


Figure 7 — Tracks of 5 cruises by *Côtes de la Manche* in 2013

MASTODON

LAZURE Pascal

From 01/11/2013 to 06/11/2013

MERCAUX

PAQUET Fabien

From 30/08/2013 to 10/09/2013

PHYTEC

LUNVEN Michel

From 21/06/2013 to 29/06/2013

SHARKS

LE GENDRE Romain

From 26/04/2013 to 27/05/2013

BREBENT-02

CARLIER Antoine

From 19/03/2013 to 23/05/2013

7.3.8. Cruises by *L'Europe*

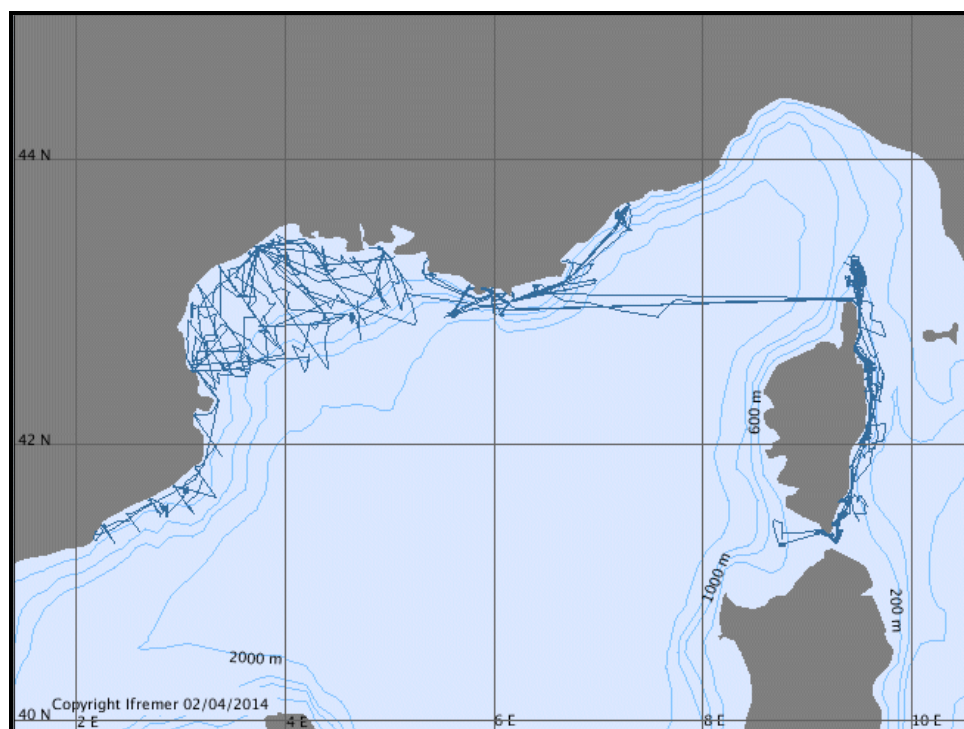


Figure 8 — Tracks of 13 cruises and legs in transit by *L'Europe* in 2013

SOLVEIG IV-2

SILVA JACINTO Ricardo
From 04/12/2013 to 09/12/2013

VAD

HAMON Michel
From 27/11/2013 to 03/12/2013

PERSMED I

TRONCZYNSKI Jacek
From 20/11/2013 to 26/11/2013

ESSBOB

SCALABRIN Carla
From 17/09/2013 to 23/09/2013

SOLVEIG IV-1

SILVA JACINTO Ricardo
From 11/09/2013 to 16/09/2013

CORALCORSE

CLABAUT Philippe
From 02/08/2013 to 10/09/2013

PELMED 2013

BIGOT Jean-Louis
From 27/06/2013 to 01/08/2013

MEDITS 2013

JADAUD Angélique
From 23/05/2013 to 26/06/2013

DIVACOU 6

EDMOND Toussaint
From 13/05/2013 to 22/05/2013

STEP 2013

APPRIOUAL Ronan
From 04/03/2013 to 11/03/2013

PEPSEA-2

MUNARON Dominique
From 25/02/2013 to 28/02/2013

TR_SEYMAR (Transit)

From 25/02/2013 to 25/02/2013

ESSTECH_13EU1

VIOLLETTE Pascal
From 23/02/2013 to 23/02/2013

7.3.9. Cruises by *Gwen Drez*

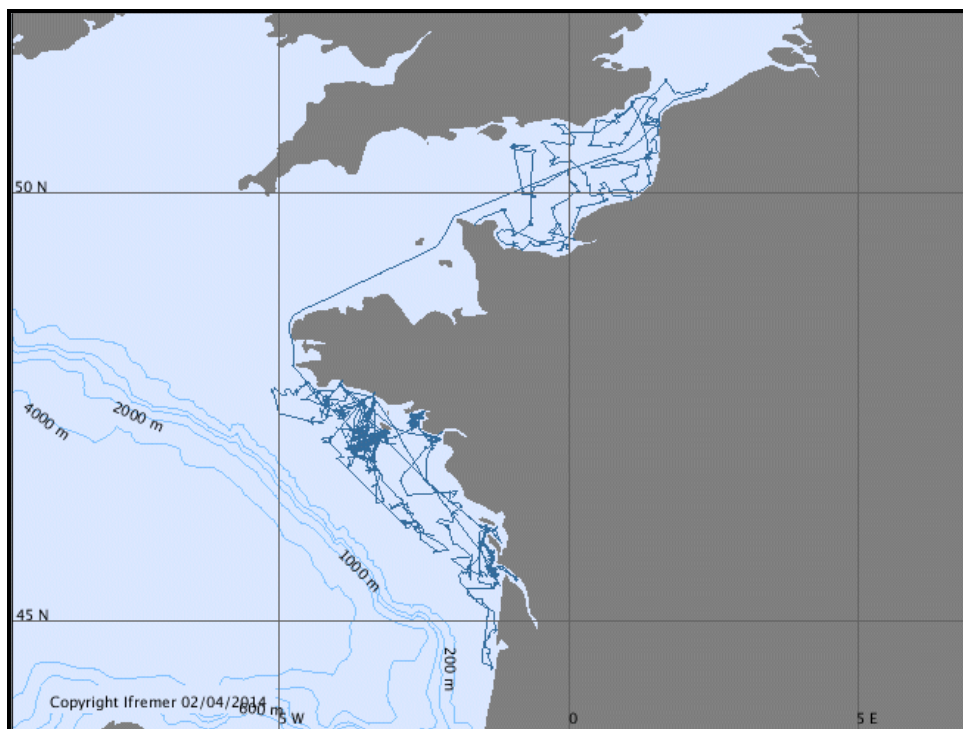


Figure 9 — Tracks of 13 cruises and leg in transit by *Gwen Drez* in 2013

ORHAGO 13

COUPEAU Yann

From 09/11/2013 to 03/12/2013

CGFS2013

LE ROY Didier

From 06/10/2013 to 04/11/2013

ESS_PANACHE

LE ROY Didier

From 02/10/2013 to 05/10/2013

TR_CONBOU (Transit)

From 29/09/2013 to 01/10/2013

TR_SNZCON (Transit)

From 18/09/2013 to 19/09/2013

NURSE 2013

BRIND'AMOUR Anik

From 01/09/2013 to 17/09/2013

TR_CONCDB (Transit)

From 31/08/2013 to 01/09/2013

FEBBE-2

LAFFARGUE Pascal

From 20/08/2013 to 29/08/2013

TR_CONLOR (Transit)

From 18/08/2013 to 19/08/2013

FEBBE-1

LAFFARGUE Pascal

From 22/05/2013 to 01/06/2013

LANGOLF 2013

GARREN François

From 03/05/2013 to 21/05/2013

JUMPER

VINCENT Benoît

From 26/04/2013 to 02/05/2013

ESSTECH_13GW1

VIOLLETTE Pascal

From 24/04/2013 to 24/04/2013

7.3.10. Cruises by *Haliotis*

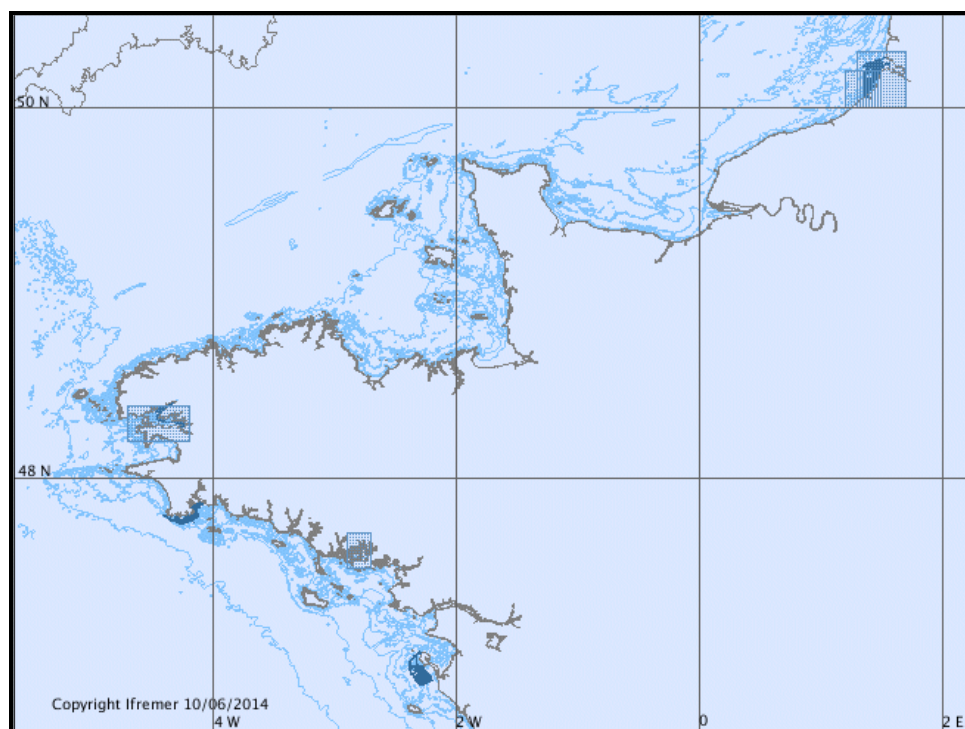


Figure 10 — Tracks of 10 cruises by *l'Haliotis* in 2013

CROCOLIT LEG3

DUPERRET Anne

From 11/10/2013 to 14/10/2013

ESTUSOM 2013 - LEG 2

MICHEL Charlotte

From 14/09/2013 to 09/10/2013

ZOSTERA-ACOUSTIQUE

CORDIER Céline

From 27/08/2013 to 11/09/2013

REB-RAD-H-2013

CARLIER Antoine

From 09/07/2013 to 12/07/2013

BOURGNEUF 2013

MAANAN Mohamed

From 06/06/2013 to 06/07/2013

FISSEL 2013

HENAFF Alain

From 23/05/2013 to 03/06/2013

CROCOLIT LEG2

DUPERRET Anne

From 27/04/2013 to 20/05/2013

CROCOLIT LEG1

DUPERRET Anne

From 29/03/2013 to 01/04/2013

ESTUSOM 2013 - LEG 1

MICHEL Charlotte

From 02/03/2013 to 27/03/2013

ESSTECH_13HA1

BISQUAY Hervé

From 19/02/2013 to 20/02/2013

7.3.11. Cruises by *Marion Dufresne*

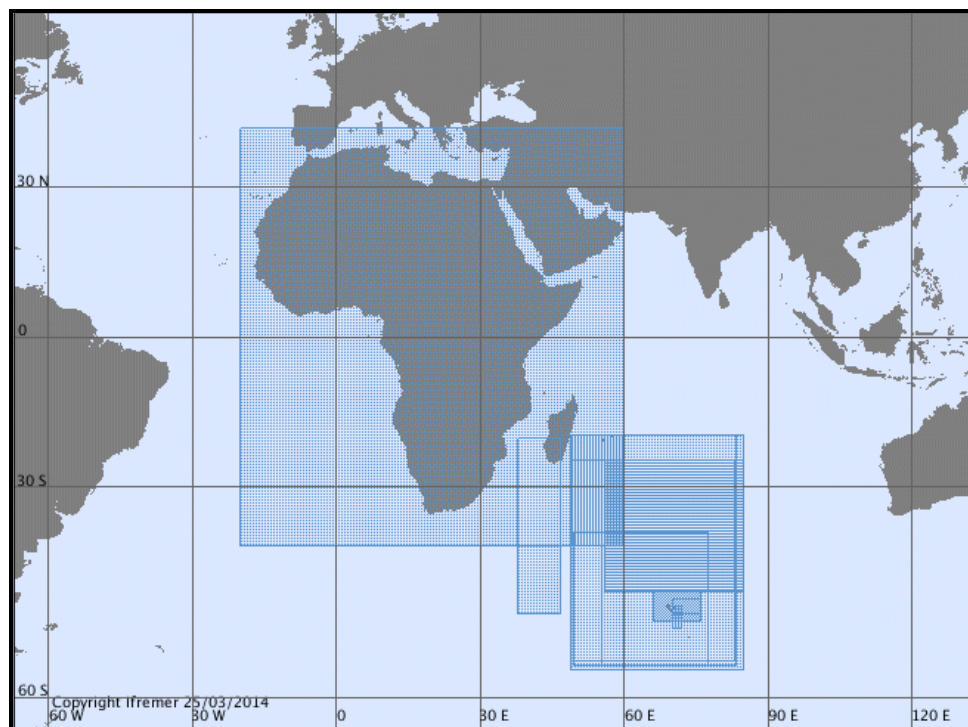


Figure 11 — Tracks of 11 cruises and piggybacking legs in transit by *Marion Dufresne* in 2013

VT 134 / MYCTO

JOSSE Erwan
From 23/08/2013 to 25/09/2013

VT 133 / MERIADZEC

WOERTHER Patrice
From 02/06/2013 to 08/06/2013

VT 132 / TRIMADU

BAILLY DU BOIS Pascal
From 18/04/2013 to 14/05/2013

VT 129 / MAKER 2013/1061

PARK Young-Hyang
From 20/02/2013 to 20/02/2013

VT 128 / OHA-SIS-BIO-5

ROYER Jean-Yves
From 06/02/2013 to 13/03/2013

VT 123 / NIVMER13

SCOUARNEC Lionel
From 06/02/2013 to 13/03/2013

VT 127 / OISO-22

LO MONACO Claire
From 06/02/2013 to 13/03/2013

VT 126 / MDCPR

KOUBBI Philippe
From 06/02/2013 to 13/03/2013

VT 124 / MYCTO

JOSSE Erwan
From 06/02/2013 to 13/03/2013

MD 193 / LOGIPEV

SANGIARDI Pierre
From 06/02/2013 to 13/03/2013

VT 125 / KEOPS2_MOOR

GUENEUGUES Audrey
From 06/02/2013 to 13/03/2013

7.3.12. Cruises by *Pourquoi pas?*

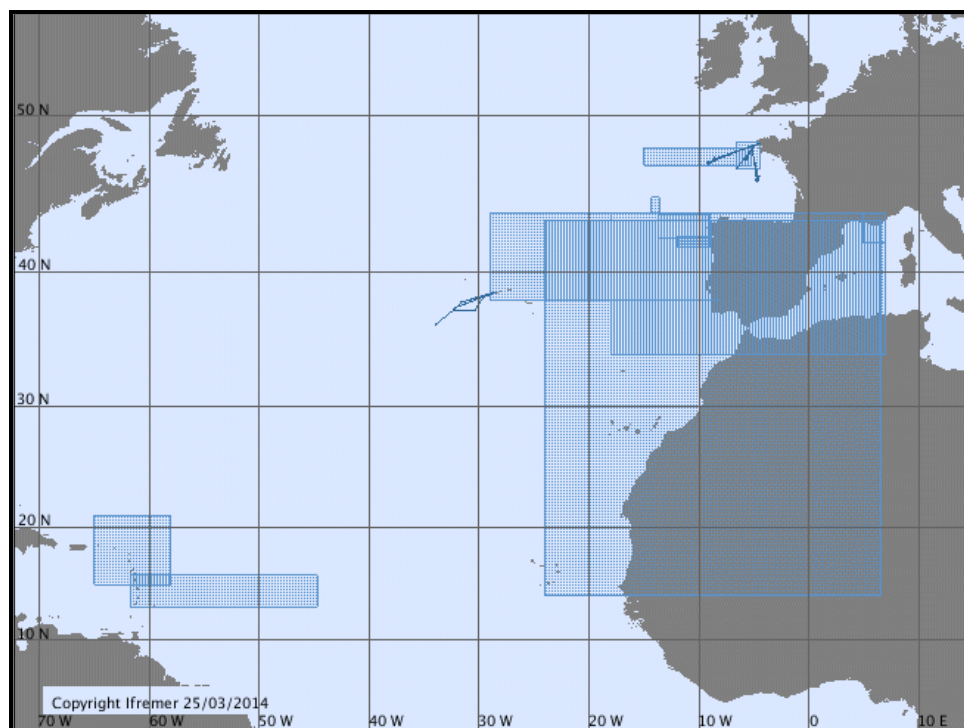


Figure 12 — Tracks of 16 cruises and legs in transit by *Pourquoi pas?* in 2013

ANTITHESIS LEG2

MARCAILLOU Boris
From 25/12/2013 to 08/01/2014

ODEMAR

ESCARTIN Javier
From 15/11/2013 to 20/12/2013

TV_INFO

RUE Armel
From 05/11/2013 to 14/11/2013

ESSROV

CHRISTOPHE Alain
From 29/10/2013 to 05/11/2013

PRISME 3

CATTANEO Antonio
From 07/10/2013 to 25/10/2013

TVEOP5

SIMEONI Patrick
From 20/09/2013 to 04/10/2013

TR_LHACOR (Transit)

From 07/09/2013 to 12/09/2013

MOMARSAT2013

BLANDIN Jérôme
From 23/08/2013 to 07/09/2013

BIOBAZ 2013

LALLIER François
From 02/08/2013 to 21/08/2013

TV_VIGO_PONTA (Transit)

ICETA ROSADA Jean-Christophe
From 06/06/2013 to 07/06/2013

TV_LISBONNE_VIGO_2 (Transit)

ICETA ROSADA Jean-Christophe
From 20/05/2013 to 20/05/2013

TV_LISBONNE_VIGO_1 (Transit)

ICETA ROSADA Jean-Christophe
From 19/05/2013 to 03/06/2013

TV_BREST_LISBONNE (Transit)

ICETA ROSADA Jean-Christophe
From 28/04/2013 to 03/05/2013

ESSGRAVI2

BEUCHARD Sébastien
From 27/03/2013 to 29/03/2013

ESS_SYPEN

LEON Pierre
From 13/03/2013 to 26/03/2013

ESS_GRAVIBUC

BEUCHARD Sébastien
From 09/03/2013 to 11/03/2013

7.3.13. Cruises by *Sepiola*

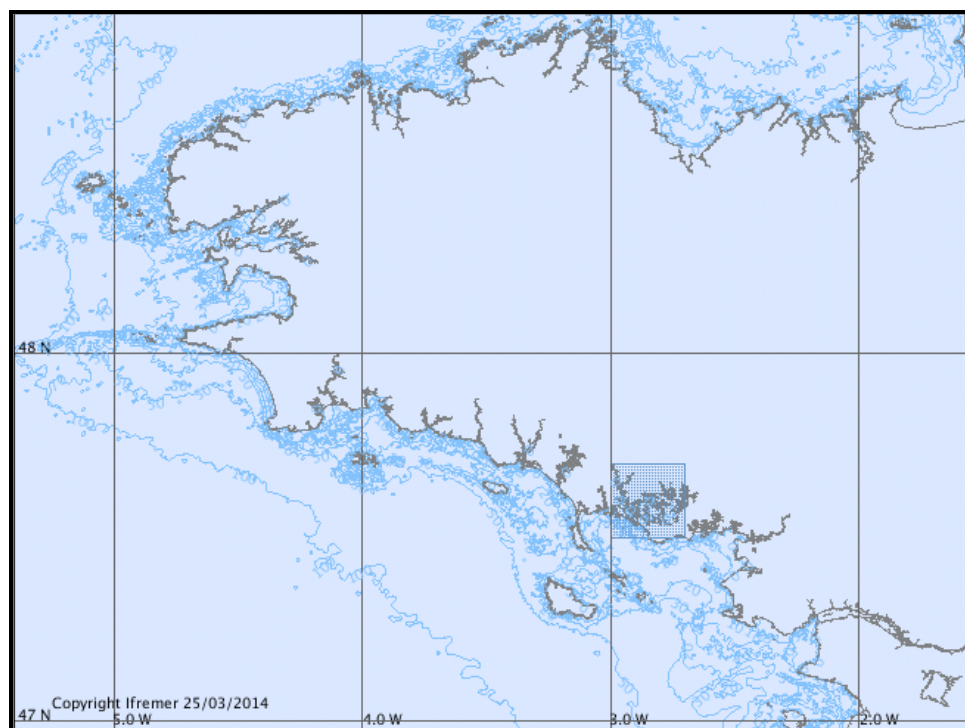


Figure 13 — Track of the cruise by *Sepiola* in 2013

ZOSTERA-VIDEO

CORDIER Céline

From 12/09/2013 to 13/09/2013

7.3.14. Cruises by *Le Suroit*

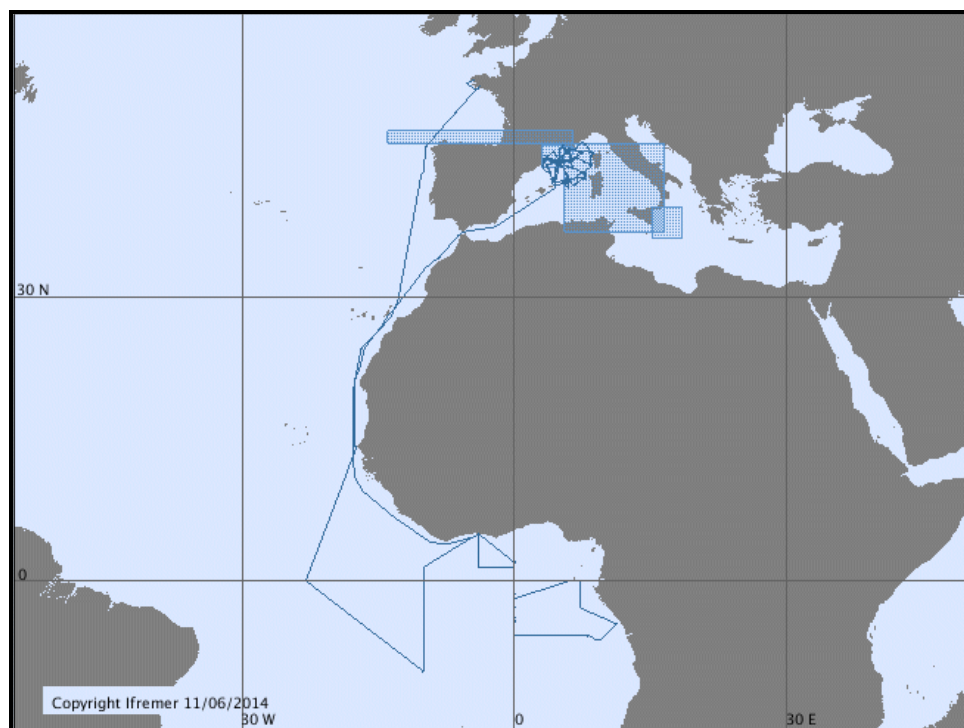


Figure 14 — Tracks of 16 cruises and legs in transit by *Suroit* in 2013

ESSAUV 13

OPDERBECKE Jan
From 31/10/2013 to 01/11/2013

TR_CATSEY (Transit)
From 26/10/2013 to 28/10/2013

CIRCEE
GUTSCHER Marc-André
From 03/10/2013 to 24/10/2013

TR_SEYCAT (Transit)
From 28/09/2013 to 01/10/2013

AM-MED-1 LEG2
RABINEAU Marina
From 14/09/2013 to 25/09/2013

AM-MED-1 LEG1
RABINEAU Marina
From 28/08/2013 to 13/09/2013

TR_CORSEY (Transit)
From 10/08/2013 to 15/08/2013

ESS_BASES_13
FLOCH Henri
From 23/07/2013 to 26/07/2013

TR_ABICON (Transit)

From 22/06/2013 to 05/07/2013

PIRATA-FR23 LEG2

BOURLES Bernard
From 01/06/2013 to 18/06/2013

PIRATA-FR23 LEG1

GRELET Jacques
From 11/05/2013 to 29/05/2013

TR_TLNDAK (Transit)

From 27/04/2013 to 08/05/2013

DEWEX-MERMEX 2013 LEG2

CONAN Pascal
From 03/04/2013 to 26/04/2013

ESS_SMF_13SU1

LOSSOUARN Hubert
From 01/03/2013 to 04/03/2013

TR_TLNMAR (Transit)

From 25/02/2013 to 25/02/2013

DEWEX-MERMEX 2013 LEG1

TESTOR Pierre
From 01/02/2013 to 22/02/2013

7.3.15. Cruises by *Téthys II*

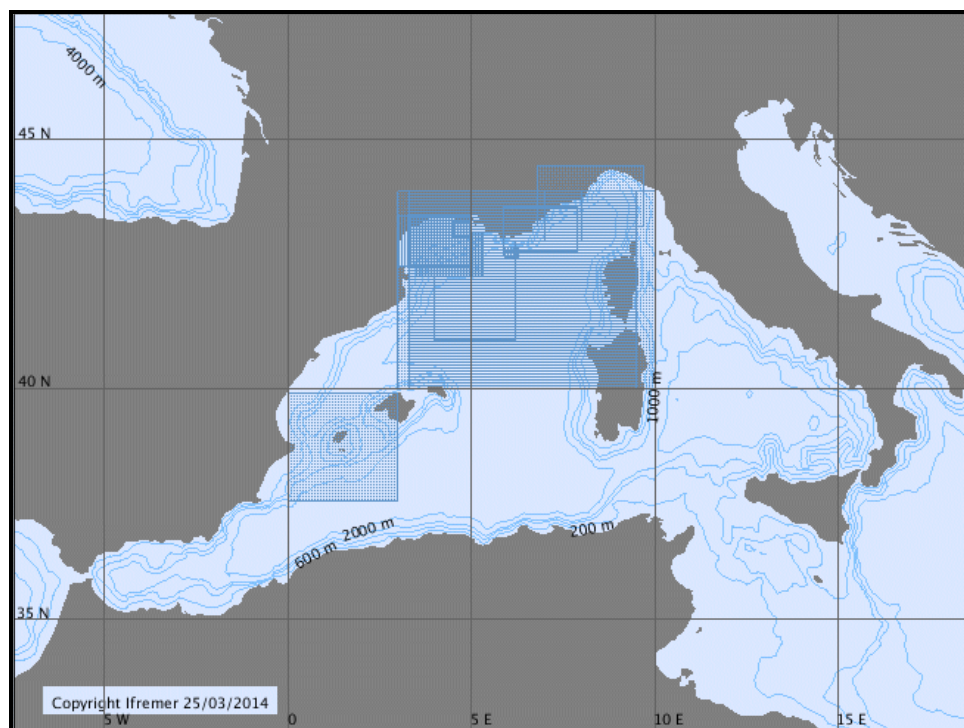


Figure 15 —Tracks of 13 cruises by *Téthys II* in 2013

BILLION 35

KUNESCH Stéphane

From 02/11/2013 to 09/11/2013

DOWEX2013

MORTIER Laurent

From 22/09/2013 to 06/10/2013

FABLES 4

MIGEON Sébastien

From 01/09/2013 to 04/09/2013

MEUST

GOJAK Carl

From 01/08/2013 to 04/08/2013

VISUFRONT

IRISSON Jean-Olivier

From 18/07/2013 to 30/07/2013

MOOSE_GE

TESTOR Pierre

From 12/06/2013 to 09/07/2013

RADLIT

RADAKOVITCH Olivier

From 28/03/2013 to 03/04/2013

CARBODELTA

RABUILLE Christophe

From 26/02/2013 to 30/04/2013

HYMEX_SOP2

TAUPIER-LETAGE Isabelle

From 27/01/2013 to 11/05/2013

MOOSE (ANTARES)

LEFEVRE Dominique

From 25/01/2013 to 10/12/2013

BOUSSOLE 2013

GOLBOL Melek

From 21/01/2013 to 14/12/2013

MOOSE (DYFAMED)

DIAMOND Emilie

From 19/01/2013 to 10/12/2013

SIMBAD

MAILLARD Agnès

From 03/01/2013 to 18/01/2013

7.3.16. Cruises by *Thalassa*

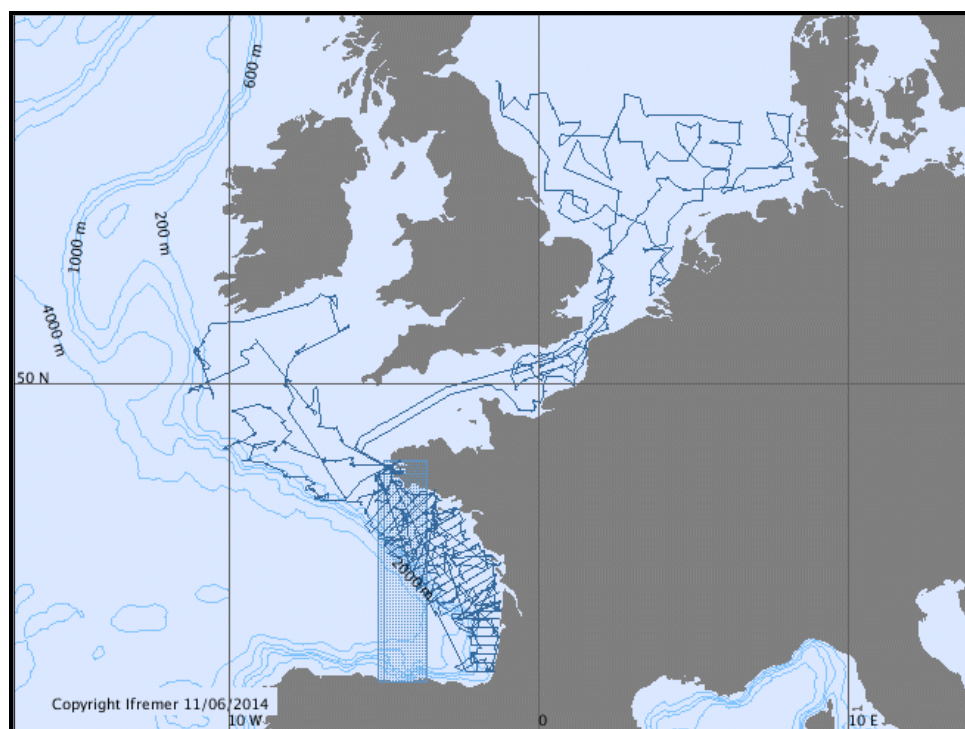


Figure 16 — Tracks of 7 cruises and legs in transit by *Thalassa* in 2013

EVHOE 2013

SALAUN Michèle

From 17/10/2013 to 01/12/2013

PROTEVS_2013_LEG2

IPA THEUILLON Gwladys

From 01/10/2013 to 14/10/2013

PROTEVS_2013_LEG1

IPA THEUILLON Gwladys

From 17/09/2013 to 28/09/2013

ESS_PROP_13

PAYET Jean-Claude

From 05/09/2013 to 07/09/2013

PELGAS 2013

DORAY Mathieu

From 22/04/2013 to 04/06/2013

TR_BOUBRE (Transit)

From 16/02/2013 to 18/02/2013

IBTS 2013

VERIN Yves

From 15/01/2013 to 14/02/2013

7.3.17. Cruises by *Thalia*

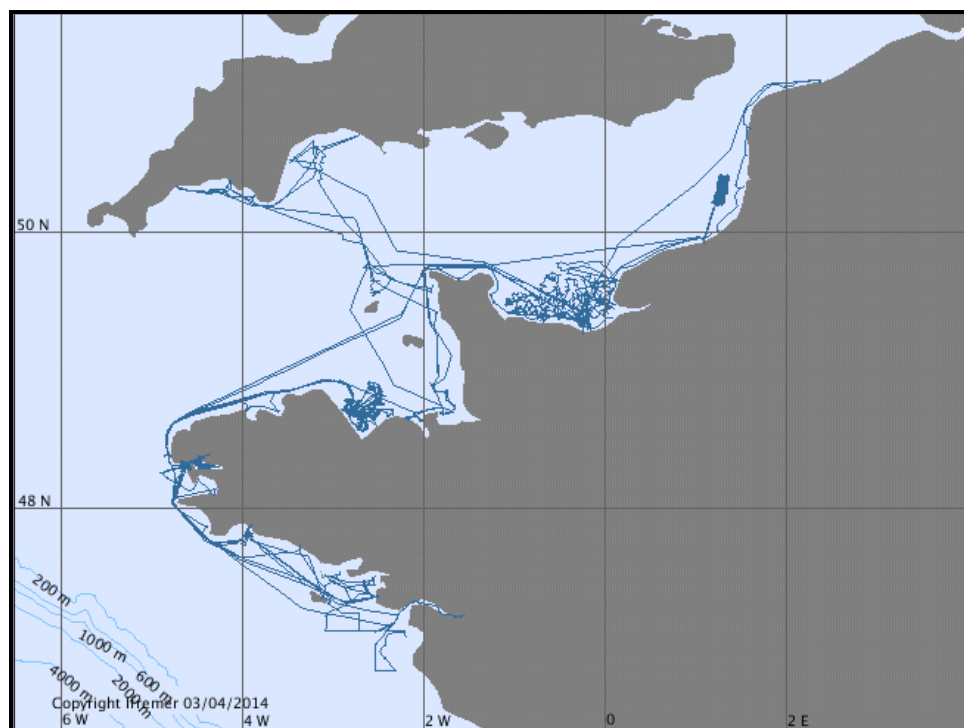


Figure 17 — Tracks of 31 cruises and legs in transit by *Thalia* in 2013

TR_BRECON (Transit)

From 16/11/2013 to 17/11/2013

ESSZEN 5

APPRIOUAL Ronan

From 13/11/2013 to 16/11/2013

TR_CONBRE (Transit)

From 08/11/2013 to 13/11/2013

ESS_REM2040

PACAULT Anne

From 02/11/2013 to 08/11/2013

CARMOLIT2013_LEG2

QUEMENER Loïc

From 30/10/2013 to 30/10/2013

ESCAPADE

BIROT Dominique

From 21/10/2013 to 25/10/2013

TR_SQPON (Transit)

From 17/09/2013 to 20/09/2013

IN VIVO 2013

HUET Jérôme

From 13/09/2013 to 17/09/2013

COSB2013

HUET Jérôme

From 26/08/2013 to 10/09/2013

TR_CONSQP (Transit)

From 23/08/2013 to 26/08/2013

TR_OUICON (Transit)

From 25/07/2013 to 26/07/2013

COMOR 43

FOUCHER Eric

From 03/07/2013 to 25/07/2013

LOLIPOP LEG2

ROBIN Jean-Paul

From 20/06/2013 to 01/07/2013

TR_DUNOUI (Transit)

From 17/06/2013 to 18/07/2013

ROCCHSED13

CHIFFOLEAU Jean-François

From 02/06/2013 to 17/06/2013

TR_NANCON (Transit)

From 28/04/2013 to 28/04/2013

CAMELIA 2

CHIFFOLEAU Jean-François

From 18/04/2013 to 27/04/2013

TR_BRENAN (Transit)

From 16/04/2013 to 17/04/2013

TR_DIEBRE_13TH1 (Transit)

From 14/04/2013 to 16/04/2013

RECOSOM 2 RECUP

SIMPLET Laure

From 02/04/2013 to 14/04/2013

TR_OUIDIE_13TH1 (Transit)

From 30/03/2013 to 02/04/2013

LOLIPOP LEG1

ROBIN Jean-Paul

From 20/03/2013 to 31/03/2013

TR_BRESMA_13TH1 (Transit)

From 18/03/2013 to 19/03/2013

REBENT_RADE 2013

ROCHETTE Sébastien

From 02/03/2013 to 17/03/2013

TR_LTUBRE_13TH1 (Transit)

From 23/02/2013 to 25/02/2013

CARMOLIT2013_LEG1

QUEMENER Loïc

From 22/02/2013 to 23/02/2013

TR_BRELTU_13TH1 (Transit)

From 20/02/2013 to 22/02/2013

REBENT 2013

THIEBAUT Eric

From 08/02/2013 to 18/02/2013

TR_BRELOR_13TH1 (Transit)

From 07/02/2013 to 08/02/2013

ESSTECH_13TH1

LOSSOUARN Hubert

From 29/01/2013 to 07/02/2013

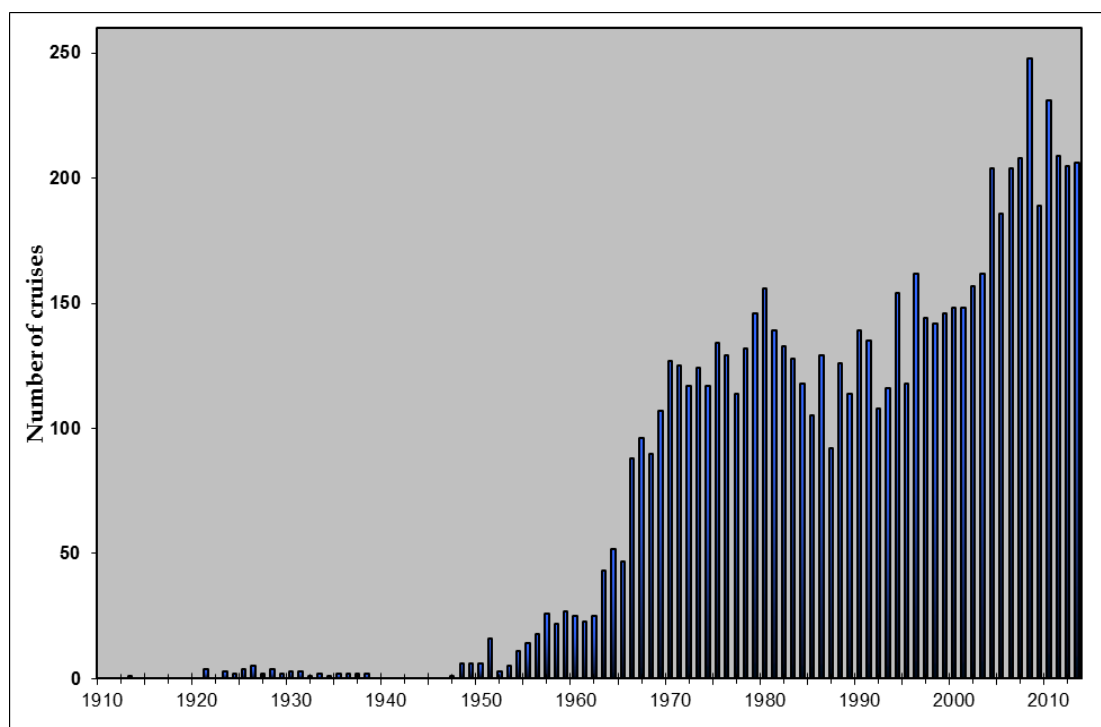
TR_CONBRE_13TH1 (Transit)

From 27/01/2013 to 27/01/2013

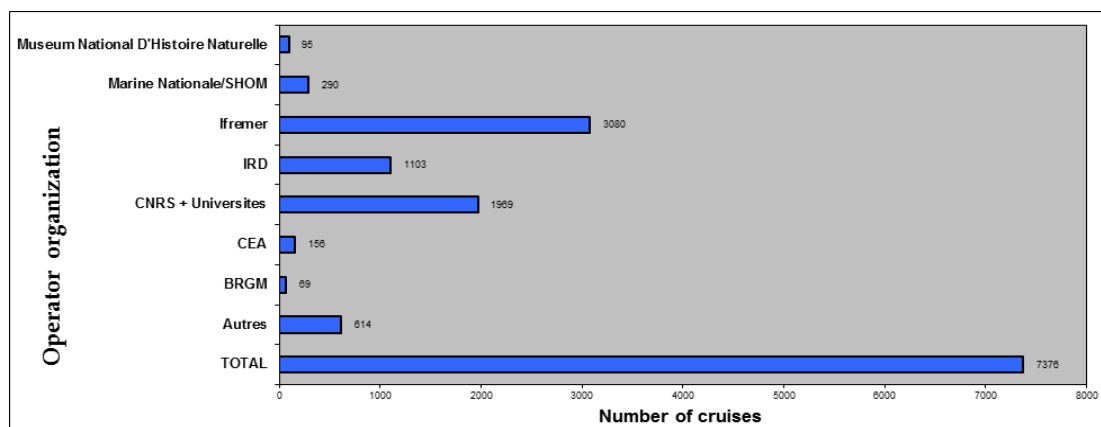
8. Statistics

8.1. Background

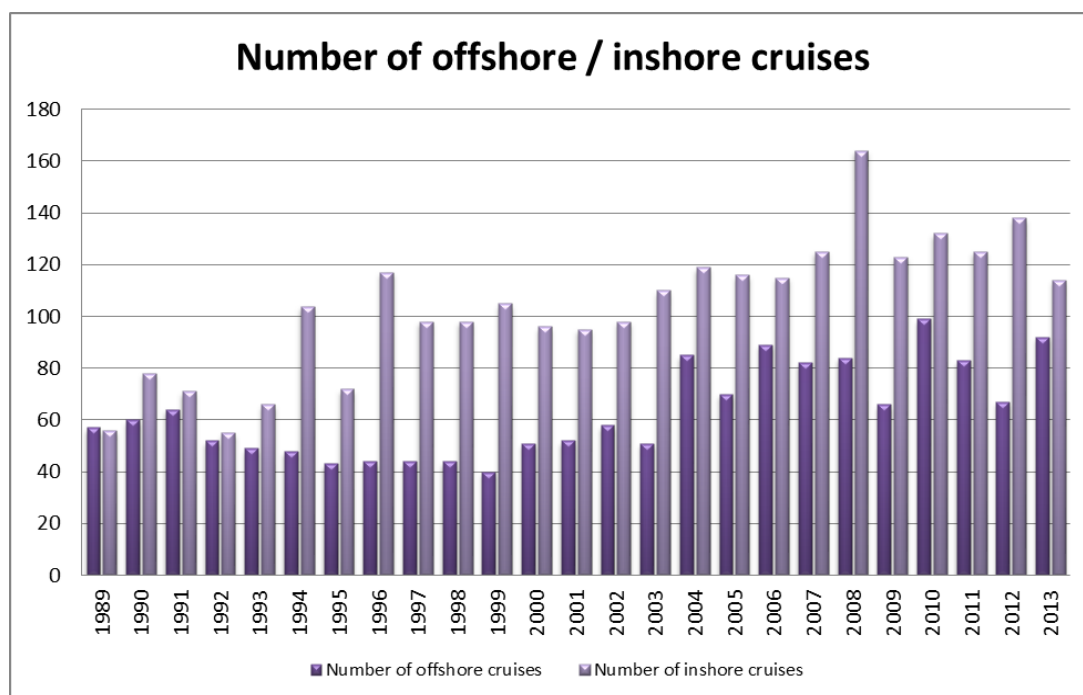
The 7,376 French cruises (including ocean research cruises, simple transit and piggyback missions, sea trial cruises and commercial service provision) since 1913 can be broken down over time, since 1913, as follows:



The main client organizations (usually the organization which the chief scientist belongs to) for these cruises were:



The graph below shows trends for offshore (ship \geq 50 m LOA) and inshore (ship \leq 50 m LOA) cruises over the past 25 years.



The number of both ocean-going and inshore cruises has been growing over these 25 years. However, this seems to have stabilized over the past ten years or so at around 120 cruises per year for offshore vessels and 90 cruises per year for inshore vessels or those belonging to stations.

8.2. In 2013

In 2013, 203 French cruises (oceanographic, trials, transits and commercial services, not classified as "Confidential Defence") were recorded at SISMER.

8.2.1. Breakdown of cruises by managing organization

The managing organization is the shipowner.

Shipowner	Number of cruises
CNRS	19
IFREMER	120
IPEV	12
IRD	26
French Navy/SHOM	25
University Rennes I	1
TOTAL	203

The main organizations are listed in this table, but increasingly often, there will be new organizations which manage the vessels of the stations used by IFREMER teams for inshore cruises very close to the coast.

8.2.2. Breakdown of cruises by client organization

The client organization is the contracting authority requesting the cruise (generally represented by the 1st chief scientist).

Client organization	Number of cruises
BRGM	1
CEA	2
CNRS+UNIVERSITIES	50
IPEV	1
IRD	11
Ifremer	103
Earth physics institute in Paris (IPGP)	2
French Navy/SHOM	33
TOTAL	203

As regards the chief scientists, the same main organizations are present each year. Other organizations appear on a more occasional basis.

8.2.3. List of cruises in 2013

The alphabetical list of cruises performed in 2013 is given below.

Information about each cruise can be accessed via the WEBSITE Nautilus <http://www.ifremer.fr/sismerData/jsp/campagnesALaMer.jsp> by clicking [CTRL + left click] on the name of the cruise.

Cruise	Vessel	Start date	End date	Geographical area	Name of chief scientist	Chief scientist's laboratory
AM-MED-1 LEG1	<i>Le Suroît</i>	28 08 2013	13 09 2013	Western Mediterranean Basin	RABINEAU Marina	UMR 6538 CNRS "OCEAN DOMAINS" (LDO) - IUEM, University of western Brittany (UBO)
AM-MED-1 LEG2	<i>Le Suroît</i>	14 09 2013	25 09 2013	Western Mediterranean Basin	RABINEAU Marina	UMR 6538 CNRS "OCEAN DOMAINS" (LDO) - IUEM, University of western Brittany (UBO)
ANTITHESIS LEG1	<i>L'Atalante</i>	24 11 2013	24 12 2013	Atlantic Ocean	MARCAILLOU Boris	EA4098 LARGE - GEOSCIENCE RESARCH LABORATORY, Université des Antilles et de la Guyane
ANTITHESIS LEG2	<i>Pourquoi pas?</i>	25 12 2013	08 01 2014	Atlantic Ocean	MARCAILLOU Boris	EA4098 LARGE - GEOSCIENCE RESARCH LABORATORY, Université des Antilles et de la Guyane
BARFLEUR BREST CAEN 14	<i>Beautemps-Beaupré</i>	02 07 2013	05 07 2013	English Channel	IETA LE MOIGNE Pierre-Yves	SHOM - BREST CENTER, French Navy/SHOM
BARFLEUR BREST CAEN 16	<i>Beautemps-Beaupré</i>	07 07 2013	07 07 2013	English Channel	IETA LE MOIGNE Pierre-Yves	SHOM - BREST CENTER, French Navy/SHOM
BARFLEUR BREST CAEN 18	<i>Beautemps-Beaupré</i>	08 07 2013	09 07 2013	English Channel	IETA LE MOIGNE Pierre-Yves	SHOM - BREST CENTER, French Navy/SHOM
BILLION 35	<i>Téthys II</i>	02 11 2013	09 11 2013	Western Mediterranean Basin	KUNESCH Stéphane	CEFREM, University of Perpignan
BIOBAZ 2013	<i>Pourquoi pas?</i>	02 08 2013	21 08 2013	NE Atlantic (40 W boundary)	LALLIER François	ROSCOFF BIOLOGICAL STATION, CNRS
BOURGNEUF 2013	<i>Haliotis</i>	06 06 2013	06 07 2013	Bay of Biscay	MAANAN Mohamed	LETG - LITTORAL ENVIRONMENT REMOTE SENSING GEOMATICS, University of Nantes
BOUSSOLE 2013	<i>Téthys II</i>	21 01 2013	14 12 2013	Ligurian Sea	GOLBOL Melek	OCEANOGRAPHY LABORATORY OF VILLEFRANCHE (LOV), University of Paris VI - UPMC
BREBENT-02	<i>Côtes De La Manche</i>	19 03 2013	23 05 2013	English Channel	CARLIER Antoine	DYNECO/BENTHOS- BENTHIC ECOLOGY LABORATORY, Ifremer
CALICO	<i>Alis</i>	14 10 2013	27 10 2013	SW Pacific (Limit 140 W)	LE ROY Pascal	UMR 6538 CNRS "OCEAN DOMAINS" (LDO) - IUEM, University of western Brittany (UBO)
CAMELIA 2	<i>Thalia</i>	18 04 2013	27 04 2013	Bay of Biscay	CHIFFOLEAU Jean-François	DPT RBE / UR BIOGEOCHEMISTRY & ECOTOXICOLOGY (NANTES), Ifremer
CARBODELTA	<i>Téthys II</i>	26 02 2013	30 04 2013	Western Mediterranean Basin	RABOUILLE Christophe	CLIMATE AND ENVIRONMENTAL SCIENCES LABORATORY, CEA

Cruise	Vessel	Start date	End date	Geographical area	Name of chief scientist	Chief scientist's laboratory
CARMOLIT2013_LEG1	<i>Thalia</i>	22 02 2013	23 02 2013	Bay of Biscay	QUEMENER Loïc	RDT - DPT TECHNOLOGICAL RESEARCH & DEVELOPMENT, Ifremer
CARMOLIT2013_LEG2	<i>Thalia</i>	30 10 2013	30 10 2013	NW Atlantic (40 W boundary)	QUEMENER Loïc	RDT - DPT TECHNOLOGICAL RESEARCH & DEVELOPMENT, Ifremer
CGFS2013	<i>Gwen Drez</i>	06 10 2013	04 11 2013	English Channel	LE ROY Didier	STH- FISHERIES SCIENCES AND TECHNOLOGIES DEPARTMENT, Ifremer
CIRCEE	<i>Le Suroît</i>	03 10 2013	24 10 2013	Ionian Sea	GUTSCHER Marc-André	UMR 6538 CNRS "OCEAN DOMAINS" (LDO) - IUEM, University of western Brittany (UBO)
COBELO	<i>Alis</i>	08 11 2013	18 11 2013	SW Pacific (Limit 140 W)	FAUVELOT Cécile	IRD NOUMEA CENTER, IRD
COLMEIA	<i>L'Atalante</i>	23 01 2013	28 02 2013	NE Atlantic (40 W boundary)	MAIA Marcia	UMR 6538 CNRS "OCEAN DOMAINS" (LDO) - IUEM, University of western Brittany (UBO)
COMET_BREST_LASPALMAS	<i>Beautemps-Beaupré</i>	27 09 2013	28 09 2013	Atlantic Ocean	IETA MATHIAS	SHOM - BREST CENTER, French Navy/SHOM
COMET_BREST_TENERIFE	<i>Beautemps-Beaupré</i>	26 02 2013	01 03 2013	North Atlantic Ocean	IPETA LEVIEUGE Daniel	SHOM - BREST CENTER, French Navy/SHOM
COMOR 43	<i>Thalia</i>	03 07 2013	25 07 2013	English Channel	FOUCHER Eric	IFREMER PORT EN BESSIN STATION, Ifremer
CORALCORSE	<i>L'Europe</i>	02 08 2013	10 09 2013	Tyrrhenian Sea	CLABAUT Philippe	CONSULTANT GEOLOGY
COSB2013	<i>Thalia</i>	26 08 2013	10 09 2013	English Channel	HUET Jérôme	STH- FISHERIES SCIENCES AND TECHNOLOGIES DEPARTMENT, Ifremer
CROCOLIT LEG1	<i>Haliotis</i>	29 03 2013	01 04 2013	English Channel	DUPERRET Anne	LOMC UMR 6294 - PRONY SITE, CNRS
CROCOLIT LEG2	<i>Haliotis</i>	27 04 2013	20 05 2013	NE Atlantic (40 W boundary)	DUPERRET Anne	LOMC UMR 6294 - PRONY SITE, CNRS
CROCOLIT LEG3	<i>Haliotis</i>	11 10 2013	14 10 2013	NE Atlantic (40 W boundary)	DUPERRET Anne	LOMC UMR 6294 - PRONY SITE, CNRS
DEWEX-MERMEX 2013 LEG1	<i>Le Suroît</i>	01 02 2013	22 02 2013	Western Mediterranean Basin	TESTOR Pierre	LOCEAN (OCEANOGRAPHY AND CLIMATE LABORATORY), UMR 7159, University of Paris VI - UPMC

Cruise	Vessel	Start date	End date	Geographical area	Name of chief scientist	Chief scientist's laboratory
DEWEX-MERMEX 2013 LEG2	<i>Le Suroît</i>	03 04 2013	26 04 2013	Western Mediterranean Basin	CONAN Pascal	OCEANOLOGICAL OBSERVATORY OF BANYULS (OOB), UNIVERSITY OF PARIS VI
DIVACOU 6	<i>L'Europe</i>	13 05 2013	22 05 2013	Western Mediterranean Basin	EDMOND Toussaint	IFREMER TOULON CENTER, Ifremer
DOWEX2013	<i>Téthys II</i>	22 09 2013	06 10 2013	Western Mediterranean Basin	MORTIER Laurent	LOCEAN (OCEANOGRAPHY AND CLIMATE LABORATORY), UMR 7159, University of Paris VI - UPMC
ECOAO	<i>Antea</i>	05 03 2013	20 03 2013	NE Atlantic (40 W boundary)	BREHMER Patrice	MARINE ENVIRONMENTAL SCIENCES LABORATORY (LEMAR), CNRS
EPURE 1	<i>Antea</i>	27 06 2013	02 08 2013	NE Atlantic (40 W boundary)	DESCHAMPS Anne	UMR 6538 CNRS "OCEAN DOMAINS" (LDO) - IUEM, University of western Brittany (UBO)
EPURE 2	<i>Antea</i>	07 11 2013	11 12 2013	NE Atlantic (40 W boundary)	DESCHAMPS Anne	UMR 6538 CNRS "OCEAN DOMAINS" (LDO) - IUEM, University of western Brittany (UBO)
ESCAPADE	<i>Thalia</i>	21 10 2013	25 10 2013	Bay of Biscay	BIROT Dominique	GM- MARINE GEOSCIENCES, Ifremer
ESSAUV 13	<i>Le Suroît</i>	31 10 2013	01 11 2013	Western Mediterranean Basin	OPDERBECKE Jan	IFREMER TOULON CENTER, Ifremer
ESS BASES 13	<i>Le Suroît</i>	23 07 2013	26 07 2013	Bay of Biscay	FLOCH Henri	NSE - VESSELS AND SHIPBOARD SYSTEMS, Ifremer
ESSBOB	<i>L'Europe</i>	17 09 2013	23 09 2013	Ligurian Sea	SCALABRIN Carla	GM- MARINE GEOSCIENCES, Ifremer
ESSDIV 13AN1	<i>Antea</i>	05 02 2013	07 02 2013	Western Mediterranean Basin	TREDUNIT Gilles	GENAVIR BREST, Ifremer
ESSDIV 13AN2	<i>Antea</i>	19 06 2013	20 06 2013	Western Mediterranean Basin	GOULOUZELLE Loic	GENAVIR BREST, Ifremer
ESSDIV 13AN3	<i>Antea</i>	31 10 2013	31 10 2013	Western Mediterranean Basin	PIETE Helen	UMR 6538 CNRS "OCEAN DOMAINS" (LDO) - IUEM, University of western Brittany (UBO)
ESS GRAVIBUC	<i>Pourquoi pas?</i>	09 03 2013	11 03 2013	Celtic Sea	BEUCHARD Sébastien	SHOM - BREST CENTER, French Navy/SHOM
ESSGRAV12	<i>Pourquoi pas?</i>	27 03 2013	29 03 2013	Celtic Sea	BEUCHARD Sébastien	SHOM - BREST CENTER, French Navy/SHOM

Cruise	Vessel	Start date	End date	Geographical area	Name of chief scientist	Chief scientist's laboratory
ESSNAUT 13	<i>L'Atalante</i>	02 10 2013	14 10 2013	Western Mediterranean Basin	TRIGER Pierre	GENAVIR LA SEYNE SUR MER, Ifremer
ESS PAM	<i>L'Atalante</i>	26 09 2013	27 09 2013	Western Mediterranean Basin	LE GALL Yves	NSE - VESSELS AND SHIPBOARD SYSTEMS, Ifremer
ESS PANACHE	<i>Gwen Drez</i>	02 10 2013	05 10 2013	English Channel	LE ROY Didier	STH- FISHERIES SCIENCES AND TECHNOLOGIES DEPARTMENT, Ifremer
ESS PROP 13	<i>Thalassa</i>	05 09 2013	07 09 2013	Bay of Biscay	PAYET Jean-Claude	GENAVIR BREST, Ifremer
ESS REM2040	<i>Thalia</i>	02 11 2013	08 11 2013	Celtic Sea	PACAULT Anne	NSE - VESSELS AND SHIPBOARD SYSTEMS, Ifremer
ESSROV	<i>Pourquoi pas?</i>	29 10 2013	05 11 2013	Western Mediterranean Basin	CHRISTOPHE Alain	GENAVIR LA SEYNE SUR MER, Ifremer
ESS SMF 13SU1	<i>Le Suroît</i>	01 03 2013	04 03 2013	Western Mediterranean Basin	LOSSOUARN Hubert	GENAVIR BREST, Ifremer
ESS SYPEN	<i>Pourquoi pas?</i>	13 03 2013	26 03 2013	NE Atlantic (40 W boundary)	LEON Pierre	IFREMER TOULON CENTER, Ifremer
ESSTECH 13EU1	<i>L'Europe</i>	23 02 2013	23 02 2013	Western Mediterranean Basin	VIOLLETTE Pascal	GENAVIR BREST, Ifremer
ESSTECH 13GW1	<i>Gwen Drez</i>	24 04 2013	24 04 2013	Bay of Biscay	VIOLLETTE Pascal	GENAVIR BREST, Ifremer
ESSTECH 13HA1	<i>Haliotis</i>	19 02 2013	20 02 2013	Celtic Sea	BISQUAY Hervé	GENAVIR BREST, Ifremer
ESSTECH 13TH1	<i>Thalia</i>	29 01 2013	07 02 2013	Bay of Biscay	LOSSOUARN Hubert	GENAVIR BREST, Ifremer
ESSZEN 5	<i>Thalia</i>	13 11 2013	16 11 2013	Celtic Sea	APPROUVAL Ronan	GM- MARINE GEOSCIENCES, Ifremer
ESTUSOM 2013 - LEG 1	<i>Haliotis</i>	02 03 2013	27 03 2013	English Channel	MICHEL Charlotte	GEOLOGY LABORATORY UMR CNRS 6143 'MC2', University of Rouen
ESTUSOM 2013 - LEG 2	<i>Haliotis</i>	14 09 2013	09 10 2013	English Channel	MICHEL Charlotte	GEOLOGY LABORATORY UMR CNRS 6143 'MC2', University of Rouen

Cruise	Vessel	Start date	End date	Geographical area	Name of chief scientist	Chief scientist's laboratory
EVHOE 2013	<i>Thalassa</i>	17 10 2013	01 12 2013	Bay of Biscay	SALAUN Michèle	STH/LBP- FISHERIES BIOLOGY LABORATORY, Ifremer
FABLES 4	<i>Téthys II</i>	01 09 2013	04 09 2013	Ligurian Sea	MIGEON Sébastien	GEOSCIENCES AZUR - VILLEFRANCHE SITE, University of Paris VI - UPMC
FEBBE-1	<i>Gwen Drez</i>	22 05 2013	01 06 2013	Bay of Biscay	LAFFARGUE Pascal	EMH- ECOLOGY AND MODELS FOR FISHERIES SCIENCE DEPARTMENT, Ifremer
FEBBE-2	<i>Gwen Drez</i>	20 08 2013	29 08 2013	Bay of Biscay	LAFFARGUE Pascal	EMH- ECOLOGY AND MODELS FOR FISHERIES SCIENCE DEPARTMENT, Ifremer
FISSEL 2013	<i>Haliotis</i>	23 05 2013	03 06 2013	Bay of Biscay	HENAFF Alain	GEOMER - UMR 6554 LETG (LITTORAL, ENV., REMOTE SENSING.GEOMAT.), University of western Brittany (UBO)
GEODEVA6_NC2013	<i>Alis</i>	20 11 2013	30 11 2013	SW Pacific (140 W boundary)	BALLU Valérie	LITTORAL ENVIRONMENT & SOCIETIES (LIENSS) - UMR 7266, University of La Rochelle
HAITI-SIS2	<i>L'Atalante</i>	06 11 2013	20 11 2013	Caribbean Sea	LEROY Sylvie	INSTITUTE OF EARTH SCIENCES IN PARIS - UMR 7193 ISTEP, University of Paris VI - UPMC
HYMEX SOP2	<i>Téthys II</i>	27 01 2013	11 05 2013	Western Mediterranean Basin	TAUPIER-LETAGE Isabelle	COM / LAB. OCEANOLOG. PHYSICS & BIOGEOCHEMISTRY (LOPB) - TOULON, CNRS
IBTS 2013	<i>Thalassa</i>	15 01 2013	14 02 2013	North Sea	VERIN Yves	HMMN- ENGLISH CHANNEL-NORTH SEA FISHERIES SCIENCES DEPARTMENT, Ifremer
IGUANES	<i>L'Atalante</i>	29 04 2013	21 05 2013	Atlantic Ocean	LONCKE Lie	CEFREM, University of Perpignan
IN VIVO 2013	<i>Thalia</i>	13 09 2013	17 09 2013	English Channel	HUET Jérôme	STH- FISHERIES SCIENCES AND TECHNOLOGIES DEPARTMENT, Ifremer
JUMPER	<i>Gwen Drez</i>	26 04 2013	02 05 2013	Bay of Biscay	VINCENT Benoît	IFREMER LORIENT STATION, Ifremer
LADEROUTE BREST STMALO	<i>Beautemps-Beaupré</i>	03 08 2013	09 08 2013	English Channel	IETA MATHIAS	SHOM - BREST CENTER, French Navy/SHOM
LADEROUTE STMALO BREST1	<i>Beautemps-Beaupré</i>	16 07 2013	17 07 2013	English Channel	IETA MATHIAS	SHOM - BREST CENTER, French Navy/SHOM
LADEROUTE STMALO BREST2	<i>Beautemps-Beaupré</i>	18 07 2013	26 07 2013	English Channel	IETA MATHIAS	SHOM - BREST CENTER, French Navy/SHOM

Cruise	Vessel	Start date	End date	Geographical area	Name of chief scientist	Chief scientist's laboratory
LADEROUTE_STMALO_BREST3	<i>Beautemps-Beaupré</i>	13 08 2013	21 08 2013	English Channel	IETA MATHIAS	SHOM - BREST CENTER, French Navy/SHOM
LANGOLF 2013	<i>Gwen Drez</i>	03 05 2013	21 05 2013	Bay of Biscay	GARREN François	STH- FISHERIES SCIENCES AND TECHNOLOGIES DEPARTMENT, Ifremer
LOLIPOP LEG1	<i>Thalia</i>	20 03 2013	31 03 2013	English Channel	ROBIN Jean-Paul	LAB. MARINE BIOLOGY AND BIOTECHNOLOGIES - UMR M 100 - LBBM, University of Caen
LOLIPOP LEG2	<i>Thalia</i>	20 06 2013	01 07 2013	English Channel	ROBIN Jean-Paul	LAB. MARINE BIOLOGY AND BIOTECHNOLOGIES - UMR M 100 - LBBM, University of Caen
LOSS	<i>Alis</i>	28 10 2013	06 11 2013	Coral Sea	MARIN Frédéric	IRD NOUMEA CENTER, IRD
MASTODON	<i>Côtes De La Manche</i>	01 11 2013	06 11 2013	Bay of Biscay	LAZURE Pascal	DYNECO/PHYSED- HYDRODYNAMICS AND SEDIMENTARY PHYSICS LABORATORY, Ifremer
MD 193 / LOGIPEV	<i>Marion Dufresne</i>	06 02 2013	13 03 2013	Antarctic Ocean	SANGIARDI Pierre	PAUL-EMILE VICTOR FRENCH POLAR INSTITUTE (IPEV), IPEV
MEDITS 2013	<i>L'Europe</i>	23 05 2013	26 06 2013	Western Mediterranean Basin	JADAUD Angélique	IFREMER SETE STATION, Ifremer
MERCAUX	<i>Côtes De La Manche</i>	30 08 2013	10 09 2013	English Channel	PAQUET Fabien	BUREAU OF GEOLOGY & MIN. RESEARCH/GEO (BRGM, ORLEANS), BRGM
MEUST	<i>Téthys II</i>	01 08 2013	04 08 2013	Western Mediterranean Basin	GOJAK Carl	INSU TECHNICAL DIVISION, CNRS
MOMARSAT2013	<i>Pourquoi pas?</i>	23 08 2013	07 09 2013	NE Atlantic (40 W boundary)	BLANDIN Jérôme	RDT - DPT TECHNOLOGICAL RESEARCH & DEVELOPMENT, Ifremer
MOOSE (ANTARES)	<i>Téthys II</i>	25 01 2013	10 12 2013	Western Mediterranean Basin	LEFEVRE Dominique	MEDITERRANEAN INSTITUTE OF OCEANOGRAPHY (MIO) - LUMINY, University of the Mediterranean (U2)
MOOSE (DYFAMED)	<i>Téthys II</i>	19 01 2013	10 12 2013	Ligurian Sea	DIAMOND Emilie	OCEANOGRAPHY LABORATORY OF VILLEFRANCHE (LOV), University of Paris VI - UPMC
MOOSE GE	<i>Téthys II</i>	12 06 2013	09 07 2013	Western Mediterranean Basin	TESTOR Pierre	LOCEAN (OCEANOGRAPHY AND CLIMATE LABORATORY), UMR 7159, University of Paris VI - UPMC
NURSE 2013	<i>Gwen Drez</i>	01 09 2013	17 09 2013	Bay of Biscay	BRIND'AMOUR Anik	EMH- ECOLOGY AND MODELS FOR FISHERIES SCIENCE DEPARTMENT, Ifremer

Cruise	Vessel	Start date	End date	Geographical area	Name of chief scientist	Chief scientist's laboratory
OCEANOGRAFU	<i>L'Atalante</i>	05 06 2013	02 07 2013	NE Atlantic (40 W boundary)	LUCAZEAU Francis	EARTH PHYSICS INSTITUTE PARIS IPGP, Institut de Physique du Globe de Paris
ODEMAR	<i>Pourquoi pas?</i>	15 11 2013	20 12 2013	North Atlantic Ocean	ESCARTIN Javier	EARTH PHYSICS INSTITUTE PARIS IPGP, Institut de Physique du Globe de Paris
ORHAGO 13	<i>Gwen Drez</i>	09 11 2013	03 12 2013	Bay of Biscay	COUPEAU Yann	IFREMER LA ROCHELLE-L'HOUMEAU STATION, Ifremer
PELGAS 2013	<i>Thalassa</i>	22 04 2013	04 06 2013	Bay of Biscay	DORAY Mathieu	EMH- ECOLOGY AND MODELS FOR FISHERIES SCIENCE DEPARTMENT, Ifremer
PELMED 2013	<i>L'Europe</i>	27 06 2013	24 07 2013	Western Mediterranean Basin	BIGOT Jean-Louis	IFREMER SETE STATION, Ifremer
PEPSEA-2	<i>L'Europe</i>	25 02 2013	28 02 2013	Western Mediterranean Basin	MUNARON Dominique	IFREMER SETE STATION, Ifremer
PERSMED I	<i>L'Europe</i>	20 11 2013	26 11 2013	Western Mediterranean Basin	TRONCZYNSKI Jacek	DPT RBE / UR BIOGEOCHEMISTRY & ECOTOXICOLOGY (NANTES), Ifremer
PHYTEC	<i>Côtes De La Manche</i>	21 06 2013	29 06 2013	NE Atlantic (40 W boundary)	LUNVEN Michel	DYNECO/PELAGOS- PELAGIC ECOLOGY LABORATORY, Ifremer
PIRATA-FR23 LEG1	<i>Le Suroît</i>	11 05 2013	29 05 2013	Atlantic Ocean	GRELET Jacques	IRD BRITTANY CENTER, IRD
PIRATA-FR23 LEG2	<i>Le Suroît</i>	01 06 2013	18 06 2013	Atlantic Ocean	BOURLES Bernard	IRD BRITTANY CENTER, IRD
POLYPERL	<i>Alis</i>	24 04 2013	28 05 2013	South Pacific	ANDREFOUET Serge	IRD NOUMEA CENTER, IRD
PRISME 2	<i>L'Atalante</i>	14 07 2013	04 08 2013	Western Mediterranean Basin	CATTANEO Antonio	GM- MARINE GEOSCIENCES, Ifremer
PRISME 3	<i>Pourquoi pas?</i>	07 10 2013	25 10 2013	Western Mediterranean Basin	CATTANEO Antonio	GM- MARINE GEOSCIENCES, Ifremer
PRISTINE POLYNESIE	<i>Alis</i>	04 06 2013	18 06 2013	South Pacific	VIGLIOLA Laurent	IRD NOUMEA CENTER, IRD
PRISTINE TONGA	<i>Alis</i>	02 07 2013	15 07 2013	SW Pacific (140 W boundary)	VIGLIOLA Laurent	IRD NOUMEA CENTER, IRD

Cruise	Vessel	Start date	End date	Geographical area	Name of chief scientist	Chief scientist's laboratory
PROTEVS_DUNES	<i>Beautemps-Beaupré</i>	27 08 2013	11 09 2013	Atlantic Ocean	IETA MATHIAS	SHOM - BREST CENTER, French Navy/SHOM
PROTEVS_2013_LEG1	<i>Thalassa</i>	17 09 2013	28 09 2013	North Atlantic Ocean	IPA THEUILLON Gwladys	SHOM - BREST CENTER, French Navy/SHOM
PROTEVS_2013_LEG2	<i>Thalassa</i>	01 10 2013	14 10 2013	North Atlantic Ocean	IPA THEUILLON Gwladys	SHOM - BREST CENTER, French Navy/SHOM
RADLIT	<i>Téthys II</i>	28 03 2013	03 04 2013	Western Mediterranean Basin	RADAKOVITCH Olivier	CEREGE, University Paul Cézanne (Aix-Marseille III)
RAZ_BLANCHARD_BREST_CAEN_13	<i>Beautemps-Beaupré</i>	01 07 2013	02 07 2013	English Channel	IETA LE MOIGNE Pierre-Yves	SHOM - BREST CENTER, French Navy/SHOM
RAZ_BLANCHARD_BREST_CAEN_15	<i>Beautemps-Beaupré</i>	05 07 2013	07 07 2013	English Channel	IETA LE MOIGNE Pierre-Yves	SHOM - BREST CENTER, French Navy/SHOM
RAZ_BLANCHARD_BREST_CAEN_17	<i>Beautemps-Beaupré</i>	08 07 2013	08 07 2013	English Channel	IETA LE MOIGNE Pierre-Yves	SHOM - BREST CENTER, French Navy/SHOM
RAZ_BLANCHARD_CAEN_STMALO_19	<i>Beautemps-Beaupré</i>	11 07 2013	11 07 2013	English Channel	IETA LE MOIGNE Pierre-Yves	SHOM - BREST CENTER, French Navy/SHOM
RAZ_BLANCHARD_CAEN_STMALO_21	<i>Beautemps-Beaupré</i>	17 07 2013	18 07 2013	English Channel	IETA LE MOIGNE Pierre-Yves	SHOM - BREST CENTER, French Navy/SHOM
REBENT_2013	<i>Thalia</i>	08 02 2013	18 02 2013	NE Atlantic (40 W boundary)	THIEBAUT Eric	ROSCOFF BIOLOGICAL STATION, CNRS
REBENT_RADE_2013	<i>Thalia</i>	02 03 2013	17 03 2013	Celtic Sea	ROCHETTE Sébastien	DYNECO/GEOMATICS APPLICATIONS (AG), Ifremer
REB-RAD-AL-2013	<i>Albert Lucas</i>	04 03 2013	05 03 2013	Celtic Sea	CARLIER Antoine	DYNECO/BENTHOS- BENTHIC ECOLOGY LABORATORY, Ifremer
REB-RAD-H-2013	<i>Haliotis</i>	09 07 2013	12 07 2013	Celtic Sea	CARLIER Antoine	DYNECO/BENTHOS- BENTHIC ECOLOGY LABORATORY, Ifremer
RECO SOM 2 RECUP	<i>Thalia</i>	02 04 2013	14 04 2013	English Channel	SIMPLET Laure	GM- MARINE GEOSCIENCES, Ifremer
ROCCHSED13	<i>Thalia</i>	02 06 2013	17 06 2013	English Channel	CHIFFOLEAU Jean-François	DPT RBE / UR BIOGEOCHEMISTRY & ECOTOXICOLOGY (NANTES), Ifremer

Cruise	Vessel	Start date	End date	Geographical area	Name of chief scientist	Chief scientist's laboratory
SHARKS	<i>Côtes De La Manche</i>	26 04 2013	27 05 2013	English Channel	LE GENDRE Romain	IFREMER PORT EN BESSIN STATION, Ifremer
SIMBAD	<i>Téthys II</i>	03 01 2013	18 01 2013	Western Mediterranean Basin	MAILLARD Agnès	GEOSCIENCES ENVIRONNEMENT TOULOUSE (GET), University of Toulouse III
SOLVEIG IV-1	<i>L'Europe</i>	11 09 2013	16 09 2013	Western Mediterranean Basin	SILVA JACINTO Ricardo	GM- MARINE GEOSCIENCES, Ifremer
SOLVEIG IV-2	<i>L'Europe</i>	04 12 2013	09 12 2013	Western Mediterranean Basin	SILVA JACINTO Ricardo	GM- MARINE GEOSCIENCES, Ifremer
SPOT2013	<i>Alis</i>	10 02 2013	07 12 2013	Pacific Ocean	AUCAN Jérôme	IRD NOUMEA CENTER, IRD
STEP 2013	<i>L'Europe</i>	04 03 2013	11 03 2013	Ligurian Sea	APPROUVAL Ronan	GM- MARINE GEOSCIENCES, Ifremer
SURVOSTRAL 2013/2014	<i>L'Astrolabe</i>	03 12 2013	14 03 2014	Antarctic Ocean	MORROW-GREINER Rosemary	LEGOS, CNRS
TAHITIITI	<i>Alis</i>	12 04 2013	23 04 2013	Pacific Ocean	DEBITUS Cécile	IRD PAPEETE CENTER, IRD
TR_ABICON	<i>Le Suroît</i>	22 06 2013	05 07 2013	Atlantic Ocean	Transit with no chief scientist.	GENAVIR BREST, Ifremer
TR_AGASEY	<i>Antea</i>	02 08 2013	09 08 2013	Undetermined	Transit with no chief scientist.	GENAVIR BREST, Ifremer
TR_BOUBRE	<i>Thalassa</i>	16 02 2013	18 02 2013	Undetermined	Transit with no chief scientist.	GENAVIR BREST, Ifremer
TR_BRECON	<i>Thalia</i>	16 11 2013	17 11 2013	Bay of Biscay	Transit with no chief scientist.	GENAVIR BREST, Ifremer
TR_BRELOR_13TH1	<i>Thalia</i>	07 02 2013	08 02 2013	Undetermined	Transit with no chief scientist.	GENAVIR BREST, Ifremer
TR_BRELTU_13TH1	<i>Thalia</i>	20 02 2013	22 02 2013	Undetermined	Transit with no chief scientist.	GENAVIR BREST, Ifremer
TR_BRENAN	<i>Thalia</i>	16 04 2013	17 04 2013	NE Atlantic (40 W boundary)	Transit with no chief scientist.	GENAVIR BREST, Ifremer

Cruise	Vessel	Start date	End date	Geographical area	Name of chief scientist	Chief scientist's laboratory
TR BRESMA 13TH1	<i>Thalia</i>	18 03 2013	19 03 2013	Undetermined	Transit with no chief scientist.	GENAVIR BREST, Ifremer
TR CATSEY	<i>Le Suroît</i>	26 10 2013	28 10 2013	Western Mediterranean Basin	Transit with no chief scientist.	GENAVIR BREST, Ifremer
TR CAYPDA	<i>L'Atalante</i>	24 05 2013	03 06 2013	North Atlantic Ocean	Transit with no chief scientist.	GENAVIR BREST, Ifremer
TR CONBOU	<i>Gwen Drez</i>	29 09 2013	01 10 2013	English Channel	Transit with no chief scientist.	GENAVIR BREST, Ifremer
TR CONBRE	<i>Thalia</i>	08 11 2013	13 11 2013	NE Atlantic (40 W boundary)	Transit with no chief scientist.	GENAVIR BREST, Ifremer
TR CONBRE 13TH1	<i>Thalia</i>	27 01 2013	27 01 2013	Undetermined	Transit with no chief scientist.	GENAVIR BREST, Ifremer
TR CONCDB	<i>Gwen Drez</i>	31 08 2013	01 09 2013	Bay of Biscay	Transit with no chief scientist.	GENAVIR BREST, Ifremer
TR CONLOR	<i>Gwen Drez</i>	18 08 2013	19 08 2013	Bay of Biscay	Transit with no chief scientist.	GENAVIR BREST, Ifremer
TR CONSQP	<i>Thalia</i>	23 08 2013	26 08 2013	North Atlantic Ocean	Transit with no chief scientist.	GENAVIR BREST, Ifremer
TR CORSEY	<i>Le Suroît</i>	10 08 2013	15 08 2013	Mediterranean	Transit with no chief scientist.	GENAVIR BREST, Ifremer
TR DAKTLN	<i>Antea</i>	22 03 2013	01 04 2013	North Atlantic Ocean	Transit with no chief scientist.	GENAVIR BREST, Ifremer
TR DIEBRE 13TH1	<i>Thalia</i>	14 04 2013	16 04 2013	Undetermined	Transit with no chief scientist.	GENAVIR BREST, Ifremer
TR DUNOU1	<i>Thalia</i>	17 06 2013	18 07 2013	English Channel	Transit with no chief scientist.	GENAVIR BREST, Ifremer
TR FDFRCF	<i>L'Atalante</i>	08 01 2013	21 01 2013	SE Atlantic (20 W boundary)	Transit with no chief scientist.	GENAVIR BREST, Ifremer
TR HAOPPT	<i>Alis</i>	17 06 2013	21 06 2013	South Pacific	Transit with no chief scientist.	GENAVIR BREST, Ifremer

Cruise	Vessel	Start date	End date	Geographical area	Name of chief scientist	Chief scientist's laboratory
TR LHACOR	<i>Pourquoi pas?</i>	07 09 2013	12 09 2013	NE Atlantic (40 W boundary)	Transit with no chief scientist.	GENAVIR BREST, Ifremer
TR LTUBRE 13TH1	<i>Thalia</i>	23 02 2013	25 02 2013	Undetermined	Transit with no chief scientist.	GENAVIR BREST, Ifremer
TR NANCON	<i>Thalia</i>	28 04 2013	28 04 2013	NE Atlantic (40 W boundary)	Transit with no chief scientist.	GENAVIR BREST, Ifremer
TR NMAPPT	<i>Alis</i>	16 02 2013	03 03 2013	South Pacific	Transit with no chief scientist.	GENAVIR BREST, Ifremer
TR NUKNMA	<i>Alis</i>	15 07 2013	20 07 2013	South Pacific	Transit with no chief scientist.	GENAVIR BREST, Ifremer
TR QUICON	<i>Thalia</i>	25 07 2013	26 07 2013	English Channel	Transit with no chief scientist.	GENAVIR BREST, Ifremer
TR OUIDIE 13TH1	<i>Thalia</i>	30 03 2013	02 04 2013	Undetermined	Transit with no chief scientist.	GENAVIR BREST, Ifremer
TR PDATLN	<i>L'Atalante</i>	04 07 2013	12 07 2013	NE Atlantic (40 W boundary)	Transit with no chief scientist.	GENAVIR BREST, Ifremer
TR PPTMGA	<i>Alis</i>	28 05 2013	03 06 2013	South Pacific	Transit with no chief scientist.	GENAVIR BREST, Ifremer
TR PPTNUK	<i>Alis</i>	26 06 2013	02 07 2013	South Pacific	Transit with no chief scientist.	GENAVIR BREST, Ifremer
TR RCFCAY	<i>L'Atalante</i>	17 04 2013	24 04 2013	SE Atlantic (20 W boundary)	Transit with no chief scientist.	GENAVIR BREST, Ifremer
TR SEYCAT	<i>Le Suroît</i>	28 09 2013	01 10 2013	Mediterranean	Transit with no chief scientist.	GENAVIR BREST, Ifremer
TR SEYMAR	<i>L'Europe</i>	25 02 2013	25 02 2013	Undetermined	Transit with no chief scientist.	GENAVIR BREST, Ifremer
TR SEYMAR	<i>L'Atalante</i>	22 09 2013	23 09 2013	Western Mediterranean Basin	Transit with no chief scientist.	GENAVIR BREST, Ifremer
TR SEYPAP	<i>L'Atalante</i>	17 10 2013	01 11 2013	North Atlantic Ocean	Transit with no chief scientist.	GENAVIR BREST, Ifremer

Cruise	Vessel	Start date	End date	Geographical area	Name of chief scientist	Chief scientist's laboratory
TR_SNZCON	<i>Gwen Drez</i>	18 09 2013	19 09 2013	Bay of Biscay	Transit with no chief scientist.	GENAVIR BREST, Ifremer
TR_SQPCON	<i>Thalia</i>	17 09 2013	20 09 2013	NE Atlantic (40 W boundary)	Transit with no chief scientist.	GENAVIR BREST, Ifremer
TR_TLNDAK	<i>Le Suroît</i>	27 04 2013	08 05 2013	Mediterranean	Transit with no chief scientist.	GENAVIR BREST, Ifremer
TR_TLNDAK	<i>Antea</i>	08 02 2013	20 02 2013	North Atlantic Ocean	Transit with no chief scientist.	GENAVIR BREST, Ifremer
TR_TLNMAR	<i>Le Suroît</i>	25 02 2013	25 02 2013	Mediterranean	Transit with no chief scientist.	GENAVIR BREST, Ifremer
TUHAA PAE 2013	<i>Alis</i>	06 03 2013	10 04 2013	Pacific Ocean	DEBITUS Cécile	IRD PAPEETE CENTER, IRD
TV_BREST LASPALMAS1	<i>Beautemps-Beaupré</i>	23 09 2013	27 09 2013	Atlantic Ocean	IETA MATHIAS	SHOM - BREST CENTER, French Navy/SHOM
TV_BREST LASPALMAS2	<i>Beautemps-Beaupré</i>	28 09 2013	30 09 2013	Atlantic Ocean	IETA MATHIAS	SHOM - BREST CENTER, French Navy/SHOM
TV_BREST LISBONNE	<i>Pourquoi pas?</i>	28 04 2013	03 05 2013	North Atlantic Ocean	ICETA ROSADA Jean-Christophe	SHOM - BREST CENTER, French Navy/SHOM
TV_BREST STMALO	<i>Beautemps-Beaupré</i>	02 08 2013	03 08 2013	English Channel	IETA MATHIAS	SHOM - BREST CENTER, French Navy/SHOM
TV_BREST TENERIFE	<i>Beautemps-Beaupré</i>	23 02 2013	26 02 2013	North Atlantic Ocean	IPETA LEVIEUGE Daniel	SHOM - BREST CENTER, French Navy/SHOM
TV_DAKAR LASPALMAS	<i>Beautemps-Beaupré</i>	07 04 2013	13 04 2013	North Atlantic Ocean	IETA LE MOIGNE Pierre-Yves	SHOM - BREST CENTER, French Navy/SHOM
TVEOPS	<i>Pourquoi pas?</i>	20 09 2013	04 10 2013	NE Atlantic (40 W boundary)	SIMEONI Patrick	IFREMER TOULON CENTER, Ifremer
TV_FUNCHAL BORDEAUX	<i>Beautemps-Beaupré</i>	05 11 2013	09 11 2013	Atlantic Ocean	IETA MATHIAS	SHOM - BREST CENTER, French Navy/SHOM
TV_INFO	<i>Pourquoi pas?</i>	05 11 2013	14 11 2013	NE Atlantic (40 W boundary)	RUE Armel	NSE - VESSELS AND SHIPBOARD SYSTEMS, Ifremer

Cruise	Vessel	Start date	End date	Geographical area	Name of chief scientist	Chief scientist's laboratory
TV LASPALMAS BREST	<i>Beautemps-Beaupré</i>	20 06 2013	26 06 2013	North Atlantic Ocean	IETA LE MOIGNE Pierre-Yves	SHOM - BREST CENTER, French Navy/SHOM
TV LISBONNE VIGO 1	<i>Pourquoi pas?</i>	19 05 2013	03 06 2013	North Atlantic Ocean	ICETA ROSADA Jean-Christophe	SHOM - BREST CENTER, French Navy/SHOM
TV LISBONNE VIGO 2	<i>Pourquoi pas?</i>	20 05 2013	20 05 2013	North Atlantic Ocean	ICETA ROSADA Jean-Christophe	SHOM - BREST CENTER, French Navy/SHOM
TV MINDELO DAKAR	<i>Beautemps-Beaupré</i>	30 03 2013	01 04 2013	North Atlantic Ocean	IPETA LEVIEUGE Daniel	SHOM - BREST CENTER, French Navy/SHOM
TV MINDELO FUNCHAL	<i>Beautemps-Beaupré</i>	31 10 2013	02 11 2013	Atlantic Ocean	IETA MATHIAS	SHOM - BREST CENTER, French Navy/SHOM
TV STMALO BREST	<i>Beautemps-Beaupré</i>	21 08 2013	22 08 2013	English Channel	IETA MATHIAS	SHOM - BREST CENTER, French Navy/SHOM
TV VIGO PONTA	<i>Pourquoi pas?</i>	06 06 2013	07 06 2013	North Atlantic Ocean	ICETA ROSADA Jean-Christophe	SHOM - BREST CENTER, French Navy/SHOM
UPSEN 2013	<i>Antea</i>	21 02 2013	03 03 2013	NE Atlantic (40 W boundary)	CAPET Xavier	LOCEAN (OCEANOGRAPHY AND CLIMATE LABORATORY), UMR 7159, University of Paris VI - UPMC
VAD	<i>L'Europe</i>	27 11 2013	03 12 2013	Western Mediterranean Basin	HAMON Michel	OPS/LPO- OCEAN PHYSICS LABORATORY, Ifremer
VAHINE 1	<i>Alis</i>	09 01 2013	08 02 2013	Coral Sea	BONNET Sophie	MEDITERRANEAN INSTITUTE OF OCEANOGRAPHY (MIO) - LUMINY, University of the Mediterranean (U2)
VISUFRONT	<i>Téthys II</i>	18 07 2013	30 07 2013	Ligurian Sea	IRISSON Jean-Olivier	OCEANOLOGICAL OBSERVATORY OF VILLEFRANCHE SUR MER (OOV), UNIVERSITY OF PARIS VI
VT 123 / NIVMER13	<i>Marion Dufresne</i>	06 02 2013	13 03 2013	Antarctic Ocean	SCOUARNEC Lionel	CNRS/INSU TECHNICAL DIVISION FIELD OFFICE, CNRS
VT 124 / MYCTO	<i>Marion Dufresne</i>	06 02 2013	13 03 2013	Antarctic Ocean	JOSSE Erwan	MARINE ENVIRONMENTAL SCIENCES LABORATORY (LEMAR), CNRS
VT 125 / KEOPS2 MOOR	<i>Marion Dufresne</i>	06 02 2013	13 03 2013	Antarctic Ocean	GUENEUGUES Audrey	OCEANOLOGICAL OBSERVATORY OF BANYULS (OOB), UNIVERSITY OF PARIS VI
VT 126 / MDCPR	<i>Marion Dufresne</i>	06 02 2013	13 03 2013	Antarctic Ocean	KOUBBI Philippe	OCEANOGRAPHY LABORATORY OF VILLEFRANCHE (LOV), University of Paris VI - UPMC

Cruise	Vessel	Start date	End date	Geographical area	Name of chief scientist	Chief scientist's laboratory
VT 127 / OISO-22	<i>Marion Dufresne</i>	06 02 2013	13 03 2013	Antarctic Ocean	LO MONACO Claire	LOCEAN (OCEANOGRAPHY AND CLIMATE LABORATORY), UMR 7159, University of Paris VI - UPMC
VT 128 / OHA-SIS-BIO-5	<i>Marion Dufresne</i>	06 02 2013	13 03 2013	Antarctic Ocean	ROYER Jean-Yves	UMR 6538 CNRS "OCEAN DOMAINS" (LDO) - IUEM, University of western Brittany (UBO)
VT 129 / MAKER 2013/1061	<i>Marion Dufresne</i>	20 02 2013	20 02 2013	Antarctic Ocean	PARK Young-Hyang	PHYSICAL OCEANOGRAPHY LABORATORY, National museum of natural history
VT 132 / TRIMADU	<i>Marion Dufresne</i>	18 04 2013	14 05 2013	Atlantic Ocean	BAILLY DU BOIS Pascal	INSTITUTE FOR RADIOPROTECTION AND NUCLEAR SAFETY, CEA
VT 133 / MERIADZEC	<i>Marion Dufresne</i>	02 06 2013	08 06 2013	Bay of Biscay	WOERTHER Patrice	RDT - DPT TECHNOLOGICAL RESEARCH & DEVELOPMENT, Ifremer
VT 134 / MYCTO	<i>Marion Dufresne</i>	23 08 2013	25 09 2013	Indian Oean	JOSSE Erwan	MARINE ENVIRONMENTAL SCIENCES LABORATORY (LEMAR), CNRS
ZOSTERA-ACOUSTIQUE	<i>Haliotis</i>	27 08 2013	11 09 2013	Bay of Biscay	CORDIER Céline	DYNECO/BENTHOS- BENTHIC ECOLOGY LABORATORY, Ifremer
ZOSTERA-VIDEO	<i>Sepiola</i>	12 09 2013	13 09 2013	Bay of Biscay	CORDIER Céline	DYNECO/BENTHOS- BENTHIC ECOLOGY LABORATORY, Ifremer

8.2.4. List of cruises with no summary.

In 2013, 4 cruises could not be included in the marine cruise catalogue. No information or summary was received by SISMER for these cruises:

- FABLES (TETHYS II) – Chief scientist Françoise Sage
- SOGIR 13 (COTES DE LA MANCHE) – Chief scientist Aldo Sottolichio
- VT 130 / MERMAID (MARION DUFRESNE) – Chief scientist Guilhem Barruol
- VT 131 / AERONET (MARION DUFRESNE) – Chief scientist Guilhem Barruol

This means that none of the data acquired during these cruises can be accessed via the databases managed by SISMER until we receive the required information about the cruises.

9. Glossary

CNFC	National coastal fleet commission
CNFH	National ocean-going fleet commission
CNRS	National centre for scientific research
IOC	Intergovernmental Oceanographic Commission
CSR	Cruise Summary Report (formerly called ROSCOP)
EUROSEISMIC	European Marine Seismic Metadata and Information Centre
EXTRAPLAC	French Continental shelf extension program
GENAVIR	Research vessel management (IFREMER group)
IDM	IT and Marine Data Department
IEO	Spanish oceanography institute
IFREMER	French research institute for exploitation of the sea (formerly ISTPM-CNEXO)
INSU	National institute for sciences of the universe
IODE	International Oceanographic Data and Information Exchange
IPEV	Paul Emile Victor French polar institute
IRD	French research institute for cooperative development (formerly ORSTOM)
ISI	Information systems engineering
MEDAR	Mediterranean Data Archaeology and Rescue
MNHN	National museum of natural history
MFSTEP	Mediterranean Forecasting Toward Environmental Prediction
MTPII/MATER	Mediterranean Targeted Project II / MAss Transfer and Ecosystem Response
OFEG	Ocean Facilities Exchange Group
ROSCOP	Report of Observation/Samples Collected by Oceanographic Program
ROV	Remote Operated Vehicle
SHOM	French navy hydrographic and oceanographic service
SISMER	Marine scientific information systems
UNESCO	United Nations Educational, Scientific and Cultural Organization
JSU (UMS)	Joint service unit

10. Acknowledgements

SISMER thanks the chief scientists of the 2013 cruises, the authors of the cruise report summaries, and GENAVIR, Jean-Xavier CASTREC, SYLVIE VAN ISEGHEM & Olivier QUÉDEC (IFREMER/DMON/PF), Malika OUDIA (CNFC), Yves GOURIOU & Dominique LOPES (IRD), Hélène LEAU (IPEV) in charge of ship management. They have enabled us to disseminate this information and have thus contributed to enhancing the usability and value of the effort for measurements at sea.

11. Contacts

IFREMER / SISMER
Marine scientific information systems
Brest Center
BP 70 – 29280 Plouzané
France
Tel. (33)2 98 22 49 16
Fax (33)2 98 22 46 44
E-mail: csr_sismer@ifremer.fr
sismer@ifremer.fr
<http://www.ifremer.fr/sismer/>

Nolwenn DANIoux
IDM/SISMER
Tel. (33)2 98 22 44 04
E-mail: Nolwenn.Danioux@ifremer.fr

Published by IFREMER/IDM/SISMER
ISSN 1967-5542
@Copyright IFREMER