



Abrupt climate changes for Iceland during the last millennium: Evidence from high resolution sea ice reconstructions

Guillaume Massé^{a,*}, Steven J. Rowland^a, Marie-Alexandrine Sicre^b, Jeremy Jacob^c, Eystein Jansen^d, Simon T. Belt^a

^a Petroleum and Environmental Geochemistry Group, Centre for Chemical Sciences, School of Earth, Ocean and Environmental Sciences, University of Plymouth, Drake Circus, Plymouth, Devon, PL4 8AA, UK

^b Laboratoire des Sciences du Climat et de l'Environnement, Domaine du CNRS, Avenue de la Terrasse, Bat.12, 91198 Gif-sur-Yvette Cedex, France

^c Institut des Sciences de la Terre d'Orléans, UMR 6113, 45000 Orléans, France

^d Bjerknes Centre for Climate Research, Allegaten 55, Bergen 5007, Norway

ARTICLE INFO

Article history:

Received 6 December 2007

Received in revised form 8 February 2008

Accepted 3 March 2008

Available online 18 March 2008

Editor: H. Elderfield

Keywords:

highly branched isoprenoid alkenes
sea ice
Iceland
sediments

ABSTRACT

A high resolution account of Icelandic sea ice over the last millennium has been constructed using a novel proxy based on the presence in sediments of a biomarker (IP₂₅) produced by sea ice algae. Comparison with historical sea ice records demonstrates a strong correlation between documented sea ice occurrences and the IP₂₅ proxy. An excellent agreement is also observed between the IP₂₅ record and a diatom-based sea surface temperature reconstruction. Using this approach, we provide new historical sea ice data for periods where records are scarce or absent and evidence for abrupt changes to sea ice and/or climate conditions around Iceland during the Little Ice Age.

© 2008 Elsevier B.V. All rights reserved.

1. Introduction

Given the current debate regarding climate change on Earth and, in particular, the relative contributions of natural processes and anthropogenic inputs, it is crucial to obtain a clear and detailed account of past climatic variations and the factors controlling these (Jones et al., 2001). Polar sea ice, by its influence on the heat exchanges between the oceans and the atmosphere and its contributions to numerous oceanic processes (e.g. thermo-haline circulation) is a key component of the Earth's climate system (Thomas and Dieckmann, 2003). Therefore, improving our knowledge of historical sea ice fluctuations at a high spatial and temporal resolution will help to refine future climate change models and improve predictions. Very few documentary records for sea ice exist which pre-date the instrument era and these often include unreliable data (Bergthórsson, 1969; Ogilvie and Jónsson, 2001). Here, we report a detailed analysis of a sediment core (MD99-2275) collected from the North Icelandic Shelf (Fig. 1). This area is under the strong influence of three surface currents (Fig. 1). The warm and high salinity Irminger current is a branch of the North Atlantic drift, travelling along the western and the north western coasts of Iceland, while the East Greenland and the East Icelandic

currents bring cold and low salinity polar waters to the region. Any change in the relative strengths of these currents will influence the position of the oceanic Polar Front, and this is likely to be archived in the sediment record (Knudsen et al., 2004).

In this study, we have used the recently established sea ice proxy, IP₂₅ (Belt et al., 2007), which is based on the preservation in marine sediments of a unique chemical fossil produced by sea ice algae (Fig. 2), to obtain an uninterrupted, high resolution (ca. 2–5 yr) record of sea ice occurrences for the last millennium. The very high sedimentation rates associated with the core location, together with well documented occurrences of volcanic tephra (Eiriksson et al., 2004; Knudsen and Eiriksson, 2002; Larsen et al., 2002; Rousse et al., 2006) have enabled us to perform this study at an unprecedented sub-decadal resolution and to make comparisons with historical data documenting past sea ice extending back to the early days of Icelandic colonization (ca. 1080 BP). We demonstrate strong correlations between documented sea ice occurrences and the IP₂₅ proxy (Bergthórsson, 1969; Ogilvie and Jónsson, 2001) and reveal new sea ice data for periods where historical sources are scarce or absent. We have also compared our IP₂₅ data with diatom-based sea surface temperature reconstructions (Jiang et al., 2005; Eiriksson et al., 2006) to confirm that the Icelandic climate was relatively mild, and that little sea ice occurred in the region from 800 to 1300 AD, corresponding to the end of the Warm Mediaeval Period (MWP). In contrast, both reconstructed sea ice and sea surface

* Corresponding author. Tel.: +44 1752 233 032; fax: +44 1752 232 089.
E-mail address: gmasse@plymouth.ac.uk (G. Massé).

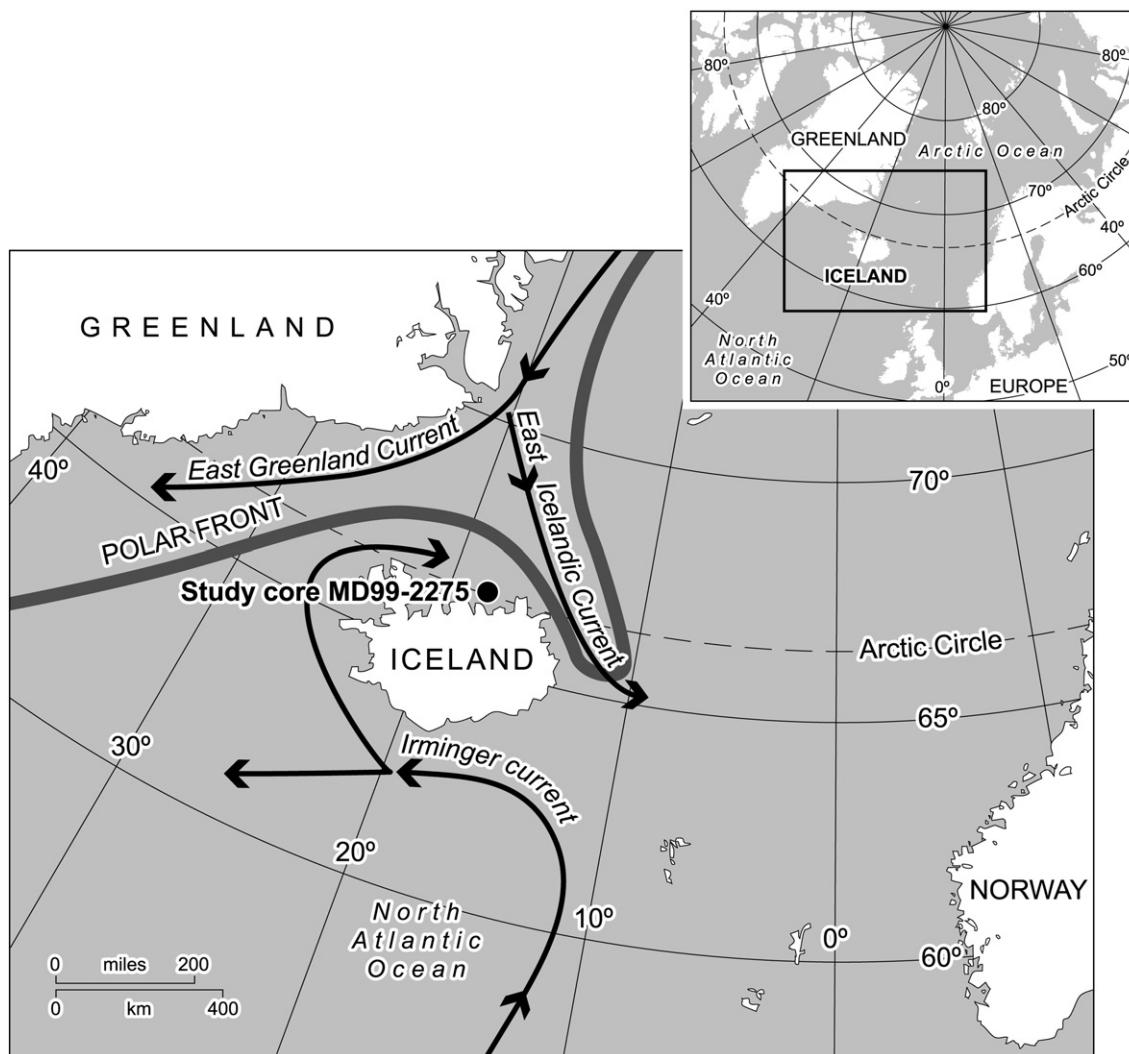


Fig. 1. Core location and oceanographic settings.

temperatures show that the climatic conditions around northern Iceland worsened during the second part of the millennium with cooler sea surface temperatures and larger amounts of sea ice. More detailed correlations exist throughout the record, and also provide evidence for a succession of abrupt climate changes in Iceland during the latter part of the record, corresponding to the Little Ice Age (LIA, 1300–1900 AD). Finally, our sea ice record also shows strong correlations with hemispheric-scale temperature reconstructions (Crowley, 2000; Mann et al., 1998), indicating that climatic conditions over Iceland were representative for at least the last millennium. This case study demonstrates that IP_{25} is a reliable proxy for historical sea ice reconstructions and could become an invaluable tool for high or ultra-high resolution studies of the Earth's climate system.

2. Methods

2.1. Sediment samples

The core MD99-2275 (66°33.06'N, 17°41.59'W; 410 m water depth) was collected during the R/V Marion Dufresne IMAGES V cruise in 1999. The age model of the entire core was determined using a combination of tephra marker horizons and thirty five radiocarbon dates (Eiriksson et al., 2004; Knudsen and Eiriksson, 2002; Larsen et al., 2002; Rouse et al., 2006). This age model was further constrained using 6 tephra layers corresponding to the time period

examined in the present study according to the method of Sicre et al. (2008).

2.2. IP_{25} analysis

The core was sampled continuously at 1 cm intervals (2–5 yr). Freeze-dried sediments were extracted using dichloromethane/methanol (50/50) to yield a total organic extract. Hydrocarbon fractions were obtained from this extract using open column chromatography (SiO_2 , hexane). An internal standard was added (7-hexylnonadecane, $0.1 \mu\text{g sample}^{-1}$) to permit quantification by GC-MS. IP_{25} was identified on the basis of comparisons between its GC retention index and mass spectrum

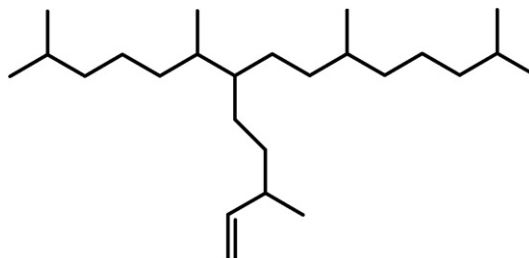


Fig. 2. Structure of IP_{25} proxy biomarker.

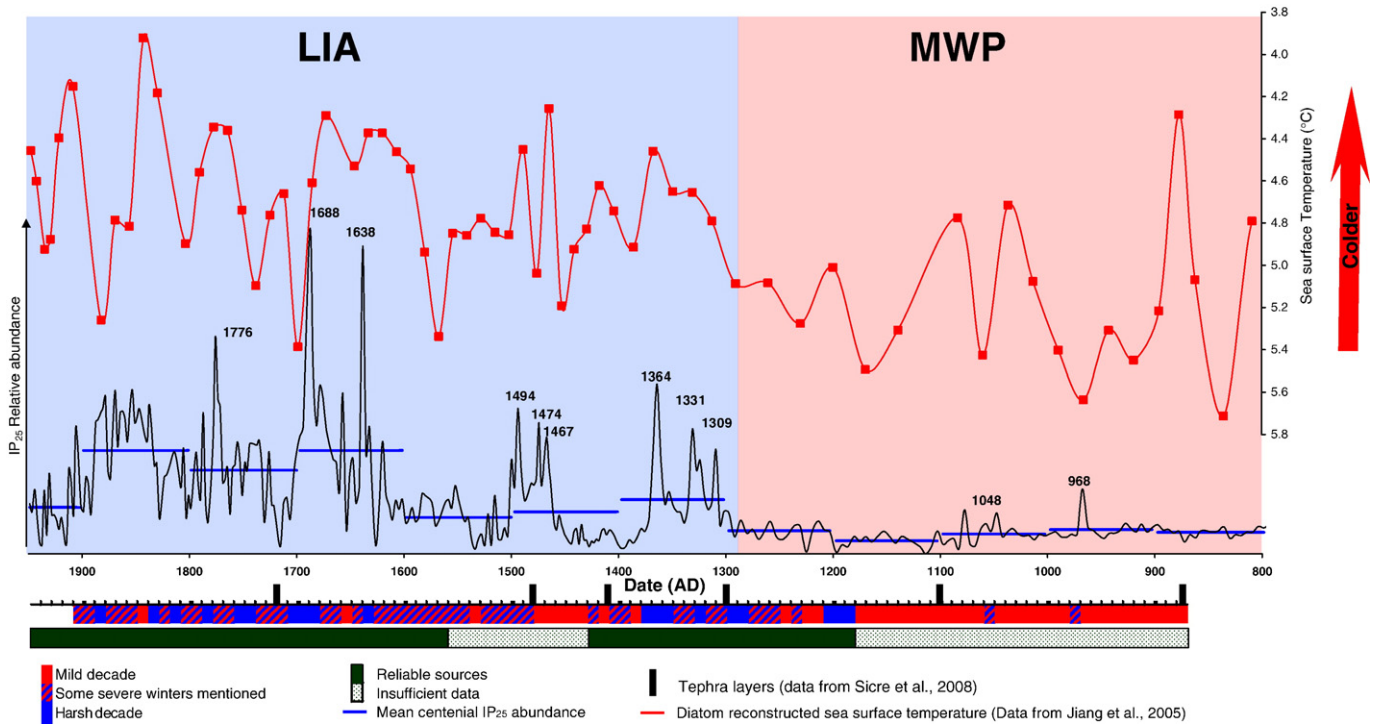


Fig. 3. Relative abundances of IP₂₅ found in the core MD99-2275 for the period 800–1950 AD plotted against historical records of Icelandic sea ice interpreted from Ogilvie (1992) and Ogilvie and Jónsson (2001) (bottom scales) and diatom-based reconstructed sea surface temperature (Jiang et al., 2005).

with an authentic standard (Belt et al., 2007). Relative abundances of IP₂₅ were calculated on the basis of the individual GC-MS responses for IP₂₅ and the internal standard, together with the mass of sediment analysed for each 1 cm interval.

2.3. Previous studies

2.3.1. Sea ice studies

There are a number of historical sources that document past sea ice occurrence around Iceland back to the early days of colonisation. These

sources have been carefully analysed and interpreted enabling qualitative sea ice indices (as indicated by the symbols and descriptors in Fig. 3) to be developed (Koch, 1945; Bergthórsson, 1969). Most recently, Ogilvie (1992) and Ogilvie and Jónsson (2001) examined the reliability of some of the original sources to further refine these indices.

2.3.2. Diatom-based sea surface temperature reconstructions

Recently, Jiang et al. (2005) and Eiriksson et al. (2006) reconstructed past sea surface temperatures around the North Icelandic Shelf using the relative abundances of diatom frustules in sediments

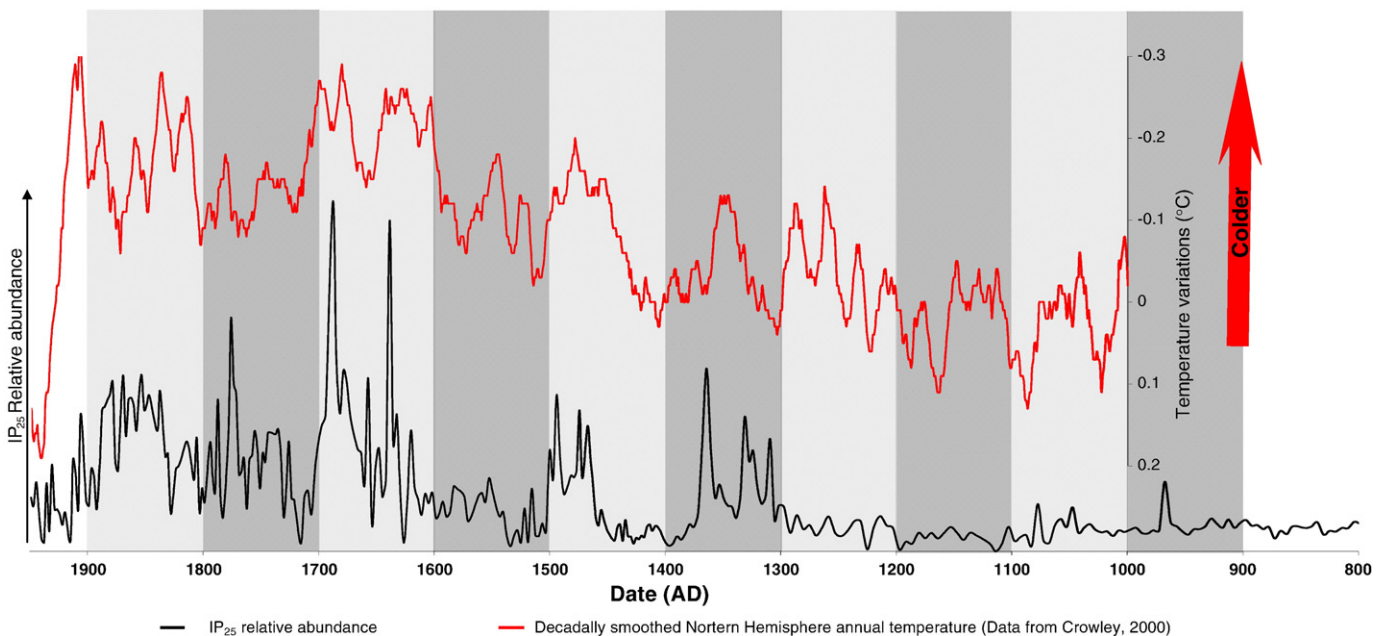


Fig. 4. Relative abundances of IP₂₅ found in the core MD99-2275 for the period 800–1950 AD plotted against reconstructed Northern Hemisphere annual temperatures (Crowley, 2000).

from the core MD99-2275. In the current study, we have used the Jiang et al. (2005) dataset which is available at: <ftp://rock.geosociety.org/pub/reposit/2005/2005010.pdf>.

2.4. Study site

For the current study, we chose a site location close to the north coast of Iceland since this region is strongly influenced by the boundaries of the cold and low-salinity waters of the East Icelandic Current and the warmer and higher salinity waters associated with the Irminger Current (Eiriksson et al., 2004; Knudsen and Eiriksson, 2002; Larsen et al., 2002; Rouse et al., 2006). As such, analysis of a sediment core from this region should provide an excellent case study for interrogating substantial and rapid changes to sea ice cover which, in turn, may reveal relationships to more global climatic forcing (e.g. the North Atlantic Oscillation) on relatively short timescales, for which there is little previous evidence.

3. Results and discussion

Palaeoclimate scientists continue to emphasise the importance of data derived from so-called proxy methods for climate reconstruction and that such data should have both high temporal and spatial resolution if it is to be valuable for both historical determinations and future climate prediction models (Mann et al., 1998; Jones et al., 1998, 2001). Such studies routinely rely on a multi-proxy approach since direct measures of climate conditions are either scarce, absent or unreliable. For example, a paucity of historical sea ice records has sometimes been interpreted as an indication of ice free conditions (Ogilvie and Jónsson, 2001) which is potentially misleading since poor records can also be attributed to abrupt changes to population resulting from famine and epidemics. In addition, proxy data usually reflects mean annual or multi-annual temperatures rather than seasonally sensitive phenomena such as sea ice. Recently, we reported a new proxy for Arctic sea ice, IP₂₅, which is a mono-unsaturated highly branched isoprenoid (HBI) alkene biosynthesised by sea-ice diatoms (Belt et al., 2007; Fig. 2). HBI alkenes are commonly occurring chemicals found in a wide range of marine sediments (Rowland and Robson, 1990). However, Rowland and co-workers (2001) showed that the extent of HBI unsaturation reflected the growth temperature of the diatoms responsible for their production, with more saturated isomers being formed at low temperatures. Consistent with these observations, IP₂₅ is a mono-unsaturated HBI alkene only found in sea ice and related sediments and is therefore considered as a specific biomarker of sea ice (Belt et al., 2007).

Fig. 3 shows a continuous record of the relative abundance of IP₂₅ for the top (ca. 300 cm) of the MD99-2275 sediment core. These results, when compared with climatic data from previous studies (Ogilvie, 1992; Crowley and Lowery, 2000; Jones et al., 2001; Ogilvie and Jónsson, 2001; Knudsen et al., 2004; Eiriksson et al., 2006; Jiang et al., 2005) show a series of excellent correlations (Figs. 3 and 4). Firstly, averaged centennial-scale abundances of IP₂₅ are entirely consistent with previous estimations of the Little Ice Age (LIA), the Mediaeval Warm Period (MWP) and relative centennial temperatures (Jones et al., 2001; Ogilvie and Jónsson, 2001). For example, centennial-scale IP₂₅ abundances are highest for the 19th and 17th centuries (Fig. 3) in-line with the conclusions of Crowley (2000), Jones et al. (1998, 2001) and Mann et al. (1998) that these were the coldest centuries of the last millennium in the northern hemisphere. In contrast, IP₂₅ abundances are substantially reduced during the 18th and 16th centuries as well as for the first half of the millennium (Fig. 3) due to lower sea ice occurrences associated with warmer conditions (Jones et al., 1998, 2001; Mann et al., 1998). At a higher temporal resolution, 1690–1700 is considered to be the coldest decade for the 17th century in the northern hemisphere (Jones et al., 1998; Crowley and Lowery, 2000) including Iceland (Ogilvie and Jónsson, 2001), and this is reflected by the highest abundance of

the IP₂₅ biomarker in the MD99-2275 sediment core over the past 1000 years (Figs. 3 and 4).

IP₂₅ is also abundant in sediments dated 1776, 1638, 1364, 1331 and 1309 corresponding to decades where large amounts of sea ice have been reported around Iceland (Ogilvie and Jónsson, 2001). In addition, these dates correspond to cold decades as shown by both the diatom-based sea surface temperatures (Fig. 3; Jiang et al., 2005) and the mean northern hemisphere temperatures (Fig. 4; Crowley and Lowery, 2000). For the 19th century, Ogilvie and Jónsson described a highly variable climate with a succession of cold and mild decades. IP₂₅ abundances are similarly variable during this period with the highest abundances of IP₂₅ observed in the more recent sediments, in agreement with the historical data describing the latter part of the 19th century as the coldest.

The current IP₂₅ data also provide additional sea ice information for periods where the historical sources are limited or unreliable. For example, very little data about Icelandic climate is available for periods corresponding to the earliest days of Iceland colonisation (ca. 870) to the end of the 13th century and from 1430 to 1560 (Ogilvie and Jónsson, 2001) and it is often assumed that the climate of Iceland was favourable during these periods. However, the frequent incidence of dramatic reductions in population due to documented famine and epidemics during these times, which may themselves be attributed in part to severe climatic conditions, could equally account for absences in climatic records (Ogilvie and Jónsson, 2001). The epoch immediately following the first colonisation period corresponds to the end of the MWP and therefore little or no sea ice might be predicted for this time. Consistent with this hypothesis, IP₂₅ abundances are indeed low with mean values for 800–1300 lower than the subsequent 700 years (Fig. 3). This is also in agreement with diatom-based sea surface temperature reconstructions and northern hemisphere temperature profiles, both of which show warmer temperatures during this time (Figs. 3 and 4). Significantly, however, higher abundances of IP₂₅ are observed for the few years when severe weather was reported including 1048 and 968 (Bergthórsson, 1969; Ogilvie and Jónsson, 2001; Fig. 3). IP₂₅ abundances are also low between 1400 and 1460 and during the 16th century, consistent with reports of a mild climate (Ogilvie and Jónsson, 2001) and the diatom-based temperature record (Fig. 3). However, our data shows dramatic differences for the mid-late 15th century, where there are abrupt increases in the abundance of IP₂₅ (particularly 1494, 1474 and 1467), reflecting enhanced sea ice occurrences due to more severe conditions during this period, with the centennial mean close to that of the preceding 14th century, for which reliable historical records suggest several severe decades (Ogilvie and Jónsson, 2001). Thus, despite a paucity of historical climate records for the 1430–1560 era, we provide compelling evidence for substantial changes in climate during this time including a 40–50-year period of extensive sea ice cover. Interestingly, these rapid and dramatic changes in the abundance of IP₂₅ during the mid-late 15th century are also consistent with substantial oscillations observed in the diatom-based temperature record (Fig. 3). Additional abrupt and coincident changes in both the IP₂₅ abundances and sea surface temperatures are observed during the 14th, 17th and 18th centuries (e.g. 1364, 1638, 1688 and 1776) confirming that a number of substantial climate changes occurred in Iceland during the LIA.

As such, the high resolution and continuous dataset achieved in this study has enabled several abrupt changes to sea ice conditions to be determined for which there have been little or no precedent from previous decadal (or longer timescale) determinations (Fig. 3). Since debates continue as to what extent epochs such as the LIA and MWP can be classified in both temporal and spatial terms, our sea ice dataset illustrates that, for north Iceland (at least), substantial, abrupt and highly frequent changes to climate conditions are confirmed to have taken place within the well accepted centennial scale trends derived

previously. Not only will such data enhance the quality of climate prediction models but, for locations where there is the additional impact on past human populations, a more accurate account of climate-induced control over human activity should become achievable.

4. Conclusion

This first application of a novel sea ice proxy has involved a comparison between the abundances of a sea ice derived biomarker found in an Icelandic sediment core with historical sea ice records, diatom-based sea surface temperatures and mean northern hemisphere temperatures. For the last millennium, we demonstrate a significant set of correlations between the abundance of the IP₂₅ biomarker and at least one (and often two or all three) of these other climatic measures. As such, we have been able to make cross comparisons with other proxy methods and validate existing historical sea ice records. In addition, the cross correlation approach using IP₂₅ abundances and other proxies has yielded new historical sea ice data for periods where records are scarce or absent and, in addition, has provided more convincing evidence for abrupt changes to sea ice and/or climate conditions, especially during the Little Ice Age. IP₂₅ will likely provide an invaluable tool for future palaeoclimatic studies for regions where historical data are absent and periods before written records began.

Acknowledgements

This work was supported by the UK Natural Environment Research Council (NE/D013216/1; NE/E00752X/1). This is a contribution to the European Union 5th Framework project PACLIVA (Contract No. ECK2-CT-2002-00143). This is LSCE contribution number 2435.

References

- Belt, S.T., Massé, G., Poulin, M., LeBlanc, B., Michel, C., Rowland, S., 2007. A novel chemical fossil of palaeo sea ice: IP₂₅. *Org. Geochem.* 38, 16–27.
- Bergthórsson, P., 1969. An estimate of drift ice and temperature in Iceland in 1000 years. *Jökull* 19, 94–101.
- Crowley, T.J., 2000. Causes of climate change over the past 1000 years. *Science* 289, 270–277.
- Crowley, T.J., Lowery, T.S., 2000. Northern hemisphere temperature reconstruction. *Ambio* 29, 51–54.
- Eiriksson, J., Larsen, G., Knudsen, K.L., Heinemeier, J., Simonarson, L.A., 2004. Marine reservoir age variability and water mass distribution in the Iceland sea. *Quat. Sci. Rev.* 23, 2247–2268.
- Eiriksson, J., Bartels-Jonsdóttir, H.B., Cage, A.G., Gudmundsdóttir, E.R., Klitgaard-Kistensen, D., Marret, F., Rodrigues, T., Abrantes, F., Austin, W.E.N., Jiang, H., Knudsen, K.L., Sejrup, H.P., 2006. Variability of the North Atlantic current during the last 2000 years based on shelf bottom water and sea surface temperatures along an open ocean/shallow marine transect in western Europe. *The Holocene* 16, 1017–1019.
- Jiang, H., Eiriksson, J., Schultz, M., Knudsen, K.L., Seidenkrantz, M.S., 2005. Evidence for solar forcing of sea surface temperature on the North Icelandic Shelf during the late Holocene. *Geology* 33, 73–76.
- Jones, P.D., Briffa, K.R., Barnett, T.P., Tett, S.F.B., 1998. High-resolution palaeoclimatic records for the last millennium: interpretation, integration and comparison with General Circulation Model control-run temperatures. *The Holocene* 8, 455–471.
- Jones, P.D., Osborn, T.J., Briffa, K.R., 2001. The evolution of the climate over the last millennium. *Science* 292, 662–667.
- Knudsen, K.L., Eiriksson, J., 2002. Application of tephrochronology to the timing and correlation of palaeoceanographic events recorded in Holocene and late Glacial shelf sediments off North Iceland. *Mar. Geol.* 191, 165–188.
- Knudsen, K.L., Eiriksson, J., Jansen, E., Jiang, H., Rytter, F., Gudmundsdóttir, E.R., 2004. Palaeoceanographic changes off North Iceland through the last 1200 years: foraminifera, stable isotopes, diatoms and ice rafted debris. *Quat. Sci. Rev.* 23, 2231–2246.
- Koch, L., 1945. The East Greenland ice, in: Kommissionen for videnskabelige Undersøgelser i Grønland (Ed.), *Meddelelser om Grønland*, Copenhagen.
- Larsen, G., Eiriksson, J., Knudsen, K.L., 2002. Correlation of late Holocene terrestrial and marine tephra markers, North Iceland: Implication for reservoir age changes. *Polar Res.* 21, 283–290.
- Mann, M.E., Bradley, R.S., Hughes, M.K., 1998. Global-scale temperature patterns and climate forcing over the past six centuries. *Nature* 392, 779–787.
- Ogilvie, A.E.J., 1992. Documentary evidence for changes in the climate of Iceland AD 1500 to 1800. In: Bradley, R.S., Jones, P.D. (Eds.), *Climate since AD 1500*, London and New York, pp. 92–117.
- Ogilvie, A.E.J., Jónsson, T., 2001. “Little ice Age” research: a perspective from Iceland. *Clim. Change* 48, 9–52.
- Rousse, S., Kissel, C., Laj, C., Eiriksson, J., Knudsen, K.L., 2006. Holocene centennial to millennial-scale climatic variability: evidence from high-resolution magnetic analyses of the last 10 cal kyr of North Iceland (core MD99-2275). *Earth Planet. Sci. Lett.* 242, 390–405.
- Rowland, S.J., Robson, J.N., 1990. The widespread occurrence of highly branched acyclic C₂₀, C₂₅ and C₃₀ hydrocarbons in recent sediments and biota – a review. *Mar. Environ. Res.* 30, 191–216.
- Rowland, S.J., Belt, S.T., Wraige, E.J., Massé, G., Roussakis, C., Robert, J.-M., 2001. Effects of temperature on polyunsaturation in cytotstatic lipids of *Haslea ostrearia*. *Phytochemistry* 56, 597–602.
- Sicre, M.-A., Jacob, J., Ezat, U., Rousse, S., Kissel, K., Eiriksson, J., Knudsen, K.-L., Jansen, E., Turon, J.L., 2008. Decadal variability of sea surface temperatures off North Iceland over the last 200 yrs. *Earth Planet. Sci. Lett.* 268, 137–142.
- Thomas, D.N., Dieckmann, G.S., 2003. *Sea-Ice: An Introduction to its Physics, Chemistry, Biology and Geology*. Blackwell, p. Oxford.