


# 2014

## French oceanographic cruises report







<b>1</b>	<b><i>Those involved</i></b> .....	<b>4</b>
1.1	French oceanographic fleet JSU Joint Service Unit and assessment commissions.....	4
1.2	Sismer .....	5
<b>2</b>	<b><i>Oceanographic cruises</i></b> .....	<b>7</b>
2.1	Définition .....	7
2.2	Cruises inventory .....	7
2.3	Chief scientists' rules and duties .....	7
2.4	Transmission of summaries .....	7
<b>3</b>	<b><i>Access to cruises and data</i></b> .....	<b>8</b>
<b>4</b>	<b><i>Cruises report</i></b> .....	<b>10</b>
4.1	Background.....	10
4.2	Year 2014.....	11
4.2.1	Breakdown of cruises by managing organization .....	12
4.2.2	Breakdown of cruises by client organization .....	12
4.3	<b>Cruises by vessel</b> .....	<b>12</b>
4.3.1	Cruises referenced at SISMER .....	13
4.3.1.1	Cruises by Alis .....	13
4.3.1.2	Cruises by Antea .....	15
4.3.1.3	Cruises by Beautemps-Beaupré .....	17
4.3.1.4	Cruises by Côtes de la Manche.....	19
4.3.1.5	Cruises by Gwen Drez .....	21
4.3.1.6	Cruises by Haliotis .....	23
4.3.1.7	Cruises by La Curieuse .....	25
4.3.1.8	Cruises by L'Astrolabe .....	27
4.3.1.9	Cruises by L'Atalante .....	29
4.3.1.10	Cruises by Le Suroit .....	31
4.3.1.11	Cruises by L'Europe .....	33
4.3.1.12	Cruises by Marion Dufresne .....	35
4.3.1.13	Cruises by Néréis II .....	37
4.3.1.14	Cruises by Pourquoi pas? .....	39
4.3.1.15	Cruises by Téthys II .....	41
4.3.1.16	Cruises by Thalassa.....	43
4.3.1.17	Cruises by Thalia .....	45
4.3.2	Cruises not referenced at SISMER (station vessels) .....	48
4.4	<b>Cruises list</b> .....	<b>49</b>
<b>5</b>	<b><i>Contacts</i></b> .....	<b>62</b>
<b>6</b>	<b><i>Acronymes</i></b> .....	<b>63</b>



## Introduction

This document reports on the French oceanographic cruises conducted in 2014. It was drawn up by IFREMER, and more specifically by the SISMER (French acronym for marine scientific information systems) department which is in charge of managing cruise data.

It provides a detailed description of the role of the various players managing French ocean-going facilities and of the means to archive cruise information and oceanographic data. It presents the fleet's activity in 2014 and provides dynamic access to cruise information through the web portal CALLED Nautilus: [http://www.ifremer.fr/sismer/index\\_UK.htm](http://www.ifremer.fr/sismer/index_UK.htm).

The electronic version of this document is available at the following address: <http://dx.doi.org/10.13155/38208>.

Clicking on the hypertext links gives direct access to the cruise descriptions.

Previous years' reports for French oceanographic cruises are also available via the Archimer website IFREMER'S INSTITUTIONAL archive, at: <http://archimer.ifremer.fr/index.jsp?la=en>.

SISMER's thanks go to:

- ✓ the chief scientists of 2014 cruises,
- ✓ GENAVIR,
- ✓ Jean-Xavier Castrec and Sylvie Van Iseghem (IFREMER/DMON/PF),
- ✓ Yves Gouriou and Dominique Lopes (IRD),
- ✓ H  l  ne L  au and Val  rie Hadoux (IPEV),
- ✓ Malika Oudia and Pascal Morin (CNFC), and
- ✓ Viviane Bout-Roumazeilles (CNFH).

They have enabled us to collect information required for this report, in particular, and to contribute to increasing the value of efforts to collect measurements at sea.

# 1 Those involved

The main French ocean research vessels are managed by the following organizations:

- **CNRS/INSU** (French national scientific research center / national institute for sciences of the universe),
- **IFREMER** (French research institute for exploitation of the sea),
- **IPEV** (French polar institute – Paul Emile Victor),
- **IRD** (French research institute for cooperative development, formerly ORSTOM),
- **FRENCH NAVY/SHOM** (French Navy's hydrographic and oceanographic service).

The first 4 organisations are working together in the Fleet Joint Service Unit (UMS FLOTTE in French) in order to pool sea-going resources (vessels and vehicles) more efficiently and effectively and be able to rely on assessment commissions.

The French scientific community also has access to other European vessels through the OFEG (Ocean Facilities Exchange Group) which IFREMER belongs to. OFEG coordinates ship time exchanges between the fleets of the United Kingdom, Germany, Spain, the Netherlands, Norway and France.

Finally, SISMER ensures that the data related to these cruises are permanently stored.

## 1.1 FRENCH OCEANOGRAPHIC FLEET JSU JOINT SERVICE UNIT AND ASSESSMENT COMMISSIONS

Since 2008, the French sea-going facilities for oceanographic research from CNRS, IFREMER, IPEV and IRD have made up the French oceanographic fleet major research infrastructure (FOF MRI).

A significant step was made for integration of French ocean-going resources in March 2011, when the French oceanographic fleet joint service unit (JSU) - was created, initially for a 4 year period.

The JSU's assigned objective is to improve the management of the French ocean research fleet, shared by the four operators up until then.

Setting up this Joint Service Unit with unified governance should give the public authorities an overarching view of this Major Research Infrastructure (MRI) in the framework of supervising public policies and clear the way for a comprehensive strategic vision which is currently lacking.

To meet this objective, **three missions** have been defined:

- develop integrated scheduling of vessels and large-scale equipment,
- prepare and coordinate a plan for the fleet's evolution, and
- coordinate investment policies.

On the FLEET JSU WEBSITE (<http://www.flotteoceanographique.fr/>) are descriptions and activity of all vessels and vehicles of all JSU members, cruise schedules and information about cruise applications and cruises conducted.

In terms of scheduling for seagoing facilities, the FLEET JSU relies, amongst other things, on the assessments made by two commissions following the national call for ocean-going and coastal cruises:

- the **national ocean-going fleet commission (CNFH)**, for cruise projects requiring ocean research vessels from the French offshore oceanographic fleet.
- the **national coastal fleet commission (CNFH)**, for cruise projects requiring ocean research vessels from the French inshore oceanographic fleet.

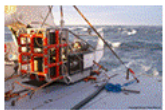
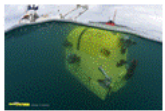
The role of these commissions is also to:

- assess, a posteriori, the results from coastal oceanographic cruises performed using French oceanographic resources; and

– respond to requests from the Scientific and strategic orientations committee (COSS) to take part in drawing up advice concerning the sea-going resources for oceanographic research.

The diagram below shows how the cruise process functions, from application to achievement.

## The scheduling process



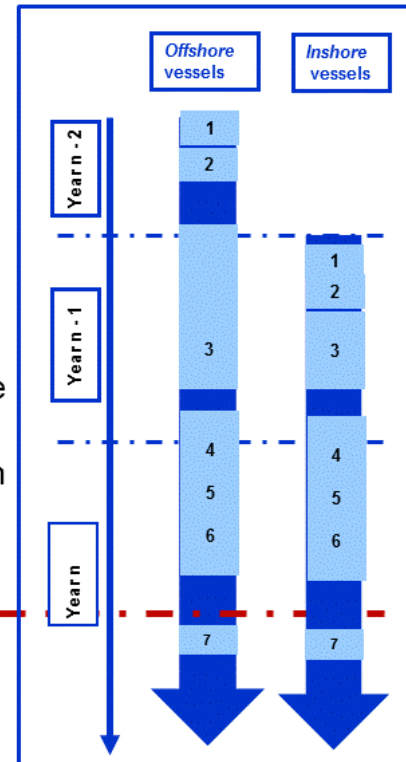
### Steps of the process:

1. *Call for tender*
2. *Evaluation by CNFC – CNFH*
3. JSU fleet scheduling

If cruise is scheduled

4. Chief scientist informed about the various regulations
5. Request filed for studies in foreign waters
6. Preparation of the cruise
7. Cruise report

*Cruise is conducted*



### 1.2 SISMER


It has been proved that without permanent archiving, done following well established standards, 30% of data acquired is lost by the end of 10 years. The cost of using facilities for data acquisition at sea is so high that it is essential to implement the resources and means necessary for good data preservation.

SISMER is an IFREMER department located at its Brittany center. It is part of the IDM (marine information systems and data) unit of the IMN department of Marine and Digital Infrastructure.

It is France's national coordinator for international data exchanges in the framework of the "International Oceanographic Data and Information Exchange" (IODE) programme of UNESCO's Intergovernmental Oceanographic Commission (IOC).

To meet the needs of the scientific community, it works with the ISI (Information systems engineering) service in the IDM (IT and marine data) department to develop and use marine-related information systems and databases. The service manages and archives the data collected during French oceanographic cruises and keeps an inventory of them. It also manages real-time data from various operational oceanographic systems (Coriolis database).

SISMER manages the French national oceanographic database, which under very specific rules protects, standardizes and disseminates, data from various fields of marine science, like hydrology, marine biochemistry, currentometry, gravimetry, magnetometry, seismics, bathymetry, acoustic imaging, physical-



chemical seabed characteristics and the deep sea environment. The data can also come from French research laboratories taking part in surveys at sea.

Sismer archives the data, along with information about its source, the experimental conditions and collection methodology (metadata). It applies quality control in accordance with international standards and distributes the data and metadata using standardized formats.

It makes an active contribution to French, European and international working groups devoted to standardization and exchange of data. It coordinates the SeaDataNet pan-European marine data center network, whose aim is to link the main European oceanographic data centers and thus give users access on line to distributed databases through a single portal.

No information on surveys or cruises classified as "confidential defence" is held in SISMER's vessel database. However, in order to keep a lasting record for other confidential cruises (commercial contracts, surveys made under contract, etc.), the data are archived but not distributed.

**Data which is incorrectly or not archived will ultimately be lost for good.**

**Cruise data which is incorrectly referenced (CSR sheet incorrectly or not completed) cannot be accessed and are therefore ultimately lost.**

**The value, in both scientific and financial terms, of data acquired at sea represents a legacy which must be preserved.**

## 2 Oceanographic cruises

### 2.1 DEFINITION

An "oceanographic cruise" is a set of days during which a vessel acquired observational data. This can be outings of one day (station vessels), several days (inshore vessels) or several weeks (offshore vessels).

"French cruise" means a cruise for which the home organization of the client (chief scientist) - or of the contracting authority - is French.

Any cruise classified « Confidential Defence » or considered as such is not listed in this document. Those cruises are taken into account for the historical report, but are not counted in the yearly report.

### 2.2 CRUISES INVENTORY

Taking inventory of cruises is done in several steps:

- Using the scheduled ocean cruise programs. This is done with the help of the people in charge of ship management;

- At the end of each cruise, the chief scientists are requested to send a description of their cruise to SISMER. The summary can be completed directly on line (<http://forms.ifremer.fr/sismer/csr/>).

A template (called a CSR - Cruise Summary Report sheet) is available on the SISMER website, found here: [http://www.ifremer.fr/sismer/FR/catal/campagne/Fiche\\_CSR\\_FR.htm](http://www.ifremer.fr/sismer/FR/catal/campagne/Fiche_CSR_FR.htm) or, for vessels from the JSU, in [Compte-rendu de la campagne](#) made available on the FLEET JSU website.

This action is carried out in compliance with the procedure followed aboard all JSU vessels (<http://www.flotteoceanographique.fr/Campagnes-scientifiques>) and with the 'Vade-Mecum for inshore oceanographic vessel users' guide for INSU and IFREMER (<http://cir.dt.insu.cnrs.fr/docfiches.html>).

- The information thus gathered is then archived in the SISMER database. Each cruise is given a track number (single identifier).

### 2.3 CHIEF SCIENTISTS' RULES AND DUTIES

In keeping with the protocol in effect, once the cruise has been accepted, it is compulsory for the chief scientist to become informed about a number of regulations and to inform all members of the scientific team who will embark about them. These texts especially deal with: the [rights and obligations in terms of archiving and disseminating data](#), acquired aboard vessels, and the [role the chief scientist is expected to play](#) on board the vessel.

The process for carrying out cruises and the related documents for [offshore](#) and [inshore](#) cruises can be found on line on the FLEET JSU website.

### 2.4 TRANSMISSION OF SUMMARIES

In the framework of the European SeaDataNet - pan-European Infrastructure for marine and ocean data management (<http://www.seadatanet.org/>), the cruise summaries are sent to BSH/DOD (German data center) which ensures that the European CSR are disseminated worldwide, particularly to ICES/CIEM (International Council for the Exploration of the Sea).



### 3 Access to cruises and data

The full inventory of *oceanographic cruises* in the French database and *their related data* contains information covering almost a century of measurements taken at sea.

It can be accessed at the following URL:

[http://www.ifremer.fr/sismer/index\\_UK.htm](http://www.ifremer.fr/sismer/index_UK.htm) by clicking "Access data" then "Sea cruises" to go to the cruises or "In-situ data" to access the data.

IFREMER

Access data  
French Databases  
Projects  
About SISMER  
Quality assurance  
Links  
Products

IDM/SISMER  
Centre IFREMER de Brest  
BP 70  
29280 PLOUZANE ( France )  
Tel : + 33 (0)2 98 22 49 16  
Fax : + 33 (0)2 98 22 46 44  
Email : [sismer@ifremer.fr](mailto:sismer@ifremer.fr)

FTP anonymous : <ftp.ifremer.fr>

WELCOME TO NAUTILUS PORTAL  
the french national oceanographic data center

Copyr. News Contrib


This portal provides cartographic and interactive consultation and search functions for cruise data. It also enables data to be retrieved or ordered on line using the form on the server, depending on the degree of confidential and the file size (500 Mb) permitting.

French research cruises and their data are incorporated in the SeaDataNet project's European catalogues (<http://www.seadatanet.org/>). Information about the cruises can be found at: [http://seadata.bsh.de/csr/retrieve/sdn2\\_index.html](http://seadata.bsh.de/csr/retrieve/sdn2_index.html), and their data is on the SeaDataNet website at [http://seadatanet.maris2.nl/v\\_cdi\\_v3/search.asp](http://seadatanet.maris2.nl/v_cdi_v3/search.asp).

An accessible database on POGO's international server at <http://www.pogo-oceancruises.org/> gives the scheduled cruises of research vessels over 60 m LOA for a dozen countries.

Along with the cruise inventory, data from various fields of ocean research are also archived. They include marine physics, chemistry, biology, geology and geophysics, as well as exploratory fisheries and technology.

SISMER archives and disseminates part of the data collected aboard French research vessels - primarily those of FLEET JSU vessels - and observation systems.



The data are transmitted following one of the following patterns:

**Sent directly to SISMER at the end of the mission:**

- Raw data acquired using French facilities managed by IFREMER (major facilities),
- Single- and multi-beam bathymetric data,
- Gravimetry data,
- Magnetometry data
- Seismic reflection data,
- Sonar imaging data (sidescan sonars, multibeam echo sounders),
- Navigational data,
- Shipboard ADCP data from RV *L'Atalante*, *Thalassa*, *Le Suroît*, *Beautemps-Beaupré*, *Pourquoi Pas ?*,
- Data from underwater vehicles,
- Fisheries data.

**Data requiring laboratory processing:**

These data are transmitted once measurements have been validated or samples analyzed:

- Marine physical and biochemical data collected at hydrological stations (CTD and bottle casts);
- Eulerian or Lagrangian time series (currentometry, temperature, deep-sea tide gauges),
- Geological samples and analyses.

**Data transmitted in real time:**

When the ship is so equipped, data can be sent directly in real time for the needs of modeling experts in the framework of operational oceanographic projects:

- CTD and XBT from some cruises,
- Shipboard ADCP from the vessels *Beautemps-Beaupré* and *Pourquoi Pas?*.

**Data compilations:**

SISMER manages and distributes archives of data and data compilation products: theme-based databases, digital terrain models (MNT), maps and atlases which are created in partnership with other scientific centers and laboratories, in the framework of French, European and international programs:

The Sextant portal (marine and coastal geographical data infrastructures) provides a catalogue of baseline reference data related to the marine environment:

<http://sextant.ifremer.fr/en/?jsessionid=1B41F855D32D2E11E2CD57C9C7993D05>

## 4 Cruises report

As time goes by, the cruise database is enriched with new data. Sometimes we also recover information about older cruises, particularly when a link to a bibliography or to data is requested.

### 4.1 BACKGROUND

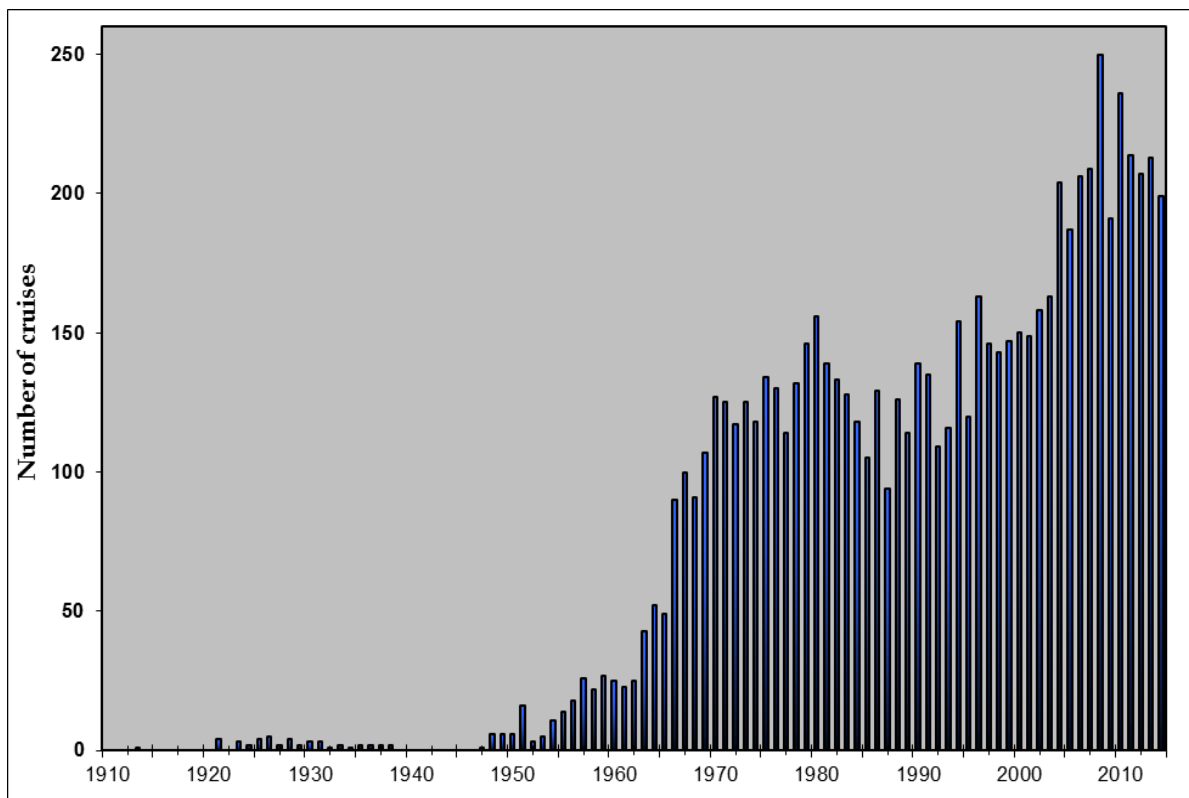
In all, SISMER has catalogued 7,683 French oceanographic cruises (broadly speaking, without any confidentiality criteria) since 1913, including:

- ✓ 6,617 cruises (strictly speaking),
- ✓ 648 simple or piggyback transits,
- ✓ 316 sea-trial or shake-down cruises,
- ✓ 48 service provisions,
- ✓ 54 other cruises.

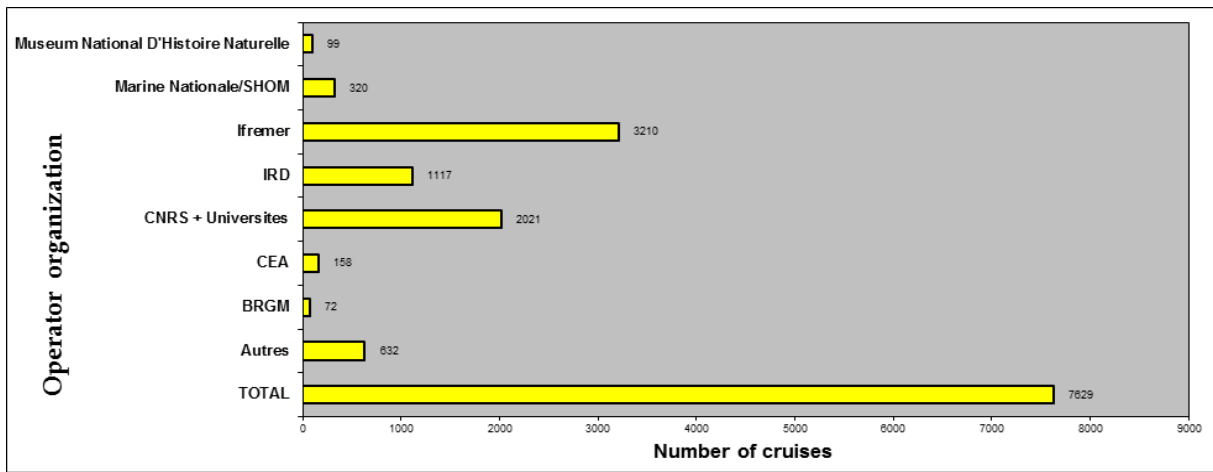
Only 7,629 cruises (not including these "other cruises") are covered in this report's statistics.

In the past, cruises were generally conducted by the former Scientific and technical fisheries institute (ISTPM) and by the French Navy's hydrographic and oceanographic service (FRENCH NAVY/SHOM). Later, other organizations like the CNRS, IRD (formerly ORSTOM), IPEV (formerly IFRTP), the National museum of natural history (MNHN), CNEXO (National center for exploitation of the oceans) and then IFREMER (created by merging ISTPM-CNEXO) greatly contributed to the efforts to collect measurements at sea, using their own facilities. Currently, the growing number of European projects and international programs for ship time sharing mean that a number of French cruises are made aboard foreign vessels.

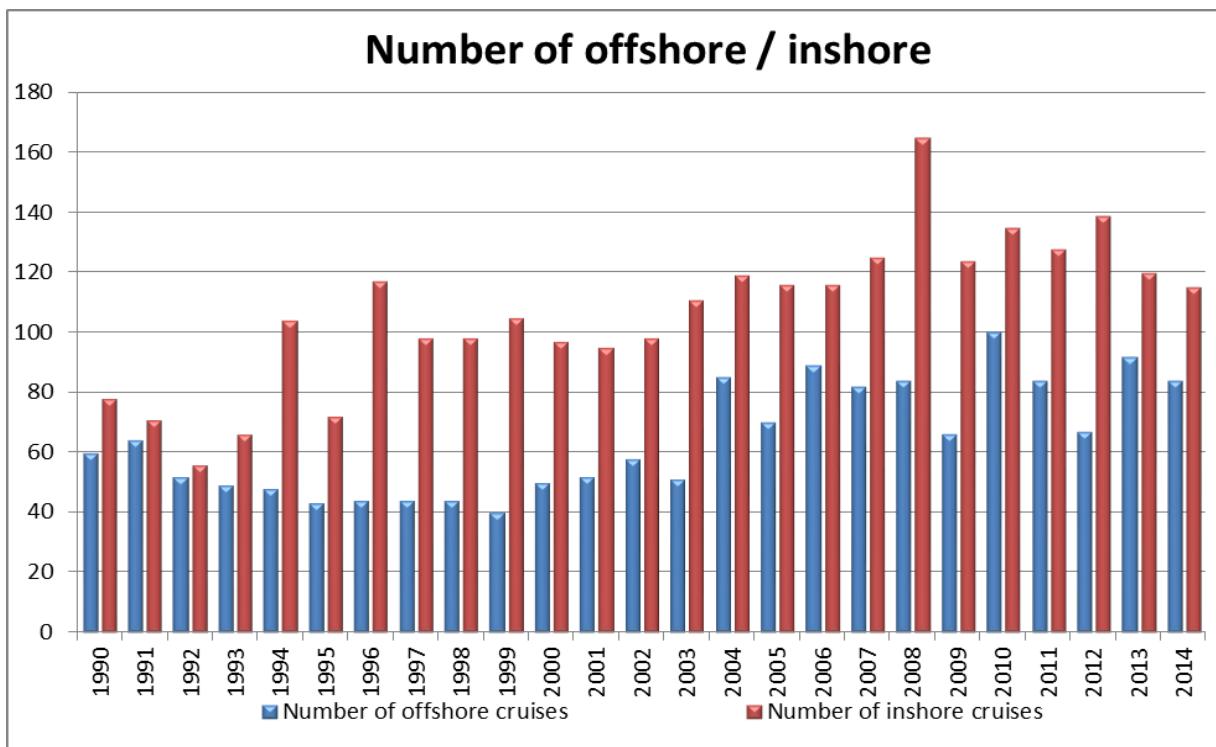
The 7,629 French cruises (including ocean research cruises, simple transit and piggyback missions, sea trial cruises and commercial service provision) can be broken down over time, since 1913, as follows:



The main client organizations (usually the organization which the chief scientist belongs to) for these cruises were:



The graph below shows trends for offshore (ship >= 50 m LOA) and inshore (ship <= 50 m LOA) cruises over the past 25 years.



The number of both ocean-going and inshore cruises has been growing over these 25 years. However, this seems to have stabilized over the past ten years or so at around 120 cruises per year for inshore vessels or those belonging to stations and 80 cruises per year for offshore vessels.

#### 4.2 YEAR 2014

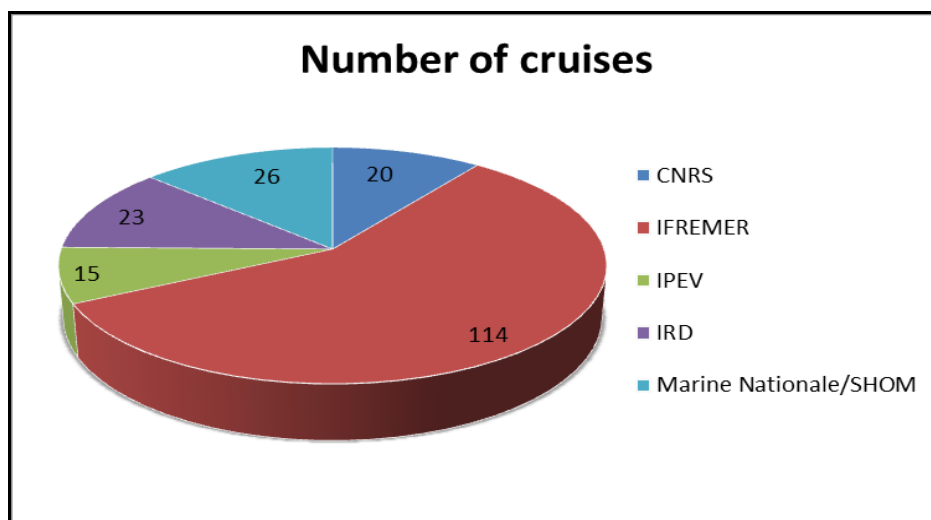
In 2014, 198 French cruises (oceanographic, trials, transits and commercial service performance, not classified as "Confidential") were recorded at SISMER for offshore and inshore vessels.

This is not entirely representative of the French fleet, since there were also cruises conducted on station vessels, but a report could not be drawn up on them for last year. However, the schedules for these vessels can be accessed on line:

<http://www.flotteoceanographique.fr/Calendriers-des-campagnes/Calendriers-navires-de-station>

#### 4.2.1 Breakdown of cruises by managing organization

The managing organization is the shipowner.



#### 4.2.2 Breakdown of cruises by client organization

The client organization is the contracting authority requesting the cruise (generally represented by the 1<sup>st</sup> chief scientist).

Chief scientist's organization	Number of cruises
CNRS+UNIVERSITIES	44
IPEV	2
IRD	11
Ifremer	103
French Navy/SHOM	29
BRGM	1
CEA	2
National museum of natural history	3
Various private-sector organizations	1
Ministry of ecology and sustainable development	1
Secretariat general of the Pacific community	1
<b>TOTAL</b>	<b>198</b>

As regards the chief scientists, the same main organizations are present each year. Other organizations appear on a more occasional basis.

### 4.3 CRUISES BY VESSEL

This report presents the activity of vessels in the French fleet as comprehensively as possible. Some of the cruises have been referenced at Simer, meaning that their chief scientist sent us their data at the end of the cruise by filling out the CSR sheet. Steps are being taken to try and obtain the same outcome for station boats, but some time is still needed to achieve this.

#### 4.3.1 Cruises referenced at SISMER

The 198 cruises in 2014 were carried out aboard 7 offshore ocean research vessels, 9 inshore oceanographic vessels, 1 station boats and 2 underwater vehicles (NAUTILE and ROV VICTOR 6000). The WEBSITE of the JSU <http://www.flotteoceanographique.fr/La-flotte/Navires> provides a detailed description of the fleet within this grouping.

The 2014 cruises are presented below, listed by vessel and indicating spatial location and time period. A full list of cruises in alphabetical order and for all vessels is also provided at the end of the document.

##### 4.3.1.1 Cruises by *Alis*

RV *Alis* is a 28.50 m trawler operating in the South-West Pacific Ocean from French Polynesia to Papua-New Guinea. The vessel is based in New Caledonia. It is operated by IRD.

It performs oceanographic missions for physics (umbilical cable, shipboard ADCP, etc.), biology (trawling, ER 60 4 frequency echo-sounder, scanmar sensor, etc.) and bathymetrics (EM1002 multibeam echo-sounder). It is also used as a support ship for diving missions (studying biodiversity, etc.).

Here are its main characteristics:



**Coastal vessel**  
**NODC code: 35AY**  
**Call sign: FHQB**  
**Length 28**  
**Crew: 12**  
**Scientists: 6**

For more details: <http://www.flotteoceanographique.fr/La-flotte/Navires/Navires-hauturiers/Alis>

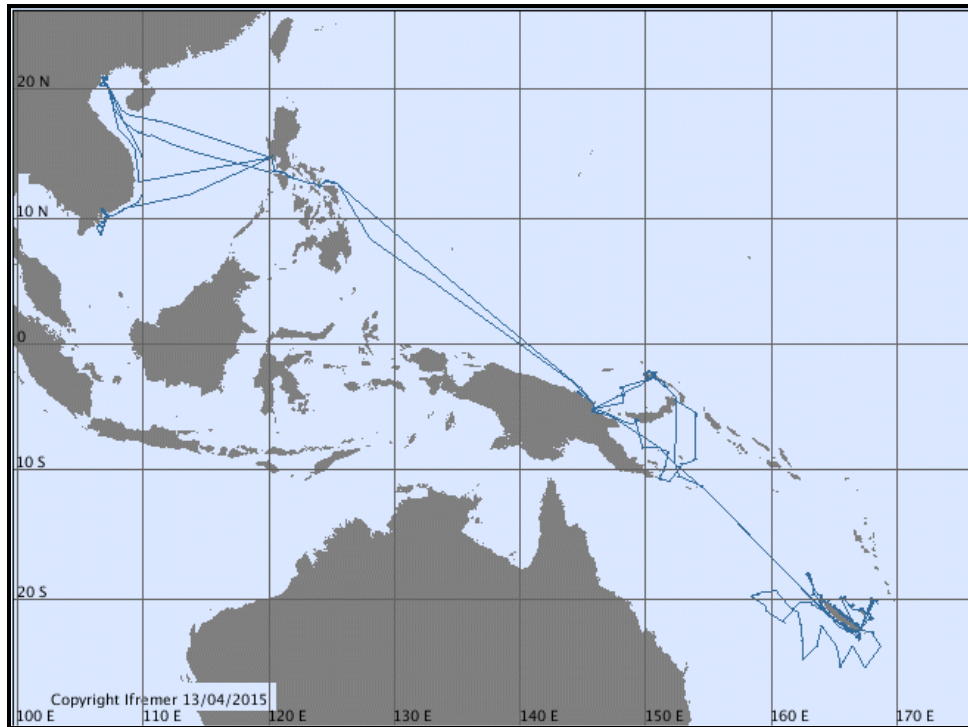


Figure 1 — Tracks of 18 cruises and legs in transit by *Alis* in 2014

**APEX**

JUHEL Jean-Baptiste  
 VIGLIOLA Laurent  
 Du 30/01/14 au 13/02/14

**BIBELOT**

FAUVELOT Cécile  
 Du 14/02/14 au 28/02/14

**SPOT2014-LEG1 (06)**

RODIER Martine  
 Du 03/03/14 au 06/03/14

**CALIOPE 02**

DUPOUY Cécile  
 Du 07/03/14 au 22/03/14

**TR\_NMAMAD (Transit)**

Du 23/03/14 au 04/04/14

**MADEEP**

CORBARI Laure  
 SAMADI Sarah  
 OLU Karine  
 Du 05/04/14 au 09/05/14

**TR\_MADHAP (Transit)**

Du 11/05/14 au 26/05/14

**TR\_HAPSUB (Transit)**

Du 26/05/14 au 05/06/14

**TR\_SUBHOC (Transit)**

Du 06/06/14 au 19/06/14

**VITEL-SOUTH**

OUILLOON Sylvain  
 Du 19/06/14 au 27/06/14

**TR\_HOCHAP (Transit)**

Du 28/06/14 au 03/07/14

**VITEL-NORTH**

OUILLOON Sylvain  
 Du 05/07/14 au 15/07/14

**TR\_HAPKAV (Transit)**

Du 15/07/14 au 08/08/14

**KAVIENG**

PAYRI Claude  
 Du 08/08/14 au 07/09/14

**PRISTINE 3**

VIGLIOLA Laurent  
 Du 22/09/14 au 09/10/14

**SPOT07 FISHBOX**

BIEGALA Isabelle  
 Du 11/10/14 au 21/10/14

**NECTALIS-3**

ALLAIN Valérie  
 MENKES Christophe  
 Du 20/11/14 au 08/12/14

**SPOT2014-LEG2 (08)**

DUPOUY Cécile  
 Du 10/12/14 au 16/12/14

#### 4.3.1.2 Cruises by *Antea*

RV *Antea* is a 35 m-long catamaran operating in the Atlantic and Indian Oceans. The vessel is based in France. It is operated by IRD.

It performs oceanographic missions for physics (umbilical cable, shipboard ADCP, etc.) and biology (trawling, ER 60 4 frequency echo-sounder, scanmar sensor, etc.). It is also used as a support ship for diving missions (studying biodiversity, etc.).



Here are its main characteristics:

**Coastal vessel**  
**NODC code: 35A8**  
**Call sign: FNUR**  
**Length 35**  
**Crew: 12**  
**Scientists: 10**

For more details: <http://www.flotteoceanographique.fr/La-flotte/Navires/Navires-hauturiers/Antea>



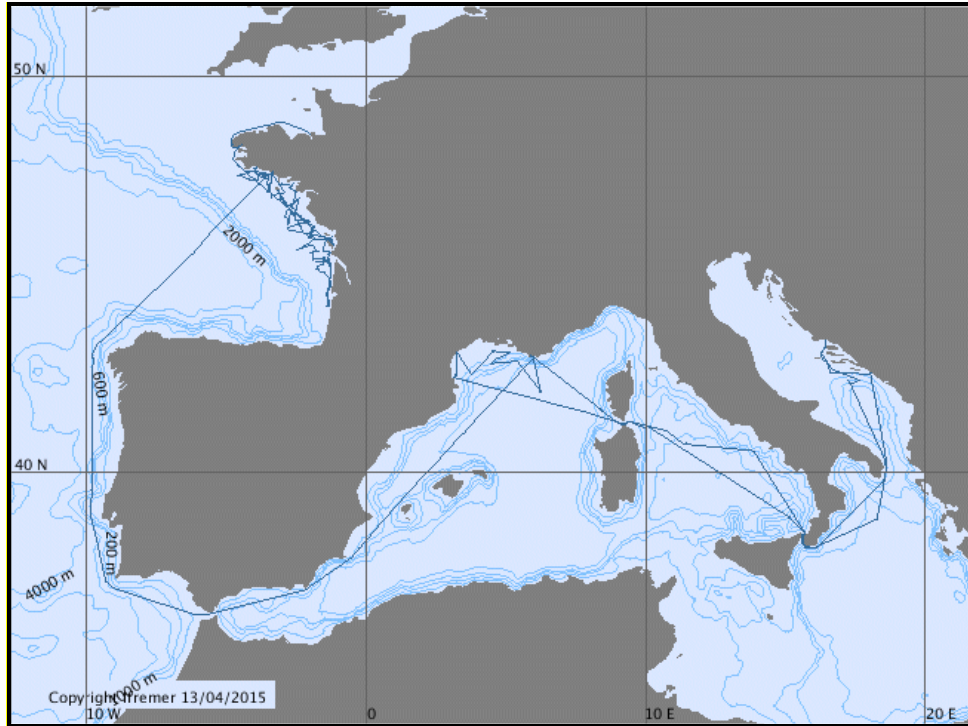


Figure 2 — Tracks of 5 cruises and legs in transit by *Antea* in 2014

**PERSMED 2**

TRONCZYNSKI Jacek  
Du 01/04/14 au 26/04/14

**TR\_SEYLOR (Transit)**

Du 15/09/14 au 21/09/14

**ESSTECH**

TREDUNIT Gilles  
Du 03/11/14 au 04/11/14

**ORHAGO 14**

COUPEAU Yann  
Du 05/11/14 au 25/11/14

**TR\_BRESMA (Transit)**

Du 02/12/14 au 07/12/14

#### 4.3.1.3 Cruises by *Beautemps-Beaupré*

The hydrographic / oceanographic survey vessel *Beautemps-Beaupré* carries out both **military missions** and **general hydrographic survey work** on behalf of the French Navy's hydrographic and oceanographic service (SHOM).



Here are its main characteristics:

**Ocean-going vessel**  
**NODC code: 35B5**  
**Call sign: FABB**  
**Length 80**  
**Crew: 26**  
**Scientists: 25**

For more details: <http://www.flotteoceanographique.fr/La-flotte/Navires/Navires-hauturiers/Antea>

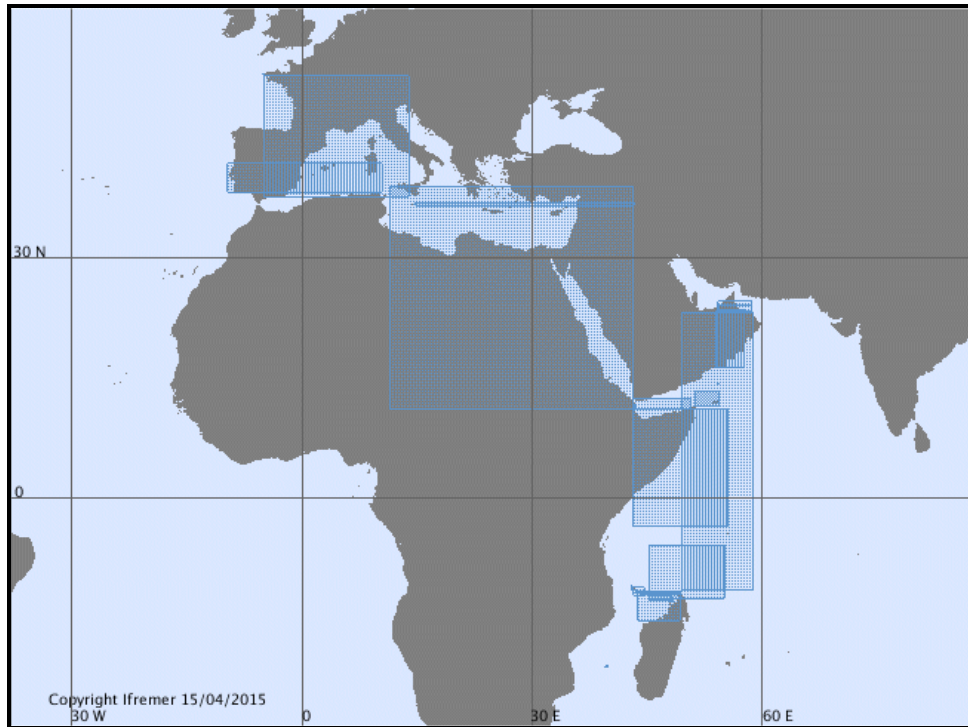


Figure 3 — Tracks of 26 cruises and transits by *Beautemps-Beaupré* in 2014

**FROMVEUR**

IETA LE MOIGNE Pierre-Yves  
Du 21/01/14 au 21/01/14

**TV\_BREST\_MALTE**

IETA LE MOIGNE Pierre-Yves  
Du 27/01/14 au 03/02/14

**TV\_MALTE\_DJIBOUTI**

IETA LE MOIGNE Pierre-Yves  
Du 07/02/14 au 14/02/14

**DJIBOUTI\_LEG1**

IETA LE MOIGNE Pierre-Yves  
Du 17/02/14 au 18/02/14

**DJIBOUTI\_LEG2**

IETA LE MOIGNE Pierre-Yves  
Du 23/02/14 au 24/02/14

**TV\_DJIBOUTI\_SALALAH**

IETA LE MOIGNE Pierre-Yves  
Du 24/02/14 au 26/02/14

**SOCADEN**

IETA LE MOIGNE Pierre-Yves  
Du 26/02/14 au 03/03/14

**PHYSINDIEN1\_LEG1**

IETA LE MOIGNE Pierre-Yves  
Du 03/03/14 au 04/03/14

**PHYSINDIEN1\_LEG2**

IETA LE MOIGNE Pierre-Yves  
Du 07/03/14 au 18/03/14

**PHYSINDIEN1\_LEG3**

IETA LE MOIGNE Pierre-Yves  
Du 21/03/14 au 25/03/14

**PHYSINDIEN2**

IETA MATHIAS  
Du 21/05/14 au 02/06/14

**TV\_MASCATE\_DIEGO-SUAREZ**

IETA MATHIAS  
Du 05/06/14 au 15/06/14

**TV\_DIEGO-**

**SUAREZ\_HELLVILLE**

IETA MATHIAS  
Du 20/06/14 au 30/06/14

**NOSYBE\_DIEGO\_HELLVILLE**

IETA MATHIAS  
Du 21/06/14 au 02/07/14

**BASSAS\_DA\_INDIA**

IETA MATHIAS  
Du 24/06/14 au 28/06/14

**NOSYBE\_HELLVILLE\_DZAOUD  
ZI**

IETA MATHIAS  
Du 07/07/14 au 12/07/14

**TV\_HELLVILLE\_DZAOUDZI**

IETA MATHIAS  
Du 12/07/14 au 13/07/14

**TV\_DZAOUDZI\_MORONI**

IETA GAUMET  
Du 02/08/14 au 03/08/14

**COMORES\_LEG1**

IETA GAUMET  
Du 03/08/14 au 12/08/14

**COMORES\_LEG2**

IETA GAUMET  
Du 16/08/14 au 17/08/14

**TV\_MORONI\_ANTSIRANANA**

IETA GAUMET  
Du 28/08/14 au 30/08/14

**TV\_ANTSIRANANA\_LONGONI**

IETA GAUMET  
Du 02/09/14 au 04/09/14

**TV\_LONGONI\_MAHE**

IETA GAUMET  
Du 04/10/14 au 08/10/14

**TV\_MAHE\_DJIBOUTI**

IETA GAUMET  
Du 13/10/14 au 21/10/14

**TV\_DJIBOUTI\_TUNIS**

IETA GAUMET  
Du 24/10/14 au 04/11/14

**TV\_TUNIS\_BREST**

IETA GAUMET  
Du 08/11/14 au 13/11/14

#### 4.3.1.4 Cruises by *Côtes de la Manche*

This oceanographic vessel performs scientific research missions, mainly in the Atlantic Channel area. It can conduct missions lasting about ten days, at distances reaching 200 nautical miles from harbour. This inshore vessel is fitted with instruments and meets the needs of researchers in the fields of marine geosciences, physical and biological oceanography, biogeochemistry and ocean chemistry. It also contributes to long-term marine environmental observation missions and to research and trials missions in various marine technology fields. The vessel can also carry out teaching missions for graduate and post-graduate university levels.

Here are its main characteristics:



**Coastal vessel**  
**NODC code: 35C4**  
**Call sign: FQBE**  
**Length 25**  
**Crew: 7**  
**Scientists: 8**

For more details: <http://www.flotteoceanographique.fr/La-flotte/Navires/Navires-cotiers/Cotes-de-la-Manche>

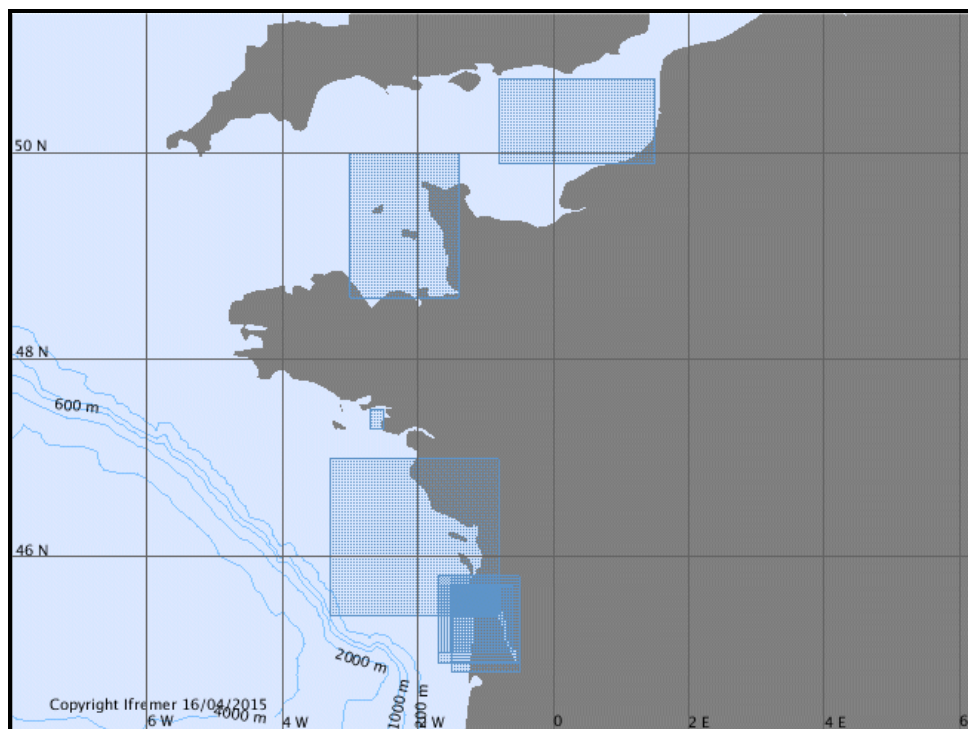


Figure 4 — Tracks of 8 cruises by *Côtes de la Manche* in 2014

**SOGIR 14**

DERRIENNIC Hervé  
SOTTOLICHIO Aldo  
Du 20/01/14 au 21/11/14

**CARMOLIT 2014 LEG1**

QUEMENER Loïc  
Du 26/02/14 au 27/02/14

**COLOR-CAMPAIGNS LEG1**

LAFON Virginie  
LUBAC Bertrand  
Du 20/03/14 au 25/03/14

**SYRRE**

PROUST Jean-Noël  
THINON Isabelle  
Du 07/05/14 au 17/05/14

**TRACES**

LAGUIONIE Philippe  
BAILLY DU BOIS Pascal  
Du 21/05/14 au 31/05/14

**TREMOR**

GAULLIER Virginie  
Du 01/06/14 au 15/06/14

**COLOR-CAMPAIGNS LEG2**

LUBAC Bertrand  
LAFON Virginie  
Du 13/07/14 au 18/07/14

**HALOGIR**

LABADIE Pierre  
Du 03/09/14 au 08/09/14

#### 4.3.1.5 Cruises by *Gwen Drez*

The oceanographic research vessel *Gwen Drez* is a 24.50 metre trawler working in the English Channel and on the continental shelf of the Bay of Biscay. It was built in 1976 in Cherbourg by CMN shipyards, and then bought by Ifremer in 1984 to be converted into a research vessel. It is operated by GÉNAVIR.

It is mainly used for fisheries research missions and also takes part in coastal environmental surveys.



Here are its main characteristics:

**Coastal vessel**  
**NODC code: 35GD**  
**Call sign: FZYB**  
**Length 25**  
**Crew: 7**  
**Scientists: 5**

For more details: <http://www.flotteoceanographique.fr/La-flotte/Navires/Navires-cotiers/Gwen-Drez>

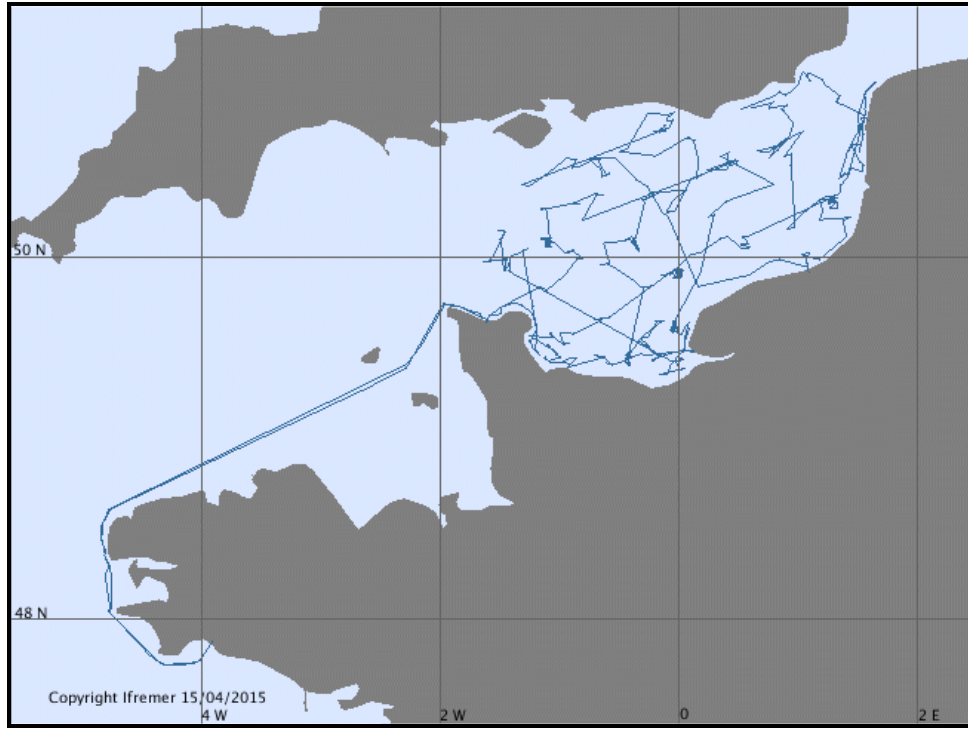


Figure 5 — Tracks of 3 cruises and leg in transit by *Gwen Drez* in 2014

**TR\_CONCHE** (Transit)  
Du 28/09/14 au 01/10/14

**CGFS2014**  
GOASCOZ Nicolas  
Du 01/10/14 au 31/10/14

**TR\_CHECON** (Transit)  
Du 01/11/14 au 02/11/14

#### 4.3.1.6 Cruises by *Haliotis*

The oceanographic launch *Haliotis* provides a mapping platform, based first and foremost on acoustic imaging making it possible to obtain accurate and reliable information about the nature and the morphology of the very shallow coastal fringe. Genavir has been entrusted with managing the vessel.



Here are its main characteristics:

**Coastal vessel**  
**NODC code: 35HL**  
**Call sign: FGF5958**  
**Length 10**  
**Crew: 2**  
**Scientists: 1**

For more details: <http://www.flotteoceanographique.fr/La-flotte/Navires/Navires-cotiers/Haliotis>



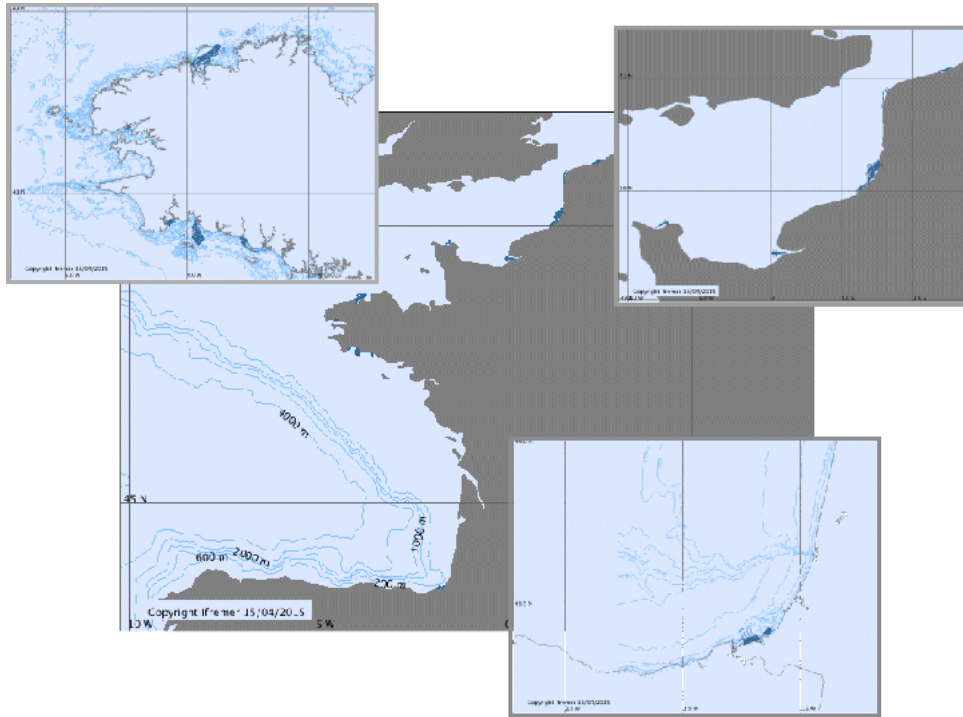


Figure 6 — Tracks of 11 cruises by *Haliotis* in 2014

**ESSTECH\_14HA**

BISQUAY Hervé  
Du 18/02/14 au 19/02/14

**ESTUSOM 2014 - LEG1**

LE BOT Sophie  
MICHEL Charlotte  
Du 29/03/14 au 11/04/14

**POCK&TIDE**

BALTZER Agnès  
EHRHOLD Axel  
Du 14/04/14 au 01/05/14

**GEOMELOINE**

EHRHOLD Axel  
Du 03/05/14 au 24/05/14

**FISSEL 2014**

HENAFF Alain  
Du 25/05/14 au 13/06/14

**SPLASHALIOT-01**

MAILLET Grégoire  
Du 18/06/14 au 24/06/14

**SEDBUSCH\_NORMANDIE**

MARION Claire  
TESSIER Bernadette  
Du 30/06/14 au 22/07/14

**BIEROC - LA MONDREE**

CLIQUET Dominique  
SIMPLET Laure  
Du 07/08/14 au 16/08/14

**SEDBUSCH\_NORD**

TRENTESAUX Alain  
HEQUETTE Arnaud  
Du 22/08/14 au 03/09/14

**SPLASHALIOT-02**

MAILLET Grégoire  
Du 06/09/14 au 14/09/14

**ESTUSOM 2014 - LEG2**

MICHEL Charlotte  
LE BOT Sophie  
Du 16/09/14 au 28/09/14

#### 4.3.1.7 Cruises by *La Curieuse*

La Curieuse is a "stern trawler" type vessel of 25 metres LOA, and is made available to IPEV 2 to 3 months per year by IOE (*Indian Ocean Exploration*). It provides the local logistics services for land-based scientific programs in the [Kerguelen](#) archipelago. It has special equipment and fittings which also enable it to implement coastal oceanography programs in marine biology, ichthyology, hydrography, marine mapping, hydrology, etc. It can also deploy various fishing gear (trawl and trammel net).



Here are its main characteristics:

**Coastal vessel**  
**NODC code: 35UC**  
**Call sign: FGAK**  
**Length 26**  
**Crew: 6**  
**Scientists: 12**

**Owned by TAAF - Managed by IPEV**

For more details: [http://www.institut-polaire.fr/ipev/bases\\_et\\_navires/la\\_curieuse](http://www.institut-polaire.fr/ipev/bases_et_navires/la_curieuse)

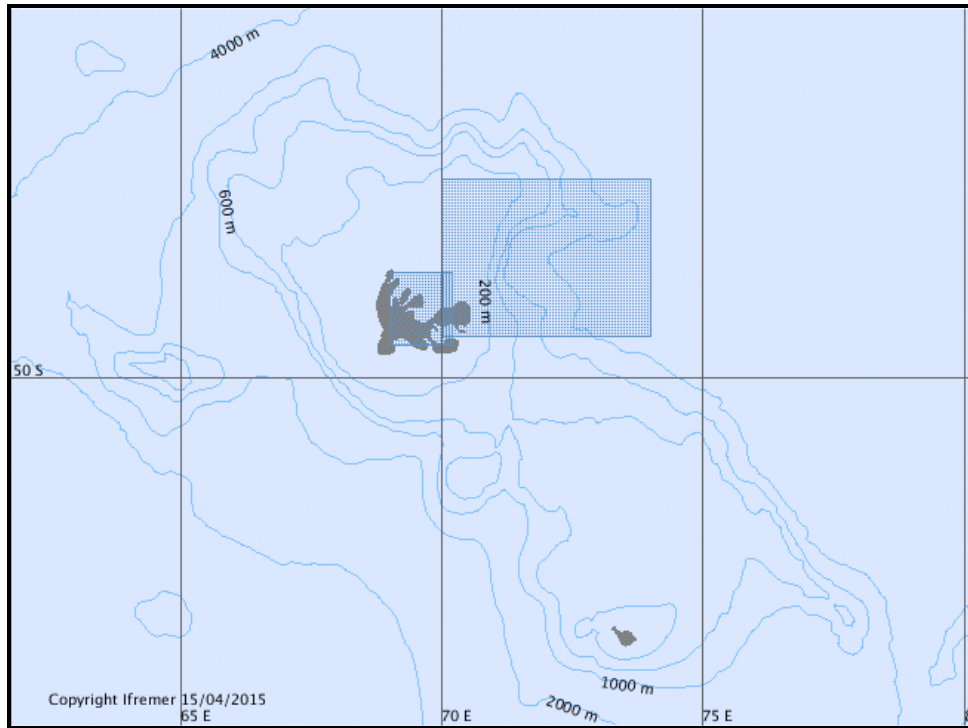


Figure 7 — Tracks of 2 cruises by *La Curieuse* in 2014

**PROTEKER 3**  
FERAL Jean-Pierre  
Du 01/12/14 au 14/12/14

**MAKER 2014/1061**  
PARK Young-Hyang  
Du 14/12/14 au 16/12/14

#### 4.3.1.8 Cruises by *L'Astrolabe*

*L'Astrolabe* is a 65 m-long "ice strengthened" supply ship serving the Dumont d'Urville base in Adélie Land. It can embark 49 passengers and several hundred tonnes of food supplies, fuel and equipment. Each year, it is used by IPEV for 120 days, regularly ensuring 5 return trips (*November to March*) over a distance of 2,700 km between Tasmania and the Antarctic continent.

*L'Astrolabe* is also used for coastal oceanographic surveys of short duration in the Antarctic.



Here are its main characteristics:

**Ocean-going vessel**  
**NODC code: 35AC**  
**Call sign: FHZI**  
**Length 65**  
**Crew: 12**  
**Scientists: 48**

**Co-owned by TAAF / IPEV - Managed by IPEV**

For more details: [http://www.institut-polaire.fr/ipev/bases\\_et\\_navires/l\\_astrolabe](http://www.institut-polaire.fr/ipev/bases_et_navires/l_astrolabe)

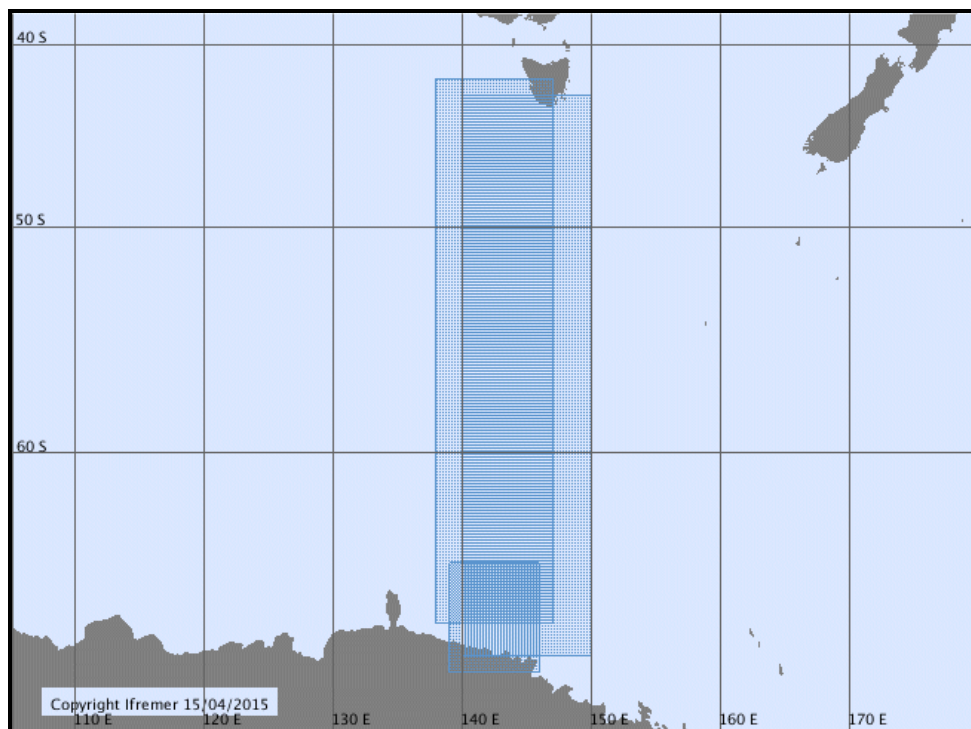


Figure 8 — Tracks of 3 cruises by *L'Astrolabe* in 2014

**CETA 2014**

GARRIGUE Claire  
Du 06/01/14 au 31/01/14

**MINERVE 2014**

TOURATIER Franck  
GOYET Catherine  
Du 03/02/14 au 27/02/14

**SURVOSTRAL 2014/2015**

MORROW-GREINER Rosemary  
Du 22/10/14 au 19/03/15

#### 4.3.1.9 Cruises by *L'Atalante*

The multidisciplinary research vessel *L'Atalante* is intended for work in marine geosciences, physical oceanography and marine biology.



Here are its main characteristics:

**Ocean-going vessel**  
**NODC code: 35A3**  
**Call sign: FNCM**  
**Length 85**  
**Crew: 17/30**  
**Scientists: 30**

For more details: <http://www.flotteoceanographique.fr/La-flotte/Navires/Navires-hauturiers/L-Atalante>



Figure 9 — Tracks of 12 cruises and legs in transit by *L'Atalante* in 2014

**TR\_PAPCAL (Transit)**

Du 11/01/14 au 24/01/14

**AMOP**

MAES Christophe

Du 25/01/14 au 23/02/14

**TR\_CALPAP (Transit)**

Du 26/02/14 au 10/03/14

**TV\_SMT**

LOSSOUARN Hubert

NEDELEC Erwan

Du 15/03/14 au 01/04/14

**SALSA LEG1**

MOULIN Maryline

ASLANIAN Daniel

EVAIN Mikael

Du 04/04/14 au 03/05/14

**SALSA LEG2**

MOULIN Maryline

ASLANIAN Daniel

EVAIN Mikael

Du 04/05/14 au 24/05/14

**TR\_SABDUR (Transit)**

Du 26/05/14 au 14/06/14

**ESSAIS MER**

BLAISE Guillaume

Du 08/08/14 au 10/08/14

**PTOLEMEE**

JORRY Stéphan

Du 12/08/14 au 21/09/14

**PAMELA-MOZ01**

OLU Karine

Du 25/09/14 au 28/10/14

**PAMELA-MOZ02**

ROBIN Cécile

DROZ Laurence

Du 31/10/14 au 04/12/14

**TV\_INFO**

RUE Armel

Du 04/12/14 au 27/12/14

#### 4.3.1.10 Cruises by *Le Suroît*

Built in 1975, *Le Suroît* was upgraded in 1999. The refitting of the ship made it possible to totally upgrade all its scientific equipment. The performances of this equipment are consistent with refocused cruises on the continental shelf, to the bottom of the slope, limited to depths of 4000/4500 m.

- bathymetry
- core sampling, dredging, beam trawling
- high and very high resolution seismics
- CTD/hydrology
- towed SAR-type vehicles
- moorings, station work



Here are its main characteristics:

**Ocean-going vessel**  
**NODC code: 35LU**  
**Call sign: FZVN**  
**Length 56**  
**Crew: 16/23**  
**Scientists: 14**

For more details: <http://www.flotteoceanographique.fr/La-flotte/Navires/Navires-hauturiers/Le-Suroit>



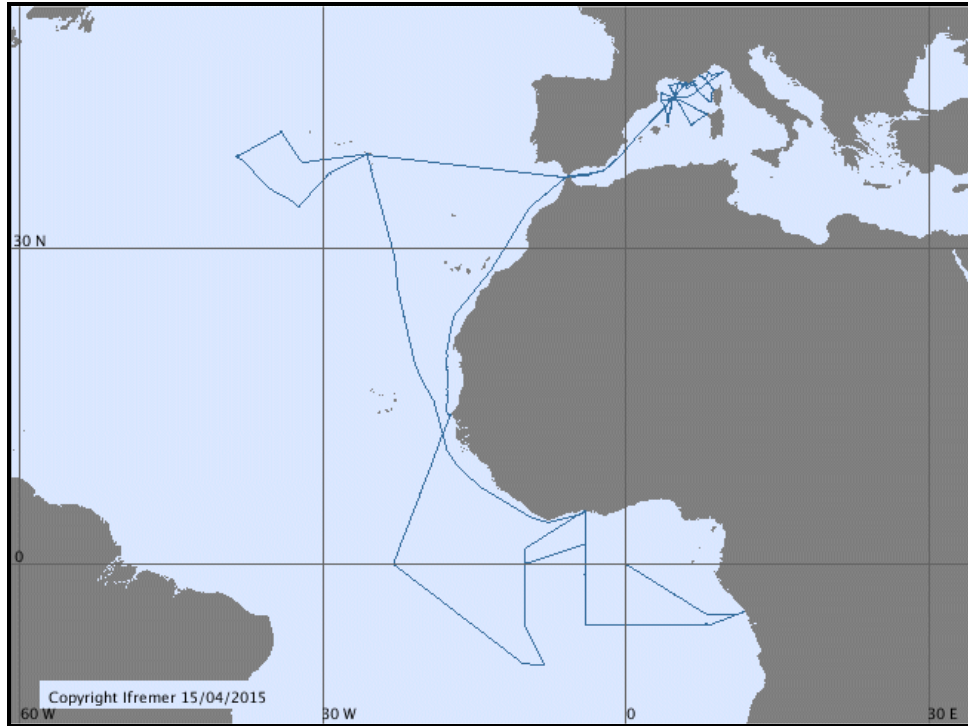


Figure 10 — Tracks of 7 cruises and legs in transit by *Le Suroît* in 2014

**TR\_SEYDAK (Transit)**  
 Du 28/03/14 au 07/04/14  
**PIRATA FR24**  
 GOURIOU Yves  
 BOURLES Bernard  
 Du 09/04/14 au 22/05/14  
**TR\_ABIPDA (Transit)**  
 Du 23/05/14 au 05/06/14

**HYDROBS-MOMAR 2014**  
 PERROT Julie  
 Du 07/06/14 au 19/06/14  
**TR\_PDASEY (Transit)**  
 Du 22/06/14 au 29/06/14  
**MOOSE-GE**  
 TESTOR Pierre  
 Du 04/07/14 au 22/07/14

**ESSHROV1**  
 SIMEONI Patrick  
 Du 01/12/14 au 08/12/14

#### 4.3.1.11 Cruises by *L'Europe*

This oceanographic research vessel is a 29.60 metre-long catamaran operating in the Mediterranean Sea. The outcome of cooperation between Ifremer and ICRAM (the Italian Central institute for applied marine research), it was built in 1993 at Sables d'Olonnes (OCEA) in France.

It is designed to perform a range of missions, in particular related to fisheries research and the coastal environment. It is used for conventional deep-sea trawling (reaching 1,300 metres), pelagic and experimental trawling, deploying set gear (gill nets, longlines, pots, etc.), seismic studies, sedimentology and hydrological sampling.



Here are its main characteristics:

**Coastal vessel**  
**NODC code: 35EU**  
**Call sign: FKJB**  
**Length 30**  
**Crew: 8**  
**Scientists: 8**

For more details: <http://www.flotteoceanographique.fr/La-flotte/Navires/Navires-cotiers/L-Europe>

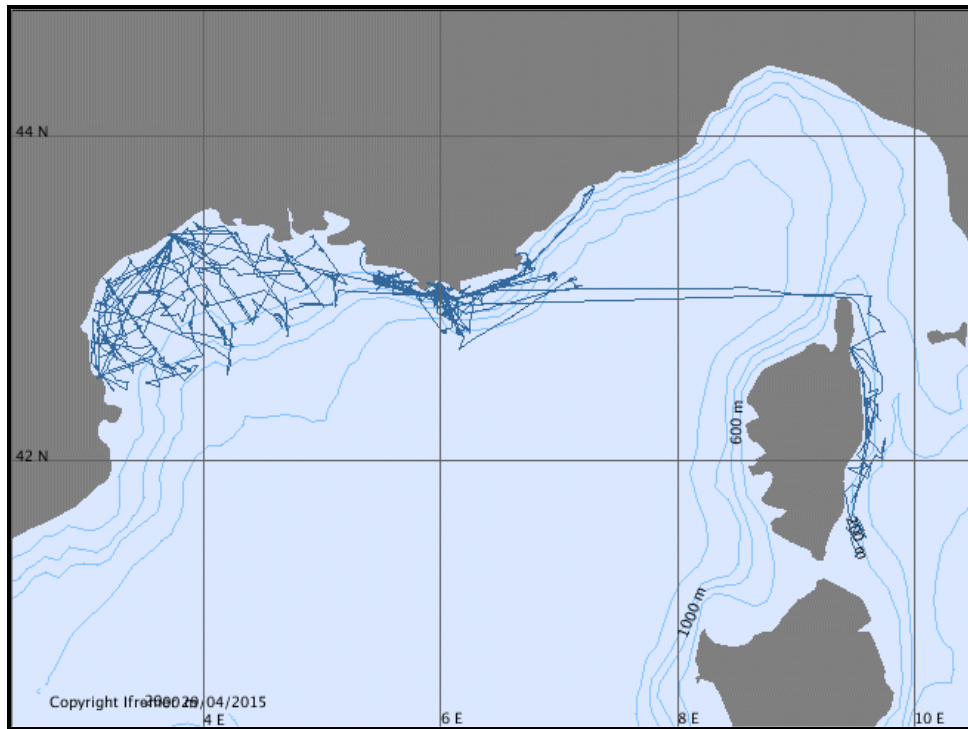


Figure 11 — Tracks of 11 cruises by *L'Europe* in 2014

**STEP 2014**

APPRIOUAL Ronan  
Du 27/01/14 au 02/02/14

**DIVACOU 7-1**

DROGOU Michèle  
BOUHIER Marie-Edith  
Du 03/02/14 au 09/02/14

**LFSHROV-01**

SIMEONI Patrick  
Du 10/02/14 au 15/02/14

**ESSTECH\_14EU**

PACAULT Anne  
Du 21/04/14 au 03/05/14

**DIVACOU 7-2**

BOUHIER Marie-Edith  
DROGOU Michèle  
Du 12/05/14 au 17/05/14

**DYNASFAR-01**

PEDEN Olivier  
Du 21/05/14 au 25/05/14

**MEDITS 2014**

JADAUD Angélique  
METRAL Luisa  
Du 25/05/14 au 28/06/14

**PELMED 2014**

BIGOT Jean-Louis  
BOURDEIX Jean-Hervé  
Du 30/06/14 au 04/08/14

**ESSAUV-BATHYCOR1**

OPDERBECKE Jan  
FABRI Marie-Claire  
Du 07/08/14 au 01/09/14

**DYNASFAR-02**

PEDEN Olivier  
Du 02/09/14 au 05/09/14

**LFSHROV-02**

SIMEONI Patrick  
Du 06/09/14 au 13/09/14

#### 4.3.1.12 Cruises by *Marion Dufresne*

RV *Marion Dufresne* is a multi-purpose research vessel launched in 1995, commissioned by CMA-CGM and jointly chartered by TAAF and IPEV. It provides two main functions:

- **oceanographic research:** on every ice-free ocean, under the responsibility of IPEV - 217 days a year.
- **logistics for French sub-Antarctic islands:** Crozet, Kerguelen, Amsterdam/Saint-Paul, under the responsibility of TAAF – 120 days per year (4 x 30 days).



Here are its main characteristics:

**Ocean-going vessel**  
**NODC code: 35MF**  
**Call sign: FNIN**  
**Length 120.5**  
**Crew: 18/29**  
**Scientists: 60/110**

**Owned by TAAF - Managed by IPEV**

For more details: <http://www.flotteoceanographique.fr/La-flotte/Navires/Navires-hauturiers/Marion-Dufresne>

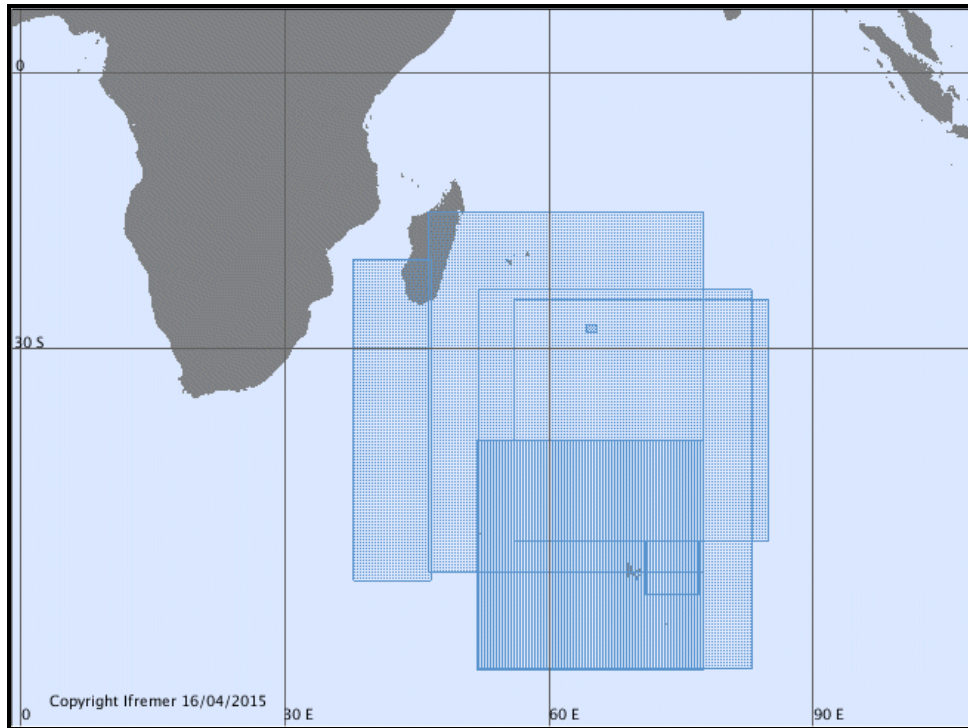


Figure 12 — Tracks of 10 cruises and piggyback legs in transit by *Marion Dufresne* in 2014

**MD 197 / MYCTO**

CHEREL Yves  
Du 06/01/14 au 19/02/14

**VT 135 / OHA-SIS-BIO-6**

ROYER Jean-Yves  
Du 06/01/14 au 19/02/14

**VT 136 / OISO-23**

LO MONACO Claire  
METZL Nicolas  
Du 06/01/14 au 19/02/14

**VT 137 / MDCPR**

KOUBBI Philippe  
Du 06/01/14 au 19/02/14

**VT 138 / MAKER**

PARK Young-Hyang  
Du 06/01/14 au 19/02/14

**MD 198 / NAUSINOOS**

REAUD Yvan  
Du 25/02/14 au 28/02/14

**VT NIVMER14**

GUILLERM Christophe  
Du 12/03/14 au 04/04/14

**VT 139 / MYCTO**

CHEREL Yves  
Du 21/08/14 au 18/09/14

**MD 199 / SISMO-SMOOTH**

LEROY Sylvie  
CANNAT Mathilde  
Du 25/09/14 au 30/10/14

**VT 140 / ESSIAM**

REAUD Yvan  
Du 02/11/14 au 05/11/14

#### 4.3.1.13 Cruises by *Néréis II*

RV *Néréis II*'s activity is in great part focused on the Côte Vermeille area, from the coast to the MOLA point located directly above the Lacaze Duthiers canyon 20 nautical miles off Banyuls sur Mer in Roussillon. *Néréis* performs missions for research, observation, teaching, and aquariology as well as those of scientific mediation and for marine technology, with the Observatory's pool of instrumented buoys to be maintained. The gear most often used on board includes dredges, grabs, plankton nets, bottles, CTDs, corers, etc.

Here are its main characteristics:



**Station's boat**  
**NODC code: 35NS**  
**Call sign: FGA3812**  
**Length 14**  
**Crew: 4**  
**Scientists: 11**

For more details: <http://www.flotteoceanographique.fr/La-flotte/Navires/Navires-de-station/Nereis-II>

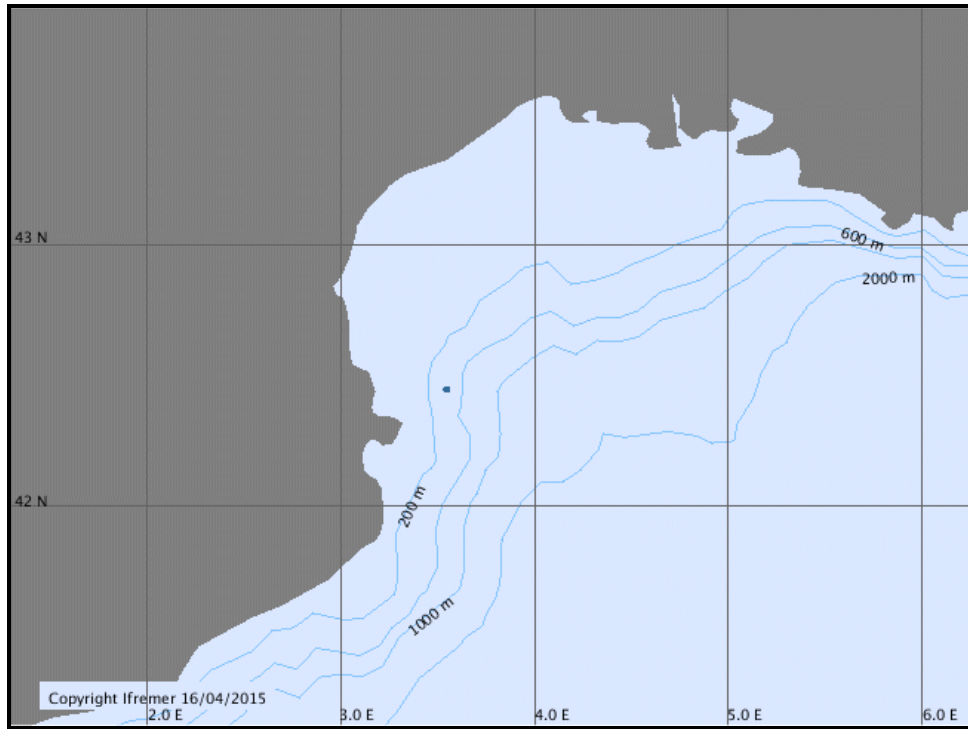


Figure 13 — Track of the cruise by *Néréis II* in 2014

**MOOSE (MOLA)**  
MARIA Eric  
GUEUX Aurore  
Du 10/03/14 au 18/11/14

#### 4.3.1.14 Cruises by *Pourquoi pas?*

This multidisciplinary vessel is intended for the following missions:

- Offshore and inshore hydrography with deployment of hydrographic survey launches
- Exploring the water column, currents
- Underwater mapping using its sounders and sub-seabed characterization (seismics, gravimetry, magnetism)
- Multi-scale study of physical, biological or geological processes
- Surveying of sites using acoustic equipment, deployment of towed (SAR), remotely operated (Victor 6000) or autonomous (Nautile) vehicles, positioning heavy equipment near the seabed using cable (Penfeld)
- Collecting and analyzing samples of water, living matter, sediments or rocks (coring, dredge)
- Deploying the Navy's Newtsuit assistance system to rescue submarines in difficulty.



Here are its main characteristics:

**Ocean-going vessel**  
**NODC code: 35PP**  
**Call sign: FMCY**  
**Length 108**  
**Crew: 35**  
**Scientists: 40**

For more details: <http://www.flotteoceanographique.fr/La-flotte/Navires/Navires-hauturiers/Pourquoi-pas>



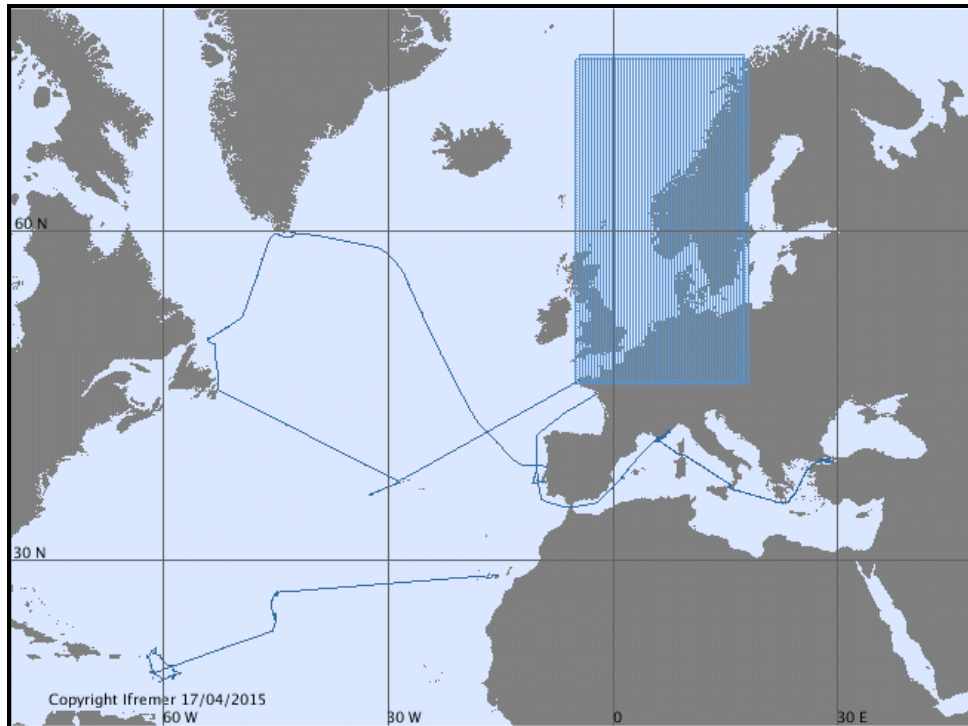


Figure 14 — Tracks of 14 cruises and legs in transit by *Pourquoi Pas ?* in 2014

**BICOSE**

CAMBON-BONAVITA Marie-Anne  
Du 10/01/14 au 11/02/14

**MEDITGIB**

ISC PICHON  
Du 26/04/14 au 12/05/14

**GEOVIDE**

SARTHOU Géraldine  
LHERMINIER Pascale  
Du 16/05/14 au 29/06/14

**TR\_JOHLHA (Transit)**

Du 04/07/14 au 10/07/14

**MOMARSAT2014**

CANNAT Mathilde  
SARRADIN Pierre-Marie  
Du 13/07/14 au 31/07/14

**TR\_LHABRE (Transit)**

Du 01/08/14 au 06/08/14

**BREST\_TROMSAE**

GARLAN Thierry  
Du 08/08/14 au 18/08/14

**TROMSAE\_BREST**

GARLAN Thierry  
Du 21/08/14 au 10/09/14

**TV\_EOP5**

CHRISTOPHE Alain  
Du 13/09/14 au 21/09/14

**ESTIME**

DUSSUD Loïc  
Du 08/10/14 au 20/10/14

**TV\_SEYIST (Transit)**

Du 20/10/14 au 27/10/14

**MARSITECRUISE**

RUFFINE Livio  
HENRY Pierre  
GELI Louis  
Du 29/10/14 au 25/11/14

**TV\_ISTSEY (Transit)**

Du 18/11/14 au 25/11/14

**ESSNAUT 2014**

JUSTINIANO Jean-Paul  
TRIGER Pierre  
Du 30/11/14 au 08/12/14

#### 4.3.1.15 Cruises by *Téthys II*

This oceanographic vessel performs scientific research missions, mainly in the Mediterranean Sea. It can conduct missions lasting about ten days, at distances reaching 200 nautical miles from harbour. This inshore vessel is fitted with instruments and meets the needs of researchers in the fields of marine geosciences, physical and biological oceanography, biogeochemistry and ocean chemistry. It also contributes to long-term marine environmental observation missions and to research and trials missions in various marine technology fields. The vessel can also carry out teaching missions for graduate and post-graduate university levels.



Here are its main characteristics:

**Coastal vessel**  
**NODC code: 35TT**  
**Call sign: FGTO**  
**Length 24**  
**Crew: 7**  
**Scientists: 8**

For more details: <http://www.flotteoceanographique.fr/La-flotte/Navires/Navires-cotiers/Tethys-II>

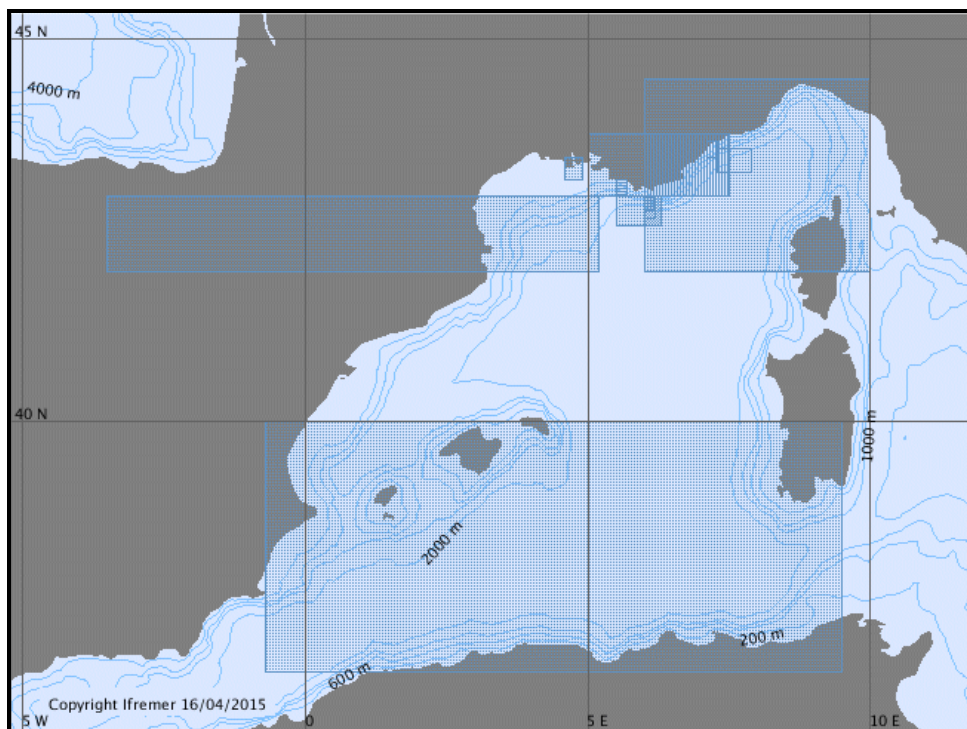


Figure 15 — Tracks of 11 cruises by *Téthys II* in 2014

**MOOSE (ANTARES)**

BHAIRY Nagib  
LEFEVRE Dominique  
Du 01/01/14 au 31/12/14

**BOUSSOLE 2014**

ANTOINE David  
GOLBOL Melek  
VELLUCCI Vincenzo  
Du 20/01/14 au 14/12/14

**MOOSE (DYFAMED)**

COPPOLA Laurent  
DIAMOND Emilie  
Du 20/01/14 au 15/12/14

**MEUST 2014**

GOJAK Carl  
Du 19/05/14 au 21/05/14

**RADLIT-2**

CLAUDE Christelle  
Du 23/05/14 au 30/05/14

**DICASE**

LANSARD Bruno  
Du 02/06/14 au 11/06/14

**SPARKLICE**

MIGEON Sébastien  
Du 19/06/14 au 20/06/14

**SUBGLACIOR**

CALZAS Michel  
ALEMANY Olivier  
Du 10/07/14 au 13/07/14

**SOMBA GE**

TAILLANDIER Vincent  
MORTIER Laurent  
AIT AMEUR Nadira  
Du 13/08/14 au 10/09/14

**MEUST SE**

GOJAK Carl  
Du 13/09/14 au 13/09/14

**BILLION 37**

KUNESCH Stéphane  
Du 01/12/14 au 08/12/14

#### 4.3.1.16 Cruises by *Thalassa*

This fisheries research vessel is intended for the following missions:

- population ecology
- assessment of caught species
- studying the distribution of resources over time and space
- techniques for catching and processing of seafood
- physical oceanography
- occasional deployment of remotely operated vehicle Victor 6000

This vessel is the outcome of cooperation between Ifremer and IEO (Spanish oceanographic institute).



Here are its main characteristics:

**Ocean-going vessel**

**NODC code: 35HT**

**Call sign: FNFP**

**Length 74**

**Crew: 16/25**

**Scientists: 25**

**Co-owned by IEO (SPAIN) – IFREMER**

For more details: <http://www.flotteoceanographique.fr/La-flotte/Navires/Navires-hauturiers/Thalassa>

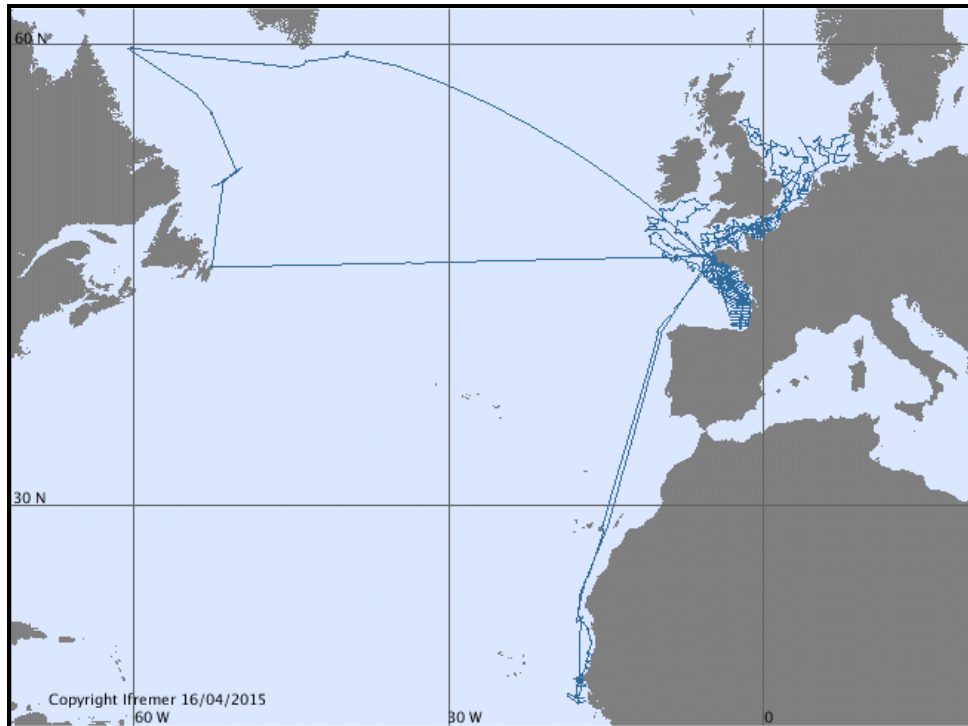


Figure 16 — Tracks of 11 cruises and legs in transit by *Thalassa* in 2014

**IBTS 2014**

VERIN Yves

Du 12/01/14 au 15/02/14

**TR\_BOUBRE** (Transit)

Du 15/02/14 au 17/02/14

**TR\_BRELPM** (Transit)

Du 18/02/14 au 25/02/14

**AWA**

BREHMER Patrice

Du 26/02/14 au 14/03/14

**TR\_DAKBRE** (Transit)

Du 15/03/14 au 25/03/14

**ESSCAMANOC**

TRAVERS-TROLET Morgane

MORANDEAU Fabien

Du 19/04/14 au 23/04/14

**PELGAS 2014**

DORAY Mathieu

Du 24/04/14 au 05/06/14

**TR\_CONBRE** (Transit)

Du 23/07/14 au 24/07/14

**TR\_BREJOH** (Transit)

Du 27/07/14 au 04/08/14

**CAMANOC**

VERIN Yves

TRAVERS-TROLET Morgane

Du 15/09/14 au 13/10/14

**EVHOE 2014**

SALAUN Michèle

PAWLOWSKI Lionel

DUHAMEL Erwan

Du 17/10/14 au 01/12/14

#### 4.3.1.17 Cruises by *Thalia*

*Thalia* is a 24.50 m-long oceanographic vessel operating in the English Channel and the Bay of Biscay. It was built in Cherbourg in 1978.

It is a multi-purpose research vessel used for coastal environmental cruises and fisheries resource assessments. It is designed to perform shallow-water multibeam echo-sounder mapping, take hydrological measurements, film underwater videos, take samples using grab and dredge, as well as performing acoustic or seismic trials.



Here are its main characteristics:

**Coastal vessel**  
**NODC code: 35TC**  
**Call sign: FPCS**  
**Length 24**  
**Crew: 6**  
**Scientists: 6**

For more details: <http://www.flotteoceanographique.fr/La-flotte/Navires/Navires-cotiers/Thalia>

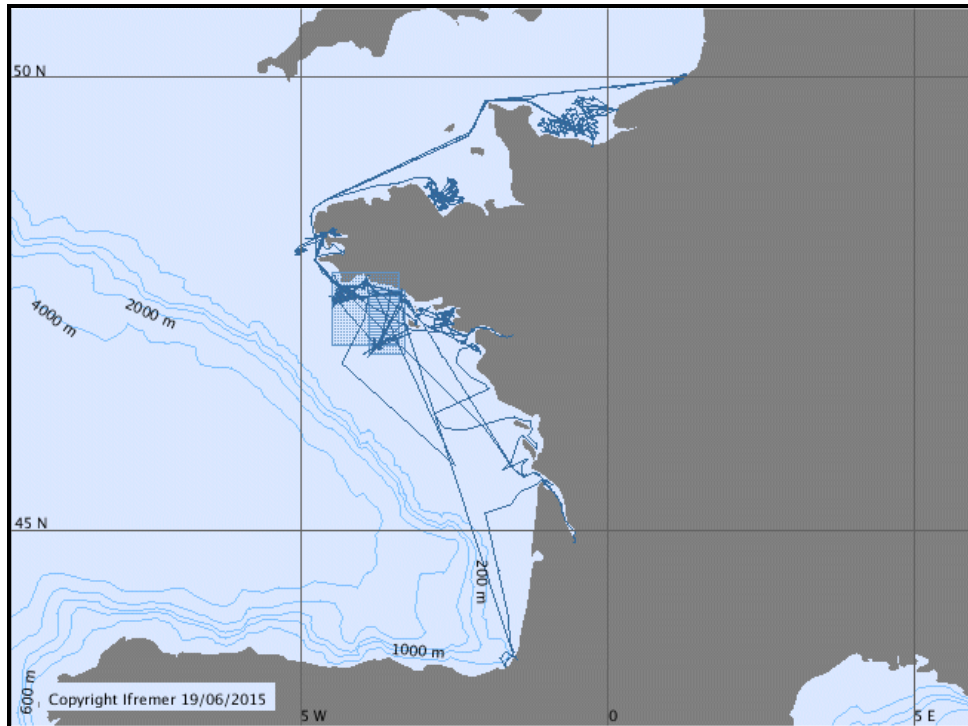


Figure 17 — Tracks of 45 cruises and legs in transit by *Thalia* in 2014

**TR\_CONLOR (Transit)**

Du 10/01/14 au 13/01/14

**ESSTECH\_14TH1**

VIOLLETTE Pascal

LOSSOUARN Hubert

Du 25/01/14 au 27/01/14

**TR\_LORNAN (Transit)**

Du 27/01/14 au 31/01/14

**CAMELIA 3**

CHIFFOLEAU Jean-François

BRACH-PAPA Christophe

Du 30/01/14 au 09/02/14

**TR\_NANLOR (Transit)**

Du 09/02/14 au 11/02/14

**REBENT 2014**

THIEBAUT Eric

Du 13/02/14 au 26/02/14

**TR\_BRESQP (Transit)**

Du 26/02/14 au 28/02/14

**BREBENT-03**

CARLIER Antoine

LEJART Morgane

Du 04/03/14 au 15/03/14

**TR\_BREBOR (Transit)**

Du 15/03/14 au 17/03/14

**MGTS 2014**

BLANC Gérard

Du 18/03/14 au 26/03/14

**TR\_VERLOR (Transit)**

Du 26/03/14 au 28/03/14

**REBENT 2014 LEG2**

BROUDIN Caroline

Du 28/03/14 au 30/03/14

**TR\_CONBRE (Transit)**

Du 16/04/14 au 17/04/14

**ESSTECH\_14TH2**

LOSSOUARN Hubert

Du 17/04/14 au 20/04/14

**TR\_BREDIE (Transit)**

Du 20/04/14 au 22/04/14

**MORCAUX**

LE GAC-ABERNOT Chantal

Du 23/04/14 au 06/05/14

**TR\_DIEBRE (Transit)**

Du 06/05/14 au 08/05/14

**SISPLATEAU**

THOMAS Yannick

Du 10/05/14 au 16/05/14

**TR\_BRELOR (Transit)**

Du 16/05/14 au 17/05/14

**FEBBE-3 LEG1**

LAFFARGUE Pascal

Du 18/05/14 au 30/05/14

**TR\_LORBRE (Transit)**

Du 30/05/14 au 31/05/14

**ETAL2040-01**

DUDUYER Sarah

Du 01/06/14 au 07/06/14

**TR\_BRELOR (Transit)**

Du 08/06/14 au 09/06/14

**FEBBE-3 LEG2**

LAFFARGUE Pascal

Du 09/06/14 au 15/06/14

**TR\_LORBAY (Transit)**

Du 16/06/14 au 17/06/14

**ROCCHSED14**

CHIFFOLEAU Jean-François

Du 18/06/14 au 30/06/14

**TR\_BREOUI (Transit)**

Du 01/07/14 au 03/07/14

**COMOR 44**

FOUCHER Eric

Du 04/07/14 au 23/07/14

**TR\_OUICON (Transit)**

Du 23/07/14 au 25/07/14

**ASPEX6**

MARIE Louis

Du 27/07/14 au 29/07/14

**TR\_CONSQP (Transit)**

Du 21/08/14 au 23/08/14

**COSB2014**

CAROFF Nicolas

Du 23/08/14 au 05/09/14



**IN VIVO 2014**

CAROFF Nicolas

Du 05/09/14 au 16/09/14

**TR\_SQPSNZ** (Transit)

Du 16/09/14 au 22/09/14

**NURSE 2014**

BRIND'AMOUR Anik

Du 22/09/14 au 01/10/14

**TR\_SNZLOR** (Transit)

Du 01/10/14 au 02/10/14

**FEBBE-4 LEG1**

LAFFARGUE Pascal

Du 03/10/14 au 15/10/14

**TR\_LORLTU** (Transit)

Du 15/10/14 au 16/10/14

**CARMOLIT 2014 LEG2**

QUEMENER Loïc

Du 17/10/14 au 18/10/14

**TR\_LTULOR** (Transit)

Du 18/10/14 au 19/10/14

**FEBBE-4 LEG2**

LAFFARGUE Pascal

Du 22/10/14 au 27/10/14

**TR\_LORBRE** (Transit)

Du 28/10/14 au 29/10/14

**ETAL2040-02**

PACAULT Anne

Du 30/10/14 au 05/11/14

**TR\_BRELOR** (Transit)

Du 06/11/14 au 07/11/14

**TR\_LORCON** (Transit)

Du 08/11/14 au 09/11/14



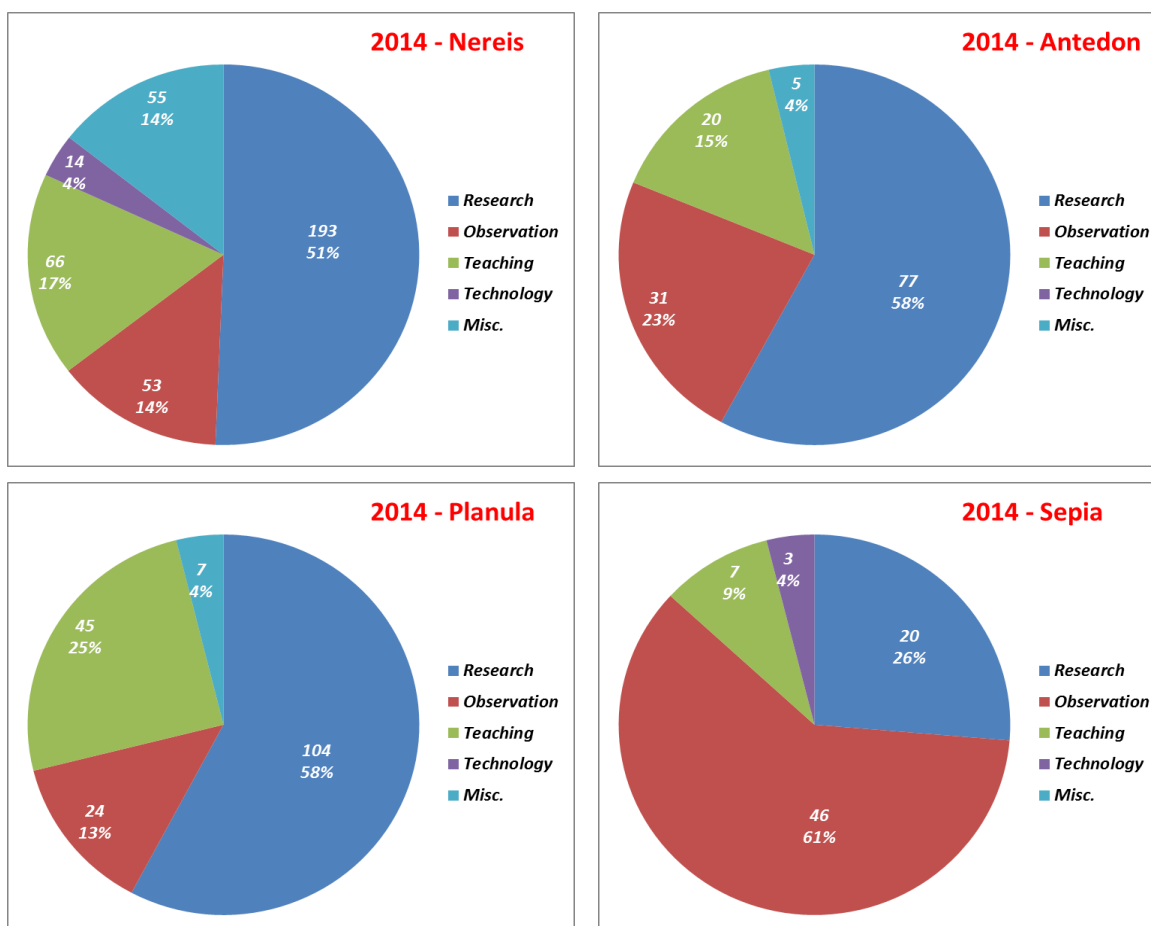
### 4.3.2 Cruises not referenced at SISMER (station vessels)

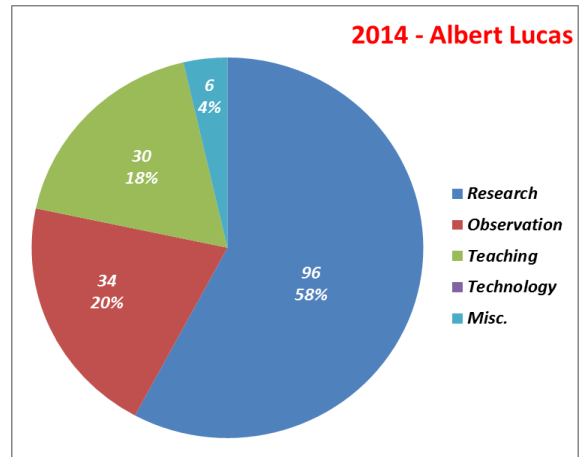
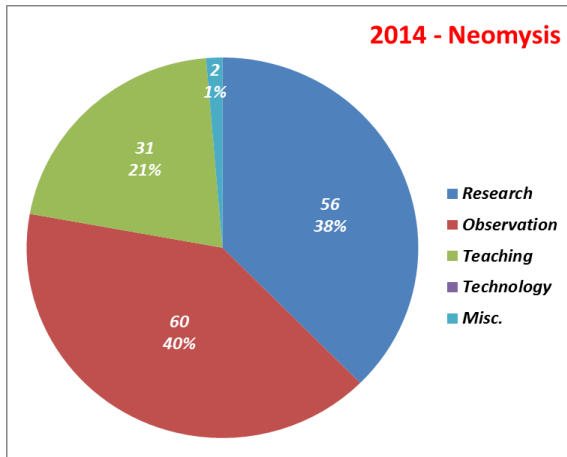
The 6 station vessels go out for the day, or even for just a few hours. However, their activity is far from negligible. While awaiting the information needed to reference them at SISMER, the CNFC has the following report:

The table below shows the distribution of days at sea by vessel and by field of activity. For RV Néréïs, this is given in the number of outings at sea (and not in the number of days).

2014	Year	Research	Observing	Teaching	Technology	Miscellaneous	Total
Marine station	Vessel						
Banyuls	Néréïs	193	53	66	14	55	381
Marseilles	Antedon	77	31	20	0	5	133
Arcachon	Planula	104	24	45	0	7	180
Wimereux	Sepia	20	46	7	3	0	76
Roscoff	Neomysis	56	60	31	0	2	149
Brest	Albert Lucas	96	34	30	6	0	166
	<b>Total</b>	<b>546</b>	<b>248</b>	<b>199</b>	<b>23</b>	<b>69</b>	<b>1085</b>

The graphs below show the distribution of days at sea by vessel (or outings in the case of RV Néréïs) broken down by field of activity. Sea outings in their great majority are devoted to research and marine observations.





#### 4.4 CRUISES LIST

The alphabetical list of cruises performed in 2014 is given below.

Information about each cruise can be accessed via the WEBSITE Nautilus <http://www.ifremer.fr/sismerData/jsp/campagnesALaMer.jsp> by clicking [CTRL + left click] on the name of the cruise.

Cruise	Vessel	Start date	End date	Geographical area	Name of chief scientist	Chief scientist's laboratory
<a href="#">AMOP</a>	<i>L'Atalante</i>	25 01 2014	23 02 2014	SE Pacific(140 W Boundary)	MAES Christophe	LEGOS SPATIAL GEOPHYSICS AND OCEANOGRAPHY LABORATORY, CNRS
<a href="#">APEX</a>	<i>Alis</i>	30 01 2014	13 02 2014	Coral Sea	VIGLIOLA Laurent	IRD NOUMEA CENTER, IRD
<a href="#">ASPEX6</a>	<i>Thalia</i>	27 07 2014	29 07 2014	Bay of Biscay	MARIE Louis	OPS/LPO- OCEAN PHYSICS LABORATORY, Ifremer
<a href="#">AWA</a>	<i>Thalassa</i>	26 02 2014	14 03 2014	Atlantic Ocean	BREHMER Patrice	MARINE ENVIRONMENTAL SCIENCES LABORATORY (LEMAR), CNRS
<a href="#">BASSAS DA INDIA</a>	<i>Beautemps-Beaupré</i>	24 06 2014	28 06 2014	Indian Ocean	IETA MATHIAS	SHOM - BREST CENTER, French Navy/SHOM
<a href="#">BIBELOT</a>	<i>Alis</i>	14 02 2014	28 02 2014	Coral Sea	FAUVELOT Cécile	IRD NOUMEA CENTER, IRD
<a href="#">BICOSE</a>	<i>Pourquoi pas?</i>	10 01 2014	11 02 2014	NW Atlantic (40 W boundary)	CAMBON-BONAVITA Marie-Anne	EEP DEEP-SEA ECOSYSTEM STUDIES DEPARTMENT, Ifremer
<a href="#">BIEROC - LA MONDREE</a>	<i>Haliotis</i>	07 08 2014	16 08 2014	English Channel	CLIQUET Dominique	UMR 6566 CREA AH BASSE-NORMANDIE REGIONAL ARCHEOLOGY SERVICE , University of Caen
<a href="#">BILLION 37</a>	<i>Téthys II</i>	01 12 2014	08 12 2014	Western Mediterranean Basin	KUNESCH Stéphane	CEFREM MARINE ENVIRONMENT RESEARCH AND TRAINING CENTER, University of Perpignan
<a href="#">BOUSSOLE 2014</a>	<i>Téthys II</i>	20 01 2014	14 12 2014	Ligurian Sea	GOLBOL Melek	OCEANOGRAPHY LABORATORY OF VILLEFRANCHE (LOV), University of Paris VI - UPMC
<a href="#">BREBENT-03</a>	<i>Thalia</i>	04 03 2014	15 03 2014	English Channel	CARLIER Antoine	DYNECO/BENTHOS- BENTHIC ECOLOGY LABORATORY, Ifremer
<a href="#">BREST TROMSAE</a>	<i>Pourquoi pas?</i>	08 08 2014	18 08 2014	North Sea	GARLAN Thierry	SHOM - BREST CENTER, French Navy/SHOM
<a href="#">CALIOPE 02</a>	<i>Alis</i>	07 03 2014	22 03 2014	Coral Sea	DUPOUY Cécile	MEDITERRANEAN INSTITUTE OF OCEANOGRAPHY (UMR 235 MIO) - LUMINY, University of the Mediterranean (U2)
<a href="#">CAMANOC</a>	<i>Thalassa</i>	15 09 2014	13 10 2014	English Channel	TRAVERS-TROLET Morgane	HMMN- ENGLISH CHANNEL-NORTH SEA FISHERIES SCIENCES DEPARTMENT, Ifremer
<a href="#">CAMELIA 3</a>	<i>Thalia</i>	30 01 2014	09 02 2014	Bay of Biscay	CHIFFOLEAU Jean-François	DPT RBE / UR BIOGEOCHEMISTRY & ECOTOXICOLOGY (NANTES), Ifremer
<a href="#">CARMOLIT 2014 LEG1</a>	<i>Côtes De La Manche</i>	26 02 2014	27 02 2014	Bay of Biscay	QUEMENER Loïc	RDT - DPT TECHNOLOGICAL RESEARCH & DEVELOPMENT, Ifremer

Cruise	Vessel	Start date	End date	Geographical area	Name of chief scientist	Chief scientist's laboratory
<a href="#">CARMOLIT 2014 LEG2</a>	<i>Thalia</i>	17 10 2014	18 10 2014	Bay of Biscay	QUEMENER Loïc	RDT - DPT TECHNOLOGICAL RESEARCH & DEVELOPMENT, Ifremer
<a href="#">CETA 2014</a>	<i>L'Astrolabe</i>	06 01 2014	31 01 2014	Antarctic Ocean	GARRIGUE Claire	IRD NOUMEA CENTER, IRD
<a href="#">CGFS2014</a>	<i>Gwen Drez</i>	01 10 2014	31 10 2014	English Channel	GOASCOZ Nicolas	HMMN- ENGLISH CHANNEL-NORTH SEA FISHERIES SCIENCES DEPARTMENT, Ifremer
<a href="#">COLOR-CAMPAIGNS LEG1</a>	<i>Côtes De La Manche</i>	20 03 2014	25 03 2014	Bay of Biscay	LAFON Virginie	EPOC OCEAN ENVIRONMENTS & PALEOENVIRONMENTS, University of Bordeaux I
<a href="#">COLOR-CAMPAIGNS LEG2</a>	<i>Côtes De La Manche</i>	13 07 2014	18 07 2014	Bay of Biscay	LAFON Virginie	EPOC OCEAN ENVIRONMENTS & PALEOENVIRONMENTS, University of Bordeaux I
<a href="#">COMOR 44</a>	<i>Thalia</i>	04 07 2014	23 07 2014	English Channel	FOUCHER Eric	HMMN- ENGLISH CHANNEL-NORTH SEA FISHERIES SCIENCES DEPARTMENT, Ifremer
<a href="#">COMORES_LEG1</a>	<i>Beautemps-Beaupré</i>	03 08 2014	12 08 2014	Indian Ocean	IETA GAUMET	SHOM - BREST CENTER, French Navy/SHOM
<a href="#">COMORES_LEG2</a>	<i>Beautemps-Beaupré</i>	16 08 2014	17 08 2014	Indian Ocean	IETA GAUMET	SHOM - BREST CENTER, French Navy/SHOM
<a href="#">COSB2014</a>	<i>Thalia</i>	23 08 2014	05 09 2014	English Channel	CAROFF Nicolas	STH- FISHERIES SCIENCES AND TECHNOLOGIES DEPARTMENT, Ifremer
<a href="#">DICASE</a>	<i>Téthys II</i>	02 06 2014	11 06 2014	Western Mediterranean Basin	LANSARD Bruno	LSCE CLIMATE AND ENVIRONMENTAL SCIENCES LABORATORY, CEA
<a href="#">DIVACOU 7-1</a>	<i>L'Europe</i>	03 02 2014	09 02 2014	Ligurian Sea	DROGOU Michèle	IFREMER TOULON CENTER, Ifremer
<a href="#">DIVACOU 7-2</a>	<i>L'Europe</i>	12 05 2014	17 05 2014	Western Mediterranean Basin	DROGOU Michèle	IFREMER TOULON CENTER, Ifremer
<a href="#">DJIBOUTI_LEG1</a>	<i>Beautemps-Beaupré</i>	17 02 2014	18 02 2014	Eastern Mediterranean Basin	IETA LE MOIGNE Pierre-Yves	SHOM - BREST CENTER, French Navy/SHOM
<a href="#">DJIBOUTI_LEG2</a>	<i>Beautemps-Beaupré</i>	23 02 2014	24 02 2014	Gulf of Aden	IETA LE MOIGNE Pierre-Yves	SHOM - BREST CENTER, French Navy/SHOM
<a href="#">DYNASFAR-01</a>	<i>L'Europe</i>	21 05 2014	25 05 2014	Western Mediterranean Basin	PEDEN Olivier	OPS/LPO OCEAN PHYSICS LABORATORY, Ifremer
<a href="#">DYNASFAR-02</a>	<i>L'Europe</i>	02 09 2014	05 09 2014	Mediterranean	PEDEN Olivier	OPS/LPO OCEAN PHYSICS LABORATORY, Ifremer
<a href="#">ESSAIS MER</a>	<i>L'Atalante</i>	08 08 2014	10 08 2014	Indian Ocean	BLAISE Guillaume	GENAVIR BREST, Ifremer

Cruise	Vessel	Start date	End date	Geographical area	Name of chief scientist	Chief scientist's laboratory
<a href="#">ESSAUV-BATHYCORA1</a>	<i>L'Europe</i>	07 08 2014	01 09 2014	Western Mediterranean Basin	FABRI Marie-Claire	EEP/LEP DEEP SEA ENVIRONMENT LABORATORY, Ifremer
<a href="#">ESSCAMANOC</a>	<i>Thalassa</i>	19 04 2014	23 04 2014	Celtic Sea	MORANDEAU Fabien	IFREMER LORIENT STATION, Ifremer
<a href="#">ESSHROV1</a>	<i>Le Suroît</i>	01 12 2014	08 12 2014	Western Mediterranean Basin	SIMEONI Patrick	IFREMER TOULON CENTER, Ifremer
<a href="#">ESSNAUT 2014</a>	<i>Pourquoi pas?</i>	30 11 2014	08 12 2014	Western Mediterranean Basin	TRIGER Pierre	GENAVIR LA SEYNE SUR MER, Ifremer
<a href="#">ESSTECH</a>	<i>Antea</i>	03 11 2014	04 11 2014	Bay of Biscay	TREDUNIT Gilles	GENAVIR BREST, Ifremer
<a href="#">ESSTECH_14EU</a>	<i>L'Europe</i>	21 04 2014	03 05 2014	Western Mediterranean Basin	PACAULT Anne	NSE - VESSELS AND SHIPBOARD SYSTEMS, Ifremer
<a href="#">ESSTECH_14HA</a>	<i>Haliotis</i>	18 02 2014	19 02 2014	Celtic Sea	BISQUAY Hervé	GENAVIR BREST, Ifremer
<a href="#">ESSTECH_14TH1</a>	<i>Thalia</i>	25 01 2014	27 01 2014	Bay of Biscay	LOSSOUARN Hubert	GENAVIR BREST, Ifremer
<a href="#">ESSTECH_14TH2</a>	<i>Thalia</i>	17 04 2014	20 04 2014	Celtic Sea	LOSSOUARN Hubert	GENAVIR BREST, Ifremer
<a href="#">ESTIME</a>	<i>Pourquoi pas?</i>	08 10 2014	20 10 2014	Ligurian Sea	DUSSUD Loïc	RDT - DPT TECHNOLOGICAL RESEARCH & DEVELOPMENT, Ifremer
<a href="#">ESTUSOM 2014 - LEG1</a>	<i>Haliotis</i>	29 03 2014	11 04 2014	English Channel	MICHEL Charlotte	CONTINENTAL & COASTAL MORPHODYNAMICS LABORATORY - UMR 6143 (MC2), University of Rouen
<a href="#">ESTUSOM 2014 - LEG2</a>	<i>Haliotis</i>	16 09 2014	28 09 2014	English Channel	MICHEL Charlotte	CONTINENTAL & COASTAL MORPHODYNAMICS LABORATORY - UMR 6143 (MC2), University of Rouen
<a href="#">ETAL2040-01</a>	<i>Thalia</i>	01 06 2014	07 06 2014	Celtic Sea	DUDUYER Sarah	NSE - VESSELS AND SHIPBOARD SYSTEMS, Ifremer
<a href="#">ETAL2040-02</a>	<i>Thalia</i>	30 10 2014	05 11 2014	NE Atlantic (40 W boundary)	PACAULT Anne	NSE - VESSELS AND SHIPBOARD SYSTEMS, Ifremer
<a href="#">EVHOE 2014</a>	<i>Thalassa</i>	17 10 2014	01 12 2014	Bay of Biscay	DUHAMEL Erwan	STH/LBP- FISHERIES BIOLOGY LABORATORY, Ifremer
<a href="#">FEBBE-3 LEG1</a>	<i>Thalia</i>	18 05 2014	30 05 2014	Bay of Biscay	LAFFARGUE Pascal	EMH- ECOLOGY AND MODELS FOR FISHERIES SCIENCE DEPARTMENT, Ifremer
<a href="#">FEBBE-3 LEG2</a>	<i>Thalia</i>	09 06 2014	15 06 2014	Bay of Biscay	LAFFARGUE Pascal	EMH- ECOLOGY AND MODELS FOR FISHERIES SCIENCE DEPARTMENT, Ifremer

Cruise	Vessel	Start date	End date	Geographical area	Name of chief scientist	Chief scientist's laboratory
<a href="#">FEBBE-4 LEG1</a>	<i>Thalia</i>	03 10 2014	15 10 2014	Bay of Biscay	LAFFARGUE Pascal	EMH- ECOLOGY AND MODELS FOR FISHERIES SCIENCE DEPARTMENT, Ifremer
<a href="#">FEBBE-4 LEG2</a>	<i>Thalia</i>	22 10 2014	27 10 2014	Bay of Biscay	LAFFARGUE Pascal	EMH- ECOLOGY AND MODELS FOR FISHERIES SCIENCE DEPARTMENT, Ifremer
<a href="#">FISSEL 2014</a>	<i>Haliotis</i>	25 05 2014	13 06 2014	Bay of Biscay	HENAFF Alain	GEOMER - UMR 6554 LETG (LITTORAL, ENV., REMOTE SENSING.GEOMAT.), University of western Brittany (UBO)
<a href="#">FROMVEUR</a>	<i>Beautemps-Beaupré</i>	21 01 2014	21 01 2014	NE Atlantic (40 W boundary)	IETA LE MOIGNE Pierre-Yves	SHOM - BREST CENTER, French Navy/SHOM
<a href="#">GEOMELOINE</a>	<i>Haliotis</i>	03 05 2014	24 05 2014	English Channel	EHRHOLD Axel	GM- MARINE GEOSCIENCES, Ifremer
<a href="#">GEOVIDE</a>	<i>Pourquoi pas?</i>	16 05 2014	29 06 2014	North Atlantic Ocean	SARTHOU Géraldine	MARINE ENVIRONMENTAL SCIENCES LABORATORY (LEMAR), CNRS
<a href="#">HALOGIR</a>	<i>Côtes De La Manche</i>	03 09 2014	08 09 2014	Bay of Biscay	LABADIE Pierre	EPOC OCEAN ENVIRONMENTS & PALEOENVIRONMENTS, University of Bordeaux I
<a href="#">HYDROBS-MOMAR 2014</a>	<i>Le Suroît</i>	07 06 2014	19 06 2014	North Atlantic Ocean	PERROT Julie	UMR 6538 CNRS "OCEAN DOMAINS" (LDO) - IUEM, University of western Brittany (UBO)
<a href="#">IBTS 2014</a>	<i>Thalassa</i>	12 01 2014	15 02 2014	North Sea	VERIN Yves	HMMN- ENGLISH CHANNEL-NORTH SEA FISHERIES SCIENCES DEPARTMENT, Ifremer
<a href="#">IN VIVO 2014</a>	<i>Thalia</i>	05 09 2014	16 09 2014	English Channel	CAROFF Nicolas	STH- FISHERIES SCIENCES AND TECHNOLOGIES DEPARTMENT, Ifremer
<a href="#">KAVIENG</a>	<i>Alis</i>	08 08 2014	07 09 2014	Bismarck Sea	PAYRI Claude	IRD NOUMEA CENTER, IRD
<a href="#">LFSHROV-01</a>	<i>L'Europe</i>	10 02 2014	15 02 2014	Western Mediterranean Basin	SIMEONI Patrick	IFREMER TOULON CENTER, Ifremer
<a href="#">LFSHROV-02</a>	<i>L'Europe</i>	06 09 2014	13 09 2014	Western Mediterranean Basin	SIMEONI Patrick	IFREMER TOULON CENTER, Ifremer
<a href="#">MADEEP</a>	<i>Alis</i>	05 04 2014	09 05 2014	South Pacific	CORBARI Laure	SYSTEMATICS & EVOLUTION DEPARTMENT, National Museum of natural history MNHN
<a href="#">MAKER 2014/1061</a>	<i>La Curieuse</i>	14 12 2014	16 12 2014	Antarctic Ocean	PARK Young-Hyang	PHYSICAL OCEANOGRAPHY LABORATORY, National museum of natural history
<a href="#">MARSITECRUISE</a>	<i>Pourquoi pas?</i>	29 10 2014	25 11 2014	Marmara Sea	GELI Louis	GM- MARINE GEOSCIENCES, Ifremer
<a href="#">MD 197 / MYCTO</a>	<i>Marion Dufresne</i>	06 01 2014	19 02 2014	Indian Ocean	CHEREL Yves	CENTRE FOR BIOLOGICAL STUDIES (CNRS-CEBC), CNRS

Cruise	Vessel	Start date	End date	Geographical area	Name of chief scientist	Chief scientist's laboratory
<a href="#">MD 198 / NAUSINOOS</a>	<i>Marion Dufresne</i>	25 02 2014	28 02 2014	Indian Ocean	REAUD Yvan	PAUL-EMILE VICTOR FRENCH POLAR INSTITUTE (IPEV), IPEV
<a href="#">MD 199 / SISMO-SMOOTH</a>	<i>Marion Dufresne</i>	25 09 2014	30 10 2014	Indian Ocean	LEROY Sylvie	INSTITUTE OF EARTH SCIENCES IN PARIS - UMR 7193 ISTEP, University of Paris VI - UPMC
<a href="#">MEDITGIB</a>	<i>Pourquoi pas?</i>	26 04 2014	12 05 2014	NW Atlantic (40 W boundary)	ISC PICHON	SHOM - BREST CENTER, French Navy/SHOM
<a href="#">MEDITS 2014</a>	<i>L'Europe</i>	25 05 2014	28 06 2014	Western Mediterranean Basin	JADAUD Angélique	IFREMER SETE STATION, Ifremer
<a href="#">MEUST SE</a>	<i>Téthys II</i>	13 09 2014	13 09 2014	Mediterranean	GOJAK Carl	INSU TECHNICAL DIVISION, CNRS
<a href="#">MEUST 2014</a>	<i>Téthys II</i>	19 05 2014	21 05 2014	Western Mediterranean Basin	GOJAK Carl	INSU TECHNICAL DIVISION, CNRS
<a href="#">MGTS 2014</a>	<i>Thalia</i>	18 03 2014	26 03 2014	Bay of Biscay	BLANC Gérard	EPOC - DEPARTMENT OF GEOLOGY AND OCEANOGRAPHY (DGO), University of Bordeaux I
<a href="#">MINERVE 2014</a>	<i>L'Astrolabe</i>	03 02 2014	27 02 2014	Antarctic Ocean	TOURATIER Franck	IMAGES-INSTITUTE FOR MODELING AND ANALYSIS OF MARINE GEO-ENVIRONMENT, University of Perpignan
<a href="#">MOMARSAT2014</a>	<i>Pourquoi pas?</i>	13 07 2014	31 07 2014	North Atlantic Ocean	SARRADIN Pierre-Marie	EEP/LEP- DEEP SEA ENVIRONMENT LABORATORY, IFREMER
<a href="#">MOOSE (ANTARES)</a>	<i>Téthys II</i>	01 01 2014	31 12 2014	Western Mediterranean Basin	LEFEVRE Dominique	MEDITERRANEAN INSTITUTE OF OCEANOGRAPHY (MIO) - LUMINY, University of the Mediterranean (U2)
<a href="#">MOOSE (DYFAMED)</a>	<i>Téthys II</i>	20 01 2014	15 12 2014	Ligurian Sea	COPPOLA Laurent	OCEANOLOGICAL OBSERVATORY OF VILLEFRANCHE SUR MER (OOV), University of Paris VI - UPMC
<a href="#">MOOSE (MOLA)</a>	<i>Néréis II</i>	10 03 2014	18 11 2014	Western Mediterranean Basin	GUEUX Aurore	OCEANOLOGICAL OBSERVATORY OF BANYULS (OSU-OOB), University of Paris VI - UPMC
<a href="#">MOOSE-GE</a>	<i>Le Suroît</i>	04 07 2014	22 07 2014	Western Mediterranean Basin	TESTOR Pierre	LOCEAN OCEANOGRAPHY AND CLIMATE LABORATORY, UMR 7159, University of Paris VI - UPMC
<a href="#">MORCAUX</a>	<i>Thalia</i>	23 04 2014	06 05 2014	English Channel	LE GAC-ABERNOT Chantal	WESTERN BRITANNY ENVIRONMENT RESOURCES LABORATORY, Ifremer
<a href="#">NECTALIS-3</a>	<i>Alis</i>	20 11 2014	08 12 2014	SW Pacific (140 W boundary )	ALLAIN Valérie	SECRETARIAT GENERAL OF THE PACIFIC COMMUNITY, CPS
<a href="#">NOSYBE DIEGO HELLVILLE</a>	<i>Beautemps-Beaupré</i>	21 06 2014	02 07 2014	Indian Ocean	IETA MATHIAS	SHOM - BREST CENTER, French Navy/SHOM
<a href="#">NOSYBE HELLVILLE DZAOUDZI</a>	<i>Beautemps-Beaupré</i>	07 07 2014	12 07 2014	Indian Ocean	IETA MATHIAS	SHOM - BREST CENTER, French Navy/SHOM

Cruise	Vessel	Start date	End date	Geographical area	Name of chief scientist	Chief scientist's laboratory
<a href="#">NURSE 2014</a>	<i>Thalia</i>	22 09 2014	01 10 2014	Bay of Biscay	BRIND'AMOUR Anik	EMH- ECOLOGY AND MODELS FOR FISHERIES SCIENCE DEPARTMENT, Ifremer
<a href="#">ORHAGO 14</a>	<i>Antea</i>	05 11 2014	25 11 2014	Bay of Biscay	COUPEAU Yann	IFREMER LA ROCHELLE-L'HOUMEAU STATION, Ifremer
PAMELA-MOZ01	<i>L'Atalante</i>	25 09 2014	28 10 2014	Mozambique Channel	OLU Karine	EPP/LEP- DEEP SEA ENVIRONMENT LABORATORY, IFREMER
PAMELA-MOZ02	<i>L'Atalante</i>	31 10 2014	04 12 2014	Mozambique Channel	ROBIN Cécile	LABORATORY OF GEOSCIENCES - UMR CNRS 6118, University of Rennes I
<a href="#">PELGAS 2014</a>	<i>Thalassa</i>	24 04 2014	05 06 2014	Bay of Biscay	DORAY Mathieu	EMH- ECOLOGY AND MODELS FOR FISHERIES SCIENCE DEPARTMENT, Ifremer
<a href="#">PELMED 2014</a>	<i>L'Europe</i>	30 06 2014	04 08 2014	Western Mediterranean Basin	BOURDEIX Jean-Hervé	IFREMER SETE STATION, Ifremer
<a href="#">PERSMED 2</a>	<i>Antea</i>	01 04 2014	26 04 2014	Western Mediterranean Basin	TRONCZYNSKI Jacek	DPT RBE / UR BIOGEOCHEMISTRY & ECOTOXICOLOGY (NANTES), Ifremer
<a href="#">PHYSINDIEN1_LEG1</a>	<i>Beautemps-Beaupré</i>	03 03 2014	04 03 2014	Gulf of Aden	IETA LE MOIGNE Pierre-Yves	SHOM - BREST CENTER, French Navy/SHOM
<a href="#">PHYSINDIEN1_LEG2</a>	<i>Beautemps-Beaupré</i>	07 03 2014	18 03 2014	Gulf of Oman	IETA LE MOIGNE Pierre-Yves	SHOM - BREST CENTER, French Navy/SHOM
<a href="#">PHYSINDIEN1_LEG3</a>	<i>Beautemps-Beaupré</i>	21 03 2014	25 03 2014	Gulf of Oman	IETA LE MOIGNE Pierre-Yves	SHOM - BREST CENTER, French Navy/SHOM
<a href="#">PHYSINDIEN2</a>	<i>Beautemps-Beaupré</i>	21 05 2014	02 06 2014	Arabian Sea (Gulf of Oman)	IETA MATHIAS	SHOM - BREST CENTER, French Navy/SHOM
<a href="#">PIRATA FR24</a>	<i>Le Suroît</i>	09 04 2014	22 05 2014	SE Atlantic (20 W boundary)	GOURIOU Yves	IRD BRITTANY CENTER, IRD
<a href="#">POCK&amp;TIDE</a>	<i>Haliotis</i>	14 04 2014	01 05 2014	Bay of Biscay	BALTZER Agnès	LETG - LITTORAL ENVIRONMENT REMOTE SENSING GEOMATICS, University of Nantes
<a href="#">PRISTINE 3</a>	<i>Alis</i>	22 09 2014	09 10 2014	Coral Sea	VIGLIOLA Laurent	IRD NOUMEA CENTER, IRD
<a href="#">PROTEKER 3</a>	<i>La Curieuse</i>	01 12 2014	14 12 2014	Antarctic Ocean	FERAL Jean-Pierre	MED. INSTITUTE OF BIODIVERSITY & MARINE AND CONTINENTAL ECOLOGY, University of the Mediterranean (U2)
PTOLEMEE	<i>L'Atalante</i>	12 08 2014	21 09 2014	Mozambique Channel	JORRY Stéphan	GM- MARINE GEOSCIENCES, Ifremer
<a href="#">RADLIT-2</a>	<i>Téthys II</i>	23 05 2014	30 05 2014	Western Mediterranean Basin	CLAUDE Christelle	CEREGE, Paul Cézanne University (Aix-Marseille III)



Cruise	Vessel	Start date	End date	Geographical area	Name of chief scientist	Chief scientist's laboratory
<a href="#">REBENT 2014</a>	<i>Thalia</i>	13 02 2014	26 02 2014	Bay of Biscay	THIEBAUT Eric	ROSCOFF BIOLOGICAL STATION (OSU-SBR), CNRS
<a href="#">REBENT 2014 LEG2</a>	<i>Thalia</i>	28 03 2014	30 03 2014	Bay of Biscay	BROUDIN Caroline	ROSCOFF BIOLOGICAL STATION (OSU-SBR), CNRS
<a href="#">ROCCHSED14</a>	<i>Thalia</i>	18 06 2014	30 06 2014	Bay of Biscay	CHIFFOLEAU Jean-François	DPT RBE / UR BIOGEOCHEMISTRY & ECOTOXICOLOGY (NANTES), Ifremer
SALSA LEG1	<i>L'Atalante</i>	04 04 2014	03 05 2014	South Atlantic Ocean	ASLANIAN Daniel	GM- MARINE GEOSCIENCES, Ifremer
SALSA LEG2	<i>L'Atalante</i>	04 05 2014	24 05 2014	South Atlantic Ocean	ASLANIAN Daniel	GM- MARINE GEOSCIENCES, Ifremer
<a href="#">SEDBUSCH_NORD</a>	<i>Haliotis</i>	22 08 2014	03 09 2014	North Sea	TRENTESAUX Alain	GEOSYSTEMS LABORATORY, MARINE & ANALYTICAL CHEMISTRY TEAM, University of Sciences & Technologies of Lille 1
<a href="#">SEDBUSCH_NORMANDIE</a>	<i>Haliotis</i>	30 06 2014	22 07 2014	English Channel	MARION Claire	NATIONAL INSTITUTE OF MARINE SCIENCES 1 TECHNIQUES INTECHMER, Intechmer
<a href="#">SISPLATEAU</a>	<i>Thalia</i>	10 05 2014	16 05 2014	Celtic Sea	THOMAS Yannick	GM- MARINE GEOSCIENCES, Ifremer
<a href="#">SOCADEN</a>	<i>Beautemps-Beaupré</i>	26 02 2014	03 03 2014	Gulf of Aden	IETA LE MOIGNE Pierre-Yves	SHOM - BREST CENTER, French Navy/SHOM
<a href="#">SOGIR 14</a>	<i>Côtes De La Manche</i>	20 01 2014	21 11 2014	Bay of Biscay	DERRIENNIC Hervé	EPOC - DEPARTMENT OF GEOLOGY AND OCEANOGRAPHY (DGO), University of Bordeaux I
<a href="#">SOMBA GE</a>	<i>Téthys II</i>	13 08 2014	10 09 2014	Western Mediterranean Basin	MORTIER Laurent	LOCEAN OCEANOGRAPHY AND CLIMATE LABORATORY, UMR 7159, University of Paris VI - UPMC
<a href="#">SPARKLICE</a>	<i>Téthys II</i>	19 06 2014	20 06 2014	Ligurian Sea	MIGEON Sébastien	GEOSCIENCES AZUR - SOPHIA ANTIPOLIS (GEOAZUR), CNRS
<a href="#">SPLASHALIOT-01</a>	<i>Haliotis</i>	18 06 2014	24 06 2014	Bay of Biscay	MAILLET Grégoire	LABORATORY OF ENVIRONMENTAL STUDIES ON ANTHROPIZED SYSTEMS (LEESA), University of Angers
<a href="#">SPLASHALIOT-02</a>	<i>Haliotis</i>	06 09 2014	14 09 2014	English Channel	MAILLET Grégoire	LABORATORY OF ENVIRONMENTAL STUDIES ON ANTHROPIZED SYSTEMS (LEESA), University of Angers
<a href="#">SPOT07 FISHBOX</a>	<i>Alis</i>	11 10 2014	21 10 2014	Coral Sea	BIEGALA Isabelle	MEDITERRANEAN INSTITUTE OF OCEANOGRAPHY (UMR 235 MIO) - LUMINY, University of the Mediterranean (U2)
<a href="#">SPOT2014-LEG1 (06)</a>	<i>Alis</i>	03 03 2014	06 03 2014	SW Pacific (140 W boundary )	RODIER Martine	IRD NOUMEA CENTER, IRD
<a href="#">SPOT2014-LEG2 (08)</a>	<i>Alis</i>	10 12 2014	16 12 2014	Coral Sea	DUPOUY Cécile	MEDITERRANEAN INSTITUTE OF OCEANOGRAPHY (UMR 235 MIO) - LUMINY, University of the Mediterranean (U2)

Cruise	Vessel	Start date	End date	Geographical area	Name of chief scientist	Chief scientist's laboratory
<a href="#">STEP 2014</a>	<i>L'Europe</i>	27 01 2014	02 02 2014	Western Mediterranean Basin	APPRIOUAL Ronan	GM- MARINE GEOSCIENCES, Ifremer
<a href="#">SUBGLACIOR</a>	<i>Téthys II</i>	10 07 2014	13 07 2014	Western Mediterranean Basin	ALEMANY Olivier	LGGE LABORATORY OF GLACIOLOGY AND GEOPHYSICS OF THE ENVIRONMENT, University of Grenoble 1 - UJF (Joseph Fourier)
<a href="#">SURVOSTRAL 2014/2015</a>	<i>L'Astrolabe</i>	22 10 2014	19 03 2015	Antarctic Ocean	MORROW-GREINER Rosemary	LEGOS SPATIAL GEOPHYSICS AND OCEANOGRAPHY LABORATORY, CNRS
<a href="#">SYRRE</a>	<i>Côtes De La Manche</i>	07 05 2014	17 05 2014	Bay of Biscay	THINON Isabelle	BUREAU OF GEOLOGY & MIN. RESEARCH/GEO (BRGM, ORLEANS), BRGM
<a href="#">TR_ABIPDA</a>	<i>Le Suroît</i>	23 05 2014	05 06 2014	NW Atlantic (40 W boundary)	Transit with no chief scientist.	GENAVIR BREST, Ifremer
<a href="#">TR_BOUBRE</a>	<i>Thalassa</i>	15 02 2014	17 02 2014	North Sea	Transit with no chief scientist.	GENAVIR BREST, Ifremer
<a href="#">TR_BREBOR</a>	<i>Thalia</i>	15 03 2014	17 03 2014	Bay of Biscay	Transit with no chief scientist.	GENAVIR BREST, Ifremer
<a href="#">TR_BREDIE</a>	<i>Thalia</i>	20 04 2014	22 04 2014	English Channel	Transit with no chief scientist.	GENAVIR BREST, Ifremer
<a href="#">TR_BREJOH</a>	<i>Thalassa</i>	27 07 2014	04 08 2014	North Atlantic Ocean	Transit with no chief scientist.	GENAVIR BREST, Ifremer
<a href="#">TR_BRELOR</a>	<i>Thalia</i>	08 06 2014	09 06 2014	Bay of Biscay	Transit with no chief scientist.	GENAVIR BREST, Ifremer
<a href="#">TR_BRELOR</a>	<i>Thalia</i>	16 05 2014	17 05 2014	Bay of Biscay	Transit with no chief scientist.	GENAVIR BREST, Ifremer
<a href="#">TR_BRELOR</a>	<i>Thalia</i>	06 11 2014	07 11 2014	Bay of Biscay	Transit with no chief scientist.	GENAVIR BREST, Ifremer
<a href="#">TR_BRELPM</a>	<i>Thalassa</i>	18 02 2014	25 02 2014	NE Atlantic (40 W boundary)	Transit with no chief scientist.	GENAVIR BREST, Ifremer
<a href="#">TR_BREQUI</a>	<i>Thalia</i>	01 07 2014	03 07 2014	English Channel	Transit with no chief scientist.	GENAVIR BREST, Ifremer
<a href="#">TR_BRESMA</a>	<i>Antea</i>	02 12 2014	07 12 2014	NE Atlantic (40 W boundary)	Transit with no chief scientist.	GENAVIR BREST, Ifremer
<a href="#">TR_BRESQP</a>	<i>Thalia</i>	26 02 2014	28 02 2014	Bay of Biscay	Transit with no chief scientist.	GENAVIR BREST, Ifremer
<a href="#">TR_CALPAP</a>	<i>L'Atalante</i>	26 02 2014	10 03 2014	NE Pacific (180 W Boundary)	Transit with no chief scientist.	GENAVIR BREST, Ifremer

Cruise	Vessel	Start date	End date	Geographical area	Name of chief scientist	Chief scientist's laboratory
<a href="#">TR_CHECON</a>	<i>Gwen Drez</i>	01 11 2014	02 11 2014	English Channel	Transit with no chief scientist.	GENAVIR BREST, Ifremer
<a href="#">TR_CONBRE</a>	<i>Thalassa</i>	23 07 2014	24 07 2014	NE Atlantic (40 W boundary)	Transit with no chief scientist.	GENAVIR BREST, Ifremer
<a href="#">TR_CONBRE</a>	<i>Thalia</i>	16 04 2014	17 04 2014	Bay of Biscay	Transit with no chief scientist.	GENAVIR BREST, Ifremer
<a href="#">TR_CONCHE</a>	<i>Gwen Drez</i>	28 09 2014	01 10 2014	Bay of Biscay	Transit with no chief scientist.	GENAVIR BREST, Ifremer
<a href="#">TR_CONLOR</a>	<i>Thalia</i>	10 01 2014	13 01 2014	Bay of Biscay	Transit with no chief scientist.	GENAVIR BREST, Ifremer
<a href="#">TR_CONSQP</a>	<i>Thalia</i>	21 08 2014	23 08 2014	Bay of Biscay	Transit with no chief scientist.	GENAVIR BREST, Ifremer
<a href="#">TR_DAKBRE</a>	<i>Thalassa</i>	15 03 2014	25 03 2014	Atlantic Ocean	Transit with no chief scientist.	GENAVIR BREST, Ifremer
<a href="#">TR_DIEBRE</a>	<i>Thalia</i>	06 05 2014	08 05 2014	English Channel	Transit with no chief scientist.	GENAVIR BREST, Ifremer
<a href="#">TR_HAPKAV</a>	<i>Alis</i>	15 07 2014	08 08 2014	South China Sea (Nan Hai)	Transit with no chief scientist.	GENAVIR BREST, Ifremer
<a href="#">TR_HAPSUB</a>	<i>Alis</i>	26 05 2014	05 06 2014	South China Sea (Nan Hai)	Transit with no chief scientist.	GENAVIR BREST, Ifremer
<a href="#">TR_HOCHAP</a>	<i>Alis</i>	28 06 2014	03 07 2014	South China Sea (Nan Hai)	Transit with no chief scientist.	GENAVIR BREST, Ifremer
<a href="#">TR_JOHLHA</a>	<i>Pourquoi pas?</i>	04 07 2014	10 07 2014	North Atlantic Ocean	Transit with no chief scientist.	GENAVIR BREST, Ifremer
<a href="#">TR_LHABRE</a>	<i>Pourquoi pas?</i>	01 08 2014	06 08 2014	NE Atlantic (40 W boundary)	Transit with no chief scientist.	GENAVIR BREST, Ifremer
<a href="#">TR_LORBAY</a>	<i>Thalia</i>	16 06 2014	17 06 2014	Bay of Biscay	Transit with no chief scientist.	GENAVIR BREST, Ifremer
<a href="#">TR_LORBRE</a>	<i>Thalia</i>	30 05 2014	31 05 2014	Bay of Biscay	Transit with no chief scientist.	GENAVIR BREST, Ifremer
<a href="#">TR_LORBRE</a>	<i>Thalia</i>	28 10 2014	29 10 2014	Bay of Biscay	Transit with no chief scientist.	GENAVIR BREST, Ifremer
<a href="#">TR_LORCON</a>	<i>Thalia</i>	08 11 2014	09 11 2014	Bay of Biscay	Transit with no chief scientist.	GENAVIR BREST, Ifremer

Cruise	Vessel	Start date	End date	Geographical area	Name of chief scientist	Chief scientist's laboratory
<a href="#">TR_LORLTU</a>	<i>Thalia</i>	15 10 2014	16 10 2014	Bay of Biscay	Transit with no chief scientist.	GENAVIR BREST, Ifremer
<a href="#">TR_LORNAN</a>	<i>Thalia</i>	27 01 2014	31 01 2014	Bay of Biscay	Transit with no chief scientist.	GENAVIR BREST, Ifremer
<a href="#">TR_LTULOR</a>	<i>Thalia</i>	18 10 2014	19 10 2014	Bay of Biscay	Transit with no chief scientist.	GENAVIR BREST, Ifremer
<a href="#">TR_MADHAP</a>	<i>Alis</i>	11 05 2014	26 05 2014	South China Sea (Nan Hai)	Transit with no chief scientist.	GENAVIR BREST, Ifremer
<a href="#">TR_NANLOR</a>	<i>Thalia</i>	09 02 2014	11 02 2014	Bay of Biscay	Transit with no chief scientist.	GENAVIR BREST, Ifremer
<a href="#">TR_NMAMAD</a>	<i>Alis</i>	23 03 2014	04 04 2014	Pacific Ocean	Transit with no chief scientist.	GENAVIR BREST, Ifremer
<a href="#">TR_OUICON</a>	<i>Thalia</i>	23 07 2014	25 07 2014	English Channel	Transit with no chief scientist.	GENAVIR BREST, Ifremer
<a href="#">TR_PAPCAL</a>	<i>L'Atalante</i>	11 01 2014	24 01 2014	Caribbean Sea	Transit with no chief scientist.	GENAVIR BREST, Ifremer
<a href="#">TR_PDASEY</a>	<i>Le Suroît</i>	22 06 2014	29 06 2014	NE Atlantic (40 W boundary)	Transit with no chief scientist.	GENAVIR BREST, Ifremer
<a href="#">TR_SABDUR</a>	<i>L'Atalante</i>	26 05 2014	14 06 2014	South Atlantic Ocean	Transit with no chief scientist.	GENAVIR BREST, Ifremer
<a href="#">TR_SEYDAK</a>	<i>Le Suroît</i>	28 03 2014	07 04 2014	NE Atlantic (40 W boundary)	Transit with no chief scientist.	GENAVIR BREST, Ifremer
<a href="#">TR_SEYLOR</a>	<i>Antea</i>	15 09 2014	21 09 2014	Bay of Biscay	Transit with no chief scientist.	GENAVIR BREST, Ifremer
<a href="#">TR_SNZLOR</a>	<i>Thalia</i>	01 10 2014	02 10 2014	Bay of Biscay	Transit with no chief scientist.	GENAVIR BREST, Ifremer
<a href="#">TR_SQPSNZ</a>	<i>Thalia</i>	16 09 2014	22 09 2014	English Channel	Transit with no chief scientist.	GENAVIR BREST, Ifremer
<a href="#">TR_SUBHOC</a>	<i>Alis</i>	06 06 2014	19 06 2014	South China Sea (Nan Hai)	Transit with no chief scientist.	GENAVIR BREST, Ifremer
<a href="#">TR_VERLOR</a>	<i>Thalia</i>	26 03 2014	28 03 2014	Bay of Biscay	Transit with no chief scientist.	GENAVIR BREST, Ifremer
<a href="#">TRACES</a>	<i>Côtes De La Manche</i>	21 05 2014	31 05 2014	English Channel	BAILLY DU BOIS Pascal	INSTITUTE FOR RADIOPROTECTION AND NUCLEAR SAFETY, CEA

Cruise	Vessel	Start date	End date	Geographical area	Name of chief scientist	Chief scientist's laboratory
<a href="#">TREMOR</a>	<i>Côtes De La Manche</i>	01 06 2014	15 06 2014	English Channel	GAULLIER Virginie	SEDIMENTARY DOMAIN PROCESSES AND BUDGETS, University of sciences and technologies of Lille 1
<a href="#">TROMSAE BREST</a>	<i>Pourquoi pas?</i>	21 08 2014	10 09 2014	North Sea	GARLAN Thierry	SHOM - BREST CENTER, French Navy/SHOM
<a href="#">TV ANTIRANANA LONGONI</a>	<i>Beautemps-Beaupré</i>	02 09 2014	04 09 2014	Indian Ocean	IETA GAUMET	SHOM - BREST CENTER, French Navy/SHOM
<a href="#">TV BREST MALTE</a>	<i>Beautemps-Beaupré</i>	27 01 2014	03 02 2014	Western Mediterranean Basin	IETA LE MOIGNE Pierre-Yves	SHOM - BREST CENTER, French Navy/SHOM
<a href="#">TV DIEGO-SUAREZ HELLVILLE</a>	<i>Beautemps-Beaupré</i>	20 06 2014	30 06 2014	Indian Ocean	IETA MATHIAS	SHOM - BREST CENTER, French Navy/SHOM
<a href="#">TV DJIBOUTI SALALAH</a>	<i>Beautemps-Beaupré</i>	24 02 2014	26 02 2014	Gulf of Aden	IETA LE MOIGNE Pierre-Yves	SHOM - BREST CENTER, French Navy/SHOM
<a href="#">TV DJIBOUTI TUNIS</a>	<i>Beautemps-Beaupré</i>	24 10 2014	04 11 2014	Mediterranean	IETA GAUMET	SHOM - BREST CENTER, French Navy/SHOM
<a href="#">TV DZAOUZDI MORONI</a>	<i>Beautemps-Beaupré</i>	02 08 2014	03 08 2014	Indian Ocean	IETA GAUMET	SHOM - BREST CENTER, French Navy/SHOM
<a href="#">TV EOP5</a>	<i>Pourquoi pas?</i>	13 09 2014	21 09 2014	NE Atlantic (40 W boundary)	CHRISTOPHE Alain	GENAVIR LA SEYNE SUR MER, Ifremer
<a href="#">TV HELLVILLE DZAOUZDI</a>	<i>Beautemps-Beaupré</i>	12 07 2014	13 07 2014	Indian Ocean	IETA MATHIAS	SHOM - BREST CENTER, French Navy/SHOM
<a href="#">TV INFO</a>	<i>L'Atalante</i>	04 12 2014	27 12 2014	South Atlantic Ocean	RUE Armel	NSE - VESSELS AND SHIPBOARD SYSTEMS, Ifremer
<a href="#">TV ISTSEY</a>	<i>Pourquoi pas?</i>	18 11 2014	25 11 2014	Mediterranean	Transit with no chief scientist.	GENAVIR BREST, Ifremer
<a href="#">TV LONGONI MAHE</a>	<i>Beautemps-Beaupré</i>	04 10 2014	08 10 2014	Indian Ocean	IETA GAUMET	SHOM - BREST CENTER, French Navy/SHOM
<a href="#">TV MAHE DJIBOUTI</a>	<i>Beautemps-Beaupré</i>	13 10 2014	21 10 2014	Indian Ocean	IETA GAUMET	SHOM - BREST CENTER, French Navy/SHOM
<a href="#">TV MALTE DJIBOUTI</a>	<i>Beautemps-Beaupré</i>	07 02 2014	14 02 2014	Eastern Mediterranean Basin	IETA LE MOIGNE Pierre-Yves	SHOM - BREST CENTER, French Navy/SHOM
<a href="#">TV MASCATE DIEGO-SUAREZ</a>	<i>Beautemps-Beaupré</i>	05 06 2014	15 06 2014	Arabian Sea (Gulf of Oman)	IETA MATHIAS	SHOM - BREST CENTER, French Navy/SHOM
<a href="#">TV MORONI ANTIRANANA</a>	<i>Beautemps-Beaupré</i>	28 08 2014	30 08 2014	Indian Ocean	IETA GAUMET	SHOM - BREST CENTER, French Navy/SHOM

Cruise	Vessel	Start date	End date	Geographical area	Name of chief scientist	Chief scientist's laboratory
<a href="#">TV_SEYIST</a>	<i>Pourquoi pas?</i>	20 10 2014	27 10 2014	Mediterranean	Transit with no chief scientist.	GENAVIR BREST, Ifremer
<a href="#">TV_SMT</a>	<i>L'Atalante</i>	15 03 2014	01 04 2014	Atlantic Ocean	LOSSOUARN Hubert	GENAVIR BREST, Ifremer
<a href="#">TV_TUNIS_BREST</a>	<i>Beautemps-Beaupré</i>	08 11 2014	13 11 2014	Mediterranean	IETA GAUMET	SHOM - BREST CENTER, French Navy/SHOM
<a href="#">VITEL-NORTH</a>	<i>Alis</i>	05 07 2014	15 07 2014	South China Sea (Nan Hai)	OUILLON Sylvain	IRD NOUMEA CENTER, IRD
<a href="#">VITEL-SOUTH</a>	<i>Alis</i>	19 06 2014	27 06 2014	South China Sea (Nan Hai)	OUILLON Sylvain	IRD NOUMEA CENTER, IRD
<a href="#">VT NIVMER14</a>	<i>Marion Dufresne</i>	12 03 2014	04 04 2014	Antarctic Ocean	GUILLERM Christophe	CNRS/INSU TECHNICAL DIVISION FIELD OFFICE, CNRS
<a href="#">VT 135 / OHA-SIS-BIO-6</a>	<i>Marion Dufresne</i>	06 01 2014	19 02 2014	Indian Ocean	ROYER Jean-Yves	IUEM MARINE OBSERVATORY (OSU-IUEM), University of Western Brittany (UBO)
<a href="#">VT 136 / OISO-23</a>	<i>Marion Dufresne</i>	06 01 2014	19 02 2014	Indian Ocean	LO MONACO Claire	LOCEAN OCEANOGRAPHY AND CLIMATE LABORATORY, UMR 7159, University of Paris VI - UPMC
<a href="#">VT 137 / MDCPR</a>	<i>Marion Dufresne</i>	06 01 2014	19 02 2014	Indian Ocean	KOUBBI Philippe	OCEANOGRAPHY LABORATORY OF VILLEFRANCHE (LOV), University of Paris VI - UPMC
<a href="#">VT 138 / MAKER</a>	<i>Marion Dufresne</i>	06 01 2014	19 02 2014	Antarctic Ocean	PARK Young-Hyang	PHYSICAL OCEANOGRAPHY LABORATORY, National museum of natural history
<a href="#">VT 139 / MYCTO</a>	<i>Marion Dufresne</i>	21 08 2014	18 09 2014	Indian Ocean	CHEREL Yves	CENTRE FOR BIOLOGICAL STUDIES (CNRS-CEBC), CNRS
<a href="#">VT 140 / ESSIAM</a>	<i>Marion Dufresne</i>	02 11 2014	05 11 2014	Indian Ocean	REAUD Yvan	PAUL-EMILE VICTOR FRENCH POLAR INSTITUTE (IPEV), IPEV



## 5 Contacts

IFREMER / SISMER

Marine scientific information systems

Brest Center

BP 70 – 29280 Plouzané

France

**Tel. (33)2 98 22 49 16**

**Fax (33)2 98 22 46 44**

E-mail: [csr\\_sismer@ifremer.fr](mailto:csr_sismer@ifremer.fr)

[sismer@ifremer.fr](mailto:sismer@ifremer.fr)

Website: [http://www.ifremer.fr/sismer/index\\_UK.htm](http://www.ifremer.fr/sismer/index_UK.htm)

Nolwenn DANILOUX

IDM/SISMER

**Tel. (33)2 98 22 44 04**

E-mail: [Nolwenn.Danioux@ifremer.fr](mailto:Nolwenn.Danioux@ifremer.fr)

**Published by IFREMER/IDM/SISMER**

**ISSN 1967-5542**

**@Copyright IFREMER**

## 6 Acronymes

<b>ADCP</b>	Acoustic Doppler Current Profiler
<b>BSH/DOD</b>	Federal maritime and hydrographic agency of Germany / German oceanographic data centre
<b>CNEXO</b>	National centre for ocean exploitation
<b>CNFC</b>	National coastal fleet commission
<b>CNFH</b>	National ocean-going fleet commission
<b>CNRS</b>	National centre for scientific research
<b>COSS</b>	Strategic and scientific orientation council
<b>CSR</b>	Cruise Summary Report (formerly called ROSCOP)
<b>CTD</b>	Conductivity Temperature Depth
<b>DMON/PF</b>	Division of seagoing facilities and operations / Fleet scheduling
<b>GENAVIR</b>	Research vessel management (IFREMER group)
<b>ICES</b>	International Council for the Exploration of the Sea
<b>IDM</b>	IT and Marine Data Department
<b>IEO</b>	Spanish oceanography institute
<b>IFREMER</b>	French research institute for exploitation of the sea (formerly ISTPM-CNEXO)
<b>IFRTP</b>	French polar research and technology institute
<b>IMN</b>	Marine and digital infrastructure department
<b>INSU</b>	National institute for sciences of the universe
<b>IOC</b>	Intergovernmental Oceanographic Commission
<b>IODE</b>	International Oceanographic Data and Information Exchange
<b>IPEV</b>	Paul Emile Victor French polar institute
<b>IRD</b>	French research institute for cooperative development (formerly ORSTOM)
<b>ISI</b>	Information systems engineering
<b>ISTPM</b>	Scientific and technical institute for marine fisheries
<b>JSU</b>	Joint service unit
<b>MNHN</b>	National museum of natural history
<b>OFEG</b>	Ocean Facilities Exchange Group
<b>ORSTOM</b>	Overseas France office of scientific and technical research
<b>ROV</b>	Remote Operated Vehicle
<b>SHOM</b>	French navy hydrographic and oceanographic service
<b>SISMER</b>	Marine scientific information systems
<b>UNESCO</b>	United Nations Educational, Scientific and Cultural Organization
<b>XBT</b>	Expendable BathyThermograph