

## AUXILIARY MATERIAL

### Appendix A

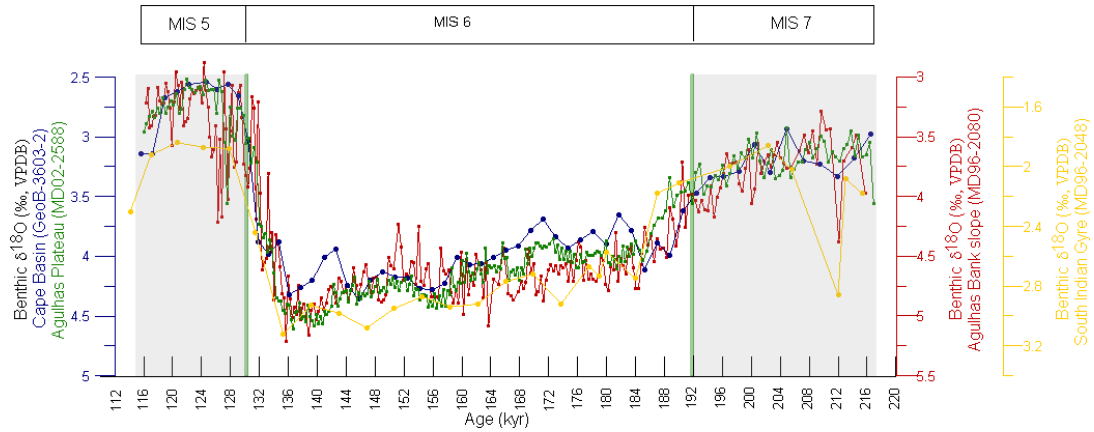


Figure A1. Benthic  $\delta^{18}\text{O}$  records from core MD96-2080 in the Agulhas Bank slope (red) [Martínez-Méndez *et al.*, 2008], core GeoB-3603-2 in Cape Basin (blue) [Peeters *et al.*, 2004], core MD02-2588 in the Agulhas Plateau (gray) [Ziegler *et al.*, 2013], and core MD96-2048 in the South Indian Gyre (yellow) [Caley *et al.*, 2011]. The age scales of published data from cores GeoB-3603-2 and MD96-2048 were slightly readjusted to improve the alignment between the four different  $\delta^{18}\text{O}$  records. Grey-shaded areas mark the interglacial stages MIS 7 and MIS 5 and green vertical lines mark boundaries between stages.