


Rapport interne LPO/15-24

UMR 6523 Laboratoire de Physique des Océans 	DELAYED MODE QUALITY CONTROL OF OVIDE ARGO DATA FLOAT WMO 6900640	
Date : 22 octobre 2015	Auteurs : Lagadec Catherine Thierry Virginie Cabanes Cécile	Archivage : LPO

Liste de diffusion :

LPO

Carole Despinoy (ODE/LPO)

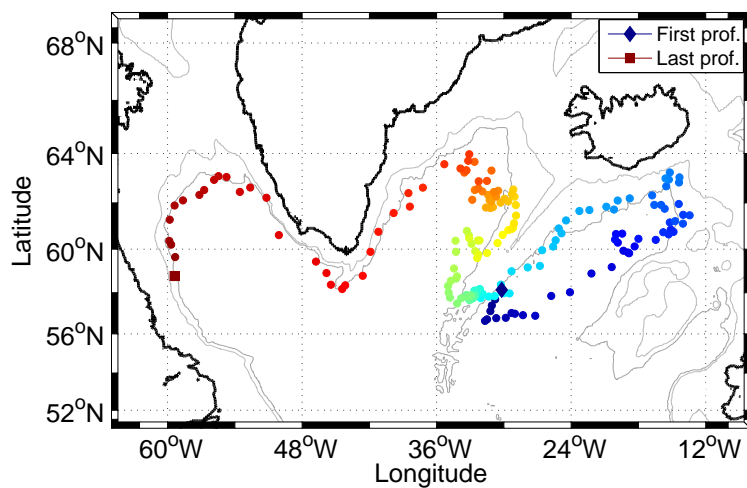
DELAYED MODE QUALITY CONTROL OF OVIDE ARGO DATA FLOAT WMO 6900640

Internal Report LPO 15-24

C. Lagadec - V. Thierry - C. Cabanes

January 18, 2016

Float WMO 6900640



1 Presentation and DMQC summary

Number	Deployment (cycle OD) cycle OD	Last cycle 176
Provor WMO 6900640	28/06/2008 3h05	
CTS3 07-S3-19	58.211 N 29.725 W	
Date of control	Float status	Last cycle
November 2010	Active	88
Coriolis transmission		9/12/2010
Date of last control	Float status	Last cycle
October 2015	DEAD	25/04/2013
Coriolis transmission		22/10/15

Table 1: Status of the float

Warning : Note that all the figures are plotted with the latest QC flag values (the modifications mentioned table 2 are taken into account).

1.1 QC flag checks and interesting profiles

Warning : the resolution is equal to 10 dbar from the surface to 800 dbar, then 25 dbar from 500 to 2000 dbar. Salinity data between 0 and 5 dbar are suspicious because they are acquired when the pump of the CTD is turned off.

1.2 Salinity correction from the OW method

We cannot see any evidence of a drift or bias in the salinity measurement. We thus conclude that it is not necessary to correct the salinity data. Errors bars are maximum value between 0.01 and those determined from the OW method with parameters from the OW configuration 129.

2 Data

Cycle	Parameter	Vertical level	Old flag	New flag	Comments	Coriolis transmiss
7	PSAL	66 dbar	1	4		30/11/10
7	PSAL	from 1039 dbar to bottom	1	4		30/11/10 30/11/10
12	PSAL	all the profile	1	4		30/11/10
19	TEMP,PSAL	one value around 800 dbar	3	1		30/11/10
32	TEMP,PSAL	4 values(bottom)	4	1		30/11/10
36	PSAL	4 values(surface)	4	1		30/11/10
40	TEMP,PSAL	10 values(bottom)	4	1		30/11/10
41	TEMP,PSAL	7 values(bottom)	4	1		30/11/10
47	PSAL	all the profile	1	4		30/11/10
60	TEMP,PSAL	400-500 dbar	3	1		30/11/10
all cycles (except 0D)	PSAL	level 1 (where PRES inf. 7)	1	4	untrustable data	30/11/10
all cycles (except 0D,54A,64A)	PSAL	level 2 (where PRES inf. 7)	1	4	untrustable data	30/11/10

Table 2: Float 6900640. Summary of the modifications of the real-time QC flags and of the interesting or suspicious data.

OW CONFIGURATION	129
CONFIG.MAX_CASTS	250
MAP_USE_PV	1
MAP_USE_PV_ELLIPSE	1
MAP_USE_FACTEUR	1
MAPSCALE_LONGITUDE_LARGE	3.2
MAPSCALE_LONGITUDE_SMALL	0.8
MAPSCALE_LATITUDE_LARGE	2
MAPSCALE_LATITUDE_SMALL	0.5
MAPSCALE_PHI_LARGE	0.1
MAPSCALE_PHI_SMALL	0.02
MAPSCALE_AGE	0.69
MAP_P_EXCLUDE	500
MAP_P_DELTA	250
Reference data base	CTD and ARGO

Table 3: Parameters of the OW method.

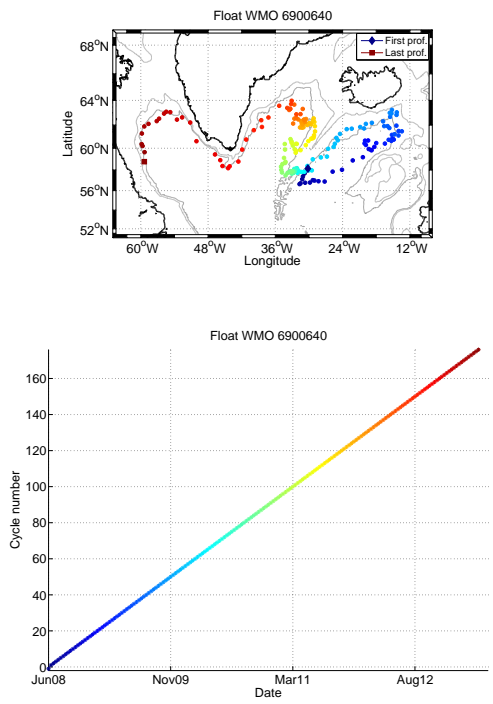


Figure 1: Profiles position and relationship between cycle number, date and color.

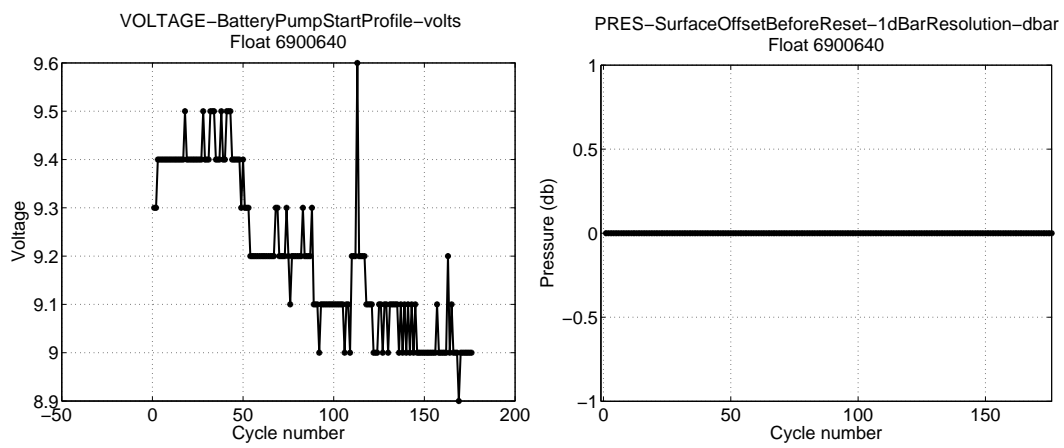


Figure 2: Battery Voltage and Surface Pressure

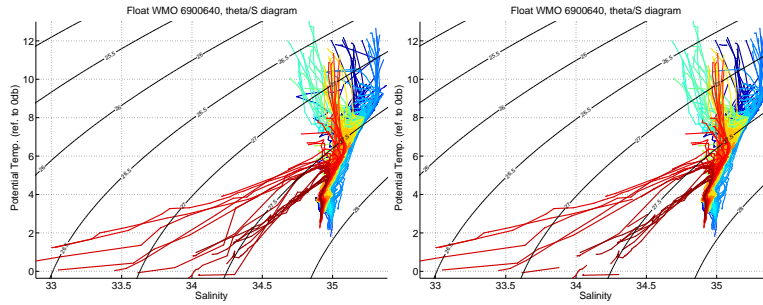


Figure 3: θ/S diagrams. (Left panel) Flags are not taken into account. (Right panel) Quality flags are taken into account.

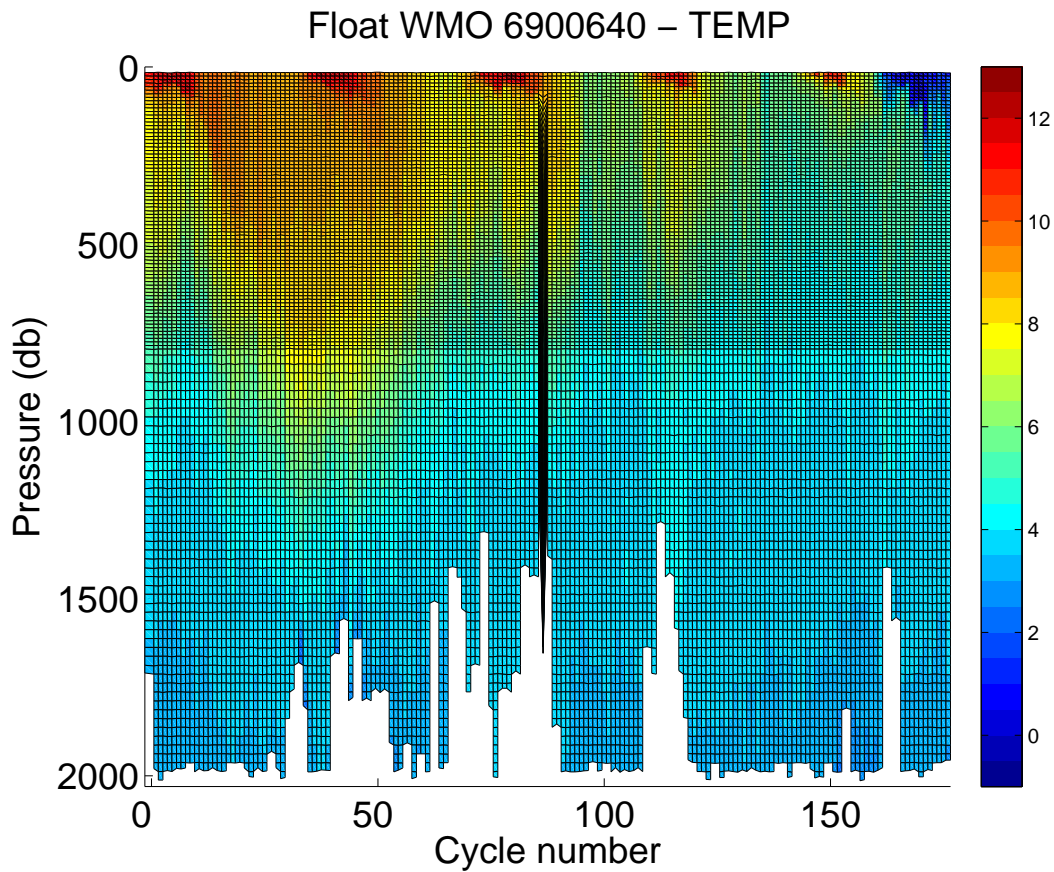


Figure 4: Temperature section along the float trajectory. Quality flags are not taken into account.

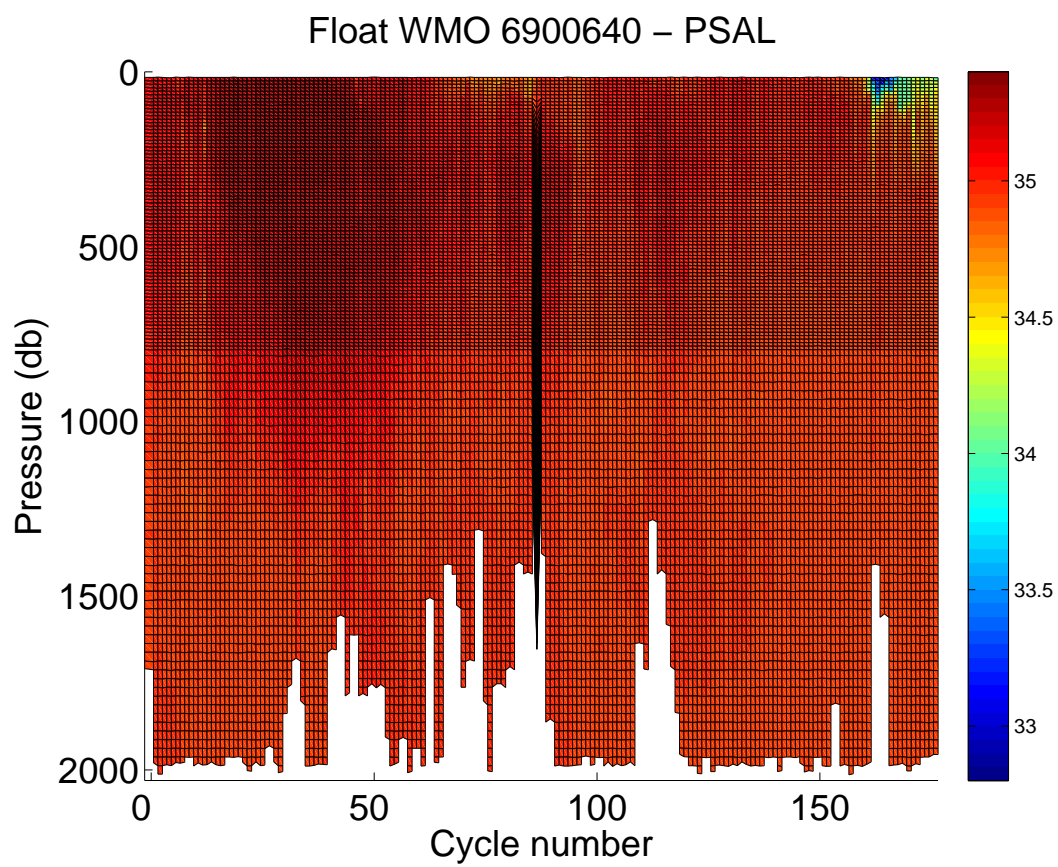


Figure 5: Salinity section along the float trajectory. Quality flags are not taken into account.

Float WMO 6900640 – PRES

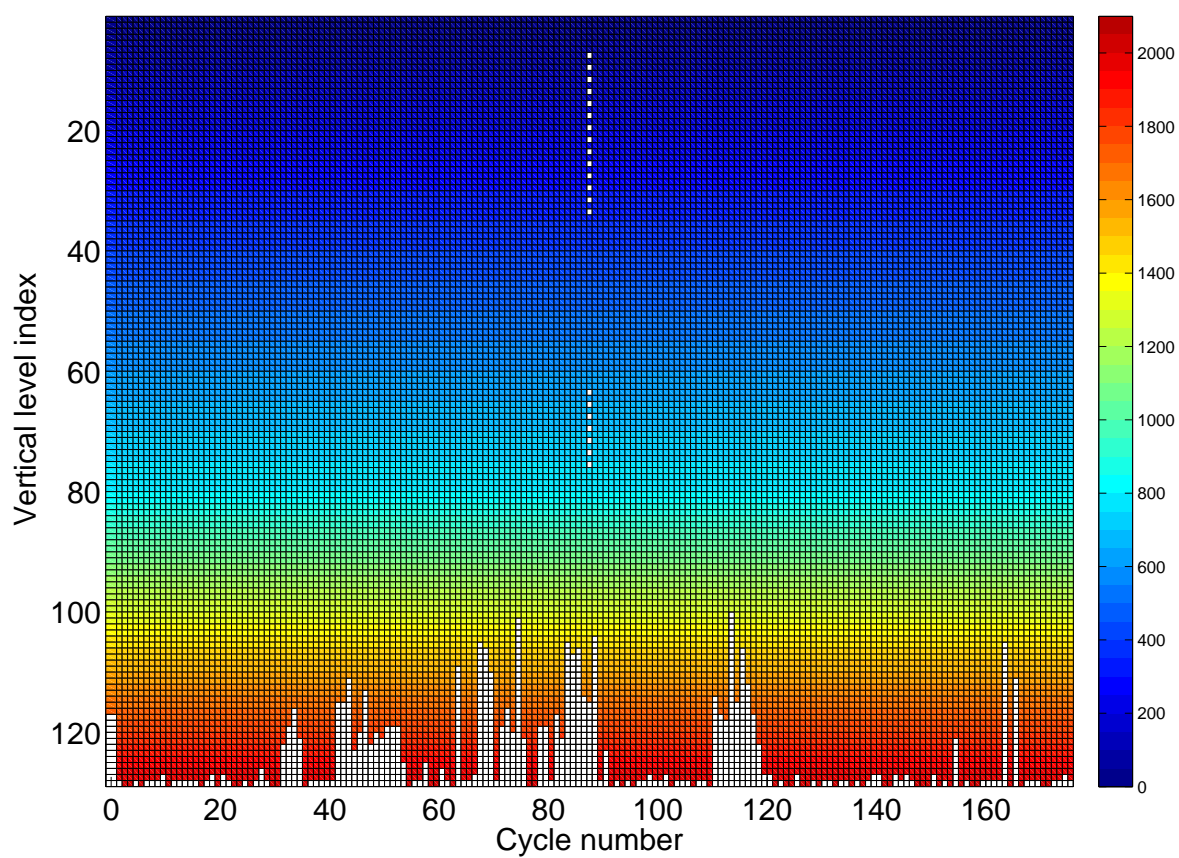


Figure 6: Pression as fonction of cycle number and vertical level index along the float trajectory. Quality flags are taken into account.

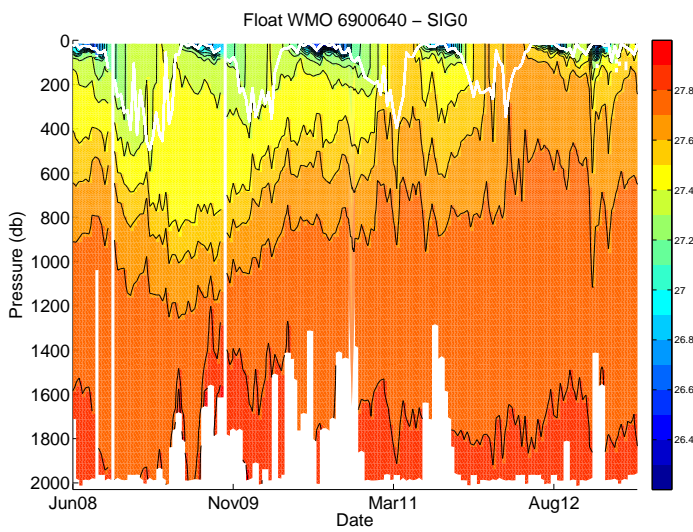
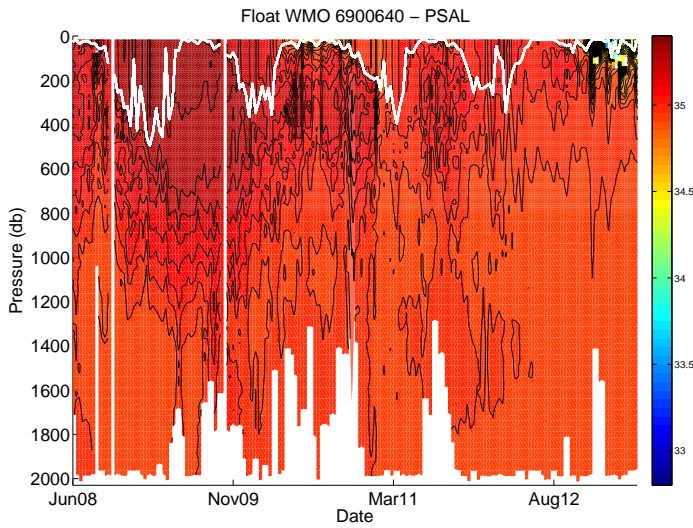
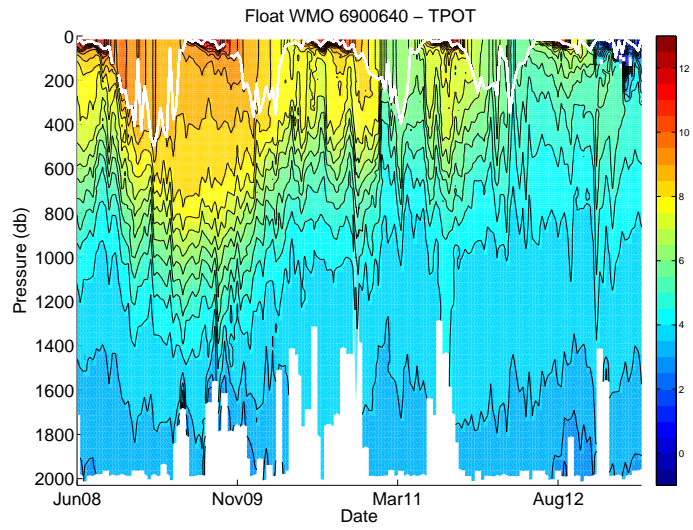


Figure 7: Potential temperature, salinity and potential density sections along the float trajectory (interpolated on standard levels). Quality flags are taken into account.

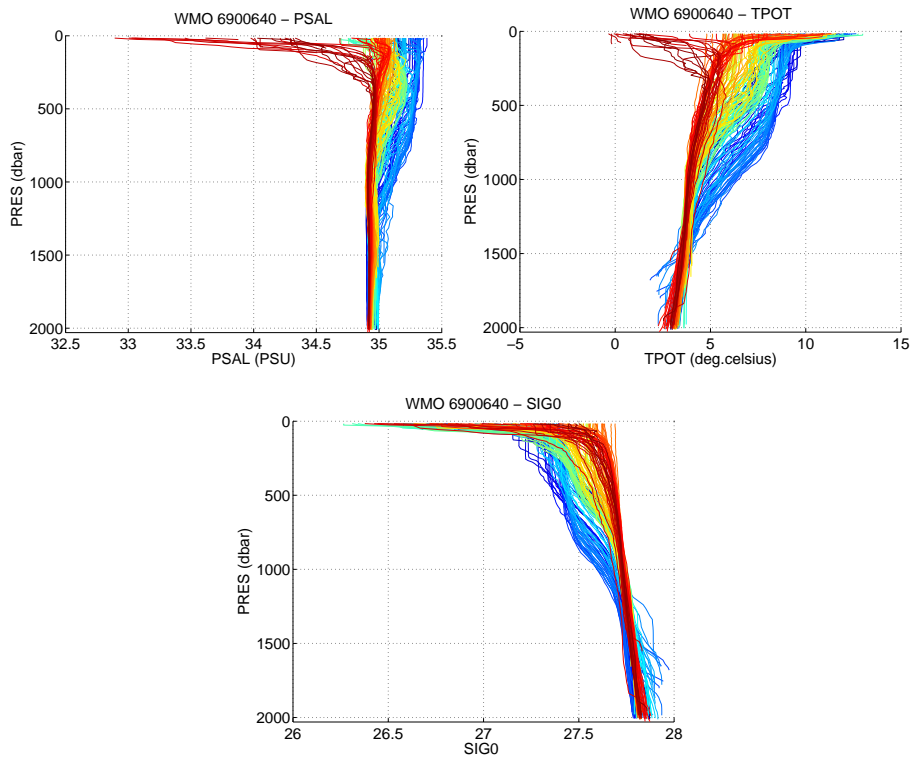


Figure 8: Salinity, Potential Temperature and Potential Density profiles. Quality flags are taken into account.

3 Comparison to the OVIDE 2008 nearest CTD profile

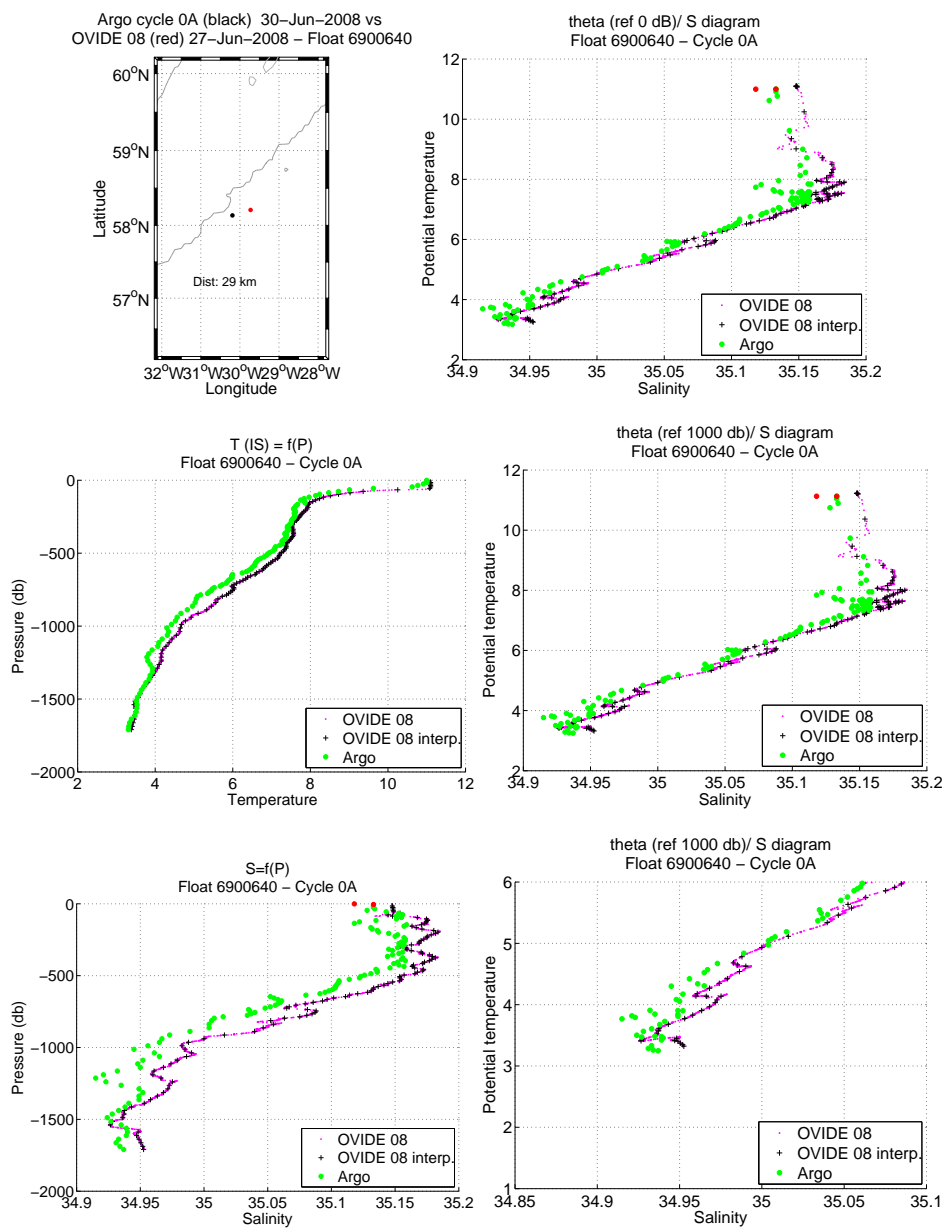


Figure 9: Comparison of the cycle 0A with the nearest CTD profile done after the float deployment.

4 Cycle 7 - Comparison to the nearest historical CTD profiles

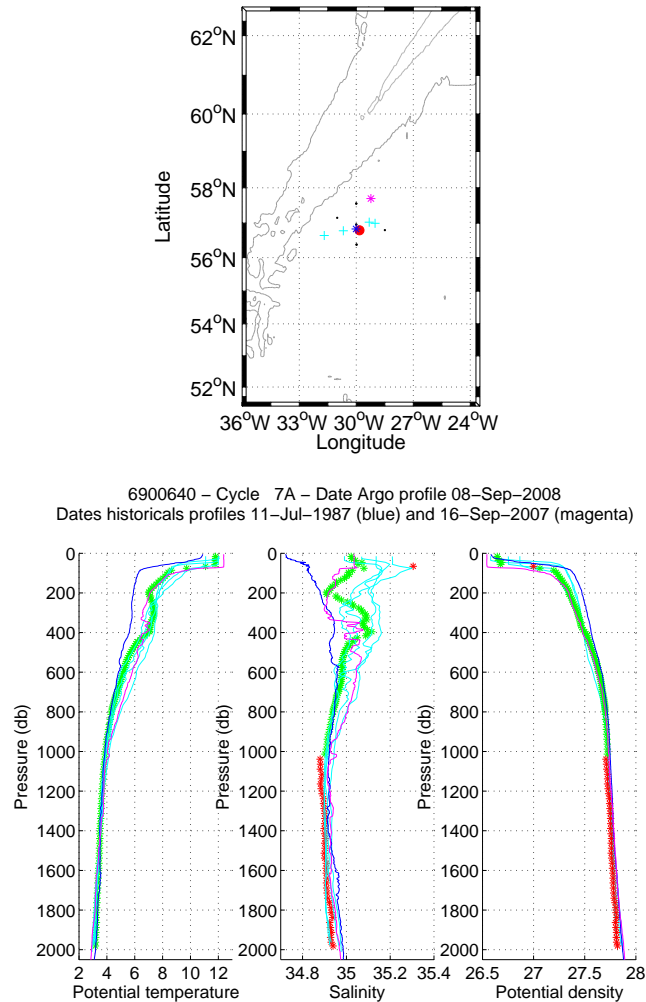


Figure 10: Flotteur 6900640, cycle 7. Upper panel: Position of the analysed CTD profile (red) and of the nearest CTD profiles (black). The nearest CTD profile in time is in magenta while the nearest CTD profile in space is in blue. Lower panels: Temperature, salinity and potential density as function of pressure for the analysed CTD profile (stars) and for the nearest CTD profile in time (magenta line) and for the nearest CTD profile in space (blue line). The color of the analysed CTD profile represents the QC flag (green for a QC=1; blue for a QC=2; orange for a QC=3 and red for a QC=4).

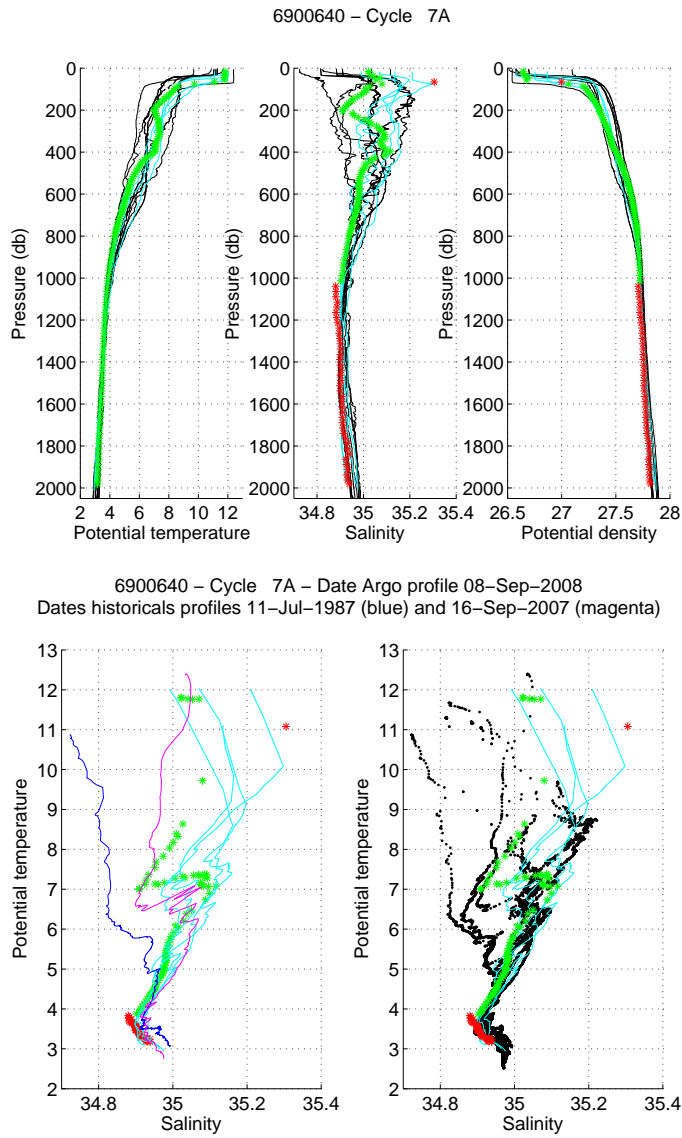


Figure 11: Float 6900640, cycle 7. The analysed CTD profile (stars) is compared to the nearest CTD profiles (black line) and to two specific profiles: the nearest CTD profile in time (magenta) and the nearest CTD profile in space (blue). The color of the analysed CTD profile represents the QC flag (green for a QC=1; blue for a QC=2; orange for a QC=3 and red for a QC=4). (Upper panels) Temperature (left panel), salinity (middle panel) and potential density (right panel) as function of pressure. (Lower panels) θ/S diagrams.

5 Cycle 7A - Comparison to the nearest ARGO profiles

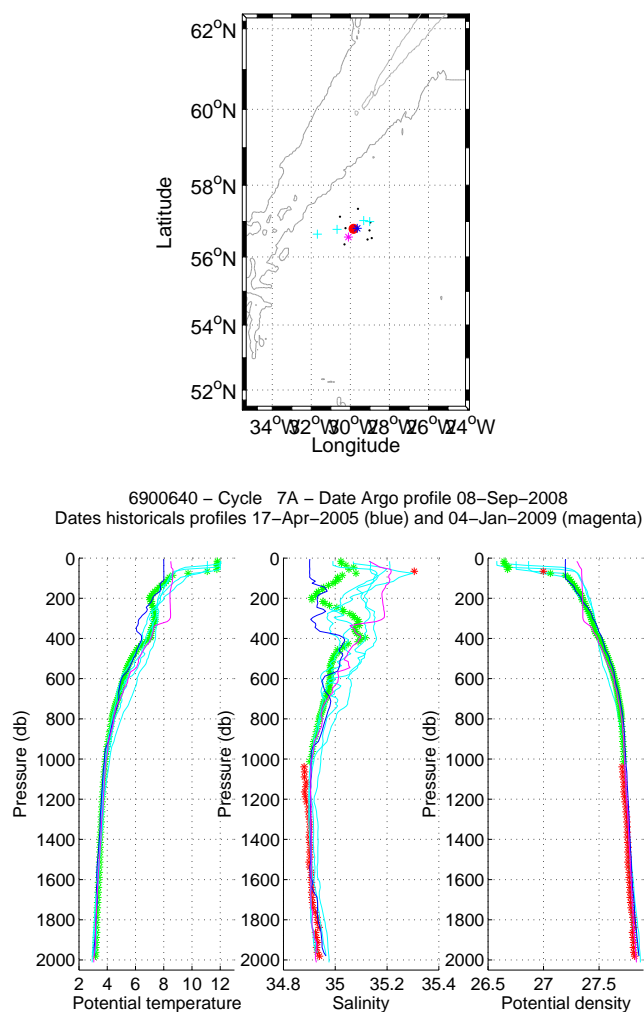


Figure 12: Flotteur 6900640, cycle 7A. Upper panel: Position of the analysed Argo profile (red) and of the nearest Argo profiles (black). The nearest Argo profile in time is in magenta while the nearest CTD profile in space is in blue. Lower panels: Temperature, salinity and potential density as function of pressure for the analysed Argo profile (stars) and for the nearest Argo profile in time (magenta line) and for the nearest Argo profile in space (blue line). The color of the analysed Argo profile represents the QC flag (green for a QC=1; blue for a QC=2; orange for a QC=3 and red for a QC=4).

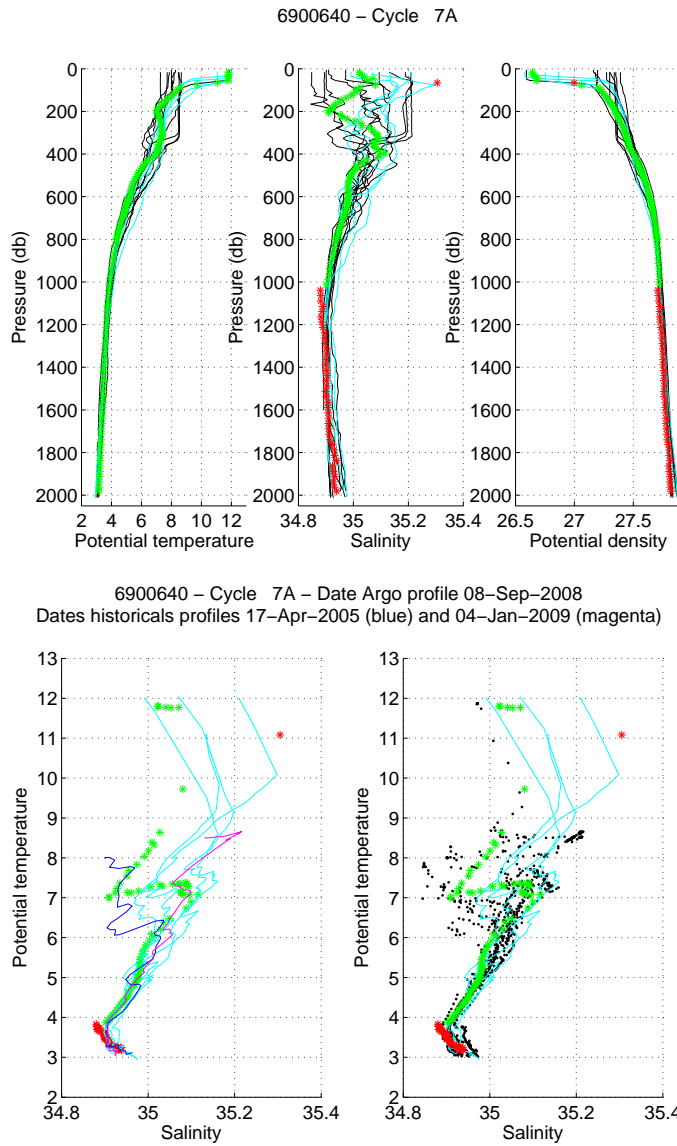


Figure 13: Float 6900640, cycle 7A. The analysed Argo profile (stars) is compared to the nearest Argo profiles (black line) and to two specific profiles: the nearest Argo profile in time (magenta) and the nearest Argo profile in space (blue). The color of the analysed Argo profile represents the QC flag (green for a QC=1; blue for a QC=2; orange for a QC=3 and red for a QC=4). (Upper panels) Temperature (left panel), salinity (middle panel) and potential density (right panel) as function of pressure. (Lower panels) θ/S diagrams.

6 Cycle 12 - Comparison to the nearest historical CTD profiles

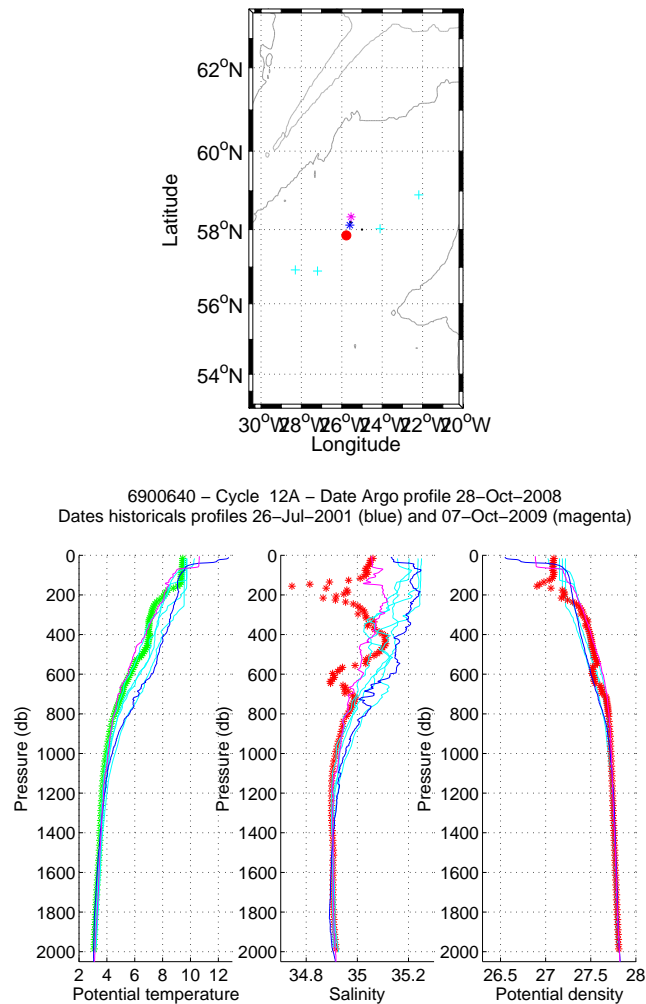
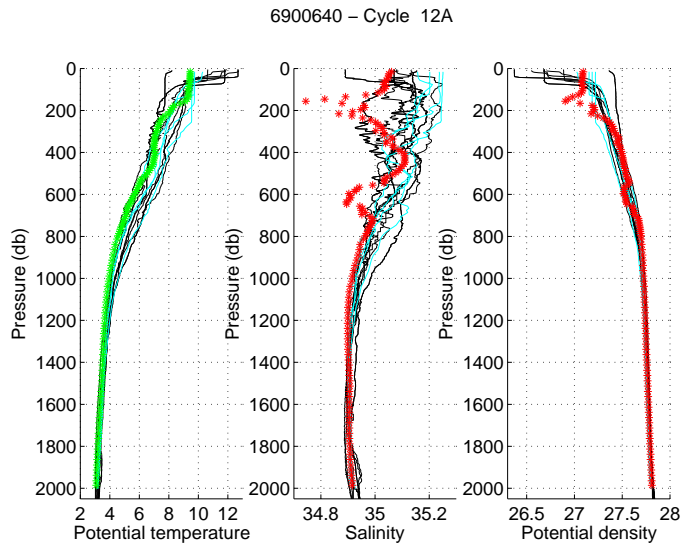


Figure 14: Flotteur 6900640, cycle 12. Upper panel: Position of the analysed CTD profile (red) and of the nearest CTD profiles (black). The nearest CTD profile in time is in magenta while the nearest CTD profile in space is in blue. Lower panels: Temperature, salinity and potential density as function of pressure for the analysed CTD profile (stars) and for the nearest CTD profile in time (magenta line) and for the nearest CTD profile in space (blue line). The color of the analysed CTD profile represents the QC flag (green for a QC=1; blue for a QC=2; orange for a QC=3 and red for a QC=4).



6900640 – Cycle 12A – Date Argo profile 28-Oct-2008
 Dates historical profiles 26-Jul-2001 (blue) and 07-Oct-2009 (magenta)

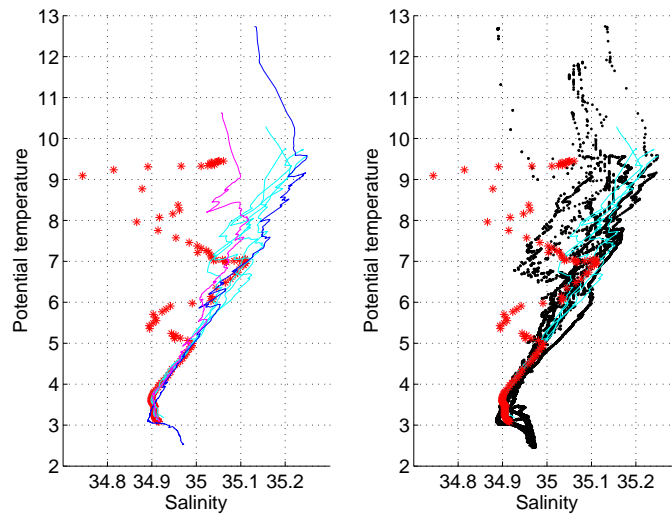


Figure 15: Float 6900640, cycle 12. The analysed CTD profile (stars) is compared to the nearest CTD profiles (black line) and to two specific profiles: the nearest CTD profile in time (magenta) and the nearest CTD profile in space (blue). The color of the analysed CTD profile represents the QC flag (green for a QC=1; blue for a QC=2; orange for a QC=3 and red for a QC=4). (Upper panels) Temperature (left panel), salinity (middle panel) and potential density (right panel) as function of pressure. (Lower panels) θ/S diagrams.

7 Cycle 12A - Comparison to the nearest ARGO profiles

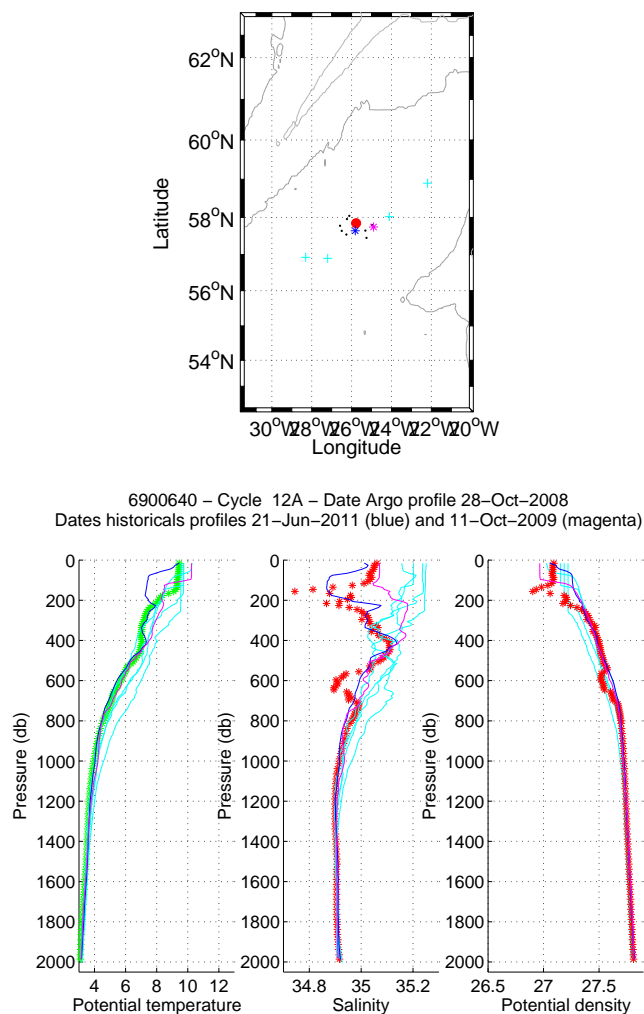


Figure 16: Flotteur 6900640, cycle 12A. Upper panel: Position of the analysed Argo profile (red) and of the nearest Argo profiles (black). The nearest Argo profile in time is in magenta while the nearest CTD profile in space is in blue. Lower panels: Temperature, salinity and potential density as function of pressure for the analysed Argo profile (stars) and for the nearest Argo profile in time (magenta line) and for the nearest Argo profile in space (blue line). The color of the analysed Argo profile represents the QC flag (green for a QC=1; blue for a QC=2; orange for a QC=3 and red for a QC=4).

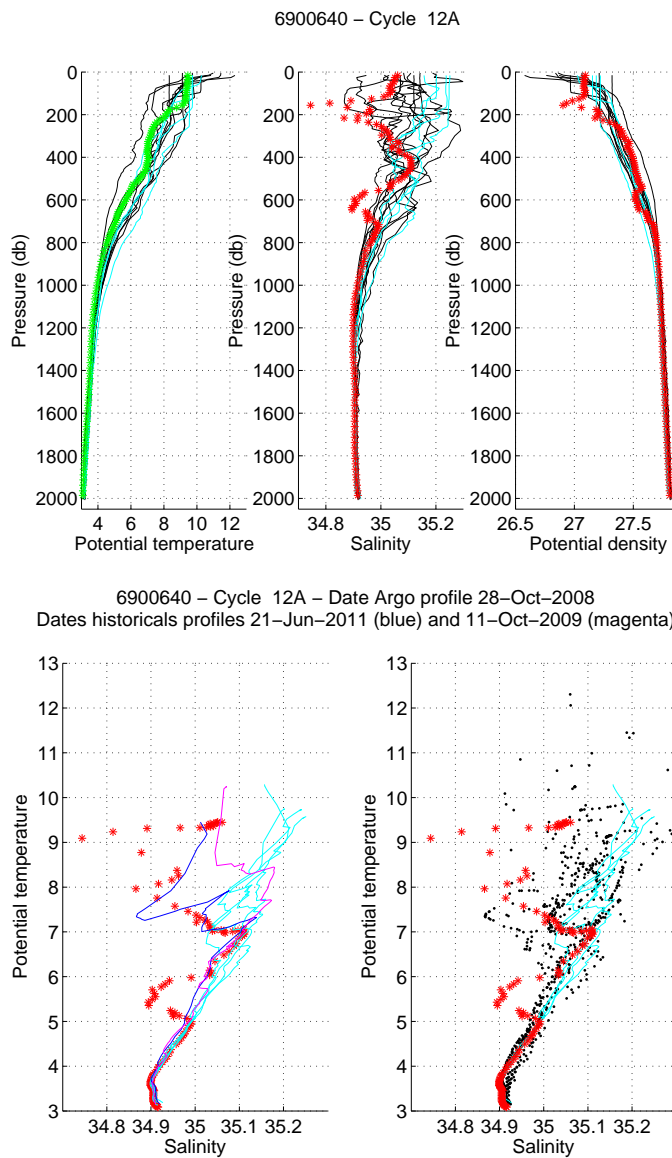


Figure 17: Float 6900640, cycle 12A. The analysed Argo profile (stars) is compared to the nearest Argo profiles (black line) and to two specific profiles: the nearest Argo profile in time (magenta) and the nearest Argo profile in space (blue). The color of the analysed Argo profile represents the QC flag (green for a QC=1; blue for a QC=2; orange for a QC=3 and red for a QC=4). (Upper panels) Temperature (left panel), salinity (middle panel) and potential density (right panel) as function of pressure. (Lower panels) θ/S diagrams.

8 Cycle 40 - Comparison to the nearest historical CTD profiles

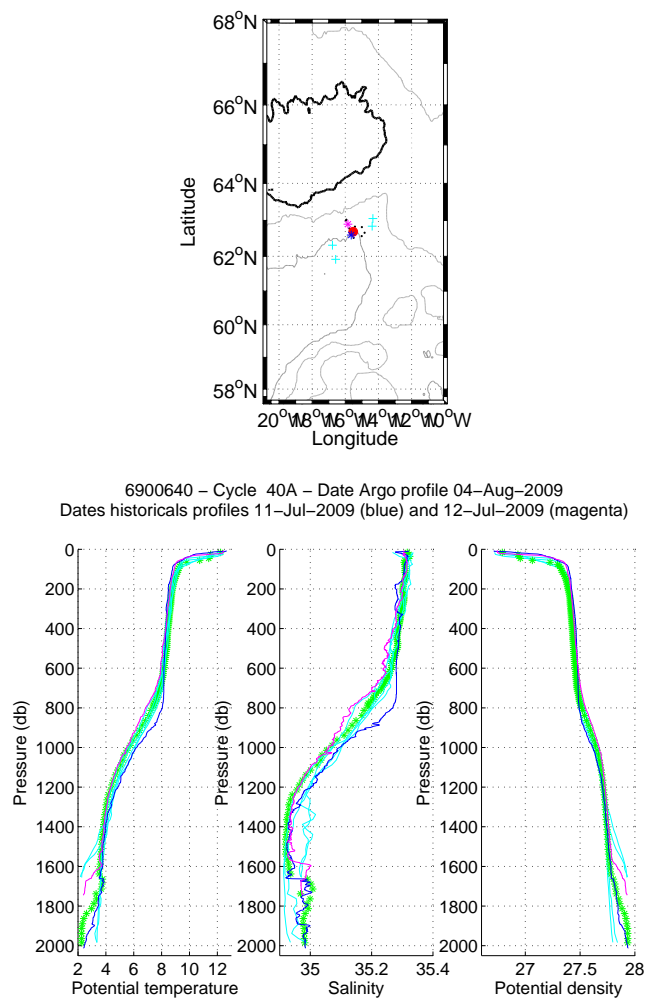


Figure 18: Flotteur 6900640, cycle 40. Upper panel: Position of the analysed CTD profile (red) and of the nearest CTD profiles (black). The nearest CTD profile in time is in magenta while the nearest CTD profile in space is in blue. Lower panels: Temperature, salinity and potential density as function of pressure for the analysed CTD profile (stars) and for the nearest CTD profile in time (magenta line) and for the nearest CTD profile in space (blue line). The color of the analysed CTD profile represents the QC flag (green for a QC=1; blue for a QC=2; orange for a QC=3 and red for a QC=4).

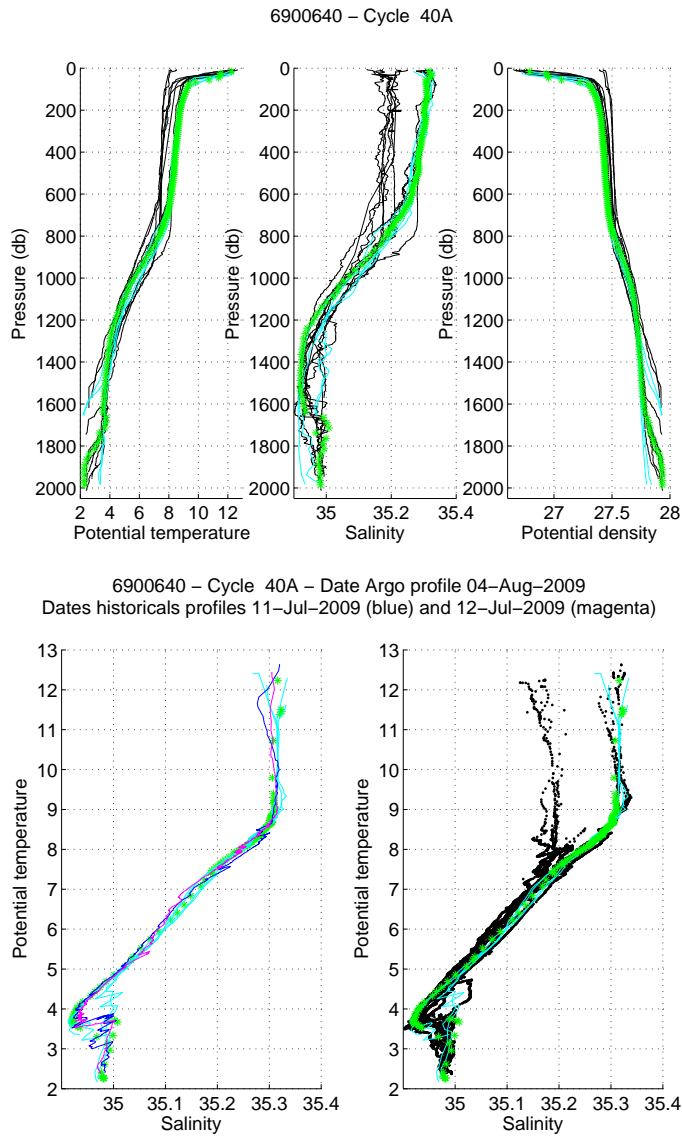


Figure 19: Float 6900640, cycle 40. The analysed CTD profile (stars) is compared to the nearest CTD profiles (black line) and to two specific profiles: the nearest CTD profile in time (magenta) and the nearest CTD profile in space (blue). The color of the analysed CTD profile represents the QC flag (green for a QC=1; blue for a QC=2; orange for a QC=3 and red for a QC=4). (Upper panels) Temperature (left panel), salinity (middle panel) and potential density (right panel) as function of pressure. (Lower panels) θ/S diagrams.

9 Cycle 40A - Comparison to the nearest ARGO profiles

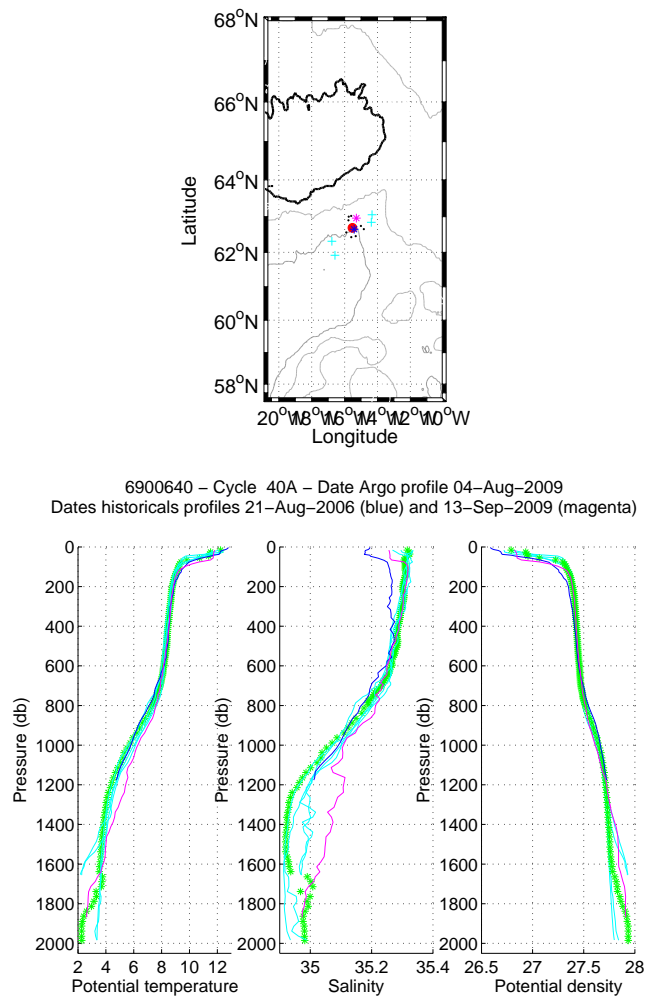


Figure 20: Flotteur 6900640, cycle 40A. Upper panel: Position of the analysed Argo profile (red) and of the nearest Argo profiles (black). The nearest Argo profile in time is in magenta while the nearest CTD profile in space is in blue. Lower panels: Temperature, salinity and potential density as function of pressure for the analysed Argo profile (stars) and for the nearest Argo profile in time (magenta line) and for the nearest Argo profile in space (blue line). The color of the analysed Argo profile represents the QC flag (green for a QC=1; blue for a QC=2; orange for a QC=3 and red for a QC=4).

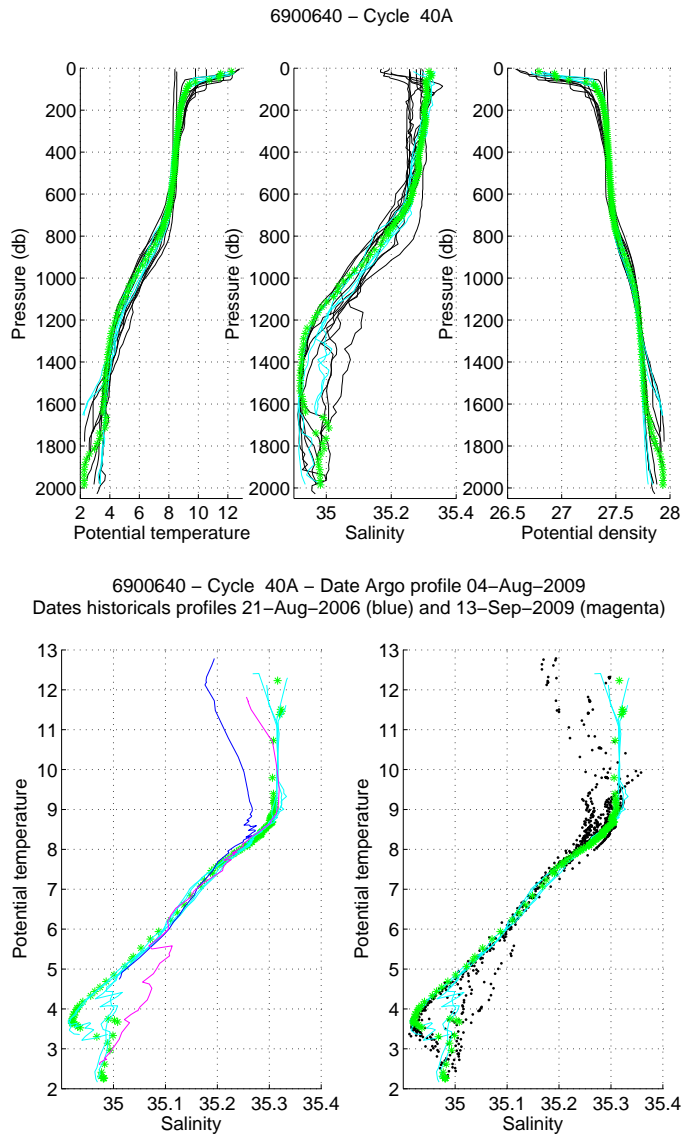


Figure 21: Float 6900640, cycle 40A. The analysed Argo profile (stars) is compared to the nearest Argo profiles (black line) and to two specific profiles: the nearest Argo profile in time (magenta) and the nearest Argo profile in space (blue). The color of the analysed Argo profile represents the QC flag (green for a QC=1; blue for a QC=2; orange for a QC=3 and red for a QC=4). (Upper panels) Temperature (left panel), salinity (middle panel) and potential density (right panel) as function of pressure. (Lower panels) θ/S diagrams.

10 Cycle 41 - Comparison to the nearest historical CTD profiles

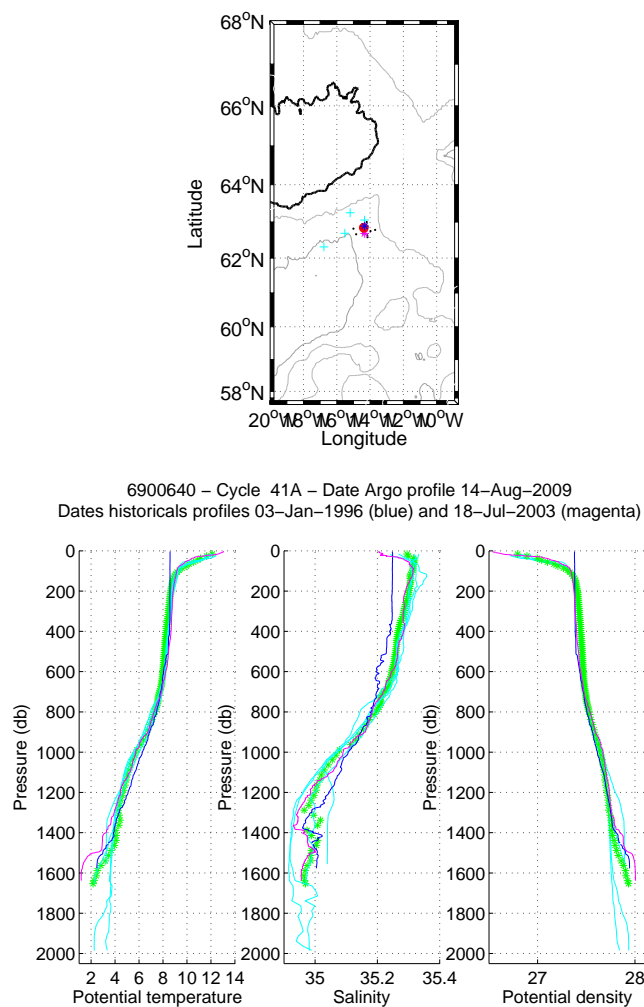


Figure 22: Flotteur 6900640, cycle 41. Upper panel: Position of the analysed CTD profile (red) and of the nearest CTD profiles (black). The nearest CTD profile in time is in magenta while the nearest CTD profile in space is in blue. Lower panels: Temperature, salinity and potential density as function of pressure for the analysed CTD profile (stars) and for the nearest CTD profile in time (magenta line) and for the nearest CTD profile in space (blue line). The color of the analysed CTD profile represents the QC flag (green for a QC=1; blue for a QC=2; orange for a QC=3 and red for a QC=4).

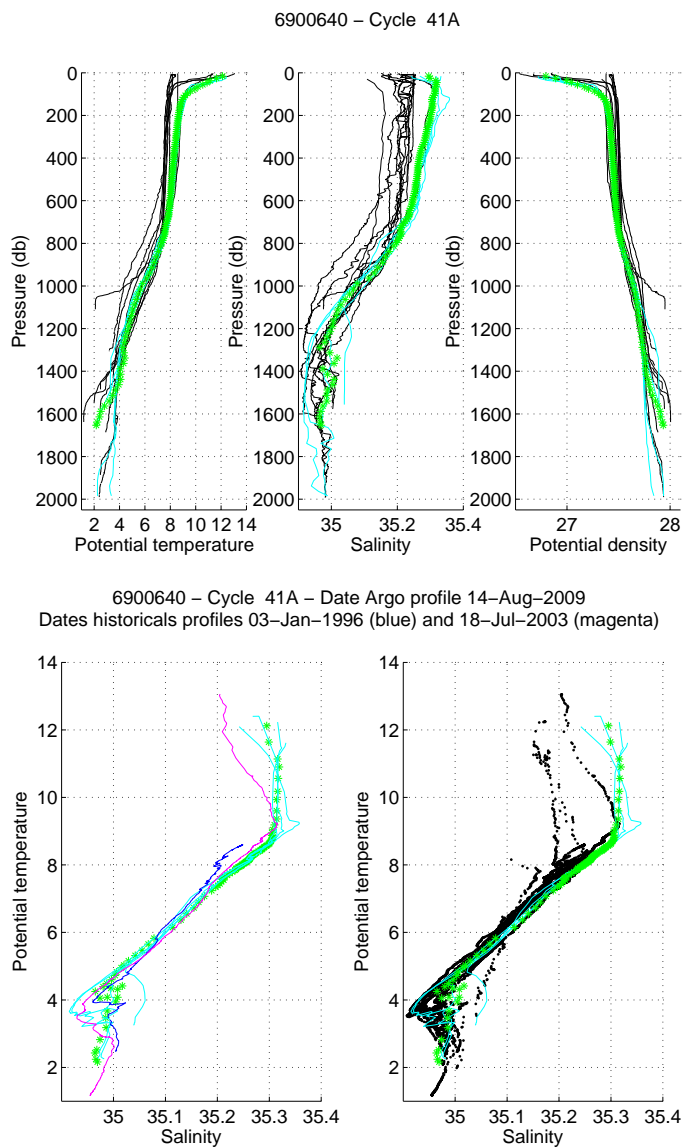


Figure 23: Float 6900640, cycle 41. The analysed CTD profile (stars) is compared to the nearest CTD profiles (black line) and to two specific profiles: the nearest CTD profile in time (magenta) and the nearest CTD profile in space (blue). The color of the analysed CTD profile represents the QC flag (green for a QC=1; blue for a QC=2; orange for a QC=3 and red for a QC=4). (Upper panels) Temperature (left panel), salinity (middle panel) and potential density (right panel) as function of pressure. (Lower panels) θ/S diagrams.

11 Cycle 41A - Comparison to the nearest ARGO profiles

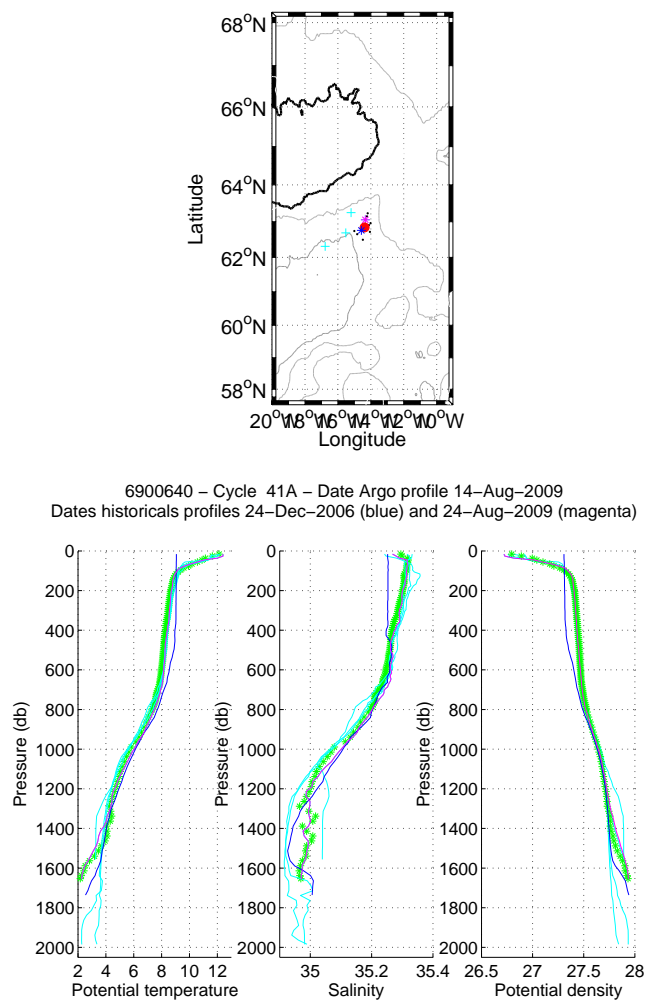


Figure 24: Flotteur 6900640, cycle 41A. Upper panel: Position of the analysed Argo profile (red) and of the nearest Argo profiles (black). The nearest Argo profile in time is in magenta while the nearest CTD profile in space is in blue. Lower panels: Temperature, salinity and potential density as function of pressure for the analysed Argo profile (stars) and for the nearest Argo profile in time (magenta line) and for the nearest Argo profile in space (blue line). The color of the analysed Argo profile represents the QC flag (green for a QC=1; blue for a QC=2; orange for a QC=3 and red for a QC=4).

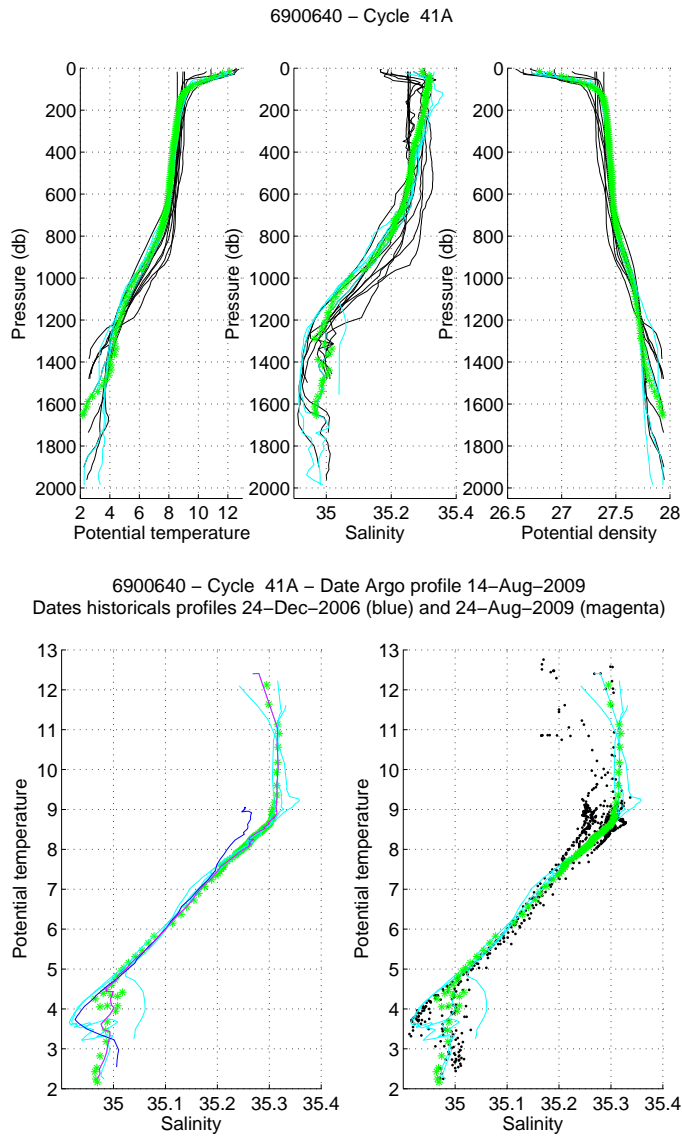


Figure 25: Float 6900640, cycle 41A. The analysed Argo profile (stars) is compared to the nearest Argo profiles (black line) and to two specific profiles: the nearest Argo profile in time (magenta) and the nearest Argo profile in space (blue). The color of the analysed Argo profile represents the QC flag (green for a QC=1; blue for a QC=2; orange for a QC=3 and red for a QC=4). (Upper panels) Temperature (left panel), salinity (middle panel) and potential density (right panel) as function of pressure. (Lower panels) θ/S diagrams.

12 Cycle 47 - Comparison to the nearest historical CTD profiles

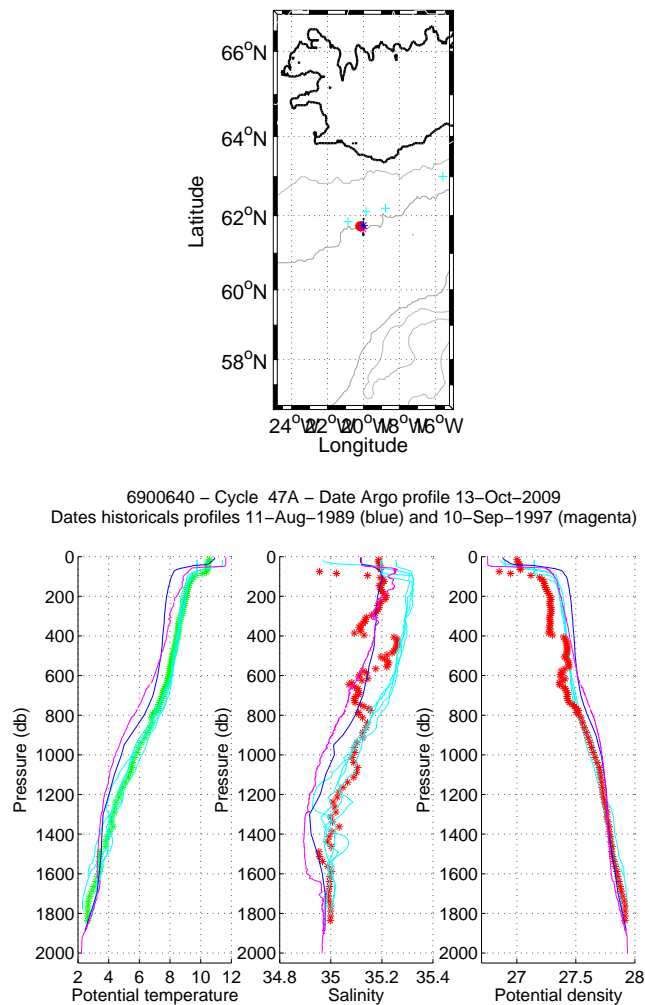


Figure 26: Flotteur 6900640, cycle 47. Upper panel: Position of the analysed CTD profile (red) and of the nearest CTD profiles (black). The nearest CTD profile in time is in magenta while the nearest CTD profile in space is in blue. Lower panels: Temperature, salinity and potential density as function of pressure for the analysed CTD profile (stars) and for the nearest CTD profile in time (magenta line) and for the nearest CTD profile in space (blue line). The color of the analysed CTD profile represents the QC flag (green for a QC=1; blue for a QC=2; orange for a QC=3 and red for a QC=4).

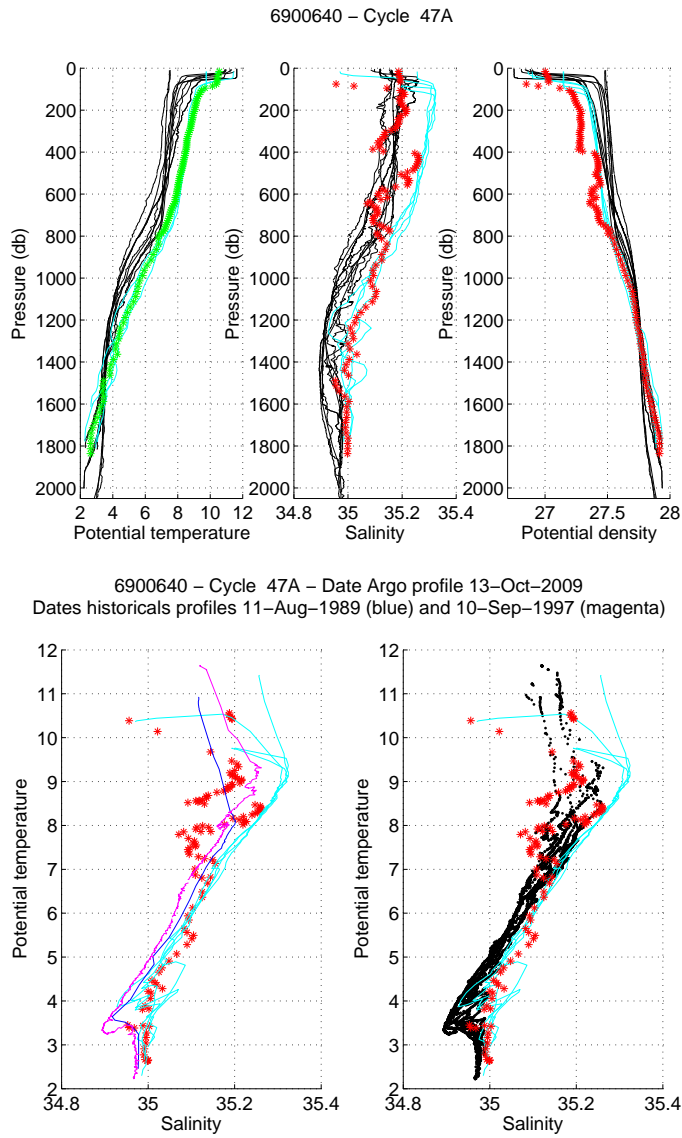


Figure 27: Float 6900640, cycle 47. The analysed CTD profile (stars) is compared to the nearest CTD profiles (black line) and to two specific profiles: the nearest CTD profile in time (magenta) and the nearest CTD profile in space (blue). The color of the analysed CTD profile represents the QC flag (green for a QC=1; blue for a QC=2; orange for a QC=3 and red for a QC=4). (Upper panels) Temperature (left panel), salinity (middle panel) and potential density (right panel) as function of pressure. (Lower panels) θ/S diagrams.

13 Cycle 47A - Comparison to the nearest ARGO profiles

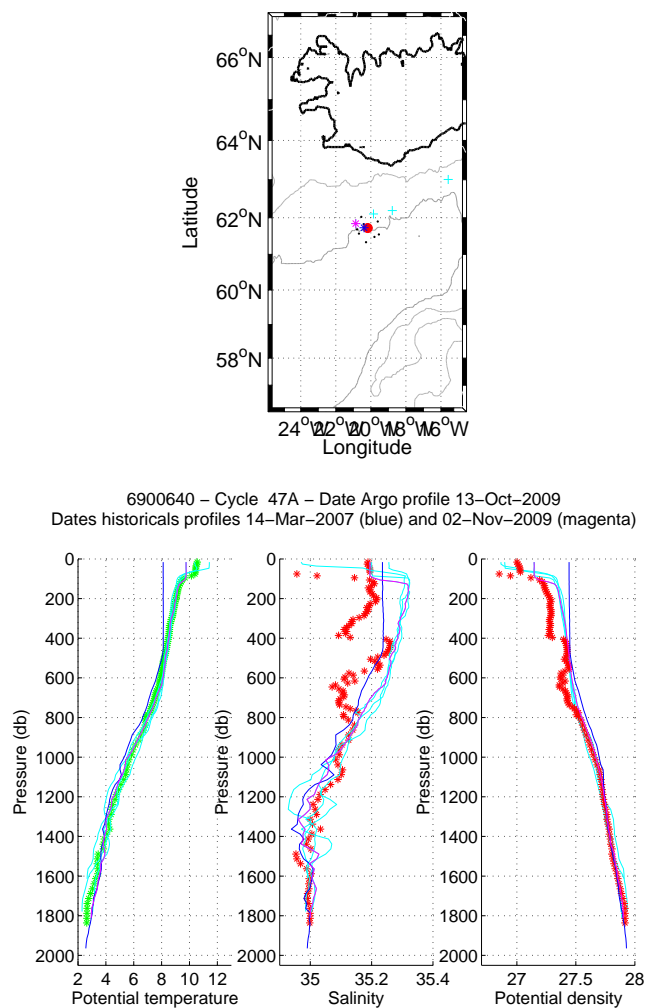


Figure 28: Flotteur 6900640, cycle 47A. Upper panel: Position of the analysed Argo profile (red) and of the nearest Argo profiles (black). The nearest Argo profile in time is in magenta while the nearest CTD profile in space is in blue. Lower panels: Temperature, salinity and potential density as function of pressure for the analysed Argo profile (stars) and for the nearest Argo profile in time (magenta line) and for the nearest Argo profile in space (blue line). The color of the analysed Argo profile represents the QC flag (green for a QC=1; blue for a QC=2; orange for a QC=3 and red for a QC=4).

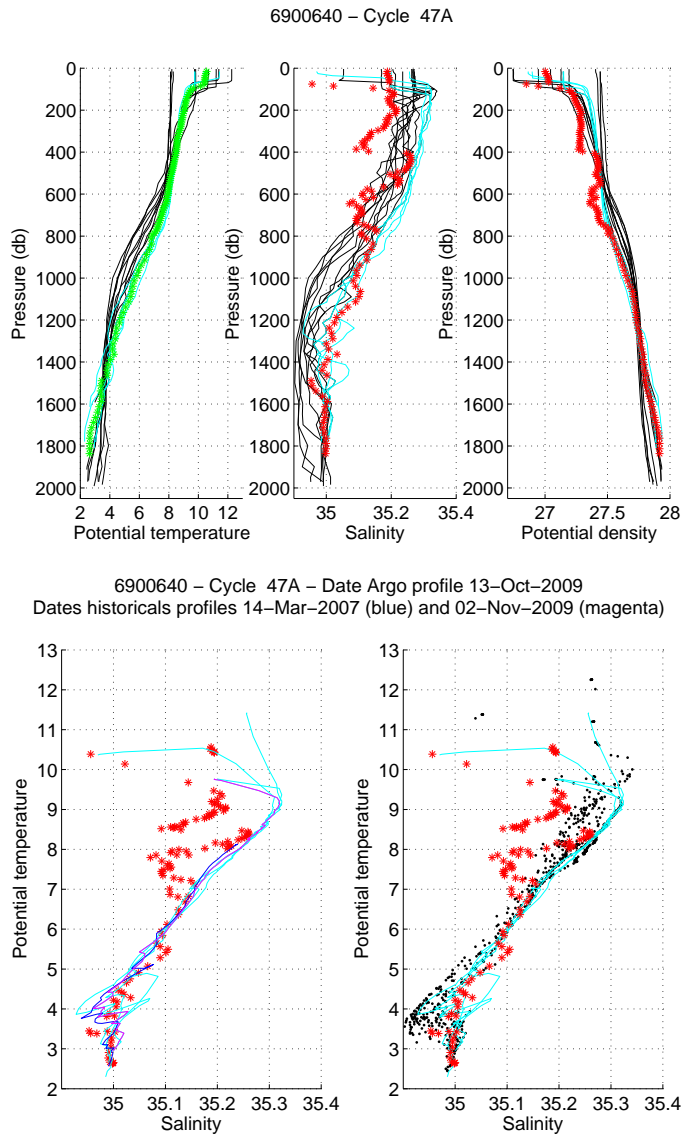


Figure 29: Float 6900640, cycle 47A. The analysed Argo profile (stars) is compared to the nearest Argo profiles (black line) and to two specific profiles: the nearest Argo profile in time (magenta) and the nearest Argo profile in space (blue). The color of the analysed Argo profile represents the QC flag (green for a QC=1; blue for a QC=2; orange for a QC=3 and red for a QC=4). (Upper panels) Temperature (left panel), salinity (middle panel) and potential density (right panel) as function of pressure. (Lower panels) θ/S diagrams.

14 OW method, CONFIGURATION # 129

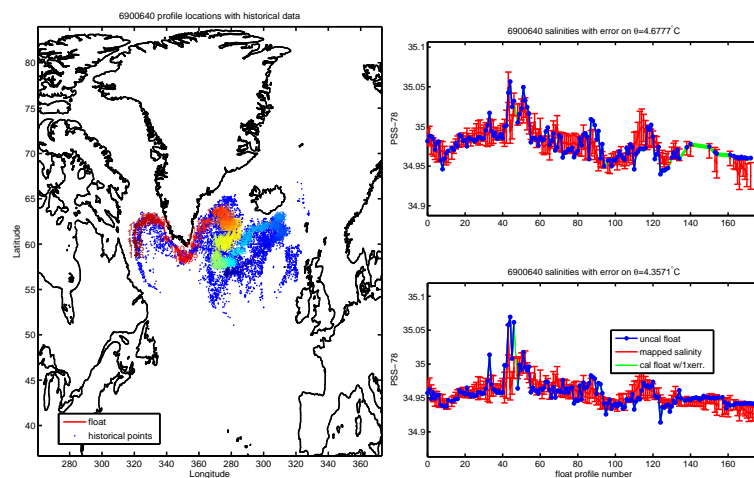


Figure 30: Figures from the OW method. (Left) Position of the historical and float data. (Right) Comparison, on various θ levels, between the float data and the historical data interpolated at the float position.

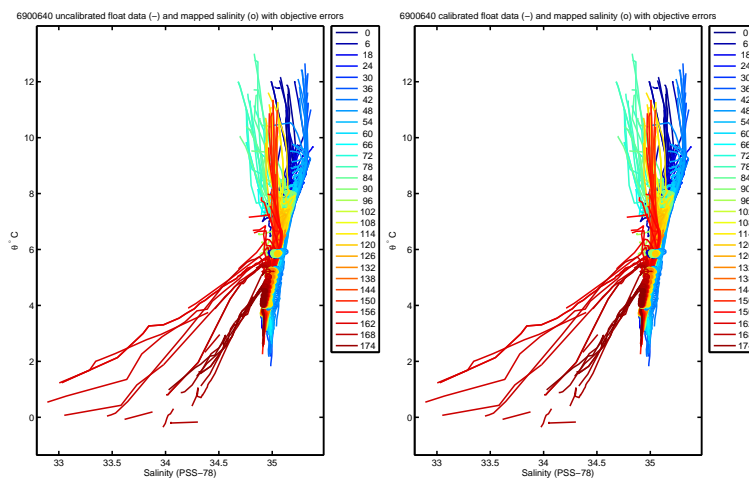


Figure 31: Figures from the OW method. Comparison of the θ/S diagram of the float with the historical database. (left) raw data; (right) corrected data using the OW correction.

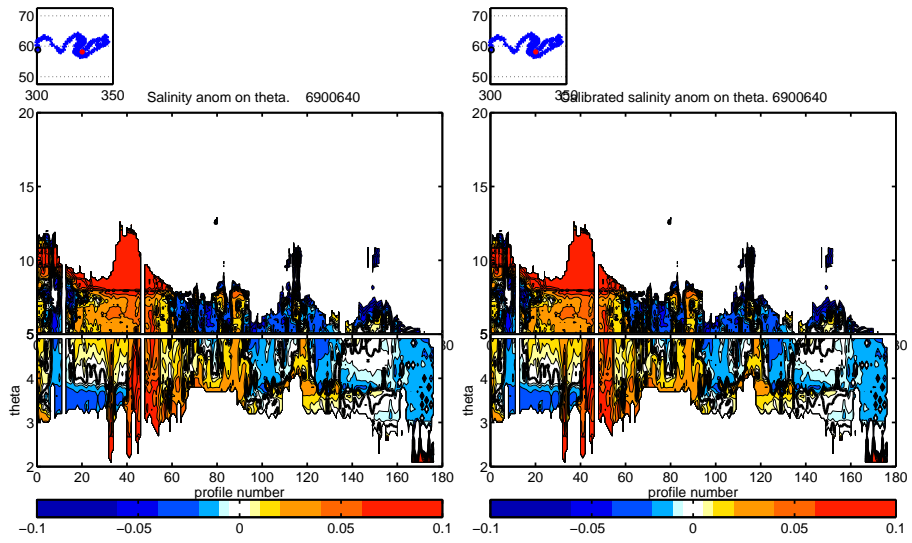


Figure 32: Figures from the OW method. Salinity anomaly:(left) raw data; (right) corrected data using the OW correction.

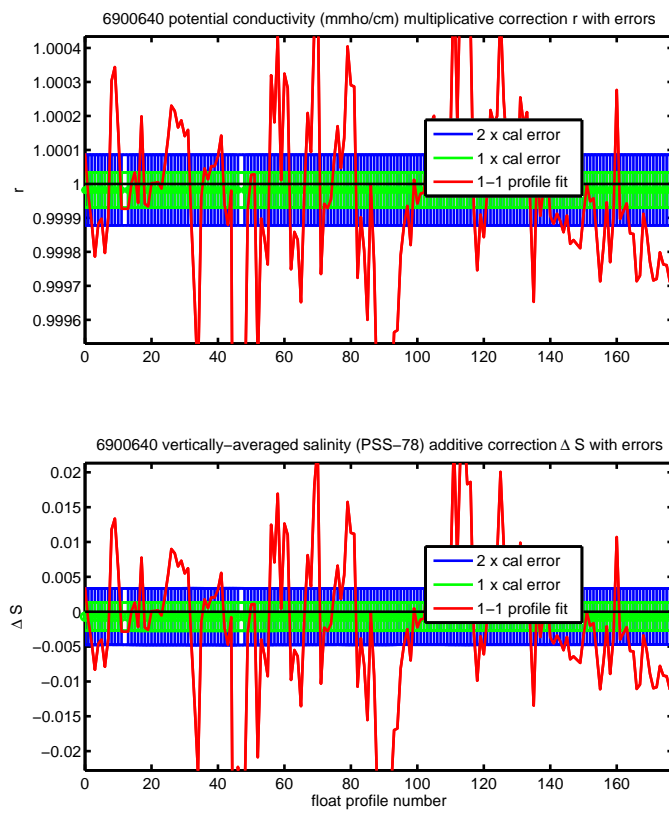


Figure 33: Correction proposed by the OW method.

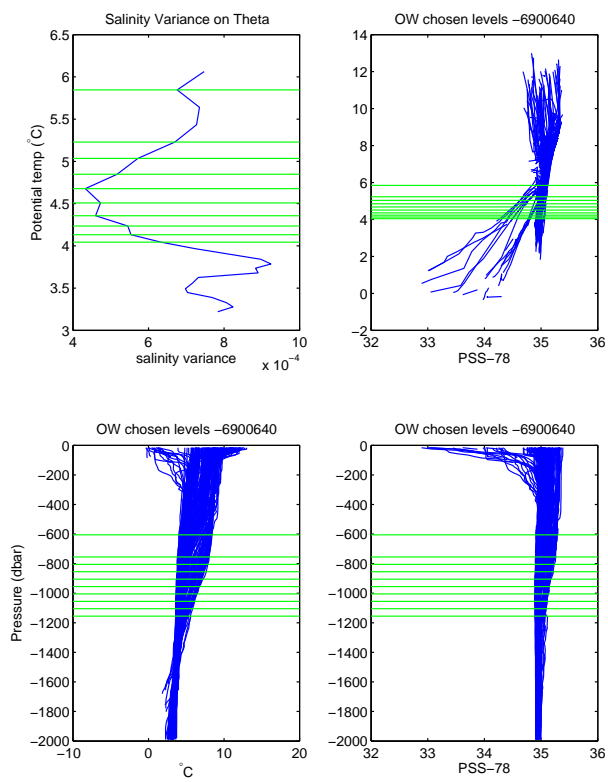


Figure 34: Chosed levels by the OW method.