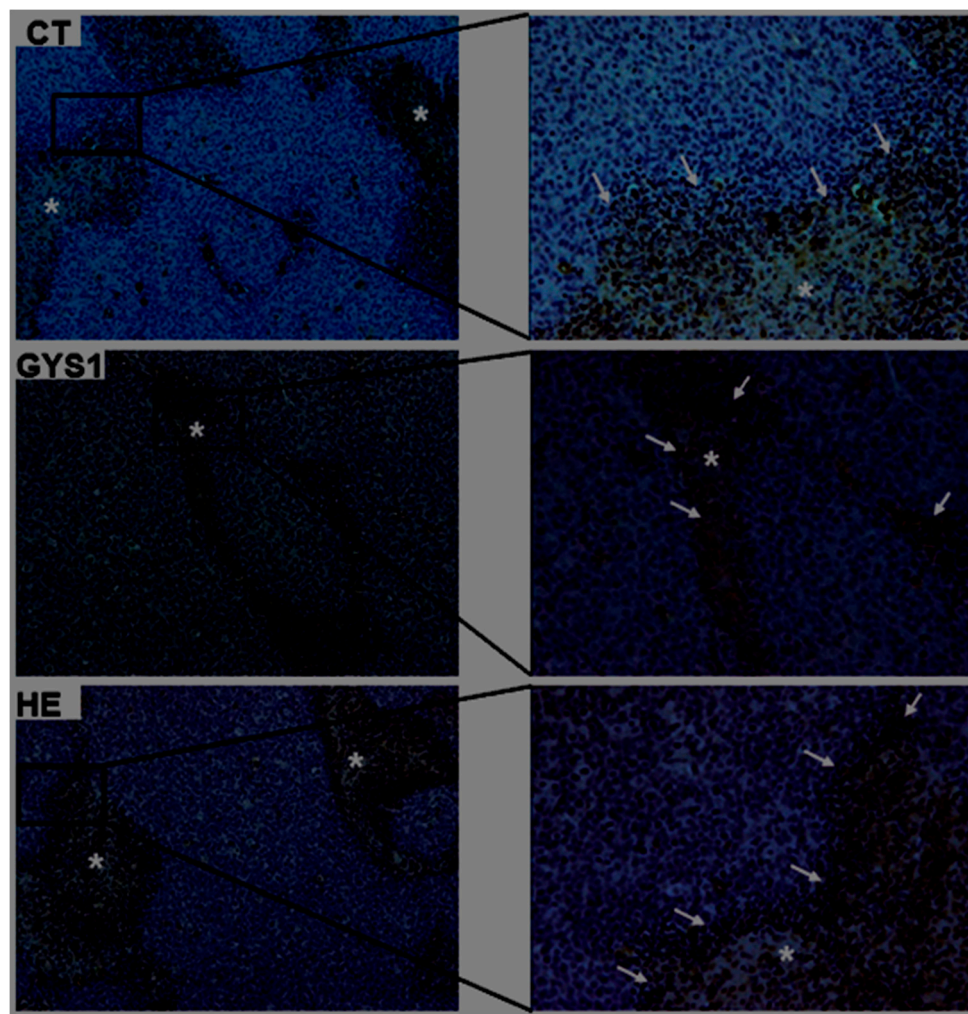


## Supplementary Materials: Anti-Metastatic Properties of a Marine Bacterial Exopolysaccharide-Based Derivative Designed to Mimic Glycosaminoglycans

Dominique Heymann, Carmen Ruiz-Velasco, Julie Chesneau, Jacqueline Ratiskol, Corinne Sinquin and Sylvia Collic-Jouault



**Figure S1.** Oversulfated exopolysaccharide (OS-EPS) derivative did not induce pro-apoptotic effect compared to heparin and control group. Apoptotic cells in primary bone tumor were determined using the *in situ* cell death detection kit (Roche Diagnostics), based on the terminal-deoxynucleotidyl transferase-mediated dUTP nick-end labeling (TUNEL) method. Tumor masses were characterized by peripheral proliferation area centered by necrotic foci (\*). Apoptotic cancer cells were observed at the border between proliferation and necrotic areas (arrow). Original magnification:  $\times 100$  (right panels);  $\times 200$  (left panels).