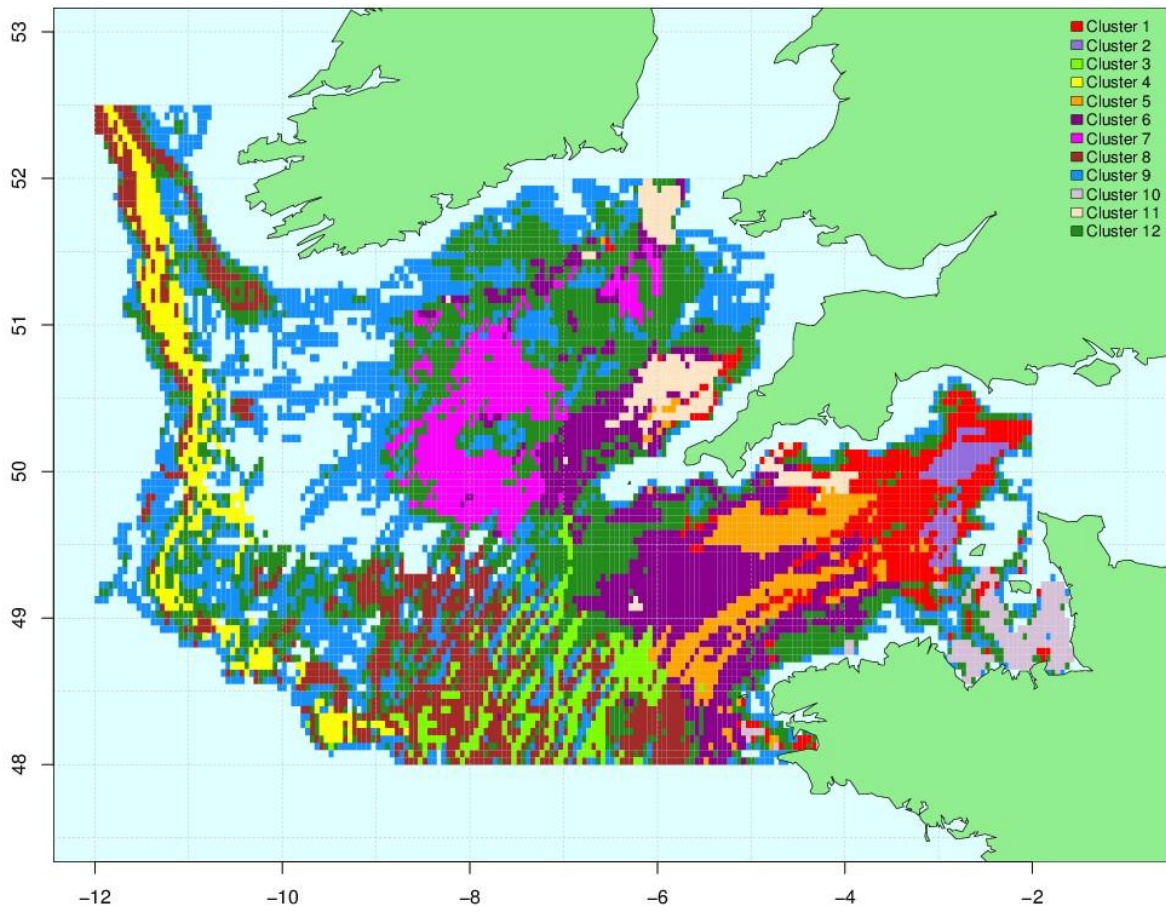


7 Figure S2. Cluster map (12 clusters, average 2010-2012). The same colour code was assigned to
8 each 3'*3' square belonging to the same cluster.



11 Characterization of clusters in terms of species assemblage (12 clusters, average 2010-2012).

12 Species names in bold correspond to Indval species. Only 80% of the landed species are

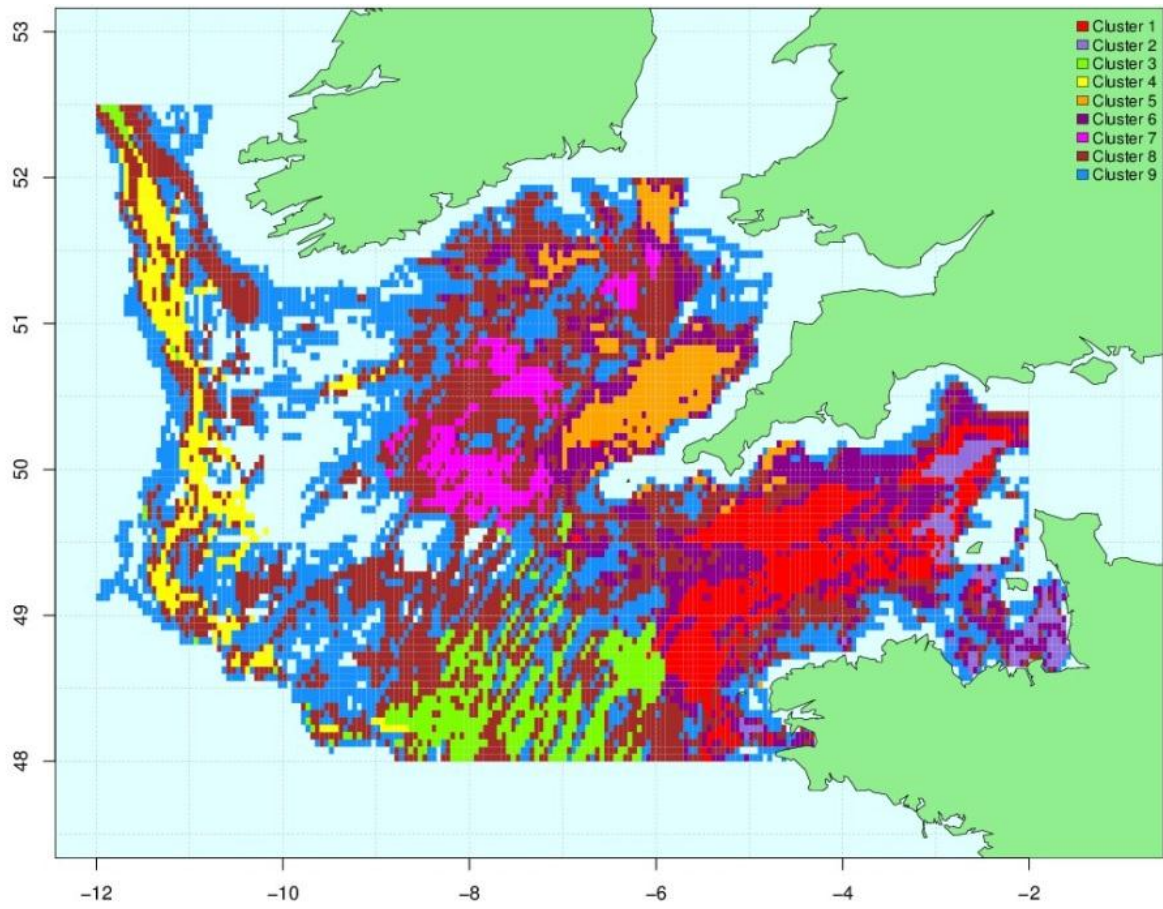
13 presented.

14

Cluster	Nb of species	FAO code	Species	% Lands	Cluster	Nb of species	FAO code	Species	% Lands
1	29	OTH	Others	16.1	7	26	MNZ	Monkfishes	17.2
		BIB	Pouting (Bib)	10.3			COD	Atlantic cod	15.3
		GUR	Red gurnard	9.1			HAD	Haddock	15.2
		WHG	Whiting	7.6			NEP	Norway lobster	14.0
		HAD	Haddock	7.4			OTH	Others	8.8
		JAX	Jack and horse mackerel	7.3			LEZ	Megrimms	8.8
		MNZ	Monkfishes	6.3	8	28	MNZ	Monkfishes	32.2
		QSC	Queen scallop	5.4			LEZ	Megrimms	11.5
		CTC	Common cuttlefish	5.3			RJN	Cuckoo ray	9.2
SYC	Small-spotted catshark	4.8	HKE	European hake	8.5				
2	29	OTH	Others	14.1	HAD	Haddock	8.0		
		GUR	Red gurnard	12.0	JAX	Jack and horse mackerel	7.5		
		BIB	Pouting (Bib)	11.8	OTH	Others	6.3		
		CTC	Common cuttlefish	10.6	9	29	HKE	European hake	24.2
		WHG	Whiting	8.7			JAX	Jack and horse mackerel	17.7
		SYC	Small-spotted catshark	7.4			MNZ	Monkfishes	13.1
		QSC	Queen scallop	5.9			HAD	Haddock	9.8
		MNZ	Monkfishes	4.6			OTH	Others	9.1
HAD	Haddock	4.4	LEZ	Megrimms			5.3		
3	28	MNZ	Monkfishes	33.5	10	29	QSC	Queen scallop	27.3
		HAD	Haddock	13.5			SCE	Great atlantic scallop	17.7
		RJN	Cuckoo ray	12.3			GKL	Common european bittersweet	14.8
		LEZ	Megrimms	8.7			OTH	Others	11.4
		CTC	Common cuttlefish	7.8			SCR	Spinous spider crab	10.3
		OTH	Others	6.9			HAD	Haddock	28.3
4	29	JAX	Jack and horse mackerel	59.8	11	28	WHG	Whiting	17.9
		HKE	European hake	18.7			COD	Atlantic cod	8.3
		MAC	Atlantic mackerel	14.1			RJM	Spoteed ray	7.9
5	28	MNZ	Monkfishes	15.9			MNZ	Monkfishes	7.4
		HAD	Haddock	12.2			OTH	Others	6.7
		CTC	Common cuttlefish	9.3			SQZ	Inshore squids	3.1
		WHG	Whiting	8.7	12	29	JAX	Jack and horse mackerel	17.9
		OTH	Others	8.3			HAD	Haddock	17.7
		GUR	Red gurnard	7.1			MNZ	Monkfishes	12.5
		BIB	Pouting (Bib)	6.1			OTH	Others	9.5
		SQZ	Inshore squids	4.7			COD	Atlantic cod	7.6
JAX	Jack and horse mackerel	4.6	HKE	European hake			5.2		
COD	Atlantic cod	4.1	LEZ	Megrimms	4.8				
6	28	HAD	Haddock	24.801	WHG	Whiting	4.7		
		MNZ	Monkfishes	15.359					
		COD	Atlantic cod	8.622					
		OTH	Others	8.491					
		WHG	Whiting	7.248					
		CTC	Common cuttlefish	3.621					
		JOD	John dory	3.557					
		JAX	Jack and horse mackerel	3.200					
		GUR	Red gurnard	3.131					
POL	Pollack	2.845							

15

16 Figure S3. Spatial patterns in the retained catches in 2010 (9 clusters). The same colour code
17 was assigned to each 3'*3' square belonging to the same cluster



18

19

20

21

22

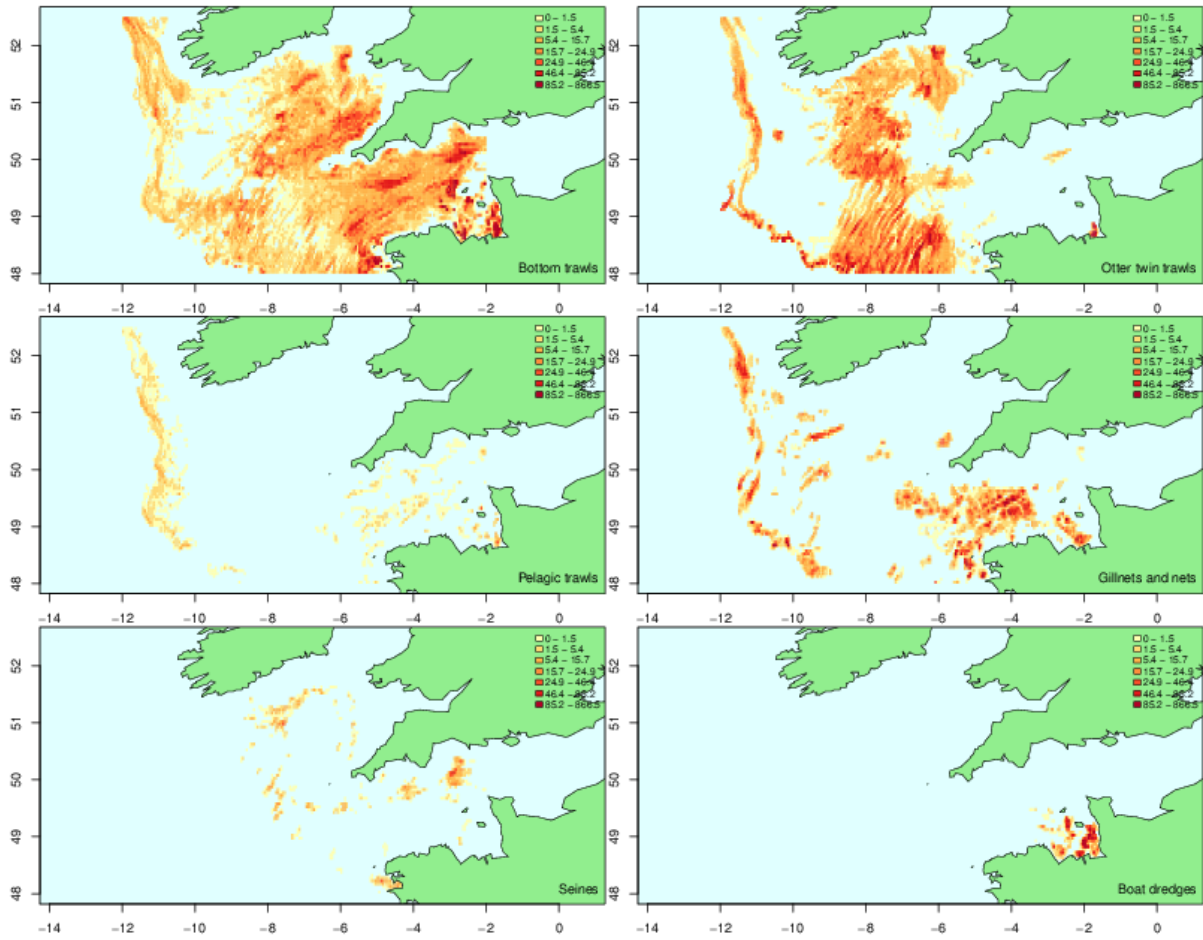
23

24

25

26

27 Fine-scale (3'*3') spatial distribution of fishing hours by fishing gears in 2010



28

29

30

31

32

33

34

35

36

37 Characterization of cluster in term of species assemblage in 2010. Species names in bold

38 correspond to Indval species. Only 80% of the landed species are presented.

Cluster	Nb of species	FAO code	Species	% Lands	Cluster	Nb of species	FAO code	Species	% Lands
1	28	MNZ	Monkfishes	14.0	6	29	OTH	Others	15.1
		CTC	Common cuttlefish	11.0			HAD	Haddock	13.4
		OTH	Others	9.9			MNZ	Monkfishes	8.5
		GUR	Red gurnard	9.4			WHG	Whiting	7.9
		JAX	Jack and horse mackerel	9.2			BIB	Pouting (Bib)	5.4
		BIB	Pouting (Bib)	8.6			QSC	Queen scallop	4.6
		WHG	Whiting	6.0			GUR	Red gurnard	4.3
		HAD	Haddock	5.1			SCE	Great atlantic scallop	4.3
		SQZ	Inshore squids	4.0			JAX	Jack and horse mackerel	4.0
POL	Pollack	3.3	SCR	Spinous spider crab	3.9				
2	29	QSC	Queen scallop	28.7	7	26	NEP	Norway lobster	24.1
		OTH	Others	13.7			MNZ	Monkfishes	18.3
		SCE	Great atlantic scallop	10.3			LEZ	Megrims	11.4
		CTC	Common cuttlefish	8.1			HAD	Haddock	8.8
		GKL	Common european bittersweet	7.5			OTH	Others	8.7
		GUR	Red gurnard	5.1			COD	Atlantic cod	7.4
		BIB	Pouting (Bib)	4.8					
SCR	Spinous spider crab	4.3							
3	29	MNZ	Monkfishes	36.0	8	29	JAX	Jack and horse mackerel	24.7
		RJN	Cuckoo ray	16.2			MNZ	Monkfishes	15.5
		LEZ	Megrims	11.7			HAD	Haddock	9.0
		OTH	Others	8.1			OTH	Others	7.7
		CTC	Common cuttlefish	7.7			LEZ	Megrims	6.9
4	26	JAX	Jack and horse mackerel	82.0	9	28	HKE	European hake	6.2
		MAC	Atlantic mackerel	9.8			RJN	Cuckoo ray	4.1
		HKE	European hake	5.5			COD	Atlantic cod	3.4
5	28	HAD	Haddock	34.5	9	28	MAC	Atlantic mackerel	3.2
		WHG	Whiting	18.8			OTH	Others	17.5
		OTH	Others	7.0			MNZ	Monkfishes	16.2
		MNZ	Monkfishes	5.7			JAX2	Jack and horse mackerel	14.5
		RJM	Spotted ray	5.4			HAD	Haddock	11.4
		COD	Atlantic cod	4.7			HKE	European hake	6.7
		JOD	John dory	3.1			LEZ2	Megrims	5.8
					WHG	Whiting	3.6		
					COD	Atlantic cod	3.0		
					RJN	Cuckoo ray	2.5		

39

40

41

42

43

44

45

46

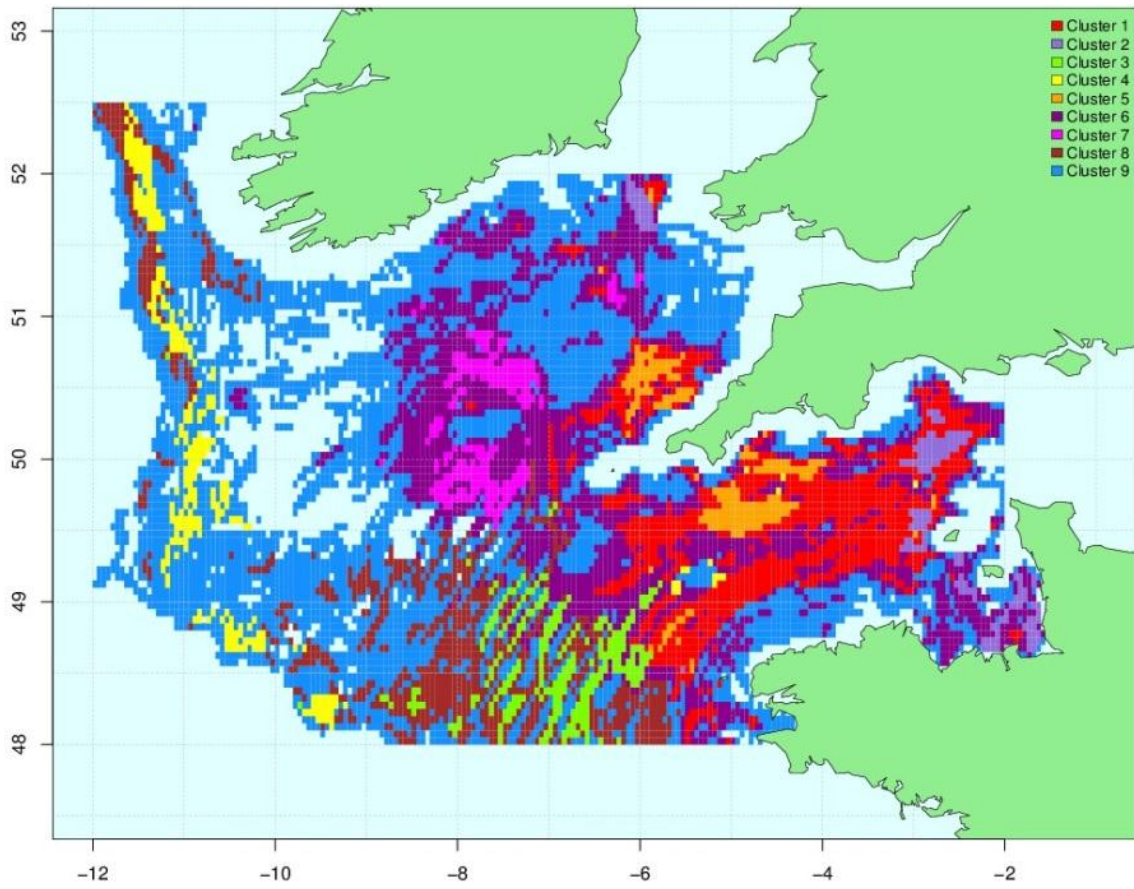
47

48

49

50

51 Figure S4. Spatial patterns in the retained catches in 2011 (9 clusters). The same colour code
52 was assigned to each 3'*3' square belonging to the same cluster.



53

54

55

56

57

58

59

60

61

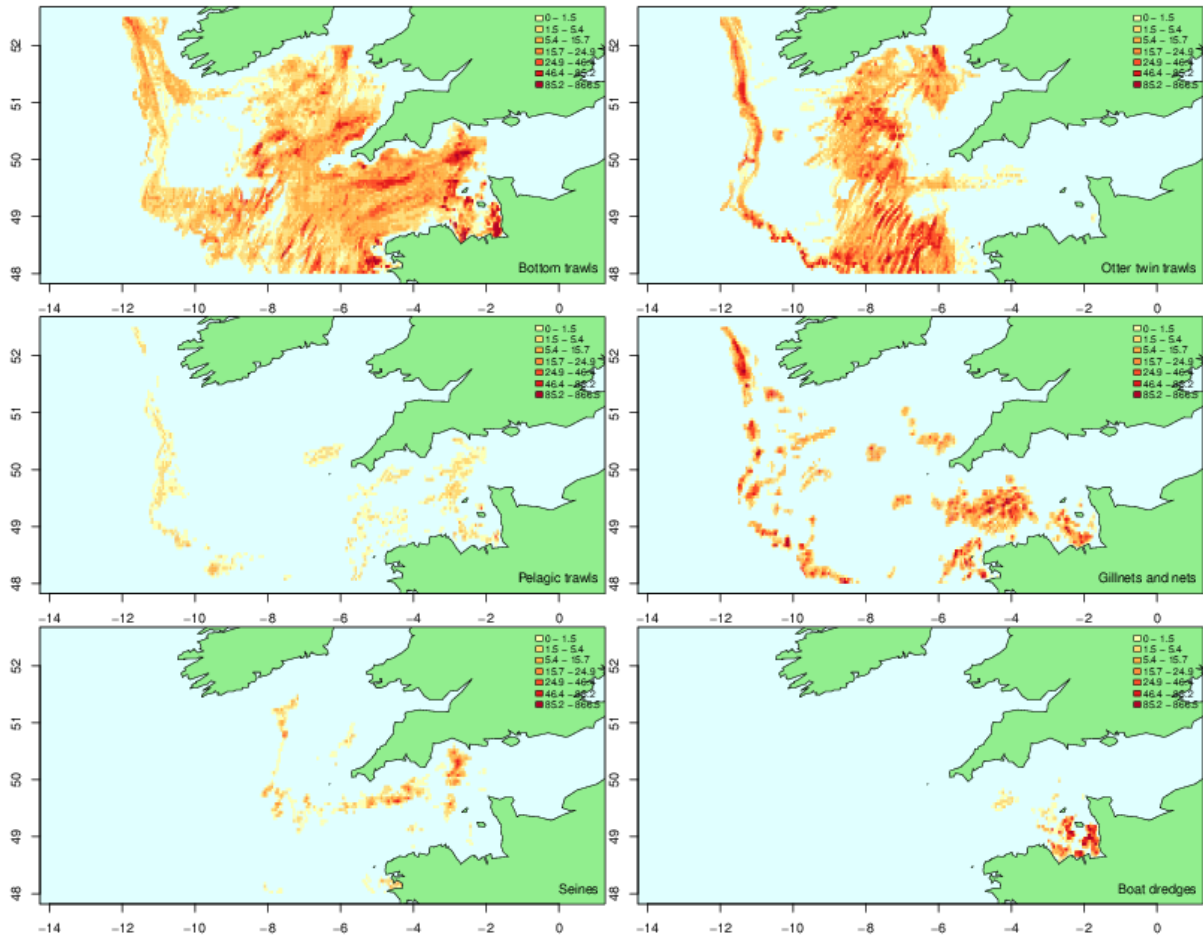
62

63

64

65

66 Fine-scale (3'x3') spatial distribution of fishing hours by fishing gears in 2011



67

68

69

70

71

72

73

74

75 Characterization of cluster in term of species assemblage in 2011. Species names in bold

76 correspond to Indval species. Only 80% of the landed species are presented.

Cluster	Nb of species	FAO code	Species	% Lands	Cluster	Nb of species	FAO code	Species	% Lands	
1	29	HAD	Haddock	15.3	6	29	HAD	Haddock	15.5	
		MNZ	Monkfishes	11.4			OTH	Others	12.3	
		OTH	Others	10.5			MNZ	Monkfishes	11.7	
		WHG	Whiting	9.1			COD	Atlantic cod	8.5	
		GUR	Red gurnard	7.4			QSC	Queen scallop	7.4	
		BIB	Pouting (Bib)	7.3			WHG	Whiting	6.3	
		COD	Atlantic cod	5.0			SCE	Great atlantic scallop	3.5	
		SQZ	Inshore squids	4.9			HKE	European hake	3.0	
		JAX	Jack and horse mackerel	4.5			SYC	Small-spotted catshark	2.9	
CTC	Common cuttlefish	4.0	CTC	Common cuttlefish	2.8					
2	29	QSC	Queen scallop	25.4	SCR	Spinous spider crab	2.6	LEZ	Megrims	2.5
		OTH	Others	12.0	MNZ	Monkfishes	18.1	MNZ	Monkfishes	18.1
		CTC	Common cuttlefish	7.8	HAD	Haddock	15.9	HAD	Haddock	15.9
		SCE	Great atlantic scallop	6.9	NEP	Norway lobster	13.4	NEP	Norway lobster	13.4
		GKL	Common european bittersweet	6.1	COD	Atlantic cod	13.4	COD	Atlantic cod	13.4
		SYC	Small-spotted catshark	5.0	OTH	Others	9.5	OTH	Others	9.5
		GUR	Red gurnard	4.5	LEZ	Megrims	9.1	LEZ	Megrims	9.1
		SCR	Spinous spider crab	4.5	MNZ	Monkfishes	35.0	MNZ	Monkfishes	35.0
		WHG	Whiting	4.3	HAD	Haddock	11.6	HAD	Haddock	11.6
BIB	Pouting (Bib)	4.0	LEZ	Megrims	11.5	LEZ	Megrims	11.5		
3	27	MNZ	Monkfishes	31.1	RJN	Cuckoo ray	9.6	RJN	Cuckoo ray	9.6
		HAD	Haddock	13.7	HKE	European hake	9.3	HKE	European hake	9.3
		CTC	Common cuttlefish	13.1	HKE	European hake	20.7	HKE	European hake	20.7
		RJN	Cuckoo ray	11.1	MNZ	Monkfishes	18.8	MNZ	Monkfishes	18.8
		LEZ	Megrims	7.0	OTH	Others	13.0	OTH	Others	13.0
OTH	Others	6.0	9	29	HAD	Haddock	10.2	HAD	Haddock	10.2
HKE	European hake	50.3			LEZ	Megrims	6.8	LEZ	Megrims	6.8
JAX	Jack and horse mackerel	24.7			COD	Atlantic cod	5.3	COD	Atlantic cod	5.3
MAC	Atlantic mackerel	13.7			JAX	Jack and horse mackerel	4.5	JAX	Jack and horse mackerel	4.5
5	28	HAD	Haddock	22.4						
		WHG	Whiting	19.9						
		MNZ	Monkfishes	9.7						
		OTH	Others	6.7						
		COD	Atlantic cod	6.0						
		CTC	Common cuttlefish	5.0						
		SQZ	Inshore squids	4.8						
		BIB	Pouting (Bib)	4.2						

77

78

79

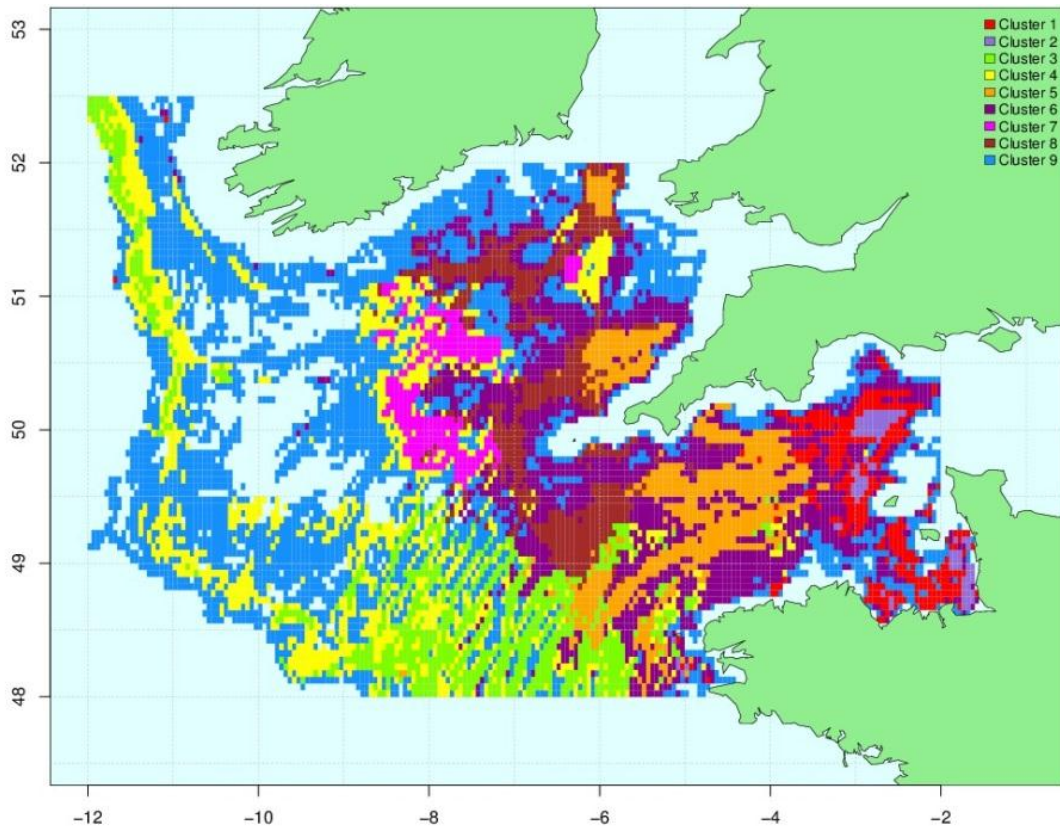
80

81

82

83

84 Figure S5. Spatial patterns in the retained catches in 2012 (9 clusters). The same colour code
85 was assigned to each 3'*3' square belonging to the same cluster .



86

87

88

89

90

91

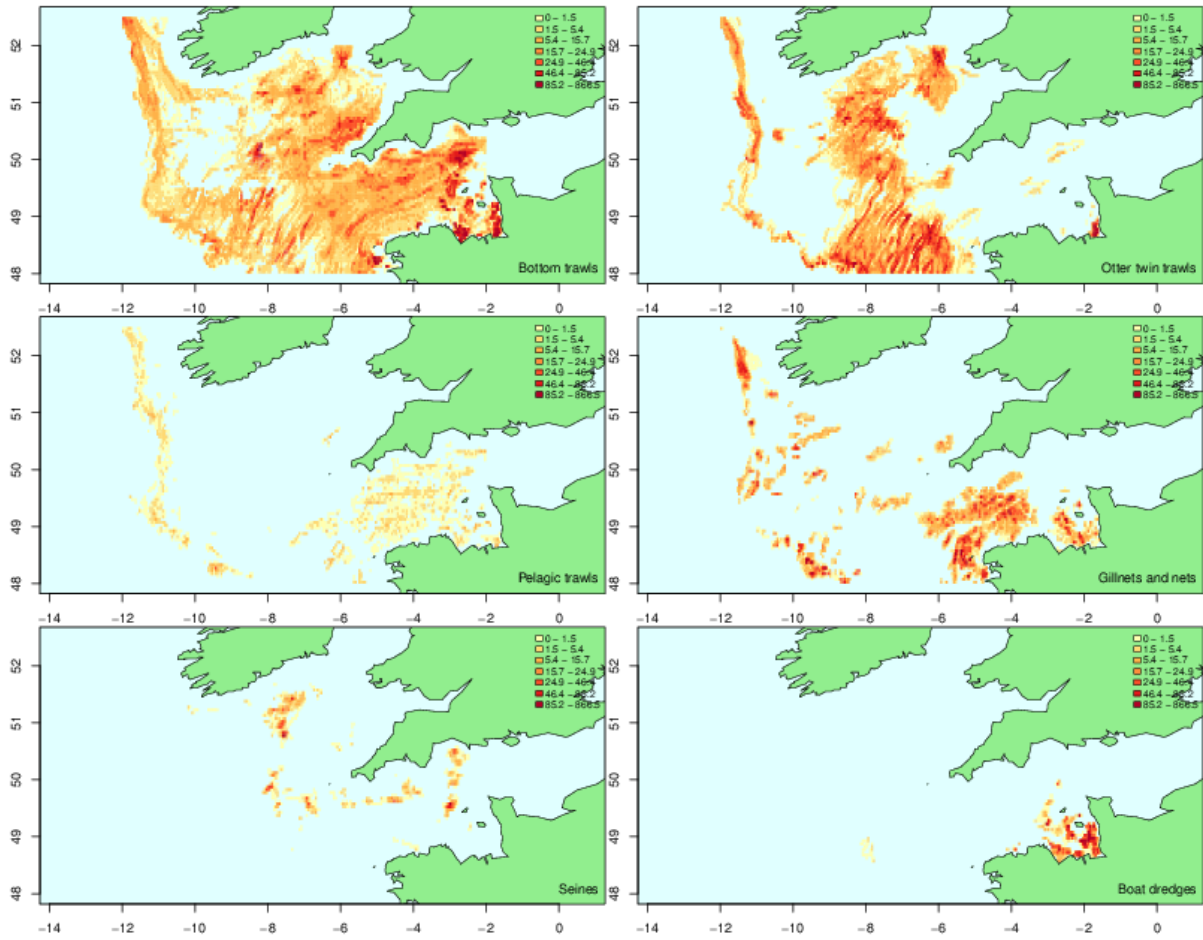
92

93

94

95

96 Fine-scale (3'x3') spatial distribution of fishing hours by fishing gears in 2012



97

98

99

100

101

102

103

104

105

106 Characterization of cluster in term of species assemblage in 2012. Species names in bold
 107 correspond to Indval species. Only 80% of the landed species are presented.

Cluster	Nb of species	FAO code	Species	% Lands	Cluster	Nb of species	FAO code	Species	% Lands		
1	29	SCE	Great atlantic scallop	18.4	6	29	HAD	Haddock	21.9		
		OTH	Others	10.7			MNZ	Monkfishes	13.2		
		SCR	Spinous spider crab	10.1			OTH	Others	10.6		
		JAX	Jack and horse mackerel	8.6			COD	Atlantic cod	9.0		
		CTC	Common cuttlefish	8.3			WHG	Whiting	5.8		
		GUR	Red gurnard	5.9			GUR	Red gurnard	4.2		
		BIB	Pouting (Bib)	5.7			CTC	Common cuttlefish	3.9		
		WHG	Whiting	5.1			JOD	John dory	3.4		
		GKL	Common european bittersweet	4.4			BIB	Pouting (Bib)	3.4		
		SYC	Small-spotted catshark	4.2			POL	Pollack	3.0		
2	29	GKL	Common european bittersweet	19.7	7	26	SYC	Small-spotted catshark	2.8		
		CTC	Common cuttlefish	19.6			COD	Atlantic cod	20.8		
		OTH	Others	11.7			HAD	Haddock	17.8		
		QSC	Queen scallop	10.8			MNZ	Monkfishes	16.6		
		WHG	Whiting	5.8			NEP	Norway lobster	9.3		
		JAX	Jack and horse mackerel	4.7			OTH	Others	9.0		
		GUR	Red gurnard	4.7			HKE	European hake	8.5		
		BIB	Pouting (Bib)	4.5			8	29	HAD	Haddock	40.2
3	27	MNZ	Monkfishes	35.8	COD	Atlantic cod			16.8		
		HAD	Haddock	11.5	MNZ	Monkfishes			10.4		
		LEZ	Megrims	9.0	WHG	Whiting			8.4		
		RJN	Cuckoo ray	8.0	OTH	Others			5.2		
		OTH	Others	6.7	9	29			HKE	European hake	21.3
		JAX	Jack and horse mackerel	6.3					MNZ	Monkfishes	17.6
		HKE	European hake	4.7					HAD	Haddock	11.9
JAX	Jack and horse mackerel	23.7	OTH	Others			8.3				
4	27	HKE	European hake	23.4	LEZ	Megrims	7.8				
		MAC	Atlantic mackerel	20.3	JAX	Jack and horse mackerel	7.6				
		MNZ	Monkfishes	12.8	COD	Atlantic cod	6.6				
		5	27	HAD	Haddock	21.8	9	29	COD	Atlantic cod	6.6
MNZ	Monkfishes			16.4	5	27			HAD	Haddock	21.8
WHG	Whiting			9.4					MNZ	Monkfishes	16.4
COD	Atlantic cod			7.4					WHG	Whiting	9.4
OTH	Others			7.3					COD	Atlantic cod	7.4
CTC	Common cuttlefish			5.5					OTH	Others	7.3
GUR	Red gurnard			4.2					CTC	Common cuttlefish	5.5
RJM	Spoteed ray			3.8					GUR	Red gurnard	4.2
BIB	Pouting (Bib)	3.5	RJM	Spoteed ray			3.8				

108

109

110

111

112

113

114

115

116

117

