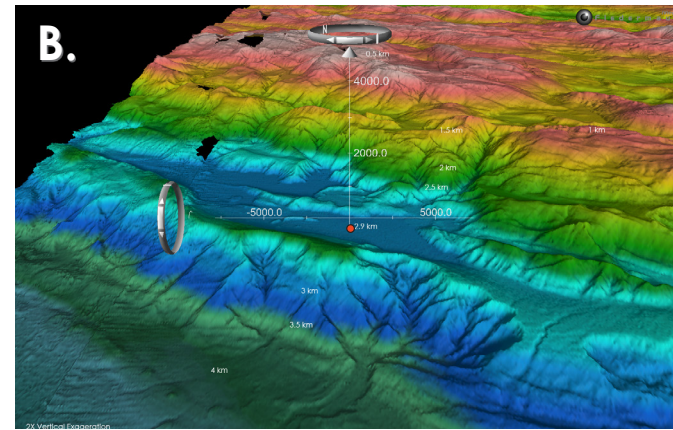
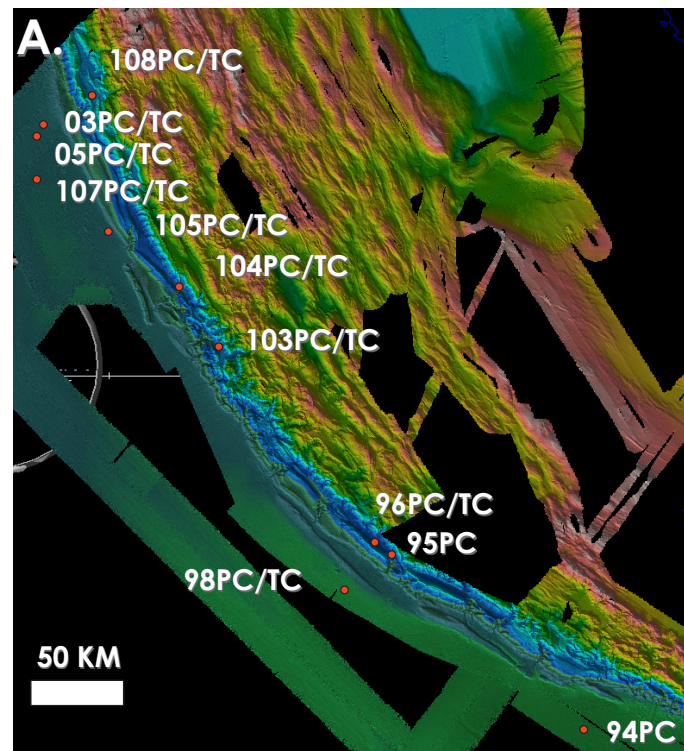
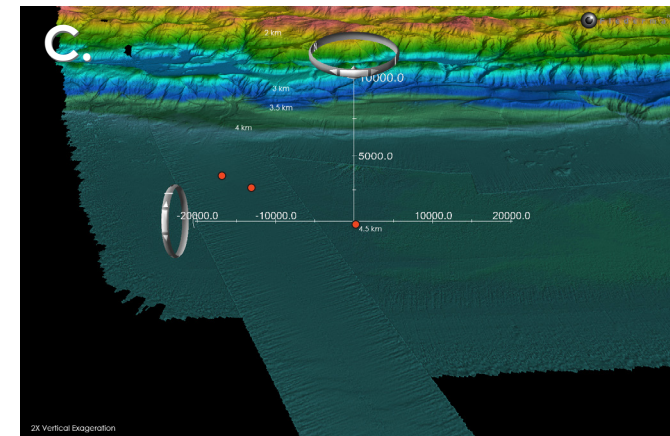


Supplemental File S6 Low-Angle Oblique Site Maps

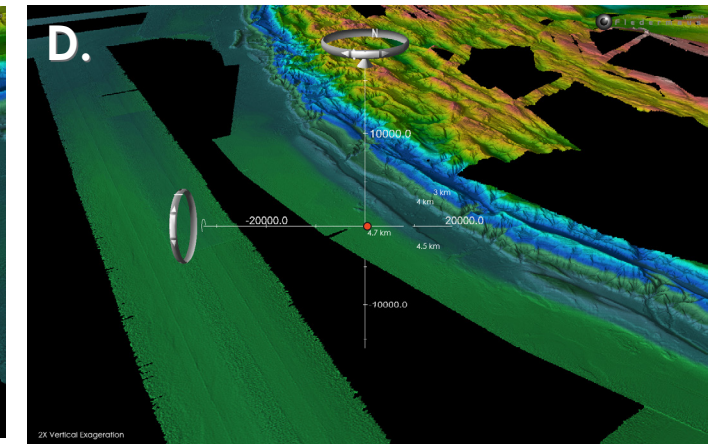
Supplemental File S6. Low-Angle Oblique Site Maps. RR0705 Core locations are plotted so that the geomorphology of the core sites can be evaluated with respect to preserved stratigraphy. Depth contours are also plotted. Bathymetry was collected while at sea and also provided by our collaborators from the UK, Japan, France, and Germany (Ladage et al., 2006). (A) Map showing relative locations of cores as orange dots (Supplemental File S 1). White scale bar is 50 km. (B–through H) Larger scale, low angle oblique views of core sites (orange dots). Orientation arrows (in white) point in the direction of north and up (vertical). Vertical and horizontal units are in meters. Please visit <http://dx.doi.org/10.1130/GES01066.S6> or the full-text article on www.gsapubs.org to view Supplemental File S6.



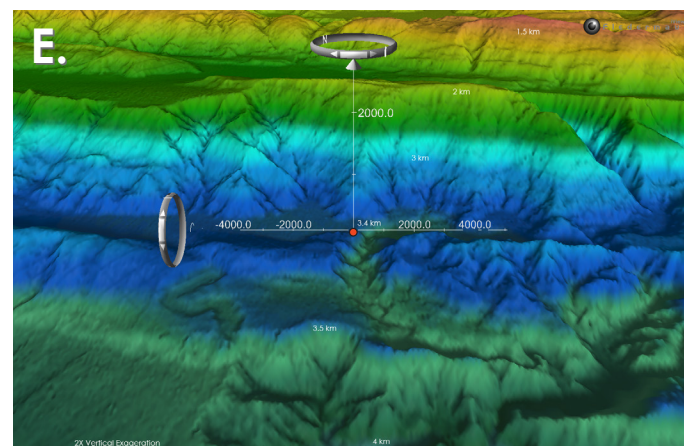
RR0705 108PC/TC



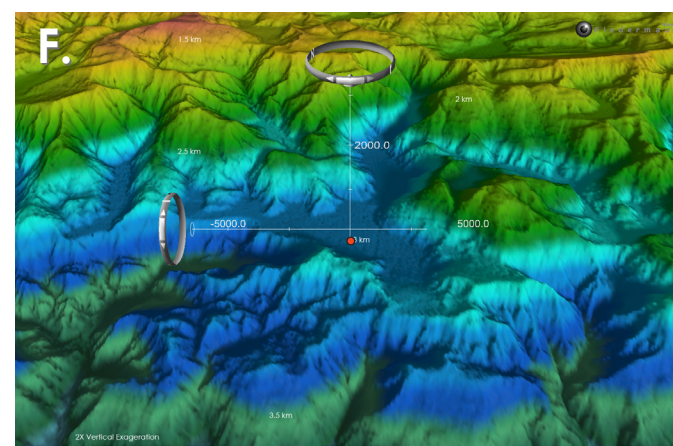
RR0705 05PC/TC, 03PC/TC and 107PC/TC



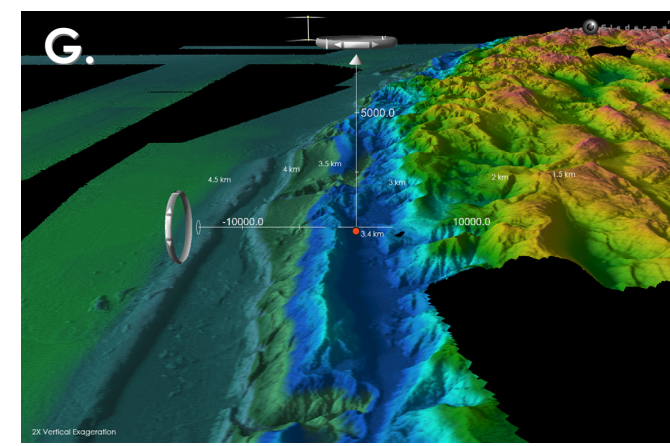
RR0705 98PC/TC



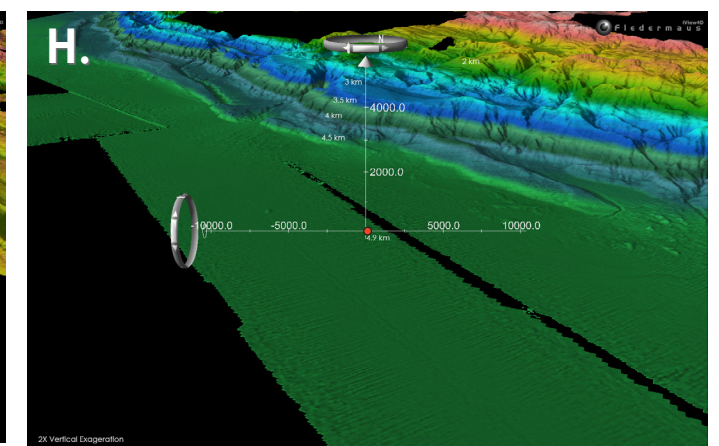
RR0705 104PC/TC



RR0705 103PC/TC



RR0705 96PC/TC and 95PC/TC

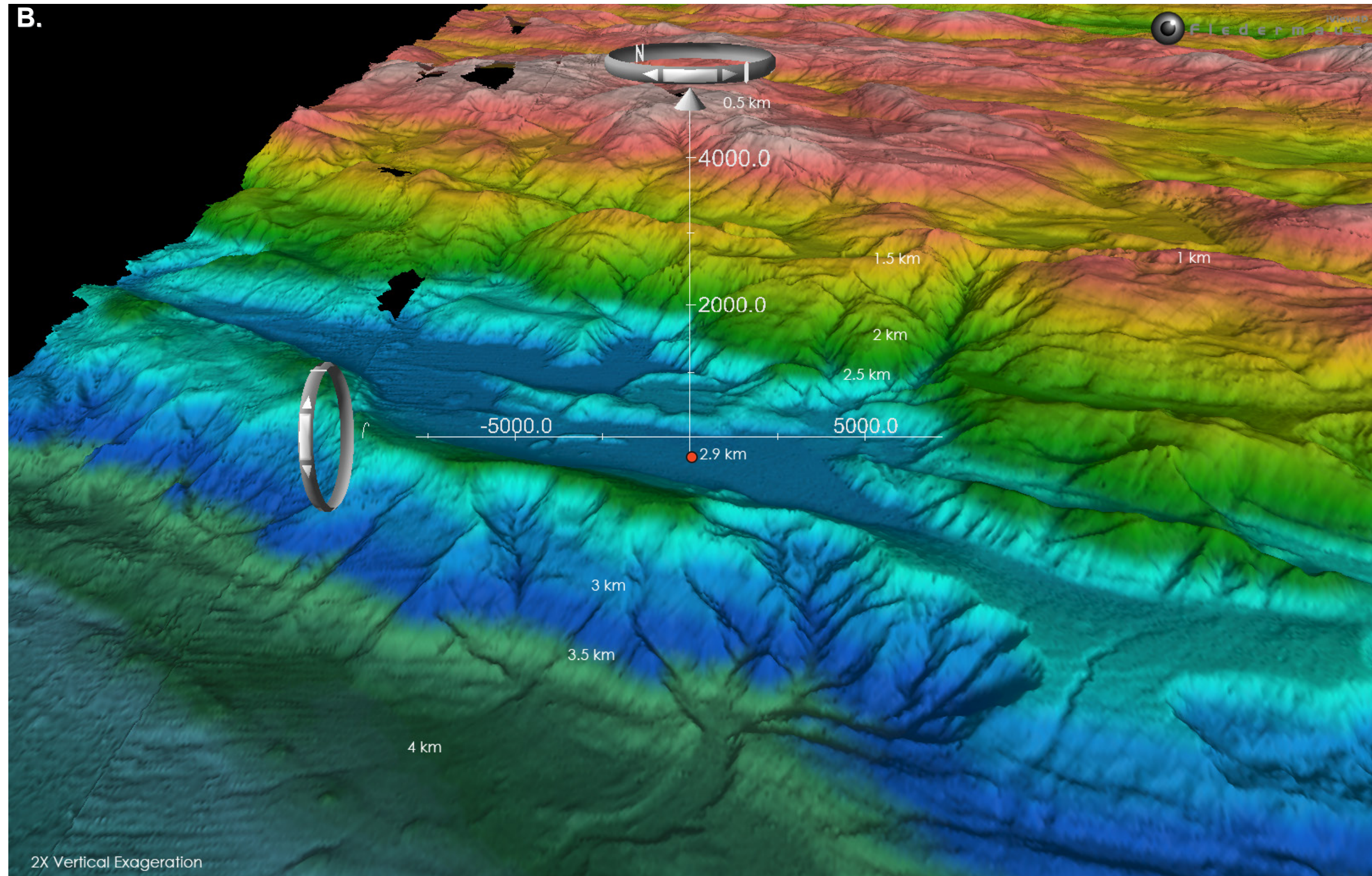


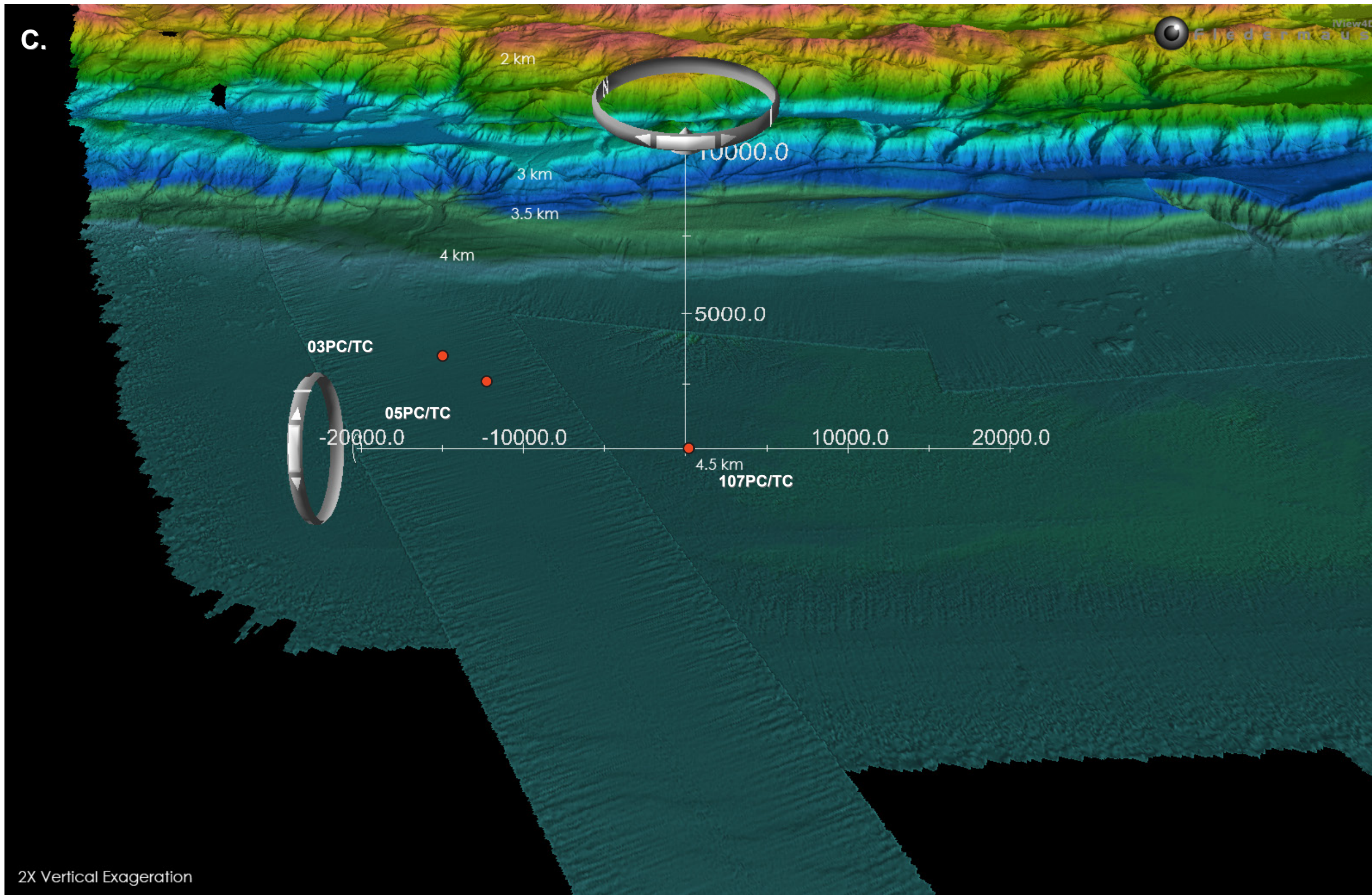
RR0705 94PC

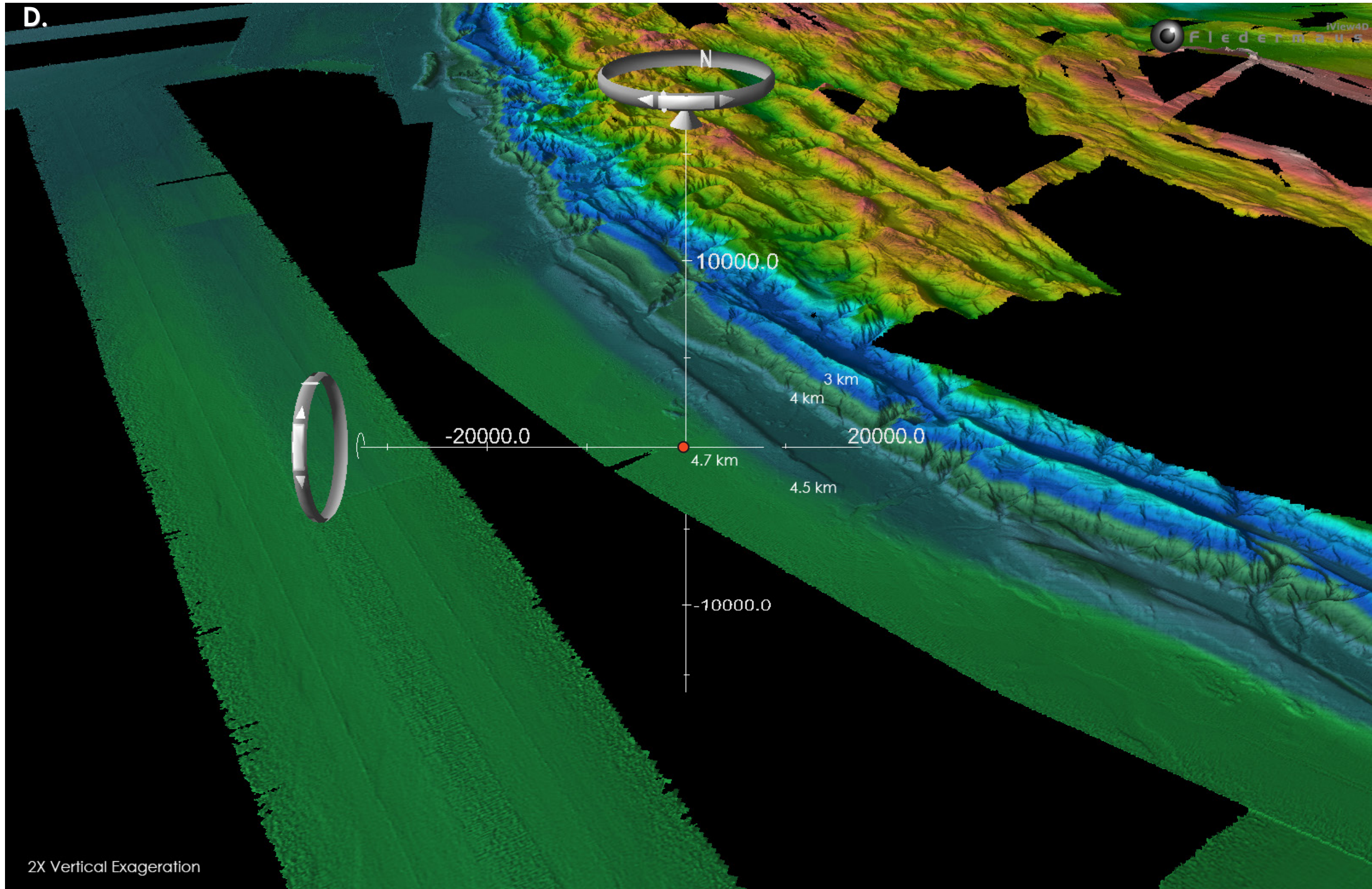
Citation:

Patton, J.R., Goldfinger, C., Morey, A.E., Ikehara, K., Romsos, C., Stoner, J., Djadjadihardja, Y., Udrek, Ardhyastuti, S., Gaffar, E.Z., and Viscaino, A., 2015, A 6500 year earthquake history in the region of the 2004 Sumatra-Andaman subduction zone earthquake: *Geosphere*, v. 11, doi:10.1130/GES01066.1.

B.

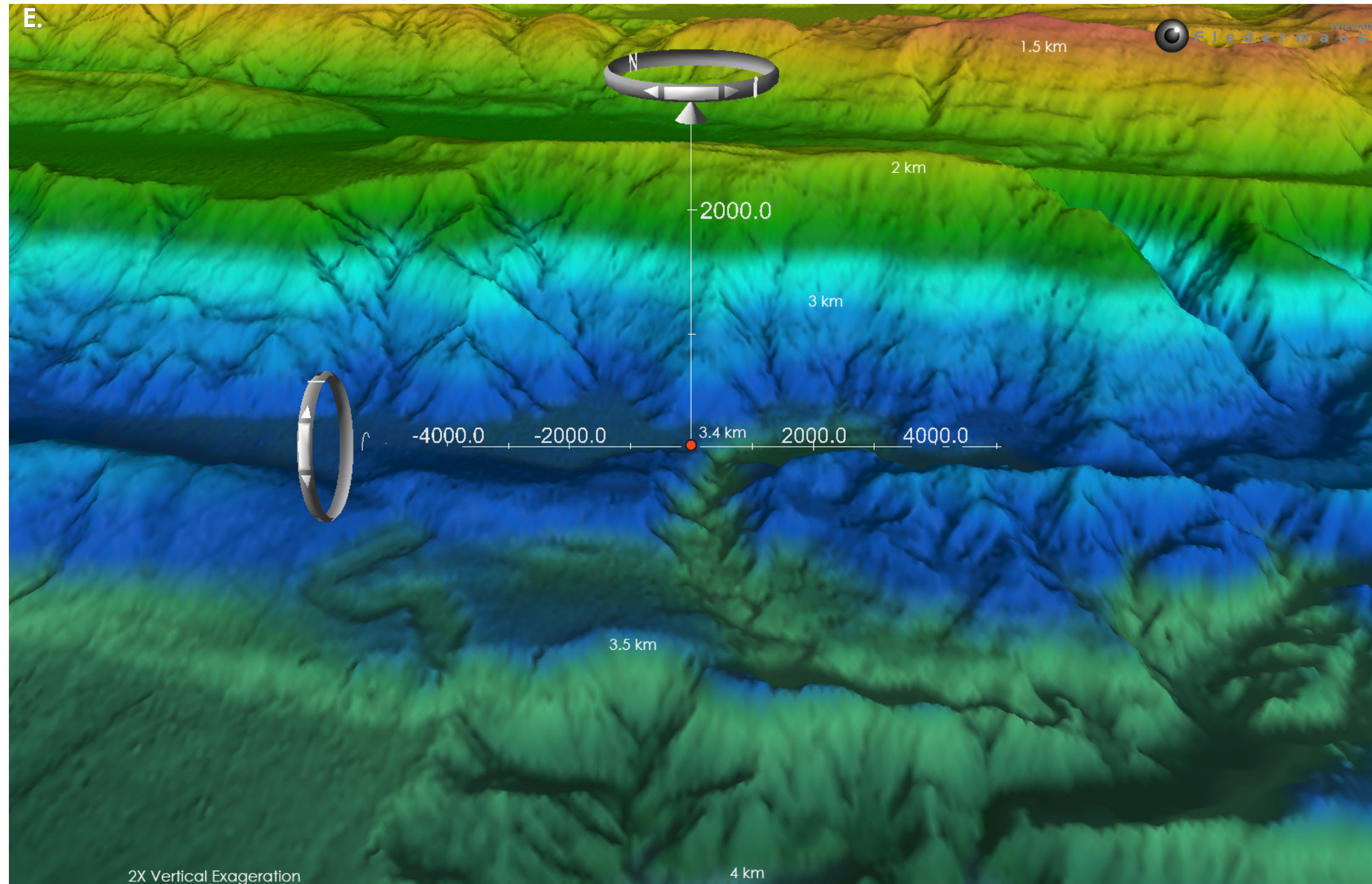






2X Vertical Exaggeration

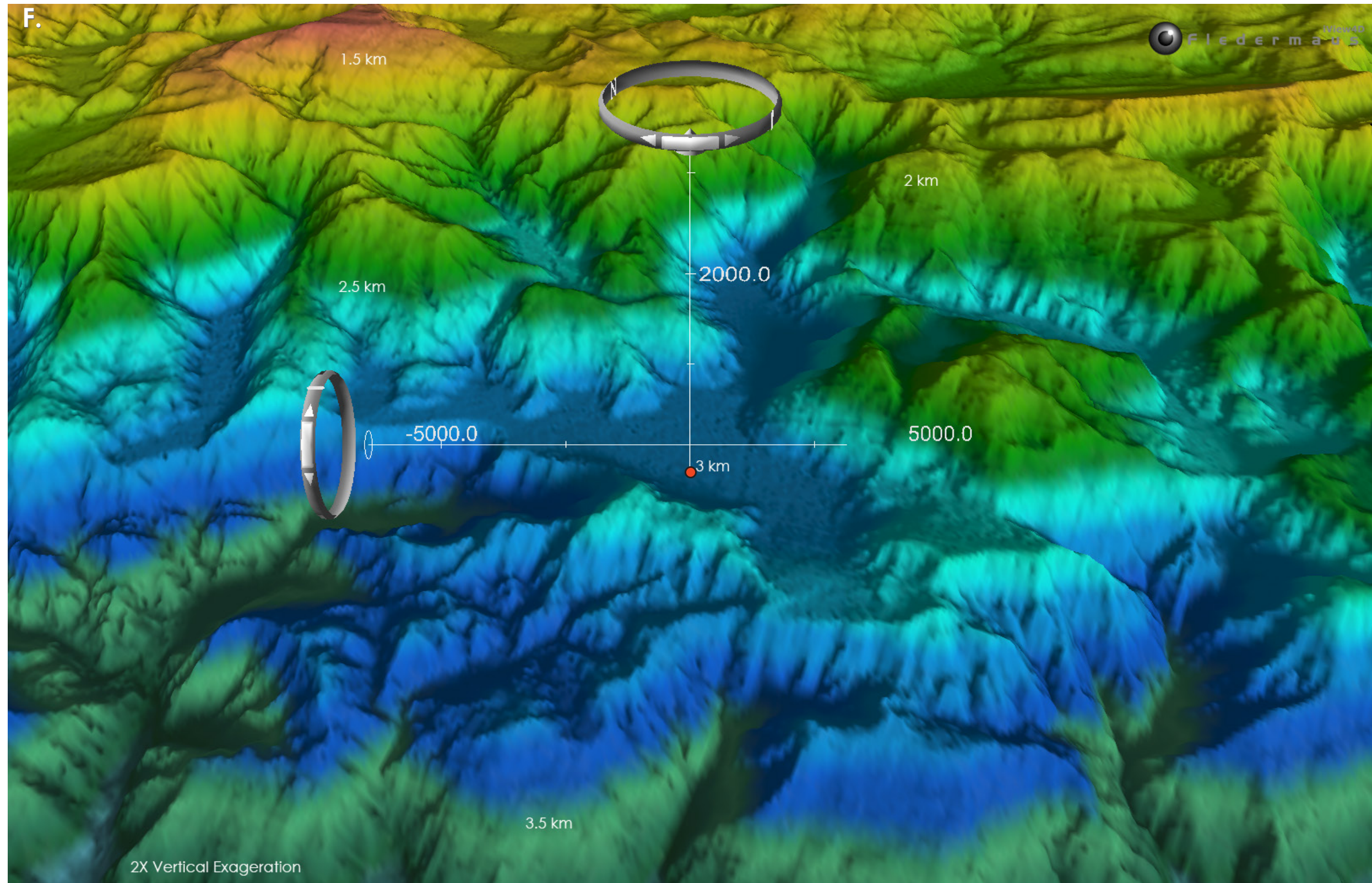
E.

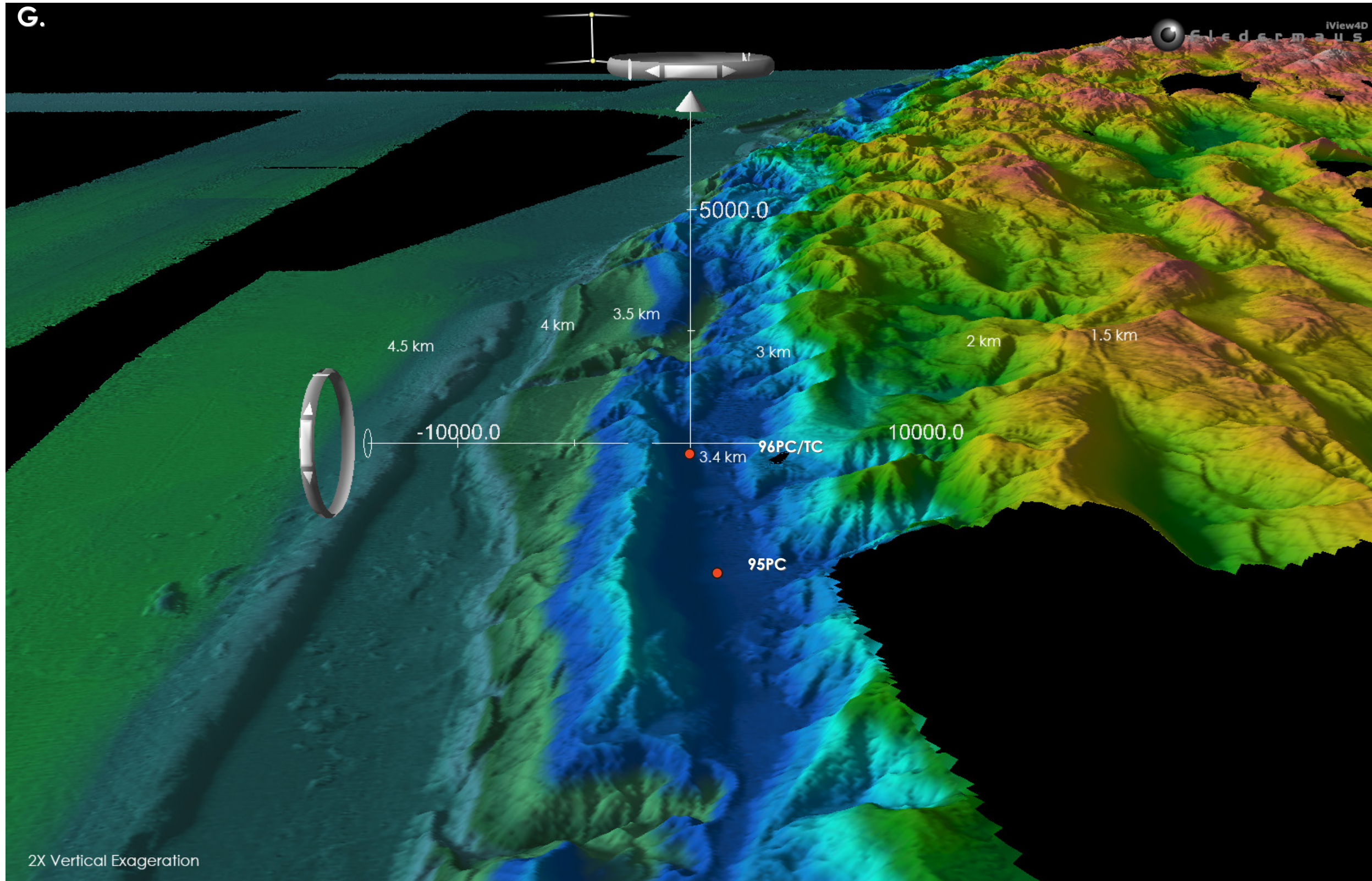


2X Vertical Exaggeration

4 km

F.





RR0705 94PC

H.

