

Image pair 3: Surface roughness from MISR satellite Gulf Stream, 2012-07-06

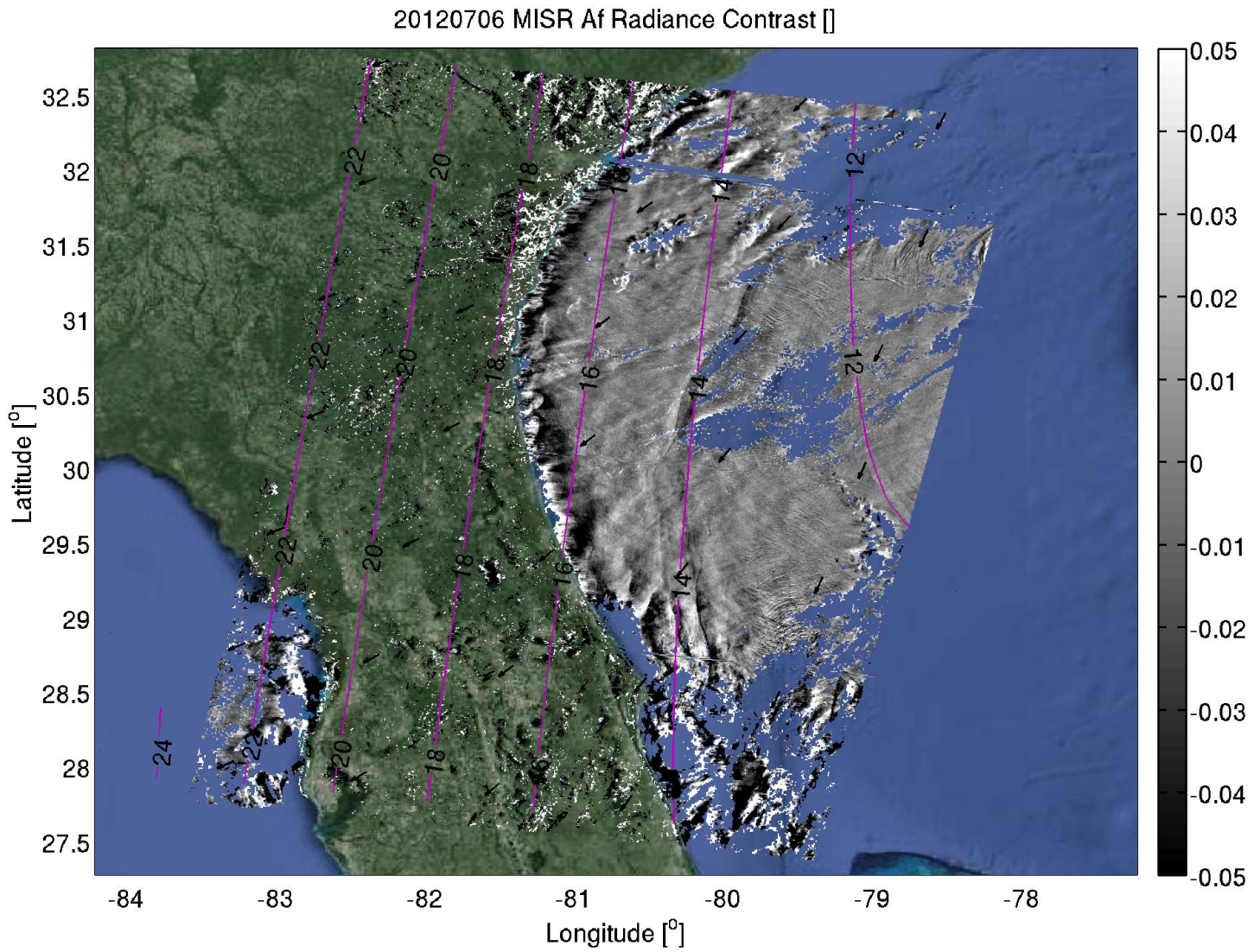


Image pair 3: Surface roughness from MISR satellite

Gulf Stream, 2012-07-06

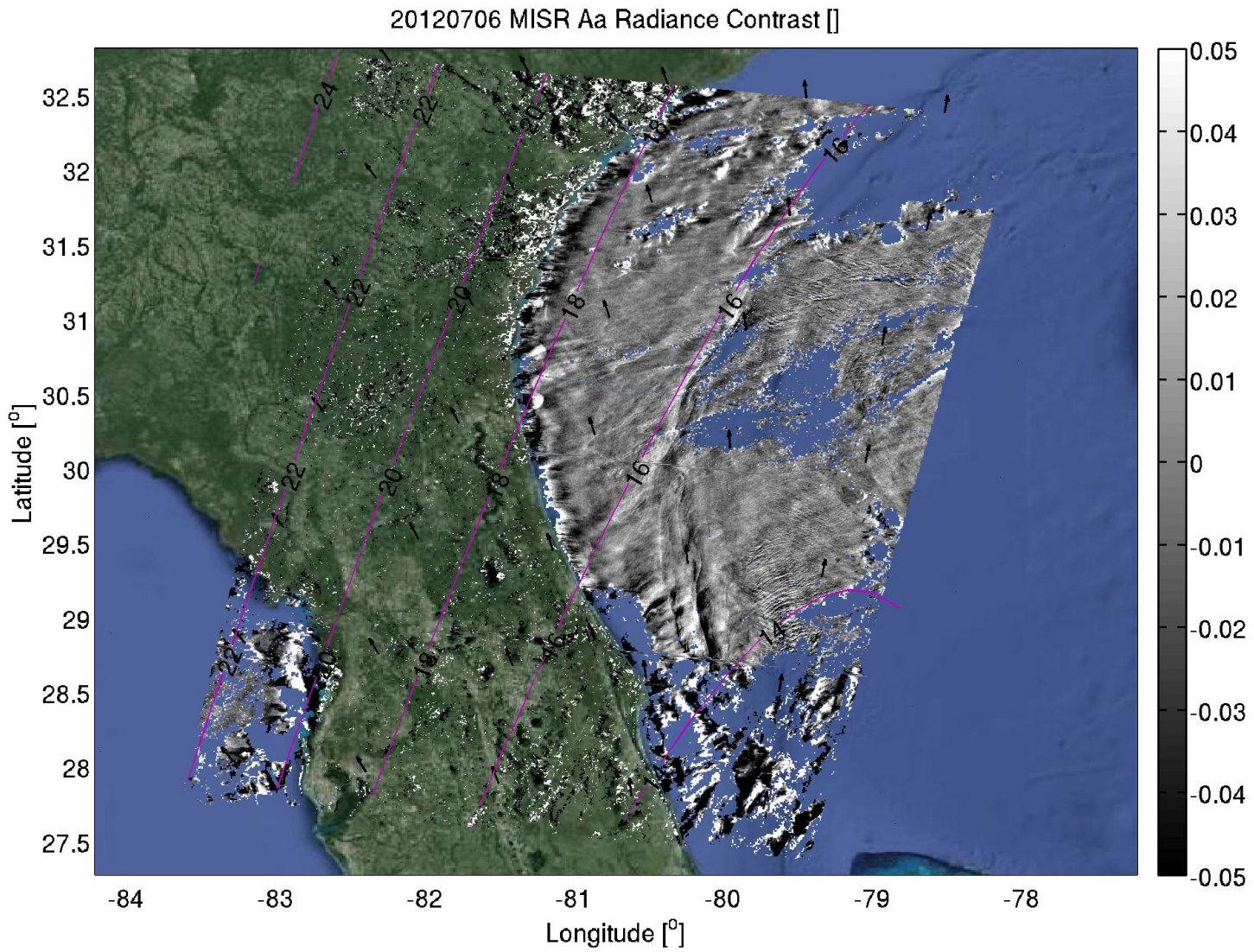


Image pair 3: zoom

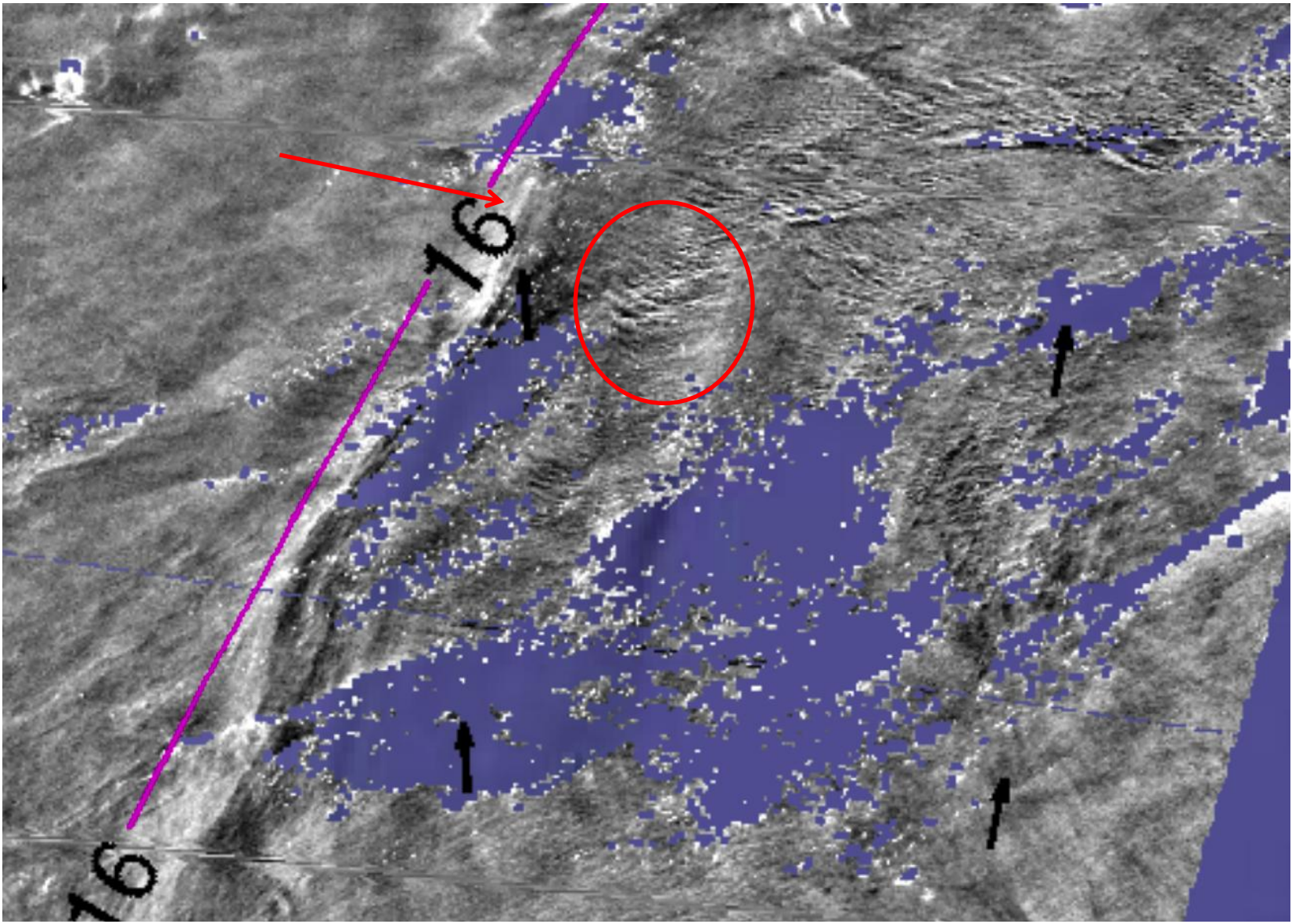


Image pair 3: zoom

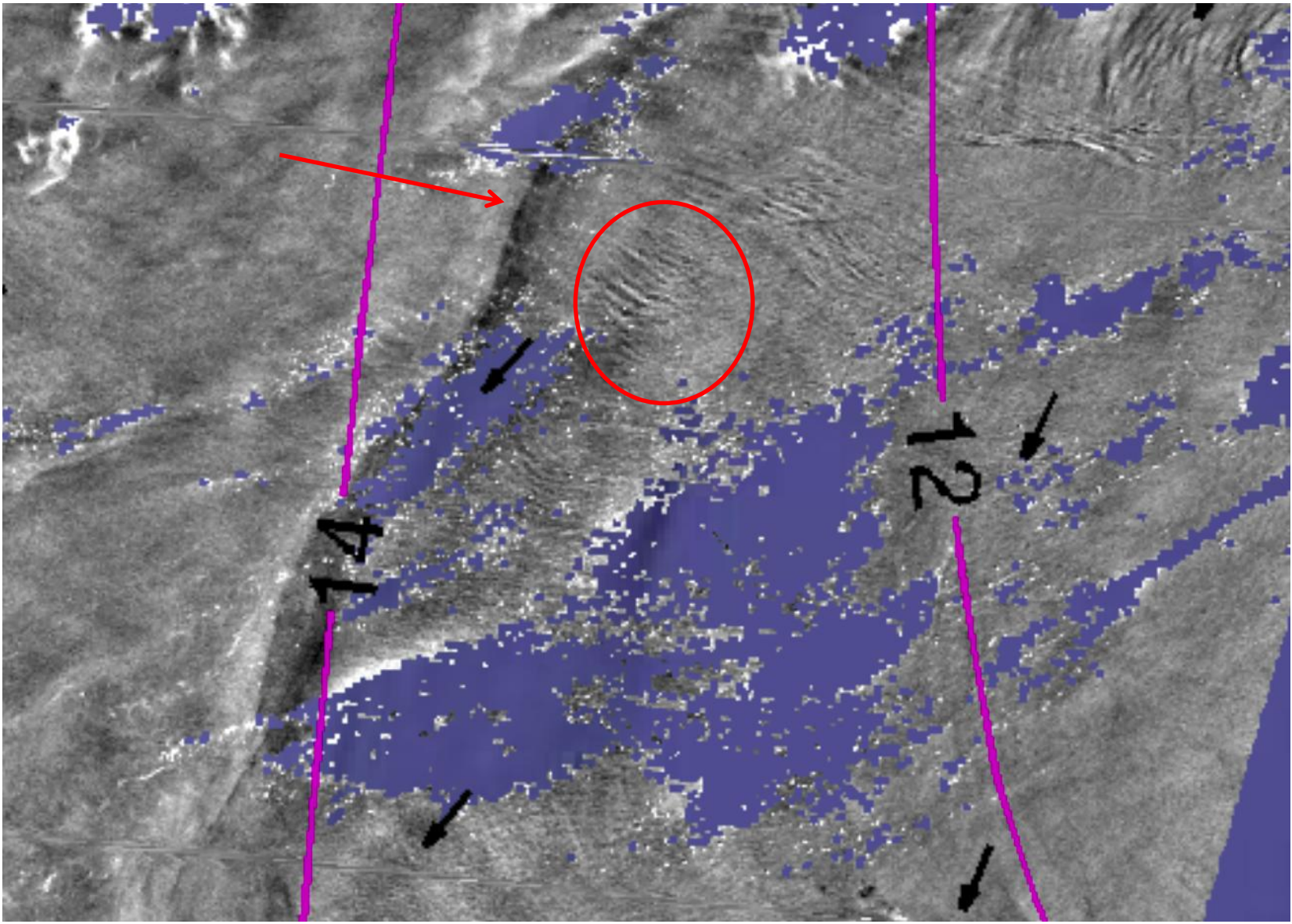


Image pair 4: Surface roughness from MISR satellite Gulf of Mexico, 2010-05-24

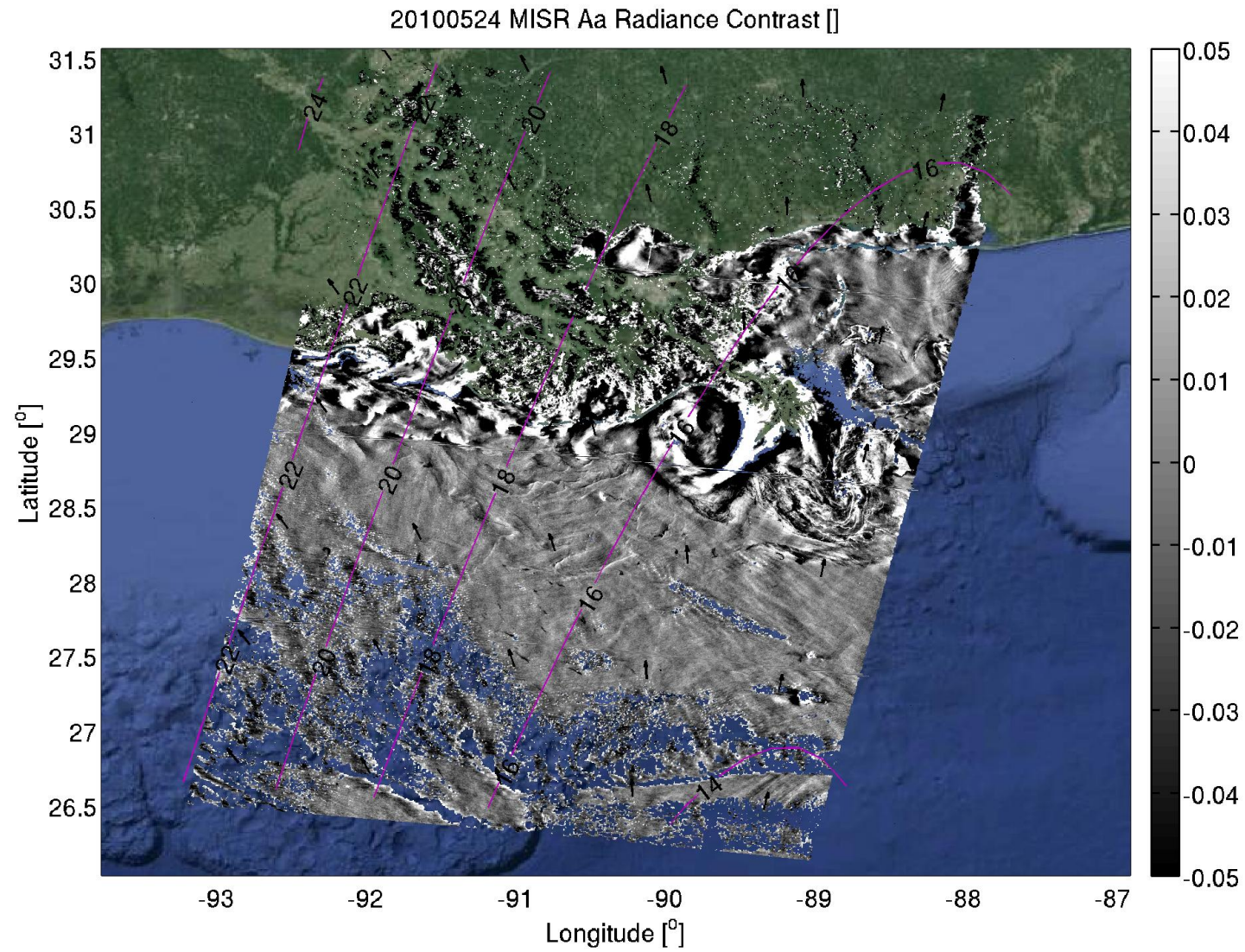


Image pair 4: Surface roughness from MISR satellite
Gulf of Mexico, 2010-05-24

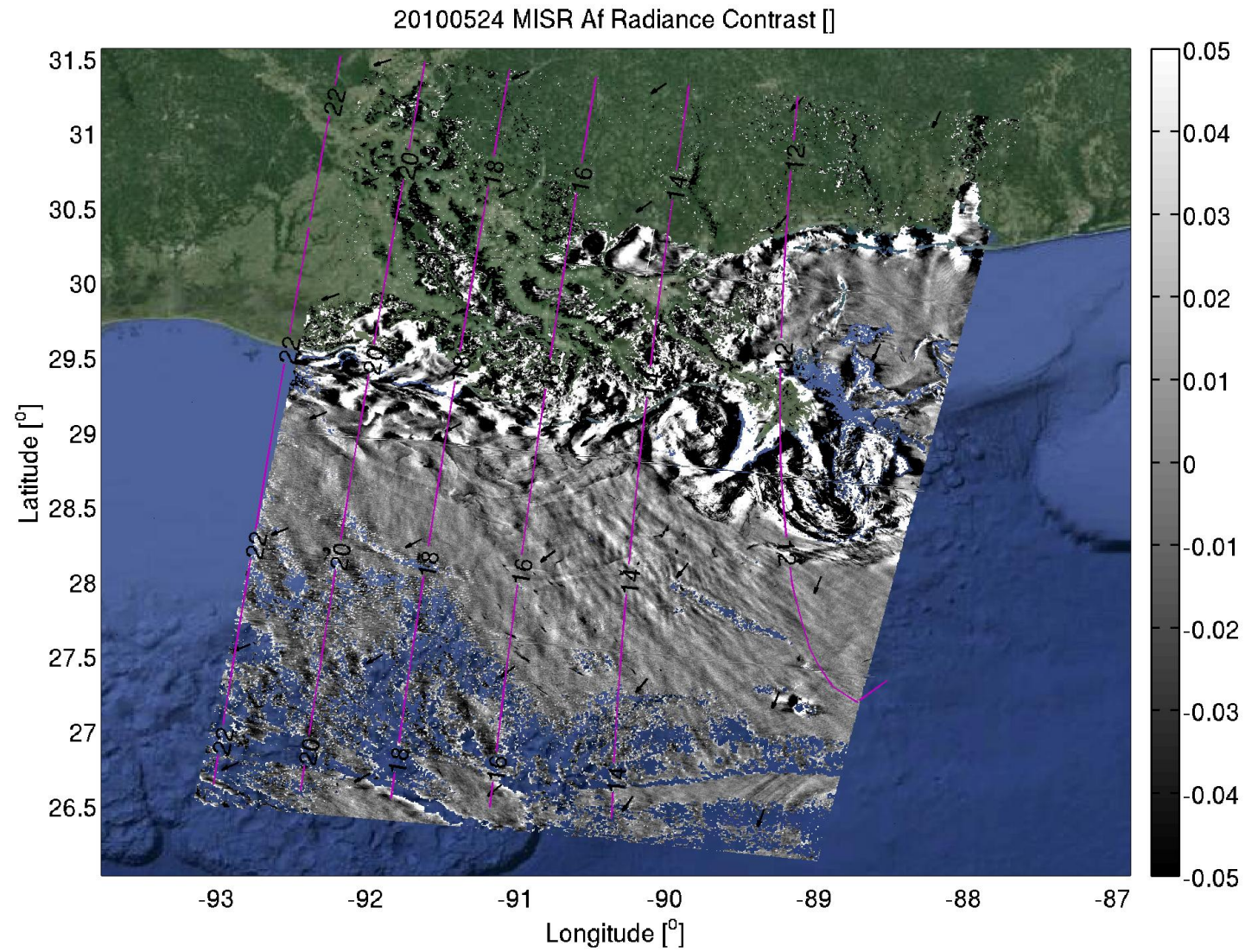


Image pair 4: zoom

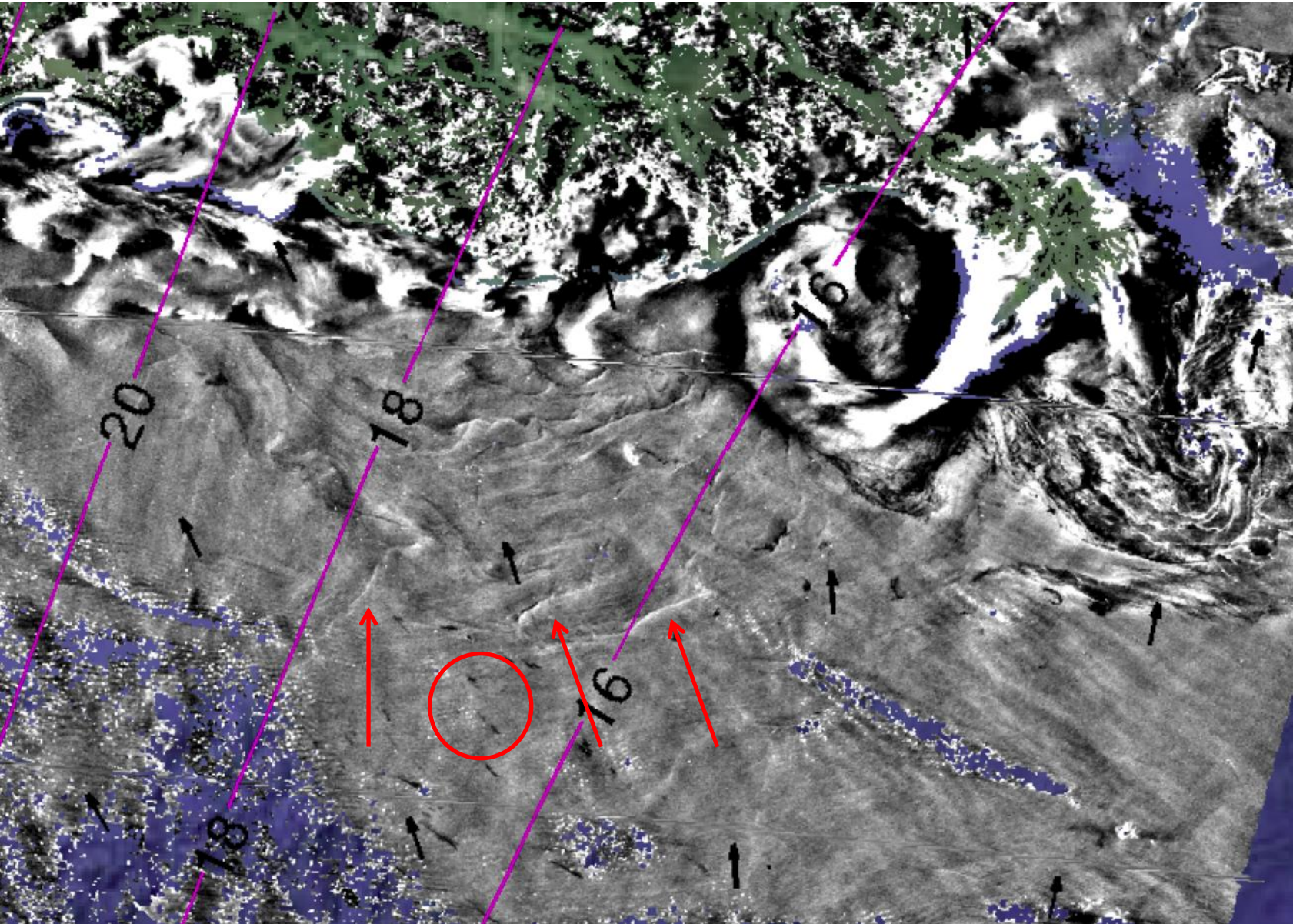


Image pair 4: zoom

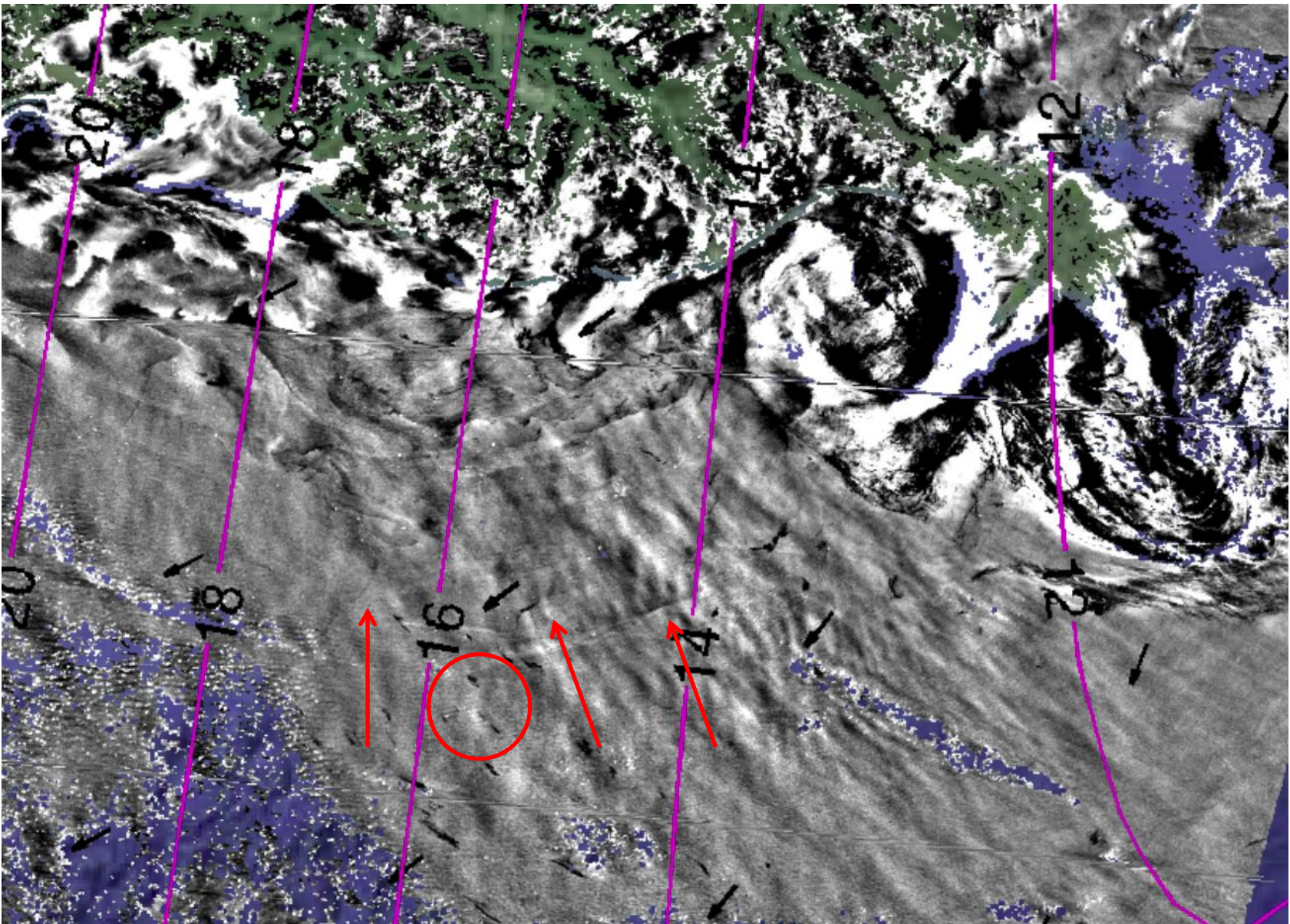


Image pair 5: Surface roughness from MISR satellite Gulf of Mexico, 2010-07-29

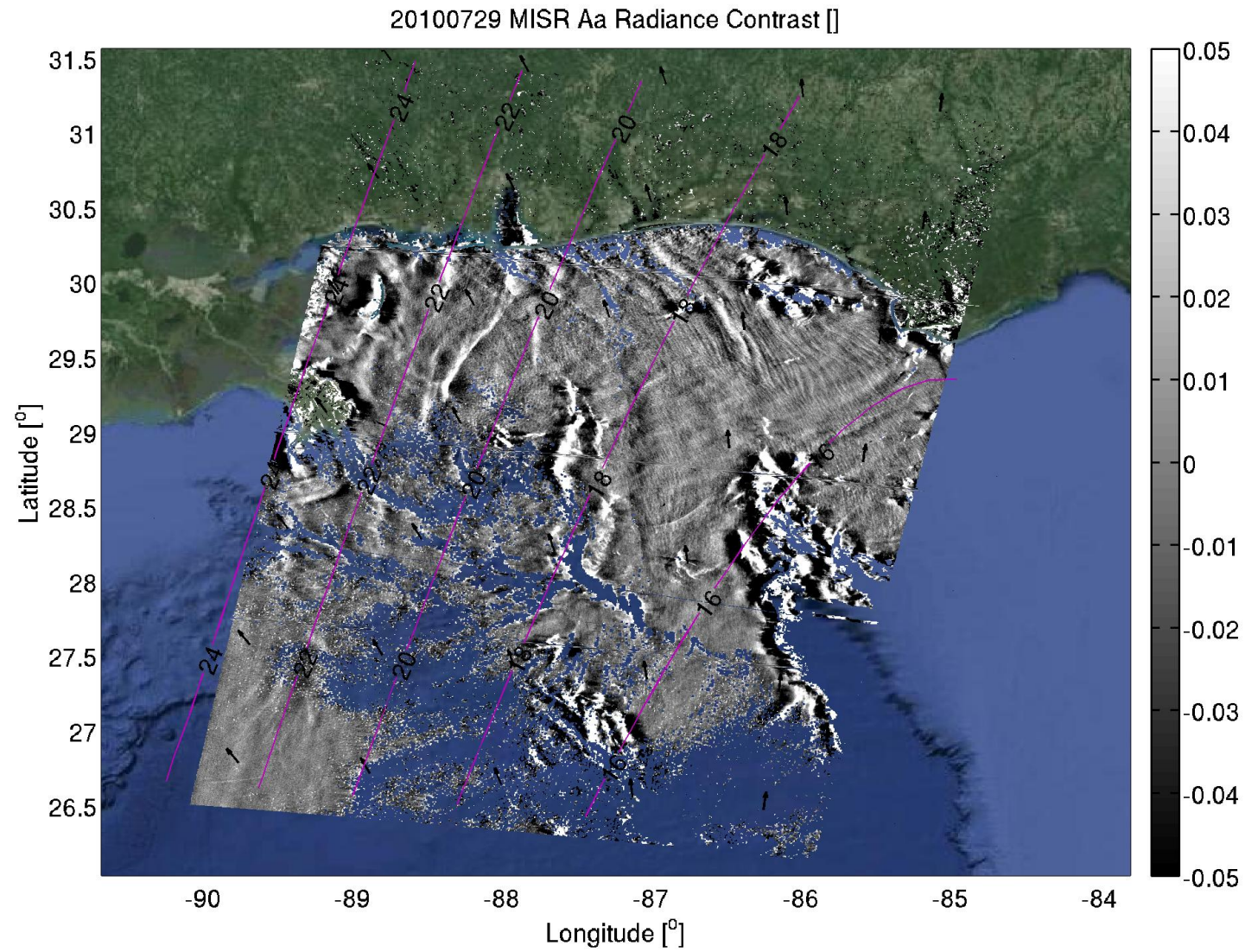
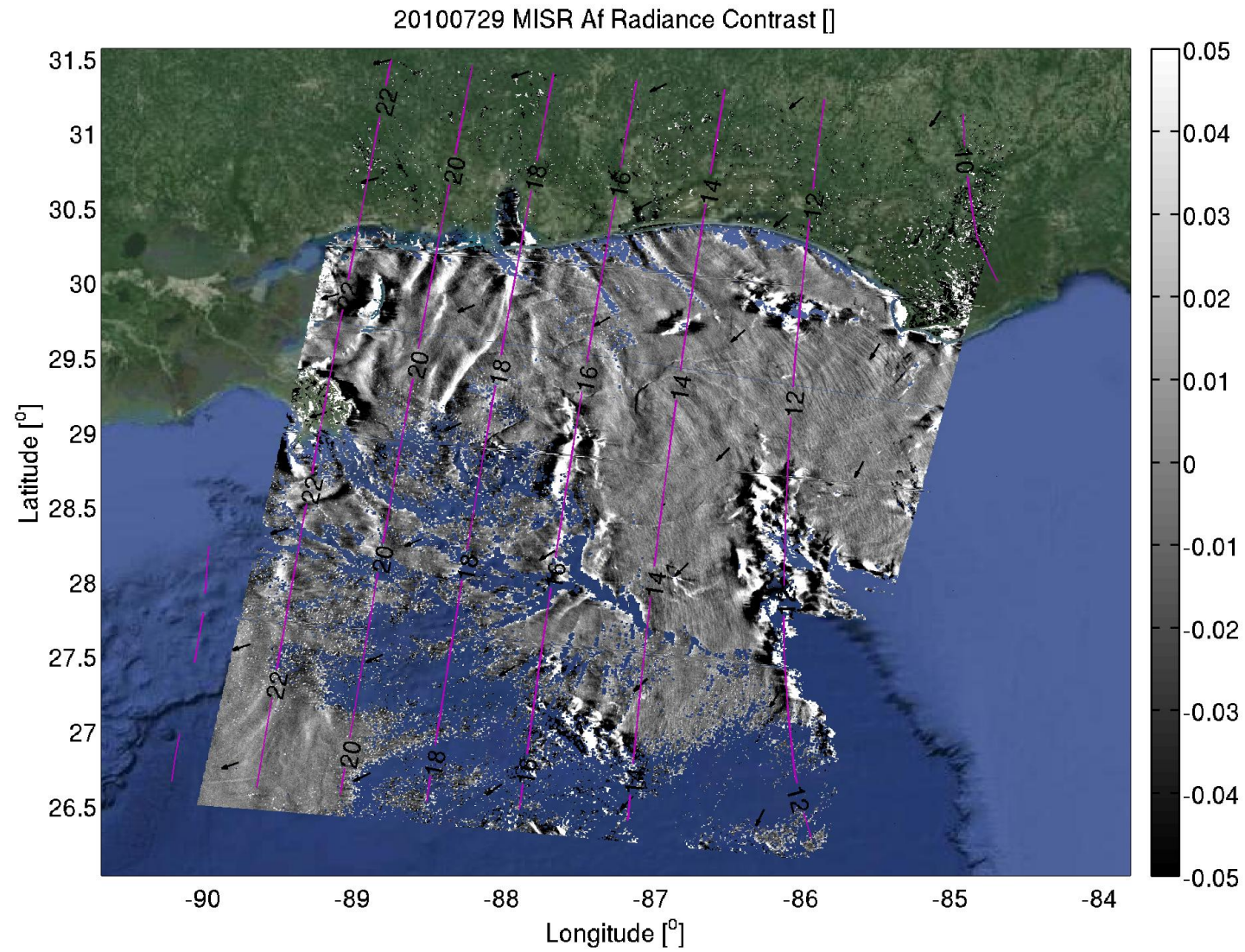
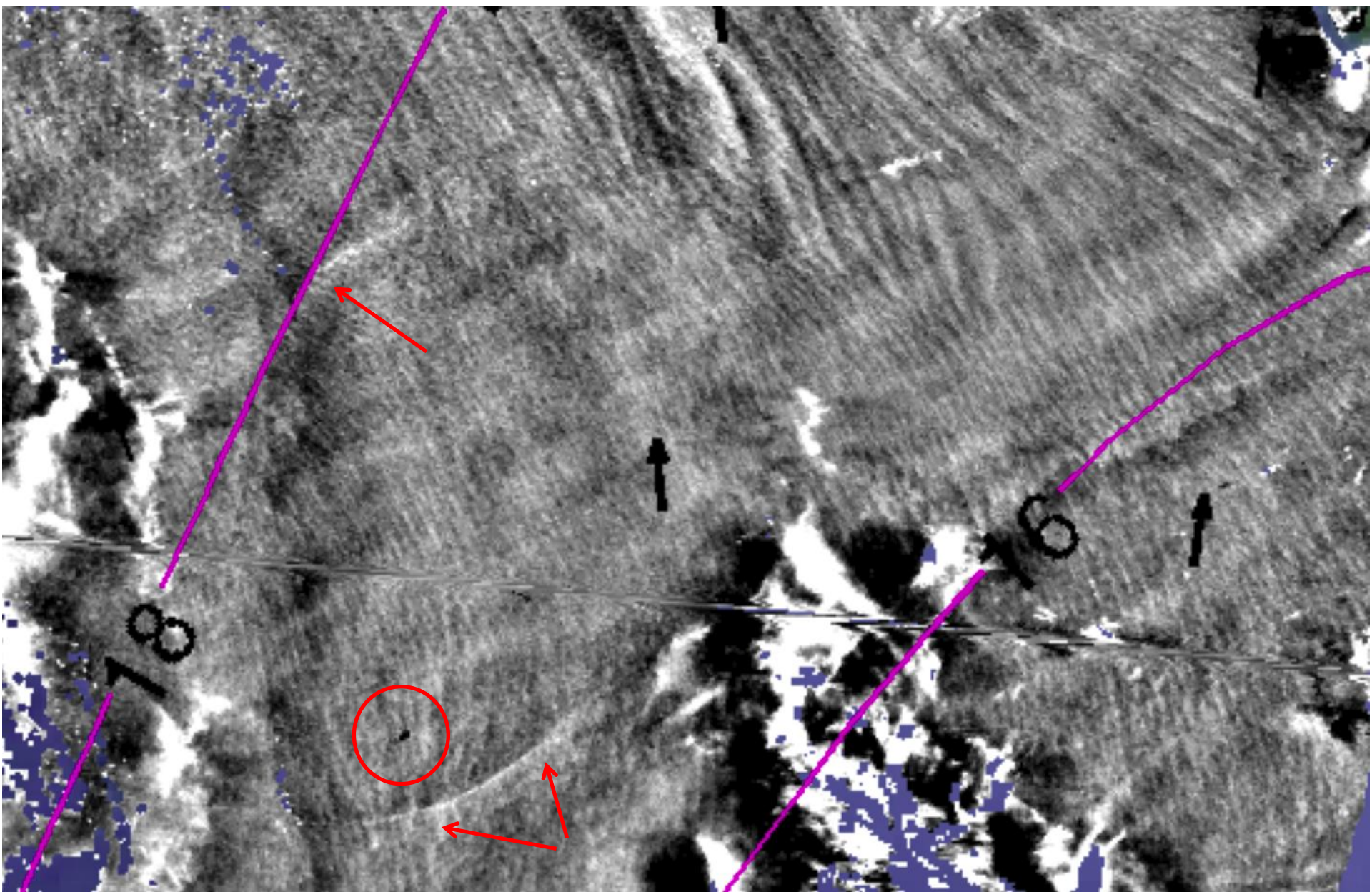


Image pair 5: Surface roughness from MISR satellite
Gulf of Mexico, 2010-07-29



Zoom



Zoom

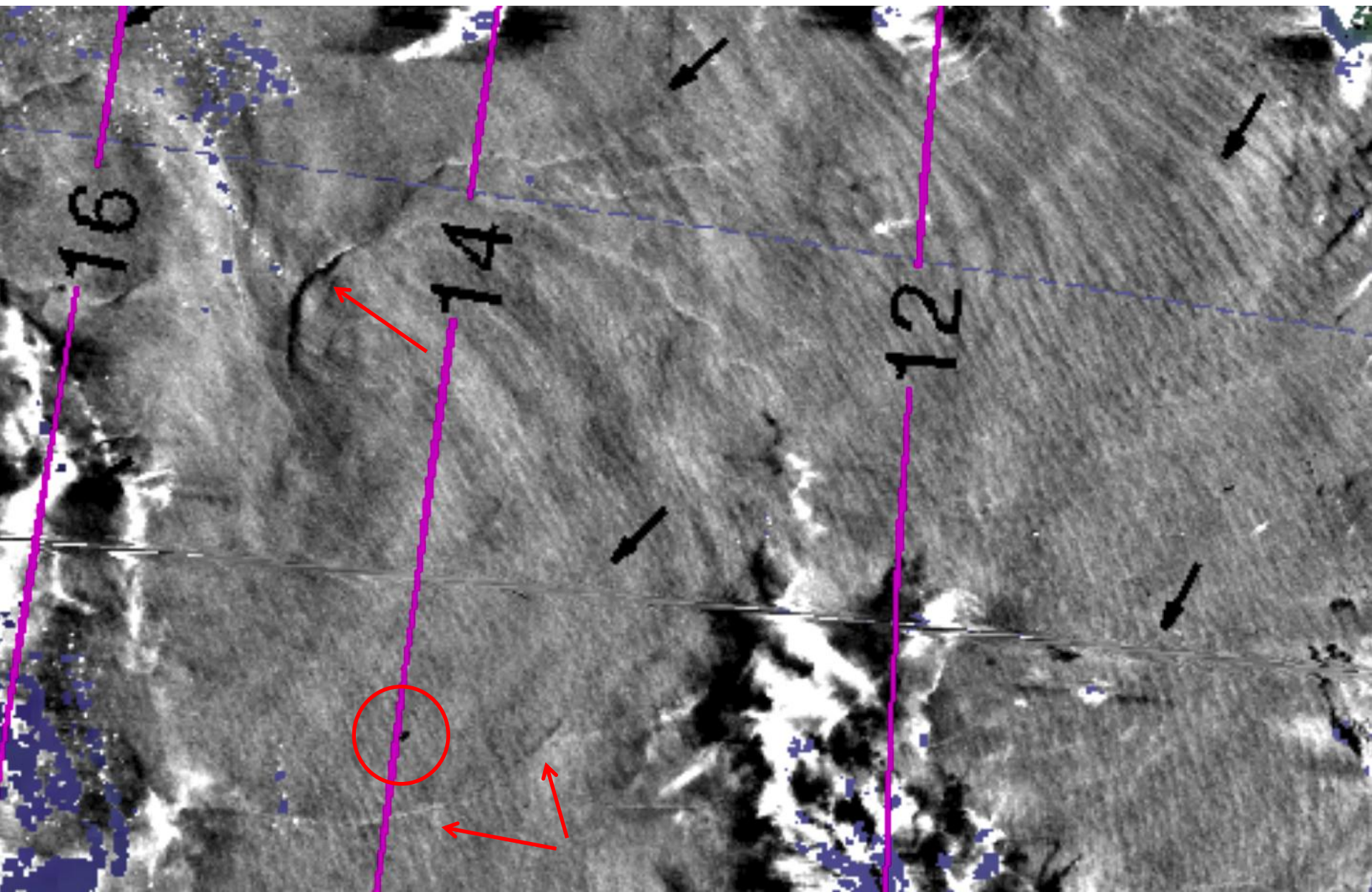


Image pair 6: Surface roughness from MISR satellite
Gulf of Lybia, 2012-03-03

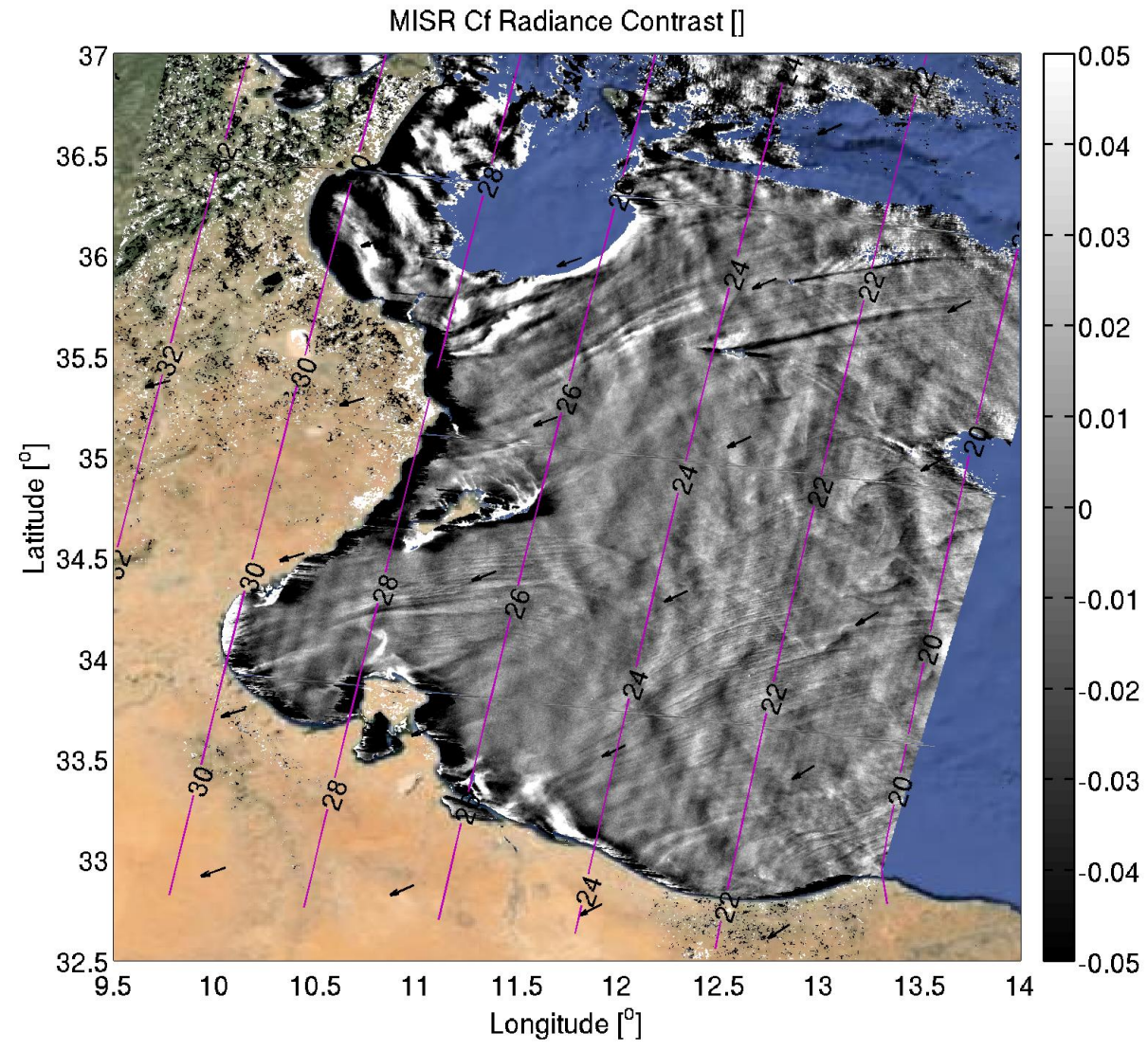
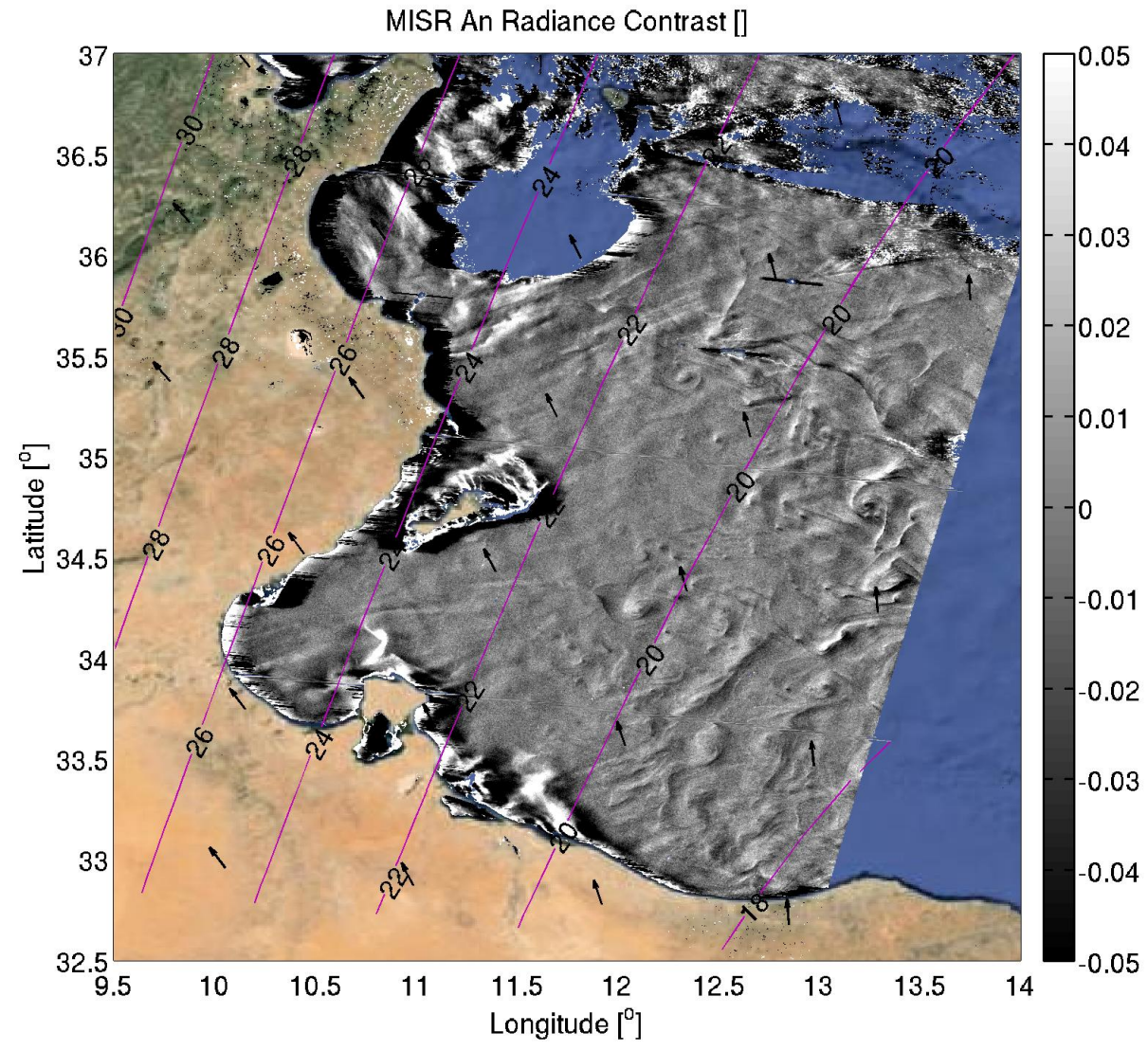
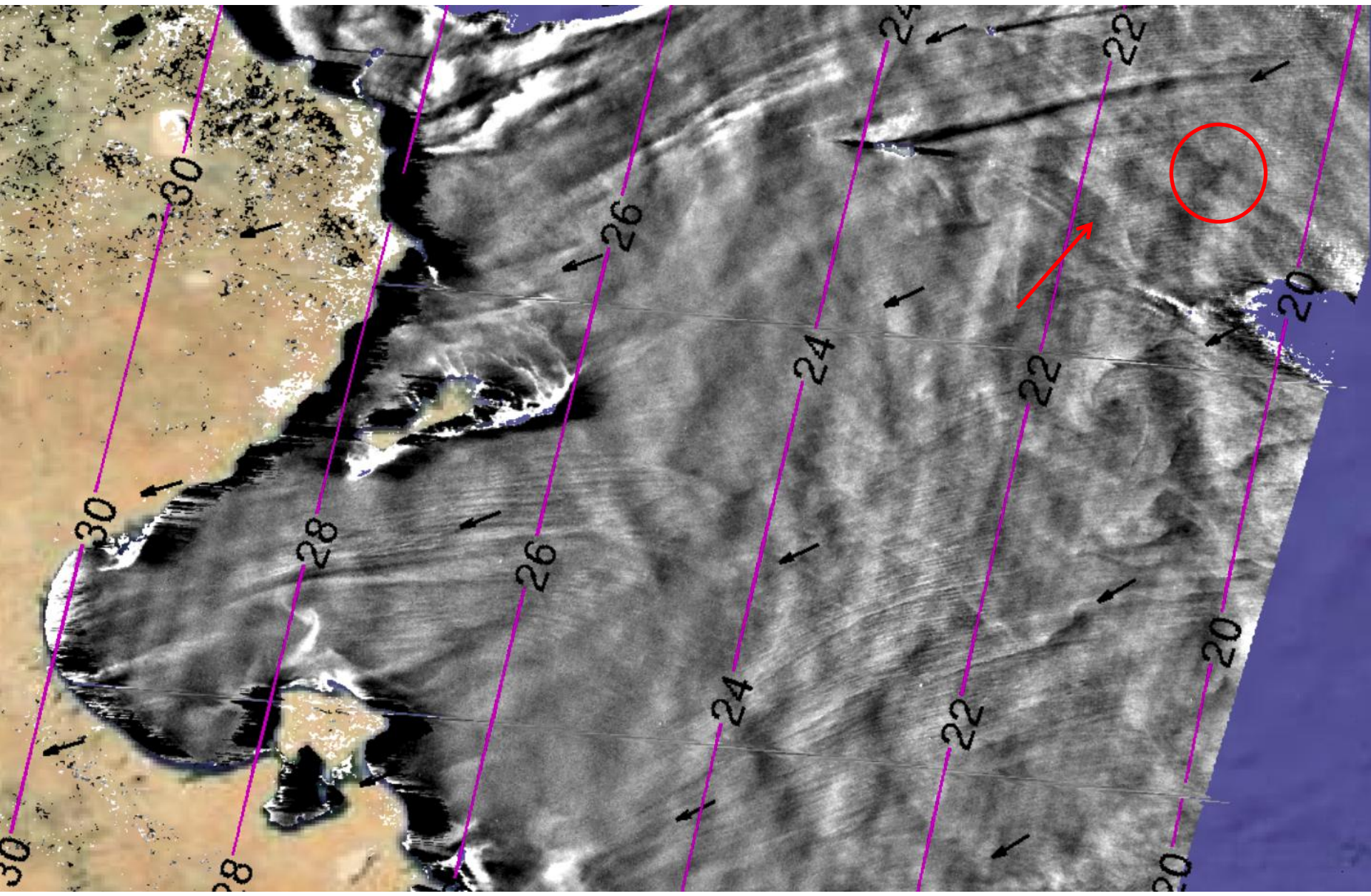


Image pair 6: Surface roughness from MISR satellite
Gulf of Lybia, 2012-03-03



Zoom



Zoom

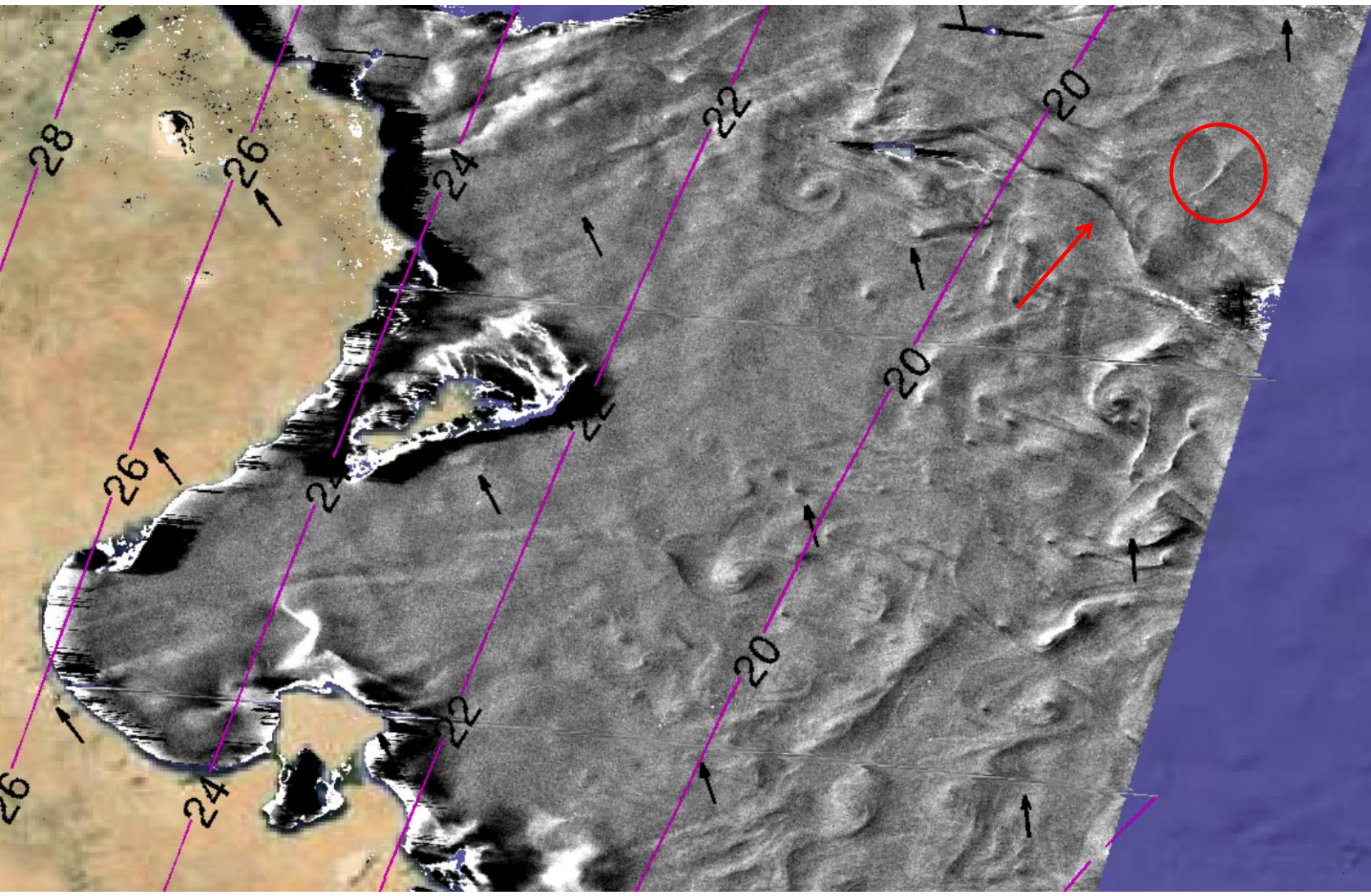


Image pair 7:
Surface roughness from
Airborne cameras,
Gulf of Mexico,
2016-02-11
(during CARTHE LASER
experiment)

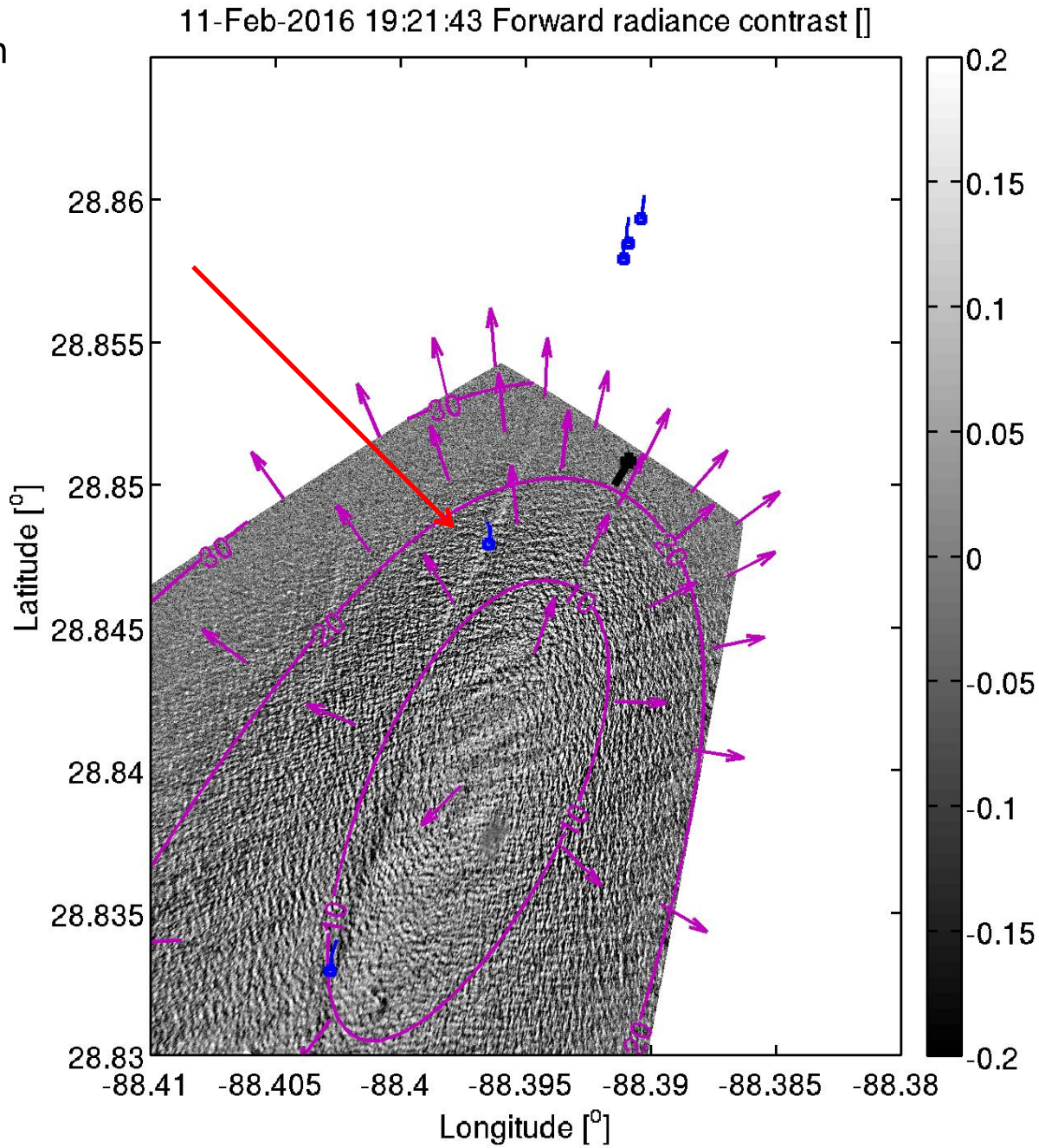


Image pair 7:
Surface roughness from
Airborne cameras,
Gulf of Mexico,
2016-02-11
(during CARTHE LASER
experiment)

