

## Can the hemoglobin characteristics of vesicomid clam species influence their distribution in deep-sea sulfide-rich sediments? A case study in the Angola Basin

Decker Carole <sup>1,2,3</sup>, Zorn N. <sup>4</sup>, Le Bruchec J. <sup>1</sup>, Caprais Jean-Claude <sup>1</sup>, Potier N. <sup>4</sup>, Leize-Wagner E. <sup>4</sup>, Lallier F.H. <sup>2,3</sup>, Olu Karine <sup>1</sup>, Andersen A.C. <sup>2,3</sup>

<sup>1</sup> IFREMER, Laboratoire Environnement Profond, Unité de Recherche Etude des Ecosystèmes profonds, F-29280 Plouzané, France

<sup>2</sup> UPMC Université Paris 06, UMR 7144, Équipe Adaptation et Biologie des Invertébrés en Conditions Extrêmes, Station Biologique, F-29680 Roscoff, France

<sup>3</sup> CNRS, UMR 7144, Adaptation et Diversité en Milieu Marin, Station Biologique, F-29680 Roscoff, France

<sup>4</sup> Laboratoire de Spectrométrie de Masse des Interactions et des Systèmes, UMR 7140, CNRS-ULP Chimie de la Matière Complexe, F-67008 Strasbourg, France

Email addresses : [caroledecker1@gmail.com](mailto:caroledecker1@gmail.com) ; [andersen@sb-roscoff.fr](mailto:andersen@sb-roscoff.fr)

### Abstract :

Vesicomids live in endosymbiosis with sulfur-oxidizing bacteria and therefore need hydrogen sulfide to survive. They can nevertheless live in a wide range of sulfide and oxygen levels and depths, which may explain the exceptional diversity of this clam family in deep-sea habitats. In the Gulf of Guinea, nine species of vesicomid clams are known to live in cold-seep areas with pockmarks from 600 to 3200 m deep, as well as in the organic-rich sediments of the Congo deep-sea fan at 5000 m deep. Our previous study showed that two species living in a giant pockmark have different oxygen carriers, suggesting different adaptations to hypoxia. Here, we studied the hemoglobin structure and oxygen affinity in three other species, *Calyptogena valdiviae*, *Elenaconcha guinness* and *Abyssogena southwardae* to determine whether the characteristics of their oxygen carriers contribute to their distribution in sulfide-rich sediments at a regional scale. Documenting pairwise species associations in various proportions, we give a semi-quantitative account of their local distribution and oxygen and sulfide measurements at seven sites. Mass spectrometry showed that each vesicomid species has four intracellular monomeric hemoglobin molecules of 15–16 kDa, all differing in their molecular mass. As expected, the monomers showed no cooperativity in oxygen binding. Their oxygen affinities were very high (below 1 Torr), but differed significantly. *C. valdiviae* had the highest affinity and was dominant in the Harp pockmark, the site with the lowest oxygen content (half the value of fully oxygenated water). *A. southwardae* dominated in the Congo Lobe area, the site with the deepest sulfides. We discuss how hemoglobin may favor an active, vertical distribution of vesicomids in sulfide-rich sediments.

**Keywords :** hemoglobin, mass spectrometry, oxygen affinity, symbiont-bearing bivalve, blood-clams, cold seeps, sulfide-rich sediments

## Introduction

Vesicomylid clams are heterodont bivalve mollusks that live worldwide from 100 to 9500 m depth and commonly colonize hydrothermal vents, cold seeps and whale falls (Krylova and Sahling, 2010; Sibuet and Olu, 1998). To date, about 120 different species have been identified from morphological diagnosis, COI sequencing or both (Audzijonyte et al., 2012; Krylova and Sahling, 2010). In the vesicomylid family, the Pliocardiinae subfamily has a broad bathymetric distribution at the oceanic scale, but only one genus is eurybathic (the small-sized *Isorropodon*); all the other large-sized genera inhabit either the bathyal or abyssal zones (Krylova and Sahling, 2010). Several authors have argued in favor of a depth-segregation hypothesis (Goffredi et al., 2003; Kojima and Ohta, 1997; Olu et al., 1996), mainly driven by species-specific differences in egg buoyancy, larval development and

dispersal, but possibly also due to other pressure-related physiological or biochemical adaptations among juveniles and adults (Goffredi et al., 2003).

At the species level, several studies have demonstrated a trans-oceanic distribution for genetically similar species (Audzijonyte et al., 2012; Decker et al., 2012b; Kojima et al., 2004; Teixeira et al., 2013; van der Heijden et al., 2012). Audzijonyte et al. (2012) identified seven species with a trans-Pacific distribution, and two species with an Indo-Pacific distribution. *Abyssogena southwardae* shows a trans-Atlantic distribution along the equatorial belt, colonizing seeps on the western and eastern continental margins, as well as vents on the Mid-Atlantic Ridge (Teixeira et al., 2013). This ocean-wide species distribution indicates either long-distance larval dispersal and/or unknown stepping-stone habitats that enable gene flow to and from either side of the ocean on a generational time-scale (Audzijonyte et al., 2012; Teixeira et al., 2013).

At a regional scale, studies have demonstrated that the environmental characteristics of the biotope likely account for the patchy distribution of species (Barry et al., 1997; Goffredi and Barry, 2002; von Cosel and Olu, 2009). More locally, the distribution of two species co-occurring in unequal proportions in a cold-seep site may arise from their different biological or physiological characteristics. For example in the Monterey Bay, *Calyptogena pacifica* (Dall, 1891) and *Phreagena kilmeri* (Bernard, 1974) seem to have different reproductive strategies (Lisin et al., 1997), different physiological metabolisms with regard to sulfide binding in the hemolymph (i.e. "blood") and different sulfide uptake by symbionts (Barry et al., 1997; Goffredi and Barry, 2002). In the Gulf of Guinea, *Laubiericoncha chuni* and *Christineconcha regab* differ by the presence or absence of an oxygen carrier in their hemolymph, an adaptation to hypoxic events (Decker et al., 2014).

Sulfide and oxygen are two main factors in vesicomysid biology, because these clams live in symbiosis with sulfide-oxidizing bacteria that are maternally acquired during embryogenesis (Cary and Giovannoni, 1993; Endow and Ohta, 1990; Szafranski et al., 2014). The symbionts are housed within bacteriocytes in the gills, and provide the bivalve with carbohydrates (Cavanaugh, 1983; Fiala-Médioni and Le Pennec, 1987). To fuel its symbionts, the clam takes up sulfides via its foot buried in

the sulfide-rich sediments, whereas oxygen and carbon dioxide are supplied by the seawater, above the sediments, flowing through the siphons (Arp et al., 1984). These elements are then distributed to all tissues via the hemolymph. To date, the hemolymph of seven vesicomysid species has been analyzed and all, except one, show hemoglobin in their red blood cells (Kawano et al., 2003; Suzuki et al., 2000; Suzuki and Ohta, 2000; Suzuki et al., 1989a; Suzuki et al., 1989b; Terwilliger et al., 1983; Zal et al., 2000). In vesicomysids, the structure and number of hemoglobins vary among species, from monomers in *L. chuni* (Decker et al., 2014) to tetramers in "*Calypdogena*" *magnifica* Boss and Turner, 1980 (Terwilliger et al., 1983; Zal et al., 2000). Variations in hemoglobin structure affect oxygen affinity. Circulating hemoglobin greatly enhances oxygen transport, but may also promote oxygen storage during hypoxic periods (Weber and Vinogradov, 2001). Thus, the preliminary hypothesis of our study was that the most "efficient" hemoglobin (i.e. able to bind oxygen with the greatest affinity) facilitates survival in the most extreme habitat (i.e. subject to hypoxia with reduced or sulfide-rich sediments). To test this hypothesis, we analyzed the distribution of the various vesicomysid species in the Gulf of Guinea.

The present study investigated whether the characteristics of the vesicomysid hemoglobins drive the observed distribution of vesicomysid species in various sulfide-rich environments on the Gabon and Congo margins. The clam habitats are found either in cold seeps in pockmarks or in areas of organic matter accumulation in the Congo deep-sea fan, both of which are more or less hypoxic and reduced habitats. We analyzed the hemoglobins of three vesicomysid species (*Calypdogena valdiviae*, *Elenaconcha guiness*, and *A. southwardae*) to (1) detail their molecular structure and (2) measure their oxygen affinity. We compiled our data with those from a previous globin study on *L. chuni* and *C. regab* at the Regab pockmark (Decker et al., 2014). We compared our results with the clam species distribution along the bathymetric gradient, taking into account the chemical characteristics of their biotopes, especially the oxygen and sulfide levels around the clams.

## Study Area

The analysis was performed on three vesicomysid species from the Gulf of Guinea. In this gulf, four clam species have been known since the Valdivia expedition in the 1930s (Thiele and Jaeckel, 1931). Recent explorations using a remotely operated vehicle (ROV) increased the number of known vesicomysid species to nine (Rodrigues et al., 2012; Teixeira et al., 2013; von Cosel and Olu, 2009), each associated with a different geological setting (Table 1). Six of them have been extensively studied for their molecular taxonomy, biology, or symbiosis (Decker and Olu, 2012; Decker et al., 2013; Decker et al., 2014; Duperron et al., 2012; Rodrigues et al., 2012; Teixeira et al., 2013). The various chemosynthesis-based ecosystems known so far in the Gulf of Guinea have a broad bathymetric range: from 500 m depth for the Guinness pockmarks along the Gabon margin, to 5000 m in the terminal lobes of the Congo deep-sea fan (Table 1, Figure 1) (Olu-Le Roy et al., 2007; Ondréas et al., 2005; Sahling et al., 2008; Sibuet and Vangriesheim, 2009). Several pockmarks with sulfide-rich sediments and carbonate concretions (Sibuet and Vangriesheim, 2009) have been found in the Guinness pockmark area (Figure 1). Despite their great patchiness and apparently low methane fluxes, (Sibuet and Vangriesheim, 2009), seeps support a large diversity of chemosynthetic symbiont-bearing taxa. Among the vesicomysids, three species have been recorded: *C. valdiviae* (Thiele and Jaeckel, 1931), *E. guiness*, Cosel and Olu 2009 and *Isorropodon bigoti*, Cosel and Salas 2006. The two former species colonize two different pockmarks (Harp and Kilkenny), where variable fluid emissions may explain their distribution (von Cosel and Olu, 2009). The small *I. bigoti* clam is rarely observed and is buried in the sediment at Kilkenny (Rodrigues et al., 2012).

About 500 km further south, Worm Hole and Regab are two large pockmarks or pockmark clusters at a similar depth (about 3000-3200 m), about 100 km apart (Figure 1). Regab is on the northern slope of the Congo canyon, and its faunal assemblages have been described in detail (Menot et al., 2010; Olu-Le Roy et al., 2007). Worm Hole and Regab share several species, such as the mussel *Bathymodiolus boomerang* and the siboglinid tubeworm *Escarpia southwardae* (Olu-Le Roy et al., 2007; Sahling et al., 2008). However, the vesicomysid species differ: *C. regab* and *L. chuni* both live in

Regab but are not found at Worm Hole, which seems to be colonized only by a few clustered individuals of *A. southwardae* (Krylova et al. 2010;(Teixeira et al., 2013).

West of Regab, the terminal lobes of the Congo deep-sea fan (Figure 1) are located 750 km away off the coast at 5000 m depth. They are fed by turbidites containing labile organic matter delivered by the Congo River (Rabouille et al., 2009; Savoye et al., 2009). This material is mostly of terrigenous origin, with an estimated terrestrial contribution as high as  $79\pm 3\%$  in sites on or near the active channel (Stetten et al., 2015). The lobe area is characterized by high to very high sedimentary rates for this depth (0.6 to 22 cm yr<sup>-1</sup>, i.e. 2-3 orders of magnitude higher than values usually recorded at these depths) (Rabouille et al., in press this volume). This sedimentation results in sediments with very high organic carbon content (3 to 5% in wet weight), compared with what is usually found in abyssal sediments (generally <0.3% and rarely 1%) (Stetten et al., 2015). These lobes are characterized by very patchy colonization of chemosynthesis-based ecosystems, including microbial mats and vesicomysid beds (Sen et al., submitted). Two different species of vesicomysids have been sampled there: *A. southwardae* and *C. regab* (Decker et al., 2014). Both species are associated with sulfide-oxidizing symbionts (Decker et al., in prep.), which are sustained by sulfides produced locally from anaerobic methane oxidation and oxidation of organic matter (Pastor et al., Submitted).

## Methods

### Sampling strategy

Vesicomysid bivalves were collected during two scientific cruises aboard the R/V *Pourquoi Pas?* using the ROV *Victor 6000*: the WACS cruise (in January-March 2011, chief scientist Karine Olu-Le Roy) and the CONGOLOBE cruise (from December 2011 to January 2012, chief scientist: Christophe Rabouille). *C. valdiviae* and *E. guinness* specimens were collected in the Guinness area on the Harp and Kilkenny pockmarks (Table 2, Figures 1 and 2). *A. southwardae* was collected at the Worm Hole pockmark and in the terminal lobes of the Congo deep-sea fans (CoL02 (Site A), CoL03 (Site F), CoL09 (Site C) and

CoL11 (Site B)) (Table 2, Figure 2). *C. regab* was also collected in the terminal lobes of the Congo deep-sea fan together with *A. southwardae*. Specimens were collected using nets and blade cores manipulated by the ROV. Total clam densities per square meter were estimated from blade core-samples (0.0303 m<sup>2</sup>) (1 to 4 replicates). The proportion of each species was estimated by totaling the number of individuals of each species counted in nets and blade cores at each site. The authors (KO and CD) sorted the collected species, and Dr. Elena Krylova, a specialist in vesicomysid taxonomy, checked their identifications on the basis of morphological criteria. Molecular identifications were also done to ensure the identification of the species from the Congo deep-sea fans (Teixeira et al., 2013; S. Arnaud-Haond, personal communication).

#### **Chemical measurements in the habitats**

Tube-core samples (6 cm diameter, 30 cm length) were taken in the clam aggregates (beds) to characterize the oxygen and sulfide profiles of the studied sites (Pastor et al., Submitted). The CALMAR benthic chamber (Caprais et al., 2010) was also deployed on vesicomysid beds to measure gas exchange (oxygen and methane) at the sediment-water interface (Khripounoff et al., 2015; Khripounoff et al., in press this volume).

Oxygen microsensors (Unisense) were used to measure oxygen concentration profiles in the sediment cores sampled by the ROV, following the method described in Rabouille et al. (2009). For the other tube cores, pore water was extracted at a resolution of 1-2 cm using Rhizon moisture samplers (Seeberg-Elverfeldt et al., 2005) inserted into the holes of pre-drilled push-core liners. ZnCl<sub>2</sub> was added immediately after pore water extraction for sulfide analysis. Oxygen concentration in the water column above vesicomysids was obtained by chemical analysis of 10 ml of water sampled *in situ* with the CALMAR using the modified Winkler titration method (Carritt and Carpenter, 1966). Methane concentration was determined using static headspace gas chromatography (HSS-GC) (Sarradin and Caprais, 1996). At the laboratory, pore water sulfide concentrations were analyzed using standard photometric procedures (Cline, 1969; Fonselius, 1983).

**Hemoglobin analyses**

After retrieval, bivalves were quickly transferred to a cold room at 4°C. Three specimens of *C. valdiviae* and *E. guiness* and five of *A. southwardae* (3 from the Lobe area and 2 from Worm Hole) were dissected for the hemoglobin analysis. The others were identified, counted, measured and stored in 4% buffered formalin. Hemolymph was sampled using a 1 mL syringe, inserting the needle between the valves at the anterior end of the clam, or after opening it (Table 2). All dissected samples were frozen in liquid nitrogen and stored at -80°C in the laboratory until further use. For each of the three vesicomysid species, three individuals (exceptionally two) were successively analyzed by high-performance liquid chromatography (HPLC), mass spectrometry (MS) and in the diffusion chamber (Table 2). We purified the hemolymph by HPLC (size-exclusion chromatography, i.e. SEC) on a Superose-12 10/300 GL Tricorn column (GE Healthcare), with a fractionation range of 1 to 300 kDa. We performed two types of SEC electrospray-ionization mass spectrometry (ESI-MS) analyses: one in native conditions and one in denaturing conditions. In the native conditions, we used 50 mM ammonium acetate (pH 6.2) for SEC elution and for ESI-MS. Ammonium acetate preserves the non-covalent interactions between the molecules in their original state and allows identification of the various hemoglobin molecules in the exact multimeric state they have in the hemolymph. The second analysis in denaturing conditions aims to separate the multimers, but not break the disulfide bridges. For this analysis, we purified the hemolymph samples by SEC in a saline HEPES buffer, and then performed the ESI-MS analyses in a mix of water/acetonitrile/formic acid to expose the inner structure of the molecule for better ionization. Further technical conditions about ESI-MS are detailed in (Decker et al., 2014).

Oxygen-binding affinities of hemoglobins were obtained in a gas-diffusion chamber (Sick and Gersonde 1969) as described in (Decker et al., 2014). The pH was measured with a microelectrode. Oxygen-binding properties and pH measurements were carried out at 5°C. Technically, 5°C is the lowest possible temperature to measure the oxygen partial pressure ( $PO_2$ ) at which hemoglobin is



half saturated with oxygen ( $P_{50}$ ) and avoid water condensation in the sample. Therefore, this is the closest possible temperature to the deep-seawater temperature (2.6°C at Regab pockmark (Decker et al., 2012a), 5.3°C at Guinness and 2.4°C in the Lobe area).

Values of  $P_{50}$  and  $n_{50}$  (Hill's cooperativity coefficient at  $P_{50}$ ) were derived from the linear regression of the Hill plots ( $\log(S/1-S)=f(\log(PO_2))$ ) for saturation values in the linear portion of the curve, i.e. at saturation values between 20-80%.

### Statistical methods

We used a Kruskal-Wallis test followed by a Behrens-Fisher (BF) post-hoc test for non-parametric multiple comparisons of the  $P_{50}$  values between species. All analyses were performed using the free open source R Environment (R Development Core team, 2010). The NPMCMR library was used for non-parametric multiple comparisons (Helms and Munzel, 2008)

## Results

### Habitat characterizations and clam densities

Seven sites were sampled along the Congo-Angola margin in three areas: Guinness, Worm Hole and the Congo deep-sea fan (Table 3, Figure 2).

#### Guinness area

In the Guinness area (Fig. 1), vesicomysids were observed in the two pockmarks Harp and Kilkenny, but the other pockmarks only revealed bivalve shells and concretions. Harp and Kilkenny are relatively small, about 300 m diameter and are located 2 km apart, at 580 to 680 m depth, respectively. The density of vesicomysids was lower at Harp than at Kilkenny (165 vs 561 ind.m<sup>-2</sup> respectively) (Table 3). At Harp, we observed a few small beds (about 50 cm diameter) of *C. valdiviae* (Fig. 2A). In contrast, Kilkenny was colonized by numerous small patches of *E. guinness* and *C. valdiviae*, which appeared to be segregated among the microbial mats, which covered an area of about 15 m in diameter (Figure 2B). Both pockmarks were characterized by low oxygen concentrations in the water column (about

140  $\mu\text{M}$ , Table 3), but had the deepest measured oxygen penetration depths in the sediment (0.65 cm, Table 3). At Kilkenny, high sulfide concentrations and fluxes were measured in the vesicomysid bed dominated by *E. guiness* (Table 3, Figure 2B), whereas there were no sulfide fluxes at the Harp pockmark, where only *C. valdiviae* was sampled (Table 3, Figure 2A).

#### Worm Hole area

The Worm Hole pockmark (Fig. 1) is found at 3090 m depth. The sulfide concentration was high in the sediment with a maximal value at 14 cm among the few isolated individuals of *A. southwardae* that colonized the area (Table 3, Figure 2C).

#### The Congo deep-sea fan (Lobe area sites)

In the canyon of the Congo deep-sea fan, *C. regab* and *A. southwardae* co-occurred in mixed patches, but in various densities and proportions (Table 3, Figure 2D-G). At site B, which was located in a lobe not currently in the axis of the Congo channel, we sampled a patch of about 130 ind.m<sup>-2</sup> with both species, where *A. southwardae* dominated (Figure 2D). In contrast, at sites A, F and C located in the axis of the Congo channel, *C. regab* was always the dominant species (Table 3). At site A, vesicomysids formed dense aggregates of about 750 ind.m<sup>-2</sup> (Table 3) along the southern slope of the canyon in the “Vesico Bay” area (Figure 2E). At site F, vesicomysids were found in low density (about 120 ind.m<sup>-2</sup>) surrounding microbial mats on the top of a small hill (Figure 2F). At site C, vesicomysids were sampled in a very dense bed (about 1390 ind.m<sup>-2</sup>), in a heart-shaped patch (Table 3, Fig. 2G).

In all four study sites in the Lobe area, oxygen concentrations in the water above the vesicomysids ranged from 215 to 240  $\mu\text{M}$  (Table 3). Oxygen penetration in the sediment was deeper at sites B and F than at the other sites (Table 3). The sulfide concentration in the sediment was highest at site A (8 mM) where it peaked at 10 cm below surface, and the sulfide peak (maximum concentration within the upper layer of the sediments) varied from 2.5 cm at site F to 17 cm at site B.

### Structural analysis of the hemoglobins

The three study species had hemoglobin in their blood cells. The volume of blood collected from a single clam ranged from 600  $\mu$ l to 1.5 ml in *C. valdiviae* and *E. guiness*, and from 2 to 10 ml in *A. southwardae*. The SEC chromatograms of the hemolymph of all three species are shown in Figure 3. On all spectra, the first minor fraction close to the exclusion volume of the column absorbed mainly at 280 nm, corresponding to protein aggregates. The heme protein profiles of the hemolymph from *C. valdiviae* and *E. guiness* showed two very close peaks eluting in the narrow time range of 25-27 min (Figure 3A, B), but *A. southwardae* from both sites showed only a single peak (Figure 3C, D). This single peak and each fraction of the double peaks were purified and analyzed separately using MS. For all vesicomysid species, the MS analysis showed that each peak contains monomers of slightly varying masses within the range of 15-16 kDa. Regarding the double peaks of *C. valdiviae* and *E. guiness*, the peak that eluted first contained a mixture of two monomers: the heaviest and the lightest monomers characterized for each vesicomysid species. The peak that eluted last contained a mixture of all four monomers identified in each respective species (Table 4). Moreover, measurements on the native hemolymph of *C. valdiviae* and *E. guiness* showed the presence of only monomeric units in the natural state of the hemolymph, and no dimerization (Figure 4A, B). The single peak in *A. southwardae* also corresponded to four different monomers of about 15-16 kDa that showed no dimerization either.

The expected error on a mass result is about 0.005% according to the ESI-MS instrument specifications. On each sample, several mass measurements were taken and the results were averaged to estimate mass precision. A comparison of measurements showed that these percentages of error and the observed precision can identify similar masses as being identical molecules with an uncertainty of about 1 Da. We thus sorted the monomers by increasing molecular mass and called them globin G1, G2, etc. The masses of the globins of *C. valdiviae* and *E. guiness* were very similar, but those of *E. guiness* were always 6 Da lighter than those of *C. valdiviae* (with the exception of chain 4 that was only 4 Da lighter). *A. southwardae* also had four different

monomeric globin chains (Figure 4C), with masses that were identical (at the precision of 1 Da) among individuals from the same site, but only two globin masses were common to all specimens sampled at Worm Hole and Lobe B (Table 4).

### Oxygen-binding properties

Oxygen-binding properties were measured on the purified hemoglobins (Figure 5) at 5°C and pH 6.5. The value of 6.5 was the pH measured in the hemolymph just after collection on board at 5°C. The oxygen-binding affinities were very high and lower than 1 Torr for all three species (Figure 5). *C. valdiviae* showed the greatest affinity with a  $P_{50}$  of  $0.13 \pm 0.01$ , which was significantly lower than that of the other species, with values of  $0.24 \pm 0.04$  for *E. guiness* and  $0.21 \pm 0.06$  and  $0.32 \pm 0.03$  for *A. southwardae* at Worm Hole and site xx, respectively (Kruskal-Wallis test,  $p < 0.05$  and non-parametric pairwise multiple comparisons,  $p < 0.001$ ). All measurements were significantly different, except the values of *A. southwardae* from the Lobe area and *E. guiness* from the Guinness area (non-parametric multiple comparisons,  $p = 0.9$ ). There was no cooperativity ( $n_{50}$ ) in any of the molecules because  $n_{50}$  was always close to 1.

### Discussion

In the Gulf of Guinea, four out of five analyzed vesicomysid species have intracellular circulating hemoglobin (this work and Decker et al, 2014). They live at 600 to 5000 m depth. Other studied vesicomysids include four species from cold seeps along Japan (1000-3600 m) and the vent species *C. magnifica* from the East-Pacific Rise (2600 m depth) (See Table 4 for details). The extensive depth range of clams with hemoglobin (and even the one without), suggests that circulating hemoglobins in vesicomysid clams are not the factor that determines the distribution of the vesicomysids species between the bathyal and the abyssal zones. Nonetheless, in the Gulf of Guinea, we recorded *C. valdiviae* and *E. guiness* only at Guinness pockmarks (580-680 m depth), whereas *A. southwardae*, *L.*

*chuni* and *C. regab* (the latter with no hemoglobin) were found in deeper pockmarks (3000 m depth) or lobe areas (5000 m depth), confirming the previously observed depth segregation (Cosel and Olu 2009). Taken together with what is recorded worldwide, *C. valdiviae* and *E. guiness* appear to be “bathyal” species, whereas *A. southwardae*, *L. chuni* and *C. regab* appear to be “abyssal” species (Table 1). This species segregation according to depth may be attributable to the distance of larval dispersal and larval tolerance to the constraints of the pelagic environment for abyssal species, or pressure tolerance for bathyal species. However, segregation according to larval dispersal cannot involve hemoglobin because veliger larva do not have circulating hemoglobin. It not known when, after settlement, hemoglobin is translated by the vesicomysid genome nor the clam size (probably very small) at which hemoglobin acts as functional oxygen carrier and storer. Although this study cannot answer this question, it is known that hemoglobin can store oxygen and persist in hypoxic conditions during vesicomysid benthic life stages. Their molecular masses can distinguish their hemoglobin structures, indicating their properties as oxygen carriers, and thus their potential resistance to hypoxic events in the habitats in which the larvae settle.

#### ***Monomeric hemoglobin structures differ between each species***

*C. valdiviae*, *E. guiness* and *A. southwardae* from the Gulf of Guinea have four different monomeric globin chains of 15-16 kDa in their hemolymph, and each had a different, distinct mass (Table 4). In contrast, *L. chuni* from the Regab pockmark has only three types of monomers within the same mass range of 15 kDa (Decker et al., 2014). A monomeric structure is also typical of the hemolymph of *P. nautili* from the Japan Trench, but its molecular mass is greater: about 18 kDa (Kawano et al, 2003). Three other cold-seep vesicomysids from Japan (*A. kaikoi*, *P. soyoae* and *P. tsubasa*) likely have globins of about 15-16 kDa, which are associated as homodimers (Kawano et al., 2003; Suzuki and Ohta, 2000; Suzuki et al., 1989a). In contrast, the vent clam *C. magnifica* possesses a tetrameric hemoglobin of about 68 kDa, made up of various covalently bound homotetramers, homodimers or heterodimers (Zal et al., 2000) (Table 4). When the blood becomes concentrated (in experimental or

in natural conditions) monomers tend to dimerize, and dimers tend to become tetramers (Kraus and Wittenberg, 1990; Suzuki and Ohta, 2000; Suzuki et al., 1989a; Zal et al., 2000). However, we observed only monomers in the native hemolymph of our vesicomysid species. A multimeric state enables intra-molecular cooperativity (i.e. enhances oxygen binding affinity, once the first oxygen molecule is bound). A monomeric state does not have this advantage, as confirmed by the value of their Hill coefficients, which were all close to unity.

The molecular masses of monomers differed among the species, which may reflect differences in their primary structures due to their various phylogenetic origins. Although all vesicomysids originate from a common ancestor that diverged between vents and seeps in the Cenozoic era (40 millions years ago) (Amano and Kiel, 2007; Peek and Gustafson, 1997), none of the analyzed vesicomysid species in the Gulf of Guinea are closely related, even the species that co-occur (Decker et al., 2012b). They are not related to the above-cited vesicomysids species from Japan either. The multiplicity of globins is frequent in mollusks, because most bivalves possess two hemoglobins with different affinities (Nagel, 1985; Weber and Vinogradov, 2001), and two slightly different molecular structures may lead to slightly different tridimensional shapes of heme pockets, thereby influencing oxygen binding affinity. The globin diversity among vesicomysid clams may thus enable the modulation of the oxygen affinity of monomers to match to the oxygen levels of the surrounding environment. This diversity may either result from structural genetic diversity at the population level, or arise from modulations in the transcription of the globin genes according to individual metabolic variation and/or due to environmental changes, as shown in the vent tubeworm *Ridgeia piscesae* living on chimneys or on basalts (Carney et al., 2007). Our results in *A. southwardae* show that globin masses can also vary within the same species between individuals sampled at two different sites (e.g. Worm Hole and the Lobe area), whereas within a given site, the masses were identical among individuals (with the precision of 1 Da). Only two of the four globin chains (G''3 and G''4) were similar between the individuals from different sites. The G''3 and G''4 chains differ by 16 Da, indicating that either G''4 is an oxidized form of chain G''3, or that their primary structures are different. The two

other pairs of chains (G"1a, G"2a; G"1b, G"2b) differed between the two sites. However, the study of the mitochondrial cytochrome oxidase subunit I gene of *A. southwardae* from Worm Hole and Lobe confirmed that the specimens of both areas belong to the same taxon. However, because only a few individuals were sampled at Worm Hole, it is difficult to conclude as to the genetic divergence between the two populations (Teixeira et al., 2013). Genetic divergence may explain some of the inter-site variation between globin masses, but this hypothesis requires confirmation with an analysis on a larger number of specimens.

#### ***Hemoglobins with a very high range of oxygen-binding affinities***

The hemoglobins from the three vesicomys species have very high affinity, all within a range below 1 Torr (Figure 5). These values are among the highest levels found in bivalves (Figure 6), but within the range of the values observed for cytosolic gill hemoglobin of symbiont-bearing bivalves living in the sulfide-rich sediments of shallow waters, such as solemyids and lucinids (Dando et al., 1985; Kraus et al., 1996; Weber and Vinogradov, 2001). Mollusk cytosolic hemoglobins usually have higher oxygen affinities than circulating hemoglobins (Weber and Vinogradov, 2001). For example, the solemyid *Myrtea spinnifera* lives at 33 m depth in the silty sand of Ypsesund (close to Bergen, Norway), where free sulfides in the upper 10-15 cm of sediments can reach concentrations of up to 11  $\mu\text{M}$  in the interstitial water, but bound sulfides (i.e. acid-labile) are as high as 625  $\mu\text{M dm}^{-3}$  at 11 cm depth (Dando et al., 1985). However, these values are about 10-100 times lower than the sulfides measured around the vesicomys in the seeps, further emphasizing the very high oxygen affinities found in cold-seep clams.

When comparing circulating hemoglobin, all the measured  $P_{50}$  values were much lower than those found for the vent clam *C. magnifica* ( $P_{50} = 7.6 \pm 0.23$  Torr at pH 6.78 and 10°C) (Terwilliger et al., 1983), showing that cold-seep clams have greater oxygen affinity than this vent clam. However, the oxygen concentrations at hydrothermal vents in the environment of *C. magnifica* (about 110  $\mu\text{M}$  in

the water (Arp et al., 1984) are comparable to what has been measured in the Guinness area, which is about half the standard concentration in coastal water (Aminot and K erouel, 2004). The greater affinity of seep clams may confer allow them to burrow deep inside the sediments and remain separated from the oxygenated water source for some time, whereas burrowing in the vent basalt is not possible for *C. magnifica*. Sulfide concentrations are usually high at vents (Luther et al., 2012) because sulfide is a component of the hydrothermal fluids, whereas sulfide content is nil or very low in the bottom water at seeps, being produced by anaerobic methane oxidation in the 15 cm below the seafloor (Cambon-Bonavita et al., 2009; Cruaud et al., 2015; Elvert et al., 2005; Pop Ristova et al., 2012) where vesicomys take up sulfides via their foot (Arp et al., 1984). Although all found within a narrow range, the affinities of vesicomysid hemoglobin from the Gulf of Guinea species were clearly distinct. We hypothesize that their specificities are related to the chemical conditions of their habitats (see below).

***High affinity of hemoglobins in bathyal species is an adaptation to low oxygen levels in ambient waters***

Among all species studied in the Gulf of Guinea, *C. valdiviae* colonizing the Guinness and Harp pockmarks had the hemoglobin with the highest affinity ( $0.13 \pm 0.01$ ) for oxygen of all vesicomysid species, including *L. chuni* previously studied in Decker et al. (2014) ( $0.45 \pm 0.18$ ). An interesting observation is that *C. valdiviae* dominated where the oxygen concentrations in the water column were the lowest, i.e. at the Harp pockmark (Table 3 and Figures 7, 8). The oxygen concentration in the water at Harp is about 100  $\mu\text{M}$  lower than in the Lobe area and in the deeper pockmarks, and is only about half of that in fully oxygenated coastal sea water (at 20°C and salinity of 34) (Aminot and K erouel, 2004). The other species colonizing the Guinness pockmarks, *E. guiness*, also shows very high affinity, slightly lower than *C. valdiviae*. It was only sampled at the Kilkenny pockmark, where it was dominant (Table 2, 3). The water column above this pockmark also showed relatively low oxygen values that were only slightly greater than those at Harp. Moreover, high sulfide concentrations were



measured in vesicomysid beds (the highest of all vesicomysid biotopes studied in this paper, both below the surface of the sediment and in the top first 15 cm of the sediment). Moreover, the Guinness site showed the only positive sulfide flux through the sediment-water interface measured in this study (Table 3). The sulfide concentration at Kilkenny was one of the highest observed in the vesicomysid beds at cold seeps, with a value similar to those measured at the Hydrate Ridge associated with *C. pacifica* and *P. kilmeri* (Sahling et al., 2002). The upward sulfide flux from the sediment into the water may result in anoxic periods when local currents bring these fluid flows around the clam siphons. Thus, among all the sites we studied in the Gulf of Guinea, the two pockmarks at Guinness appeared to be the most extreme habitats with high sulfide and low oxygen levels, and this may explain why the two species with the highest hemoglobin affinity live in these pockmarks.

***Hemoglobin in *Abyssogena southwardae* as an advantage to dig for deep sulfides***

The blood clam *A. southwardae* was abundant in the lobes of the Congo deep-sea fan, where it was the dominant species at site B. It was the only species sampled at the Worm Hole pockmark where only three individuals were sampled. The structure of its globin chain differed between both areas, suggesting a relationship with hemoglobin affinity. For example, hemoglobin affinity was significantly higher for individuals living in the Lobe area than for those living in the Worm Hole pockmark (Figure 5). Oxygen levels in the water column (measured in the Lobe clam beds) were only slightly lower than the oxygen levels in surface waters, and sulfide levels close to the interface (1 cm depth) were very low in patches of the Lobe area as well as at Worm Hole. Therefore, oxygen and sulfide concentrations in the water around the abyssal vesicomysids may not be very limiting in comparison with other sites. The maximum sulfide concentrations measured within the sediments in *A. southwardae* patches were relatively high such as at Worm Hole, but were within the range of those associated with other vesicomysid species of this study (Table 3). In contrast, *A. southwardae* dominated where the sulfide peak was the deepest, from 14 cm depth in the Worm Hole pockmark

(Pastor et al., Submitted), to 17 cm depth at site B in the Lobe area (Table 3, Figure 7). To obtain sulfides for its symbionts, *A. southwardae* may need to dig deeper within the sediments, temporarily separating the clam from the oxygenated surface (oxygen penetration is limited to the first cm at the most). We hypothesized that its high oxygen affinity gives *A. southwardae* an advantage over *C. regab*, which, without hemoglobin, dominates at all other sites of the Lobe area (A, C and F) where the sulfide levels were more similar to that of the sediment-water interface. In addition, the very long shell length of *A. southwardae* and its elongated shell shape, clearly appear to be an adaptive advantage to burrow more easily and deeper (Figures 7, 8). The same hypothesis was proposed to explain the relative distribution of *L. chuni* and *C. regab* in the Regab pockmark, with the former with high oxygen affinity and long siphons, being assumed to be favored at low flux areas in the pockmark, where sulfides are produced slightly deeper than in the higher flux areas (Decker et al., 2014; Krylova and Cosel, 2011) (Figures 7, 8).

#### **The paradox of the success of *C. regab* with no hemoglobin**

Although *C. regab* does not possess hemoglobin, it dominated the hemoglobin-containing species *A. southwardae* in three Lobe sites except site B (Table 3), and *L. chuni* in the Regab pockmark (Decker et al., 2012). Despite the lack of hemoglobin for oxygen transport and storage, *C. regab* can settle in cold seeps and the reduced sediments of the Gulf of Guinea, where it is the only species and has densities as high as 1400 ind.m<sup>-2</sup> in the Lobe area, and from 500 to 1000 ind.m<sup>-2</sup> in the Regab pockmark (Decker et al., 2012a). This species was associated with the highest methane fluxes in the Lobe area (Table 3) as well as in the Regab pockmark (Decker et al., 2012a; Khripounoff et al., 2015), and seemed associated with sulfide-rich sediments closer to the surface than the hemoglobin species (*A. southwardae* and *L. chuni*) occurring in the same areas (Decker et al., 2014; Pop Ristova et al., 2012) (Figure 8). This species may be able to bury into the sediment using its foot containing myoglobin (Decker et al., 2012), but *C. regab* shells generally appear high above the surface, where the siphons can reach the oxygen in the surrounding seawater. This behavior may partially result in

an over-estimation of its dominance, making it easier to see and count *C. regab*, than other buried vesicomysid species, such as *L. chuni*, which often barely shows its siphons at the surface, or *A. southwardae* in the Lobe area. The fact that hemoglobin-species generally remain more buried may contribute to the underestimation of their abundance at these sites. Moreover, the vascularized foot of *C. regab* also allows lateral movements and help withstand highly dynamic environment with transient fluxes at the Regab pockmark (Marcon et al., 2014) and high sedimentation rates at Lobe C (Rabouille et al., in press this volume).

However, *C. regab* is a very successful species and enjoy high reproductive success. During the evolution of the vesicomysid species, *C. regab* appears to have lost the ability to synthesize hemoglobin through a loss of function or the implementation of another strategy (i.e. a temporary anaerobic metabolism?). Furthermore, hemoglobin synthesis may have a metabolic cost, and *C. regab* may benefit from this economy to invest in higher reproduction or growth rates (Guillon et al., subm). Moreover, other biological traits may contribute similarly, such as more efficient symbiont strains enabling a faster growth in *C. regab* compared to *L. chuni* (Decker et al. in prep).

In conclusion, in addition to depth segregation factors which likely influence the vesicomysid clam distribution in the Gulf of Guinea, *C. regab* without hemoglobin appears as to be the dominant clam species when high methane fluxes provide high sulfide levels close to the sediment surface. This species is dominant at the most active part of the Regab pockmark, and in the terminal lobe area of the Congo deep-sea fan currently receiving the high organic matter inputs. However, hemoglobin with high oxygen affinity is likely to be advantageous for other vesicomysid species to cope with low oxygen levels either in the bottom layers, such as in bathyal cold seeps of the Gabon margin, or in the upper sediment layers when clams need to burrow to obtain sulfides located at around 15 cm below the sediment-water interface, as in low methane flux areas, or older turbidite depositional areas (Figure 8).

## Acknowledgments

We are indebted to the people who provided us with the vesicomysid samples: first, the Chief Scientists: Dr. Karine Olu of the WACS cruise (2011) and Dr. Christophe Rabouille (2012) of the CONGOLOBE cruise, and also to the pilots of the ROVs, VICTOR 6000. We wish to thank all the crew members of the two cruises. We also thank Olivier Mouchel, Perrine Cruaud and other IFREMER technicians for their help on-board for sampling and dissection, and Sylvie Gros for the drawing. We are grateful to Dr. Elena Krylova for help with species identification. The English was professionally edited by Carolyn Engel-Gautier. This work is a part of the Congolobe ANR Project n° 11 BS56 030).

## References

- Amano, K., Kiel, S., 2007. Fossil Vesicomysid Bivalves from the North Pacific Region. *The Veliger* 49, 270-293.
- Aminot, A., K erouel, R., 2004. Hydrologie des  cosyst mes marins. Param tres et analyses. , Ifremer ed. Ifremer, p. 336p.
- Arp, A.J., Childress, J.J., Fisher, C.R., 1984. Metabolic and blood gas transport characteristics of the hydrothermal vent bivalve *Calymene magnifica*. *Physiological Zoology* 57, 648-662.
- Audzijonyte, A., Krylova, E.M., Sahling, H., Vrijenhoek, R.C., 2012. Molecular taxonomy reveals broad trans-oceanic distributions and high species diversity of deep-sea clams (Bivalvia: Vesicomysidae: Pliocardiinae) in chemosynthetic environments. *Systematics and Biodiversity* 10, 403-415.
- Barry, J.P., Kochevar, R.E., Baxter, C.H., 1997. The influence of pore-water chemistry and physiology in the distribution of vesicomysid clams at cold seeps in Monterey Bay : implications for patterns of chemosynthetic community organization. *Limnology and Oceanography* 42, 318-328.
- Cambon-Bonavita, M.A., Nadalig, T., Roussel, E., Delage, E., Duperron, S., Caprais, J.C., Boetius, A., Sibuet, M., 2009. Diversity and distribution of methane-oxidizing microbial communities associated with different faunal assemblages in a giant pockmark of the Gabon continental margin. *Deep Sea Research Part II: Topical Studies in Oceanography* 56, 2248-2258.
- Caprais, J.C., Lanteri, N., Crassous, P., No l, P., Bignon, L., Rousseaux, P., Pignet, P., Khripounoff, A., 2010. A new CALMAR benthic chamber operating by submersible: First application in the cold-seep environment of Napoli mud volcano (Mediterranean Sea). *Limnology and Oceanography* 8, 304-312.
- Carney, S.L., Flores, J.F., Orobona, K.M., Butterfield, D.A., Fisher, C.R., Schaeffer, S.W., 2007. Environmental differences in hemoglobin gene expression in the hydrothermal vent tubeworm, *Ridgeia piscesae*. *Comparative Biochemistry and Physiology Part B: Biochemistry and Molecular Biology* 146, 326-337.
- Carritt, D.E., Carpenter, J.H., 1966. Comparison and evaluation of currently employed modifications of the Winkler method for determining dissolved oxygen in sea water: A NASCO report. . *J. Mar. Res.* 24, 286-318.

- Cary, S., Giovannoni, S., 1993. Transovarial Inheritance of Endosymbiotic Bacteria in Clams Inhabiting Deep-Sea Hydrothermal Vents and Cold Seeps. *Proceedings of the National Academy of Sciences of the United States of America* 90, 5695 - 5699.
- Cavanaugh, C.M., 1983. Symbiotic chemoautotrophic bacteria in marine invertebrates from sulphide-rich habitats. *Nature* 302, 58-61.
- Childress, J.J., Fisher, C.R., Favuzzi, J.A., Sanders, N.K., 1991. Sulfide and carbon dioxide uptake by the hydrothermal vent clam, *Calyptogena magnifica* and its chemoautotrophic symbionts. *Physiological Zoology* 64, 1444-1470.
- Cline, J.D., 1969. Spectrophotometric determinations of hydrogen sulfide in natural waters. *Limnology and Oceanography* 14, 454-458.
- Cosel, R.v., Olu, K., 2009. Large Vesicomysidae (Mollusca: Bivalvia) from cold seeps in the Gulf of Guinea off the coasts of Gabon, Congo and northern Angola. *Deep Sea Research II* 56, 2350-2379.
- Cruaud, P., Vigneron, A., Pignet, P., Caprais, J.-C., Lesongeur, F., Toffin, L., Godfroy, A., Cambon-Bonavita, M.-A., 2015. Microbial communities associated with benthic faunal assemblages at cold seep sediments of the Sonora Margin, Guaymas Basin. *Frontiers in Marine Science* 2.
- Dando, P.R., Southward, A.J., Southward, E.C., Terwilliger, N.B., Terwilliger, R.C., 1985. Sulphur-oxidising bacteria and haemoglobin in gills of the bivalve mollusc *Myrtea spinifera*. *Marine Ecology Progress Series* 23, 85-98.
- Decker, C., Caprais, J.C., Khrpounoff, A., Olu, K., 2012a. First respiration estimates of cold-seep vesicomysid bivalves from *in situ* total oxygen uptake measurements. *Comptes rendus biologies* 335, 261-270.
- Decker, C., Olu, K., 2012. Habitat heterogeneity influences cold-seep macrofaunal communities within and among seeps along the Norwegian margin. Part2: Contribution of chemosynthesis to nutritional patterns. *Marine Ecology* 33, 231-245.
- Decker, C., Olu, K., Arnaud-Haond, S., Duperron, S., 2013. Physical Proximity May Promote Lateral Acquisition of Bacterial Symbionts in Vesicomysid Clams. *PLoS ONE* 8, e64830.
- Decker, C., Olu, K., Cunha, R.L., Arnaud-Haond, S., 2012b. Phylogeny and diversification patterns among Vesicomysid bivalves. *PLoS ONE* 7, 1-8.
- Decker, C., Zorn, N., Potier, N., Leize-Wagner, E., Lallier, F.H., Olu, K., Andersen, A.C., 2014. Globin's Structure and Function in Vesicomysid Bivalves from the Gulf of Guinea Cold Seeps as an Adaptation to Life in Reduced Sediments. *Physiological and Biochemical Zoology: Ecological and Evolutionary Approaches* 87, 855-869.
- Duperron, S., Rodrigues, C.F., Leger, N., Szafranski, K., Decker, C., Olu, K., Gaudron, S.M., 2012. Diversity of symbioses between chemosynthetic bacteria and metazoans at the Guinness cold seep site (Gulf of Guinea, West Africa). *MicrobiologyOpen* 1, 467-480.
- Elvert, M., Hopmans, E.C., Treude, T., Boetius, A., Suess, E., 2005. Spatial variations of methanotrophic consortia at cold methane seeps: implications from a high-resolution molecular and isotopic approach. *Geobiology* 3, 195-209.
- Endow, K., Ohta, S., 1990. Occurrence of bacteria in the primary oocytes of vesicomysid clam *Calyptogena soyoeae*. *Marine Ecology Progress Series* 64, 309-311.
- Fiala-Médioni, A., Le Pennec, M., 1987. Trophic structural adaptation in relation to the bacterial association of bivalve molluscs from hydrothermal vents and subduction zones. *Symbiosis* 4, 63-74.
- Fonselius, S.H., 1983. Spectrophotometric determinations of hydrogen sulfide in natural waters., in: K., G. (Ed.), *Methods of Sea-Water Analysis*. Verlag Chemie, Kiel, pp. 73-84.
- Goffredi, S.K., Barry, J.P., 2002. Species-specific variation in sulfide physiology between closely related Vesicomysid clams. *Marine Ecology Progress Series* 225, 227-238.

- Goffredi, S.K., Hurtado, L.A., Hallam, S., Vrijenhoek, R.C., 2003. Evolutionary relationships of deep-sea vent and cold seep clams (Mollusca: Vesicomysidae) of the "*pacifica/lepta*" species complex. *Marine Biology* 142, 311-320.
- Guillon, E., Menot, L., Decker, C., Krylova, E.M., Olu, K., *subm.* The vesicomysid bivalve habitat at cold-seeps supports heterogeneous, and dynamic macrofaunal assemblages. *Deep Sea Research*.
- Helms, J., Munzel, U., 2008. Nonparametric Multiple Comparisons, version 1.0-7 ed. CRAN.
- Kawano, K., Iwasaki, N., Suzuki, T., 2003. Notable diversity in hemoglobin expression patterns among species of the deep-sea clam, *Calyptogena*. *Cellular and Molecular Life Sciences (CMLS)* 60, 1952-1956.
- Khripounoff, A., Caprais, J.C., Decker, C., Essirard, M., Le Bruchec, J., Noel, P., Olu, K., 2015. Variability in gas and solute fluxes through deep-sea chemosynthetic ecosystems inhabited by vesicomysid bivalves in the Gulf of Guinea. *Deep Sea Research Part I: Oceanographic Research Papers* 95, 122-130.
- Khripounoff, A., Caprais, J.C., Decker, C., Le Bruchec, J., Noël, P., Husson, B., *in press* this volume. Respiration of bivalves from three different deep-sea areas: cold seeps, hydrothermal vents, and organic carbon-rich sediments. *Deep-Sea Research Part II*.
- Kojima, S., Fujikura, K., Okutani, T., 2004. Multiple trans-Pacific migrations of deep-sea vent:seep-endemic bivalves in the family Vesicomysidae. *Molecular Phylogenetics and Evolution* 32, 396-406.
- Kojima, S., Ohta, S., 1997. Bathymetrical distribution of the species of the genus *Calyptogena* in the Nankai Trough, Japan. *Venus: Japanese Journal of Malacology* 56, 293-297.
- Kraus, D., Doeller, J., Powell, C., 1996. Sulfide may directly modify cytoplasmic hemoglobin deoxygenation in *Solemya reidi* gills. *Journal of Experimental Biology* 199, 1343-1352.
- Kraus, D.W., Wittenberg, J.B., 1990. Hemoglobins of the *Lucina pectinata*/bacteria symbiosis. I. Molecular properties, kinetics and equilibria of reactions with ligands. *Journal of Biological Chemistry* 265, 16043-16053.
- Krylova, E.M., Cosel, R.v., 2011. A new genus of large Vesicomysidae (Mollusca, Bivalvia, Vesicomysidae, Pliocardiinae) from the Congo margin, with the first record of the subfamily Pliocardiinae in the Bay of Biscay (northeastern Atlantic). *Zoosystema* 33, 83-99.
- Krylova, E.M., Sahling, H., 2010. Vesicomysidae (Bivalvia): current taxonomy and distribution. *PLoS ONE* 5, 1-9.
- Lisin, S., Barry, J.P., Harrold, C., 1997. Reproductive biology of Vesicomysid clams from cold seeps in Monterey Bay, California. *American Society of Zoologists*, 50.
- Luther, G.W., Gartman, A., Yücel, M., Madison, A.S., Moore, T.S., Nees, H.A., Nuzzio, D.B., Sen, A., Lutz, R.A., Shank, T.M., Fisher, C.R., 2012. Chemistry, temperature, and faunal distributions at diffuse-flow hydrothermal vents: Comparison of two geologically distinct ridge systems. *Oceanography* 25, 234-245.
- Marcon, Y., Sahling, H., Allais, A.G., Bohrmann, G., Olu, K., 2014. Distribution and temporal variation of mega-fauna at the Regab pockmark (Northern Congo Fan), based on a comparison of videomosaics and GIS analyses. *Marine Ecology* 35, 77-95.
- Menot, L., Galéron, J., Olu, K., Caprais, J.C., Crassous, P., Khripounoff, A., Sibuet, M., 2010. Spatial heterogeneity of macro-infaunal communities in and near a giant pockmark area in the deep Gulf of Guinea. *Marine Ecology* 31, 78-93.
- Nagel, R.L., 1985. Molluscan hemoglobins, in: Cohen, W.D. (Ed.), *Blod Cells of Marine Invertebrates: Experimental Systems in Cell Biology and Comparative Physiology*. Alain R. Liss, New York, pp. 227-247.
- Olu-Le Roy, K., Caprais, J.C., Fifiş, A., Fabri, M.C., Galéron, J., Budzinski, H., Le Ménach, K., Khripounoff, A., Ondréas, H., Sibuet, M., 2007. Cold seep assemblages on a giant

- pockmark off West Africa: spatial patterns and environmental control. *Marine Ecology* 28, 115–130.
- Olu, K., Duperret, A., Sibuet, M., Foucher, J.P., Fiala-Médioni, A., 1996. Structure and distribution of cold seep communities along the Peruvian active margin: relationship to geological and fluid patterns. *Marine Ecology Progress Series* 132, 109-125.
- Ondréas, H., Olu, K., Fouquet, Y., Charlou, J., Gay, A., Dennielou, B., Donval, J., Fifis, A., Nadalig, T., Cochonot, P., Cauquil, E., Bourillet, J., Moigne, M., Sibuet, M., 2005. ROV study of a giant pockmark on the Gabon continental margin. *Geo-Marine Letters* 25, 281.
- Pastor, L., Toffin, L., Decker, C., Olu, K., Cathalot, C., Lesongeur, F., Caprais, J.C., Bessette, S., Brandily, C., Taillefert, M., Rabouille, C., Submitted. Early diagenesis in the sediments of the Congo deep-sea fan dominated by massive terrigenous deposits: Part III - Sulfate- and methane- based microbial processes.
- Peek, A.S., Gustafson, R.G., 1997. Evolutionary relationships of deep-sea hydrothermal vent and cold-water seep clams (*Bivalvia*: *Vesicomyidae*): results from the mitochondrial cytochrome oxidase subunit I. *Marine Biology* 130, 151-161.
- Pop Ristova, P., Wenzhöfer, F., Ramette, A., Zabel, M., Fischer, D., Kasten, S., Boetius, A., 2012. Bacterial diversity and biogeochemistry of different chemosynthetic habitats of the REGAB cold seep (West African margin, 3160 m water depth). *Biogeosciences Discuss.* 9, 8337-8385.
- R Development Core team, 2010. R: A language and environment for statistical computing. R Foundation for Statistical Computing, 2.12.0 ed, Vienna, Austria.
- Rabouille, C., Caprais, J.C., Lansard, B., Crassous, P., Dedieu, K., Reyss, J.L., Khripounoff, A., 2009. Organic matter budget in the Southeast Atlantic continental margin close to the Congo Canyon: In situ measurements of sediment oxygen consumption. *Deep Sea Research Part II: Topical Studies in Oceanography* 56, 2223-2238.
- Rabouille, C., Olu, K., Baudin, F., Khripounoff, A., Dennielou, B., Arnaud-Haond, S., Babonneau, N., Bayle, C., Beckler, J., Bessette, S., Bombléd, B., Brandily, C., Caprais, J.C., Cathalot, C., Corvaisier, R., Croguennec, C., Cruaud, P., Decker, C., Droz, L., Gayet, N., Godfroy, A., Hourdez, S., Le Bruchec, J., Le Saout, J., Lesaout, M., Lesongeur, F., Martinez, P., Mejanelle, L., Michalopoulos, P., Mouchel, O., Noel, P., Pastor, L., Picot, M., Pignet, P., Pozzato, L., Prusky, A.M., Rabiller, M., Raimonet, M., Ragueneau, O., Reys, J.L., Rodier, P., Ruesch, B., Ruffine, L., F., S., Senyarich, C., Schnyder, J., Sen, A., Stetten, E., Yi Sun, M., Taillefert, M., Teixeira, S., Tisnerat-Laborde, N., Toffin, L., Toussaint, F., Vétion, G., Jouanneau, J.M., Bez, M., in press this volume. The Congolobe project: a multidisciplinary study of the lobe complex in the Congo deep-sea fan. *Deep Sea Research II*.
- Rodrigues, C., Cunha, M.R., Olu, K., Duperron, S., 2012. The smaller vesicomyid bivalves in the genus *Isorropodon* (*Bivalvia*, *Vesicomyidae*, *Pliocardiinae*) also harbour chemoautotrophic symbionts. *Symbiosis* 56, 129-137.
- Sahling, H., Bohrmann, G., Spiess, V., Bialas, J., Breitzke, M., Ivanov, M., Kasten, S., Krastel, S., Schneider, R., 2008. Pockmarks in the Northern Congo Fan area, SW Africa: Complex seafloor features shaped by fluid flow. *Marine Geology* 249, 206-225.
- Sahling, H., Rickert, D., Lee, R.W., Linke, P., Suess, E., 2002. Macrofaunal community structure and sulfide flux at gas hydrate deposits from the Cascadia convergent margin, NE Pacific. *Marine Ecology Progress Series* 231, 121-138.
- Sarradin, P.M., Caprais, J.C., 1996. Analysis of dissolved gases by headspace sampling, gas chromatography with columns and detectors commutation: Preliminary results. *Anal. Commun.* 33, 371-373.
- Savoye, B., Babonneau, N., Dennielou, B., Bez, M., 2009. Geological overview of the Angola-Congo margin, the Congo deep-sea fan and its submarine valleys. *Deep Sea Research Part II: Topical Studies in Oceanography* 56, 2169-2182.

- Seeberg-Elverfeldt, J., Schlüter, M., Feseker, T., Kölling, M., 2005. Rhizon sampling of porewaters near the sediment-water interface of aquatic systems. *Limnology and Oceanography: Methods* 3, 361-371.
- Sibuet, M., Olu, K., 1998. Biogeography, biodiversity and fluid dependence of deep-sea cold-seep communities at active and passive margins. *Deep-Sea Research II* 45, 517-567.
- Sibuet, M., Vangriesheim, A., 2009. Deep-sea environment and biodiversity of the West African Equatorial margin. *Deep Sea Research Part II: Topical Studies in Oceanography* 56, 2156-2168.
- Stetten, E., Baudin, F., Reyss, J.-L., Martinez, P., Charlier, K., Schnyder, J., Rabouille, C., Dennielou, B., Coston-Guarini, J., Pruski, A.M., 2015. Organic matter characterization and distribution in sediments of the terminal lobes of the Congo deep-sea fan: Evidence for the direct influence of the Congo River. *Marine Geology* 369, 182-195.
- Suzuki, T., Kawamichi, H., Ohtsuki, R., Iwai, M., Fujikura, K., 2000. Isolation and cDNA-derived amino acid sequences of hemoglobin and myoglobin from the deep-sea clam *Calymptogena kaikoi*. *Biochimica et Biophysica Acta (BBA) - Protein Structure and Molecular Enzymology* 1478, 152-158.
- Suzuki, T., Ohta, S., 2000. The hemoglobin gene of the deep-sea clam *Calymptogena soyoae* has a novel intron in A-helix. *The International Journal of Biochemistry and Cell Biology* 32, 1205-1211.
- Suzuki, T., Takagi, T., Ohta, S., 1989a. Primary structure of a dimeric haemoglobin from the deep-sea cold-seep clam *Calymptogena soyoae*. *Biochemical Journal* 260, 177-182.
- Suzuki, T., Takagi, T., Ohta, S., 1989b. Amino acid sequence of the dimeric hemoglobin (Hb I) from the deep-sea cold-seep clam *Calymptogena soyoae* and the phylogenetic relationship with other molluscan globins. *Biochim. Biophys Acta* 999, 254-259.
- Szafrański, K.M., Gaudron, S.M., Duperron, S., 2014. Direct evidence for maternal inheritance of bacterial symbionts in small deep-sea clams (*Bivalvia*: *Vesicomysidae*). *Naturwissenschaften* 101, 373-383.
- Teixeira, S., Olu, K., Decker, C., Cunha, R.L., Fuchs, S., Hourdez, S., Serrao, E.A., Arnaud-Haond, S., 2013. High connectivity across the fragmented chemosynthetic ecosystems of the deep Atlantic Equatorial Belt: efficient dispersal mechanisms or questionable endemism? *Mol Ecol* 22, 4663-4680.
- Terwilliger, R.C., Terwilliger, N.B., Arp, A., 1983. Termal vent clam (*Calymptogena magnifica*) hemoglobin. *Science* 219, 981-983.
- Thiele, J., Jaeckel, S., 1931. Muschelnder Deutschen Tiefsee-Expedition. *Wissenschaftliche Ergebnisseder DeutschenTiefsee- Expeditionaufdem Dampfer "Valdivia"* 21, 159-268.
- van der Heijden, K., Petersen, J.M., Dubilier, N., Borowski, C., 2012. Genetic Connectivity between North and South Mid-Atlantic Ridge Chemosynthetic Bivalves and Their Symbionts. *PLoS ONE* 7, e39994.
- von Cosel, R., Olu, K., 2009. Large Vesicomysidae (Mollusca: Bivalvia) from cold seeps in the Gulf of Guinea off the coasts of Gabon, Congo and northern Angola. *Deep Sea Research Part II: Topical Studies in Oceanography* 56, 2350-2379.
- Weber, R.E., Vinogradov, S.N., 2001. Nonvertebrate hemoglobins: functions and molecular adaptations. *Physiology reviews* 81, 569-628.
- Zal, F., Leize, E., Oros, D.R., Hourdez, S., Dorsselaer, A.V., Childree, J.J., 2000. Haemoglobin structure and biochemical characteristics of the sulphide-binding component from the deep-sea clam *Calymptogena magnifica*. *Cah. Biol. Mar.* 41, 413-423.



**Figure 1:** Location of the study sites and the sampled vesicomyid species. Scale bar, 1 cm.

**Figure 2:** Views showing the three vesicomyid species in their habitats along the Congo-Angola margin. Guinness area: Harp pockmark colonized by *Calyptogena valdiviae* (A); Kilkenny pockmark with *Elenaconcha guiness* and *C. valdiviae* (B); Worm Hole pockmark with a few *Abyssogena southwardae* specimens (C); Lobes of the Congo deep-sea fan: a clam bed at site B dominated by *A. southwardae* (D); a dense vesicomyid bed at site A, dominated by *Christineconcha regab* (E); some *C. regab* and *A. southwardae* around microbial mats at site F (F); a heart-shaped patch of vesicomyid clams at site C dominated by *C. regab* (G).

**Figure 3:** Size-exclusion chromatography of hemoglobins on a Superose 12 column: *C. valdiviae* hemoglobin (A); *E. guiness* hemoglobin (B); *A. southwardae* from Worm Hole pockmark hemoglobin (C); *A. southwardae* from the Lobes site B (D). The column was equilibrated with vesicomyid buffer (pH 6.2) described in Childress et al. (1991).

**Figure 4:** Electrospray ionization-mass spectrometry (ESI-MS) spectra of *Calyptogena valdiviae* hemoglobin (A): Comparison of native conditions (i) with denaturant conditions (ii) (MaxEnt deconvolution spectra). Masses calculated from multiply charged spectra were: G1 :  $15774 \pm 1$  Da; G2 :  $16023 \pm 1$  Da; G3 :  $16080 \pm 1$  Da; G4 :  $16541 \pm 1$  Da (i); G1 :  $15158 \pm 1$  Da; G2 :  $15407 \pm 1$  Da; G3 :  $15464 \pm 1$  Da; G4 :  $15925 \pm 1$  Da (ii). ESI-MS spectra of *Elenaconcha guiness* hemoglobin (B): native conditions at cone voltage of 130 V (i) native conditions at cone voltage of 210 V (heme dissociation) (ii) and denaturant conditions (iii) (all MaxEnt deconvolution spectra). Masses calculated from multiply charged spectra were: G'1 :  $15768 \pm 1$  Da; G'2 :  $16016 \pm 1$  Da; G'3 :  $16074 \pm 1$  Da; G'4 :  $16537 \pm 1$  Da (i); G'1 :  $15152 \pm 1$  Da; G'2 :  $15400 \pm 1$  Da; G'3 :  $15458 \pm 1$  Da; G'4 :  $15921 \pm 1$  Da (ii and iii). Native ESI-MS spectra of *Abyssogena southwardae* hemoglobin (Worm Hole) (C): cone voltage set

to 150 V (i); cone voltage set to 220 V: dissociation of the heme complex (ii), mass range from 15900-16800 Da; range from 15000-15900 Da (MaxEnt deconvolution spectra). Masses calculated from multiply charged spectra were: G''1a :  $15169 \pm 1$  Da; G''2a :  $15183 \pm 1$  Da; G''3 :  $16004 \pm 1$  Da; G''4 :  $16020 \pm 1$  Da (i and ii?).

**Figure 5:** Oxygen affinity of the hemoglobin of vesicomysid bivalves from the Gulf of Guinea measured at 5°C and at pH 6.5. WH: Individuals from the Worm Hole pockmark; L: Individuals from the Lobe site B.

**Figure 6:** Oxygen affinity of the hemoglobin of vesicomysid bivalves expressed as  $P_{50}$ , i.e. the partial pressure of oxygen necessary to saturate the hemoglobin at 50% of its capacity. The symbiotic species in the boxed area all have  $P_{50}$  values in the range of 0.1-1 Torr (mm Hg), indicating very high affinity.

**Figure 7:** Correlation between mean individual shell length of the dominant species and the maximum sulfide concentration depth at each sampled site. See Table 3 for data. Blue: *C. regab*, Green: *E. guiness*, Purple: *A. southwardae*. Circle represents *C. regab* from the Regab pockmark (Marker W03, unpublished data).

**Figure 8:** Diagram illustrating the vertical distribution of the vesicomysid species in their habitats. Dominant species are represented in dark brown.

**Table 1: Worldwide distribution of the species observed in the Gulf of Guinea, with depths and type of habitat. CS: cold-seeps; RS: reduced sediment; HV: hydrothermal vents.**

| Species                        | Locations                     | Sites                                     | Ecosyst<br>em | Depth<br>(m) | Tot<br>al<br>dep<br>th<br>ran<br>ge | References                                 |
|--------------------------------|-------------------------------|---|---------------|--------------|-------------------------------------|--|
| <i>Abyssogena southwardae</i>  | East Atlantic– Gulf of Guinea | Worm Hole pockmark                        | CS            | 3090         |                                     | Teixeira et al. 2013                       |
|                                |                               | Lobes of the Congo deep-sea fan           | RS            | 5000         |                                     |  |
|                                | Atlantic - MAR                | Logatchev 14°N                            | HV            | 2950-3050    | 2950-3050                           | Krylova et al. 2010                        |
|                                | Atlantic - MAR                | Wideawake Field (5°S)                     | HV            | 2985         | 5100                                | Krylova et al. 2010                        |
|                                | West Atlantic                 | Florida                                   | CS            | 3313         |                                     | Krylova et al. 2010                        |
| <i>Calyptogena valdiviae</i>   | East Atlantic– Gulf of Guinea | Guinness pockmarks                        | CS            | 2985-5100    |                                     | Krylova et al. 2010                        |
|                                |                               | Gulf of Guinea (off Cameroon)             | CS            | 2492         | 500-                                | Cosel & Olu 2009<br>Krylova & Sahling 2006 |
|                                | East Atlantic                 | South African Republic (Off Knysna)       | CS            | 500          | 2500                                | Krylova & Sahling 2006                     |
|                                | East Atlantic                 | Rio de Oro (off Morocco)                  | CS            | 2480         |                                     | Krylova & Sahling 2006                     |
|                                | East Atlantic– Gulf of Guinea | Guinness pockmarks                        | CS            | 580-1200     | 580-1200                            | Cosel & Olu 2009                           |
| <i>Laubiericoncha chuni</i>    | East Atlantic– Gulf of Guinea | Astrid pockmark                           | CS            | 2820         | 2800-                               | Cosel & Olu 2009                           |
|                                |                               | Regab pockmark                            | CS            | 3170-3200    | 3200                                | Cosel & Olu 2009                           |
|                                |                               | Regab pockmark                            | CS            | 3170-3200    | 300                                 | Cosel & Olu 2009                           |
| <i>Christineconcha regab</i>   | East Atlantic– Gulf of Guinea | Baboon - Kouilou pockmark                 | CS            | 3000         | 0-500                               | This study                                 |
|                                |                               | Lobes of the Congo deep-sea fan           | RS            | 5000         | 0                                   | This study                                 |
|                                |                               | Bay of Biscay                             | ?             | 4125         |                                     | Krylova & Cosel 2011                       |
| <i>Wareniconcha guineensis</i> | East Atlantic– Gulf of Guinea | ZC  | RS            | 3960         | 400                                 | Cosel & Olu 2009                           |
|                                |                               | ZD  | RS            | 4020         | 0                                   | Cosel & Olu 2009                           |
|                                | East Atlantic– Gulf of Guinea | BSR                                       | RS            | 500-800      | 150                                 | Cosel & Olu 2009                           |
| <i>Isorropodon bigoti</i>      | East Atlantic                 | Guinness pockmarks                        | CS            | 580-670      | 150-                                | Rodriguez et al. 2012                      |
|                                |                               | off the Congo Republic and off Mauritania | RS            | 150-1200     | 1200                                | Cosel & Salas 2001                         |

|                             |                               |                |    |           |          |                  |
|-----------------------------|-------------------------------|----------------|----|-----------|----------|------------------|
| <i>Isorropodon striatum</i> | East Atlantic– Gulf of Guinea | ZC             | RS | 3960      | 400      | Cosel & Olu 2009 |
|                             |                               | ZD             | RS | 4020      | 0        | Cosel & Olu 2009 |
| <i>Pliocardia atalantae</i> | East Atlantic                 | Regab pockmark | CS | 3170-3200 | 320<br>0 | Cosel & Olu 2009 |

MAR, Mid-Atlantic Ridge

**Table 2:** Location of study sites, cruises, dives and species sampled for this study. Cv: *Calyptogena valdiviae*, Eg: *Elenaconcha guiness*, Cr: *Christineconcha regab* and As: *Abyssogena southwardae*. Specimens studied for hemoglobin structure are shown in bold.

| Site (Marker)                    | Latitude     | Longitude    | Depth (m) | Cruise    | Dive Number | Species sampled for this study |
|----------------------------------|--------------|--------------|-----------|-----------|-------------|--------------------------------|
| Guinness area – Kilkeny pockmark | S 1° 34.592  | E 8° 32.910  | 581       | WACS      | 433         | Cv, <b>Eg</b>                  |
| Guinness area – Harp pockmark    | S 1° 34.6482 | E 8° 31.822  | 780       | WACS      | 433         | <b>Cv</b>                      |
| Worm Hole pockmark               | S 4° 45.5607 | E 9° 56.4811 | 3089      | WACS      | 431         | <b>As</b>                      |
| Lobe area – site B (CoL11)       | S 6° 25.395  | E 5° 49.816  | 4720      | CONGOLOBE | 492         | <b>As</b> , Cr                 |
| Lobe area – site A (CoL02)       | S 6° 28.275  | E 6° 02.145  | 4769      | CONGOLOBE | 484         | Cr, As                         |
| Lobe area – site C (CoL09)       | S 6° 42.084  | E 5° 29.288  | 4846      | CONGOLOBE | 491         | Cr, As                         |
| Lobe area – site F (CoL03)       | S 6° 35.431  | E 5° 41.411  | 4873      | CONGOLOBE | 486         | Cr, As                         |

**Table 3:** Chemical characterization of the biotopes in the studied vesicomid beds at each site ordered by increasing depth. Mean density of vesicomid bivalves in the beds; proportions of each species and mean shell length of the sampled specimens. N: number of samples, n: number of individuals, ND: no data. a: Khripounoff et al. 2015, b: Khripounoff et al. submitted, c: Decker et al. 2012, d: Pop Ristova et al. 2012, e: Caprais J.C. pers. comm.; \*Mean density in the bed was estimated from blade-core samples (Olu et al. this issue); \*\*Species proportions in samples were estimated from blade-core and net samples.

| Site in the Gulf of Guinea (Marker)        | Depth (m) | [O <sub>2</sub> ] in the water (~15 cm above vesicomid bed) (N) (μM) | O <sub>2</sub> penetration depth (cm) | [H <sub>2</sub> S] at 1 cm depth (mM) | Max [H <sub>2</sub> S] in the sediment (max) (mM) | Depth of max [H <sub>2</sub> S] (cm) | H <sub>2</sub> S flux (mmol .m <sup>-2</sup> .d <sup>-1</sup> ) | CH <sub>4</sub> flux (mmol .m <sup>-2</sup> .d <sup>-1</sup> ) | Vesicomid species                         | Mean density in bed (N)* | Species proportion in samples (%)** | Mean individual shell length (cm) (n) |
|--|-----------|--|---------------------------------------|---------------------------------------|---|--------------------------------------|---|--|---|--------------------------|-------------------------------------|---------------------------------------|
| Guinness-Kilkenny pockmark                 | 580       | 144.8 ± 7.2 (3) <sup>a</sup>   | 0.65                                  | 1.95                                  | 24.86   | 13                                   | 158   | ND   | <i>E. guinness</i><br><i>C. valdiviae</i> | 165 (1)                  | 80                                  | 6.5 ± 2.0 (11)                        |
| Guinness-Harp pockmark                     | 680       | 136.9 <sup>a</sup>   | ND                                    | ND                                    | ND  | ND                                   | 0   | ND   | <i>C. valdiviae</i>                       | 561 (1)                  | 100                                 | 5.4 ± 1.3 (5)                         |
| Worm Hole pockmark (W11)                   | 3089      | ND   | ND                                    | 0.048                                 | 11.44   | 14                                   | ND  | ND   | <i>A. southwardae</i>                     | 3 (1)                    | 100                                 | 4.8 ± 0.4 (17)                        |
| Lobe area - Site B (CoL11)                 | 4720      | 226.3 ± 6.3 (3) <sup>b</sup>   | 0.74                                  | 0                                     | 2.65  | 17                                   | 0   | 8.4 <sup>b</sup>   | <i>A. southwardae</i><br><i>C. regab</i>  | 132 (1)                  | 67                                  | 10.6 ± 0.3 (2)                        |
| Lobe area - Site A (CoL02)                 | 4769      | 214.8 ± 3.3 (3) <sup>b</sup>   | 0.08                                  | 0.08                                  | 8.17  | 10                                   | 0   | 108.5 <sup>b</sup>   | <i>C. regab</i><br><i>A. southwardae</i>  | 751 ± 355 (4)            | 93                                  | 12.1 ± 1.5 (28)                       |
| Lobe area - Site F (CoL03)                 | 4785      | 239.0 ± 5.0 (2) <sup>b</sup>   | 0.36                                  | 0.14                                  | 1.42  | 2.5                                  | 0   | 208.9 <sup>b</sup>   | <i>C. regab</i><br><i>A. southwardae</i>  | 126 ± 132 (2)            | 61                                  | 7.1 ± 0.5 (140)                       |
| Lobe area - Site C (CoL09)                 | 4946      | 236.5 ± 3.7 (3) <sup>b</sup>   | 0.1                                   | 0.01                                  | 2.24  | 7                                    | 0   | 139 <sup>b</sup>   | <i>C. regab</i><br><i>A. southwardae</i>  | 1386 ± 429 (3)           | 98                                  | 7.3 ± 0.9 (140)                       |
| Regab pockmark - Site South-West (W03/M10) | 3154      | 242.5 ± 10.7 (3) <sup>a</sup>  | no data                               | 0 <sup>d</sup>                        | 3 <sup>d</sup>                                    | 8 <sup>d</sup>                       | 0 <sup>a</sup>  | 0.3 <sup>c</sup><br>-<br>12.3 <sup>a</sup>                     | <i>C. regab</i><br><i>L. chuni</i>        | 1056 ± 218 (3)           | 91                                  | 12.2 ± 1.9 (11)                       |

*Globins in Vesicomys Bivalves*

|  |          |                                     |                   |                |                    |                |                |   |  |                        |                 |  |
|--|----------|-------------------------------------|-------------------|----------------|--------------------|----------------|----------------|---|--|------------------------|-----------------|--|
| Regab<br>pockma<br>rk – Site<br>Centre<br>(W05/M<br>7) | 317<br>1 | 221.3 ±<br>17.9<br>(3) <sup>a</sup> | 0.09 <sup>e</sup> | 0 <sup>e</sup> | 13.22 <sup>e</sup> | 6 <sup>e</sup> | 0 <sup>e</sup> | 14.6 <sup>c</sup><br>-<br>45.8 <sup>a</sup> | <i>C. regab</i><br><br><i>L. chuni</i> | 681<br>±<br>297<br>(3) | 98.5<br><br>1.5 | 84.3 ± 10.2<br>(137)<br><br>95.2 ± 14.8<br>(2) |
|--|----------|-------------------------------------|-------------------|----------------|--------------------|----------------|----------------|---|--|------------------------|-----------------|--|

Accepted manuscript

**Table 4:** Comparison of the structure and masses of the hemoglobins (Hb) in the hemolymph of vesicomysid species known to date.

| Vesicomysid species   | Sites                       | Depth of sites (m) | Number of distinct monomers | Molecular state of each native Hb | Molecular mass of native Hb and of (monomer)   | Comments   | Author                           |
|-----------------------|-----------------------------|--------------------|-----------------------------|-----------------------------------|--|--|----------------------------------|
| <i>C. valdiviae</i>   | Guines s: Harp pockmark     | 580-680            | 4                           | Monomer                           | G1: 15 158 ± 1 Da<br>G2: 15 407 ± 1 Da<br>G3: 15 464 ± 1 Da<br>G4: 15 925 ± 1 Da<br>G'1: 15 152 ± 1 Da   | Mass spectrometry on native Hb   | This work                        |
| <i>E. guiness</i>     | Guines s: Kilkenny pockmark | 580                | 4                           | Monomer                           | G'2: 15 400 ± 1 Da<br>G'3: 15 458 ± 1 Da<br>G'4: 15 921 ± 1 Da<br>G''1a: 15 169 ± 1 Da                   | Mass spectrometry on native Hb   | This work                        |
| <i>A. southwardae</i> | Worm Hole pockmark          | 3089               | 4                           | Monomer                           | G''2a: 15 183 ± 1 Da<br><b>G''3: 16 004 ± 1 Da</b><br><b>G''4: 16 020 ± 1 Da</b>                         | Mass spectrometry on native Hb, <b>identical chains in both sites in bold</b>              | This work                        |
| <i>A. southwardae</i> | Lobes A, B, C, F            | 4946               | 4                           | Monomer                           | G''1b: 15 487 ± 1 Da<br>G''2b: 15 180 ± 1 Da<br><b>G''3: 16 004 ± 1 Da</b><br><b>G''4: 16 020 ± 1 Da</b> | Mass spectrometry on native hemoglobin, <b>identical chains between both sites in bold</b> | This work                        |
| <i>L. chuni</i>       | Regab                       | 3154               | 3                           | Monomer                           | G'''1: 15 361 ± 1 Da<br>G'''2: 15 668 ± 1 Da<br>G'''3: 15 682 ± 1 Da                                     | Mass spectrometry on native hemoglobin, Mb also present in foot.                           | Decker et al. 2014               |
| <i>C. regab</i>       | Regab, Lobes ABCF           | 3154<br>4946       | 0                           | –                                 | –  | No circulating Hb, Mb present in foot muscle   | Decker et al. 2014;<br>This work |

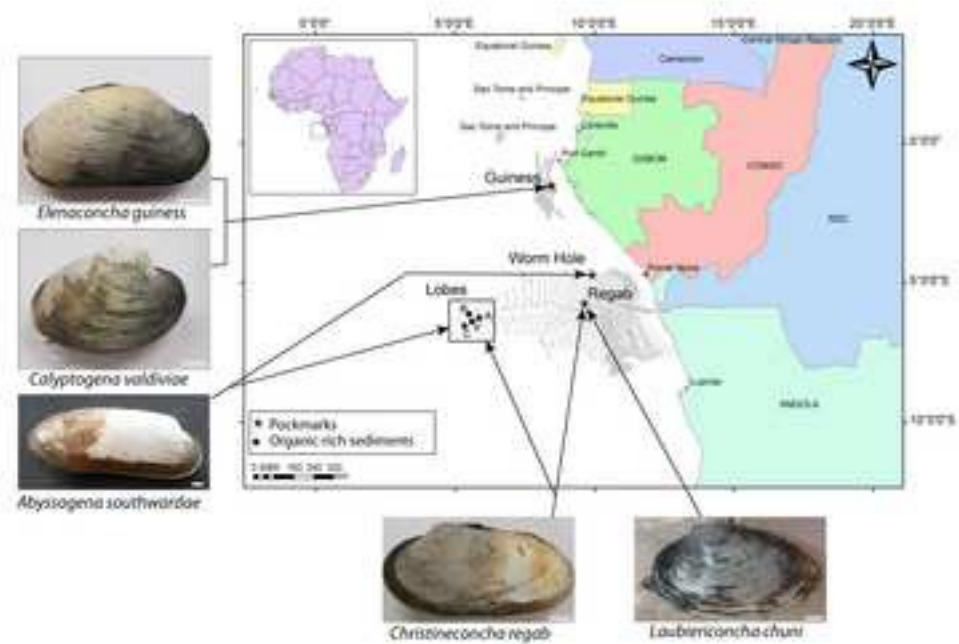
Table 4 (continued): Comparison of the structure and masses of the hemoglobins in the hemolymph of the vesicomysid species known to date.

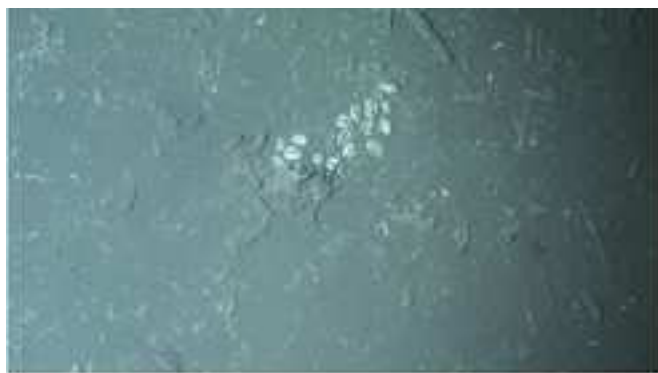
| Vesicomysid species | Sites                 | Depth of sites (m) | Number of distinct monomers | Molecular state of each native Hb                                | Molecular mass of native Hb and of (monomer)  | Comments   | Author             |
|---------------------|-----------------------|--------------------|-----------------------------|--|---|--|--------------------|
| <i>C. soyoae</i>    | Sagami Bay (Japan)    | 1160               | 2                           | Dimer: HbI and HbII  | 32 or 64; (16)  | SEC and sequencing<br><i>Tetramers when concentrated in the blood</i>  | Suzuki et al. 1989 |
| <i>C. tsubasa</i>   | Nankai Trough (Japan) | 3570               | 2                           | Dimer: HbI, HbII   | 30; (15)  | SEC and sequencing   | Kawano et al. 2003 |
| <i>C. nautilei</i>  | Nankai Trough (Japan) | 3570               | 2                           | Monomer: HbIII, HbIV   | (18)  | SEC and sequencing   | Kawano et al. 2003 |
| <i>C. kaikoi</i>    | Nankai Trough (Japan) | 3761               | 2                           | Dimers and tetramers   | 32 or 64; (16)  | SEC and sequencing;<br><i>Tetramers when concentrated in the blood</i> | Suzuki et al. 2000 |
| <i>C. magnifica</i> | EPR vents             | 2600               | 2                           | Monomer: $\alpha$ and dimer: $\beta\gamma$ combined as tetramers | 68 kDa<br>( $\alpha$ : 16 0134.3 $\pm$ 1.2 Da<br>$\beta\gamma$ : 32 513.1 $\pm$ 2.8 Da) | Mass spectrometry on native hemoglobin                                 | Zal et al. 2000    |

EPR: East Pacific Rise



Figure1





a



b



c



d



e

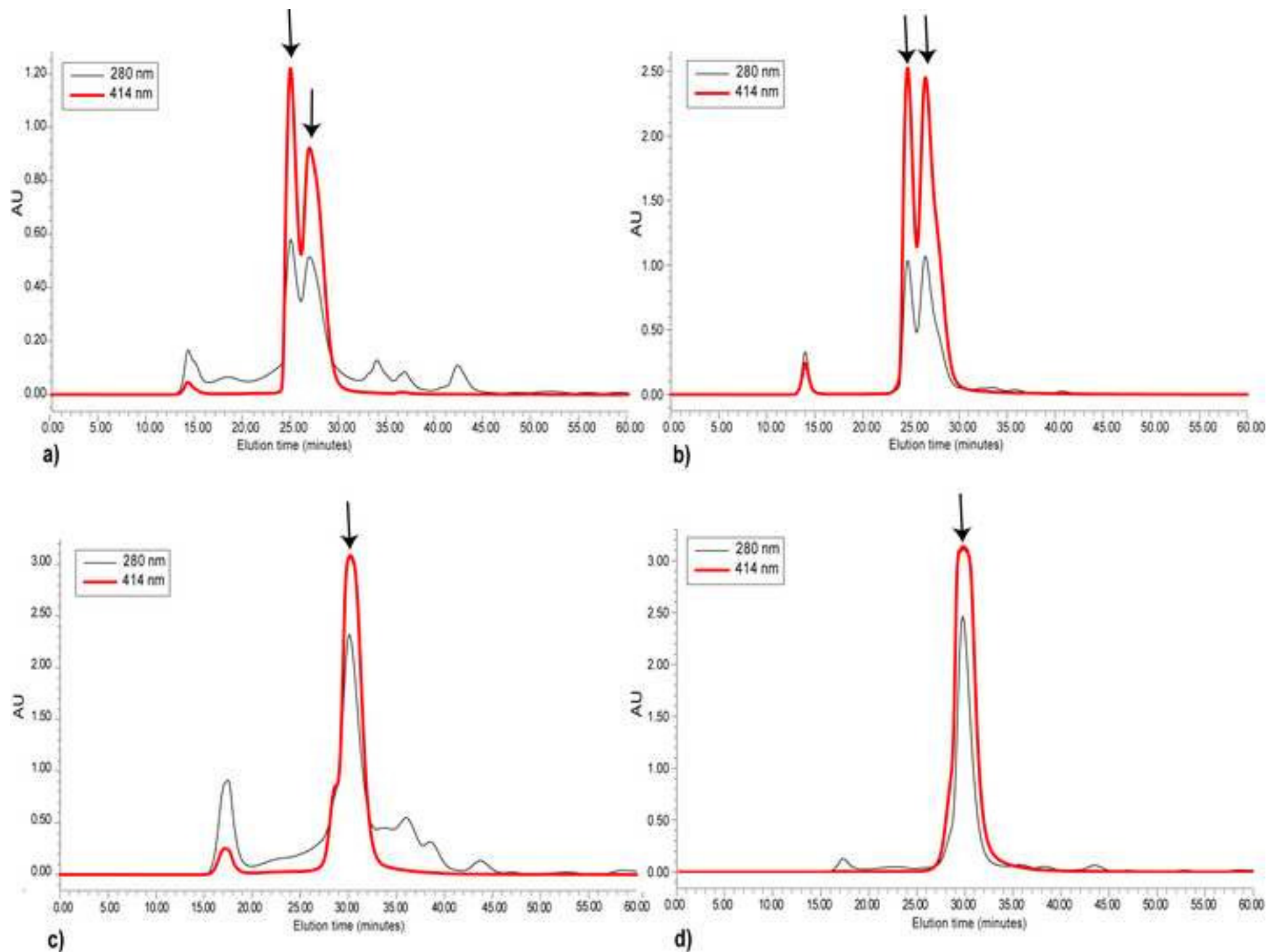


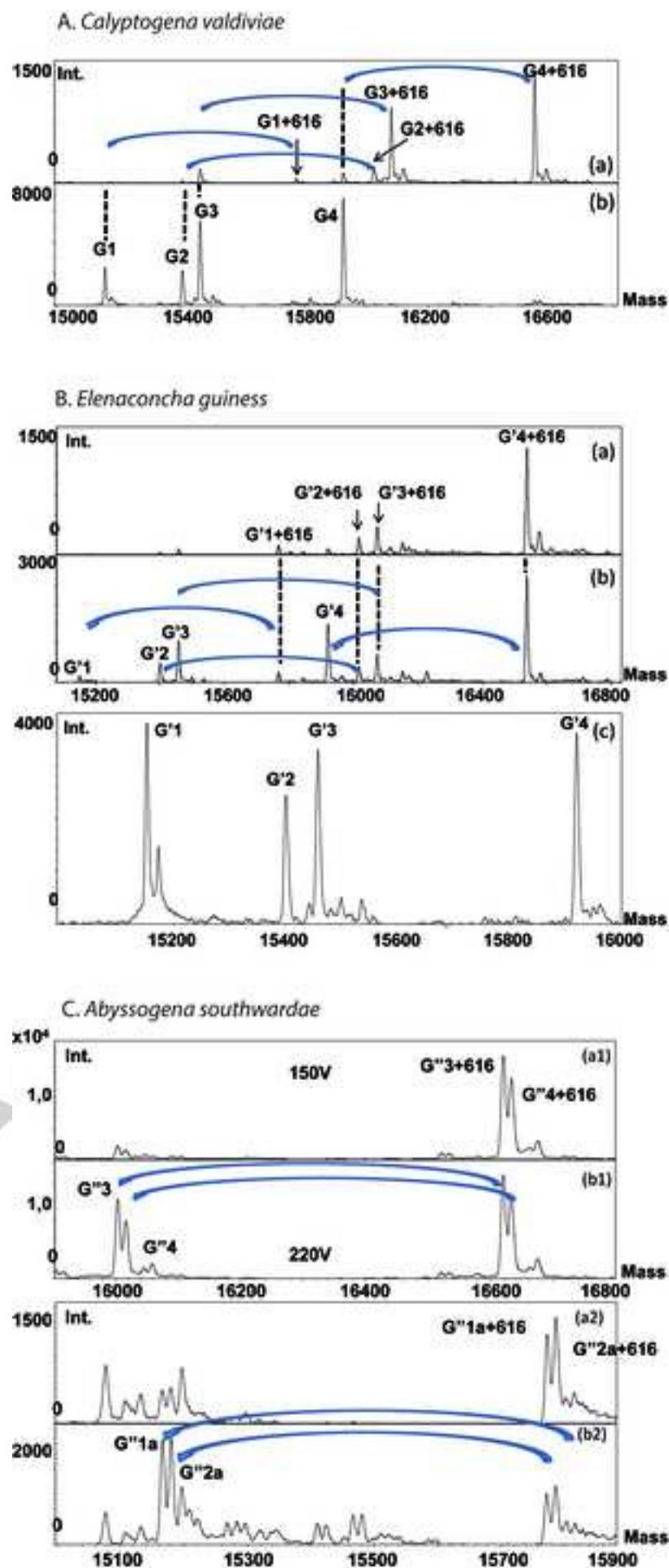
f



g

Figure3





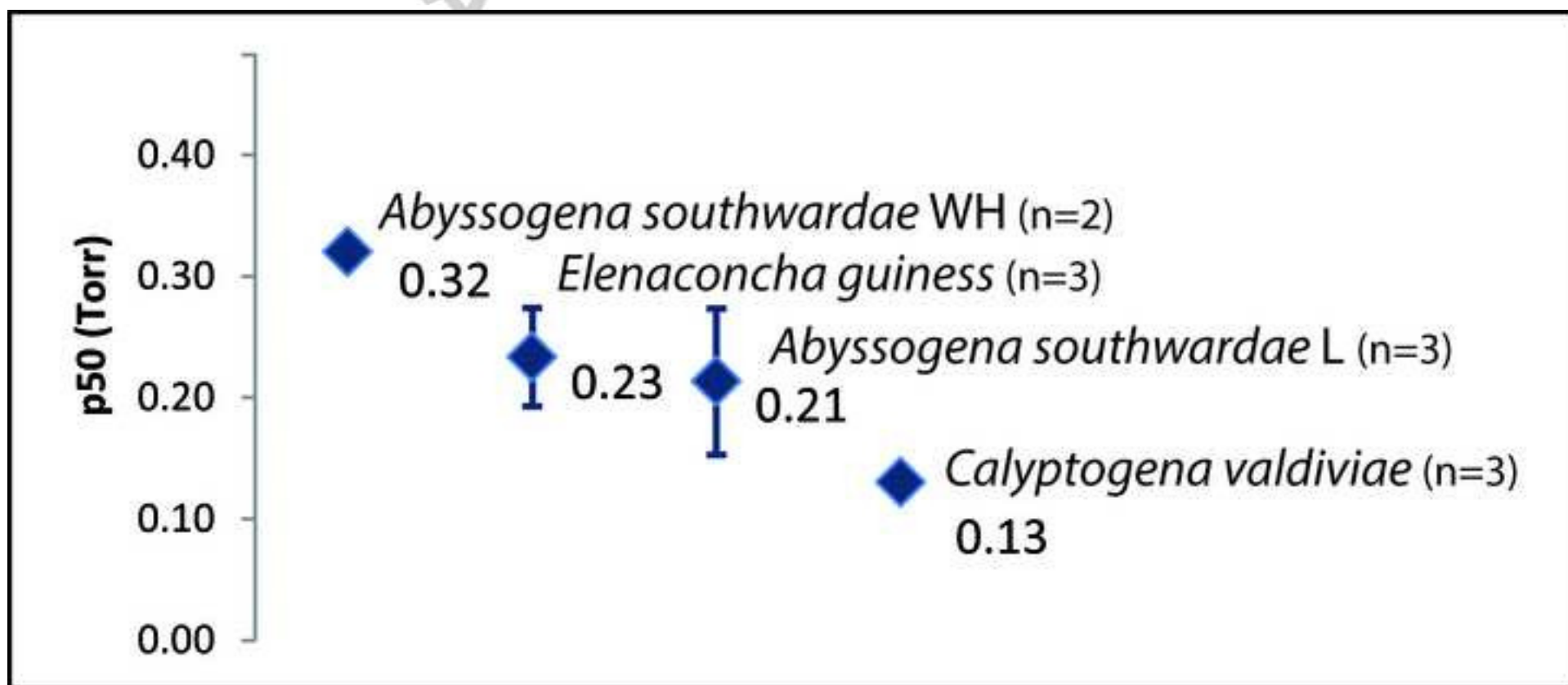


Figure 6

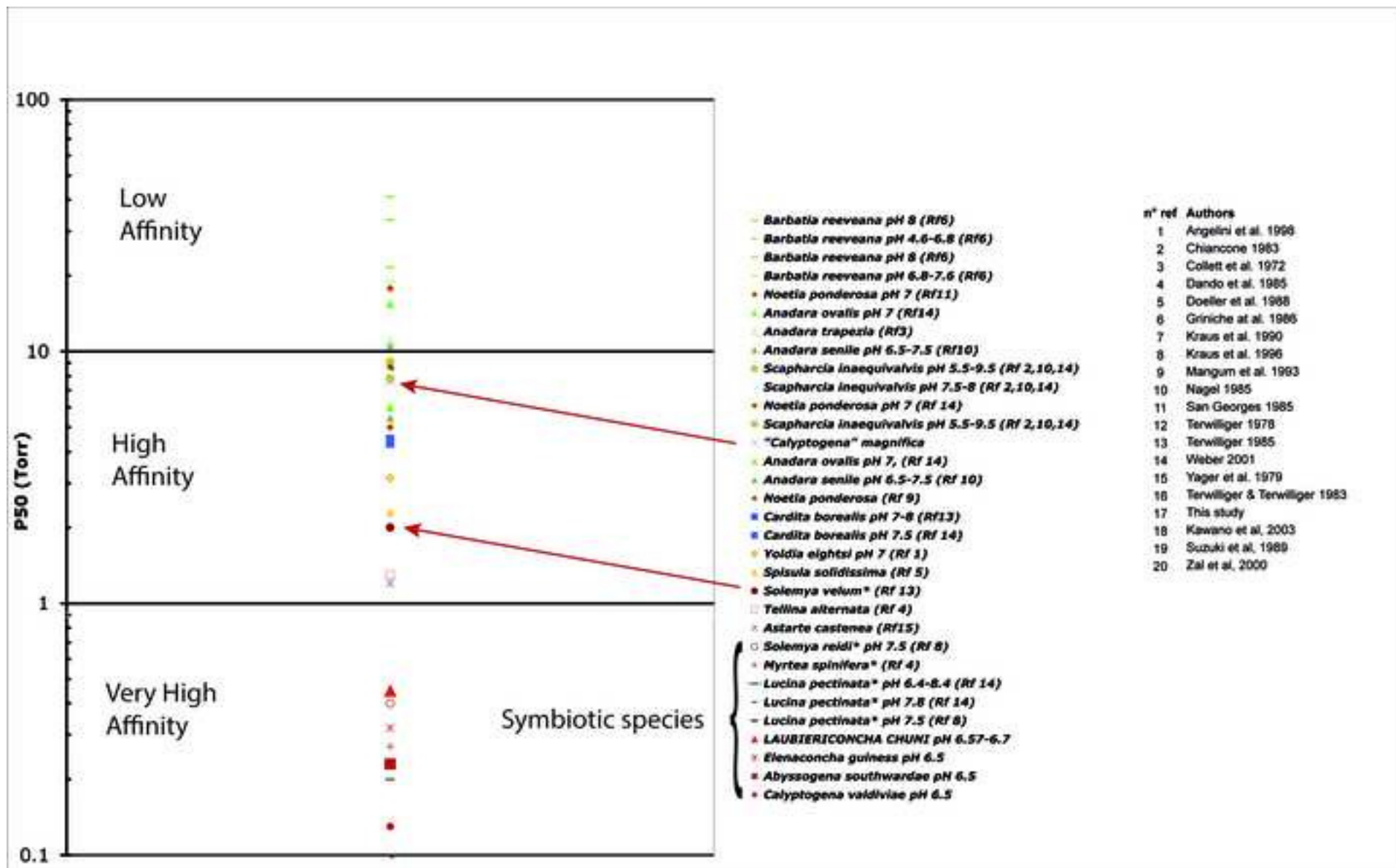


Figure7

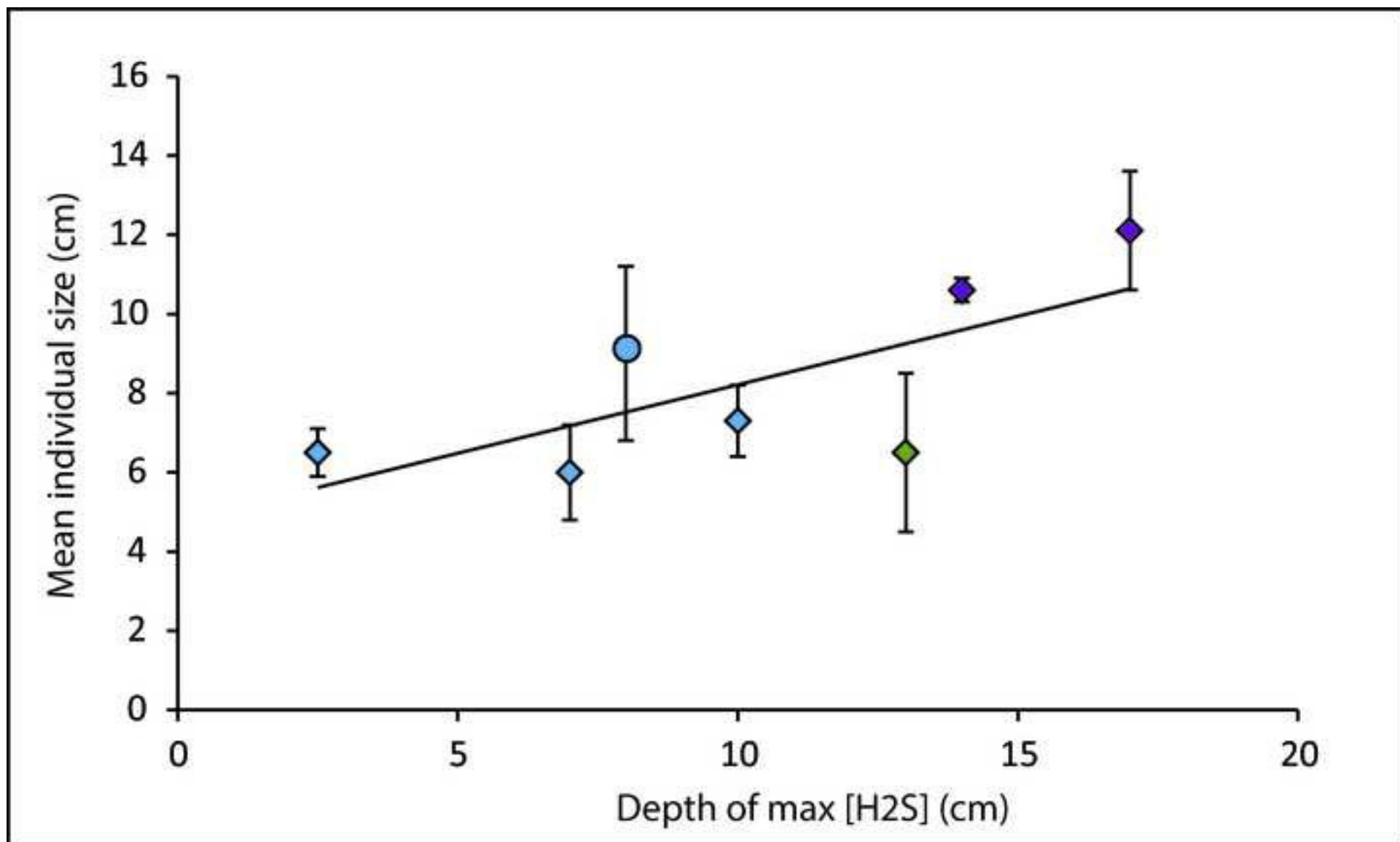


Figure8

