

The following supplement accompanies the article

Climate-driven changes in coastal marine systems of western Europe

Eric Goberville^{1,2,*}, Grégory Beaugrand^{1,3}, Benoit Sautour², Paul Tréguer⁴, SOMLIT Team⁵

¹Laboratoire d'Océanologie et de Géosciences, UMR CNRS 8187 (LOG), 28 avenue Foch, 62930 Wimereux, France

²Université Bordeaux I – Laboratoire d'Océanographie Biologique UMR CNRS 5805, Rue du Pr Jolyet, 33120 Arcachon, France

³Centre National de la Recherche Scientifique, Université des Sciences et Technologies de Lille, Lille 1, France

⁴Institut Universitaire Européen de la Mer, UMS CNRS 3113, Université Européenne de Bretagne, Technopole Brest-Iroise, Place Nicolas Copernic, 29280 Plouzané, France

⁵Coordinators of the team in 2009: Pascal Claquin and Sébastien Lefebvre (Luc-sur-mer), Eva Bucciarelli and Jacques Guillou (Brest), Pascal Morin (Roscoff), Laure Mousseau (Villefranche-sur-Mer), Patrick Raimbault (Marseille), Nicolas Savoye (Arcachon), Sami Souissi (Wimereux), Renaud Vuillemin and Stéphane Blain (Banyuls)

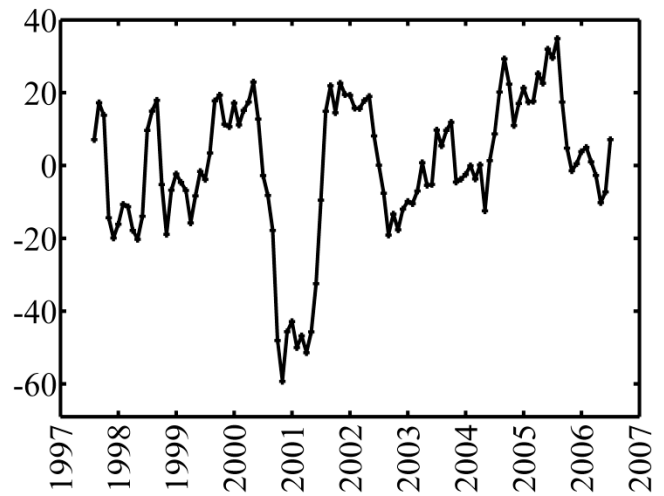
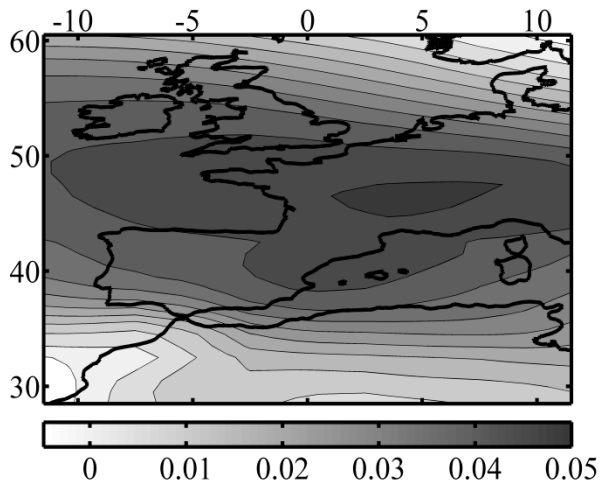
*Email: e.goberville@epoc.u-bordeaux1.fr

Marine Ecology Progress Series: 408: 129–147 (2010)

Supplement.

Year-to-year changes in regional climate. The 2 figures show PCAs performed on the 2-way table (time x space) of sea-level pressure (Fig. S1) and wind intensity (Fig. S2) to characterize the spatial (left panels) and temporal (right panels) changes in regional climate during the SOMLIT sampling period

(a) First eigenvector and principal component (48.21% of the total variability)



(b) Second eigenvector and principal component (37.17% of the total variability)

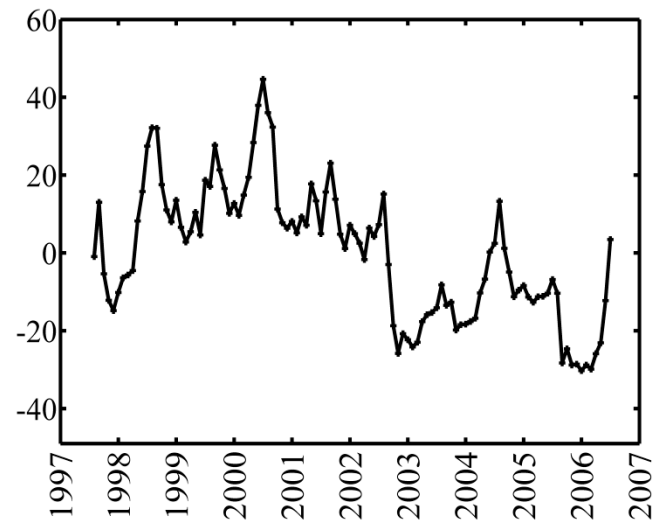
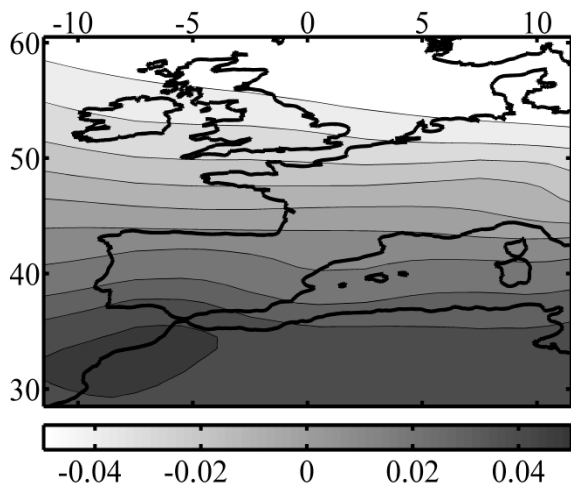
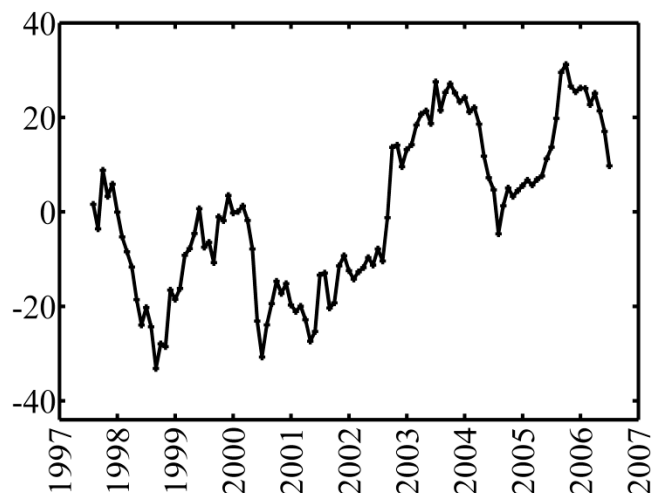
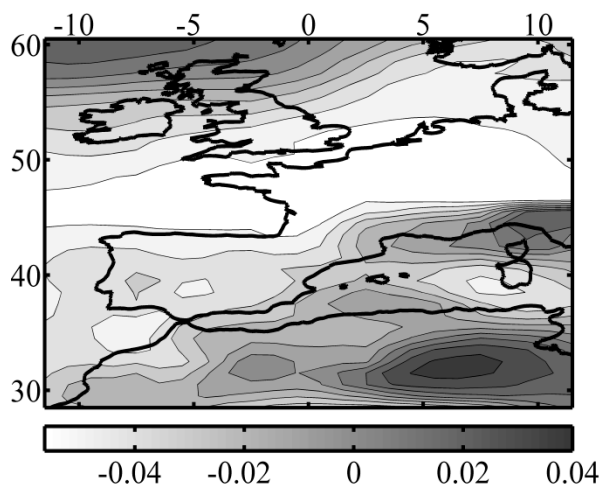


Fig. S1. Principal component analysis of the year-to-year changes in sea level pressure (1997–2006). Mapping of (a) the first eigenvector (left) and year-to-year changes in the first principal component (PC; right) and (b) the second eigenvector (left) and year-to-year changes in the second PC (right)

(a) First eigenvector and principal component (36.43% of the total variability)



(b) Second eigenvector and principal component (20.11% of the total variability)

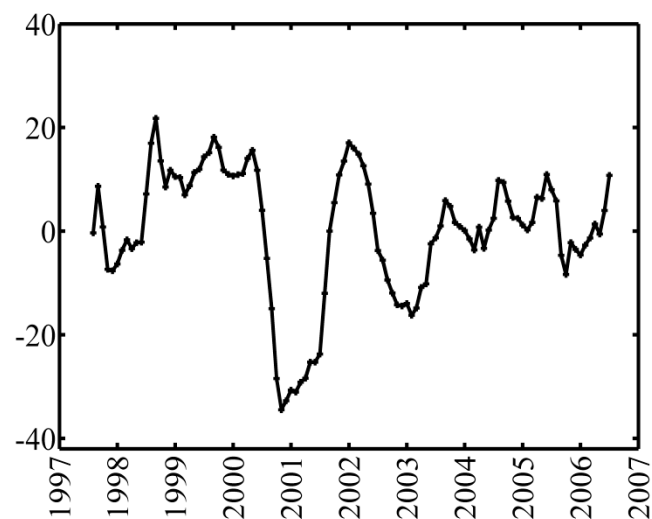
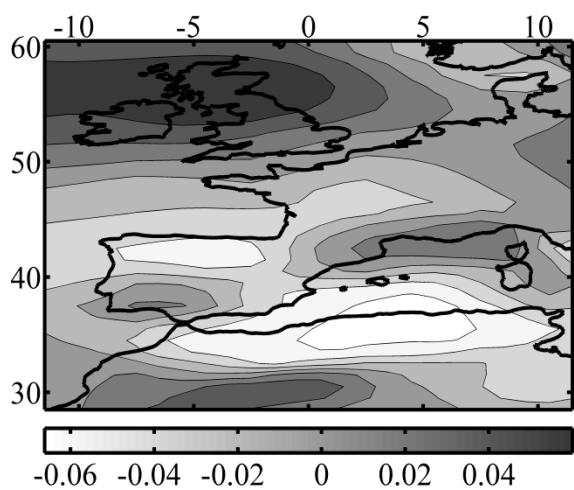


Fig. S2. Principal component analysis of the year-to-year changes in wind intensity (1997–2006). Mapping of (a) the first eigenvector (left) and year-to-year changes in the first principal component (PC; right) and (b) the second eigenvector (left) and year-to-year changes in the second PC (right)