

# Satellite-observed drop of Arctic sea-ice growth in winter 2015-2016

Robert Ricker,<sup>1</sup> Stefan Hendricks,<sup>2</sup> Fanny Girard-Ardhuin,<sup>1</sup> Lars Kaleschke,<sup>3</sup>

Camille Lique,<sup>1</sup> Xiangshan Tian-Kunze,<sup>3</sup> Marcel Nicolaus,<sup>2</sup> Thomas

Krumpen<sup>2</sup>

## Contents of this file

1. Figure S1

---

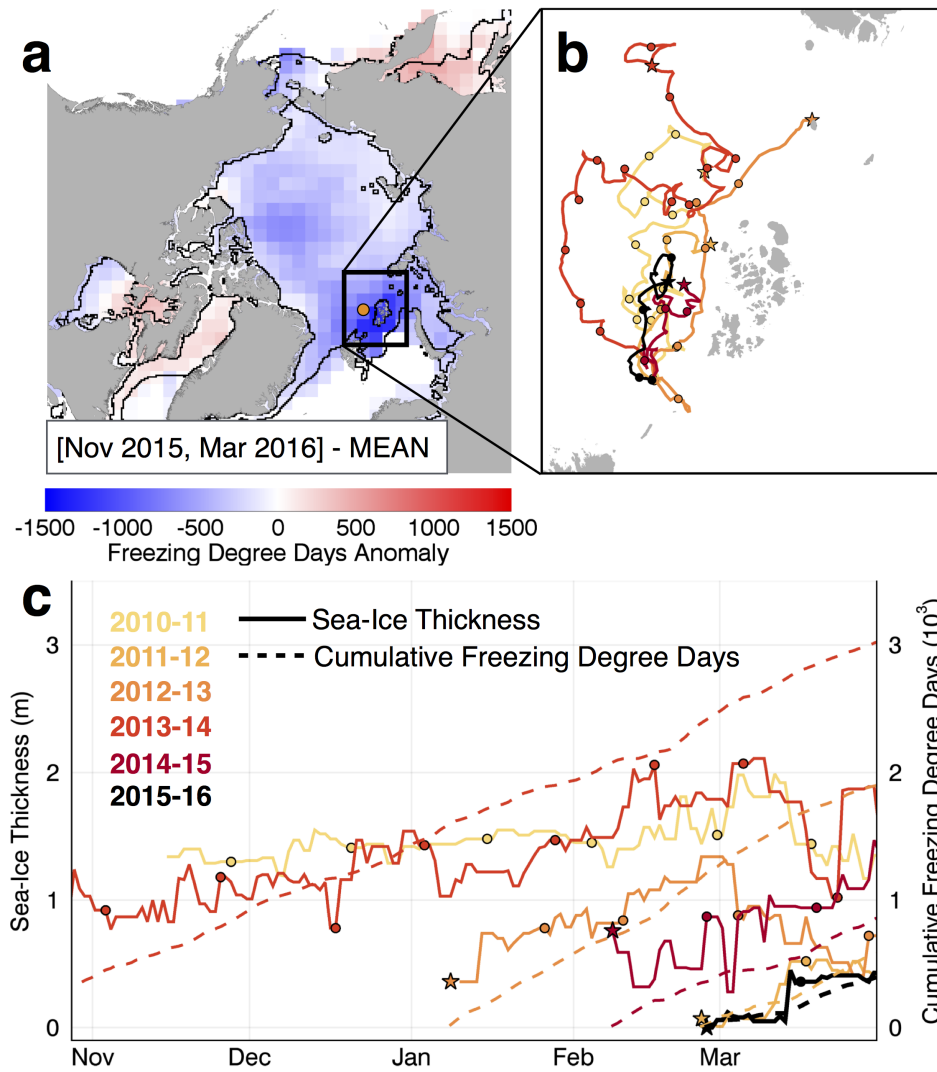
Corresponding author: R. Ricker Univ. Brest, CNRS, IRD, Ifremer, Laboratoire d'Océanographie Physique et Spatiale (LOPS), IUEM, 29280, Brest, France. (robert.ricker@ifremer.fr)

<sup>1</sup>Univ. Brest, CNRS, IRD, Ifremer, Laboratoire d'Océanographie Physique et Spatiale (LOPS), IUEM, 29280, Brest, France

<sup>2</sup>Alfred Wegener Institute, Helmholtz Centre for Polar and Marine Research, Bremerhaven, Germany.

<sup>3</sup>University of Hamburg, Germany.

**Introduction** Figure S1 supports our conclusion that the thickness anomaly in the Bar-ents Sea domain is primarily driven by thermodynamic processes.



**Figure S1.** a) Cumulative freezing degree days (FDD) anomaly observed in March 2016 and investigated area together with the aimed endpoint of the backtracking trajectories (orange circle). b) Obtained trajectories of sea ice in the investigation area. The stars mark the starting point, circles are 200 km markers. c) The sea-ice thickness and FDD along the trajectories for each season with the same markers as in b). Note that for 2010-11 the starting point and FDD graph is missing since ice survived the previous summer.