

# Supplementary information for Melting and fragmentation of two large southern ocean icebergs

N. Bouhier<sup>1</sup>, J. Tournadre<sup>1</sup>, F. Rémy<sup>2</sup>, and R. Gourves-Cousin<sup>1</sup>

<sup>1</sup>Laboratoire d'Océanographie Physique et Spatiale, IFREMER, Université Bretagne-Loire, Plouzané, France

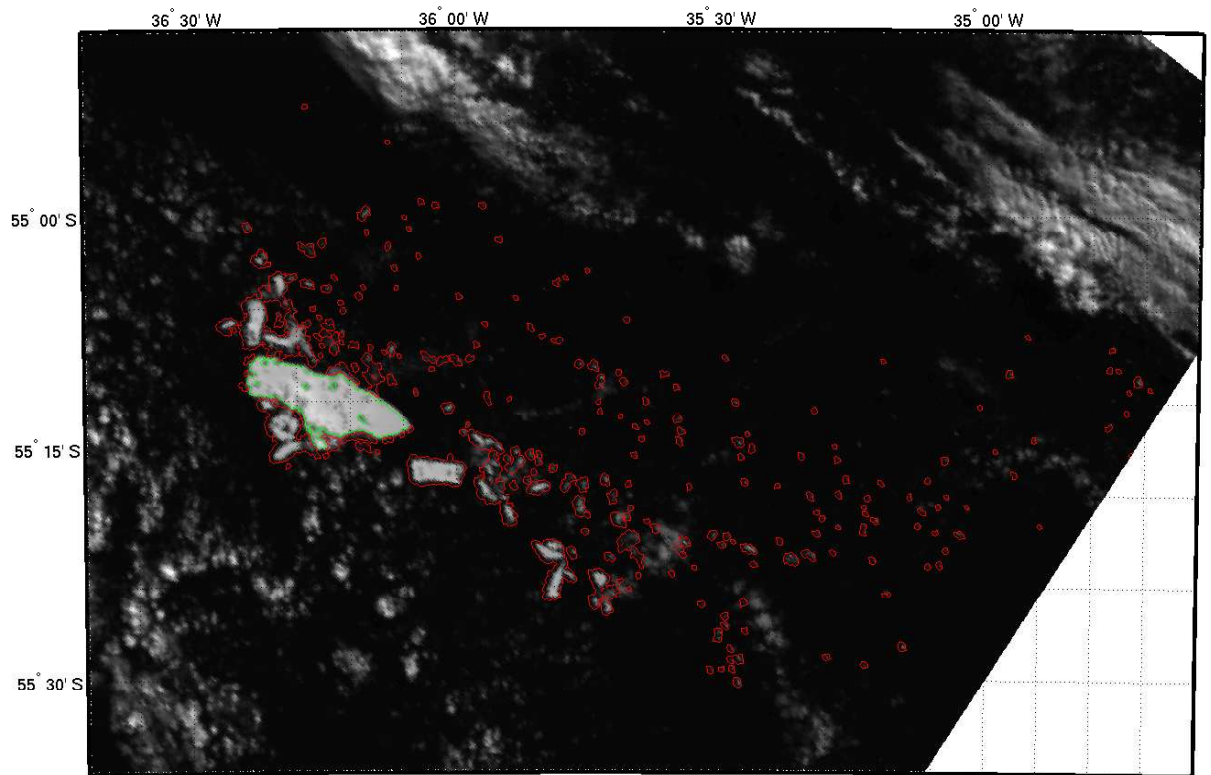
<sup>2</sup>Laboratoire d'Etudes en Géophysique et Océanographie Spatiales, UMR 5566 | CNES - CNRS , Toulouse, France

*Correspondence to:* N. Bouhier

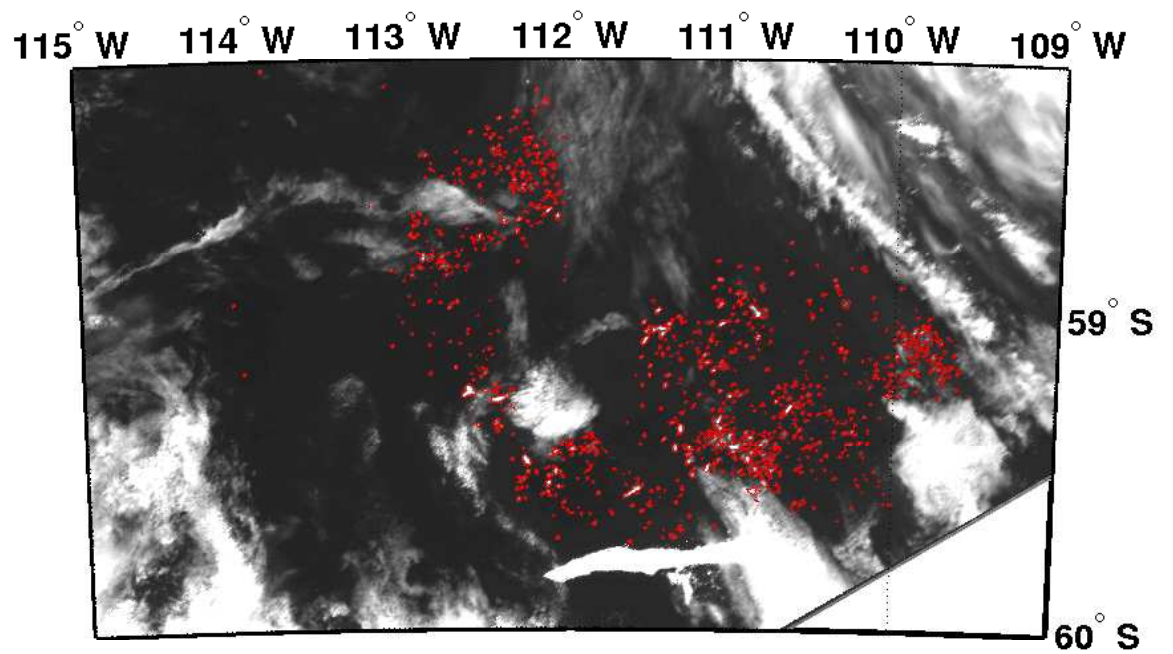
(nicolas.bouhier@ifremer.fr)

**Abstract.** The Supplementary information provides the full resolution analysis of the MODIS images for the detection of the pieces calved from C19a and B17a.

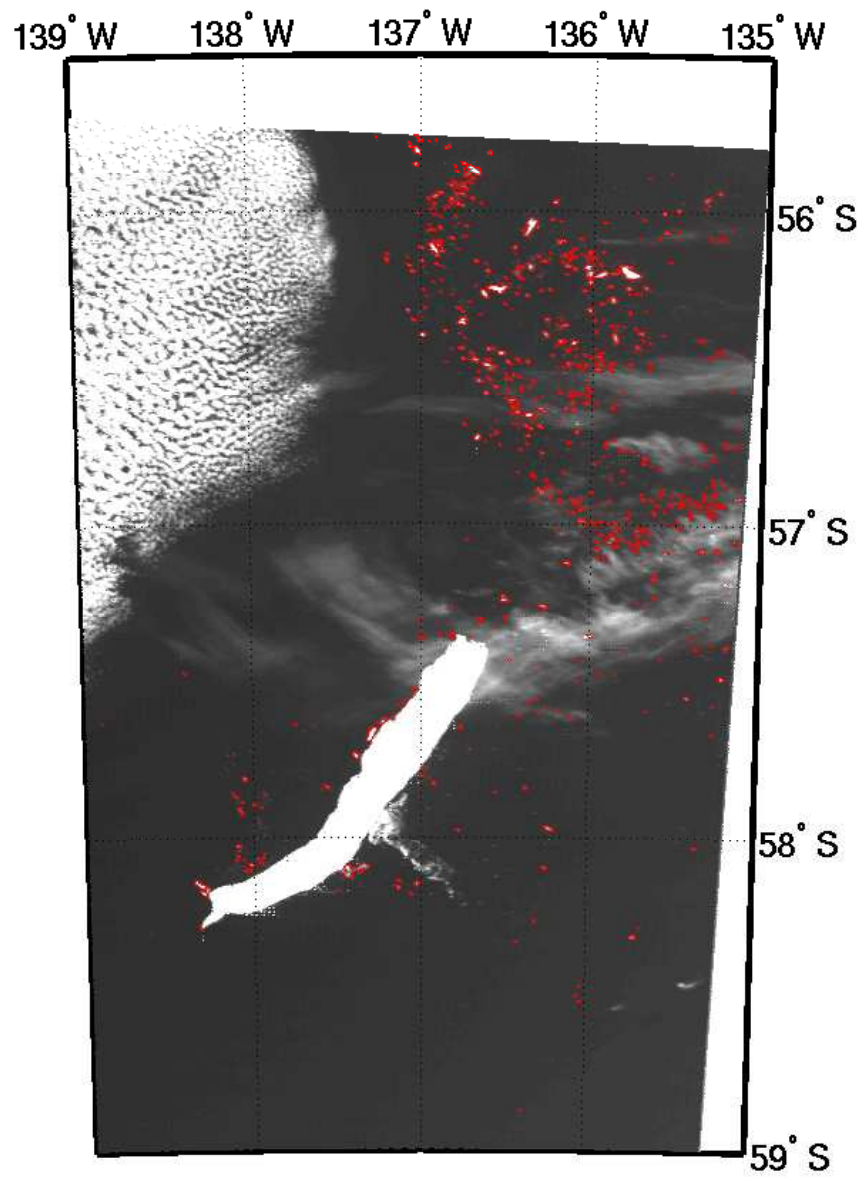
The SI presents the four full resolution MODIS used to analyse the size distribution of the fragments calved from B17a and C19a.



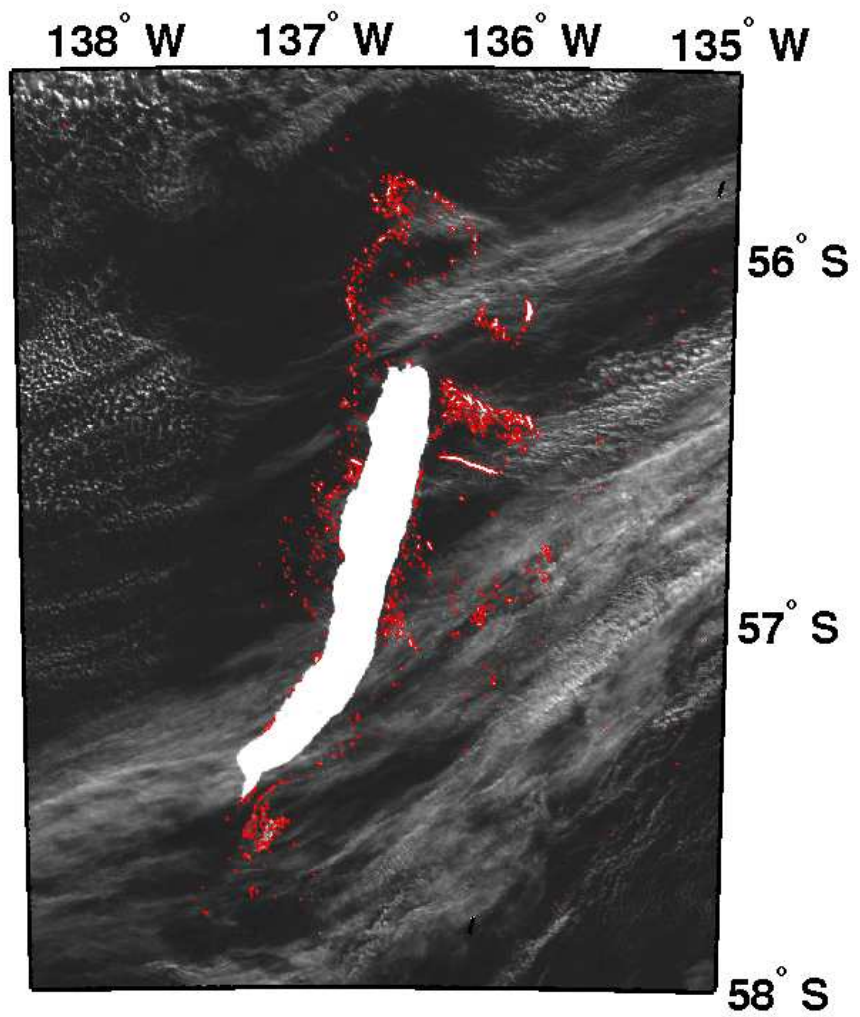
**Figure S1.** MODIS image of B17a on 03/21/2015 18:55UT. The green line delineates B17a and the red ones the smaller icebergs.



**Figure S2.** MODIS image of C19a on 02/05/2009 23:05UT. The red lines delineate the smaller icebergs.



**Figure S3.** MODIS image of C19a on 08/15/2008 18:45UT. The red lines delineate the smaller icebergs.



**Figure S4.** MODIS image of C19a on 08/21/2008 19:20UT. The red lines delineate the smaller icebergs.