



Contents lists available at ScienceDirect

Quaternary Science Reviews

journal homepage: www.elsevier.com/locate/quascirev



Corrigendum

Corrigendum to “Millennial to orbital-scale variations of drought intensity in the Eastern Mediterranean” [Quat. Sci. Rev. 133 (2016) 77–95]



Mona Stockhecke ^{a, b, c, *}, Axel Timmermann ^{d, **,} Rolf Kipfer ^{e, f, g,} Gerald H. Haug ^{b,}
Ola Kwiecien ^{e, h,} Tobias Friedrich ^{d,} Laurie Menviel ^{i, j,} Thomas Litt ^{k,} Nadine Pickarski ^{k,}
Flavio S. Anselmetti ^{c, l, m}

^a Large Lakes Observatory, University of Minnesota Duluth, 10 University Drive 206 RLB, Duluth, MN, 55812-2496, USA

^b Geological Institute, Swiss Federal Institute of Technology (ETH), Sonneggstrasse 5, 8092, Zürich, Switzerland

^c Eawag, Swiss Federal Institute of Aquatic Science and Technology, Department of Surface Waters Research and Management, Überlandstrasse 133, 8600, Dübendorf, Switzerland

^d IPRC, and Department of Oceanography, SOEST, 1680 East-West Road, University of Hawaii, Honolulu, 96822, HI, USA

^e Eawag, Swiss Federal Institute of Aquatic Science and Technology, Department of Water Resources and Drinking Water, Überlandstrasse 133, 8600, Dübendorf, Switzerland

^f Institute of Biogeochemistry and Pollutant Dynamics, Swiss Federal Institute of Technology (ETH), Universitätsstrasse 16, 8092, Zürich, Switzerland

^g Institute of Geochemistry and Petrology, Swiss Federal Institute of Technology (ETH), Clausiusstrasse 25, 8092, Zürich, Switzerland

^h Ruhr-University Bochum, Universitätsstrasse 150, 44801, Bochum, Germany

ⁱ CCRC, University of New South Wales, Matthews Building Level 4, Sydney, NSW, 2052, Australia

^j ARC Centre of Excellence for Climate System Science, Australia

^k Steinmann Institute of Geology, Mineralogy and Paleontology, Bonn University, Nussallee 8, 53115, Bonn, Germany

^l Institute of Geological Sciences, University of Bern, Baltzerstrasse 1b3, 3012, Bern, Switzerland

^m Oeschger Centre for Climate Change Research (OCCR), University of Bern, Switzerland

When this paper was first published, there was an error in Fig. 11. The correct figure is printed overleaf:

DOI of original article: <http://dx.doi.org/10.1016/j.quascirev.2015.12.016>.

* Corresponding author. Large Lakes Observatory, University of Minnesota Duluth, 10 University Drive 206 RLB, Duluth, MN, 55812-2496, USA.

** Corresponding author.

E-mail addresses: mstockhe@d.umn.edu (M. Stockhecke), axel@hawaii.edu (A. Timmermann).

<http://dx.doi.org/10.1016/j.quascirev.2016.07.019>

0277-3791/© 2015 Elsevier Ltd. All rights reserved.

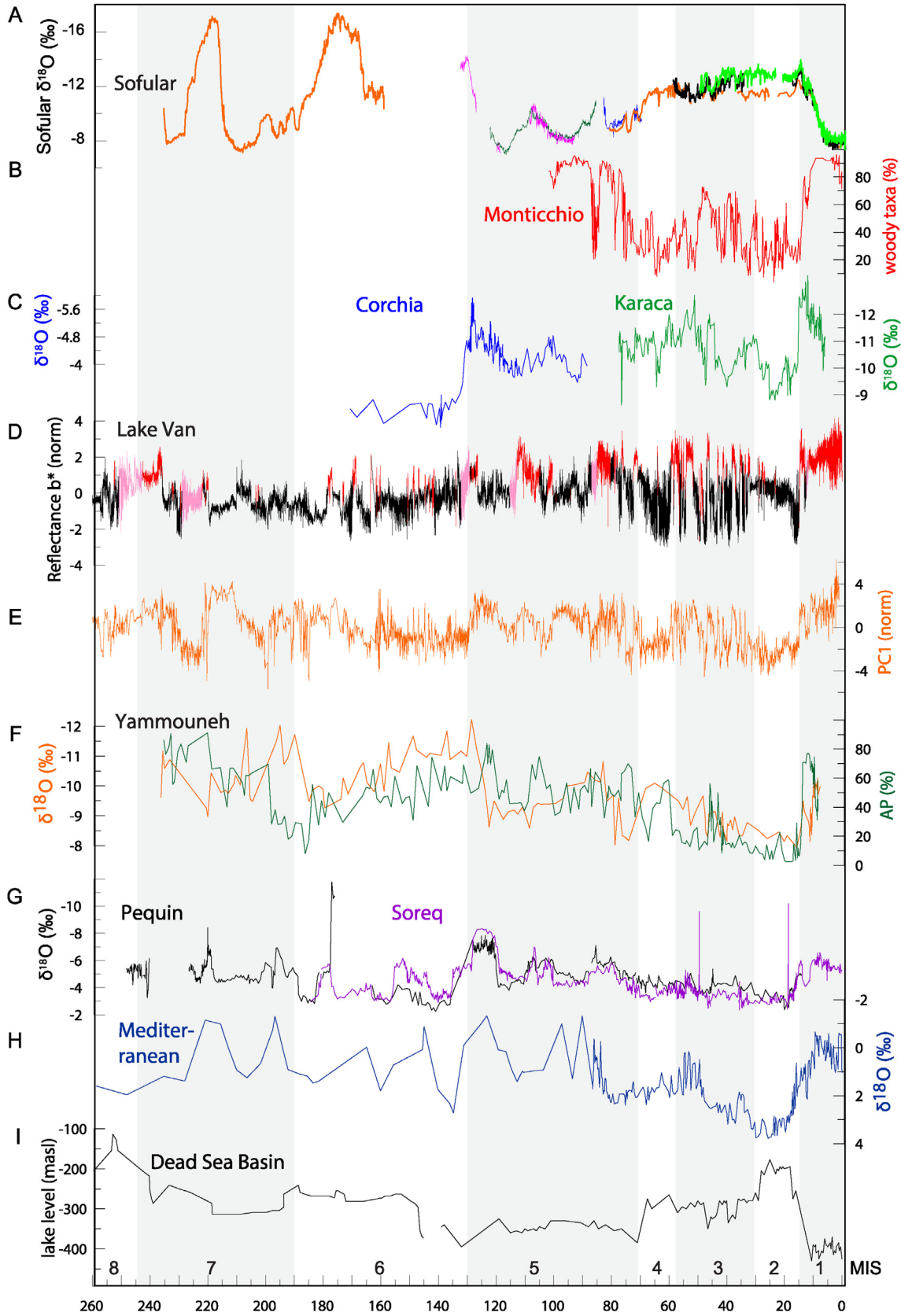


Fig. 11. Comparison of different paleo-archives over 260 ka from the Mediterranean and the Levant. (A) $\delta^{18}\text{O}$ from the Sofular cave (Badertscher et al., 2011); (B) Woody taxa from the Lago Grande di Monticchio (Allen et al., 1999); (C) $\delta^{18}\text{O}$ from the Karaca cave (Rowe et al., 2012) and $\delta^{18}\text{O}$ from the Corchia cave (Drysdale et al., 2005); (D) Lake Van B^* (this study); (E) Hydroclimate PC1 (this study); (F) $\delta^{18}\text{O}$ and

Arboreal pollen (AP) from the Lake Yammoûneh (Develle et al., 2011; Gasse et al., 2015); (G) d18O from the Soreq and Peqiin caves (Bar-Matthews et al., 2003); (H) d18O from the Eastern Mediterranean Sea (Almogi-Labin et al., 2009; Kroon et al., 1998); (I) lake levels of the Dead Sea Basin (DSB) lacustrine bodies (Waldmann et al., 2009; Waldmann et al., 2010). All data are shown on it original timescales. Gray shaded area represent the interglacials following the Marine Isotope Stage (MIS) boundaries (Lisiecki and Raymo, 2005).