

Supplement of *Clim. Past*, 12, 697–711, 2016  
<http://www.clim-past.net/12/697/2016/>  
doi:10.5194/cp-12-697-2016-supplement  
© Author(s) 2016. CC Attribution 3.0 License.



Climate  
of the Past

Open Access

The logo for the European Geosciences Union (EGU), featuring the letters 'EGU' in a bold, sans-serif font, with a stylized gear or circular element behind the 'E'.

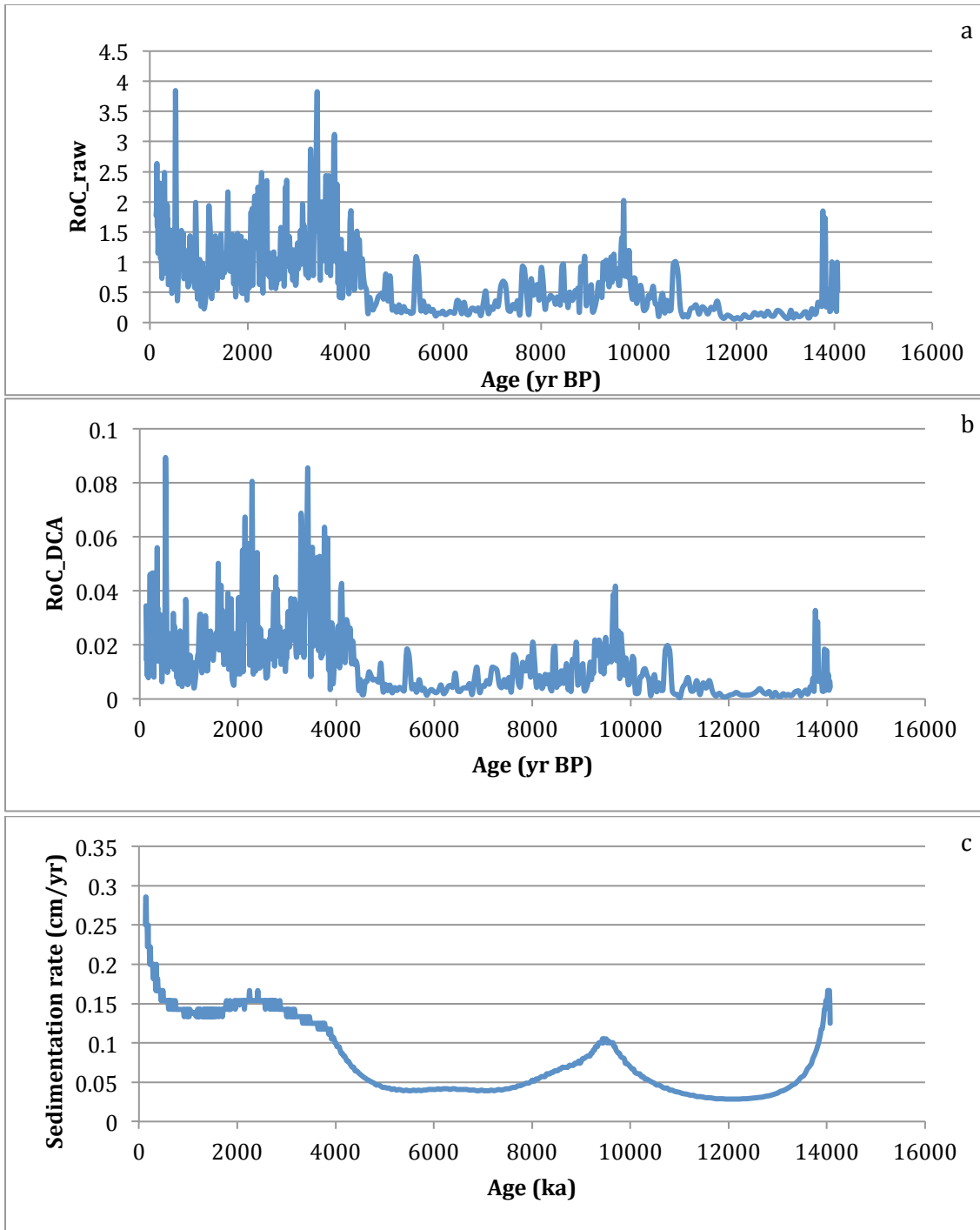
*Supplement of*

## **Millennial-scale vegetation changes in the tropical Andes using ecological grouping and ordination methods**

**Dunia H. Urrego et al.**

*Correspondence to:* Dunia H. Urrego (d.urrego@exeter.ac.uk)

The copyright of individual parts of the supplement might differ from the CC-BY 3.0 licence.



**Figure S1.** Rates of change (RoC) and sedimentation rate calculated for La Cocha record. a: RoC calculated based on Euclidean distance between subsequent samples using raw percentages, plotted against age. b: RoC calculated based on a Euclidean distance between the first four DCA axes, plotted against age. c: Sedimentation rate plotted against age.