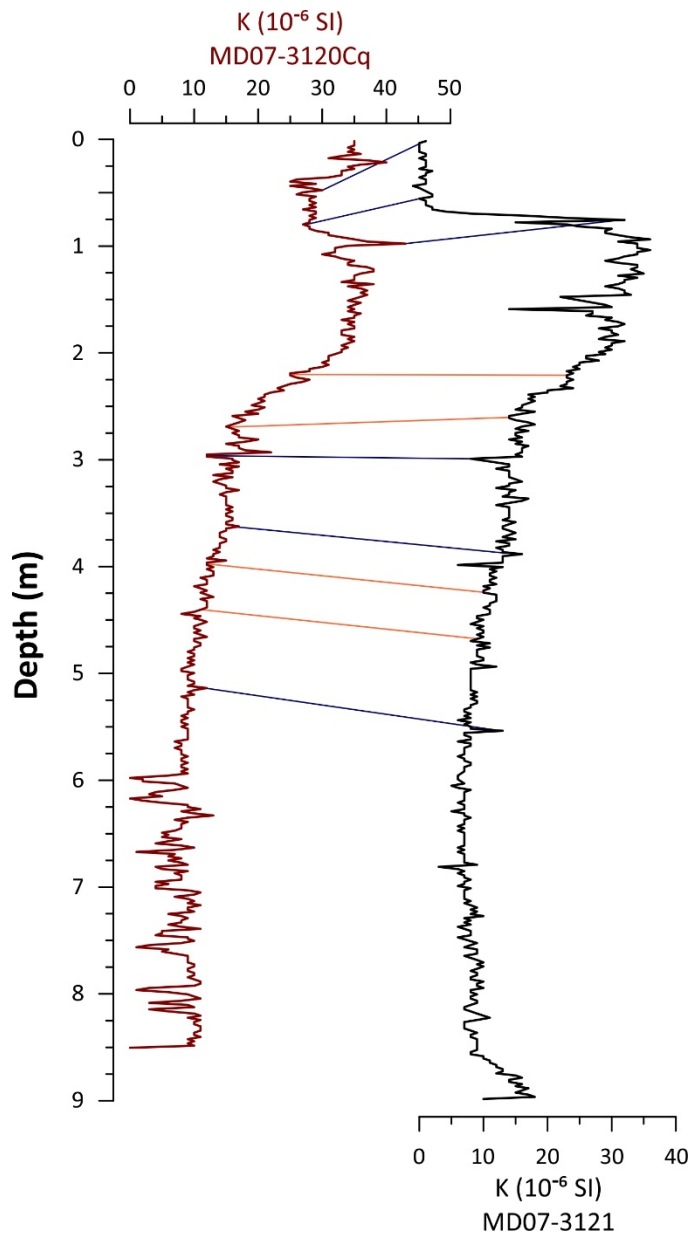
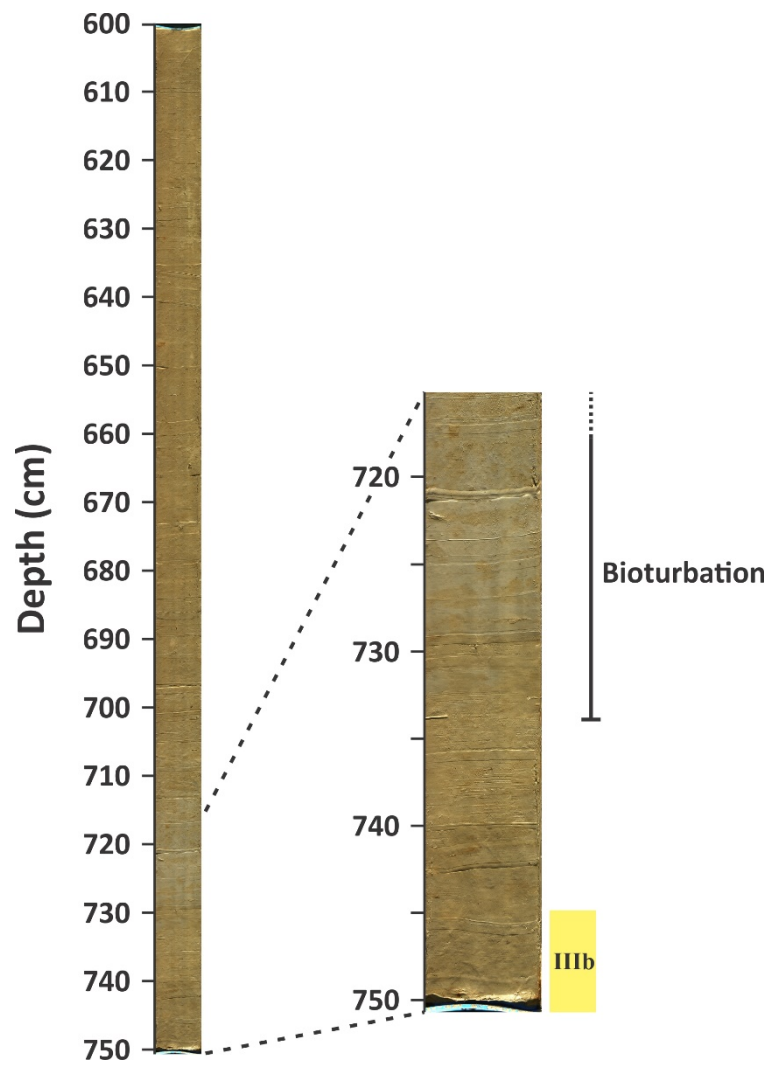


Appendix

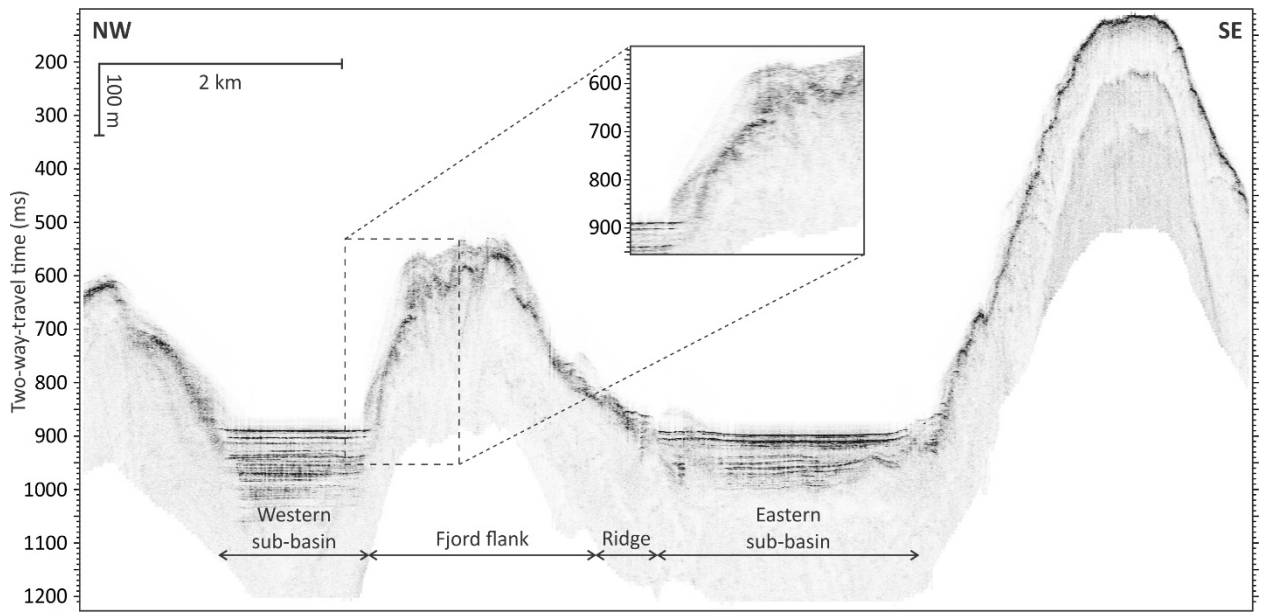
This document contains supplementary material to “First evidence of a mid-Holocene earthquake-triggered megaturbidite south of the Chile Triple Junction” by Loïc Piret, Sebastien Bertrand, Catherine Kissel, Ricardo De Pol-Holz, Alvaro Tamayo Hernando, Maarten Van Daele.



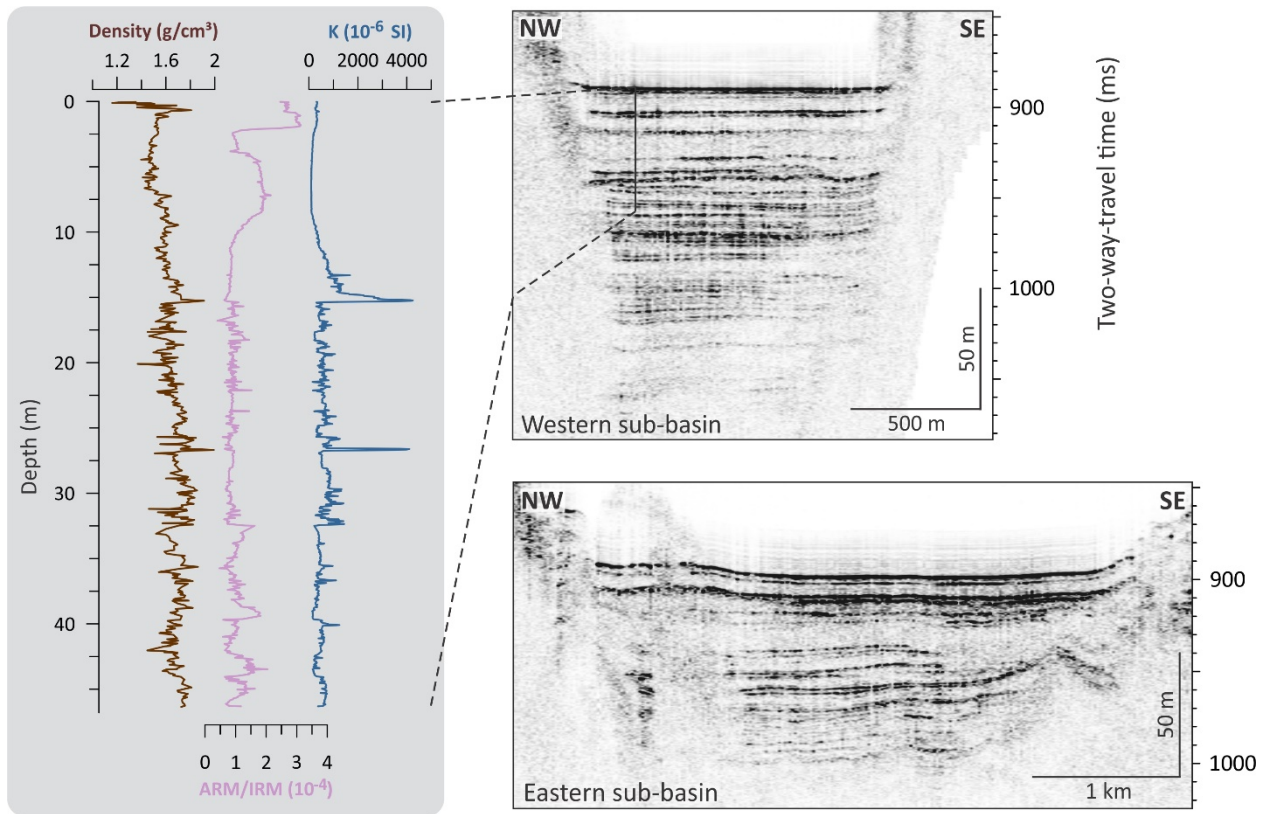
Appendix 1: Correlations between cores MD07-3120Cq and MD07-3121 based on magnetic susceptibility (MSCL on board R/V *Marion Dufresne*) show that the top 37 cm of sediment is missing at the top of core MD07-312. Blue correlation lines are drawn based upon identical parameter trends. Orange correlation lines represent the depths of the radiocarbon-dated samples collected in MD07-3120Cq



Appendix 2: Line Scan of MD07-3121 section V (750–600 cm) showing the bioturbation above zone IIIb (see sections 3.3 and 4.1).



Appendix 3: Sub-bottom profile without interpretations. See figure 3 for the interpreted profile.



Appendix 4: Detailed view on sedimentary packages in the two sub-basins in the sub-bottom profile without interpretations. Core MD07-3121 is shown on the left with full core log of density, ARM/IRM and magnetic susceptibility. See figure 4 for the interpreted profile and core log.