

[The southwest Indian Ocean Bathymetric Compilation (swIOBC)]

B. Dorschel¹, L. Jensen¹, J. E. Arndt¹, G.-J. Brummer^{2,3}, H. de Haas², A. Fielies⁴, D. Franke⁵, W. Jokat¹, R. Krocker¹, D. Kroon⁶, J. Pätzold⁷, R. R. Schneider⁸, V. Spieß⁹, H. Stollhofen¹⁰, G. Uenzelmann-Neben¹, M. Watkeys¹¹, E. Wiles¹¹

¹Alfred Wegener Institute Helmholtz Centre for Polar and Marine Research, Bremerhaven, Germany

²NIOZ – Royal Netherlands Institute for Sea Research and Utrecht University, Texel, The Netherlands

³Department of Earth Sciences, Faculty of Earth and Life Sciences, VU University Amsterdam, HV Amsterdam, The Netherlands

⁴Petroleum Agency South Africa, Cape Town, South Africa

⁵Federal Institute for Geosciences and Natural Resources, Hannover, Germany

⁶School of GeoSciences, Grant Institute, The King's Buildings, University of Edinburgh, UK

⁷MARUM – Center for Marine Environmental Sciences, University of Bremen, Bremen, Germany

⁸Institute for Geosciences, Kiel University, Kiel, Germany

⁹Geoscience Department University Bremen, Bremen, Germany

¹⁰Geo-Center of Northern Bavaria, Friedrich-Alexander University of Erlangen-Nuremberg, Erlangen, Germany

¹¹Geological Sciences, University of KwaZulu-Natal, Durban, South Africa

Corresponding author: Boris Dorschel (Boris.Dorschel@awi.de)

Contents of this file

Figures S1 to S3

Tables S1

Additional Supporting Information (Files uploaded separately)

Captions for Tables S1

Introduction

The supporting information contains meta-data and additional data to assess the quality of the swIOBC. Figure (S1-S3) and data grids (available at <https://doi.org/10.1594/PANGAEA.880618>) provide information to assess the accuracy of the swIOBC.

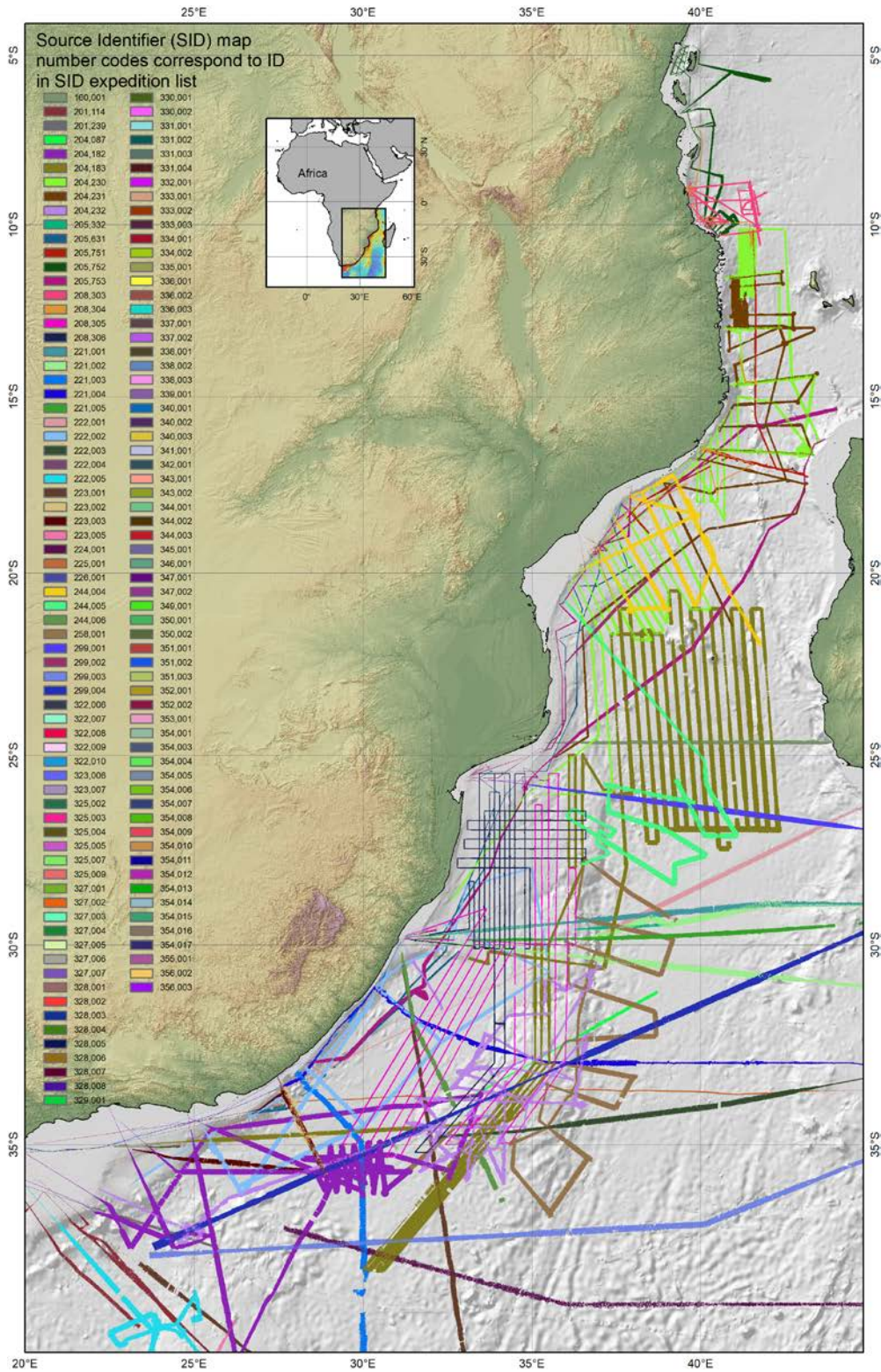


Figure S1. Source Identifier (SID) Map. Number codes correspond to IDs in SID expedition list (S4) that contain additional meta-data for the source data.

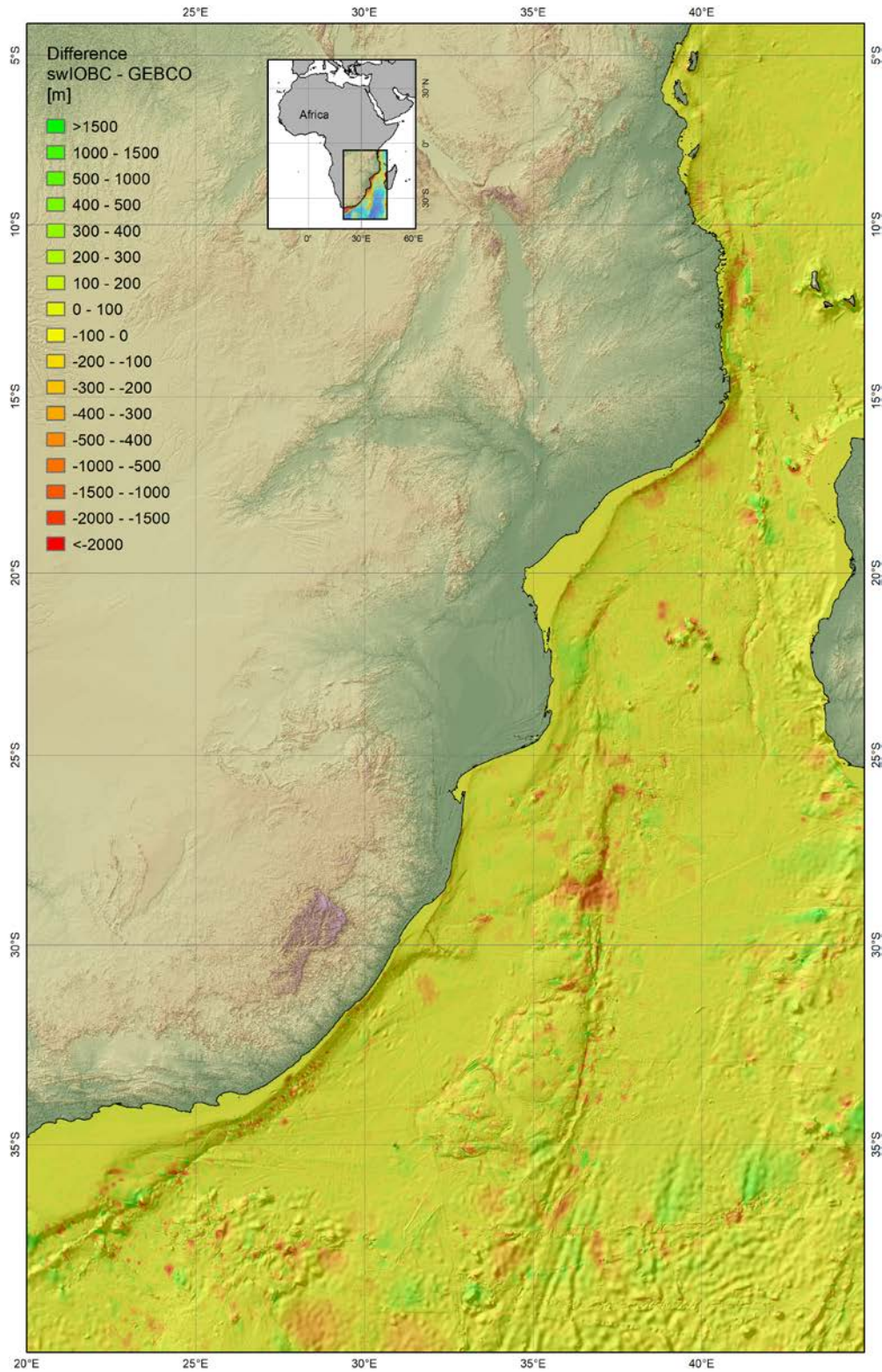


Figure S2. Difference map showing the offset of the swIOBC to the GEBCO_14 Digital Bathymetric Model (DBM).

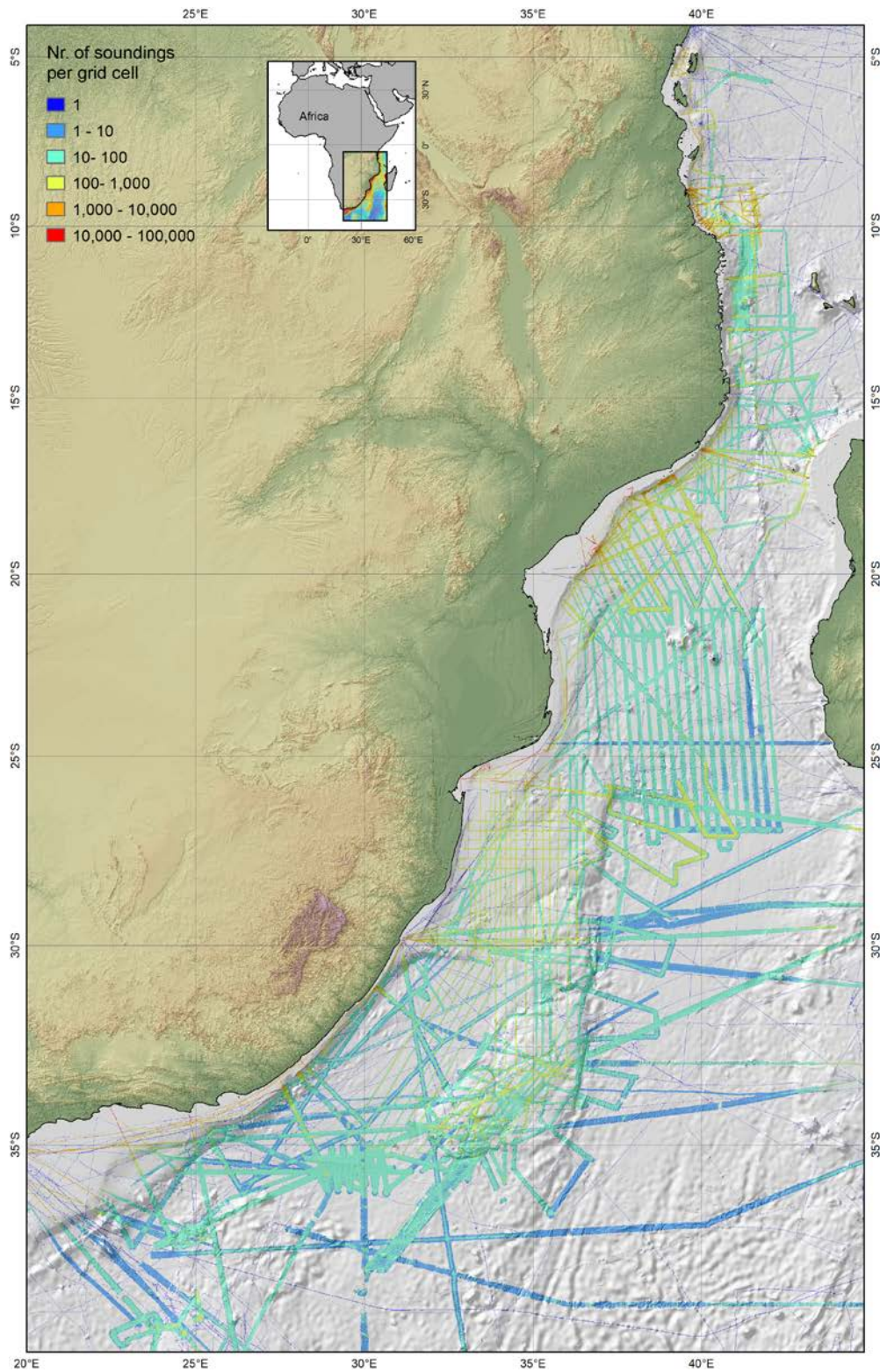


Figure S3. Map showing the number of soundings that were include in the calculation of a grid cell.

Name	Vessel	Year	Type	Source	Reference (PI)	Weight	ID
MIRAI MR03-K04 Leg5			Grid	JAMSTEC		1000	160001
ANT-XI/4	Polarstern	1994	Multibeam	AWI	Kuhn	100	201114
ANT-XXIII/9	Polarstern	2007	Multibeam	AWI	Hubberten	200	201239
SO87	Sonne	1993	Multibeam	BSH	Stoffers	10	204087
SO182	Sonne	2005	Multibeam	AWI	Uenzelmann-Neben	200	204182
SO183	Sonne	2005	Multibeam	AWI	Jokat	200	204183
SO230	Sonne	2014	Multibeam	AWI	Jokat	200	204230
SO231	Sonne	2014	Multibeam	AWI	Franke	200	204231
SO232	Sonne	2014	Multibeam	AWI	Uenzelmann-Neben	200	204232
M33/2	Meteor	1995	Multibeam	BSH	Halbach	100	205332
M63/1	Meteor	2005	Multibeam	BSH	Paetzold	200	205631
M75/1B	Meteor	2008	Multibeam	BSH	Ridderinkhof	200	205751
M75/2	Meteor	2008	Multibeam	BSH	Paetzold	200	205752
M75/3	Meteor	2008	Multibeam	BSH	Schneider	200	205753
64PE303	Pelagia	2009	Multibeam	NIOZ	D. Kroon	200	208303
64PE304	Pelagia	2009	Multibeam	NIOZ	Geert-Jan Brummer	200	208304
64PE305	Pelagia	2009	Multibeam	AWI	Jokat	200	208305
64PE306	Pelagia	2009	Multibeam	AWI	Jokat	200	208306
KNOX12RR	Roger Revelle	2007	Multibeam	NGDC	MacKinnon	200	221001
KNOX13RR	Roger Revelle	2008	Multibeam	NGDC	MacKinnon	200	221002
KNOX14RR	Roger Revelle	2008	Multibeam	NGDC	Swift	200	221003
RR0903	Roger Revelle	2009	Multibeam	NGDC	Swift	200	221004
RR1201	Roger Revelle	2012	Multibeam	NGDC	Lien	200	221005
SOJN04MV	Melville	1997	Multibeam	NGDC	Whitworth	100	222001
VANC08MV	Melville	2003	Multibeam	NGDC	Beal	200	222002
VANC10MV	Melville	2003	Multibeam	NGDC	Blackman	200	222003
MV1112	Melville	2011	Multibeam	NGDC	Beal	200	222004
MV1202	Melville	2012	Multibeam	NGDC	Wood	200	222005
KN145L16	Knorr	1996	Multibeam	NGDC	Grindlay	100	223001
KN197-06	Knorr	2010	Multibeam	NGDC	Beal	200	223002
KN210-02	Knorr	2013	Multibeam	NGDC	Beal	200	223003
KN162L07	Knorr	2000	Multibeam	NGDC	NN	100	223004
KN162L09	Knorr	2001	Multibeam	NGDC	Dick	200	223005
NBP0406	Nathaniel B. Palmer	2004	Multibeam	NGDC	Cande	200	224001
RC2709	Robert Conrad	1986	Multibeam	NGDC	Dick	10	225001
EW9309	Maurice Ewing	1993	Multibeam	NGDC	Schilling C. Reichert, D.	100	226001
MD163	Marion Dufresne	2007	Multibeam	AWI	Aslanian	200	244004
MD164	Marion Dufresne	2007	Multibeam	AWI		200	244005
MD125	Marion Dufresne	2002	Multibeam	Ifremer	D. Aslanian, E. Humler, E. Michel	200	244006
EC2007	Akademic Boris Petrov	2007	Multibeam	PASA	A. Fielies	200	258001
HEE1103T	unknown	2011	Multibeam	NAVOCEANO	unknown	200	299001

Name	Vessel	Year	Type	Source	Reference (PI)	Weight	ID
HEE1106t	unknown	2011	Multibeam	NAVOCEANO	unknown	200	299002
HEN1101Tfp	unknown	2011	Multibeam	NAVOCEANO	unknown	200	299003
SUM1003t	unknown	2010	Multibeam	NAVOCEANO	unknown	200	299004
GEBCO	none	2014	Other			1	300000
TOPO15	none	2014	Other			1	300001
PROT05MV	Melville	1984	Singlebeam	NGDC	R.L.FISHER	5	322006
INMD08MV	Melville	1978	Singlebeam	NGDC	FISHER R.L.	5	322007
ANTP08MV	Melville	1971	Singlebeam	NGDC	FISHER R.L.	5	322008
ANTP09MV	Melville	1971	Singlebeam	NGDC	ISAACS J.D.	5	322009
ANTP10MV	Melville	1971	Singlebeam	NGDC	SHOR G.	5	322010
KN145L14	Knorr	1995	Singlebeam	NGDC	JOHNSON	5	323006
KN145L9	Knorr	1995	Singlebeam	NGDC	TOOLE	5	323007
RC1704	Robert D. Conrad	1974	Singlebeam	NGDC	A. AMOS, J. WEISSEL	5	325002
RC1705	Robert D. Conrad	1974	Singlebeam	NGDC	JACOBS, STANLEY	5	325003
RC1706	Robert D. Conrad	1974	Singlebeam	NGDC	A. BE' J. CHUTE, E.	5	325004
RC1401	Robert D. Conrad	1971	Singlebeam	NGDC	SIMPSON	5	325005
RC1313	Robert D. Conrad	1970	Singlebeam	NGDC	G. BRYAN	5	325006
RC1215	Robert D. Conrad	1969	Singlebeam	NGDC	R. LEYDEN	5	325007
RC1104	Robert D. Conrad	1967	Singlebeam	NGDC	G. DICKSON	5	325008
RC0802	Robert D. Conrad	1964	Singlebeam	NGDC	G. BRYAN	5	325009
CIRC07AR	Argo	1968	Singlebeam	NGDC	FISHER R.L.	5	327001
CIRC08AR	Argo	1968	Singlebeam	NGDC	VANANDEL T.	5	327002
LUSI7AAR	Argo	1963	Singlebeam	NGDC	KNAUSS J.A.	5	327003
LUSI7CAR	Argo	1963	Singlebeam	NGDC	TAFT B.A.	5	327004
LUSI7DAR	Argo	1963	Singlebeam	NGDC	KEELING D.	5	327005
LUSI03AR	Argo	1962	Singlebeam	NGDC	KNAUSS J.	5	327006
LUSI04AR	Argo	1962	Singlebeam	NGDC	KNAUSS J.	5	327007
A2093L04	Atlantis II	1976	Singlebeam	NGDC	DR.FREDRICK SAYLES	5	328001
A2093L05	Atlantis II	1976	Singlebeam	NGDC	unknown DR.ELIZABETH	5	328002
A2093L07	Atlantis II	1976	Singlebeam	NGDC	BUNCE	5	328003
A2093L10	Atlantis II	1976	Singlebeam	NGDC	DR.BRUCE WARREN	5	328004
A2067L03	Atlantis II	1972	Singlebeam	NGDC	DR. ELAZAR UCHUPI	5	328005
A2015L03	Atlantis II	1965	Singlebeam	NGDC	DR. EARL HAYES	5	328006
A2015L04	Atlantis II	1965	Singlebeam	NGDC	DR HENRY STOMMEL	5	328007
A2008L02	Atlantis II	1963	Singlebeam	NGDC	DR PUAL FRY HYDROGRAPHER OF	5	328008
19920016	Beaver	1989	Singlebeam	NGDC	THE NAVY HYDROGRAPHER OF	5	329001
19920150	Boxer	1992	Singlebeam	NGDC	THE NAVY HYDROGRAPHER OF	5	330001
19920151	Boxer	1992	Singlebeam	NGDC	THE NAVY	5	330002
CH099L04	Chain	1970	Singlebeam	NGDC	HOSKINS	5	331001
CH099L05	Chain	1970	Singlebeam	NGDC	unknown	5	331002

Name	Vessel	Year	Type	Source	Reference (PI)	Weight	ID
CH099L07	Chain	1970	Singlebeam	NGDC	unknown	5	331003
CH099L08	Chain	1970	Singlebeam	NGDC	unknown	5	331004
CD2987	Charles Darwin	1987	Singlebeam	NGDC	TOOLE	5	332001
DIS207	Discovery	1994	Singlebeam	NGDC	R.R.DICKSON,MAFF DR R.T. POLLARD,	5	333001
DIS201	Discovery	1993	Singlebeam	NGDC	IOSDL	5	333002
DI101	Discovery	1979	Singlebeam	NGDC	D. ROBERTS GRAVITY CHIEF	5	333003
DME10	Dmitry Mendeleev	1973	Singlebeam	NGDC	KORENFELD V. GRAVITY CHIEF	5	334001
DME07	Dmitry Mendeleev	1971	Singlebeam	NGDC	BAGRAMIJNC	5	334002
SHACK_75	Ernest Shackleton	1975	Singlebeam	NGDC	P.BARKER	5	335001
ANTAC24	Fuji	1983	Singlebeam	NGDC	unknown	5	336001
ANTAC21B	Fuji	1979	Singlebeam	NGDC	unknown	5	336002
ANTAC8B	Fuji	1966	Singlebeam	NGDC	unknown SIMPSON	5	336003
DSDP25GC	Glomar Challenger	1972	Singlebeam	NGDC	F.S.W.,SCHLICH R. LUYENDYK B.,DAVIES	5	337001
DSDP26GC	Glomar Challenger	1972	Singlebeam	NGDC	T. HYDROGRAPHER OF THE NAVY	5	337002
19950320	Hampshire	1981	Singlebeam	NGDC	HYDROGRAPHER OF THE NAVY	5	338001
19950321	Hampshire	1981	Singlebeam	NGDC	HYDROGRAPHER OF THE NAVY	5	338002
19950322	Hampshire	1981	Singlebeam	NGDC	HYDROGRAPHER OF THE NAVY	5	338003
19930071	Herald	1981	Singlebeam	NGDC	HYDROGRAPHER OF THE NAVY	5	339001
19930067	Hydra	1985	Singlebeam	NGDC	HYDROGRAPHER OF THE NAVY	5	340001
19930068	Hydra	1985	Singlebeam	NGDC	HYDROGRAPHER OF THE NAVY	5	340002
19930070	Hydra	1983	Singlebeam	NGDC	HYDROGRAPHER OF THE NAVY	5	340003
19920152	Invincible	1992	Singlebeam	NGDC	THE NAVY	5	341001
19910034	Jeanne D'Arc	1985	Singlebeam	NGDC	NOT KNOWN John Casey, Jay Miller	5	342001
ODP179JR	JOIDES Resolution	1998	Singlebeam	NGDC	H. Dick, J. Natland, J. Miller	5	343001
ODP176JR	JOIDES Resolution	1997	Singlebeam	NGDC		5	343002
MF103_1	Marion Dufresne	1996	Singlebeam	NGDC	POISSON	5	344001
MD34	Marion Dufresne	1983	Singlebeam	NGDC	PHILIPPE PATRIAT	5	344002
MMDU0	Marion Dufresne	1973	Singlebeam	NGDC	unknown	5	344003
MN766	Meiring Naude	1976	Singlebeam	NGDC	E S W SIMPSON HYDROGRAPHER OF THE NAVY	5	345001
19920001	N. Colombo	1991	Singlebeam	NGDC		5	346001
OB3B	Ob	1957	Singlebeam	NGDC	unknown	5	347001
OB2B	Ob	1956	Singlebeam	NGDC	unknown	5	347002
OWEN63	Owen	1963	Singlebeam	NGDC	B.C. BROWNS	5	348001
OWEN62	Owen	1962	Singlebeam	NGDC	T.F. GASKELL HYDROGRAPHER OF THE NAVY	5	348002
19920021	Scylla	1991	Singlebeam	NGDC		5	349001
ANTAC25	Shirase	1984	Singlebeam	NGDC	unknown	5	350001
ANTAC26	Shirase	1984	Singlebeam	NGDC	unknown	5	350002

Name	Vessel	Year	Type	Source	Reference (PI)	Weight	ID
TBD396	Thomas B. Davie	1979	Singlebeam	NGDC	NO INFN	5	351001
TD277	Thomas B. Davie	1972	Singlebeam	NGDC	E S W SIMPSON	5	351002
TD267	Thomas B. Davie	1971	Singlebeam	NGDC	E S W SIMPSON	5	351003
TN056	Thomas G. Thompson	1996	Singlebeam	NGDC	Neil Bogue	5	352001
TN058	Thomas G. Thompson	1996	Singlebeam	NGDC	George White	5	352002
UM68	Umitaka Maru	1968	Singlebeam	NGDC	unknown	5	353001
V3620	Vema	1981	Singlebeam	NGDC	unknown	5	354001
V3617	Vema	1980	Singlebeam	NGDC	COCHRAN, JAMES P. RABINOWITZ, M. COFFIN	5	354002
V3618	Vema	1980	Singlebeam	NGDC	A.D. FALVEY, G.I. PRASAD, M. COFFIN	5	354003
V3619	Vema	1980	Singlebeam	NGDC	M. COFFIN	5	354004
V3411	Vema	1978	Singlebeam	NGDC	BRIAN TUCHOIKE	5	354005
V3501	Vema	1978	Singlebeam	NGDC	JAMES R. COCHRAN	5	354006
V3410	Vema	1977	Singlebeam	NGDC	ERIC SIMPSON	5	354007
V2904	Vema	1972	Singlebeam	NGDC	H. KAHLE	5	354008
V2905	Vema	1972	Singlebeam	NGDC	DR. JOHN LADD	5	354009
V2411	Vema	1967	Singlebeam	NGDC	THOMAS AITKEN	5	354010
V2205	Vema	1966	Singlebeam	NGDC	DR. M. EWING	5	354011
V2010	Vema	1964	Singlebeam	NGDC	M. LANGSETH	5	354012
V1910	Vema	1963	Singlebeam	NGDC	M. LANGSETH	5	354013
V1911	Vema	1963	Singlebeam	NGDC	M. LANGSETH	5	354014
V1810	Vema	1962	Singlebeam	NGDC	M. TALWANI	5	354015
V1605	Vema	1959	Singlebeam	NGDC	Charles Fray	5	354016
V1411	Vema	1958	Singlebeam	NGDC	Dr. John Nafe	5	354017
VIT31B	Vityaz	1959	Singlebeam	NGDC	unknown	5	355001
WI343920	Wilkes	1979	Singlebeam	NGDC	unknown NAVOCEANO CODE	5	356001
WI343728	Wilkes	1977	Singlebeam	NGDC	7220 NAVOCEANO CODE	5	356002
WI343731	Wilkes	1977	Singlebeam	NGDC	7220	5	356003

Table S1. Source Identifier (SID) expedition list providing meta-data for the source data of the swIOBC. Meta-data in the list can be linked to SID map (S1).