

## A MOLECULAR PHYLOGENETIC FRAMEWORK FOR THE ERGalATAXINAE (NEOGASTROPODA: MURICIDAE)

MARTINE CLAREMONT<sup>1,2</sup>, ROLAND HOUART<sup>3</sup>, SUZANNE T. WILLIAMS<sup>1</sup>  
AND DAVID G. REID<sup>1</sup>

<sup>1</sup>Department of Zoology, Natural History Museum, London SW7 5BD, UK;

<sup>2</sup>Division of Biology, Imperial College London, Silwood Park Campus, Ascot SL5 7PY, UK; and

<sup>3</sup>Institut Royal des Sciences Naturelles de Belgique, Rue Vautier, Brussels, Belgium

Correspondence: M. Claremont; e-mail: m.claremont@nhm.ac.uk

(Received 2 April 2012; accepted 28 September 2012)

### ABSTRACT

The validity of the muricid subfamily Erganataxinae has recently been confirmed with molecular data, but its composition and the relationships among its constituent genera remain unclear. In order to investigate this, we use four genes (28S rRNA, 12S rRNA, 16S rRNA and cytochrome *c* oxidase subunit I) to construct a Bayesian phylogeny of 52 ergalataxine species in 18 genera, representing *c.* 40% of the currently accepted species and 86% of the genera. This is the most complete phylogeny of this taxonomically confusing subfamily yet produced. Our results indicate the polyphyly of many traditional genera, including *Morula*, *Pascula* and *Orania*. In order to improve the correspondence between classification and phylogeny, we restrict the definition of *Morula*, resurrect *Tenguella* and elevate *Oppomorus* to full genus, but describe no new genera. Several species in this analysis could not be identified and may be new, but we do not describe them. Further molecular and morphological analyses, in the context of this framework, should help to resolve the remaining ambiguities in the classification of this subfamily. The oldest fossil member of the Erganataxinae known to us is of Early Oligocene age.

### INTRODUCTION

The Muricidae are a large, taxonomically complex family of neogastropods. Many species in this family are well known for their charismatic shells (*Murex*, *Chicoreus*), as predators (*Ocenebra*, *Urosalpinx*) of commercially important oysters, as an ancient source of purple dye (*Bolinus*, *Plicopurpura*) or as food items (*Concholepas*, *Murex*). However, until recently, the phylogeny of the family was poorly known; subfamilies have been erected based largely on superficial shell and radular resemblances rather than on rigorous phylogenetic analyses. One such subfamily is the Erganataxinae, the diagnosis of which was based on somewhat vague characters of the shell, operculum, radula and egg capsule (Kuroda & Habe, 1971). It has been criticised as “the least well-defined [subfamily] in the entire family Muricidae” (Vokes, 1996a, 27). Ever since its introduction, the taxonomy of the group and its relationship to another muricid subfamily, the Rapaninae (=Thaidinae of authors), has been controversial. Some workers contended that there was little morphological support for the separation of the Rapaninae and Erganataxinae (Tan, 1995, 2000). Others described new ergalataxine genera and transferred existing genera to the subfamily (e.g. Houart, 1995a, b, 1997; Vokes, 1996a, b). Recent molecular phylogenetic analyses have tested

these opposing views, establishing the monophyly of the Erganataxinae and supporting its recognition as a subfamily (Claremont, Reid & Williams, 2008; Barco *et al.*, 2010; Claremont *et al.*, in press).

Like the rest of the Muricidae, ergalataxines are carnivorous, preying upon a wide variety of organisms including corals, polychaetes, barnacles and other molluscs (e.g. Taylor, 1980; Tan, 1995; Ishida, 2004; Claremont, Reid & Williams, 2011a). Erganataxines are mainly found in the tropical Indo-West Pacific and occupy a wide range of habitats, with some species common in the high intertidal, while others live more than 500 m deep (Kuroda & Habe, 1971; Houart, 1995b; Tan, 1995). The subfamily was initially established for only three genera (*Ergalatax*, *Bedequina* and *Cytharomorula*), but many traditionally ‘thaidid’ genera have been transferred to it subsequently (e.g. *Morula*, *Spimidrupa*, *Cronia*, *Drupella*; Tröndlé & Houart, 1992; Kool, 1993; Vokes, 1996a; Tan, 2000; Vermeij & Carlson, 2000; Houart, 2004; Claremont *et al.*, 2011a). New ergalataxine genera have also been described, based on characters of the shell and radula (e.g. *Habromorula*; Houart, 1995a).

Characters of the shell, internal anatomy and radula have also been used to suggest affinities between various genera (e.g. Fujioka, 1985; Houart, 1995a, b, 2004), but cases of plasticity,

polymorphism and of parallel and convergent evolution within the Eregalataxinae have made phylogenetic reconstruction based on morphology difficult. For example, radular morphology has been shown to vary within species according to sex, growth rate and season (Fujioka, 1985; Kool, 1993; Tan, 1995). Such is the prevalence of homoplasy in morphological character transformations that early cladistic analyses did not even find support for the monophyly of the Eregalataxinae (Kool, 1993; Vermeij & Carlson, 2000). Although molecular studies have confirmed its monophyly (see above), so far they have suffered from limited taxonomic sampling. A comprehensive molecular analysis of this important subfamily remains to be done.

Previous molecular phylogenetic analyses of the Muricidae have included only a few representatives of the Eregalataxinae (6 species in Claremont *et al.*, 2008; 10 species in Barco *et al.*, 2010; 6 species in Claremont *et al.*, in press). Here, we aim to provide a more comprehensive phylogenetic framework of the Eregalataxinae for further taxonomic, ecological and phylogeographic work; to test monophyly of nominal genera currently defined by morphological characters and to provide a new phylogenetic classification. To do this, we construct a molecular phylogeny of 52 ergalataxine species using one nuclear and three mitochondrial genes.

## MATERIAL AND METHODS

### *Taxon sampling and identification*

A total of 109 ergalataxine specimens were obtained for molecular analysis (Supplementary Material, Table S1). These were identified morphologically by the authors (R.H., D.G.R. and M.C.) as belonging to 52 species in 18 genera, representing 40% of the *c.* 129 accepted species in the subfamily and all but three of the 21 currently accepted genera (Houart, 1986, 1987, 1991, 1995a, b, 1996a, b, 1997, 1998, 2000, 2002, 2004, 2008; Tröndlé & Houart, 1992; Tan, 1995; Vokes, 1996b; Vermeij & Carlson, 2000; Table 1). We have sequenced the type species of 15 genera (Houart, 1995b; Vermeij & Carlson, 2000; Tables 1, Supplementary Material Table S1). Based on morphology, nine additional genera have been included in the Eregalataxinae by some authors (Tröndlé & Houart, 1992; Houart, 1995b, 2004; Vokes, 1996b). Of these nine genera, one is unavailable; one is a possible synonym of another ergalataxine genus; three have been removed from the subfamily on the basis of their morphology (Ponder, 1972; Radwin & D'Attilio, 1976; R. Houart, 2010, unpubl.); and one has been removed based on molecular analyses (Barco *et al.*, 2010; see Supplementary Material, Table S2). The three ergalataxine genera not included in our analysis (*Daphnellopsis*, *Lindapterys*, *Uttleya*) are poorly known and lack clear morphological similarities to other Eregalataxinae, so have been placed in the Eregalataxinae only tentatively (R. Houart, unpubl.; Supplementary Material, Table S2). Representative species of these genera should be included in future molecular analyses.

We used 66 previously published ergalataxine sequences (Supplementary Material, Table S1; Claremont *et al.*, 2008, 2011a; Barco *et al.*, 2010). Outgroup species were selected from the Rapaninae, as this is the sister subfamily to the Eregalataxinae in some analyses (Claremont *et al.*, 2008; but see Barco *et al.*, 2010). All rapanine outgroup sequences have previously been published (Claremont *et al.*, 2008; Barco *et al.*, 2010). New sequences were submitted to GenBank (Supplementary Material, Table S1). Location of voucher material is noted in Supplementary Material, Table S1. Generic assignments in the following text and figures are valid, based on the conclusions of this study (summarized in Table 1).

Where generic assignments remain unclear (because of polyphyly and/or lack of type species in the analysis), we have followed those of Houart (e.g. Houart, 1986, 1987, 1991, 1995a, b, 1996a, b, 1997, 1998, 2000, 2002, 2004, 2008), except for '*Thais castanea*' (where we have followed Steyn & Lussi, 1998). Single quotation marks have been used to indicate these cases of uncertainty.

### *DNA sequencing and alignment*

For all samples, three mitochondrial genes [cytochrome *c* oxidase subunit I (COI), 16S rRNA and 12S rRNA] and one nuclear gene (28S rRNA), known to be informative for phylogenetic analysis in the Muricidae (Claremont *et al.*, 2008; Barco *et al.*, 2010), were sequenced, following the protocols of Claremont *et al.* (2011b). Polymerase chain reactions (PCRs) amplified *c.* 1500 bp of 28S, 750 bp of 16S, 700 bp of COI and 650 bp of 12S. Primers and PCR conditions for all genes were as described by Barco *et al.* (2010), except for some forward fragments of 16S that were obtained using a new internal primer, 16S-Int56F (5'-AAC RGC CGC GGT ACT CTG-3') and some COI sequences that were obtained using primers COIF and COI-MUR (Claremont *et al.*, 2011b). We were unable to amplify all genes for all specimens. Thus, the 12S alignment consisted of 115 sequences, the 16S alignment of 106 sequences, the 28S alignment of 95 sequences and the COI alignment of 78 sequences (Supplementary Material, Table S1).

Sequences were assembled and edited with Sequencher (v. 4.8; GeneCodes Corporation, Ann Arbor, MI). Clear heterozygous peaks in both the forward and reverse sequence of 28S were coded as polymorphisms. After removal of primer regions, 28S sequences were 1497 bp and 12S sequences were 573 bp. COI sequences obtained with COIF/COI-MUR were 703 bp; those sequences obtained using universal primers (Folmer *et al.*, 1994) were 658 bp. Sequences of 16S obtained with CGLeuR (Hayashi, 2005) and 16S-Int56F (this paper) were 705 bp, while those obtained with CGLeuR (Hayashi, 2005) and 16SA (Palumbi *et al.*, 1991) were 825 bp.

Ribosomal (28S, 16S and 12S) sequences were aligned using the Q-INS-i method of MAFFT (Multiple Alignment using Fast Fourier Transform; v. 6.847b; Katoh & Toh, 2008). Based on preliminary analyses, we did not expect long gaps in our alignments, so the offset value was set to 0.1. The resulting alignments were adjusted by eye in MacClade (v. 4.06 OSX; Maddison & Maddison, 2003). Gblocks (v. 0.91 beta; Castresana, 2000) was then used to remove poorly aligned sites (minimum number of sequences for a conserved position: 70%; minimum number of sequences for a flanking position: 90%; maximum number of contiguous non-conserved positions: 3; minimum length of a block: 5; all gap positions allowed). Elimination of ambiguous regions reduced the 28S alignment by 5% to 1432 bp, the 12S alignment by 10% to 518 bp and the 16S alignment by 14% to 620 bp. COI sequences were aligned by eye in MacClade. There were 91 phylogenetically informative base pairs in 28S, 232 bp in 12S, 173 bp in 16S and 272 bp in COI.

For each gene partition, 24 different models of nucleotide substitution were tested with MrModelTest (v. 2.2; Nylander, 2004). Additionally, we tested a site-specific model of evolution of COI using PAUP\* (v. 4.0b10; Swofford, 2002). The model chosen by both the hierarchical ratio test and Akaike's Information Criterion in MrModelTest was GTR + I + G for 28S, 16S and 12S, and HKY + I + G for COI. Comparison of log-likelihood values indicated that HKY + I + G was a significantly better fit to the data than a model that allowed site-specific rate variation across codon partitions.

**Table 1.** Status of genera of Ergalataxinae included in this study.

Genus	Type species	First placed in Ergalataxinae by	Type species analysed herein	Validity
<i>Bedequina</i> Habe, 1946	<i>Trophon birileffi</i> Lishke, 1871	Kuroda & Habe, 1971	Yes	Valid; could include <i>Spinidrupa</i>
<i>Cronia</i> H. & A. Adams, 1853	<i>Purpura amygdala</i> Kiener, 1835	Tröndlé & Houart, 1992	Yes	Valid; could include <i>Maculotriton</i> and <i>Ergalatax</i>
<i>Cytharomorula</i> Kuroda, 1953	<i>Cytharomorula vexillum</i> Kuroda, 1953	Kuroda & Habe, 1971	Yes	Uncertain; not monophyletic in any analysis
<i>Drupella</i> Thiele, 1925	<i>Purpura elata</i> Blainville, 1832 [= <i>Drupa cornus</i> Röding, 1798]	Claremont <i>et al.</i> , 2011a	Yes	Valid
<i>Ergalatax</i> Iredale, 1931	<i>Ergalatax recurrens</i> Iredale, 1931 [= <i>Murex pauper</i> Watson, 1883]	Kuroda & Habe, 1971	No (although included <i>E. contracta</i> is possible synonym; Houart, 2008)	Uncertain; not monophyletic in any analysis. In clade with <i>Cronia</i> and <i>Maculotriton</i> ; potential synonym of <i>Cronia</i>
<i>Habromorula</i> Houart, 1995	<i>Purpura biconica</i> Blainville, 1832	Houart, 2004	Yes	Not a valid genus; within <i>Morula</i> clade; monophyly of <i>Habromorula</i> not strongly contradicted, so potentially valid subgenus
<i>Lataxiens</i> Jousseume, 1883	<i>Lataxiens lataxiens</i> Jousseume, 1883 [= <i>Trophon fimbriata</i> Hinds, 1844]	Houart, 1995b	Yes	Valid; composition unclear due to uncertainty surrounding <i>Orania</i>
<i>Maculotriton</i> Dall, 1904	<i>Triton bracteata</i> Hinds, 1844 [= <i>Buccinum seriale</i> Deshayes, 1834]	Tröndlé & Houart, 1992	Yes	Valid; potential synonym of <i>Cronia</i>
<i>Morula</i> Schumacher, 1817	<i>Morula papillosa</i> Schumacher, 1917 [= <i>Drupa uva</i> Röding, 1798]	Houart, 2004	Yes	Valid; definition restricted (cf. Houart, 2002, 2004)
<i>Muricodrupa</i> Iredale, 1918	<i>Purpura fenestrata</i> Blainville, 1832	Tröndlé & Houart, 1992	Yes	Valid; definition restricted ( <i>M. fiscella</i> excluded)
<i>Oppomorus</i> Iredale, 1937	<i>Morula nodulifera</i> Menke, 1829	Houart, 2004	Yes	Valid genus (subgenus of Houart, 2004)
<i>Orania</i> Pallary, 1900	<i>Pseudomurex spadae</i> Libassi, 1859 [= <i>Murex fusulus</i> Brocchi, 1814]	Houart, 1995b	No	Uncertain; type species not included; species previously assigned to <i>Orania</i> form clades with members of <i>Lataxiens</i> , <i>Usilla</i> , <i>Cytharomorula</i> and <i>Pascula</i> .
<i>Pascula</i> Dall, 1908	<i>Trophon citricus</i> Dall, 1908	Tröndlé & Houart, 1992	No	Uncertain; type species not included; paraphyletic as currently defined
<i>Phrygiomurex</i> Dall, 1904	<i>Triton sculptilis</i> Reeve, 1844	Tröndlé & Houart, 1992	Yes	Valid
<i>Spinidrupa</i> Habe & Kosuge, 1966	<i>Murex euracantha</i> A. Adams, 1851	Houart, 1995a	Yes	Uncertain; some species in clade with <i>Bedequina</i> , which has priority
<i>Tenguella</i> Arakawa, 1965	<i>Purpura granulata</i> Duclos, 1832	This study	Yes	Valid; synonymized with <i>Morula</i> by Fujioka (1985), but shown here to be distinct
<i>Trachypollia</i> Woodring, 1928	<i>Trachypollia sclera</i> Woodring, 1928	Vokes, 1996a	No	Probably valid, although sampling limited and type species not included
<i>Usilla</i> H. Adams, 1861	<i>Vexilla nigrofusca</i> Pease, 1860 [= <i>Vexilla fusconigra</i> Pease, 1860 = <i>Purpura avenacea</i> Lesson, 1842]	Vokes, 1996b	Yes	Valid, but type in clade with type of <i>Lataxiens</i> and some <i>Orania</i> ; retained as genus because morphologically distinct (following Vokes, 1996b; Houart & Tröndlé, 2008)

See Supplementary material, Table S2 for status of unsampled, excluded and doubtful genera. Valid genera are those confirmed as monophyletic, with type species included. Potential synonymy and other uncertainties should be resolved by further sampling and analysis.

### Phylogenetic analysis (single gene)

All single-gene alignments were analysed using Bayesian inference and the Markov Chain Monte-Carlo Method (MCMC; MrBayes v. 3.1; Huelsenbeck & Ronquist, 2001). Model

parameters for each gene were set according to the model selected by Mr Model Test and were free to vary among gene partitions. There were two independent runs of the MCMC analysis, each using four chains. Convergence between the independent MCMC runs was tested by examining the average

deviations of split frequencies and the potential scale-reduction factor (PSRF), as well as the traces in Tracer (v. 1.5; Drummond & Rambaut, 2007). The MCMC analysis was run for five million generations until the MCMC runs converged. In all cases, we used a sample frequency of 1,000 and a burn-in of 1,501; other parameters were default values. Clades with posterior probability (PP) >95% were considered well supported, while PP of 90–95% was taken as marginal support. Branches in the consensus tree supported by PP <50% were collapsed. All PSRF values for MrBayes analyses were 1.00, while average deviations of split frequencies converged on zero, indicating that all trees had reached stationarity.

#### Construction and analysis of concatenated alignments

Inspection of individual gene trees did not reveal any well-supported clades (PP > 95%) in conflict. Conflict among strongly supported clades (PP > 95%) can be interpreted as evidence of genetic incongruence and divergent phylogenetic histories, while conflict among weakly supported clades (PP < 50%) may be due to stochastic error (Wiens, 1998; Reeder, 2003; Williams & Ozawa, 2006). We therefore created concatenated datasets. As more sequences were available for 28S and 12S than for 16S and COI, we constructed two datasets: a four-gene dataset (28S + 12S + 16S + COI) and a two-gene dataset (28S + 12S). The two-gene dataset consisted of 94 sequences, while the four-gene alignment consisted of 59 sequences.

Bayesian analysis of the two-gene and four-gene datasets was performed exactly as above; MCMC analyses of both datasets were run until stationarity was reached at nine million generations.

## RESULTS

In general, the single-gene analyses were less well resolved than two-gene and four-gene analyses (Figs 1–3), with 28S being particularly poorly resolved at the suprageneric level (Supplementary Material, Fig. S1). We found that the two-gene and the four-gene analyses were most useful for determining the relationships among genera (Figs 1 and 2) while, because it had the most available sequences, the 12S analysis was most useful for determining relationships among species (Fig. 3). For this reason, we will not discuss the single-gene trees other than 12S in detail; none of the remaining single-gene trees have any well-supported branches in conflict with the trees discussed (Supplementary Material Fig. S1).

#### Suprageneric relationships

Three well-supported suprageneric clades were found (Figs 1 and 2; Clades A–C; PP = 100%), with a single lineage (*Trachypollia lugubris*) in an ambiguous position (Figs 1–3). Relationships among the major clades were not well supported in most trees, although B and C formed a clade in the all-gene tree (Fig. 1; PP = 98%).

Within clade A, we recovered species that have been previously assigned to the genera *Morula sensu stricto*, *Muricodrupa* and *Tenguella* (Figs 1 and 2; PP = 100%). Included in clade B were species that have been previously assigned to *Morula s. s.*, *Muricodrupa*, *Morula (Habromorula)* and *Cytharomorula* (Figs 1–3; PP = 100%). Within clade C fell species that have previously been assigned to *Orania*, *Cronia s. s.*, *Cronia (Usilla)*, *Lataxienna*, *Drupella*, *Ergalatax*, *Maculotriton*, *Bedevena*, *Spinidrupa*, *Morula s. s.*, *Morula (Oppomorus)*, *Pascuala*, *Cytharomorula* and *Phrygiomurex* (Figs 1–3; PP > 95%).

#### Genus-level clades

*Tenguella granulata*, *T. ceylonica*, *T. musiva* and *T. marginalba* formed a well-supported subclade U within major clade A, together with an apparently undescribed species (*Tenguella* n. sp.; Figs 1–3A; PP = 100%). *Muricodrupa fenestrata* and '*Morula*' *anaxares* formed a poorly supported clade in the two-gene and four-gene analyses (Fig. 1, PP = 93%; Fig. 2, PP = 85%). A sister relationship between '*Morula*' *nodulosa* and all other species in major clade A was well supported (Figs 1–3A; PP > 98%).

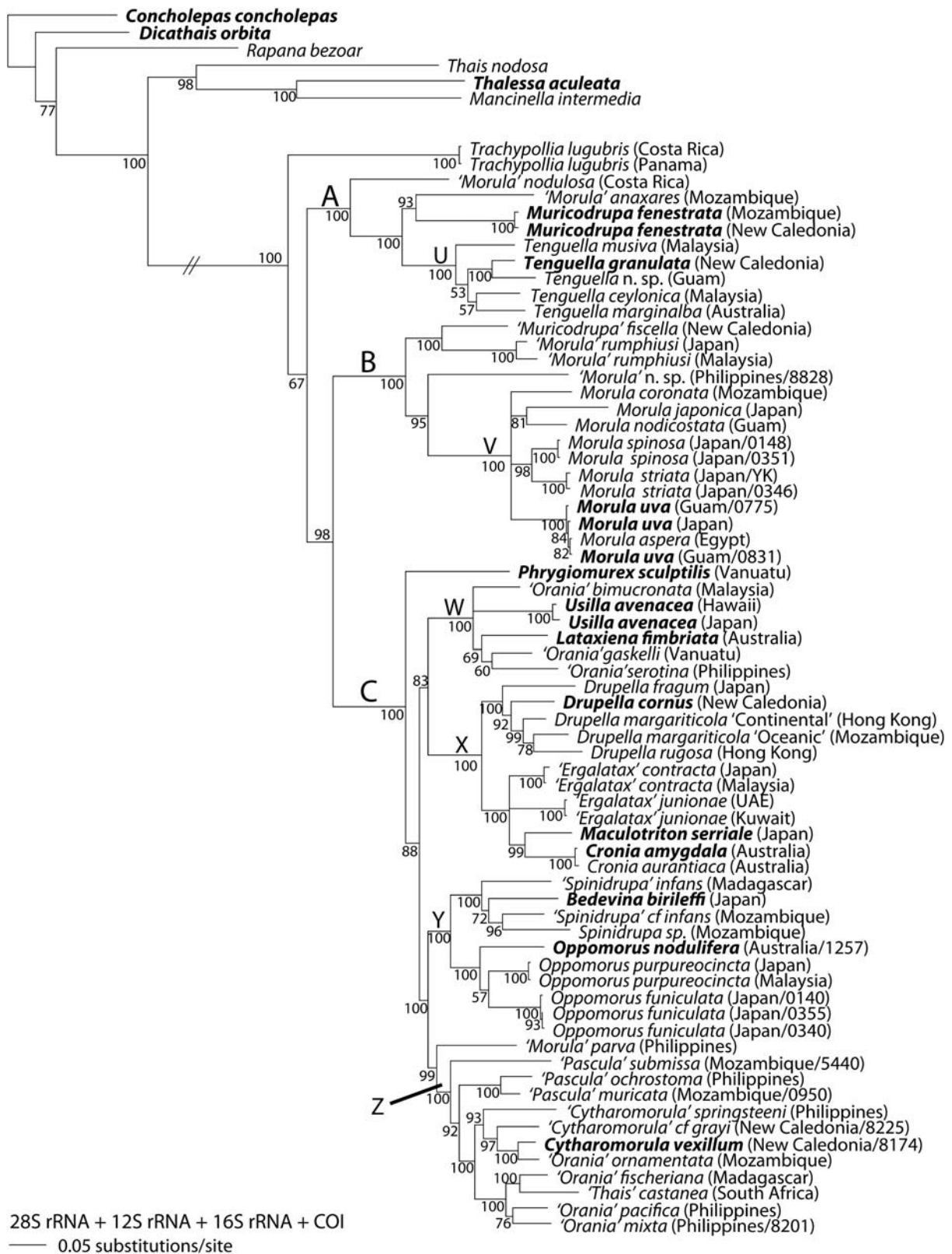
Within major clade Ba well-supported subclade V consisted of *Morulawa* and 10 other *Morula* species (*M. aspera*, *M. benedicta*, *M. biconica*, *M. chrysostoma*, *M. coronata*, *M. japonica*, *M. nodicostata*, *M. spinosa*, *M. striata* and *M. zebrina*; Figs 1–3A; PP > 99%). '*Morula*' *rumphiusi* and '*Morula*' *fiscella* formed a well-supported clade in all analyses (Figs 1–3A; PP = 100%). An unidentified species ('*Morula*' n. sp.) fell within major clade B, but its position was not resolved (Figs 1–3A).

Four well-supported subclades W–Z were observed within major clade C (Figs 1, 2 and 3B; PP > 95%; but Z unsupported in 12S analysis Fig. 3B). *Usilla avenacea*, *Lataxienna fimbriata*, '*Orania*' *bimucronata*, '*O.*' *gaskelli* and '*O.*' *serotina* formed subclade W (Figs 1, 2 and 3B; PP = 100%). Within subclade X *Drupella cornus*, *D. eburnea*, *D. fragum*, *D. rugosa*, *D. margariticola* 'Continental' and *D. margariticola* 'Oceanic' formed a well-supported clade in the two-gene and four-gene analyses (Figs 1 and 2; PP > 95%). A sister relationship between this clade and one consisting of *Ergalatax contracta*, '*E.*' *junionae*, *Cronia amygdala*, *C. aurantiaca* and *Maculotriton serriale* was well supported in the four-gene analysis (Fig. 1; PP = 100%). Within subclade Y, a clade of *Oppomorus nodulifera*, *O. purpureocincta* and *O. funiculata* was well supported in the four-gene analysis (Fig. 1; PP = 100%). Also within subclade Y, a clade consisting of '*Spinidrupa*' *infans*, '*S.*' cf. *infans*, '*Spinidrupa*' sp. and *Bedevena birileffi* was well supported in both the two-gene and four-gene analyses (Figs 1 and 2; PP > 98%), but the position of *Spinidrupa euracantha* was not resolved within subclade Y (Fig. 3B). Within subclade Z, a clade consisting of *Cytharomorula vexillum*, '*C.*' cf. *grayi*, '*C.*' *springsteeni*, '*Orania*' *ornamentata*, '*O.*' *mixta*, '*O.*' *pacifica*, '*O.*' *fischeriana*, '*O.*' cf. *rosea* and '*Thais*' *castanea* was well supported in the two-gene and four-gene analyses (Figs 1 and 2; PP = 100%). '*Pascuala*' *ochrostoma* and '*P.*' *muricata* formed a clade (Figs 1 and 2; PP = 100%), as did '*P.*' *darrosensis* and '*P.*' *submissa* (Figs 2 and 3B; PP = 100%). '*Morula*' *parva* was sister to all the other members of subclade Z in the two-gene and four-gene analyses (Figs 1 and 2; PP > 95%). The position of '*Cytharomorula*' *paucimaculata* in subclade Z was unresolved (Fig. 3B). The positions of *Phrygiomurex sculptilis* and '*Morula*' *echinata* (only 12S sequence available for the latter) within major clade C were not resolved (Figs 1, 2 and 3B).

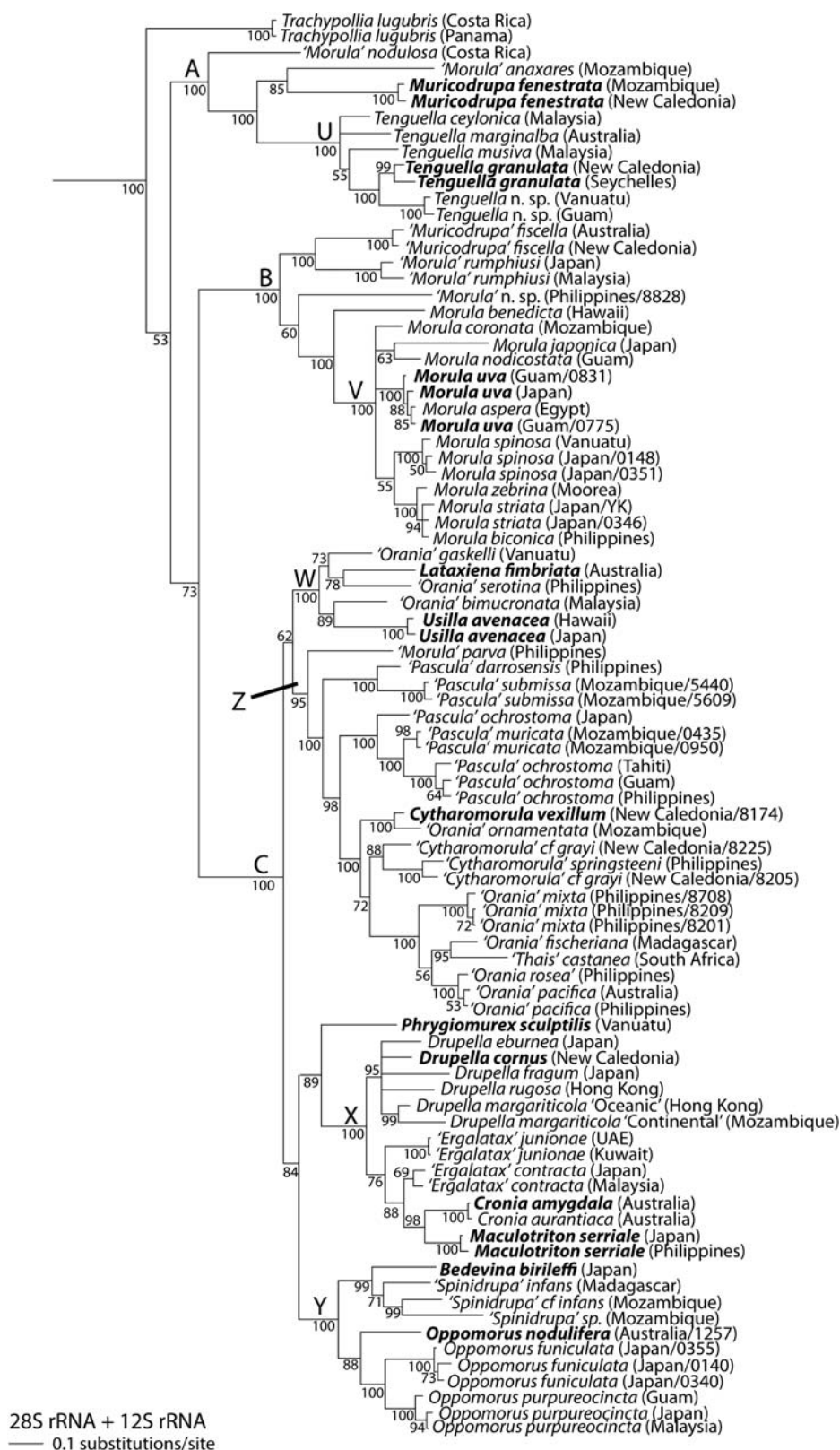
#### Species-level relationships

This study was not designed to test species boundaries or to resolve relationships between species comprehensively. Nevertheless, some results suggest the need for further investigation. We found evidence indicating two possible new species (*Tenguella* n. sp. and '*Morula*' n. sp.; Figs 1–3; and Supplementary material, Fig. S1). Small genetic distances are suggestive of possible synonymy of species; for example, there was <1% divergence among COI sequences for the pair *Morula wa* and *M. aspera*, and similarly for the pair *Cronia amygdala* and *C. aurantiaca*. In two cases, morphospecies were not monophyletic ('*Cytharomorula*' cf. *grayi* and '*Pascuala ochrostoma*'; Figs 2 and 3B).

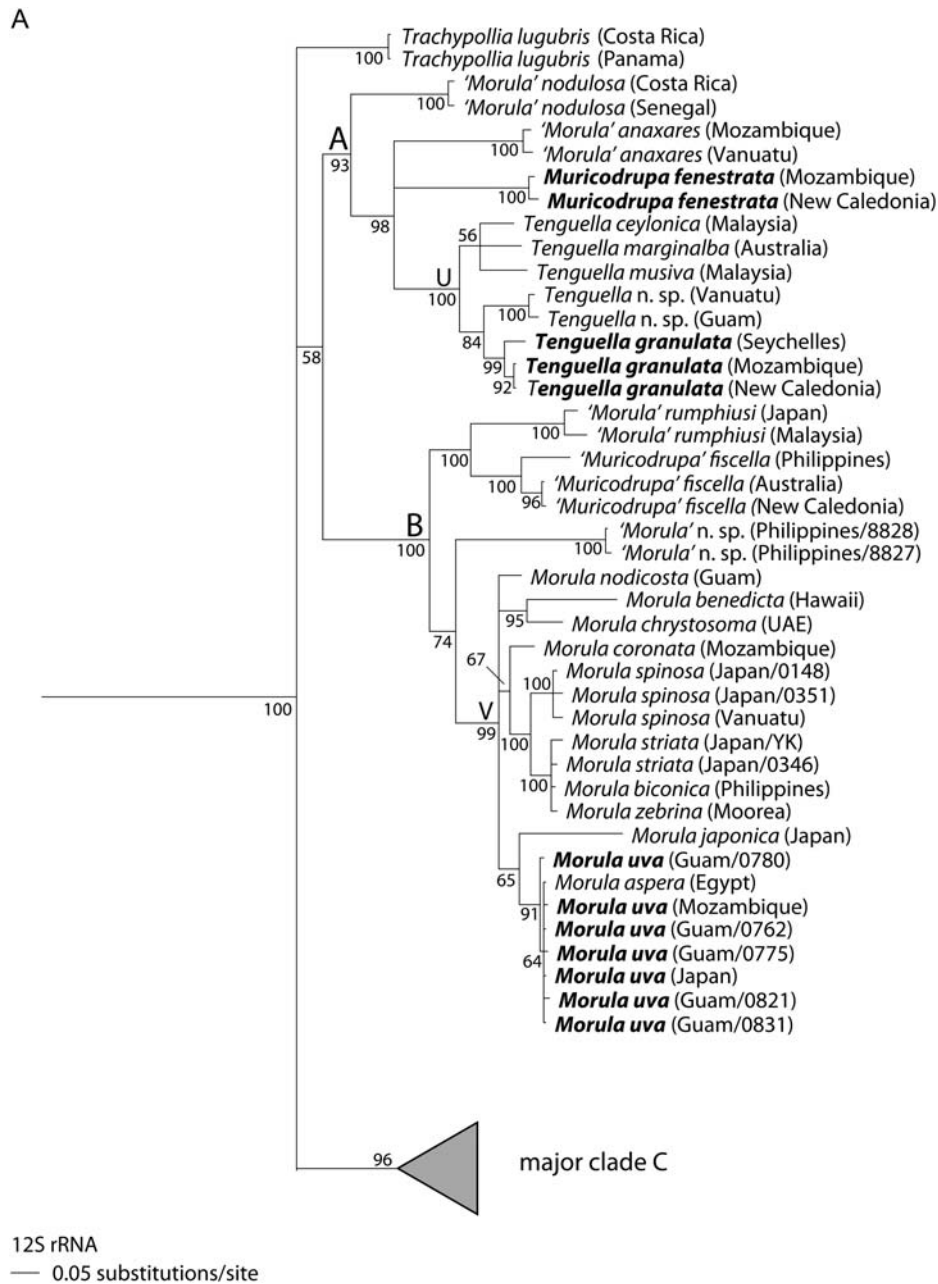




**Figure 1.** Bayesian phylogeny of the Ergalataxinae and rapanine outgroups, based on the four-gene analysis of 28S rRNA, 12S rRNA, 16S rRNA and cytochrome *c* oxidase subunit I (COI) sequences. Posterior probabilities  $\geq 50$  are shown at the nodes. Generic assignments are based on our revised classification (Table 1); uncertain assignments are indicated by single quotation marks. Type species of valid genera are indicated in bold. Locality is shown in parentheses after species name; when more than one sample of a species is from a given location, the last four digits of the voucher numbers are given (see Supplementary material Table S1). Major clades are indicated by letters A–C and subclades by U–Z.



**Figure 2.** Bayesian phylogeny of the Ergalataxinae, based on the two-gene analysis of 28S and 12S rRNA. Rapanine outgroups not shown. Conventions as in Figure 1.



**Figure 3.** Bayesian phylogeny of the Ergalataxinae, based on single-gene analysis of 12S rRNA. Rapanine outgroups not shown. Conventions as in Figure 1. **A.** Major clades A and B, with subclades U and V. **B.** Major clade C, with subclades W and Z. Note that subclade Z includes ‘*Morula parva*’ in Figures 1 and 2.

## DISCUSSION

### *Phylogenetic relationships and classification of the ergalataxine genera*

Our results indicate polyphyly in nearly all the ergalataxine genera, as hitherto defined by morphological characters. For example, species previously assigned to *Morula* are found in each of the three major clades, while species of *Orania* are found in each subclade within major clade C. Here, we use a molecular dataset to construct a new phylogenetic classification that reflects evolutionary relationships rather than superficial similarities in shell morphology. A phylogenetic classification requires that genera are clades that contain their designated type species, but some decisions about naming and ranking

remain subjective. When making such decisions, we have preserved current usage (based on morphological definitions of genera) where possible. We emphasize that our study provides only an initial framework which should be refined and tested by further molecular and morphological analyses and consequently we name no new genera at this stage.

The genus *Trachypollia* is here represented by only one of its four currently recognized members, all of which occur in the eastern Pacific and Atlantic Oceans (EPA) (Figs 1–3, Table 1; Vokes, 1996a; Houart, 1997). Further species, including the type, should be investigated with molecular techniques, not only to test the monophyly of the genus, but also to resolve its position within the Ergalataxinae. If the included species *T. lugubris* is representative of the genus, it is clear that the



B

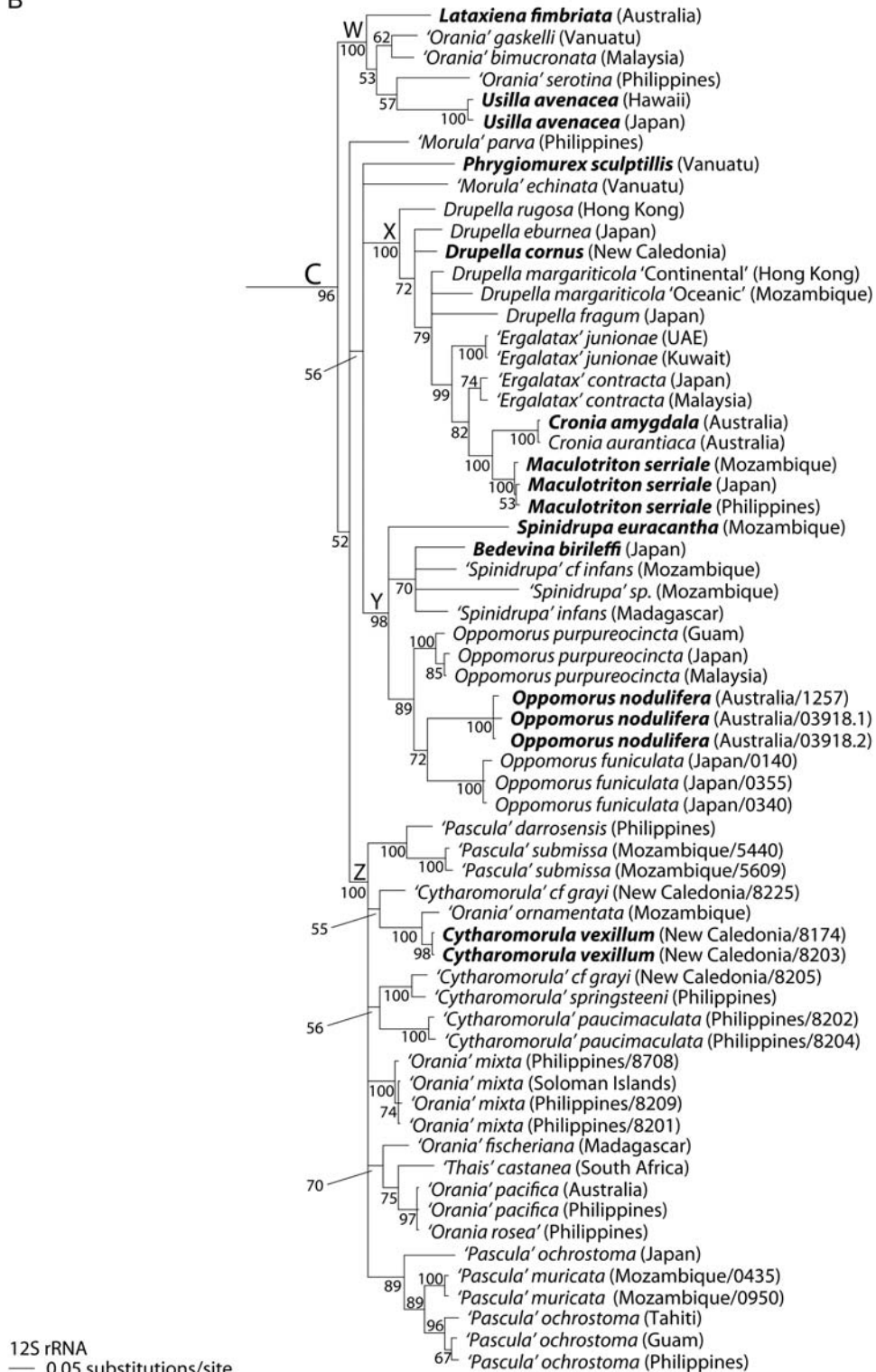


Figure 3. Continued

Atlantic '*Morula*' *nodulosa* must be excluded from the genus, in agreement with Vokes (1996a).

Within major clade A, we propose that three or four genera can be recognized: *Tenguella*, *Muricodrupa* and one or two undescribed genera. Subclade U (Figs 1–3A) contains the type species of *Tenguella*, *T. granulata*, and we therefore assign to

*Tenguella* all species in subclade U (Figs 1–3A). *Tenguella* has previously been synonymized with *Morula* (Fujioka, 1985) and its species have not previously been recognized as a morphologically distinctive group. Included in this group is an unidentified species (*Tenguella* n. sp. in Figs 1–3A); this has been illustrated as '*Azumamorula* sp.' (Dharma, 2005) and as '*Morula*



*mutica*' (Wilson, 1994). The shell shows some similarities to *M. mutica*, which is the type species of *Azumamorula*, and it is therefore possible that this genus may prove to be a synonym of *Tenguella* (Table 1). The other species in clade A are morphologically dissimilar to species of *Tenguella*. We recommend that *Muricodrupa* be retained for its type species, *M. fenestrata*. In the all-gene analysis (Fig. 1), '*Morula*' *anaxares* forms a marginally significant clade with *M. fenestrata*, which is not contradicted in other analyses. Unworn shells of both species show similar sculpture and, if future studies confirm their sister relationship, '*Morula*' *anaxares* may be transferred to *Muricodrupa*. A new genus is required for '*Morula*' *nodulosa*, the sole representative of clade A in the Atlantic, well supported as sister to the remaining Indo-West Pacific (IWP) members (Figs 1–3A). The pattern of one or more EPA lineages sister to a more diverse IWP clade is common in tropical gastropod groups (e.g. Williams & Reid, 2004; Claremont *et al.*, in press).

Eleven species that are commonly assigned to *Morula* form a monophyletic group within major clade B. Since this includes *M. uva*, the type species of *Morula*, we propose that the generic name should be restricted to this subclade (Figs 1–3A: subclade V). This clade also contains *M. biconica*, the type species of *Habromorula*, but species previously assigned to this group [as a subgenus of *Morula*: *M. (H.) biconica*, *M. (H.) coronata*, *M. (H.) japonica*, *M. (H.) spinosa*, *M. (H.) striata*; Houart, 2004] do not form a clade in any analysis (Figs 1–3A). However, monophyly of this morphologically distinctive group is not strongly contradicted, so that further sampling and analysis could yet support *Habromorula* as a monophyletic subgenus of *Morula*. Because they are morphologically dissimilar to species of *Morula s. s.*, other species in clade B ('*Morula*' *rumphiusi* and '*Morula*' *fiscella*) should be assigned to a new genus. The placement of an unidentified species ('*Morula*' n. sp.) is not certain.

Major clade C is the largest and most morphologically disparate of the ergalataxine subgroups and our sampling includes the type species of 10 described genera. Most of these are poorly defined morphologically and some (*Phrygiomurex*, *Usilla*, *Maculotriton*, *Bedequina*) may be monotypic. The affinities of *Phrygiomurex sculptilis* and '*Morula*' *echinata* are not resolved.

Species in subclade W (Figs 1–3B) are morphologically heterogeneous, including both the smooth-shelled *Usilla* and foliose *Lataxiens*, together with some *Orania* species. The genus *Orania* is strongly polyphyletic in our analyses, with members in subclades W and Z (Figs 1–3B). Since the type species of *Orania* (*O. fusulus* from the Mediterranean; Table 1) was not included, it is impossible to determine to which of the three to five clades of '*Orania*' the name should be applied. Clearly a revision of the genus is necessary. Meanwhile, in view of the morphological disparity in this group, we suggest that *Orania*, *Usilla* and *Lataxiens* should be retained according to their accustomed usage.

Within subclade X (Figs 1–3B) the genus-level classification of *Drupella* has been investigated in detail elsewhere (Claremont *et al.*, 2011a). The genus is well supported (Figs 1 and 2), consisting of *D. cornus*, *D. fragum*, *D. eburnea*, *D. rugosa* and two cryptic species of *D. margariticola sensu lato* (*D. margariticola* 'Oceanic' and *D. margariticola* 'Continental'). Other species in subclade X form a well-supported clade in the all-gene analysis (Fig. 1), including the type species of *Cronia* and *Maculotriton*. The type species of *Ergalatax*, *E. pauper*, was not sampled, but the included *E. contracta* is probably close to it and has been considered synonymous (Houart, 2008). Of these three generic names, *Cronia* has priority (Table 1). Although *Ergalatax* is not monophyletic in any analysis (Figs 1–3B), our sampling of this genus was limited. Therefore, we conservatively suggest that all three genera are retained until relationships among them can be more thoroughly investigated with increased species-level sampling.

Subclade Y (Figs 1–3B) also contains morphologically diverse species. In the all-gene analysis (Fig. 1), the type species of *Oppomorus*, *O. nodulifera*, forms a well-supported clade with *O. funiculata* and *O. purpureocincta* and we therefore propose that *Oppomorus* should be accorded full generic rank (hitherto a subgenus of *Morula*, e.g. Houart, 2004). Of the remaining taxa in subclade Y, three species previously assigned to *Spinidrupa* form a clade ('*S.*' *infans*, '*S.*' cf. *infans* and '*S.*' sp.), but their relationship with the type species, *S. euracantha*, is unresolved in the only analysis in which the latter was included (Fig. 3B). Furthermore, in the all-gene analysis the '*Spinidrupa*' clade also includes *Bedequina birileffi*, the type species of *Bedequina*, which has priority. Pending the inclusion of additional species, we conservatively recommend the retention of both *Spinidrupa* and *Bedequina*.

Subclade Z (Figs 1–3B) contains species of *Pascula*, *Orania* and *Cytharomorula*, but includes the type species of only the last of these. Based on the included species, all three genera, as currently defined, are polyphyletic. It may be that the entire clade should be assigned to one genus. Of these three generic names, *Orania* has priority (Table 1), but its members also appear in clade W and the type species was not included. Pending a more complete analysis, including the relevant type species, we have conservatively retained all species in the genera to which they have been previously assigned. Also included here is the enigmatic South African species '*Thais*' *castanea*; clearly, this is not a member of the rapanine genus *Thais*, but its appropriate generic assignment remains to be determined. A temporary placement in *Orania* is suggested. In the two-gene and four-gene analyses (Figs 1 and 2), '*Morula*' *parva* is sister to all other members of subclade Z, suggesting that a new genus may be required for this species.

#### Fossil record and age of the Ergalataxinae

Owing to similarity and convergence of shell form among ergalataxine and rapaninemuricids and lack of unambiguous synapomorphies for many clades (Vermeij & Carlson, 2000), unequivocal identification of fossils can be problematic. Vermeij & Carlson (2000) gave the earliest occurrences of several ergalataxine genera as Late Miocene, while Landau, Houart & Da Silva (2007) reported that the group appeared in the Atlantic in the Early Miocene. The oldest certain ergalataxine known to us is a specimen of '*Taurasia*' *sacyi* Cossmann & Peyrot, 1923 from the Early Oligocene (Gaas, Espibos, France; Rupelian stage, 28.4–33.9 Ma; Collection of R. Houart). This fossil resembles Recent species of *Pascula*, *Ergalatax* and *Cytharomorula*, implying a minimum age for major clade C. This, however, is insufficient for a reliable time calibration of our phylogeny. Palaeontological evidence suggests a Cretaceous origin for the Muricidae as a whole (Vermeij, 1996). Some recent molecular studies have attempted to estimate ages of ergalataxine clades, giving figures of 5 Ma for *Drupella* (Claremont *et al.*, 2011a) and 82 Ma for the separation of the Ergalataxinae and Rapaninae (Claremont *et al.*, in press). Detailed study of ergalataxine fossils is required before these estimates can be refined.

#### CONCLUSIONS

Although this framework represents the most complete phylogeny of the Ergalataxinae yet constructed, much work remains to be done to achieve a robust phylogenetic classification of this taxonomically difficult subfamily. We have clarified the classification of '*Morula*' *s. l.*, defining as distinct clades the genera *Morula s. s.*, *Tenguella* and *Oppomorus*, and have confirmed the validity of *Muricodrupa*, *Phrygiomurex* and *Drupella*. The definition and validity of several traditional genera, including

*Orania*, *Pascula*, *Cytharomorula*, *Cronia*, *Ergalatax*, *Maculotriton*, *Usilla*, *Lataxiens*, *Spinidrupa* and *Bedevena* remain to be confirmed (see summary in Table 1). At least three new genera (for ‘*Morula nodulosa*’; for ‘*M. fiscella*’ and ‘*M. rumphiusi*’; and for ‘*M. parva*’) appear to be required. Several living genera that have been included in Ergalataxinae by some authors were not available for inclusion in our analyses and their placement should be tested by molecular analysis (*Azumamorula*, *Daphnellopsis*, *Lindapterys*, *Utleya*; Supplementary material: Table S2).

## SUPPLEMENTARY MATERIAL

Supplementary material is available at *Journal of Molluscan Studies* online.

## ACKNOWLEDGEMENTS

We are very grateful for the assistance and loans provided by the staff of museums and research institutions, especially P. Bouchet, V. Héros, B. Buge and N. Puillandre of Muséum Nationale d’Histoire Naturelle, Paris (MNHN); G. Paulay, J. Slapcinsky and M. Bemis of the Florida Museum of Natural History; E. Naranjo of the Universidad Nacional Autónoma de México; J.E. Michel-Morfin and V. Landa-Jaime of Universidad de Guadalajara; Y. Camacho of the University of Costa Rica; S. Slack-Smith and C. Whisson of the Western Australian Museum, Perth; M. Oliverio and A. Barco of ‘La Sapienza’ University of Rome; A. Kerr and B. Smith of the University of Guam Marine Laboratory; G. Williams of the Swire Marine Lab, Hong Kong; and I. Loch and A. Miller of the Australian Museum, Sydney. We would also like to thank many others who provided specimens or who assisted us in the field including L. Alsayegh, C. Bennett, C. Bird, C. Carlson, T. Haga, T. Hamada, G. Herbert, Y. Ito, R. Jones, Y. Kano, P. Kuklinski, T. Nakano, B. Ng, S. Nielson, N. Razalli, K.S. Tan, S.H. Tan, J.D. True, R.C. Willan, and Z. Yasin. The MNHN material used in this study was collected during the following expeditions: PANGLAO 2004 Marine Biodiversity Project [a joint project between University of San Carlos, Cebu City (USC; co-PI Danilo Largo) and MNHN (co-PI Philippe Bouchet), funded by the Total Foundation and the French Ministry of Foreign Affairs]; the AURORA 2007 cruise [M/V DA-BFAR associated with the National Museum of the Philippines (NMP, co-PI Marivene Manuel), MNHN (co-PI Philippe Bouchet) and BFAR, funded through a grant from the Lounsbery Foundation]; the MNHN-IRD-PNI Santo 2006 expedition (funded by grants from, among others, the Total Foundation and the Stavros Niarchos Foundation); EBISCO, NORFOLK 2 and CONCALIS cruises [R/V *Alis* deployed from Nouméa by the Institut de Recherche pour le Développement (IRD)]. M.C. was supported by a studentship from the Natural History Museum, London and by an Imperial College Deputy Rector’s studentship. We thank the Acting Editor Ellen Strong, Marco Oliverio and one anonymous reviewer for helpful comments on a previous version of this manuscript.

## REFERENCES

- BARCO, A., CLAREMONT, M., REID, D.G., HOUART, R., BOUCHET, P., WILLIAMS, S.T., CRUAUD, C., COULOUX, A. & OLIVERIO, M. 2010. A molecular phylogenetic framework for the Muricidae, a diverse family of carnivorous gastropods. *Molecular Phylogenetics and Evolution*, **56**: 1025–1039.
- CASTRESANA, J. 2000. Selection of conserved blocks from multiple alignments for their use in phylogenetic analysis. *Molecular Biology and Evolution*, **17**: 540–552.
- CLAREMONT, M., REID, D.G. & WILLIAMS, S.T. 2008. A molecular phylogeny of the Rapaninae and Ergalataxinae (Neogastropoda: Muricidae). *Journal of Molluscan Studies*, **74**: 215–221.
- CLAREMONT, M., REID, D.G. & WILLIAMS, S.T. 2011a. Evolution of corallivory in the gastropod genus *Drupella*. *Coral Reefs*, **30**: 977–990.
- CLAREMONT, M., VERMEIJ, G.J., WILLIAMS, S.T. & REID, D.G. (in press). Global phylogeny and new classification of the Rapaninae (Gastropoda: Muricidae), dominant molluscan predators in the tropical rocky intertidal. *Molecular Phylogenetics and Evolution*.
- CLAREMONT, M., WILLIAMS, S.T., BARRACLOUGH, T.G. & REID, D.G. 2011b. The geographic scale of speciation in a marine snail with high dispersal potential. *Journal of Biogeography*, **38**: 1016–1032.
- DHARMA, B. 2005. *Recent and fossil Indonesian shells*. Conch Books, Hackenheim.
- DRUMMOND, A.J. & RAMBAUT, A. 2007. BEAST: Bayesian evolutionary analysis by sampling trees. *BMC Evolutionary Biology*, **7**: 214.
- FOLMER, O., BLACK, M., HOEH, W., LUTZ, R. & VRIJENHOEK, R. 1994. DNA primers for amplification of mitochondrial cytochrome *c* oxidase subunit I from diverse metazoan invertebrates. *Molecular Marine Biology and Biotechnology*, **3**: 294–299.
- FUJIOKA, Y. 1985. Systematic evaluation of radular characters in Thaidinae (Gastropoda: Muricidae). *Journal of Science of the Hiroshima University, Series B, Division 1*, **31**: 235–287.
- HAYASHI, S. 2005. The molecular phylogeny of the Buccinidae (Caenogastropoda: Neogastropoda) as inferred from the complete mitochondrial 16S rRNA gene sequences of selected representatives. *Molluscan Research*, **25**: 85–98.
- HOUART, R. 1986. Mollusca Gastropoda: noteworthy Muricidae from the Pacific Ocean, with description of seven new species. *Résultats des Campagnes Musorstom*, vol. 2. *Mémoires du Muséum National d’Histoire Naturelle, Paris (A)*, **133**: 427–455.
- HOUART, R. 1987. Description of four new species of Muricidae (Mollusca: Gastropoda) from New Caledonia. *Venus*, **46**: 202–210.
- HOUART, R. 1991. The southeastern Brazilian Muricidae collected by EV Marion-Dufresne in 1987, with the description of three new species. *Nautilus*, **105**: 26–37.
- HOUART, R. 1995a. Some notes on the genus *Spinidrupa* Habe and Kosuge, 1966 (Muricidae: Ergalataxinae), with the description of *Habromorula* gen. nov. (Muricidae: Rapaninae) and four new species from the Indo-West Pacific. *Iberus*, **12**: 21–31.
- HOUART, R. 1995b. The Ergalataxinae (Gastropoda, Muricidae) from the New Caledonia region with some comments on the subfamily and the description of thirteen new species from the Indo-West Pacific. *Bulletin du Muséum National d’Histoire Naturelle. Section A*, **16**: 245–297.
- HOUART, R. 1996a. On the identity of *Morula martensi* Dall, 1923 and description of a new species of *Ergalatax* from the Red Sea (Gastropoda: Muricidae: Ergalataxinae). *Nautilus*, **110**: 12–16.
- HOUART, R. 1996b. Results of the Rumphius biohistorical expedition to Ambon (1990): Part 5. Mollusca, Gastropoda, Muricidae. *Zoologische Mededelingen*, **70**: 377–397.
- HOUART, R. 1997. Les Muricidae d’Afrique occidentale: the West African Muricidae: II. Ocenebrinae, Ergalataxinae, Tripterotyphinae, Typhinae, Trophoninae & Rapaninae. *Apex*, **12**: 49–91.
- HOUART, R. 1998. Description of eight new species of Muricidae (Gastropoda). *Apex*, **13**: 95–109.
- HOUART, R. 2000. *Morula rogersi* n. sp., a new Muricidae (Rapaninae) from Guam. *Novapex*, **1**: 101–104.
- HOUART, R. 2002. Comments on a group of small *Morula* s. s. species (Gastropoda: Muricidae: Rapaninae) from the Indo-West Pacific with the description of two new species. *Novapex*, **3**: 97–118.
- HOUART, R. 2004. Review of the recent species of *Morula* (*Oppomorus*), *M. (Azumamorula)* and *M. (Habromorula)* (Gastropoda: Muricidae: Ergalataxinae). *Novapex*, **5**: 91–130.

- HOUART, R. 2008. Rehabilitation of *Ergalatax martensi* (Schepman, 1892) (Gastropoda: Muricidae), senior synonym of *Ergalatax obscura* Houart, 1996, and description of *Ergalatax junionae*, new name for *Morula martensi* Dall, 1923. *Nautilus*, **122**: 99–106.
- HOUART, R. & TRÖNDLÉ, J. 2008. Update of Muricidae (excluding Coralliophilinae) from French Polynesia with description of ten new species. *Novapex*, **9**: 53–93.
- HUELSENBECK, J.P. & RONQUIST, F. 2001. MRBAYES: Bayesian inference of phylogenetic trees. *Bioinformatics*, **17**: 754–755.
- ISHIDA, S. 2004. Initial predation and parasitism by muricid whelks demonstrated by the correspondence between drilled holes and their apparent enveloper. *Journal of Experimental Marine Biology and Ecology*, **305**: 233–245.
- KATOH, K. & TOH, H. 2008. Recent developments in the MAFFT multiple sequence alignment program. *Briefings in Bioinformatics*, **9**: 286–298.
- KOOL, S.P. 1993. Phylogenetic analysis of the Rapaninae (Neogastropoda: Muricidae). *Malacologia*, **35**: 155–259.
- KURODA, T. & HABE, T. 1971. Subfamily Ergalataxinae (nov.). In: *The sea shells of Sagami Bay* (T. Kuroda, T. Habe & K. Oyama, eds), pp. 489 (English part). Maruzen Company, Tokyo.
- LANDAU, B., HOUART, R. & DA SILVA, C.M. 2007. The early Pliocene Gastropoda (Mollusca) of Estepona, Southern Spain. Part 7: Muricidae. *Palaeontos*, **11**: 1–87.
- MADDISON, D.R. & MADDISON, W.P. 2003. *MacClade. Version 4.06 OSX*. Sinauer Associates, Sunderland, MA.
- NYLANDER, J.A.A. 2004. *Mr Modeltest v. 2*. Program distributed by the author. Evolutionary Biology Centre, Uppsala University.
- PALUMBI, S.R., MARTIN, A., ROMANO, S., MCMILLAN, W.O., STICE, L. & GRABOWSKI, G. 1991. The simple fool's guide to PCR, Version 2.0. Department of Zoology and Kewalo Marine Laboratory, University of Hawaii, Honolulu, HA.
- PONDER, W.F. 1972. Notes on some Australian genera and species of the family Muricidae (Neogastropoda). *Journal of the Malacological Society of Australia*, **2**: 215–248.
- RADWIN, G.E. & D'ATTILIO, A. 1976. *Murex shells of the world: an illustrated guide to the Muricidae*. Stanford University Press, Stanford, CA.
- REEDER, T.W. 2003. A phylogeny of the Australian *Sphenomorphus* group (Scincidae: Squamata) and the phylogenetic placement of the crocodile skinks (*Tribolonotus*): Bayesian approaches to assessing congruence and obtaining confidence in maximum likelihood inferred relationships. *Molecular Phylogenetics and Evolution*, **27**: 384–397.
- STEYN, D.G. & LUSSI, M. 1998. *Marine shells of South Africa*. Ekogilde, Hartebeespoort, South Africa.
- SWOFFORD, D.L. 2002. *PAUP\*, Phylogenetic Analysis Using Parsimony (\*and Other Methods), Version 4*. Sinauer Associates, Sunderland, MA.
- TAN, K.S. 1995. *Taxonomy of the Thais and Morula (Mollusca: Gastropoda: Muricidae) in Singapore and vicinity*. PhD thesis. National University of Singapore.
- TAN, K.S. 2000. Species checklist of Muricidae (Mollusca: Gastropoda) in the South China Sea. *Raffles Bulletin of Zoology, Supplement 8*: 495–512.
- TAYLOR, J.D. 1980. Diets and habitats of shallow water predatory gastropods around Tolo Channel, Hong Kong. In: *Proceedings of the First International Workshop on the Malacofauna of Hong Kong and Southern China, Hong Kong, 1977*. (B. Morton, ed.), pp. 163–165. Hong Kong University Press, Hong Kong.
- TRÖNDLÉ, J. & HOUART, R. 1992. Les Muricidae de Polynésie française. *Apex*, **7**: 67–149.
- VERMEIJ, G.J., 1996. Marine biological diversity: muricid gastropods as a case study. In: *Evolutionary Paleobiology* (D. Jablonski, D.H. Erwin & J.H. Lipps, eds), pp. 355–375. University of Chicago Press, Chicago, IL.
- VERMEIJ, G.J. & CARLSON, S.J. 2000. The muricid gastropod subfamily Rapaninae: phylogeny and ecological history. *Paleobiology*, **26**: 19–46.
- VOKES, E.H. 1996a. Cenozoic Muricidae of the Western Atlantic region: part XI—the subfamily Ergalataxinae. *Tulane Studies in Geology and Paleontology*, **29**: 27–44.
- VOKES, E.H. 1996b. One last look at the Muricidae. *American Conchologist*, **24**: 4–6.
- WIENS, J.J. 1998. Combining data sets with different phylogenetic histories. *Systematic Biology*, **47**: 568–581.
- WILLIAMS, S.T. & OZAWA, T. 2006. Molecular phylogeny suggests polyphyly of both the turban shells (family Turbinidae) and the superfamily Trochoidea (Mollusca, Vetigastropoda). *Molecular Phylogenetics and Evolution*, **39**: 33–55.
- WILLIAMS, S.T. & REID, D.G. 2004. Speciation and diversity on tropical rocky shores: a global phylogeny of snails of the genus *Echinolittorina*. *Evolution*, **58**: 2227–2251.
- WILSON, B. 1994. *Australian marine shells. Prosobranch gastropods. Part I*. Odyssey Publishing, Kallaroo, WA.