

***P. australis* 10-044**



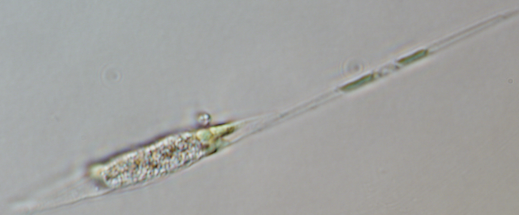
20  $\mu$ m

***P. australis* 10-045**



20  $\mu$ m

***P. cf. plurisecta* 12-150**



20  $\mu$ m

***P. fraudulenta* 13-374**



20  $\mu$ m

***P. pungens* 14-236**



20  $\mu$ m

***M. cf. nummuloides* Melo1para**



10  $\mu$ m

**Fig.S5|Sequenced single cell isolates.** Pictures show the single cell (or colony) sequenced to obtain the genetic marker indicated by the name of the host diatom and PCR code on the top left side. Table 1, summarizing the details for each isolate, is reported in the main text.