

Spatial scales of marine conservation management for breeding seabirds

Oppel Steffen ^{1,*}, Bolton Mark ¹, Carneiro Ana P. B. ², Dias Maria P. ², Green Jonathan A. ³, Masello Juan F. ⁴, Phillips Richard A. ¹⁸, Owen Ellie ¹, Quillfeldt Petra ⁴, Beard Annalea ⁵, Bertrand Sophie ^{6,7}, Blackburn Jez ⁸, Boersma P. Dee ⁹, Borges Alder ¹⁰, Broderick Annette C. ¹¹, Catry Paulo ¹², Cleasby Ian ¹, Clingham Elizabeth ⁵, Creuwels Jeroen ¹³, Crofts Sarah ¹⁴, Cuthbert Richard J. ¹, Dallmeijer Hanneke ¹⁵, Davies Delia ¹⁶, Davies Rachel ¹⁷, Dilley Ben J. ¹⁶, Dinis Herculano Andrade ²¹, Dossa Justine ², Dunn Michael J. ¹⁸, Efe Marcio A. ¹⁹, Fayet Annette L. ²⁰, Figueiredo Leila ¹⁹, Frederico Adelcides Pereira ¹⁰, Gjerdrum Carina ²², Godley Brendan J. ¹¹, Granadeiro Jose Pedro ²⁵, Guilford Tim ²⁰, Hamer Keith C. ²⁶, Hazin Carolina ², Hedd April ²⁷, Henry Leeann ⁵, Hernandez-Montero Marcos ²⁸, Hinke Jefferson ²⁹, Kokubun Nobuo ³⁰, Leat Eliza ³¹, Tranquilla Laura Mcfarlane ^{1,5}, Metzger Benjamin ³², Militao Teresa ^{23,24}, Montrond Gilson ¹⁰, Mullie Wim ¹⁵, Padget Oliver ²⁰, Pearmain Elizabeth J. ², Pollet Ingrid L. ³³, Putz Klemens ³⁴, Quintana Flavio, Ratcliffe Norman ¹⁸, Ronconi Robert A. ²², Ryan Peter G. ¹⁶, Saldanha Sarah ^{23,24}, Shoji Akiko ²⁰, Sim Jolene ³¹, Small Cleo ¹, Soanes Louise ³, Takahashi Akinori ³⁰, Trathan Phil ¹⁸, Trivelpiece Wayne ²⁹, Veen Jan ¹⁵, Wakefield Ewan, Weber Nicola ^{11,31}, Weber Sam ^{11,31}, Zango Laura ^{23,24}, Daunt Francis, Ito Motohiro, Harris Michael P., Newell Mark A., Wanless Sarah, Gonzalez-Solis Jacob ^{23,24}, Croxall John ²

¹ Royal Soc Protect Birds, RSPB Ctr Conservat Sci, Sandy, Beds, England.

² BirdLife Int, David Attenborough Bldg, Pembroke St, Cambridge CB2 3QZ, England.

³ Univ Liverpool, Sch Environm Sci, Liverpool L69 3GP, Merseyside, England.

⁴ Justus Liebig Univ Giessen, Dept Anim Ecol & Systemat, Heinrich Buff Ring 26, D-35392 Giessen, Germany.

⁵ St Helena Govt, Marine Sect, Environm & Nat Resources Directorate, Jamestown, St Helena Islan, St Helena.

⁶ Univ Montpellier, Ctr Rech Halieut, CNRS, IRD, UMR Marbec, Ifremer, Ave Jean Monnet, F-34200 Sete, France.

⁷ Univ Fed Rural Pernambuco, Rua Dom Manuel de Medeiros S-N, BR-52171900 Recife, PE, Brazil.

⁸ British Trust Ornithol, Thetford IP24 2PU, Norfolk, England.

⁹ Univ Washington, Ctr Ecosyst Sentinels, 24 Kincaid Hall, Seattle, WA 98195 USA.

¹⁰ Achada Sao Filipe, Projecto Vito, Sao Filipe, Ilha Do Fogo, Cape Verde.

¹¹ Univ Exeter, Ctr Ecol & Conservat, Cornwall Campus, Penryn TR10 9EZ, Cornwall, England.

¹² ISPA Inst Univ, MARE Marine & Environm Sci Ctr, Lisbon, Portugal.

¹³ Nat Biodivers Ctr, POB 9517, NL-2300 RA Leiden, Netherlands.

¹⁴ Falklands Conservat, Stanley FIQQ 1ZZ, Falkland Island.

¹⁵ Veda Consultancy, Wieselseweg 110, NL-7345 CC Wenum Wiesel, Netherlands.

¹⁶ Univ Cape Town, DST NRF Ctr Excellence, FitzPatrick Inst African Ornithol, ZA-7701 Rondebosch, South Africa.

¹⁷ MARINElife, 1 Higher St, Bridport DT6 3JA, West Dorset, England.

¹⁸ British Antarctic Survey, Nat Environm Res Council, Madingley Rd, Cambridge CB3 0ET, England.

¹⁹ Bioecol & Conservat Neotrop Birds Lab ICBS UFAL, Ave Lourival Melo Mota S-N, BR-57072900 Maceio, AL, Brazil.

²⁰ Univ Oxford, Dept Zool, Oxford OX1 3PS, England.

²¹ Direcao Nacl Ambiente, Parque Nat Fogo, Cha Das Caldeiras, Ilha Do Fogo, Cape Verde.

- ²² Environm & Climate Change Canada, Canadian Wildlife Serv, Dartmouth, NS B2Y 2N6, Canada.
- ²³ Univ Barcelona, Inst Recerca Biodiversitat IRBio, E-08028 Barcelona, Spain.
- ²⁴ Univ Barcelona, Dept Biol Evolut Ecol & Ciències Ambientals BEECA, E-08028 Barcelona, Spain.
- ²⁵ Univ Lisbon, Fac Ciências, CESAM, P-1749016 Lisbon, Portugal.
- ²⁶ Univ Leeds, Fac Biol Sci, Irene Manton Bldg, Leeds LS2 9JT, W Yorkshire, England.
- ²⁷ Environm & Climate Change Canada, Sci & Technol Branch, Wildlife Res Div, Mt Pearl, NF A1N 4T3, Canada.
- ²⁸ Projeto Biodiversidade, Santa Maria, Cape Verde.
- ²⁹ NOAA, Antarctic Ecosyst Res Div, Southwest Fisheries Sci Ctr, Natl Marine Fisheries Serv, La Jolla, CA USA.
- ³⁰ Natl Inst Polar Res, Tachikawa, Tokyo 1908518, Japan.
- ³¹ Ascension Isl Govt, Conservat & Fisheries Dept, George Town, Ascension Islan.
- ³² BirdLife Malta, 57-28 Triq Abate Rigord, Taxbiex 1120, Xbx, Malta.
- ³³ Bird Studies Canada, 17 Waterfowl Lane, Sackville, NB E4L 1G6, Canada.
- ³⁴ Antarctic Res Trust, Oste Hamme Kanal 10, D-27432 Bremervorde, Germany.

* Corresponding author : Steffen Opiel, email address : steffen.oppel@rspb.org.uk

frada@ceh.ac.uk ; ito.motohiro@nipr.ac.jp ; mph@ceh.ac.uk; manew@ceh.ac.uk ; swanl@ceh.ac.uk

Abstract :

Knowing the spatial scales at which effective management can be implemented is fundamental for conservation planning. This is especially important for mobile species, which can be exposed to threats across large areas, but the space use requirements of different species can vary to an extent that might render some management approaches inefficient. Here the space use patterns of seabirds were examined to provide guidance on whether conservation management approaches should be tailored for taxonomic groups with different movement characteristics. Seabird tracking data were synthesised from 5419 adult breeding individuals of 52 species in ten families that were collected in the Atlantic Ocean basin between 1998 and 2017. Two key aspects of spatial distribution were quantified, namely how far seabirds ranged from their colony, and to what extent individuals from the same colony used the same areas at sea. There was evidence for substantial differences in patterns of space-use among the ten studied seabird families, indicating that several alternative conservation management approaches are needed. Several species exhibited large foraging ranges and little aggregation at sea, indicating that area-based conservation solutions would have to be extremely large to adequately protect such species. The results highlight that short-ranging and aggregating species such as cormorants, auks, some penguins, and gulls would benefit from conservation approaches at relatively small spatial scales during their breeding season. However, improved regulation of fisheries, bycatch, pollution and other threats over large spatial scales will be needed for wide-ranging and dispersed species such as albatrosses, petrels, storm petrels and frigatebirds.

Keywords : Foraging range, Marine protected area, Spatial aggregation, Telemetry, Tracking, Value of information

1. Introduction

Decision makers often have to select among different management actions that might benefit a given species, and management options can range from small-scale solutions that protect a local area from outside disturbance or destruction, to large-scale or global actions that regulate human activities which are considered detrimental. In the marine realm, the unambiguous delineation of important areas for the protection of biodiversity is complicated by the lack of obvious habitat boundaries [1-3], and in many cases the spatial scale of marine protected areas is inadequate to fully protect the species of interest [4, 5]. Selecting the most

appropriate conservation management option will therefore benefit from accurate knowledge about the spatial scale at which management is required to protect highly mobile species [6].

Seabirds are distributed across all of the world's oceans and adjacent coastlines and islands [7, 8]. They face multiple threats on land and at sea, and are more threatened than other groups of birds [9-11]. Because many seabirds feed on fish and are near the apex of the marine food chain, they are useful indicator species for the health of the marine environment and for marine spatial planning [12-14]. To protect seabirds at sea it is essential to understand their spatial distribution and potential exposure to anthropogenic threats. During the breeding season, seabirds are constrained to marine areas which they can reach from their nest while maintaining parental duties of incubating eggs or feeding chicks. The areas exploited during the breeding season are therefore important for the persistence of populations, and may be more feasible to manage than areas used during other life stages. However, some seabird species can travel thousands of kilometres even during the breeding season [e.g. 8, 15, 16], and the spatial scale of appropriate management may therefore vary.

Currently available approaches for seabird conservation at sea can be implemented across a range of spatial scales and within a variety of regulatory frameworks [5, 17]. Area-based management approaches such as marine protected areas can be based on a broad variety of management frameworks that range from complete protection from all extractive and destructive activities ('marine reserves') to multiple use areas that permit and regulate economic activity [18-20]. For seabirds, area-based measures range from the protection of breeding colonies at the very local scale, to marine foraging areas around colonies and further offshore where significant seabird concentrations occur [21-23]. At larger spatial scales, additional conservation management options exist for seabirds that are not based on the protection of a specific area [17]. For example, regulations that reduce or eliminate the incidental mortality (bycatch) of seabirds in industrial or artisanal fishing operations [11, 24, 25], or regulations that limit the extraction of food resources [26, 27], can be implemented across all spatial scales and may therefore mitigate key threats to widely dispersed species [28-30]. Deciding which of these policy instruments may be most appropriate for a given seabird species of conservation concern can be informed by a better understanding of the species' broad spatial distribution and aggregation patterns.

The distribution of seabird species was often inferred from observations at sea, until the development of small tracking devices in recent decades [31-33]. By 2017, more than 100

of the 360 species of seabirds had been equipped with tracking devices [34]; hence, sufficient seabird tracking data exist on the spatial scales of foraging to inform effective management at a broad taxonomic level [6, 35, 36]. To synthesize the existing information for management planning, two complementary aspects of seabird distribution patterns are particularly important, albeit not entirely independent: (1) the distance a species travels and the size of the marine area that birds of a given colony exploit; and (2) to what extent individuals of the same colony use the same areas at sea, which is referred to as 'spatial aggregation'. Even very mobile species can show high spatial aggregation at sea, and areas in which they congregate may be in national or international waters depending on the distance the birds travel from the colony [37, 38]. Here, seabird space-use with respect to these two aspects is quantified to indicate appropriate spatial scales for conservation management of breeding seabirds at the family level.

Existing tracking data from 52 species of ten different families collected in the Atlantic Ocean basin over the past two decades were used. These data were analysed with previously established methods [1, 39, 40] to quantify the broad space-use requirements and spatial aggregation patterns of adult seabirds during the breeding season, and variation among families was tested. This approach allowed an assessment of whether the patterns of taxonomically coherent groups of species are sufficiently consistent to provide guidance for the use of particular approaches to marine management.

2. Methods

2.1. Data collation and aggregation

Seabird tracking data were collated for adult birds during the breeding season, when individuals are most constrained in their space-use due to the need to return to the nesting site on land. This constraint to return to the nest will likely accentuate differences between families and therefore facilitate a greater contrast in the space-use across the taxonomic spectrum. While protecting juvenile, immature and adult life-stages outside the breeding season is equally important for the conservation of long-lived species [41, 42], the movement patterns of seabirds when they are not breeding may be more affected by their latitudinal distributions than by taxonomic differences [43, 44]. In addition, a broad taxonomic comparison of distribution patterns of juvenile, immature, and adult life stages outside the

breeding season is currently difficult due to the paucity of suitably high-resolution tracking data for these stages.

Seabird tracking data from the Atlantic Ocean basin were available from the BirdLife Seabird Tracking Database [34] or through institutional repositories or collaborators. The selection of data used for this analysis was opportunistic and taxonomically imbalanced because seabird tracking efforts have so far focused on species and families of larger body size. However, the data represent a broad taxonomic spectrum of seabird movements during the breeding season from a large geographical region and are therefore useful to inform spatial scales for management.

Only tracking data from Global Positioning System (GPS) loggers and Platform Terminal Transmitters (PTT) were used due to their high spatial accuracy, and only datasets with at least five individuals were included to minimise erroneous conclusions based on samples of insufficient size [1, 37, 40]. During the breeding season, adult seabirds can be constrained to forage within different distances from their nest depending on whether they are incubating eggs or feeding small or large chicks [16, 45-47]. All tracking data were therefore divided into two stages, distinguishing the incubation period from the chick-rearing period when adults regularly return to feed the chick and therefore may not travel as far. Tracking data were analysed separately for each combination of species, colony, and breeding stage, except for some species where the tracking period spanned different breeding stages that were not distinguished because of a lack of concurrent monitoring (classified as ‘unspecified breeding’, Table S1). Our analysis was based on 210 datasets of 52 species from ten seabird families (Tables 1 and S1).

2.2. Rationale for space-use quantification

The analysis to support the selection of appropriate spatial scales for conservation management was designed to quantify seabird space-use in terms of (1) the distance that birds travel from their colony and the extent of the overall area that was exploited, and (2) the spatial aggregation at sea and the size of areas where a significant proportion of the population concentrated.

Although tracking data were collated from a 20-year time period, and it is possible that seabirds may have shifted their distribution in response to environmental changes over that

time period [48, 49], the coarse metrics of space-use which are based on evolutionary differences among families are unlikely to have changed over two decades. Hence, the year in which data were collected was not considered in the analysis, and the analysis is based on the assumption that travel capabilities of the ten seabird families have not fundamentally changed between 1998 and 2017.

<<<< TABLE 1 here >>>>

Quantifying the travel distance and size of exploited area

First, unrealistic locations were removed based on a species-specific speed filter [50] and PTT data were linearly interpolated to a regular 1 hr interval to reduce differences between GPS and PTT data due to their different temporal sampling resolution [51]. Mean sampling schemes were one location every 17 ± 32 minutes (standard deviation, range 0.5 – 156) for GPS and one location every 65 ± 34 minutes (2.4 – 188) for PTT datasets. Tracking data were then divided into discrete foraging trips either manually or using species- and device-specific cut-off values for minimum distances and durations implemented with standard processing routines [1]. For each foraging trip the maximum distance from the colony (foraging range) and the total travel distance as the sum of all straight-line distances between all subsequent locations were calculated. The median (and range) of these trip characteristics are presented for each species, based on all foraging trips from all colonies and breeding stages, to provide a general overview of travel capabilities across seabird species [52-54]. These summaries were also calculated using just the first trip of any given individual to reduce pseudo-replication [55, 56], but this data reduction did not alter the broad taxonomic pattern (Table S2).

Because single-dimension trip characteristics do not capture the range of directionality across foraging trips from individuals in a colony, the area used by each species at each colony was also quantified. This area was calculated as the minimum convex polygon of 95% of all locations for each tracking dataset and is hereafter referred to as 'exploited area'. A minimum convex polygon was chosen to encompass less frequently used areas, and 95% of locations were selected to avoid identifying an excessively large area due to some

erratic trips or low-quality location estimates; this approach is deemed appropriate for similarly large-scale taxonomic comparisons [57, 58].

2.2.1. Quantifying the spatial aggregation and size of area with concentrated use

Foraging areas may range from widely dispersed to highly concentrated in a relatively restricted area. First, the ‘core area’ for each individual was calculated as the 50% kernel utilization distribution, and the extent of overlap between core areas of all individuals of a given species at a colony in a given breeding stage was then quantified. To identify the core area, the scale of the area-restricted search derived from first-passage time analysis was used as the smoothing factor in the kernel density estimator [1, 59, 60]. Because the core area size is dependent on the smoothing factor, and area-restricted search may be difficult to detect for some species or data resolutions [61], an alternative approach was also used in which the smoothing factor was scaled to the median foraging range of a colony. Results from both approaches were highly correlated and did not affect our conclusions (Table S3), and only results from the former approach are presented. The overlap in core areas of individuals was quantified using Bhattacharyya’s Affinity index (BA), a non-directional measure of home-range overlap that ranges between 0 (complete separation) and 1 (completely matching probability distributions), and is considered the most appropriate index for quantifying the similarity between utilisation distributions [39, 62]. Because the BA is calculated between pairs of individuals, the BA across all pairwise comparisons was averaged for a given dataset. Individuals for which <10 locations were available were excluded from the estimation of spatial aggregation.

In order to compare the size of the core areas of each population (hereafter ‘area of concentrated use’), the 50% kernel utilisation distribution of each individual was delineated, and areas where the 50% kernels of at least 20% of tracked individuals of that population overlapped were identified [1].

To provide a scale of reference for the marine area requirements of seabirds, the sizes of existing marine protected areas were downloaded from the World Database on Protected Areas (www.protectedplanet.net, accessed 15 Aug 2017), and filtered to include only marine and coastal protected areas.

2.3. Assessing representativeness of datasets with varying sample size

Sample size can affect quantitative metrics of space-use based on tracking data [40, 51, 63]. Because datasets ranged from 5 to 119 individuals per colony and breeding stage, the representativeness of each dataset was quantified to characterise the distribution at the level of the colony. Following the approach of Lascelles et al. [1], each dataset was iteratively sub-sampled to randomly select tracking data from 3 to $n-1$ individuals, where n is the number of individuals tracked in that dataset. During each iteration, the 50% kernel utilisation distribution was calculated from the randomly selected data, and the proportion of the un-sampled locations that fell within the 50% isopleth was assessed. If the proportion of un-sampled locations contained within the 50% isopleth of the randomly selected individuals (hereafter referred to as the ‘inclusion value’) was $\geq 50\%$, then the dataset could be considered representative for the colony because the un-sampled individuals were already properly represented by the sampled individuals [1]. For each simulated sample size of every dataset 30 iterations were performed and the mean inclusion value across the 30 iterations was calculated for each sample size. A non-linear least-squares regression was then fitted to inclusion values to estimate the asymptote of each dataset based on the 30 iterations for each simulated sample size.

The representativeness of each dataset is reported as the proportion of the estimated asymptote that the mean inclusion value of a dataset achieved at the highest sample size. If this representativeness was $>70\%$, a dataset was adequate to describe the space-use of the population [1, 40]. If the non-linear regression could not identify an asymptote due to a singular gradient (i.e. the area expansion had not levelled off with increasing sample size), the mean inclusion value for the largest sample size of that dataset was used. The level of representativeness was then tested for a positive correlation with the number of individuals that had been tracked by calculating the Pearson correlation coefficient. The proportion of datasets for each family where the tracking data were considered not representative for the spatial distribution of a given colony is presented (Table S4).

2.4. Statistical analysis

To examine whether there was evidence for variation in space-use patterns at a higher taxonomic level [64, 65], the effect of seabird family on maximum travel distance from the colony, spatial aggregation (BA), the size of an area of concentrated use, and the size of the exploited area was tested. Generalised linear mixed models that included colony size and the

stage of the breeding cycle as fixed effects were used. These two factors affect the space-use patterns of seabirds [66-68], but the analysis did not aim to investigate the relative importance of these factors and no inference was drawn from those parameters. The sampling rate of the tracking device was also included as a fixed effect because it can affect the extent and shape of home-range areas [51]. In addition, variation at the species and colony level was accounted for by including these two variables as random intercepts to avoid pseudoreplication [69]. Because some datasets had small sample sizes, each dataset was weighted based on the level of representativeness that was attained in the sensitivity analysis to reduce the influence of small and possibly unrepresentative datasets on the overall conclusions.

The data collation of all individual foraging trips was used to test the effect of seabird family on maximum travel distance from the colony. The effect of seabird family on spatial aggregation, the size of an area of concentrated use, and the size of the exploited area was tested at a population level because the latter three measures were calculated for each unique combination of species, colony, and breeding stage.

For each of these four response variables, two models were fitted that differed only by the inclusion of seabird family as a fixed factor in one of the pair of models, while all other fixed and random factors were identical. A likelihood-ratio test was used to infer whether seabird family explained a significant amount of variation in space-use variables that was not already accounted for by other fixed or random effects [70]. All analytical steps were conducted in R 3.4.2 [71], and code to replicate the analyses is provided at <https://github.com/steffenoppel/seabirds>.

3. Results

Seabird tracking data from 52 species across ten families were collected between 1998 and 2017 in 210 unique combinations of species, colony, and breeding stage (Table S1). The data contained a total of 12,039 distinct foraging trips from 5419 individual birds, with a mean of 21 tracked individuals (range 5 - 119) per dataset, and included >10% of the species in each family that breed in the Atlantic Ocean basin (Table 1).

As expected, seabird species varied enormously in foraging trip characteristics, with single foraging trips ranging from <1 km to >12,000 km (Table 2). There was considerable variation

within species and families in the foraging range, and some of this variation was explained by the breeding stage (Fig. 1). Despite substantial variation among breeding stages, species and colonies, there was clear evidence that foraging range varied at the family level (LR-Test $\chi^2_9 = 55.57$, $p < 0.001$), with cormorants having the shortest ranges, and albatrosses the largest (Table 2, Fig. 1). This pattern remained equally strong if only a single trip per individual was used in the analysis (Table S2).

<<<< FIGURE 1 here >>>>

Seabirds also varied markedly in the extent to which they congregated at sea. The average Bhattacharyya's Affinity index for a given dataset ranged from virtually no overlap ($BA < 0.001$ for four datasets; Adélie Penguin *Pygoscelis adeliae*, European Shag *Phalacrocorax aristotelis*, Common Guillemot *Uria aalge*, Tristan Albatross *Diomedea dabbenena*) to very high overlap ($BA = 0.91$; Magellanic Penguin *Spheniscus magellanicus*). Due to the high variation in overlap among species and between breeding stages, there was no significant variation among families (LR-Test $\chi^2_9 = 12.22$, $p = 0.20$). For most families there was higher overlap during chick-rearing than during incubation (Fig. 2). Cormorants, gulls and auks had consistently high overlap in both breeding stages, while albatrosses and frigatebirds showed consistently low overlap (Fig. 2).

Owing to variability in travel distance and aggregation, the size of the marine area exploited by seabird populations during the breeding season varied by six orders of magnitude among families (Table 2; LR-Test $\chi^2_9 = 57.91$, $p < 0.001$), with cormorants and penguins having generally the smallest exploited areas and albatrosses and Great Shearwaters (*Ardenna gravis*) the largest (Table 2).

<<<< FIGURE 2 here >>>>

Low overlap of individual core ranges can frequently lead to unrepresentative tracking data, as the foraging behaviour of untracked individuals is poorly captured by those already tracked. There were 101 (48%) datasets that did not meet the criteria for representativeness

that would be required to designate marine important bird areas following Lascelles et al. (2016), with 100% of the frigatebird datasets ($n = 3$) and 80% of albatross datasets ($n = 20$) not representative at the population level. For gulls, penguins and gannets, >60% of datasets were representative (Table S3). There was a positive correlation between the number of individuals tracked and the level of representativeness ($r_s = 0.332$, $p < 0.01$, $n = 210$), and of the datasets that included >50 individuals only three were not representative (all from albatrosses, Fig. S1).

Accounting for the level of representativeness of each dataset, and simulating the size of an area of concentrated use across a range of sample sizes, there was a strong effect of family on the size of areas of concentrated use (LR-Test $\chi^2_8 = 57.91$, $p < 0.001$). The largest areas of concentrated use were found in albatrosses and gannets, and the smallest in cormorants and gulls, but within each family, the size of the area of concentrated use varied by two to four orders between different species and breeding stages (Fig. 3).

<<<< FIGURE 3 here >>>>

There was a negative correlation between the level of spatial aggregation at sea and the size of the area exploited during the breeding season ($r_s = -0.285$, $p < 0.001$, $n = 210$), resulting in a gradient of space-use that can inform the relevant scales for conservation management (Fig. 4). Species with large ranges generally had low spatial aggregation (bottom right in Fig. 4), and were mostly albatrosses, petrels, shearwaters, storm petrels, frigatebirds and tropicbirds. Short-ranging species were mostly cormorants, auks and gulls, and tended to show higher aggregation at sea (top left in Fig. 4). For most species, tracked birds had smaller ranges and showed greater aggregation during the chick-rearing than during the incubation stage.

<<<< FIGURE 4 here >>>>

4. Discussion

Seabird species range from those that congregate at sea and can be efficiently protected within a small area, to those that disperse widely and range over areas that can encompass

millions of square kilometres. For the study species in the Atlantic Ocean basin, there were consistent differences among families in both maximum foraging range and the size of areas used at sea. Within this spectrum, albatrosses, petrels, storm petrels, frigatebirds, and tropicbirds travelled on average farther and dispersed more widely at sea during the breeding season than cormorants, penguins, auks, and gulls, although there was considerable variation within each family. Although some species may have recently shifted or expanded their foraging ranges due to climate-induced changes in the marine environment [48, 72], these shifts in spatial location are unlikely to be a result of fundamental changes to the species' travel capabilities, and our broad conclusions are therefore robust to climatic changes in the near future.

Our synthesis can be used to identify the management approaches likely to be most effective given the geographic scale over which the threats to a certain species need to be addressed. For some species, this broad-scale information at the family level may be sufficient to implement certain conservation actions without the need for further detailed data on individual movements from a given colony [6, 35, 73]. Some of the widely dispersing species use areas at sea that may be considered too large for the establishment and enforcement of strict marine reserves that ban all economic activity that negatively affect birds and other biodiversity [4, 19, 20]. However, other management approaches that reduce threats such as bycatch in fishing gear or depletion of prey resources can be implemented across very large spatial scales – either within appropriately managed protected areas that regulate rather than ban economic activities, or in the framework of other effective area-based management measures or sustainable-use regulations that apply to large marine regions without the designation of protected areas [74-77]. All management approaches should also consider that not only seabirds, but also their threats may disperse at sea and occur only in certain areas or at certain times. Static structures such as wind turbines or gillnets will affect seabirds only at one location, whereas oil, plastics and other pollutants disperse freely with currents and therefore need to be managed at different spatial scales [5]. Threats from fisheries will only occur where a particular fishery operates, and regulation of such fisheries is most important where fisheries and species vulnerable to interactions co-occur [30]. Hence, multiple management mechanisms addressing various threats in time and space may be required to safeguard particular species.

Our data represent some families better than others, and our results may not be fully representative of species-rich families such as gulls and terns, or storm petrels. For some

families there may also be significant intra-family variation, which our data collation may not capture appropriately: penguins, for example, include both migrant and resident species, but our tracking data encompassed mostly migrant species, which have greater foraging ranges even during the breeding season [78]. Nonetheless, for families that encompass few species, such as the tropicbirds and the frigatebirds, the information provided here is likely more accurate and transferrable than for the gull family which encompasses >40 species in the Atlantic Ocean basin with a diverse range of body sizes and travel capabilities [79, 80]. Because high-resolution GPS tracking devices have only recently become small enough to track small seabirds [81], our data are biased towards larger-bodied species, with many storm petrels, small auks, and diving petrels not yet represented in tracking databases. Hence, while our study is a useful first step towards synthesizing seabird tracking data, there are some knowledge gaps where strategic tracking of certain families and species groups will advance our understanding of the space-use of smaller seabirds in the future.

Besides the incomplete coverage of all species within each family, there was large variation in the number of colonies from which tracking data for a given species were available. Seabird foraging ranges are known to vary within species, with respect to colony size and environmental factors such as ocean productivity and the foraging habitat available within a given radius [56, 66, 82-84]. The inclusion of tracking data from either a very small or a very large colony may therefore have misrepresented the typical space-use of particular species [85]. While such differences need to be considered for the implementation of specific protection measures, our broad scale analysis indicated that the differences in space-use between families were generally larger than differences within species, and our overall conclusions are unlikely to be affected by a few atypical datasets.

Our results also highlight that for some families the space-use patterns vary substantially between incubation and the chick-rearing stage (Figs 1 and 2, Table 2), which may be relevant for seasonal site protection or other dynamic area-based management measures that aim to regulate certain activities during discrete periods [86]. However, some of the apparent variation between breeding stages might be a consequence of varying data coverage and inter-specific differences. For example, among gannets and boobies our results seem to indicate that birds have extremely low spatial aggregation during incubation compared to brood-guard (Fig. 2). This pattern is potentially because the largest gannet in our dataset, the Northern Gannet (*Morus bassanus*), which forages in temperate and productive waters, has mostly been tracked while feeding chicks [87-89], whereas the available data

during incubation were from the smaller, tropical boobies, which forage in less productive waters and may therefore disperse more widely at sea [90-92]. Nonetheless, our data clearly indicate that most seabirds have smaller foraging ranges and show greater aggregation at sea during the chick-rearing than the incubation period, which could be used to inform appropriate management approaches at different times of the breeding cycle.

The dataset and space-use metrics that was collated could also be used with various explanatory variables to understand the causes of variation and predict the likely movement scales of other species of seabirds for which no tracking data exist. Such extrapolations have been applied successfully to different colonies within species [83], but if space-use requirements can also be predicted across species then some conservation management may proceed on that basis rather than await species-specific local tracking data [93, 94]. The generality of the differences found among families could be tested with data from additional species, regions and marine systems, or life-history stages. Nonetheless, researchers considering which seabirds to track for the purpose of improving conservation management are encouraged to first critically examine the value that the collected data will add to existing knowledge [35, 36, 95].

Our review focussed on adult birds during the breeding season to facilitate a broad taxonomic comparison. However, in long-lived seabirds, immature or adult birds not actively breeding may comprise a larger proportion of the total population, and may have fundamentally different space-use patterns and distributions than breeding adults [96-98]. Seabird conservation therefore requires not only the protection of breeding adults, but also of other life stages, which may not occur in the same spatial area. The broad scales of space-use that are summarised here for breeding adults will not be sufficient to evaluate all potential spatial overlaps with threats that may lead to population declines, and further tracking of highly threatened species or different life stages may be required to facilitate effective management [35].

In summary, seabirds are well-known indicators for the health of the marine environment [12-14], and may therefore constitute a useful tool for marine spatial planning. Many seabirds, especially cormorants, penguins, auks, and gulls congregate in certain areas at sea which are useful candidates for area-based management approaches such as marine protected areas. Marine protected areas can be managed in a variety of ways that may permit and regulate certain economic activities, and for marine protected areas of very large size, the

complete exclusion of all economic activities may neither be practical nor desirable [18, 19, 99]. Our results show that some families, especially albatrosses, petrels, storm petrels and highly pelagic tropical species such as frigatebirds and tropicbirds, disperse widely at sea, and require management approaches that are implemented at large scales such as bycatch regulations, compliance monitoring and other fisheries observer programmes, or large-scale spatial and temporal fishing closures.

5. Acknowledgements

This analysis was facilitated by the Seabird Tracking database hosted by BirdLife International (www.seabirdtracking.org). We thank many volunteers and the following individuals for assistance during data collection: Abdou Diouf, Nicolas Gomis, Moussa Samb (Direction of National Parks, Senegal), Stanislas Malou, Sokna Momie (University Cheikh Anta Diop of Dakar, Senegal), Kenickie Andrews, Derren Fox, Nathan Fowler, Julia Sommerfeld, Pete Mayhew, Eelke Folmer, Almut Schlaich, Willem and Inge Bouten, Roland Gauvain, Phil Atkinson (BTO), Chantelle Burke, Bronwyn Harkness, Rielle Hoeg, Sofia Karabatsos, Amy-Lee Kouwenberg, Regan Maloney, Hilary Mann, Marina Montevocchi, Myriam Trottier-Paquet, Michelle Valliant, Skomer Wardens, Ben Dean, Holly Kirk, Robin Freeman, Dave Boyle, Chris Perrins, Helen Peat, Andrew Wood, Samir Martins, Pedro López, Sergi Torn, Adrià Compte, Marina Pastor, Diniz Montrond, and Artur Lópes. We appreciate the financial and logistical support of the following institutions during data collection: Enterprise St Helena, Darwin Initiative, Department for Environment, Food, and Rural Affairs (UK), St Helena Nature Conservation Group, St Helena National Trust, Falkland Islands Government, Tristan da Cunha Government, South African Department of Environmental Affairs (South African National Antarctic Programme), National Research Foundation (South Africa), University of Cape Town, Instituto Chico Mendes de Conservação da Biodiversidade (ICMBio/MMA), Ascension Island Government, MAVA Foundation, Anguilla National Trust, Jost van Dyke Preservation Society, Alderney Commission for Renewable Energy, Alderney Wildlife Trust, The Seabird Group, Wildlife Conservation Society, Department of Environment and Climate Change (Government of Canada), Bird Studies Canada, Netherlands AntArctic Program, Netherlands Organisation for Scientific Research (NWO), Australian Antarctic Division, Microsoft Research Cambridge, UK Natural Environment Research Council, Northern Ireland Environment Agency, Scottish

Natural Heritage, Birds of Lundy Fund, Merton College (Oxford), Skokholm Islands Advisory Committee, Wildlife Trust for South and West Wales, Copeland Bird Observatory, Landmark Trust, National Trust for Scotland, LIFE+ program of the European Union (LIFE10/MT/090), Maltese Ministry for Sustainable Development, the Environment and Climate Change, SPEA, Ministerio de Ciencia e Innovación and Fondos FEDER (CGL2013-42585-P). We thank BirdFair and the German Federal Ministry for the Environment, Nature Conservation and Nuclear Safety, through the International Climate Initiative (GOBI IKI project), for the support to BirdLife International. Juan F. Masello received financial support from the German Research Foundation (DFG SPP 1158, MA2574/6–1). FCT - Portugal provided financial support through the strategic project UID/MAR/04292/2013 granted to MARE and the project PTDC/BIA-ANM/3743/2014 and project UID/AMB/ 50017/2013 and FEDER funds granted to CESAM, within the PT2020 Partnership Agreement and Compete 2020, as well as project PTDC/MAR-PRO/0929/2014. Leila Figueiredo and Marcio Amorim Efe received financial support by FAPEAL. The Grupo o Boticário de Proteção a Natureza provided funds to the project granted to MAE (No. 1012_20141) via Fundação Universitária de Desenvolvimento de Extensão e Pesquisa (FUNDEPES). Ewan Wakefield was funded by the UK Natural Environmental Research Council (NERC) grant NE/M017990/1. We thank Kate Jennings, Alex Kinninmoth, Gareth Cunningham, Mike Brooke, and anonymous reviewers for constructive comments on an earlier draft of the manuscript.

6. References

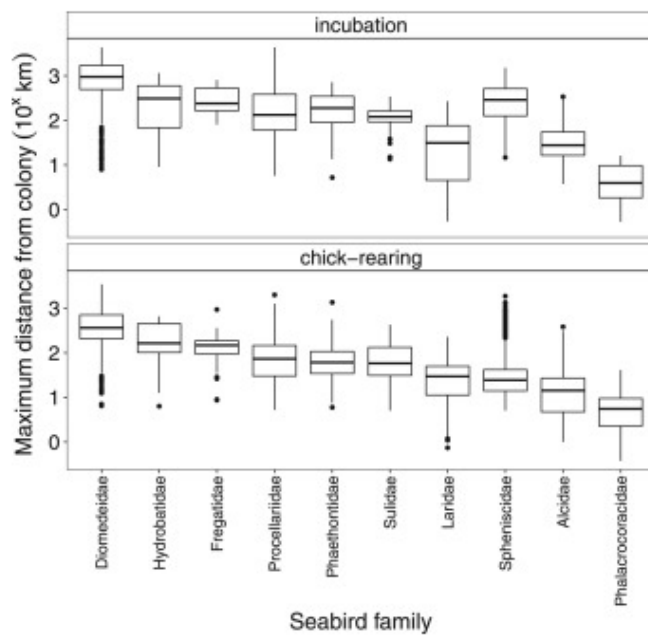
1. Lascelles, B.G., et al., Applying global criteria to tracking data to define important areas for marine conservation. *Diversity and Distributions*, 2016. **22**(4): p. 422-431.
2. Devillers, R., et al., Reinventing residual reserves in the sea: are we favouring ease of establishment over need for protection? *Aquatic Conservation: Marine and Freshwater Ecosystems*, 2014. **25**(4): p. 480-504.
3. Roff, J.C., M.E. Taylor, and J. Laughren, Geophysical approaches to the classification, delineation and monitoring of marine habitats and their communities. *Aquatic Conservation: Marine and Freshwater Ecosystems*, 2003. **13**(1): p. 77-90.
4. Agardy, T., G.N. di Sciara, and P. Christie, Mind the gap: Addressing the shortcomings of marine protected areas through large scale marine spatial planning. *Marine Policy*, 2011. **35**(2): p. 226-232.
5. Boersma, P.D. and J.K. Parrish, Limiting abuse: marine protected areas, a limited solution. *Ecological Economics*, 1999. **31**(2): p. 287-304.
6. Allen, A.M. and N. Singh, Linking movement ecology with wildlife management and conservation. *Frontiers in Ecology and Evolution*, 2016. **3**.
7. Croxall, J.P., *Seabirds: feeding ecology and role in marine ecosystems*. 1987: Cambridge University Press.

8. Brooke, M.d.L., Albatrosses and petrels across the world. 2004: Oxford University Press, USA.
9. Croxall, J.P., et al., Seabird conservation status, threats and priority actions: a global assessment. *Bird Conservation International*, 2012. **22**(01): p. 1-34.
10. Phillips, R.A., et al., The conservation status and priorities for albatrosses and large petrels. *Biological Conservation*, 2016. **201**: p. 169-183.
11. Lewison, R.L., et al., Global patterns of marine mammal, seabird, and sea turtle bycatch reveal taxa-specific and cumulative megafauna hotspots. *Proceedings of the National Academy of Sciences*, 2014. **111**(14): p. 5271-5276.
12. Parsons, M., et al., Seabirds as indicators of the marine environment. *ICES Journal of Marine Science*, 2008. **65**(8): p. 1520-1526.
13. Cairns, D.K., Seabirds as indicators of marine food supplies. *Biological Oceanography*, 1988. **5**(4): p. 261-271.
14. Frederiksen, M., R.A. Mavor, and S. Wanless, Seabirds as environmental indicators: the advantages of combining data sets. *Marine Ecology Progress Series*, 2007. **352**: p. 205-211.
15. Clay, T.A., et al., Escaping the oligotrophic gyre? The year-round movements, foraging behaviour and habitat preferences of *Murphy's petrels*. *Marine Ecology Progress Series*, 2017. **579**: p. 139-155.
16. Weimerskirch, H., et al., Foraging movements of great frigatebirds from Aldabra Island: Relationship with environmental variables and interactions with fisheries. *Progress in Oceanography*, 2010. **86**(1-2): p. 204-213.
17. Yorio, P., Marine protected areas, spatial scales, and governance: implications for the conservation of breeding seabirds. *Conservation Letters*, 2009. **2**(4): p. 171-178.
18. Horta e Costa, B., et al., A regulation-based classification system for Marine Protected Areas (MPAs). *Marine Policy*, 2016. **72**(Supplement C): p. 192-198.
19. Lubchenco, J., et al., Plugging a hole in the ocean: The emerging science of marine reserves. *Ecological Applications*, 2003. **13**(1): p. S3-S7.
20. Gaines, S.D., et al., Designing marine reserve networks for both conservation and fisheries management. *Proceedings of the National Academy of Sciences*, 2010. **107**(43): p. 18286-18293.
21. Pichegru, L., et al., Marine no-take zone rapidly benefits endangered penguin. *Biology Letters*, 2010. **6**: p. 498-501.
22. Ludynia, K., J. Kemper, and J.-P. Roux, *The Namibian Islands' Marine Protected Area: Using seabird tracking data to define boundaries and assess their adequacy*. *Biological Conservation*, 2012. **156**: p. 136-145.
23. Wilson, L.J., et al., Radio-telemetry as a tool to define protected areas for seabirds in the marine environment. *Biological Conservation*, 2009. **142**(8): p. 1808-1817.
24. Anderson, O.R.J., et al., Global seabird bycatch in longline fisheries. *Endangered Species Research*, 2011. **14**: p. 91-106.
25. Finkelstein, M., et al., Evaluating the potential effectiveness of compensatory mitigation strategies for marine bycatch. *PLoS ONE*, 2008. **3**(6): p. e2480.
26. Cury, P.M., et al., Global seabird response to forage fish depletion - one-third for the birds. *Science*, 2011. **334**(6063): p. 1703-1706.
27. Sydeman, W.J., et al., Best practices for assessing forage fish fisheries-seabird resource competition. *Fisheries Research*, 2017. **194**: p. 209-221.
28. Croxall, J., et al., Appropriate scales and data to manage seabird-fishery interactions: Comment on Torres et al. (2013). *Marine Ecology Progress Series*, 2013. **493**: p. 297-300.
29. Torres, L.G., et al., Scaling down the analysis of seabird-fishery interactions. *Marine Ecology Progress Series*, 2013. **473**: p. 275-289.
30. Tuck, G.N., et al., An assessment of seabird-fishery interactions in the Atlantic Ocean. *ICES Journal of Marine Science*, 2011. **68**(8): p. 1628-1637.
31. Weimerskirch, H., et al., Foraging strategy of wandering albatrosses through the breeding season: a study using satellite telemetry. *Auk*, 1993. **110**: p. 325-342.
32. Ropert-Coudert, Y. and R.P. Wilson, Trends and perspectives in animal-attached remote sensing. *Frontiers in Ecology and the Environment*, 2005. **3**(8): p. 437-444.

33. Burger, A.E. and S.A. Shaffer, Application of tracking and data-logging technology in research and conservation of seabirds. *Auk*, 2008. **125**(2): p. 253-264.
34. BirdLife International, Tracking Ocean Wanderers – The Seabird Tracking Database. 2017.
35. McGowan, J., et al., Integrating research using animal-borne telemetry with the needs of conservation management. *Journal of Applied Ecology*, 2017. **54**(2): p. 423-429.
36. Canessa, S., et al., When do we need more data? A primer on calculating the value of information for applied ecologists. *Methods in Ecology and Evolution*, 2015. **6**(10): p. 1219-1228.
37. BirdLife International, Tracking Ocean Wanderers: The global distribution of albatrosses and petrels. Results from the Global Procellariiform Tracking Workshop, 1–5 September, 2003, Gordon's Bay, South Africa. 2004, BirdLife International: Cambridge, UK. p. 116.
38. Dias, M.P., et al., Using globally threatened pelagic birds to identify priority sites for marine conservation in the South Atlantic Ocean. *Biological Conservation*, 2017. **211, Part A**: p. 76-84.
39. Wakefield, E.D., et al., Long-term individual foraging site fidelity—why some gannets don't change their spots. *Ecology*, 2015. **96**(11): p. 3058-3074.
40. Soanes, L.M., et al., How many seabirds do we need to track to define home-range area? *Journal of Applied Ecology*, 2013. **50**(3): p. 671-679.
41. Abadi, F., C. Barbraud, and O. Gimenez, Integrated population modeling reveals the impact of climate on the survival of juvenile emperor penguins. *Global Change Biology*, 2017. **23**(3): p. 1353-1359.
42. Sanz-Aguilar, A., et al., Contrasting age-specific recruitment and survival at different spatial scales: a case study with the European storm petrel. *Ecography*, 2009. **32**(4): p. 637-646.
43. Alerstam, T., A. Hedenström, and S. Åkesson, Long-distance migration: evolution and determinants. *Oikos*, 2003. **103**(2): p. 247-260.
44. Newton, I. and L.C. Dale, Relationship between migration and latitude among West European birds. *Journal of Animal Ecology*, 1996. **65**(2): p. 137-146.
45. Granadeiro, J.P., et al., Mysterious attendance cycles in Cory's shearwater, *Calonectris diomedea*: an exploration of patterns and hypotheses. *Animal Behaviour*, 2009. **78**(6): p. 1455-1462.
46. Phillips, R.A., et al., Albatross foraging behaviour: no evidence for dual foraging, and limited support for anticipatory regulation of provisioning at South Georgia. *Marine Ecology Progress Series*, 2009. **391**: p. 279-292.
47. Boersma, P.D. and G.A. Rebstock, Foraging distance affects reproductive success in Magellanic penguins. *Marine Ecology Progress Series*, 2009. **375**: p. 263-275.
48. Louzao, M., et al., Foraging in a changing environment: habitat shifts of an oceanic predator over the last half century. *Ecography*, 2013. **36**(1): p. 057-067.
49. Hazen, E.L., et al., Predicted habitat shifts of Pacific top predators in a changing climate. *Nature Climate Change*, 2012. **3**: p. 234.
50. Shimada, T., et al., Improving data retention and home range estimates by data-driven screening. *Marine Ecology Progress Series*, 2012. **457**: p. 171-180.
51. Börger, L., et al., Effects of sampling regime on the mean and variance of home range size estimates. *Journal of Animal Ecology*, 2006. **75**(6): p. 1393-1405.
52. Soanes, L.M., et al., Defining marine important bird areas: Testing the foraging radius approach. *Biological Conservation*, 2016. **196**: p. 69-79.
53. Thaxter, C., et al., Seabird foraging ranges as a preliminary tool for identifying candidate Marine Protected Areas. *Biological Conservation*, 2012. **156**: p. 53-61.
54. Grecian, W.J., et al., A novel projection technique to identify important at-sea areas for seabird conservation: an example using Northern gannets breeding in the North East Atlantic. *Biological Conservation*, 2012. **156**: p. 43-52.
55. Masello, J.F., et al., How animals distribute themselves in space: variable energy landscapes. *Frontiers in Zoology*, 2017. **14**(1): p. 33.
56. Masello, J.F., et al., Diving seabirds share foraging space and time within and among species. *Ecosphere*, 2010. **1**.

57. Nilsen, E., S. Pedersen, and J. Linnell, Can minimum convex polygon home ranges be used to draw biologically meaningful conclusions? *Ecological Research*, 2008. **23**(3): p. 635-639.
58. Tancell, C., et al., Comparison of methods for determining key marine areas from tracking data. *Marine Biology*, 2013. **160**(1): p. 15-26.
59. Pinaud, D. and H. Weimerskirch, Scale-dependent habitat use in a long-ranging central place predator. *Journal of Animal Ecology*, 2005. **74**(5): p. 852-863.
60. Dragon, A., et al., Comparative analysis of methods for inferring successful foraging areas from Argos and GPS tracking data. *Marine Ecology Progress Series*, 2012. **452**: p. 253-267.
61. Weimerskirch, H., Are seabirds foraging for unpredictable resources? *Deep Sea Research Part II*, 2007. **54**(3-4): p. 211-223.
62. Fieberg, J. and C.O. Kochanny, Quantifying home-range overlap: the importance of the utilization distribution. *Journal of Wildlife Management*, 2005. **69**(4): p. 1346-1359.
63. Lindberg, M.S. and J. Walker, Satellite telemetry in avian research and management: Sample size considerations. *Journal of Wildlife Management*, 2007. **71**(3): p. 1002-1009.
64. Stevens, V.M., et al., A comparative analysis of dispersal syndromes in terrestrial and semi-terrestrial animals. *Ecology Letters*, 2014. **17**(8): p. 1039-1052.
65. Hays, G.C., et al., Key questions in marine megafauna movement ecology. *Trends in Ecology & Evolution*, 2016. **31**(6): p. 463-475.
66. Jovani, R., et al., Colony size and foraging range in seabirds. *Oikos*, 2016. **125**(7): p. 968-974.
67. Phillips, R.A., et al., Causes and consequences of individual variability and specialization in foraging and migration strategies of seabirds. *Marine Ecology Progress Series*, 2017. **578**: p. 117-150.
68. Brewer, M.L. and F. Hertel, Wing morphology and flight behavior of pelecaniform seabirds. *Journal of Morphology*, 2007. **268**(10): p. 866-877.
69. Bolker, B.M., et al., Generalized linear mixed models: a practical guide for ecology and evolution. *Trends in Ecology & Evolution*, 2009. **24**(3): p. 127-135.
70. Lewis, F., A. Butler, and L. Gilbert, A unified approach to model selection using the likelihood ratio test. *Methods in Ecology and Evolution*, 2011. **2**(2): p. 155-162.
71. R Core Team, R: A language and environment for statistical computing. 2017, R Foundation for Statistical Computing: Vienna, Austria.
72. Divoky, G.J., P.M. Lukacs, and M.L. Druckenmiller, Effects of recent decreases in arctic sea ice on an ice-associated marine bird. *Progress in Oceanography*, 2015. **136**: p. 151-161.
73. McGowan, J. and H. Possingham, Commentary: Linking movement ecology with wildlife management and conservation. *Frontiers in Ecology and Evolution*, 2016. **4**: p. 1-3.
74. Abbott, J.K. and J.E. Wilen, Regulation of fisheries bycatch with common-pool output quotas. *Journal of Environmental Economics and Management*, 2009. **57**(2): p. 195-204.
75. Moore, J.E., et al., A review of marine mammal, sea turtle and seabird bycatch in USA fisheries and the role of policy in shaping management. *Marine Policy*, 2009. **33**(3): p. 435-451.
76. Gilman, E.L., P. Dalzell, and S. Martin, Fleet communication to abate fisheries bycatch. *Marine Policy*, 2006. **30**(4): p. 360-366.
77. Gilman, E., D. Kobayashi, and M. Chaloupka, Reducing seabird bycatch in the Hawaii longline tuna fishery. *Endangered Species Research*, 2008. **5**(2-3): p. 309-323.
78. Croxall, J. and L. Davis, Penguins: paradoxes and patterns. *Marine Ornithology*, 1999. **27**(1): p. 1-12.
79. Egevang, C., et al., Tracking of Arctic terns *Sterna paradisaea* reveals longest animal migration. *Proceedings of the National Academy of Sciences*, 2010: p. -.
80. Stenhouse, I.J., C. Egevang, and R.A. Phillips, Trans-equatorial migration, staging sites and wintering area of *Sabine's Gulls* *Larus sabini* in the Atlantic Ocean. *Ibis*, 2012. **154**(1): p. 42-51.
81. Bouten, W., et al., A flexible GPS tracking system for studying bird behaviour at multiple scales. *Journal of Ornithology*, 2013. **154**(2): p. 571-580.
82. Lewis, S., et al., Evidence of intra-specific competition for food in a pelagic seabird. *Nature*, 2001. **412**(6849): p. 816-819.

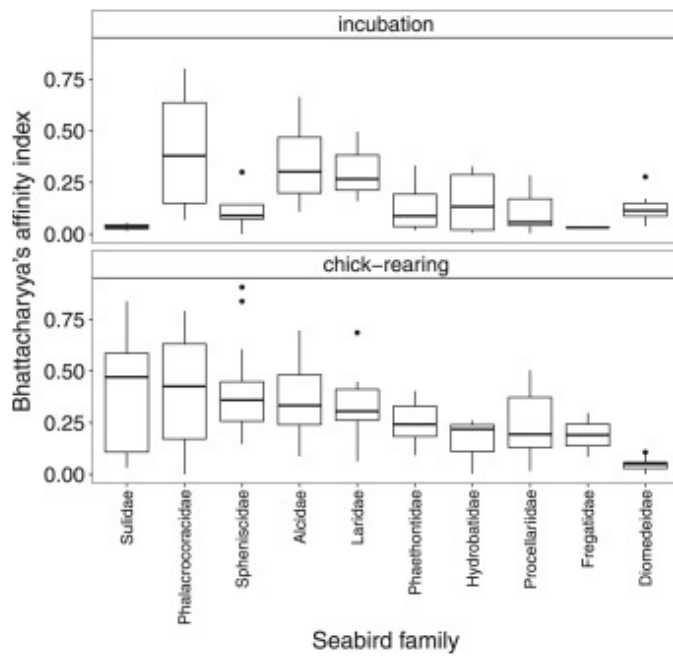
83. Wakefield, E.D., et al., Breeding density, fine-scale tracking and large-scale modeling reveal the regional distribution of four seabird species. *Ecological Applications*, 2017. **27**(7): p. 2074–2091.
84. Boersma, P.D., et al., Following the fish: penguins and productivity in the South Atlantic. *Ecological Monographs*, 2009. **79**(1): p. 59-76.
85. Weimerskirch, H., M. Le Corre, and C.A. Bost, Foraging strategy of masked boobies from the largest colony in the world: relationship to environmental conditions and fisheries. *Marine Ecology Progress Series*, 2008. **362**: p. 291-302.
86. Game, E.T., et al., Pelagic protected areas: the missing dimension in ocean conservation. *Trends in Ecology & Evolution*, 2009. **24**(7): p. 360-369.
87. Cleasby, I.R., et al., Three-dimensional tracking of a wide-ranging marine predator: flight heights and vulnerability to offshore wind farms. *Journal of Applied Ecology*, 2015. **52**(6): p. 1474-1482.
88. Hamer, K.C., et al., Contrasting foraging strategies of gannets *Morus bassanus* at two North Atlantic colonies: foraging trip duration and foraging area fidelity. *Marine Ecology Progress Series*, 2001. **224**: p. 283-290.
89. Patrick, S.C., et al., Individual differences in searching behaviour and spatial foraging consistency in a central place marine predator. *Oikos*, 2014. **123**(1): p. 33-40.
90. Mendez, L., et al., Geographical variation in the foraging behaviour of the pantropical red-footed booby. *Marine Ecology Progress Series*, 2017. **568**: p. 217-230.
91. Oppel, S., et al., *Foraging distribution of a tropical seabird supports Ashmole's hypothesis of population regulation*. *Behavioral Ecology and Sociobiology*, 2015. **69**(6): p. 915-926.
92. Soanes, L.M., et al., Important foraging areas of seabirds from Anguilla, Caribbean: Implications for marine spatial planning. *Marine Policy*, 2016. **70**: p. 85-92.
93. Maxwell, S.L., et al., How much is new information worth? Evaluating the financial benefit of resolving management uncertainty. *Journal of Applied Ecology*, 2014. **52**: p. 12-20.
94. Grantham, H.S., et al., Diminishing return on investment for biodiversity data in conservation planning. *Conservation Letters*, 2008. **1**(4): p. 190-198.
95. Latham, A.D.M., et al., The GPS craze: six questions to address before deciding to deploy GPS technology on wildlife. *New Zealand Journal of Ecology*, 2015. **39**(1): p. 143.
96. Phillips, R.A., et al., Summer distribution and migration of nonbreeding albatrosses: Individual consistencies and implications for conservation. *Ecology*, 2005. **86**(9): p. 2386-2396.
97. Péron, C. and D. Grémillet, Tracking through life stages: adult, immature and juvenile autumn migration in a long-lived seabird. *PLoS ONE*, 2013. **8**(8): p. e72713.
98. Thiebot, J.-B., et al., Larger foraging range but similar habitat selection in non-breeding versus breeding sub-Antarctic penguins. *Antarctic Science*, 2011. **23**(2): p. 117-126.
99. Hobday, A.J., et al., Dynamic ocean management: Integrating scientific and technological capacity with law, policy and management. *Stanford Environmental Law Journal*, 2014. **33**(2): p. 125-165.



[Download : Download high-res image \(180KB\)](#)

[Download : Download full-size image](#)

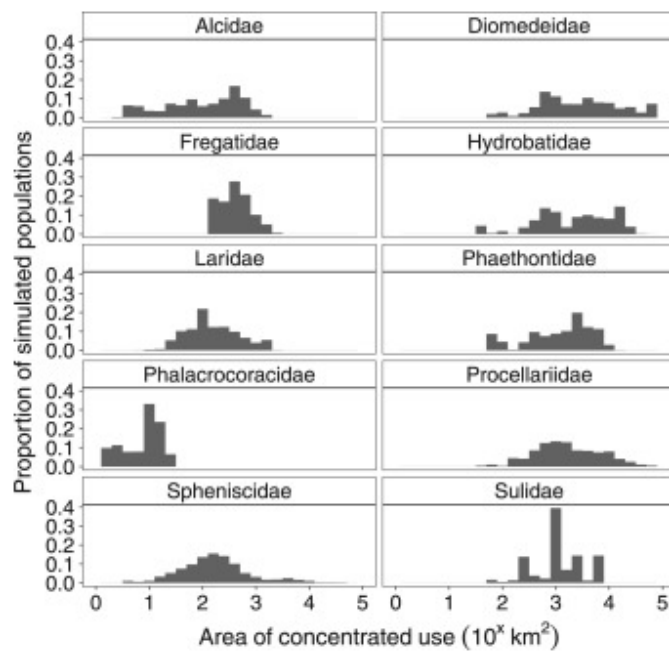
Fig. 1. Foraging range of 52 species of ten seabird families during incubation and chick-rearing based on foraging trips of 5419 adult birds tracked with GPS or PTT devices. Boxplots indicate medians (thick horizontal bar) of all trips for a given family, first and third quartiles (box), 95% confidence intervals (vertical lines), and outliers (points). Families ordered by decreasing median foraging range during chick-rearing; see [Table 1](#) for common names.



[Download : Download high-res image \(178KB\)](#)

[Download : Download full-size image](#)

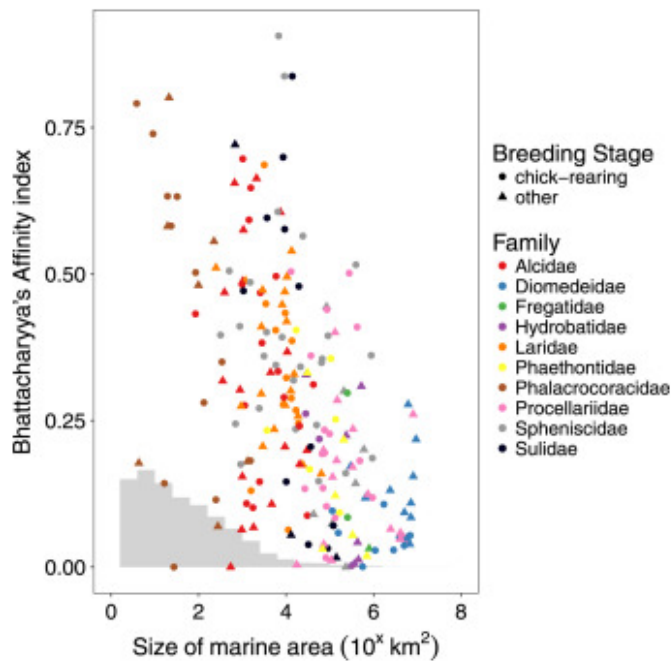
Fig. 2. Spatial aggregation (Bhattacharyya's Affinity) index for 52 species of ten seabird families during incubation and chick-rearing. Boxplots indicate medians (thick horizontal bar) across all unique data groups (Table S1) for a given family, first and third quartiles (box), 95% confidence intervals (vertical lines), and outliers (points). Families ordered by decreasing median BA during chick-rearing; see Table 1 for common names.



[Download : Download high-res image \(239KB\)](#)

[Download : Download full-size image](#)

Fig. 3. Frequency distribution of the size of marine areas that encompass important activity derived from tracking data of 52 species of ten seabird families and simulated across a range of sample sizes. For each unique data group (Table S1) we used 30 random sub-samples of foraging tracks for each sample size and iteratively calculated the area that encompasses important activity from the selected subset. See Table 1 for common names.



[Download](#) : [Download high-res image \(252KB\)](#)

[Download](#) : [Download full-size image](#)

Fig. 4. Spatial aggregation (Bhattacharyya's Affinity index) and space use requirements (size of exploited marine area encompassing 95% of tracking locations) for 52 species of ten seabird families during either the chick-rearing period or other breeding stages (incubation, unspecified). The grey histogram is for reference only and shows the proportion (shown at scale 0–1) of currently existing marine protected areas of a given size (www.protectedplanet.net). See [Table 1](#) for common names.

Table 1

Number of tracking datasets per seabird family and breeding stage used to quantify spatial distribution and aggregation patterns of seabirds. Each dataset contained a unique combination of species, colony, breeding stage and tracking device (see [Table S1](#) for details). Note that ‘% of species in Atlantic’ is the percentage of tracked species among those species of a given family that breed in the Atlantic Ocean basin.

Family	Common names	<i>n</i> species	% of species in Atlantic	incubation	chick-rearing	unspecified breeding	Total
Alcidae	Auks	4	67	9	17	9	35
Diomedeidae	Albatrosses	6	100	10	9	1	20
Fregatidae	Frigatebirds	2	50	1	2	0	3
Hydrobatidae	Storm petrels	3	60	6	3	0	9
Laridae	Gulls and terns	6	14	10	12	9	31
Phaethontidae	Tropicbirds	2	100	6	6	0	12
Phalacrocoracidae	Cormorants and shags	3	27	4	12	3	19
Procellariidae	Petrels and shearwaters	16	43	13	16	4	33
Spheniscidae	Penguins	7	78	5	27	2	34
Sulidae	Gannets and boobies	3	60	2	11	1	14
Total				66	115	29	210

Table 2

The scale of travel capabilities (median and range) of 52 species of seabirds during the breeding season averaged across all studied colonies. Distances refer to individual foraging trips, the size of the exploited area is based on a 95% minimum convex polygon around all foraging trip locations from a colony.

Family	Species	breeding stage	trip distance (km)	max distance from colony (km)	exploited area (1000 km ²)	
Alcidae	<i>Alca torda</i>	incubation	80 (8–831)	28 (4–301)	2 (0–30)	
	<i>Alca torda</i>	chick-rearing	60 (9–757)	24 (4–314)	2 (1–31)	
	<i>Alca torda</i>	unspec. breeding	50 (12–500)	21 (5–131)	1 (0.36–7.44)	
	<i>Cepphus grylle</i>	chick-rearing	6 (2–98)	2 (1–8)	0.08	
	<i>Fratercula arctica</i>	chick-rearing	37 (3–1376)	13 (1–383)	13 (1–42)	
	<i>Uria aalge</i>	incubation	92 (12–837)	28 (4–339)	13 (5–20)	
	<i>Uria aalge</i>	chick-rearing	54 (7–195)	18 (4–73)	2 (2–3)	
	<i>Uria aalge</i>	unspec. breeding	49 (12–625)	19 (5–274)	1 (1–11)	
	Diomededeidae	<i>Diomedea dabbenena</i>	incubation	2023 (21–14447)	578 (9–3232)	7159 (7154–7165)
<i>Diomedea dabbenena</i>		chick-rearing	1041 (158–8439)	408 (75–3438)	2794 (562–5026)	
<i>Diomedea exulans</i>		incubation	4738 (29–12369)	1162 (8–2525)	5080	
<i>Diomedea exulans</i>		chick-rearing	2038 (16–18776)	511 (6–3351)	4303 (1724–6883)	
<i>Phoebastria fusca</i>		incubation	5653 (1925–9616)	1280 (690–1872)	2398	
<i>Phoebastria fusca</i>		unspec. breeding	1581 (87–24582)	600 (31–3336)	9375	
<i>Thalassarche chlororhynchus</i>		incubation	7342 (29–11673)	2552 (13–3600)	7141 (6200–8082)	
<i>Thalassarche chrysostoma</i>		incubation	4249 (2107–11645)	1121 (604–4303)	6746	
<i>Thalassarche chrysostoma</i>		chick-rearing	1493 (62–13725)	524 (30–2519)	1982 (1094–2870)	
<i>Thalassarche melanophris</i>		incubation	2906 (41–10570)	856 (20–2644)	649 (300–5833)	
<i>Thalassarche melanophris</i>		chick-rearing	820 (43–7594)	282 (16–1940)	156 (114–3880)	
Fregatidae		<i>Fregata aquila</i>	incubation	735 (233–3113)	239 (80–803)	793
		<i>Fregata aquila</i>	chick-rearing	524 (229–2141)	165 (76–360)	254
	<i>Fregata magnificens</i>	chick-rearing	339 (33–2343)	83 (9–934)	252	
Hydrobatidae	<i>Hydrobates castro</i>	incubation	1384 (38–3285)	348 (14–872)	452	
	<i>Hydrobates leucorhous</i>	incubation	1234 (30–4541)	388 (13–1154)	397 (237–525)	
	<i>Hydrobates leucorhous</i>	chick-rearing	1327 (104–2020)	447 (50–657)	318	
	<i>Hydrobates pelagicus</i>	incubation	514 (18–942)	166 (9–270)	29	
	<i>Hydrobates pelagicus</i>	chick-rearing	388 (13–1193)	137 (6–365)	43 (28–57)	
Laridae	<i>Anous stolidus</i>	incubation	190 (7–779)	75 (2–269)	64	
	<i>Hydroprogne caspia</i>	unspec. breeding	65 (1–422)	28 (1–131)	8	
	<i>Larus scoresbii</i>	unspec. breeding	18 (2–192)	8 (1–19)	0.25	
	<i>Onychoprion fuscatus</i>	chick-rearing	242 (86–307)	100 (34–128)	11	
	<i>Rissa tridactyla</i>	incubation	91 (2–872)	27 (1–219)	10 (3–24)	
	<i>Rissa tridactyla</i>	chick-rearing	87 (3–690)	29 (1–229)	10 (2–19)	
	<i>Rissa tridactyla</i>	unspec. breeding	72 (2–651)	27 (1–228)	6 (1–15)	
	<i>Thalasseus maximus</i>	unspec. breeding	103 (2–567)	36 (1–158)	13	
	Phaethontidae	<i>Phaethon aethereus</i>	incubation	768 (14–2765)	189 (5–719)	171 (31–706)
<i>Phaethon aethereus</i>		chick-rearing	212 (12–3062)	65 (6–1351)	106 (17–168)	
<i>Phaethon lepturus</i>		chick-rearing	64 (25–225)	21 (9–70)	4	
Phalacrocoracidae	<i>Phalacrocorax aristotelis</i>	incubation	15 (1–117)	4 (1–16)	0.02 (0–0.28)	
	<i>Phalacrocorax aristotelis</i>	chick-rearing	18 (1–70)	7 (1–17)	0.03 (0.02–0.34)	
	<i>Phalacrocorax aristotelis</i>	unspec. breeding	16 (2–58)	7 (1–24)	0.16 (0.1–0.22)	
	<i>Phalacrocorax atriceps</i>	chick-rearing	17 (2–146)	7 (1–41)	0.89 (0.25–1.53)	
	<i>Phalacrocorax atriceps</i>	unspec. breeding	31 (2–122)	8 (1–48)	1	
	<i>Phalacrocorax magellanicus</i>	chick-rearing	3 (1–37)	1 (0–4)	0.01 (0–0.01)	
Procellariidae	<i>Ardenna gravis</i>	incubation	5971 (29–23945)	1544 (7–4350)	6069 (4061–8076)	
	<i>Bulweria bulwerii</i>	chick-rearing	632 (57–2736)	186 (21–551)	278	
	<i>Calonectris borealis</i>	incubation	1954 (30–3571)	426 (9–1092)	744	
	<i>Calonectris borealis</i>	chick-rearing	1010 (16–4319)	353 (8–1990)	949	
	<i>Calonectris diomedea</i>	incubation	246 (12–2397)	83 (6–820)	109 (73–143)	
	<i>Calonectris diomedea</i>	chick-rearing	189 (14–2461)	75 (6–377)	84 (13–99)	
	<i>Calonectris edwardsii</i>	incubation	237 (14–2606)	64 (7–723)	148	
	<i>Calonectris edwardsii</i>	unspec. breeding	1627 (60–3223)	609 (27–775)	339	
	<i>Fulmarus glacialis</i>	chick-rearing	382 (40–1267)	135 (13–494)	75 (27–77)	
	<i>Fulmarus glacialisoides</i>	unspec. breeding	1891 (607–4474)	239 (180–532)	72	
	<i>Macronectes giganteus</i>	incubation	4955 (2062–11621)	1038 (655–2222)	4871	
	<i>Macronectes halli</i>	incubation	1051 (53–8927)	173 (17–2379)	5263	
	<i>Procellaria aequinoctialis</i>	unspec. breeding	2202 (857–5391)	697 (303–2083)	2459	
	<i>Procellaria cinerea</i>	incubation	7930 (2974–10663)	3105 (1311–3761)	4114	
	<i>Pterodroma feae</i>	chick-rearing	1216 (48–3507)	246 (24–772)	485	
	<i>Puffinus boydi</i>	incubation	311 (64–590)	95 (19–228)	18	
	<i>Puffinus puffinus</i>	incubation	1119 (12–4116)	130 (6–821)	224 (116–332)	
	<i>Puffinus puffinus</i>	chick-rearing	190 (11–4908)	50 (5–1219)	76 (37–423)	
	<i>Puffinus yelkouan</i>	chick-rearing	431 (15–1655)	128 (6–447)	81 (70–132)	
	<i>Thalassoica antarctica</i>	unspec. breeding	441 (62–2743)	99 (24–780)	131	

(continued on next page)

Table 2 (continued)

Family	Species	breeding stage	trip distance (km)	max distance from colony (km)	exploited area (1000 km ²)
Spheniscidae	<i>Aptenodytes patagonicus</i>	incubation	1873 (55–4172)	524 (15–1522)	388
	<i>Aptenodytes patagonicus</i>	chick-rearing	709 (328–3850)	216 (112–967)	497 (56–939)
	<i>Eudyptes chrysocome</i>	incubation	606 (75–1238)	201 (37–460)	78 (43–113)
	<i>Eudyptes chrysocome</i>	chick-rearing	137 (32–3746)	42 (13–1863)	78 (65–91)
	<i>Eudyptes chrysocome</i>	unspec. breeding	76 (25–2269)	34 (12–413)	84
	<i>Eudyptes chrysolophus</i>	incubation	191 (30–2396)	74 (15–635)	210
	<i>Eudyptes chrysolophus</i>	chick-rearing	133 (27–3969)	48 (12–1350)	15 (3–231)
	<i>Pygoscelis adeliae</i>	incubation	587 (143–1712)	176 (39–654)	233
	<i>Pygoscelis adeliae</i>	chick-rearing	72 (11–4469)	29 (5–1865)	222 (17–883)
	<i>Pygoscelis antarcticus</i>	chick-rearing	50 (10–1456)	19 (5–261)	6 (1–24)
	<i>Pygoscelis papua</i>	chick-rearing	40 (10–535)	14 (5–64)	0.87 (0.32–2.43)
	<i>Spheniscus magellanicus</i>	chick-rearing	101 (33–1863)	31 (15–930)	8 (7–9)
	<i>Spheniscus magellanicus</i>	unspec. breeding	259 (64–4240)	90 (29–1104)	602
Sulidae	<i>Morus bassanus</i>	chick-rearing	435 (18–1540)	154 (8–425)	89 (32–121)
	<i>Sula dactylatra</i>	incubation	276 (54–1023)	120 (14–341)	77 (13–141)
	<i>Sula dactylatra</i>	chick-rearing	101 (10–548)	35 (5–219)	9 (4–37)
	<i>Sula leucogaster</i>	chick-rearing	121 (10–1314)	38 (5–139)	12 (1–20)
	<i>Sula leucogaster</i>	unspec. breeding	119 (91–140)	52 (30–63)	0.68