

a.

DP1  
groups

PD1group 97:201 39:619  
PD2group 25:248  
OBgroup 49:338

Anchorgroup 41  
Anchorgroup 6:87  
Anchorgroup 8:120  
KHgroup 21:173 16:220  
KHgroup 74:215  
Anchorgroup 21:283

Accessory-1group 09:323  
Accessory-1group 02:437  
Accessory-1group 43:538  
Accessory-1group 39:648  
Accessory-1group 1011:1039

DP2  
groups

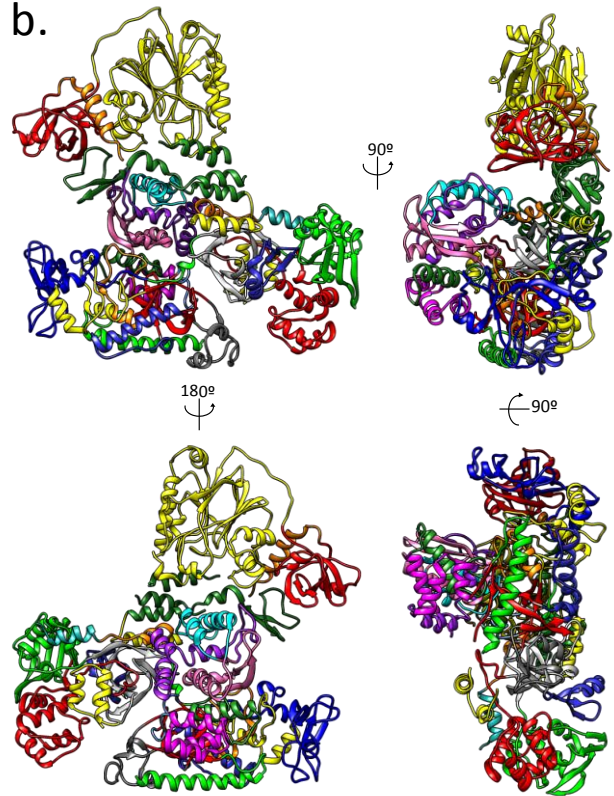
DPBB-1group 45:401 38:442 49:657  
Clamp-1group 24:338  
Clamp-1group 074:1095  
Clamp-1group 1096:1195 1273(Zn-III)

DPBB-2group 2:45 23:829 872:876  
+ 15:943 59:964 89:997

DPBB-2analytic loop group 44:958  
Clamp-2group 58:667  
Clamp-2group 68:766 1271:1272 (Zn-I and Zn-II)  
Clamp-2group 77:822  
Clamp-2group 65:988

Accessory-2group 30:871  
Accessory-2group 77:914

b.



S6 Figure