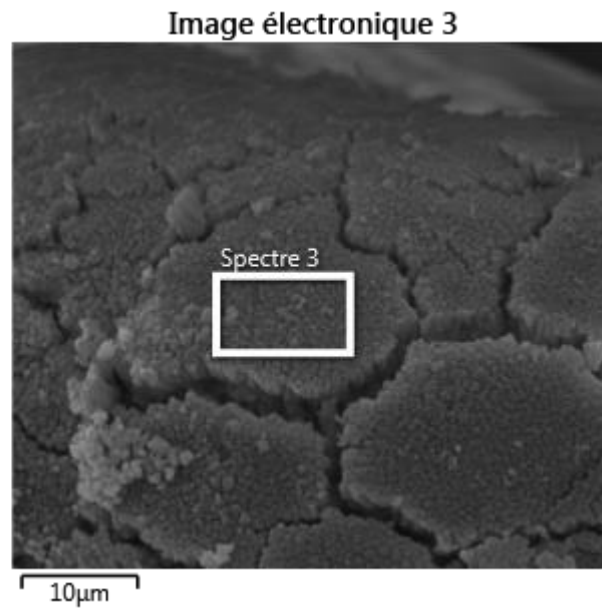
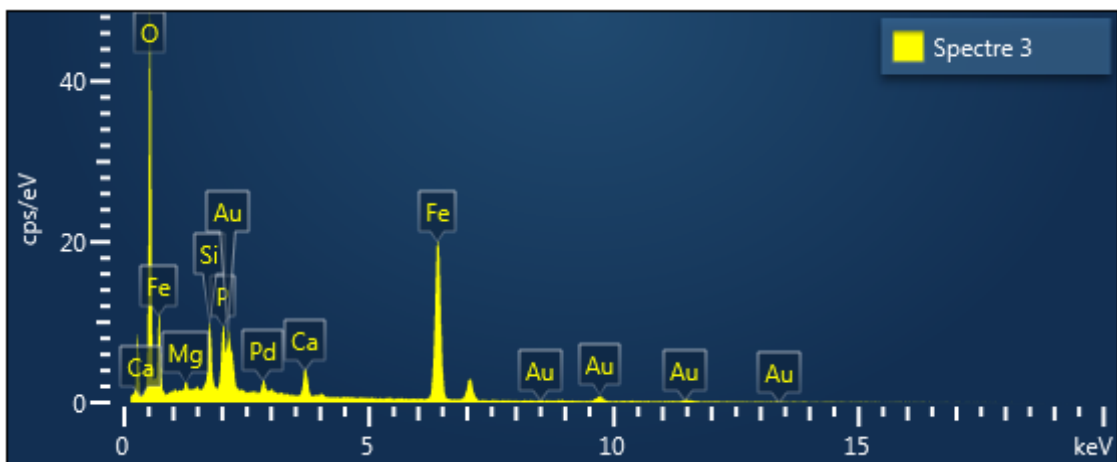


A) BIC-PL10-Peris3-Rimi8: Late stage egg

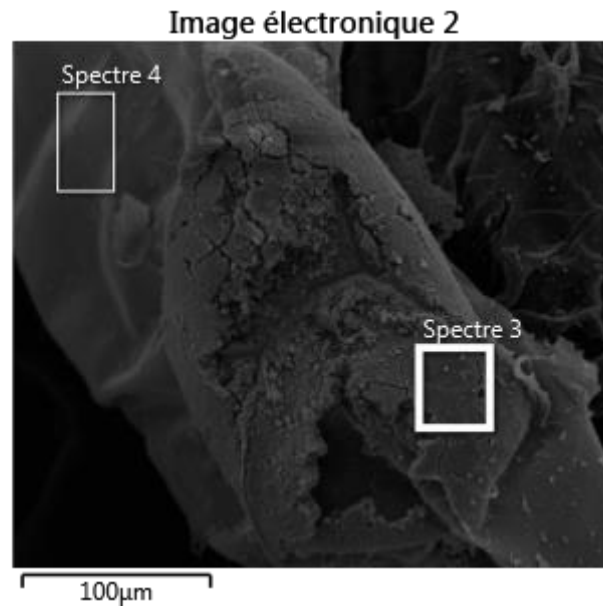


SEM image analyzed by EDX

Spectre 3: Mineral crust area analyzed for this egg

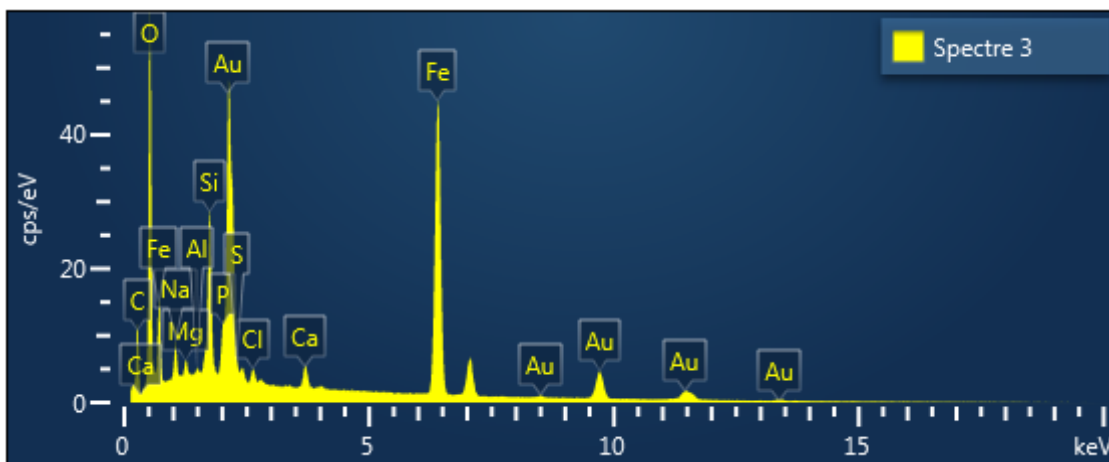


B) BIC-PL08-Peris1-R1: Late stage egg

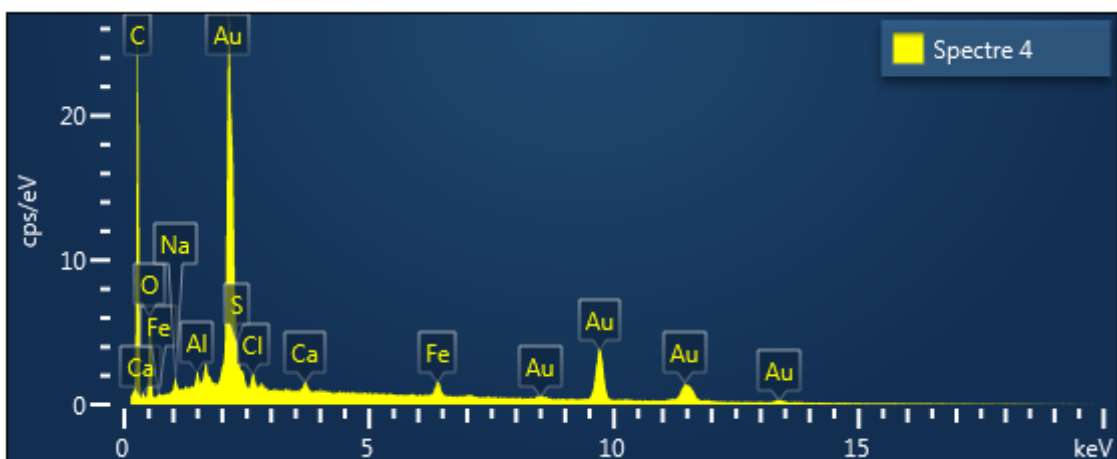


SEM image analyzed by EDX

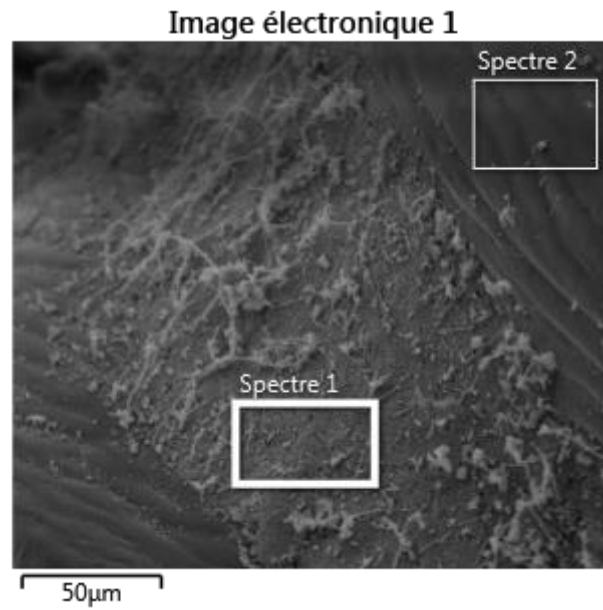
Spectre 3: Mineral crust area analyzed for this egg



Spectre 4: Bare egg envelope area analyzed for this egg as control

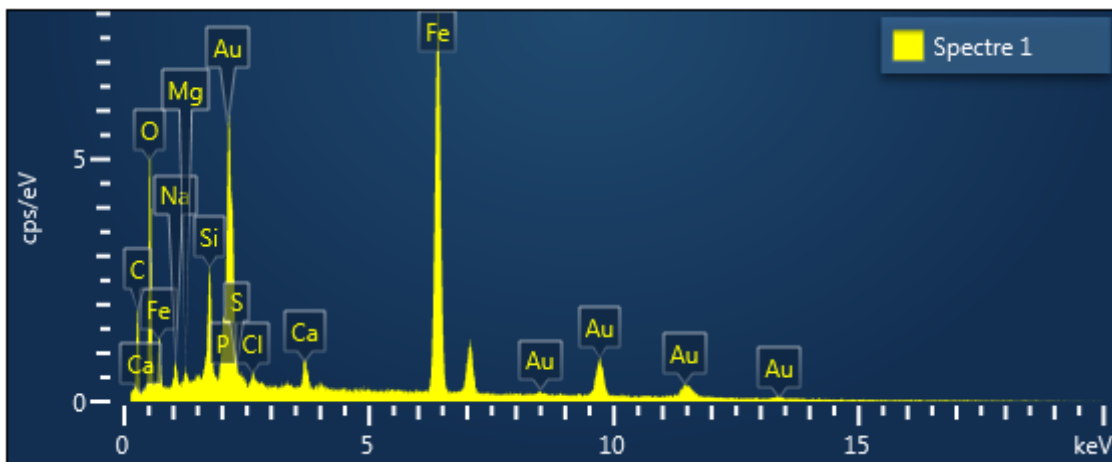


C) BIC-PL08-Peris1-R1: Late stage pleopod

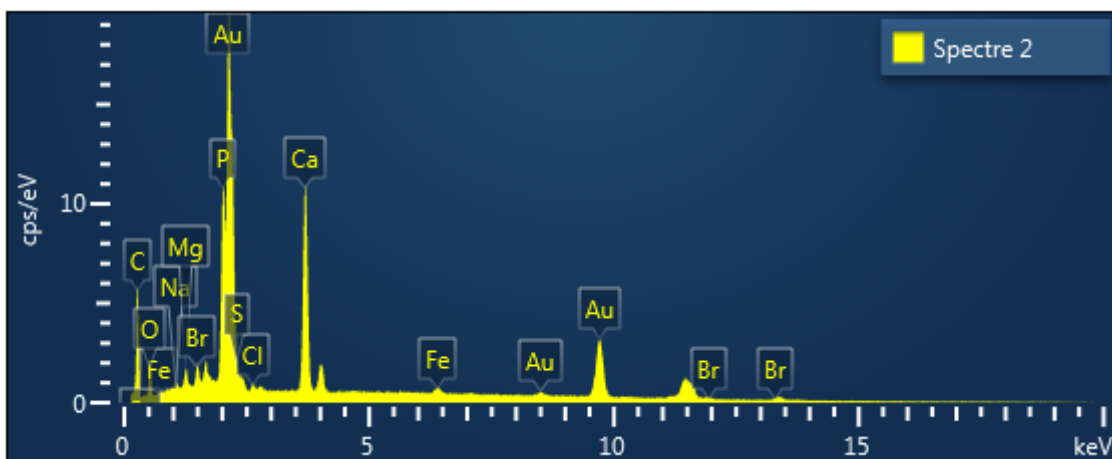


SEM image analyzed by EDX

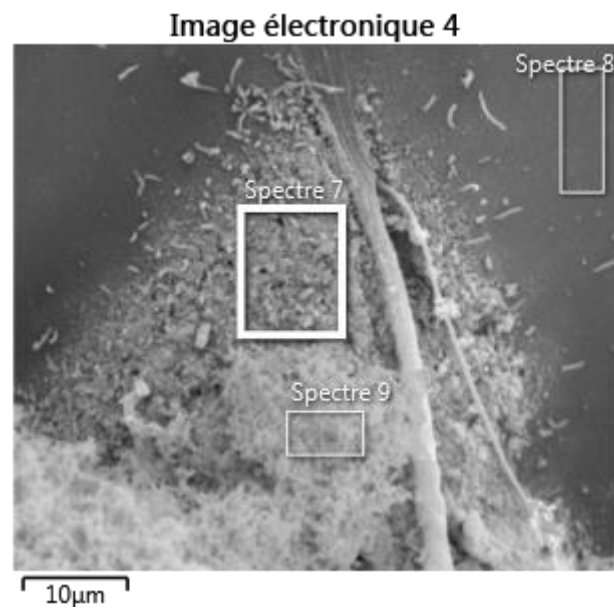
Spectre 1: Mineral crust area analyzed for this pleopod



Spectre 2: Bare pleopod surface area analyzed for this pleopod as control

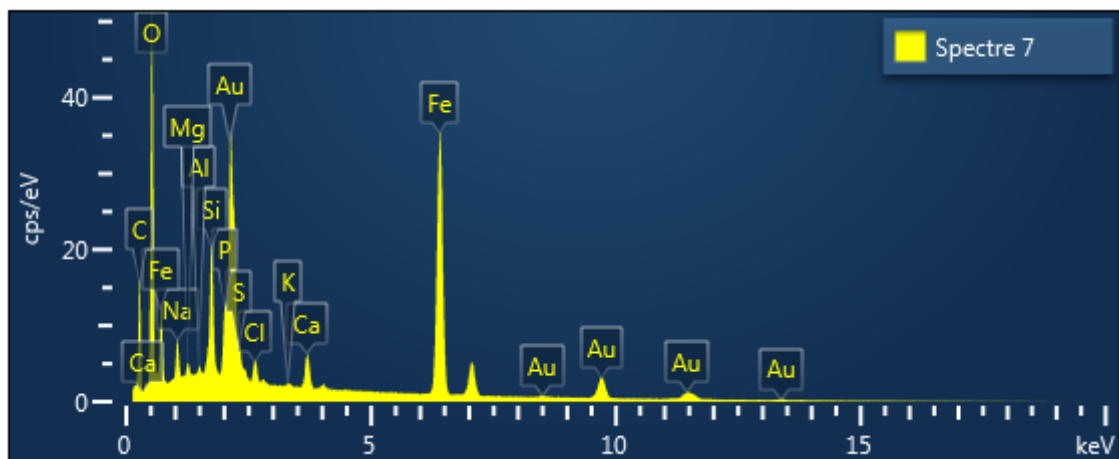


D) BIC-PL12-Peris3-R5: Mid stage egg

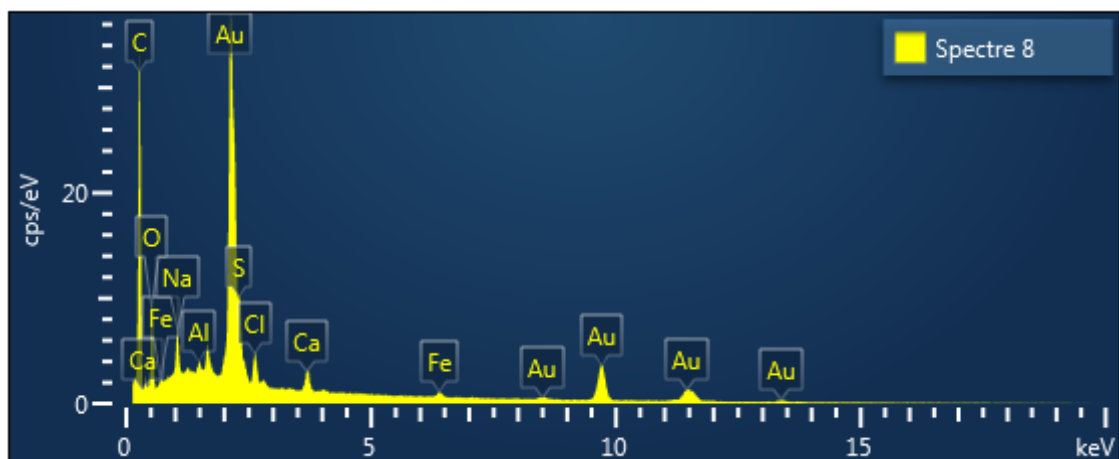


SEM image analyzed by EDX

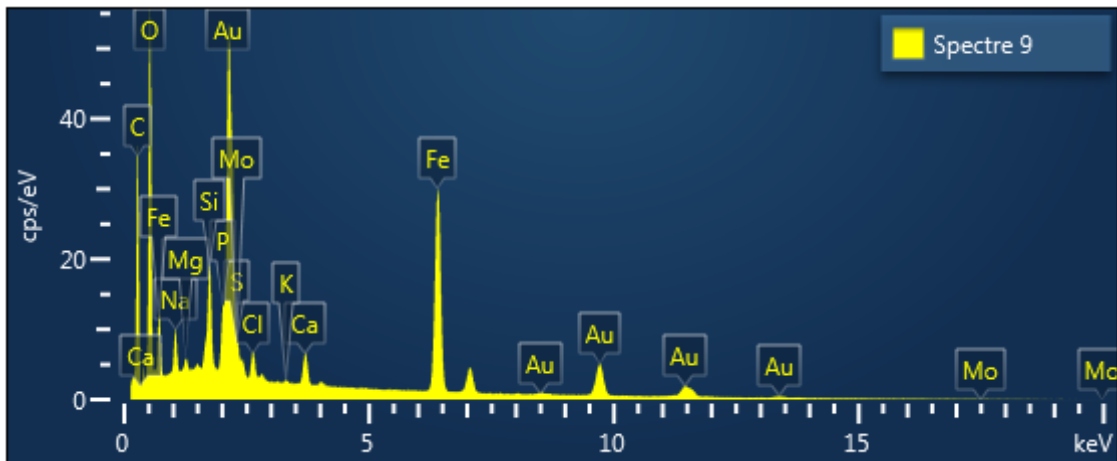
Spectre 7: Mineral deposit area analyzed for this egg



Spectre 8: Bare egg envelope area analyzed for this egg as control

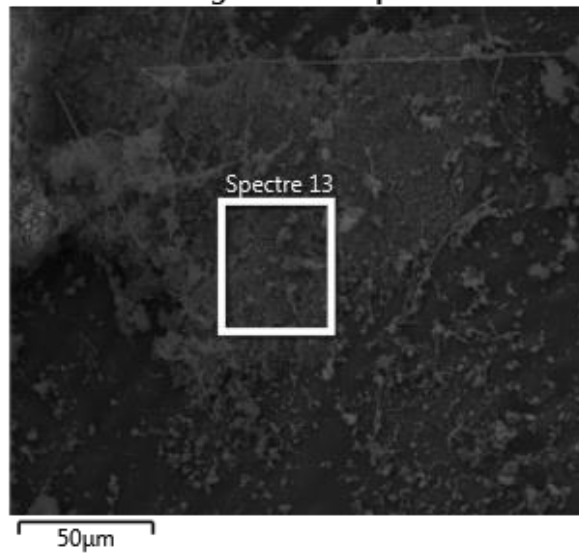


Spectre 9: Additional mineral deposits area analyzed for this egg



E) BIC-PL12-Peris3-R5: Mid stage pleopod

Image électronique 7



SEM image analyzed by EDX

Spectre 13: Mineral crust area analyzed for this pleopod

