

Tectonics

Supporting Information for

Geology of the Ionian Basin and margins: a key to the East Mediterranean geodynamics

J. Tugend^{1†}, N. Chamot-Rooke¹, S. Arsenikos¹, C. Blanpied² and D. Frizon de Lamotte³

¹Laboratoire de Géologie, CNRS UMR 8538, Ecole normale supérieure, PSL Research University, 24 rue Lhomond, Paris 75005, France

²Sorbonne Université, CNRS-INSU, Institut des Sciences de la Terre Paris, ITeP UMR 7193, F-75005 Paris, France

³Département Géosciences et Environnement, Université Cergy-Pontoise, 5 mail Gay Lussac, Neuville-sur-Oise, 95 031 Cergy-Pontoise Cedex, France

Contents of this file

Table S1: Acquisition Parameters of ARCHIMEDE, IMERSE and PASIPHAE Seismic Surveys

Figure S1: ARCHIMEDE 31 seismic profile

Introduction

This supporting information file contains a summary of the acquisition parameters of the ARCHIMEDE, IMERSE and PASIPHAE seismic surveys as well as the uninterpreted ARCHIMEDE 31 seismic profile.

	ARCHIMEDE survey	IMERSE survey	Two ship PASIPHAE cruise
General Information			
Area	Ionian and Sirt abyssal plains, Calabrian Wedge, Medina Seamounts	Mediterranean Ridge	Calabrian and Mediterranean Ridges
Number of profiles	35	18	14
Vessel	R/V "Le Nadir"	N/O "Explora"	R/V "Jean Charcot" and R/V "Le Noroit"
Date	April 1997	August-September 1994	November-December 1988
Energy source			
Type	10 airguns (single-bubble mode)	32 airguns	6 airguns
Total volume	1975 cu.in (35L)	4880 cu.in (80L)	5900 cu.in (16L)
Source depth	20 m	8-10 m	15-20 m
Cable configuration			
Streamer length	2400 m	4500 m	2400 m
Near offset	350 m	/	/
Far offset	2725 m	/	/
Total number of channels	104	180	96
Auxiliary channels	8	/	/
Number of seismic channels	96	/	/
Spacing between hydrophones	25 m	25	/
Shotpoint interval	50 m	50 m	1 shot/min
Maximum fold coverage	24	45	8
CDP spacing	12.5 m	12.5 m	/
Instrumentation			
Recording system	Sercel SN 358 DMX	/	Sercel SN 338
Format	SEG-D Demultiplexed	/	/
Trace Format data	FOR8015	/	/
Sample rate	4 ms (250 Hz)	4 ms	4 ms
Recorded length	17 s	16 s	24s
Filtering	0-77 Hz	/	/

Table S1: Acquisition Parameters of ARCHIMEDE, IMERSE and PASIPHAE Seismic Surveys

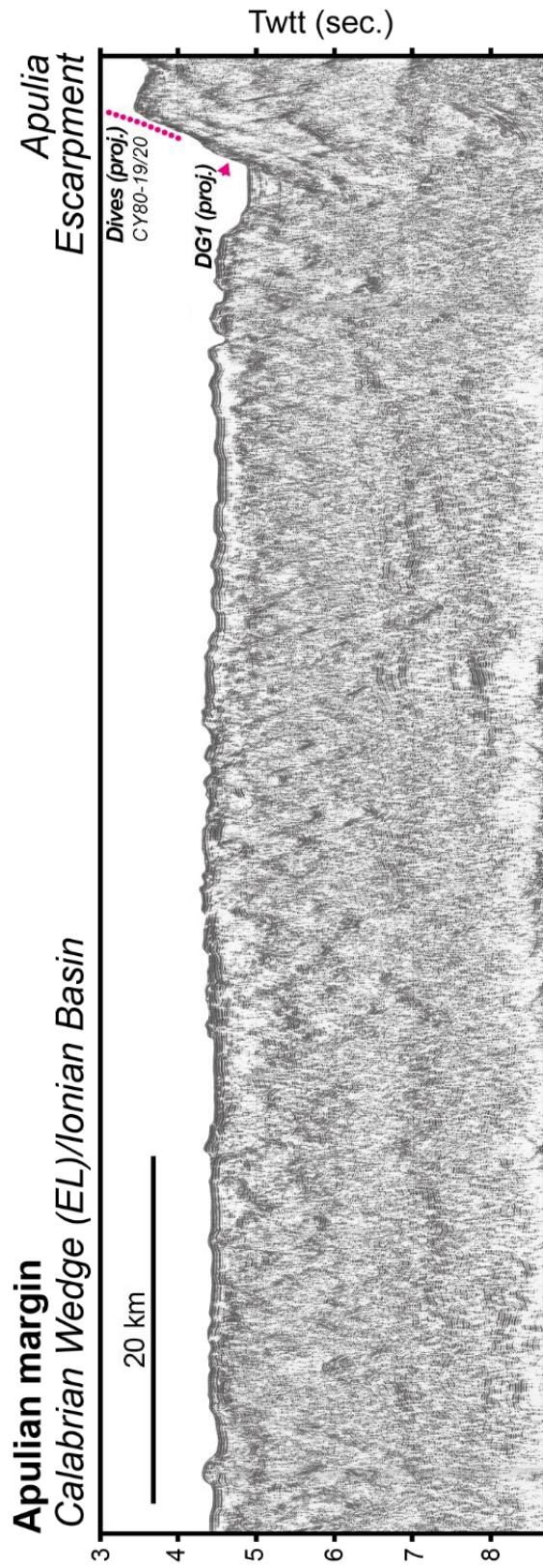


Figure S1: ARCHIMEDE 31 seismic profile