

Supplement 6.

Fig. S.6.1. Median population Multidimensional Individual Specialisation Index (MISI) values for Antarctic petrels during incubation (left) and chick-rearing (right), tested for individual specialisation in site fidelity (top) and individual environmental space (below). Comparison between the null model (histograms; blue dotted lines represent the 95 % confidence intervals) and the empirical values (vertical red lines).

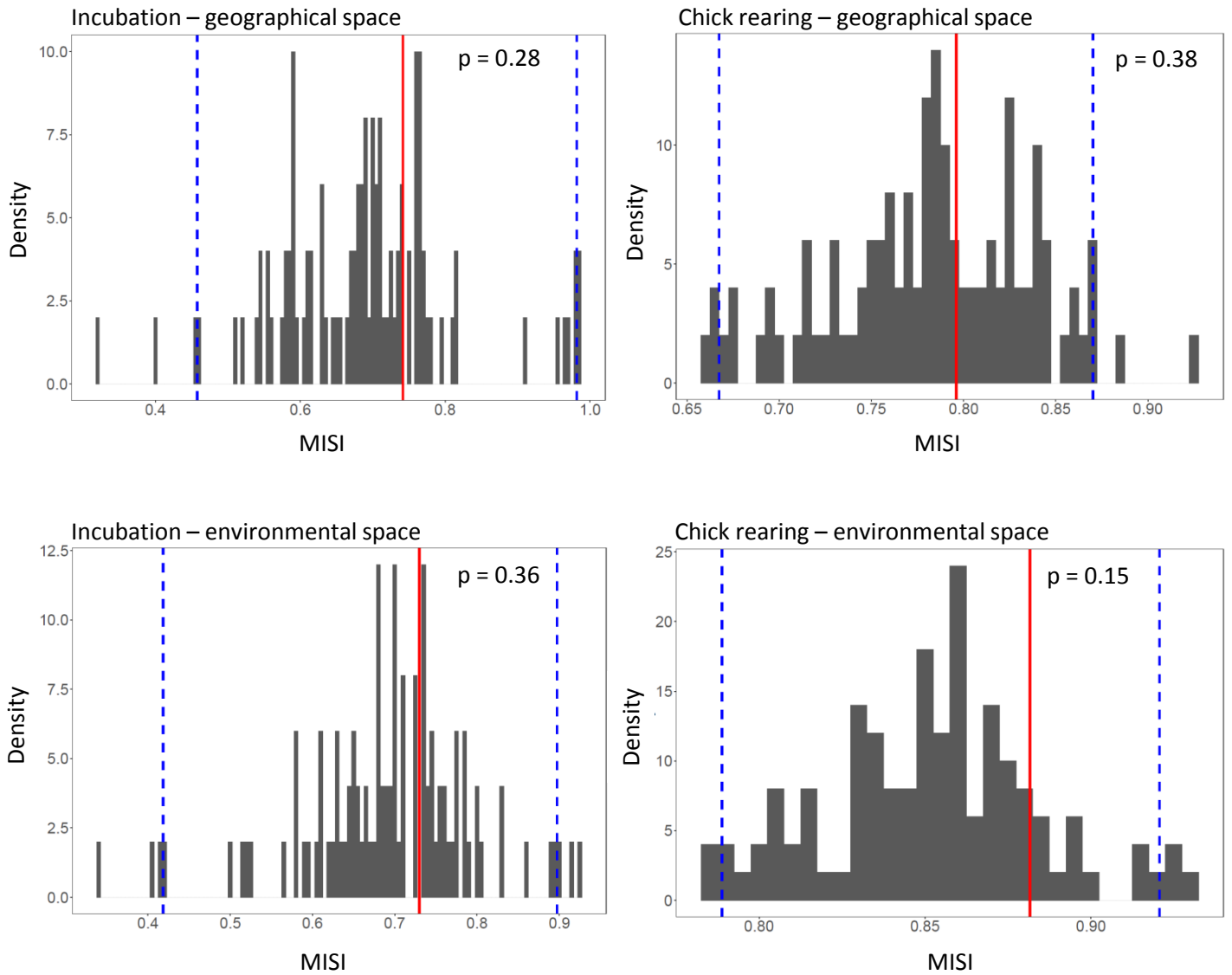


Fig. S.6.2. Median population MISI values for Cape petrels during incubation (left) and chick-rearing (right), tested for individual specialisation in site fidelity (top) and individual environmental space (below). Comparison between the null model (histograms; blue dotted lines represent the 95 % confidence intervals) and the empirical values (vertical red lines).

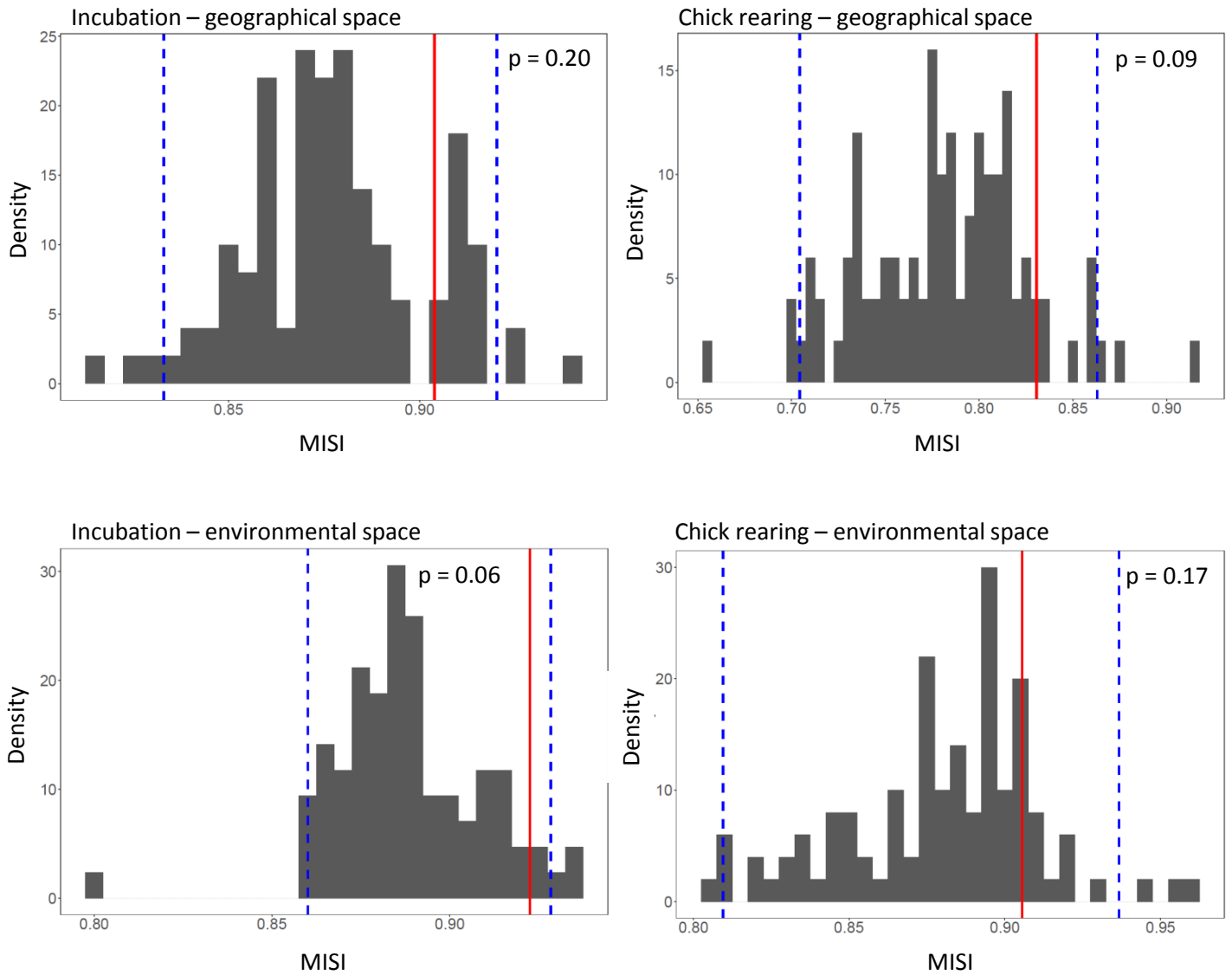


Fig. S.6.3. Median population MISI values for southern fulmars during incubation (left) and chick-rearing (right), tested for individual specialisation in site fidelity (top) and individual environmental space (below). Comparison between the null model (histograms; blue dotted lines represent the 95 % confidence intervals) and the empirical values (vertical red lines).

