

Supporting Information for ”Mesoscale and submesoscale processes in the southeast Atlantic and their impact on the regional thermohaline structure.”

T. A. Capuano,¹ S. Speich,² , X. Carton¹ and Bruno Blanke¹

1. Figures S1 and S2.

2. Caption for Movies S1 (File uploaded separately): animation of zonal sections of Potential Vorticity (PV) and vertical velocity (W), extracted at each timestep (daily) from spring- Y4M10- to the next summer- Y5M1- within the domain of our HR simulation.

Introduction

This supporting information provides two figures and one animation which are described in the main article.

Corresponding author: S. Speich Laboratoire de Meteorologie Dynamique, LMD-IPSL, Ecole Normale Supérieure, Paris, France (speich@lmd.ens.fr)

¹Laboratoire d’Océanographie Physique et Spatiale, LOPS-UBO, Brest.

²Laboratoire de Meteorologie Dynamique, LMD-IPSL, Ecole Normale Supérieure, Paris, France.

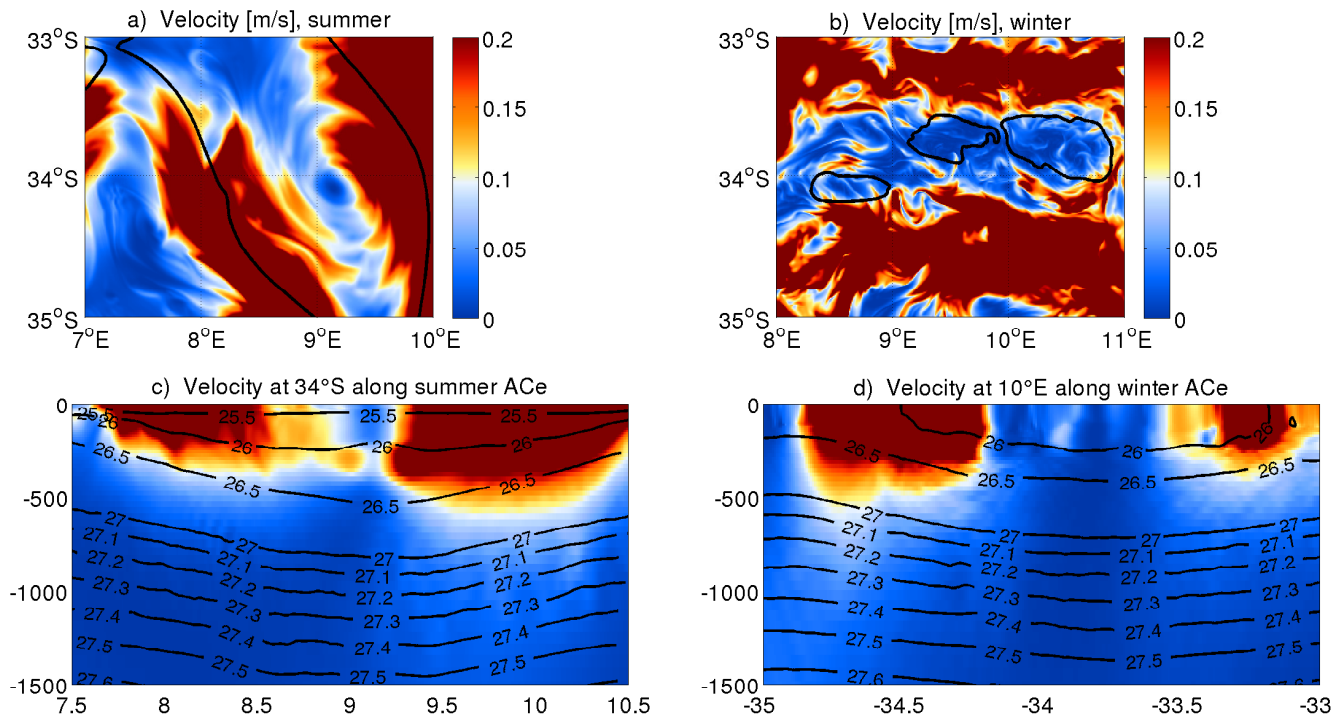


Figure S1. Seasonal maps and sections of the horizontal velocity (u^2+v^2) within the HR simulation, correspondent to the energy transfers plots of Figure 6.

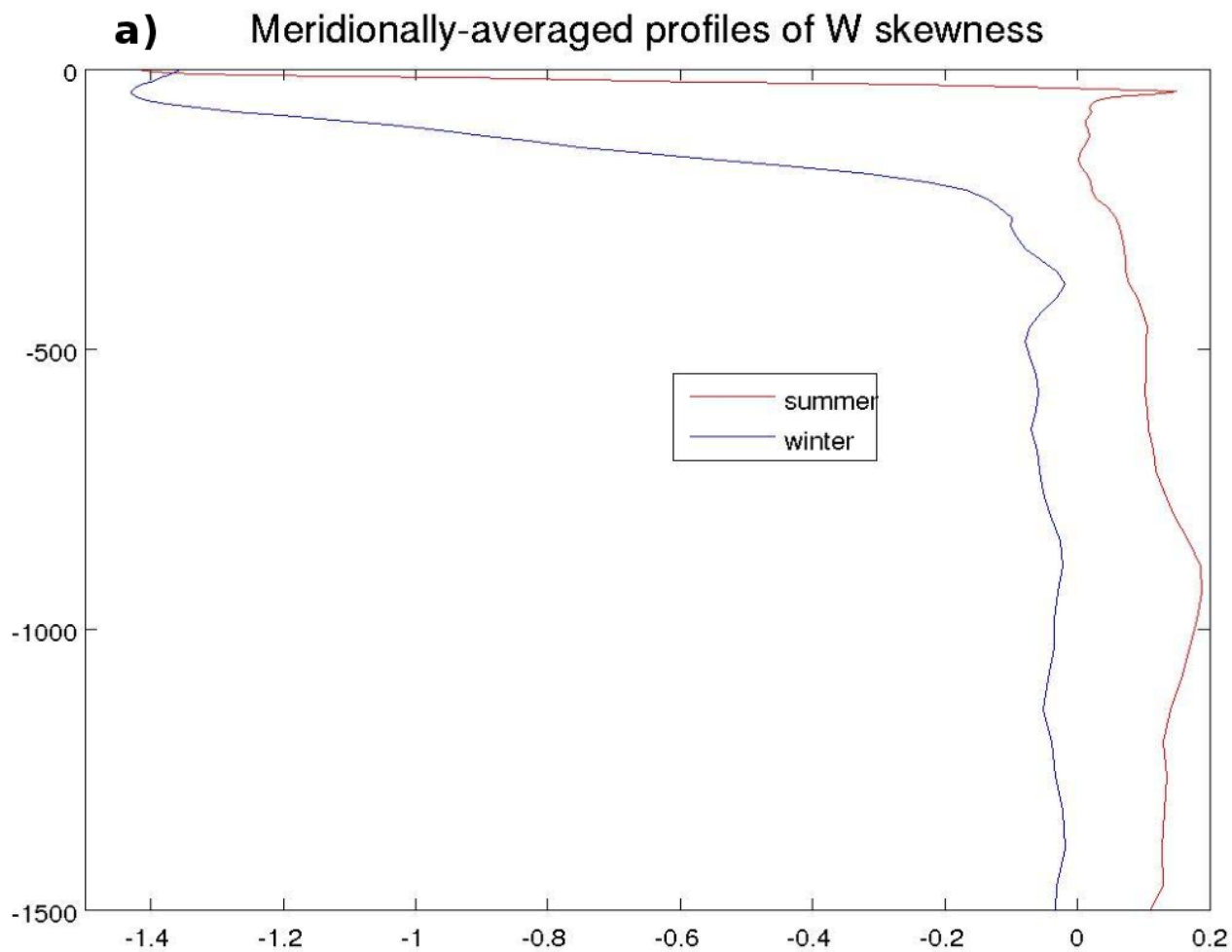


Figure S2. Meridionally and temporally averaged profiles of the skewness of vertical velocity (W , [m/d]), for the summer (in red) and the winter (in blue) seasons, within the HR simulation.