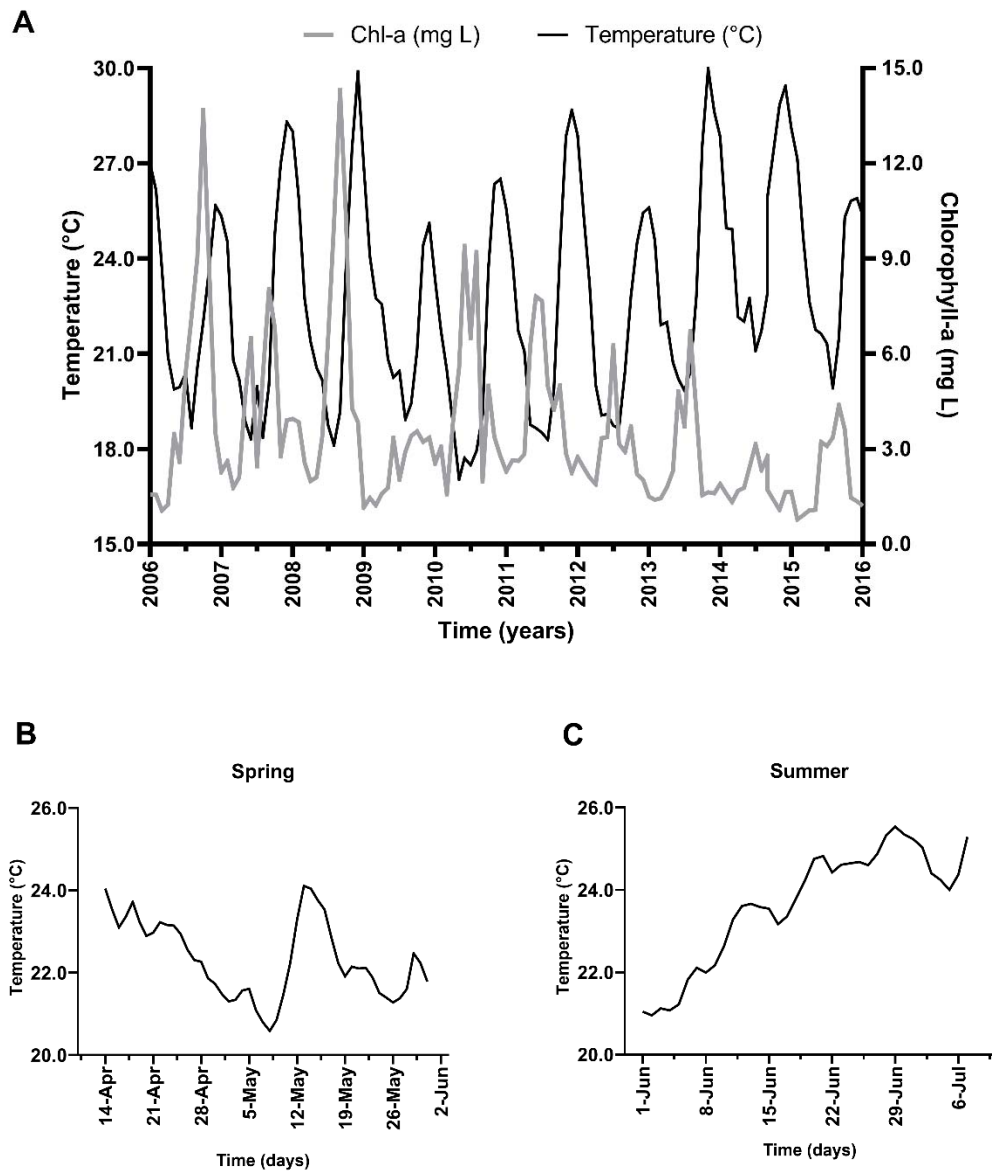


Metabolic responses of adult lion's paw scallops (*Nodipecten subnodosus*) exposed to acute hyperthermia in relation to seasonal reproductive effort

Salgado-García, Rosa L.^{1,2}, Kraffe, Edouard³, Maytorena-Verdugo, Claudia I.², Rivera-Camacho, Alma R.¹, Sicard, M. Teresa², Arellano-Martínez, Marcial¹, Racotta, Ilie S.^{2*}.



Supplementary Figure 1. Water temperature data and Chlorophyll-a in the Magdalena Bay lagoon. A. Superficial water temperature (°C) and chlorophyll a (mg L) from October 2006 to October 2016. B. Temperature data base registered daily in spring (April-May 2016) and C. summer (June-July 2016) in culture site of *N. subnodosus* in Magdalena Bay Lagoon.