

May 2017: Malaria outbreak due to *Plasmodium vivax* at the border between French Guiana and Brazil

Investigation

Seasonality and comparison of the border area between French Guiana and Brazil

- Seasonal variation
- Peak in novembre 2017
- Same profil on both side of the border



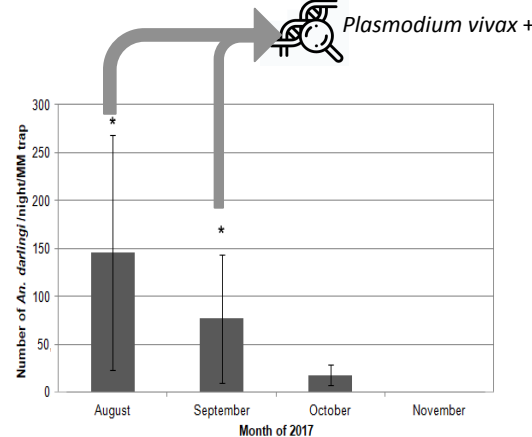
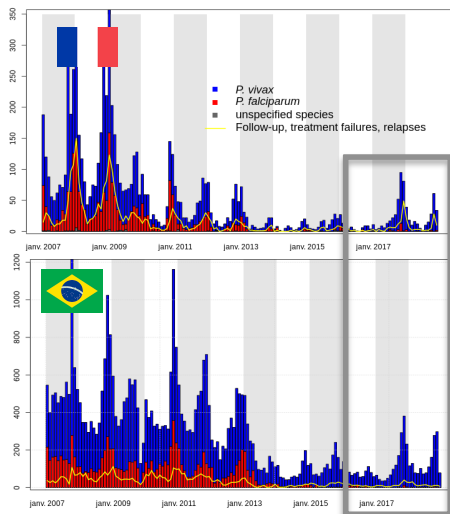
Entomological findings

- *Anopheles darlingi*
- Peak in August
- Positive in PCR for *Plasmodium vivax*

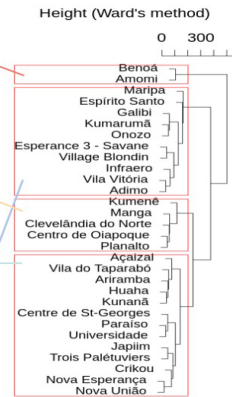
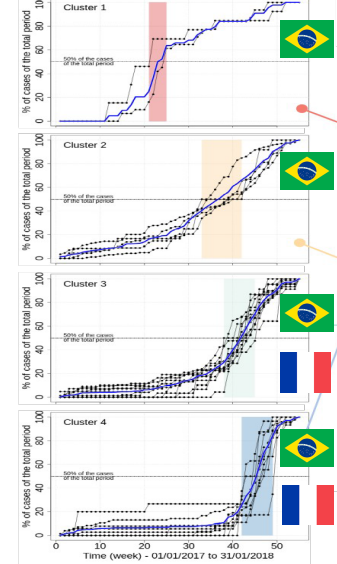


Epidemic profile analysis

- 4 different clusters
- Onset of the epidemic in Native Indians brazilians villages



Normalized cumulative case number (%)



Plasmodium vivax +