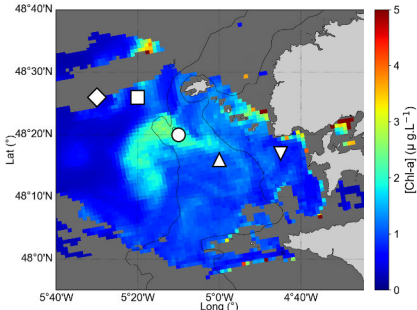
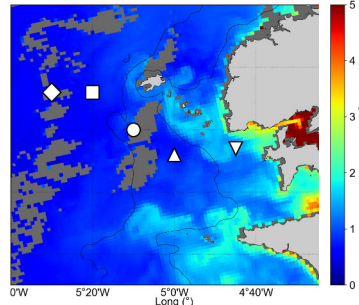


## B. Satellite surface Chla measurements

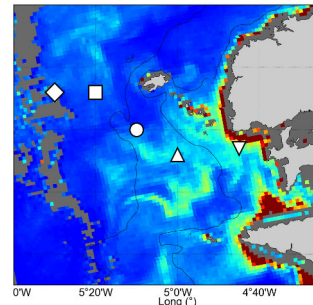
September 2014



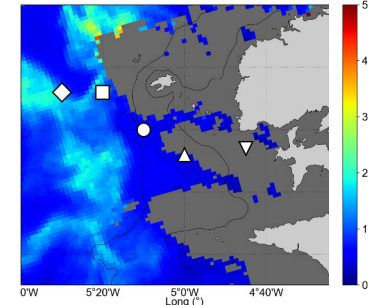
March 2015



July 2015

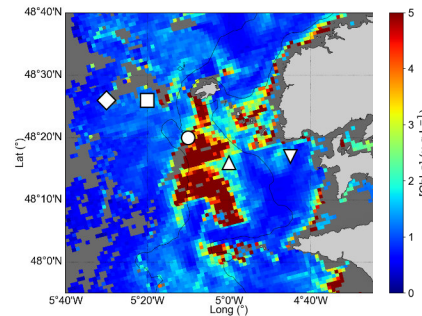


September 2015



Map of the satellite sea surface chlorophyll measurements in the Iroise Sea for each crew. September 2014 the 8th, March 2015 the 5th, July 2015 the 2nd and September 2015 the 8th.

27th of June 2015



Station

- ▽ Station 1
- △ Station 2
- Station 3
- Station 4
- ◇ Station 5