

Supplementary Material

Data availability in the applied framework

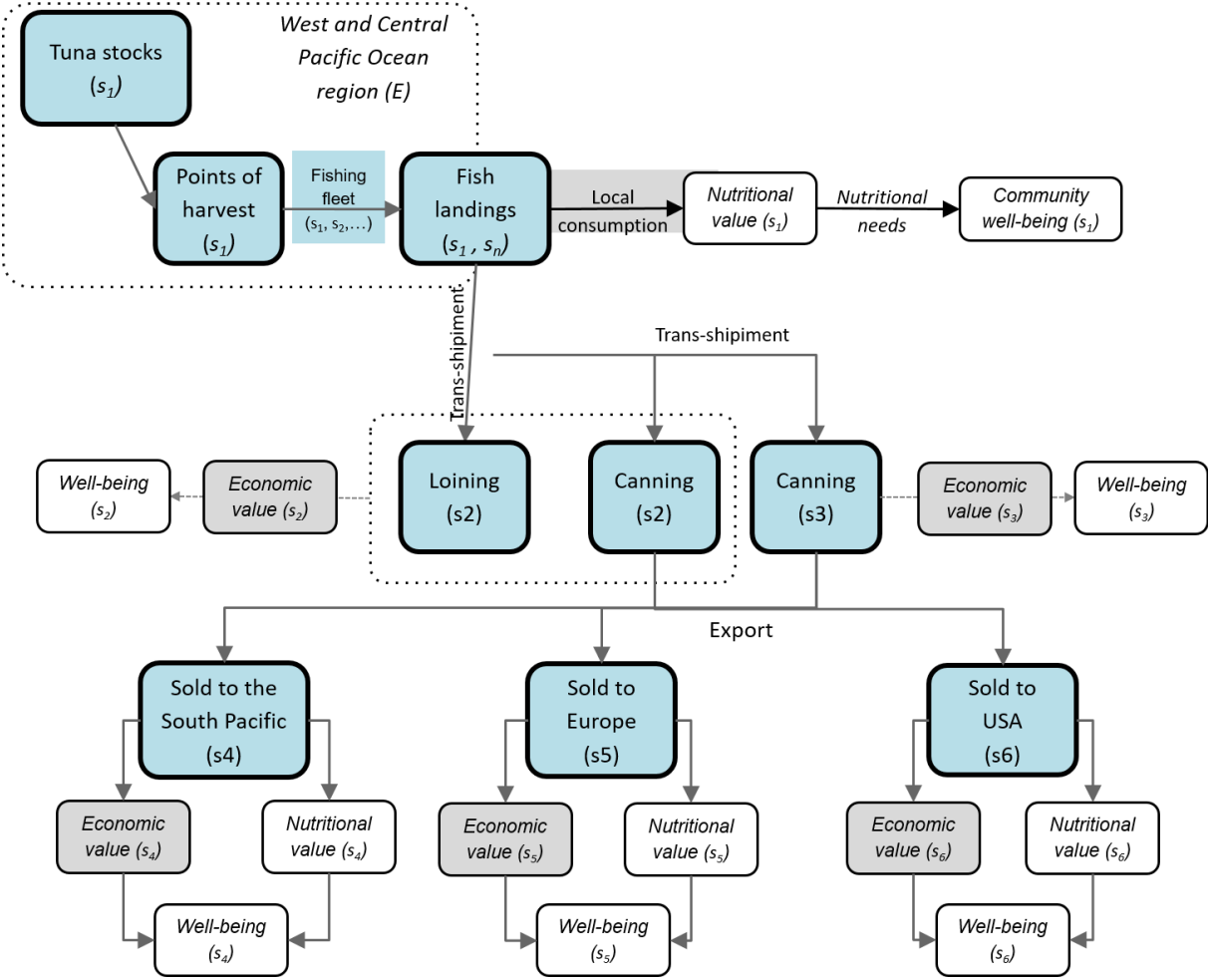


Figure 1. Illustration of the WCPO tuna fishery as assessed in this study. The colour code indicates the data availability for the applied framework. Light blue indicates the parts of the framework for which data was available and used. Grey indicates areas for which data was available but not homogeneous for all the countries considered or was available but for a different time frame compared to the rest of the data, henceforth not used in the analysis. White indicates areas for which data was not found. Detailed information on the data used is given in Table 1 of the Supplementary material.

Table 1. Data availability in the applied case study. The table gives information on the framework components for which data was fully or partially available, i.e. the light blue and grey components in Figure 1.

ID	Framework component	Indicator description	Unit	Data source	Year	Extent
1	Tuna stocks <i>(not used in the analysis)</i>	Fish stocks	Metric tons	Forum Fisheries Agency (FFA)	2015	WCPO
2	Points of harvest	Maps of fish harvest	Indication of harvest locations	FFA	2015	WCPO
3	Fishing fleet origin	Maps of fleet origin	% of fleet origin in the WCPO region	Pacific Possible. The World Bank	1997-2015	Global
4	Fish landings	Fish catch per species by purse seine fleet	Tons/fleet/species	Adapted from Williams & Terawasi (2015)	1997-2015	WCPO region
5	Loining	Metric tons processed per country	%	Pacific Possible. The World Bank	1997-2015	Global
6	Canning	Metric tons canned per country	%	Pacific Possible. The World Bank	1997-2015	Global
7	Sold to South Pacific	No of millions of tuna cases sold converted in whole round weight equivalent (in metric tons)	%	Pacific Possible. The World Bank	1997-2015	Global
8	Sold to Europe	No of millions of tuna cases sold converted in whole round weight equivalent (in metric tons)	%	Pacific Possible. The World Bank	1997-2015	Global
9	Sold to USA	No of millions of tuna cases sold converted in whole round weight equivalent (in metric tons)	%	Pacific Possible. The World Bank	1997-2015	Global
10	Jobs created by canning and loining industry	No of jobs created per country	Number	Pacific Possible. The World Bank	2010	Pacific Island countries