

Paleogene V-shaped basins and Neogene subsidence of the Northern Lesser Antilles Forearc

Boucard M.¹⁻², Marcaillou B.², Lebrun J.-F.¹, Laurencin M.³, Klingelhoefer, F.⁴, Laigle, M.², Lallemand, S.⁵, Schenini L.², Graindorge D.³, Cornée J.-J.¹⁻⁵, Münch, P.⁵, Philippon M.¹, and the ANTITHESIS 1, 3 and GARANTI Scientific Teams.

1 Géosciences Montpellier, Université des Antilles, Université de Montpellier, CNRS, Campus de Fouillole, Pointe-à-Pitre, Guadeloupe (FWI), France.

2 Université Côte d'Azur, CNRS, IRD, Observatoire de la Côte d'Azur, Geoazur, 250 Avenue Albert Einstein, 06560 Valbonne, France.

3 Laboratoire Géosciences Océan, CNRS-UBO-UBS, Université Bretagne Pays de Loire (UBL), Brest, Institut Universitaire Européen de la Mer, rue Dumont Durville, F-29280, Plouzané, France.

4 Géosciences Marines, Ifremer, ZI de la Pointe de Diable, CS 10070, 29280 Plouzané France.

5 Géosciences Montpellier, Université de Montpellier, CNRS, Université des Antilles, Place Eugène Bataillon, 34095 Montpellier, France.

Contents of this file

Figures S1 to S5

Introduction

This supporting information file include every un-interpreted Multichannel Seismic Lines presented in the paper. These lines were acquired during Antithesis I and III and processed as described in the paper, section 3.1.

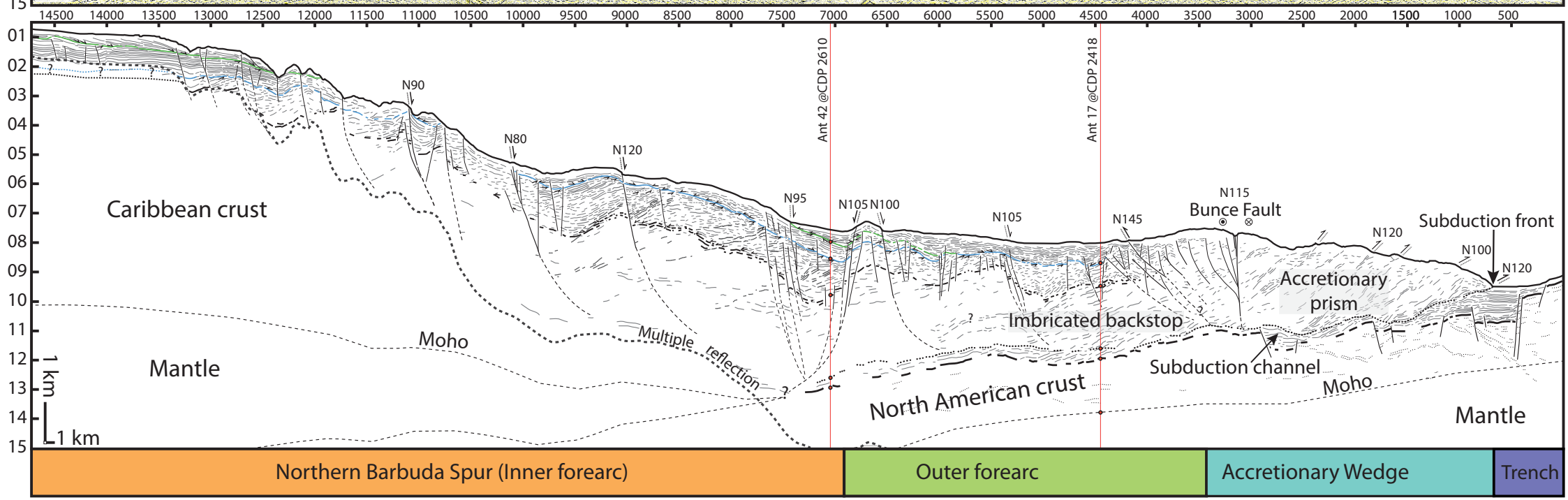
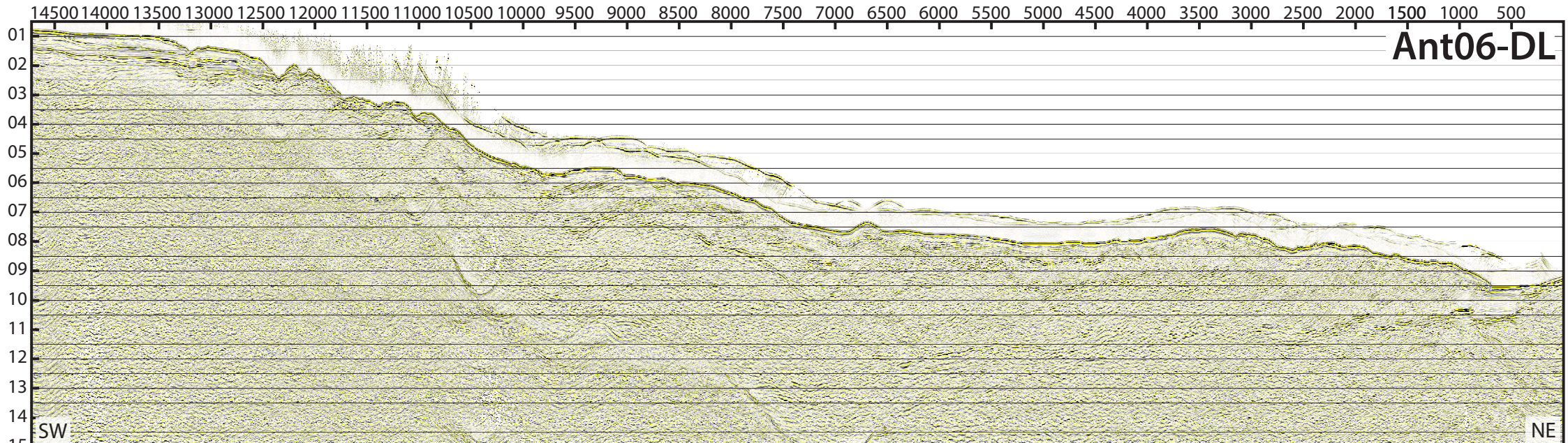
Figure Legend

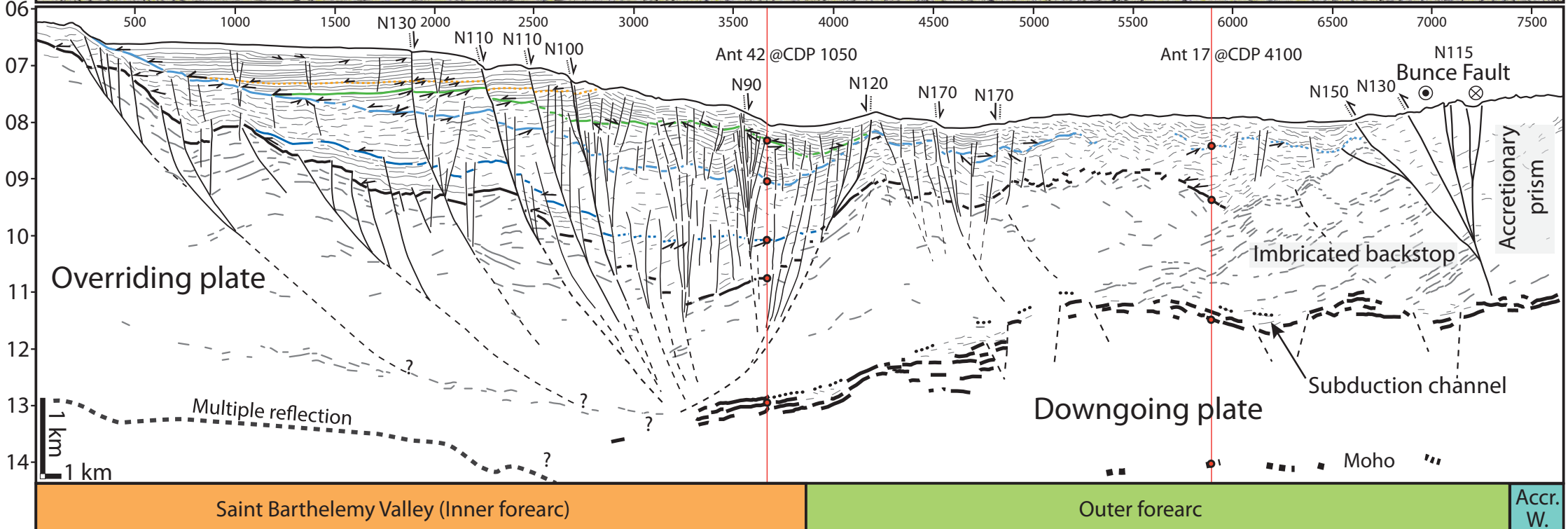
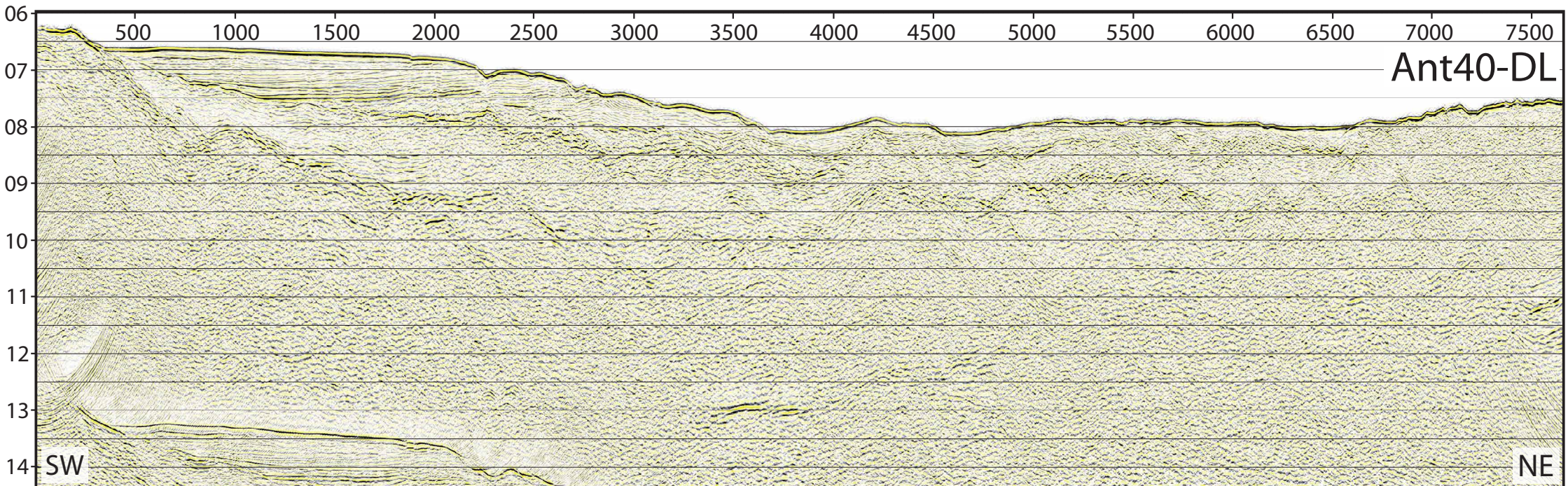
S1: Along-dip seismic line ANT06 (time cross section) and interpretation. See Figure 3 for location.

S2: Along-dip seismic line ANT40 (time cross section) and interpretation. See Figure 3 for location.

S3: Along-dip seismic line ANT14 (time cross section) and interpretation. See Figure 3 for location.

S4: Along-strike seismic line ANT38.2-42 (time cross section) and interpretation. See Figure 3 for location.





Line Ant 14

