

Appendix S1:

Main article: Djeghri, N., P. Pondaven, M. Stockenreiter, S. Behl, J.Y.T. Huang, T. Hansen, S. Patris, G. Ucharm, H. Stibor. Isotopic and elemental compositions reveal density-dependent nutrition pathways in a population of mixotrophic jellyfish. *Ecosphere*.

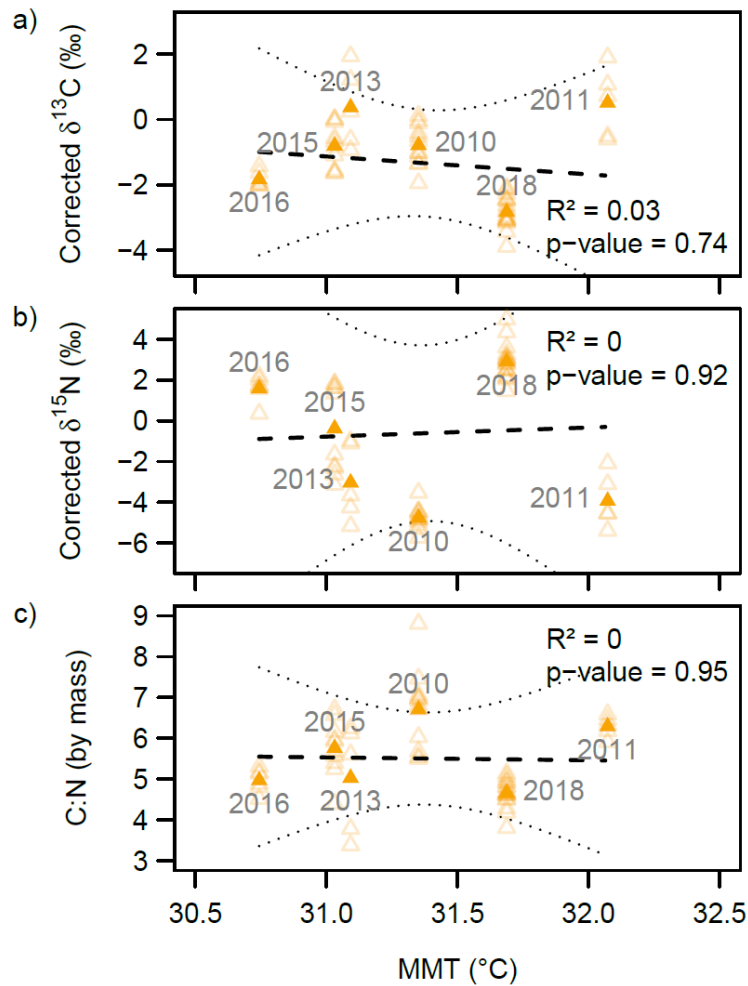


Fig. S1 Relationship between corrected $\delta^{13}\text{C}$ (a), corrected $\delta^{15}\text{N}$ (b) and mass C:N ratios (c) of *Mastigias papua etpisoni* holobiont and mean mixolimnion temperature (MMT, °C) in Ongeim'1 Tketau across different sampling years. Regressions have been performed on the weighted means of each year (weighted by the number of medusae sampled; $n = 12, 5, 5, 10, 6$ and 18 for respectively 2010, 2011, 2013, 2015, 2016 and 2018). Empty symbols are the individual data from each year; full symbols are the means of each sampling event. Dotted lines are 95 % C. I. around regressions.