

Genetic relations between the Aves Ridge and the Grenada back-arc basin, East Caribbean Sea

Clément Garrocq¹, Serge Lallemand¹, Boris Marcaillou², Jean-Frédéric Lebrun³, Crelia Padron^{4,5}, Frauke Klingelhofer⁵, Mireille Laigle², Philippe Münch¹, Aurélien Gay¹, Laure Schenini², Marie-Odile Beslier², Jean-Jacques Cornée¹, Bernard Mercier de Lépinay², Frédéric Quillévéré⁶, Marcelle BouDagher-Fadel⁷ and the GARANTI cruise team

¹ Géosciences Montpellier, CNRS, Université de Montpellier, Université des Antilles, Place Eugène Bataillon, 34095 Montpellier, France

² Géoazur, Université Côte d'Azur, CNRS, IRD, Observatoire de la Côte d'Azur, Géoazur, 250 Avenue Albert Einstein, 06560 Valbonne, France

³ Géosciences Montpellier, Université des Antilles, CNRS, Université de Montpellier, Campus de Fouillole, Pointe-à-Pitre, Guadeloupe, France

⁴ Departamento de Ciencias de la Tierra, Universidad Simón Bolívar (USB), Caracas, Venezuela.

⁵ Géosciences Marines, Ifremer, ZI de la Pointe du Diable, CS 10070, 29280 Plouzané, France

⁶ Université de Lyon, Université Claude Bernard Lyon 1, LGLTPE, CNRS, Bd du 11 Novembre 1918, 69622 Villeurbanne, France

⁷ Office of the Vice-Provost (research), University College London, 2 Taviton street, London WC1h 0BT, UK

Contents of this file

Figures S1 to S5

Additional Supporting Information (Files uploaded separately)

Data Set S1 (ds01.zip)

31 **Introduction**

32 This supporting information includes five figures providing more details about our
33 seismic calibration. The first four figures (S1 to S4) show the well-seismic ties and
34 horizon propagation. Figure S5 is a comparison between the seismic units described in
35 our article and the megasequences previously defined by Aitken et al. (2011) in the
36 southern Grenada Basin. Seismic lines cited in the article but not shown (GA01, GA25C,
37 GA26A, GA26B, GA28A) are provided with an A0 location map in a separate zip file
38 (ds01.zip).

39

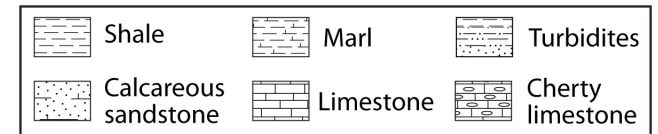
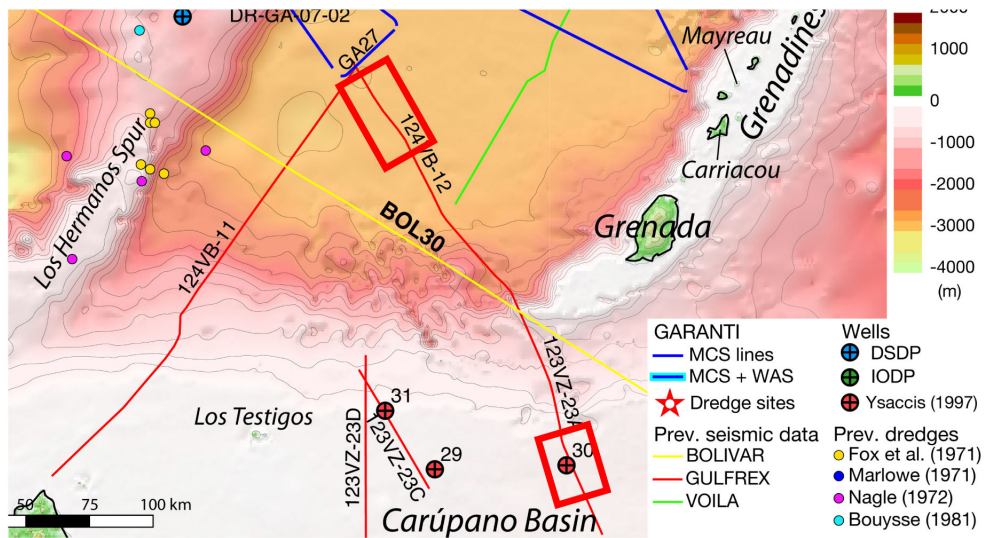
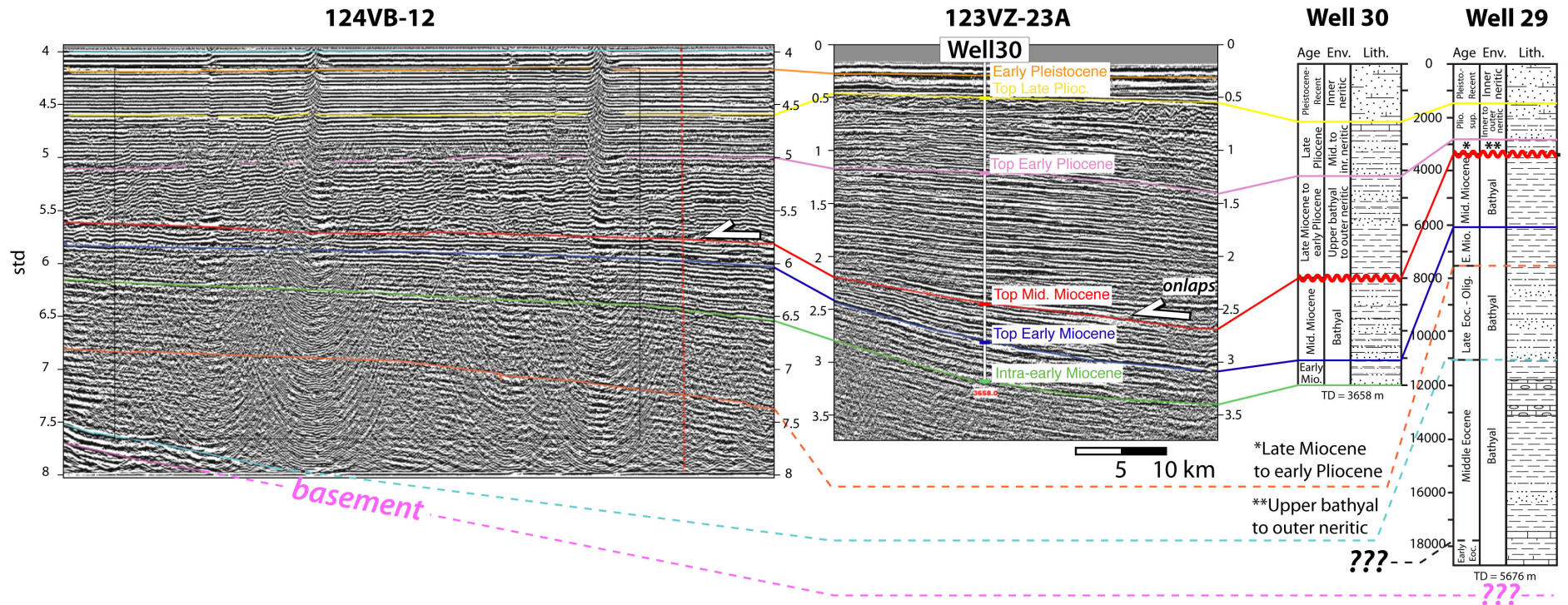
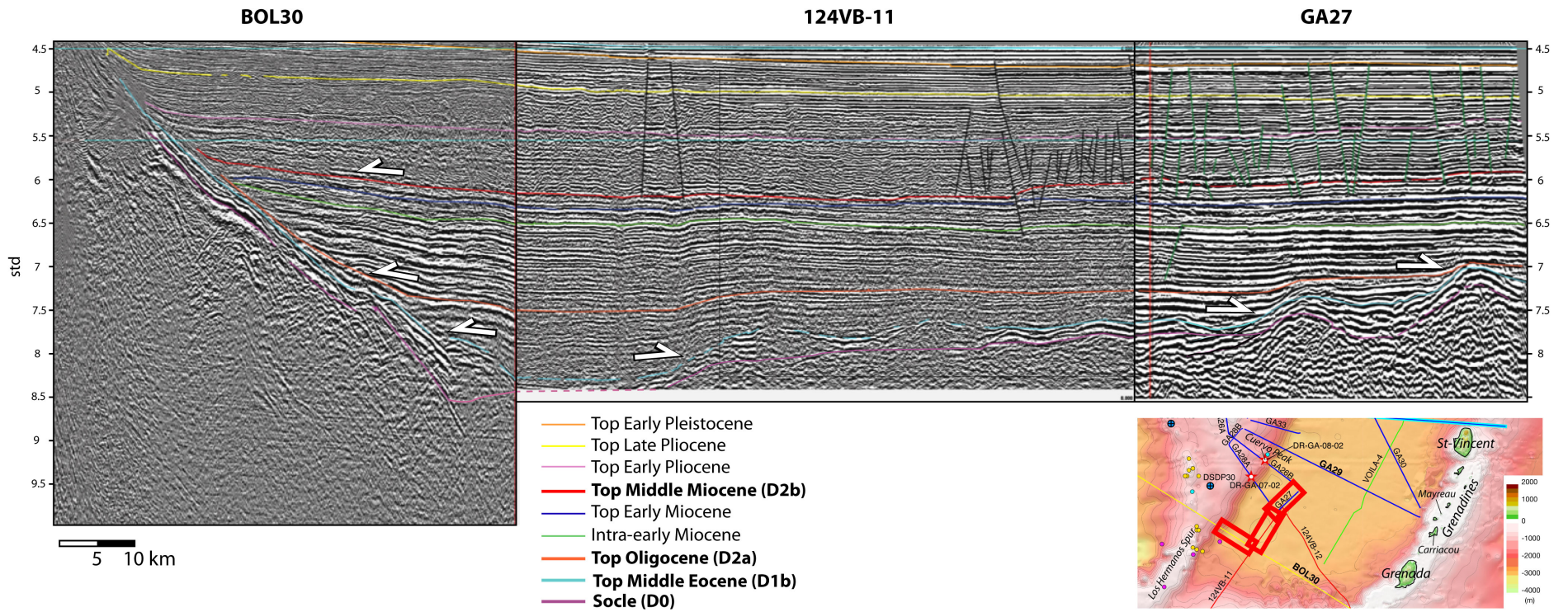
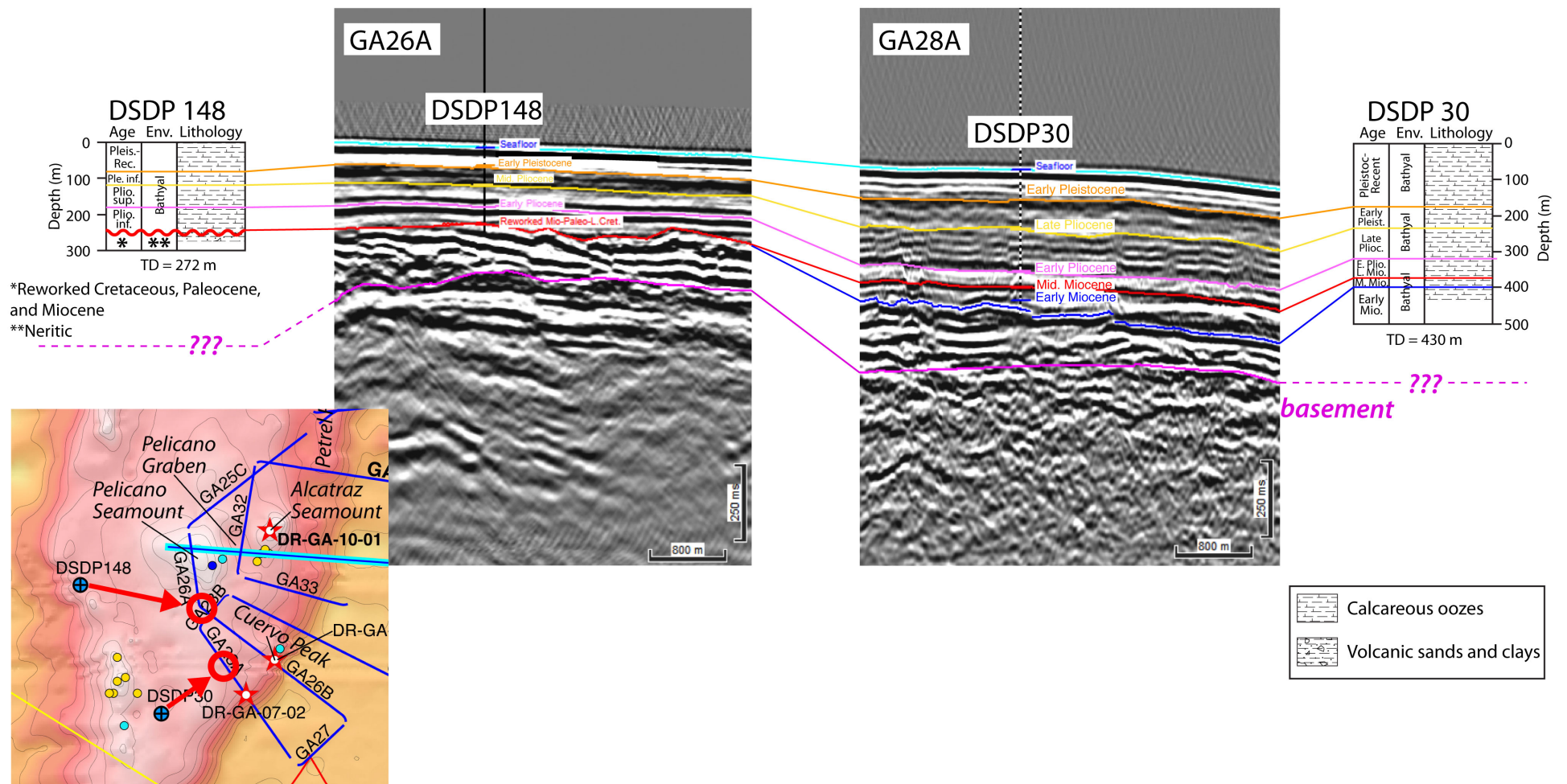


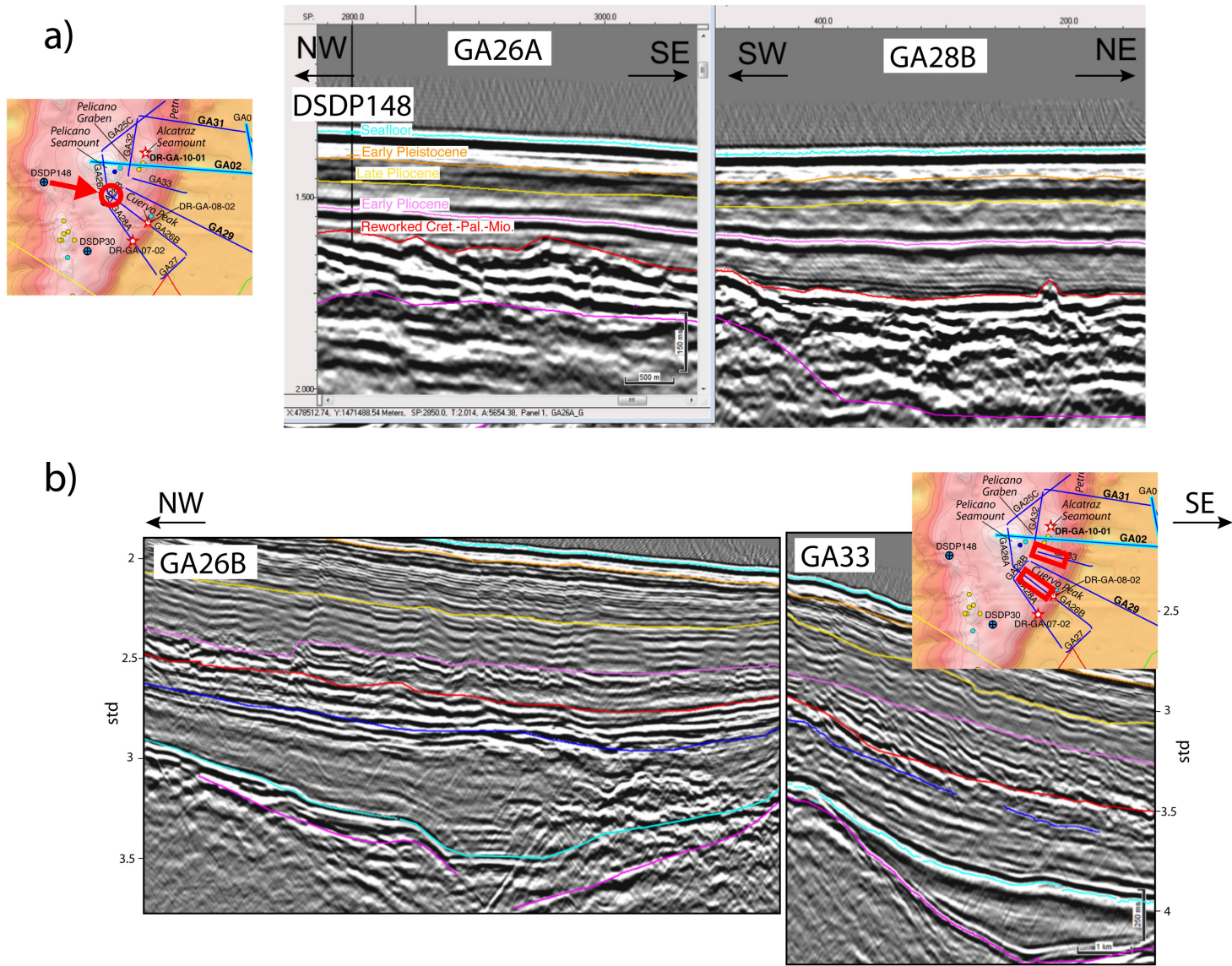
Figure S1: Seismic calibration using wells in the Carúpano basins.





47
48
49
50

Figure S3: Seismic calibration using wells on the Aves Ridge.



51
52
53

Figure S4: Horizon propagation on the Aves Ridge.

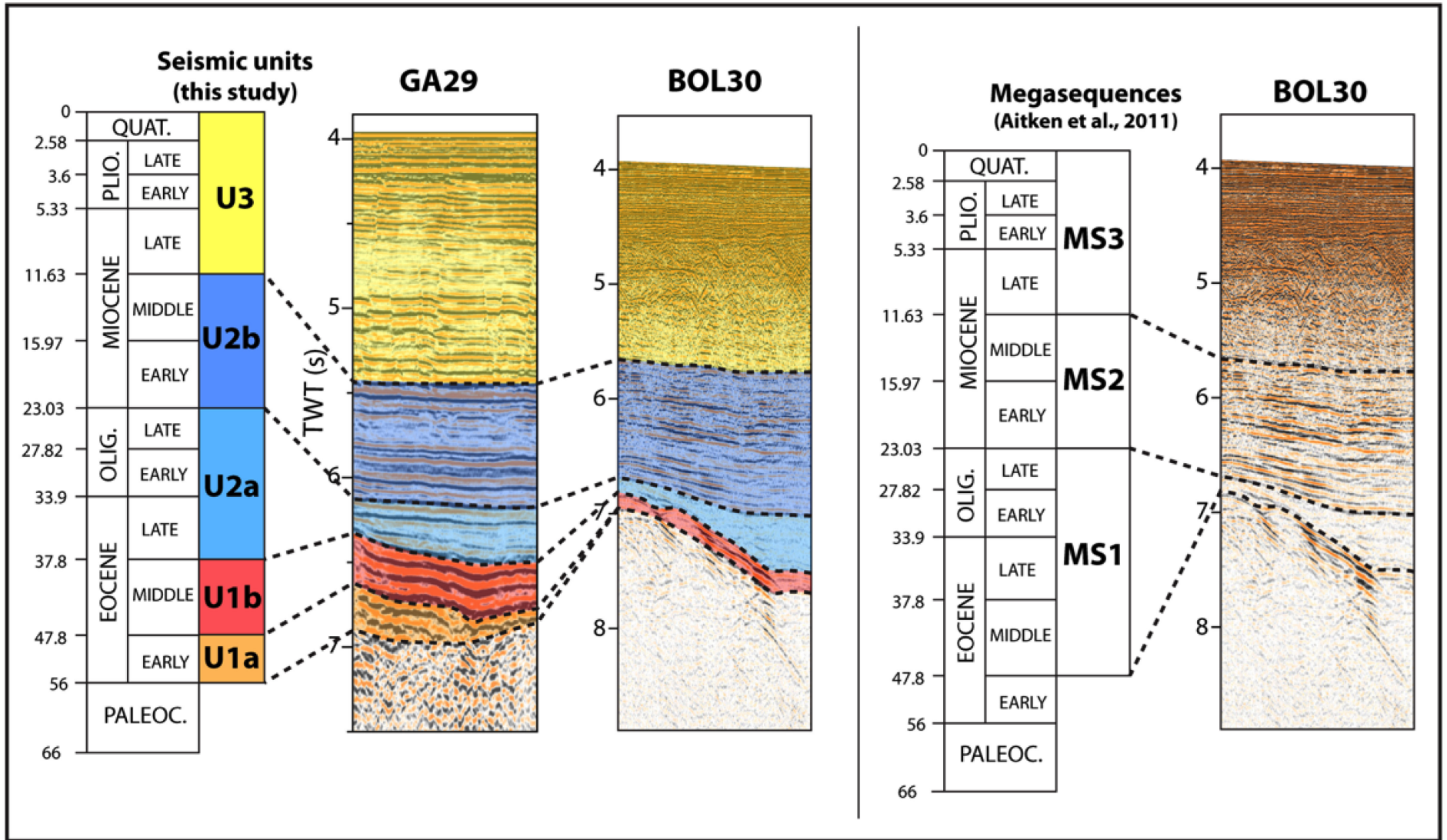


Figure S5: Comparison between the seismic units defined in this study and the megasequences defined by Aitken et al. (2011)

54
55
56
57