



RESEARCH ARTICLE

10.1029/2019AV000149

Special Section:

Understanding
Carbon-Climate FeedbacksExternal Forcing Explains Recent Decadal Variability
of the Ocean Carbon SinkGalen A. McKinley¹ , Amanda R. Fay¹ , Yassir A. Eddebbar² , Lucas Gloege¹ ,
and Nicole S. Lovenduski³ ¹Columbia University and Lamont Doherty Earth Observatory, Palisades, NY, United States, ²Scripps Institution of Oceanography, University of California San Diego, La Jolla, CA, United States, ³Department of Atmospheric and Oceanic Sciences and Institute of Arctic and Alpine Research, University of Colorado, Boulder, CO, USA

Key Points:

- The reduced ocean carbon sink in the decade of the 1990s can be explained by the slowed growth rate of atmospheric CO₂
- The global sea surface temperature response to Mt Pinatubo in 1991 explains the intra-decadal pattern of the ocean carbon sink in the 1990s
- There will be an immediate reduction in ocean carbon uptake as atmospheric pCO₂ responds to cuts in anthropogenic CO₂ emissions

Supporting Information:

- Supporting Information S1
- Original Version of Manuscript
- Peer Review History
- First Revision of Manuscript [Accepted]

Correspondence to:

G. A. McKinley,
mckinley@ldeo.columbia.edu

Citation:

McKinley, G. A., Fay, A. R., Eddebbar, Y. A., Gloege, L., & Lovenduski, N. S. (2020). External forcing explains recent decadal variability of the ocean carbon sink. *AGU Advances*, 1, e2019AV000149. <https://doi.org/10.1029/2019AV000149>

Received 6 DEC 2019

Accepted 25 MAR 2020

Peer Review The peer review history for this article is available as a PDF in the Supporting Information.

Author Contributions:

Conceptualization: Galen A.

McKinley, Lucas Gloege

Data curation: Amanda R. Fay, Nicole

S. Lovenduski

(continued)

©2020. The Authors.

This is an open access article under the terms of the Creative Commons Attribution License, which permits use, distribution and reproduction in any medium, provided the original work is properly cited.

Abstract The ocean has absorbed the equivalent of 39% of industrial-age fossil carbon emissions, significantly modulating the growth rate of atmospheric CO₂ and its associated impacts on climate. Despite the importance of the ocean carbon sink to climate, our understanding of the causes of its interannual-to-decadal variability remains limited. This hinders our ability to attribute its past behavior and project its future. A key period of interest is the 1990s, when the ocean carbon sink did not grow as expected. Previous explanations of this behavior have focused on variability internal to the ocean or associated with coupled atmosphere/ocean modes. Here, we use an idealized upper ocean box model to illustrate that two external forcings are sufficient to explain the pattern and magnitude of sink variability since the mid-1980s. First, the global-scale reduction in the decadal-average ocean carbon sink in the 1990s is attributable to the slowed growth rate of atmospheric pCO₂. The acceleration of atmospheric pCO₂ growth after 2001 drove recovery of the sink. Second, the global sea surface temperature response to the 1991 eruption of Mt Pinatubo explains the timing of the global sink within the 1990s. These results are consistent with previous experiments using ocean hindcast models with variable atmospheric pCO₂ and with and without climate variability. The fact that variability in the growth rate of atmospheric pCO₂ directly imprints on the ocean sink implies that there will be an immediate reduction in ocean carbon uptake as atmospheric pCO₂ responds to cuts in anthropogenic emissions.

Plain Language Summary Humans have added 440 Pg of fossil fuel carbon to the atmosphere since 1750, driving up the atmospheric CO₂ concentration. But not all of this carbon remains in the atmosphere. The ocean has absorbed 39%, substantially mitigating anthropogenic climate change. Though this “ocean carbon sink” is a critical climate process, our understanding of its mechanisms remains limited. Of great interest is the unexplained slow-down of the ocean carbon sink in the 1990s and a subsequent recovery. In this work, we use a simple globally-averaged model to show that two processes external to the ocean are sufficient to explain the slowing of the ocean carbon sink in the 1990s. First, a reduced rate of accumulation of carbon in the atmosphere after 1989 reduced the atmosphere–ocean gradient that drives the ocean sink. Second, the eruption of Mt Pinatubo led to changes in ocean temperature that modified the timing of the sink from 1991 to 2001. We illustrate that the most important control on the decade-averaged magnitude of the ocean sink is variability in the growth rate of atmospheric CO₂. This implies that as future fossil fuel emission cuts drive reduced growth of atmospheric CO₂, the ocean sink will immediately slow down.

1. Introduction

The ocean has absorbed the equivalent of 39% of fossil carbon emissions since 1750, significantly modulating the growth of atmospheric CO₂ and the associated climate change (Ciais et al., 2013; Friedlingstein et al., 2019; Le Quéré et al., 2018a, 2018b; McKinley et al., 2017). If emissions continue to accelerate, this sink is expected to grow and substantially mitigate atmospheric carbon accumulation for the next several centuries (Randerson et al., 2015). Yet, we lack a detailed understanding of spatial and temporal variability in the sink and its underlying mechanisms. Incomplete understanding of ocean flux variability contributes to significant uncertainty in the global anthropogenic carbon budget for recent decades; this uncertainty is equivalent to ~10% of the atmospheric pCO₂ growth rate (Friedlingstein et al., 2019; Le Quéré

Funding acquisition: Galen A. McKinley

Investigation: Galen A. McKinley, Amanda R. Fay, Yassir A. Eddebbbar

Methodology: Galen A. McKinley

Project administration: Galen A. McKinley

Resources: Galen A. McKinley, Nicole S. Lovenduski

Software: Galen A. McKinley

Supervision: Galen A. McKinley

Visualization: Galen A. McKinley, Amanda R. Fay, Nicole S. Lovenduski

Writing - original draft: Galen A. McKinley

Writing - review & editing: Galen A. McKinley, Amanda R. Fay, Yassir A. Eddebbbar, Nicole S. Lovenduski

et al., 2018a, 2018b). This imbalance, in turn, limits the scientific community's ability to inform international efforts to curb fossil fuel emissions (Peters et al., 2017).

Recent studies have concluded that ocean hindcast models, which have long been used to assess the ocean carbon sink, may significantly underestimate its variability (Gruber et al., 2019a; Le Quéré et al., 2018b). These conclusions are based on comparisons to new observation-based gap-filled products that suggest substantially larger interannual to decadal variability (Landschützer et al., 2015, 2016; Rödenbeck et al., 2013, 2015). It is possible, however, that these gap-filled products do not accurately represent the surface ocean carbon cycle given that their raw input data cover only 1.5% of the global ocean in the last 3 decades, and only 3.5% in the most recent years (Bakker et al., 2016). Variability may be amplified by the significant extrapolation that occurs when global full-coverage maps are produced from these very sparse data (Fay et al., 2018; Rödenbeck et al., 2015).

The ocean carbon sink of the 1990s is of particular interest. During this time, the growth of the ocean sink stalled from its expected growth (DeVries et al., 2019; Fay & McKinley, 2013; Landschützer et al., 2015; Le Quéré et al., 2007; Lovenduski et al., 2008). Using a data-constrained ocean circulation model, it has been suggested that this slow-down was caused by excess outgassing of natural carbon due to an anomalously strong overturning of the ocean's upper 1000 m (DeVries et al., 2017). Changing patterns of wind-driven circulation in the Southern Ocean have also been proposed (Gruber et al., 2019a; Landschützer et al., 2015). Consensus has yet to be achieved on the mechanisms driving changes in the 1990s sink. It is critical that we accurately quantify and diagnose this variability so that we can better project the future ocean carbon sink and, thus, the degree to which the ocean carbon sink will continue to mitigate global climate change.

2. Methods

In this study, we compare the ocean carbon sink since 1980 as estimated from six ocean hindcast models, four observationally-based products, and a theoretical upper ocean box model. We supplement our analysis with results from nine ocean hindcast models run in constant climate model (DeVries et al., 2019). Supporting information provides additional methodological details.

2.1. Models and Products

Six (6) ocean hindcast models for 1980–2017 are the primary basis for this analysis (Table S1). Ocean hindcast models are gridded, three dimensional representations of the evolution of the ocean state for recent decades. These models have been forced at the surface by winds, heat and buoyancy fluxes from reanalyses of the past atmospheric state. The models we analyze are those used in the recent versions of the Global Carbon Budget (Le Quéré et al., 2018a, 2018b).

Four (4) observationally-based products are also utilized, chosen because they all cover 1985–2016 (Table S2). While models have full coverage in space and time, in situ observations only cover a small fraction of the global surface ocean. These observation-based products utilize gap-filling techniques to estimate values in all periods and areas not directly observed. Interpolation methods fill spatial and temporal gaps by assuming statistical relationships with neighboring or similar areas with available observations.

Ensemble means of the 4 observationally-based products and the 6 hindcast models are calculated.

2.2. Flux Analysis

Model fluxes span years 1980–2017, while observationally-based products span the 1985–2016 period (Table S1, S2). An area-weighted annual mean timeseries is calculated for each model and product for regions of interest: i) global, ii) east equatorial Pacific biome (Fay & McKinley, 2014), and iii) global, excluding the east equatorial Pacific biome. We note that individual models and products utilize different methods for the flux calculation, including wind speed products and parameterizations. The standard approach of our field is to use the mean of these estimates as the current best-estimate of the air-sea flux (DeVries et al., 2019; Le Quéré et al., 2018a, 2018b).

2.3. pCO₂ Analysis

For pCO₂, hindcast models span 1980–2017, while observationally-based products cover 1985–2016. Detrended pCO₂^{ocean} is obtained by removing the atmospheric trend of 1.70 μatm/yr (the observed

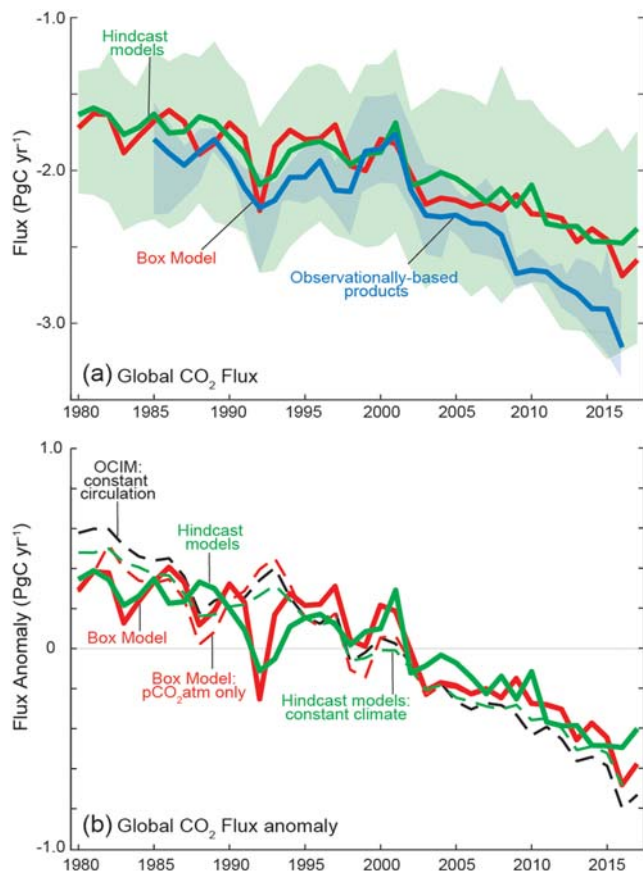


Figure 1. Air-sea CO₂ flux of anthropogenic carbon from observationally-based products (blue), hindcast models (green) and upper ocean diagnostic box model (red); negative flux into the ocean. (A) global (bold), with range of individual members (shading), (B) anomalies of air-sea CO₂ flux for the hindcast models with constant climate and variable pCO₂^{atmosphere} (green dashed), and variable climate and variable pCO₂^{atmosphere} (solid green); box model with only pCO₂^{atmosphere} forcing (dashed red) and both pCO₂^{atmosphere} and volcano-driven SST forcing (solid red); and the constant circulation Ocean Circulation Inverse Model (dash black, DeVries, 2014) that imposes variable pCO₂^{atmosphere}. In B, dashed lines are correlated at 0.97–0.99 and the solid lines 0.92 (Table S4). In A, the mean flux of the observationally-based products is increased by 0.45 PgC/yr (Jacobson et al., 2007) to account for the outgassing of natural carbon supplied by rivers to the ocean.

over time. This leads to our abiotic formulation. Thus, we remove from the DIC_{deep} concentration the amount of carbon that would be vertically supplied, and then removed biologically. We take a global mean DIC_{deep} concentration of 2320 mmol/m³ and a biological pump component of this of 265 mmol/m³ (Sarmiento & Gruber, 2006, Table 8.2, Figure 8.4.2, organic + carbonate) leading to DIC_{deep} = 2055 mmol/m³.

NOAA ESRL surface marine boundary layer annual mean observed xCO₂^{atmosphere} is used to force the model. This is the same xCO₂^{atmosphere} data used to force the ocean hindcast models and observationally-based products, and in conversion to pCO₂^{atmosphere}, the water vapor correction is applied. pCO₂^{atmosphere} is interpolated linearly to monthly resolution, using the annual mean value at the mid-point of each year. Temperature is held at a constant global surface ocean value, except if the impact of volcanoes is included (Figure S2). This estimate of the forced sea surface temperature (SST) response to the El Chichon and Mt Pinatubo volcanic eruptions is based on the Community Earth System Model Large Ensemble (CESM LENS) (Eddebbar et al., 2019). The global-mean expression of this forced temperature anomaly

average annual atmospheric pCO₂ change for 1980 to 2017) from each time series. ΔpCO₂ is calculated at annual timescales by surface ocean pCO₂ - atmospheric pCO₂ [ΔpCO₂ = pCO₂^{ocean} - pCO₂^{atmosphere}].

2.4. Accounting for Open Ocean Areas Without Observationally-Based Estimates

There are large differences in the spatial extent of the observationally-based products compared to the hindcast models. This difference, when left unaccounted for, results in significant discrepancies between models and products for both global mean flux and global mean pCO₂. We correct for spatial coverage differences by calculating the mean flux or mean pCO₂ in the area of each model where there is no coverage for a specific data product. By calculating this offset from 6 models for each individual data-product's spatial coverage, we generate a product-specific offset for the annual time series that corrects for the difference in spatial coverage. As expected, observationally-based products with more complete spatial coverage have smaller offsets (Table S2). The only exception to this data-product correction process is the JENA product (Rödenbeck et al., 2013) because it is produced with full spatial coverage and is primarily used in this analysis on its coarser native grid.

2.5. Upper Ocean Box Model

The box model (Figure S1) solves for the time change of Dissolved Inorganic Carbon (DIC) in single upper ocean box (Equation 1).

$$\frac{dDIC}{dt} = \frac{\nu}{V} (DIC_{deep} - DIC) - \frac{k_w S_o \rho}{dz} (pCO_2^{ocean} - pCO_2^{atmosphere}) \quad (1)$$

The first term on the right of Equation 1 is the overturning circulation (ν) acting on the surface to depth gradient of DIC. V is the volume of the global ocean box, $V = A \cdot dz$. Our value for the global area removes ice-covered regions. The second term on the right of Equation 1 is the air-sea exchange of CO₂. The rate of flux is set by a piston velocity (k_w), solubility (S_o) and density (ρ) over the depth of the box ($dz = 200$ m), multiplied by the ocean to atmosphere difference of pCO₂ (Wanninkhof, 2014). S_o and pCO₂^{ocean} are calculated using full carbon chemistry (Dickson & Millero, 1987; Mehrbach et al., 1973) given inputs of temperature, salinity, alkalinity and DIC. Parameters choices are globally representative values outside the tropics (Table S3). Consistent with current understanding of the drivers of ocean uptake of anthropogenic carbon (Gruber et al., 2019b), the biological pump is assumed constant

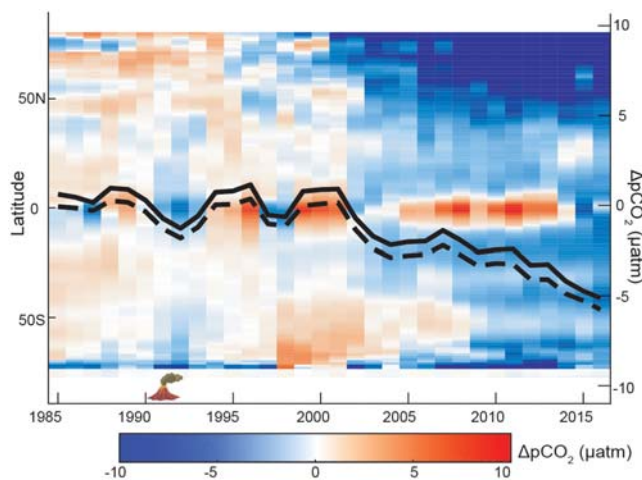


Figure 2. Latitudinal mean anomaly $\Delta p\text{CO}_2$ (μatm) from the ensemble mean of the observationally-based products. Anomaly is calculated from the 1990–1999 mean. Annual $\Delta p\text{CO}_2$ time series overlaid in black for global (solid) and global, excluding the east equatorial Pacific (dashed).

$p\text{CO}_2^{\text{atmosphere}}$ (Fay & McKinley, 2013; Landschützer et al., 2015; Lovenduski et al., 2007; McKinley et al., 2017) with a more negative $\Delta p\text{CO}_2$ driving a greater ocean uptake. From 1991 to 1993, $\Delta p\text{CO}_2$ experiences a negative or neutral anomaly on the global average and at most latitudes over the 91% of ocean that is south of 45°N (Figure 2, S4). From 1993–1995 and again for 1999–2001, $\Delta p\text{CO}_2$ anomalies were positive at most latitudes. In 1997–1998, the El Niño event drove negative $\Delta p\text{CO}_2$ anomalies in the tropics (Figure 2), but the El Niño–Southern Oscillation (ENSO) cycle does not dominate the global mean decadal variability (Figure 2, Figure S5). Following 2001, $\Delta p\text{CO}_2$ anomalies become much more negative at all latitudes outside the tropics and in the global average (Figure 2).

From 1980 to 2017, $p\text{CO}_2^{\text{atmosphere}}$ increased from $330 \mu\text{atm}$ to $394 \mu\text{atm}$, and $p\text{CO}_2^{\text{ocean}}$ follows the atmosphere on the long-term (Figure 3a). Detrending reveals the detailed features of these timeseries (Figure 3b). Growth of $p\text{CO}_2^{\text{atmosphere}}$ slowed significantly with respect to the long-term trend starting in the late 1980s (Figure 3b, Sarmiento, 1993). This change was due in part to a pause of growth in fossil fuel emissions from 1989 to 1994 when fossil fuel emissions were approximately constant at 6.1 Pg/yr (Friedlingstein et al., 2019; Sarmiento et al., 2010). Increased uptake of carbon by the terrestrial biosphere also contributed significantly to this slow down (Angert et al., 2004; Brovkin et al., 2010; Sarmiento et al., 2010). Though some studies have attributed the increased land carbon sink to temperature and radiation changes caused by Mt. Pinatubo’s 1991 eruption, there is not a consensus with respect to the mechanisms on land (Angert et al., 2004; Brovkin et al., 2010; Frölicher et al., 2011; Lucht et al., 2002; Sarmiento et al., 2010).

Deviations in the evolution of $p\text{CO}_2^{\text{ocean}}$ from the evolution of $p\text{CO}_2^{\text{atmosphere}}$ drive $\Delta p\text{CO}_2$ changes in the observationally-based products and hindcast models (Figure 3c). Since global mean $\Delta p\text{CO}_2$ is only $\sim 5 \mu\text{atm}$ (Figure 3c), anomalies of a few μatm in either $p\text{CO}_2^{\text{atmosphere}}$ or $p\text{CO}_2^{\text{ocean}}$ can significantly impact the air-sea CO_2 flux. In 1992, growth of $p\text{CO}_2^{\text{ocean}}$ abruptly slowed in both the hindcast models and the observationally-based products (Figure 3b) and $\Delta p\text{CO}_2$ becomes more negative (Figure 3c). From 1992 through 2001, $p\text{CO}_2^{\text{ocean}}$ increases more rapidly than $p\text{CO}_2^{\text{atmosphere}}$, driving a positive change in $\Delta p\text{CO}_2$ over this period (Figure 3c). For 2002–2011 and beyond, $p\text{CO}_2^{\text{ocean}}$ grows more slowly than the strongly accelerating $p\text{CO}_2^{\text{atmosphere}}$, leading to increasingly negative $\Delta p\text{CO}_2$ (Figure 3c).

Given that global mean changes in the ocean sink (Figure 1) are found to occur at most latitudes (Figure 2), we hypothesize an important role for external forcing. To explore these drivers, we apply the upper ocean box model (Figure S1, Equation 1). The key processes captured by this model are (1) ventilation to the surface of deep waters with low anthropogenic carbon content, and (2) air-sea gas exchange. First, we ask: Are

extends to several hundred meters depth in CESM LENS. The box model is time stepped with monthly resolution for 1959–2018. In all cases, the box model is spun up from 1959–1979 using observed $p\text{CO}_2^{\text{atmosphere}}$ and the values presented in Table S3.

The mean uptake flux in the box model is most sensitive to the depth of the box and the global overturning rate (Figure S3, Supporting Information). We use $dz = 200 \text{ m}$ and set other parameters to result in a mean flux and $\Delta p\text{CO}_2$ consistent with the ocean models and observationally-based products.

3. Results/Discussion

Global air-sea CO_2 flux variability estimated by the ensemble means of ocean hindcast models and of observationally-based products (Gruber et al., 2019a; Landschützer et al., 2016) are highly correlated ($r = 0.95$) (Figure 1a, Table S4). The decadal variability of the air-sea CO_2 flux is not driven by a single region, but instead is largely globally coherent (DeVries et al., 2019; Le Quéré et al., 2018b; Landschützer et al., 2016). This air-sea CO_2 flux is primarily determined by the difference of the surface ocean and the atmosphere $p\text{CO}_2$, $\Delta p\text{CO}_2 = p\text{CO}_2^{\text{ocean}} -$

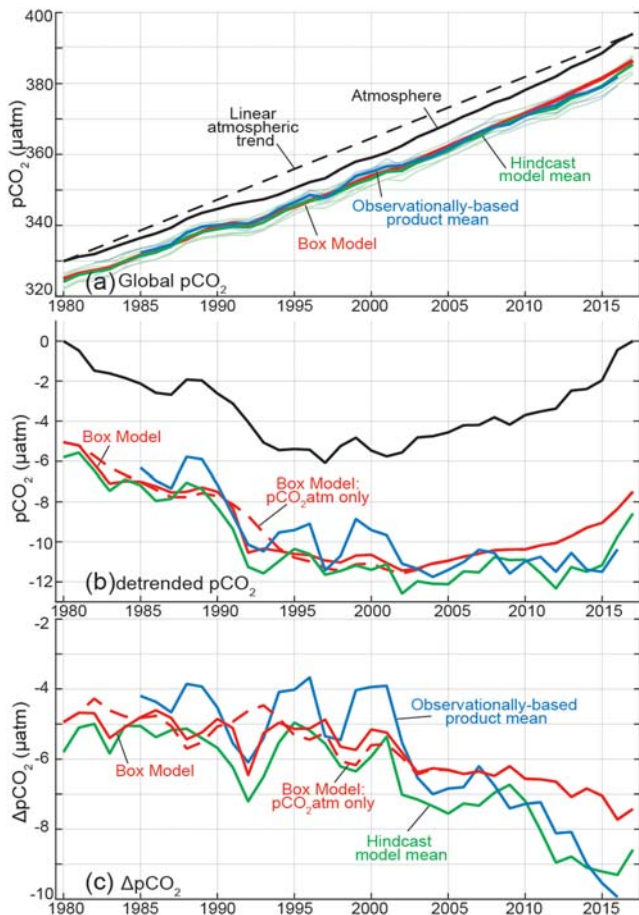


Figure 3. $p\text{CO}_2^{\text{atmosphere}}$ (black) and $p\text{CO}_2^{\text{ocean}}$ (colors) (A) with trend, (B) detrended with the long-term $p\text{CO}_2^{\text{atmosphere}}$ trend ($1.70 \mu\text{atm/yr}$ from 1980 to 2017), (C) $\Delta p\text{CO}_2 (= p\text{CO}_2^{\text{ocean}} - p\text{CO}_2^{\text{atmosphere}})$. Observationally-based products mean (blue), hindcast model mean (green) and upper ocean diagnostic box model (red). The box model is forced with only $p\text{CO}_2^{\text{atmosphere}}$ (dashed) and with both $p\text{CO}_2^{\text{atmosphere}}$ and volcano-associated SST change (solid). Hindcast models that did not have the water vapor correction applied to their atmospheric $p\text{CO}_2$ when the simulation was performed are adjusted to account for that difference (see Supporting Information). Figure S6 expands on these results by including additional box model forcing scenarios.

the changes in the growth rate of $p\text{CO}_2^{\text{atmosphere}}$ (Figure 3a,b) sufficient to substantially modify the global ocean carbon sink?

To test this, the box model is forced only with changes in the observed $p\text{CO}_2^{\text{atmosphere}}$. When the growth rate of $p\text{CO}_2^{\text{atmosphere}}$ slows in the late 1980s, growth of $p\text{CO}_2^{\text{ocean}}$ gradually slows in response (Figure 3b, red dashed line). $p\text{CO}_2^{\text{ocean}}$ achieves a minimum a few years after the $p\text{CO}_2^{\text{atmosphere}}$ minimum in 1994, consistent with the long equilibration timescale for carbon due to carbonate chemistry (Figure S6). Considering the temporal evolution of the $\Delta p\text{CO}_2$ (Figure 3c) and flux over 1988–1994, the rapid slowdown of $p\text{CO}_2^{\text{atmosphere}}$ growth would have caused an outgassing pulse centered on 1993 (Figure 1b). Beyond 1994, $p\text{CO}_2^{\text{atmosphere}}$ growth returned to approximately its long-term growth rate and then grew more rapidly after 2001 (Figure 3b). Since $p\text{CO}_2^{\text{ocean}}$ lags behind $p\text{CO}_2^{\text{atmosphere}}$, $\Delta p\text{CO}_2$ grows more negative as the atmosphere accelerates (Figure 3b,c). For the box model forced only with $p\text{CO}_2^{\text{atmosphere}}$, this increasingly negative $\Delta p\text{CO}_2$ drove a steady increase in ocean uptake from 1994 onward (Figure 1b).

This same response of the global mean air-sea CO_2 flux to $p\text{CO}_2^{\text{atmosphere}}$ forcing occurs in two types of three-dimensional ocean models. Both an ensemble of ocean hindcast models with constant climate forcing (DeVries et al., 2019) and the data-constrained constant circulation Ocean Circulation Inverse Model (OCIM) (DeVries, 2014) have the same flux response as in the box model forced only with variable $p\text{CO}_2^{\text{atmosphere}}$ (Figure 1b). Correlations across these models are almost perfect ($r = 0.97\text{--}0.98$, dashed lines in Figure 1b) and remain very high even when independently detrended ($r > 0.91$, Table S4). This correspondence emphasizes the critical role of variability in the growth of $p\text{CO}_2^{\text{atmosphere}}$ to variability in the ocean sink. It also serves as evidence that the box model is realistically estimating the timing and magnitude of this response.

Though it is the slowed growth of $p\text{CO}_2^{\text{atmosphere}}$ in the early 1990s that causes the mean 1990s sink to be only 0.1 PgC/yr larger than the sink of the 1980s (Table S5), the pattern of the sink change in the 1990s is clearly inconsistent with ocean hindcast models with variable climate (compare bold green to red dash in Figure 1b), and thus is also inconsistent with the observationally-based products (Figure 1a). An additional mechanism is required.

Volcanic eruptions of El Chichon in 1982 and Mt. Pinatubo in 1991 injected large quantities of sulfate aerosols into the stratosphere and dramatically altered global air and sea surface temperatures (Church et al., 2005). The forced response to these eruptions was a substantial oceanic uptake of carbon and oxygen for the following 2–3 years (Eddebbar et al., 2019). Modern earth system models indicate that a significant negative anomaly in global sea surface temperatures (SST) was driven by the eruptions (Eddebbar et al., 2019). For the diagnostic box model, we apply the same magnitude of forced global SST cooling estimated by these models, $0.1 \text{ }^\circ\text{C}$ in 1982 and $0.2 \text{ }^\circ\text{C}$ in 1991 (Figure S2) to evaluate the impact on ocean carbon sink variability.

With this volcano-forced SST variability applied to the box model, strong coolings in 1982 and in 1991 drive a rapid drop of $p\text{CO}_2^{\text{ocean}}$ (Figure 3b, solid red) and a strong uptake anomaly (Figure 1, red bold). The reduced flux that would have occurred in the early 1990s due to the slowing of $p\text{CO}_2^{\text{atmosphere}}$ (Figure 1b, red dash) was overwhelmed by the rapid cooling due to Mt. Pinatubo and thus, a strong uptake pulse occurred (Figure 1b, red bold). The re-warming and excess DIC in the surface ocean that follow Mt. Pinatubo elevates $p\text{CO}_2^{\text{ocean}}$ relative to $p\text{CO}_2^{\text{atmosphere}}$ through 2001, leading to $\Delta p\text{CO}_2$ becoming less negative over this period

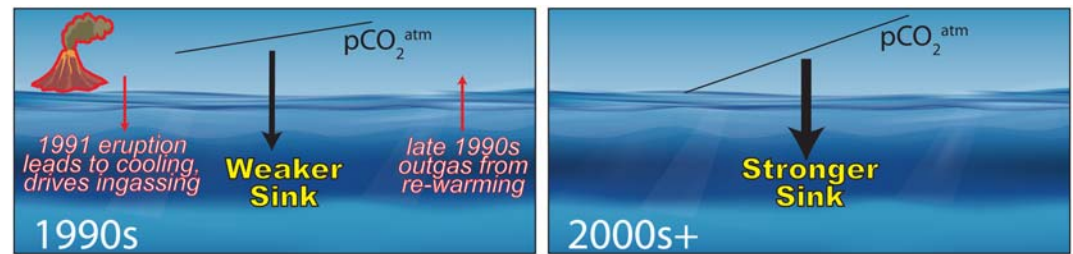


Figure 4. Mechanisms of recent decadal variability of the ocean carbon sink. (A) The reduced sink of the 1990s (black arrow) was due to a slowing of the $p\text{CO}_2^{\text{atmosphere}}$ growth rate, while the rapid cooling and slower warming recovery in response to the eruption of Mt. Pinatubo (red arrows). (B) In the 2000s and beyond, $p\text{CO}_2^{\text{atmosphere}}$ growth accelerates, leading to enhanced $\Delta p\text{CO}_2$ and sink growth.

(Figure 3c). Thus, the sink stagnates from the early to late 1990s (Figure 1). The net effect of both forcings is that the reduced sink of the early 1990s caused by the slowed $p\text{CO}_2^{\text{atmosphere}}$ growth rate is shifted to the late 1990s by the rapid cooling and slow re-warming caused by Mt. Pinatubo. In summary, the climate variability mechanism that led to a neutral 1990s intra-decadal trend of the ocean carbon sink (DeVries et al., 2019) contains a major contribution from the ocean's response and recovery from Pinatubo cooling, i.e. a response to external forcing from volcanos.

CO_2 fluxes from the diagnostic box model forced with both observed $p\text{CO}_2^{\text{atmosphere}}$ and the volcanoes' impacts on sea surface temperature are highly correlated to the ensemble mean of the observationally-based products for their overlapping periods ($r = 0.89$, 1985–2016) and hindcast models ($r = 0.92$, 1980–2017) (Figure 1a, Table S4). The simplicity of these global mechanisms and the strong correspondence of the resulting decadal variability to the products and the models supports the conclusion that global air-sea CO_2 flux variability since 1980 has been significantly driven by external forcing from (1) the changing $p\text{CO}_2^{\text{atmosphere}}$ growth rate and (2) in the 1990s, the surface ocean temperature effects of Mt. Pinatubo (Figure 4).

Since ocean carbon uptake is enhanced with the eruption of large volcanos, the effect on $p\text{CO}_2^{\text{atmosphere}}$ would ideally be modeled interactively. Unfortunately, land carbon sink uncertainties preclude this. The sea surface temperature effects of Pinatubo led to an increased ocean sink of approximately 0.5 PgC/yr (Figure 1b), but estimates of the land sink anomaly at this time are much larger and uncertain, ranging 1–2 PgC/yr (Angert et al., 2004; Sarmiento, 1993; Sarmiento et al., 2010). In fact, the post-Pinatubo period is one of maximum uncertainty in the post-1960 Global Carbon Budget (Friedlingstein et al., 2019; Peters et al., 2017). Soon after the eruption of Mt. Pinatubo, Sarmiento (1993) noted the coincident slowdown in growth of $p\text{CO}_2^{\text{atmosphere}}$ and reported that ^{13}C records at that time suggested a terrestrial driver, while O_2/N_2 records suggested an oceanic driver. A modern reconsideration of ^{13}C and O_2/N_2 records may lead to better understanding of this partitioning.

This analysis illustrates that externally forced variability played an important role in recent decadal variability of the ocean carbon sink. However, the total climate variability in any variable is the sum of forced variability caused by drivers external to the system, and internal variability due to system dynamics (Deser et al., 2012). We have recently reviewed the many previous studies on mechanisms of ocean carbon sink variability (McKinley et al., 2017). Processes discussed have included the variable upper ocean circulation, wind and circulation patterns in the Southern Ocean, and modes of coupled atmosphere/ocean variability in both hemispheres (DeVries et al., 2017, 2019; Gruber et al., 2019a; Landschützer et al., 2015, 2019; Lovenduski et al., 2007). These analyses have focused on variability internal to the ocean or associated with coupled atmosphere/ocean modes (McKinley et al., 2017), but have not been able to comprehensively explain the global-scale decadal variability. Here, we illustrate that the observed changes can, to first order, be attributed to two forcings external to the ocean.

Previous studies have also typically focused on a single model or a single observationally-based product. However, for the best estimate of the real ocean's flux variability, it is common practice to use the ensemble mean of ocean models and/or of observationally-based products (DeVries et al., 2019; Friedlingstein

et al., 2019; Le Quéré et al., 2018a, 2018b), which is our approach. Only the internal variability that is represented in most ensemble members will be preserved in the ensemble average. Averaging damps internal variability of the individual members and thus amplifies the common forced component (Deser et al., 2012; McKinley et al., 2016, 2017). Our results illustrate that the current best estimate of the real ocean's flux variability, based on this ensemble average, can be explained largely with forced mechanisms. However, because we do not have enough information to determine which member of the ensemble best approximates the ocean's true internal variability, this current best estimate potentially underestimates the full impact of internal variability in the carbon sink of the real ocean.

What is the range of magnitude of internal variability that may be occurring in addition to the forced variability that we identify? Individual observationally-based products have a range of detrended flux variability from 0.14–0.30 PgC/yr, while the ensemble mean variability is 0.19 PgC/yr (1σ for 1985–2016). For the hindcast models, the range is 0.10–0.20 PgC/yr and the ensemble mean variability is 0.11 PgC/yr for the same years. Our estimate of the amplitude of externally-forced variability from the box model is 0.14 PgC/yr (Figure 1). By this measure, externally forced variability as estimated by the box model is approximately equal to the total amplitude common to the hindcast models, but is only about 70% of the variability common to the products. On top of this, the individual models and products suggest a wide range of additional internal variability. In future studies, separation of the forced component of ocean carbon sink variability driven by changing $p\text{CO}_2^{\text{atmosphere}}$ and volcanos from the total variability in individual models and products should help to clarify the patterns, magnitudes, and physical and biogeochemical mechanisms of internal variability in the real ocean. For diagnostic (Friedlingstein et al., 2019; Le Quéré et al., 2018a, 2018b) and predictive purposes (Randerson et al., 2015) it is critical to also determine which model and observationally-based estimates best represent both the internal and forced variability of the real ocean.

Though our box model is sufficient to represent the global-mean behavior of the externally-forced ocean carbon sink in recent decades, other mechanisms may increase in importance in the future. As climate changes have increased impact on ocean physics and biogeochemistry, feedbacks on the carbon sink of increasing magnitude can be expected. Future reduction in the overturning circulation, or increased re-emergence of waters already carrying a high anthropogenic carbon load would reduce the sink. A weaker biological pump would also damp net ocean carbon uptake (Kwon et al., 2009). The reduced buffer capacity of the surface ocean should grow in importance over time, particularly under high emission scenarios (Fassbender et al., 2017). As mitigation of CO_2 emissions occurs, the growth rate of $p\text{CO}_2^{\text{atmosphere}}$ will slow. With this reduced external forcing, the imprint of internal variability on the sink should become more evident. Improved understanding of both internal and external mechanisms is essential to continue to accurately diagnose the evolving ocean carbon sink, and to improve model-based predictions.

4. Conclusions

We have shown that externally forced variability is sufficient to explain a significant portion of current model and observationally-based best-estimates of the recent decadal variability of the global ocean carbon sink (Figure 1a). The reduced ocean carbon sink in the decade of the 1990s was driven by a slowed growth rate of $p\text{CO}_2^{\text{atmosphere}}$. The intra-decadal timing of the slowed growth rate in the 1990s was due to the surface ocean temperature response to the Mt. Pinatubo eruption in 1991. Volcano-driven cooling first led to an anomalously large sink, and then as surface ocean temperatures recovered, $p\text{CO}_2^{\text{ocean}}$ was elevated causing the sink to slow. In the box model, only this SST response is needed to replicate the behavior of the observationally-based products and the ocean hindcast models (Figure 1), but it would be of great value to perform a deeper analysis of the upper ocean response to Mt. Pinatubo with future studies. From 2001 on, the recovery of the global ocean carbon sink is attributable to the enhanced growth rate of $p\text{CO}_2^{\text{atmosphere}}$ (Figure 4).

Implications for the future ocean carbon sink are several. First, we note the relative importance of external vs internal drivers of ocean sink change can be expected to change, and thus both must be understood. Regarding external forcing, future large volcanic eruptions cannot be predicted, and it is difficult to predict the detailed future of $p\text{CO}_2^{\text{atmosphere}}$. Thus, these are now identified as additional sources of uncertainty in decadal predictions and long-term projections (Lovenduski et al., 2019; McKinley et al., 2017). The

timescales on which additional human interventions in the climate system, such as solar radiation management or nuclear conflict, would mimic these externally forced changes and modify the ocean carbon sink should be considered (Lauvset et al., 2017; Lovenduski et al., 2020). Finally, since the changing growth rate of $p\text{CO}_2^{\text{atmosphere}}$ is the primary driver of recent variability in the ocean carbon sink, the ocean sink should be expected to slow as reductions in the $p\text{CO}_2^{\text{atmosphere}}$ growth rate occur in response to climate change mitigation efforts (Peters et al., 2017). It is important that this critical feedback on the atmospheric CO_2 content be accurately estimated and accounted for in policy making.

Data Availability Statement

Ocean hindcast models with real climate are available from <https://www.globalcarbonproject.org/carbon-budget/18/data.htm>; ocean hindcast models with constant climate are available from DeVries et al. (2019); and observationally-based products are available from https://www.nodc.noaa.gov/ocads/oceans/SPCO2_1982_2015_ETH_SOM_FFN.html (SOM-FFN), <http://www.bgc-jena.mpg.de/CarboScope/> (JENA), <https://doi.org/10.6084/m9.figshare.7894976.v1> (CSIR), and <http://dods.lscse.ipsl.fr/invvat/CMEMS/> (LSCE). The code for the upper ocean box model is available (<https://doi.org/10.6084/m9.figshare.11983947.v1>).

Acknowledgments

Funding from many countries and agencies has supported the collection of surface ocean $p\text{CO}_2$ data, for development of ocean hindcast models and observationally-based products, and for international coordination. G.A.M., A.R.F. and L.G. were supported by NASA NNX17AK19G and by Columbia University. G.A.M., A.R.F. and N.S.L. were supported by National Science Foundation OCE-1948664 and OCE-1558225. N.S.L. was also supported by NSF OCE-1752724, NSF PLR-13009540, and the Open Philanthropy Project. This work would not be possible without the efforts of many scientists who have collected surface ocean $p\text{CO}_2$ data and contributed it to the SOCAT database, and to the developers of the observationally-based products based on these data. We thank also the scientists who have contributed their ocean hindcast model results to the Global Carbon Project. Leadership from the International Ocean Carbon Coordinating Project (IOCCP) and the Global Carbon Project (GCP) has been essential to the success of these efforts. This is Lamont Doherty Earth Observatory contribution #8400.

References

- Angert, A., Biraud, S., Bonfils, C., Buermann, W., & Fung, I. (2004). CO_2 seasonality indicates origins of post-Pinatubo sink. *Geophysical Research Letters*, 31(11). <https://doi.org/10.1029/2004GL019760>
- Bakker, D. C. E., Pfeil, B., Landa, C. S., Metzl, N., O'Brien, K. M., Olsen, A., et al. (2016). A multi-decade record of high-quality $f\text{CO}_2$ data in version 3 of the Surface Ocean CO_2 Atlas (SOCAT). *Earth System Science Data*, 8(2), 383–413. <https://doi.org/10.5194/essd-8-383-2016>
- Brovkin, V., Loren, S., JungCLAUS, J., Raddatz, T., Timmreck, C., Reick, C., et al. (2010). Sensitivity of a coupled climate-carbon cycle model to large volcanic eruptions during the last millennium. *Tellus Series B: Chemical and Physical Meteorology*, 62(5), 674–681. <https://doi.org/10.1111/j.1600-0889.2010.00471.x>
- Church, J. A., White, N. J., & Arblaster, J. M. (2005). Significant decadal-scale impact of volcanic eruptions on sea level and ocean heat content. *Nature*, 438(7064), 74–77. <https://doi.org/10.1038/nature04237>
- Ciais, P., Sabine, C., Bala, G., Bopp, L., Brovkin, V., Canadell, J., et al. (2013). Carbon and Other Biogeochemical Cycles, in Climate Change 2013: edited by Stocker et al., *The physical science basis. Contribution of working group I to the fifth assessment report of the intergovernmental panel on climate change* (pp. 1–106).
- Deser, C., Phillips, A., Bourdette, V., & Teng, H. (2012). Uncertainty in climate change projections: the role of internal variability. *Climate Dynamics*, 38(3–4), 527–546. <https://doi.org/10.1007/s00382-010-0977-x>
- DeVries, T. (2014). The oceanic anthropogenic CO_2 sink: Storage, air-sea fluxes, and transports over the industrial era. *Global Biogeochemical Cycles*, 28(7), 631–647. <https://doi.org/10.1002/2013GB004739>
- DeVries, T., Holzer, M., & Primeau, F. (2017). Recent increase in oceanic carbon uptake driven by weaker upper-ocean overturning. *Nature*, 542(7640), 215–218. <https://doi.org/10.1038/nature21068>
- DeVries, T., Le Quéré, C., Andrews, O., Berthet, S., Hauck, J., Ilyina, T., et al. (2019). Decadal trends in the ocean carbon sink. *Proceedings of the National Academy of Sciences*, 116(24), 11646–11651.
- Dickson, A. G., & Millero, F. J. (1987). A comparison of the equilibrium constants for the dissociation of carbonic acid in seawater media. *Deep Sea Research Part A: Oceanographic Research Papers*, 34(10), 1733–1743. [https://doi.org/10.1016/0198-0149\(87\)90021-5](https://doi.org/10.1016/0198-0149(87)90021-5)
- Eddelbar, Y. A., Rodgers, K. B., Long, M. C., Subramanian, A. C., Xie, S. P., & Keeling, R. F. (2019). El Niño–Like Physical and Biogeochemical Ocean Response to Tropical Eruptions. *Journal of Climate*, 32(9), 2627–2649. <https://doi.org/10.1175/JCLI-D-18-0458.1>
- Fassbender, A. J., Sabine, C. L., & Palevsky, H. I. (2017). Nonuniform ocean acidification and attenuation of the ocean carbon sink. *Geophysical Research Letters*, 44(16), 8404–8413. <https://doi.org/10.1002/2017GL074389>
- Fay, A. R., Lovenduski, N. S., McKinley, G. A., Munro, D. R., Sweeney, C., Gray, A. R., et al. (2018). Utilizing the Drake Passage Time-series to understand variability and change in subpolar Southern Ocean $p\text{CO}_2$. *Biogeosciences*, 15(12), 3841–3855. <https://doi.org/10.5194/bg-15-3841-2018>
- Fay, A. R., & McKinley, G. A. (2013). Global trends in surface ocean $p\text{CO}_2$ from in situ data. *Global Biogeochemical Cycles*, 27(2), 541–557. <https://doi.org/10.1002/gbc.20051>
- Fay, A. R., & McKinley, G. A. (2014). Global open-ocean biomes: mean and temporal variability. *Earth System Science Data*, 6(2), 273–284. <https://doi.org/10.5194/essd-6-273-2014>
- Friedlingstein, P., Jones, M. W., O'Sullivan, M., Andrew, R. M., Hauck, J. et al. (2019). Global Carbon Budget 2019, *Earth System Science Data*, 11(4), 1783–1838, DOI: <https://doi.org/10.5194/essd-11-1783-2019>.
- Frölicher, T., Joos, F., & Raible, C. (2011). Sensitivity of atmospheric CO_2 and climate to explosive volcanic eruptions. *Biogeosciences*, 8(8), 2317–2339. <https://doi.org/10.5194/bg-8-2317-2011>
- Gruber, N., Clement, D., Carter, B. R., Feely, R. A., Van Heuven, S., Hoppema, M., et al. (2019b). The oceanic sink for anthropogenic CO_2 from 1994 to 2007. *Science*, 363(6432), 1193–1199. <https://doi.org/10.1126/science.aau5153>
- Gruber, N., Landschützer, P., & Lovenduski, N. S. (2019a). The variable Southern Ocean carbon sink. *Annual Review of Marine Science*, 11(1), 159–186. <https://doi.org/10.1146/annurev-marine-121916-063407>
- Jacobson, A. R., Mikaloff Fletcher, S. E., Gruber, N., Sarmiento, J. L., & Gloor, M. (2007). A joint atmosphere–ocean inversion for surface fluxes of carbon dioxide: 1. Methods and global-scale fluxes. *Global Biogeochemical Cycles*, 21(1), GB1019. <https://doi.org/10.1029/2005GB002556>

- Kwon, E. Y., Primeau, F., & Sarmiento, J. L. (2009). The impact of remineralization depth on the air-sea carbon balance. *Nature Geoscience*, 2(9), 630–635. <https://doi.org/10.1038/NGEO612>
- Landschützer, P., Gruber, N., & Bakker, D. C. (2016). Decadal variations and trends of the global ocean carbon sink. *Global Biogeochemical Cycles*, 30(10), 1396–1417. <https://doi.org/10.1002/2015GB005359>
- Landschützer, P., Gruber, N., Haumann, F. A., Rödenbeck, C., Bakker, D. C., Van Heuven, S., et al. (2015). The reinvigoration of the Southern Ocean carbon sink. *Science*, 349(6253), 1221–1224. <https://doi.org/10.1126/science.aab2620>
- Landschützer, P., Ilyina, T., & Lovenduski, N. S. (2019). Detecting Regional Modes of Variability in Observation-Based Surface Ocean pCO₂. *Geophysical Research Letters*, 46(5), 2670–2679. <https://doi.org/10.1029/2018GL081756>
- Lauvset, S. K., Tjiputra, J., & Muri, H. (2017). Climate engineering and the ocean: effects on biogeochemistry and primary production. *Biogeosciences*, 14(24), 5675–5691. <https://doi.org/10.5194/bg-14-5675-2017>
- Le Quéré, C., Andrew, R. M., Friedlingstein, P., Sitch, S., Hauck, J., Pongratz, J., et al. (2018a). Global carbon budget 2018. *Earth System Science Data (Online)*, 10(4), 2141–2194.
- Le Quéré, C., Andrew, R. M., Friedlingstein, P., Sitch, S., Pongratz, J., Manning, A. C., et al. (2018b). Global carbon budget 2017. *Earth System Science Data*, 10(1), 405–448. <https://doi.org/10.5194/essd-10-405-2018>
- Le Quéré, C., Rödenbeck, C., Buitenhuis, E. T., Conway, T. J., Langenfelds, R., Gomez, A., et al. (2007). Saturation of the Southern Ocean CO₂ sink due to recent climate change. *Science*, 316(5832), 1735–1738. <https://doi.org/10.1126/science.1136188>
- Lovenduski, N. S., Gruber, N., & Doney, S. C. (2008). Toward a mechanistic understanding of the decadal trends in the Southern Ocean carbon sink. *Global Biogeochemical Cycles*, 22(3). <https://doi.org/10.1029/2007GB003139>
- Lovenduski, N. S., Gruber, N., Doney, S. C., & Lima, I. D. (2007). Enhanced CO₂ outgassing in the Southern Ocean from a positive phase of the Southern Annular Mode. *Global Biogeochemical Cycles*, 21(2). <https://doi.org/10.1029/2006GB002900>
- Lovenduski, N. S., Harrison, C. S., Olivarez, H., Bardeen, C. G., Toon, O. B., Coupe, J., et al. (2020). The Potential Impact of Nuclear Conflict on Ocean Acidification. *Geophysical Research Letters*, 116(2), 357–372. <https://doi.org/10.1007/s10584-012-0475-8>
- Lovenduski, N. S., Yeager, S. G., Lindsay, K., & Long, M. C. (2019). Predicting near-term variability in ocean carbon uptake. *Earth System Dynamics*, 10(1), 45–57. <https://doi.org/10.5194/esd-10-45-2019>
- Lucht, W., Prentice, I. C., Myneni, R. B., Sitch, S., Friedlingstein, P., Cramer, W., et al. (2002). Climatic control of the high-latitude vegetation greening trend and Pinatubo effect. *Science*, 296(5573), 1687–1689. <https://doi.org/10.1126/science.1071828>
- McKinley, G. A., Fay, A. R., Lovenduski, N. S., & Pilcher, D. J. (2017). Natural variability and anthropogenic trends in the ocean carbon sink. *Annual Review of Marine Science*, 9(1), 125–150. <https://doi.org/10.1146/annurev-marine-010816-060529>
- McKinley, G. A., Pilcher, D. J., Fay, A. R., Lindsay, K., Long, M. C., & Lovenduski, N. S. (2016). Timescales for detection of trends in the ocean carbon sink. *Nature*, 530(7591), 469–472. <https://doi.org/10.1038/nature16958>
- Mehrbach, C., Culbertson, C. H., Hawley, J. E., & Pytkowicz, R. M. (1973). Measurement of the apparent dissociation constants of carbonic acid in seawater at atmospheric pressure 1. *Limnology and Oceanography*, 18(6), 897–907. <https://doi.org/10.4319/lo.1973.18.6.0897>
- Peters, G. P., Andrew, R. M., Canadell, J. G., Fuss, S., Jackson, R. B., Korsbakken, J. I., et al. (2017). Key indicators to track current progress and future ambition of the Paris Agreement. *Nature Climate Change*, 7(2), 118–122. <https://doi.org/10.1038/nclimate3202>
- Randerson, J. T., Lindsay, K., Munoz, E., Fu, W., Moore, J. K., Hoffman, F. M., et al. (2015). Multicentury changes in ocean and land contributions to the climate-carbon feedback. *Global Biogeochemical Cycles*, 29(6), 744–759. <https://doi.org/10.1002/2014GB005079>
- Rödenbeck, C., Bakker, D. C., Gruber, N., Iida, Y., Jacobson, A. R., Jones, S., et al. (2015). Data-based estimates of the ocean carbon sink variability—first results of the Surface Ocean pCO₂ Mapping intercomparison (SOCOM). *Biogeosciences*, 12(23), 7251–7278. <https://doi.org/10.5194/bg-12-7251-2015>
- Rödenbeck, C., Keeling, R. F., Bakker, D. C., Metzl, N., Olsen, A., Sabine, C., & Heimann, M. (2013). Global surface-ocean p(CO₂) and sea-air CO₂ flux variability from an observation-driven ocean mixed-layer scheme.
- Sarmiento, J. L. (1993). Carbon-Cycle - Atmospheric CO₂ Stalled. *Nature*, 365(6448), 697–698. <https://doi.org/10.1038/365697a0>
- Sarmiento, J. L., Gloor, M., Gruber, N., Beaulieu, C., Jacobson, A. R., Mikaloff Fletcher, S. E., et al. (2010). Trends and regional distributions of land and ocean carbon sinks. *Biogeosciences*, 7(8), 2351–2367. <https://doi.org/10.5194/bg-7-2351-2010>
- Sarmiento, J. L., & Gruber, N. (2006). *Ocean biogeochemical dynamics*. Princeton, NJ: Princeton University Press. <https://doi.org/10.1515/9781400849079>
- Wanninkhof, R. (2014). Relationship between wind speed and gas exchange over the ocean revisited. *Limnology and Oceanography: Methods*, 12(6), 351–362.

References From the Supporting Information

- Buitenhuis, E. T., Rivkin, R. B., Sailley, S., & Le Quéré, C. (2010). Biogeochemical fluxes through microzooplankton. *Global Biogeochemical Cycles*, 24(4), n/a. <https://doi.org/10.1029/2009GB003601>
- Canadell, J. G., Ciais, P., Gurney, K., Le Quéré, C., Piao, S., Raupach, M. R., & Sabine, C. L. (2011). An international effort to quantify regional carbon fluxes. *Eos, Transactions American Geophysical Union*, 92(10), 81–82. <https://doi.org/10.1029/2011EO100001>
- Denvil-Sommer, A., Gehlen, M., Vrac, M., & Mejia, C. (2019). LSCE-FFNN-v1: a two-step neural network model for the reconstruction of surface ocean pCO₂ over the global ocean. *Geoscientific Model Development*, 12(5), 2091–2105. <https://doi.org/10.5194/gmd-12-2091-2019>
- Dickson, A. G., Sabine, C. L., and Christian, J. R. (Eds.): Guide to Best Practices for Ocean CO₂ Measurements, PICES Special Publication, IOCCP Report No. 8, 2007. 8825.
- Druglakenky, E.J., Thoning, K.W., Lang, P.M., Tans, P.P. (2017). NOAA Greenhouse Gas Reference from Atmospheric Carbon Dioxide Dry Air Mole Fractions from the NOAA ESRL Carbon Cycle Cooperative Global Air Sampling Network.
- Doney, S. C., Lima, I., Feely, R. A., Glover, D. M., Lindsay, K., Mahowald, N., et al. (2009). Mechanisms governing interannual variability in upper-ocean inorganic carbon system and air-sea CO₂ fluxes: Physical climate and atmospheric dust. *Deep Sea Research Part II: Topical Studies in Oceanography*, 56(8–10), 640–655. <https://doi.org/10.1016/j.dsr2.2008.12.006>
- Gregor, L., Lebehot, A. D., Kok, S., & Monteiro, P. M. S. (2019). A comparative assessment of the uncertainties of global surface ocean CO₂ estimates using a machine learning ensemble (CSIR-ML6 version 2019a) – have we hit the wall? *Geoscientific Model Development Discussion*, 12(12), 5113–5136. <https://doi.org/10.5194/gmd-12-5113-2019>
- Gruber, N., Gloor, M., Mikaloff Fletcher, S. E., Doney, S. C., Dutkiewicz, S., Follows, M. J., et al. (2009). Oceanic sources, sinks, and transport of atmospheric CO₂. *Global Biogeochemical Cycles*, 23(1), n/a. <https://doi.org/10.1029/2008GB003349>

- Hauck, J., Lenton, A., Langlais, C., & Matear, R. (2018). The fate of carbon and nutrients exported out of the Southern Ocean. *Global Biogeochemical Cycles*, 32(10), 1556–1573. <https://doi.org/10.1029/2018GB005977>
- Kalnay, E., Kanamitsu, M., Kistler, R., Collins, W., Deaven, D., Gandin, L., et al. (1996). The NCEP/NCAR 40-year reanalysis project. *Bulletin of the American Meteorological Society*, 77(3), 437–471. [https://doi.org/10.1175/1520-0477\(1996\)077<0437:TNYRP>2.0.CO;2](https://doi.org/10.1175/1520-0477(1996)077<0437:TNYRP>2.0.CO;2)
- Landschützer, P., Gruber, N., Bakker, D. C. E., & Landschützer, P. (2017). An updated Observation-Based Global Monthly Gridded Sea Surface pCO₂ and Air-sea CO₂ Flux Product from 1982 Through 2015 and Its Monthly Climatology. *NCEI Accession*, 160558.
- Naegler, T., Ciais, P., Rodgers, K., & Levin, I. (2006). Excess radiocarbon constraints on air-sea gas exchange and the uptake of CO₂ by the oceans. *Geophysical Research Letters*, 33(11), L11802. <https://doi.org/10.1029/2005GL025408>
- Paulsen, H., Ilyina, T., Six, K. D., & Stemmler, I. (2017). Incorporating a prognostic representation of marine nitrogen fixers into the global ocean biogeochemical model HAMOCC. *Journal of Advances in Modeling Earth Systems*, 9(1), 438–464. <https://doi.org/10.1002/2016MS000737>
- Reynolds, R. W., Rayner, N. A., Smith, T. M., Stokes, D. C., & Wang, W. (2002). An improved in situ and satellite SST analysis for climate. *Journal of Climate*, 15(13), 1609–1625. [https://doi.org/10.1175/1520-0442\(2002\)015<1609:AIISAS>2.0.CO;2](https://doi.org/10.1175/1520-0442(2002)015<1609:AIISAS>2.0.CO;2)
- Schwinger, J., Goris, N., Tjiputra, J. F., Kriest, I., Bentsen, M., Bethke, I., et al. (2016). Evaluation of NorESM-OC (versions 1 and 1.2), the ocean carbon-cycle stand-alone configuration of the Norwegian Earth System Model (NorESM1). *Geoscientific Model Development*, 9(8), 2589–2622. <https://doi.org/10.5194/gmd-9-2589-2016>
- Séférian, R., Delire, C., Decharme, B., Voldoire, A., y Melia, D. S., Chevallier, M., et al. (2016). Development and evaluation of CNRM Earth system model–CNRM-ESM 1.
- Takahashi, T., Sutherland, S., Wanninkhof, R., Sweeney, C., Feely, R., Chipman, D., et al. (2009). Climatological mean and decadal change in surface ocean pCO₂, and net sea–air CO₂ flux over the global oceans. *Deep-Sea Research Part II*, 56(8–10), 554–577. <https://doi.org/10.1016/j.dsr2.2008.12.009>