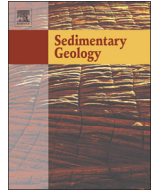




Contents lists available at ScienceDirect

Sedimentary Geology

journal homepage: www.elsevier.com/locate/sedgeo



Corrigendum

Corrigendum to “Upper Cretaceous to Palaeogene successions of the Gouaro anticline: Deepwater sedimentary records of the tectonic events that led to obduction in New Caledonia (SW Pacific)” [Sediment. Geol. 415 (2021) 105818]



Aurélien Bordenave ^{a,b,c,*}, Samuel Etienne ^b, Julien Collot ^b, Philippe Razin ^c, Martin Patriat ^d, Carine Grélaud ^c, Claudia Agnini ^e, Hugh Morgans ^f, Flora Guillemaut ^c, Armand Moreau ^c

^a ADECAL Technopole, 1bis rue Berthelot, BP 2384, 98845 Nouméa, New Caledonia

^b Geological Survey of New Caledonia (DIMENC), BP465, 98845 Nouméa Cedex, New Caledonia

^c Université Bordeaux Montaigne/EA 4592 Géoressources & Environnement, 1 allée Fernand Daguin, 33607 Pessac Cedex, France

^d IFREMER - Centre Bretagne - ZI de la Pointe du Diable, CS 10070, 29280 Plouzané, France

^e Department of Geosciences, University of Padova, Padova, Italy

^f GNS Science, Lower Hutt, New Zealand

The authors regret that Figs. 4, 8, and 15 provided in this article are from the unrevised version and do not contain modifications brought during the revision process. The correct figures are provided below.

The authors would like to apologise for any inconvenience caused.

DOI of original article: <https://doi.org/10.1016/j.sedgeo.2020.105818>.

* Corresponding author at: Université Bordeaux Montaigne/EA 4592 Géoressources & Environnement, 1 allée Fernand Daguin, 33607 Pessac Cedex, France.

E-mail address: aurelien.bordenave@bordeaux-inp.fr (A. Bordenave).

<https://doi.org/10.1016/j.sedgeo.2021.106008>

0037-0738/© 2021 Elsevier B.V. All rights reserved.

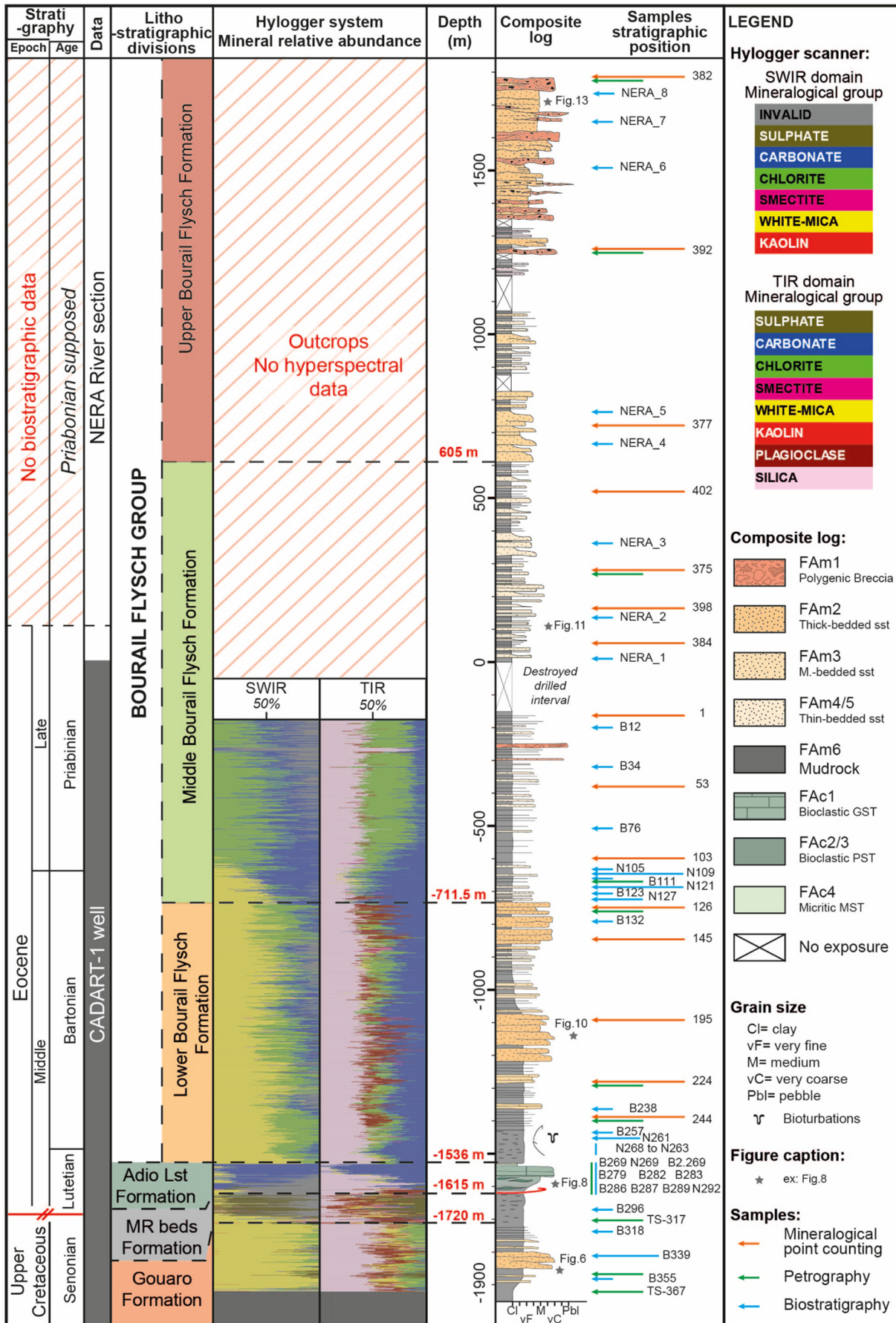


Fig. 4.

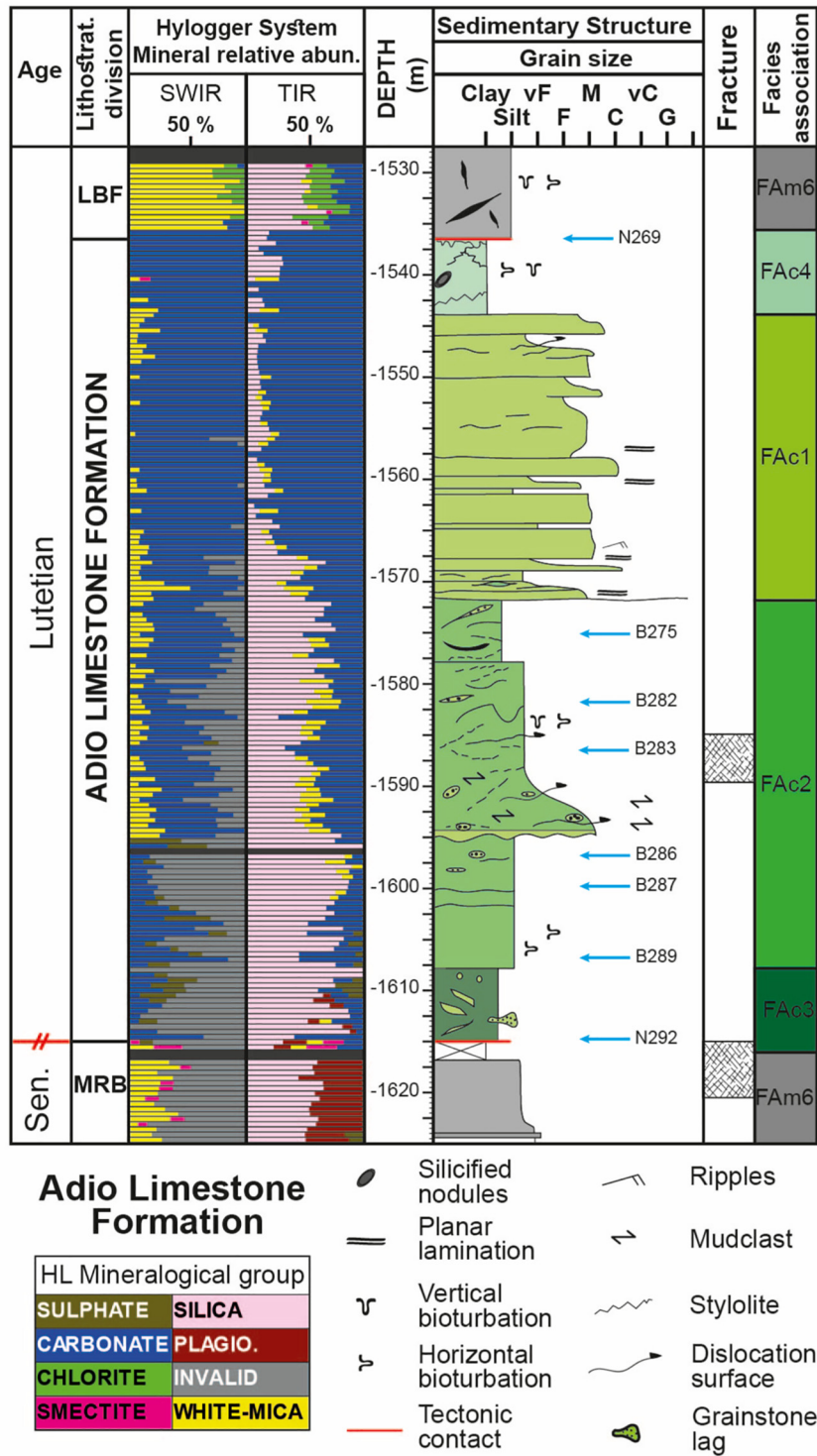


Fig. 8.

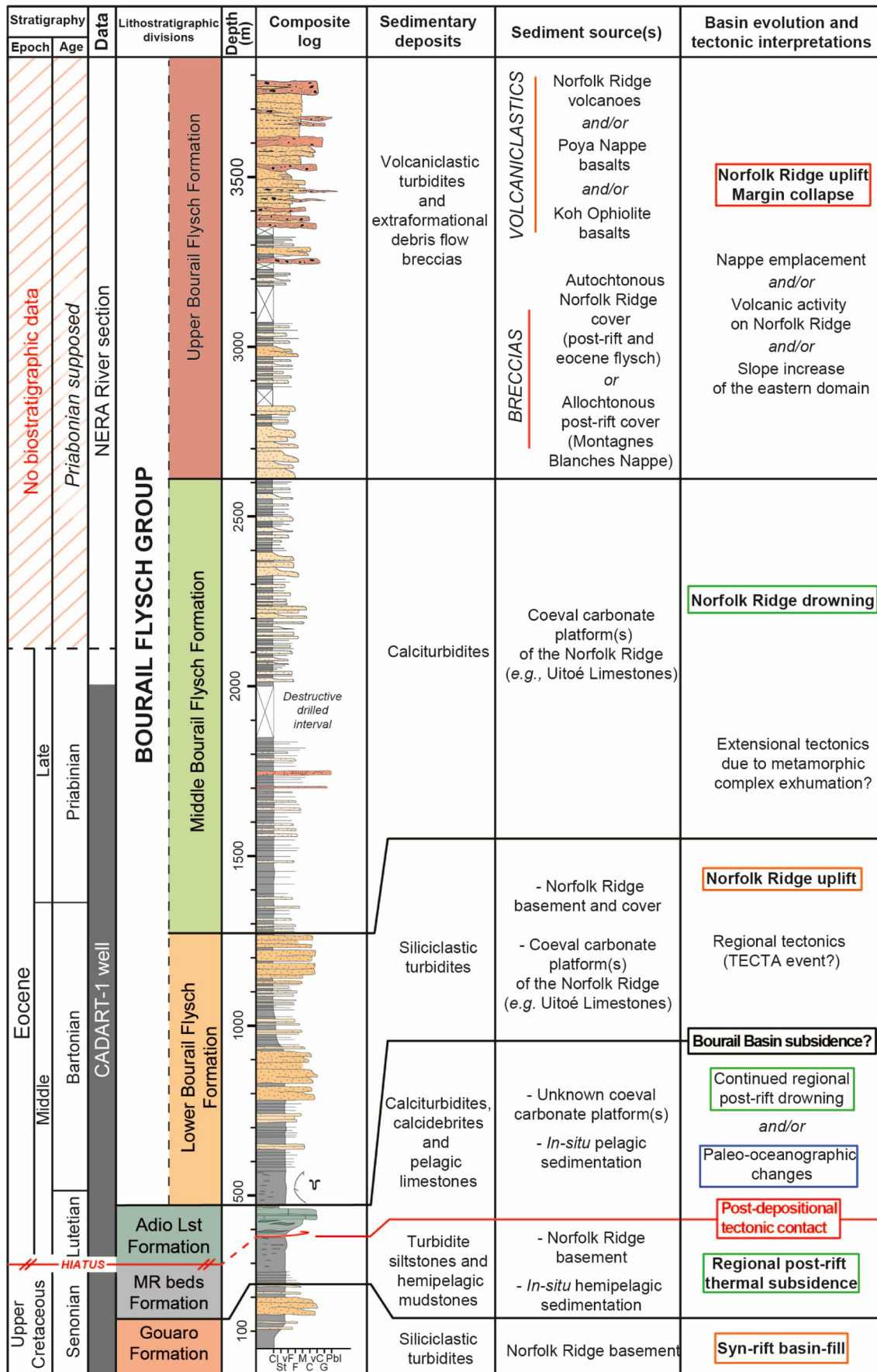


Fig. 15.