

<Supplementary Materials>

A Multi-Elements Isotope Approach to Assess the Geographic Provenance of Manila Clams (*Ruditapes philippinarum*) via Recombining Appropriate Elements

Eun-Ji Won, Seung Hee Kim, Young-Shin Go, K. Suresh Kumar, Min-Seob Kim, Suk-Hee Yoon, Germain Bayon, Jung-Hyun Kim, Kyung-Hoon Shin

Supplementary Figures

Figure S1. Scatter plots for $\delta^{13}\text{C}$ and $\delta^{15}\text{N}$ values for clam samples collected from China, DPR Korea and Korea	1
Figure S2. Grouping of Manila clams from three countries based on LDA analysis of $\delta^{13}\text{C}$, $\delta^{15}\text{N}$, $\delta^{18}\text{O}$, and δD . Bold italics indicate the specimens were not well identified by geographic origin	2
Figure S3. Grouping of Manila clams from three countries based on LDA analysis of $\delta^{13}\text{C}$, $\delta^{15}\text{N}$, δD , and $\delta^{34}\text{S}$. Bold italics indicate the specimens were not well identified by geographic origin	3
Figure S4. Grouping of Manila clams from three countries based on LDA analysis of $\delta^{13}\text{C}$, $\delta^{15}\text{N}$, $\delta^{18}\text{O}$, δD , and $\delta^{34}\text{S}$. Bold italics indicate the specimens were not well identified by geographic origin	4
Figure S5. Grouping of Manila clams from three countries based on LDA analysis of $\delta^{13}\text{C}$, $\delta^{15}\text{N}$, δD , $\delta^{34}\text{S}$, and $^{87}\text{Sr}/^{86}\text{Sr}$. Bold italics indicate the specimens were not well identified by geographic origin	5
Figure S6. Grouping of Manila clams from three countries based on LDA analysis of $\delta^{13}\text{C}$, $\delta^{15}\text{N}$, δD , $\delta^{18}\text{O}$, $\delta^{34}\text{S}$, and $^{87}\text{Sr}/^{86}\text{Sr}$. Bold italics indicate the specimens were not well identified by geographic origin	6
Figure S7. Grouping of Manila clams from three countries based on LDA analysis of $\delta^{13}\text{C}$, $\delta^{15}\text{N}$, δD , $\delta^{18}\text{O}$, $\delta^{34}\text{S}$, and δNd . Bold italics indicate the specimens were not well identified by geographic origin	7
Figure S8. Grouping of Manila clams from three countries based on LDA analysis of $\delta^{13}\text{C}$, $\delta^{15}\text{N}$, δD , $\delta^{18}\text{O}$, $\delta^{34}\text{S}$, δNd , and $^{87}\text{Sr}/^{86}\text{Sr}$. Bold italics indicate the specimens were not well identified by geographic origin	8

*Corresponding author. E-mail: shinkh@hanyang.ac.kr; Tel.: +82-31-400-5536 (K.-H. Shin).

Supplementary Figures

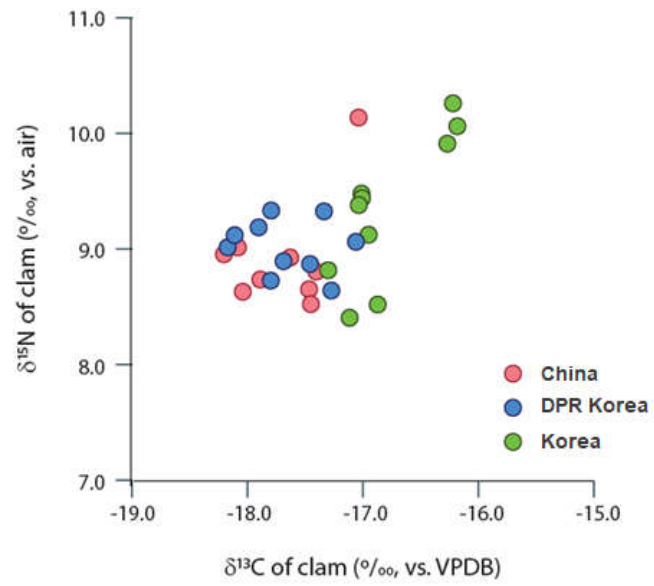


Figure S1. Scatter plots for $\delta^{13}\text{C}$ and $\delta^{15}\text{N}$ values for clam samples collected from China, DPR Korea and Korea

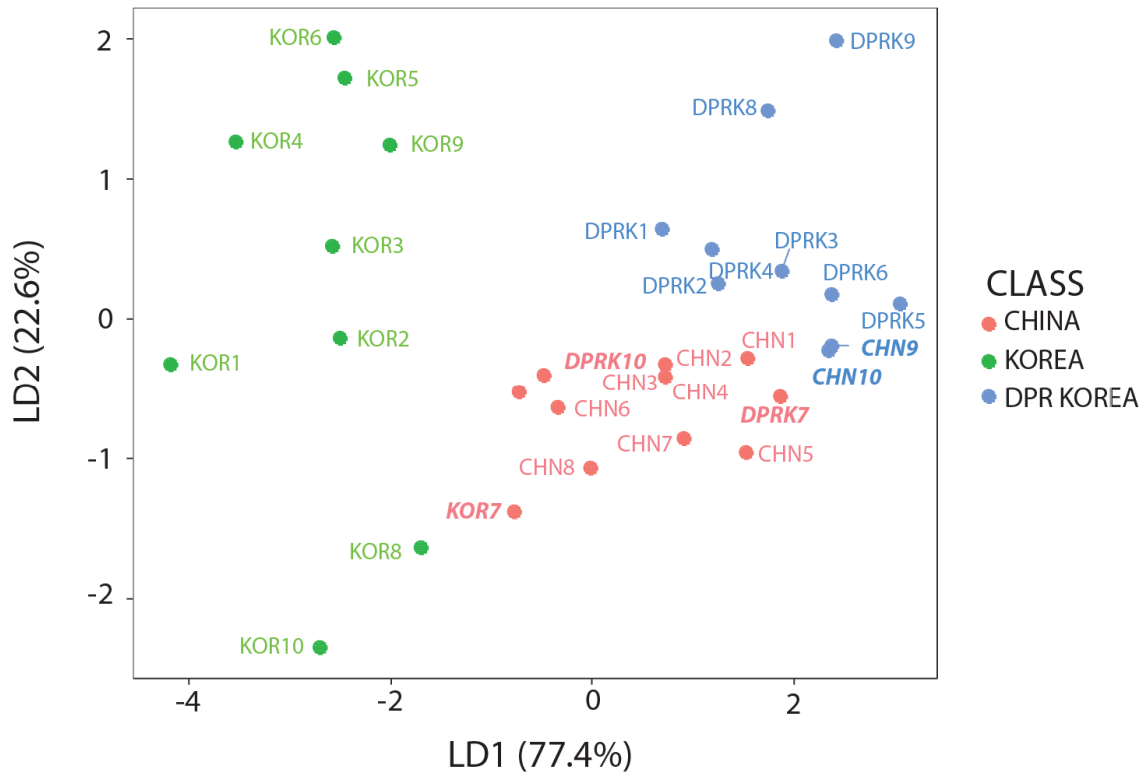


Figure S2. Grouping of Manila clams from three countries based on LDA analysis of $\delta^{13}\text{C}$, $\delta^{15}\text{N}$, $\delta^{18}\text{O}$, and δD . Bold italics indicate the specimens were not well identified by geographic origin

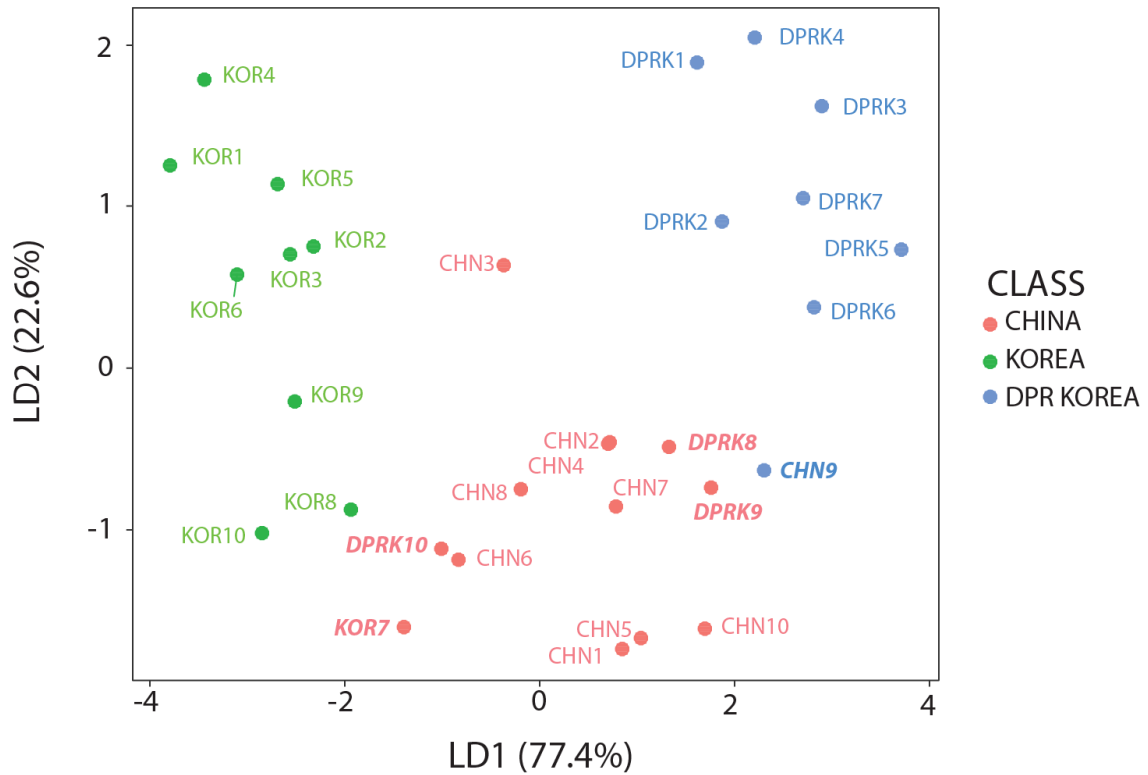


Figure S3. Grouping of Manila clams from three countries based on LDA analysis of $\delta^{13}\text{C}$, $\delta^{15}\text{N}$, δD , $\delta^{34}\text{S}$. Bold italics indicate the specimens were not well identified by geographic origin

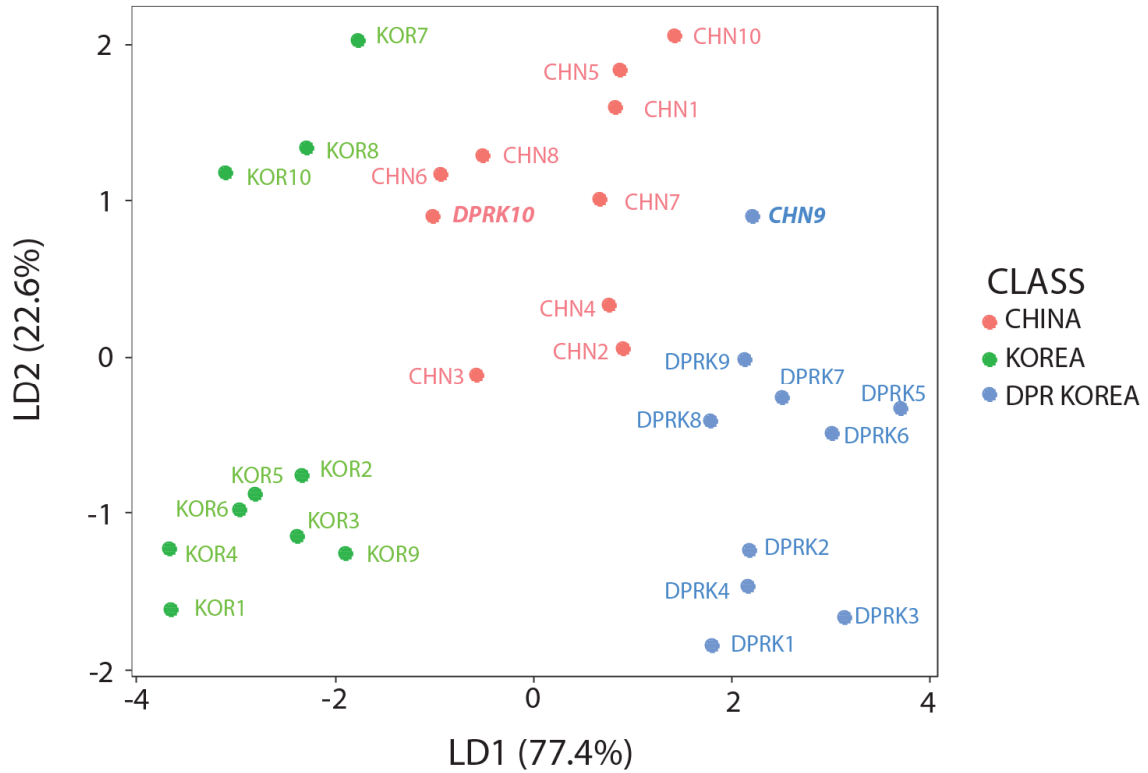


Figure S4. Grouping of Manila clams from three countries based on LDA analysis of $\delta^{13}\text{C}$, $\delta^{15}\text{N}$, $\delta^{18}\text{O}$, δD , and $\delta^{34}\text{S}$. Bold italics indicate the specimens were not well identified by geographic origin

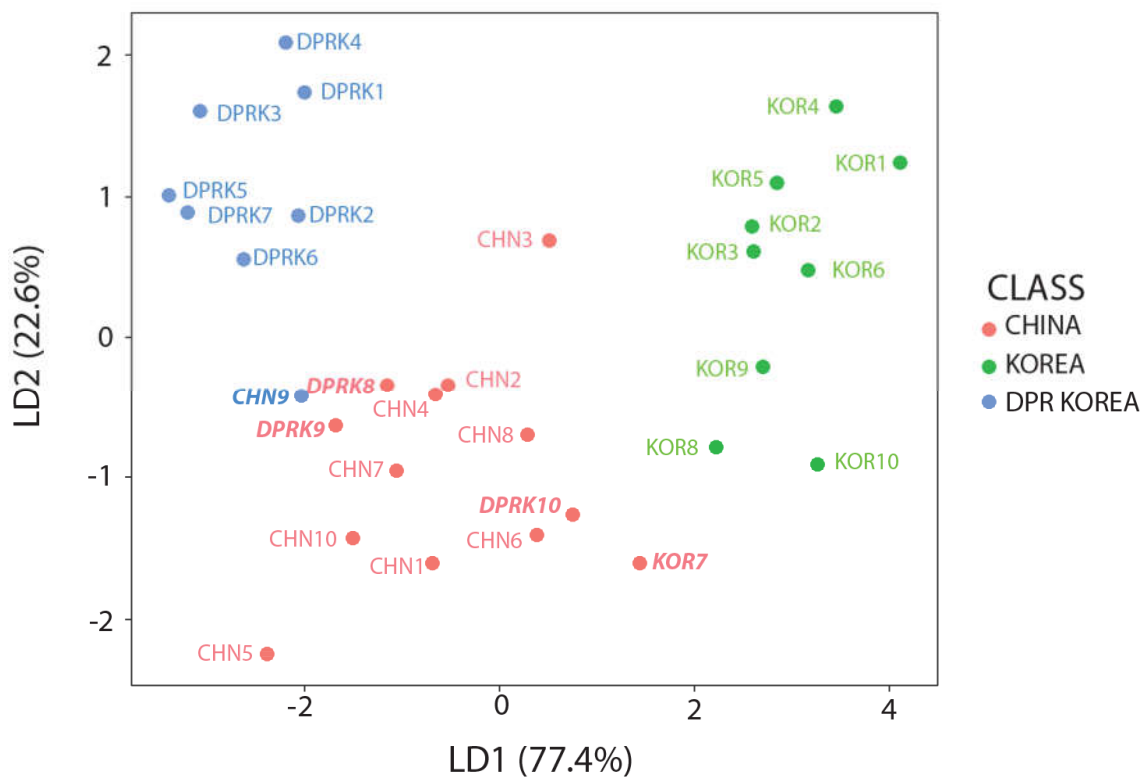


Figure S5. Grouping of Manila clams from three countries based on LDA analysis of $\delta^{13}\text{C}$, $\delta^{15}\text{N}$, δD , $\delta^{34}\text{S}$, and $^{87}\text{Sr}/^{86}\text{Sr}$. Bold italics indicate the specimens were not well identified by geographic origin

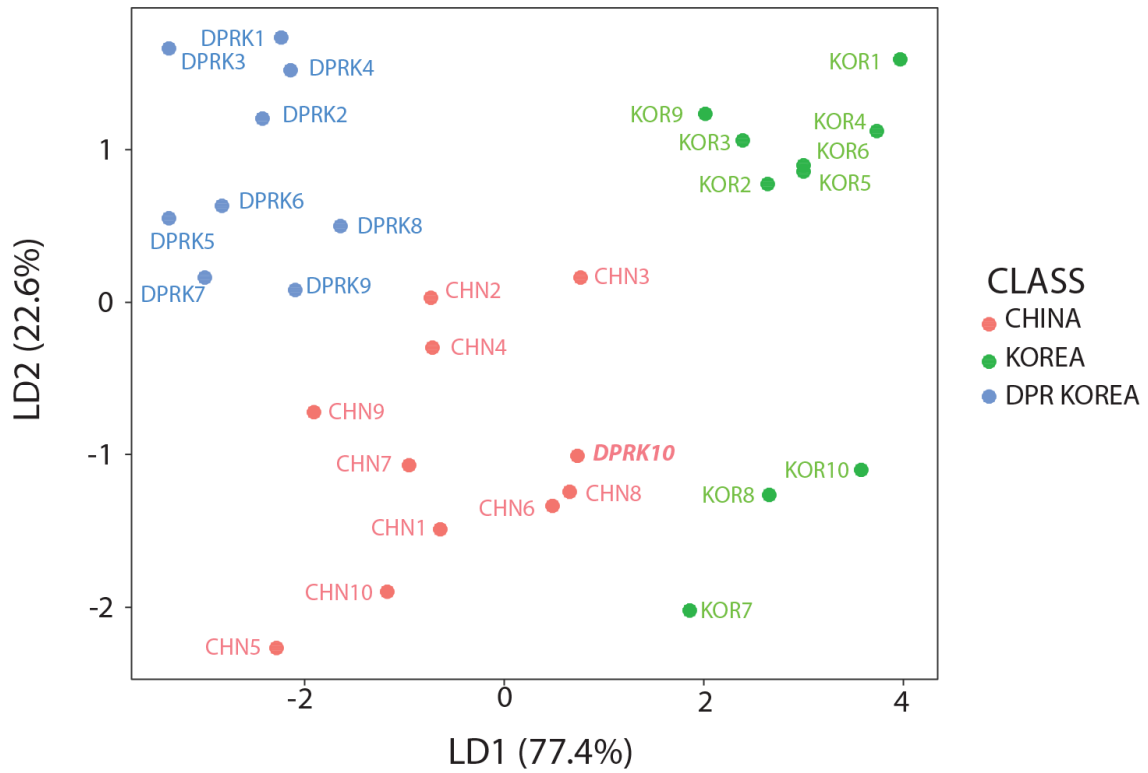


Figure S6. Grouping of Manila clams from three countries based on LDA analysis of $\delta^{13}\text{C}$, $\delta^{15}\text{N}$, δD , $\delta^{18}\text{O}$, $\delta^{34}\text{S}$, and $^{87}\text{Sr}/^{86}\text{Sr}$. Bold italics indicate the specimens were not well identified by geographic origin

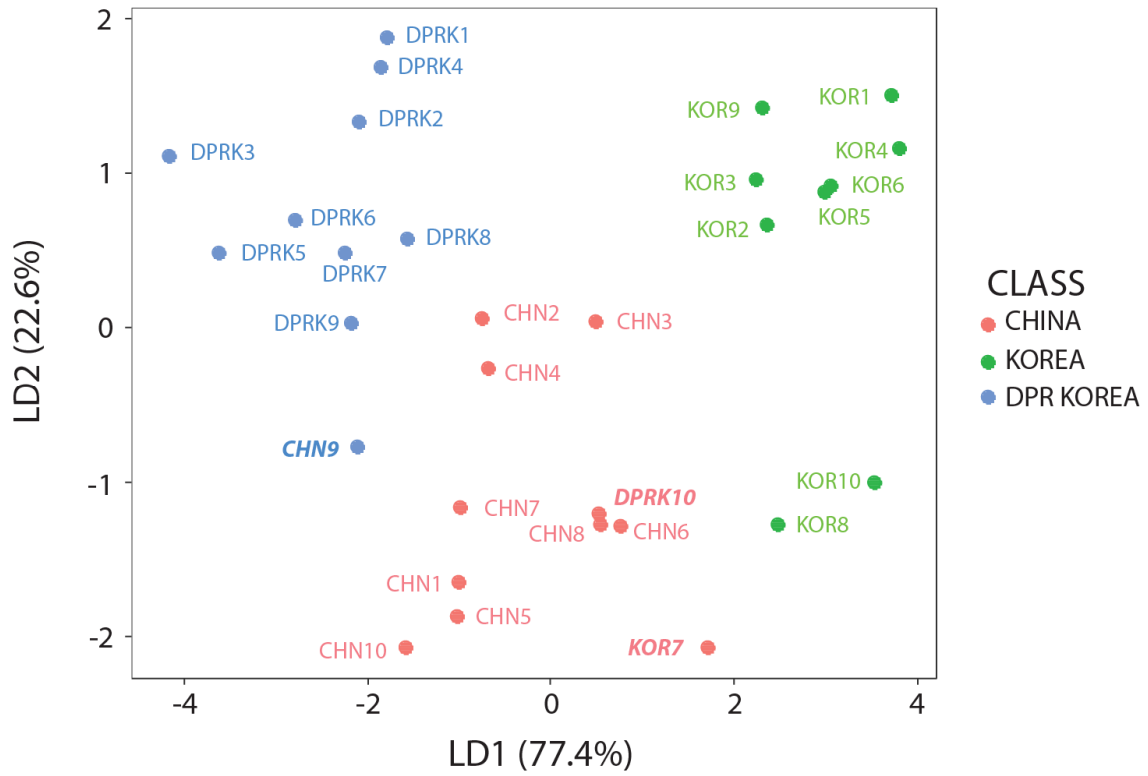


Figure S7. Grouping of Manila clams from three countries based on LDA analysis of $\delta^{13}\text{C}$, $\delta^{15}\text{N}$, δD , $\delta^{18}\text{O}$, $\delta^{34}\text{S}$, and ϵNd . Bold italics indicate the specimens were not well identified by geographic origin

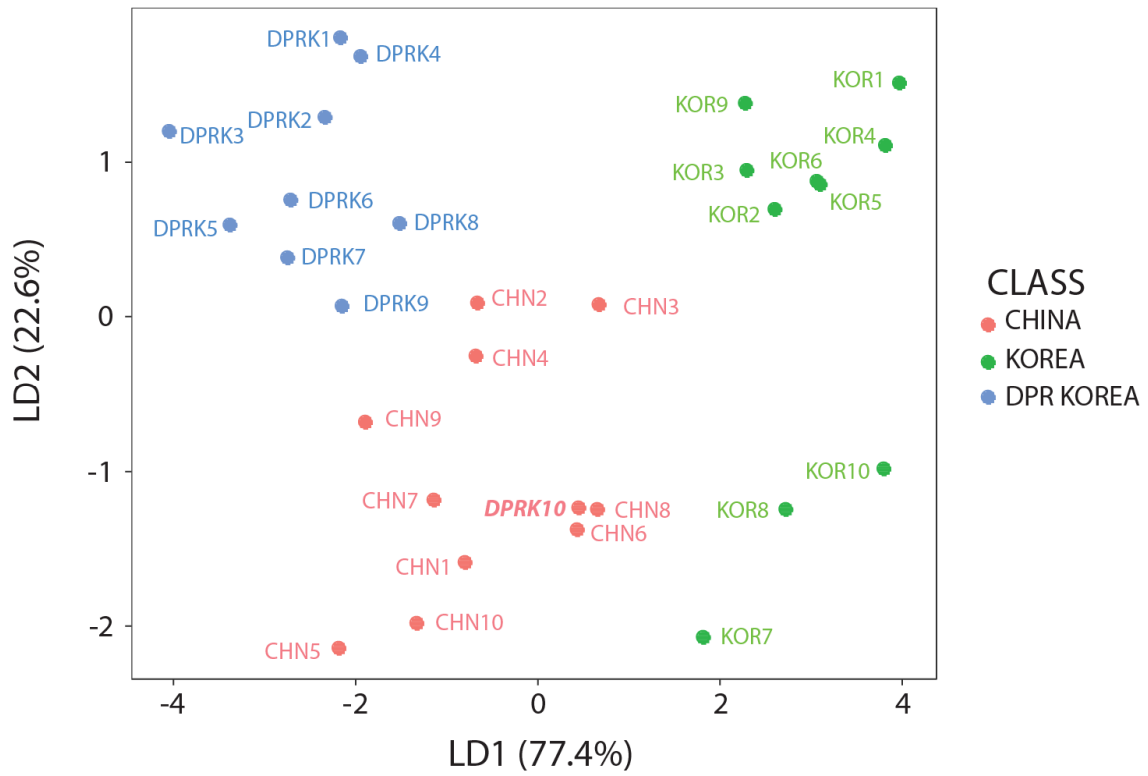


Figure S8. Grouping of Manila clams from three countries based on LDA analysis of $\delta^{13}\text{C}$, $\delta^{15}\text{N}$, δD , $\delta^{18}\text{O}$, $\delta^{34}\text{S}$, ϵNd , and $^{87}\text{Sr}/^{86}\text{Sr}$. Bold italics indicate the specimens were not well identified by geographic origin