

## FISHERS' WORDS

*Ifremer is always at our side, they speak for us!*



*For us, Ifremer is a scientific organization, they watch the sea, we know that the sea is in good hands.*

*I think that for me and many of my colleagues it is positive.*

- Indeed, ObsDeb is an action of the **Ifremer Fisheries Information System**. This is a national scientific network for the observation of resources and all the fishing fleets, which provides knowledge for research and expertise for sustainable fisheries.

**Thanks** to the fishing professionals for their participation!

For any question: [harmonie@ifremer.fr](mailto:harmonie@ifremer.fr) | [www.ifremer.fr/sih](http://www.ifremer.fr/sih)



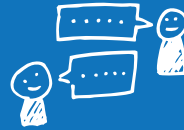
# Get involved in the ObsDeb program!

- **Observation of small-scale commercial vessels landings in outermost region**





Be a **volunteer**



Contribute to an **objective view** of fishing activity and resources

## PARTICIPATE IN THE OBSERVATION OF LANDINGS AND...



Contribute to the **sustainability** and **viability** of your business



Play a **role** in the **sustainable exploitation** of the marine environment



## WHAT IS THE OBSDEB PROGRAM?

**It is an observation in harbours of vessels less than 12m landings after fishing trips, in 5 French overseas regions: French Guiana, Guadeloupe, Martinique, La Réunion and Mayotte.**

For vessels in the "Community Fleet register", it makes it possible to estimate:

- fishing effort (number of trips)
- quantities and values of species landed
- the costs of the trip by metier

**From a sample of landings to estimation of landings by gear/metier and fleet**

During the landing, the observers:



### STUDY

**catches landed:**  
species composition,  
quantities, values



### TALK

**about the fishing trip WITH THE FISHERMAN:**

- start and end dates,
- fishing area,
- duration of fishing by gear/metier,
- costs of the trip,
- previous daily activity



**Data are extrapolated considering the annual census of the fleet activity**

# WHAT IS THE OBSERVERS ROLE?



## They observe, not control

They have received scientific training in fishing, species recognition, sampling, data entry, etc. They monitor the fishing activity in a neutral manner and ensure the confidentiality of information collected.



## For over 10 years, they have been...

- observing a sample of landings
- weighing or counting the catch with the fishers' agreement
- discussing their activity



## How?

Each observer follows a **weekly sampling plan** including fishing harbours where the data have to be collected.



In some regions, these field observations are supplemented by **telephone surveys** to reach a wider number of fishers and thus increase the representativeness of the sample.

### Metier practised:

fishing time, gears and fishing areas during the trip.

### Questions to fishers



Method and scientific rigour of observers

### Trip costs:

fuel consumed, oil, ice, bait, provisioning.

Activity in previous days: metier practised.

### Landed catches:

quantities by species, condition and presentation, trade channels and average selling price.



# WHY COLLECT DATA?

Each Member State of the European Union must provide data on fishing as part of the Common Fisheries Policy (CFP). Ifremer is mandated by the Directorate of Maritime Fisheries and Aquaculture (DPMA) to collect these data:

These data then allow decision-makers to **manage regional fisheries resources and fleets** and **adapt measures** to the sector according to changes.



To know **fishing effort by metier**



To study **variations in catches** and better understand **changes in the abundance of species**



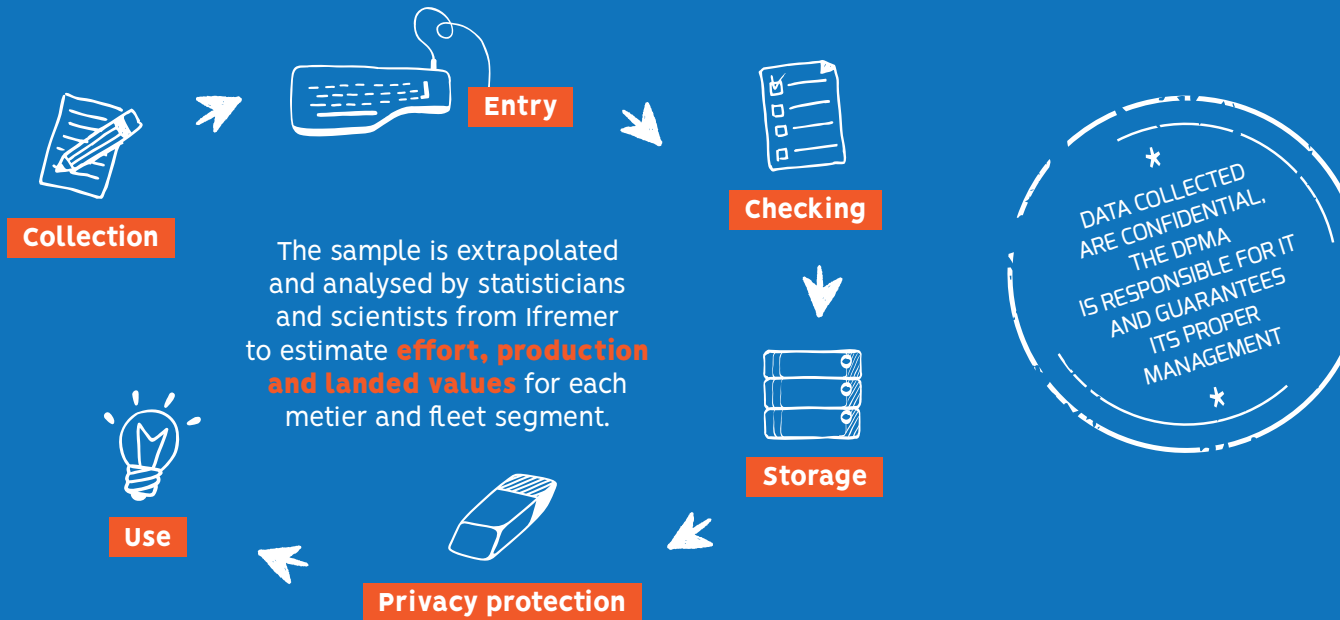
To estimate **quantities and values landed** by species

In the outermost regions, the fishing fleets have a large number of vessels less than 12m and non-geolocated, which are very geographically dispersed and have strong variations in activity. Currently, declarative fishing data are incomplete.

**Therefore, this programme aims to compensate for this lack of information to monitor the fishing development according to trade and species.**



# WHAT HAPPENS TO THE DATA?



# HOW ARE THEY USED?

For each region, every year, reports on the trades and fleets presenting the efforts and species landed are produced and sent to the DPMA, then made available to fishermen and the public at large.

**To give**  
**indicators on fisheries**  
for all stakeholders  
in the fisheries sector

**To lead**  
Ifremer's **research programmes, advisory and expert missions**  
on key topics for fisheries

**To inform**  
the **general public**

Only anonymous data compiled at the level of a set of several vessels can be disseminated by Ifremer. No individual or nominative assessment per vessel is produced.

