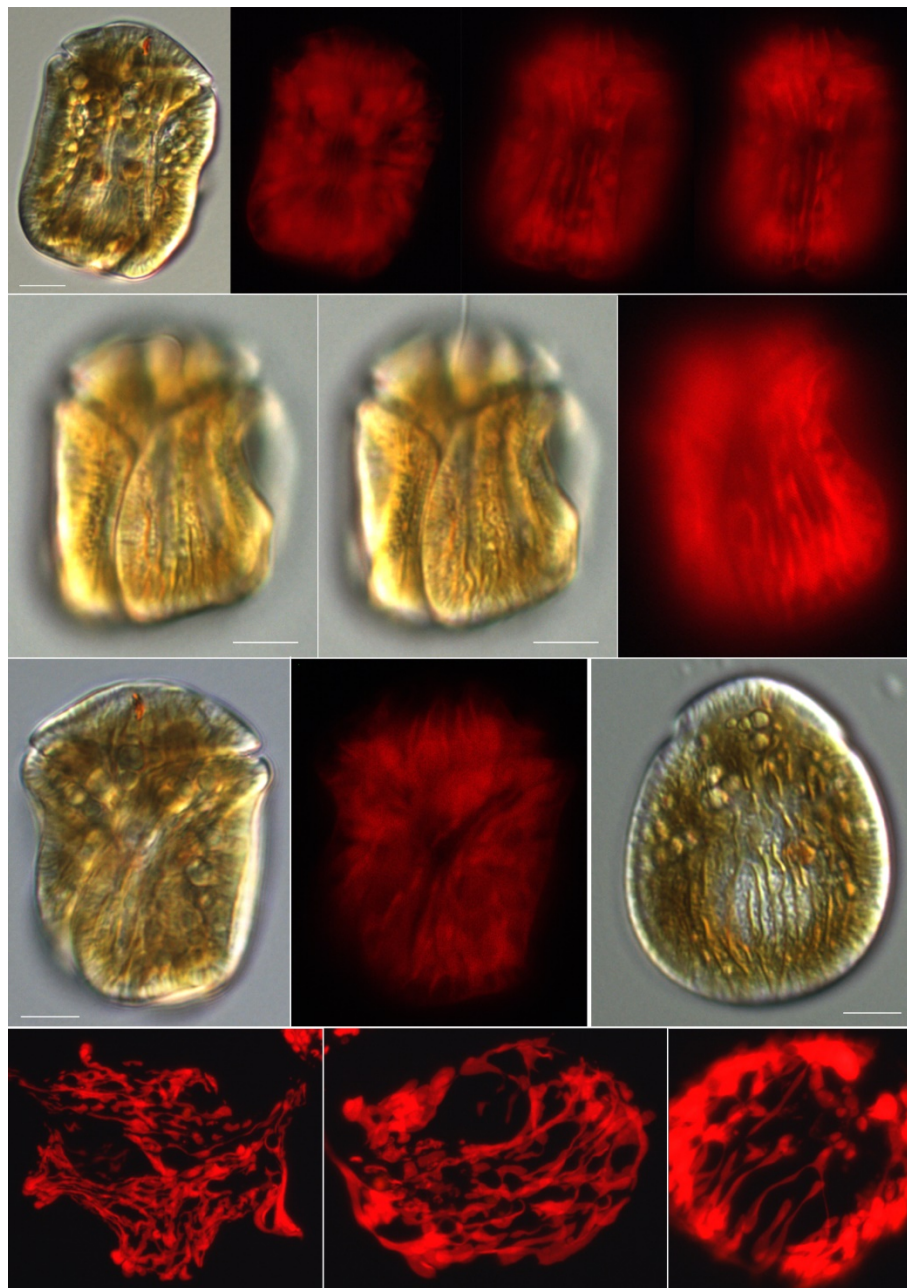


Morphology and molecular phylogeny of *Bindiferia gen. nov.* (Dinophyceae), a new marine, sand-dwelling dinoflagellate genus formerly classified within *Amphidinium*

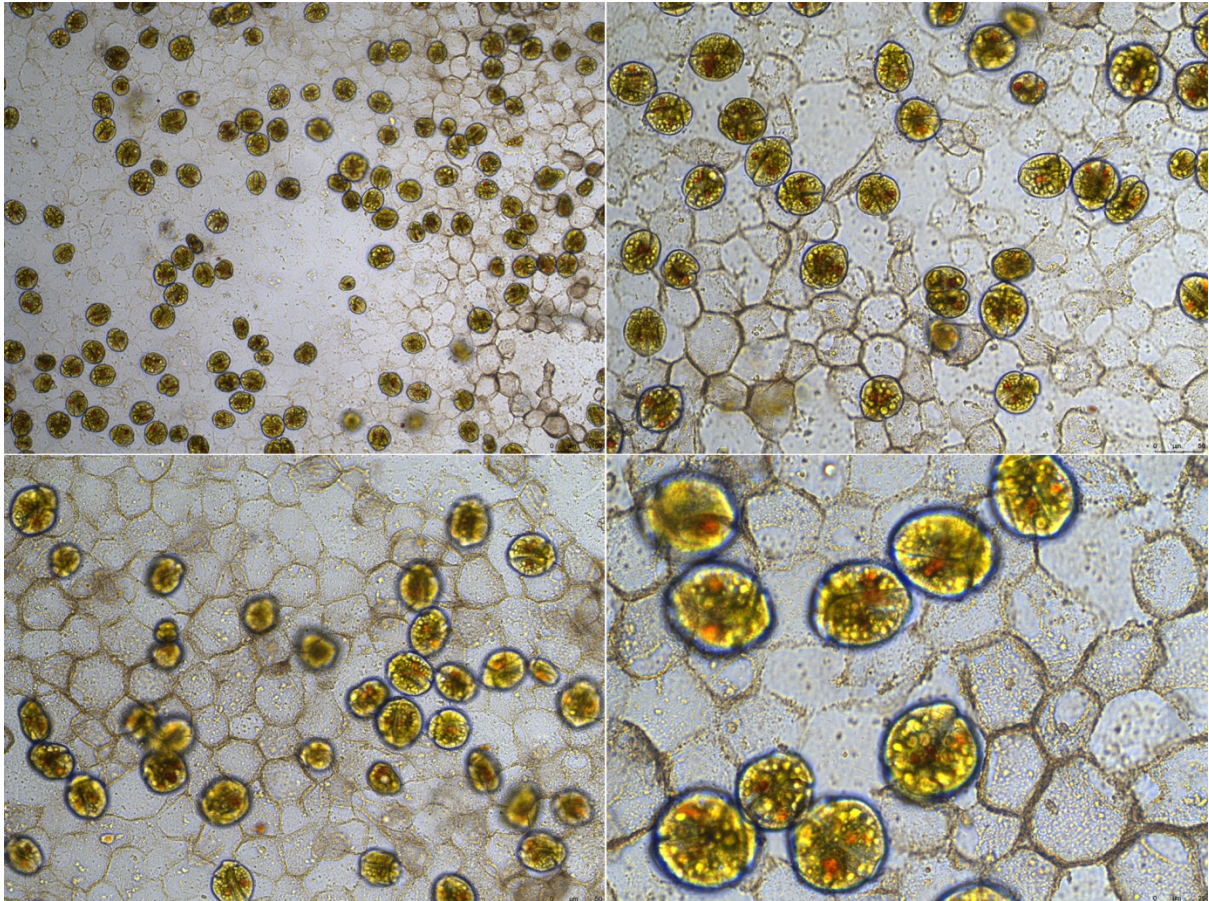
NADINE BORCHHARDT, NICOLAS CHÓMERAT, GWENAEL BILIEN, FRÉDÉRIC ZENTZ, LESLEY RHODES,  
SHAUNA A. MURRAY AND MONA HOPPENRATH SUPPLEMENTARY INFORMATION

**SUPPLEMENTARY INFORMATION**

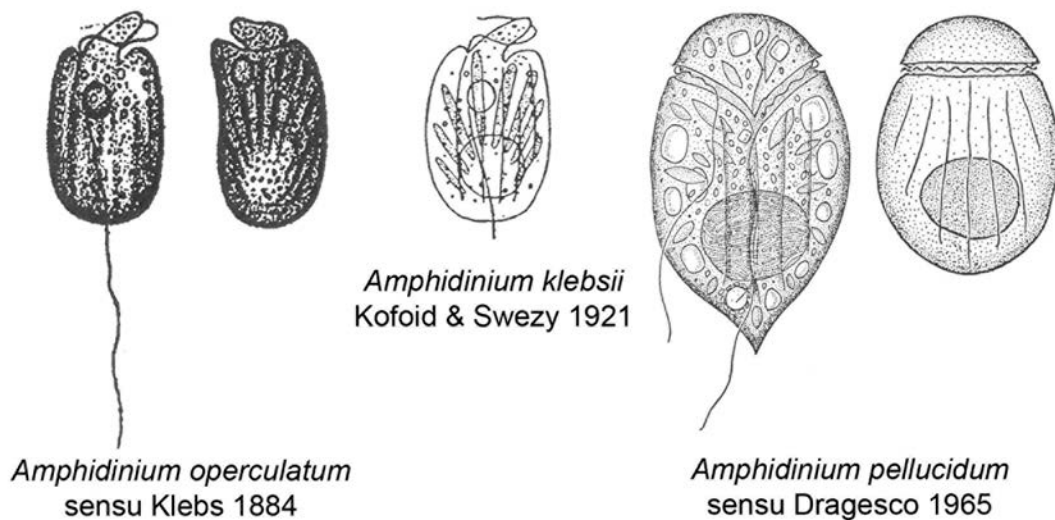


**Fig. S1.** *Bindiferia fragilissima sp. nov.* cells, demonstrating the chloroplasts with DIC and epifluorescence microscopy showing autofluorescence of the chloroplast(s). First line: same cell. Second line: same cell. Third line: first two images same cell, third image shows the elongated rod-like chloroplasts in near surface focus. Last line: smashed or deformed cells presenting a chloroplast mesh. Scale bars = 10  $\mu$ m.





**Fig. S2.** *Bindiferia fragilissima* sp. nov. culture from France. Remains of division cysts (hyaline sheaths) on the surface of the Petri dish bottom.



**Fig. S3.** Original line drawings of *Amphidinium* species described with longitudinal surface furrows on the hyposome.