



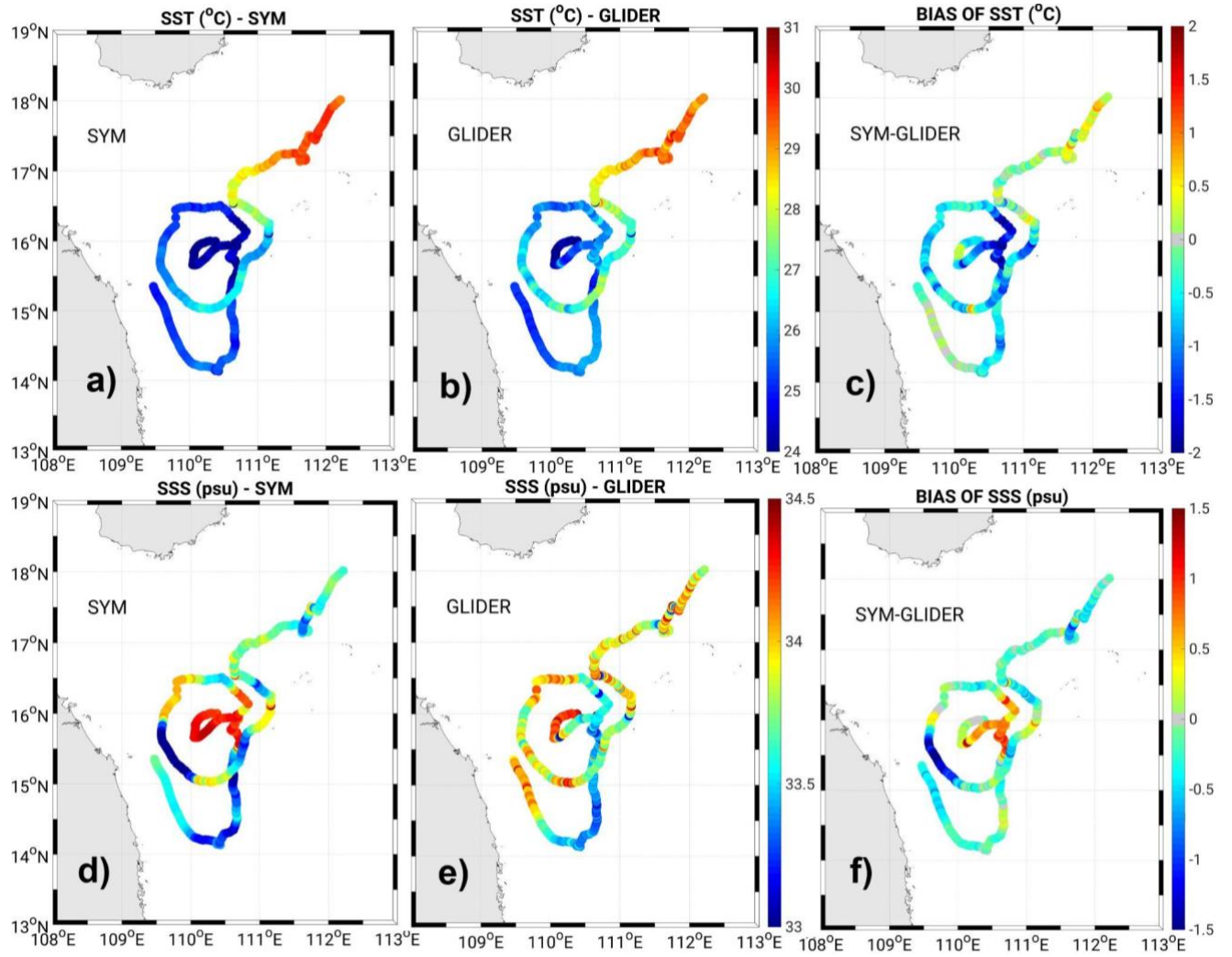
*Supplement of*

**The role of wind, mesoscale dynamics, and coastal circulation in the interannual variability of the South Vietnam Upwelling, South China Sea – answers from a high-resolution ocean model**

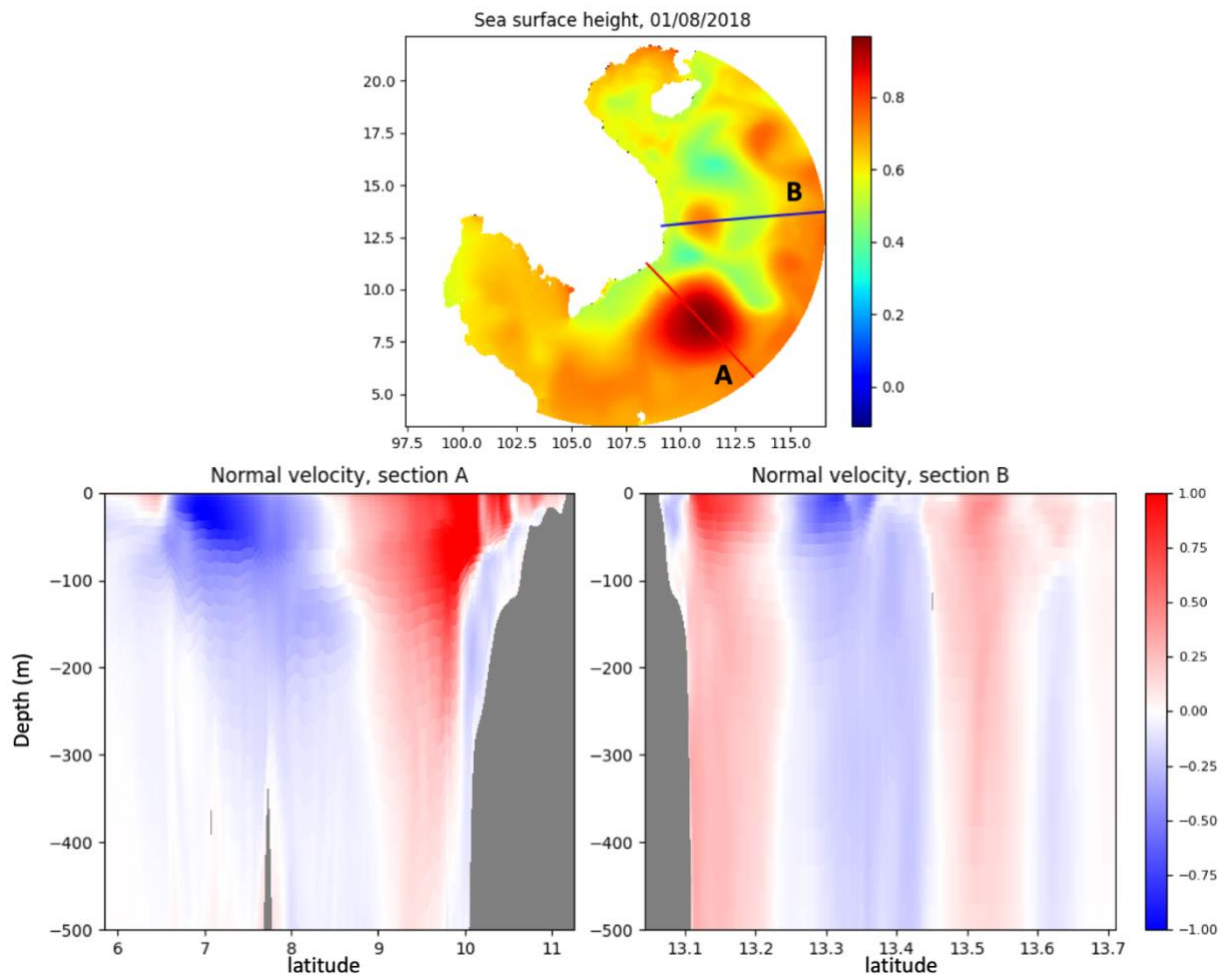
**Thai To Duy et al.**

*Correspondence to:* Marine Herrmann (marine.herrmann@ird.fr)

The copyright of individual parts of the supplement might differ from the article licence.



**Figure SM1 : Values of SST (top, °C) and SSS (bottom) from (a,d) the Glider trajectories between February and May 2017 and from (b,e) SYMPHONIE colocalized outputs, and (c,f) bias between SYMPHONIE and GLIDER.**



**Figure SM2 : Simulated daily sea surface height (m, top) and velocity ( $\text{m}\cdot\text{s}^{-1}$ ) normal to sections A (bottom, left) and B (bottom, right) on August 1st, 2018. Positive (negative) values correspond to a normal velocity oriented to the north (south).**