

MARMESONET

LEG II

28 novembre - 14 décembre 2009

REPARTITION DES CABINES

27/11/2009

Mission **MARMESONET**

A PARTIR DU 27/11

Pont A

A10 Sd mécanicien MAHO	A8 Electronicien GARNIER	A6 Snd Capitaine NOUGUE	A4 Chef mécanicien GOULOUZELLE	A2 Chef de mission GELI Scientifique CIFTCI
A5 Lieutenant navigation GODET	A3 Lieutenant commissaire ROBBE			A1 Commandant GLEHEN

Pont B

B6 2 Scientifiques LE BEUZ GASCON	B4 2 Scientifiques GUEGEN LE DOZE	B2 2 Scientifiques MARSET THOMAS REGNAULT
B7 2 Scientifiques VIDAL GUYAVARCH	B5 Mt Equipage NORMAND	B3 2 Scientifiques MARIN AKHUN
		B1 2 Scientifiques KER IMREN

CONTENEUR 4 Scientifiques TARY SARITAS AKGIN REGNAULT THOMAS

Pont C

C10 Ouvrier.mécanicien LE TOUZE Maitre Machine BOUTET	Cuisine	C8 A.D.C FERRON Garçon C8/1 TRINQUART Garçon C8/2 DELPIERRE	C6 Mte Manoeuvre CREACH Matelot C6/1(4/8) HEMON Matelot C6/2 LE BERRE	C4 Mt Hotel TERNON Cuisinier CHARLEMEIN	C2 Matelot C2/1 (8/12) PASCO Matelot C2/2 (0/4) GROMY
Carré Officiers		Office		Carré équipage	
					C1 Electricien LE REUN LE COUPANNEC

Liste des participants

Cruise participants, Leg II

	Gender	Institution	Fonction	28/11-13/12	13/12-14/12
1	M	Ifremer	Chief Scientist	Géli	Géli
2	M	DEU	Co-Chief	Cifçi	Cifçi
3	M	ITU	Senior Expert	Imren	Imren
4	M	Genavir	Electronician	Le Beuz	Le Beuz
5	M	Genavir	Electronician	Guiavarc'h	Guiavarc'h
6	M	Genavir	Electronician	Gascon	Gascon
7	M	Genavir	Electronician	Marin	Marin
8	M	Genavir	Mechanics	Guéguen	Guéguen
9	M	Genavir	Mechanics	Le Doz	Le Doz
10	M	IFREMER	3D HR	Marsset	Marsset
11	M	IFREMER	3D HR	Thomas	Thomas
12	M	IFREMER	3D HR	Ker	Ker
13	M	IFREMER	3D HR	Régnault	Régnault
14	M	DEU	Seismics	Küçük	Küçük
15	M	DEU	Seismics	Saritas	Saritas
16	M	KOERI	Seismics	Atgin	
	M	Ifremer	Bob Tech		Dupont
17	M	Ifremer	Seismics	Tary	
	M	Ifremer	BOB Tech		Pichavant

E-mail list :

IFREMER

Jacky Dupont

Jacky.Dupont@ifremer.fr

Louis Géli

Louis.Geli@ifremer.fr

Romain Jan

Romain.Jan@ifremer.fr

Stephan Ker

Stephan.Ker@ifremer.fr

Bruno Marsset

Bruno.Marsset@ifremer.fr

Pascal Pichavant

Pascal.Pichavant@ifremer.fr

Jean-Pierre Régnault

Jean.Pierre.Regnault@ifremer.fr

Jean-Baptiste Tary

Jean.Baptiste.Tary@ifremer.fr

Yannick Thomas

Yannick.Thomas2@ifremer.fr

ITU

Caner Imren

caner@itu.edu.tr

DEU

Günay Çifçi

gunay.cifci@deu.edu.tr

Selin Deniz Akhun

selindenizakhun@hotmail.com

Hakan Saritas

h.saritas@deu.edu.tr

Orhan Atgin

Bilan des travaux du navire chien de garde

02 décembre	05:00	Arrivée sur zone
05 décembre	22:00	quitte la zone pour se mettre à l'abri. stand-by météo
06 décembre	22:00	Retour sur zone. Fin stand-by
09 décembre	22:00	Quitte la zone. Fin stand-by Nouveau stand-by
10 décembre	09:00	le Suir appelle pour mettre fin à la mission du navire

The Name of the chase boat: Özgür II

The Name of the captain: İsmail

Tel : 535 834 19 43

The Name of the 2nd Captain: Sertan

Tel : 541 295 55 59

- Nombre de jours sur zone : 7 days
au transit : 1 day
en stand-by météo : 1 day

- Nombre de jours de mobilisation du navire : 9 days

- Proposition de Namik: 1000 € / day + 4000 € transfer

Organisation des quarts

- 0-4 Bruno Harvet, Hakan Saritas
4-8 Stéphan Ker, Gaban Akgin
8-12 Jean Pierre Reignault, Selim Akhun, Jean-Baptiste Tary

Hors Quart: Louis Geli
Yannick Thomas
Günay Güfçü
Camer Imren

Day	Date	Lat	Long	Speed (knts)	Course	Water Depth (m)
28:11	08:50					
	09:52	40° 55.88	28° 56.66	7.4	192	65
	09:53	40° 55.881	28 56.668	7.31	192	66
	10:00	40 55.88	28 56.66	7.3	192	66
	11:36	40° 48.305	28 46.325	7.8	287	1151
	11:51	40° 47.875	28 43.745	8.1	250	1120
	12:01					
	13:48	40 45.133	28. 22.546	8.82	265	355
	13:52	40 45.032	28 21.662	8.7	265	358
	15:47	40 42.803	28 01.248	8.3	265	607
	15:47					
	15:50	40 42.746	28 00.739	8.4	266	638
	15:55	40 42.633	27 59.751	8.4	267	603
	15:55					
	16:01	40 42.510	27 58.607	8.7	267	575
	16:04	40 42.446	27 58.043	8.4	268	524
	16:06	40 42.421	27 57.806	8	268	508
	16:54	40 41.479	27 49.304	7.8	273	382
	17:15	40 41.103	27 45.636	8	268	217
	18:05	40 43.035	27 41.369	8	86	406.4
		40 43.040	27 41.415	8	86	414
		40 43.045	27 41.465	8	86	423
	18:05	40 43.035	27 41.369	8	86	406.4
		40 43.040	27 41.415	8	86	414
		40 43.045	27 41.465	8	86	423
	18:28	40 43.483	27 45.506	8.25	84	615
	19:49	40 45.061	27 59.785	8.5	83	1120
		40 45.069	27 59.849	8.5	84	1152.4

27°30'0"E

28°0'0"E

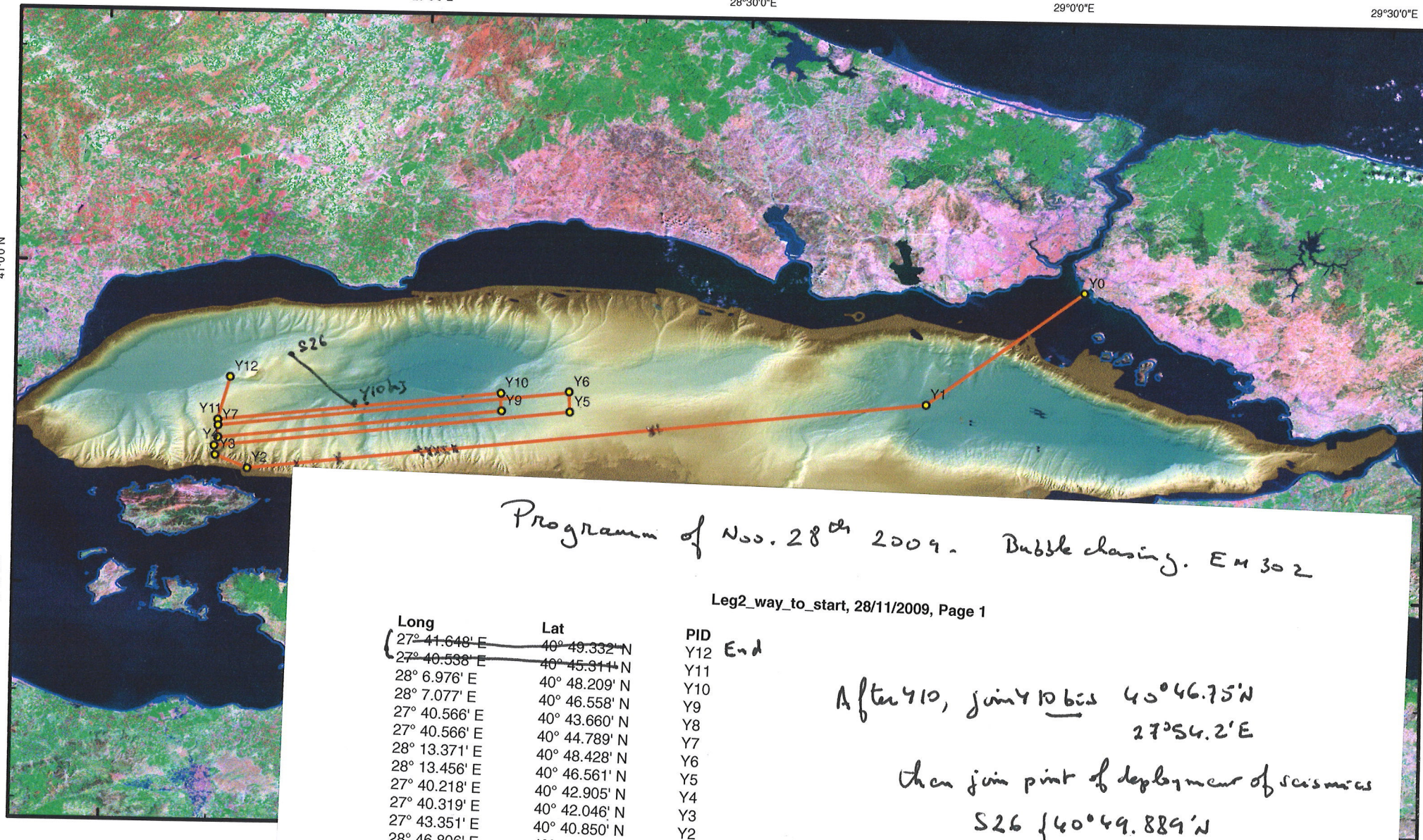
28°30'0"E

29°0'0"E

29°30'0"E

41°0'0"N

40°30'0"N



Observations

Roots

Program of Nov. 28th 2009. Bubble chasing. EM 302

Leg2_way_to_start, 28/11/2009, Page 1

Long	Lat	PID
27° 41.648' E	40° 49.332' N	Y12 End
27° 40.538' E	40° 45.311' N	Y11
28° 6.976' E	40° 48.209' N	Y10
28° 7.077' E	40° 46.558' N	Y9
27° 40.566' E	40° 43.660' N	Y8
27° 40.566' E	40° 44.789' N	Y7
28° 13.371' E	40° 48.428' N	Y6
28° 13.456' E	40° 46.561' N	Y5
27° 40.218' E	40° 42.905' N	Y4
27° 40.319' E	40° 42.046' N	Y3
27° 43.351' E	40° 40.850' N	Y2
28° 46.806' E	40° 47.781' N	Y1
29° 1.460' E	40° 58.412' N	Y0 -Start

After Y10, join Y10 bis 40°46.75'N
27°54.2'E

then join point of deployment of seismics

S26 { 40°49.889'N
27°49.448'E

if on time, join Y10 ter : 40°50.25'E
27°47.7'E

EM

P2

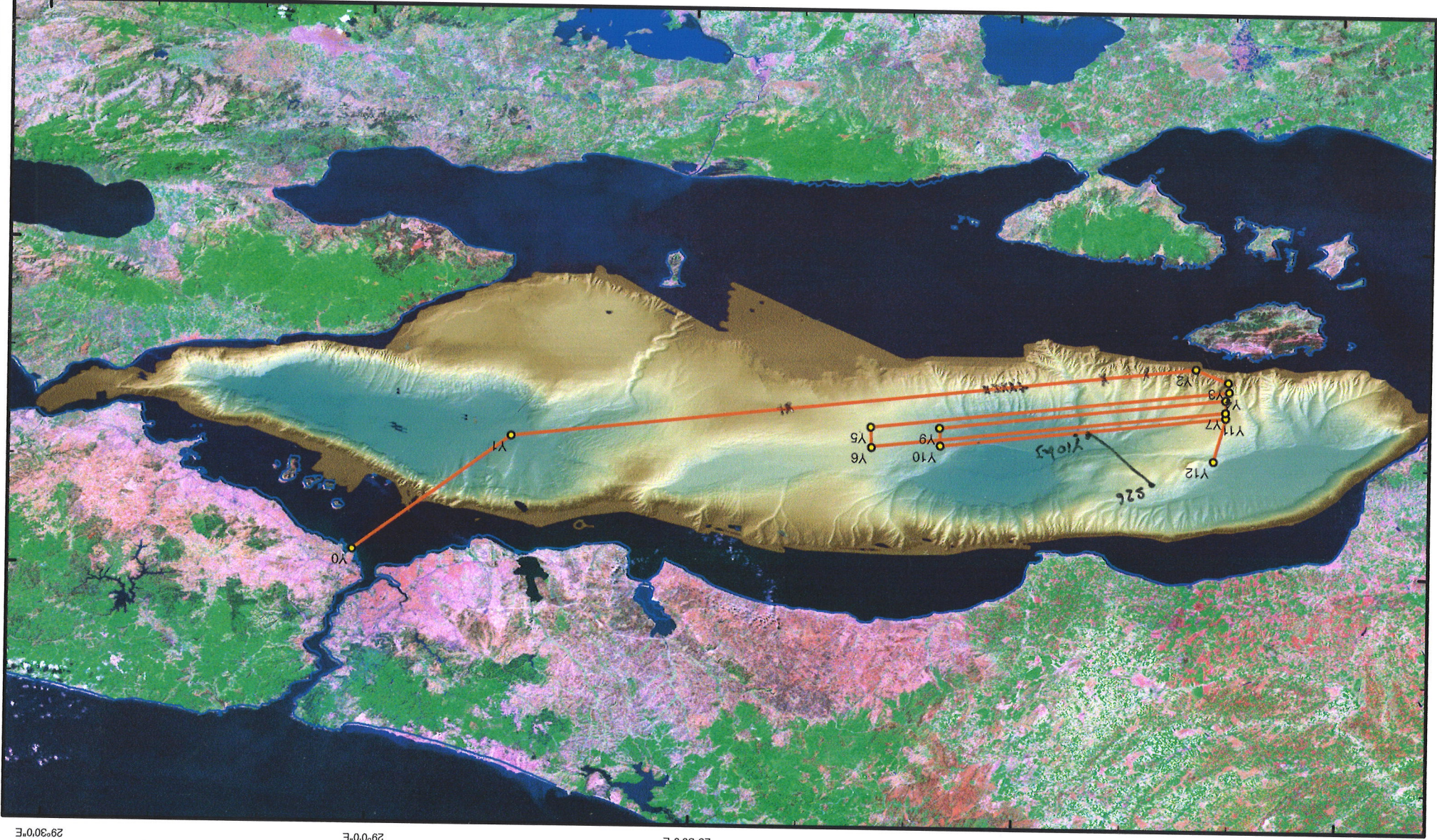
P244

Goals

Observations

40°30'0"N

41°00'0"N



EM
P2
P244

29°30'0"E 29°0'0"E 28°30'0"E 28°0'0"E 27°30'0"E

Tools

Observations

EM302 ON. Start Recording

P244 Deb

P244 fin / P245 Deb

Departure Istanbul

P244 Debut du profil from 70 to 71

Debut Profil P_{Y1} → P_{Y2} P245

charge direction course of traffic

echo trib

echo bab

echo bab

echo bab

echo bab

echo center strong

echo center

echo bab

echo bab

echo trib

echo bab

echo bab

echo trib

echo bab

~~P245 fin~~

P245 fin / P246 debut

P246 debut du profil from 44 to 45

echo trib

echo bab

echo bab

echo bab

echo bab

echo bab

Correspondance entre les numeros de lignes et les numeros de points rentés par la passerelle

Line	W point	E point	Done
1	S1	S2	
2	T1	T2	
3	S4	S3	
4	T4	T3	
5	S5	S6	
6	T5	T6	
7	S8	S7	
8	T8	T7	
9	S9	S10	
10	T9	T10	
11	S12	S11	
12	T12	T11	
13	S13	S14	
14	T13	T14	
15	S16	S15	
16	T16	T15	
17	S17	S18	
18	T17	T18	
19	S20	S19	
20	T20	T19	
21	S21	S22	
22	T21	T22	
23	S24	S23	
24	T24	T23	
25	S25	S26	OK
26	T25	T26	OK
27	S28	S27	OK
28	T28	T27	OK
29	S29	S30	
30	T29	T30	
31	S32	S31	
32	T32	T31	
33	S33	S34	
34	T33	T34	
35	S36	S35	
36	T36	T35	
37	S37	S38	
38	T37	T38	
39	S40	S39	
40	T40	T39	
41	S41	S42	
42	T41	T42	
43	S44	S43	
44	T44	T43	
45	S45	S46	
46	T45	T46	
47	S48	S47	
48	T48	T47	
49	S49	S50	
50	T49	T50	

OK

limite ←
du rail

Line	W point	E point	Done
51	S52	S51	
52	T52	T51	
53	S53	S54	
54	T53	T54	
55	S56	S55	OK
56	T56	T55	
57	S57	S58	
58	T57	T58	
59	S60	S59	
60	T60	T59	
61	S61	S62	
62	T61	T62	
63	S64	S63	
64	T64	T63	
65	S65	S66	
66	T65	T66	
67	S68	S67	
68	T68	T67	
69	S69	S70	OK
70	T69	T70	OK
71	S72	S71	
72	T72	T71	
73	S73	S74	
74	T73	T74	
75	S76	S75	
76	T76	T75	
77	S77	S78	
78	T77	T78	
79	S80	S79	
80	T80	T79	
81	S81	S82	
82	T81	T82	
83	S84	S83	
84	T84	T83	
85	S85	S86	
86	T85	T86	
87	S88	S87	
88	T88	T87	
89	S89	S90	
90	T89	T90	
91	S92	S91	
92	T92	T91	
93	S93	S94	
94	T93	T94	
95	S96	S95	
96	T96	T95	
97	S97	S98	
98	T97	T98	
99	S100	S99	
100	T100	T99	

OK

OK

OK

OK

Line	W point	E point	Done
101	S101	S102	
102	T101	T102	
103	S104	S103	
104	T104	T103	
105	S105	S106	
106	T105	T106	
107	S108	S107	
108	T108	T107	
109	S109	S110	
110	T109	T110	
111	S112	S111	
112	T112	T111	
113	S113	S114	
114	T113	T114	
115	S116	S115	
116	T116	T115	
117	S117	S118	
118	T117	T118	
119	S120	S119	
120	T120	T119	
121	S121	S122	
122	T121	T122	
123	S124	S123	
124	T124	T123	
125	S125	S126	
126	T125	T126	
127	S128	S127	
128	T128	T127	
129	S129	S130	
130	T129	T130	
131	S132	S131	
132	T132	T131	
133	S133	S134	
134	T133	T134	
135	S136	S135	
136	T136	T135	
137	S137	S138	
138	T137	T138	
139	S140	S139	
140	T140	T139	
141	S141	S142	
142	T141	T142	
143	S144	S143	
144	T144	T143	
145	S145	S146	

*****SURVEY_HR3D: marmara *****

Last modification: 27-Nov-2009 14:56:29

*****DATA_DISK*****

D:\ (data_disk)

*****3D_BOX*****

145 (nprofil)

25 (dprofil)

6.25 (dbin)

1500 (velocity)

40.8295000 (lat_ref)

81.50 (cap)

2336043.17 (xref)

3757063.97 (yref)

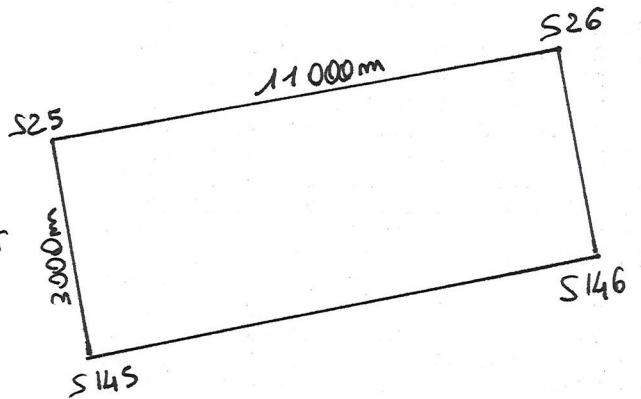
10998 (lprofil)

3625 (wprofil)

4.40 (decli)

*****PROFILE*****

1	27°41.648	40°49.332	27°49.385	40°50.210
2	27°41.651	40°49.318	27°49.388	40°50.196
3	27°41.653	40°49.305	27°49.390	40°50.183
4	27°41.656	40°49.292	27°49.393	40°50.170
5	27°41.659	40°49.278	27°49.396	40°50.156
6	27°41.661	40°49.265	27°49.398	40°50.143
7	27°41.664	40°49.252	27°49.401	40°50.130
8	27°41.666	40°49.238	27°49.403	40°50.116
9	27°41.669	40°49.225	27°49.406	40°50.103
10	27°41.672	40°49.211	27°49.409	40°50.089
11	27°41.674	40°49.198	27°49.411	40°50.076
12	27°41.677	40°49.185	27°49.414	40°50.063
13	27°41.680	40°49.171	27°49.417	40°50.049
14	27°41.682	40°49.158	27°49.419	40°50.036
15	27°41.685	40°49.145	27°49.422	40°50.023
16	27°41.687	40°49.131	27°49.424	40°50.009
17	27°41.690	40°49.118	27°49.427	40°49.996
18	27°41.693	40°49.105	27°49.430	40°49.983
19	27°41.695	40°49.091	27°49.432	40°49.969
20	27°41.698	40°49.078	27°49.435	40°49.956
21	27°41.701	40°49.064	27°49.438	40°49.943
22	27°41.703	40°49.051	27°49.440	40°49.929
23	27°41.706	40°49.038	27°49.443	40°49.916
24	27°41.708	40°49.024	27°49.445	40°49.902
25	27°41.711	40°49.011	27°49.448	40°49.889
26	27°41.714	40°48.998	27°49.451	40°49.876
27	27°41.716	40°48.984	27°49.453	40°49.862
28	27°41.719	40°48.971	27°49.456	40°49.849
29	27°41.722	40°48.958	27°49.459	40°49.836
30	27°41.724	40°48.944	27°49.461	40°49.822
31	27°41.727	40°48.931	27°49.464	40°49.809
32	27°41.729	40°48.918	27°49.466	40°49.796
33	27°41.732	40°48.904	27°49.469	40°49.782
34	27°41.735	40°48.891	27°49.472	40°49.769
35	27°41.737	40°48.877	27°49.474	40°49.756
36	27°41.740	40°48.864	27°49.477	40°49.742
37	27°41.743	40°48.851	27°49.480	40°49.729
38	27°41.745	40°48.837	27°49.482	40°49.715
39	27°41.748	40°48.824	27°49.485	40°49.702
40	27°41.750	40°48.811	27°49.487	40°49.689
41	27°41.753	40°48.797	27°49.490	40°49.675
42	27°41.756	40°48.784	27°49.493	40°49.662
43	27°41.758	40°48.771	27°49.495	40°49.649
44	27°41.761	40°48.757	27°49.498	40°49.635
45	27°41.764	40°48.744	27°49.501	40°49.622
46	27°41.766	40°48.730	27°49.503	40°49.609
47	27°41.769	40°48.717	27°49.506	40°49.595
48	27°41.771	40°48.704	27°49.508	40°49.582
49	27°41.774	40°48.690	27°49.511	40°49.568
50	27°41.777	40°48.677	27°49.514	40°49.555
51	27°41.779	40°48.664	27°49.516	40°49.542
52	27°41.782	40°48.650	27°49.519	40°49.528
53	27°41.785	40°48.637	27°49.522	40°49.515
54	27°41.787	40°48.624	27°49.524	40°49.502
55	27°41.790	40°48.610	27°49.527	40°49.488



S25
T25
S28

S26
T26
S27

no
profil
↓
coord
debut

coord
fin

56	27°41.793	40°48.597	27°49.530	40°49.475
57	27°41.795	40°48.583	27°49.532	40°49.462
58	27°41.798	40°48.570	27°49.535	40°49.448
59	27°41.800	40°48.557	27°49.537	40°49.435
60	27°41.803	40°48.543	27°49.540	40°49.422
61	27°41.806	40°48.530	27°49.543	40°49.408
62	27°41.808	40°48.517	27°49.545	40°49.395
63	27°41.811	40°48.503	27°49.548	40°49.381
64	27°41.814	40°48.490	27°49.551	40°49.368
65	27°41.816	40°48.477	27°49.553	40°49.355
66	27°41.819	40°48.463	27°49.556	40°49.341
67	27°41.821	40°48.450	27°49.558	40°49.328
68	27°41.824	40°48.436	27°49.561	40°49.315
69	27°41.827	40°48.423	27°49.564	40°49.301
70	27°41.829	40°48.410	27°49.566	40°49.288
71	27°41.832	40°48.396	27°49.569	40°49.275
72	27°41.835	40°48.383	27°49.572	40°49.261
73	27°41.837	40°48.370	27°49.574	40°49.248
74	27°41.840	40°48.356	27°49.577	40°49.234
75	27°41.842	40°48.343	27°49.579	40°49.221
76	27°41.845	40°48.330	27°49.582	40°49.208
77	27°41.848	40°48.316	27°49.585	40°49.194
78	27°41.850	40°48.303	27°49.587	40°49.181
79	27°41.853	40°48.289	27°49.590	40°49.168
80	27°41.856	40°48.276	27°49.593	40°49.154
81	27°41.858	40°48.263	27°49.595	40°49.141
82	27°41.861	40°48.249	27°49.598	40°49.128
83	27°41.863	40°48.236	27°49.600	40°49.114
84	27°41.866	40°48.223	27°49.603	40°49.101
85	27°41.869	40°48.209	27°49.606	40°49.088
86	27°41.871	40°48.196	27°49.608	40°49.074
87	27°41.874	40°48.183	27°49.611	40°49.061
88	27°41.877	40°48.169	27°49.614	40°49.047
89	27°41.879	40°48.156	27°49.616	40°49.034
90	27°41.882	40°48.142	27°49.619	40°49.021
91	27°41.884	40°48.129	27°49.621	40°49.007
92	27°41.887	40°48.116	27°49.624	40°48.994
93	27°41.890	40°48.102	27°49.627	40°48.981
94	27°41.892	40°48.089	27°49.629	40°48.967
95	27°41.895	40°48.076	27°49.632	40°48.954
96	27°41.898	40°48.062	27°49.635	40°48.941
97	27°41.900	40°48.049	27°49.637	40°48.927
98	27°41.903	40°48.036	27°49.640	40°48.914
99	27°41.906	40°48.022	27°49.643	40°48.900
100	27°41.908	40°48.009	27°49.645	40°48.887
101	27°41.911	40°47.995	27°49.648	40°48.874
102	27°41.913	40°47.982	27°49.650	40°48.860
103	27°41.916	40°47.969	27°49.653	40°48.847
104	27°41.919	40°47.955	27°49.656	40°48.834
105	27°41.921	40°47.942	27°49.658	40°48.820
106	27°41.924	40°47.929	27°49.661	40°48.807
107	27°41.927	40°47.915	27°49.664	40°48.794
108	27°41.929	40°47.902	27°49.666	40°48.780
109	27°41.932	40°47.889	27°49.669	40°48.767
110	27°41.934	40°47.875	27°49.671	40°48.753
111	27°41.937	40°47.862	27°49.674	40°48.740
112	27°41.940	40°47.848	27°49.677	40°48.727
113	27°41.942	40°47.835	27°49.679	40°48.713
114	27°41.945	40°47.822	27°49.682	40°48.700
115	27°41.948	40°47.808	27°49.685	40°48.687
116	27°41.950	40°47.795	27°49.687	40°48.673
117	27°41.953	40°47.782	27°49.690	40°48.660
118	27°41.955	40°47.768	27°49.692	40°48.647
119	27°41.958	40°47.755	27°49.695	40°48.633
120	27°41.961	40°47.741	27°49.698	40°48.620
121	27°41.963	40°47.728	27°49.700	40°48.606
122	27°41.966	40°47.715	27°49.703	40°48.593
123	27°41.969	40°47.701	27°49.706	40°48.580
124	27°41.971	40°47.688	27°49.708	40°48.566
125	27°41.974	40°47.675	27°49.711	40°48.553
126	27°41.976	40°47.661	27°49.713	40°48.540
127	27°41.979	40°47.648	27°49.716	40°48.526

128	27°41.982	40°47.635	27°49.719	40°48.513
129	27°41.984	40°47.621	27°49.721	40°48.500
130	27°41.987	40°47.608	27°49.724	40°48.486
131	27°41.990	40°47.594	27°49.727	40°48.473
132	27°41.992	40°47.581	27°49.729	40°48.459
133	27°41.995	40°47.568	27°49.732	40°48.446
134	27°41.997	40°47.554	27°49.734	40°48.433
135	27°42.000	40°47.541	27°49.737	40°48.419
136	27°42.003	40°47.528	27°49.740	40°48.406
137	27°42.005	40°47.514	27°49.742	40°48.393
138	27°42.008	40°47.501	27°49.745	40°48.379
139	27°42.011	40°47.488	27°49.748	40°48.366
140	27°42.013	40°47.474	27°49.750	40°48.353
141	27°42.016	40°47.461	27°49.753	40°48.339
142	27°42.018	40°47.447	27°49.755	40°48.326
143	27°42.021	40°47.434	27°49.758	40°48.312
144	27°42.024	40°47.421	27°49.761	40°48.299
145	27°42.026	40°47.407	27°49.763	40°48.286

S144
T144
S145

S14
T14
S1

Day	Date	Latitude	Longitude	Speed (knots)	Course	Water depth
28/11	19:49	40 45.074	27 59.899	8.5	84	1151
		40 45.074				
	19:52	40 45.125	28 00.348	8.5	84	1131.8
	19:56	40 45.201	28 01.053	8.6	83	1117.4
	19:56	40 45.207	28 01.109	8.6	84	1115.4
	19:57	40 45.228	28 01.299	8.6	84	1112
	20:02	40 45.332	28 02.232	8.6	85	1115
	20:02	40 45.334	28 02.248	8.6	85	1116
	20:13	40° 45,575	28° 04,447	7,77	75,03	1092,6
	21:03:31	40° 46,588	28° 13,586	7,93	81,35	610
	21:03:55	40° 46,611	28° 13,646	7,69	71,38	608
	21:18:53	40° 48,409	28° 13,371	7,85	6,25	678,6
	21:19:13	40° 48,412	28° 13,360	7,91	6,57	684,2
	29/11	00:15	40° 44.604	27° 40.423	8.11	193
00:24		40° 43.685	27° 40.992	8.83	82.11	428
02:32		40 46.838	28 05.022	9.16	83.4	1067
03:03		40 47.888	28 05.284	7.9	263	1126
03:08		40 47.891	28 04.282	7.9	270	1184
04:07		40 46.872	27 53.343	7.1	314	1103
04:28		40 48.784	27 51.117	7.9	317	861
06:28		40 48.852	27 51.015	7.9	317	845
06:30						
06:32		40 49.110	27 50.625	8.2	316	808
04:42		40 49.352	27 49.251	7.6	294	601
04:51		40 50.23	27 47.735	7.78	292	563
04:56		40 50.500	27 47.708	7.66	81	558
05:03		40 50.748	27 43.163	8.9	31	538
05:04	40 50.477	27 43.467	8.8	31	628	

Tools

Observations

bab

trib

trib

bab

trib

bab

trib

trib

BT302 Fin P246

fin profil 246 pt 75

BT302 Debut P247

deb profil 247

BT302 fin P247

→ fin profil 247 pt 76
debut profil 248

BT302 debut P248

P248 fin

P248 fin du profil point 77

P249 debut

P249 debut du profil point 78 to 79

echo bab

P249 Fin — P250 Debut

P250 debut d profil 710 to 711

echo center

P250 Fin — P251 Debut

echo trib

echo center

echo center

echo bab

Passage sur S26

Echo trib ad

echo trib

echo trib

echo center

Day	Date	Latitude	Longitude	Speed	Course	Water depth
29/11	05.12	40-50.460	27 50.324	8-7	93	689
29/11	05.13	40 50.438	27 51.020	8-6	93	712
	05.14					
	05.14	40.50.629	27 51.221	8.6	93	721
	05.36	40 50.292	27 53.310		60	931
	06.18	40 50.323	27 53.393		255	932
	07.12	40 49.941	27 51.171		283	748
		40 49.940	27 51.163		283.5	748
		40 49.939	27 51.152		283.7	749
	07.14	40 49.933	27 51.062		284	741
		40 49.932	27 51.056		284	738
	07.32	40 49.872	27 50.248		286	692
	07.33	40 49.872	27 50.213		287.8	690
	08.13:37	40° 49, 80.1	27° 48, 875	2.17, 17	1, 76	615, 6
	9:59:42	40° 49, 153	27° 42, 982	3, 67	271, 57	640, 8
	9:59:55	40° 49, 151	27° 42, 967	3, 57	271, 25	644
	9:51:15	40° 49, 140	27° 42, 625	3, 14	271, 08	641, 8
	10:10:59	40 49.016	27 41.623	3.02	273.5	814.2
	10:28:18	40 48.974	27 40.488	3.16	280	1052
	10:29:17	40 48.979	27 40.420	3.13	281	1059
		40 48.980	27 40.407	3.12	281.24	1063
		40 48.981	27 40.403	3.11	281.3	1067
		40 48.983	27 40.386	3.10	281.6	1067
	10:32:44	40 49.010	27 40.196	3.04	281.6	1085
	10:34:05	40 49.020	27 40.102	3.10	281.9	1096
		40 49.021	27 40.096	3.10	281.9	1098
		40 49.022	27 40.085	3.09	281.8	1101

Tools

Observations

echo trib

echo bab

echo bab

echo bab

CTD in water

CTD fini

trib

trib

trib

trib

trib

trib

trib

bab

bab

Centre

bab

bab

trib

trib

trib

trib strong

trib

trib

bab

bab

bab

DAY	DATE H.TU	LATITUDE	LONGITUDE	SPEED	COURSE	WATER DEPTH
29/11	10:38:40	40 49.055	27 39.773	03.19	282.42	1111.4
	10:38:53	40 49.057	27 39.758	03.21	282.48	1112.6
	11:35:	40° 49.751	27° 35.791	4.6	223	1126
	12:47:01	40° 49.021	27° 41.805	4.99	81	781
	14:00					
	14:38	40° 49.471	27° 49.615	4.18	276	716
	15:51	40° 48.460	27° 41.243	4.98	241	832
	16:23	40° 49.008	27° 41.851	4.41	82	784
	17:41	40° 49.800	27° 49.509	4.64	76	637
	18:13	40° 49.268	27° 49.406	4.96	271	734
	19:29	40 48.375	27° 41.585	4.75	261	763
	19:51	40.48.992	27° 41.782	4.61	86°	794
	21:07	40° 49.877	27° 49.636	4.7	115	648
	21:31	40° 49.282	27° 49.448	4.9	267	731
	22:49	40° 48.915	27° 41.719	4.89	266	752
	23:17	40° 48.975	27° 41.768	4.47	82	782
30/11	00:31	40° 49.853	27° 49.518	4.91	80	646
	00:56	40° 49.302	27° 49.409	4.60	272-4	737
	02:10	40° 48.432	27° 41.761	4.84	267	758
	02:37	40° 48.958	27° 41.748	4.63	86	786
	03:54	40° 49.844	27° 49.553	4.80	75	646
	04:18	40° 49.320	27° 49.630	4.51	273	732
	05:35	40° 48.937	27° 41.705	4.8	263	760
	06:01	40° 48.965	27° 41.935	4.8	70	778
	07:17	40° 49.832	27° 49.529	4.7	76°	650

TOOLS

OBSERVATIONS

{ AN Guns + Streamer in water
 OFF EM302 in water column mode
 ON EM302 in pure bathy mode
START SHOOTING (TEST LINE)

START SEISMIC ACQUISITION

Start Profil 002. Line 55

Fin Profil 002. Sounding in

Start Profil 003 (Line 26 / Points T25 - T26)

End Profil 003 (Line 26)

Start Profil 004 (Line 70)

Fin de Profil 004

Debut Profil 005

Fin Profil 005 (Line 27)

Debut profil 006 (Line 69)

Fin profil 006 (Line 69)

Debut profil 007 (Line 28)

Fin profil 007 (Line 28)

Debut profil 008 (Line 68)

Fin profil 008 (Line 68)

Debut profil 009 (Line 29)

Fin profil 009 (Line 29)

Debut profil 10 (Line 67)

Fin profil 10 (Line 67)

Debut Profil 11 (Line 30)

Fin de Profil

bab

centre

{ STOP EM302 Recording in "Bubble mode"
START RECORDING WITH BATHYMETRIC
MODE ONLY

START Line 25 - Profil 001

STOP Line 25 Fin de Profil 1

Debut Line 55. Profil 002

(next: T26. T25 = Line 26)

(next: T69. T70 : Line 70)

Unit-Vrai 5,3 ~~m/s~~ / 26°

Points S28. S27) next: Line 69. S69-S70

(~~next~~ vent: 9 mds, 137°

vent Suceuds, 148°

11 noeuds, 167°

12 noeuds, 132°

8 noeuds 151°

4 noeuds 156°

4 noeuds 148°

5 noeuds 132°

2 noeuds 205°

1.6 noeuds 316°

T29-T30

0 Knts 327

Consignes de la nuit du 29 au 30.11.2019

- 1) Rester au nord du rail, entre les lignes 25 et 70
- 2) La passerelle "bucala les profils" en "resserrant l'hippodrome"
- 3) Après chaque débur de profil le PC demande le numéro de point au lequel on passe
- 4) En fin de profil, mettre au stalylabos (rayon) le profil effectué

Day	Date	Latitude	Longitude	Depth m	Course	Speed
20/11	07:44	40°49.332	27°49.884	733	277	4.75
✓	08:59	40°48.461	27°41.780	750	267	4.85
	09:26	40°49.962	27°41.806	781	85°	4.8
	10:39	40°49.819	27°49.539	658	75°	4.73
	11:08	40°49.340	27°49.482	741	278	4.41
	12:25	40°48.469	27°41.456	761	268	4.8
	12:50	40°48.920	27°41.907	778	80°	5.1
	14:02	40°49.811	27°49.564	658	75°	4.8
	14:29	40°49.355	27°49.455	730	275	4.5
	15:46	40°48.781	27°41.717	756	267	4.73
	16:10	40°48.808	27°41.782	780	77-66	4.67
	17:27	40°49.782	27°49.529	661	82-16	4.65
	17:54	40°49.379	27°49.532	743	270°	4.63
	19:10	40°48.497	27°41.718	763	262°	4.67
	19:35	40°48.888	27°41.745	781	71°	5.18
	20:51	40°49.792	27°49.614	661	71°	4.55
	21:19	40°49.375	27°49.678	731	275	4.68
	22:34	40°48.508	27°41.767	757	270	4.87
	23:03	40°48.888	27°41.834	777	80°	4.8
01/12	00:17	40°49.765	27°49.493	668	77	4.5
	00:45	40°49.397	27°49.460	732	269	5.2
	02:02	40°48.521	27°41.740	773	269	4.6
	02:29	40°48.871	27°41.739	785	79	4.6
	03:47	40°49.750	27°49.530	668	80-48	4.6
	04:13	40°49.399	27°49.447	731	275	5.3
	05:25	40°48.537	27°41.751	776	275	4.8
	05:54	40°48.847	27°41.781	783	72.96	4.5

Observations

debut de Profil 12 (T66 - T65 line 66) Vent 2 kts 71°
debut Acquisita Soudan 07:50

Fin de Profil Vent 1 knt. 88°

Debut a Profil 13 (S31 - S32 line 31)

2 noeuds 296° Fin profil 13 (ligne 31)

vent 0 Debut profil 14 (ligne 65) ^{1^{er}} profil OK !!
Champagne ---

5 noeuds 250 Fin profil 14 (ligne 65)

3 kts 225 Debut de Profil 15 (ligne 32)

fin de profil 15 (ligne 32)

debut de profil 16 (64)

fin de profil 16 (end of profile 16) (line 64)

Start of line 17 (33)

End of profile 17 (33)

Debut de Profil 18 (63) Vent 3 kts 261°

Fin de Profil 18 Vent 2 kts 140°

Debut de Profil 19 (34) 1 knt. 7°

Fin de Profil 19 6 kts 160°

Debut de Profil 20 (62) 4 kts 166°

Fin du Profil 20 4 knt 10°

SOL Profil 21 (35) 2 knt 81°

Fin du Profil 21 6 knt 160°

Debut du Profil 22 (61) 3 knt 180°

End of the profile 22 2.2 knot 355.5°

Debut du Profil 23 (36) 0.7 knot 333.8°

Fin du Profil 23 1.1 knot 5.8°

Debut du Profil 24 (60) 2 knot 350.6°

Fin du Profil 24 (60) 0.5 knot 257.6°

Debut de Profil 25 (37) 1.5 knot 103.7°

Date	Time	Latitude	Longitude	Depth	Course	Speed
01/12	07:11	40° 49.931	27° 49.519	675	81°	4.71
	07:32	40° 49.341	27° 49.555	737	269°	4.78
	08:52	40° 48.459	27° 41.781	751	275°	4.67
	08:53					
	09:21	40° 48.939	27° 41.780	782	76°	4.62
	10:39	40° 49.820	27° 49.552	656	81°	4.6
	10:59	40° 49.318	27° 49.513	737	271°	5.02
	12:08	40° 48.445	27° 41.791	748	268°	5.1
	12:40	40° 48.941	27° 41.759	783	82°	4.46
	13:30					
	13:56	40° 49.830	27° 49.538	651	79	4.5
	14:18	40° 49.319	27° 49.489	734	276°	5.1
	15:26	40° 48.427	27° 41.753	749	267	5.07
	15:52	40° 48.363	27° 41.746	786	814	4.7
	17:11	40° 49.842	27° 49.487	645	73.37	4.4
	17:34	40° 49.284	27° 49.481	736	281	5.2
	18:41	40° 48.403	27° 41.731	746	267	5.35
	19:07	40° 48.979	27° 41.778	788	83	4.85
	20:24	40° 49.849	27° 49.459	643	79	4.57
	20:42	40° 49.284	27° 49.561	711	266	5.56
	21:48	40° 48.412	27° 41.835	710	266	5.42
	22:10	40° 48.982	27° 41.732	796	82	4.9
	23:29	40° 49.864	27° 49.493	639	80	4.9
	23:53	40° 49.409	27° 49.449	726	267	5.2

Observation

Fin de Profil Vent 4 knts 51°
 Debut de Profil 26 (66) Vent 3 knts 115°
 Fin de Profil Vent 3 knts 358°
 Passage Mode Differential (Station Instambul)
 Debut de Profil 27 (31) Vent 3 knts 335°
 Fin profil 27 vent 4 m/s - 154°
 Debut du profil 28 (67) 6 knot 168°
 vitesse surface 3.5 kts faible (1.5 kts de courant de pou)
 ↳ vitesse fond → à 5.2 kts
 Fin profil 28 3 knot 20°
 Debut du profil 29 (30) 2 knot 21°
 Passage d'un grand marine → bruit élevé sur les flutes
 Fin du profil 29 10 knot 119° ↳ 900 premiers hrs
 Debut de profil 30 (68) 3.8 knot 118° trailes: profil 329
 Fin de profil 30 (68) 6 knot 63°
~~Fin de profil 30~~
 Debut de profil 31 (29) 3 knot 93.7°
 Fin de profil 31 6.5 knot 120.6°
 Debut de profil 32 (69) 4.5 knot 136°
 Fin de Profil 32 9 knts 171°
 Debut de Profil 33 (28) 11 knts 182°
 Fin de Profil 13 knts 145°
 Debut de Profil 34 (70) 14 knts 156°
 Fin de Profil 7 knts 152°
 Debut de Profil 35 (27) 11 knot 144°
 Fin de Profil 13 knot 106° (vent ↑ rafale 20 knots)
 Debut de Profil 36 (60) 10 knot 151°

Date	Time	Latitude	Longitude	Depth	Course	Speed
02/12	00:58	40° 48.525	27° 41.634	783	264	5.44
	01:31	40° 49.002	27° 41.758	789	82	3.84
	02:52	40° 49.873	27° 49.495	639	77	4.48
	03:18	40° 48.435	27° 49.683	726	270°	5.3
	4:28	40° 48.466	27° 41.201	833	253	4.7
	05:02	40° 49.013	27° 41.746	793	82	6.49
	06:22	40° 49.898	27° 49.698	636	79	6.8
	06:43	40° 49.447	27° 49.499	725	271	5.43
	07:48	40° 48.568	27° 41.285	782	265	5.52
	08:20	40° 48.839	27° 41.746	782	79°	4.69
	09:35	40° 49.715	27° 49.469	675	81°	4.92
	09:52	40° 49.047	27° 49.600	786	267°	5.09
	11:00	40° 48.166	27° 41.829	689	271	5.3
	11:22	40° 48.841	27° 41.917	776	83	4.15
	12:39	40° 49.702	27° 49.500	681	81	4.5
	12:54	40° 49.009	27° 49.615	781	276	5.68
	14:00	40° 48.151	27° 41.843	683	269	5.3
	14:24	40° 48.819	27° 41.817	784	80	4.5
	15:37	40° 49.632	27° 49.511	682	80	4.5
	15:52	40° 48.887	27° 49.700	812	255	5.7
	17:01	40° 47.399	27° 41.826	652	268	5.2
	17:22	40° 48.808	27° 41.789	788	83	4.3
	18:42	40° 49.677	27° 49.482	684	83	4.42
	18:56	40° 49.007	27° 49.532	786	265	5.07
	20:05	40° 48.744	27° 41.870	680	266	5.06
	20:23	40° 48.779	27° 41.737	792	86°	4.47

Observation

Fin de profil 36 (Line 60)	10 knot	150°
Debut de profil 37 (Line 26)		
Fin de profil 37	8.6 knot	145°
Debut de profil 38 (53)	5.4 knot	120°
fin de profil 38		
Debut de profil 39 (25)	7.8 knot	137°
fin de Profil 39 (25)	17 Knts	132°
Debut de Profil 40 (58)	13 Knts	142°
Fin de Profil	6 Knts	136°
Debut de Profil 41 (38)	12 Knts	131°
Fin de Profil 41	10 Knts	102°
Debut de Profil 42 (88)	8 Knts	150°
Fin du profil 42 (88)	8 knot	105°
Debut du profil 43 (39)	12 knot	98°
Fin du Profil 43 (39)	14 knot	82°
Debut du Profil 44 (89)	11 knot	89°
<u>Entree de profil en vrac</u>		
Fin de Profil 44 (89)	13 knot	87°
Debut de profil 45 (40)	8 knot	84°
Fin de profil 45 (40)	8 knot	88°
Debut de profil 46 (40) (100)	6 knot	86°
Debut de profil 1000 m apres le debut de la boite		
Fin de profil (46 (100)	6.7 knot	84°
Debut de profil 47 (41)	5 knot	71°
Fin de Profil	12 Knts	66°
Debut de Profil 48 (90)	13 Knts	69°
Fin de Profil <u>probleme de la</u> <u>canon bâbord</u>	12 Knts	77°
Debut de Profil 49 (42)	12 Knts	78°

Date	Time	Latitude	Longitude	Depth	Course	Speed
02/12	21:38	40° 49.664	27° 49.491	687	82°	4.53
	21:58	40° 49.000	27° 49.620	790	266	5.08
	23:10	40° 48.125	27° 41.757	692	272	5.17
	23:30					
	23:57	40° 48.776	27° 41.792	787	83°	4.4
03/12	00:57	40° 49.655	27° 49.569	698	82°	4.22
	01:14	40° 48.982	27° 49.581	792	262°	5.04
	2:26	40° 48.105	27° 41.731	677	267	4.92
	2:47	40° 48.762	27° 41.785	794	82°	4.20
	04:08	40° 49.638	27° 49.529	654	80°	4.2
	04:27	40° 48.957	27° 49.598	735	283	4.7
	05:43	40° 48.038	27° 41.856	667	269	4.6
	06:05	40° 48.751	27° 41.810	791	80°	4.57
	07:22	40° 49.622	27° 49.503	696	82°	4.53
	07:40	40° 48.942	27° 49.635	801	285°	4.67
	08:54	40° 48.085	27° 41.872	669	270°	4.69
	09:11	40° 48.735	27° 41.768	796	80°	4.79
	10:27	40° 49.614	27° 49.513	698	81°	4.3
	10:57	40° 48.866	27° 49.568	810	269°	5.41
	12:08	40° 47.990	27° 41.874	643	265	4.9
	12:29	40° 48.725	27° 41.847	791	82	4.61
	13:47	40° 49.599	27° 49.558	708	78	3.9
	14:05	40° 48.832	27° 49.423	809	262	4.8

Observations

Fin de Profil 49 (ligne 42) Vent 11 Knts - 82°

Début de Profil 50 (ligne 91) Vent 12 Knts - 75°

Fin du profil 50 (Ligne 91) 9 hnt 94°

23h30 **Plantage PC Traitement** → Hors fichiers propre
0h30 Copie Disque D (Survay) sur disque Navette Survat
PC ramus en route

→ Début du Profil 51 (Ligne 43) 10 hnt 112°

Fin de Profil 51 (Ligne 43)

Début de Profil 52 (Ligne 92) 5 hnt 50°

Fin de profil 52 2 h 187°

Début de profil 53 (ligne 91) 3 hnt 165°

Fin de profil 53 6.7 hnt 66°

Début de profil 54 (93) 6 hnt 60°

problème canon 2 babord : mauvaise synchro

Fin de profil 54 6.5 hnt 63°

Début de profil 55 (line 45) 11 Knts 80°

▲ Canon Babord en service : 1

Fin de Profil 9 Knts 61°

Début de Profil 56 (Ligne 94) 10 Knts 54°

Fin de Profil 9 Knts 58°

Début de Profil 57 (Ligne 46) 13 Knts 62°

Fin du Profil 57 11 hnt 58°

Début de profil 58 (Ligne 101)

Fin du Profil 58 11 hnt 64°

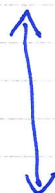
Début de profil 59 (Ligne 47)

Fin du profil 59 13 hnt 62°

Début du profil 60 (Ligne 102) 6 hnt 52°

Date	Time	Latitude	Longitude	Depth	Course	Speed
03/12	15:17	40° 47.973	27° 41.856	643	266	4.9
	15:33	40° 48.710	27° 41.824	732	84	4.4
	16:59	40° 49.585	27° 43.541	708	79	4.2
	17:22	40° 48.933	27° 43.434	732	282	5.1
	18:34	40° 47.081	27° 41.924	655	266	4.83
	18:52	40° 48.693	27° 41.771	794	82°	4.59
	20:03	40° 49.568	27° 49.510	708	80°	4.54
	20:31	40° 48.934	27° 49.655	807	276°	5.25
	21:44	40° 48.061	27° 41.895	654	264	4.69
	22:01	40° 48.671	27° 41.756	793	83°	4.98
	23:20	40° 49.557	27° 49.525	712	78°	4.19
	23:43	40° 48.910	27° 49.564	804	272°	5.34
04/12	01:01	40° 48.043	27° 41.837	660	265°	4.37
	01:20	40° 48.665	27° 41.799	792	82	4.6
	02:37	40° 48.546	27° 43.541	713	79	4.2
	03:02	40° 48.912	27° 43.633	811	274	4.6
	04:21	40° 48.034	27° 41.887	650	266	4.5
	04:41	40° 48.648	27° 41.831	784	86	4.9
	05:58	40° 48.531	27° 43.547	720	78	4.4
	06:27	40° 48.901	27° 49.646	808	274	4.81
	07:41	40° 48.021	27° 41.903	647	267	4.77
	11:18	40° 48.836	27° 49.605	811	274	4.86
	12:32	40° 47.966	27° 41.860	646	269	4.7
	12:53	40° 48.653	27° 41.832	784	80	5.2

Std by 4h



Observation

Fin de profil	60 (lin 1021)	7.3 knot	66°
Debut de profil	61 (line 48)	5.3 knot	68°
Fin de profil	61	6 knot	71°
Debut de profil	62 (95)	6 knot	53°
Fin de Profil		8 knots	53°
Debut de Profil	63 (49)	10 knots	64°
Fin de Profil		8 knots	74°
Debut de Profil	64 (96)	6 knots	43°
Fin de Profil		5 knots	350°
Debut de Profil	65 (50)	4 knots	7°
Fin de Profil	65	3 knot +	30°
Debut du Profil	66 (97)	3 knot	32°
Fin de profil	66	3.7 knot	346°
Debut du Profil	67 (51)	6 knot	0°
Fin de Profil	67	4 knot	32°
Debut de Profil	68 (98)	3 knot	23°
Fin de Profil	68	3 knot	347°
Debut de Profil	69 (52)	1.7 knot	353°
Fin de Profil	69	2 knot	88°
Debut de Profil	70 (99)	5 knots	84°
Fin de Profil		2 knots	67°
Arrêt des Bois Canons pour maintenance Machine SURBIT + Refrigerant Compressor			
Arrêt chirp - Reprise chirp sur ligne 57 (p105 et p106) pour tests après reboot de Subop			
Debut de profil	71 (103)	2 knot	163°
Fin du Profil	71		
Debut du profil	72 (53)	4 knot	82°
Fin de profil	72		

Date	Time	Latitude	Longitude	Depth	Course	Speed
06/12	14:03	40° 49.522	27° 49.577	720	77	6.4
	14:34	40° 48.825	27° 49.613	811	275	6.8
	15:48	40° 47.953	27° 41.880	641	263	6.2
	17:16	40° 48.622	27° 41.800	788	83	6.3
	18:32	40° 49.502	27° 49.525	721	76	6.83
	18:54	40° 48.815	27° 49.708	821	267	6.32
	20:11	40° 47.943	27° 41.919	631	266	6.71
	20:28	40° 48.611	27° 41.790	788	83°	6.76
	21:42	40° 49.487	27° 49.525	723	76°	6.71
	22:04	40° 48.794	27° 49.610	808	275°	6.75
	23:19	40° 47.827	27° 41.876	632	266°	6.84
	23:37	40° 48.618	27° 42.015	754	79°	6.7
05/12	00:51	40° 49.475	27° 49.536	726	73°	6.7
	01:14	40° 48.793	27° 49.621	813	269	6.8
	02:28	40° 47.906	27° 41.846	631	265	6.8
	04:05	40° 49.472	27° 49.590	736	71	6.4
	04:35	40° 48.627	27° 49.646	827	276	6.6
	05:53	40° 49.752	27° 41.817	539	269	6.5
	06:12	40° 48.396	27° 41.832	728	80°	5.0
	07:27	40° 49.280	27° 49.558	745	71°	6.67
	07:45	40° 48.608	27° 49.610	835	280°	6.69
	09:00	40° 47.743	27° 47.965	597	267	6.54

Observation

~~Debut de profil 72 (53)~~

Fin de Profil 72 (53) 3.3 knots 115°

Debut Profil 73 (104) 2.3 knots 125°

Bird tête fluke bâbord en surface, angle $\alpha = 15^\circ$

10 \Rightarrow immersion en tête ≈ 2 m
premières traces bruitées.



Birds 1-2-3 \Rightarrow fluke bâbord

Birds 4-5-6 \Rightarrow fluke tribord

Fin de Profil 73 (104) 2 knots 151°

Remontée fluke bâbord

Debut de Profil 74 (54) 3 knots 120°

Fin de Profil 9 knots 126°

Debut de Profil 75 (105) 7 knots 134°

Fin de Profil 6 knots 113°

Debut de Profil 76 (55) 6 knots 112°

Fin de Profil 7 knots 86°

Debut de Profil 77 (106) 7 knots 142°

Fin du Profil 5 knots 137°

(Reboot surface vs centrale attitude)

Debut Profil 78 (56) 5 knots 123°

Fin du Profil 13 knots 142°

Debut de Profil 79 (107) 8 knots 170°

Fin de profil 79 (107) 4 knots 200°

Fin ~~profil~~ de profil 80 (57) 4 knots 138°

Debut de profil 81 (118) 2 knots 146°

Fin de profil 81 (118) 2 knots 134°

Debut de Profil 82 (71) 7 knots 122°

Fin de Profil 11 knots 121°

Debut de Profil 83 (120) 6 knots 132°

Fin de Profil ^{passage} manivres sur le rail 6 knots 125°

Date	Time	Latitude	Longitude	Depth	Course	Speed
08/12	09:16	40°48.384	27°41.835	725	78°	5.04
	10:32	40°49.287	27°43.639	752	73°	4.5
	10:55	40°48.591	27°49.594	839	278	4.8
	12:12	40°47.722	27°41.900	598	268	4.7

Arrêt acquisition 3D

05/12	16:03	40°48.339	27°39.043	1029	218	4.77
-------	-------	-----------	-----------	------	-----	------

Observations

Vent

Debut de Profil 84 (72)

8 Knts 96°

Fin de Profil 84

10 knts 103°

Debut du Profil 85 (121)

8 knts 103°

Fin du Profil 85 (Pas d'auxiliaires hr 674 →)

3.3 knts 74°

Panne SEAL dans la girata / girata Nord pour rase-encote

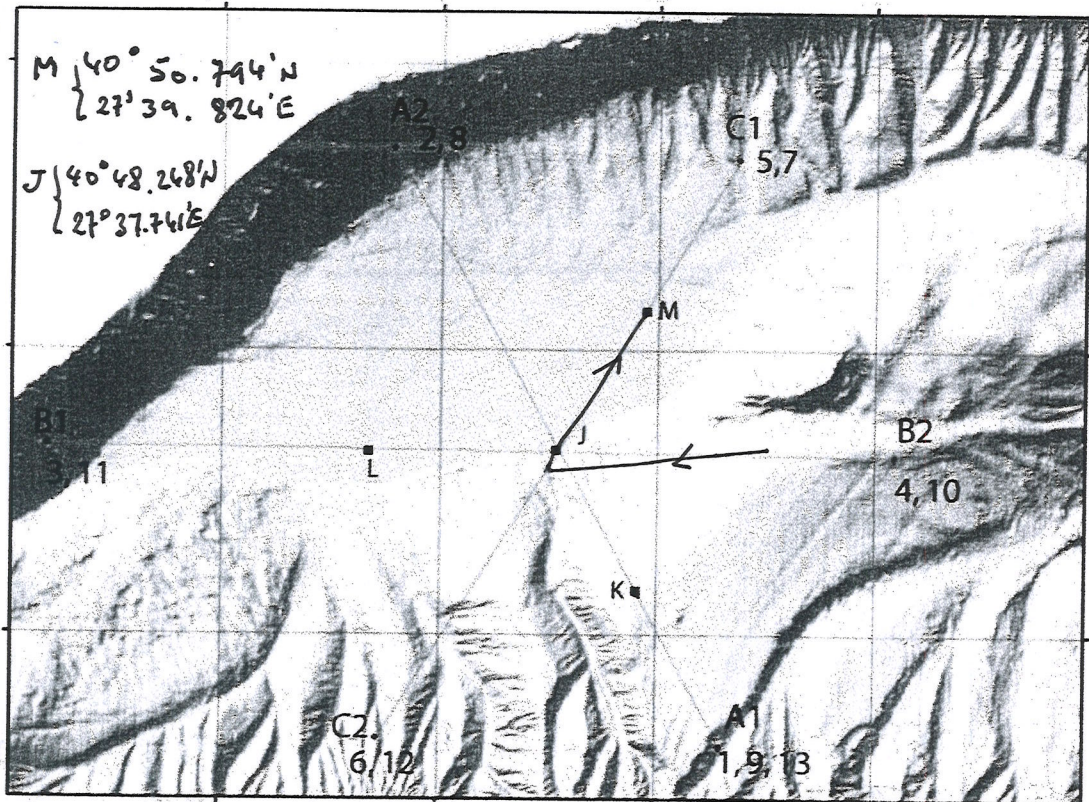


Fig. 2.8.1 : OBS locations (Points K, J, L, M) and seismic lines (A1-A2, B1-B2, C1-C2) shot by R/V Sismik-1 on May 23rd and 24. Two OBSs deployments were performed during the MarNaut cruise : 1) a four weeks deployment, with recovery during leg 4 ; 2) a four months deployment, with recovery in September 2007 with R/V Sismik-1. The piezometer has also been deployed during leg 4 in Point J, less than 40 m away from an OBS, for a duration of 4 months.

Previsional Program :

Due to problems on seismics, put EM302 - Bubble mode on and start Bubble Chasing

Date	Time	Latitude	Longitude	Depth	Course	Speed
05/12	16:12	40° 49.886	27° 38.427	976	249	5
	16:21	40° 48.068	27° 39.727	1083	350	3.4
	16:22	40° 48.180	27° 39.714	1105	355	4
	16:22	40° 48.166	27° 39.710	1110	0.6	4.2
	16:24	40° 48.259	27° 39.730	1121	19	4.4
	16:24	40° 48.301	27° 39.756	1120	30	4.4
	16:24	40° 48.308	27° 39.762	1119	32	4.4
	16:26	40° 48.372	27° 39.823	1118	42	4.2
	17:02	40° 50.836	27° 39.860	1107	35	4.6
	17:09	40° 50.885	27° 40.434	1102	129	4.9
	17:29	40° 49.181	27° 40.533	1085	181	6.9
	17:49	40° 48.363	27° 41.836	732	82	4.4
REPRISE 30						
	17:52	40° 48.404	27° 42.118	633	83	4.4
	18:55					
	19:08	40° 49.265	27° 49.702	756	84	4.61
	19:31	40° 48.592	27° 49.690	811	266	4.69
	20:41					
	20:41	40° 47.713	27° 41.989	598	267	5.05
	20:59	40° 48.354	27° 41.820	725	80°	4.62
	22:16	40° 49.280	27° 49.807	761	73	4.8

DATE	TIME	LATITUDE	LONGITUDE	DEPTH	COURSE	SPEED
05/12	22:58	40° 48.572	27° 49.640	844	262°	4.8
06/12	00:12	40° 47.691	27° 41.903	598	265°	4.6
	00:30	40° 48.332	27° 41.872	702	80° 265	4.9 4.6
	01:46	40° 49.223	27° 49.586	756	88	4.6
	02:10	40° 48.565	27° 49.656	847	253	4.6
	03:27	40° 47.683	27° 41.333	593	263	4.5
	03:43	40° 48.360	27° 41.314	706	81	4.5
	05:07	40° 49.203	27° 49.533	759	85	4.6
	05:33	40° 48.552	27° 49.501	817	266	5.4
	06:46	40° 47.676	27° 41.960	591	264	4.87
	07:04	40° 48.325	27° 41.856	704	85	4.84
	08:19	40° 49.195	27° 49.586	759	84	4.83
	08:41	40° 48.532	27° 49.415	861	268	4.43
	09:55	40° 47.661	27° 41.983	584	263	4.94
	10:18	40° 48.326	27° 41.927	702	93	5.05
	11:32	40° 49.192	27° 49.642	763	81	4.3
11:53	40° 48.523	27° 49.607	856	261	5.5	
13:03	40° 47.636	27° 41.892	587	262	5.2	

TOOLS

OBSERVATIONS

Debut de Profil 89 (123) 14h00 42°
 Enregistrement trace aux on externe
 à partir du tir 185

Fin du Profil 89 6h00 21°

Debut du Profil 90 (75) 15h00 42°
 Enregistrement trace aux on externe
 à partir du tir ≈ 100

Fin du Profil 90 16h00 43°

Debut de Profil 91 (124) 7h00 44°

Fin de Profil 91 6h00 40°

Debut de Profil 92 (76) 7h00 33°

Fin de Profil 92 10h00 37°

Debut de profil 93 (125) 10h 40°

Fin de Profil 17h00 39°

Debut de Profil 94 (77) 21h00 36°

Fin de Profil 17h00 29°

Debut de Profil 95 (126) 21h00 41°

→ Pb immersion birds haborad

Fin de Profil 16h00 39°

Debut de Profil 96 (78) 23h00 35°

→ 12.7 pbar brut

Fin de profil 96 24h00 33°

Debut de Profil 97 (127) 19h00 40°

Fin Profil 97 20h00 32°

Source Tibbard bagotte
 en Fin de profil

Nouvelle Configuration Canons

Babard 1
 Tribard 1

Tribard 3
 Babard 1

Conditions météo 20h00
 33° (ventura)

Mer : 4.5 établi

tools

EM 302 "Bubble Mode"

Avion degeo. Flute "coulé"
(2 m à 7 m dernière case)
Début enregistrement
sismique.

STARD BY KESTRO

Config. canon:
2 Tribord) OK
1 Bâbord

Observations

Profil de Fuite Burtan vers $\sim 30^\circ N$
vitesse ~ 3 nœuds - Mode EM302 "Bubble"
de Pa φ : ? $40^\circ 49.15' N$, $27^\circ 38.5' E$
 φ $40^\circ 52' N$ - $27^\circ 40.792' E$

P254 Début du Profil EM302

Passing over OBS M

c/c Cap 081 (alignement avec rail)

We are changing course to go to 3D box

Tout canon & Tribord en
passent sur alim. 3 boîte de
tir

Starting to seismic 3D

Profil 980 - 979. Line 79

Début de Profil 98(79) ~~31~~ 31°

Fin de Profil 98 ~~31~~ 32°

Début de Profil 99(128) ~~18~~ 32°

Fin de Profil 99 15 Kb 37°

Début de Profil 100 (80) 18 Kts 36°

Fin de Profil 14 Kts 36°

Début de Profil 101 (129) 14 Kts 27°

Fin de Profil 101 18 Kts (32°)

Retour du Chien de garde
sur zone

Date	Time	Latitude	Longitude	Depth	Speed	Course
06/12	22:31	40 48.271	27 41.905	691	4.82	75
	23:45	40 49.152	27 49.654	775	4.7	82
07/12	00:09	40° 48.479	27° 49.697	875	4.7	268
	01:27	40° 47.604	27° 41.946	582	4.5	264
	01:43	40° 48.248	27° 41.864	693	4.7	84
	03:03	40° 48.136	27° 43.684	778	4.2	81
	03:28	40° 48.453	27° 48.650	876	4.6	276
	04:43	40° 47.588	27° 41.930	588	4.6	266
	05:03	40° 48.244	27° 41.923	685	4.6	85
	06:18	40° 49.109	27° 49.600	775	4.4	75°
	06:39	40° 48.454	27° 49.735	880	4.80	275°
	07:53	40° 47.583	27° 41.998	582	4.67	265°
	08:10	40° 48.225	27° 41.865	689	4.76	87°
	09:25	40° 49.105	27° 49.642	785	4.64	82°
	09:45	40° 48.415	27° 49.743	882	4.70	273°
	11:02	40° 47.563	27° 41.960	580	4.1	263
	11:22	40 48.208	27 41.907	681	4.2	83
	12:40	40 49.094	027° 49.636	788	4.2	81
	13:11	40 48.422	27° 49.694	883	4.8	269
	14:24	40° 47.592	27° 41.976	578	4.8	264
	14:46	40° 48.202	27° 41.912	679	4.16	88
	16:03	40° 48.095	27° 49.837	792	4.5	81
	16:23	40° 48.410	27° 49.698	883	4.6	269
	17:42	40° 47.536	27° 41.967	578	4.7	263
	18:00	40° 48.189	27° 41.867	683	4.83	82°
	19:15	40° 49.058	27° 49.608	791	4.86	83°

Observations

Debut de profil 102 (line 81)	
Fin du profil 102	16 knot 32°
Debut de Profil 103 (line 130)	19 knot 29°
Fin du profil 103	11 knot 46°
Debut de Profil 104 (line 82)	15 knot 44°
Fin de Profil 104	15 knot 38°
Debut de Profil 105 (131)	12 knot 51°
Fin de Profil 105	
Debut de Profil 106 (83)	13 knot 38°
Fin de Profil	12 knots 32°
Debut de Profil 107 (132)	10 knots 44°
Fin de Profil	9 knots 50°
Debut de Profil 108 (84)	12 knots 51°
Fin de Profil	10 knots 38°
Debut de Profil 109 (133)	8 knots 40°
Fin du Profil	
Debut du Profil 110 (85)	8 knot 22°

Enregistrements des Voes auxiliaires de marche tres en retard

Fin Profil 110	4 knots 40°
Debut de Profil 111 (134)	10 knot 54°
Fin de Profil 111	11 knot 65°
Debut de profil 112 (86)	12 knot 65°
Fin de Profil 112	13 knot 57°
Debut de Profil 113 (135)	13 knot 64°
Fin de Profil 113	12 knot 68°
Debut de Profil 114 (87)	13 knots 73°
Fin de Profil	12 knots 58°

Date	Time	Latitude	Longitude	Depth	Speed	Course
07/12	19:32	40° 48.403	27° 49.665	886	4.83	269°
	20:46	40° 47.529	27° 41.971	585	4.80	263°
	21:05	40° 48.305	27° 41.839	708	4.54	89°
	22:19	40° 49.191	27° 49.635	768	4.8	84°
	22h 39	40° 48.524	27° 49.635	855	5.26	268°
	23:55	40° 47.636	27° 41.895	586	4.8	263
08/12	00:06	40° 48.133	27° 41.414	728	4.3	47
	01:29	40° 49.198	27° 49.658	764	4.7	87
	02:29	40° 48.534	27° 49.662	855	4.5	263
	03:44	40° 47.654	27° 41.837	588	4.9	262
	06:07	40° 48.323	27° 41.850	703	4.5	83
	05:24	40° 49.138	27° 49.534	757	4.4	73
	05:54	40° 48.640	27° 49.635	825	4.4	268
	07:08	40° 47.771	27° 41.963	598	4.72	262°
	07:32	40° 48.969	27° 41.894	782	4.63	98°
	08:43	40° 49.820	27° 49.650	648	5.00	87°
	09:03	40° 48.776	27° 49.669	806	4.75	272°
	10:17	40° 47.893	27° 41.814	630	5.07	236
	10:34	40° 48.924	27° 41.786	783	5.1	79
	11:48	40° 49.803	27° 49.529	656	4.6	81
	12:08	40° 48.758	27° 49.616	803	4.4	270
	13:20	40° 47.891	27° 41.900	624	5.7	262

Observations

Debut de Profil 115 (136)	10 knot 76°
Fin de Profil	12 knots 75°
Debut de Profil 116 (78)	12 Knots 69°
Fin de Profil 116	10 knot 66°
Debut de Profil 117 (127)	11 knot 66°

Les TB Babord et Tribord ont en de calage > 1ms

Fin du Profil 117	6 knot 51°
Debut de Profil 118 (76)	4 knot 52°

Pb de presentation ~~sur le profil 77~~, profil initial 77: en route sur profil 76 à 600m du point d'entrée

Fin du Profil 118	8 knot 30°
Debut de Profil 119 (118) (128)	10 knot 25°
Fin de Profil 119	8 knot 35°
Debut de Profil 120 (77)	8 knot 48°
Fin de Profil 120	11 knot 34°
Debut de Profil 121 (118)	11 Knots 27°
Fin de Profil	7 Knots 36°
Debut de Profil 122 (30)	6 Knots 40°
Fin de Profil	9 Knots 43°
Debut de Profil 123 (108)	6 Knots 37°

09:30 Passage Pate Containers 340m 10000 EVP

Fin du Profil 123	5 knot 4°
Debut du Profil 124 (32)	3 knot 19°
Fin de Profil 124	4 knot 123
Debut du Profil 125 (109)	4 knot 82°
Fin de Profil 125	5 knot 129°

Date	Time	Latitude	Longitude	Depth	Speed	Course
08/12	13:39	40 48.765	27 41.844	791	4.8	79.7
	14:55	40 48.638	27 43.537	683	4.7	73.7
	15:13	40 48.750	27 43.653	803	4.3	271
	16:36	40 47.867	27 41.864	623	4.6	260
	16:55	40 48.624	27 41.775	780	4.7	83
	18:10	40 49.198	27 49.523	721	4.87	84°
	18:22	40 48.732	27 49.566	803	4.98	270°
	19:37	40 47.862	27 41.936	617	4.95	261°
	19:59	40 49.031	27 41.700	787	4.71	86°
	21:09	40 49.899	27 43.446	628	4.98	85°
	21:32	40 48.727	27 43.680	805	4.86	265°
	22:44	40 47.845	27 41.921	619	4.2	262
	23:06	40 49.077	27 41.958	763	4.8	96
09/12	00:13	40 49.920	27 49.478	623	5.1	83
	00:37	40 48.725	27 49.655	805	4.7	262
	01:49	40 47.832	27 41.840	618	4.95	262
	02:13	40 48.058	27 41.685	733	4.3	83
	03:26	40 43.933	27 43.692	626	4.3	82
	03:53	40 48.673	27 43.568	803	4.7	263
	05:05	40 49.815	27 41.883	603	4.8	261
	05:30	40 43.081	27 41.735	786	4.7	84
	06:41	40 49.943	27 49.433	617	4.92	82°
	07:04	40 48.694	27 49.686	809	4.67	266°
	08:16	40 47.810	27 41.948	603	4.86	261°

Observation

Debut de Profil 126 (44) 5 knot 134°
Fin de Profil 126 5 knot 87°
Debut de Profil 127 (110) 4 knot 82°
Fin de Profil 127 8 knot 76°
Debut de Profil 128 (54) 10 knot 84°
Fin de Profil 10 knot 71°
Debut de Profil 129 (111)
Fin de Profil 8 knot 71°
Debut de Profil 130 (24) 11 knot 77°
Fin de Profil 9 knot 54°
Debut de Profil 131 (112) 8 knot 60°
Fin de Profil 131 9 knot 57°
Debut de Profil 132 (23) 10 knot 60°
Fin de Profil 10 knot 60°
Debut de Profil 133 (113) 10 knot 66°

Erreur d'écriture sur le disque ⇒ Cube mort !!
ReStart From scratch

→ Fin Profil 133

Debut de Profil 134 (22) 11 knot 68°
Fin de Profil 134 12 knot 86°
Debut de Profil ¹³⁵ (114) 9 knot 86°
Fin de Profil 135 9 knot 86°
Debut de Profil 136 (21) 10 knot 89°
Fin de Profil 9 knot 90°
Debut de Profil 137 (115) 8 knot 101°
Fin de Profil

Date	Time	Latitude	Longitude	Depth	Speed	Course
09/12	08:37	40°49.	27°41.	734	4.8	85°
	09:49	40°49.892	27°49.441	631	4.8	85°
	10:12	40°48.671	27°49.675	819	3.9	265°
	11:24	40°47.790	27°41.903	605	4.9	261
	11:47	40°49.087	27°41.743	784	5.0	87
	12:58	40°49.953	27°49.466	618	5.0	87
	13:23	40°48.648	27°49.596	821	4.0	267
	14:34	40°47.771	27°41.874	666	4	262
	14:58	40°49.101	27°41.752	782	4.9	86
	16:11	40°49.871	27°49.436	610	4.9	84
	16:36	40°48.645	27°49.636	823	5	269
	17:46	40°47.771	27°41.808	603	5.2	265
	18:11	40°49.106	27°41.672	793	4.90	82°
	19:22	40°49.973	27°49.424	609	4.78	84°
	19:43	40°49.050	27°49.626	779	4.77	263°
	20:55	40°48.177	27°41.879	682	5.12	264°
	21:14	40°49.120	27°41.691	792	4.89	86°
	21:25	40°49.281	27°43.124	567	5.0	81°
	21:28	40°50.013	27°49.510	610	4.8	80
	22:28	40°50.013	27°49.510	610	4.8	80
	22:51	40°48.972	27°49.586	794	5.2	262

Observations

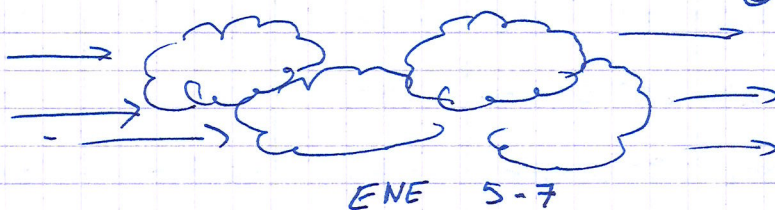
Début de Profil 138 (24)	14 knots 78°
Fin de Profil	11 knots 77°
Début de Profil 139 (116)	7 knots 101°
Fin de Profil	11 knots 119°
Début de Profil 140 (20)	13 knots 104°
Fin de Profil	15 knots 99°
Début de Profil 141 (117)	11 knots 98°
Fin de Profil 141	10 knots 32°
Début de Profil 142 (19)	13 knots 86°
Fin de Profil 142	16 knots 68°
Début de Profil 143 (118)	13 knots 68°
Fin de Profil 143	10 knots 85°
Début de Profil 144 (18)	14 knots 78°
Fin de Profil	14 knots 80°
Début de Profil 145 (88)	13 knots 91°
Fin de Profil	17 knots 69°
Début de Profil 146 (17)	18 knots 20°

Vents 20 knots \Rightarrow KAWTAUPLAN Ce lieu
CHIEN DE GARDE QUITE LA ZONE

Fin du Profil 146

20 knots 70°

STOP High Resolution 3D



Passage EM302 en mode bulle (23:30)

le début du profil

Date	Time	Latitude	Longitude	Depth	Speed	Course
10/12						
	00:28	40°47.801	27°39.118	897	4.5	265
	06:41	40°53.879	27°58.601	970.6	1.8	72.6
	06:45	40°53.870	27°58.818	950	2.4	90.16
	06:53	40°53.850	27°59.260	991.2	2.35	88.9
	07:11	40°53.861	28°00.267	1077	2.05	20.77
	07:09	40°53.830	28°00.168	1045	2.99	92.09
	07:13	40°53.921	28°00.101	1004	4.94	272.9
	07:16	40°53.796	27°59.713	1033	7.17	258.79
	↙	40°53.772	27°59.562	1049	7.45	260.87
	07:17	40°53.765	27°59.527	1044	7.38	258.28
	07:22	40°53.574	27°59.716	1118.8	5.4	85.4
	07:24	40°53.597	27°59.955	1122	5.72	87
	07:25	40°53.603	28°00.047	1147	5.63	88
	07:26	40°53.618	28°00.206	1138	5.71	85.6
	07:28	40°53.651	28°00.472	1123	6.28	86.09
	07:34	40°53.727	28°01.273	1095	06.68	87.30
	↙	40°53.729	28°01.570	1100	06.50	87.45
	07:39	40°53.802	28°02.078	1076	06.87	86.65
	07:40	40°53.806	28°02.124	1073	06.91	86.76
	07:46	40°53.903	28°03.135	1112	07.10	87.16
	07:49	40°53.934	28°03.480	1046	07.08	87.78

Observations

Consigne

Even' E M 302 + Chip + Bulle

Profil R → S → T → U → V → W (voir page précédente)

Remonter la flûte dès 7h30 en essayant de rester sur
les profils E M 302

c/c pour s'aligner sur profil RS

00:10	fin des profils 3D
05:13	remonté des streamers

Echo bab

Echo bab

Flûtes et canons à bord

Le Navire fait route pour se présenter au point S

Echo trib

Echo babard

Echo babard

Echo babard

Echo tribard

Passage sur le point S

Echo bab

Echo bab

Echo bab

Echo tribard

07:35 Günay appelle le chien de garde

pour donner congé:

FIN CONTRAT CHIEN DE GARDE

Echo tribard

Echo babard

Echo babard

Echo tribard

Echo babard

Echo babard

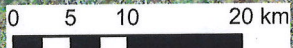
MARMESONET 2009

04-25 11 2009 R/V Suroit

Gas bubble detection

Istanbul

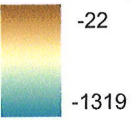
Sea of Marmara



▲ EM302 acoustic anomalies detected in the water column Marmesonet 2009

— Faults

EM300 bathymetry (m)
Marmara (2000)



27°25'0"E 27°35'0"E 27°45'0"E 27°55'0"E 28°5'0"E 28°15'0"E 28°25'0"E 28°35'0"E 28°45'0"E 28°55'0"E 29°5'0"E 29°15'0"E 29°25'0"E

41°15'0"N
41°0'0"N
40°50'0"N
40°40'0"N
40°30'0"N
40°20'0"N

Programme du 10/12/2009

R	40° 51,6	27° 42,0	
S	40° 53,6	28° 00,0	
T	40° 54,05	28° 04,7	
U	40° 53,25	28° 06,1	
V	40° 51,8	27° 53,0	
W	40° 52,2	27° 53,0	
X	40° 53,65	28° 06,00	
Y	40° 52,7	28° 08,00	
Z	40° 51,0	27° 53,00	
CTD HR1	40° 49,0	27° 48,0	~ 760 m
CTD HR2	40° 48,3	27° 44,0	~ 600 m
CTD HR3	40° 49,5	27° 40,4	~ 1400 m

PID	X LON.	Y LAT.
P01	27° 57.037' E	40° 48.266' N
P02	27° 42.001' E	40° 46.646' N
P03	27° 42.010' E	40° 45.432' N
P04	28° 6.741' E	40° 48.167' N
P05	28° 9.974' E	40° 45.305' N
P06	27° 40.912' E	40° 42.087' N
P07	27° 40.885' E	40° 44.486' N
P08	28° 13.191' E	40° 48.075' N

Date	Time	Latitude	Longitude	Depth	Speed	Course
10/12	07:54	40° 54.011	28° 04.298	1051	7.09	88.71
	"	40° 54.013	28° 04.321	1053	7.08	88.84
	07:58	40° 53.944	28° 04.892	1002	6.83	132.9
	08:00	40° 53.770	28° 05.206	1088	7.66	131.24
	08:05	40° 53,456	28° 05,780	1115,4		
	08:08	40° 53,199	28° 05,556	1137		
	08:09:56	40° 53,169	28° 05,568	1184	5,17	269,59
	08:10:15	40° 53,167	28° 05,523	1190	5,12	270,34
	08:10:41	40° 53,164	28° 05,163	1157		
	08:11:19	40° 53,152	28° 05,274	1100		
	08:47:12	40° 52,344	27° 57,965	1102		
	08:47:46	40° 52,334	27° 57,941	1198		
	08:59:16	40° 52,288	27° 57,593	1155		
	08:51:12	40° 52,249	27° 57,224	1175		
	08:51:14	40° 52,229	27° 57,010	1177		
	9:00:11	40° 52,048	27° 55,365	977		
	9:01:04	40° 52,027	27° 55,181	963		
	09:01:31	40° 52,017	27° 55,088	949		
	09:01:07	40° 52,003	27° 54,965	949		
	09:02:23	40° 51,996	27° 54,909	948		
	09:02:34	40° 51,992	27° 54,871	947		
	09:16:51	40° 52,156	27° 53,168	877,4	5,99	89,05
	09:18:50	40° 52,240	27° 53,438	854	6,37	87,05
	09:19:01	40° 52,214	27° 53,464	889	6,36	87,4
	09:16:29	40° 52,372	27° 54,519	919		
	09:16:53	40° 52,378	27° 54,630	918		
	09:28:49	40° 52,408	27° 54,924	916,6		

Observations

Echo babord

Echo tribord

Début du profil TU

Echo bab

trib

Centre

SM302 Fin P255

SM302 Deb P256 - En passe au 0

Centre

trib

trib

trib

trib

trib

trib

trib

trib

Centre

trib

trib

trib (port)

Sur le point W début profil WX

Fin P256

Deb P257 (WX)

trib

trib (port)

trib

Date	Hour	Latitude	Longitude	Cap	Speed	Prof
10/12	03:57:56	40° 52, 736	27° 57, 767			1147
	05:48:26	40° 52, 749	27° 57, 873			1155
	09:19:13	40° 52, 766	27° 58, 003			1173, 6 1173, 6
	09:51:30	40° 52, 805	27° 58, 338			1155
	10:03:26	40° 52.999	28° 00.180	85.97	7.09	1210
	10:07:39	40° 53.076	28° 00.865	85.61	7.35	1208
	10:10:25	40° 53.134	28° 01.350	86.27	7.25	1213.6
	10:11:25	40° 53.147	28° 01.461	87.24	7.28	1215.4
	"	40° 53.148	28° 01.474	87.24	7.29	1214.4
	"	40° 53.151	28° 01.498	87.18	7.28	1215.2
	10:14:04	40° 53.192	28° 01.878	87.31	7.25	1214.4
		40° 53.196	28° 01.909	87.04	7.32	1217.2
		40° 53.198	28° 01.930	86.80	7.38	1210.8
		40° 53.207	28° 02.021	86.38	7.42	1208.8
	10:15:14	40° 53.211	28° 02.067	86.52	7.40	1208
		40° 53.212	28° 02.078	86.61	7.40	1203
	10:17:51	40° 53.258	28° 02.484	86.95	7.33	1194
		40° 53.258	28° 02.484	86.95	7.33	1194
		40° 53.269	28° 02.562	86.61	7.27	1202
	10:41	40° 53.706	28° 06.312	86.95 91	7.2	966
	11:02	40° 52.680	28° 07.819	263	9.2	1114
	12:13	40° 50.938	27° 52.802	253	9.4	911
	12:42	40° 49.125	27° 48.397	235	5.7	729
	13:17	40° 49.026	27° 47.96	/	/	739
	13:45	40° 49.141	27° 47.8	/	/	720

Observations

sb

trib

bab

bb

bab

tribard

babard

babard

babard

babard

babard

babard

babard

~~tribard~~

~~babard~~ ~~tribard~~

~~babard~~

~~babard~~

~~babard~~

~~babard~~

babard

tribard

babard

babard

babard

babard

at the point of X

at the point of Y

at the point of Z

End of line.

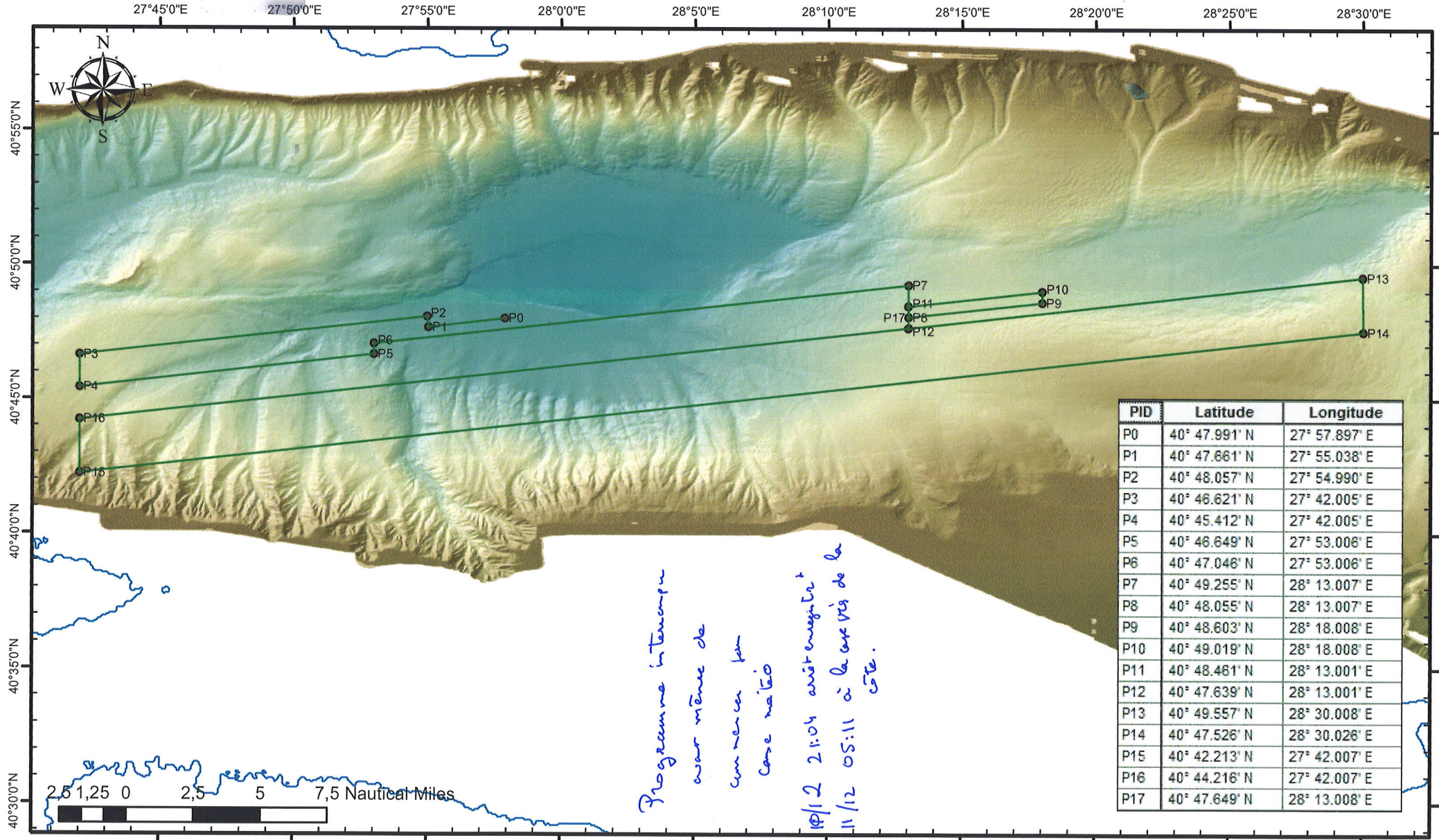
Presentation sur la mesure (TD)

ETD in water. STOP recording CHIRP, stop ETD

CTD on board

Date	Time	Latitude	Longitude	Depth	Speed	Course
10/12	14:15	40° 48.354	27° 44.634	602	6.5	253
	14:17	40° 48.287	27° 44.438	594	6.4	258
	14:21	40° 48.276	27° 44.055	600	2.3	316
	14:22					
	14:23	40° 48.287	27° 44.028	602	0.85	349
	14:42	40° 48.318	27° 43.894	610	0.9	338
	15:01	40° 48.785	27° 42.826	739	8.3	286
	15:04	40° 48.847	27° 42.537	775	8.3	285
	15:15	40° 49.249	27° 40.503	1104	7.2	300
	16:16	40° 49.660	27° 41.077	1086	5.6	90
	16:16					
	16:18	40° 49.666	27° 41.280	1044	5.6	90
	18:25	40° 45.45	27° 49.7	738	5.90	83
	19:41	40° 49.035	27° 58.05	1247	8.07	17°
	21:04	40° 56.341	27° 54.681	72	8.31	271
11/12	05:11	40° 55.99	27° 39.24	69	2.2	96

10.12.2009 - Plan for Night



Observations

Programme interrompu
 car même de
 commencer par
 case n°10
 10/12 21:04 arrêt enregistré
 11/12 05:11 à la capée de la
 côte.

AC
 STOG

Observations

echo trib

echo trib

echo center

echo center

echo center

We have stopped CTD (CTD is out)

echo bab

echo bab

echo bab

echo trib

echo trib

echo trib

le temps se dégrade. Données de mauvaise qualité

CC

Données inutilisables. 35 secondes de vent

STOP RECORDING EN302. sup CHIRP

} données
mauvaises
Sudden
bruit

STANDBY METEO AU LARGE DE TEKIRDAG

Programme nuit du 11 au 12 décembre 2009

Si vent faible et si les données sont bonnes

levé EK302 + CHIRP

P 316 (montant) de $28^{\circ} 33' E$ à $28^{\circ} 54' E$

P 319 (descendant) de $28^{\circ} 52' E$ à $28^{\circ} 35' E$

P 317 (montant) de $28^{\circ} 35' E$ à $28^{\circ} 54' E$

~~P 318 (montant) de $28^{\circ} 35' E$ à 28°~~
descendant

P 318 (descendant) de $28^{\circ} 53.5' E$ à $28^{\circ} 35' E$

P 315 (montant) de $28^{\circ} 35' E$ à $28^{\circ} 54' E$

P 320 (descendant) de $28^{\circ} 54' E$ à $28^{\circ} 35' E$

Courbes vitesse 5 noeds

mode dual (double ping)

Objectif du levé: comparer double ping et simple ping.

Sur une zone déjà cartée avec le simple ping

Day	Hour	Lat	Long	Course	Speed	Depth	Tools
11/12/09	22:25	41°00.8	28°23.07	22°	1.06	58.20	EM302 CHIRP
12/12/09	00:04	40°49.988	28°23.156	91°	5.4	769	
	04:16	40°53.123	28°51.673	76°	5.3	589	"
	04:36	40°54.278	28°51.187	262°	5.1	169	"
	07:02	40°52.502	28°35.074	262	5.6	404	"
	08:03	40°54.694	28°33.092	310	1.6	91	
	08:37	40°51.667	28°35.131	313	4.7	91	EM302+Chirp
	10:55	40°53.760	28°51.758	333	3.4	217	
	11:03	40°53.878	28°51.207	274.9	4.8	436.9	"
	12:39	40°52.975	28°41.924	332	4.7	777	"
	13:02	40°54.911	28°41.846	338	3.85	84	
	14:00	40°57.164	28°42.902	136°	/	56	
	20:00						
	20:31	40°54.604	28°41.951	178			
	20:49						EM302 CHIRP
	21:52	40°52.062	28°34.818	269	5.1	385	
	22:07	40°50.873	28°35.31	372	4.5	371	
13/12/09	00h54	N 40°52.8324	E 28°53.296	82	4.7	766	
	00h54						//
	03h00	N 40°50.699	E 28°2,306	44,8°	1,4	93	//
	03h11	N 40°50,771	E 28°2,488	46,2°	0,2	92	
	04h00	N 40°49,821	E 28°3,827	151,8°	7,8	100	//
	05h00	N 40°43,059	E 28°6,336	309,6°	1,5	1250	//

Observations

Start Recording EM 302 + CHIRP

Profil 724
SU 199

Long EM 302
pour CHIRP

Route vers le profil P316

Début profil P316 vers le'est à partir de $28^{\circ}23'E$ - $28^{\circ}54'E$

Fin profil 316

Début profil 319

Vent vrai 337° 14 knts - Fin Profil 319

↳ On sort du DST pour aller au calme et mettre les flûtes à l'eau.
→ Fin de manœuvre sur les flûtes (remise en config 2D). retour sur le profil.

Début profil sur P317

Fin profil 317 c/c Présence de navires c/c à 3 nauts.

Début du profil 318

On quitte le profil 318 pour rejoindre le point de rencontre avec le bateau de transfert de personnel.

ARRÊT Acquisition EM 302 et CHIRP. On est sur le plateau.

Route vers plateau de la pilobline
rencontrée

— En station en attente de la pilobline

Récupération de nouveaux embarqués IN PICHAVANT, DROU, MATTIA, REVERS
DST: KER, TARY, THOMAS, GARINAS,
Adelin

Mise en route EM 302 + Soudure

Reprise du Profil 318

Fin de profil P318

Début de profil P315

Fin du profil P315

Chirp: SU 211 et EM 302: 769 (profil à cap non constant)

Chirp: SU 212 et EM 302: 774

Arrêt des enregistrements Chirp et EM 302. Navire en station à l'abri du mauvais temps.

Reprise des enregistrements Chirp: SU 213 et EM 302: 775

En station. Arrêt des enregistrements.

Day	Hour	Lat	Long	Course	Speed	Depth	Tools
13/12							
13/12/09	05h 15	N 40° 43,117	E 29° 6,732	358°, 3	3,2	1250	Chirp / EM302
	05h 47	N 40° 42,132	E 29° 9,330	23, 4°	4,8	1170	"
	06h 50	40° 45, 225	29 11, 79				
	07:08	40° 46.713	29° 11.427	206	3.1	321	Chirp, EM302 Mode
	07:28	40° 45.821	29° 09.379	210	5.9	1036	
	08:08	40° 42.98	29° 06.966	219	4.7	1253	"
	08:39	40° 40.914	29° 05.206	220	4.7	854	
	09:03	40° 42.071	29° 04.028	42.9	5.12	1194.2	"
	09:08	40° 42.437	29° 04.405	34.87	5.06	1212	
	09:22	40° 43.440	29° 05.233	31.67	5.28	1250	
	09:23	40° 43.541	29° 05.310	31.41	5.34	1250	
	//	40° 43.565	29° 05.329	31.94	05.38	1252.4	
	09:30	40° 44.066	29° 05.763	33.85	05.20	1273.2	
	09:58	40° 45.990	29° 07.494	45.26	05.08	1230.4	
		40° 45.986	29° 07.532	47.81	05.53	1225	
	10:30	40° 45.822	29° 11.308	226	5.83	820	
	11:28	40° 40.988	29° 07.414	217	5.43	780	
	12:12	40° 43.311	29° 06.774	210	4.16	1257	

Arise
and leave

Observations

En arrivant sur BOB, faire le profil CHIRP suivant:

Début 40° 45.167'N 29° 11.676' E

Fin 40° 42.132'N 29° 9.317' E

Reprise enregistrement Chirp: SU 214 et EM302: 778

Début de profil PØ8 (fiche AUV Dive 13). Chirp: SU 215 et EM302: 780

Fin du profil PØ8 - En station pour stand-by météo

Route pour profil CHIRP passant sur BOB. 5 noeuds.

Bulle: single ring + enregistrement colonne d'eau

Début de Profil Est CHIRP 216
EM302 784

Passage sur BOB mais niveau de bulles faible - Vent 20 noeuds. N 348
Hors l'état de la mer différent qu'au 1^{er} leg. Ici Force ~ 5. Vague 1 m à 1.5 m

- 3 Hypothèses:
- H1. Etat de mer différent
 - H2. PØ de sondage
 - H3. Variation réelle de l'activité "Bulle"

Fin de profil est CHIRP

Début de profil CHIRP 217
line 788

Echo babord

Echo tribord

Echo babord

Echo babord

Echo babord

Fin de profil CHIRP 217 et line 788

Echo tribord

Début de profil, N3.53. CHIRP 219. EM302 ligne 792

~~Début~~ de profil

Fin

Arrivée sur BOB. PØ de bulles comparé au leg I

Mise à l'eau de la base acoustique

Profil Est

PT Sud 40° 42' N - 29° 4.00' E S1
Nord 40° 46' N - 29° 07.50' E N1

Profil Ouest

PT Sud 40° 41' N - 29° 53' E S2
Nord 40° 46' N - 29° 9.5' E N2

Profil Est-Est

Nord 40° 46' N - 29° 11.5' E N3
Sud 40° 41' N - 29° 7.4' E S3

Date	Time	Lat	Long	Course	Speed	Depth	Tools
13/12	12:42	40°42.966	29°07.365	152	1	1253	
	13:11	40°42.999	29°07.547	-	-	-	
	13:48	40°42.869	29°07.547	-	-	-	EM302 +CHIRP
	15:25	40°43.851	28°51.861	266	7.98	1046	
	16:36	40°42.063	28°39.279	265	8.2	414	
	16:37	40°42.045	28°39.155	265	8.2	415	
	16:59	40°41.485	28°35.285	264.26	8.2	607.8	
		40°41.485	28°35.285	264.26	8.2	607.8	
		40°41.480	28°35.249	264.23	8.2	616.2	
		40°41.469	28°35.175	264.15	8.24	613.8	
	17:00	40°41.465	28°35.146	264.11	8.24	610.8	
		40°41.451	28°35.057	263.9	8.25	596	
	17:10	40°41.194	28°33.300	264.3	8.24	411	
		40°41.189	28°33.267	264.1	8.25	405.6	
		40°41.188	28°33.255	264.1	8.24	405.4	
	17:11	40°41.163	28°33.085	264.35	8.18	409.8	
	17:12	40°41.153	28°32.909	271.3	7.98	402.4	
		40°41.154	28°32.871	272.9	7.98	403.4	
	17:13	40°41.154	28°32.844	273.8	8.01	405.8	
	17:42	40°41.702	28°27.706	281.15	8.05	376.4	
	18:00	40°42.047	28°24.369	281.37	8.01	320.2	
	18:05						
	18:18						
	18:34						
	19:23	40°43.735	28°28.337	84.35	8.03	419.4	
	19:30	40°43.921	28°29.617	84.06	8.02	479.2	

Observations

Chirp Echo babord

Début de profil 320 Mode dual

Echo babord

Fin de profil 320 longitude $28^{\circ}32.675E$ C/C

Chirp P Début profil P312 vers l'est

La bête P320 - P319 - P318 - P317 - P316 - P315
entre $28^{\circ}34'$ et $28^{\circ}54'E$ a été entièrement
couverte en mode multiping à 5 noeuds
et en mode monoping à 8 noeuds.

Fin des profils (Chirp: SU 229 / EM 302: 834)

Enregistrements jusqu'à l'arrivée de la pilotine. Chirp: SU 230 / EM 302: 835

Fin des enregistrements. (Chirp: SU 230 / EM 302: 838)

Rendez vous Pibte - Pibte à bord.

Arrivée Istanbul. Fin de la mission