

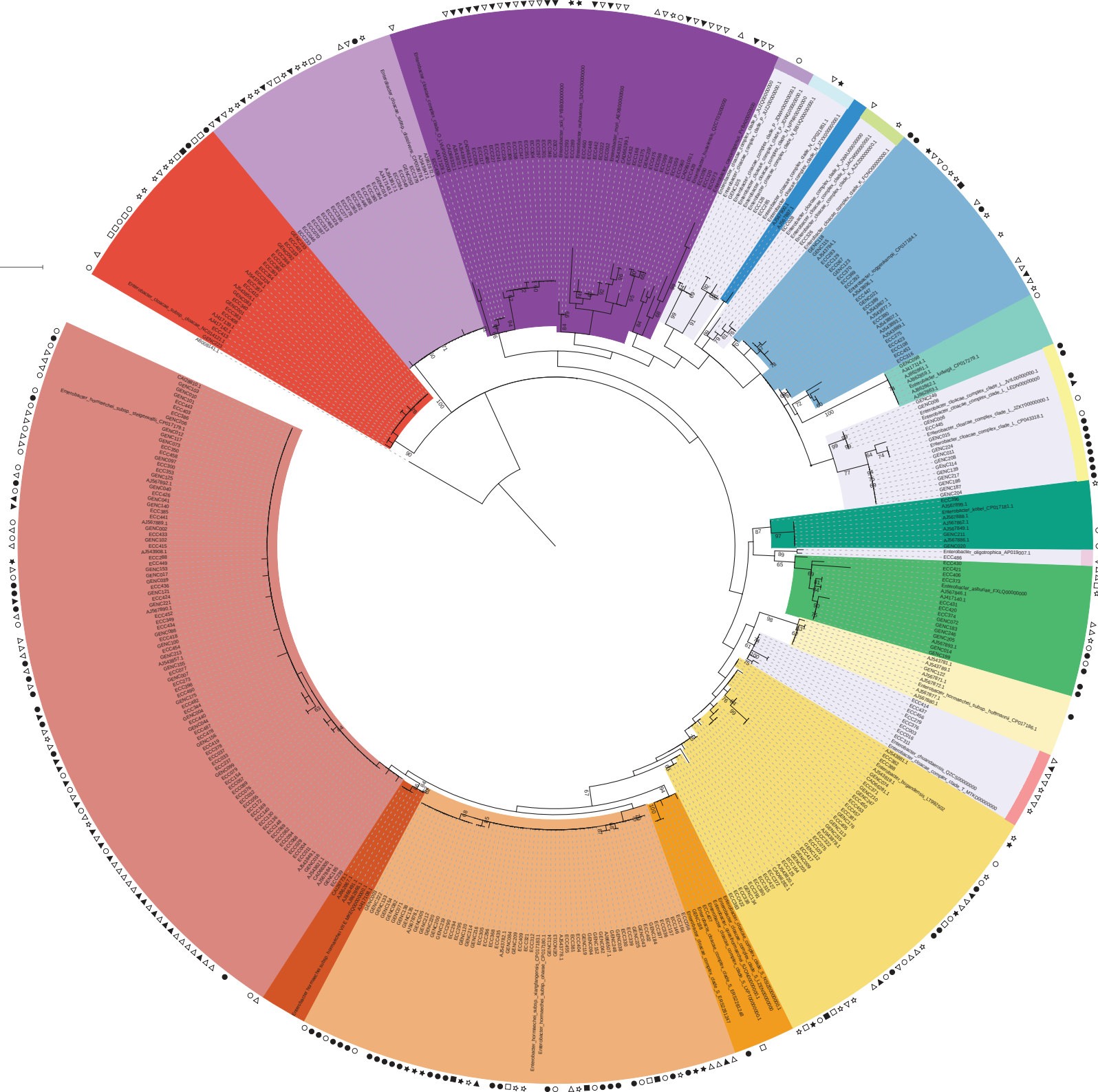
Tree scale: 0.1

Hsp60 cluster

- I
- II
- III
- IV
- V
- VI
- VII
- VIII
- IX
- X
- XI
- XII
- XIII
- XIV
- Undefined

Undefined cluster

- UD1
- UD2
- UD3
- UD4
- UD5
- UD6



**Supplementary Figure 1. Maximum likelihood phylogenetic tree based on the partial sequence *hsp60* gene of *E. cloacae* complex (ECC) isolates recovered in Guadeloupe (n=313).**

Maximum likelihood phylogenetic reconstructions were performed with RAxML software (100 bootstrap replicates), and the tree rooted with *Klebsiella aerogenes hsp60* sequence (AB008141.1) was drawn with iTOL. All the sequences used as reference in the tree have a corresponding GenBank accession number, and only sequences extracted from whole-genome of ECC strains were labelled with current names. Each *hsp60* cluster is identified by a specific color, and bootstrap values  $\geq 60$  are indicated. *Hsp60* sequences from C-X, which correspond to *Lelliottia nimipressuralis* (formerly *Enterobacter nimipressuralis*) are inserted (AJ567887.1, AJ567900.1). For better readability, C-IV nodes are grouped. The hosts of each local strain are specified by a circle (human), a square (livestock), a star (fresh produce), a right-pointing triangle (water), or a left-pointing triangle (*Anolis*). Phenotypes are indicated by a white form for wild-type against beta-lactam antibiotics, and a black form for third-generation cephalosporin-resistant strains. The global distribution is provided in **Table 3**, and all *hsp60* partial sequences are available in **Supplementary Table 2**.

List of ECC partial *hsp60* sequences included in this figure (associated cluster: C or UD, and accession number):

**C-I:** AJ417140.1, AJ567846.1, AJ567893.1, FXLQ00000000; **C-II:** AJ567849.1, AJ567862.1, AJ567886.1, AJ567888.1, AJ567899.1, CP017181.1, **C-III:** AJ543781.1, AJ543789.1, AJ567871.1, AJ567872.1, AJ567877.1, AJ567880.1, CP017186.1; **C-IV:** AJ543784.1, AJ543806.1, AJ543807.1, AJ543867.1, AJ543877.1, AJ543889.1, AJ543893.1, CP017184.1; **C-V:** AJ417114.1, AJ862859.1, AJ862861.1, AJ862862.1, AJ862863.1, CP017279.1; **C-VI:** AJ543778.1, AJ543782.1, AJ567878.1, AJ866507.1, CP017180.1, CP017183.1; **C-VII:** AJ417108.1, AJ862866.1, AJ862867.1, AJ866491.1, CAI28773.1, MKEQ00000000.1; **C-VIII:** AJ543821.1, AJ543849.1, AJ543857.1, AJ543908.1, AJ567884.1, AJ567889.1, AJ567890.1, AJ567892.1, CAD66305, CAI28810.1, CP017179.1; **C-IX:** AJ543819.1, AJ543820.1, AJ543878.1, AJ543881.1, CAD66281.1, CAD66282.1, LT992502; **C-XI:** AJ417139.1, AJ417142.1, AJ543768.1, AJ543855.1, NC014121.1; **C-XII:** AJ417143.1, AJ543817.1, AJ543847.1, AJ862872.1, CP003678.1; **C-xiii:** AJ417128.1, AJ543837.1, AJ543870.1, AJ543872.1, CAD66299.1, CAD66332.1, CAD66334.1, CAD99100.1, LVUF00000000, FYBB00000000, SJO00000000, AEXB00000000, QZCT01000000, FYBA00000000; **C-XIV:** ERS2281247, ERS2281248, LXPT00000000.1, LZEN00000000, NSIZ00000000.1, SJON00000000.1; **UD1:** JDWG00000000.1, JDWH00000000.1, JUZJ00000000.1, JUZQ00000000; **UD2:** BBUQ00000000.1, CP021851.1, JZYX00000000.1, NPNR00000000; **UD3:** AZXZ00000000.1, FCNO00000000.1, JACW00000000.1, JWU00000000; **UD4:** CP043318.1, JUIL00000000.1, JZKT00000000.1, LEDN00000000; **UD5:** AP019007.1; **UD6:** MTKD00000000, QZCS00000000.

Supplementary Figure 1 is detailed on the following images:

