

What is the menu today in a subantarctic kelp food web from the Kerguelen islands? Phytodetritus, phytoplankton and phytobenthos; not living kelp

Baptiste Le Bourg, Thomas Saucède, Anouk Charpentier, Gilles Lepoint, Loïc N Michel

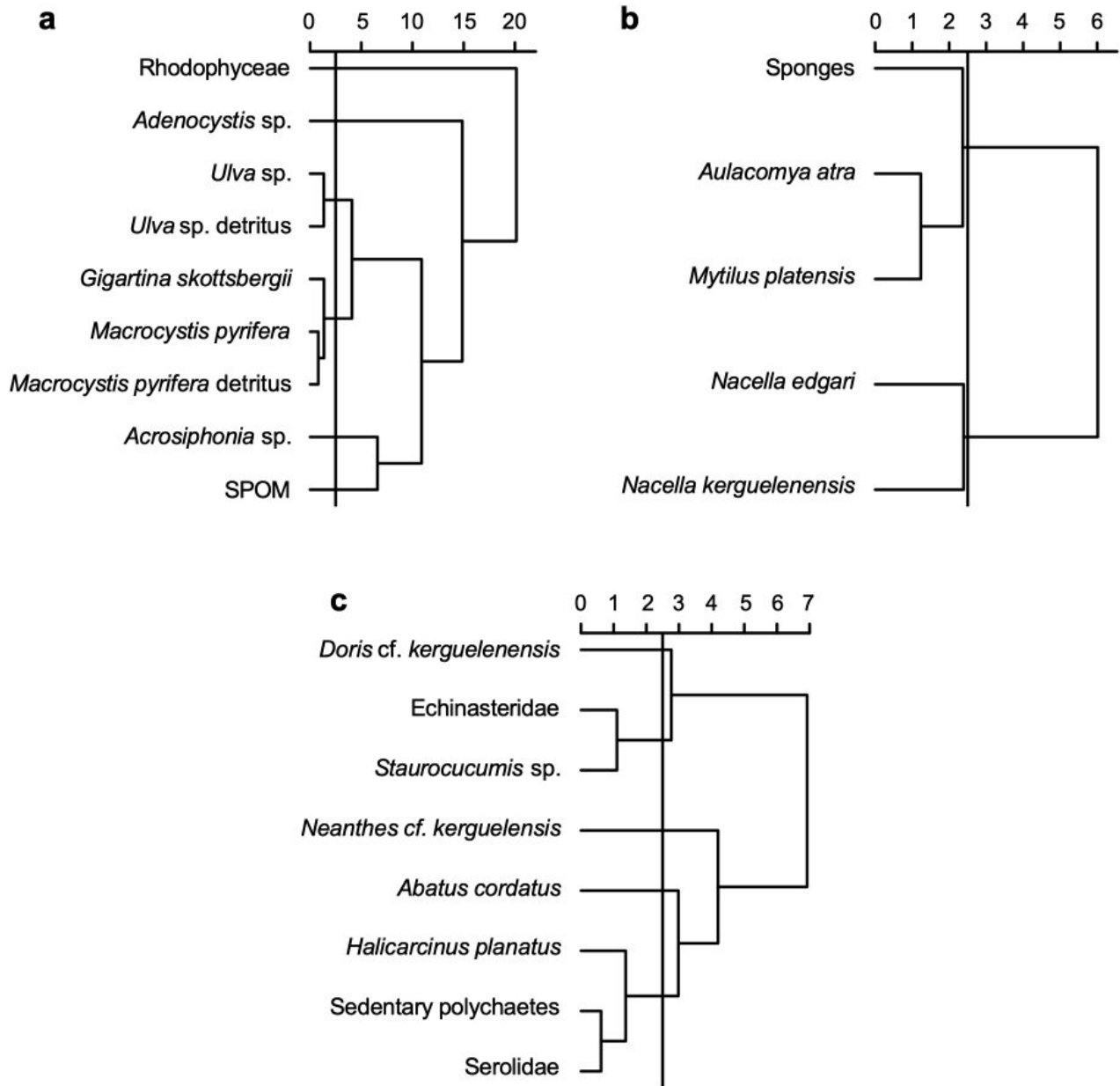


Fig. S1. Hierarchical clustering analysis of average $\delta^{13}\text{C}$, $\delta^{15}\text{N}$ and $\delta^{34}\text{S}$ values (Euclidean distance, Ward method) for each trophic group. Organism groups with similar isotopic values (Euclidean distance < 2.5) were combined into food sources following clustering prior to being used in mixing models. Results for a) primary producers and/or organic matter sources (sediment was not included in this clustering as no $\delta^{34}\text{S}$ values were available for this source), b) primary consumers and c) the mid-trophic level group.