
Growth regulation in brook charr *Salvelinus fontinalis*

Martínez-Silva Maria A. ^{1,*}, Dupont-Prinet Aurélie ¹, Houle Carolyne ², Vagner Marie ³, Garant Dany ², Bernatchez Louis ⁴, Audet Céline ¹

¹ Institut des Sciences de la mer de Rimouski, Université du Québec à Rimouski, Rimouski, QC G5L 3A1, Canada

² Département de Biologie, Université du Sherbrooke, Sherbrooke, QC J1K 2R1, Canada

³ Laboratoire des Sciences de l'Environnement Marin, UMR 6539 (CNRS/Univ Brest/IRD/Ifremer), Plouzané 29280, France

⁴ Institut de Biologie Intégrative et des Systèmes (IBIS), Département de Biologie, Université du Laval, Québec, QC G1V 0A6, Canada

* Corresponding author : A. Martinez-Silva Maria, email address : mariaangelica.martinezsilva@uqar.ca

Abstract :

Fish growth can be modulated through genetic selection. However, it is not known whether growth regulatory mechanisms modulated by genetic selection can provide information about phenotypic growth variations among families or populations. Following a five-generation breeding program that selected for the absence of early sexual maturity and increased growth in brook charr we aimed to understand how the genetic selection process modifies the growth regulatory pathway of brook charr at the molecular level. To achieve this, we studied the regulation of growth traits at three different levels: 1) between lines—one under selection, the other not, 2) among-families expressing differences in average growth phenotypes, which we termed family performance, and 3) among individuals within families that expressed extreme growth phenotypes, which we termed slow- and fast-growing. At age 1+, individuals from four of the highest performing and four of the lowest performing families in terms of growth were sampled in both the control and selected lines. The gene expression levels of three reference and ten target genes were analyzed by real-time PCR. Results showed that better growth performance (in terms of weight and length at age) in the selected line was associated with an upregulation in the expression of genes involved in the growth hormone (GH)/insulin growth factor-1 (IGF-1) axis, including the igf-1 receptor in pituitary; the gh-1 receptor and igf-1 in liver; and ghr and igf-1r in white muscle. When looking at gene expression within families, family performance and individual phenotypes were associated with upregulations of the leptin receptor and neuropeptide Y—genes related to appetite regulation—in the slower-growing phenotypes. However, other genes related to appetite (ghrelin, somatostatin) or involved in muscle growth (myosin heavy chain, myogenin) were not differentially expressed. This study highlights how transcriptomics may improve our understanding of the roles of different key endocrine steps that regulate physiological performance. Large variations in growth still exist in the selected line, indicating that the full genetic selection potential has not been reached.

Highlights

► Selection upregulate the *gh/igf-1* axis with no effect on appetite or muscle growth. ► Phenotype differences in both lines are related to appetite regulation. ► Upregulation of *lepr* is related to individual and familial slow performance. ► Liver *igf-1*, muscle *ghr* and *igf-1r* are good indicators of growth among lines.

Keywords : Selection, Phenotype, Growth, Transcriptomics, gh/igf-1 axis, Appetite regulation

1. INTRODUCTION

Fish reproductive success in nature is determined not only by the number of offspring that an individual produces, but also by how many offspring survive to reproductive maturity (Clutton-Brock, 1988). Large males, which may be preferred by females, can dominate competitors in contests for mates or breeding territories, and large females can produce more and larger offspring than small ones (Perry *et al.*, 2005; Anderson *et al.*, 2010). Aquaculture production aims to produce large fish that invest in growth instead of reproduction and that best adapt to the captive environment (Gjedrem, 2005; Sauvage *et al.*, 2010; Bastien *et al.*, 2011). Selective breeding exploits the substantial genetic variation that is present for desirable traits. Thus, a high growth rate as well as the absence of early sexual maturity are the most used criteria since energy is preferentially invested in growth rather than in gamete production (e.g., Nilsson, 1990; Bastien *et al.*, 2011).

Growth in teleosts is controlled at the endocrine level, mainly by the growth hormone (GH) / insulin factor 1 (IGF-1) axis (Björnsson, 1997; Wood *et al.*, 2005; Duan *et al.*, 2010; Vélez *et al.*, 2017). GH, which is synthesized by the pituitary gland, regulates many functions, including somatic growth, energy metabolism, reproduction, digestion, osmoregulation, and immune function (Kawaguchi *et al.*, 2013). The release and synthesis of GH in the brain and peripheral tissues are i) stimulated by neuroendocrine factors, such as neuropeptide Y (NPY) (Aldegunde and Mancebo, 2006) and ghrelin (GRL) (Rønnestad, *et al.*, 2017; Perelló-Amorós *et al.*, 2018), and ii) inhibited by somatostatin (SRIF, mainly synthesized in the brain) (Nelson and Sheridan, 2005; Very and Sheridan, 2007; Sheridan and Hagemester, 2010; Volkoff *et al.*, 2010). GH stimulates the production of liver IGF-1 (Volkoff *et al.*, 2010), so its physiological effects are

usually indirect, via IGF-1 actions. Appetite regulation is another key process controlling growth and is regulated by hormones also acting as appetite stimulators (i.e., orexigenic factors NPY and GRL) (Breton *et al.*, 1989; Cerdá-Reverter and Larhammar, 2000; Rønnestad, *et al.*, 2017) or appetite inhibitors (i.e., anorectic factors: leptin LEP) (Hoskins and Volkoff, 2012; Dar *et al.*, 2018). The continued production of muscle fibres is another important process that controls fish growth (Ahammad *et al.*, 2015). Teleosts are unique among vertebrates because of their continued growth due to the continuous production of muscle fibres from birth to death (Ahammad *et al.*, 2015). Some key myofibrillar proteins such as myosin, actin, tropomyosin, and troponin are specifically expressed in muscle tissue and are involved in its contraction (Skaara and Regenstein, 1990; Zhang *et al.*, 2011). Other myogenic factors involved in tissue differentiation and maturation processes, such as myosin heavy-chain (MHC) and myogenic regulatory factor (MRF4), are key for understanding growth-regulating mechanisms (Vélez *et al.*, 2016).

Few studies have focused on how the selection process affects growth regulation in brook charr *Salvelinus fontinalis*. Savage *et al.* (2010) reported that selective breeding led to a 4.16% difference in expressed genes between the control and domesticated lines at the juvenile stage. In particular, they observed that genes involved in growth pathways (e.g., transforming growth factor b and T complex protein 1) were generally more highly expressed in the selected line than in the control line. Studies in other salmonids, such *Oncorhynchus kisutch* and *O. mykiss*, evaluated the effects of domestication on growth (Devlin *et al.*, 2009; Tymchuk *et al.*, 2009) and the relationship between genomics and selection in aquaculture based on the study of divergence and genome size (Hessen *et al.*, 2010; Pankova *et al.*, 2017). However, no one has looked at the

growth regulation pathways occurring in different brook charr tissues, and that is the objective of the study presented here.

Selective breeding is particularly well-developed for brook charr, for which several studies have been carried out with both anadromous (seawater migratory) and resident fish (Laval strain, Québec). Perry *et al.* (2004) showed that higher fertility was associated with higher mean fry length, suggesting that stabilizing selection for juvenile length occurred prior to yolk sac resorption. Furthermore, parental-based genetic variance for early size traits appears to be partially segregated at the embryo–fry boundary, with maternal genetic variance being high prior to yolk-sac resorption and relatively low thereafter (Perry *et al.*, 2004, 2005). Significant heritability for traits related to the accumulation and use of energy reserves was found in two out of three different strains used by the Québec fish-farming industry, which include the Laval strain (Crespel *et al.*, 2013). Domestication has led to large increases in fish weight: for *S. fontinalis* from the same Laval strain, the weight of selected fish at age 22 months increased by 23% between the F1 and F2 generations and by 32% from F2 to F3 (Bastien *et al.*, 2011).

The main goal of this study was to understand how the genetic selection process modifies the growth regulatory pathway of brook charr at the molecular level. To achieve this, we studied the regulation of growth traits at three different levels: 1) between lines—one under selection, the other not, 2) among-families expressing differences in average growth phenotypes, which we termed family performance, and 3) among individuals within families that expressed extreme growth phenotypes, which we termed slow- and fast-growing. We tested the hypothesis that selection enhanced the differential expressions of genes involved in the GH/IGF-1 axis and in appetite control as well as in muscle growth between slow- and fast-growing phenotypes and family performance. We also aimed at identifying molecular indicators that could be

implemented in a selection program to enhance sustainable production for brook charr aquaculture.

2. METHODOLOGY

2.1. Selection process

A selective breeding program described by Bastien *et al.* (2011) and Sauvage *et al.* (2010) was initiated in 1994 using wild *S. fontinalis* from the Laval River (Québec; 48.449° N, 68.059° W). Briefly, a combined between- and within-family selection protocol was applied based on 1) the absence of precocious sexual maturation at 22 months and 2) growth performance in sexually immature fish. A control line was created by the arbitrary selection of equal numbers of fish from each family for every generation (i.e., domestication to culture conditions, but no intentional selection) (Bastien *et al.* 2011). This line was maintained over the same period, which allowed us to perform studies aimed at tracking temporal genetic and phenotypic changes occurring in selected vs. control lines reared in the exact same environment. It is important to note that this control group—even if it was not selected by the criteria of growth and absence of maturity—can be considered as domesticated across generations (non-directed selection). Fish were healthy throughout this study, and we encountered no problems in maintaining all families and lines.

2.2. Rearing conditions

Fertilized eggs were incubated in darkness. Each family was incubated separately in individual trays with screened bottoms that allowed the upwelling of water through the egg layers during incubation and the inflow from the upstream side during fry rearing. Water temperature

followed the natural winter decrease but was not allowed to drop below 4°C. At hatching, temperature was gradually increased by 1°C per week to reach 8°C, providing optimal conditions for first feeding. At the beginning of June, when natural water conditions reached 8°C, no further temperature adjustments were made, and fish were reared under natural temperature and photoperiod conditions in flow-through dechlorinated fresh water in our wet lab facilities (maximal temperature: 15°C in September; minimal temperature 3°C in February). Each family was maintained in its individual tray until fish reached a size that allowed family identification by fin clippings (eight possible marks combining adipose, right and left pelvic fins). Families (control and selected combined) with different markings were randomly pooled in five 250 L rearing tanks and 4 months later in five 500 L tanks. Fish from six families were placed in each 250 L tank (400 individuals per family, 2400 ind. tank⁻¹, mean charge of 9.2 kg m⁻³), and then in 500 L tanks (200 ind. per family; 1200 ind. tank⁻¹, mean charge of 10.8 kg m⁻³).

Fish were fed commercial pellets eight times per day at the beginning of exogenous feeding (March) with a gradual decrease to reach one meal per day by November. We calculated rations (based on fish size and prevailing temperature conditions) so that the food supplied was overestimated (commercial charts were designed for rainbow trout) and to avoid having an excess of unfed food that would decrease water quality. We stopped supplying pellets when fish stopped eating, thus satiety was ensured. Fish were hand fed each morning except in winter (December to end of March), when they were fed twice a week. Fish were weighed at regular intervals and fin markings were verified. With this information, feeding rations were modified and care was taken not to exceed a rearing load greater than 30 kg m⁻³. Fish numbers were reduced when this was the case, with no attempt to keep the highest-performing fish, and family pools in the different tanks were randomly modified except to avoid having similar family fin marks in the same tank.

2.3. Sampling

We used the progeny of 13 families from the selection line and 16 families from the control lines, both from the F5 generation (n = 4471 individuals: 2078 selected and 2393 control). Individuals from the four families with the largest mean weight (high-performing families) and the four families with the lowest mean weight (low-performing families) were sampled in both the control and selected lines (Table 1, Fig. 1). Fish from each family were weighed (± 0.1 g) and measured (± 0.1 cm) in July at the age of 7 months, in November at 11 months, and in June at 18 months (1+) (Suppl. Fig. 1); the phenotypes at 18 months of age were used to rank individuals and families for this study. Fish were not fed for 24 h and then were anaesthetized (3-aminobenzoic acid ethyl ester, 0.16 g L^{-1}) prior to measurements (length and weight). Fulton's condition factor (K) (Fulton, 1904) was calculated as

$$K = (W L^{-3}) * 100$$

where W is the weight in g and L is the fork length in cm.

For each family (Table 1), the eight heaviest (fast-growing individuals) and the eight lightest (slow-growing individuals) juveniles were sacrificed by severing the spinal cord and used for further molecular analyses (Table 2, Fig. 1). The pituitary gland, brain, liver, and white muscle were immediately removed and placed in sterile tubes, frozen in liquid nitrogen, and stored at -80°C pending analyses.

2.4. Total RNA and cDNA synthesis

For each fish, liver and brain total RNA were extracted from 30 mg wet weight of tissue. For pituitary RNA extraction, a pool of eight individuals from a same group was used because of the gland's small size (Fig. 1), which prevented analysis at the individual level. RNA extractions were performed using the RNeasy Plus Universal Mini Kit (liver, pituitary, and brain; Qiagen, Inc., Mississauga, ON, Canada) and RNeasy Fibrous Tissue Kit (muscle; Qiagen, Inc., Mississauga, ON, Canada). Extracted RNA was diluted to a final concentration of 200 ng μL^{-1} . RNA purity, quality, and concentration were measured by SYBR Safe DNA Gel Stain 2% agarose gel electrophoresis (Alpha Imager HP System, Alpha-Innotech, Alpha Software, Invitrogen, Inc., CA, USA) with an absorbance ratio of 260/280 (NanoVue Plus spectrophotometer, GE Healthcare, Pittsburgh, PA, USA). Reverse transcription of mRNA into complementary DNA (cDNA) was performed in duplicate for each sample and then pooled using the Quantitect Reverse Transcription Kit (Qiagen, Inc., Mississauga, ON, Canada). cDNA was diluted to a final concentration of 200 ng μL^{-1} , separated into aliquots, and kept frozen at -20°C until further analysis. cDNA integrity and concentrations (1.8–2.0) were verified using a NanoVue Plus spectrophotometer. The efficiency of reverse transcription was verified by quantitative polymerase chain reaction (qPCR) using serial dilutions of a representative pool of cDNA samples collected from different sampling sites and compared to the ideal slope of -3.3.

2.5. Primer design for target genes

To evaluate the impact of selection on the growth regulation pathway, the expressions of the genes present in different tissues were quantified in each sampled fish (except for the pituitary gland for which we used family pools). These different tissues included brain (target genes *npv*,

lep-r), pituitary (target genes *gh*, *ghr-1*, *igf-1r*, *grl*, *srifr*), liver (target genes *igf-1*, *ghr-1*), and muscle (target genes *igf1r*, *ghr-1*, *mhc*, *myog*).

The first step was to obtain the DNA sequences for *S. fontinalis* since sequences were not available for this species. We designed primers from Arctic charr *Salvelinus alpinus* and rainbow trout *Oncorhynchus mykiss* sequences (Table 3) to perform PCR and amplify products of interest in *S. fontinalis*. PCR was performed in 25 μ L reactions containing 12.5 μ L of AmpliTaq Gold 360 (Applied Biosystems), 0.5 μ L of 360 GC enhancer (Applied Biosystems), 2.5 μ L of cDNA, 1.25 μ L each of forward and reverse primer (20 mM), and 7 μ L of nuclease-free H₂O. Reactions were amplified under a thermal profile of 95°C for 10 min, 40 cycles at 95°C for 30 s, 60°C for 30 s, and 72°C for 1 min and 20 s, followed by 7 min at 72°C. PCR products were then tested by gel electrophoresis on 2% agarose gels. The amplified PCR products were purified using the QIAquick PCR purification kit (Qiagen) and then forward and reverse sequences using the BigDye Terminator v3.1 Cycle Sequencing kit (Applied Biosystems) with the ABI PRISM 3130 Genetic Analyzer (Applied Biosystems). For each gene, the sequence obtained was compared with the sequence used for primer design with the BLAST® software (Altschul *et al.*, 1990). Sequence lengths and percentages of similarity to the reference sequences are presented in Table 3.

2.6. Measurement of gene expression by qPCR

Gene expression was measured by qPCR using the TaqMan technology, which involved designing primers and probes specific to brook charr based on the gene sequences obtained in the step described above. For pituitary analyses, IDT PrimeTime probes (Table 4) were designed using the PrimerQuest tool (Integrated DNA Technologies, Coralville, IA, USA). For brain, liver, and muscle, TaqMan probes (Table 5) were designed using the Primer Express software version

3.0 (Applied Biosystems). For all samples, qPCR gene expression was performed in triplicate using a QuantStudio 3 Real Time PCR System (Applied Biosystems). Each reaction consisted of 2 μ L of diluted cDNA, 5 μ L of TaqMan Fast Advanced Mix, 0.5 μ L of Custom TaqMan Gene Expression Assay, and 2.5 μ L of sterile water, for a total volume of 10 μ L.

The thermal cycling of qPCR was done in two steps: (1) 2 min at 50°C for optimal AmpErase uracil-N-glycosylase activity followed by 20 s at 95°C to activate DNA polymerase, and (2) 45 denaturation cycles for 1 s at 95°C and annealing / extension for 20 s at 60°C. Cycle thresholds (CT) were obtained with the QuantStudio Design Analysis software (ThermoFisher Connect). The relative quantification of gene expression was calculated using the $2^{-\Delta\Delta C_T}$ method of Livak and Schmittgen (2001), with C_T being a threshold cycle:

$$2^{-\Delta\Delta C_T} = 2^{-(\Delta C_{Te} - \Delta C_{Tc})}$$

where $C_{Te} = C_T$ of the candidate gene - C_T of the reference genes for sample x, and $C_{Tc} = C_T$ of the target gene - C_T of the reference genes for the calibrator.

In this study, the calibrator was the CLS group (control line + low-performing families + slow-growing phenotype). The stability of reference gene expressions between groups was verified with Expression Suite version 1.0, where the score was calculated according to Vandesompele *et al.* (2002). The reference genes were *18s*, *β -actin*, and *efl α* , and the best score combination obtained with the QuantStudio Analysis software was kept for each tissue. For accurate averaging of the control genes, we used the geometric mean instead of the arithmetic

mean because the former better controls for possible outlier values and abundance differences between the different genes (Vandesompele *et al.*, 2002).

2.7. Statistical analyses

2.7.1 Length, weight, and condition

One-way ANOVAs ($\alpha < 0.05$) were used to compare family lengths, weights, and Fulton condition factors within lines. This allowed us to compare growth performance among families and to select those families used for gene expression as well as the slow- and fast- growing individuals within each family. Data normality was verified using the Kolmogorov-Smirnov test and homoscedasticity was tested using the Levene test (Statistica, version 6.1.478, Statsoft). When ANOVA revealed significant differences between groups, we used post-hoc HSD Tukey tests if homoscedasticity was verified and multiple-range Games-Howell tests if there was heteroscedasticity.

2.7.2 Gene expression

Data outliers for *grl* (n = 1), *srifr* (n = 2), pituitary *ghr-1* (n = 1), white muscle *myog* (n = 1), and weight (n = 1) were removed before running analyses. For gene expression in all tissues except pituitary, n was the number of individuals (six individuals per family; Fig. 1A). In the pituitary, the statistical n was the number of families per line and not the number of individuals. Because we had to pool individuals to obtain enough biological material (eight individuals per family; Fig. 1B), no family effect was assessed. Prior to analyses, the following data transformations were applied to achieved normality: log transformations for pituitary *grl* and *srifr* and liver *ghr-1*; Box-Cox transformations for pituitary *igf-1r* and *ghr-1*, brain *npv* and *lepr*, liver

igf-1, and white muscle *igf-1r*, *ghr-1*, and *mhc*. For each selected gene in the pituitary, separate linear mixed models (LMM) or linear models (LM) were built that related gene expression to length, condition (Fulton index), and line (control or selected) (R version 4.0.5 package lme4). Family identity was first included in all non-pituitary models as a random effect. Models were simplified by a backward elimination procedure, where the least significant term (based on *P*-value) was sequentially removed until all remaining variables were significant (*i.e.*, $P < 0.05$, confirmed by a Likelihood Ratio Test). Body weight was not included in the models due to its strong positive correlation with length ($R = 0.937$). Marginal and conditional R-squared values were obtained using the rsquared function from the piecewiseSEM R package (Lefcheck, 2016).

Gene expressions were compared using two-way nested ANOVAs (factors: line and family; individual performance nested in “family”). Normality and homoscedasticity were tested and a posteriori tests were run as previously described. Finally, the relationships between growth variables (weight, length, and condition) were analyzed using simple linear regressions.

3. RESULTS

3.1. Weight, length, and condition differences between control and selected lines

On average, fish from the selected line were 37.21% heavier than fish from the control line ($11.95 \text{ g} \pm 4.57$ vs $8.71 \text{ g} \pm 3.36$; $F_{(1,4470)} = 740.42$; $p < 0.001$; Fig. 2A and 2B). Their length ($10.76 \text{ cm} \pm 1.38$) was also 11.54% greater than the control line ($9.65 \text{ cm} \pm 1.26$; $F_{(1,4470)} = 793.96$; $p < 0.001$; Fig. 2C and 2D). However, the condition factor of control line fish was

significantly (albeit only slightly) higher than that of the selected line (0.93 ± 0.14 vs 0.92 ± 0.12 ; $F_{(1,4470)} = 6.98$; $p = 0.0083$; Fig. 2E and 2F).

3.2. Weight, length, and condition differences among families

Even though the selection process lasted five generations, family effects were still very present in both the selected and control lines. In the selected line, weights of the best- and the least-performing families differed by 49.42% ($F_{(12,2077)} = 35.79$; $p < 0.001$) while they differed by 14.82% in the control line ($F_{(15,2392)} = 32.76$; $p < 0.001$). It is noteworthy that the family with the lowest weight in the selected line was significantly different from the rest of the selected families, but not significantly different from those control line families that had average and low performance (Fig. 2A and 2B). This same family effect was also observed for length in the selected line: the largest family was significantly bigger—by 7.63%—than the smallest family ($F_{(12,2077)} = 24.96$; $p < 0.001$), and this was even more evident in the control line, where the difference was 14.62% ($F_{(15,2392)} = 35.34$; $p < 0.001$; Fig. 2C and 2D).

Weight and length were significantly positively correlated in the selected line ($F_{(1,2076)} = 12814.51$; $p < 0.001$; Length = $0.28 * \text{Weight} + 7.32$; $R = 0.927$) as well as in the control line ($F_{(1,2392)} = 16228.92$; $p < 0.001$; Length = $0.3493 * \text{Weight} + 6.60$; $R = 0.933$). However, significant albeit very slight correlations were found between condition factor and weight ($F_{(1,4469)} = 15.03$; $p < 0.001$, $R = 0.057$) and between condition and length ($F_{(1,4469)} = 238.36$; $p < 0.001$, $R = 0.225$).

3.3. Gene expression

3.3.1. Selection and family performance–based effects on gene expression

In the brain, *npv* and *lepr* gene expressions were not different between lines (Table 6), but *lepr* expression was significantly higher in low-performing families ($F_{(1,44)} = 6.85$; $p = 0.012$); no family effect was found in *npv* (Table 6). The expression of these two genes was not linked to length or condition (Table 6). Pituitary *grl*, *srifr*, *gh*, and *ghr-1* gene expressions were not different between lines (Table 6). The expression of these genes was not significantly linked to length or condition (Table 6). While pituitary *igf-1r* gene expression was not different between lines ($p = 0.80$), it was significantly positively linked to length (Table 6).

In liver, *ghr-1* and *igf-1* gene expressions were significantly higher in the selected line compared to the control line (Table 6, Fig. 3A and 3C), but no family effect was found (Table 6). Expression of the *ghr-1* gene was negatively impacted by condition but not by length (Table 6, Fig. 3B). On the contrary, *igf-1* gene expression was positively associated with length but not with condition (Table 6, Fig. 3D). In white muscle, the relative expressions of *mhc*, *ghr-1*, and *myog* were not significantly different between lines (Table 6), while *igf-1r* gene expression was significantly higher in the selected line (Table 6, Fig. 3E). *Mhc*, *ghr-1*, and *igf-1r* gene expressions were not different among families, but we found a significant family effect in *myog* gene expression (Table 6). Nevertheless, the complementary ANOVA analysis did not show significant differences among families with low and high performance ($F = 2.8$, $p = 0.09$). Relative expressions of *mhc*, *myog*, and *igf-1r* were not impacted by length (Table 6), but *ghr-1* expression significantly increased with length (Table 6, Fig. 3F). None of the genes quantified in white muscle (*mhc*, *ghr-1*, *myog*, *igf-1r*) were linked to condition (Table 6).

3.3.2. Individual performance-based effects

Phenotypes were compared between low- and high-performing families; selected and control families were combined since no significant line effect was found (Suppl. Table 1). Brain *npy* and *lepr* gene expressions were higher in slow-growing individuals than in fast-growing individuals from both low- and high-performing families (respectively $F_{(1,91)} = 5.26$; $p = 0.02$; $F_{(1,91)} = 6.70$; $p < 0.001$) (Fig. 4A and 4B).

In liver, the relative expression of *ghr-1* showed no line \times family interactions ($F_{(1,91)} = 0.20$; $p = 0.64$), but it differed according to both family and individual performances. The *ghr-1* expression was higher in fast-growing juveniles from high-performing families ($F_{(2,91)} = 24.31$; $p < 0.001$), but no difference was observed in low-performing families ($F_{(2,91)} = 1.37$; $p = 0.24$) (Fig. 4C). The same nested effect was observed for liver *igf-1*, with no line \times family interactions ($F_{(1,91)} = 0.87$; $p = 0.35$), a higher expression in the fast-growing juveniles in high-performing families ($F_{(2,91)} = 15.75$; $p < 0.001$), and no differences in low-performing families ($F_{(2,91)} = 2.17$; $p = 0.14$) (Fig. 4D).

In muscle, *ghr-1* expression showed no line \times family interactions ($F_{(1,91)} = 0.33$; $p = 0.56$). A nested effect was observed, with higher expression in the fast-growing juveniles from families with both low and high performance ($F_{(1,91)} = 4.23$; $p = 0.01$) (Fig. 4E). No nested effect or interactions were observed in the relative expression of *igf-1r* ($F_{(1,91)} = 2.6$; $p = 0.07$), *mhc* ($F_{(1,91)} = 2.42$; $p = 0.09$), or *myog* ($F_{(1,91)} = 0.01$; $p = 0.98$).

4. DISCUSSION

In this study, we tested the hypothesis that selection enhanced the differential expression of genes involved in the GH/IGF-1 axis, in appetite control, and in muscle growth between fish with slow- and fast-growing phenotypes and between families with different growth performance. When comparing the selected and control lines, we predicted differences on endocrine traits, and when comparing family and individual traits, we predicted differences resulting from physiological and endocrine traits. As expected, fish from the selected line were heavier and larger than those from the control line. However, our results did not support our main hypothesis—that selection enhanced differential expressions of the examined target genes involved in the GH/IGF-1 axis between slow- and fast-growing phenotypes. Indeed, growth performance in the selected line was associated with a higher relative expression of liver *igf-1* and muscle *igf1-r*, but not with genes controlling appetite or muscle growth. However, some genes related to appetite control or muscle growth were linked to family performance and individual phenotypes, raising interesting questions about factors underlying non-selection-based phenotypic variations.

4.1. Selection-based effects on gene expression

Our results showed an upregulation of the GH/IGF-1 axis, starting with pituitary *igf-1r* and followed by liver *ghr-1*, liver *igf-1*, muscle *ghr-1*, and muscle *igf-1r* in the selected line, clearly indicating an effect of selection on this axis (Fig. 5). The only gene we examined on this axis that was not upregulated in the selected line was pituitary *gh*. While this may be explained by the limited statistical power for the analysis of pituitary gene expression considering that

samples were pooled in the analysis, we nevertheless consider this unlikely because differences in pituitary *igf-1r* were detected.

In other fast-growing salmonids that had followed a simple selection process based only on mass, the upregulation of liver *igf-1* and muscle *igf-1r* combined with positive growth correlation is well known (Fleming *et al.*, 2002; Devlin *et al.*, 2009; Tymchuk *et al.*, 2009). It appears that selection based on growth and the absence of early sexual maturation in brook charr also enhanced weight gain via upregulation of the *gh/igf-1* axis. It is noteworthy that the upregulation of liver *ghr-1* promotes the synthesis of *igf-1* in the liver. Indeed, mRNA levels of *igf-1*, *igf-1r*, and *gh* had already been identified as genes of interest for promoting growth in the same strain of *S. fontinalis* (Sauvage *et al.*, 2012). Such upregulation was shown to enhance lipid catabolism to obtain energy for growth in Atlantic salmon *Salmo salar* (Hevrøy *et al.*, 2015), which could explain the improved condition factor in the selected line. Even though the selection process did not modify the expression of pituitary *srifr*, this does not mean that a reduction in the production of SRIF, an inhibitor of growth hormone synthesis, could not be occurring. It should be noted that the effects of SRIF on *gh* expression are limited and conflicting (Wang *et al.*, 2016).

We showed that 1+ *S. fontinalis* juveniles reared under the same conditions, including temperature and food rations, displayed a differential modulation of the *gh/igf-1* axis, which may have been enhanced by the selection process itself and not modulated by the influence of rearing variables such as stress (Meier *et al.*, 2009; Nakano *et al.*, 2013), feeding, or fasting (Chauvigné *et al.*, 2003; Fukada *et al.*, 2004; Norbeck *et al.*, 2007; Bower *et al.*, 2008; Walock *et al.*, 2012), diet composition (Gomez-Requeni *et al.*, 2005; Hack *et al.*, 2018), or temperature (Hevrøy *et al.*, 2013), as previously documented in other salmonids. It is important to note that temperature is one of the most dominant factors influencing key biological functions in fish—including food

ingestion—that decrease at higher or lower temperatures (Assan et al., 2021). Winter temperature did not slow growth (Suppl. Fig. 2), and even though specific family growth rate (SGR) was generally lower from 7 to 11 months of age (July to November) than from 11 to 18 months (November to June), rankings remained roughly the same and confirmed that phenotype differences were consistent between lines through time and representative of the phenotypes measured in 18-month-old fish.

We expected to find a difference in appetite control ($r_{p, \rho}$ in particular), but found no difference in relative gene expression between control and selected lines. Yet, it was previously reported that selection had an impact on food intake in Atlantic salmon, promoting faster growth and also improving the efficient utilization of proteins and energy (Gjedrem and Baranski, 2009). Again, we did not find any differences in the relative expression of muscle *mhc* and *myog* between lines. However, the absence of gene expression may not necessarily mean an absence of protein activity. It should also be noted that these two genes are only involved in the final stages of myocyte development (differentiation and maturation) (Evans *et al.*, 2014). Differences could have been present in the expression of muscle genes involved in the first stage of activation, such as nuclear antigen in proliferating cells (*pcna*) or in cell proliferation with the expression of different transcription factors, such as *Sox8*, *Myf5*, *MyoD2*, and *Pax7* (Vélez *et al.*, 2017), which activate intracellular transduction cascades via *igf-1* receptors (Dupont and LeRoith, 2001; Hack *et al.*, 2018).

4.2. Family performance–based effects on gene expression

Contrary to what we observed between selected and control lines, family performance was related to the expressions of both *lepr* and *myog* for both the selection and control lines.

Relative *lepr* expression was upregulated in low-performing families, suggesting suppressed food intake and increased metabolism, resulting in increased energy expenditure and weight loss (Klok *et al.*, 2007; Volkoff, 2016; Blanco and Soengas, 2021). In contrast, high-performing families did not show any difference in *lepr* expression but rather an upregulation of muscle *ghr* that could enhance growth; this has been widely demonstrated in several teleosts (Picha *et al.*, 2008; Hevrøy *et al.*, 2013, 2015; Vélez *et al.*, 2017).

4.3. Individual performance-based effects

In slow-growing juveniles, differences in appetite regulation may be due to *lepr* upregulation (Fig. 6) since the binding of leptin to *lepr* activates the Jak/STAT intracellular signaling pathways, which decreases food intake by down regulating other neuropeptides such as NPY (Blanco and Soengas, 2021; Volkoff *et al.*, 2003). Conversely, the expression of *npy* was also upregulated in slow-growing fish, although the exact mechanism of action triggered after leptin binding to *lepr* is unknown in teleost fish (Blanco and Soengas, 2021). The relative weight of these two mechanisms on appetite regulation cannot be assessed without food intake experiments, which should certainly be a focus in further studies. Also, we cannot refute the possibility of differences in appetite or food consumption that may have occurred among individuals or families throughout the experiment. Nevertheless, we are confident that maintaining an equal load in each rearing tank, feeding to satiation, and grouping the families differently at regular intervals helped to maintain dominance and family hierarchy at the lowest possible levels. Despite these precautions, and as in any similar studies of this type on salmonids, we cannot rule out that size variation could partly be the result of aggressive interactions, with some fish not feeding maximally, which would result in reduced growth rates.

We found no indication of differences related to muscle growth regulation. In future studies, it would be relevant to look for differences in the PI3/Akt/TOR pathway (the central mediator in the nutrient sensing protein pathway and precursor of many myogenic factors), which is only activated by feeding. Upregulation of this pathway was recently reported in fast-growing *O. mykiss* (Cleveland *et al.*, 2020). Modifications in the trajectory of growth antagonist genes (e.g., precursors to the alpha subunits of Meprin A) (Valente *et al.*, 2013; Evans *et al.*, 2014), which were strongly expressed in the Laval control line in brook charr (Sauvage *et al.*, 2010), should also be assessed.

4.4. Impact of selection on general growth across generations

In the first generations following initiation of the selective breeding programs with wild breeders brought into captivity, Bastien *et al.* (2011) found that mean weight in the selected line increased by 23.1% after the first generation, by 32.1% after the second, and by 4% after the third. In our study, the combined selection showed that fish from the fifth generation of the selected line showed a weight gain of 37.2% compared to those from the control line. In other salmonids, it is known that genetic improvements produce permanent gains (Gjedrem and Baranski, 2009). Our results are consistent with those of previous studies, such as Kause *et al.* (2005), who showed that combined selection improved *O. mykiss* growth by 7% per generation over two generations, and Gjerde and Korsvoll (1999) reported that Atlantic salmon after six generations showed improvements in growth rate of 83.9% overall (14% per generation) and a 12.5% reduction in the frequency of early sexual maturity.

Surprisingly, the condition factor in brook charr juveniles was lower in the selected line than in the control line due to variable gains in weight and length in the selected line. This could

be explained by different regulations in the mechanisms related to energy reserves, as has been mentioned for *igf-1* and lipid catabolism. A strongly significant positive correlation between condition factor and total lipid content in Atlantic salmon suggests that condition factor can be used to indicate the state of energy reserves rather than as an indicator of growth (Herbinger and Friars, 1991; Sutton *et al.*, 2000).

5. CONCLUSIONS

Selection for the absence of early maturation combined with selection for high growth rate resulted in an upregulation of the *gh/igf-1* axis with no effect on the expression of genes related to appetite control or muscle growth. In contrast, phenotype differences in both the selected and control lines within families resulted in different expressions of genes related to appetite regulation. Slow-growing fish were characterized by an upregulation of brain *lepr* and a downregulation of the *gh/igf-1* axis. Overall, our results show that *lepr* could be used as a physiological indicator of growth related to phenotypic variation and family performance. Liver *igf-1* as well as muscle *ghr* and *igf-1r* gene expressions could be considered as indicators of good growth among brook charr lines. The role of the receptors, which can only be studied with the transcriptomic approach, should be included in future studies because of their importance in the growth regulation pathway. Further research is needed to investigate which genes involved in muscle growth could be stimulated through *gh/igf-1* axis upregulation. By identifying the molecular mechanisms by which *gh/igf-1* signaling is modulated at the endocrine level (paracrine and autocrine), we should be able to better understand growth patterns that optimize growth strategies in commercial fish production. Finally, large weight and length variations still exist in

the selected line, indicating that the full genetic selection potential had not been reached after five generations.

6. ACKNOWLEDGEMENTS

We are grateful to all colleagues who provided technical and scientific assistance in the laboratory. Special thanks to Renée Gagné (Institut des sciences de la mer de Rimouski) who contributed to laboratory training, and Geneviève Parent, Éric Parent, and Grégoire Cortial (Fisheries and Oceans Canada), who helped with sequencing. We also thank the journal editor M.A. Sheridan and two anonymous reviewers for their constructive input on a previous version of this manuscript. This research was supported by the Conseil de Recherche en Sciences Naturelles et en Génie du Canada (CRSNG, subvention à la découverte N° RGPIN-2019-05739) and by the *Ressources Aquatiques Québec* research network.

7. REFERENCES

- Ahammad, A.K.S., Asa'uuzzaman, M., Asakawa, S., Watabe, S., and Kinoshita, S., 2015. Regulation of gene expression mediating indeterminate muscle growth in teleosts. *Mech. Dev.* 137, 53–65.
- Aldegunde, M., and Mancebo, M., 2006. Effects of neuropeptide Y on food intake and brain biogenic amines in the rainbow trout (*Oncorhynchus mykiss*). *Peptides.* 27, 719–727.
- Altschul, S.F., Gish, W., Miller, W., Myers, E.W., and Lipman, D.J., 1990. Basic local alignment search tool. *J. Mol. Biol.* 215, 403–410.
- Anderson, J.H., Faulds, P.L., Atlas, W.I., Pess, G.R., and Quinn, T.P., 2010. Selection on breeding date and body size in colonizing coho salmon, *Oncorhynchus kisutch*. *Mol. Ecol.* 19, 2562–2573.

- Assan D., Huang Y., Mustapha, U.F., Addah, M.N., Li, G., and Chen, H. 2021. Fish feed intake, feeding behavior, and the physiological response of apelin to fasting and refeeding. *Front. Endocrinol.* 12, 1–12.
- Bastien, A., Perry, G.M.L., Savaria, J., Bernatchez, L., and Audet, C., 2011. Genetic gain for growth and delayed sexual maturation using a feral strain of anadromous brook trout. *N. Am. J. Aquac.* 73, 24–33.
- Björnsson, B.T., 1997. The biology of salmon growth hormone: from daylight to dominance. *Fish Physiol. Biochem.* 17, 9–24.
- Blanco, A.M., and Soengas, J.L., 2021. Leptin signalling in teleost fish with emphasis in food intake regulation. *Mol. Cell. Endocrinol.* 526, 111209.
- Bower, N.I., Li, X., Taylor, R., and Johnston, I.A., 2008. Switching to fast growth: the insulin-like growth factor (IGF) system in skeletal muscle of Atlantic salmon. *J. Exp. Biol.* 211, 3859–3870.
- Breton, B., Mikolajczyk, T., Danger, J., Gonnel, B., Saint-Pierre, S., and Vaudry, H., 1989. Neuropeptide Y (NPY) modulates in vitro gonadotropin release from rainbow trout pituitary glands. *Fish Physiol. Biochem.* 11, 77–83.
- Cerdá-Reverter, J.M., and Larhammar, D., 2000. Neuropeptide Y family of peptides: Structure, anatomical expression, function, and molecular evolution. *Biochem. Cell Biol.* 78, 371–392.
- Chauvigné, F., Gabillard, J.C., Weil, C., and Rescan, P.Y., 2003. Effect of refeeding on IGFI, IGFII, IGF receptors, FGF2, FGF6, and myostatin mRNA expression in rainbow trout myotomal muscle. *Gen. Comp. Endocrinol.* 132, 209–215.
- Cleveland, B.M., Gao, G., and Leeds, T.D., 2020. Transcriptomic response to selective breeding for fast growth in rainbow trout (*Oncorhynchus mykiss*). *Mar. Biotechnol.* 22, 539–550.
- Clutton-Brock, T.H., 1988. Reproductive success: studies of individual variation in contrasting breeding systems. University of Chicago Press, Chicago.
- Crespel, A., Bernatchez, L., Garant, D., and Audet, C., 2013. Genetically based population divergence in overwintering energy mobilization in brook charr (*Salvelinus fontinalis*). *Genetica.* 141, 51–64.
- Dar, S.A., Srivastava, P.P., Varghese, T., Gupta, S., Gireesh-Babu, P., and Krishna, G., 2018. Effects of starvation and refeeding on expression of ghrelin and leptin gene with variations in metabolic parameters in *Labeo rohita* fingerlings. *Aquaculture.* 484, 219–227.

- Devlin, R.H., Sakhrani, D., Tymchuk, W.E., Rise, M.L., and Goh, B., 2009. Domestication and growth hormone transgenesis cause similar changes in gene expression in coho salmon (*Oncorhynchus kisutch*). *Proc. Natl. Acad. Sci. USA.* 106, 3047–3052.
- Duan, C., Ren, H., and Gao, S., 2010. Insulin-like growth factors (IGFs), IGF receptors, and IGF-binding proteins: Roles in skeletal muscle growth and differentiation. *Gen. Comp. Endocrinol.* 167, 344–351.
- Dupont, J., and LeRoith, D., 2001. Insulin and insulin-like growth factor I receptors: similarities and differences in signal transduction. *Horm. Res.* 55, 22–26.
- Evans, D.H., Claiborne, J.B., and Currie, S., 2014. *The physiology of fishes.* CRC Press, Boca Raton, FL. 480 p.
- Fleming, I.A., Agustsson, T., Finstad, B., Johnsson, J.I., and Björnsson, B.T., 2002. Effects of domestication on growth physiology and endocrinology of Atlantic salmon (*Salmo salar*). *Can. J. Fish. Aquat. Sci.* 59, 1323–1330.
- Fukada, H., Ozaki, Y., Pierce, A.L., Adachi, S., Yamauchi, K., Hara, A., Swanson, P., 2004. Salmon growth hormone receptor: molecular cloning, ligand specificity, and response to fasting. *Gen. Comp. Endocrinol.* 139, 61–71.
- Fulton, T.W., 1904. The rate of growth of fishes. 22nd Ann. Rep. Fish. Board Scotl. 3, 141–241.
- Gjedrem, T., 2005. *Selection and breeding programs in aquaculture.* Springer, Dordrecht. 364 p.
- Gjedrem, T., and Baranski, M., 2009. *Selection breeding in aquaculture: An introduction.* Springer, London. 848 p.
- Gjerde, B., and Korsvoll, A., 1999. Realized selection differentials for growth rate and early sexual maturity in Atlantic salmon. *Aquac. Eur.* 27, 73–74.
- Gomez-Requeni, P., Calduch-Giner, J., Vega-Rubin de Celis, S., Médale, F., Kaushik, S.J., and Pérez-Sánchez, J., 2005. Regulation of the somatotropic axis by dietary factors in rainbow trout (*Oncorhynchus mykiss*). *Br. J. Nutr.* 94, 353–361.
- Hack, N.L., Strobel, J.S., Journey, M.L., Beckman, B.R., and Lema, S.C., 2018. Response of the insulin-like growth factor-1 (*Igf1*) system to nutritional status and growth rate variation in olive rock fish (*Sebastes serranoides*). *Comp. Biochem. Physio., Part A.* 224, 42–52.
- Herbinger, C.M., and Friars, G.W., 1991. Correlation between condition factor and total lipid content in Atlantic salmon, *Salmo salar* L. parr. *Aquacul. Fish. Manag.* 22, 527–529.
- Hessen, D.O., Jeyasingh, P.D., Neiman, M., and Weider, L.J., 2010. Genome streamlining and

- the elemental costs of growth. *Trends Ecol. Evol.* 25, 75–80.
- Hevrøy, E.M., Hunskår, C., de Gelder, S., Shimizu, M., Waagbø, R., Breck, O., and Takle, H., 2013. GH-IGF system regulation of attenuated muscle growth and lipolysis in Atlantic salmon reared at elevated sea temperatures. *J. Comp. Physiol. B: Biochem. System. Environ. Physiol.* 183, 243–259.
- Hevrøy, E.M., Tipsmark, C.K., Remø, S.C., Hansen, T., Fukuda, M., Torgersen, T., Vikeså, V., 2015. Role of the GH-IGF-1 system in Atlantic salmon and rainbow trout postsmolts at elevated water temperature. *Comp. Biochem. Physiol. A : Mol. Integr. Physiol.* 188, 127–138.
- Hoskins, L.J., and Volkoff, H., 2012. The comparative endocrinology of feeding in fish: Insights and challenges. *Gen. Comp. Endocrinol.* 176, 327–335.
- Kause, A., Ritola, O., Paananen, T., Wahloos, H., and Mäntysaari, E., 2005. Genetic trends in growth, sexual maturity and skeletal deformations, and rate of inbreeding in a breeding programme for rainbow trout (*Onchorhynchus mykiss*). *Aquaculture.* 247, 177–187.
- Kawaguchi, K., Kaneko, N., Fukuda, M., Nakano, Y., Kimura, S., Hara, A., and Shimizu, M., 2013. Responses of insulin-like growth factor (IGF)-I and two IGF-binding protein-1 subtypes to fasting and re-feeding, and their relationships with individual growth rates in yearling masu salmon (*Oncorhynchus masou*). *Comp. Biochem. Physiol. A.* 165, 191–198.
- Klok, M.D., Jakobsdottir, S., and Dent, M.L. 2007. The role of leptin and ghrelin in the regulation of food intake and body weight in humans: A review. *Obes. Rev.* 8, 21–34.
- Lefcheck, J.S., 2016. PiecewiseSEM: Piecewise structural equation modeling in R for ecology, evolution, and systematics. *Methods Ecol. Evol.* 7(5), 573–579.
- Livak, K J., and Schmittgen, T.D., 2001. Analysis of relative gene expression data using real-time quantitative PCR and the 2 ddCT. *Methods.* 25, 402–408.
- Meier, K.M., Figueiredo, M.A., Kamimura, M.T., Laurino, J., Maggioni, R., Pinto, L.S., Dellagostin, O.A., 2009. Increased growth hormone (GH), growth hormone receptor (GHR), and insulin-like growth factor I (IGF-I) gene transcription after hyperosmotic stress in the Brazilian flounder *Paralichthys orbignyanus*. *Fish Physiol. Biochem.* 35, 501–509.
- Nakano, T., Afonso, L.O.B., Beckman, B.R., Iwama, G.K., and Devlin, R.H., 2013. Acute physiological stress down-regulates mRNA expressions of growth-related genes in coho salmon. *PLoS ONE.* 8, 1–7.

- Nelson, L.E., and Sheridan, M.A., 2005. Regulation of somatostatins and their receptors in fish. *Gen. Comp. Endocrinol.* 142, 117–133.
- Nilsson, J.A.N., 1990. Heritability estimates of growth-related traits in Arctic charr (*Salvelinus alpinus*). *Aquaculture.* 84, 211–217.
- Norbeck, L.A., Kittilson, J.V.D., and Sheridan, M.A., 2007. Resolving the growth-promoting and metabolic effects of growth hormone: Differential regulation of GH – IGF-I system components. *Gen. Comp. Endocrinol.* 151, 332–341.
- Pankova, M.V., Kухлевsky, A.D., and Brykov, V.A., 2017. Fish growth hormone genes: Divergence of coding sequences in salmonid fishes. *Russ. J. Genet.* 53, 221–232.
- Perelló-Amorós, M., Vélez, E.J., Vela-Albesa, J., Sanchez-Moya A., Riera-Heredia, N., Heden, I. 2018. Ghrelin and its receptors in gilthead sea bream: nutritional regulation. *Front. Endocrinol.* 9(339), 1–14.
- Perry, G.M.L., Audet, C., Laplatte, B., and Bernatchez, L., 2004. Shifting patterns in genetic control at the embryo-alevin boundary in brook charr. *Evolution.* 58, 2002–2012.
- Perry, G.M.L., Audet, C., and Bernatchez, L., 2005. Maternal genetic effects on adaptive divergence between anadromous and resident brook charr during early life history. *J. Evol. Biol.* 18, 1348–1361.
- Picha, M.E., Turano, M.J., Beckman, B.R., and Borski, R.J. 2008. Endocrine biomarkers of growth and applications to aquaculture: A minireview of growth hormone, insulin-like growth factor (IGF -I), and IGF-binding proteins as potential growth indicators in fish. *N. Am. J. Aquac.* 70, 196–211.
- Rønnestad, I., Gomes, A.S., Murashita, K., Angotzi, R., Jönsson, E., Volkoff, H. 2017. Appetite-controlling endocrine systems in teleosts. *Front. Endocrinol.* 8, 1–24.
- Sauvage, C., Derome, N., Normandeau, E., St.-Cyr, J., Audet, C., and Bernatchez, L., 2010. Fast transcriptional responses to domestication in the brook charr *Salvelinus fontinalis*. *Genetics.* 185, 105–112.
- Sauvage, C., Vagner, M., Derome, N., Audet, C., and Bernatchez, L., 2012. Coding gene SNP mapping reveals QTL linked to growth and stress response in brook charr (*Salvelinus fontinalis*). *G3-Genes Genom. Genet.* 2, 707–720.
- Sheridan, M.A., and Hagemester, A.L., 2010. Somatostatin and somatostatin receptors in fish growth. *Gen. Comp. Endocrinol.* 167, 360–365.

- Skaara, T., and Regenstein, J.M., 1990. The structure and properties of myofibrillar proteins in beef, poultry, and fish. *J. Muscle Foods*. 1, 269–291.
- Sutton, S.G., Bult, T.P., and Haedrich, R.L., 2000. Relationships among fat weight, body weight, water weight, and condition factors in wild Atlantic salmon parr. *Trans. Am. Fish. Soc.* 129, 527–538.
- Tymchuk, W., Sakhrani, D., and Devlin, R., 2009. Domestication causes large-scale effects on gene expression in rainbow trout: Analysis of muscle, liver and brain transcriptomes. *Gen. Comp. Endocrinol.* 164, 175–183.
- Valente, L.M.P., Moutou, K.A., Conceição, L.E.C., Engrola, S., Fernandes, J.M.O., and Johnston, I.A. 2013. What determines growth potential and juvenile quality of farmed fish species? *Rev. Aquac.* 5, 168–193.
- Vandesompele, J., De Preter, K., Pattyn, F., Poppe, B., Van Roy, N., De Paepe, A., and Speleman, F., 2002. Accurate normalization of real-time RT-PCR data by geometric averaging of multiple internal control genes. *Genom. Biol.* 3, 1–13.
- Vélez, E.J., Lutfi, E., Azizi, S., Montserrat, M., Riera-Codina, M., Capilla, E., Navarro, I., 2016. Contribution of in vitro myocytes studies to understanding fish muscle physiology. *Comp. Biochem. Physiol. B: Biochem. Mol. Biol.* 199, 67–73.
- Vélez, E.J., Lutfi, E., Azizi, S., Perillo, M., Salmerón, C., Riera-Codina, M., Ibarz, A., 2017. Understanding fish muscle growth regulation to optimize aquaculture production. *Aquaculture*. 467, 28–40.
- Very, N.M., and Sheridan, M.A., 2007. Somatostatin inhibits insulin-like growth factor-I receptor expression in the gill of a teleost fish (*Oncorhynchus mykiss*). *FEBS Letters*. 581, 4773–4777.
- Volkoff, H., 2016. The neuroendocrine regulation of food intake in fish: A review of current knowledge. *Front. Neurosci.* 10, 1–31.
- Volkoff, H., Eykelbosh, A.J., Peter, R.E., 2003. Role of leptin in the control of feeding of goldfish *Carassius auratus*: interactions with cholecystokinin, neuropeptide Y and orexin A, and modulation by fasting. *Brain Res.* 972, 90–109.
- Volkoff, H., Hoskins, L.J., and Tuziak, S.M., 2010. Influence of intrinsic signals and environmental cues on the endocrine control of feeding in fish: Potential application in aquaculture. *Gen. Comp. Endocrinol.* 167, 352–359.

- Walock, C.N., Bergan, H.E., and Sheridan, M.A., 2012. Nutritional state modulates growth hormone-stimulated insulin-like growth factor and hormone-sensitive lipase mRNA expression. In: 10th International Congress on the Biology of Fishes, Madison, WI. 138 p.
- Wang, B., Jia, J., Yang, G., Qin, J., Zhang, C., Zhang, Q., Sun, C., 2016. In vitro effects of somatostatin on the growth hormone-insulin-like growth factor axis in orange-spotted grouper (*Epinephelus coioides*). Gen. Comp. Endocrinol. 237, 1–9.
- Wood, A.W., Duan, C., and Bern, H.A. 2005. Insulin-like growth factor signaling in fish. Int. Rev. Cytol. 243, 215–285.
- Zhang, G., Chu, W., Hu, S., Meng, T., Pan, L., Zhou, R., Liu, Z., 2011. Identification and analysis of muscle-related protein isoforms expressed in the white muscle of the Mandarin fish (*Siniperca chuatsi*). J. Mar. Biotechnol. 13, 151–162.

Table 1. Growth characteristics of *Salvelinus fontinalis* 1+ families used in the study. Groups were formed according to line (C= control; S= selected) and family performance (L= low; H= high).

Group	Family	n	Weight (g)	Length (cm)	Condition (K)
CL	C19	142	6.14 ± 1.82	8.82 ± 0.79	0.87 ± 0.13
	C16	119	7.19 ± 2.23	9.34 ± 0.99	0.86 ± 0.14
	C1	164	7.21 ± 3.63	8.92 ± 1.31	0.95 ± 0.23
	C18	135	7.43 ± 2.76	9.07 ± 1.10	0.96 ± 0.18
CH	C22	99	9.59 ± 2.45	10.02 ± 0.91	0.93 ± 0.10
	C5	199	10.50 ± 3.42	10.36 ± 1.17	0.91 ± 0.12
	C17	156	10.77 ± 3.66	10.54 ± 1.27	0.89 ± 0.11
	C10	179	11.20 ± 4.00	10.50 ± 1.29	0.93 ± 0.11
SL	S1	147	8.14 ± 2.49	9.62 ± 1.07	0.89 ± 0.08
	S19	164	10.25 ± 3.94	10.21 ± 1.35	0.92 ± 0.17
	S5	157	10.59 ± 3.63	10.55 ± 1.25	0.87 ± 0.10
	S3	178	10.98 ± 4.35	10.25 ± 1.49	0.98 ± 0.19
SH	S11	195	12.97 ± 4.42	10.93 ± 1.31	0.96 ± 0.11
	S12	95	13.27 ± 3.61	11.06 ± 1.07	0.96 ± 0.11
	S8	184	14.01 ± 4.81	11.11 ± 1.37	0.98 ± 0.10
	S13	176	15.09 ± 6.61	11.72 ± 1.69	0.95 ± 0.11

Table 2. Mean weight, length, and condition factor of *Salvelinus fontinalis* at 18 months. Line: C = control, S = selected; Family performance L = low, H = high; Phenotype: S = slow, F = fast; Group designation: line, family performance, phenotype; n = number of individuals.

Line	Family performance	Phenotype	Group	n	Weight (g)	Length (cm)	Condition
Control	Low	Slow-growing	CLS	32	5.03 ± 1.39	3.18 ± 0.71	0.90 ± 0.05
		Fast-growing	CLF	32	12.91 ± 3.03	11.24 ± 0.82	0.90 ± 0.11
	High	Slow-growing	CHS	32	6.95 ± 1.04	9.11 ± 0.48	0.92 ± 0.11
		Fast-growing	CHF	32	19.06 ± 3.85	12.90 ± 0.78	0.88 ± 0.09
Selected	Low	Slow-growing	SLS	32	6.33 ± 0.95	8.59 ± 0.54	1.00 ± 0.09
		Fast-growing	SLF	32	18.57 ± 3.42	12.49 ± 0.87	0.95 ± 0.10
	High	Slow-growing	SHS	32	6.62 ± 1.43	8.88 ± 0.62	0.94 ± 0.12
		Fast-growing	SHF	32	25.59 ± 11.18	13.99 ± 1.27	0.90 ± 0.09

Table 3. Information on sequences and primers obtained for *Salvelinus fontinalis*. For each studied gene, we present the species of origin of the sequences used to amplify the gene in brook charr, the designed PCR primers, the amplicon size (number of base pairs [bp]), and the percentage of similarity obtained between the original sequence and the *S. fontinalis* amplified sequence. Abbreviations are as follows: *ghrl*: ghrelin; *srifr*: somatostatin receptor; *lepr*: leptin receptor; *ghr-1*: growth hormone receptor 1; *igf-1*: insulin-like growth factor 1; *mhc*: myosin heavy chain.

Gene	Sequence used for primer design (accession no.)	Designed primers (5'-3')	<i>S. fontinalis</i> PCR amplicon size (bp)	<i>S. fontinalis</i> sequence similarity
<i>ghrl</i>	<i>Salvelinus alpinus</i> (XM_023995867)	F – ACTGATGCTGTGTACTCTGGC R – CTCTCAATGTCTCGCCGACC	223	97%
<i>srifr</i>	<i>Oncorhynchus mykiss</i> (NM_001124534)	F – GGGAAAAGACACCGGTTCGGA R – TGGTGTTCCTGTAGACCC	273	98%
<i>lepr</i>	<i>Salvelinus alpinus</i> (XM_024004689)	F – CAGTTACCTACATGTTCGGGGA R – GCCGATTCACCAGTAGCTGA	209	97%
<i>ghr-1</i>	<i>Oncorhynchus mykiss</i> (AY861675)	F – TTGCCTCATACGGGTTCGAACAT R – CAGGGTCTGGTTCCACGATG	431	99%
<i>igf-1</i>	<i>Oncorhynchus mykiss</i> (M95183.1)	F – TCAAGAGTGCGATGTGCTGT R – TTCGGTAGTTCCTTCCCCCT	301	100%
<i>mhc</i>	<i>Salvelinus alpinus</i> (XM_023984421)	F – GTTGAGGATCCGAGTGCAGGT R – CGGGAACAGCTCAGGGATAAC	506	99%

Journal Pre-proof

Table 4. qPCR IDT assays used for transcriptomics in *Salvelinus fontinalis* pituitary. Genes (*18s*: 18s ribosomal; *β -actine*: beta actin; *efl- α* : elongation factor 1 alpha; *gh*: growth hormone; *ghr-1*: *gh* receptor 1; *igf-1r*: *igf-1* receptor; *grl*: ghreline; *srifr*: somatostatin), primers (5'-3') (F [forward], R [reverse], P [probe]), bp (number of base pairs), and Tm (melting temperature; °C) are given.

Gene	Primer (5'-3')	bp	Tm
<i>18s</i>	F – CAAGACGAACGAAAGCGAAAG	21	62
	P – AACGAAAGTCGGAGGTTTCGAAGACG	25	68
	R – AGATACCGTCGTAGTTCCGA	20	62
<i>β-actine</i>	F – AGAGAGGTATCCTGACTCTGAAAG	23	62
	P – CACCAACTGGGACGACATGGAGAA	24	68
	R – CATCACACCTTCCTACAACCAC	22	62
<i>efl-α</i>	F – ATCGGCGGTATTGGAACAC	19	62
	P – CCTGAAGGCCGGTATGATCGTCAC	24	68
	R – GTGAAGTCTGTGGAGATCCCA	20	62
<i>gh</i>	F – GTCGCTAAGACAGGCCTCTG	20	62
	P – CGTCTACAGAGTCCAGTTGGCCTC	24	68
	R – AAGGTCGAGACCTACCTGAC	20	62
<i>ghr-1</i>	F – CCCACTGCACCTGTATCT	19	62
	P – CTTCAGAAGGAGGCTGTTTTGC	22	71
	R – ACCATGGTGGGAAGGAG	16	50
<i>igf-1r</i>	F – CAGCCCTCACTGTACTCTTC	22	61
	P – AAACACGAAACAGTGACAGGCTGGG	24	68
	R – CTCACGGTTGACAGAAGCATAG	22	61
<i>grl</i>	F – CCCAGAAACCACAGGGTAAA	20	61
	P – TTTGTCGGCGAGACATTGAAAGCT	24	68
	R – TTTGTCTTCCTGGTGAAGGG	20	61
<i>srifr</i>	F – CTTAGCTCACAGTAGGAGAAACC	23	62
	F – AATAGACAACATGGCCGCCAATGG	24	67
	R – GACTAGCAACTACCCAGCATAAC	22	62

Table 5. qPCR TaqMan assays used for *Salvelinus fontinalis* transcriptomics in the brain, liver, and muscle. Genes (*18s*: 18s ribosomal; β -*actin*: beta actin; *efl- α* : elongation factor 1 alpha; *npy*: neuropeptide Y; *lepr*: leptin receptor; *igf-1*: insulin growth like factor 1; *ghr-1*: gh receptor 1; *igf-1r*: *igf-1* receptor; *mhc*: myosin heavy chain; *myo*: myogenin), primers (5'-3') (F [forward], R [reverse], P [probe]), bp (number of base pairs), and T_m (melting temperature; °C) are given.

Gene	Primer (5'-3')	bp	T _m
<i>18s</i>	F – GATCCATTGGAGGGCAAGTCT	21	59
	P – TGCCAGCAGCCGC	13	69
	R – GATACGCTATTGGAGCTGGAATTTC	25	58
β - <i>actin</i>	F – GGTCGTCCCAGGCATCAG	18	59
	P – ATGGTTGGGATGGGC	15	69
	R – CGTCTCCCACGTAGCTGTCTT	21	58
<i>efl-α</i>	F – GCCCCTCCAGGATGTCTACA	20	59
	P – AATCGGCGGTATTGGA	16	69
	R – ACGGCCACGGGTACTG	17	59
<i>npy</i>	F – TGCTGAAGAGCTGGCCAAAT	20	60
	P – CTATACCGCGCTCAGAC	17	70
	R – TCTGTCTCGTGATCAGATTGATGTAG	26	58
<i>lepr</i>	F – CAGCATTCTGACATGCTTTAACA	24	58
	P – TATGGTCTACACAGTAGCTT	21	68
	R – CACCAATTCAAGGGCGGATA	20	59
<i>igf-1</i>	F – CGGTCACATAACCGTGGTATTG	22	59
	P – CGAGTGCAGCTTCC	14	70
	R – GCCGCACCTCGCAACT	16	59
<i>ghr-1</i>	F – CCCACAGCCCCCTGTATCT	19	62
	P – CTTCAAGAGGAGGCTGTTTTGC	22	71
	R – ACCAAGGTGGAAGGAG	16	50
<i>igf-1r</i>	F – TCCTCAGTGGGACCCTTCTG	20	59
	F – CCCCCTGGACTATAG	14	69
	R – CGACCATGAAGCCCAGTAGGT	21	59
<i>mhc</i>	F – CAAACCACATTGAACACCATCAG	23	59
	P – CACCACACTAGAAGTGT	17	69
	R – GGGTTAAGCTTTATTGATACAGGAAGTG	28	60
<i>myog</i>	F – CCTTGGGCCTGCAAGCT	17	58
	P – TGCAAACGCAAGACT	15	69
	R – CGCTTTTCGTCCGGTCCAT	18	58

Table 6. Effect of body length, condition, and line (selected or control) on the relative expression of genes related to the growth regulation pathway in 1+ *Salvelinus fontinalis* in different sampled tissues (liver, brain, pituitary, and muscle). Only final linear models (LM) and linear mixed models (LMM) including at least one significant effect are presented in this table (final models containing no significant effects are presented as supplementary material). Total n = 96 for all tissues except pituitary (total n = 39). Family was included in all models except pituitary as a random effect. For pituitary, family was the statistical unit. Estimates in bold are significant. *lepr* = leptin receptor; *ghr-1* = growth hormone receptor 1; *igf-1* = insulin-like growth factor 1; *igf-1r* = insulin-like growth factor 1 receptor; *myog* = myogenin.

	Estimate	SE	Variance	P-value
Liver				
<i>ghr-1</i> ($R^2 = 0.136$)				
Condition	1.964	0.865		0.025
Length	0.064	0.037		0.09
Line (selected)	0.548	0.156		0.01
Family (random effect)			0.069	0.20
<i>igf-1</i> ($R^2 = 0.236$)**				
Condition	1.939	1.069		0.07
Length	0.148	0.044		0.001
Line (selected)	0.681	0.183		<0.001
Family (random effect)			0.075	0.35
Brain				
<i>lepr</i> (Marginal $R^2 = 0.000$; Conditional $R^2 = 0.223$)**				
Condition	0.149	1.140		0.92
Length	0.068	0.043		0.13
Line (selected)	0.219	0.297		0.43
Family (random effect)			0.219	0.019
Pituitary				
<i>igf-1r</i> ($R^2 = 0.141$) **				
Condition	4.062	3.922		0.31
Length	0.207	0.093		0.034
Line (selected)	0.095	0.372		0.80
Muscle				
<i>ghr-1</i> ($R^2 = 0.061$)**				
Condition	0.437	1.148		0.70
Length	0.117	0.048		0.016
Line (selected)	0.019	0.213		0.93
Family (random effect)			0.087	0.38
<i>igf-1r</i> ($R^2 = 0.049$)**				
Condition	0.352	1.211		0.77
Length	0.028	0.049		0.56
Line (selected)	0.442	0.202		0.031

Family (random effect)		0.001	1.00
<hr/>			
<i>myog</i> (Marginal $R^2 = 0.000$, Conditional $R^2 = 0.160$)			
Condition	0.111	0.958	0.92
Length	0.040	0.039	0.31
Line (selected)	0.004	0.249	0.99
Family (random effect)		0.112	0.038

*A log transformation was applied to achieve normality

** A Box-Cox transformation was applied to achieve normality

Journal Pre-proof

Supplementary Table 1. Effect of body length, condition, and line (selected or control) on the relative expression of genes related to the growth regulation pathway in 1+ *Salvelinus fontinalis* in different sampled tissues (brain, pituitary, and muscle). Only linear models (LM) and linear mixed models (LMM) including no significant effects are presented in this table (final models containing significant effects are in Table 6). Total n = 96 for all tissues except pituitary (total n = 39). Family was included in all models as a random effect except for pituitary, for which family was the statistical unit. *npv* = neuropeptid Y; *srifr* = somatostatin receptor; *gh* = growth hormone; *ghr-1* = growth hormone receptor 1; *mhc* = myosin heavy chain.

	Estimate	SE	Variance	P-value
Brain				
<i>npv</i> **				
Condition	0.595	1.171		0.61
Length	0.070	0.049		0.16
Line (selected)	0.145	0.217		0.51
Family (random effect)			0.112	0.24
Pituitary				
<i>srifr</i> *				
Condition	5.221	6.406		0.42
Length	0.112	0.151		0.46
Line (selected)	0.170	0.607		0.78
<i>gh</i>				
Condition	3.379	7.812		0.25
Length	0.068	0.053		0.33
Line (selected)	0.035	0.270		0.90
<i>ghr-1</i> **				
Condition	1.410	4.308		0.74
Length	0.095	0.105		0.37
Line (selected)	0.311	0.367		0.40
<i>grl</i>				
Condition	4.062	3.922		0.31
Length	0.207	0.093		0.034
Line (selected)	0.095	0.372		0.80
Family (random effect)			<0.001	1.00
Muscle				
<i>Mhc</i> **				
Condition	1.561	1.139		0.17
Length	0.035	0.050		0.49
Line (selected)	0.041	0.217		0.85
Family (random effect)			<0.001	1.00

*A log transformation was applied to achieve normality

** A Box-Cox transformation was applied to achieve normality

Journal Pre-proof

Figure 1. Diagram showing the experimental design for different tissues used to evaluate the effect of line, family performance, and size (phenotype). Line: Control (C), Selected (S); Family performance: Low (L), High (H); Phenotype: Slow-growing (S), Fast-growing (F). A: brain, liver, and muscle. These tissues were not pooled, so each phenotype group represents four families (three slow-growing individuals per family, $n = 12$; three fast-growing individuals per family, $n = 12$). B: pituitary. For pituitary analysis, each family is represented by a pool of eight individuals, so only family differences were assessed.

Figure 2. Weight (g), length (cm), and condition factor of 1+ *Salvelinus fontinalis* families from control or selected lines. Significant differences ($p < 0.05$) within each panel are shown by different letters. Data are presented as mean \pm SD.

Figure 3. Line effects on the relative gene expressions in 1+ *Salvelinus fontinalis*. A: liver *ghr-1* from control and selected lines (data were not transformed). B: liver *ghr* correlated with condition from control and selection lines combined (data were not transformed). C: liver *igf-1* from control and selected lines (transformed data). D: liver *igf-1* correlated with length (cm) from control and selection lines combined (transformed data). E: muscle *igf-1r* from control and selected lines (transformed data). F: muscle *ghr-1* correlated with length (cm) from control and selection lines combined (transformed data). Blue lines represent means and shaded areas SD.

Figure 4. Relative gene expressions in 1+ *Salvelinus fontinalis* between individual phenotypes (slow- and fast-growing individuals) and family performance (low- and high-performing families). The results for gene expressions when nested ANOVAs indicated significant differences in individual performance (individual phenotype nested in family performance) are presented here, and asterisks indicate statistical differences between the slow- (LS and HS) and fast- (LF and HF) growing individuals within a family group (LS and LF: low performing families; HS and HF: high performing families). Dashed lines represent the relative expression of the CLS calibrator group (control line + low performance + slow growing).

Figure 5. Endocrine growth regulation pathway of 1+ *Salvelinus fontinalis* in the selected line. This schema represents gene expression, not protein activity. Genes presented in orange indicate mRNA upregulation. Solid arrows indicate stimulation and dashed arrows represent inhibitory actions. *npy* = neuropeptid Y; *lepr* = leptin receptor; *ghrl* = ghrelin; *srifr* =

somatostatin receptor; *gh* = growth hormone; *ghr-1* = growth hormone receptor 1; *igf-1* = insulin like growth factor 1; *igf-1r* = insulin like growth factor 1 receptor; *mhc* = myosin heavy chain; *myog* = myogenin.

Figure 6. Endocrine growth regulation pathway of 1+ *Salvelinus fontinalis* from (left) low-performing families / slow-growing phenotype and (right) high-performing families / fast-growing phenotype. This schema represents gene expression, not protein activity. Genes presented in orange indicate mRNA upregulation. Solid arrows indicate stimulation and dashed arrows represent inhibitory actions. *npy* = neuropeptid Y; *lepr* = leptin receptor; *ghr* = ghrelin; *srifr* = somatostatin receptor; *gh* = growth hormone; *ghr* = growth hormone receptor; *igf-1* = insulin-like growth factor 1; *igf-1r* = insulin-like growth factor 1 receptor; *mhc* = myosin heavy chain; *myog* = myogenin.

Supplementary Figure 1. Weight (g) of juvenile *Salvelinus fontinalis* by family at age 7 months (July), 11 months (December), and 18 months (June). C = control families; S = selected families. Data are presented as mean \pm SD.

Supplementary Figure 2. Specific growth rate (SGR) of *Salvelinus fontinalis* from 7–11 months and 11–18 months of age. Lines in red represents the selected families and lines in black the control families.

HIGHLIGHTS

Selection upregulate the *gh/igf-1* axis with no effect on appetite or muscle growth.

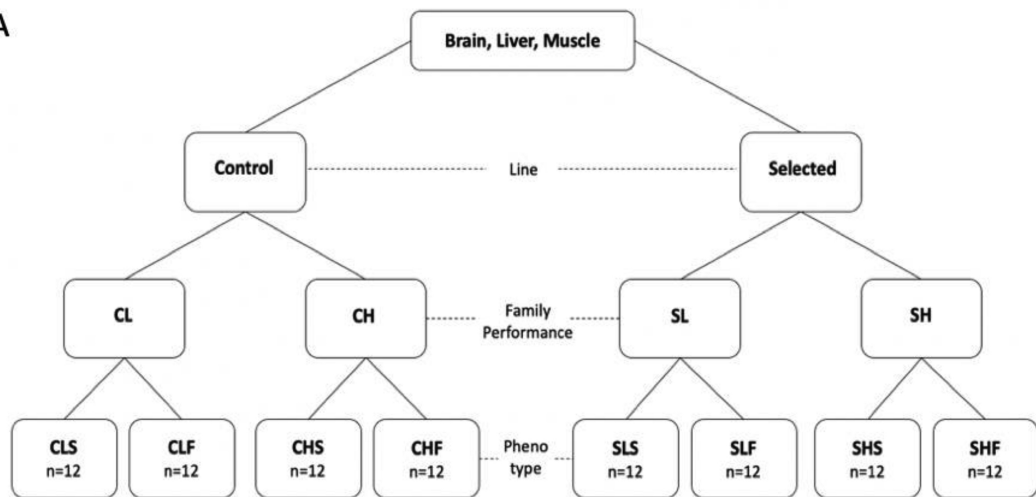
Phenotype differences in both lines are related to appetite regulation.

Upregulation of *lepr* is related to individual and familial slow performance.

Liver *igf-1*, muscle *ghr* and *igf-1r* are good indicators of growth among lines.

Journal Pre-proof

A



B

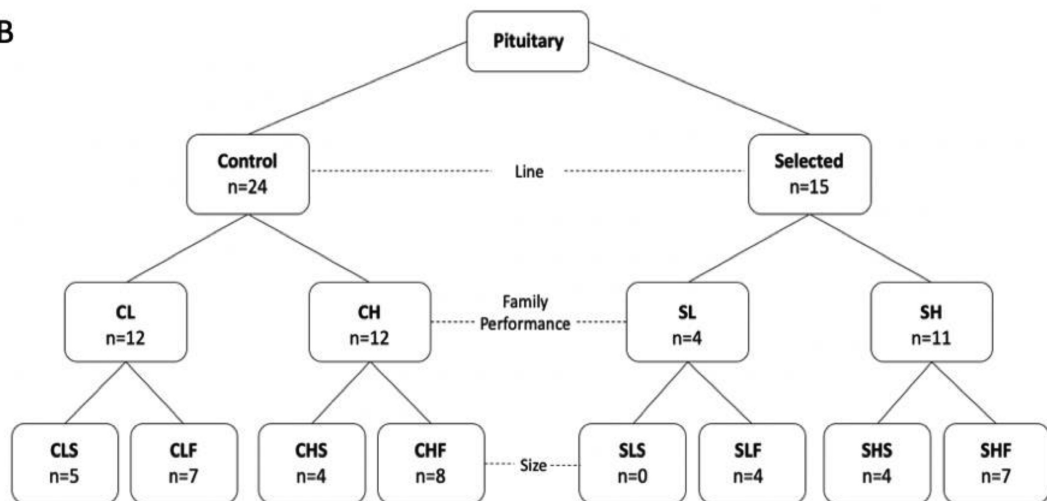


Figure 1

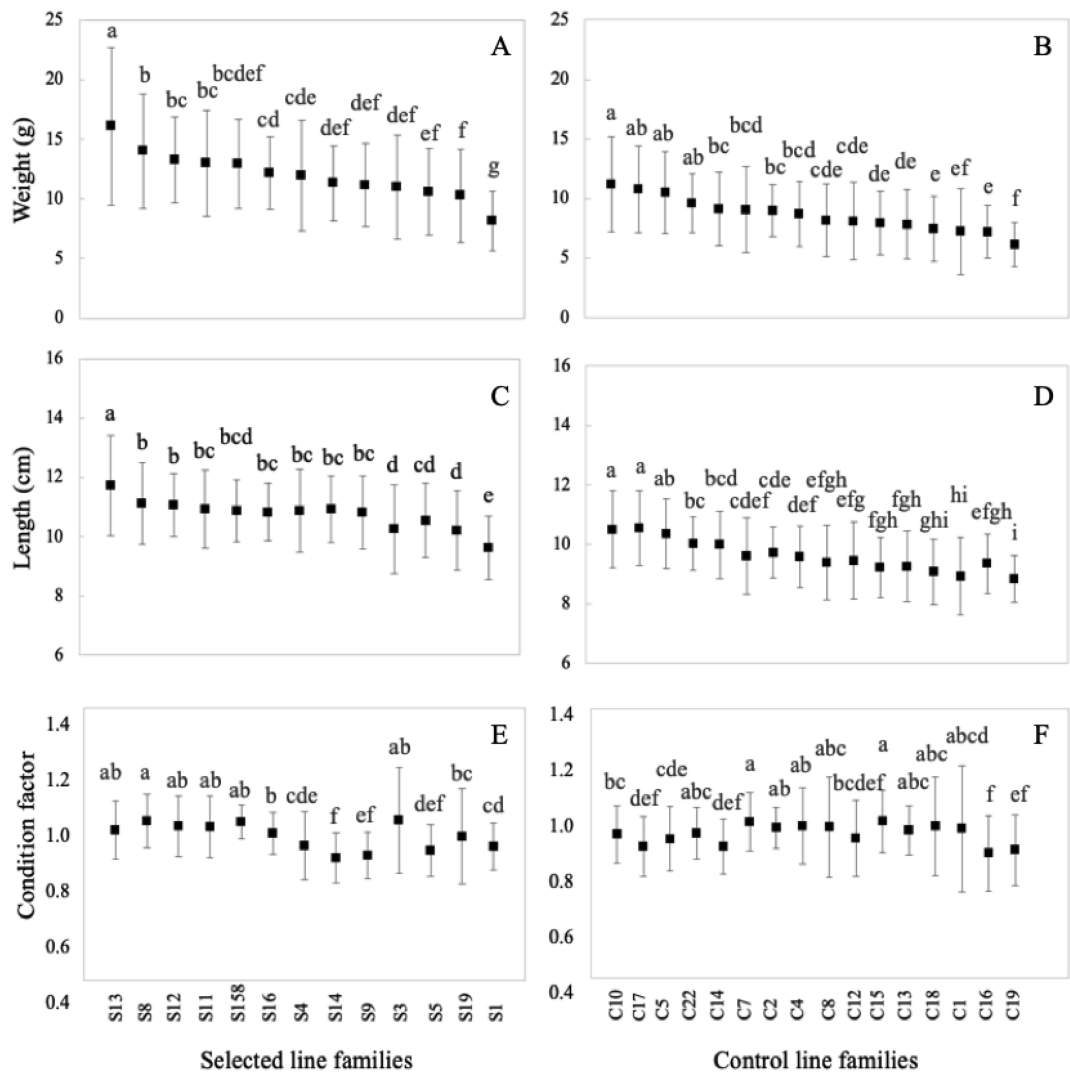


Figure 2

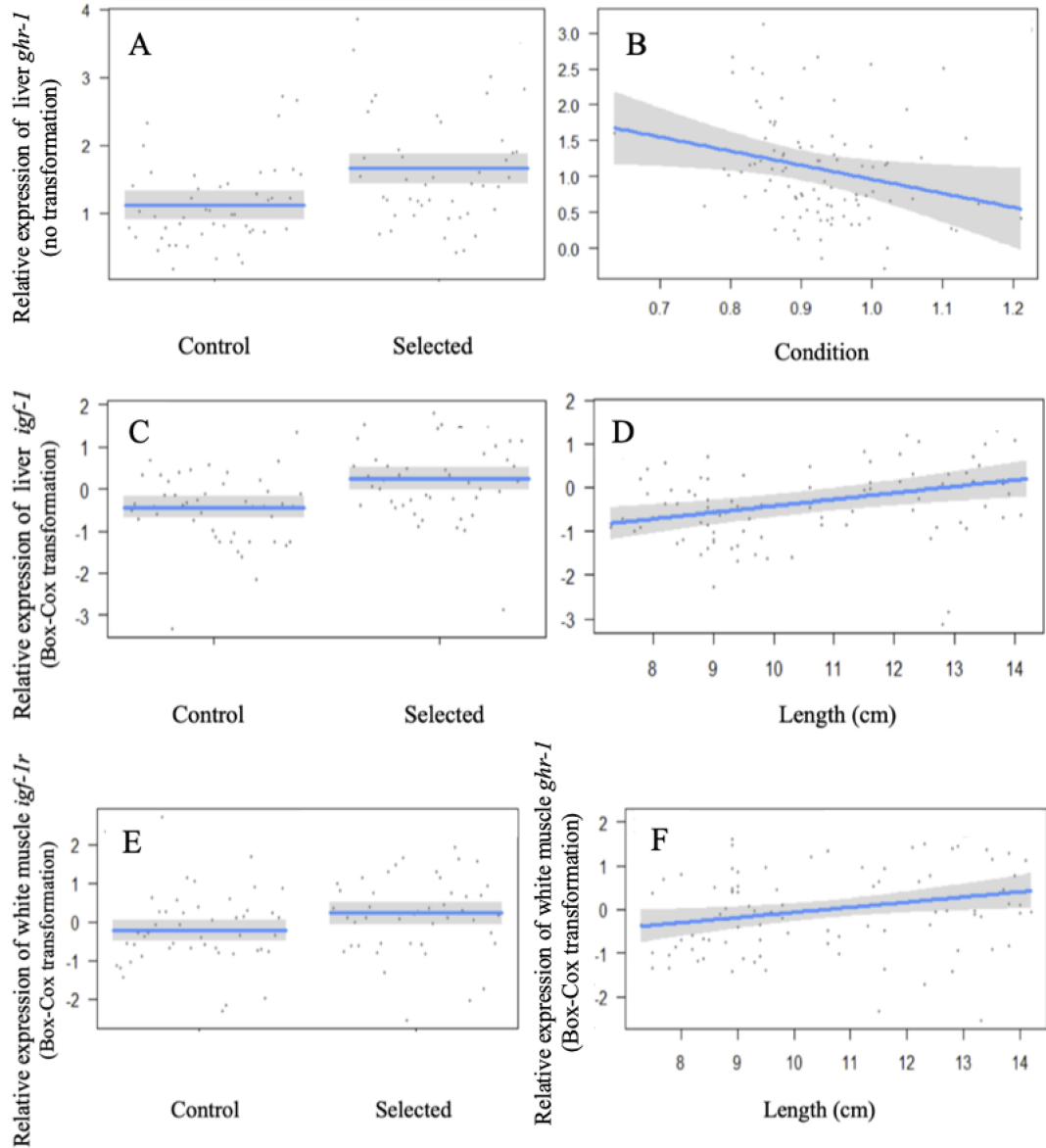


Figure 3

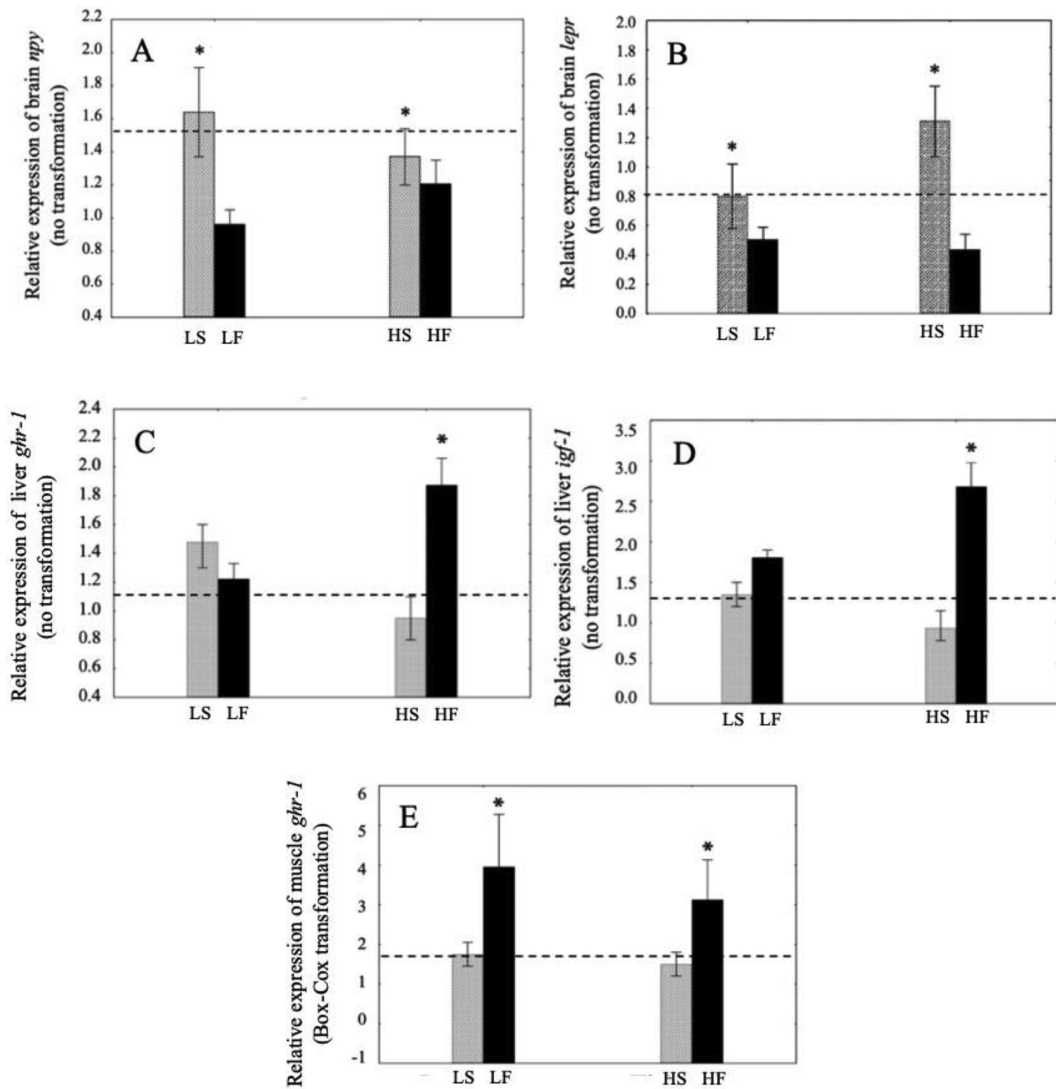


Figure 4

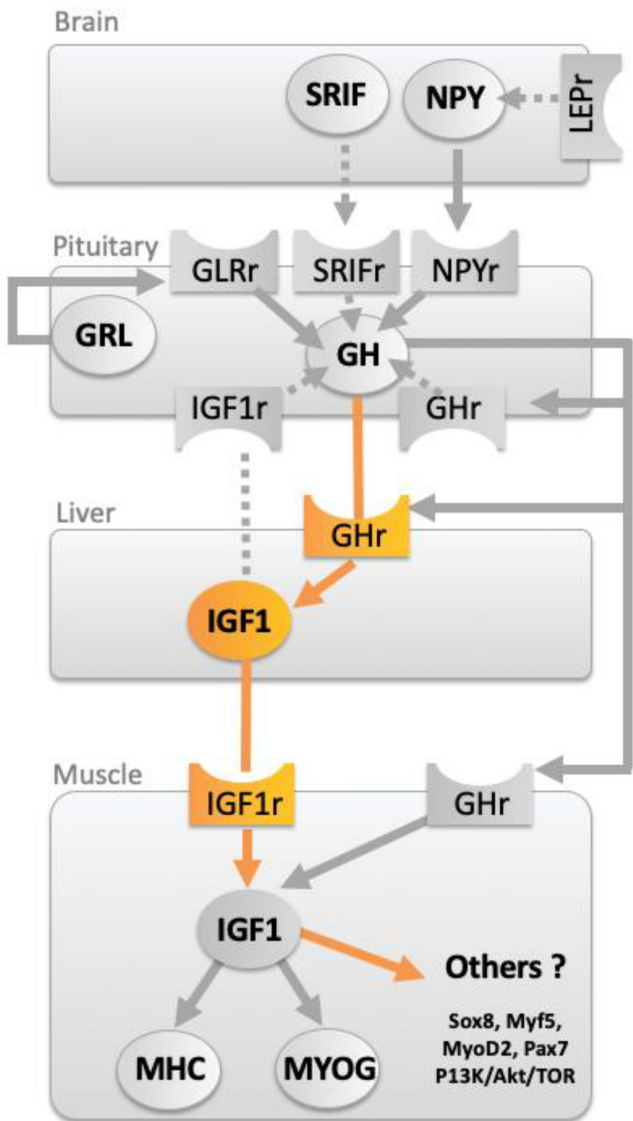


Figure 5

Low performance / Slow-growing

High performance / Fast-growing

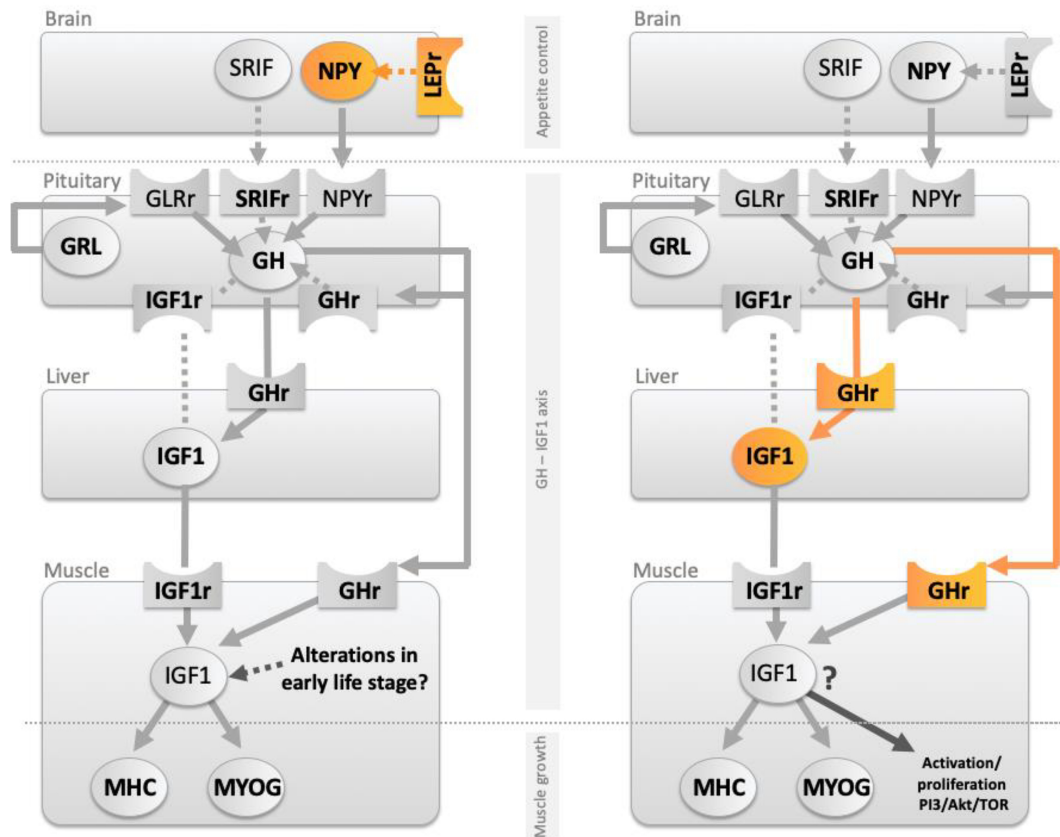


Figure 6